

1900

I'll Never Love Another Girl But You

Pat Rooney
Artist

George Nichols
Composer

Follow this and additional works at: <https://digitalcommons.library.umaine.edu/mmb-vp>

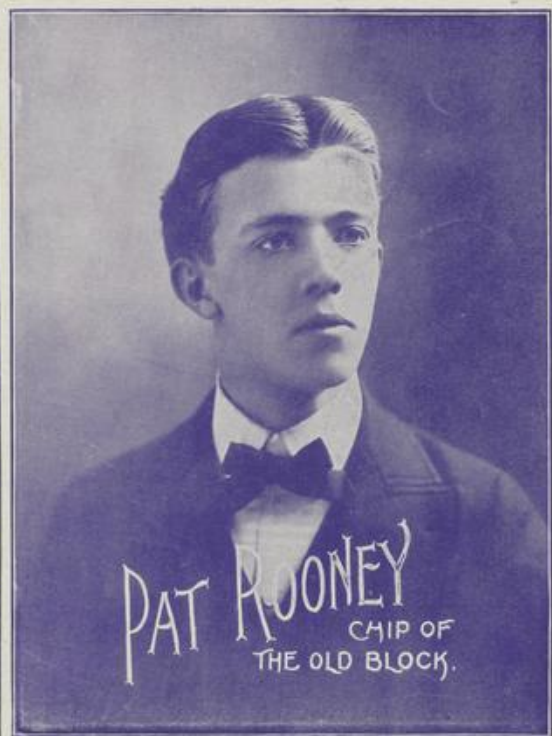
Recommended Citation

Rooney, Pat and Nichols, George, "I'll Never Love Another Girl But You" (1900). *Vocal Popular Sheet Music Collection*. Score 2591.
<https://digitalcommons.library.umaine.edu/mmb-vp/2591>

This Book is brought to you for free and open access by DigitalCommons@UMaine. It has been accepted for inclusion in Vocal Popular Sheet Music Collection by an authorized administrator of DigitalCommons@UMaine. For more information, please contact um.library.technical.services@maine.edu.

I'LL NEVER LOVE ANOTHER GIRL BUT YOU

THE
WALTZ
SONG-
HIT
OF
THE SEASON



WORDS
AND
MUSIC
BY

GEO. A. NICHOLS

PUBLISHED BY
SHAPIRO, BERNSTEIN & VON TILZER
NEW YORK 45 WEST 28th ST. CHICAGO 55 DEARBORN ST.

Vp. 008966
1900
I'll NEV

My Jersey Lily.

Words by ARTHUR TREVELYAN.

Music by HARRY VON TILZER.

CHORUS.

My Jer-sey Li - ly, with eyes so blue, No oth-er

li - ly, can e - qual you Will you be

mine, love? Please don't de - cline love! My Jer - sey li - ly, Say you

love me do. My Jer - sey do.

Bagaduce Music
 Lending Library
 Blue Hill, Maine
 No. 680

I'll Never Love Another Girl But You.

Words and Music by GEO. A. NICHOLS.

Tempo di Valse.

Musical score for piano introduction. It consists of two systems of grand staff notation (treble and bass clefs). The first system is marked *mf* and the second system is marked *p*. The music is in 3/4 time and features a waltz-like melody with chords.

Voice.

Musical score for the first two lines of the song. It includes a vocal line and piano accompaniment. The piano part is marked *p*. The lyrics are:

1. When the bright summer's day, in-to night fades a - way, And the birds to their
 2. Soon the day will be here, and that day will be dear, When we'll stand at the

Musical score for the final two lines of the song. It includes a vocal line and piano accompaniment. The lyrics are:

nest mates are call - ing, To a quiet sha - dy spot, near a
 al - tar to - geth - er, What a feel - ing di - vine, when I

rose covered cot, I stroll when the twilight is falling, For a
call her all mine, Tho' sunshine or storm be the weather, Hand in

sweet gentle miss, greets me there with a kiss, Far a way from the
hand all thro' life, I will roam with my wife, So contented and

world and its pain, And it's there side by side, I
happy each day, And when time dims her eyes, should

call her my pride, And whisper a gain and a gain. I'll
she ever sigh, With arm round her waist I will say.

CHORUS.

nev - er love an - other girl but you - oo - oo, —

p=f

— My heart beats when I gaze in - to your eyes so blue, — The

stars up in the skies say you'll be true - oo - oo, — I'll nev - er

marcato.

love an - oth - er girl but you - oo - oo. I'll oo. —

ff

