

The University of Maine
DigitalCommons@UMaine

Vocal Popular Sheet Music Collection

Public domain (may be downloaded in full)

1900

Absence Makes the Heart Grow Fonder: (Longing to be Near Your Side)

Herbert Dillea

Composer

Arthur Gillespie

Lyricist

Follow this and additional works at: <https://digitalcommons.library.umaine.edu/mmb-vp>

Recommended Citation

Dillea, Herbert and Gillespie, Arthur, "Absence Makes the Heart Grow Fonder: (Longing to be Near Your Side)" (1900). *Vocal Popular Sheet Music Collection*. Score 29.

<https://digitalcommons.library.umaine.edu/mmb-vp/29>

This Book is brought to you for free and open access by DigitalCommons@UMaine. It has been accepted for inclusion in Vocal Popular Sheet Music Collection by an authorized administrator of DigitalCommons@UMaine. For more information, please contact um.library.technical.services@maine.edu.

SUNG WITH GREAT SUCCESS BY ... PERFORMERS,
IN WARD & VOKE'S CO. "THE FLOOR WALKERS"

**ABSENCE
MAKES
THE HEART
GROW
FONDER**



WORDS BY
ARTHUR GILLESPIE
MUSIC BY
HERBERT DILLEA

5

NEW YORK WITMARK BUILDING. **M. WITMARK & SONS** CHICAGO SCHILLER BUILDING.
LONDON TORONTO HAVANA

Vp. 000028
1900
ABS

NEW MARCH HITS

BY POPULAR WRITERS

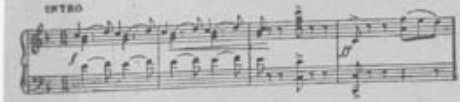
Look Over the following Thematics.

OUR HEROES' RETURN

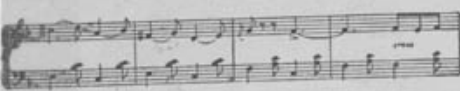
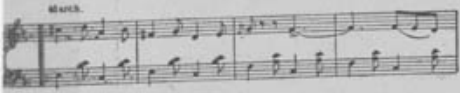
MARCH AND TWO-STEP

J. A. SILBARDEO.

INTRO



MARCH



Copyright 1939 by M. Witmark & Sons.
English Copyright Secured.

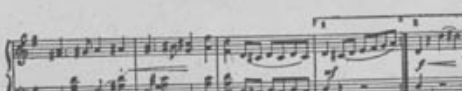
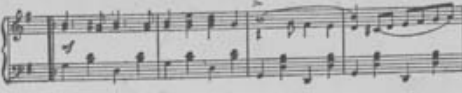
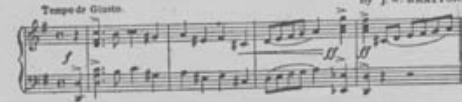
THE QUEEN OF HEARTS.

MARCH AND TWO-STEP.

Respectfully dedicated to Miss Trish Frigess.

By J. W. BRATTON

Tempo di Giusto.



Copyright 1939 by M. Witmark & Sons.
English Copyright Secured.

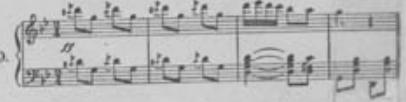
CHING LING FOO.

MARCH and RAGTIME CAKE WALK.

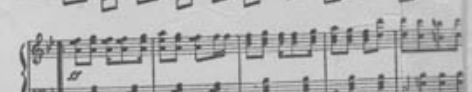
E. RATZENSTEIN

Introduction.

PIANO.



March.

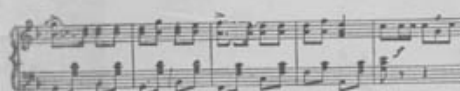
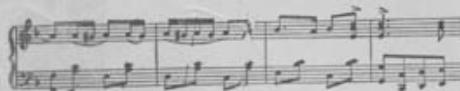
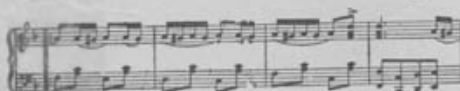


Copyright 1939 by the Dover Pub. Co. 5 East 17th St. New York City.
English Copyright Secured.

The Girl in the Barracks.

MARCH and TWO-STEP

HAT. D. MANN



Copyright 1939 by M. Witmark & Sons.
English Copyright Secured.

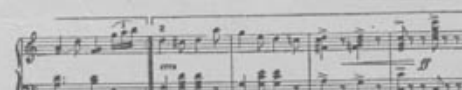
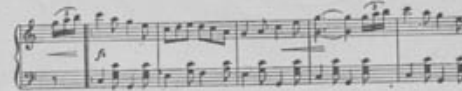
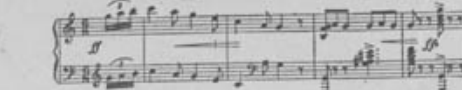
The Midnight Club.

MARCH AND TWO-STEP

With the Composer's best wishes for "Good Night"

Tempo di Marcia.

H. H. PARKER



Copyright 1939 by M. Witmark & Sons.
English Copyright Secured.

Brother Officers.

MARCH AND TWO-STEP

CLAY BERRY

Can. Rpt.rio.



Copyright 1939 by M. Witmark & Sons.
English Copyright Secured.

FOR SALE AT ALL MUSIC DEALERS.

I re - gret the harsh words spo - ken, That I know have caused you pain,
Prom - ise, then you will not sev - er From the ties that bind us two.

And my heart is near - ly bro - ken, Say you love me once a - gain.
Say you will be mine for - ev - er, Tell me that you still are true.

ritard.

CHORUS.

Ab - sence makes the heart grow fond - - er, That is why I long for you;

mf

Absence Makes the Heart Grow Fonder. 3 p.—2nd page. M. W. & Sons. 3290

The Waltz Ballad Hit of the Year.

"THE ONE I LOVE."

By **FAY & OLIVER.**

Sung by Julius P. Witmark and a host of other vocalists.

Respectfully Dedicated to MISS CELESTE K. WALSH, Chicago, Ill.

ABSENCE MAKES THE HEART GROW FONDER.

(LONGING TO BE NEAR YOUR SIDE.)

Words by ARTHUR GILLESPIE.

Music by HERBERT DILLBA.

Andante con moto.

The piano introduction is written in 3/4 time with a key signature of one flat (Bb). It begins with a mezzo-forte (*mf*) dynamic. The melody in the right hand features a series of eighth and quarter notes, while the left hand provides a steady accompaniment of quarter notes. A *ritard.* (ritardando) marking is placed over the final two measures of the introduction.

1. Sweet-heart I have grown so lone - ly, Liv - ing thus a - way from you,
2. Has the love that once was dear - er Than all else to me grown cold?

The piano accompaniment for the first two lines of the song is written in 3/4 time with a key signature of one flat. It begins with a piano (*p*) dynamic. The right hand features a melody of eighth and quarter notes, while the left hand provides a steady accompaniment of quarter notes.

For I love you and you on - ly; Still I won - der if you're true.
Or has ab - sence drawn us near - er, To each oth - er as of old?

The piano accompaniment for the last two lines of the song is written in 3/4 time with a key signature of one flat. It begins with a piano (*p*) dynamic. The right hand features a melody of eighth and quarter notes, while the left hand provides a steady accompaniment of quarter notes.

2290

Copyright, MCM, by M. WITMARK & SONS. International Copyright Secured.

A BEAUTIFUL PICTURE SONG.

"COME HOME TO DAD."

BY REMINGTON & GILLESPIE.

Lone - ly thro' the nights I pon - der, Wond'ring dar - ling, if you're true.

Dis - tance on - ly lends en - chant - ment. Tho' the o - cean waves di - vide, . . .

Ab - sence makes the heart grow fond - er, Long - ing to be near your side.

ritard.

Absence Makes the Heart Grow Fonder. 2 p.—3rd page. M. W. & Sons. 2290

One of the sweetest love ballads ever written.

“IF I THOUGHT YOU LOVED ANOTHER.”

By Arthur Gillespie & Alfred Solmon.

SIX PROMINENTLY SUCCESSFUL WALTZES.

Try these over on your piano and be convinced.

Waltz dedicated to Mr. A. B. BUTTS ZENDA WALTZES.

Composed by **FRANK M. WITMARK**

Allegretto

rail a die

Tempo di Valze

Copyright 1922 by M. WITMARK & SONS.
English Copyright Secured.

MERCEDES

Spanish Waltz.

Copyright 1922 by M. WITMARK & SONS.
English Copyright Secured.

INTRO.
Vivo

MOD. J. TRINKAUF.

gravel. molto.

Tempo di Valze.

Copyright 1922 by M. WITMARK & SONS.
English Copyright Secured.

MEMORIES OF SPAIN. WALTZES.

J. A. SILBERSTEIN

INTRO.
Moderato.

Tempo di Valze.

Copyright 1922 by M. WITMARK & SONS.
English Copyright Secured.

Waltz dedicated to my Wife The Smart Set. Waltzes.

WIL KASBYSTEN

INTRODUCTION.
Allegretto.

Tempo di Valze

Copyright 1922 by M. WITMARK & SONS.
English Copyright Secured.

Health, Wealth and Happiness.

Waltzes.

FRANK M. WITMARK

Composer of "ZENDA WALTZES"

March.
ff

March.
mf

ff

ff

ff

ff

Copyright 1922 by M. WITMARK & SONS.
International Copyright Secured.

Dedicated with Permission to Mrs. Julia Martens

Barbara Fritchie.

Waltzes

LOUIS W. TEICHMANN

MARCH FOR MRS.

Tempo di Valze

Copyright 1922 by M. WITMARK & SONS.
English Copyright Secured.

FOR SALE AT ALL MUSIC DEALERS.

NEW YORK
WITMARK BUILDING

M. WITMARK & SONS

CHICAGO
SCHILLER BUILDING

LONDON TORONTO HAVANA