

The University of Maine
DigitalCommons@UMaine

Vocal Popular Sheet Music Collection

Public domain (may be downloaded in full)

1904

Sweethearts of Boyhood Days

Joseph E. Howard
Composer

W.M. Hough
Lyricist

Frank R. Adams
Lyricist

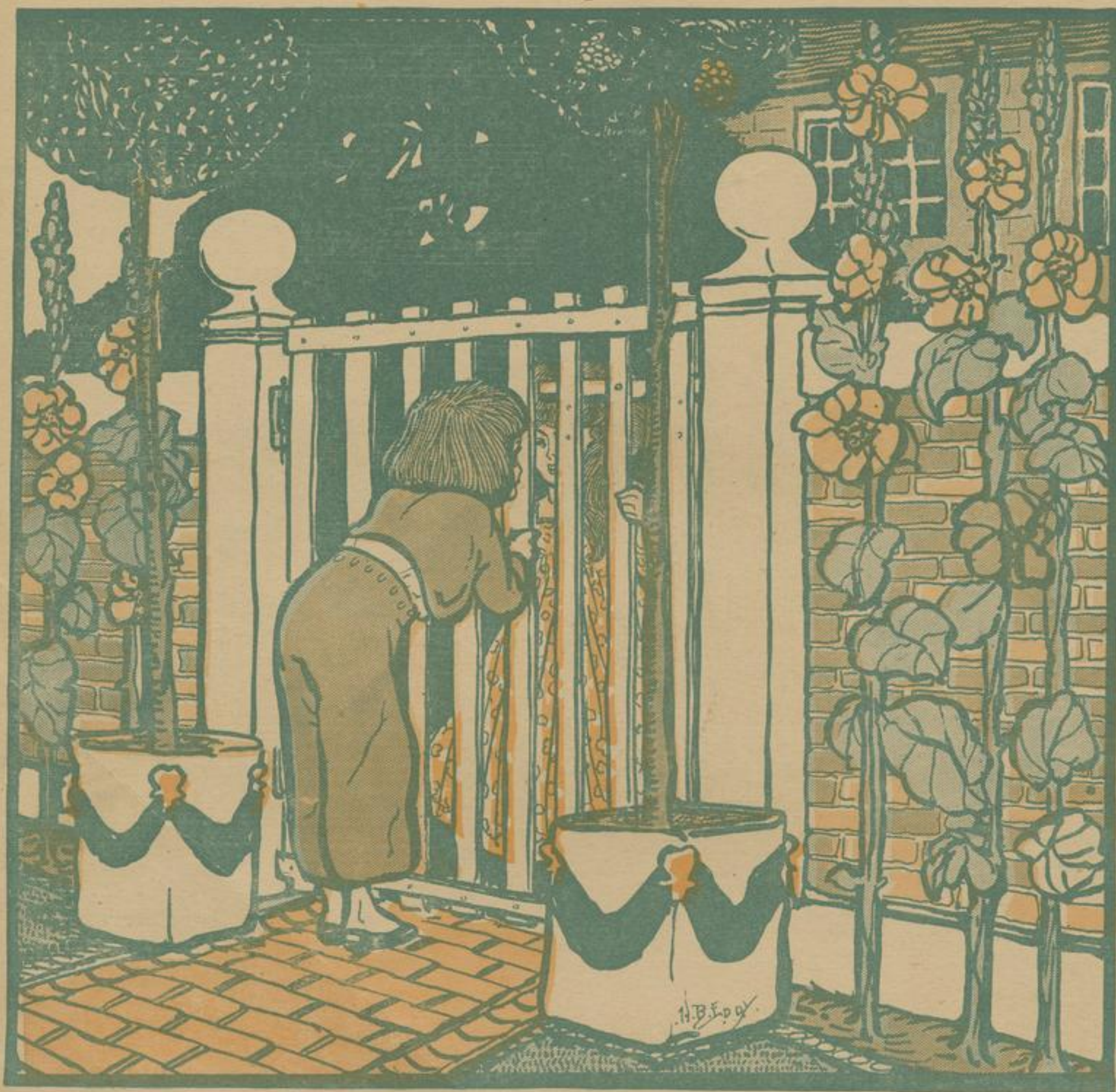
Follow this and additional works at: <https://digitalcommons.library.umaine.edu/mmb-vp>

Recommended Citation

Howard, Joseph E.; Hough, W.M.; and Adams, Frank R., "Sweethearts of Boyhood Days" (1904). *Vocal Popular Sheet Music Collection*. Score 5570.
<https://digitalcommons.library.umaine.edu/mmb-vp/5570>

This Book is brought to you for free and open access by DigitalCommons@UMaine. It has been accepted for inclusion in Vocal Popular Sheet Music Collection by an authorized administrator of DigitalCommons@UMaine. For more information, please contact um.library.technical.services@maine.edu.

SWEETHEARTS OF BOYHOOD DAYS



From the Musical Satire

"HIS HIGHNESS, THE BEY"

Lyric by
Will M. Hough and
Frank R. Adams

Music by
Joseph E. Howard

Published by
Permission of
Charles K. Harris,
New York,
Owner of
the Copyright

MUSIC SECTION HEARST'S BOSTON SUNDAY AMERICAN, SUNDAY, MAY 27, 1906—PAGES 5-8

Vp. 012483

1904

SWEET

Sweethearts of Boyhood Days.

Lyric by W. M. HOUGH
and FRANK R. ADAMS.

Music by
JOSEPH E. HOWARD.

Valse.

The piano introduction is in 3/4 time, key of B-flat major. It features a gentle melody in the right hand and a simple accompaniment in the left hand. The piece concludes with a *rit.* (ritardando) marking.

(HE) When shad - ows are fall - ing and day yields its bright - ness to
(SHE) The girl you re - mem - ber was nev - er ex - clu - sive in

The first line of the song features a vocal melody in the right hand and piano accompaniment in the left hand. The piano part begins with a *p* (piano) dynamic marking.

twi - light haze, ——— Then fan - cy re - turns to the
boy - hood's days, ——— No chap - er - one lis - tened with

The second line of the song continues the vocal melody and piano accompaniment. The piano part includes some chords with a fermata over them.

lips that were sweet - est in boy - hood days, ——— (SHE) When
glan - ces re - prov - ing to bring dis - may, ——— (HE) In

The third line of the song concludes the vocal melody and piano accompaniment. The piano part includes some chords with a fermata over them.

Copyright MCMIV by Chas. K. Harris.
British Copyright Secured.

Bagaduce Music
Lending Library

Blue Hill, Maine

Donor:

744

life was all day time, one long, sun - ny day time of child -
 barns and in at - tics, we gave our dra - mat - ics and played

hood ways. When you were a lad,
 "I spy" You were eas - y to find (She) Still

(HE) ter - ri - bly bad, (BOTH) Back in the boy - hood days. —
 I did not mind (BOTH) I know the rea - son why. —

CHORUS.

rit.
 Sweet-heart of boy - hood days Far in the gold -

p *mf*

