

The University of Maine DigitalCommons@UMaine

Vocal Popular Sheet Music Collection

Public domain (may be downloaded in full)

1922

Ivy : Cling To Me

James P Johnson
Composer

Isham Jones
Composer

Rogers
Lyricist

Perret
Illustrator

Follow this and additional works at: <https://digitalcommons.library.umaine.edu/mmb-vp>

Recommended Citation

Johnson, James P; Jones, Isham; Rogers; and Perret, "Ivy : Cling To Me" (1922). *Vocal Popular Sheet Music Collection*. Score 2923.
<https://digitalcommons.library.umaine.edu/mmb-vp/2923>

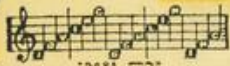
This Book is brought to you for free and open access by DigitalCommons@UMaine. It has been accepted for inclusion in Vocal Popular Sheet Music Collection by an authorized administrator of DigitalCommons@UMaine. For more information, please contact um.library.technical.services@maine.edu.

IVY

(CLING TO ME)



MADE IN U.S.A.



WORDS BY
ALEX ROGERS

MUSIC BY
ISHAM JONES
AND
JIMMY JOHNSON

Vp 009631
1922
Ivy

Irving Berlin, Inc.
MUSIC PUBLISHERS
1607 Broadway New York *perret*

A THOUGHT OF HOME SET TO A BEAUTIFUL MELODY
 I Want To See- I Want To Be In Old
New Hampshire

Words by
 ALEX. GERBER

Music by
 JEAN SCHWARTZ

CHORUS

I want to see I want to be in old New Hamp - shire

I want to go I want to know I'm in New Hamp - shire

p-f (b)

Detailed description: This block contains the musical score for the first song. It features a vocal line with lyrics and a piano accompaniment. The piano part includes dynamic markings like *p-f* and *(b)*. The score is written in a key with two flats and a common time signature.

THE GREATEST COMEDY SONG IN YEARS
You Tell Her- I S-T-U-T-T-E-R

Words by
 BILLY ROSE

Music by
 CLIFF FRIEND

CHORUS

You, you, you, you, you, you tell her 'Cause I, I, I, I, I, I stut-ter and
 You, you, you, you, you, you tell her 'Cause I, I, I, I, I, I stut-ter and

p-f sempre staccato

O, o, o, o, al - ways get in dutch,
 Some, some, some, some day I'll get in dutch,

Detailed description: This block contains the musical score for the second song. It features a vocal line with lyrics and a piano accompaniment. The piano part includes the dynamic marking *p-f sempre staccato*. The score is written in a key with one flat and a common time signature.

Copyright MCMXXII by IRVING BERLIN Inc. 1607 Broadway, New York
 International Copyright Secured All Rights Reserved

COPIES FOR SALE WHEREVER MUSIC IS SOLD
 These Numbers can also be had for your Phonograph and Player Piano

Bagaduce Music
 Lending Library
 Blue Hill, Maine
 Donor: 737

IVY

Words by
 ALEX ROGERS

(Cling To Me)

Music by
 ISHAM JONES
 and
 JIMMY JOHNSON

Moderato

The piano introduction is in 2/4 time, marked Moderato. It begins with a treble clef and a key signature of one sharp (F#). The music starts with a forte (f) dynamic and features a rhythmic pattern of eighth and sixteenth notes in the right hand, with a bass line of quarter notes in the left hand. The piece concludes with a sforzando (sfz) dynamic.

The first system of the song features a vocal line and piano accompaniment. The vocal line begins with a repeat sign and the lyrics "Iv - y, Iv - y, Iv - y, Iv - y,". The piano accompaniment is in 2/4 time, marked piano (p), and consists of a rhythmic eighth-note pattern in the right hand and a bass line of quarter notes in the left hand.

The second system continues the vocal line and piano accompaniment. The vocal line has the lyrics "way down in South Car'lin-a, Your a heart en-twin-er Iv - y, steam engines jus' a hum-min', Iv-y, I'm a-com-in' Iv - y,". The piano accompaniment remains in 2/4 time with a piano (p) dynamic.

The third system concludes the vocal line and piano accompaniment. The vocal line has the lyrics "Iv - y, Will you be wait-ing for me like you said you'd be Iv - y, Jus' like I told you I'd do com-in' home to you". The piano accompaniment continues in 2/4 time with a piano (p) dynamic.

Iv - y, Iv - y, If you would write me may - be,
Iv - y, Iv - y, My heart with love's so load - ed,

I could stand it ba - by, But you won't, -
Hard for me to tote it, Hope an' trust, - Should

If you don't, - my heart bust, -
Im com - in'back to Car - o -
You'll know it bust - ed bring in,

- lin - a and bring my love with me.
all of my love back home to you.

CHORUS

And iv - y may be when you see just how sweet

I can be. And when you see the load of love I am bring - ing,

A-round my heart a-gain I know you'll be cling - ing, Iv - y,

come on cling I'll bring a wed-ding ring Oh, iv-y won't you come and

wrap yourself all a-round my heart And iv-y heart.

1. 2.



THE SONG THAT TOUCHES THE HEART

You Know You Belong To Somebody Else

(So Why Don't You Leave Me Alone)

Words by
EUGENE WEST

Music by
JAMES V. MONACO

CHORUS

You know you be - long to some - bo - dy else, So

p-mf

why dont you leave me a - lone. You know some - one

else has a claim to your heart, And you should con - sid - er be -

Copyright MCMXXII by IRVING BERLIN, Inc. 1607 B'way N.Y.
International Copyright Secured All Rights Reserved

COPIES ON SALE WHEREVER MUSIC IS SOLD
This Number can also be had for your Phonograph and Player Piano