

1921

In A Little Town Near By

Florence Turner-Maley
Composer

Amy Ashmore Clark
Lyricist

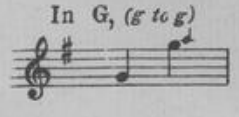
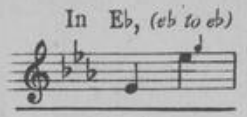
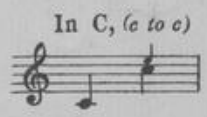
Follow this and additional works at: <https://digitalcommons.library.umaine.edu/mmb-vp>

Recommended Citation

Turner-Maley, Florence and Clark, Amy Ashmore, "In A Little Town Near By" (1921). *Vocal Popular Sheet Music Collection*. Score 3622.
<https://digitalcommons.library.umaine.edu/mmb-vp/3622>

This Book is brought to you for free and open access by DigitalCommons@UMaine. It has been accepted for inclusion in Vocal Popular Sheet Music Collection by an authorized administrator of DigitalCommons@UMaine. For more information, please contact um.library.technical.services@maine.edu.

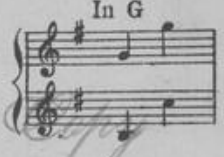
Katherine M. ...



Soprano or
Tenor (g to a)
and
Contralto or
Baritone (lead) (eb to eb)



Duet



Soprano or
Tenor (lead) (g to g)
and
Contralto or
Baritone (b to c)

Artists Copy

IN A LITTLE TOWN NEAR BY



LYRIC BY

AMY ASHMORE CLARK

AUTHOR OF
MY ROSARY FOR YOU...etc

MUSIC BY

FLORENCE TURNER-MALEY

SOLO 60 Cents DUET 75 Cents
QUARTET, MALE, FEMALE and MIXED VOICES 15 Cents each net



STANDARD

M. WITMARK & SONS NEW YORK

PRINTED IN U. S. A.

Vp-012083
1921
IN A

Two More Successes by Arthur A. Penn

SUNRISE AND YOU

Solo, Three keys, F (c to e), A^b (eb to g), B^b (f to a), 40¢ postpaid
 Duet, Two keys, E^b and A^b, 50¢ postpaid. Quartet, Male Female and Mixed Voices 25¢ each Net

Very slowly and with much expression

Sun-rise and you, And the soft morn-ing dew, Like the tears on your cheek when we part - ed. My
 fond heart a-wakes When the glo - rious day breaks, For the sun - rise re-minds me of you.

mp, *cresc.*, *ten.*, *rit.*, *pp*, *8 l.h.*

LITTLE BROWN HAND

Solo, Three keys, B^b (c to d), C (d to e), E^b (f to g) 40¢ postpaid
 Quartet, Male Female and Mixed Voices 15¢ each Net

'Tis the twi-light of the sun-lit years, But her eyes as bright-ly shine, And I bend me down and
 kiss the brown Of that lit-tle soft hand in mine.

poco rit., *a tempo*, *rit.*, *cresc.*, *rit.*, *f a tempo*, *rall.*

THE ABOVE CAN BE HAD WHEREVER MUSIC IS SOLD OR OF THE PUBLISHERS
 M. WITMARK & SONS 7 WITMARK BUILDING NEW YORK

Prices, Solos 40¢ — Duets 50¢ — Quartets 15 & 25¢ each, postpaid

If you are Interested in Beautiful Songs Sacred or Secular send for SONGLAND, — Fifty complete Poems and Thematic quotations from some of the most beautiful numbers in the well-known

WITMARK BLACK AND WHITE SERIES

ENCLOSE FIVE CENTS IN STAMPS FOR MAILING



In A Little Town Near By

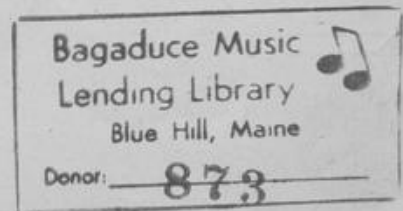


In mem'ry I see an old homestead rare
That was heaven on earth to me,
It was plain and so humble, yet naught can compare
With that spot where I long to be.

In a little house on a little street,
In a little town near by,
Where the roses climb o'er the garden wall
And you hear the robin's cry;
Where peace and rest make life seem blest,
When I'm weary how I sigh
For that little house on a little street,
In a little town near by.

In fancy I see the old fireplace
And you, mother mine, sitting there,
As the glow from the embers enlightend your face,
When you sat in your rocking chair.

Amy Ashmore Clark.



Dedicated to George Reardon

IN A LITTLE TOWN NEAR BY

Lyric by
AMY ASHMORE CLARKMusic by
FLORENCE TURNER-MALEY

mf poco cresc. rit.

The piano introduction consists of three measures. The first measure is a whole rest for the vocal line. The piano accompaniment begins with a melody in the right hand and a bass line in the left hand. The dynamics are marked *mf*, *poco cresc.*, and *rit.*

p With tenderness

In — mem' - ry I see an —
In — fan - cy I see the —

The first line of the song features a vocal melody and piano accompaniment. The vocal line starts with a whole rest, followed by the lyrics. The piano accompaniment provides harmonic support. The dynamic is marked *p*.

old home-stead rare That was heav-en on earth to me, It was
old fire - place And — you, mother mine, sit-ting there, As the

The second line of the song continues the vocal melody and piano accompaniment. The piano accompaniment features a steady bass line and chords in the right hand.

cresc.

plain and so hum - ble, yet naught can com - pare With that
 glow from the em - bers en - light - en'd your face When you

cresc.

spot where I long to be.
 sat in your rock - - ing chair.

In a lit - tle house on a lit - tle street, In a lit - tle town near

p

cresc.

by, Where the ros - es climb o'er the gar - den wall And you

cresc.

mf espress.

hear the rob-in's cry: Where peace and rest make life seem blest, When I'm

p poco rall.

wear - y how I sigh For that lit - tle house on a

1 molto rall. e dim.

lit - tle street In a lit - tle town - near by. *D.C.*

2 molto rall.

lit - tle town near by.

TWO MELODIC GEMS

SELECTED FROM

THE WITMARK BLACK AND WHITE SERIES

Lyric by J. KEIRN BRENNAN

One More Day

Music by ERNEST R. BALL

SOLO, FOUR KEYS - F, (c to c), Ab (eb to eb) Bb (f to f), C (g to g) 40¢. each, postpaid
 DUET, TWO KEYS - Bb - Baritone or Alto (lead), C - Sop. or Ten. (lead) . . . 50¢. " "
 OCTAVO - MALE, FEMALE and MIXED VOICES 15¢. " "

Moderately

One more day of wondrous Spring, Skies a gleam and birds a wing. Flown the Spring, like birds, a way; Bring them back just one more day. One more day.

The Night Wind

Lyric by J. KEIRN BRENNAN

The Sunbeam And The Rose

Music by ERNEST R. BALL

SOLO, FOUR KEYS - Db (ab to ab), Eb (eb to eb), F (f to f), G (g to g) 40¢. each, postpaid
 DUET, TWO KEYS - Db - Baritone or Alto (lead) F - Sop. or Ten. (lead) . . . 50¢. " "
 OCTAVO - MALE, FEMALE and MIXED VOICES 15¢. " "

Gently with much expression

A rose - bud smiled on a sun-beam, And the sun - beam kissed the rose, And they both had the same sweet day dream That a soul full of sun-shine knows.

THE ABOVE CAN BE HAD WHEREVER MUSIC IS SOLD OR OF THE PUBLISHERS
 M. WITMARK & SONS 7 WITMARK BUILDING NEW YORK
 Prices, Solos 40¢. — Duets 50¢. — Quartets 15¢. each, postpaid

If you are Interested in Beautiful Songs Sacred or Secular send for SONGLAND, - Fifty complete Poems and Thematic quotations from some of the most beautiful numbers in the well-known

WITMARK BLACK AND WHITE SERIES

ENCLOSE FIVE CENTS IN STAMPS FOR MAILING



- A Little While
- When Irish Eyes Are Smiling
- I Do Believe
- Smilin' Through
- Mother Machree
- Countful of Heart, Am I?
- Can't You Hear Me Callin' Caroline
- Dear Little Boy of Mine
- The Days Are in His Hands
- Evening Brings Rest and You
- In the Garden of My Heart
- The Magic of Your Eyes
- It Kicks For Me
- Ma Little Sunflower Good Night
- My Rosary for You
- Thou Art My God
- There's a Long Long Trail
- I Come to Thee
- Kiss Me Again
- What Shall We Do About All These
- The Want of You
- Teach me to Pray
- My Wild Irish Rose
- Even at Rest
- Sunrise and You
- Values
- Where the River Shannon Flows



ALL THESE SONGS AND MORE ARE IN OUR CATALOG **SONGLAND**

50 PAGES EACH LIKE THIS SENT FREE

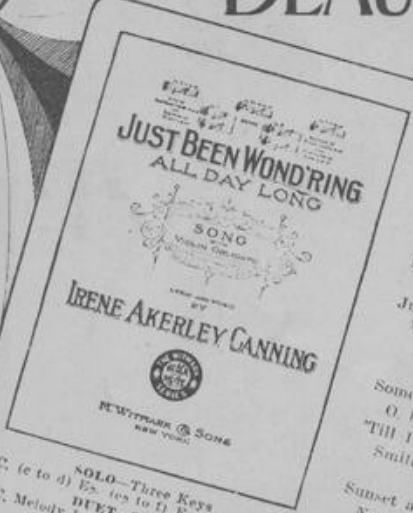
ON REQUEST

ENCLOSE 5 CENTS IN STAMPS FOR MAILING

COMPLETE COPIES - POSTPAID
 SOLOS 40 CENTS - DUETS 50 CENTS -
 QUARTETS (MALE, FEMALE OR MIXED VOICES) 15 & 25 CENTS EACH

Can be had wherever music is sold or of the Publishers
M. WITMARK & SONS, No 7 WITMARK BUILDING, NEW YORK, N. Y.

THIS TRADE MARK Represents the BEST there is in BEAUTIFUL BALLADS (SACRED - SECULAR) Solos - Duets - Quartets



JUST been wond'ring all day long,
 What I'd do if you were gone,
 S'pose I'd live on just the same,
 Wishing you were back again,
 Days would be endless, nothing right,
 Stars wouldn't even shine at night!
 Just been wond'ring all day long,
 What I'd do if you were gone.

Some folks say a heart can't break,
 O, but mine would ache and ache
 Till I'd see your face once more
 Smiling for me as of yore.
 Sunset and evening breathe your name,
 Naught without you could be the same,
 Oh, just been wond'ring all day long,
 What I'd do if you were gone.

Copyright 1921 by M. Witmark & Sons

THEY CAN BE PLAYED ON PIANO OR ORGAN

IDEAL FOR the HOME CONCERT and CHURCH

IF YOU LOVE A GOOD BALLAD (SACRED OR SECULAR) SEND FOR THIS BOOKLET

50 COMPLETE POEMS EACH A GEM



- Closer Still With Thee
- Starlight Love
- The Silent Voice
- Asleep in the Deep
- Springs a Lovable Lady
- Angel of Light
- My Dear
- Who Knows?
- Shine On Me
- Resignation
- One More Day
- Oh Lord Remember Me
- Bamboo Baby
- God Made You Mine
- Sorter Miss You
- Honey, if You Only Knew
- The Heart Call
- Lamplight Hour
- That's an Irish Lullaby