

## The University of Maine DigitalCommons@UMaine

---

Vocal Popular Sheet Music Collection

Public domain (may be downloaded in full)

---

1906

# Out To Norumbega

Al Stevens  
*Composer*

W. M Fisher  
*Illustrator*

Follow this and additional works at: <https://digitalcommons.library.umaine.edu/mmb-vp>

---

### Recommended Citation

Stevens, Al and Fisher, W. M, "Out To Norumbega" (1906). *Vocal Popular Sheet Music Collection*. Score 4198.  
<https://digitalcommons.library.umaine.edu/mmb-vp/4198>

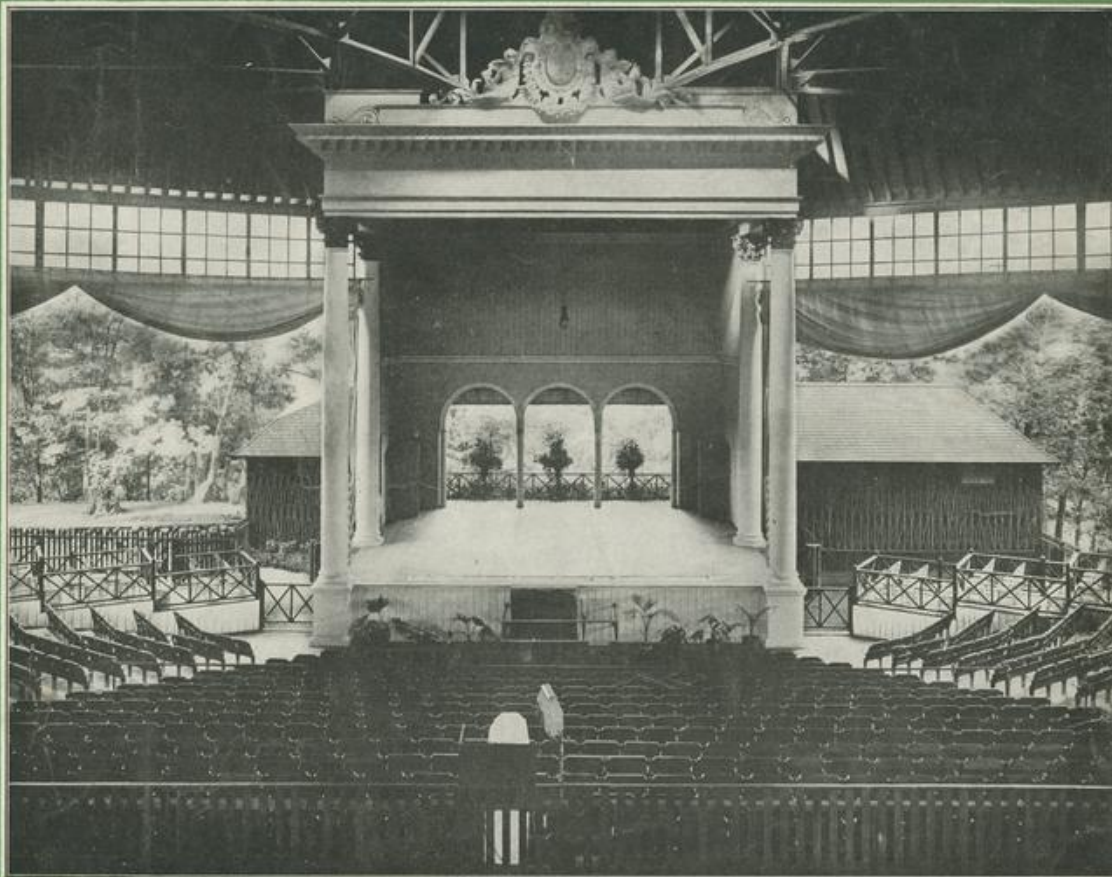
This Book is brought to you for free and open access by DigitalCommons@UMaine. It has been accepted for inclusion in Vocal Popular Sheet Music Collection by an authorized administrator of DigitalCommons@UMaine. For more information, please contact [um.library.technical.services@maine.edu](mailto:um.library.technical.services@maine.edu).

FOLLOW THE  
FLAG

WALTZ  
SONG

# N OUT TO NORUMBEGA

AUBURNDALE-ON-THE-CHARLES



THE GREAT STEEL THEATRE

BY AL. STEVENS

PUBLISHED BY  
NORUMBEGA PARK ©

*Fisher*

Vp. 013864  
1906

Out To



To Mr. Carl Alberte, manager of Norumbega Park.

## OUT TO NORUMBEGA.

Words and Music by AL. STEVENS.

Tempo di Valse.

VOICE.

PIANO.

1. There's a beaut - i - ful place to  
2. Take the old folks a - long with

go, ——— Where the Charles Riv - er breez - es blow, ——— It's  
you, ——— And there's fun for the child - ren too, ——— They

Copyright 1906 by the Norumbega Park Co.

Bagaduce Music  
Lending Library  
Blue Hill, Maine  
Donor: 1060

not ver - y far, take a Boul - e - vard car, Nor - um - be - ga's the place you  
dance at the sound of the "Mer - ry Go Round," Then you take them to see the

know; \_\_\_\_\_ You can spend a de - light - ful day, \_\_\_\_\_ And it  
Zoo; \_\_\_\_\_ The the - a - tre is up to date, \_\_\_\_\_ And they

drives all your cares a - way, \_\_\_\_\_ When you're feel - ing blue, then there's  
all say "The shows are great," \_\_\_\_\_ Then comes the Chal et, and you  
(Shal a

one thing to do Just "Fol - low the Flag" and be gay. \_\_\_\_\_  
end up the day, In the Rest - ur - ant right near the gate. \_\_\_\_\_

CHORUS.

Out to Nor - um - be - ga by the wind - ing riv - er's side, — It's

*p-f*

in the Gar - den Cit - y and it's ev' - ry body's pride; — Just the

place in sum - mer — on an ev' - ning af - ter dark, — Take a car or a

wheel or an au - to - mo - bile Out to Nor - um - be - ga Park. — Park. —

1. 2.