

The University of Maine

DigitalCommons@UMaine

Kendall Photo Albums

Kendall Albums 1920s

Jul 4th 1927

Inaugural Sage Park Prize

Trott Brothers, Boston, MA.

Follow this and additional works at: https://digitalcommons.library.umaine.edu/kendall_albums



Part of the [Agricultural and Resource Economics Commons](#), and the [United States History Commons](#)

Gift of Wilbur Hammond, Jean Bryer, and Roger and Mindy Smith, August 2003.

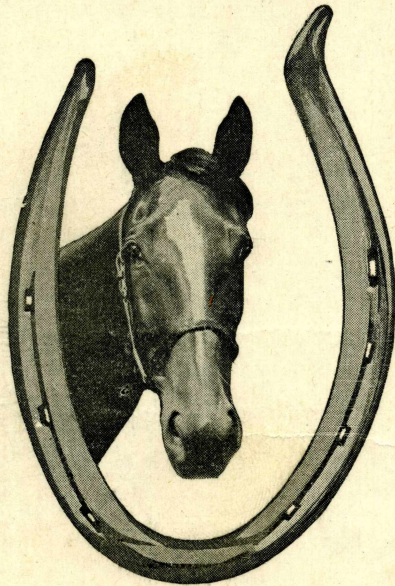
Restrictions and additional information contact Special Collections Department, University of Maine 5729 Fogler Library, Orono, ME 04469-5729 or call (207) 581-1686.

Recommended Citation

Trott Brothers, Boston, MA., "Inaugural Sage Park Prize" (1927). *Kendall Photo Albums*. 1. https://digitalcommons.library.umaine.edu/kendall_albums/1920s/1927/1

This Race Program is brought to you for free and open access by DigitalCommons@UMaine. It has been accepted for inclusion in Kendall Photo Albums by an authorized administrator of DigitalCommons@UMaine. For more information, please contact um.library.technical.services@maine.edu.

TROTT'S
Official
SCORE CARD



SAGE PARK
WINDSOR, CONN.
Monday, July 4, 1927

A. H. STANDISH, Starter

C. B. STICKNEY, Judge

F. H. THRALL, Pres.

J. P. GRAHAM, Sec'y

S. J. ORR, Vice-Pres.

A. J. WILSON, Treas.

HARRY McKENNEY, Asst. Starter

Published by Trott Bros., Boston, Mass.

PRICE 15 CENTS

WILLIAM J. DOYLE, PRINTER

FIRST EVENT

2:24 CLASS

PURSE \$1000

TROTTING—THREE IN FIVE

1	PETERPORT, b h, 2:13$\frac{1}{4}$, Sire, Peter Scott, 2:05—Treciletta, by Tregantle, 2:09 $\frac{1}{4}$ W. H. Quis, Winfield, N. Y. BROWN A. CORNWELL	5	5	4	
2	LULU S., b m, 2:07$\frac{3}{4}$, Sire, Mainleaf, 2:08 $\frac{1}{4}$ —Amy Knight, by Border Knight, 2:12 $\frac{1}{4}$ A. L. Martin, Rockville, Conn. GREEN-YELLOW A. L. MARTIN	6	1	1	1
3	ROZETA, blk m, 2:23$\frac{1}{4}$, Sire, Atlantic Express, 2:07 $\frac{3}{4}$ —Vozeta, 2:07, by Peter Volo, 2:02 George A. Graves, Boston, Mass. PURPLE-GOLD A. RODNEY	1	2	1	4
4	LEMA VOLO, b m, 2:11, Sire, Peter Volo, 2:02—Palema, by Bingen, 2:06 $\frac{1}{4}$ Spring Meadow Farm, Center Square, Pa. BLUE-WHITE E. McGRATH	3	3	2	2
5	TEMPLE HARVESTER, b g, 2:09 $\frac{3}{4}$, Sire, the Harvester, 2:01—Zorah Temple, 2:23 $\frac{3}{4}$ by the Deforest 2:22 $\frac{1}{4}$ H. M. Stanford, Springfield, Mass. BLUE A. MARTIN	2	1	5	1
6	BIRDSONIA, b m, 2:17$\frac{1}{4}$, Sire, Bin Jolla, 2:17 $\frac{3}{4}$ —Driftsonia, by Walnut Hall, 2:08 $\frac{1}{4}$ Gurnsey and Safford, Keene, N. H. BROWN J. HANNIFIN	4	4	3	3
7	GEORGE W. FOSTER, b g, Sire, Peter Potemkin, 2:15 $\frac{1}{4}$ —Maire Constant, 2:12 $\frac{1}{4}$, by Constenaro, 2:16 $\frac{1}{4}$ J. D. Knight, Reading, Mass. BLUE W. GIBBONS				
8	NEIL, VOLO, br g, 2:12$\frac{1}{4}$, Sire, Peter Volo, 2:02—Katy O'Neil, by Walnut Hall, 2:08 $\frac{3}{4}$ Fred Holsapple, Copake Falls, N. Y. RED-BLACK H. BRUSIE				
9					
10					

.13 $\frac{1}{4}$.11 $\frac{3}{4}$.12 $\frac{3}{4}$ 14 $\frac{1}{4}$.13 $\frac{3}{4}$

TOMORROW'S RACES

2:15 TROT \$1,000

SAGE PARK PACE \$10,000

TWO-YEAR-OLD TROT \$2,000

**INAUGURAL SAGE PARK PRIZE
SECOND EVENT**

2:07 CLASS

PURSE \$10,000

PACING—THREE HEATS

\$1,500 to winner of each heat; \$750 to second horse;
\$450 to third; \$300 to fourth; \$1,000 to winner of race.

1 3	GUESSWORK, b m, 2:04¹/₄, Sire, Peter the Great, 2:07 ¹ / ₄ —Elise Leyburn, 2:21 ³ / ₄ , by Expedition, 2:15 ³ / ₄ W. H. Mahony, Hyde Park, Mass. GREEN-GOLD W. FLEMMING	2133
2 2	RIBBON CANE, b m, 2:01³/₄, Sire, Peterhof, 2:10 ¹ / ₄ —Dixie Lou, 2:13 ¹ / ₄ , by Walter Direct, 2:05 ³ / ₄ L. W. Kenney, Lynnfield, Mass. GREEN-RED F. HYDE	Miss
3 4	SILVER WEATHER, ch h, 2:06 ¹ / ₄ , Sire, Silver Axworthy, 2:10—Miss Weathers, by E. P. W. James P. Berry, Hartford, Conn. BLACK W. CROZIER	1762
4 7	LADY PATCH, b m, 2:05¹/₄, Sire, Walter Cochato, 2:02 ¹ / ₄ —Maud, by India Dan Patch William Leber, Ephrata, Pa. BLUE-WHITE E. McGRATH	544
5	MAJOR FRISCO, b g, 2:07¹/₄, Sire, Frisco, 2:21 ¹ / ₄ —Nelly Wilkes, by Island Wilkes, Jr., 2:06 ¹ / ₄ H. M. Stanford, Springfield, Mass. BLUE A. MARTIN	
6 6	COLONEL BIDWELL, b g, 2:02 ¹ / ₄ , Sire, Colonel Forrest, 2:05 ³ / ₄ —Dorothy Bidwell, 2:26 ¹ / ₄ , by Cochato, 2:11 ¹ / ₂ William H. Leeser Stable, Monroe, N. Y.	755
7 5	HOLLYROOD VOLO, b g, 2:02¹/₂, Sire, Peter Volo, 2:02—Fanny Stan- ton, 2:10 ¹ / ₄ , by Bingen, 2:06 ¹ / ₄ Thomas L. Anderson, St. Paul, Minn. BLUE-GOLD A. THOMAS	6610r
8 1	BILLY D., b g, 2:06¹/₄, Sire, Leo Tell, 2:06 ¹ / ₄ —Gertie B., by Bee Gee, 2:08 ¹ / ₄ F. C. Niles, Kansas City, Mo. GREEN-WHITE W. BREITENFIELD	3211
9 8	JEAN GRATTAN, br m, 2:05¹/₄, Sire, Grattan Royal, 2:06 ¹ / ₄ —Darkey Hal, 2:02 ¹ / ₄ , by Star Hal Robert Trench, Teeswater, Ont. PURPLE-WHITE B. STURGEON	432
10	NEILL FRISCO, br g, 2:06¹/₂, Sire, San Francisco, 2:07 ³ / ₄ —Katy O'Neill, by Walnut Hall, 2:08 ¹ / ₄ W. P. McCraw, North Adams, Mass. BLACK C. MOSHER	
12	ADMIRAL GRATTAN, br h, 2:09 ¹ / ₂ , Sire, Grattan Royal, 2:06 ¹ / ₄ —Phillis Admiral, 2:12 ¹ / ₄ , by High Admiral, 2:07 ³ / ₄ Robert Trench, Teeswater, Ont. BROWN C. MABREY	
14	RED LINE, ch g, 2:09¹/₄, Sire, Colonel Johnson, 2:15—Breeding of dam not given Gallagher & Hammond, Woodstock, N. B. RED W. BRICKLEY	
15		06 ³ / ₄ .07 ³ / ₄ .09 ¹ / ₄ .12 ¹ / ₂

ALLAN J. WILSON CUP

THIRD EVENT

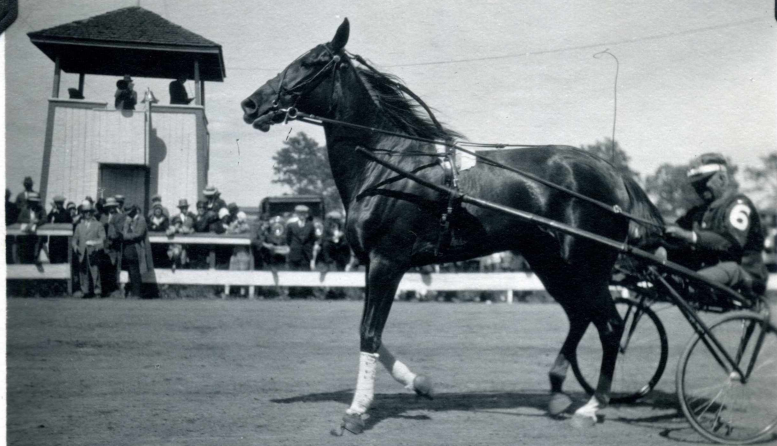
FOALS OF 1924

3yr old

PURSE \$2,000

PACING—TWO IN THREE

3	1	ROSE GRATTAN, b f, 2:11¼, Sire, Grattan Royal, 2:06¼—I-am-a Widow, by Widower Peter, 2:14¾ W. R. Payne, Toronto, Ont. BROWN-GOLD W. PAYNE	354	3rd m
5	2	ACE HIGH, b g, 2:12¼, Sire, Peter Volo, 2:02—Miss Dot, 2:16¼, by Bernadotte, 2:29½ M. J. Aronson, New York, N. Y. BLACK-CHECK E. PITMAN	2211	
2	3	VOLO RICO, br g, Sire, Peter Volo, 2:02—Ethel Rico, by Manrico B., 2:07¼ James P. Berry, Hartford, Conn. BLACK W. CROZIER	1111	
1	4	ZOM McKINNEY, br g, Sire, Zombrino, 2:05¼—Beaut McKin- ney, 2:12¼, by Wallace McKinney, 2:26¼ N. P. Wheeler, White River Junction, Vt. BROWN-WHITE R. NICKERSON	445	
4	5	BENTON DIRECT, blk g, 2:14¼, Sire, Braden Direct, 2:01¼—May Ben- ton, by Willie Benton, 2:05¼ H. M. Stanford, Springfield, Mass. BLUE A. MARTIN	563	4th m
6	6	ABBE COGGINS, b g, Sire, the Abbe, 2:04—the Great Madam, 2:14¼, by Peter the Great, 2:07¼ Noah Squires, Hartford, Conn. BLUE N. SQUIRIES		
6	7	SIR MORGAN, b c, Sire, Morgan Axworthy, 2:17—Chatty Todd, by Sir Frederick Ralph Paul Adams, Bridgeville, Dela. GREEN-GOLD C. BECKER	736	
7	8	GYPSY STAR, ch f, 2:13½. Sire, Napoleon Direct, 1:59¾—Prin- cess at Law, 2:14¼, by Constenaro, 2:16¼ Herbert A. Rugg, Lowell, Mass. RED-BLACK H. BRUSIE	6122	2nd m
			10¾ 19½ 12¾ 14¼	



- Gypsy Star -