

The University of Maine

DigitalCommons@UMaine

Kendall Photo Albums

Kendall Albums 1930s

Jul 2nd 1931

Bay State Circuit, Sage Park, July 2, 1931

F. G. Trott

Follow this and additional works at: https://digitalcommons.library.umaine.edu/kendall_albums



Part of the [Agricultural and Resource Economics Commons](#), and the [United States History Commons](#)

Gift of Wilbur Hammond, Jean Bryer, and Roger and Mindy Smith, August 2003.

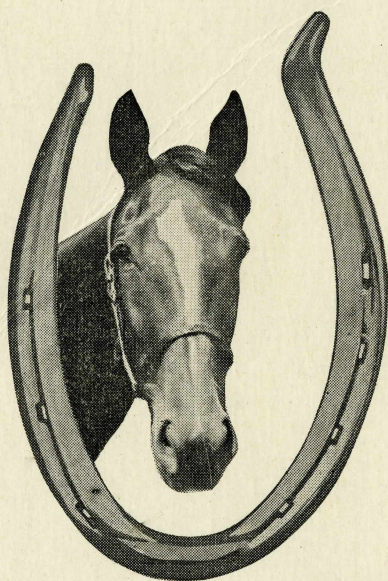
Restrictions and additional information contact Special Collections Department, University of Maine 5729 Fogler Library, Orono, ME 04469-5729 or call (207) 581-1686.

Recommended Citation

Trott, F. G., "Bay State Circuit, Sage Park, July 2, 1931" (1931). *Kendall Photo Albums*. 2.
https://digitalcommons.library.umaine.edu/kendall_albums/1930s/1931/2

This Score Card is brought to you for free and open access by DigitalCommons@UMaine. It has been accepted for inclusion in Kendall Photo Albums by an authorized administrator of DigitalCommons@UMaine. For more information, please contact um.library.technical.services@maine.edu.

TROTT'S
Official
SCORE CARD



**BAY STATE
CIRCUIT
Sage Park
WINDSOR, CONN.**

Thursday, July 2, 1931

PRICE 15 CENTS

Published by F. G. Trott, Boston, Mass.

WILLIAM J. DOYLE, PRINTER

FIRST EVENT

2:18 CLASS

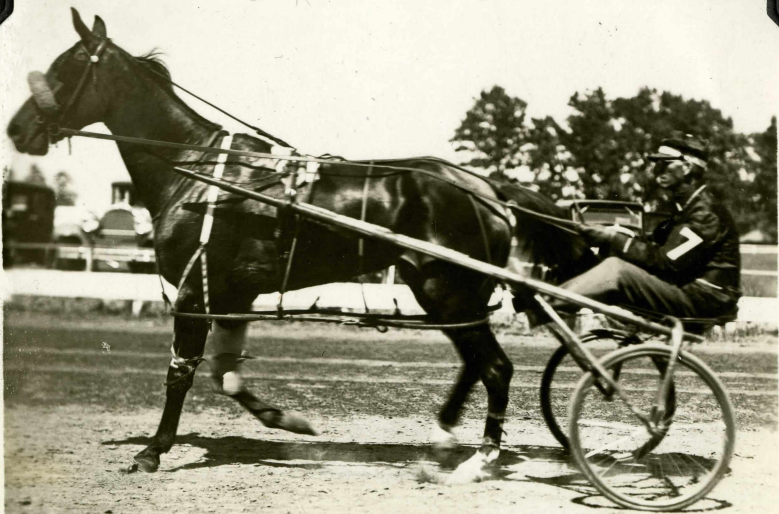
PURSE \$1,000

PACING—THREE HEATS
POSITIONS ()

1	1	GLORIA, br m (2) Peter Volo—Laurel Watts by General Watts James P. Berry, Hartford, Conn. BLACK W. CROZIER	4	8	7
	2	HARRY F, b g (5) Hedgewood Lad—Leona W by Wheeler S W. D. Ireland, Portland, Me. BLACK W. GIBBONS	5	6	8
	3	LADY LUCY, br f (8) Peter Volo—Lady Belwin by Belwin W. B. Eckert, Reading, Pa. GREEN-GOLD H. GOODHART	2	3	5
	4	LAWFUL TIP, b m (4) Lawful—Blanch Tipton Ralph & Paul Adams, Bridgeville, Del. GREEN-GOLD W. FLEMMING	8	4	3
	5	AZURE VOLO, b h (9) Peter Volo—Azurea by Guy Axworthy Charles H. Macomber, Taunton, Mass. BROWN L. BRUSIE	1	1	1
	6	GUY L, ch g (3) Adioo Guy—Patchetta by Joe Patchen, the 2nd L. K. Bullen, Detroit, Mich. BLUE-GOLD H. HARVEY	3	2	2
	7	WINNIE DALE, br m (6) Abbedale—Biddie Direct by Braden Direct D. Eugene Frey, York, Pa. PURPLE-WHITE E. McGRATH	7	7	6
	8	MARCHING PETER, gr g (7) Peter Worthy—Silver March by Prince March E. L. Mansfield, Hoboken, N. J. GREEN E. MANSFIELD	6	5	4
	9	LAURA GRATTAN, b m (1) Grattan Direct—Frances by Sidney Prince R. C. Lasbury, South Windsor, Conn. GREEN J. KINGSLEY			

.08 .07½ .11¼

Winnie Dale



SECOND EVENT

FOALS OF 1928

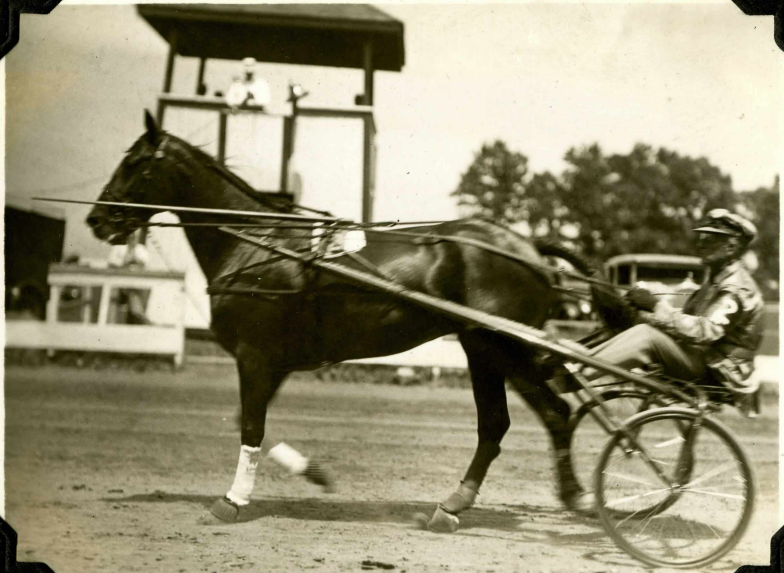
PURSE \$2,000

TROTTING—TWO IN THREE
POSITIONS ()

1	CALUMET BOSS, b c (7) Truax—Margaret Chenault by Peter Chenault John A. Pilgard, Hartford, Conn. BLACK W. CROZIER (8)	53	44
2	SHORT HILLS, b c Mr. McElwyn—Mary Emily by the Northern Man H. Stacy Smith, Newark, N. J. GREEN-RED W. HODSON (1)	11	
3	NELDA VOLO, br f (1) Peter Volo—Nelda Dillon by Dillon Axworthy E. J. Kirby, Goshen, N. Y. GREEN E. KIRBY (4)	6	60
4	BETTY CURTIS, b f (2) Atlantic Express—Miss Azoff by Azoff Gerald & Draper, Milton, Mass. GREEN-RED W. FLEMMING (3)	36	
5	PYRAMUS, b c Worthy Peter—Adele I. Dillon, by Dillon Axworthy C. W. Knibb, Providence, R. I. BROWN-GOLD A. MARTIN (3)	75	
6	CALUMET BURNHAM, b c Belwin—Lotto Watts by General Watts George R. Ford, Windsor, Conn. BLACK, RED H. BRUSIE (6)	24	44
7	LEW JENNINGS, b c Lew Axworthy—Noma by Guy Axworthy R. C. McClenathan, Erie, Pa. PURPLE-WHITE E. McGRATH (5)	42	42
8	WHY NOT, b c Guy Axworthy—Princess Nadena by Justice Brooke F. J. Corwin, Riverhead, N. Y. BROWN S. BECKER		11

13

Short Hills



THIRD EVENT

FOALS OF 1929

PURSE \$1,000

PACING—TWO IN THREE
POSITIONS ()

1	1	CALUMET CHRISTINE, b f (1) Belwin—Christine Carnathan by Tregantle Thomas Hunt, Danbury, Conn. GREEN-WHITE L. PRATT	3	3	3
3	2	NEWBROOK VOLO, b c (3) Peter Volo—Levasia by Lee Tide H. Stacy Smith, Newark, N. J. GREEN-RED W. HODSON	2	1	1
2	4	RAYTOWN, blk c (2) Mr. McElwyn—Lakeland J. by Malcolm Forbes Blue Ridge Stables, Kansas City, Mo. GREEN-GOLD W. BRITENFIELD	1	2	2

.12 .13½ .15¾

TOMORROW'S RACES
 2:12 TROT, \$10,000—12 ENTRIES
 2:14 TROT—\$1,000
 THREE-YEAR-OLD PACE
 2:20 TROT (OPEN)