

3-2010

Zoning Map City of Old Town

Old Town (Me.)

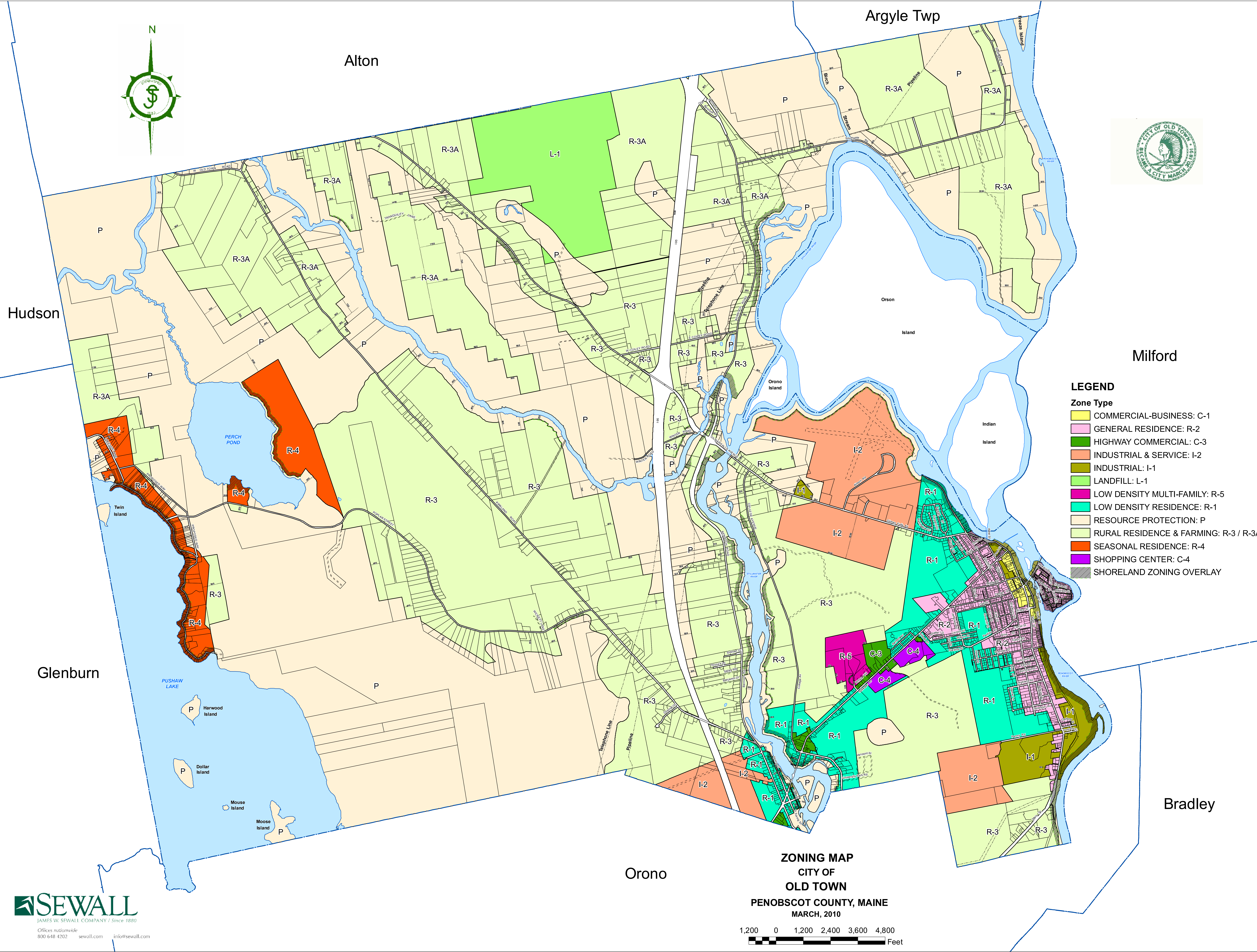
James W. Sewall Company

Follow this and additional works at: <https://digitalcommons.library.umaine.edu/towndocs>

Repository Citation

Old Town (Me.) and James W. Sewall Company, "Zoning Map City of Old Town" (2010). *Maine Town Documents*. 585.
<https://digitalcommons.library.umaine.edu/towndocs/585>

This Map is brought to you for free and open access by DigitalCommons@UMaine. It has been accepted for inclusion in Maine Town Documents by an authorized administrator of DigitalCommons@UMaine. For more information, please contact um.library.technical.services@maine.edu.



LEGEND

Zone Type

- COMMERCIAL-BUSINESS: C-1
- GENERAL RESIDENCE: R-2
- HIGHWAY COMMERCIAL: C-3
- INDUSTRIAL & SERVICE: I-2
- INDUSTRIAL: I-1
- LANDFILL: L-1
- LOW DENSITY MULTI-FAMILY: R-5
- LOW DENSITY RESIDENCE: R-1
- RESOURCE PROTECTION: P
- RURAL RESIDENCE & FARMING: R-3 / R-3A
- SEASONAL RESIDENCE: R-4
- SHOPPING CENTER: C-4
- SHORELAND ZONING OVERLAY

ZONING MAP
CITY OF
OLD TOWN
PENOBSCOT COUNTY, MAINE
MARCH, 2010

