

2010

# Town of Palermo Shoreland Zoning Map

Palermo (Me.)

Follow this and additional works at: <https://digitalcommons.library.umaine.edu/towndocs>

---

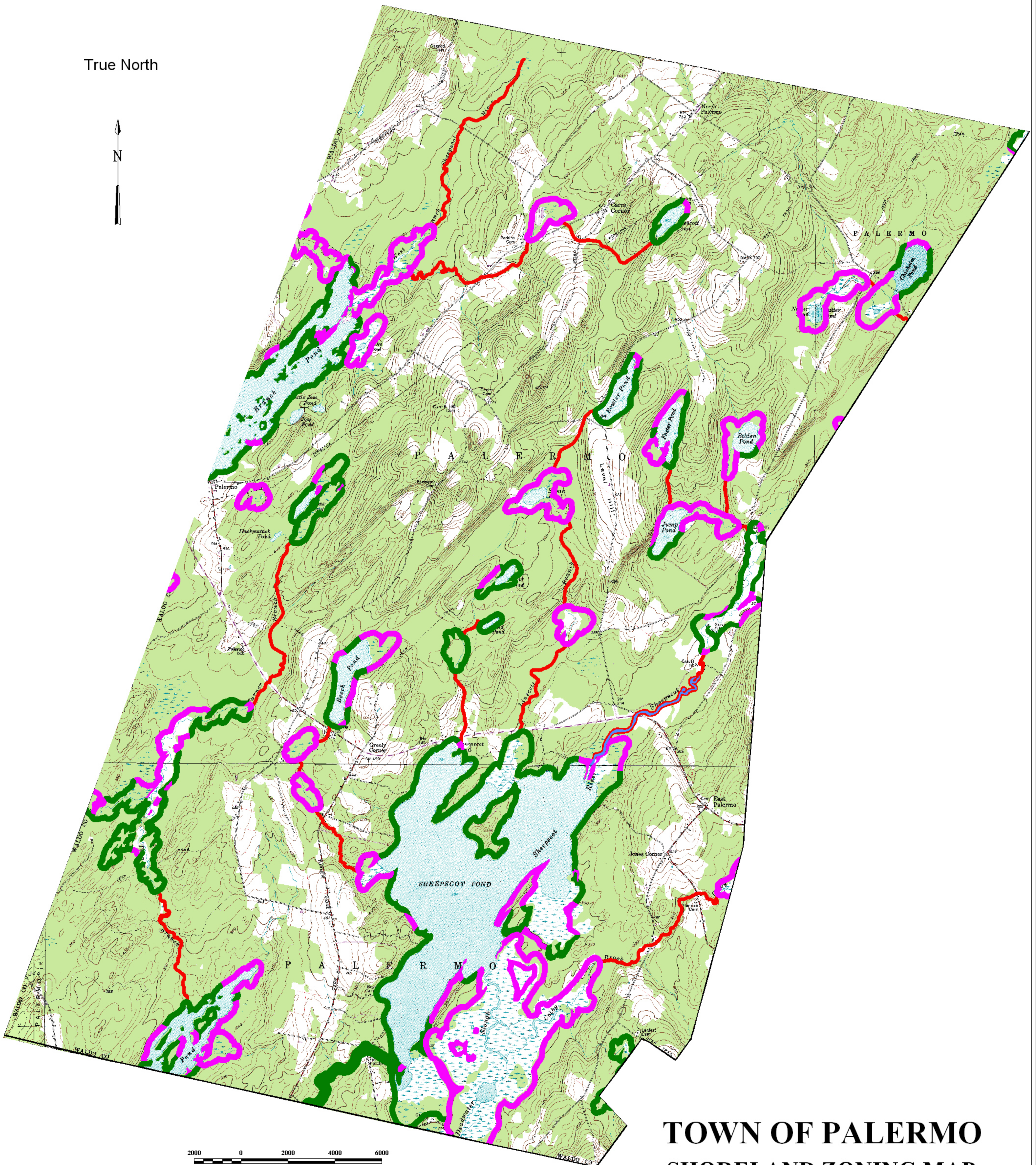
## Repository Citation

Palermo (Me.), "Town of Palermo Shoreland Zoning Map" (2010). *Maine Town Documents*. 671.  
<https://digitalcommons.library.umaine.edu/towndocs/671>

This Map is brought to you for free and open access by DigitalCommons@UMaine. It has been accepted for inclusion in Maine Town Documents by an authorized administrator of DigitalCommons@UMaine. For more information, please contact [um.library.technical.services@maine.edu](mailto:um.library.technical.services@maine.edu).

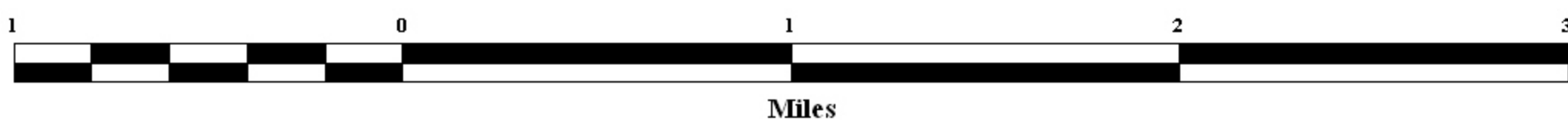
# TOWN OF PALERMO SHORELAND ZONING MAP

True North



2000 0 2000 4000 6000  
US Survey Feet

Scale: 1:24,000



## TOWN OF PALERMO SHORELAND ZONING MAP

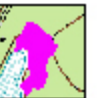

EFFECTIVE DATE: MARCH 13, 2010

TOWN CLERK: \_\_\_\_\_

### NOTES

1. Mapped Wetlands: This map shows non-forested areas, 10 acres or greater identified using the National Wetlands Inventory Maps, as prepared by the U.S. Department of Interior. Field verification of the location of the actual wetland boundaries should be undertaken prior to development.
2. Wetland areas contiguous with, and at the same elevation as the normal high water line of great ponds, rivers and streams are considered part of those waterbodies.

### KEY

- RESOURCE PROTECTION DISTRICT .... 
- LIMITED RESIDENTIAL DISTRICT..... 
- STREAM PROTECTION DISTRICT ..... 