

The University of Maine DigitalCommons@UMaine

Maine Town Documents

Maine Government Documents

2011

Town of Orrington Land Use Map

Orrington (Me.)

Amy Quist

Louis Morin

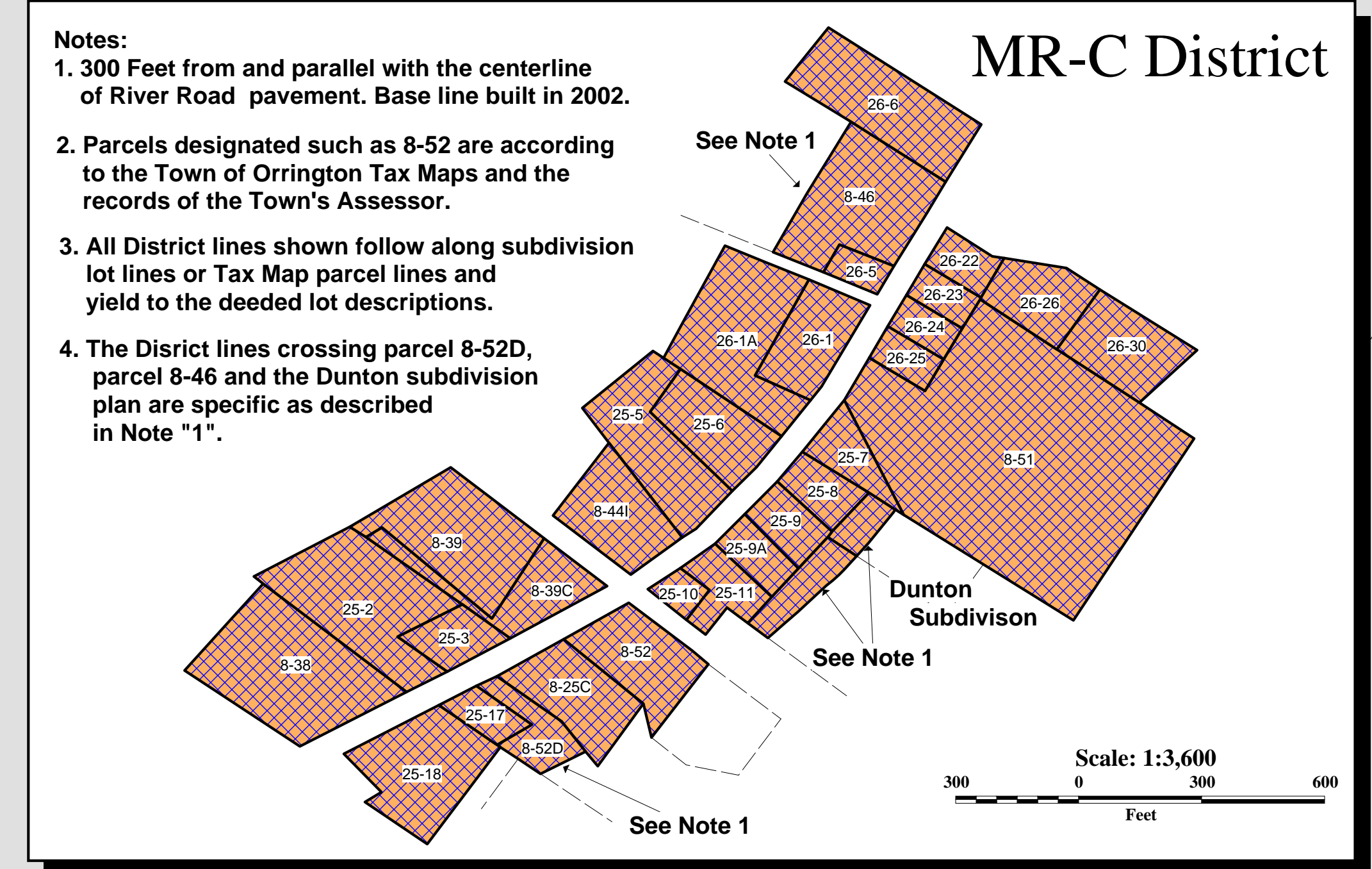
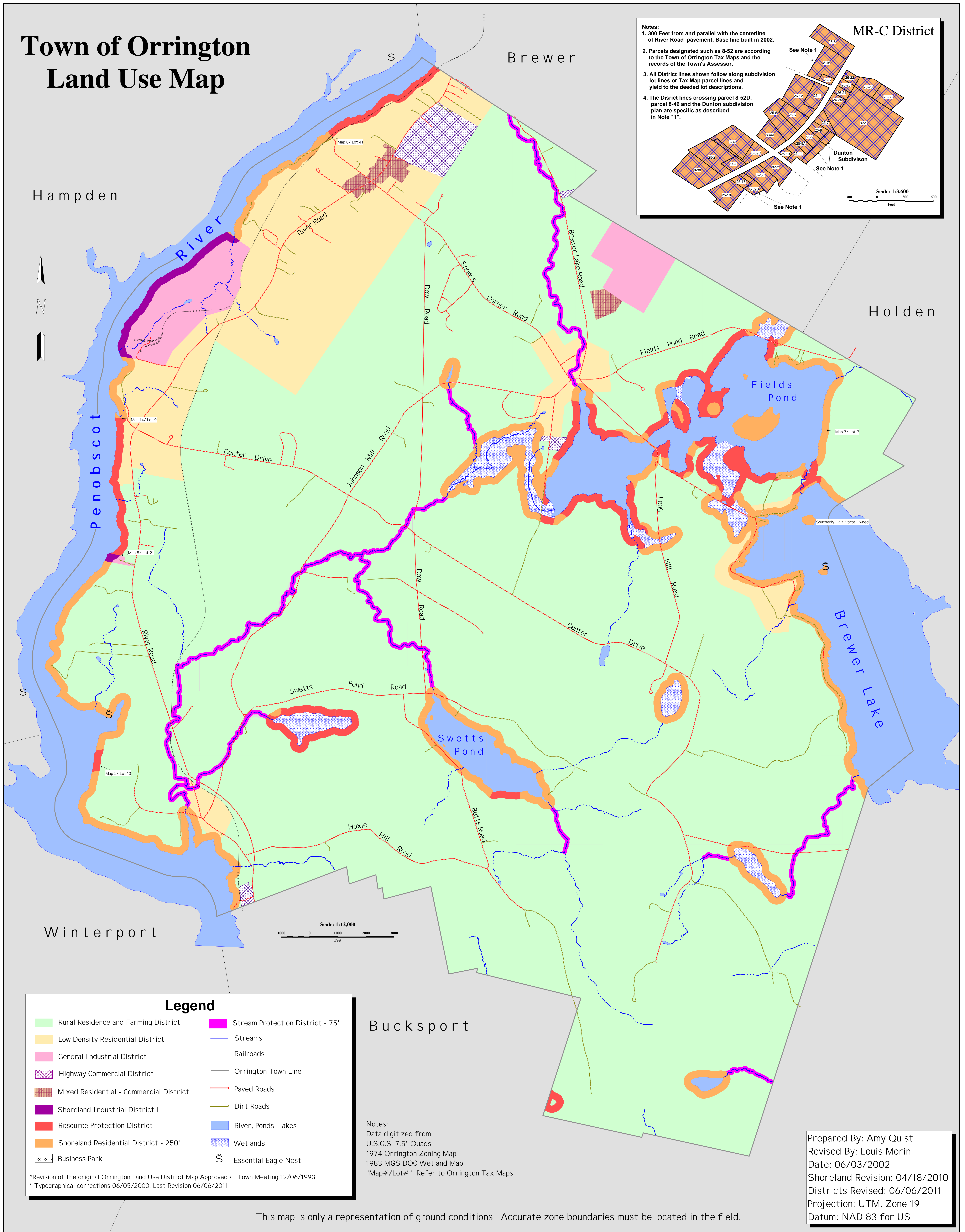
Follow this and additional works at: <https://digitalcommons.library.umaine.edu/towndocs>

Repository Citation

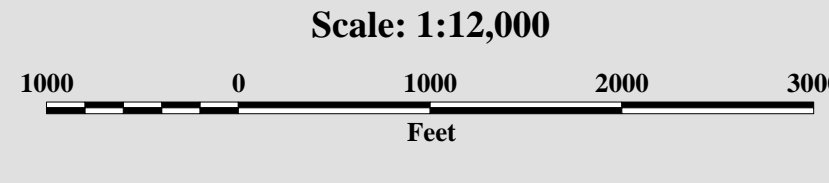
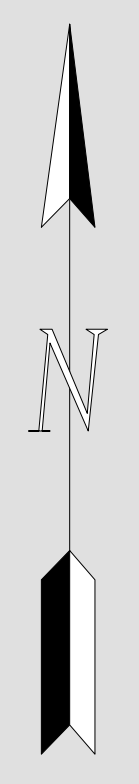
Orrington (Me.); Quist, Amy; and Morin, Louis, "Town of Orrington Land Use Map" (2011). *Maine Town Documents*. 643.
<https://digitalcommons.library.umaine.edu/towndocs/643>

This Map is brought to you for free and open access by DigitalCommons@UMaine. It has been accepted for inclusion in Maine Town Documents by an authorized administrator of DigitalCommons@UMaine. For more information, please contact um.library.technical.services@maine.edu.

Town of Orrington Land Use Map



- Notes:
1. 300 Feet from and parallel with the centerline of River Road pavement. Base line built in 2002.
 2. Parcels designated such as 8-52 are according to the Town of Orrington Tax Maps and the records of the Town's Assessor.
 3. All District lines shown follow along subdivision lot lines or Tax Map parcel lines and yield to the deeded lot descriptions.
 4. The District lines crossing parcel 8-52D, parcel 8-46 and the Dunton subdivision plan are specific as described in Note "1".



Legend	
 Rural Residence and Farming District	 Stream Protection District - 75'
 Low Density Residential District	 Streams
 General Industrial District	 Railroads
 Highway Commercial District	 Orrington Town Line
 Mixed Residential - Commercial District	 Paved Roads
 Shoreland Industrial District I	 Dirt Roads
 Resource Protection District	 River, Ponds, Lakes
 Shoreland Residential District - 250'	 Wetlands
 Business Park	S Essential Eagle Nest

Notes:
 Data digitized from:
 U.S.G.S. 7.5' Quads
 1974 Orrington Zoning Map
 1983 MGS DOC Wetland Map
 "Map#/Lot#" Refer to Orrington Tax Maps

Prepared By: Amy Quist
 Revised By: Louis Morin
 Date: 06/03/2002
 Shoreland Revision: 04/18/2010
 Districts Revised: 06/06/2011
 Projection: UTM, Zone 19
 Datum: NAD 83 for US

This map is only a representation of ground conditions. Accurate zone boundaries must be located in the field.