

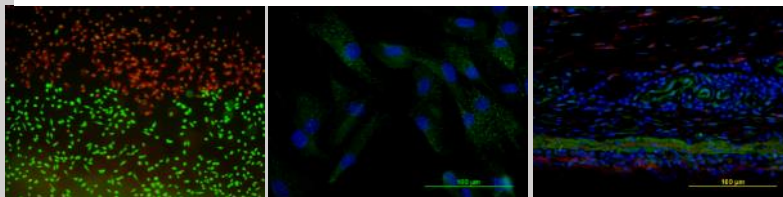
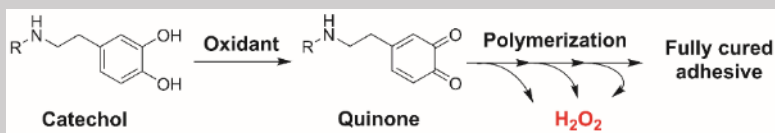


Bruce Lee

Bioadhesive for Tissue Repair and Regeneration



Polymeric Model System Development



Bruce P. Lee

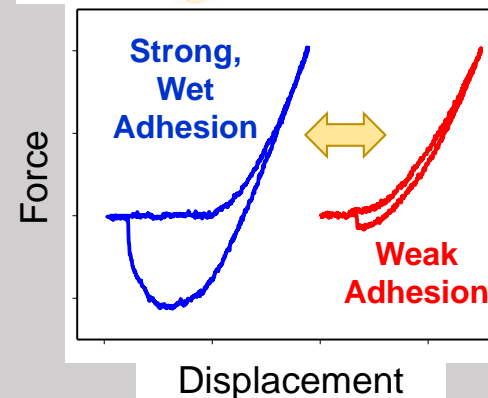
Biomimetic Biomaterials
Polymer Chemistry, Bioadhesive,
Smart Biomaterial and Adhesive



Chemistry from Mussel



Underwater Smart Adhesive



Re-shapeable Gel as Fit-to-Shape Sealant

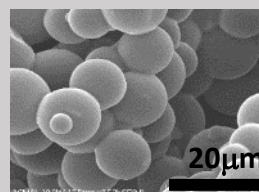


Remoldable Gel

Injectable Seal sutured anastomosis



Adhere to non-flat surface



Recyclable and Anti-Pathogenic Microparticles

