

The University of San Francisco
USF Scholarship: a digital repository @ Gleeson Library |
Geschke Center

Gleeson Library Faculty and Staff Research and
Scholarship

Gleeson Library | Geschke Center

3-28-2019

Throw Out Your Books: Designing Libraries for Their New Roles

Shawn P. Calhoun

Karen A. Cribbins-Kulkin

Joey Favaloro

Follow this and additional works at: <https://repository.usfca.edu/librarian>

Part of the [Education Commons](#), and the [Library and Information Science Commons](#)

THROW OUT YOUR BOOKS

DESIGNING LIBRARIES
FOR THEIR NEW ROLES

Shawn Calhoun

Associate Dean, University of San Francisco

Karen Cribbins-Kuklin

Principal, Gensler

Joey Favaloro

Associate, Gensler

Gensler

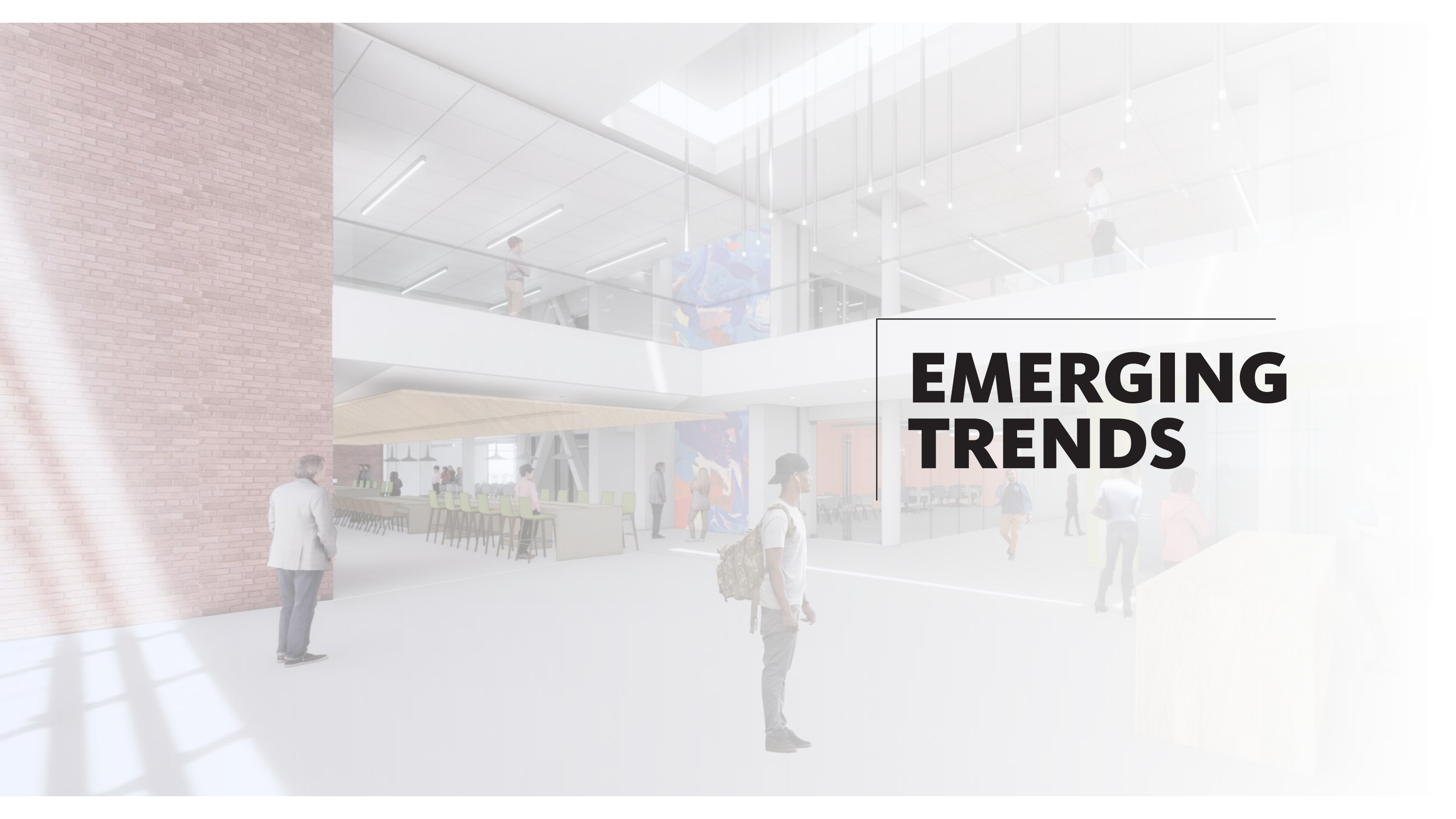


CLIFFS NOTES

- 1 Pilot small library design projects on campus to see how students react and engage.
- 2 Create a dialogue with library administrators and admissions/recruitment professionals to discuss how the library can become an asset.
- 3 Engage campus leaders and students through workshops to imagine a new type of learning space for your campus.
- 4 Develop a plan for the future of your library, even if it starts with “small wins.”

AGENDA

- ① Trends in library design
- ② Case Study: University of California, Berkeley
- ③ Case Study: University of San Francisco
- ④ Discussion



EMERGING TRENDS



45

LIBRARY
LEADERS

**confirmed renewed attention
to the purpose and power of
the campus library as both the
gateway to knowledge, and as the
symbolic center of academic life.**

*-Gensler, Librarians on Libraries: The Future of The
Library from the Perspective of Library Leaders*



TALENT IS CURRENCY

Unlike traditional academic design, libraries are more likely to resemble co-working spaces and startup offices, offering people more choice and control over where and how they work.



PLACE IS PARAMOUNT

Increasingly, libraries are creating atmospheres in which social and academic interests can easily intersect, blurring the line between library and student center.



ANALOG'S NEW HOME

As students utilize books less and less, universities are clearing out the majority of their stacks, moving them to off-site storage facilities, creating room for new programs.

A modern library interior with a wooden slat ceiling, a pool table, and people sitting at tables. The space is bright and open, with large windows and a polished floor. In the foreground, a group of people is seated at a long wooden table, engaged in conversation. In the background, a pool table is visible, and several other people are standing or sitting in the open-plan area. The ceiling features a complex arrangement of wooden slats and recessed lighting.

HAVE A PLAN, STAN

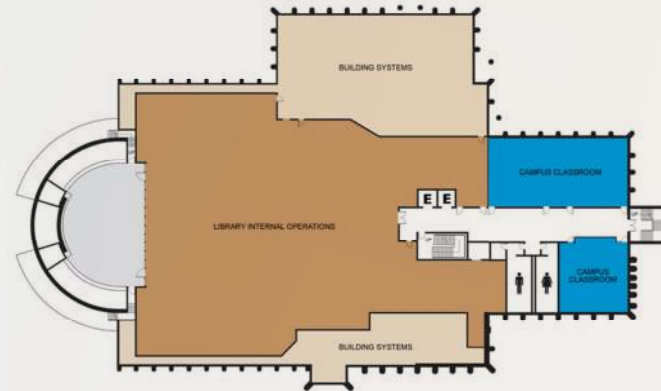
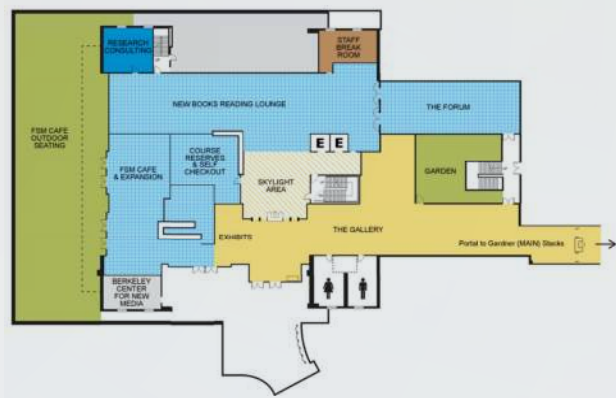
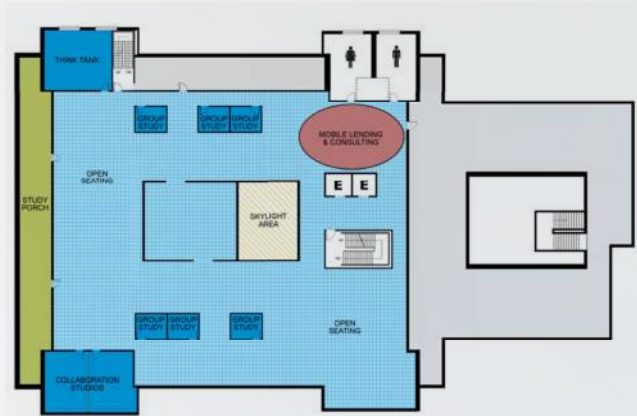
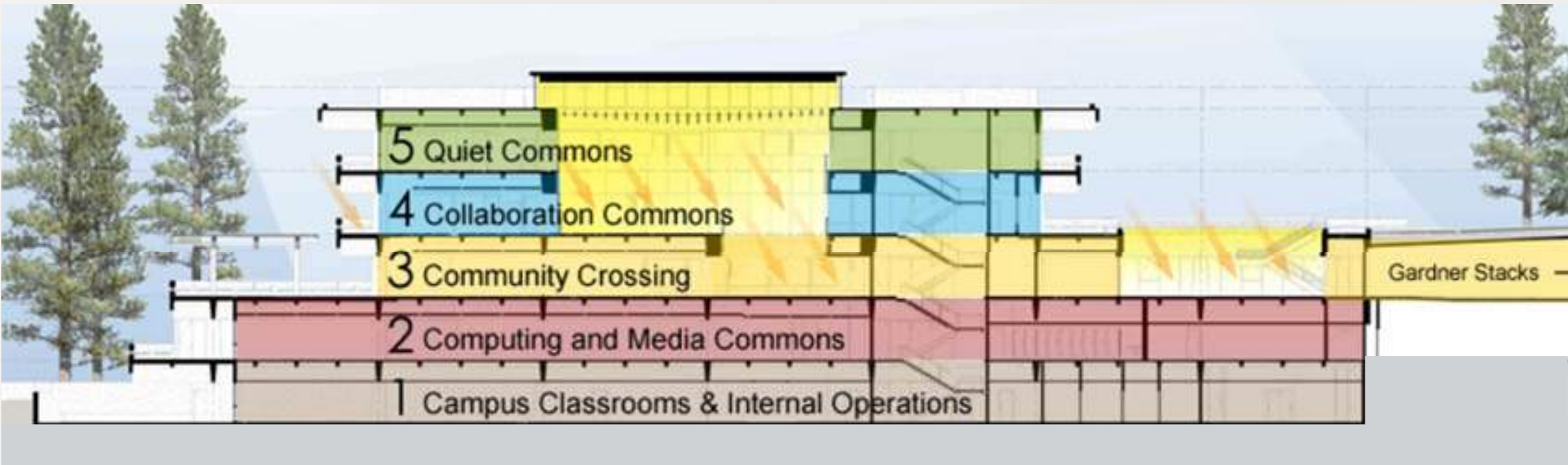
Developing a master plan for your library ensures projects are executed in a way that is rational, sustainable, and effective.

UNIVERSITY OF CALIFORNIA, BERKELEY

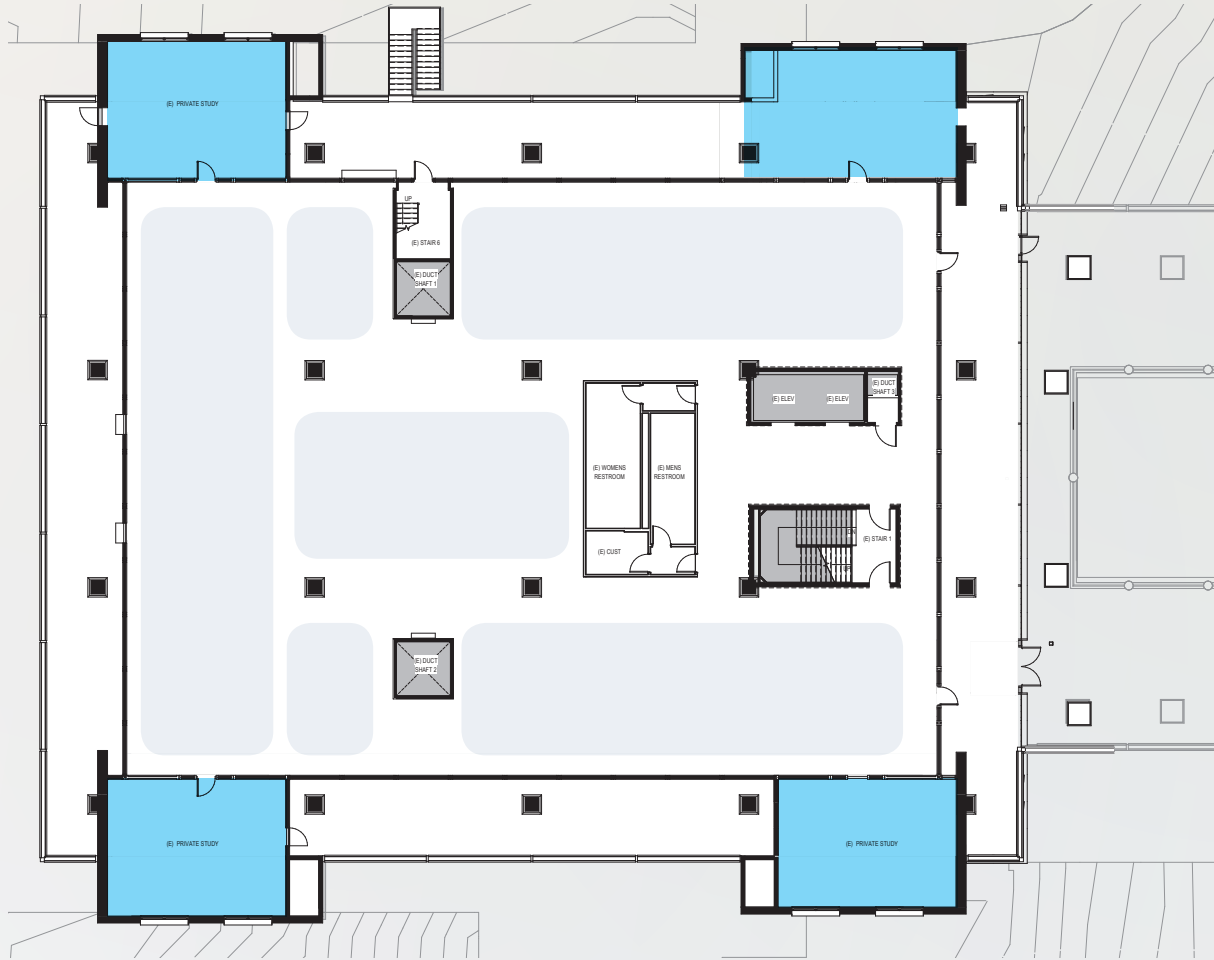
MOFFITT LIBRARY



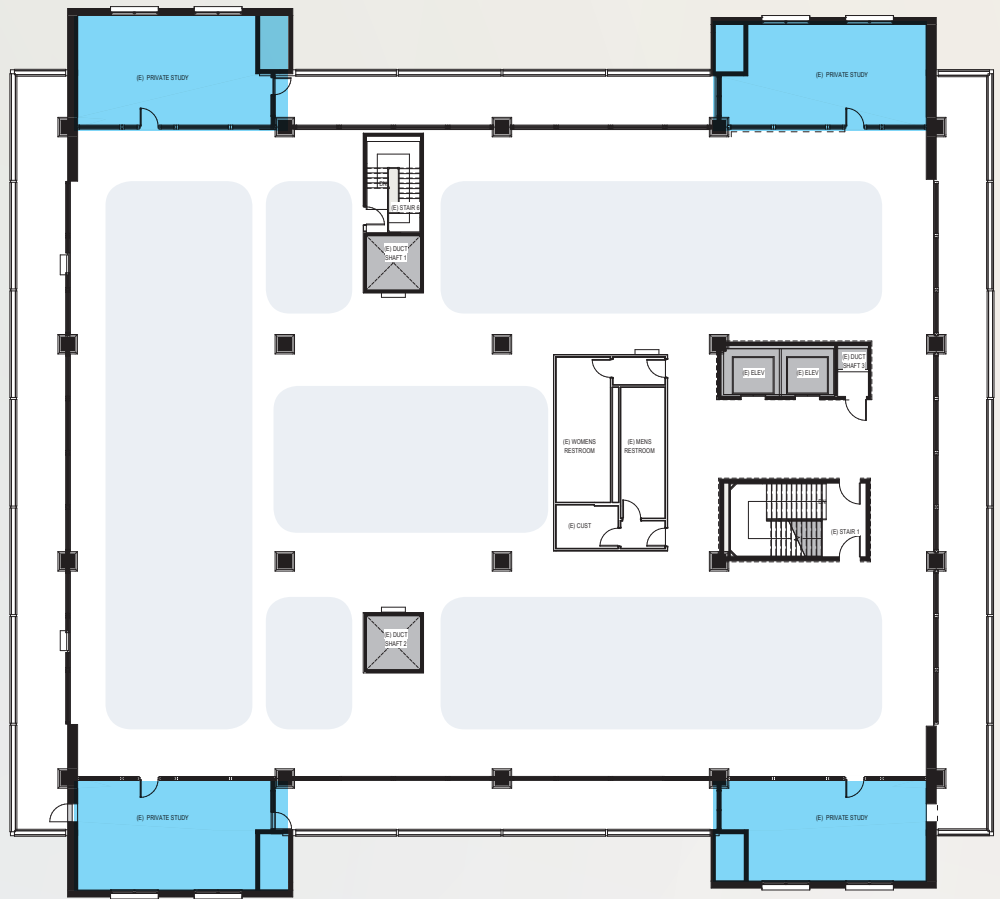
PRE-GENSLER



PRE-GENSLER



4th FLOOR



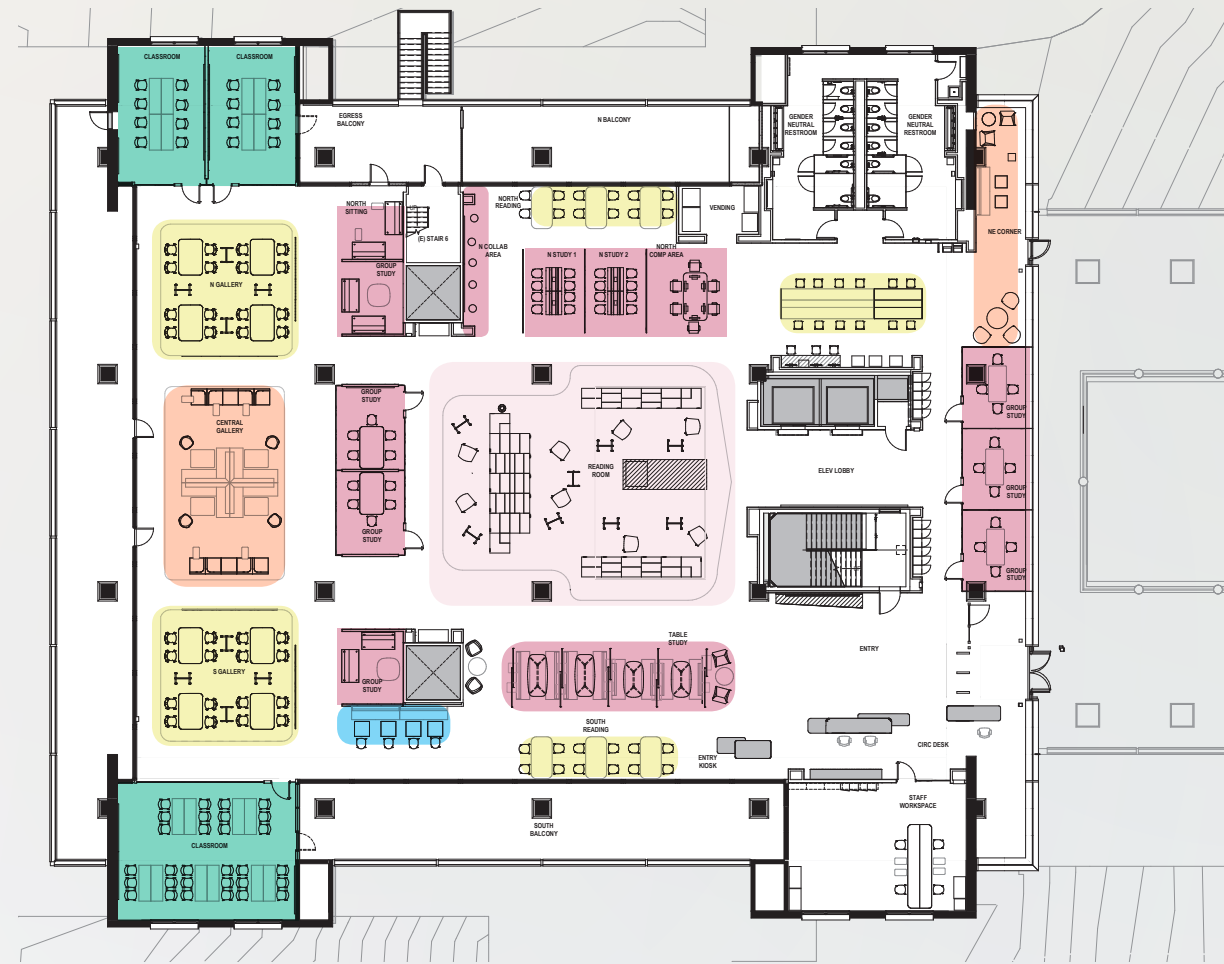
5th FLOOR

■ Private Study ■ Open Study

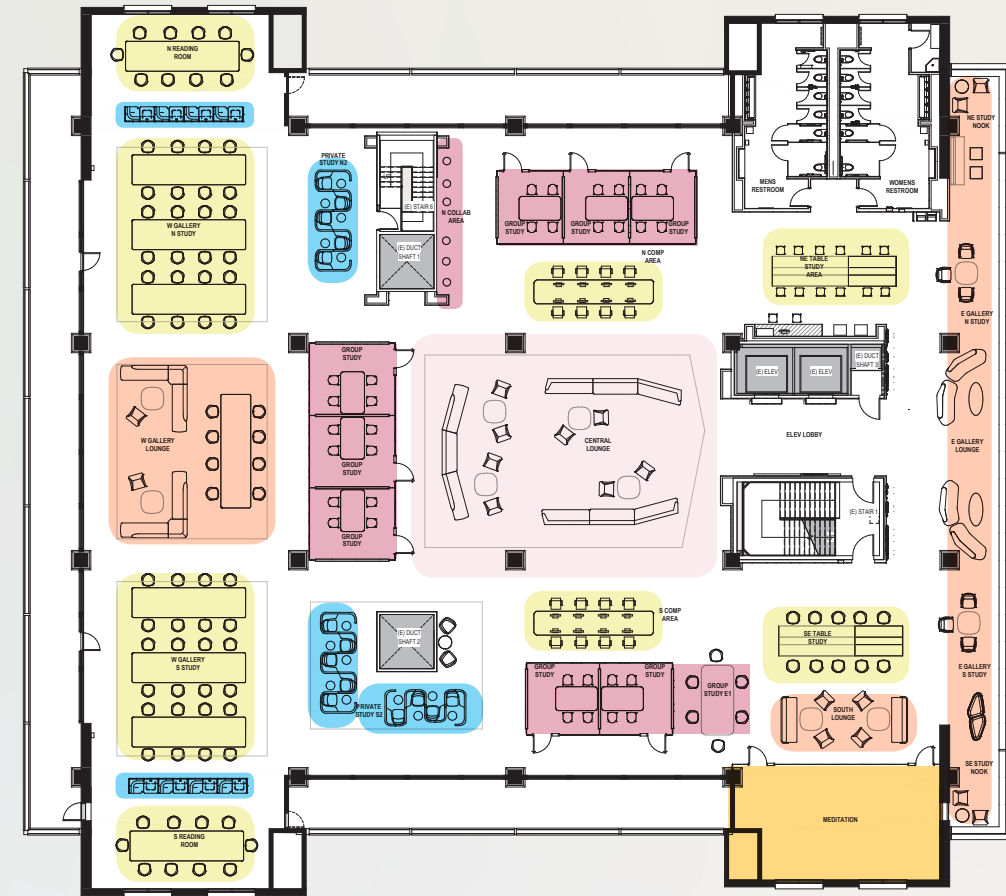




POST-GENSLER



4th FLOOR



5th FLOOR

- Private Study
- Large Group
- Small Group
- Social Seating
- Community Seating
- Wellness
- Classroom















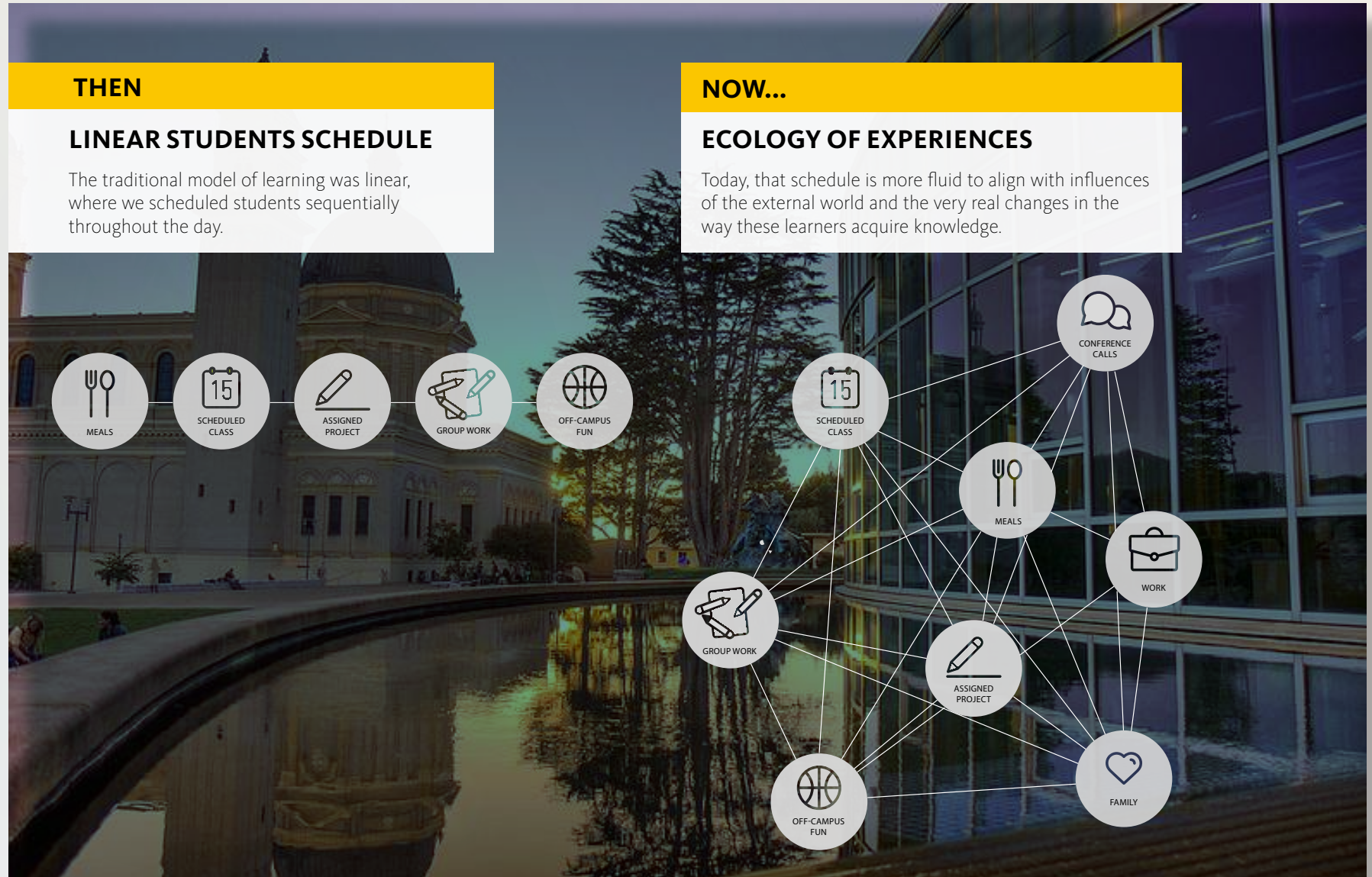


UNIVERSITY OF SAN FRANCISCO

GLEESON LIBRARY-GESCHKE CENTER



STRATEGIC PLAN



STRATEGIC PLAN

USF 2028

FIVE DISTINCT QUALIFIERS

Jesuit Catholic Tradition

The Jesuit tradition is fully committed to the pursuit of academic excellence in the framework of students realizing the fullness of their humanity — of their developing into intelligent, sensitive and responsible members of society. As a Catholic university, USF asserts the centrality of God as a mystery that should engage believers and non-believers alike and the compatibility of faith and reason in the pursuit of truth.

Academic Excellence

The University holds up “excellence as the standard for teaching, scholarship, creative expression and service” (Core Values). USF evidences this commitment to excellence in the core activities of discovering, communicating and applying knowledge.

San Francisco Location

USF contributes to and benefits from the energy, resources, diversity and opportunities of a world-class city on the edge of the Pacific Rim.

Diversity

USF prepares students for the complexities of a diverse and interdependent world through curricular and co-curricular offerings which capitalize on the differences within the city and the university.

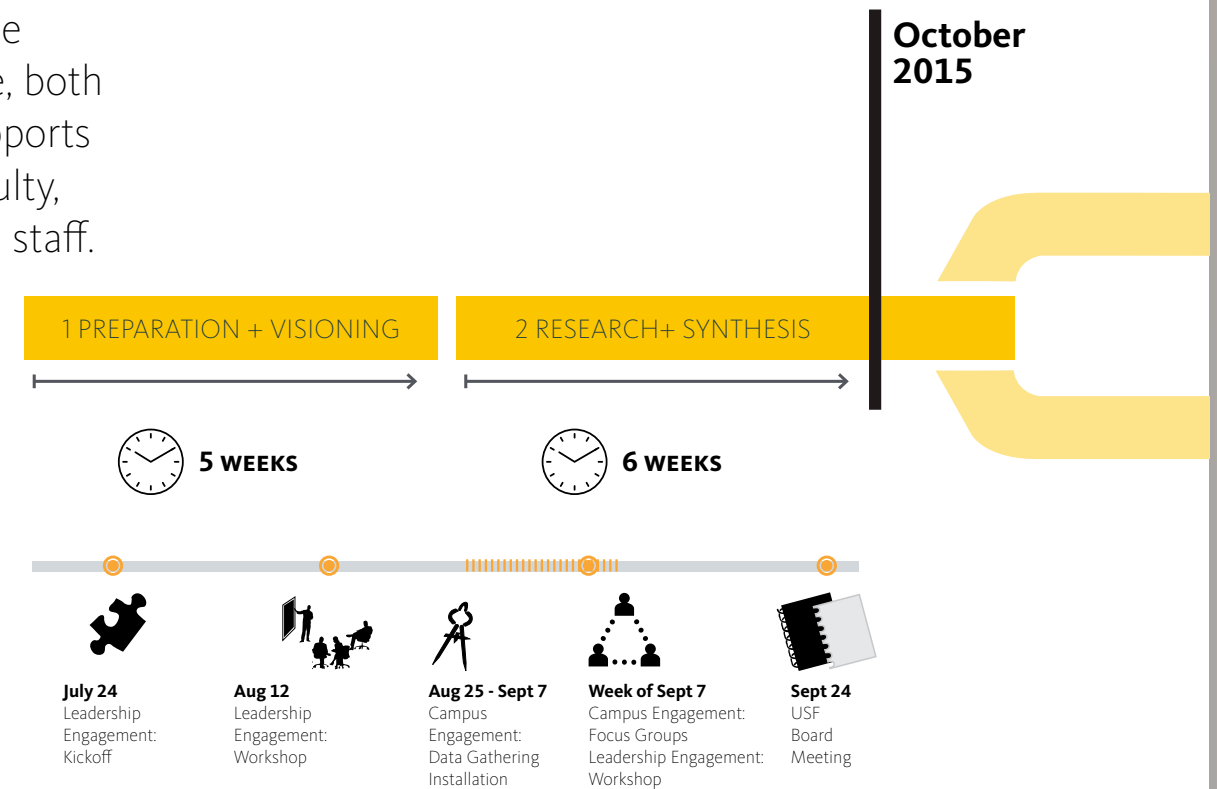
Global Perspective

USF educates students to responsible global citizenship in an increasingly interdependent world that offers innumerable opportunities for good, but is also home to two billion people who struggle to survive on \$2 a day or less.

STRATEGIC PLAN

STUDY OVERVIEW

Our 11-week study, now at its end, explored and studied possible futures for Gleeson-Geschke, both physical and virtual, as it supports the backbone of USF: its faculty, students, administration and staff.



TOOLS FOR ENGAGEMENT

2 Library Leadership Workshops	42 Peer + Inspirational Benchmarks Studied
Hundreds of Data Points Analyzed	4 Site Visits and Observations Conducted
2 Campus Engagement Installations Launched	4 Leader Interviews Conducted
5 Emerging Insights Identified	5 Territories for Exploration in Phase 2 Identified



CAMPUS ENGAGEMENT

+ Available Resources	- Research Guidance
Individual Study Space	Collaborative Space
Opportunities to Connect	No Interdisciplinary Space



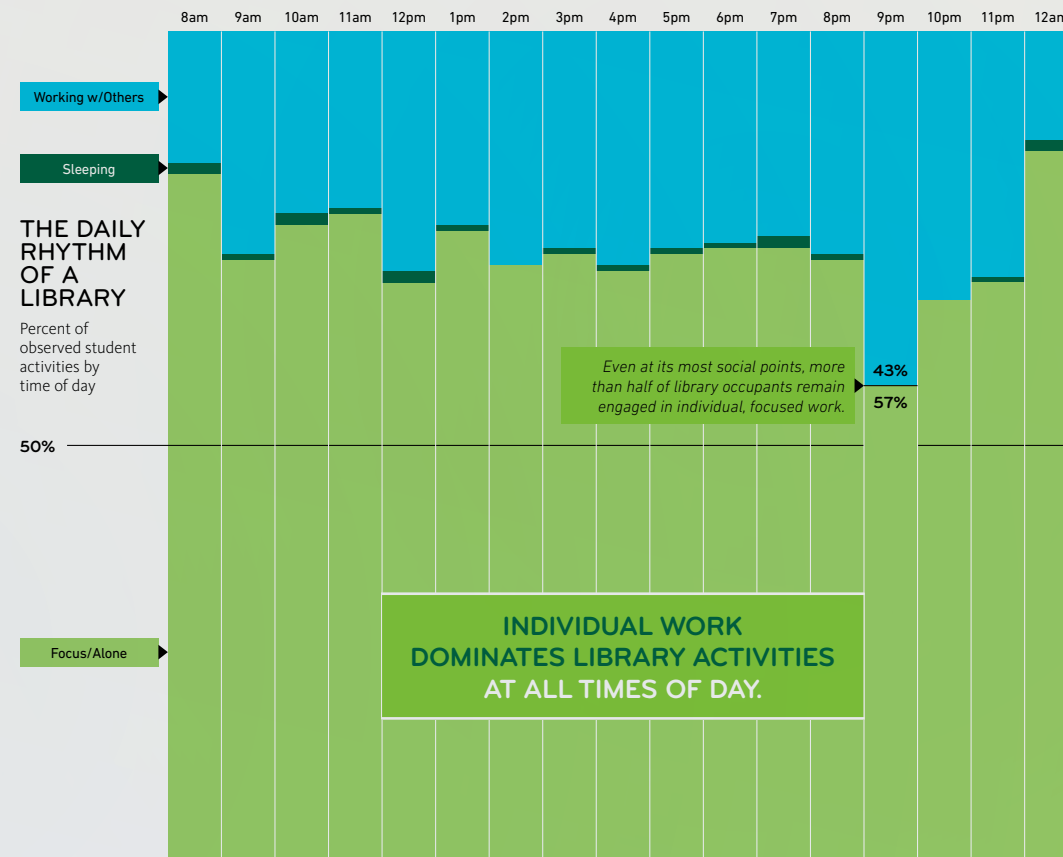
FINDINGS

GENSLER RESEARCH

We are conducting a multiyear investigation to understand what's working, what isn't, and what the future might hold for today's academic libraries.

Our first step was to conduct observational analyses of seven academic libraries in the US and UK.

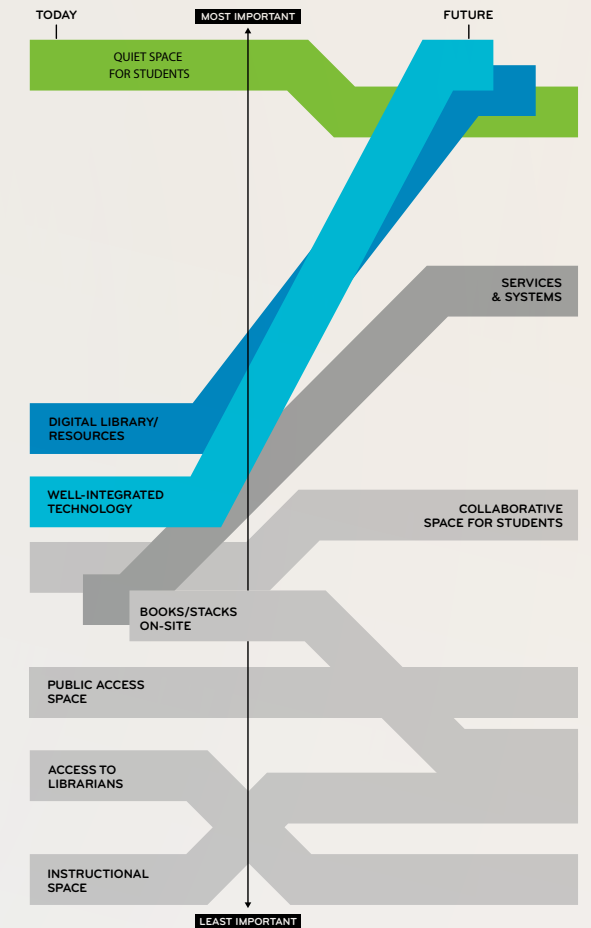
USF's Gleeson Library contributed to the study in 2013.



SURVEY SAYS...

Our research surveyed over 1,200 students from across the US to understand study habits and preferences of today's students.

Outcomes of our study showed that quiet space for students still ranked at the top of most important library resources.



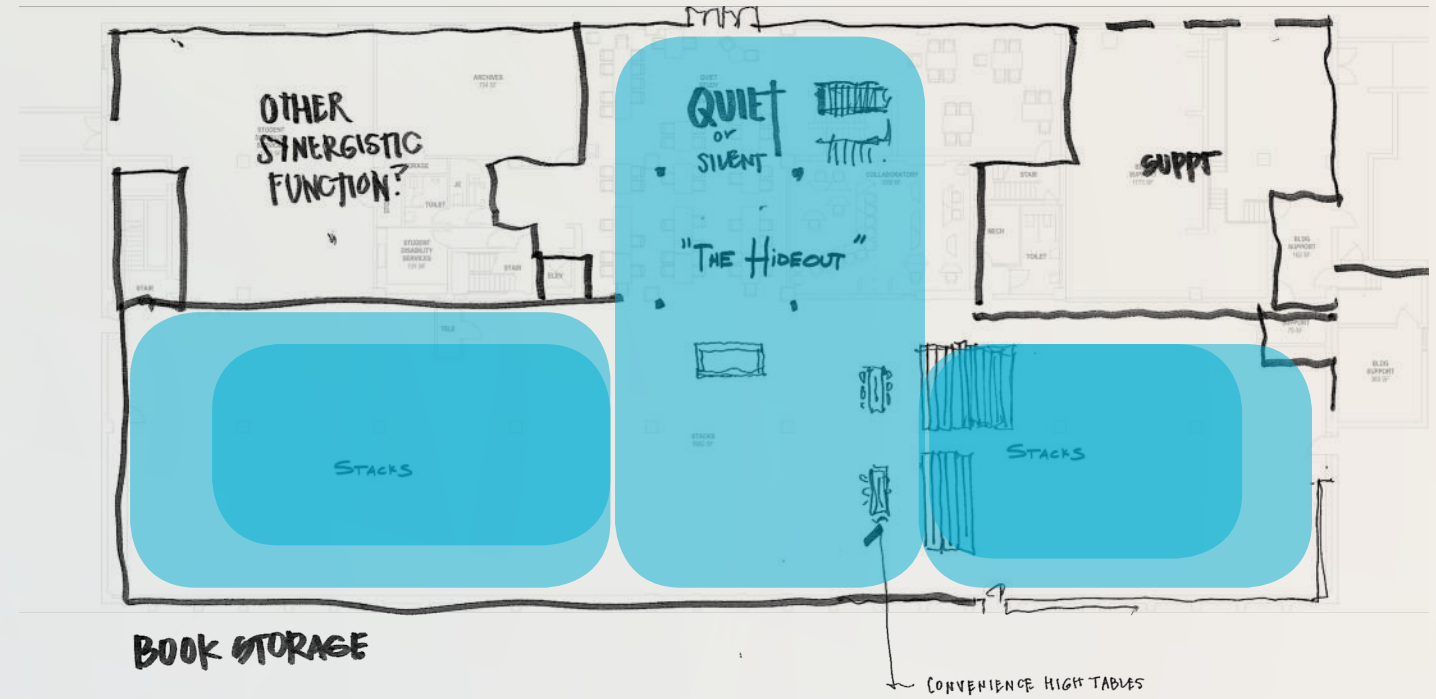
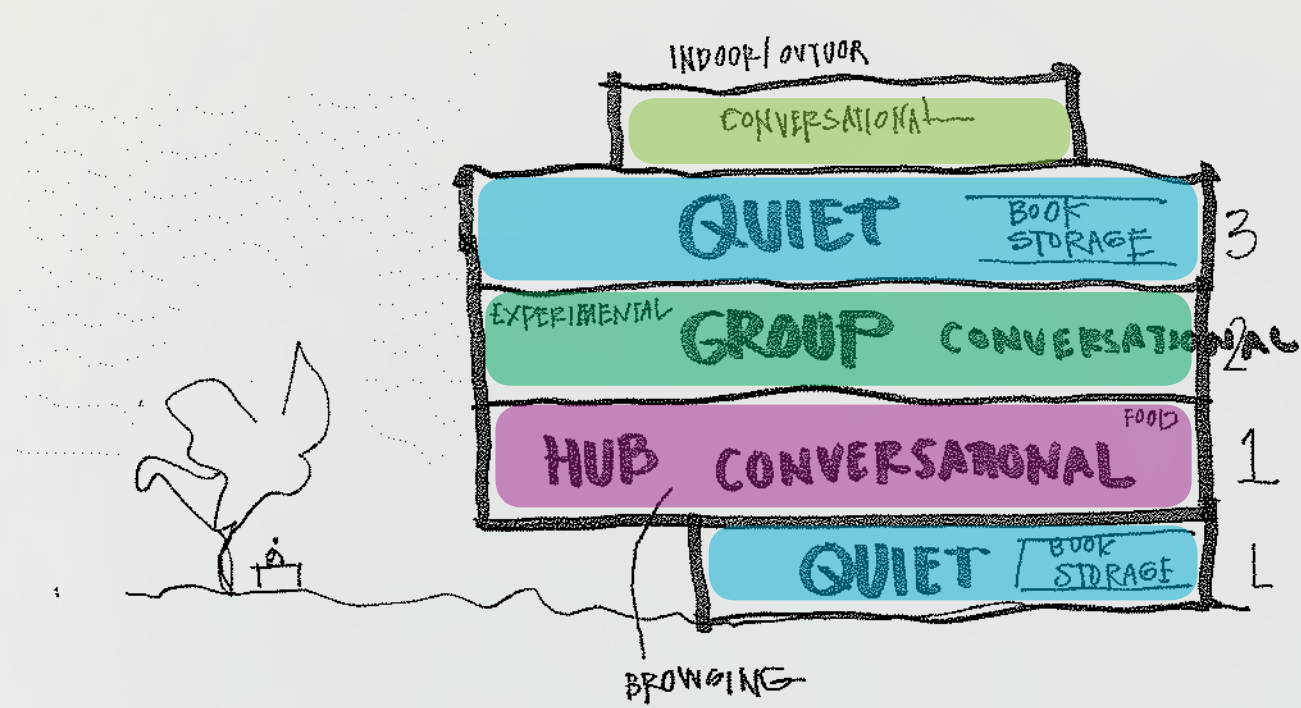
QUICK WINS

are essential to make change manifest, build momentum, provoke + involve, promote ownership, and create dialogue.

QUICK WINS

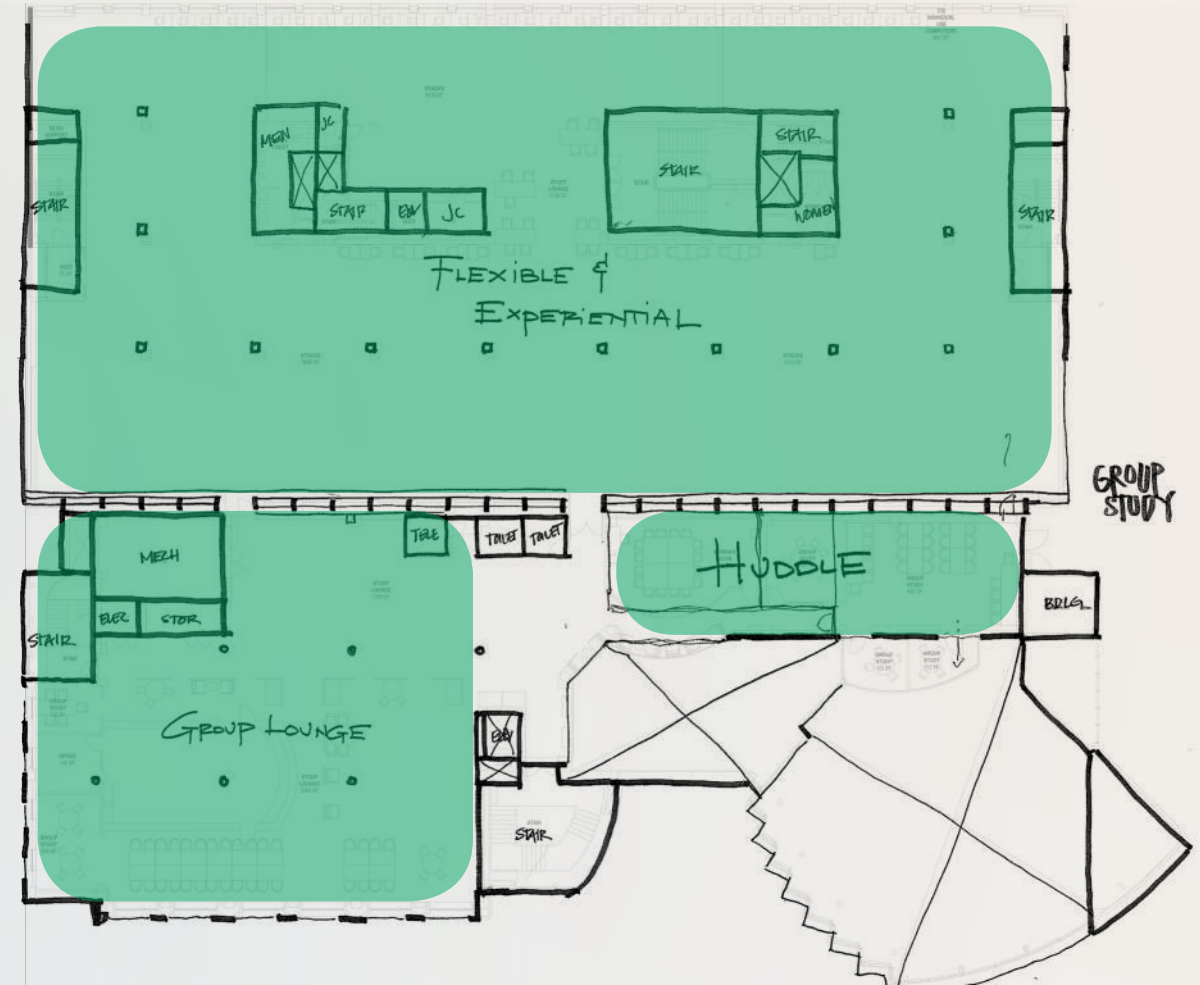
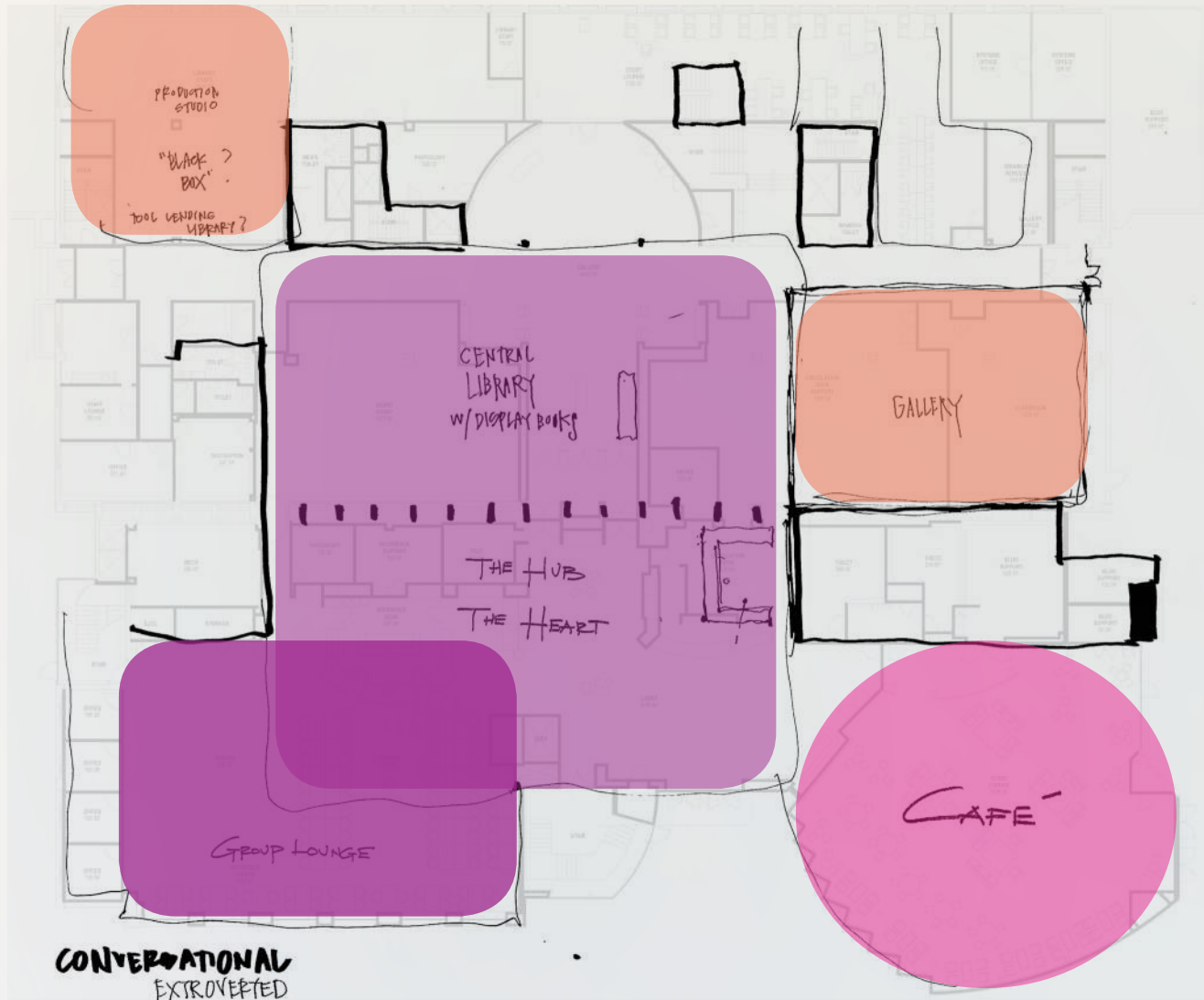
- 01**
ENHANCE THE ENTRY SEQUENCE
- 02**
INFUSE FOOD + DRINK
- 03**
OFFER SEAMLESS PLUG + PLAY TECH
- 04**
REMOVE BOUND PERIODICAL STACKS
- 05**
TRANSFORM THE 4TH FLOOR INTO AN ICONIC READING ROOM
- 06**
ENHANCE BALANCE OF COLLABORATION AND FOCUS SPACE

MASTER PLAN

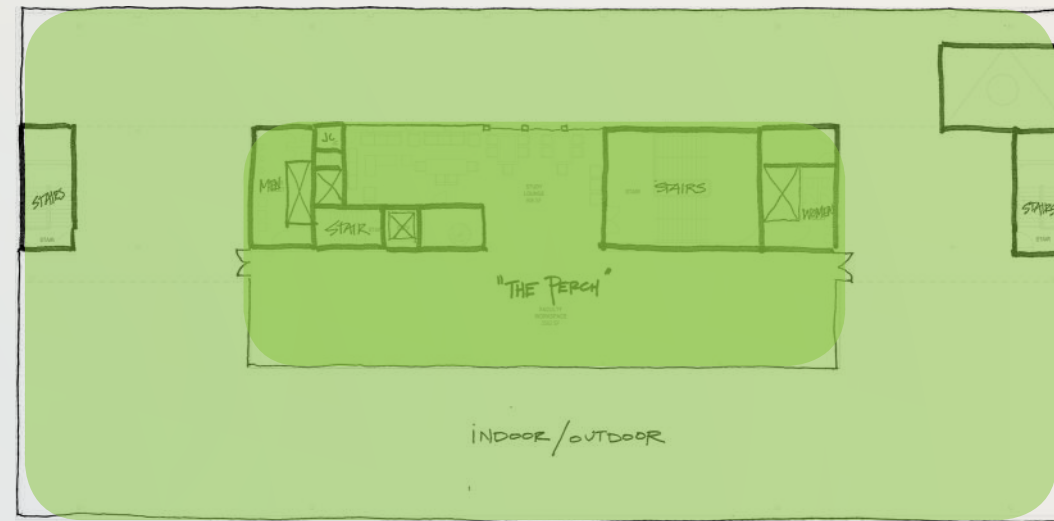


A DIFFERENT & COMPELLING CHARACTER for EACH FLOOR

MASTER PLAN



MASTER PLAN













BIG WINS

are critical to inspire community, differentiate the campus meaningfully, and enhance the USF brand.

BIG IDEAS

- 01 DENSIFY PRINT STACKS TO FREE UP ONE-THIRD OF THE FACILITY**
- 02 GO BACK TO THE BONES TO REIMAGINE HOW PEOPLE FLOW**
- 03 SECURITY SEQUENCE OVERHAUL**
- 04 HABITATS FOR EVERY LEARNER + RESEARCHER AT USF**
- 05 MAKE EXPERIENTIAL LEARNING PARAMOUNT**
- 06 INVEST IN NON-PRINT ASSETS + SUPPORT SPACES**



**LET'S
DISCUSS**



Gensler

