

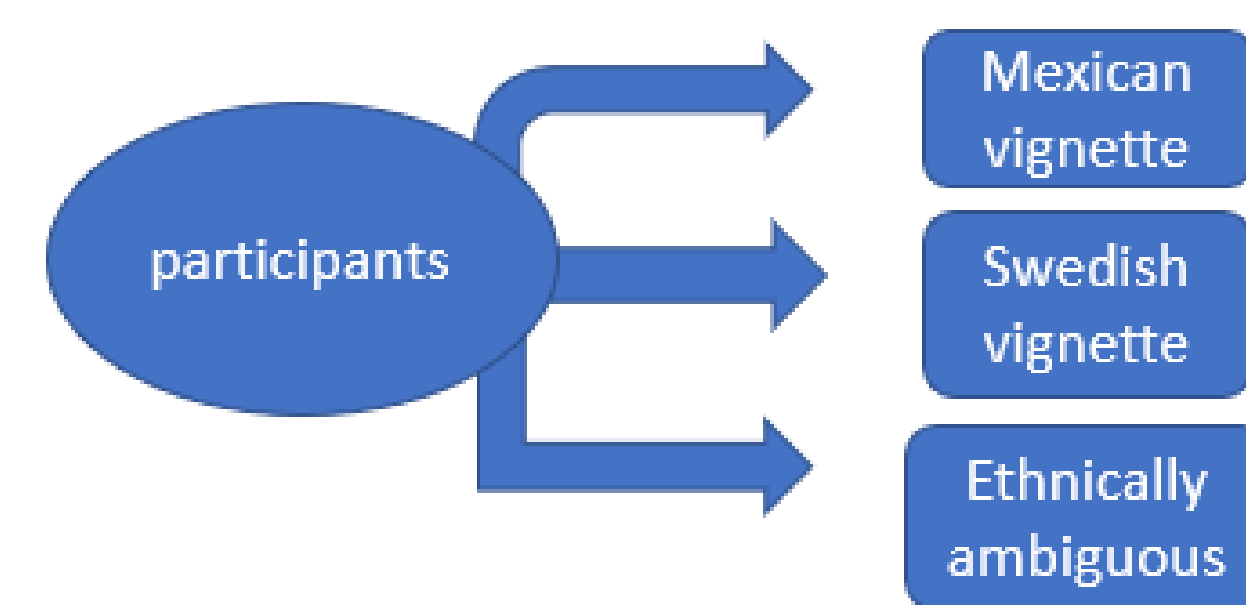
Introduction

- Undocumented immigration in the United States has become a controversial topic in the current media
 - The rapidly growing Latinx population is projected to reach up to 30% of the U.S. population in 2060 (Scott, 2017)
- Haidt and Graham's theory of moral beliefs examine the system of patterns for how an individual reacts to agreeable or disagreeable stimuli (Haidt & Graham, 2007)

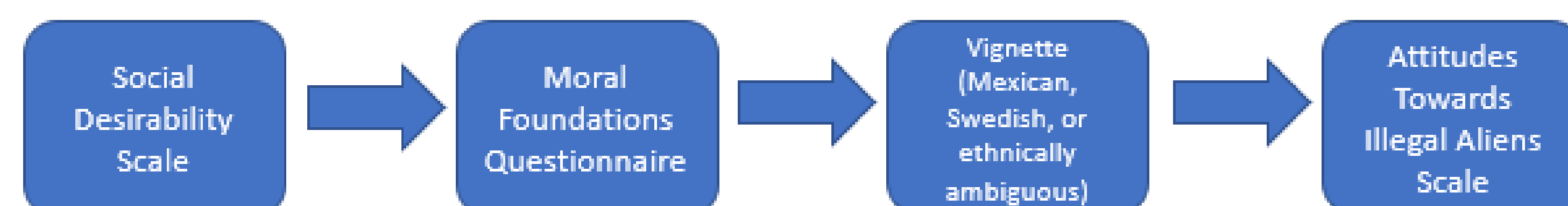
Harm	Fairness	In-group	Authority	Purity
Care	Reciprocity	Loyalty	Respect	Sanctity
- Both prejudice and xenophobia are influential factors when considering individual moral beliefs that stem from individual's preconceived beliefs about another person (Fein & Spencer, 1997; Stephen, Ybarra & Bachman, 1999)
- This study examines moral beliefs over the scope of five moral dimensions and the role of ethnicity in the perception of the immigration population

Method

- The participant scores of the Moral Foundations Questionnaire (MFQ) were compared with participant scores of the Attitudes Towards Illegal Immigrants (IA) Scale to determine the relationship between moral beliefs and perception of undocumented immigrants



- Participants (n = 54): USF Undergraduate students (18-25 years of age) completed a series of questionnaires in the following order

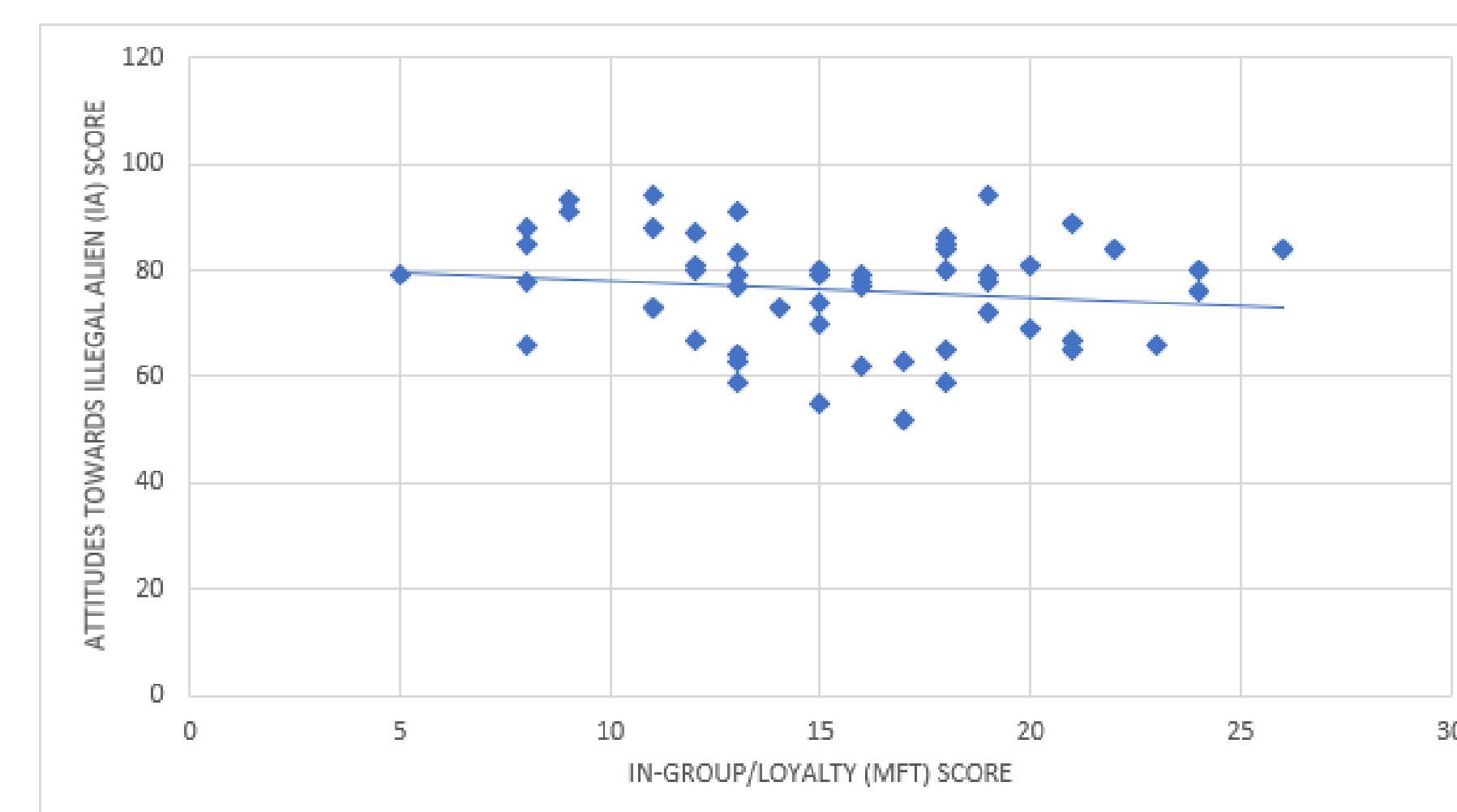
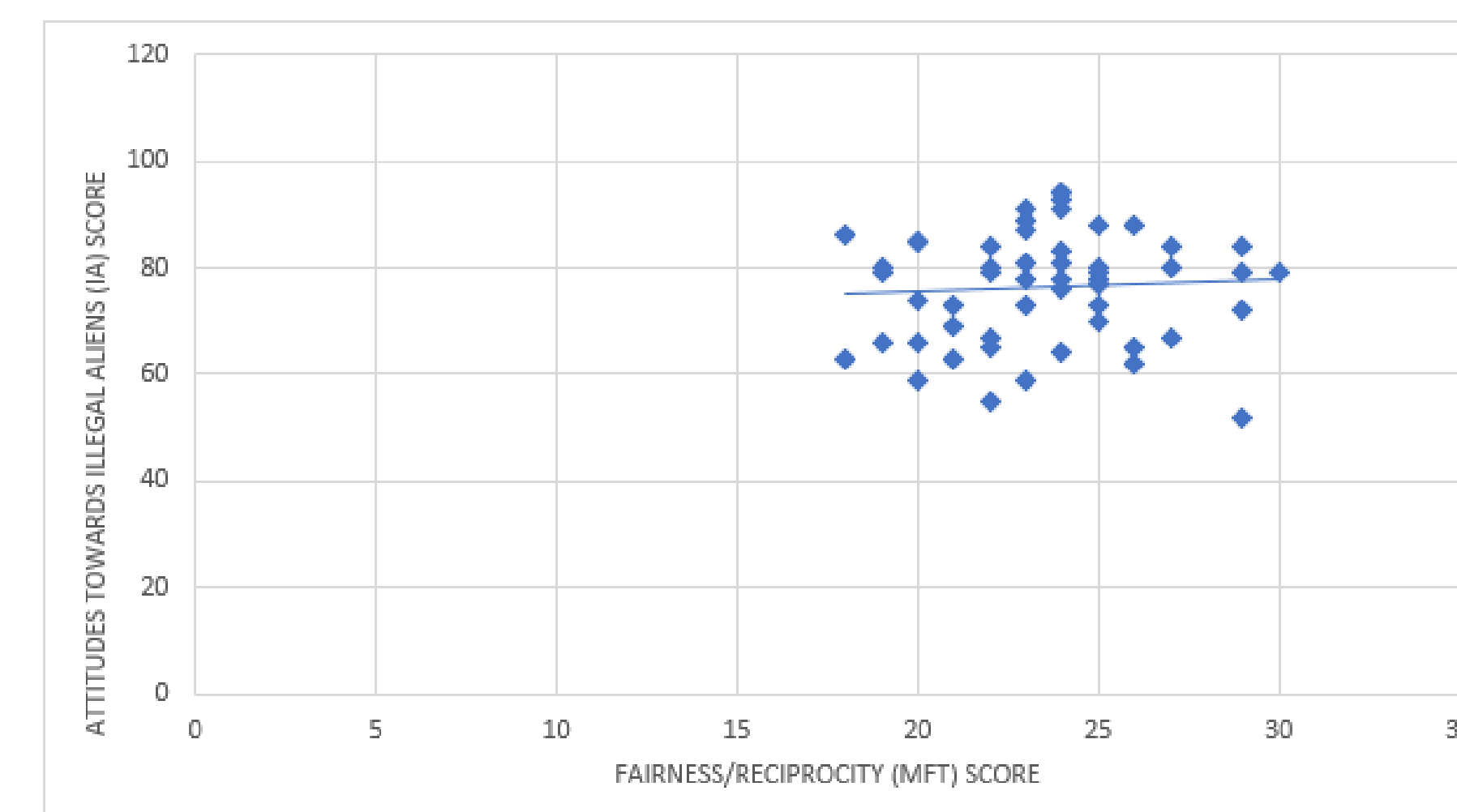


Hypothesis

- Individuals who score more conservative on the MFQ are more likely to reflect more anti-immigration beliefs than individuals who score more liberal on the MFQ.
- Individuals who have read the Mexican vignette will score more negatively on the IA Scale than individuals who read the Swedish or ethnically ambiguous vignette.
- Individuals who have read the Swedish vignette will score more positively on the IA Scale than individuals who read the Mexican or ethnically ambiguous vignette.

Results: MFQ and IA Scale

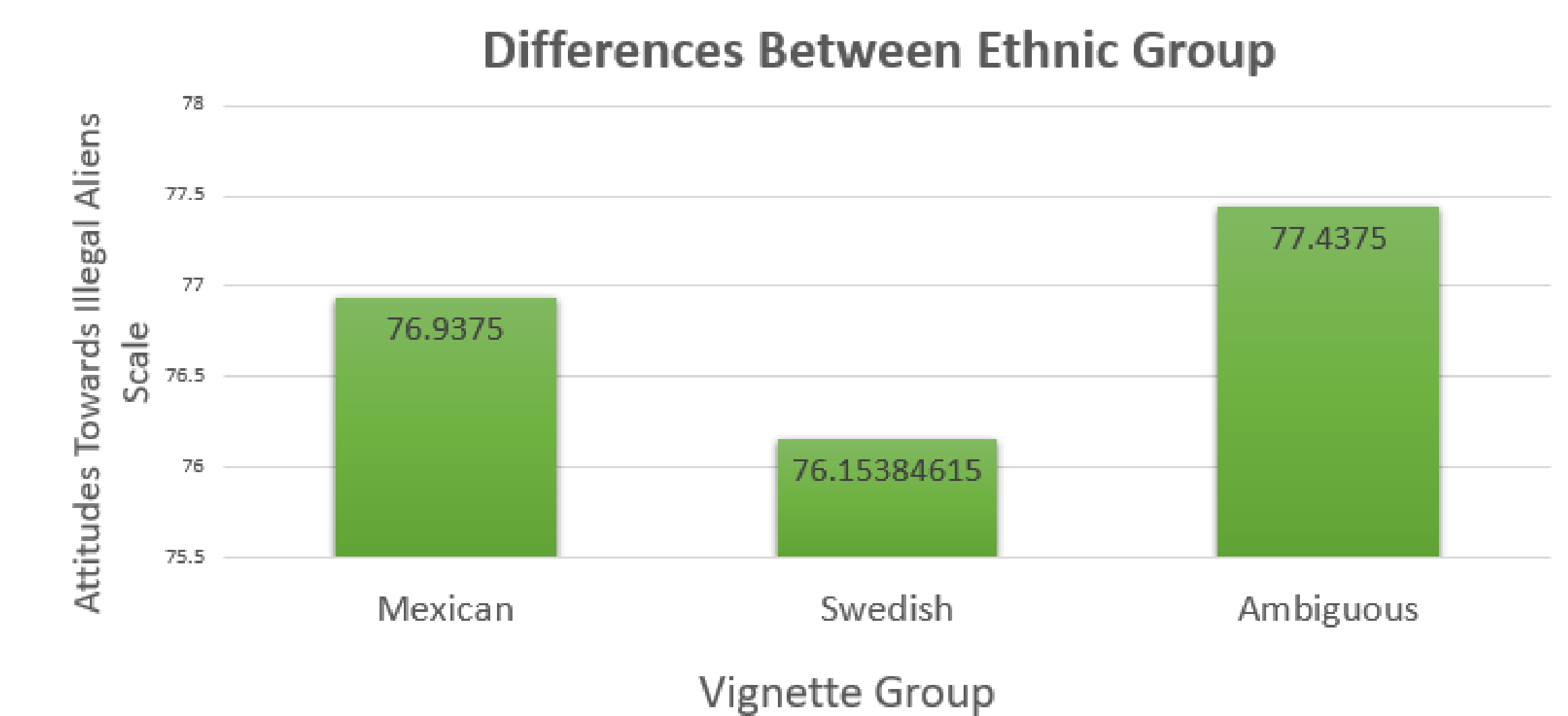
- To assess a relationship between MFQ and IA scale, participant scores were separated by moral dimension and compared with IA participant scores



- No significant correlation among the IA scale and dimensions for Harm/Care ($r = 0.1965$, $p = 0.017054$) or Purity/Sanctity ($r = -0.0049$, $p = .022996$)
- Significant correlation among the IA scale and dimensions for Fairness/Reciprocity ($r = 0.0696$, $p = 0.20467$), In-group/Loyalty ($r = -0.1414$, $p = 0.003373$), and Authority/Respect ($r = -0.23095$, $p = .006494$)

Results: Ethnicity Vignettes and IA Scale

- No statistical significance was observed between different ethnicity groups and participant scores of the IA scale



- Results suggested that attitudes did not differ ($p < .05$) between participants who read the Mexican vignette ($M = 78$, $SD = 9.363$), Swedish vignette ($M = 77.31$, $SD = 8.882$, or neutral (ambiguous) vignette ($M = 73.94$, $SD = 12.25$), [$F = (2, 51) = 0.8709$, $p = 0.426$]

Discussion

- No indication that ethnicity influences perception of immigration for surveyed population
- Significance indicative of relationship between certain MFT dimensions and attitudes towards undocumented immigration and immigration
 - Fairness/reciprocity, in-group/loyalty, and authority/respect may influence perception of immigration
 - Harm/Care or purity/sanctity may not influence perception of immigration as a moral issue
- Wording change in IA Scale
 - Perception of immigration may be influenced by wording change "Illegal immigrant/alien" to "undocumented immigrant"

References

- Fein, S., & Spencer, S. J. (1997). Prejudice as self-image maintenance: Affirming the self through derogating others. *Journal of Personality and Social Psychology*, 73, 31.
- Haidt, J., & Graham, J. (2007). When morality opposes justice: Conservatives have moral intuitions that liberals may not recognize. *Social Justice Research*, 20, 98-116.
- Isom Scott, D. (2017). The new Juan Crow? Unpacking the links between discrimination and crime for Latinxs. *Race and Justice*.
- Stephan, W. G., Ybarra, O., & Bachman, G. (1999). Prejudice towards immigrants. *Journal of Applied Social Psychology*, 29, 2221-2237