

2012

# Development and Characterization of Experimental Autoimmune Cystitis (EAC)

Kenan Izgi  
*Cleveland State University*

Follow this and additional works at: <https://engagedscholarship.csuohio.edu/etdarchive>

 Part of the [Chemistry Commons](#)

**How does access to this work benefit you? Let us know!**

---

## Recommended Citation

Izgi, Kenan, "Development and Characterization of Experimental Autoimmune Cystitis (EAC)" (2012). *ETD Archive*. 143.  
<https://engagedscholarship.csuohio.edu/etdarchive/143>

This Dissertation is brought to you for free and open access by EngagedScholarship@CSU. It has been accepted for inclusion in ETD Archive by an authorized administrator of EngagedScholarship@CSU. For more information, please contact [library.es@csuohio.edu](mailto:library.es@csuohio.edu).

**DEVELOPMENT AND CHARACTERIZATION OF  
EXPERIMENTAL AUTOIMMUNE CYSTITIS (EAC)**

**KENAN IZGI**

**DIPLOMA IN DOCTOR OF MEDICINE**

Cerrahpasa School of Medicine

Istanbul University

July 2007

Submitted in partial fulfillment of requirements for the degree

**DOCTOR OF PHILOSOPHY**

**IN CLINICAL/BIOANALYTICAL CHEMISTRY**

at the

**CLEVELAND STATE UNIVERSITY**

MAY 2012

©Copyright by Kenan IZGI

2012

This dissertation has been approved for the  
Department of CHEMISTRY  
and the College of Graduate Studies by

---

Dissertation Committee Chairperson, Firouz Daneshgari, M.D., Professor

---

Department/Date

---

Yan XU, Ph.D., Professor

---

Department/Date

---

Vincent K. Tuohy, Ph.D., Professor

---

Department/Date

---

Xiaoxia Li, Ph.D., Professor

---

Department/Date

---

Aimin Zhou, Ph.D., Professor

---

Department/Date

---

Cengiz Z. Altuntas, Ph.D.

---

Department/Date

## **DEDICATION**

To My Mother, Ayşe izgi, My Father, Abidin izgi, my Brothers and my first Teacher

Tulay Dolgun

# **DEVELOPMENT AND CHARACTERIZATION OF EXPERIMENTAL AUTOIMMUNE CYSTITIS (EAC)**

**KENAN IZGI**

## **ABSTRACT**

Interstitial Cystitis/Painful Bladder Syndrome(IC/PBS) is a chronic inflammation of the urinary bladder, consisting of irritative voiding symptoms; frequent and urgent urination and pain referred to the pelvic region or the bladder upon filling, lack of other pathology. The pathophysiology of interstitial cystitis (IC) is enigmatic. The impaired urothelium of bladder and autoimmunity might lead the underlying pathology. One of the shortcomings in IC/PBS research has been the lack of an appropriate animal model.

In the current study, we show that the bladder specific Uroplakin 3A (UPK3A)-derived immunogenic UPK3A 65-84 peptide is capable of targeting experimental autoimmune cystitis (EAC) in BALB/c mice. We determined an immunogenic peptide from the known sequence of UPK3A based on having the binding motif for IA<sup>d</sup> MHC class II molecules expressed in BALB/c mice. The highly antigen-specific proliferative response to UPK3A 65-84 was determined by proliferation assays. Active immunization with the UPK3A 65-84 peptide resulted in increased micturition frequency and decreased urine output per micturition by FVC along with the increased pelvic pain response to von Frey Filaments, and decrease intercontractile intervals, bladder compliance and bladder capacity in CMG after 5 weeks of immunization compared to control group.

The recall responses of LNC to UPK3A 65-84 showed selectively activated CD4<sup>+</sup> T-cells with a proinflammatory Th1-like phenotype. Immunocytochemical analysis

showed that immunization with UPK3A 65-84 peptide resulted in T-cell infiltration of the bladder. The ratio of bladder weight to body weight was increased in EAC mice simply showing bladder inflammation. The elevated gene expression levels of TNF- $\alpha$ , IFN- $\gamma$ , IL-17A, and IL-1 $\beta$  were confined to the bladder but not in other organs. T-cell induction of EAC was identified by showing significantly increased micturition frequency and decreased output per micturition by FVC along with the increased pelvic pain response to von Frey monofilament stimulus after adoptive transfer of peptide-activated CD4<sup>+</sup> T-cells into naïve BALB/c hosts.

Our study provides the creation of an advanced and more specific EAC model manifesting all three major phenotypes of IC/PBS by inoculation of mice with, and eliciting an immune response to, tissue specific peptide derived from the Uroplakin of the bladder urothelium. These findings qualify this animal model as a contemporary model for future exploration of pathogenesis and therapeutic intervention of IC/PBS.

# TABLE OF CONTENTS

ABSTRACT.....	v
TABLE OF CONTENTS.....	vii
LIST OF FIGURES .....	xi
LIST OF TABLES .....	xiii
LIST OF ABBREVIATIONS.....	xiv
CHAPTERS	
<b>I. BACKGROUND AND INTRODUCTION.....</b>	<b>1</b>
1.1. AUTOIMMUNITY .....	1
1.1.1. Immune System .....	1
1.1.2. General Features of Autoimmunity .....	2
1.1.3. Organ Specific Autoimmunity.....	3
1.1.4. Experimental Organ-Specific Autoimmunity.....	4
1.1.5. T Cells and Autoimmunity.....	5
1.1.6. Major Histocompatibility Complex (MHC) .....	6
1.1.7. T Cells.....	7
1.1.8. T helper cells.....	8
1.1.9. Trimolecular Complex .....	10
1.2. INTERSTITIAL CYSTITIS/PAINFUL BLADDER SYNDROME(IC/PBS) ..	11
1.2.1. Etiology of IC/PBS .....	12
1.2.2. Pathological Changes in IC/PBS .....	13
1.3. IC/PBS AND AUTOIMMUNITY.....	13



1.3.1.	HLA-Linkage in IC/PBS.....	14
1.3.2.	Immune Disorders Associated with IC/PBS.....	14
1.4.	BLADDER AUTOIMMUNITY .....	15
1.4.1.	Autoantibodies in IC/PBS.....	15
1.4.2.	Cellular Immune Abnormalities in IC/PBS .....	16
1.5.	ANIMAL MODELS FOR IC/PBS .....	17
1.5.1.	EAC Induced by Immunization with Bladder Homogenate .....	17
1.5.2.	Naturally Occurring Cat Model for IC/PBS .....	18
1.5.3.	Intravesical Irritant Instillation Models .....	19
1.5.4.	EAC Induced by Immunization with Recombinant mUPK2 Protein .....	19
1.5.5.	URO-OVA Mice.....	20
1.5.6.	Immune Stimulant Induced Cystitis Models.....	20
1.5.7.	Noxious Environmental Stimulus Induced Cystitis Animal Models .....	21
1.6.	UROEPITHELIUM .....	21
1.7.	UROPLAKINS.....	22
1.7.1.	Function of Uroplakins .....	23
1.7.2.	UPIIIa and Plaques .....	23
1.8.	BIOMARKER FOR IC/PBS.....	24
<b>II.</b>	<b>METHODS.....</b>	<b>25</b>
2.1.	Peptide .....	25
2.2.	Mice and immunization .....	27
2.3.	Weighting Bladder Tissues.....	27
2.4.	Cell culture and Proliferation Assays .....	27

2.5.	Cytokine Analysis.....	29
2.6.	Total Antibody Titer.....	30
2.7.	Isotype-Specific Antibody Titers.....	30
2.8.	Real Time-PCR.....	31
2.9.	Histologic analysis.....	32
2.10.	Immunocytochemistry .....	32
2.11.	Urinary Frequency-Volume Assessment (FVC).....	33
2.12.	Pain Assessment.....	34
2.13.	Adoptive Transfer of EAC.....	34
2.14.	Cystometrogram (CMG).....	35
2.15.	Statistical analysis.....	36
<b>III.</b>	<b>RESULTS.....</b>	<b>37</b>
3.1.	Immunogenic Peptides Selection and Prediction Based on MHC motifs .....	37
3.2.	Immunogenic UPK3A 65-84 Peptide Elicited Proliferative Response in BALB/c mice.....	39
3.3.	Th1-like Proinflammatory Phenotype was revealed to UPK3A 65-84 in immunizedmice.....	41
3.4.	UPK3A 65-84 Activates CD4+ Proinflammatory Th1-Like T Cells in an IAd- restricted Manner.....	42
3.5.	High Titer Antibody Response to UPK3A 65-84 along with Type 1 antibody isotype was showed in Immunized mice. ....	42
3.6.	Active Induction of EAC in BALB/c mice Immunized with UPK3A 65-84.	46

3.7. Bladder Dysfunction, IC/PBS phenotypical characterization following active immunization with UPK3A 65-84.....	49
3.8. Immunization with UPK3A 65-84 Increases Bladder Weights.....	52
3.9. Cystometrogram Analysis of Bladder Dysfunction in EAC Mice .....	53
3.10. IC/PBS phenotype occurred following adoptive transfer of CD4+ T-cells from UPK3A 65-84 Primed Mice. ....	57
3.11. Pelvic Pain Response Following Adoptive Transfer of CD4+ T-cells from UPK3A 65-84 Primed Mice. ....	62
<b>IV. DISCUSSION.....</b>	<b>68</b>
<b>REFERENCES.....</b>	<b>76</b>

## LIST OF FIGURES

Figure 1. UPK3A 65-84 is Higly Immunogenic in BALB/c mice. ....	40
Figure 2. UPK3A 65-84 Induces a Th1-like Proinflammatory Response.. ....	41
Figure 3. CD4+ T cell Reactivity to UPK3A 65-84.. ....	43
Figure 4. High Antibody Response to UPK3A 65-84. ....	44
Figure 5. Type 1 Antibody Isotype Response to UPK3A 65-84. ....	45
Figure 6. H&E and Immunocytochemical Staining of Bladder Tissues.....	47
Figure 7. Bladder Specific Inflammatory Response. ....	48
Figure 8. Bladder Dysfunction in Mice Immunized with UPK3A 65-84.....	50
Figure 9. Increased Pelvic Pain Response in EAC.. ....	51
Figure 10. Immunization with UPK3A 65-84 Increases Bladder Weights.. ....	52
Figure 11. Representative Cystometrogram for EAC and Control Group.....	54
Figure 12. Representative Cystometrogram of EAC vs Control.. ....	55
Figure 13. Adoptive Transfer of enriched CD4+T cells developed EAC.....	58
Figure 14. Adoptive Transfer of CD8+T cells, no Phenotypical Changes in FVC.. ....	59
Figure 15. Sera Transfer from Immunized Mice to Naive Host.....	60
Figure 16. Passive Transfer of B-cells from Mice Immunized with UPK3A 65-84 to Naive Recipient.....	61
Figure 17. Adoptive Transfer of enriched CD4+ T cells from UPK3A 65-84 immunized mice revealed increase pelvic pain response. ....	63
Figure 18. There is no pelvic pain response after adoptive transfer of CD8+ T cells. ....	64
Figure 19. There is no pelvic pain response after sera transfer from mice immunized with UPK3A 65-84. ....	65

Figure 20. Passive Transfer of B-cells from mice immunized with UPK3A 65-84 into  
naive host did not developed pelvic pain response..... 66

## LIST OF TABLES

Table 1.Uroplakin derived peptide sequences and MHC II binding motifs for SWXJ mice strain and BALB/c mice strain.....	26
Table 2.Mostly used immunogenic peptides with -KXXS- MHC motif sequences.....	38
Table 3. Comparisons of Cystometry Results.....	56

## LIST OF ABBREVIATIONS

ANA	Antinuclear Antibodies
ALPS	Autoimmune Lymphoproliferative Syndrome
APC	Antigen Presenting Cell
APECED	Autoimmune Poliendocrinopathy Candidiasis
Ectodermal Dystrophy	
APF	Antiproliferative Factor
AUM	Asymmetric Unit Membrane
BSA	Bovine Serum Albumin
CAMHC	Cardiac Alpha Myosin Heavy Chain
CD	Cluster of Differentiation
CFA	Complete Freund's Adjuvant
CMG	Cystometrogram
cpm	counts per minute
CYP	Cyclophosphamide
DM	Diabetes Mellitus
dsDNA	Double Stranded DNA
EAC	Experimental Autoimmune Cystitis
EAE	Experimental Autoimmune Encephalomyelitis
EAMC	Experimental Autoimmune Myocarditis
EAO	Experimental Autoimmune Oophoritis
ELISA	Enzyme Linked Immunosorbent Assay
EGF	Epidermal Growth Factor
FVC	Frequency Voiding Charts
GATA 3	GATA Binding Protein 3
GAG	Glycosaminoglycan
GP-51	Glycoprotein 51
GVHD	Graft-Versus-Host-Disease
HB-EGF	Heparin-Binding EGF-like Growth Factor
H2	Histocompatibility Complex 2
H&E	Hematoxylin and Eosin
HIV	Human Immunodeficiency Virus
HLA	Human Leukocyte Antigen
HRP	Horseshoe Peroxidase
IA	Mouse MHC Class II Molecule
ICAM	Intercellular Adhesion Molecule
IC	Interstitial Cystitis
IC/PBS	Interstitial Cystitis/Painful Bladder Syndrome
ICS	International Continence Society
IFN- $\gamma$	Interferon-Gamma
IGFBP3	Insulin-like Growth Factor Binding Protein 3
IL	Interleukin
i.v.	Intravenous
i.p.	Intraperitoneal

LFA	Lymphocyte Function Associated Antigen
LNC	Lymph Node Cells
LPS	Lipopolysaccharide
M3R	M3 Muscarinic receptor
MHC	Major Histocompatibility Complex
MOBP	Myelin Oligodendrocyte Glycoprotein
MOG	Myelin Oligodendrocyte Glycoprotein
MS	Multiple Sclerosis
NGF	Nerve Growth Factor
NIDDK	National Institute of Diabetes and Digestive and
Kidney Diseases	
NOD	Non-Obese Diabetic
OVA	Ovalbumin
p-ANCA	Perinuclear Antineutrophil Cytoplasmic Antibodies
PLP	Myelin Proteolipid Protein
RA	Rheumatoid Arthritis
SS	Sjögren Syndrome
Stat 5	Signal Transducer and Activator of Transcription 5
Stat 6	Signal Transducer and Activator of Transcription 6
SFB	Segmental Filamentous Bacteria
Th0	T helper Cell Type 0
Th1	T helper Cell Type 1
Th2	T helper Cell Type 2
Th3	T helper Cell Type 3
TH9	T helper Cell Type 9
Th17	T helper Cell Type 17
TGF- $\beta$	Tumor Growth Factor Beta
Foxp3	Forkhead Box P3
Treg	Regulatory T cells
T-bet	T box expressed in T cells
THP	Tam Horsfall Protein
TNF	Tumor Necrosis Factor
TCR	T Cell Receptor
TLR	Toll-Like Receptor
UPK	Uroplakin
UPK3A	Uroplakin 3A
UP	Uroplakin



# **CHAPTER I**

## **BACKGROUND AND INTRODUCTION**

### **1.1. AUTOIMMUNITY**

#### **1.1.1. Immune System**

The immune system is competent to recognize and horse effectively specific immune response to the vast variety of foreign antigens, pathogens or cancer cells without any damage to host itself. This amazing diversity of immune system is achieved by somatic recombination and rearrangement of gene segments coding for B-cells, antibody molecules, and T-cell receptors (TCR) (French, Laskov et al. 1989; Livak, Burtrum et al. 2000; Li, Woo et al. 2004). The CD4+ CD8+ double positive (DP) cells go into apoptosis if they do not recognize any antigens, and their TCRs bind high affinity to self-peptide/MHC complex (Kappler, Roehm et al. 1987; McDuffie, Roehm et al. 1987). On the other hand, if the DP cells are acquainted with self-antigens or MHC with low affinity, they enter into positive selection and alter to cytotoxic-T cells and T-helper cells (Kappler, Roehm et al. 1987; McDuffie, Roehm et al. 1987). The immature T cells

that recognize the self-antigens binding the Major Histocompatibility Complex(MHC) molecules develop maturation (Robey and Fowlkes 1994).

These generated T-cells express very diverse set of TCRs. The positive selection based on the MHCs narrows the T cells population in the periphery (Sospedra, Ferrer-Francesch et al. 1998). The 3% of the differentiated T cells continue to exist after positive and negative selection (Shortman, Egerton et al. 1990). The mature T cells travel to spleen and lymphoid nodes where they are ready to act in response to foreign antigens. One TCR cross-react with various peptides and this process is required to sustain immune system with adequate flexibility to get used to an incessantly varying antigenic milieu (Garcia and Teyton 1998; Mason 1998). A few T cells with the intermediate affinity to self-antigen flee from the thymic negative selection and are freed in to the periphery(Jiang and Chess 2006).These escaped self-reactive T cells are competent for self-peptide originated proliferative response and can transform into pathogenic effector cells inducing autoimmunity(Mason and Powrie 1998; Kuchroo, Anderson et al. 2002; Jiang and Chess 2006).

### **1.1.2. General Features of Autoimmunity**

Autoimmunity is the outcome of impairment and breakdown of self –tolerance mechanisms due to cause of genetic factors, environmental factors, bystander effect and cross reactivity of infectious agents, Toll-Like Receptor (TLR) cross-linking (Romagnani 2006). The autoimmune disease leads broad changes of immune system along with changes in cytokine profile and autoantibodies causing tissue injure and impaired immune response(Winer and Winer 2012). Autoimmune response attacks the own self-

antigens of body and leads continuous auto-reactivity to targeted tissues or organ causing chronic inflammatory damage(Brower 2004). It is eminent that T-cells play a major role in autoimmune diseases development and initiation via antigen-specific immune response (O'Garra, Steinman et al. 1997) as seen in multiple sclerosis(Swanborg 1995), type 1 diabetes mellitus (Delovitch and Singh 1997), rheumatoid arthritis((Anthony and Haqqi 1999; Fitzpatrick, Green et al. 2011).

Genetic mutations can cause autoimmunity. The autoimmune poliendocrinopathy, candidiasis, ectodermal dystrophy (APECED) is the result of genetic mutation of AIRE gene in central tolerance mechanism (Peterson and Peltonen 2005), and autoimmune lymphoproliferative syndrome (ALPS) is the outcome of mutations in Fas/FasL-mediated apoptosis (Worth, Thrasher et al. 2006).

It was shown that ischemic injury and trauma could elicit autoimmune condition as seen in post-traumatic uveitis (Rahi, Morgan et al. 1978) and orchitis after vasectomy (Goldacre, Abisgold et al. 2006). Moreover, the infectious agent can cause autoimmunity through eliciting sequestered auto-antigen (Miller, Vanderlugt et al. 1997) inducing the inflammatory cytokines and co-stimulatory molecules (Klinman, Yi et al. 1996; Infante-Duarte, Horton et al. 2000) and also elicit T-cells by super antigens(Kearney, Pape et al. 1994).

### **1.1.3. Organ Specific Autoimmunity**

While the systemic autoimmune diseases affect multiple organs, the organ-specific autoimmune diseases mainly target one specific organ or tissue. The immunological reactivity to self-antigen mediated tissue or organ specific autoimmune

disorders have shown in several diseases. Autoimmune hepatitis(T-cell-mediated attack on liver antigens), Hashimoto's thyroiditis (Autoantibodies to thyroglobulin of thyroid gland), Graves' disease (Thyrotropin receptor autoantibodies, antibody to the thyroid-stimulating hormone receptor ), type 1 diabetes(autoimmune response to pancreatic islets beta cells) , Addison's disease (autoimmunity against adrenal glands),rheumatoid arthritis(autoimmune attack to synovial tissues of joints), multiple sclerosis(autoimmune attack to central nervous system) and myasthenia gravis(antibody to the acetylcholine receptor) are some of the more common organ-specific autoimmune conditions(Golub 1991; Gossard and Lindor 2012) (Chazenbalk, Portolano et al. 1993; Swanborg 1995; King and Sarvetnick 1997; Anthony and Haqqi 1999) (Martin Martorell, Roep et al. 2002; Wilson 2011) (Ratliff, Klutke et al. 1995). Sjögren's syndrome (autoimmune attacks the exocrine glands) and systemic lupus erythematosus (SLE) (autoantibodies Double-stranded DNA (dsDNA) are well-known examples of systemic autoimmune diseases.

#### **1.1.4. Experimental Organ-Specific Autoimmunity**

The conception of the employing of experimental autoimmunity through the stimulation of T-cell mediated targeted self-antigens has utilized to the establishment of practical models of autoimmune conditions such as autoimmune encephalomyelitis (EAE)(Tuohy, Lu et al. 1989; Yu, Johnson et al. 1996), autoimmune myocarditis (Janewit, Yu et al. 2002), autoimmune oophoritis(Altuntas, Johnson et al. 2006),autoimmune hearing loss(Solares, Edling et al. 2004) and experimental autoimmune cystitis (EAC) that imitates the phenotype of human interstitial cystitis(IC)(Lin, Liu et al. 2008;

Altuntas, Daneshgari et al. 2011) . For development of organ specific autoimmunity, the lyophilized animal whole organ tissue homogenate, proteins or peptides of targeted organs were used. The animals are immunized with immunogenic antigen in a emulsion of complete Freund's adjuvant (CFA) which augments the inflammatory response to the selected immunogenic protein or peptide. Myelin proteolipid protein (PLP), myelin-associated oligodendrocytic basic protein (MOBP), myelin oligodendrocyte glycoprotein (MOG) are used for induction of EAE in animal that mimics human clinical aspects of multiple sclerosis (Tuohy, Lu et al. 1989; Yu, Johnson et al. 1996; Kaushansky, Zilkha-Falb et al. 2007). The cardiac alpha-myosin heavy chain (CAMHC) is used for induction of experimental autoimmune myocarditis (Jane-wit, Yu et al. 2002), inner ear specific proteins cochlin (Coch) and  $\beta$ -tectorin are used for targeting experimental autoimmune hearing loss (EAHL) in mice(Solares, Edling et al. 2004), and bladder specific uroplakin 2 protein is used for induction of experimental autoimmune cystitis(EAC)(Altuntas, Daneshgari et al. 2011).

#### **1.1.5. T Cells and Autoimmunity**

The self-tolerance is preserved through the elimination of immature T cells that recognize self -antigens in the thymus by negative selection (Kappler, Roehm et al. 1987), and T regulatory cells(Treg)(Sakaguchi, Sakaguchi et al. 1995), deletion by apoptosis, T cell anergy (Jenkins and Schwartz 2009) in the periphery (Walker and Abbas 2002; Saeki and Iwasa 2011). Self-reactive T cells recognize and attack to own tissues or organs that lead autoimmunity in the periphery (Seddon and Mason 1999; Jordan, Boesteanu et al. 2001). Genetic mutations or deletions can also breakdown the tolerance

and contribute the development of autoimmunity (Abbas, Lohr et al. 2004). Some auto-reactive T cells flee from the thymic negative selection due to absence of self-antigen manifestation in the thymus (Ohashi 2003). The splice variants of self-proteins which do not have the proper T-cell epitope avoid the thymic deletion (Klein, Klugmann et al. 2000). Moreover, it was suggested that autoimmunity could be induced from mutations in self-proteins making them immunogenic (Houghton and Guevara-Patino 2004) (Engelhorn, Guevara-Patino et al. 2006) as seen in mutated pigment-related proteins associated to melanoma showed autoimmune T-cell response to this self-antigen(Engelhorn, Guevara-Patino et al. 2006; Guevara-Patino, Engelhorn et al. 2006).

#### **1.1.6. Major Histocompatibility Complex (MHC)**

Whereas nearly all nucleated cells comprise MHC Class I molecules, MHC class II molecules are located outer surface of antigen presenting cells (APCs); dendritic cells, macrophages, B cells and a few other types. T cell receptors (TCR) are antigen-specific receptors that define the specificity T cells. T-cells recognize the peptides presented through the MHC molecule on the surface of APCs (Babbitt, Allen et al. 1985; Townsend, Rothbard et al. 1986). Major histocompatibility complex (MHC) class I molecules present the peptides from the proteolytic degradation of inside antigens including viruses and intracellular bacteria, introduce antigens to antigen-specific CD8+ cytotoxic T lymphocytes, whereas MHC class II molecules that are presented on the surface of antigen presenting cells inrtoduce the antigenic peptides from extracellular and soluble antigens to the CD4+ T cells, leading activation, proliferation and differentiation of T cells subsets (McHeyzer-Williams, Altman et al. 1996; Zhu, Cote-Sierra et al. 2003).

The strong association of MHC class II molecule alleles with diseases lead them to become the most important genetic risk factors for autoimmune diseases (Jones, Fugger et al. 2006) such as human leukocyte antigen (HLA) DR4 in insulin depended diabetes and HLA DR2 haplotype linkage in Multiple Sclerosis(Kent, Chen et al. 2005; Sospedra and Martin 2005). The link of HLA-B27 with ankylosing spondylitis is another example of genetically mediated autoimmune disease (Thomas and Brown 2010).

### **1.1.7. T Cells**

T cells are white blood cells well-known as lymphocytes, they mediate cellular immunity. T cells are differentiated from other cells by T cell receptor (TCR) on their cell surface. CD4 T cells have two different subtypes; Th1 and Th2. The differentiation of Th1 and Th2 response is based on cytokine expressions. While Th1 response generates IL-2 and Interferon gamma (IFN- $\gamma$ ), Th2 response secrete IL-4, IL-5, IL-6, IL-9, IL-10, and IL-13(Romagnani 1995). CD8 T cells also have different subsets corresponding to different cytokine expressions; Tc1 subsets produce IFN- $\gamma$  but not IL-4 or IL-5, Tc0 produce IL-4, IFN- $\gamma$  and other cytokines, Tc2 subsets produce IL-4 but not IFN- $\gamma$  (Croft 1994; Sad, Marcotte et al. 1995; MacAry, Holmes et al. 1998; Vukmanovic-Stejic, Vyas et al. 2000). IL-12 stimulate Tc1 subsets CD8 T cell proliferation, while IL-4 inhibits proliferation of clones (Vukmanovic-Stejic, Vyas et al. 2000). IL-4 producing CD8 T cell clones were shown in some diseases such as HIV(Maggi, Giudizi et al. 1994),cutaneous leishmaniasis (Uyemura, Pirmez et al. 1993), lepromatous leprosy(Salgame, Abrams et al. 1991), periodontitis(Wassenaar, Reinhardus et al. 1996), and in asthma(Till, Li et al. 1995).

### **1.1.8. T helper cells**

Naive T-cells is called Th0 cells which facilitate moderate effect, relying on the ratio of Th1/Th2 cytokines. Th3 is another T cell subset that produces TGF- $\beta$ (Chen, Kuchroo et al. 1994) named regulatory T cells(Treg) having Foxp3(Fontenot, Gavin et al. 2003; Carrier, Yuan et al. 2007).TGF- $\beta$  mediates the differentiation of Foxp3 negative naive CD4 T cells into Foxp3 positive CD4 T cells called Treg cells(Chen, Jin et al. 2003).

Th1 cells play role in the pathogenesis of Hashimoto's disease, type 1 DM, autoimmune gastritis and MS (Romagnani 1997; Romagnani, Parronchi et al. 1997). IFN- $\gamma$  secreted by Th1 cells is vital to macrophage activation in terms of elevating the microbicidal response (Suzuki and Remington 1988). IL-2 production by Th1 cells is important for CD4 T cell memory (Darrah, Patel et al. 2007). IFN- $\gamma$  induces Th1 subset differentiation (Lighvani, Frucht et al. 2001) through the stimulation of Stat-1 and T-bet (Szabo, Kim et al. 2000). After the T cell activation through the TCR interaction with APCs, bulk amount of IL-12 is expressed by APCs. Stat4 augments the Th1 response through IL-12 mediated phosphorylation transduction leading T-bet activation of IFN- $\gamma$  (Kaplan, Sun et al. 1996; Thierfelder, van Deursen et al. 1996).

Th2 subset differentiation is promoted by IL-4. Stat 6 is necessary for inducing response to IL-4 and Th2 differentiation (Kaplan, Sun et al. 1996). Additionally, Stat 6 activation leads the expression of GATA-3 which is Th2 chief regulatory gene (Jankovic, Kullberg et al. 2000; Zhu, Guo et al. 2001). GATA-3 is important for the production of IL-5 and IL-13(Zhu, Min et al. 2004; Zhu, Yamane et al. 2006).The IL-2- induced stat5 activation and IL-4 mediated GATA-3 stimulation through stat6 leading complete Th2



differentiation(Yamane, Zhu et al. 2005; Zhu, Yamane et al. 2006). Th1 cells are pivotal for immune defense to pathogens inside the cells, whereas Th2 cells are for immune defense to extracellular pathogens such as helminths (Mosmann and Coffman 1989; Paul and Seder 1994).The balance between Th1 and Th2 determines the severity of autoimmune disease; While Th1 cells are considered as developer pathogenic effect, Th2 cells considered as having inhibitory effects (Nicholson and Kuchroo 1996).

The Th17 cells have been associated with different diseases. Th17 cells are promoted from naive T cells through inducing TGF- $\beta$  and IL-6 (Bettelli, Carrier et al. 2006; Veldhoen, Hocking et al. 2006). The function of IL-17 was documented in human autoimmune diseases such as multiple sclerosis (Matusevicius, Kivisakk et al. 1999), rheumatoid arthritis(Aarvak, Chabaud et al. 1999), psoriasis (Teunissen, Koomen et al. 1998), tissue inflammation (Steinman 2007). Th17 cells generate IL-17A, IL-17F, IL-21, IL-22, and have been shown to transfer EAE to naïve recipient (Langrish, Chen et al. 2005) and also Th17 cells induce EAE (O'Connor, Prendergast et al. 2008). It was shown that IL-23 is the major contributor in induction of EAE along with IL-17(Harrington, Hatton et al. 2005; Park, Li et al. 2005) and promotes naïve CD4+ T cells into Th17 lineage by inhibiting T-bet and Foxp3 (Mus, Cornelissen et al. 2010).

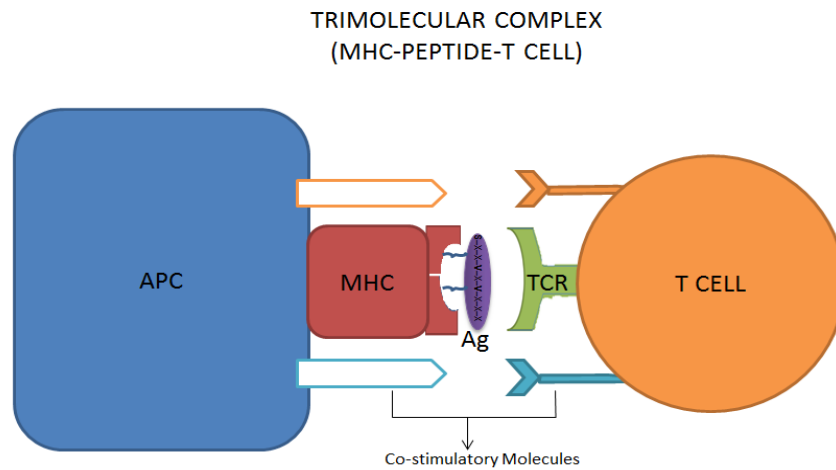
CD4 Th1 and Th17 T cells are primary mediators of autoimmune diabetes (Haskins 2005) (Wagner, Newell et al. 1999; Emamaullee, Davis et al. 2009). It was shown that the levels of Th17-associated proinflammatory cytokines such as IL-1 $\beta$ , IL-6 and IL-23, were increased in NOD mice, insulin-dependent diabetes (Type 1DM) and IFN- $\gamma$  induced by IL-12 application stop diabetes development via blocking the IL-17 expression(Zhang, Huang et al. 2012).Th17 cells have been shown to be more effective

than Th1 cells in disease progress (Langrish, Chen et al. 2005). Moreover, the changed balance between Th1 and Th17 cells in circulation was considered as a sign showing the impairment in murine acute Graft-Versus-Host Disease (GVHD) (Pan, Zeng et al. 2012).

Additionally another subset of T cells has been defined called Th9 cell which are formed after induction with TGF- $\beta$  and IL-4 and produce IL-9 and IL-10 (Dardalhon, Awasthi et al. 2008; Veldhoen, Uyttenhove et al. 2008; Lin, Chen et al. 2012). It was shown that Th9 cells can mediate tissue inflammation in a colitis model (Dardalhon, Awasthi et al. 2008) and in EAE upon adoptive transfer with Th9 cells from myelin oligodendrocyte glycoprotein (MOG)-specific TCR transgenic T cells (Jager, Dardalhon et al. 2009).

### **1.1.9. Trimolecular Complex**

For the full T cell Activation APC s are required to present peptides through MHC molecules to TCR of T cells, however this interaction is weak and some co-stimulatory signals such as CD28/B7-1(CD80) and B7-2(CD86), 4-1BB/4-1BBL and adhesion structures (Sharpe and Abbas 2006) CD4/MHC-class II or CD8/MHC class I, LFA-1/ICAM-1, CD2/LFA-3 , CD40/CD40L are contributed this trimolecular complex and these interactions generate signal and fully activation of T cells along with cytokines production (Smith, Graham et al. 1994; Wingren, Parra et al. 1995; Perrin, Scott et al. 1996; Shuford, Klussman et al. 1997). Moreover, co-stimulatory signals through OX40/OX40L and CD27/CD70 enrich T cell activation in along with CD28/B7 (Croft 2003).



## 1.2. INTERSTITIAL CYSTITIS/PAINFUL BLADDER

### SYNDROME(IC/PBS)

According to The International Continence Society (ICS), the definition for IC/PBS is

"the complaint of suprapubic pain related to bladder filling, accompanied by other symptoms such as increased daytime and night-time frequency, in the absence of proven urinary infection or other obvious pathology"(Abrams, Cardozo et al. 2002).

IC is a chronic germ-free inflammation of the urinary bladder with the nonappearance of verified infection (Forrest and Vo 2001; Bogart, Berry et al. 2007), and is presented by the symptoms of frequent and urgent urination along with pain or irritation in the bladder and lower urinary tract (LUT), necessitating the adding of the new terminology painful bladder syndrome (PBS)(Toft and Nordling 2006; Hanno 2008) (Bogart, Berry et al. 2007). The prevalence of IC/PBS had been estimated as 55 per 100,000 or 45 per 100,000 by using the National Institute of Diabetes and Digestive and Kidney Diseases (NIDDK)

criteria(Curhan, Speizer et al. 1999; Clemens, Meenan et al. 2005). IC occurs mainly in female group with a ratio of 5:1 to male(Bogart, Berry et al. 2007). Based on the high sensitivity and specificity criteria it was anticipated that nearly 3.5 to 8 million women at age 18 or older suffer from bladder pain syndrome/interstitial cystitis symptoms in the United States (Berry, Elliott et al. 2011). According to the NIDDK diagnostic criteria IC/PBS occurs 17 times more in the relatives of IC/PBS patients than general population (Warren, Jackson et al. 2004).

The medical costs are predicted to surpass the \$100 million per year(Nickel 2004). The diagnostic standard criteria for IC/PBS is compose of presence Hunner's ulcer on cystoscopy with urinary symptoms of pelvic pain, urgent to urinate, frequent urination and ease of dyspareunia after voiding(Hanno, Levin et al. 1990). While the only 20% of patients present Hunner's ulcer, 80% of patients do not have ulcer in their bladder (Messing and Stamey 1978; Koziol 1994). Patients suffer considerable morbidity over the course of their lives, especially during the most productive years. Advancement in addressing this disease has been painfully slow due to a lack of understanding of the underlying pathophysiology.

### **1.2.1. Etiology of IC/PBS**

The etiopathogenesis of IC/PBS has not been explicated yet. Several different theories have been proposed on the underlying pathology of IC/PBS(Oberpenning, van Ophoven et al. 2002); defects of bladder barrier glycosaminoglycan(GAG) layer, infection induced, mast cell activation(Hofmeister, He et al. 1997; Parsons 2003; Theoharides 2004) autoimmunity, antiproliferative factor(Keay, Zhang et al. 2001),

decreased sialylation and glycosylation of Tam Horsfall Protein(THP)(Argade, Vanichsarn et al. 2009), TNF-related apoptosis-inducing ligand(TRAIL) and its receptor(Kutlu, Akkaya et al. 2010), elevated transient receptor potential subtype 1 vanilloid receptor in nerve fibers(Mukerji, Yiangou et al. 2006), neuroendocrine and neuroimmune mechanisms(Butrick 2003).

### **1.2.2. Pathological Changes in IC/PBS**

IC/PBS is chronic urinary bladder inflammation with the manifested symptoms of pelvic pain, frequency, urgency, nocturia, irritative micturition, dyspareunia and sterile urine (Parsons 1996; Warren, Langenberg et al. 2008). The cystoscopic findings of IC patients compose of glomerulations which are caused by mechanical and congestive ruptures of capillaries during hydrodistention (Johansson and Fall 1990; Tamaki, Saito et al. 2004)(MASAHIRO TAMAKI, 2004; Johansson SL, 1990) and Hunner's ulcers.

### **1.3. IC/PBS AND AUTOIMMUNITY**

IC/PBS exhibits some characteristic features that can be suggested as the signs for autoimmune chronic disorder (van de Merwe 2007). These features are; no existence microorganism in the bladder of IC patients, the higher incidence of disease in the people with certain HLA type(Christmas and Bottazzo 1992), more frequent in women than in men and existence of autoantibodies in serum of IC patients(Alarcon-Segovia, Abud-Mendoza et al. 1984; Ochs 1997; Peeker, Atanasiu et al. 2003),the occurrence of another autoimmune disease in patients and other family members(Warren, Jackson et al. 2004), improvement with immunologically affective drugs (Sairanen, Tammela et al. 2005;

Evans, Moldwin et al. 2011) and immune suppressive agents(Liu, Deyoung et al. 2008). Anti-NGF monoclonal antibody (Tanezumab) is used for treatment of IC/PBS symptoms showing improvement in pain, urgency and frequency (Evans, Moldwin et al. 2011).Moreover the induction of disease in naïve hosts after adoptive transfer of lymphocytes or antibodies(Bullock, Becich et al. 1992), and also observing satisfactory effects after the treatment of a drug that is effecting the immune response(Kim, Liu et al. 2011).

### **1.3.1. HLA-Linkage in IC/PBS**

The upregulation of HLA-DR and antinuclear antibodies (ANA) were observed in IC patients samples as the sign of immune response (Jokinen, Oravisto et al. 1973; Christmas and Bottazzo 1992; Liebert, Wedemeyer et al. 1993). In another study the 36% of patients with IC showed increased antinuclear antibody (Ochs, Stein et al. 1994). IC also has been connected with HLA DR6 allele of MHC II as a relative risk factor (Christmas and Bottazzo 1992; Christmas 1994).

### **1.3.2. Immune Disorders Associated with IC/PBS**

The occurrences of IC/PBS with different diseases give some ideas about the cause of etiology and potential treatment strategy. The high incidence of IC association with the nonspecific autoimmune disorders including systemic lupus erythematosus (SLE), rheumatoid arthritis (RA), thyroiditis, and Sjögren syndrome (SS) has been shown(Oravisto 1980; Fall 1985; Golstein, Manto et al. 1994; Van De Merwe and

Arendsen 2000; Peeker, Atanasiu et al. 2003; van de Merwe, Yamada et al. 2003). Moreover, In a case report the chronic IC was revealed through the superimposing course from rheumatoid arthritis to lupus (Golstein, Manto et al. 1994). Autoantibodies to SS-A/Ro and SS-B/La were revealed in approximately 13% of IC patients (van de Merwe, Yamada et al. 2003).The antibodies to M3R of bladder in IC patients with Sjögren Syndrome were suggested leading initial symptoms and later local inflammation (Van De Merwe and Arendsen 2000). IC patients show different diseases concomitantly such that allergic diseases, sensitive skin diseases irritable, bowel disease, migraine headaches, fibromyalgia, vulvodynia and pelvic floor dysfunction were higher in IC/PBS patients than in normal population (Alagiri, Chottiner et al. 1997; Moldwin 2002; Yamada 2003; Shorter, Kushner et al. 2006).

## **1.4. BLADDER AUTOIMMUNITY**

### **1.4.1. Autoantibodies in IC/PBS**

The accumulation immunoglobulin (IgG, IgA, and IgM) and complement to elastic structures of bladder of IC were revealed (Helin, Mattila et al. 1987; Gillespie, Said et al. 1990). It was reported that nearly 50% of the IC patient exhibit autoantibodies (Ochs 1997). The high incidence of IC in women with waxing and waning symptoms along occurrence of infiltrating lymphocytes, antinuclear antibodies, anti-tissue antibodies, and anti-Tamm-Horsfall antibodies are considered as autoimmune sign in IC pathogenesis (Mattila and Linder 1984; Said, Van de Velde et al. 1989; Gillespie, Said et al. 1990; Neal, Dilworth et al. 1991).

#### **1.4.2. Cellular Immune Abnormalities in IC/PBS**

In most of the IC patients' bladder biopsies the main pathological alterations were the increased vascularity, lymphocytes infiltration, and mast cells accumulation (Elbadawi 1997). The elevation of T helper cells, B cell nodules, and plasma cells deposition in bladder biopsies of IC patients was showed indicating a cell mediated immune reaction (Harrington, Fall et al. 1990; MacDermott, Miller et al. 1991; Elbadawi 1997). In Interstitial cystitis patients' bladder biopsies the IgG accumulation, lymphocytes, mast cells and plasma cells infiltration were observed (Boye, Morse et al. 1979; Rosin, Griffiths et al. 1979). In IC patients, the accumulation of CD8+ T cells in urothelium and CD4+ T cells in lamina propria were demonstrated in bladder biopsies (Harrington, Fall et al. 1990; Christmas 1994). In some IC patients the massive accumulation of plasma cells in bladder mucosa and increased perinuclear antineutrophil cytoplasmic antibodies (p-ANCA) was observed (Thaxton, Eggener et al. 2004; Pacella, Varca et al. 2010).

The role of autoreactive CD4+ T cells in induction of bladder autoimmune inflammation was shown in transgenic a URO-OVA mouse which is a model self-antigen producing ovalbumin in the bladder surface epithelium, derived by UPK2 gene promoter(Liu, Deyoung et al. 2008; Liu, Chen et al. 2011). The preactivated OVA-specific CD4+ T cells induce autoimmune inflammation in the bladder of this mice and CD8+ T cell-lacking URO-OVA mice (Liu, Chen et al. 2011).



## **1.5. ANIMAL MODELS FOR IC/PBS**

Numerous cystitis animal models have been generated in different ways such as through intravesical administration of immune stimulants, systemic and environmentally impelled inflammation, immunization with bladder homogenate, transgenic URO-OVA mice, and naturally occurring models.

### **1.5.1. EAC Induced by Immunization with Bladder Homogenate**

In different mice strains such as BALB/cAN, C3H/HEN, and C57BL/6, experimental autoimmune cystitis(EAC) animal model were generated with bladder homogenate and showed the some physiopathological features of cystitis (Bullock, Becich et al. 1992; Phull, Salkini et al. 2007). The initial experimental autoimmune cystitis was developed in BALB/cAN mice immunized with a syngeneic bladder homogenate that induced cell mediated autoimmunity after adoptive transfer of spleen cells from immunized mice into naïve host(Bullock, Becich et al. 1992). The edema, fibrosis, perivascular lymphocytic infiltrations and also the deposition of mast cell in detrusor muscle of bladder were demonstrated in this bladder homogenate induced cystitis model (Bullock, Becich et al. 1992).

Bladder homogenate obtained from syngeneic animal in Complete Freund's adjuvant was used to induce experimental autoimmune cystitis in Lewis rats, demonstrating urinary frequency, mast cell accumulation and vascular congestion (Luber-Narod, Austin-Ritchie et al. 1996). In another study SWXJ mice that are prone to the generation of autoimmune diseases were immunized with bladder homogenate and

developed experimental autoimmune cystitis showing the symptoms of increase urination frequency and decrease micturition volume along with histopathological alterations such as increased leukocytes infiltration, mast cell infiltration and thickened lamina propria (Lin, Liu et al. 2008).

Moreover, in guinea pig models, which were sensitized to Ovalbumin (OVA), developed experimental cystitis demonstrating mast cell infiltration after administration of Ovalbumin antigen into bladder (Saban, Christensen et al. 1991). In another parallel study in mice showed that Ovalbumin instillation transurethrally developed experimental cystitis, on the other hand mast cell deficient mice did not developed bladder inflammation (Saban, Saban et al. 2001). It was suggested that T helper cells could play a role in immune response in the bladder of antigen induced cystitis (Ratliff, Klutke et al. 1994; Ratliff, Klutke et al. 1995).

### **1.5.2. Naturally Occurring Cat Model for IC/PBS**

Feline model of IC showed the similar symptoms of IC/PBS such as increase urinary frequency and pain (Buffington, Chew et al. 1997). The lesser urinary excretion of GP-51 glycosaminoglycan, increased bladder wall permeability, elevated substance P immunoreactivity and neurokinin-1 receptors in this model were observed (Gao, Buffington et al. 1994; Caito and Masty 1995; Press SM 1995; Buffington and Wolfe 1998; Moldwin 2002). The major advantage of this cat model is generation with the absence of external stimulants. The restriction of this model is dissimilar gender distribution in cats compared to human; in human more than 90% of IC is women, in cats

about half to half distribution (Pontari MA 1995). And also the etiology of cystitis development on this cat model is unknown. Other issues are such as handling problems that require veterinarian involvement, and cost highly expensive handling this animal in animal facilities (Westropp and Buffington 2002).

### **1.5.3. Intravesical Irritant Instillation Models**

Urine of IC patients instilled into bladder of rabbits to test the histological and functional changes (Kohn, Filer-Maerten et al. 1998), intravesical acetone applied to induce IC in rats, monkeys, and rabbits (Kato, Kitada et al. 1990; Ghoniem, Shaaban et al. 1995; Shimizu, Kawashima et al. 1999). Moreover, intravesical acid administration showed increase neutrophil accumulation and edema (Elgebaly, Allam et al. 1992). An antineoplastic drug -Cyclophosphamide is mostly used for induction of cystitis in animals. It damages the urothelium, mucosa, and causes edema, leukocytes accumulation in bladder tissue and hemorrhage (Locher and Cooper 1970; Cox and Abel 1979; Lanteri-Minet, Bon et al. 1995). Mustard oil administration intravesically and electrical stimulation of pelvic ganglia were studied to test to bladder distension in regard to afferent fibers in visceral pain (Koltzenburg and McMahon 1986). Instillation of Xylene, lipopolysaccharide (LPS), and polyinosinic-polycytidilic acid incited inflammation in rat bladder (Luber-Narod, Austin-Ritchie et al. 1996).

### **1.5.4. EAC Induced by Immunization with Recombinant mUPK2 Protein**

The immune response to self-antigen mediated organ specific autoimmune diseases EAC model was generated by targeting uroplakins with recombinant rmUPK2

protein(Altuntas, Daneshgari et al. 2011). Bladder specific protein UPK2 was used to immunize the mice and assessed bladder urodynamic, showing the symptoms of increase urination frequency and decrease micturition volume along with increased T cell infiltration in the bladder.

#### **1.5.5. URO-OVA Mice**

EAC model with URO-OVA mice (produce a membrane structure of the Ag Ovalbumin(OVA) like a self-antigen on the urothelium driven by Uroplakin II gene promoter) formed autoimmune cystitis through OVA-specific OT-I CD8<sup>+</sup> T-cells; however OVA is not endogenous antigen of bladder and also the bladder urodynamic changes and pain correlated to IC/PBS phenotype have not been characterized (Liu, Evanoff et al. 2007; Liu, Deyoung et al. 2008).

#### **1.5.6. Immune Stimulant Induced Cystitis Models**

The bacterial product of LPS administration intravesically resulted into cystitis showing neutrophil invasion, hemorrhage and edema (Jerde, Bjorling et al. 2000). Neurokinin-1 knockout mice did not show inflammation and edema after instillation of dinitrophenyl-ovalbumin even the existing of high mast cells (Saban, Saban et al. 2000). In mast cell knockout mice, the intravenous administration of substance P or LPS incited cystitis in these mice (Bjorling, Jerde et al. 1999). In another study, the tail-side muscle injection of pseudorabies virus revealed bladder inflammation in rats (Jasmin, Janni et al. 1998). In mice model of cystitis with pseudorabies virus (PRV) injected, the

mast cell infiltration in lamina propria led by necrosis factor alpha (TNF) along with pelvic pain mediated by histamine have been demonstrated (Rudick, Schaeffer et al. 2008; Rudick, Schaeffer et al. 2009). In addition, the Cathelicidin (LL-37) an antimicrobial peptide were used to generate bladder inflammation in mice (Oottamasathien, Jia et al. 2011).

#### **1.5.7. Noxious Environmental Stimulus Induced Cystitis Animal Models**

Environmental stimulus induced cystitis animal model has been reported by administration of physical and psychological stress factors in such studies that restraint stress induced mast activation in bladder (Spanos, Pang et al. 1997), applied acute cold stress induced edema, leukocyte invasion, and mast cell degranulation in rat bladder (Ercan, San et al. 1999). In another study, it was shown the temperature mediated bladder pathological changes such as distraction of tight junctions, desquamation and damages of subapical vesicles that are alike observed in IC patients (Jezernik, Medalia et al. 1995; Elbadawi 1997; Lavelle, Meyers et al. 2000).

### **1.6. UROEPITHELIUM**

It was suggested that painful bladder syndrome occurs due to some modification on uroepithelium in IC. Urothelium, which have three cell layer containing basal cells, intermediate and umbrella cells, forms the inner surface of urinary bladder providing a barrier against urine and other metabolites (Khandelwal, Abraham et al. 2009). The tight junctions in bladder urothelium support the resistance of cells (Lewis and Kleine 2000). The defect of urothelial barrier such as damaging of tight junctions, umbrellas

cells, cell adhesions which are mostly observed in IC/PBS patients' bladder, could allow urine, noxious elements and chemical metabolites to invade into underneath layers of tissue and causing the symptoms of frequent o urinate, urgent to urinate and pelvic pain (Birder 2011; Birder, Hanna-Mitchell et al. 2011). Urothelium is in a web of interaction with immune and inflammatory cells along with bladder nerves, smooth muscle, urothelial cells and afferent nerves exist closer to the uroepithelium that could be stimulated by substances secreted by urothelium cells and bladder nerves(Birder and de Groat 2007; Birder 2011).

## **1.7. UROPLAKINS**

The mammalian Uroplakins comprising human, bovine and mouse, are highly conserved (Wu, Lin et al. 1994). Where UPII and UPIII contain a single transmembrane domain(Sun 2006) , UPIa and UPIb have four trans membrane domain (Levy and Shoham 2005). It is suggesting that Uroplakins take a part as a protective role for the Asymmetric Unit Membrane (AUM) from breaching during bladder expansion (Born, Pahner et al. 2003; Kong, Deng et al. 2004) . AUM particles consist of five Uroplakins (UPs), which are tetraspan structured UPIa and UPIb and single spanned UPII, UPIIIa, and UPIIIb proteins, are generated specifically in the urothelium except UPIb that is also expressed in the eye and reside in the umbrella cell layer (Wu, Medina et al. 1995; Deng, Liang et al. 2002). UPIa (27 kDa), UPIb (28 kDa), UPII (15kDa) and UPIIIa (47 kDa) are integral membrane proteins of urothelial plaques (Yu, Lin et al. 1994). The heterodimerization of UPII with UPIa and heterodimerization of UPIIIa or UPIIIb with UPIb are pivotal for transferring from endoplasmic reticulum to the cell surface (Wu,

Medina et al. 1995; Deng, Liang et al. 2002; Tu, Sun et al. 2002). The existences of the uroplakins in bladder are well chosen target for the establishment of EAC.

### **1.7.1. Function of Uroplakins**

Uroplakins possess different function in bladder such as contributing the barrier formation of apical membrane (Hu, Meyers et al. 2002), mediating bladder function alteration (Aboushwareb, Zhou et al. 2009) and cell signaling (Hasan, Ou et al. 2007; Thumbikat, Berry et al. 2009). Uroplakins (Ia, Ib) have substantial roles in immunologic signaling, infection, membrane structure, cell migration (Hemler 2003; Levy and Shoham 2005). The urodynamic with cystometry (CMG) studies on Uroplakin II and IIIa knockout mice showed significant bladder function alteration including increased nonvoiding contractions, the pressure between micturitions, remaining volume after voiding (Aboushwareb, Zho et al. 2007; Aboushwareb, Zhou et al. 2009). UPs are expressed mostly in urothelial tissues and are detected in the urothelial originated carcinomas more than 50% (Wu, Osman et al. 1998; Huang, Shariat et al. 2007).

### **1.7.2. UPIIIa and Plaques**

The apical surface of umbrella cells comprise hinges and plaques which form the scalloped appearance and plaques containing nearly 3000 AUM particles cover the more than 80% of umbrella cell surface (Kachar, Liang et al. 1999; Apodaca 2004). It was suggested that urothelial plaques could provide the sustainability of urothelium permeability barrier along with the apical membrane of umbrella cells and UPIIIa

knockout mice revealed a small number of plaques (Hu, Deng et al. 2000). And also the UPII deficiency caused totally absence of urothelial plaques (Kong, Deng et al. 2004).

The role of UPIIIa on permeability of apical membranes of umbrella cells was tested on UPIIIa knockout mice showing the increased permeability to water and urea, increase urothelial leakage through the umbrella cell layer (Hu, Deng et al. 2000; Hu, Meyers et al. 2002). IC/PBS commonly demonstrates the increase of bladder urothelium permeability (Parsons 2007). Moreover the diminished UPIIIa manifestation led hyperplastic uroepithelium, expanded ureters and vesicoureteral reflux (Hu, Deng et al. 2000). It was suggested that UPIIIa containing large cytoplasmic domain interrelates with cytoskeleton and these cooperation might stabilize membrane domains in umbrella cells (Hu, Deng et al. 2000; Apodaca 2004).

## **1.8. BIOMARKER FOR IC/PBS**

The possible biomarkers that are suggested for IC are the urine Antiproliferative factor (APF), Heparin-Binding EGF-like Growth Factor (HB-EGF), Epidermal Growth Factor (EGF), IL-6 and Insulin Like Growth Factor Binding Protein-3 (IGFBP3) (Erickson, Xie et al. 2002). Antiproliferative factor (APF), which is produced by urothelium of IC/PBS patients, showed the inhibitory effect on bladder cell proliferation and causing failure of damaged bladder tissues (Keay, Szekely et al. 2004; Hanno 2007).



## CHAPTER II

### METHODS

#### 2.1. Peptide

We employed an online database (<http://www.syfpeithi.de/>) (Hans-Georg Rammensee 1999) research of MHC and their recognized peptide motifs to predict potentially immunogenic peptides of known sequences for bladder-specific Uroplakins. The amino acid sequences of all three Uroplakins (Ia, Ib II, IIIa-b) were placed in online T- cell epitope, and MHC motif prediction program to figure out possible immunogenic peptide MHC motif sequence for each different mice strains(C57BL/6-**H2<sup>b</sup>**, BALB/c-**H2<sup>d</sup>**, C3H-**H2<sup>k</sup>**).

For the SWXJ mice, the peptides derived from the known sequences of Uroplakins were chosen based on having the -KXXS- tetrapeptide-binding motif for IA<sup>s</sup> and IA<sup>q</sup> MHC class II molecules expressed in this mouse (Table 1). We identified that UPK3A 65-84, 20-mer peptide derived from the mouse bladder specific Uroplakin 3A protein, contain -SXXVXV- binding motif for IA<sup>d</sup> MHC class II molecules expressed in

BALB/c mice was predicted the uppermost immunogenic according to online database. UPK3A 65-84 peptide, derived from the sequences of mouse bladder specific Uroplakin 3A protein and other peptides for SWXJ mice were synthesized and purified by the Molecular Biotechnology Core Facility of the Lerner Research Institute, Cleveland Clinic Foundation, Cleveland, OHIO. The standard solid phase approach and FMOC side chain-protected amino acids were used to synthesize the peptides. The peptides were purified >97% with Reverse Phase HPLC followed by mass spectrometry to check the amino acid sequences of peptides.

<b>PEPTIDES (UROPLAKINS)</b>	<b>MOUSE STRAIN</b>	<b>SEQUENCES &amp; MHCII BINDING MOTIF</b>
UPK1A 167-186	SWXJ	WVNYTSAF <u>RAAT</u> PEVVFPWP
UPK2 115-134	SWXJ	YYISYRVQ <u>KGTST</u> ESSPETP
UPK3A 36-55	SWXJ	TLTTVALE <u>KPLCM</u> FDSSEPL
UPK3A 65-84	SWXJ	AMVDSAMS <u>RNVSV</u> QDSAGVP
UPK3A 65-84	BALB/c	AMVDSAM <u>SRNVSV</u> QDSAGVP
UPK3B 159-178	SWXJ	VMDAAGPP <u>KAET</u> KWSNPIYL
UPK3B 132-151	SWXJ	GNDFGCYQ <u>RPYCN</u> APLPSQG
UPK3B 238-257	SWXJ	RIGSFMGK <u>RYMTH</u> HI PPSEA

**Table 1.** Uroplakin derived peptide sequences and MHC II binding motifs for SWXJ mice strain and BALB/c mice strain

## **2.2. Mice and immunization**

BALB/c female mice and SWXJ female mice were purchased from Jackson Laboratory, and at 6-8 weeks of aged mice were injected subcutaneously (s.c.) in the abdominal flank with or without 200µg of the peptides (Table 1) in 200 µl of an emulsion of equal volumes of water and Complete Freund's Adjuvant (CFA) containing 400 µg of Mycobacteria tuberculosis H37RA (Difco Laboratories, Detroit, Michigan, USA). All protocols were pre-approved by the institutional animal care and use committee of the Case Western Reserve University in compliance with the Public Health Service policy on humane care and use of laboratory animals.

## **2.3. Weighting Bladder Tissues**

At 5 weeks after immunization the mice and bladder weight were measured. The ratio of bladder weight/body weight was calculated and compared with control-CFA immunized group.

## **2.4. Cell culture and Proliferation Assays**

As it described previously (Jane-wit, Yu et al. 2002; Altuntas, Johnson et al. 2006; Altuntas, Daneshgari et al. 2011), to find out the immunogenicity of peptides, inguinal and axillary lymph node cells (LNCs) were removed from mice at 10 days after immunization with UPK3A 65-84 or the other peptides. The removed LNCs were placed on a tissue culture dish and teased them apart into single cell suspension by squashing

with 3ml syringe plunger through with a cell strainer(nylon mesh) removing the clumps and debris. The cell suspensions were washed with Hank's Buffered Salt Solution (HBBS) (Life Technologies, Grand Island, NY) and centrifuged for 10 minutes at 300xg at 4<sup>0</sup>C. The cell pellets were suspended and the cell count was made to check viability. The cells were cultured in a way of single-cell suspension in 96-flat-bottom-well microtiter Falcon plates (BD Biosciences, San Jose, CA, USA) at 3x10<sup>5</sup> cells/well in Dulbecco modified Eagle medium (DMEM) (Mediatech CellGro, Herndon, VA, USA) with 10% fetal bovine serum (HyClone), 5% HEPES buffer, 2% L-glutamine, and 1% penicillin/streptomycin (Invitrogen Life Technologies) included. And then the peptides and Ovalbumin (as a control) were added in serial 10-fold dilutions to triplicate wells with positive control wells containing 2 µg/ml antimouse CD3 (BD Biosciences).

**T cell isolation**-The CD4<sup>+</sup> and CD8<sup>+</sup> T cells proliferative response to the UPK3A 65-84 peptide was determined. CD4<sup>+</sup> and CD8<sup>+</sup>T cells were purified and isolated from 10-day primed LNC by using anti-CD4- and anti-CD8-coated magnetic bead sand through a MACS LS column using a Midi MACS cell separator (Miltenyi Biotec, Auburn, CA, USA). The purified 3x10<sup>5</sup> cells/well of CD4<sup>+</sup> or CD8<sup>+</sup> T cells were cultured with 5 × 10<sup>5</sup> cells/well gamma-irradiated (2000 rads) syngeneic splenocyte feeders.50 µg/ml of UPK3A 65-84 peptide or Ovalbumin (control) were inserted into triplicate cultured wells with positive control wells containing 2 µg/ml antimouse CD3 (BD Biosciences).

All the cultured cells were incubated at 37 °C in humidified air containing 5% CO<sub>2</sub>. After 96 hours of culture, wells were pulsed with [methyl-3H] thymidine (1 µCi per

well; specific activity 6.7 Ci/mmol; New England Nuclear, Boston, MA, USA) and harvested 16 h after pulsing by aspiration onto glass fiber filters. The level of incorporated radioactivity was determined by scintillation spectrometry. The results are showed as mean counts per minute (cpm) of triplicate experimental cultures and/or cpm of cultures with antigen divided by mean cpm of cultures without antigen (stimulation index; (Jane-wit, Yu et al. 2002).

## **2.5. Cytokine Analysis**

As described in previous studies (Altuntas, Johnson et al. 2006; Altuntas, Daneshgari et al. 2011); IFN- $\gamma$ , IL-2, IL-4, IL-5 and IL-10 cytokine concentrations were determined by ELISA. The measurement was performed on the 48 hour supernatants of 10-day-primed LNC cultured in supplemented DMEM at  $5 \times 10^6$  cells/well in 24-well flat-bottom Falcon plates (BD Biosciences) in the presence of 25  $\mu\text{g/ml}$  UPK3A 65-84 and Ovalbumin (as a control) in a final volume of 2.0 ml/well. Purified capture/detection Ab pairs and recombinant cytokines were obtained commercially (BD Biosciences) and included anti-mouse IFN- $\gamma$  (R4-6A2 and biotin XMG1.2), anti-mouse IL-2 (JES6-1A12 and biotin JES6-5H4), anti-mouse IL-4(11B11 and biotin BVD6-24G2), anti-mouse IL-5 (TRFK5 and biotin TRFK4), and anti-mouse IL-10 (JES5-2A5 and biotin SXC-1). Microtiter plates were coated with anti-cytokine capture mAb (0.5-2 $\mu\text{g/ml}$ ) in 50  $\mu\text{l}$  PBS for 6 hours at room temperature (RT). Wells were blocked with 200 $\mu\text{l}$  of 3% BSA in PBS for 2 hours at RT. 100  $\mu\text{l}$ /well from each samples were added and incubated at RT for 4 hours. From the biotinylated anti-cytokine detecting mAb(1-2 $\mu\text{g/ml}$ ) 100 $\mu\text{l}$  were added after washing steps and incubated at RT for 45 minutes. Following the washing steps

100µl/well Avidin-peroxidase were incubated 30 minutes at RT. Working substrate solution, ABTS, was added to all wells for 20-30 minutes and followed by the addition of stop solution. Absorbance was measured at 405 nm using a model Versamax ELISA microplate reader (Molecular Devices, CA). Standard values were plotted as absorbance vs cytokine concentration, and sample cytokine concentrations were determined as values within the linear part of the standard curve established using known concentrations of each cytokine.

## **2.6. Total Antibody Titer**

The total antibody titer was determined by enzyme-linked immunosorbent assay (ELISA) in sera. 5 week after immunization the serum samples were obtained from the each immunized mice with UPK3A 65-84 and from Ovalbumin injected mice. After the coating the microwell plate with peptide antigens, the different serial dilutions (1/200, 1/400, 1/800, 1/1600, 1/3200, 1/6400, 1/12800, 1/25600) of serum samples of each mice (n=5) were used. The goat-anti-mouse antibody IgG (H+L)-HRP (Horseradish Peroxidase) conjugated (1/8000) (Southern Biotech) was used. The plates were read by ELISA reader at 405 nm.

## **2.7. Isotype-Specific Antibody Titers**

As described in (Altuntas, Johnson et al. 2006; Altuntas, Daneshgari et al. 2011), Isotype-specific antibody titers to UPK3A 65-84 was determined in the serum samples of immunized mice 5 week after immunization, according to the manufacturer's instructions

using the mouse Mono AB ID/SP ELISA kit (Zymed, Invitrogen, Carlsbad, CA, USA). In brief, UPK3A 65-84-antigen (10 $\mu$ g/ml) in 50 $\mu$ l PBS coated the microtiter plates and incubated at 4 $^{\circ}$ C overnight. Wells were blocked with 1% of BSA in PBS for 1 hour at 37 $^{\circ}$ C after washing. The serum samples (n=4) were serially diluted and 50 $\mu$ l of sera was added to each well and incubated for 30 minutes at 37 $^{\circ}$ C. The biotinylated antibodies specific to each mouse antibody isotypes (IgG1, IgG2a, IgG2b, IgG3) in 50 $\mu$ l PBS were added and incubated for 30 minutes at 37 $^{\circ}$ C, and followed by addition of horse radish peroxidase (HRP)-streptavidin (50 $\mu$ l/well, 30 minutes at 37 $^{\circ}$ C) and substrate solution ABTS ((2, 2'-Azinobis [3-ethylbenzothiazoline-6-sulfonic acid]-diammonium salt) administration and then the absorbance was measured at 405 nm by ELISA reader.

## **2.8. Real Time-PCR**

The inflammatory genes(IFN- $\gamma$ , TNF- $\alpha$ , IL-1 $\beta$ , IL-17A) expression levels was performed 5 weeks after immunization in the bladders of immunized and control mice(CFA injected group and Naïve mice) comparing with the kidney, ovary, uterus, and liver. Total RNA was extracted from bladder of EAC mice and controls and then converted to cDNA for gene expressions analysis. RNAs were extracted from bladders following Invitrogen TRIzol protocol (Invitrogen). cDNAs were synthesized with Invitrogen Super Script III cDNA Synthesis Kit. The primers were designed with online Universal Probe Library Assay Design Center of Roche. qRT- PCR using the Sybr Green PCR Master kit (AB, USA) with ABI Prism 7500 Sequence Detection System was conducted using the following primer pairs: interferon (IFN)  $\gamma$ , sense, TGATGGCCTGATTGTCTTTCAA, antisense, GGATATCTGGAGGAACTGGCAA;

tumor necrosis factor (TNF)  $\alpha$ , sense, CAAAGGGAGAGTGGTCAGGT, antisense, ATTGCACCTCAGGGAAGAGT; interleukin (IL) 1 $\beta$ , sense, GAGTGTGGATCCCAAGCAAT, antisense, AGACAGGCTTGTGCTCTGCT; IL-17A, sense, TCCACCGCAATGAAGAC, antisense, CTTTCCCTCCGCATTGAC;  $\beta$ -actin, sense, GGTCATCACTATTGGCAACG, antisense, ACGGATGTCAACGTCACACT. The quantitation of gene expression levels were calculated with comparative Ct method. The Ct values of the samples from immunized mice and the control mice are normalized to endogenous housekeeping gene,  $\beta$ -Actin.

## **2.9. Histologic Analysis**

Mice were sacrificed and bladders weighed. The bladder was sectioned at the equatorial midline and fixed in 10% neutral formalin. After fixation, the tissues were dehydrated and embedded in paraffin. Serial 5- $\mu$ m cut tissue sections were placed on microscope slides, dewaxed, and rehydrated for routine hematoxylin and eosin staining. Gross histologic observations were performed using light microscopy (Olympus DP70 digital microscope).

## **2.10. Immunocytochemistry**

Immunostaining was performed as described in Altuntas et al., 2006(Altuntas, Johnson et al. 2006). Briefly, unmasked in 1 mM EDTA and blocked formalin-fixed paraffin-embedded 5- $\mu$ m tissues sections were treated with a 1:250 dilution of rat antimouse CD3 (Novacastra, Newcastle Upon Tyne, UK) followed by a 1:100 dilution of



mouse-adsorbed biotinylated goat anti rat immunoglobulin (IgG) (BD Biosciences). Slides were treated with 1.5% H<sub>2</sub>O<sub>2</sub> in methanol and then the slides were developed conventionally using streptavidin-horseradish peroxidase complex (ABC kit; Vector Laboratories, Burlingame, CA, USA), 3, 3'-diaminobenzidine chromogen solution and H<sub>2</sub>O<sub>2</sub> substrate (Biognex, San Ramon, CA, USA). The slides were stained with H&E and dehydrated in an ascending gradient of ethanol followed by xylene. The slides were examined by light microscopy (Olympus DP70 digital microscope).

### **2.11. Urinary Frequency-Volume Assessment (FVC)**

Twenty four hr earlier to FVC assessment, solid food was eliminated from cages and supplied with lactose-free milk to minimize the frequency and mass of the feces produced at the time of examination (Liu and Daneshgari 2006). 24-hr micturition and sipping behaviors of mice were measured by placing each mouse individually in metabolic cages (MED-CYT-M; Med-Associates, St. Albans, VT). Urine was collected in a plastic tray located on an analytical balance (VI- 3 mg; Acculab, Huntingdon Valley, PA) set directly underneath of each cage. Balances were linked to a data acquisition software program advanced by manufacturer, which measure the weight of urine collection along the defined period of time. Throughout testing, mice were provided with free access to lactose-free milk and water, and the testing room was maintained on a light/dark cycle alike usual housing environments. At end of testing, milk and water bottles were examined to quantity consumption of fluid over the 24 hr period. The data is analyzed with OriginLab Data Analysis and Graphic Software.

### **2.12. Pain Assessment**

We assessed the pelvic pain response of mice by using calibrated von Frey monofilaments after the 5 weeks of immunization and after adoptive of CD4<sup>+</sup> T cells, CD8<sup>+</sup> T cells, serum, and B cells at day 5, 10, 20, 30. We tested pelvic pain by using quantitative behavior testing methods to assess tactile sensitivity of pelvic region (Rudick, Schaeffer et al. 2008; Rudick, Schaeffer et al. 2009). The von Frey filaments applied to the pelvic region of the BALB/c mice. The withdrawal frequency was calculated in percentage out of 10 times poked mice with each of the von Frey filaments. The measurement was assessed with 12 von Frey hairs using the sizes 1.65, 2.36, 2.44, 2.83, 3.22, 3.61, 3.84, 4.08, 4.17, 4.31, 4.56, 4.74 with the forces (gr) 0.008, 0.02, 0.04, 0.07, 0.16 0.4, 0.6, 1, 1.4, 2, 4, 6 respectively. The each of the filaments was employed for 1-3 second in an order beginning from the thinner to thicker with a 5-8 second intervals between two stimuli, completing to 10 times pocking.

### **2.13. Adoptive Transfer of EAC**

To determine whether EAC (transferring the immunologic functionality and features into naïve host) could be transferred into naïve BALB/c mice, the isolated and activated CD4<sup>+</sup> T cells, CD8<sup>+</sup> T cells, B-Cells and also collected Sera from immunize groups were used. 6- to 8-week-old BALB/c female mice were immunized s.c. in the abdominal flank on day 0 with either 200 µg Ovalbumin (OVA; Sigma) or 200 µg UPK3A 65-84 in 200 µl of an emulsion of equal volumes of water and Freund's adjuvant (Difco) and 400 µg Mycobacteria tuberculosis H37RA (Difco, Detroit, Michigan).

Ovalbumin was used as a control. Lymph node cells were taken at day 8-10 after immunization and LNCs were stimulated with immunogens (50 µg/ml) in vitro for 96 hours, and the isolated and purified  $2 \times 10^7$  CD4+ or CD8+ T cells by magnetic bead separation were transferred into naive mice by i.v tail vein injection ( $2 \times 10^7$  cells in PBS, 200 µl per mice/naïve recipient) and the development of EAC phenotype was assessed by measuring micturition frequency by FVC at day 20, and referred pelvic pain by von Frey Filaments at day 5, 10, 20, 30. Correspondingly, B-Cells were isolated from spleens of immunized mice 5 weeks after injection with peptides (UPK3A 65-84, or Ovalbumin) with magnetic bead separation using anti-CD45R (B220) Micro Beads, mouse, (Miltenyi Biotec). The isolated B-Cells were transferred into syngeneic naïve recipient by i.v. tail vein injection at  $2 \times 10^7$  cells/per mice ( $2 \times 10^7$  cells in PBS, 200 µl per mice/naïve recipient). Likewise, serum samples taken from at 5 weeks after immunization with immunogens (UPK3A 65-84 or Ovalbumin), the collected and pooled sera were injected (3 injections of 200 µl per mice, i.v, every other day) into naive recipient BALB/c female hosts for determining their ability to mediate disease.

#### **2.14. Cystometrogram (CMG)**

CMG testing was performed as previously described (Kim, Huang et al. 2007; Liu, Lin et al. 2010). 5 weeks after immunization mice were put in particular metabolic cages for 2–4 h. During this time, the PE-10 catheter was attached via a stopcock to both a pressure transducer and a flow pump. The bladder was then filled with room temperature saline (1 ml/h) via the catheter, while bladder pressure was recorded. The animals were conscious and could micturate through the urethra during the study. Urine

was collected in a beaker on a force transducer (Model PT5, Astro-Med) set underneath of every cage. The pressure and force transducers were connected to an amplifier, chart recorder, and a computer for recording data. With CMG data the following measurements were performed: threshold pressure, peak voiding pressure, resting pressure, compliance, and mean inter contractile intervals. Peak voiding pressure was described as the highest pressure throughout micturition. Threshold pressure was the pressure just before the initial micturition phase. Resting pressure is the pressure right after the micturition. Compliance was calculated by dividing the voided volume by the variation in bladder pressure throughout the voiding phase (threshold pressure minus the resting pressure). The mean intercontractile interval is the time between the start of the one voiding cycle (initial resting pressure) to the end of that voiding cycle (end of the micturition phase).

## **2.15. Statistical analysis**

The unpaired Student t-test was used to analyze differences in micturition frequency, mean urine output/micturition ratio, and bladder weight/body weight ratio between UPK3A 65-84 and control-immunized mice. For RT-PCR experiments, statistical analysis was performed using a one-way analysis of variance (ANOVA) with Tukey's post hoc test for comparisons between groups. The pain differences between groups were analyzed by a one-way ANOVA followed by a posthoc test comparison using Dunnet's multiple comparisons. A value of  $p < 0.05$  was considered statistically significant.

## CHAPTER III

### RESULTS

#### 3.1. Immunogenic Peptides Selection and Prediction Based on MHC motifs

The online database (<http://www.syfpeithi.de/>) (Hans-Georg Rammensee 1999) research of MHC and their recognized peptide motifs gave us potentially highly immunogenic peptides of known sequences of bladder-specific Uroplakins for BALB/c mice. For the SWXJ mice, peptides were derived from the known sequence of Uroplakins were selected based on having the -KXXS- tetrapeptide-binding motif for IAs and IAq MHC class II molecules expressed in SWXJ mice (Table I). The KXXS motif has been used for immunogenic peptide selection in many studies (Table II) such as experimental autoimmune encephalomyelitis (EAE) in SWXJ, SWR/J and SJL/J mice (Tuohy and Thomas 1995; Tuohy, Thomas et al. 1995), experimental autoimmune myocarditis and autoimmune sensorineural hearing loss in SWXJ mice (Jane-wit, Yu et al. 2002; Solares, Edling et al. 2004). We identified that UPK3A 65-84, 20-mer peptide derived from the mouse bladder specific Uroplakin 3A protein, contain -SXXVXV- binding motif for IA<sup>d</sup> MHC class II molecules expressed in BALB/c mice was predicted the uppermost

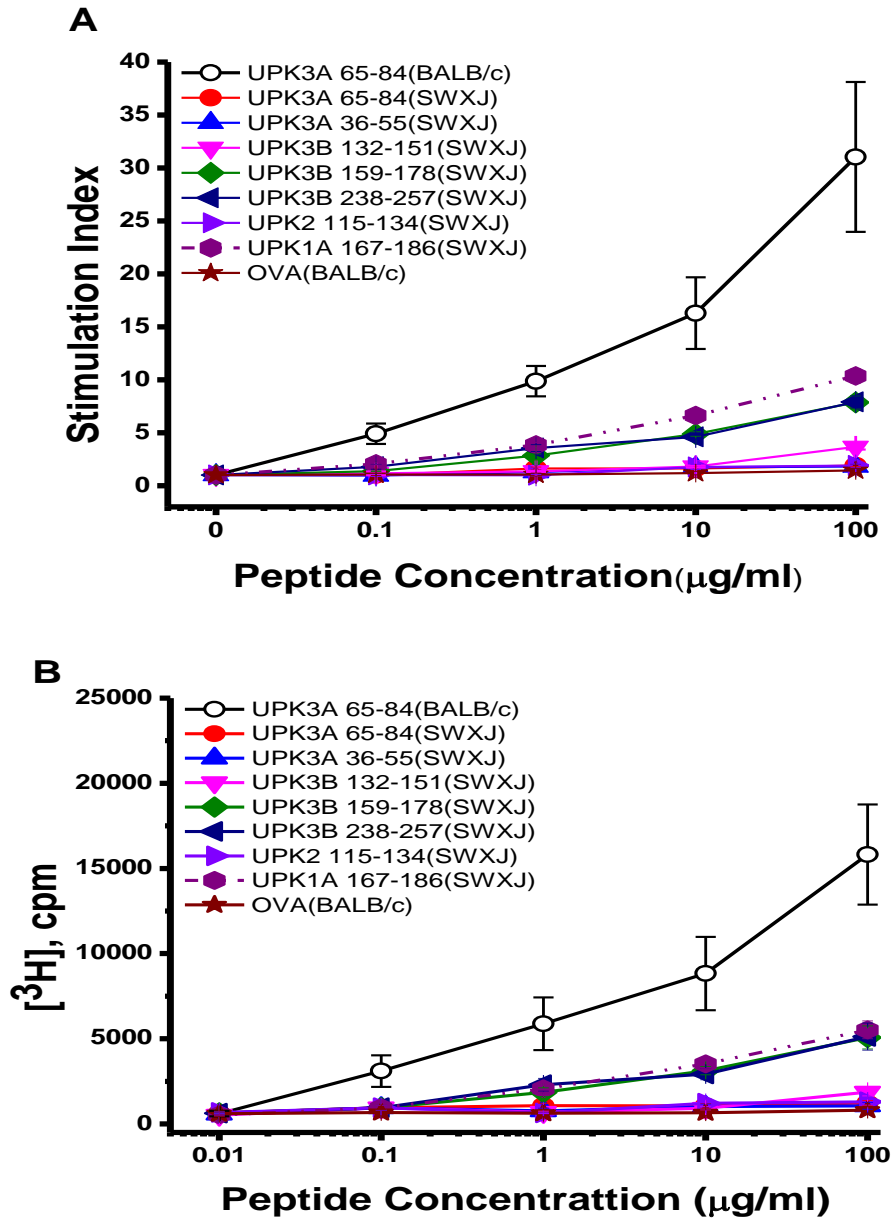
Immunogenic according to online database and [methyl-3H] thymidine incorporated proliferation assays.

<b>Immunogenic Peptide</b>	<b>Amino Acid Sequence -KXXS- Motif</b>	<b>Reference</b>
PLP 104-117	KTTICG <b>-KGLS</b> -ATVT	(Tuohy and Thomas 1995)
MOBP 37-51	REIVD <b>-RKYS</b> -ICKSGC	(Amor, Groome et al. 1994)
MOG 92-106	DEGGYTCFF <b>-RDHS</b> -YQ	Holz, Bielekova et al. 2000)
CAMHC 406-425	KVGNEYVT <b>-KGQS</b> -VQQVYYSI	(Jane-wit, Yu et al. 2002)
CAMHC 1631-1650	LSQAN <b>-RIAS</b> -EAQKHLKNSQA	(Jane-wit, Yu et al. 2002)
Coch 131-150	STQEATG <b>-RAVS</b> -TAHPPSGKR	(Solares, Edling et al. 2004)
$\beta$ -tectorin 71-90	FVIPDLSP <b>-KNKS</b> -YCGTQSEY	(Solares, Edling et al. 2004)
In $\alpha$ 215-234	FLVAHTRA <b>-RAPS</b> -AGERARRS	(Altuntas, Johnson et al. 2006)

**Table 2.**Mostly used immunogenic peptides with -KXXS- MHC motif sequences.

### **3.2. Immunogenic UPK3A 65-84 Peptide Elicited Proliferative Response in BALB/c mice.**

UPK3A 65-84, 20-mer peptide derived from the mouse bladder specific Uroplakin 3A protein, contain -SXXVXV- binding motif for IA<sup>d</sup> MHC class II molecules expressed in BALB/c mice was predicted highly immunogenic according to online database (<http://www.syfpeithi.de/>). The relatively highest immunogenicity of this peptide among the other peptides was confirmed with [methyl-3H] thymidine incorporated proliferation assays. Lymph node cells (LNC) taken 10 days after immunization with UPK3A 65-84 showed antigen specific proliferative responses to UPK3A 65-84 but were unresponsive to Ovalbumin as a control (Figure 1a-b). UPK3A 65-84 was able to elicit extensive recall proliferative responses whereas the rest of the peptides were relatively non-immunogenic when assessed through stimulation index or with cpm.

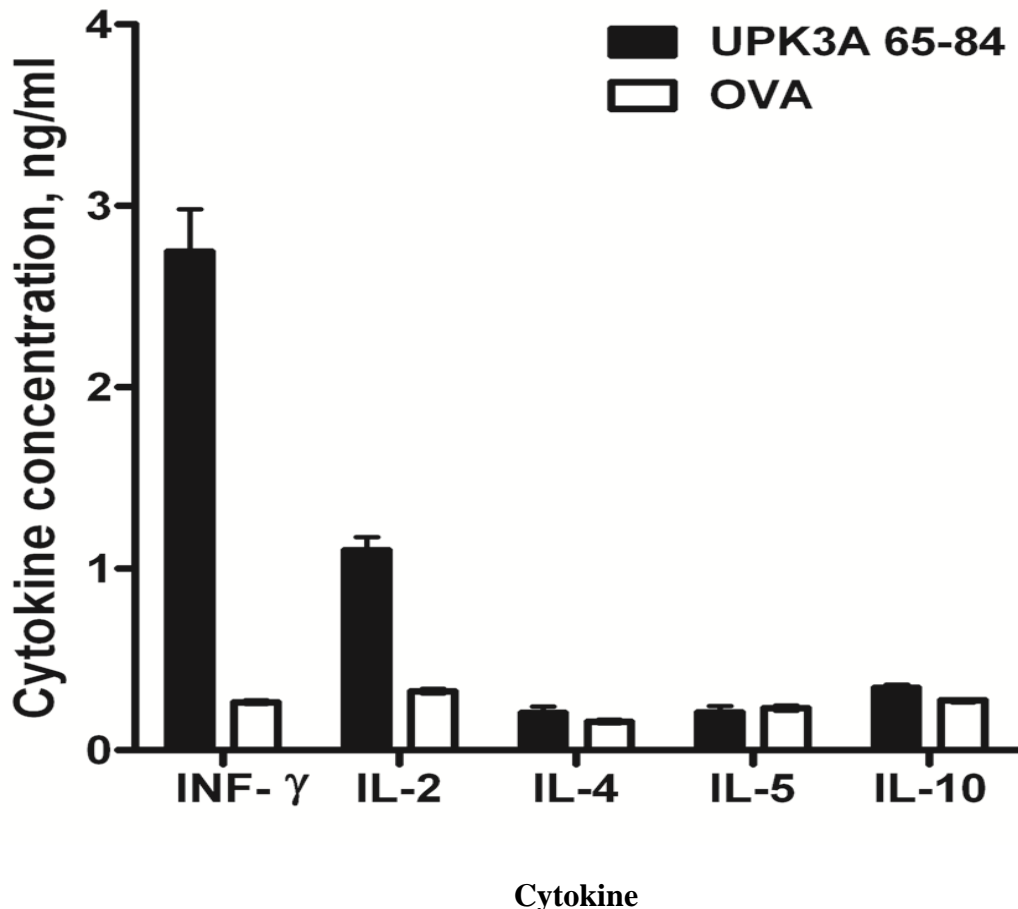


**Figure 1. UPK3A 65-84 is Highly Immunogenic in BALB/c mice.** 20-mer peptide derived from Uroplakin proteins, contain -SXXVXV- binding motif for IA<sup>d</sup> MHC class II molecules expressed in BALB/c mice, and for the SWXJ mice, peptides were derived from the known sequence of Uroplakins were selected based on having the -KXXS- tetrapeptide-binding motif for IA<sup>s</sup> and IA<sup>q</sup> MHC class II molecules expressed in this mice. Characterization of the Immune Response to UPK3A 65-84- Lymph node cells (LNC) taken 10 days after immunization with UPK3A 65-84 and other peptides showed: (A-B) antigen specific recall proliferative responses to UPK3A 65-84 but not to Ovalbumin, and other Uroplakin derived peptides (n=5), expressed results are the mean of triplicate cultures pulsed with [methyl-3H] thymidine graphed based on the stimulation index (A) and radioactivity in cpm (B).



### 3.3. Th1-like Proinflammatory Phenotype was revealed to UPK3A 65-84 in immunized mice.

ELISA analysis of 48 hour supernatants of cultured and peptide induced LNCs from 8-10-day after immunization showed that the recall responses to UPK3A 65-84 was a proinflammatory type-1 cytokine response characterized by enhanced expression of IFN $\gamma$  and IL-2 and nearly no production of IL-4, IL-5 and IL-10 (Figure 2).



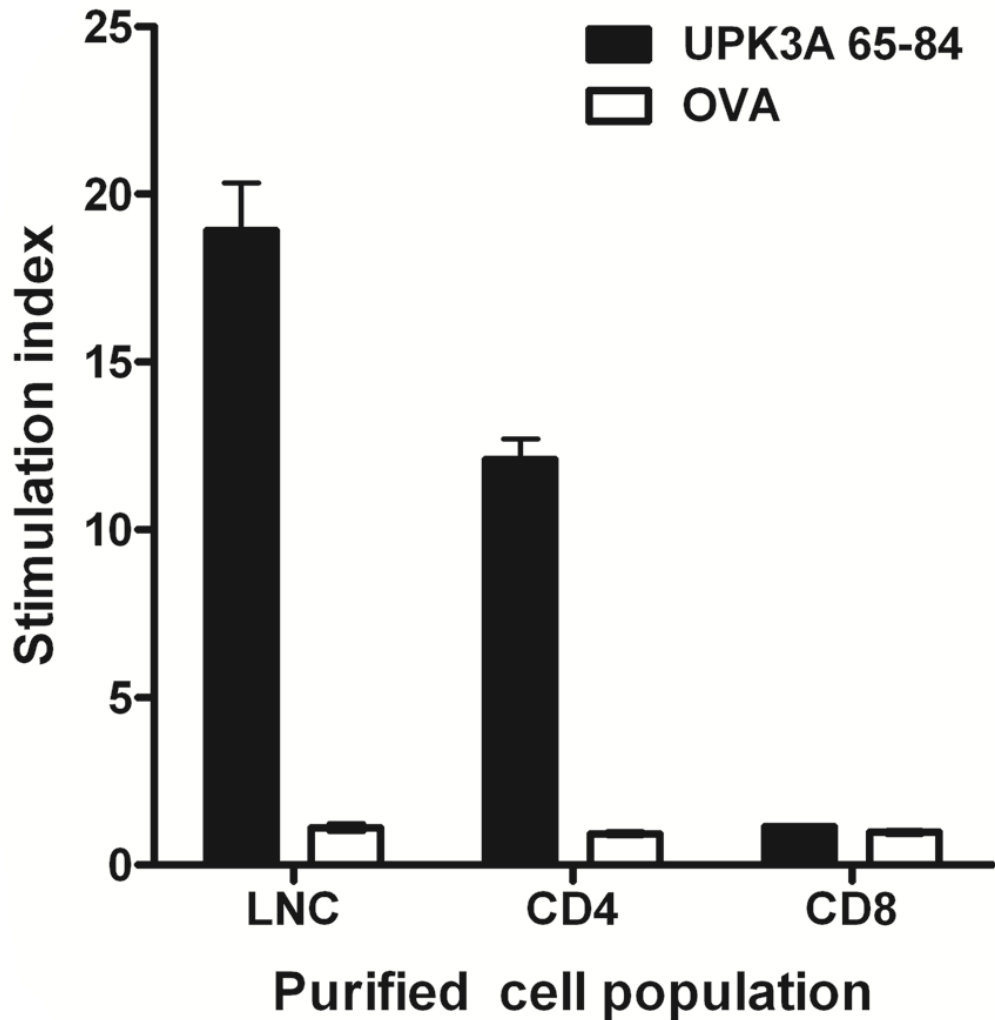
**Figure 2. UPK3A 65-84 Induces a Th1-like Proinflammatory Response.** ELISA analysis of cytokines from the 48-hour supernatant of cultured LNCs demonstrated the response to UPK3A 65-84, a proinflammatory type-1 phenotype with high production of IFN $\gamma$  and IL-2 and low production of IL-4, IL-5 and IL-10 in response to UPK3A 65-84, (n=8).

### **3.4. UPK3A 65-84 Activates CD4+ Proinflammatory Th1-Like T Cells in an IAd-restricted Manner**

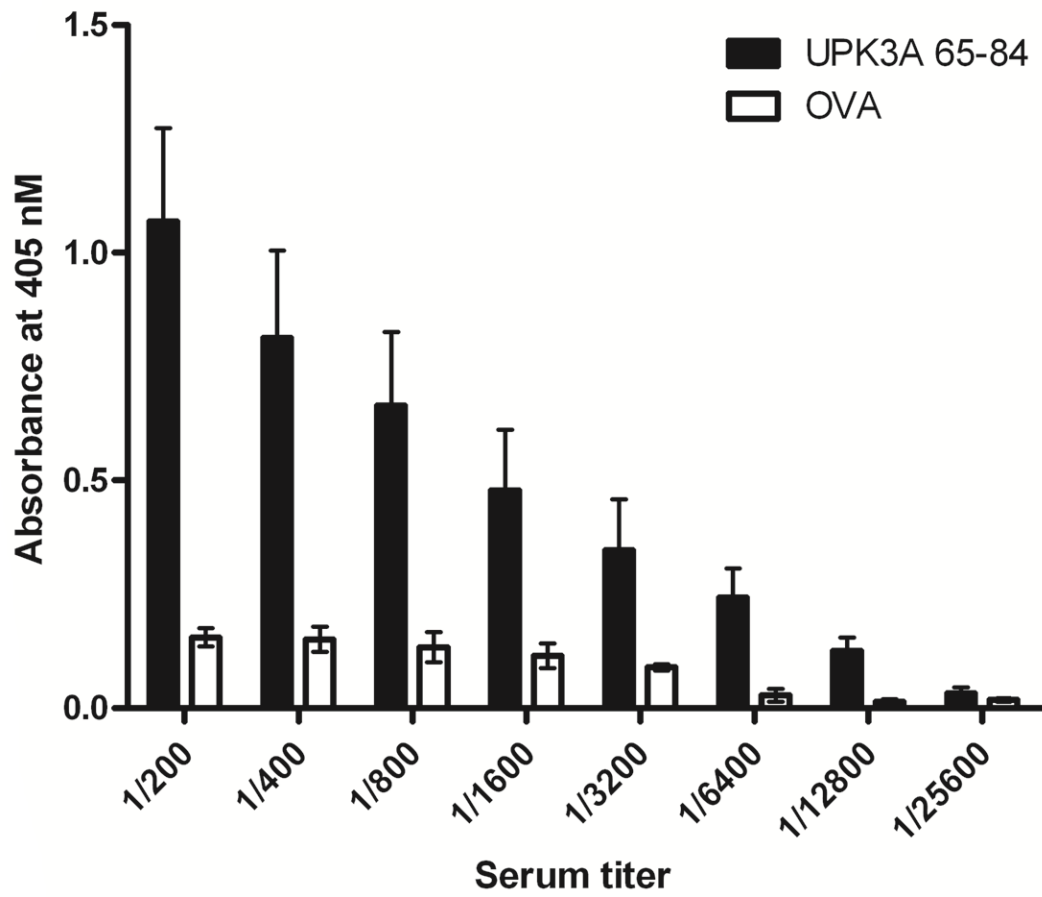
UPK3A 65-84 was capable of inducing CD4+ T –cell proliferative response. Its responsiveness was elicited from purified (>90%) CD4+ T cells and LNC but not CD8+ T cells (Figure 3). CD4+ T cells and CD8+ T cells were purified from whole LNC by magnetic bead separation and reactivity to UPK3A 65-84 at 50µg/mL was examined in culture with gamma-irradiated syngeneic splenocyte feeders. The CD4+ enriched T-cells demonstrated enhanced proliferation to UPK3A 65-84 compared to the enriched CD8+ T-cells and LNC at 8-10 days after immunization (Figure 3). This confirms that UPK3A 65-84 preferentially actuates CD4+T cells restricted to IA<sup>d</sup> of MHC class II molecules in BALB/c mice.

### **3.5. High Titer Antibody Response to UPK3A 65-84 along with Type 1 antibody isotype was showed in Immunized mice.**

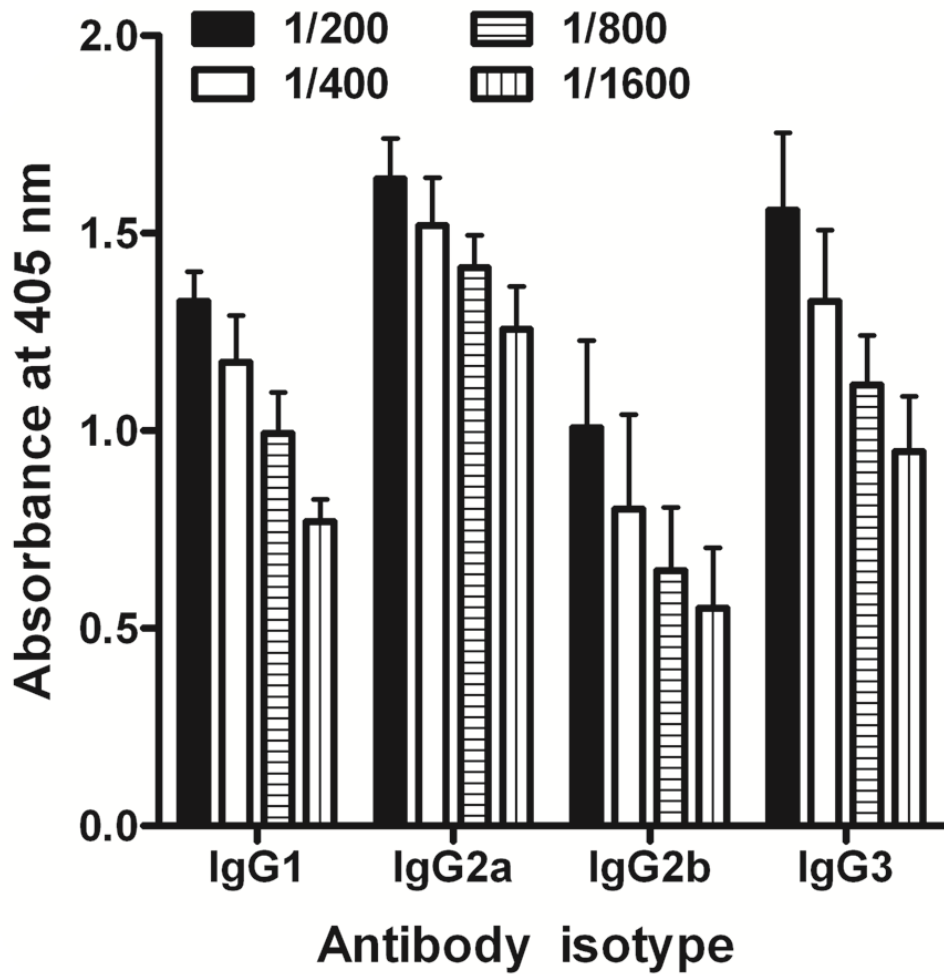
All sera collected from mice at 5 weeks after immunization and serially diluted antibody isotype titers to UPK3A 65-84 were determined. The high titer systemic serum antibody response to UPK3A 65-84 peptide was observed (1/12,800) (Figure 4). In some mice immunoreactivity the titer was clearly detectable at dilutions exceeding 1/12,800. The predominant antibody isotypes to the UPK3A 65-84 peptide were IgG2a and IgG3, which are known to be induced by IFN-γ, and inhibited by IL-4. This finding indicated that the response to peptide is Th1-associated Ab response with elevated production of IgG2a and IgG3, low production of IgG1, and IgG2b (Figure 5).



**Figure 3. CD4+ T cell Reactivity to UPK3A 65-84.** The high recall proliferative response to LNC and from CD4+ T cells, but not CD8+ T cells, purified (>90%) by magnetic bead separation, (n=5), results are the mean of triplicate, after 96 hour, wells were pulsed with [methyl-3H] thymidine and harvested 16h later by aspiration onto glass fiber filters. The incorporated radioactivity was determined with scintillation spectrometry. All error bars show  $\pm$ SE.



**Figure 4. High Antibody Response to UPK3A 65-84.** ELISA analysis of sera taken 5 weeks after immunization with UPK3A 65-84 showed high titer serum antibody responses to UPK3A 65-84 but not Ovalbumin (n=5).

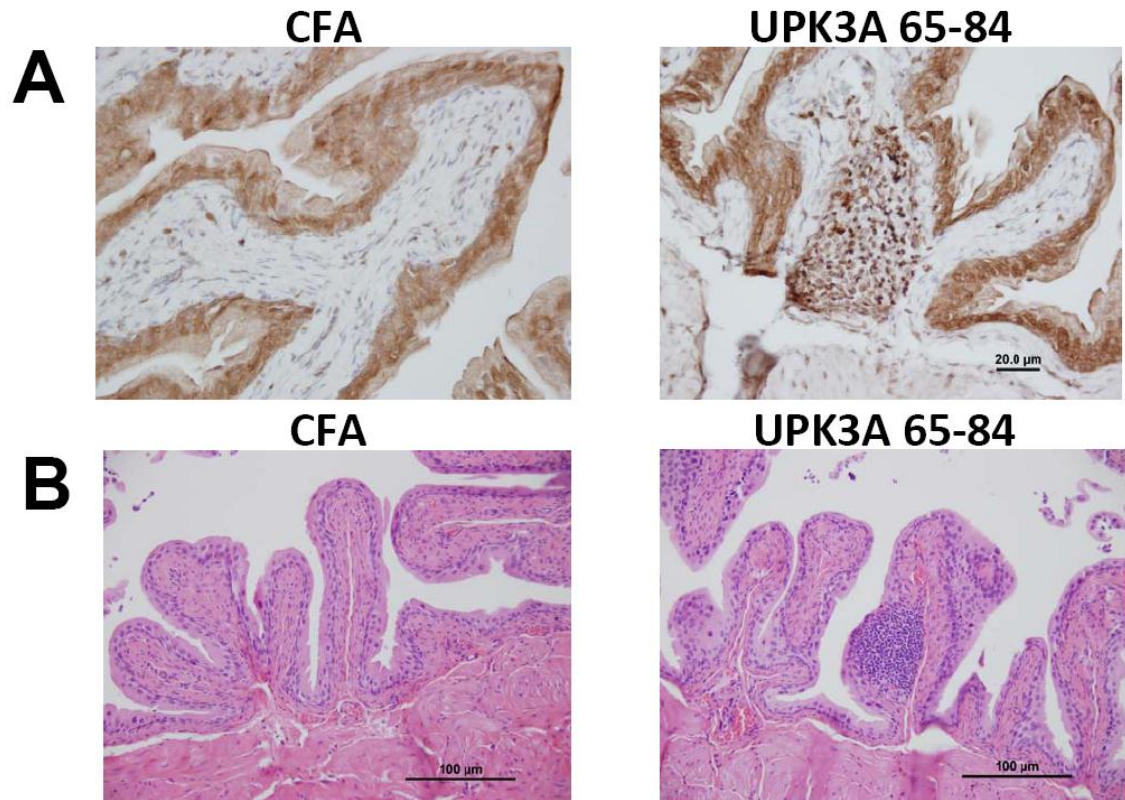


**Figure 5. Type 1 Antibody Isotype Response to UPK3A 65-84.** The antibody response to UPK3A 65-84 was predominantly a type-1 response involving high production of IgG2a and IgG3, low production of IgG2b and IgG1 (n=4). All error bars show  $\pm$ SE.

### **3.6. Active Induction of EAC in BALB/c mice Immunized with UPK3A 65-84**

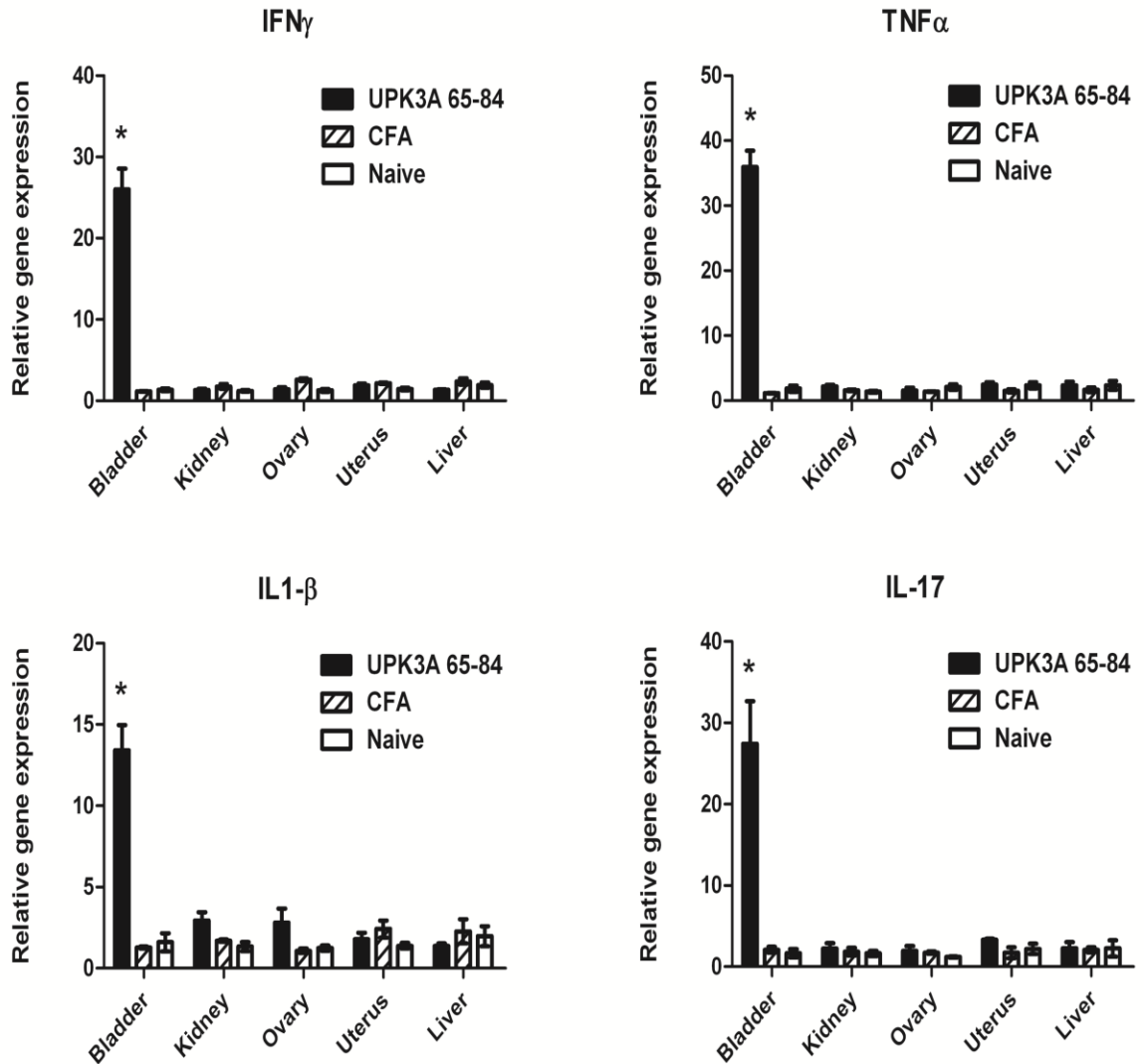
Active immunization of BALB/c mice with 200 µg of UPK3A 65-84 in CFA resulted in induction of experimental autoimmune cystitis 5 weeks after immunization. Immunocytochemical staining for T-cells determinants in the bladder tissue after 5 weeks after immunization, showed that the bladder infiltrating cells were predominantly T cells (Figure 6a, right) and that such T cell infiltration was not evident in bladders from control mice (Figure 6a, left). Hematoxylin and Eosin(H&E) stained bladder sections taken 5 weeks after immunization with UPK3A 65-84 showed extensive perivascular infiltration (Figure 6b, right) that was not evident in any sections taken from CFA immunized control mice (Figure 6b, left). The bladder T cell accumulation in UPK3A 65-84 immunized mice was predominantly located under the urothelial epithelium, the area of lamina propria.

Bladder specific inflammation was demonstrated in mice immunized with UPK3A 65-84. qRT-PCR analysis showed significantly elevated gene expression levels of the inflammatory cytokines, TNF $\alpha$ , IL-17a, IFN $\gamma$ , and IL-1 $\beta$  in the bladder but not in the kidney, ovary, uterus, and liver of immunized mice with UPK3A 65-84 compared to tissues taken from age- and sex-matched naive mice or control mice immunized with CFA(P<0.001 in all cases) (Figure 7). We clearly determined that the inflammation is confined to bladder tissue of EAC mice.



**Figure 6. H&E and Immunocytochemical Staining of Bladder Tissues**

(A) Immunocytochemical analysis of bladder tissue. Immunostaining with CD3 antibody showed a predominance of T cells in the bladder infiltrates of mice immunized with UPK3A 65-84 (right panel) not evident in anti-CD3 stained sections from control mice immunized with CFA (left panel). Solid bar = 20 μm for sections. (B) Hematoxylin and Eosin stained bladder sections taken 5 weeks after immunization with UPK 3A 65-84 showed extensive perivascular infiltration (right panel) not evident in sections taken from CFA immunized control mice (left panel). Solid bar = 100 μm for sections.

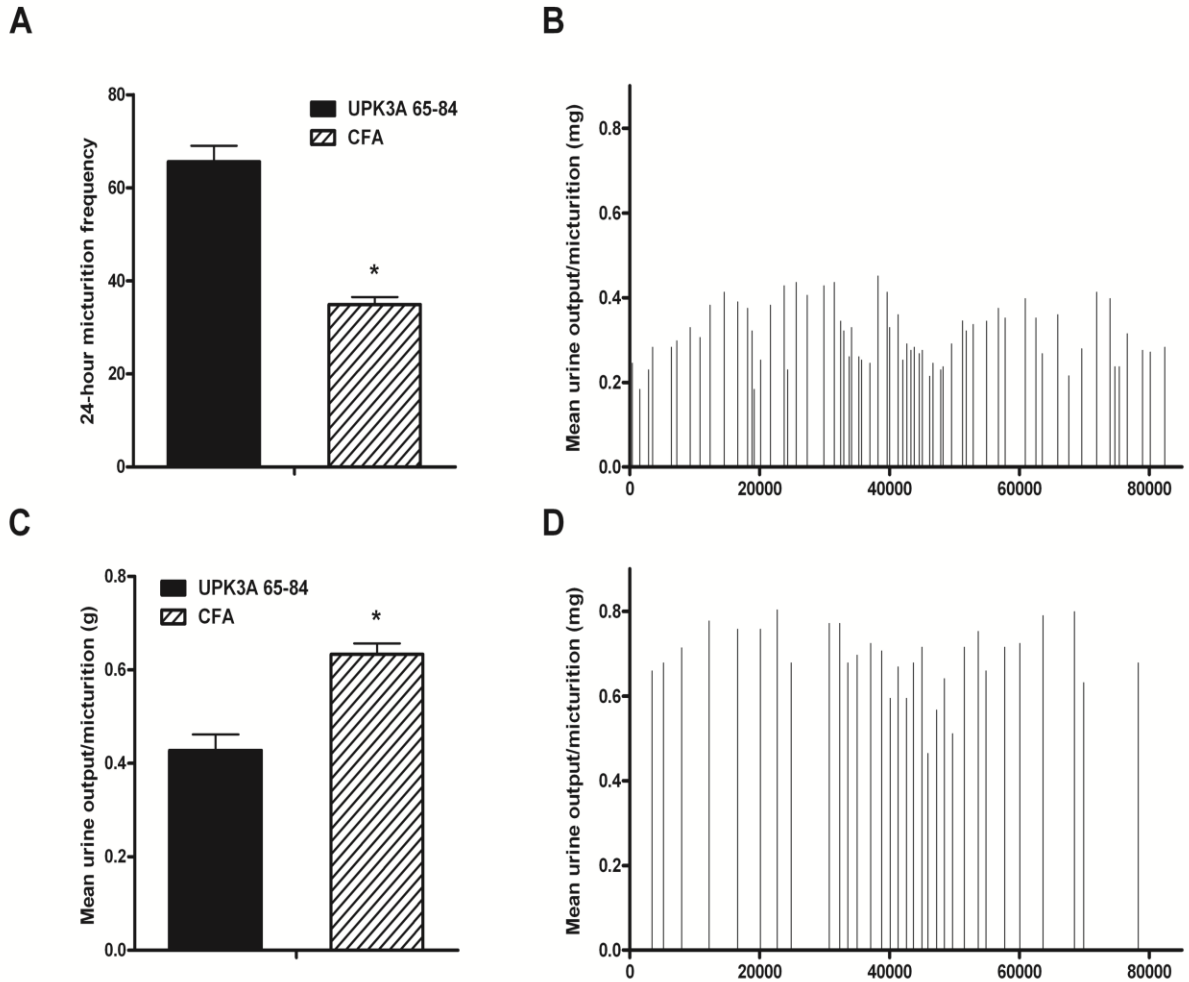


**Figure 7. Bladder Specific Inflammatory Response.** Real-time-PCR analysis showed significantly elevated ( $P < 0.05$  in all cases) expression levels of IFN $\gamma$ , TNF $\alpha$ , IL-1 $\beta$ , and IL-17A in the bladder but not in the kidney, ovary, uterus, and liver of mice immunized with UPK3A 65-84 compared to tissues taken from age- and sex-matched naive mice or control mice immunized with CFA. Error bars show  $\pm$ SE.

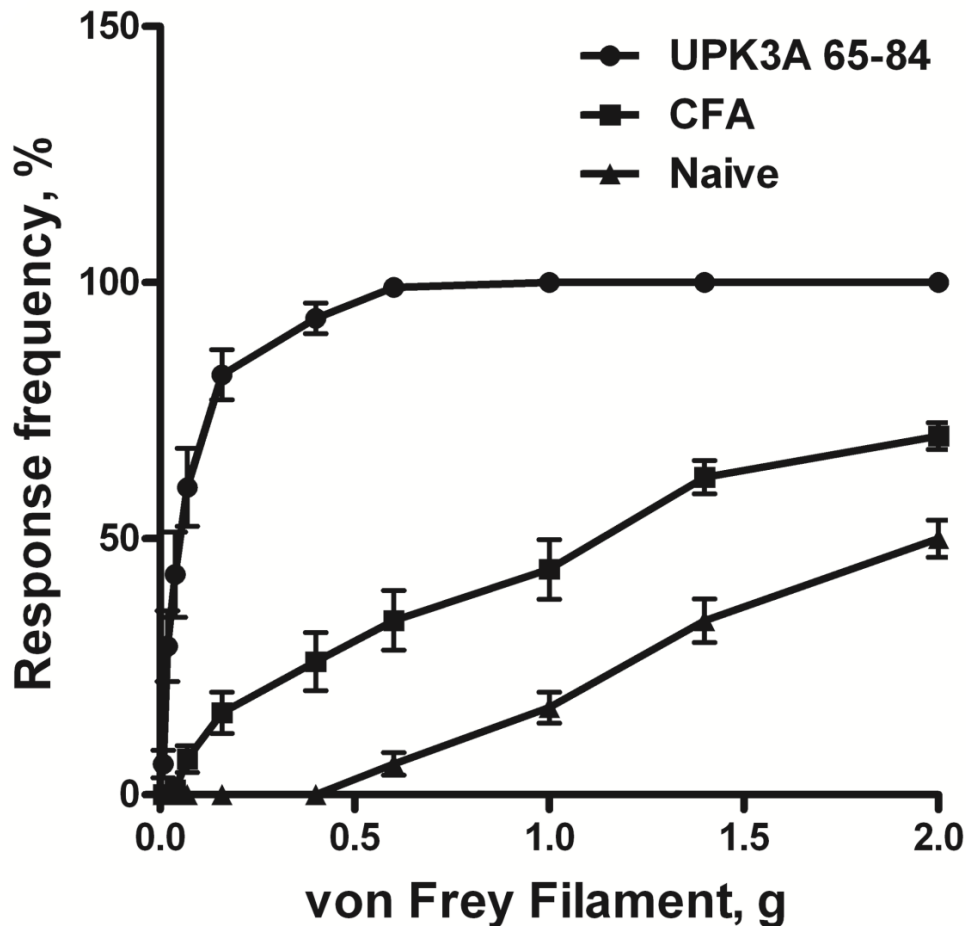


### **3.7. Bladder Dysfunction, IC/PBS phenotypical characterization following active immunization with UPK3A 65-84**

To find out the whether UPK3A 65-84 were able to induce an experimental autoimmune cystitis, female BALB/c mice were immunized with this peptide and bladder dysfunction by FVC and pelvic pain were tested 5 weeks later. Functional analysis showed that 5 weeks after immunization with UPK3A 65-84, BALB/c female mice showed significantly increased micturition frequencies (Figure 8a) and significantly decreased mean urine outputs per micturition (Figure 8c) ( $P < 0.0001$ ). Figure 8b-d-shows the urine production and its frequency of an individual immunized mouse with UPK3A 65-84 and immunized mice with CFA respectively. This observation correlates the phenotypical features, which are urinary frequency and urgency, seen in human IC/PBS. The pelvic pain assessment with the most popular non-invasive von Frey Filaments on the pelvic region revealed that immunized mice with UPK3A 65-84 developed pelvic pain with the increase response to noxious stimulus as the meaning of decreased threshold of pain response on the pelvic region as an indicator of referred pain of bladder organ( $p < 0.05$ )(Figure 9).



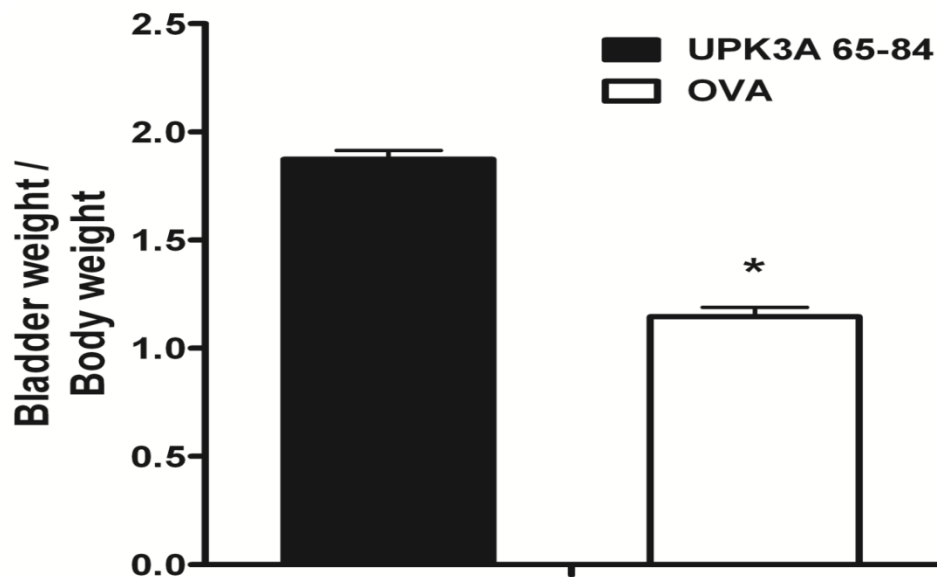
**Figure 8. Bladder Dysfunction in Mice Immunized with UPK3A 65-84.** (A) 24 hour micturition frequencies were significantly higher 5 weeks after immunization of BALB/c female mice with UPK3A 65-84 compared to control mice immunized with CFA. (B) Inversely, urine output/micturition was significantly lower in mice immunized with UPK3A 65-84 compared to control mice immunized with CFA.\* indicates the P value<0.0001 significantly difference. Error bars show±SE. (C-D) The representative graphs show the urine production and its frequency of an individual immunized mouse with UPK3A 65-84 and immunized mice with CFA.



**Figure 9. Increased Pelvic Pain Response in EAC.** The referred hyperalgesia was examined with von Frey filaments applied to the pelvic region (suprapubic) 5 week after immunization (n=10). The behaviors that were considered to be as a positive response are: 1) sharp withdrawal of the abdomen; 2) instant licking and scratching; 3) jumping. The response frequency was calculated for each filament as the percentage of positive responses out of 10 stimuli. Each filament was performed for 1-3 seconds with 5-8 seconds intervals between each stimulus of total 10 times. Immunized mice with UPK3A 65-84 developed pelvic pain with the elevated response to stimulus as the meaning of decreased threshold of pain response on the pelvic region as an indicator of referred pain of bladder organ( $p < 0.05$ ) compared to control CFA and naïve(baseline) control.

### 3.8. Immunization with UPK3A 65-84 Increases Bladder Weights.

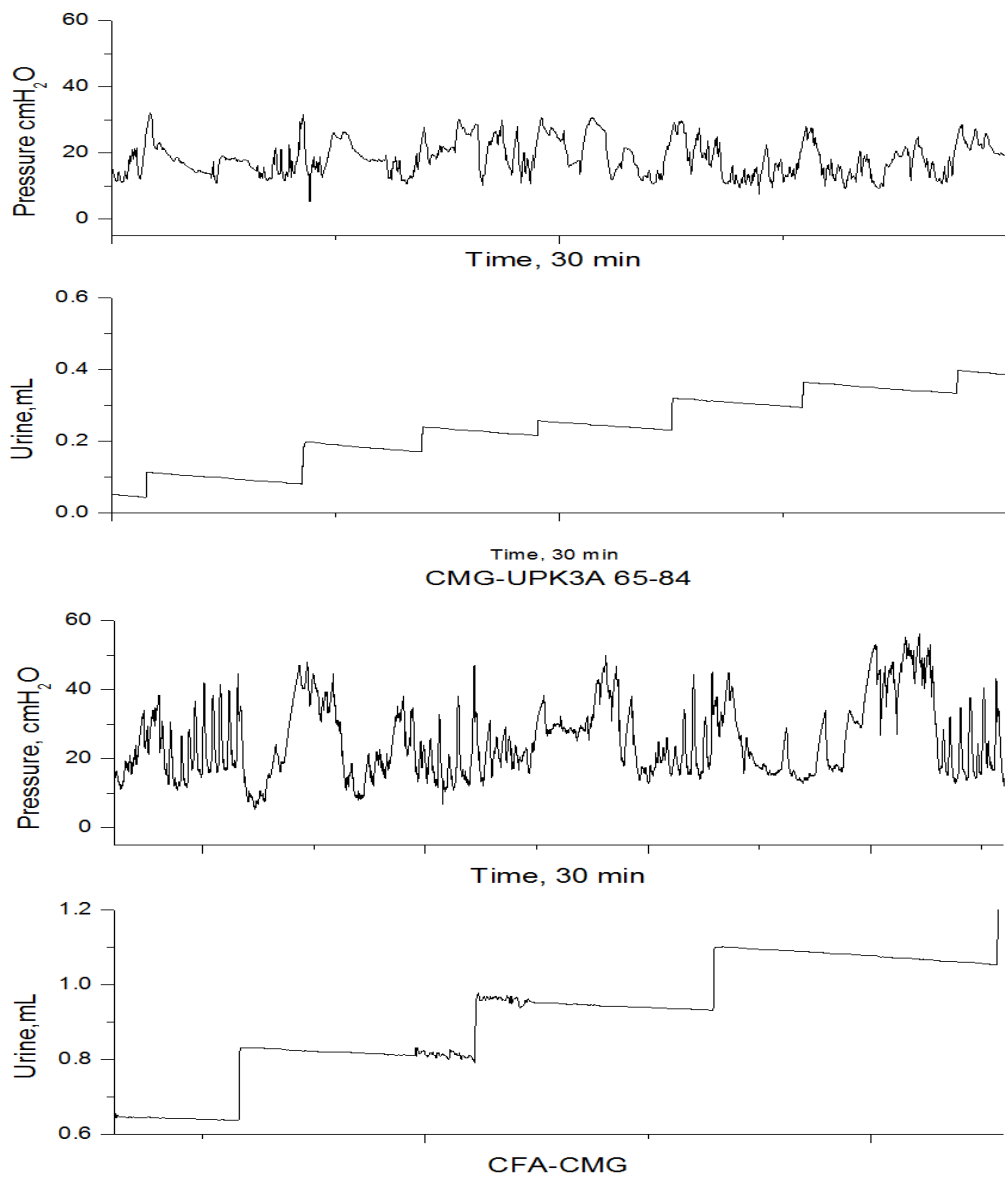
5 five after immunization the bladder weights were measured from BALB/c mice immunized with UPK3A 65-84 or CFA alone. UPK3A 65-84 immunized mice showed significantly increased ( $P<0.001$ ) bladder weight (mg)/body weight (mg) ratios, a simple but reliable measure of organ inflammation (Figure 10). We observably confirm that active immunization with UPK3A 65-84 peptide is capable of inducing autoimmune cystitis in BALB/c female mice.



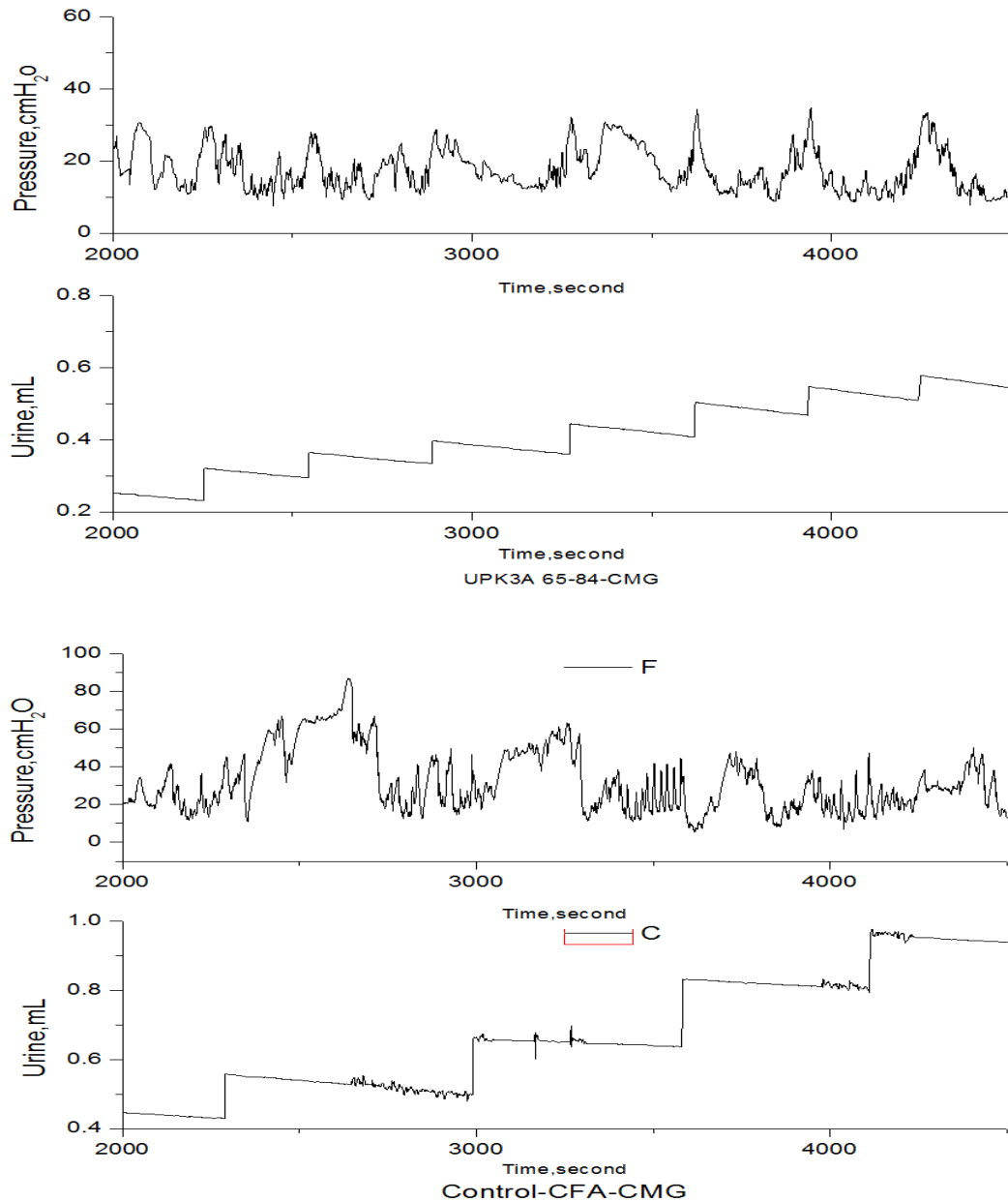
**Figure 10. Immunization with UPK3A 65-84 Increases Bladder Weights.** Bladder weight (mg)/body weight (mg) ratios were significantly higher ( $P<0.001$ ) in mice immunized with UPK3A 65-84 compared to controls. Error bars show  $\pm$ SE.\* indicates  $P$  value $<0.05$ .

### **3.9. Cystometrogram Analysis of Bladder Dysfunction in EAC Mice**

The bladder threshold pressure, peak voiding pressure, resting pressure, compliance, and mean inter contractile interval were measured during micturition. Figure 11 and 12 shows the representative CMG data of UPK3A 65-84 immunized mice and CFA alone. Table III shows the CMG analyzed data. Peak voiding pressure which is the highest pressure throughout micturition was decreased significantly in UPK3A 65-84 immunized mice after 5 weeks immunization compared to CFA injected group. Threshold pressure, which is the pressure at the beginning of micturition phase, was also decreased significantly compared to control group. Resting pressure, which is the pressure after micturition, was significantly decreased in UPK3A 65-84 immunized mice. The significant decreased bladder compliance, which is calculated by dividing the voided volume by the variation in bladder pressure throughout the voiding phase, was observed in UPK3A 65-84 immunized mice. The mean intercontractile intervals were decreased in EAC mice compared to CFA injected control group.



**Figure 11. Representative Cystometrogram for EAC and Control Group.** Representative images of Cystometrogram of UPK3A 65-84 immunized mice and CFA alone 5 Week after Immunization. Saline Infusion rate mL/s=0.000277778 or Infusion rate mL/hr=1.



**Figure 12. Representative Cystometrogram of EAC vs Control.** Representative images of Cystometrogram of UPK3A 65-84 immunized mice and CFA alone 5 Week after Immunization. Infusion rate mL/s=0.000277778 or Infusion rate mL/hr=1.

### Cystometry Results of EAC mice

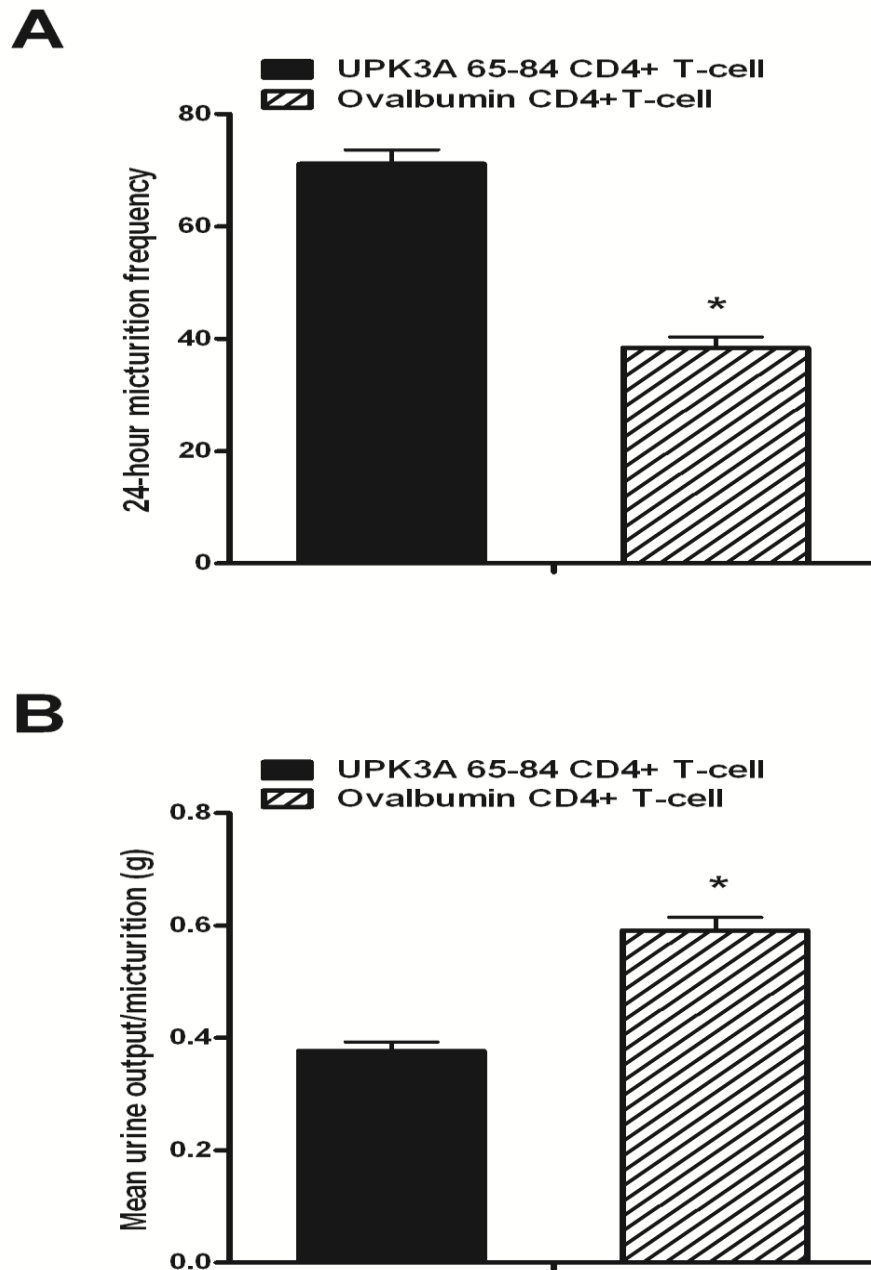
	Resting Pressure, cmH <sub>2</sub> O			
	Mean	SD	SEM	P value
<b>UPK3A 65-84 Immunized Group</b>	<b>10.84796</b>	<b>3.05511</b>	<b>0.3168</b>	0.032
Control-CFA Group	12.02088	2.54372	0.43624	
Peak Voiding Pressure, cmH <sub>2</sub> O				
<b>UPK3A 65-84 Immunized Group</b>	<b>39.86806</b>	<b>11.2975</b>	<b>1.1715</b>	0.001
Control-CFA Group	46.57529	5.94939	1.02031	
Threshold Pressure, cmH <sub>2</sub> O				
<b>UPK3A 65-84 Immunized Group</b>	<b>22.86892</b>	<b>5.40327</b>	<b>0.56029</b>	0.00007
Control-CFA Group	27.53118	6.45137	1.1064	
Bladder Capacity, mL				
<b>UPK3A 65-84 Immunized Group</b>	<b>0.0651</b>	<b>0.03558</b>	<b>0.00388</b>	0.00001
Control-CFA Group	0.14652	0.07024	0.01282	
Compliance, mL/cmH <sub>2</sub> O				
<b>UPK3A 65-84 Immunized Group</b>	<b>0.00575</b>	<b>0.00331</b>	<b>3.61E-04</b>	0.0005
Control-CFA Group	0.01104	0.00734	0.00134	
Mean Intercontractile intervals, second				
<b>UPK3A 65-84 Immunized Group</b>	<b>234.35646</b>	<b>128.07065</b>	<b>13.97365</b>	0.0000007
Control-CFA Group	534.15138	254.64703	47.28677	

**Table 3. Comparisons of Cystometry Results.** Cystometry results of EAC mice.5 week after immunization conscious CMG was performed. Bladder resting pressure, bladder threshold pressure, peak voiding pressure, bladder capacity, compliance and mean intercontractile intervals were analyzed on cystometry data of mice immunized with UPK3A 65-84(n=6), and mice immunized with CFA(n=5). Infusion rate mL/s=0.000277778 or Infusion rate mL/hr=1.

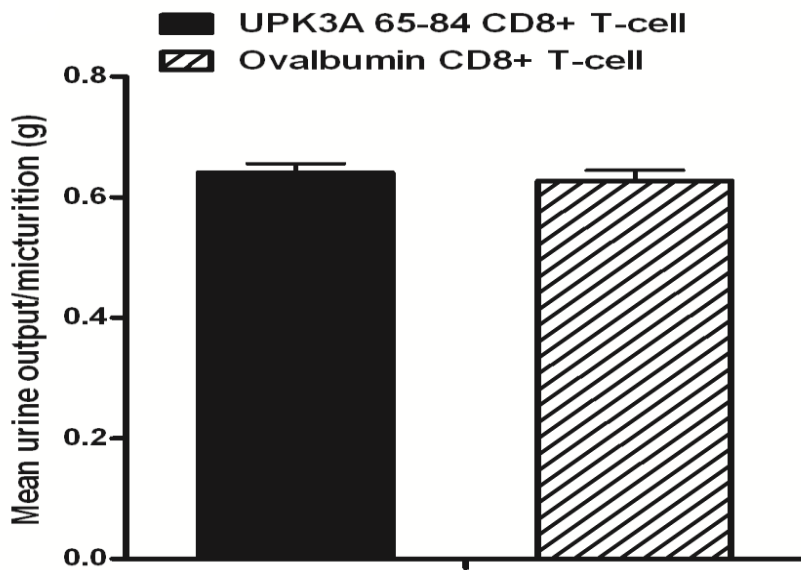
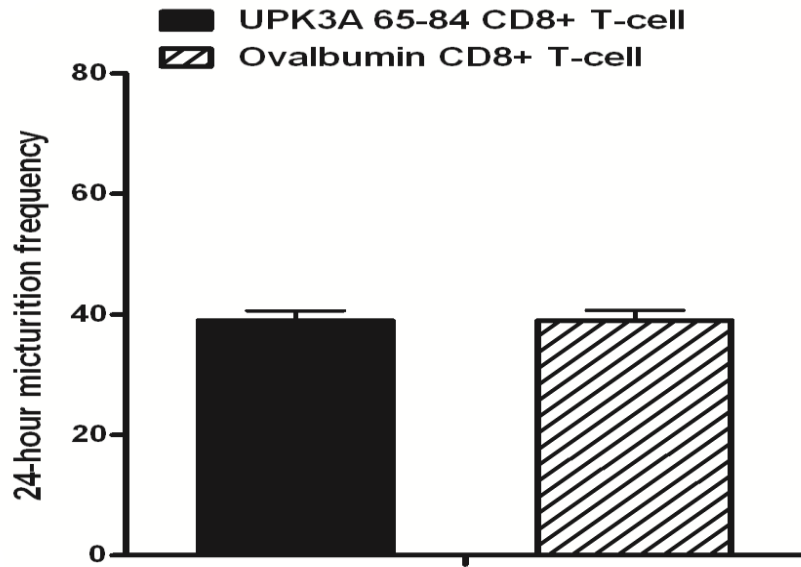


### **3.10. IC/PBS phenotype occurred following adoptive transfer of CD4+ T-cells from UPK3A 65-84 Primed Mice.**

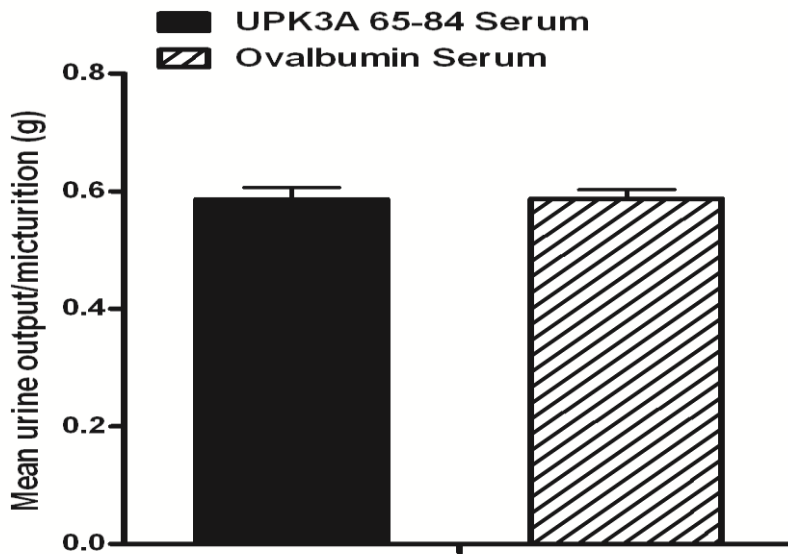
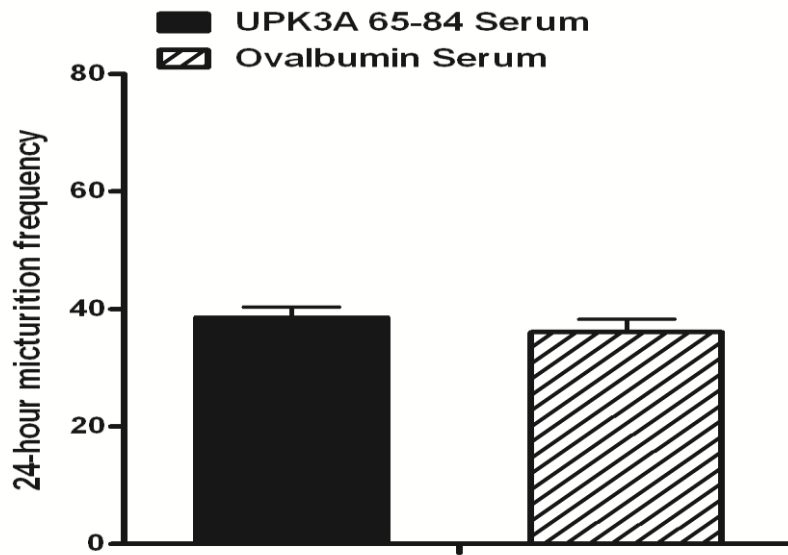
We determined EAC (transferring the immunologic functionality and features into naïve host) induction capability of adoptive transferring of isolated CD4+ T cells, CD8+ T cell, B cells, and serum from immunized mice into naïve BALB/c mice. 10 days after immunization with UPK3A 65-84 peptide or OVA, CD4+ and CD8+ T cells were isolated and enhanced proliferation with the immunogens, and transferred into naïve recipients. After 20 days of adoptive transfer, the phenotype of EAC bladder dysfunction tested with FVC showed that 24 hour micturition frequencies were significantly higher in mice with peptide specific CD4+ T cells-transferred compared to control-OVA induced T-cell transferred. Inversely, urine output/micturition was significantly lower in mice with peptide specific CD4+ T cells-transferred compared to control mice (Figure 13a-b). However, no phenotypical signs of IC/PBS occurred in FVC measurements after transferring the peptide induced CD8+ T cells into naïve BALB/c mice recipients compared to control OVA- mediated CD8+ T cells transferred (Figure 14). Similarly, the transfer of collected sera from 5 weeks after immunized mice with UPK3A 65-84 or Ovalbumin, no micturition abnormalities associated to EAC phenotype observed compared to control (Figure 15). The passive transfer of B-Cells from immunized mice with UPK3A 65-84 did not show differences in voiding frequency and micturition output/voiding compared to control(P values 0.77, and 1 respectively)(Figure 16).



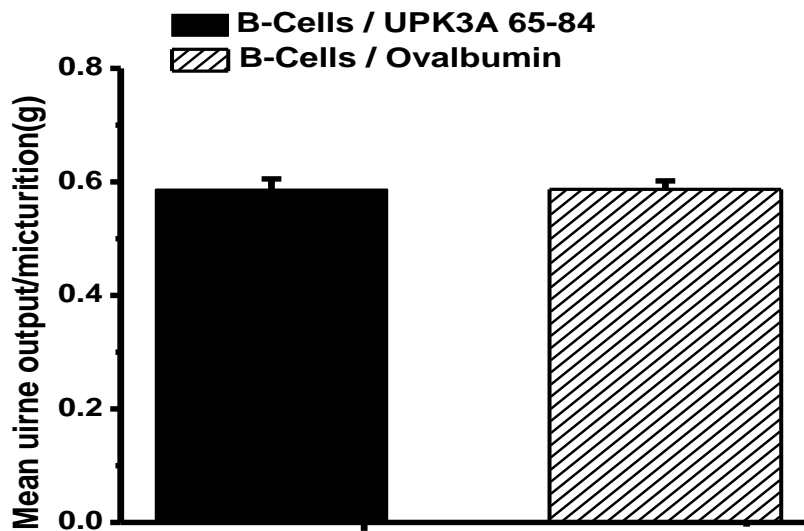
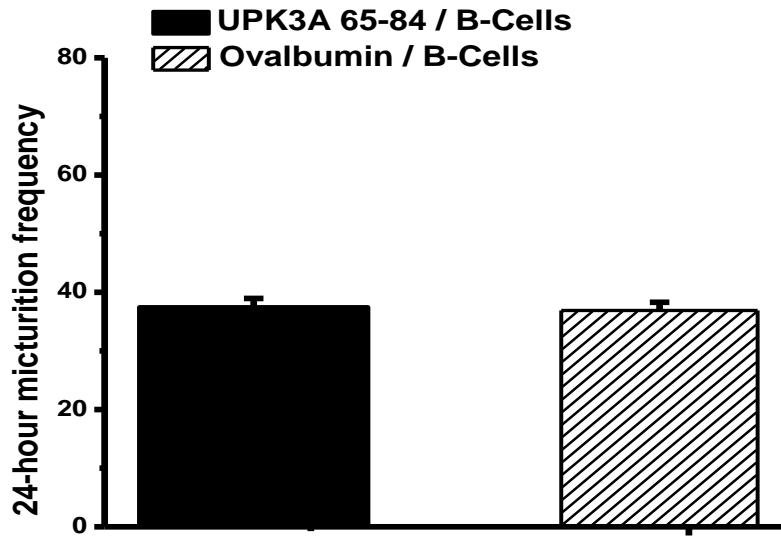
**Figure 13. Adoptive Transfer of enriched CD4+T cells developed EAC.** The phenotype of EAC development was tested with FVC after 20 days of adoptive transfer (A) Bladder dysfunction resembling IC/PBS phenotype in mice with peptide specific CD4+ T cells-transferred showed that 24 hour micturition frequencies were significantly higher compared to control-OVA induced T-cell transferred(n=10). (B) Inversely, urine output/micturition was significantly lower in mice with peptide specific CD4+ T cells-transferred compared to control mice.



**Figure 14. Adoptive Transfer of CD8+T cells, no Phenotypical Changes in FVC.** No phenotypical signs of IC/PBS occurred in FVC measurements after transferring the peptide induced CD8+ T cells into naïve BALB/c mice recipients compared to control OVA- mediated CD8+ T cells transfer.



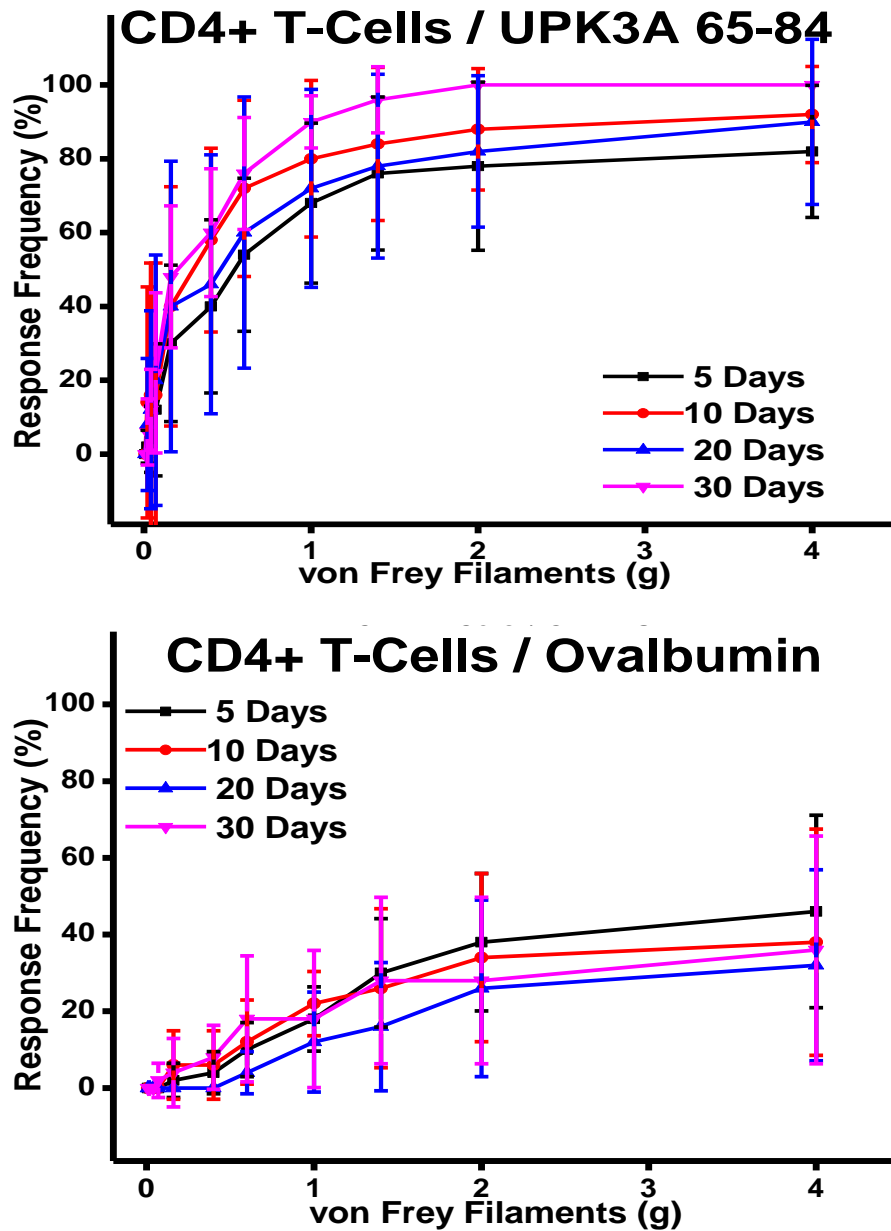
**Figure 15. Sera Transfer from Immunized Mice to Naive Host.** 5 weeks after immunization collected and pooled sera from immunized mice with UPK3A 65-84 or Ovalbumin, transferred into naïve BALB/c recipients and the 20 days later FVC measured showed no differences between groups.



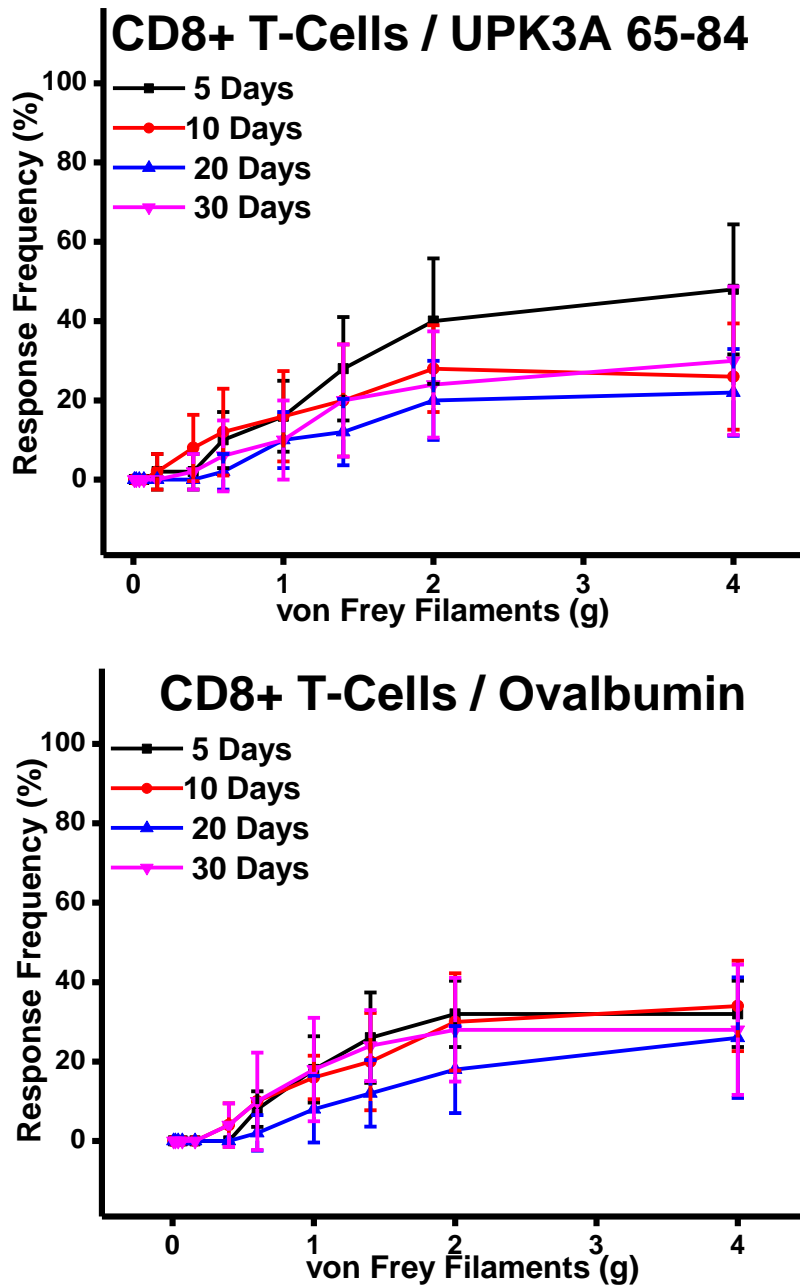
**Figure 16. Passive Transfer of B-cells from Mice Immunized with UPK3A 65-84 to Naïve Recipient.** 5 weeks after immunization with UPK3A 65-84 or Ovalbumin, the purified B-cells transferred into naïve BALB/c recipients and the 20 days later FVC measurement showed no differences between groups.

### **3.11. Pelvic Pain Response Following Adoptive Transfer of CD4+ T-cells from UPK3A 65-84 Primed Mice.**

Pelvic pain which is the most prominent phenotype of IC/PBS, was examined with von Frey filaments by administration onto the pelvic region (suprapubic) at day-5-10-20-30 after passive transfer of the UPK3A 65-84 primed CD4+ and CD8+ T cells, B cells and sera comparing with OVA primed CD4+ and CD8+ T cells, and sera transferred group, into naïve BALB/c recipients. UPK3A 65-84 primed CD4+ T cells revealed increase pain response to stimulus compared to control mice transferred with CD4+ T cells specific for OVA, as the indicator of decreased threshold of referred pain of bladder organ on the pelvic region (Figure 17). On the other hand, the passive transfer of peptide induced CD8+ T cells into naïve BALB/c mice recipients showed no difference in pain assessment compared to control OVA- mediated CD8+ T cells transfer (Figure 18). The pooled sera taken from 5 weeks after immunization of mice with each immunogens were injected into naïve recipient BALB/c female hosts. The pain measurements at 5, 10, 20, 30 days were not different compared to control groups (Figure 19). The passive transfer of B-Cells from immunized mice with UPK3A 65-84 did not show differences in pelvic pain responses compared to control groups (Figure 20).

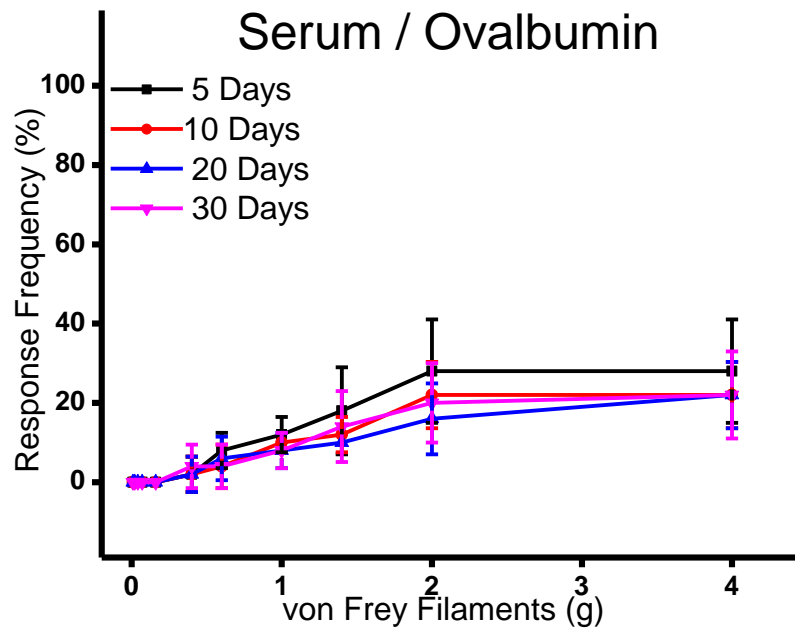
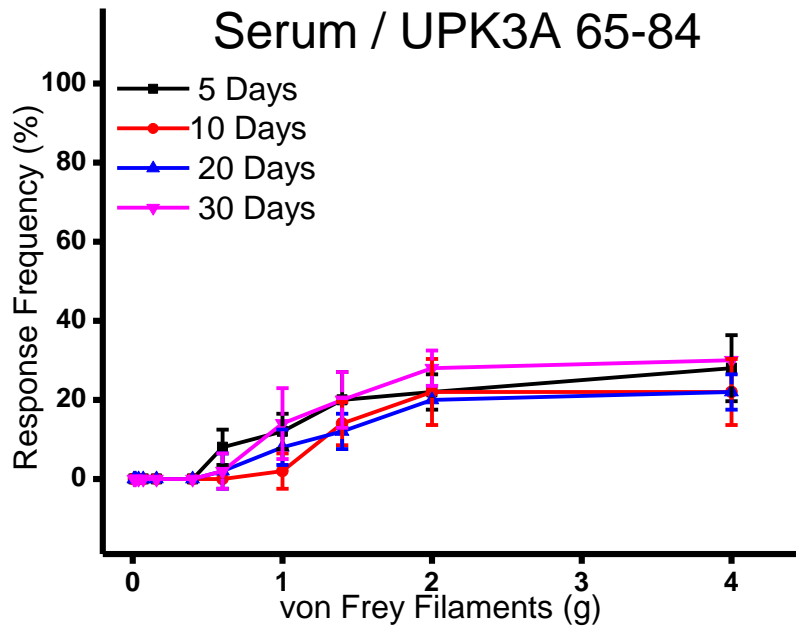


**Figure 17. Adoptive Transfer of enriched CD4+ T cells from UPK3A 65-84 immunized mice revealed increase pelvic pain response.** Pelvic pain which is the most prominent phenotype of IC/PBS, was examined with von Frey filaments applied to the pelvic region (suprapubic) at day 5, 10, 20, and 30 after transferring the UPK3A 65-84 primed CD4+ and CD8+ T cells and serum comparing with OVA primed CD4+ and CD8+ T cells, and sera transferred group into naïve recipients(n=10). Adoptive transfer of UPK3A 65-84 primed CD4+ T cells revealed increase response to stimulus after 5, 10, 20 and 30 days, compared to control mice transferred with CD4+ T cells specific for OVA, as the indicator of decreased threshold of referred pain of bladder organ on the pelvic region.

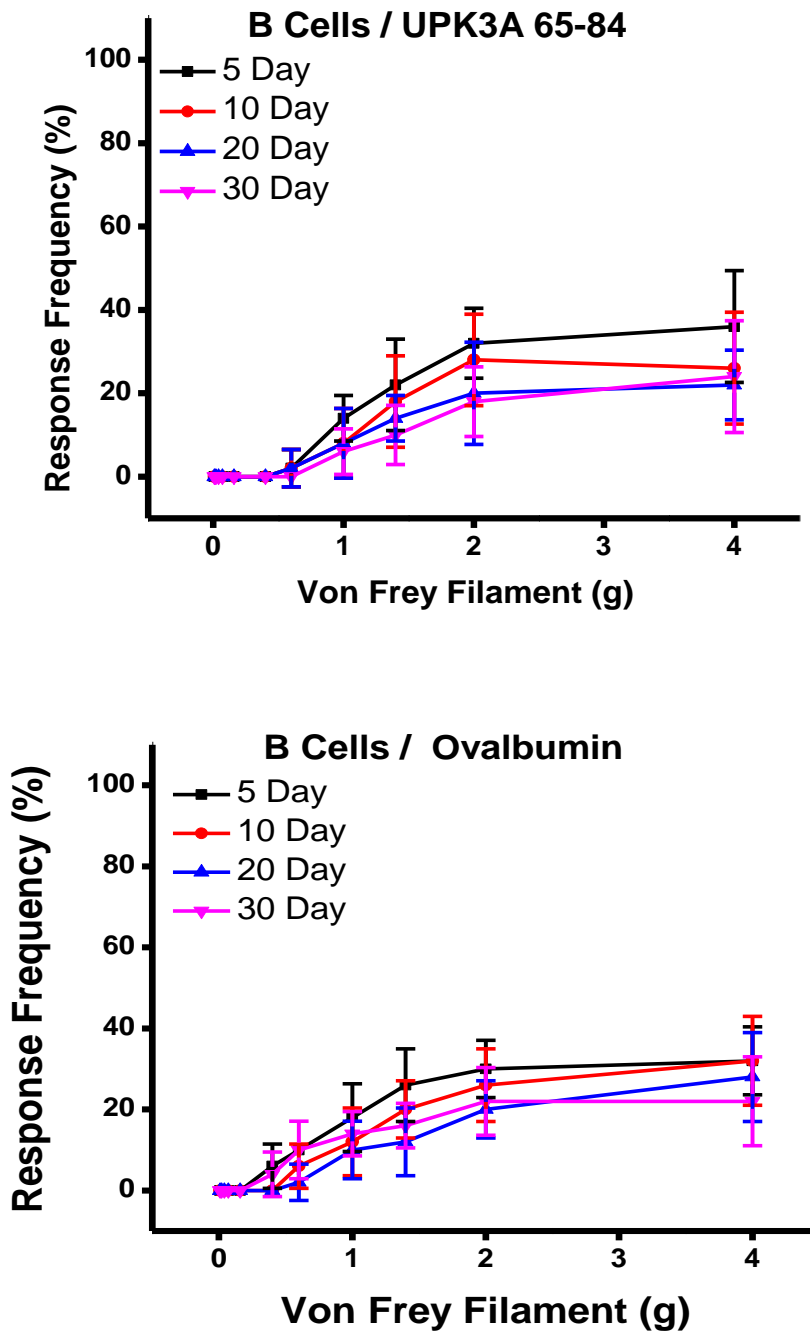


**Figure 18. There is no pelvic pain response after adoptive transfer of CD8+ T cells.** The pelvic pain phenotype of IC/PBS was not occurred by testing von Frey filaments on the referred area of bladder pain (suprapubic) at day 5, 10, 20, and 30, after transferring the peptide induced CD8+ T cells into naïve BALB/c mice recipients compared to control OVA- mediated CD8+ T cells transfer.





**Figure 19.** There is no pelvic pain response after sera transfer from mice immunized with UPK3A 65-84. The sera samples taken from 5 weeks after immunization with each immunogenic peptide (Ovalbumin and UPK3A 65-84), the collected and pooled sera were injected [3 injections of 200  $\mu$ l per mice, i.v/i.p injection, every other day] into naive recipient BALB/c female hosts for determining the ability to mediate EAC. After the 5, 10, 20, 30 days pain measurements, no difference was observed to stimulus in transferred groups compared to control groups.



**Figure 20. Passive Transfer of B-cells from mice immunized with UPK3A 65-84 into naïve host did not developed pelvic pain response.** Passive Transfer of B-cells from UPK3A 65-84 immunized mice into naïve BALB/c host did not revealed pelvic pain response by testing von Frey filaments on the referred area of bladder pain at day 5, 10, 20, and 30 compared to control groups.

Thus, the passive transfer of CD4<sup>+</sup> T cells, isolated from LNCs of UPK 3A 65-84 immunized mice, developed EAC in naïve host BALB/c mice showing the phenotypical features of IC/PBS; frequent urination, decrease output per micturition and increase pelvic pain response to von Frey monofilament stimulus.

## **CHAPTER IV**

### **DISCUSSION**

Our study reveals that an UPK3A peptide specific CD4<sup>+</sup> T-cell autoimmunity mediates painful bladder dysfunction in mice that mimics human IC/PBS. The pathophysiology of IC/PBS remains puzzling. Advancement in addressing IC/PBS has been overwhelmingly slow due to a lack of understanding of the underlying pathophysiology and lack of markers for the disease. The current approaches in our scientific area mostly focus on merge clinical practice and translational thus stressing the significance of translational models. Almost 20 animal models have been scrutinized for two decades which resembles somewhat IC/PBS phenotype (Westropp and Buffington 2002). One of the limitations in IC/PBS research has been the lack of an appropriate animal model. The NIH (National Institutes of Health) has launched a number of initiatives in both clinical and basic science of IC/PBS over the past 15 years without making a meaningful impact. Suffice it to say that IC/PBS remains one of the top priorities for NIH-NIDDK as a disease that could benefit from a realistic animal model and translational research.

The earlier animal models have been developed through different approaches such as inducing inflammation by transurethral application of irritant or immune stimulants into urinary bladder, systematic and environmentally caused irritations (e.g., acetone, glycerol, mustard oil, acetic acid, cyclophosphamide [CYP]), autoimmune strategies (bladder homogenate, URO-OVA or URO-OVA/OT-I, UPK2 protein)(Liu, Evanoff et al. 2007; Altuntas, Daneshgari et al. 2008; Lin, Liu et al. 2008; Liu, Deyoung et al. 2008; Rudick, Schaeffer et al. 2008; Altuntas, Daneshgari et al. 2011). Transgenic EAC model of URO-OVA mice fabricate a membrane structure of Antigen-Ovalbumin (OVA) like a self-antigen on the urothelium derived by Uroplakin II gene promoter and then the bladder autoimmune cystitis was generated through the transfer of OVA-specific OT-I CD8<sup>+</sup> T-cells to this mouse (Liu, Evanoff et al. 2007; Liu, Deyoung et al. 2008). The disadvantage of this model is that OVA is not endogenous antigen of bladder and the urodynamic assessment of the bladder or bladder dysfunction, and pelvic pain associated to IC/PBS phenotype have not been characterized and demonstrated. Even though CYP- employed cystitis model is well-described and broadly study for chronic cystitis, the pathogenesis does not fit the IC/PBS of human(Vera, Iczkowski et al. 2008). A spontaneous model of IC/PBS was described in feline(Buffington 2004), however this was not applied extensively in scientific community due to cost and handling problems.

Autoimmunity of IC/PBS has been suspecting due to concomitant occurrence with some autoimmune disorders for instance; systemic lupus erythematosis(SLE), rheumatoid arthritis, ulcerative colitis, thyroiditis, Sjögren syndrome and fibromyalgia syndrome (Keay, Zhang et al. 1997; Ochs 1997; Lorenzo Gomez and Gomez Castro

2004; van de Merwe 2007). And also the relatively high occurrence of antibodies in patients with IC (van de Merwe 2007), the increase demonstration of CD4 and CD8 T-Cells, B cells, plasma cells(MacDermott, Miller et al. 1991; Christmas 1994), and inappropriate expression of HLA-DR in the bladder biopsies of IC patients(Christmas and Bottazzo 1992).

The strategy of mounting an inflammatory T-cell response against carefully selected antigens that are expressed only in the targeted organ has utilized to the establishment of practical experimental autoimmune animal models for studying a variety of human diseases including autoimmune encephalomyelitis(EAE)-Multiple Sclerosis (Tuohy, Lu et al. 1989; Yu, Johnson et al. 1996), autoimmune inner ear disease (Solares, Edling et al. 2004), autoimmune oophoritis -premature ovarian failure(Altuntas, Johnson et al. 2006) , and autoimmune myocarditis-dilated cardiomyopathy (Jane-wit, Yu et al. 2002).

The similar strategies mounting an inflammatory T cell response to targeted tissues were reported in the employment of bladder homogenate and bladder specific protein UPK2 (Lin, Liu et al. 2008), (Altuntas, Daneshgari et al. 2011) showing induction of autoimmune mediated EAC in SWXJ mice resembling the human IC urodynamically. The disadvantage of immunization with bladder homogenate is the possible induction of non-specific and systemic immune reaction alongside the bladder tissue because of the composition of bladder non-specific or specific antigens. The IC mice model immunization with bladder specific recombinant UPK2 protein mice exhibited bladder specific T cell mediated autoimmunity and significant proof bladder dysfunction in regard to increased frequency of urination and decrease urine output per voiding (Lin, Liu

et al. 2008; Altuntas, Daneshgari et al. 2011); however, this EAC mouse model was not revealed pelvic pain response to noxious stimulus with von Frey Filaments, that missing one of the major symptoms of IC/PBS phenotypes. These observed phenotypical characteristics and urodynamic abnormalities in those mice models were somewhat similar with IC/PBS symptoms seen in human, thus we aimed to create more specific autoimmunity targeting a bladder specific protein, which could induce all major phenotypical features of IC/PBS, especially the pelvic pain phenotype. In view of that, it is necessary for an animal model that merges all phenotypical properties as observed in human IC/PBS together with frequency, urgency, pelvic pain along with bladder specificity and high induction rate of IC/PBS phenotype.

In our present study, we evaluated immunogenicity of the peptides derived from bladder specific Uroplakin proteins in different mice strains. We found that a 20-mer peptide from UPK3A is highly immunogenic and specifically elicits CD4<sup>+</sup> T-cell mediated Th1 immune response in BALB/c mice inducing EAC along with bladder confined inflammation. We verified inflammation in bladder by revealing the increase expressions of proinflammatory cytokines and the presence of clusters of T-cells in the bladder following immunization. Moreover, the significantly increased bladder weight to body weight ratios are basic and simple indicator for inflammation. These findings point out that immunization of BALB/c mice with UPK3A 65-84 incites an organ specific autoimmune disorder described through inflammation restricted to the bladder that continually directs to bladder dysfunction parallel to that examined in Uroplakin III or II-null mice (Aboushwareb, Zho et al. 2007). Subsequently, we tested bladder function and pelvic pain response whether active immunization with UPK3A 65-84 can induce or

initiate an IC/PBS phenotype. The phenotypical characteristics of our current model were seen 5wk after active immunization with UPK3A 65-84. The mice immunized with UPK3A 65-84 showed significantly elevated urinary frequencies, decreased urine outputs per void, and increased pelvic pain response, which resemble all three major symptoms of IC/PBS. Moreover, decrease intercontractile intervals and bladder compliance that were observed on CMG measurement in EAC model, also correlate with the physiological alterations seen the human IC/PBS. Correspondingly, the passive or adoptive transfer of UPK3A 65-84 stimulated CD4+ T-cell mediates EAC in BALB/c naïve recipients manifesting significantly detectable pelvic pain response, increased micturition frequency, and decreased output per micturition, similar to the symptomatology observed in IC/PBS. Our data indicates that the bladder dysfunction and increase pelvic pain response occurring in EAC is due to CD+4 T-cell mediated autoimmune inflammation of the bladder tissue. We elucidated a potential move toward to examine referred hyperalgesia by von Frey Filaments on pelvic region (Laird, Martinez-Caro et al. 2001). 5 weeks after active immunization and 5, 10, 20, 30 days after the adoptive transfer of CD+4 T-cells, for pelvic and urinary bladder pain assessment, we found an enhanced response to a painful stimulus and a painful reaction to a normal stimulus.

The significance of our model is that just one single peptide, UPK3A 65-84, induces T-Cell dependent autoimmune mediated EAC with higher bladder specificity, accurately reflecting the urodynamic symptoms and chronic pelvic pain of IC/PBS phenotype. The further characterization of the pelvic pain mechanism in this model is needed to investigate. The role of mast cells in the induction of cystitis pain has already



revealed (Rudick, Bryce et al. 2008; Rudick, Schaeffer et al. 2009). For future studies the mast cells and T-cells involvement in pelvic pain development in IC/PBS model could be investigated.

In this mouse model, we clearly characterized and showed a targeted autoimmunity against bladder specific protein, UPK IIIA, induces a new type of EAC. This bladder specific autoimmunity can be used in an actively way to prevent the development of bladder cancers and retardation of existing tumors. It is already known that the highly expressed antigens in tumor are appropriate target for cancer immunotherapies. It was also suggested that the organ or tissue specific antigens that are produced through normal tissue or their originated cancer cells could be targeted for cancer vaccination (Jaini, Kesaraju et al. 2010; Tuohy 2010; Altuntas, Jaini et al. 2012). It was proposed that peripheral self-tolerance mechanisms possibly hinder the endogenous immune reaction to cancer, and it is essential to breakdown to elicit clinically applicable antitumor response (Dudley, Wunderlich et al. 2002; Dudley, Wunderlich et al. 2005). The effect of immunotherapy and autoimmunity regarding to tumor retardation and autoimmune reactivity to normal tissues were studied in some clinical immune-mediated treatments, and also in pre-clinical immunotherapy models (Huber and Wolfel 2004; Dudley, Wunderlich et al. 2005) (Overwijk, Lee et al. 1999; Bettinotti, Panelli et al. 2003; Phan, Yang et al. 2003). It was tested in mice that the targeted autoimmune response to organ specific proteins can hinder or treat tumor development in that organ or tissues. The study in autoimmune mice models, the tumor development of autochthonous ovarian granulosa cell tumors in SJL.AMH-SV40Tag transgenic mice was hindered in immunized group with Inhibin alpha 215-234 peptide and also, the therapeutically

vaccinated group that had ovarian granulosa cell tumors showed significantly reduction of tumor growth(Altuntas, Jaini et al. 2012). In another study, breast autoimmunity was developed immunization with the recombinant mouse mammary-specific differentiation protein antigen ( $\alpha$ -lactalbumin), and assessed the effectiveness of immunization with  $\alpha$ -lactalbumin on cancer development in prophylactic and therapeutic approaches. It was demonstrated that immunoreactivity against alpha-lactalbumin resulted in significant prevention and treatment against autochthonous tumor development in breast cancer mouse models, and against 4T1 transplantable breast tumors in BALB/c mice (Jaini, Kesaraju et al. 2010). Recently, the Tumor vaccine development trials with immunogenic cancer/testis (CT) antigens produced in normal gametogenic tissues and in various cancers, MAGE-A3 (melanoma antigen A3) and NY-ESO-1 have been conducted, and suggested that these antigens could be used for antigen-specific adoptive T-cell transfer for the cancer immunomodulation (Parmigiani, Bettoni et al. 2006; Caballero and Chen 2009). NCI (National Cancer Institute) Researchers revealed the success of immunotherapy method for melanoma treatment showing significant shrinkage in the tumor size of melanoma patients who have progressive melanoma unresponsive to former treatments and autoimmunity targeted against normal melanocytes was detected in 75% of the adoptively T-cell treated patients who showed tumor inhibition (Dudley, Wunderlich et al. 2005).

Uroplakins (UPKI, II, and III) are integral membrane proteins uroepithelium (Kong, Deng et al. 2004) vastly and specifically produced in bladder tissue. Uroplakins might be effective as an anti-cancer vaccine development for targeting an autoimmune attack against bladder cancers. The expression of UPK III bladder cancer were showed

that there is 60% (21/35) in the primary tumors and 53% in (17/32) the metastatic tumor of human urothelial carcinomas (Kaufmann, Volmerig et al. 2000). Several studies have validated the stable expression of UPKII in human bladder cancer cell lines (Wu, Kakehi et al. 2005). UPKII promoter driven expressions of SV40 led urothelium cancer in the bladder of transgenic mouse (Saban, Towner et al. 2007). It was suggested that Uroplakins are also able to be suitable for creating tissue specific vectors designed for bladder cancer gene therapy (Zhu, Zhang et al. 2004; Zhu, Zhang et al. 2004).

Overall, we have established a bladder-specific autoimmunity of UPK3A 65-84 immunized mice with a high induction rate of EAC, and propose that our model is a remarkably practical model for future exploration of mechanistic event in pathogenesis and therapeutic intervention of IC/PBS and the facts gained in this model gives further vision to test different strategies for autoimmune mediated regulation of bladder cancer.

## REFERENCES

- Aarvak, T., M. Chabaud, et al. (1999). "IL-17 is produced by some proinflammatory Th1/Th0 cells but not by Th2 cells." Journal of immunology **162**(3): 1246-1251.
- Abbas, A. K., J. Lohr, et al. (2004). "T cell tolerance and autoimmunity." Autoimmunity reviews **3**(7-8): 471-475.
- Aboushwareb, T., G. Zho, et al. (2007). "Urodynamic characterization of mice lacking uroplakin II or III." Faseb Journal **21**(6): A1308-A1308.
- Aboushwareb, T., G. Zhou, et al. (2009). "Alterations in bladder function associated with urothelial defects in uroplakin II and IIIa knockout mice." Neurourology and urodynamics **28**(8): 1028-1033.
- Abrams, P., L. Cardozo, et al. (2002). "The standardisation of terminology of lower urinary tract function: report from the Standardisation Sub-committee of the International Continence Society." American journal of obstetrics and gynecology **187**(1): 116-126.
- Alagiri, M., S. Chottiner, et al. (1997). "Interstitial cystitis: unexplained associations with other chronic disease and pain syndromes." Urology **49**(5A Suppl): 52-57.
- Alarcon-Segovia, D., C. Abud-Mendoza, et al. (1984). "Involvement of the urinary bladder in systemic lupus erythematosus. A pathologic study." The Journal of rheumatology **11**(2): 208-210.
- Altuntas, C. Z., F. Daneshgari, et al. (2008). "Bladder dysfunction in mice with experimental autoimmune encephalomyelitis." Journal of neuroimmunology **203**(1): 58-63.

- Altuntas, C. Z., F. Daneshgari, et al. (2011). "Autoimmunity to Uroplakin II Causes Cystitis in Mice: A Novel Model of Interstitial Cystitis." European urology.
- Altuntas, C. Z., R. Jaini, et al. (2012). "Autoimmune mediated regulation of ovarian tumor growth." Gynecologic oncology **124**(1): 98-104.
- Altuntas, C. Z., J. M. Johnson, et al. (2006). "Autoimmune targeted disruption of the pituitary-ovarian axis causes premature ovarian failure." Journal of immunology **177**(3): 1988-1996.
- Amor, S., N. Groome, et al. (1994). "Identification of epitopes of myelin oligodendrocyte glycoprotein for the induction of experimental allergic encephalomyelitis in SJL and Biozzi AB/H mice." Journal of immunology **153**(10): 4349-4356.
- Anthony, D. D. and T. M. Haqqi (1999). "Collagen-induced arthritis in mice: an animal model to study the pathogenesis of rheumatoid arthritis." Clinical and experimental rheumatology **17**(2): 240-244.
- Apodaca, G. (2004). "The uroepithelium: not just a passive barrier." Traffic **5**(3): 117-128.
- Argade, S. P., C. Vanichsarn, et al. (2009). "Abnormal glycosylation of Tamm-Horsfall protein in patients with interstitial cystitis." BJU international **103**(8): 1085-1089.
- Babbitt, B. P., P. M. Allen, et al. (1985). "Binding of immunogenic peptides to Ia histocompatibility molecules." Nature **317**(6035): 359-361.
- Berry, S. H., M. N. Elliott, et al. (2011). "Prevalence of Symptoms of Bladder Pain Syndrome/Interstitial Cystitis Among Adult Females in the United States." Journal of Urology **186**(2): 540-544.

- Bettelli, E., Y. Carrier, et al. (2006). "Reciprocal developmental pathways for the generation of pathogenic effector TH17 and regulatory T cells." Nature **441**(7090): 235-238.
- Bettinotti, M. P., M. C. Panelli, et al. (2003). "Clinical and immunological evaluation of patients with metastatic melanoma undergoing immunization with the HLA-Cw\*0702-associated epitope Mage-A12:170-178." International journal of cancer. Journal international du cancer **105**(2): 210-216.
- Birder, L. A. (2011). "Urothelial signaling." Handbook of experimental pharmacology(202): 207-231.
- Birder, L. A. and W. C. de Groat (2007). "Mechanisms of disease: involvement of the urothelium in bladder dysfunction." Nature clinical practice. Urology **4**(1): 46-54.
- Birder, L. A., A. T. Hanna-Mitchell, et al. (2011). "Cystitis, co-morbid disorders and associated epithelial dysfunction." Neurourology and urodynamics **30**(5): 668-672.
- Bjorling, D. E., T. J. Jerde, et al. (1999). "Mast cells mediate the severity of experimental cystitis in mice." The Journal of urology **162**(1): 231-236.
- Bogart, L. M., S. H. Berry, et al. (2007). "Symptoms of interstitial cystitis, painful bladder syndrome and similar diseases in women: a systematic review." The Journal of urology **177**(2): 450-456.
- Born, M., I. Pahner, et al. (2003). "The maintenance of the permeability barrier of bladder facet cells requires a continuous fusion of discoid vesicles with the apical plasma membrane." European journal of cell biology **82**(7): 343-350.

- Boye, E., M. Morse, et al. (1979). "Immune complex-mediated interstitial cystitis as a major manifestation of systemic lupus erythematosus." Clinical immunology and immunopathology **13**(1): 67-76.
- Brower, V. (2004). "When the immune system goes on the attack." EMBO reports **5**(8): 757-760.
- Buffington, C. A. (2004). "Comorbidity of interstitial cystitis with other unexplained clinical conditions." The Journal of urology **172**(4 Pt 1): 1242-1248.
- Buffington, C. A., D. J. Chew, et al. (1997). "Clinical evaluation of cats with nonobstructive urinary tract diseases." Journal of the American Veterinary Medical Association **210**(1): 46-50.
- Buffington, C. A. and S. A. Wolfe, Jr. (1998). "High affinity binding sites for [3H]substance P in urinary bladders of cats with interstitial cystitis." The Journal of urology **160**(2): 605-611.
- Bullock, A. D., M. J. Becich, et al. (1992). "Experimental autoimmune cystitis: a potential murine model for ulcerative interstitial cystitis." The Journal of urology **148**(6): 1951-1956.
- Butrick, C. W. (2003). "Interstitial cystitis and chronic pelvic pain: new insights in neuropathology, diagnosis, and treatment." Clinical obstetrics and gynecology **46**(4): 811-823.
- Caballero, O. L. and Y. T. Chen (2009). "Cancer/testis (CT) antigens: potential targets for immunotherapy." Cancer science **100**(11): 2014-2021.

- Caito, M. and J. Masty (1995). The Presence and Distribution of Substance P and Neuron Specific Enolase Immunoreactivity in the Feline Bladder M s, Ohio State University,  
Ohio State University.
- Carrier, Y., J. Yuan, et al. (2007). "Th3 cells in peripheral tolerance. I. Induction of Foxp3-positive regulatory T cells by Th3 cells derived from TGF-beta T cell-transgenic mice." Journal of immunology **178**(1): 179-185.
- Chazenbalk, G. D., S. Portolano, et al. (1993). "Human organ-specific autoimmune disease. Molecular cloning and expression of an autoantibody gene repertoire for a major autoantigen reveals an antigenic immunodominant region and restricted immunoglobulin gene usage in the target organ." The Journal of clinical investigation **92**(1): 62-74.
- Chen, W., W. Jin, et al. (2003). "Conversion of peripheral CD4+CD25- naive T cells to CD4+CD25+ regulatory T cells by TGF-beta induction of transcription factor Foxp3." The Journal of experimental medicine **198**(12): 1875-1886.
- Chen, Y., V. K. Kuchroo, et al. (1994). "Regulatory T cell clones induced by oral tolerance: suppression of autoimmune encephalomyelitis." Science **265**(5176): 1237-1240.
- Christmas, T. J. (1994). "Lymphocyte sub-populations in the bladder wall in normal bladder, bacterial cystitis and interstitial cystitis." British journal of urology **73**(5): 508-515.



- Christmas, T. J. (1994). "Lymphocyte Subpopulations in the Bladder Wall in Normal Bladder, Bacterial Cystitis and Interstitial Cystitis." British journal of urology **73**(5): 508-515.
- Christmas, T. J. and G. F. Bottazzo (1992). "Abnormal urothelial HLA-DR expression in interstitial cystitis." Clinical and experimental immunology **87**(3): 450-454.
- Clemens, J. Q., R. T. Meenan, et al. (2005). "Prevalence and incidence of interstitial cystitis in a managed care population." The Journal of urology **173**(1): 98-102; discussion 102.
- Cox, P. J. and G. Abel (1979). "Cyclophosphamide cystitis. Studies aimed at its minimization." Biochemical pharmacology **28**(24): 3499-3502.
- Croft, M. (1994). "Activation of naive, memory and effector T cells." Current opinion in immunology **6**(3): 431-437.
- Croft, M. (2003). "Costimulation of T cells by OX40, 4-1BB, and CD27." Cytokine & growth factor reviews **14**(3-4): 265-273.
- Curhan, G. C., F. E. Speizer, et al. (1999). "Epidemiology of interstitial cystitis: a population based study." The Journal of urology **161**(2): 549-552.
- Dardalhon, V., A. Awasthi, et al. (2008). "IL-4 inhibits TGF-beta-induced Foxp3+ T cells and, together with TGF-beta, generates IL-9+ IL-10+ Foxp3(-) effector T cells." Nature immunology **9**(12): 1347-1355.
- Darrah, P. A., D. T. Patel, et al. (2007). "Multifunctional TH1 cells define a correlate of vaccine-mediated protection against *Leishmania major*." Nature medicine **13**(7): 843-850.

- Delovitch, T. L. and B. Singh (1997). "The nonobese diabetic mouse as a model of autoimmune diabetes: immune dysregulation gets the NOD." Immunity **7**(6): 727-738.
- Deng, F. M., F. X. Liang, et al. (2002). "Uroplakin IIIb, a urothelial differentiation marker, dimerizes with uroplakin Ib as an early step of urothelial plaque assembly." The Journal of cell biology **159**(4): 685-694.
- Dudley, M. E., J. R. Wunderlich, et al. (2002). "Cancer regression and autoimmunity in patients after clonal repopulation with antitumor lymphocytes." Science **298**(5594): 850-854.
- Dudley, M. E., J. R. Wunderlich, et al. (2005). "Adoptive cell transfer therapy following non-myeloablative but lymphodepleting chemotherapy for the treatment of patients with refractory metastatic melanoma." Journal of clinical oncology : official journal of the American Society of Clinical Oncology **23**(10): 2346-2357.
- Elbadawi, A. (1997). "Interstitial cystitis: a critique of current concepts with a new proposal for pathologic diagnosis and pathogenesis." Urology **49**(5A Suppl): 14-40.
- Elgebaly, S. A., M. E. Allam, et al. (1992). "Urinary neutrophil chemotactic factors in interstitial cystitis patients and a rabbit model of bladder inflammation." The Journal of urology **147**(5): 1382-1387.
- Emamaullee, J. A., J. Davis, et al. (2009). "Inhibition of Th17 cells regulates autoimmune diabetes in NOD mice." Diabetes **58**(6): 1302-1311.

- Engelhorn, M. E., J. A. Guevara-Patino, et al. (2006). "Autoimmunity and tumor immunity induced by immune responses to mutations in self." Nature medicine **12**(2): 198-206.
- Ercan, F., T. San, et al. (1999). "The effects of cold-restraint stress on urinary bladder wall compared with interstitial cystitis morphology." Urological research **27**(6): 454-461.
- Erickson, D. R., S. X. Xie, et al. (2002). "A comparison of multiple urine markers for interstitial cystitis." Journal of Urology **167**(6): 2461-2469.
- Evans, R. J., R. M. Moldwin, et al. (2011). "Proof of concept trial of tanezumab for the treatment of symptoms associated with interstitial cystitis." The Journal of urology **185**(5): 1716-1721.
- Fall, M. (1985). "Conservative Management of Chronic Interstitial Cystitis - Trans-Cutaneous Electrical Nerve-Stimulation and Trans-Urethral Resection." Journal of Urology **133**(5): 774-778.
- Fitzpatrick, L. R., C. Green, et al. (2011). "Attenuation of arthritis in rodents by a novel orally-available inhibitor of sphingosine kinase." Inflammopharmacology **19**(2): 75-87.
- Fontenot, J. D., M. A. Gavin, et al. (2003). "Foxp3 programs the development and function of CD4+CD25+ regulatory T cells." Nature immunology **4**(4): 330-336.
- Forrest, J. B. and Q. Vo (2001). "Observations on the presentation, diagnosis, and treatment of interstitial cystitis in men." Urology **57**(6 Suppl 1): 26-29.
- French, D. L., R. Laskov, et al. (1989). "The Role of Somatic Hypermutation in the Generation of Antibody Diversity." Science **244**(4909): 1152-1157.

- Gao, X., C. A. Buffington, et al. (1994). "Effect of interstitial cystitis on drug absorption from urinary bladder." The Journal of pharmacology and experimental therapeutics **271**(2): 818-823.
- Garcia, K. C. and L. Teyton (1998). "T-cell receptor peptide-MHC interactions: biological lessons from structural studies." Current opinion in biotechnology **9**(4): 338-343.
- Ghoniem, G. M., A. M. Shaaban, et al. (1995). "Irritable bladder syndrome in an animal model: a continuous monitoring study." Neurourology and urodynamics **14**(6): 657-665.
- Gillespie, L., J. Said, et al. (1990). "Immunofluorescent and histochemical staining confirm the identification of the many diseases called interstitial cystitis." British journal of urology **66**(3): 265-273.
- Goldacre, M. J., J. D. Abisgold, et al. (2006). "Risk of multiple sclerosis after head injury: record linkage study." Journal of neurology, neurosurgery, and psychiatry **77**(3): 351-353.
- Golstein, M. A., M. Manto, et al. (1994). "Chronic Interstitial Cystitis Occurring during the Shift between Rheumatoid-Arthritis and Lupus." Clinical Rheumatology **13**(1): 119-122.
- Golub, E. S. (1991). "The selfish Id: an alternative view of the idiotypic network." Scandinavian journal of immunology **33**(5): 489-494.
- Gossard, A. A. and K. D. Lindor (2012). "Autoimmune hepatitis: a review." Journal of gastroenterology.

- Guevara-Patino, J. A., M. E. Engelhorn, et al. (2006). "Optimization of a self antigen for presentation of multiple epitopes in cancer immunity." The Journal of clinical investigation **116**(5): 1382-1390.
- Hanno, P. (2007). "The urologist as a gatekeeper." Nature clinical practice. Urology **4**(6): 289.
- Hanno, P., R. M. Levin, et al. (1990). "Diagnosis of interstitial cystitis." The Journal of urology **143**(2): 278-281.
- Hanno, P. M. (2008). "Re-imagining interstitial cystitis." The Urologic clinics of North America **35**(1): 91-99; vii.
- Hans-Georg Rammensee, J. B., Niels Nikolaus Emmerich, Oskar Alexander Bachor, Stefan Stevanovic (1999). SYFPEITHI: database for MHC ligands and peptide motifs. . Immunogenetics **50**: 213-219.
- Harrington, D. S., M. Fall, et al. (1990). "Interstitial cystitis: bladder mucosa lymphocyte immunophenotyping and peripheral blood flow cytometry analysis." The Journal of urology **144**(4): 868-871.
- Harrington, L. E., R. D. Hatton, et al. (2005). "Interleukin 17-producing CD4+ effector T cells develop via a lineage distinct from the T helper type 1 and 2 lineages." Nature immunology **6**(11): 1123-1132.
- Hasan, A. K. M. M., Z. Z. Ou, et al. (2007). "Characterization of Xenopus egg membrane microdomains containing uroplakin Ib/III complex: roles of their molecular interactions for subcellular localization and signal transduction." Genes to Cells **12**(2): 251-267.

- Haskins, K. (2005). "Pathogenic T-cell clones in autoimmune diabetes: more lessons from the NOD mouse." Advances in immunology **87**: 123-162.
- Helin, H., J. Mattila, et al. (1987). "In vivo binding of immunoglobulin and complement to elastic structures in urinary bladder vascular walls in interstitial cystitis: demonstration by immunoelectron microscopy." Clinical immunology and immunopathology **43**(1): 88-96.
- Hemler, M. E. (2003). "Tetraspanin proteins mediate cellular penetration, invasion, and fusion events and define a novel type of membrane microdomain." Annual review of cell and developmental biology **19**: 397-422.
- Hofmeister, M. A., F. He, et al. (1997). "Mast cells and nerve fibers in interstitial cystitis (IC): an algorithm for histologic diagnosis via quantitative image analysis and morphometry (QIAM)." Urology **49**(5A Suppl): 41-47.
- Houghton, A. N. and J. A. Guevara-Patino (2004). "Immune recognition of self in immunity against cancer." The Journal of clinical investigation **114**(4): 468-471.
- Hu, P., F. M. Deng, et al. (2000). "Ablation of uroplakin III gene results in small urothelial plaques, urothelial leakage, and vesicoureteral reflux." The Journal of cell biology **151**(5): 961-972.
- Hu, P., S. Meyers, et al. (2002). "Role of membrane proteins in permeability barrier function: uroplakin ablation elevates urothelial permeability." American journal of physiology. Renal physiology **283**(6): F1200-1207.
- Huang, H. Y., S. F. Shariat, et al. (2007). "Persistent uroplakin expression in advanced urothelial carcinomas: implications in urothelial tumor progression and clinical outcome." Human pathology **38**(11): 1703-1713.

- Huber, C. H. and T. Wolfel (2004). "Immunotherapy of cancer: from vision to standard clinical practice." Journal of cancer research and clinical oncology **130**(7): 367-374.
- Infante-Duarte, C., H. F. Horton, et al. (2000). "Microbial lipopeptides induce the production of IL-17 in Th cells." Journal of immunology **165**(11): 6107-6115.
- Jager, A., V. Dardalhon, et al. (2009). "Th1, Th17, and Th9 effector cells induce experimental autoimmune encephalomyelitis with different pathological phenotypes." Journal of immunology **183**(11): 7169-7177.
- Jaini, R., P. Kesaraju, et al. (2010). "An autoimmune-mediated strategy for prophylactic breast cancer vaccination." Nature medicine **16**(7): 799-803.
- Jane-wit, D., M. Yu, et al. (2002). "A novel class II-binding motif selects peptides that mediate organ-specific autoimmune disease in SWXJ, SJL/J, and SWR/J mice." Journal of immunology **169**(11): 6507-6514.
- Jankovic, D., M. C. Kullberg, et al. (2000). "Single cell analysis reveals that IL-4 receptor/Stat6 signaling is not required for the in vivo or in vitro development of CD4+ lymphocytes with a Th2 cytokine profile." Journal of immunology **164**(6): 3047-3055.
- Jasmin, L., G. Janni, et al. (1998). "Activation of CNS circuits producing a neurogenic cystitis: evidence for centrally induced peripheral inflammation." The Journal of neuroscience : the official journal of the Society for Neuroscience **18**(23): 10016-10029.
- Jenkins, M. K. and R. H. Schwartz (2009). "Pillars article: antigen presentation by chemically modified splenocytes induces antigen-specific T cell unresponsiveness

- in vitro and in vivo. *J. Exp. Med.* 1987. 165: 302-319." *Journal of immunology* **183**(7): 4150-4167.
- Jerde, T. J., D. E. Bjorling, et al. (2000). "Determination of mouse bladder inflammatory response to *E. coli* lipopolysaccharide." *Urological research* **28**(4): 269-273.
- Jezernik, K., O. Medalia, et al. (1995). "A comparative study of the desquamation of urothelial cells during gestation and in adults mice following moderate stress or endotoxin treatment." *Cell biology international* **19**(11): 887-893.
- Jiang, H. and L. Chess (2006). "Regulation of immune responses by T cells." *The New England journal of medicine* **354**(11): 1166-1176.
- Johansson, S. L. and M. Fall (1990). "Clinical features and spectrum of light microscopic changes in interstitial cystitis." *The Journal of urology* **143**(6): 1118-1124.
- Jokinen, E. J., K. J. Oravisto, et al. (1973). "The effect of cystectomy on antitissue antibodies in interstitial cystitis." *Clinical and experimental immunology* **15**(3): 457-460.
- Jones, E. Y., L. Fugger, et al. (2006). "MHC class II proteins and disease: a structural perspective." *Nature reviews. Immunology* **6**(4): 271-282.
- Jordan, M. S., A. Boesteanu, et al. (2001). "Thymic selection of CD4+CD25+ regulatory T cells induced by an agonist self-peptide." *Nature immunology* **2**(4): 301-306.
- Kachar, B., F. Liang, et al. (1999). "Three-dimensional analysis of the 16 nm urothelial plaque particle: luminal surface exposure, preferential head-to-head interaction, and hinge formation." *Journal of molecular biology* **285**(2): 595-608.
- Kaplan, M. H., Y. L. Sun, et al. (1996). "Impaired IL-12 responses and enhanced development of Th2 cells in Stat4-deficient mice." *Nature* **382**(6587): 174-177.



- Kappler, J. W., N. Roehm, et al. (1987). "T cell tolerance by clonal elimination in the thymus." Cell **49**(2): 273-280.
- Kato, K., S. Kitada, et al. (1990). "Time-course of alterations of bladder function following acetone-induced cystitis." The Journal of urology **144**(5): 1272-1276.
- Kaufmann, O., J. Volmerig, et al. (2000). "Uroplakin III is a highly specific and moderately sensitive immunohistochemical marker for primary and metastatic urothelial carcinomas." American journal of clinical pathology **113**(5): 683-687.
- Kaushansky, N., R. Zilkha-Falb, et al. (2007). "Pathogenic T cells in MOBP-induced murine EAE are predominantly focused to recognition of MOBP21F and MOBP27P epitopic residues." European journal of immunology **37**(11): 3281-3292.
- Kearney, E. R., K. A. Pape, et al. (1994). "Visualization of peptide-specific T cell immunity and peripheral tolerance induction in vivo." Immunity **1**(4): 327-339.
- Keay, S., C. O. Zhang, et al. (2001). "Antiproliferative factor, heparin-binding epidermal growth factor-like growth factor, and epidermal growth factor: sensitive and specific urine markers for interstitial cystitis." Urology **57**(6 Suppl 1): 104.
- Keay, S., C. O. Zhang, et al. (1997). "Urine autoantibodies in interstitial cystitis." The Journal of urology **157**(3): 1083-1087.
- Keay, S. K., Z. Szekely, et al. (2004). "An antiproliferative factor from interstitial cystitis patients is a frizzled 8 protein-related sialoglycopeptide." Proceedings of the National Academy of Sciences of the United States of America **101**(32): 11803-11808.

- Kent, S. C., Y. Chen, et al. (2005). "Expanded T cells from pancreatic lymph nodes of type 1 diabetic subjects recognize an insulin epitope." Nature **435**(7039): 224-228.
- Khandelwal, P., S. N. Abraham, et al. (2009). "Cell biology and physiology of the uroepithelium." American journal of physiology. Renal physiology **297**(6): F1477-1501.
- Kim, J. H., X. Huang, et al. (2007). "Diabetes slows the recovery from urinary incontinence due to simulated childbirth in female rats." American journal of physiology. Regulatory, integrative and comparative physiology **293**(2): R950-955.
- Kim, R., W. Liu, et al. (2011). "Intravesical dimethyl sulfoxide inhibits acute and chronic bladder inflammation in transgenic experimental autoimmune cystitis models." Journal of biomedicine & biotechnology **2011**: 937061.
- King, C. and N. Sarvetnick (1997). "Organ-specific autoimmunity." Current opinion in immunology **9**(6): 863-871.
- Klein, L., M. Klugmann, et al. (2000). "Shaping of the autoreactive T-cell repertoire by a splice variant of self protein expressed in thymic epithelial cells." Nature medicine **6**(1): 56-61.
- Klinman, D. M., A. K. Yi, et al. (1996). "CpG motifs present in bacteria DNA rapidly induce lymphocytes to secrete interleukin 6, interleukin 12, and interferon gamma." Proceedings of the National Academy of Sciences of the United States of America **93**(7): 2879-2883.

- Kohn, I. J., S. Filer-Maerten, et al. (1998). "Lack of effect following repeated in vivo exposure of the rabbit urinary bladder to urine from interstitial cystitis patients at low infusion volumes." Neurourology and urodynamics **17**(2): 147-152.
- Koltzenburg, M. and S. B. McMahon (1986). "Plasma extravasation in the rat urinary bladder following mechanical, electrical and chemical stimuli: evidence for a new population of chemosensitive primary sensory afferents." Neuroscience letters **72**(3): 352-356.
- Kong, X. T., F. M. Deng, et al. (2004). "Roles of uroplakins in plaque formation, umbrella cell enlargement, and urinary tract diseases." The Journal of cell biology **167**(6): 1195-1204.
- Koziol, J. A. (1994). "Epidemiology of interstitial cystitis." The Urologic clinics of North America **21**(1): 7-20.
- Kuchroo, V. K., A. C. Anderson, et al. (2002). "T cell response in experimental autoimmune encephalomyelitis (EAE): role of self and cross-reactive antigens in shaping, tuning, and regulating the autopathogenic T cell repertoire." Annual review of immunology **20**: 101-123.
- Kutlu, O., E. Akkaya, et al. (2010). "Importance of TNF-related apoptosis-inducing ligand in pathogenesis of interstitial cystitis." International urology and nephrology **42**(2): 393-399.
- Laird, J. M., L. Martinez-Caro, et al. (2001). "A new model of visceral pain and referred hyperalgesia in the mouse." Pain **92**(3): 335-342.

- Langrish, C. L., Y. Chen, et al. (2005). "IL-23 drives a pathogenic T cell population that induces autoimmune inflammation." The Journal of experimental medicine **201**(2): 233-240.
- Lanteri-Minet, M., K. Bon, et al. (1995). "Cyclophosphamide cystitis as a model of visceral pain in rats: model elaboration and spinal structures involved as revealed by the expression of c-Fos and Krox-24 proteins." Experimental brain research. Experimentelle Hirnforschung. Experimentation cerebrale **105**(2): 220-232.
- Lavelle, J. P., S. A. Meyers, et al. (2000). "Urothelial pathophysiological changes in feline interstitial cystitis: a human model." American journal of physiology. Renal physiology **278**(4): F540-553.
- Levy, S. and T. Shoham (2005). "The tetraspanin web modulates immune-signalling complexes." Nature reviews. Immunology **5**(2): 136-148.
- Lewis, S. A. and T. J. Kleine (2000). "Urea modifies the permeability of the mammalian urothelium." The Journal of urology **164**(1): 219-223.
- Li, Z. Q., C. J. Woo, et al. (2004). "The generation of antibody diversity through somatic hypermutation and class switch recombination." Genes & development **18**(1): 1-11.
- Liebert, M., G. Wedemeyer, et al. (1993). "Evidence for urothelial cell activation in interstitial cystitis." The Journal of urology **149**(3): 470-475.
- Lighvani, A. A., D. M. Frucht, et al. (2001). "T-bet is rapidly induced by interferon-gamma in lymphoid and myeloid cells." Proceedings of the National Academy of Sciences of the United States of America **98**(26): 15137-15142.

- Lin, J. Y., J. S. Chen, et al. (2012). "Epicutaneous sensitization with protein antigen induces Th9 cells." The Journal of investigative dermatology **132**(3 Pt 1): 739-741.
- Lin, Y. H., G. Liu, et al. (2008). "Lower urinary tract phenotype of experimental autoimmune cystitis in mouse: a potential animal model for interstitial cystitis." BJU international **102**(11): 1724-1730.
- Liu, G. and F. Daneshgari (2006). "Temporal diabetes- and diuresis-induced remodeling of the urinary bladder in the rat." American journal of physiology. Regulatory, integrative and comparative physiology **291**(3): R837-843.
- Liu, G., Y. H. Lin, et al. (2010). "Temporal morphological and functional impact of complete urinary diversion on the bladder: a model of bladder disuse in rats." The Journal of urology **184**(5): 2179-2185.
- Liu, W., X. Chen, et al. (2011). "Urothelial antigen-specific CD4(+) T cells function as direct effector cells and induce bladder autoimmune inflammation independent of CD8(+) T cells." Mucosal Immunology **4**(4): 428-437.
- Liu, W., B. R. Deyoung, et al. (2008). "RDP58 inhibits T cell-mediated bladder inflammation in an autoimmune cystitis model." Journal of autoimmunity **30**(4): 257-265.
- Liu, W., D. P. Evanoff, et al. (2007). "Urinary bladder epithelium antigen induces CD8(+) T cell tolerance, activation, and autoimmune response (vol 178, pg 539, 2007)." Journal of immunology **178**(5): 3333-3333.

- Livak, F., D. B. Burtrum, et al. (2000). "Genetic modulation of T cell receptor gene segment usage during somatic recombination." The Journal of experimental medicine **192**(8): 1191-1196.
- Locher, G. W. and E. H. Cooper (1970). "Repair of rat urinary bladder epithelium following injury by cyclophosphamide." Investigative urology **8**(1): 116-123.
- Lorenzo Gomez, M. F. and S. Gomez Castro (2004). "[Physiopathologic relationship between interstitial cystitis and rheumatic, autoimmune, and chronic inflammatory diseases]." Archivos espanoles de urologia **57**(1): 25-34.
- Luber-Narod, J., T. Austin-Ritchie, et al. (1996). "Experimental autoimmune cystitis in the Lewis rat: a potential animal model for interstitial cystitis." Urological research **24**(6): 367-373.
- MacAry, P. A., B. J. Holmes, et al. (1998). "Ovalbumin-specific, MHC class I-restricted, alpha beta-positive, Tc1 and Tc0 CD8+ T cell clones mediate the in vivo inhibition of rat IgE." Journal of immunology **160**(2): 580-587.
- MacDermott, J. P., C. H. Miller, et al. (1991). "Cellular immunity in interstitial cystitis." The Journal of urology **145**(2): 274-278.
- Maggi, E., M. G. Giudizi, et al. (1994). "Th2-like CD8+ T cells showing B cell helper function and reduced cytolytic activity in human immunodeficiency virus type 1 infection." The Journal of experimental medicine **180**(2): 489-495.
- Martin Martorell, P., B. O. Roep, et al. (2002). "Autoimmunity in Addison's disease." The Netherlands journal of medicine **60**(7): 269-275.
- Mason, D. (1998). "A very high level of crossreactivity is an essential feature of the T-cell receptor." Immunology today **19**(9): 395-404.

- Mason, D. and F. Powrie (1998). "Control of immune pathology by regulatory T cells." Current opinion in immunology **10**(6): 649-655.
- Mattila, J. and E. Linder (1984). "Immunoglobulin Deposits in Bladder Epithelium and Vessels in Interstitial Cystitis - Possible Relationship to Circulating Anti-Intermediate Filament Autoantibodies." Clinical immunology and immunopathology **32**(1): 81-89.
- Matusевич, D., P. Kivisakk, et al. (1999). "Interleukin-17 mRNA expression in blood and CSF mononuclear cells is augmented in multiple sclerosis." Multiple sclerosis **5**(2): 101-104.
- McDuffie, M., N. Roehm, et al. (1987). "T cell receptor/MHC interactions in the thymus and the shaping of the T cell repertoire." Transplantation proceedings **19**(6 Suppl 7): 111-116.
- McHeyzer-Williams, M. G., J. D. Altman, et al. (1996). "Enumeration and characterization of memory cells in the TH compartment." Immunological reviews **150**: 5-21.
- Messing, E. M. and T. A. Stamey (1978). "Interstitial cystitis: early diagnosis, pathology, and treatment." Urology **12**(4): 381-392.
- Miller, S. D., C. L. Vanderlugt, et al. (1997). "Persistent infection with Theiler's virus leads to CNS autoimmunity via epitope spreading." Nature medicine **3**(10): 1133-1136.
- Moldwin, R. M. (2002). "Similarities between interstitial cystitis and male chronic pelvic pain syndrome." Current urology reports **3**(4): 313-318.

- Mosmann, T. R. and R. L. Coffman (1989). "TH1 and TH2 cells: different patterns of lymphokine secretion lead to different functional properties." Annual review of immunology **7**: 145-173.
- Mukerji, G., Y. Yiangou, et al. (2006). "Transient receptor potential vanilloid receptor subtype 1 in painful bladder syndrome and its correlation with pain." The Journal of urology **176**(2): 797-801.
- Mus, A. M., F. Cornelissen, et al. (2010). "Interleukin-23 promotes Th17 differentiation by inhibiting T-bet and FoxP3 and is required for elevation of interleukin-22, but not interleukin-21, in autoimmune experimental arthritis." Arthritis and Rheumatism **62**(4): 1043-1050.
- Neal, D. E., Jr., J. P. Dilworth, et al. (1991). "Tamm-Horsfall autoantibodies in interstitial cystitis." The Journal of urology **145**(1): 37-39.
- Nicholson, L. B. and V. K. Kuchroo (1996). "Manipulation of the Th1/Th2 balance in autoimmune disease." Current opinion in immunology **8**(6): 837-842.
- Nickel, J. C. (2004). "Interstitial cystitis: a chronic pelvic pain syndrome." The Medical clinics of North America **88**(2): 467-481, xii.
- O'Connor, R. A., C. T. Prendergast, et al. (2008). "Cutting edge: Th1 cells facilitate the entry of Th17 cells to the central nervous system during experimental autoimmune encephalomyelitis." Journal of immunology **181**(6): 3750-3754.
- O'Garra, A., L. Steinman, et al. (1997). "CD4+ T-cell subsets in autoimmunity." Current opinion in immunology **9**(6): 872-883.
- Oberpenning, F., A. van Ophoven, et al. (2002). "Interstitial cystitis: an update." Current opinion in urology **12**(4): 321-332.



- Ochs, R. L. (1997). "Autoantibodies and interstitial cystitis." Clinics in laboratory medicine **17**(3): 571-+.
- Ochs, R. L. (1997). "Autoantibodies and interstitial cystitis." Clinics in laboratory medicine **17**(3): 571-579.
- Ochs, R. L., T. W. Stein, Jr., et al. (1994). "Autoantibodies in interstitial cystitis." The Journal of urology **151**(3): 587-592.
- Ohashi, P. S. (2003). "Negative selection and autoimmunity." Current opinion in immunology **15**(6): 668-676.
- Ottamasathien, S., W. Jia, et al. (2011). "A murine model of inflammatory bladder disease: cathelicidin peptide induced bladder inflammation and treatment with sulfated polysaccharides." The Journal of urology **186**(4 Suppl): 1684-1692.
- Oravisto, K. J. (1980). "Interstitial Cystitis as an Autoimmune-Disease - Review." European urology **6**(1): 10-13.
- Overwijk, W. W., D. S. Lee, et al. (1999). "Vaccination with a recombinant vaccinia virus encoding a "self" antigen induces autoimmune vitiligo and tumor cell destruction in mice: requirement for CD4(+) T lymphocytes." Proceedings of the National Academy of Sciences of the United States of America **96**(6): 2982-2987.
- Pacella, M., V. Varca, et al. (2010). "Interstitial cystitis with plasma cell bladder infiltration: case report and literature review." Archivio italiano di urologia, andrologia : organo ufficiale [di] Societa italiana di ecografia urologica e nefrologica / Associazione ricerche in urologia **82**(2): 122-124.

- Pan, B., L. Y. Zeng, et al. (2012). "Altered balance between Th1 and Th17 cells in circulation is an indicator for the severity of murine acute GVHD." Immunology letters **142**(1-2): 48-54.
- Park, H., Z. Li, et al. (2005). "A distinct lineage of CD4 T cells regulates tissue inflammation by producing interleukin 17." Nature immunology **6**(11): 1133-1141.
- Parmigiani, R. B., F. Bettoni, et al. (2006). "Characterization of a cancer/testis (CT) antigen gene family capable of eliciting humoral response in cancer patients." Proceedings of the National Academy of Sciences of the United States of America **103**(48): 18066-18071.
- Parsons, C. L. (1996). "Interstitial cystitis." International journal of urology : official journal of the Japanese Urological Association **3**(6): 415-420.
- Parsons, C. L. (2003). "Prostatitis, interstitial cystitis, chronic pelvic pain, and urethral syndrome share a common pathophysiology: lower urinary dysfunctional epithelium and potassium recycling." Urology **62**(6): 976-982.
- Parsons, C. L. (2007). "The role of the urinary epithelium in the pathogenesis of interstitial cystitis/prostatitis/urethritis." Urology **69**(4 Suppl): 9-16.
- Paul, W. E. and R. A. Seder (1994). "Lymphocyte responses and cytokines." Cell **76**(2): 241-251.
- Peeker, R., L. Atanasiu, et al. (2003). "Intercurrent autoimmune conditions in classic and non-ulcer interstitial cystitis." Scandinavian Journal of Urology and Nephrology **37**(1): 60-63.

- Perrin, P. J., D. Scott, et al. (1996). "Opposing effects of CTLA4-Ig and anti-CD80 (B7-1) plus anti-CD86 (B7-2) on experimental allergic encephalomyelitis." Journal of neuroimmunology **65**(1): 31-39.
- Peterson, P. and L. Peltonen (2005). "Autoimmune polyendocrinopathy syndrome type 1 (APS1) and AIRE gene: new views on molecular basis of autoimmunity." Journal of autoimmunity **25 Suppl**: 49-55.
- Phan, G. Q., J. C. Yang, et al. (2003). "Cancer regression and autoimmunity induced by cytotoxic T lymphocyte-associated antigen 4 blockade in patients with metastatic melanoma." Proceedings of the National Academy of Sciences of the United States of America **100**(14): 8372-8377.
- Phull, H., M. Salkini, et al. (2007). "Angiotensin II plays a role in acute murine experimental autoimmune cystitis." BJU international **100**(3): 664-667.
- Pontari MA, H. P., Ed. (1995). Interstitial cystitis. Campbell's Urology, Update #14. Philadelphia, WB Saunders.
- Press SM, M. R., Kushner L, et al. (1995). "Decreased expression of GP-51 glycosaminoglycan in cats afflicted with feline interstitial cystitis. ." J Urol **153**: 288A.
- Rahi, A., G. Morgan, et al. (1978). "Immunological investigations in post-traumatic granulomatous and non-granulomatous uveitis." The British journal of ophthalmology **62**(10): 722-728.
- Ratliff, T. L., C. G. Klutke, et al. (1995). "Role of the immune response in interstitial cystitis." Clinical immunology and immunopathology **74**(3): 209-216.

- Ratliff, T. L., C. G. Klutke, et al. (1994). "The etiology of interstitial cystitis." The Urologic clinics of North America **21**(1): 21-30.
- Robey, E. and B. J. Fowlkes (1994). "Selective events in T cell development." Annual review of immunology **12**: 675-705.
- Romagnani, S. (1995). "Biology of human TH1 and TH2 cells." Journal of clinical immunology **15**(3): 121-129.
- Romagnani, S. (1997). "The Th1/Th2 paradigm." Immunology today **18**(6): 263-266.
- Romagnani, S. (2006). "Immunological tolerance and autoimmunity." Internal and emergency medicine **1**(3): 187-196.
- Romagnani, S., P. Parronchi, et al. (1997). "An update on human Th1 and Th2 cells." International archives of allergy and immunology **113**(1-3): 153-156.
- Rosin, R. D., T. Griffiths, et al. (1979). "Interstitial cystitis." British journal of urology **51**(6): 524-527.
- Rudick, C. N., P. J. Bryce, et al. (2008). "Mast cell-derived histamine mediates cystitis pain." PloS one **3**(5): e2096.
- Rudick, C. N., A. J. Schaeffer, et al. (2009). "Pharmacologic attenuation of pelvic pain in a murine model of interstitial cystitis." BMC urology **9**: 16.
- Rudick, C. N., A. J. Schaeffer, et al. (2008). "Experimental autoimmune prostatitis induces chronic pelvic pain." American journal of physiology. Regulatory, integrative and comparative physiology **294**(4): R1268-1275.
- Saban, M. R., R. Towner, et al. (2007). "Lymphatic vessel density and function in experimental bladder cancer." BMC cancer **7**: 219.

- Saban, R., M. Christensen, et al. (1991). "Experimental model for the study of bladder mast cell degranulation and smooth muscle contraction." Seminars in urology **9**(2): 88-101.
- Saban, R., M. R. Saban, et al. (2001). "Mast cell regulation of inflammation and gene expression during antigen-induced bladder inflammation in mice." Physiological genomics **7**(1): 35-43.
- Saban, R., M. R. Saban, et al. (2000). "Neurokinin-1 (NK-1) receptor is required in antigen-induced cystitis." The American journal of pathology **156**(3): 775-780.
- Sad, S., R. Marcotte, et al. (1995). "Cytokine-induced differentiation of precursor mouse CD8+ T cells into cytotoxic CD8+ T cells secreting Th1 or Th2 cytokines." Immunity **2**(3): 271-279.
- Saeki, K. and Y. Iwasa (2011). "T cell anergy as a strategy to reduce the risk of autoimmunity." Journal of theoretical biology **277**(1): 74-82.
- Said, J. W., R. Van de Velde, et al. (1989). "Immunopathology of interstitial cystitis." Modern pathology : an official journal of the United States and Canadian Academy of Pathology, Inc **2**(6): 593-602.
- Sairanen, J., T. L. Tammela, et al. (2005). "Cyclosporine A and pentosan polysulfate sodium for the treatment of interstitial cystitis: a randomized comparative study." The Journal of urology **174**(6): 2235-2238.
- Sakaguchi, S., N. Sakaguchi, et al. (1995). "Immunologic self-tolerance maintained by activated T cells expressing IL-2 receptor alpha-chains (CD25). Breakdown of a single mechanism of self-tolerance causes various autoimmune diseases." Journal of immunology **155**(3): 1151-1164.

- Salgame, P., J. S. Abrams, et al. (1991). "Differing lymphokine profiles of functional subsets of human CD4 and CD8 T cell clones." Science **254**(5029): 279-282.
- Seddon, B. and D. Mason (1999). "Peripheral autoantigen induces regulatory T cells that prevent autoimmunity." The Journal of experimental medicine **189**(5): 877-882.
- Sharpe, A. H. and A. K. Abbas (2006). "T-cell costimulation--biology, therapeutic potential, and challenges." The New England journal of medicine **355**(10): 973-975.
- Shimizu, I., K. Kawashima, et al. (1999). "Urodynamics in acetone-induced cystitis of anesthetized rats." Neurourology and urodynamics **18**(2): 115-127.
- Shorter, B., L. Kushner, et al. (2006). "Effects of comestibles on symptoms of interstitial cystitis." Journal of Urology **175**(4): 97-97.
- Shortman, K., M. Egerton, et al. (1990). "The generation and fate of thymocytes." Seminars in immunology **2**(1): 3-12.
- Shuford, W. W., K. Klussman, et al. (1997). "4-1BB costimulatory signals preferentially induce CD8+ T cell proliferation and lead to the amplification in vivo of cytotoxic T cell responses." The Journal of experimental medicine **186**(1): 47-55.
- Smith, C. A., C. M. Graham, et al. (1994). "Immunodominance correlates with T-cell receptor (alpha beta) gene usage in the class II-restricted response to influenza haemagglutinin." Immunology **82**(3): 343-350.
- Solares, C. A., A. E. Edling, et al. (2004). "Murine autoimmune hearing loss mediated by CD4+ T cells specific for inner ear peptides." The Journal of clinical investigation **113**(8): 1210-1217.

- Sospedra, M., X. Ferrer-Francesch, et al. (1998). "Transcription of a broad range of self-antigens in human thymus suggests a role for central mechanisms in tolerance toward peripheral antigens." Journal of immunology **161**(11): 5918-5929.
- Sospedra, M. and R. Martin (2005). "Immunology of multiple sclerosis." Annual review of immunology **23**: 683-747.
- Spanos, C., X. Pang, et al. (1997). "Stress-induced bladder mast cell activation: implications for interstitial cystitis." The Journal of urology **157**(2): 669-672.
- Steinman, L. (2007). "A brief history of T(H)17, the first major revision in the T(H)1/T(H)2 hypothesis of T cell-mediated tissue damage." Nature medicine **13**(2): 139-145.
- Sun, T. T. (2006). "Altered phenotype of cultured urothelial and other stratified epithelial cells: implications for wound healing." American journal of physiology. Renal physiology **291**(1): F9-21.
- Suzuki, Y. and J. S. Remington (1988). "Dual regulation of resistance against Toxoplasma gondii infection by Lyt-2+ and Lyt-1+, L3T4+ T cells in mice." Journal of immunology **140**(11): 3943-3946.
- Swanborg, R. H. (1995). "Experimental autoimmune encephalomyelitis in rodents as a model for human demyelinating disease." Clinical immunology and immunopathology **77**(1): 4-13.
- Szabo, S. J., S. T. Kim, et al. (2000). "A novel transcription factor, T-bet, directs Th1 lineage commitment." Cell **100**(6): 655-669.

- Tamaki, M., R. Saito, et al. (2004). "Possible mechanisms inducing glomerulations in interstitial cystitis: relationship between endoscopic findings and expression of angiogenic growth factors." The Journal of urology **172**(3): 945-948.
- Teunissen, M. B., C. W. Koomen, et al. (1998). "Interleukin-17 and interferon-gamma synergize in the enhancement of proinflammatory cytokine production by human keratinocytes." The Journal of investigative dermatology **111**(4): 645-649.
- Thaxton, C. S., S. E. Eggener, et al. (2004). "Plasma cell infiltration of the urinary bladder." Urology **64**(1): 156-157.
- Theoharides, T. C. (2004). "Panic disorder, interstitial cystitis, and mast cells." Journal of clinical psychopharmacology **24**(4): 361-364.
- Thierfelder, W. E., J. M. van Deursen, et al. (1996). "Requirement for Stat4 in interleukin-12-mediated responses of natural killer and T cells." Nature **382**(6587): 171-174.
- Thomas, G. P. and M. A. Brown (2010). "Genetics and genomics of ankylosing spondylitis." Immunological reviews **233**(1): 162-180.
- Thumbikat, P., R. E. Berry, et al. (2009). "Bacteria-induced uroplakin signaling mediates bladder response to infection." PLoS pathogens **5**(5): e1000415.
- Till, S., B. Li, et al. (1995). "Secretion of the eosinophil-active cytokines interleukin-5, granulocyte/macrophage colony-stimulating factor and interleukin-3 by bronchoalveolar lavage CD4+ and CD8+ T cell lines in atopic asthmatics, and atopic and non-atopic controls." European journal of immunology **25**(10): 2727-2731.



- Toft, B. R. and J. Nordling (2006). "Recent developments of intravesical therapy of painful bladder syndrome/interstitial cystitis: a review." Current opinion in urology **16**(4): 268-272.
- Townsend, A. R., J. Rothbard, et al. (1986). "The epitopes of influenza nucleoprotein recognized by cytotoxic T lymphocytes can be defined with short synthetic peptides." Cell **44**(6): 959-968.
- Tu, L., T. T. Sun, et al. (2002). "Specific heterodimer formation is a prerequisite for uroplakins to exit from the endoplasmic reticulum." Molecular biology of the cell **13**(12): 4221-4230.
- Tuohy, V. K. (2010). "A prophylactic vaccine for breast cancer? Why not?" Breast cancer research : BCR **12**(6): 405.
- Tuohy, V. K., Z. Lu, et al. (1989). "Identification of an encephalitogenic determinant of myelin proteolipid protein for SJL mice." Journal of immunology **142**(5): 1523-1527.
- Tuohy, V. K. and D. M. Thomas (1995). "Sequence 104-117 of myelin proteolipid protein is a cryptic encephalitogenic T cell determinant for SJL/J mice." Journal of neuroimmunology **56**(2): 161-170.
- Tuohy, V. K., D. M. Thomas, et al. (1995). "Determinant-regulated onset of experimental autoimmune encephalomyelitis: distinct epitopes of myelin proteolipid protein mediate either acute or delayed disease in SJL/J mice." Autoimmunity **21**(3): 203-214.

- Uyemura, K., C. Pirmez, et al. (1993). "CD4+ type 1 and CD8+ type 2 T cell subsets in human leishmaniasis have distinct T cell receptor repertoires." Journal of immunology **151**(12): 7095-7104.
- van de Merwe, J. P. (2007). "Interstitial cystitis and systemic autoimmune diseases." Nature clinical practice. Urology **4**(9): 484-491.
- Van De Merwe, J. P. and H. J. Arendsen (2000). "Interstitial cystitis: a review of immunological aspects of the aetiology and pathogenesis, with a hypothesis." BJU international **85**(8): 995-999.
- van de Merwe, J. P., T. Yamada, et al. (2003). "Systemic aspects of interstitial cystitis, immunology and linkage with autoimmune disorders." International journal of urology : official journal of the Japanese Urological Association **10 Suppl**: S35-38.
- Veldhoen, M., R. J. Hocking, et al. (2006). "TGFbeta in the context of an inflammatory cytokine milieu supports de novo differentiation of IL-17-producing T cells." Immunity **24**(2): 179-189.
- Veldhoen, M., C. Uyttenhove, et al. (2008). "Transforming growth factor-beta 'reprograms' the differentiation of T helper 2 cells and promotes an interleukin 9-producing subset." Nature immunology **9**(12): 1341-1346.
- Vera, P. L., K. A. Iczkowski, et al. (2008). "Cyclophosphamide-induced cystitis increases bladder CXCR4 expression and CXCR4-macrophage migration inhibitory factor association." PloS one **3**(12): e3898.

- Vukmanovic-Stejic, M., B. Vyas, et al. (2000). "Human Tc1 and Tc2/Tc0 CD8 T-cell clones display distinct cell surface and functional phenotypes." Blood **95**(1): 231-240.
- Wagner, D. H., Jr., E. Newell, et al. (1999). "Increased expression of CD40 on thymocytes and peripheral T cells in autoimmunity: a mechanism for acquiring changes in the peripheral T cell receptor repertoire." International journal of molecular medicine **4**(3): 231-242.
- Walker, L. S. and A. K. Abbas (2002). "The enemy within: keeping self-reactive T cells at bay in the periphery." Nature reviews. Immunology **2**(1): 11-19.
- Warren, J. W., T. L. Jackson, et al. (2004). "Prevalence of interstitial cystitis in first-degree relatives of patients with interstitial cystitis." Urology **63**(1): 17-21.
- Warren, J. W., P. Langenberg, et al. (2008). "Sites of pain from interstitial cystitis/painful bladder syndrome." The Journal of urology **180**(4): 1373-1377.
- Wassenaar, A., C. Reinhardus, et al. (1996). "Type-1 and type-2 CD8+ T-cell subsets isolated from chronic adult periodontitis tissue differ in surface phenotype and biological functions." Immunology **87**(1): 113-118.
- Westropp, J. L. and C. A. Buffington (2002). "In vivo models of interstitial cystitis." The Journal of urology **167**(2 Pt 1): 694-702.
- Wilson, C. (2011). "Autoimmunity: autoimmune Addison disease and premature ovarian failure." Nature reviews. Endocrinology **7**(9): 498.
- Winer, S. and D. A. Winer (2012). "The adaptive immune system as a fundamental regulator of adipose tissue inflammation and insulin resistance." Immunology and Cell Biology.

- Wingren, A. G., E. Parra, et al. (1995). "T cell activation pathways: B7, LFA-3, and ICAM-1 shape unique T cell profiles." Critical reviews in immunology **15**(3-4): 235-253.
- Worth, A., A. J. Thrasher, et al. (2006). "Autoimmune lymphoproliferative syndrome: molecular basis of disease and clinical phenotype." British journal of haematology **133**(2): 124-140.
- Wu, R. L., I. Osman, et al. (1998). "Uroplakin II gene is expressed in transitional cell carcinoma but not in bilharzial bladder squamous cell carcinoma: alternative pathways of bladder epithelial differentiation and tumor formation." Cancer research **58**(6): 1291-1297.
- Wu, X., Y. Kakehi, et al. (2005). "Uroplakin II as a promising marker for molecular diagnosis of nodal metastases from bladder cancer: comparison with cytokeratin 20." The Journal of urology **174**(6): 2138-2142, discussion 2142-2133.
- Wu, X. R., J. H. Lin, et al. (1994). "Mammalian uroplakins. A group of highly conserved urothelial differentiation-related membrane proteins." The Journal of biological chemistry **269**(18): 13716-13724.
- Wu, X. R., J. J. Medina, et al. (1995). "Selective interactions of UPIa and UPIb, two members of the transmembrane 4 superfamily, with distinct single transmembrane-domained proteins in differentiated urothelial cells." The Journal of biological chemistry **270**(50): 29752-29759.
- Yamada, T. (2003). "Significance of complications of allergic diseases in young patients with interstitial cystitis." International journal of urology : official journal of the Japanese Urological Association **10 Suppl**: S56-58.

- Yamane, H., J. Zhu, et al. (2005). "Independent roles for IL-2 and GATA-3 in stimulating naive CD4+ T cells to generate a Th2-inducing cytokine environment." The Journal of experimental medicine **202**(6): 793-804.
- Yu, J., J. H. Lin, et al. (1994). "Uroplakins Ia and Ib, two major differentiation products of bladder epithelium, belong to a family of four transmembrane domain (4TM) proteins." The Journal of cell biology **125**(1): 171-182.
- Yu, M., J. M. Johnson, et al. (1996). "A predictable sequential determinant spreading cascade invariably accompanies progression of experimental autoimmune encephalomyelitis: a basis for peptide-specific therapy after onset of clinical disease." The Journal of experimental medicine **183**(4): 1777-1788.
- Zhang, J., Z. Huang, et al. (2012). "IFN-gamma induced by IL-12 administration prevents diabetes by inhibiting pathogenic IL-17 production in NOD mice." Journal of autoimmunity **38**(1): 20-28.
- Zhu, H. J., Z. Q. Zhang, et al. (2004). "[Effect of mouse uroplakin II promoter on human bladder cancer cell line]." Zhonghua zhong liu za zhi [Chinese journal of oncology] **26**(1): 22-25.
- Zhu, H. J., Z. Q. Zhang, et al. (2004). "Cloning and analysis of human UroplakinII promoter and its application for gene therapy in bladder cancer." Cancer gene therapy **11**(4): 263-272.
- Zhu, J., J. Cote-Sierra, et al. (2003). "Stat5 activation plays a critical role in Th2 differentiation." Immunity **19**(5): 739-748.
- Zhu, J., L. Guo, et al. (2001). "Stat6 is necessary and sufficient for IL-4's role in Th2 differentiation and cell expansion." Journal of immunology **166**(12): 7276-7281.

Zhu, J., B. Min, et al. (2004). "Conditional deletion of Gata3 shows its essential function in T(H)1-T(H)2 responses." Nature immunology **5**(11): 1157-1165.

Zhu, J., H. Yamane, et al. (2006). "GATA-3 promotes Th2 responses through three different mechanisms: induction of Th2 cytokine production, selective growth of Th2 cells and inhibition of Th1 cell-specific factors." Cell research **16**(1): 3-10.