

Cleveland State University
EngagedScholarship@CSU



Biological, Geological, and Environmental Faculty Publications Biological, Geological, and Environmental Sciences Department

2013

Developmental Variation and Distyly in *Hedyotis caerulea* (Rubiaceae)

Dennis A. Sampson
Cleveland State University

Robert A. Krebs
Cleveland State University, r.krebs@csuohio.edu

Follow this and additional works at: https://engagedscholarship.csuohio.edu/scibges_facpub

 Part of the [Plant Biology Commons](#)

How does access to this work benefit you? Let us know!

Publisher's Statement

Open Access

Recommended Citation

Sampson, D. A. and R. A. Krebs. 2013. Developmental variation and distyly in *Hedyotis caerulea* (Rubiaceae). SpringerPlus 2(1) <http://dx.doi.org/10.1186/2193-1801-2-383>.

This Article is brought to you for free and open access by the Biological, Geological, and Environmental Sciences Department at EngagedScholarship@CSU. It has been accepted for inclusion in Biological, Geological, and Environmental Faculty Publications by an authorized administrator of EngagedScholarship@CSU. For more information, please contact library.es@csuohio.edu.

RESEARCH

Open Access

Developmental variation and the evolution of distyly in *Hedyotis caerulea* (Rubiaceae)

Dennis A Sampson and Robert A Krebs*

Abstract

The development of distyly is thought to arise from differential growth patterns in the pin and thrum morphs. However, few detailed studies exist on the early floral development of distylous flowers, and fewer still look at variation in these traits among populations. Buds at multiple stages of development were collected from five populations of *Hedyotis caerulea* to quantify how pins and thrums diverge with respect to the initiation, rate, and termination of growth between the stamens and stigmas. The growth rate of anthers varied little spatially across five populations and temporally in both pins and thrums, although thrum anthers grew faster than pin anthers. Dimorphy in stigma height was more complex. Pin stigmas first grew at a faster rate than those of thrums, and late in bud development, growth of thrum styles slowed. These rate changes varied among populations, and they differed from the congeneric *H. salzmanii*. Similar differences between morphs are known in other heterostylous species, and such variation in growth pattern among related species has been used to infer independent evolution of distylous systems.

Keywords: Bluets; Flowers; Herkogamy; Heterostyly; *Houstonia*; Isoplethy; Floral morphology

Introduction

Morphological variation in flowers is determined by the combined effects of genotype, developmental programming, and environmental variation (Diggle 1992). Not surprisingly then studies of floral development have made significant contributions to understanding the evolution of plant mating systems. When available, phylogenetic hypotheses concerning the taxa studied can be merged with variation in their developmental patterns to identify possible evolutionary pathways by which new morphologies emerge (e.g., Guerrant 1982; Hufford 1995; Kellogg 1990; Friedman and Carmichael 1998; Cohen 2011). With respect to herkogamy and one stably polymorphic form, distyly, understanding evolutionary change has been hampered by a need to track developmental change in floral development (Cohen et al. 2012).

Fewer than 20 papers during the last 100 years have critically examined how the different forms of flowers arise in heterostylous species according to Cohen (2010), who noted that the majority of them focus on tristylous species. In one review, Richards and Barrett (1992) concluded

that variation in floral organ development among families derives from independent evolutionary events that led to tristylous. While they predicted that the same could be true for distyly, they lacked information on distylous floral development in a sufficient number of species largely limited to members of the Boraginaceae (Cohen et al., 2012), Linaceae (Armbruster et al. 2006), Primulaceae (Stirling 1932; Webster and Gilmartin 2006), Santalaceae (Riveros et al. 1987), and finally the Rubiaceae, which may be the best studied family based on reports for *Faramea suerrensii* (Richards and Barrett 1992), *Guettarda scabra* (Richards and Koptur 1993), *Hedyotis salzmanii* (Riveros et al. 1995), *Psychotria* spp and *Bouvardia ternifolia* (Faivre 2000), and *Palicourea padifolia* (Hernandez and Ornelas 2007).

A limited number of distylous species have been studied given that distyly occurs in some 28 different families (Barrett 2002). At least four distinct developmental pathways have been characterized for achieving differences in stigma height between pin (long-styled) and thrum (short-styled) flowers, and at least two developmental patterns contribute to differences in anther height between the morphs (Faivre 2000; Cohen 2010). It is therefore likely that additional developmental pathways will

* Correspondence: r.krebs@csuohio.edu
Department of Biological, Geological, and Environmental Sciences, Cleveland State University, 2121 Euclid Ave, Cleveland, OH 44115-2406, USA

be identified, and such variation among species as well as divergence among populations may help to establish what evolutionary patterns most likely underlie the origins of this trait.

Here we quantitatively compared the initiation, rate, and termination of growth between the stamens and stigmas in another member of the Rubiaceae, the distylous *Hedyotis caerulea*, and make these measurements across multiple populations. The goal was to establish developmentally when and how the floral morphology of pins and thrums diverged, to compare development to a congener and other distylous taxa, and to produce inferences on the mechanisms by which distily evolved.

Materials and methods

We collected 212 pin buds and 219 thrum buds at various stages of development from five populations of *H. caerulea* in northeastern Ohio in May 2008: #2, 4, 9, 10 and 13 from Sampson and Krebs (2012), which will be identified here as A-E, respectively. Buds were chosen in a manner that included the widest range of development possible, although the smallest buds were selected first in order to ensure their adequate representation in the data set given that *H. caerulea* possess a short growing season (Ornduff 1980). Tiny buds were chosen from plants that already had a mature flower, which is necessary to score the individual as a pin or a thrum. All buds were preserved when fresh cut in 80% ethanol. Buds

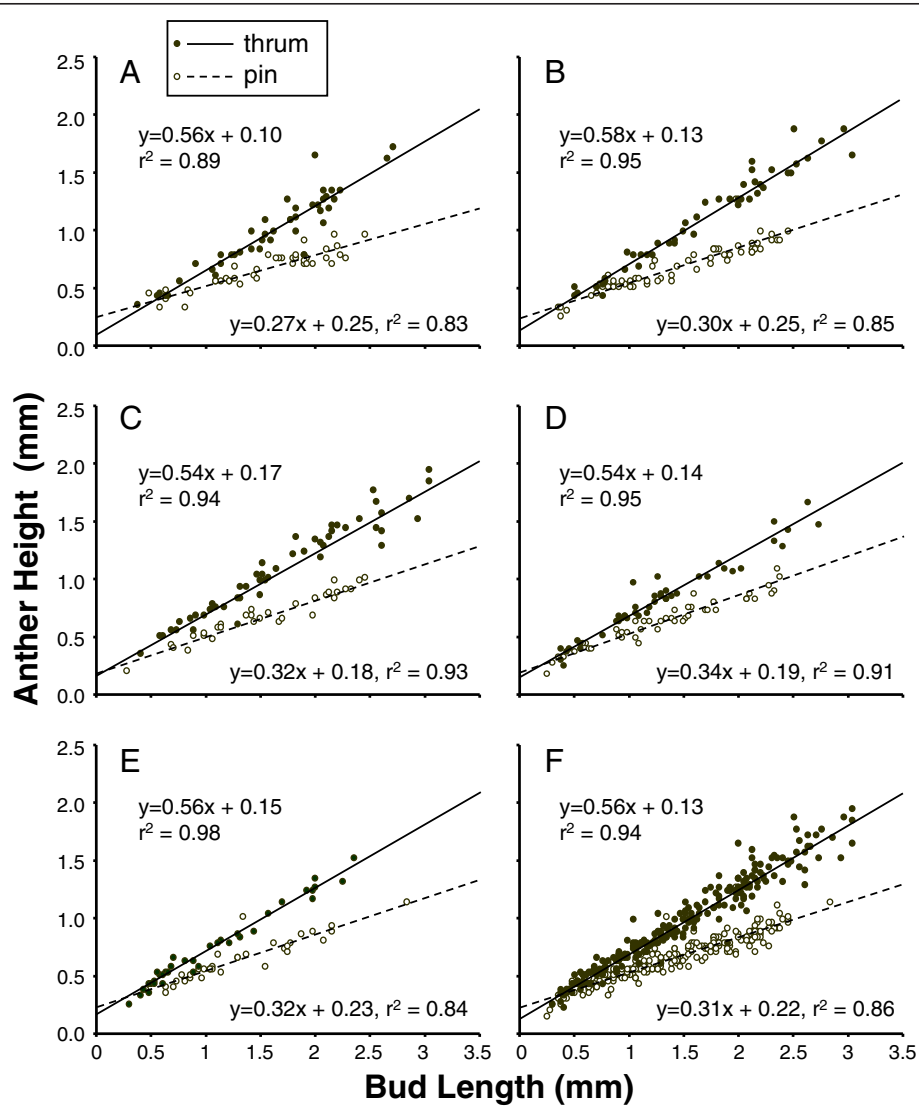


Figure 1 Anther development in pin and thrum floral morphs of *H. caerulea*. Data of bud lengths (mm) versus height of anthers (mm) were plotted for each bud collected across five populations (A-E), and F provides results for all populations combined, and lines of best fit are simple linear regression of bud length predicting anther height.

were dissected to measure bud length, stigma height, and anther height using an Olympus SZX12 dissecting microscope equipped with an ocular micrometer accurate to <0.01 mm at 90 \times , its highest resolution.

Bud length was examined as a relative estimate of developmental time to which stigma height and anther height were compared in pin and thrum morphs. Bud size was the independent variable and floral organ measurements were the dependent variables, and both were log-transformed prior to regression analyses to normalize data under the assumption that variance correlates with the mean. Raw measurements, however, were also presented for clarity and contrast. Size of developing stigmas and anthers were contrasted against total bud length using

both a linear and a second-order term in models to test whether the relationship could best be described as curvilinear or linear, and to improve the power of this particular test, results of all five populations were pooled. Relationships among populations were tested in general linear models (Proc GLM; SAS Institute 2002) to assess variation among populations as fixed factors and to test interactions between morphs and populations on both anther and stigma height.

Results

Variation in growth rate between pins and thrums occurred very early in development (Figures 1 and 2). Across the five populations sampled, the linear term

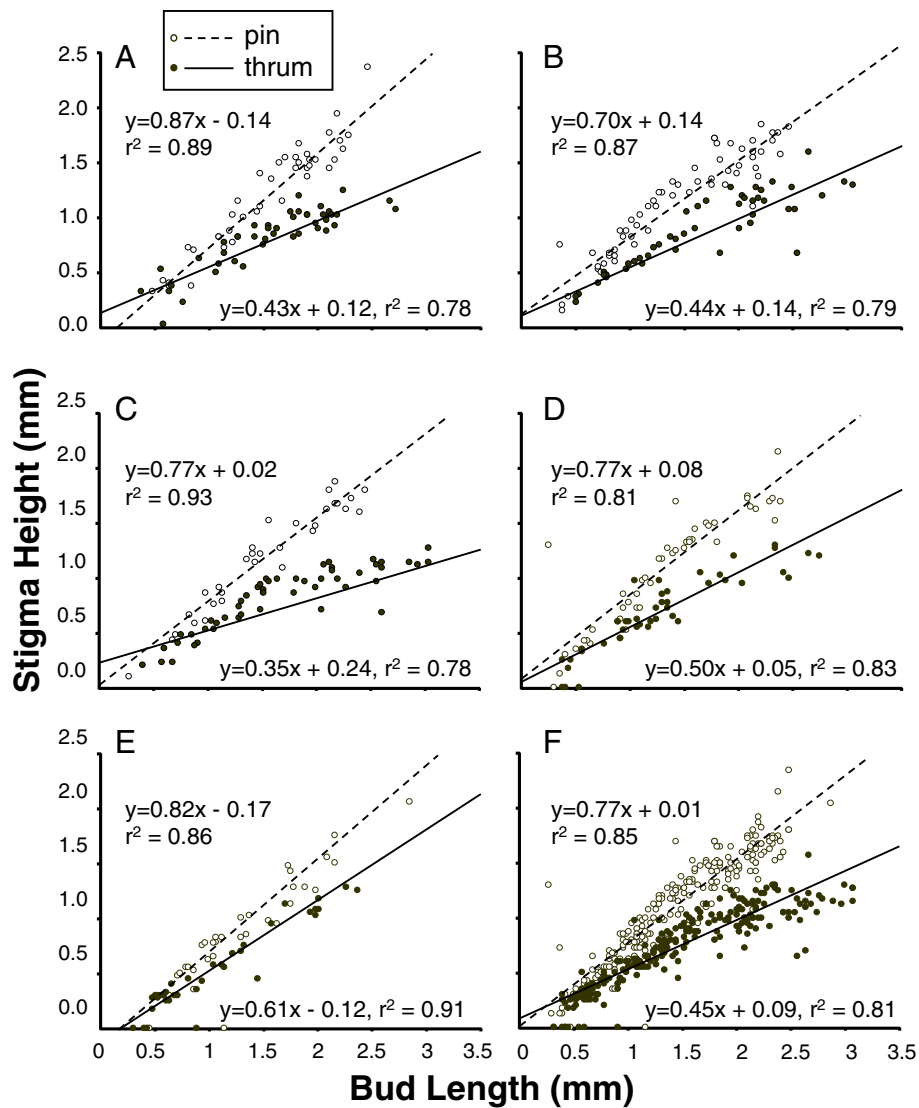


Figure 2 Stigma development in pin and thrum floral morphs of *H. caerulea*. Data of bud lengths (mm) versus height of the stigmas (mm) were plotted for each bud collected across five populations (A-E), and F provides results for all populations combined, and lines of best fit are simple linear regression of bud length predicting stigma height.

explained most of the variation in the relationship between bud length and anther height in both thrum and pin flowers (Figure 1, linear regressions on raw data are provided in the figure). Results were similar where data were log transformed, and for all five populations combined, a step that provided the power necessary to test for a fit of a second-order term on anther height, no improvement in the model was observed for either morph (Table 1). Thus, the growth of anther height relative to bud length was described by a best fit linear equation where the slope differed significantly between morphs ($F_{1,411} = 21.6$, $P < 0.001$), but minimally among populations. Slopes of both morphs also were significantly ($P < 0.001$) less than one. In both morphs, the filament served only to attach the anther to the inner surface of the corolla tube and made no contribution to the height of the anther.

Intermorph differences in stigma development were less straightforward than those for anthers, although for all populations a regression of bud length of stigma height explained at least 78% of the variance (Figure 2, linear regressions on raw data are provided in the figure). To test for the fit of a second-order term, log-transformed results were again combined for all five populations. In pin flowers, the slope based on linear regression for bud length on stigma height explained 84% of the variation, and no improvement occurred by adding a second-order term (Table 1). In thrum flowers, the slope from linear regression similarly also explained 84% of the variance in thrum flowers, but here a second-order term was significant, and it improved the predictive fit of growth patterns to 87% of the variance (Table 1B).

Thus, for thrum flowers, shape and magnitude of growth rate of stigmas suggested curvilinear characteristics, which

could be partitioned to examine early growth (bud lengths up to 1.5 mm) and later growth (regressing bud length on stigma height only for buds greater than 1.5 mm), using log transformed data. Basically, growth began at a rate significantly faster than one (2.44 ± 0.30 , $t_{116} = 4.86$, $P < 0.001$, for the range 0–1.5 mm) and then tapered off to 0.38 ± 0.08 , and while still significantly above zero ($t_{99} = 5.0$, $P < 0.001$), a temporal shift in growth rate based on differences in slope was significant ($t_{132} = 6.6$, $P < 0.001$, under assumptions of unequal sample sizes and variances).

Among the five populations, growth in anther and stigma heights followed similar trends (Figures 1 and 2). Neither population as a main effect nor the interaction between population and bud length was significant for anther height. Population variation in stigma height, however, was significant both as a main effect ($F_{4,411} = 6.4$, $P < 0.001$) and as an interaction with bud length ($F_{4,411} = 4.1$, $P < 0.01$), indicating that variation in slopes occurred among populations. However, no interactions between population and floral morph were detected, and the amount of variation explained by differences in the slope between pins and thrums remained several times greater than variation attributable to population [sum-of-squares for differences in the bud length on stigma height slope between morphs was 0.42 (df = 1), while population variation in slope was just 0.12 (with df = 4)].

Discussion

Growth rate was uniform in anthers for both pins and thrums, but as expected, thrum anthers grew faster than pin anthers. Thus, dimorphy in anther height developed from continuous variation between morphs in growth rates beginning in the early stages of bud elongation. Species with similar anther developmental variation to that of

Table 1 Linear and curvilinear regression analysis of relative growth rate (X) of anther heights and stigma heights against bud length, for pin and thrum floral morphs

A. Linear regression						
Anthers	X	y-intercept	P(x)	r ²	N	
Pin	0.43 ± 0.01	0.13 ± 0.01	<0.0001	0.88	212	
Thrum	0.69 ± 0.01	0.05 ± 0.01	<0.0001	0.95	219	
Stigmas						
Pin	0.91 ± 0.03	-0.06 ± 0.02	<0.0001	0.84	212	
Thrum	0.67 ± 0.02	-0.04 ± 0.02	<0.0001	0.84	219	
B. Polynomial regression						
Anthers	X ²	X	y-intercept	P(x ²)	P(x)	r ²
Pin	-0.01 ± 0.04	0.45 ± 0.07	0.12 ± 0.03	0.840	<0.0001	0.88
Thrum	0.09 ± 0.04	0.54 ± 0.06	0.11 ± 0.03	0.019	<0.0001	0.95
Stigmas						
Pin	-0.04 ± 0.10	0.97 ± 0.17	-0.08 ± 0.06	0.706	<0.0001	0.84
Thrum	-0.43 ± 0.06	1.40 ± 0.11	-0.31 ± 0.04	<0.0001	<0.0001	0.87

Regression equations are based on log transformed data combined for the five populations of *H. caerulea*.

H. caerulea include its congener, *H. salzmanii* (Riveros et al. 1995) as well as *Guettarda scabra* (Rubiaceae) (Richards and Koptur 1993), *Psychotria chiapensis*, *P. poeppigiana* and *Bouvardia ternifolia* (Rubiaceae) (Faivre 2000), *Primula vulgaris* (Webster and Gilmartin 2006), *Quinchamalium chilense* (Santalaceae) (Riveros et al. 1987), and species of *Lithospermum* (Cohen 2011). The only reported additional source of variation in anther height derives from differences in growth of filaments, where anthers are attached to the corolla. Faivre (2000) observed slightly longer filaments in the short-styled (thrum) forms of *P. chiapensis* and *P. poeppigiana*, but specifically not in *B. ternifolia*. Thus both growth patterns for anthers are found within the family Rubiaceae, although in *H. caerulea*, filament length did not affect anther height. Riveros et al. (1995) did not report on this trait in *H. salzmanii*. Faivre (2000) suggests that measurement of filaments is easier in larger flowers perhaps explaining its limited use.

The two distylous *Hedyotis* species, however, differ in their patterns of stigma development. *Hedyotis caerulea* follows perhaps the most common model, as described for *Lithospermum* in the Boraginaneae (see Figure three in Cohen et al. 2012): in thrums, as the bud continues to grow, elongation of the stigma slows down or possibly levels off, producing a curvilinear growth pattern described by a second-order equation; in pins the stigma elongates at a constant (linear) rate. The complex stigma development of *H. caerulea* is not unique in the Rubiaceae, as a similar pattern was observed in *Guettarda scabra* (Richards and Koptur 1993). But, in *H. salzmanii* (Riveros et al. 1995) as well as in *P. chiapensis*, *P. poeppigiana* and *B. ternifolia* (Faivre 2000), differences in stigma height between morphs appear to arise from uniform variation in stylar growth.

The presence of different growth mechanisms has been applied to infer independent origins of heterostyly (Barrett 2002), and here would suggest separate evolution of distyly in *H. caerulea* and *H. salzmanii*. The question is how many variations on one theme can come about and why variation can be extensive even within a species (Sosenski et al. 2010). The answer may be changes based on existing variation, which, as Cohen et al. (2012) suggest, alleviate dependence on models requiring new mutations to produce herkogamy (e.g., Charlesworth and Charlesworth 1979; Barrett 1992; Lloyd and Webb 1992). They advocate a model modification described by Sakai and Toquenaga (2004), in that each breeding system originates from the genetic variation available in traits underlying pollination success. As an example. Baena-Díaz et al. (2012) suggest that diversity in stamen and style heights among populations of *Oxalis alpine* (Oxalidaceae), which are now exposed to limited pollinators, will be pushed by selection from the tristylous condition towards distyly. Keller et al. (2012) also highlight the potential importance

of population level variation similar to what we found in *H. caerulea* (here and in Sampson and Krebs 2012) to provide the basis for shifts towards distyly. Presently, population variation in distylous species is understudied, but occurs in some Boraginaceae (Ferrero et al. 2011) and the Iridaceae (Sánchez et al. 2010), but little was made of its presence. Clearly, more information on genetic variation and especially genetic linkage of traits related to distyly would be useful for discriminating among existing models (e.g., Darwin 1877 p 261; Lloyd and Webb 1992; Sakai and Toquenaga 2004) for the evolution of these complex mating systems.

Competing interests

The authors declare that there are no competing interests.

Authors' contributions

DS designed the study, collected all data and drafted the manuscript. RK assisted with analysis and revised the paper for publication. Both authors read and approved the final manuscript.

Acknowledgements

Dan Petit and Chuck Thomas granted collection permission and provided information on bluet localities within the Cleveland Metroparks.

Received: 22 May 2013 Accepted: 13 August 2013

Published: 14 August 2013

References

- Armbruster WS, Pérez-Barrales R, Arroyo J, Edwards ME, Vargas P (2006) Three-dimensional reciprocity of floral morphs in wild flax (*Linum suffruticosum*): a new twist on heterostyly. *New Phytol* 171:581–590
- Baena-Díaz F, Fornoni J, Sosenski P, Molina-Freaner FE, Weller SG, Pérez-Ishiwara R, Domínguez CA (2012) Changes in the reciprocal herkogamy during the tristylous-distylous transition in *Oxalis alpina* increase efficiency in pollen transfer. *J Evol Biol* 25:574–583
- Barrett SCH (1992) Heterostylous genetic polymorphisms: model systems for evolutionary analysis. In: Barrett SCH (ed) *Evolution and function of heterostyly*. Springer-Verlag, Berlin, Germany, pp 1–29
- Barrett SCH (2002) The evolution of plant sexual diversity. *Nat Rev Genet* 3:274–284
- Charlesworth D, Charlesworth B (1979) A model for the evolution of distyly. *Am Nat* 114:467–498
- Cohen JI (2010) "A case to which no parallel exists": the influence of Darwin's *Different Forms of Flowers*. *Am J Bot* 97:701–716
- Cohen JI (2011) A phylogenetic analysis of morphological and molecular characters of *Lithospermum* L. (Boraginaceae) and related taxa: evolutionary relationships and character evolution. *Cladistics* 27:559–580
- Cohen JI, Litt A, Davis JI (2012) Comparative floral development in *Lithospermum* (Boraginaceae) and implications for the evolution and development of heterostyly. *Am J Bot* 99:797–805
- Darwin C (1877) *The different forms of flowers on plants of the same species*. Murray, London
- Diggle PK (1992) Development and the evolution of plant reproductive characters. In: Wyatt RE (ed) *Ecology and evolution of plant reproduction*. Chapman and Hall, New York, pp 326–355
- Faivre AE (2000) Ontogenetic differences in heterostylous plants and implications for development from a herkogamous ancestor. *Evolution* 54:847–858
- Ferrero V, Chapela I, Arroyo J, Navarro L (2011) Reciprocal style polymorphisms are not easily categorised: the case of heterostyly in *Lithodora* and *Glandora* (Boraginaceae). *Plant Biol* 13(S1):7–18
- Friedman WE, Carmichael JS (1998) Heterochrony and developmental innovation: evolution of female gametophyte ontogeny in *Gnetum*, a highly apomorphic seed plant. *Evolution* 52:1016–1030
- Guerrant EO (1982) Neotenic evolution of *Delphinium nudicaule* (Ranunculaceae): a hummingbird-pollinated larkspur. *Evolution* 36:699–712
- Hernández A, Ornelas JF (2007) Development of distylous flowers and investment of biomass in male and female function in *Palicourea padifolia* (Rubiaceae). *Plant Biol* 9:694–704

- Hufford L (1995) Patterns of ontogenetic evolution in perianth diversification of *Besseya* (Scrophulariaceae). *Am J Bot* 82:655–680
- Keller B, de Vos JM, Conti E (2012) Decrease of sexual organ reciprocity between heterostylous primrose species, with possible functional and evolutionary implications. *Ann Bot* 110:1233–1244
- Kellogg EA (1990) Ontogenetic studies of florets in *Poa* (Gramineae): allometry and heterochrony. *Evolution* 44:1978–1989
- Lloyd D, Webb C (1992) The evolution of heterostyly. In: Barrett SCH (ed) *Evolution and function of heterostyly*. Springer-Verlag, Berlin, Germany, pp 157–178
- Ornduff R (1980) Heterostyly, population composition, and pollen flow in *Hedyotis caerulea*. *Am J Bot* 67:95–103
- Richards JH, Barrett SCH (1992) The development of heterostyly. In: Barrett SCH (ed) *Evolution and function of heterostyly*. Springer-Verlag, Berlin, Germany, pp 85–127
- Richards JH, Koptur S (1993) Floral variation and distyly in *Guetarda scabra* (Rubiaceae). *Am J Bot* 80:31–40
- Riveros M, Arroyo MTK, Humana AM (1987) An unusual kind of heterostyly in *Quinchamalium chilense* (Sanalaceae) on Volcan Casablanca, southern Chile. *Am J Bot* 74:1831–1834
- Riveros GM, Barria OR, Humana PAM (1995) Self-compatibility in distylous *Hedyotis salzmannii* (Rubiaceae). *Plant Syst Evol* 194:1–8
- Sakai S, Toquenaga Y (2004) Heterostyly: speciation within a species. *Pop Ecol* 46:253–262
- Sampson DA, Krebs RA (2012) Quantitative evaluation of reciprocal herkogamy in the distylous species, *Hedyotis caerulea* (Rubiaceae). *Plant Syst Evol* 298:1361–1370
- Sánchez JM, Ferrero V, Arroyo J, Navarro L (2010) Patterns of style polymorphism in five species of the South African genus *Nivenia* (Iridaceae). *Ann Bot* 106:321–330
- SAS (2002) SAS version 9.1 for Windows. SAS Institute, Cary, North Carolina, USA
- Sosenski P, Fornoni J, Molina-Freaner FE, Weller SG, Domínguez CA (2010) Changes in sexual organ reciprocity and phenotypic floral integration during the tristylous-distylous transition in *Oxalis alpina*. *New Phytol* 185:829–840
- Stirling J (1932) Studies of flowering in heterostyled and allied species Part 1. The Primulaceae. *Publ Hartley Bot Lab* 8:2–42
- Webster MA, Gilmartin PM (2006) Analysis of late stage flower development in *Primula vulgaris* reveals novel differences in cell morphology and temporal aspects of floral heteromorphy. *New Phytol* 171:591–603

doi:10.1186/2193-1801-2-383

Cite this article as: Sampson and Krebs: Developmental variation and the evolution of distyly in *Hedyotis caerulea* (Rubiaceae). *SpringerPlus* 2013 **2**:383.

Submit your manuscript to a SpringerOpen[®] journal and benefit from:

- Convenient online submission
- Rigorous peer review
- Immediate publication on acceptance
- Open access: articles freely available online
- High visibility within the field
- Retaining the copyright to your article

Submit your next manuscript at ► springeropen.com