

Homecoming 1964 Kicks Off Tonight

By Cheryl Hulk

Take a concert by Roger Williams, stir in a dash of drama, mix in a liberal amount of football, plus a beautiful Homecoming Queen, top it all off with a campus full of UPS students, both old and new; bake in an atmosphere of excitement and the result is UPS HOME-COMING 1964.

Festivities begin tonight with the first presentation of the Homecoming play, "Every Family Has One," and the crowning of the Homecoming King and Queen. The pair will reign over the weekend festivities. (For autobiographical sketches on each candidate, see page 5.)

Highlighting tomorrow's activities will be the Roger Williams concert scheduled for 8:30 p.m. in the Fieldhouse. Thursday's other big event will be the Homecoming banquet where students will enjoy a taste of old Germany. The banquet is scheduled to begin at 5:15 p.m.

Kicking off Friday's activities will be the traditional bike race in Sut-

ton Quad, slated for 2:30 p.m. Men from each living group will attempt to peddle their way to victory and a trophy. Friday at Four entertainment in Cellar 10 and the second performance of the Homecoming Play at 7:30 p.m. will keep students and alums busy till time for the big event of the day, the Torchlight Parade. At 10 p.m. torches will be lit for the parade around campus and the judging of the Homecoming displays. Following the parade students can warm up around a bonfire in the Fieldhouse parking lot and then use up any excess energy by dancing to live music in the Student Center till 1 a.m.

Saturday's events begin with 10:30 brunch in the South Dining Hall and conclude with the highlight of Homecoming festivities, the Homecoming dance, set for 9:00 p.m. During the hours between these two events a car caravan will wind its way through Tacoma proper and the age-old Homecoming football battle will be

fought with PLU on Baker Memorial Field.

"Boulevards of the World", the Homecoming semi-formal dance, will feature five well known bands including the Jazz Crusaders with Jay Thompson; 15 piece Norm Hoagy orchestra; Bob Elliot's jazz band, the Solitudes, a swing group; and a Dixieland band. The bands will be housed in various rooms of the Student Center.

Homecoming, 1964 will conclude Sunday with 9:30 and 11:00 a.m. services at Mason Methodist Church.

General chairmen for the UPS Homecoming are Judy Hugo and Fred Kirch. Other committee chairmen include Leslie Miller and Jay Thompson, dance; Chuck Cooper and Denny Hinton, publicity; George Palo and Rick Boling, spirit night; Al Benaroya and Wally Crow, displays; Pam Besel and Dinah Claf-lin, royalty; Janet McClellan and Janet Main, banquets; Sally Raymond, decorations; and Diane Longanecker and Sue Roth buttons.



The Norm Hoagy orchestra will be one of five featured Bands at the 1964 Homecoming dance.

Roger Williams Is Featured For Homecoming Festivities

By Tami Morrell

Artists and Lectures Series will present Roger Williams on Thursday, Oct. 8, at 8 p.m. in the UPS Fieldhouse. Tickets are available at the UPS Bookstore and Ted Brown's Music Store in Tacoma. UPS student, professors and family will be admitted for \$1.50 and \$2.50. The general public will be charged \$4.00.

A Roger Williams concert has become a major musical event throughout the United States and Canada. And it's no wonder. Even though Mr. Williams changes his concert repertoire each year, he still manages to practice 10 hours for every minute that he appears on stage. This his rise to fame is no accident.

"Mr. Piano," has played in concert for over 2 million people. His albums have passed the 6 million mark. This establishes an all-time sales record for an instrumentalist.

In cluded in his UPS concert will be music and comedy, selections from the classics to the current musical trend, and show tunes. Mr. Williams will also play some of his favorite hits, among them "Autumn Leaves." No exception will be his traditional finale of playing two pianos at once. And he is likely to play one song with his right hand and another with his left. Surprisingly enough, Roger manages to bring beautiful music out of this seeming chaotic melange.



Roger Williams

In Mr. Williams own words "music is an art that can express the composer's and performer's feelings. When I play, I try to tell the audience what the composer wanted to say. I memorize all the words and then phrase my melody line just as a singer would. In that way I believe their is more meaning and depth to my work." With such dedication there is little doubt that Roger Williams' concert will be exceptional.

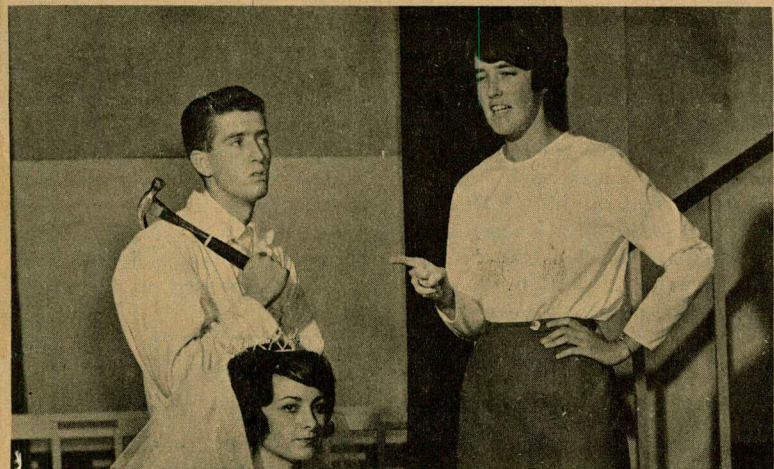
The TRAIL

University
of
Puget Sound



1964-1965 No. 2

October 8, 1964



JIM HULL, Mr. Reardon, wonders as Nana, Betsy Fox, lays down the law to her grand-daughter Marcia (Georgia Depue), about whom she will marry in the play "Every Family Has One".
—Photo by Art Bachelor

"Every Family Has One" To Be Presented Tonight

The Campus Playcrafters, as part of the Homecoming activities, will present the delightful farce-comedy "Every Family Has One, by George Batson, Wednesday, Oct. 7 and Friday, Oct. 9, at 7:30 in Jones Hall Auditorium. The play is under the direction of Martha Pearl Jones and technical direction of Dr. Wilbur Baisinger.

Every family has one what? Why, every family has a skeleton in the closet, of course. The skeleton isn't always this cute, though. How does a wise-cracking grandmother get rid of a rich, near, son-in-law? He imports a zany but adorable cousin from back home to be the skeleton.

This three-act parody includes Dick Jones and Jana Runnion as Mr. and Mrs. Parker and John Ullis as their son, Sherwin. The Parkers desire to merge in business with the Reardon family,

portrayed by Willa Ford as the mother, Laura and Jim Hull as Reginald the father, by marrying their son to Marcia Reardon, played by Georgia Depue. The conniving antics of Nana and the help of Penelope, Lily, and Worry, played by Betsy Fox, Voski Chakarian, Nancy Kunze and Frank Harmier, add to the humor of the frenzied group. Janet Main as Essie the maid and Roy Wilson as Steve Galloway add more laughs and romance to the play.

Torchlight Parade Shows Campus Life, Spirit

One of the more exciting aspects of Homecoming is the annual torchlight parade. This will be on Oct. 8 and at this time all students and the display judges will be able to tour the exhibits assembled by each living group. The general theme is "campus life" and as can be seen by the following, originality reigns.

The Theta Chi group plans on a huge cash register with a hand labeled UPS reaching into the till. The "total windows" will read, "Beat the Knights."

Right behind a huge welcome sign for the alums, the Delta Colony will have a figi cooking over a huge stew pot with the PLU players on a large rotisserie. Naturally a logger will be keeping the fire going by chopping wood.

Alpha Phi and Thetas will join forces and display a drilling rig. This will be close to the hearts of all of us who have had to strain to hear a quiet professor during "working hours!"

The Sigma Chis plan a Knight on a horse and a Logger with a hatchet. Right beside the "Welcome Alums" sign will be the logger cutting off the Knight's head!

Plans for other group displays were not available at publication time. Work can begin at 8 a.m. tomorrow and must be completed by noon on Friday.

Judges will look for the usual crowd appeal and originality with a special interest as to how well the alums have been included.

1964 Homecoming Schedule

Wednesday, October 7

7:30 PM — Homecoming Play "Every Family Has One" codemy

Thursday, October 8

5:15 PM — German banquet (South Dining Hall)

8:00 PM — Roger Williams Concert

Friday, October 9

2:30 PM — Bike Race (Sutton Quad)

4:00 PM — Friday-at-Four (Sub)

7:30 PM — Homecoming Play

10:00 PM — Torchlight Parade

10:45 PM — Bonfire (Fieldhouse Parking Lot) Dance (Sub)

Saturday, October 10

10:30 AM — Brunch (no breakfast served)

12:00 PM — Alumni Annual Luncheon

Car Caravan (Sub and through town)

1:30 PM — Game with PLU (Baker stadium)

9:00 PM — Homecoming Dance "Boulevards of the World"

Sunday, October 11

9:30 AM — Homecoming Church Service (Mason Methodist)

11:00 AM — Homecoming Church Service (Mason Methodist)

PUGET SOUND TRAIL

EDITOR CHERYL HULK
 NEWS EDITOR Suzie Buell, Rich Mulkey
 SPORTS EDITOR ED ADAMS
 FEATURE EDITOR DENNY HALE
 BUSINESS EDITOR KARL ULLIS
 SOCIAL EDITOR ANITA STERLING
 CIRCULATION DOUG SMITH

REPORTERS: Sue Leth, Karyl Krah, Mary Ann Eddy, Lexi Roberts, Tami Morrell, Judy Ayer, Jean Hunter, Martin Carr, Gwynne Evans, Faith Claypool, Barbara Souther, Jim Hoye, Kathleen Heritage, Shirley Beebe, Linn Johnson, John Pierce, Brian Kearns, Georgia Buell, Davey Jones.

PHOTOGRAPHY: Jerry Blank, John Kienast, Steve Perry, Doug Smith.

A campus newspaper published weekly (Wednesday) except vacation and testing periods during the academic year by the ASBUPS. Phone SK 9-3521, Ext. 763. Located at 1500 North Warner, Tacoma. Yearly subscription rates are three dollars. Entered as second-class postage paid at Tacoma, Washington.

Editorial Comment

Lack of communication between the leaders of student government and the rest of the student body has always been a problem at UPS.

The student body has no idea how their money—some \$48,000—is being spent by central board. No one has the time to attend CB meetings or the inclination to pick up a copy of the minutes.

Thus, the Trail would offer a solution to this problem which would take little effort on the part of anyone. Each living group—Greek and Independent—could send a representative to central board each week and then have him report back to the group at the next meeting. If the group or individuals had any suggestions for CN, they could express them through their representatives.

A suggestion has been made, but does anyone care enough to utilize it?

C. B. LOWDOWN

By John Pierce

Although there was plenty of action at the last Central board meeting, few results are to be found. The two hour meeting saw most of the issues postponed until next week. The big issue—the ASB budget—was tabled because of insufficient information concerning it. One would think that those concerned with \$48,000 would have greater resources available at the meeting.

One significant decision within the budget was made. Central Board decided — as indicated by the amount of money budgeted — that all-school ASB functions, such as a masquerade party, are more important than a Student Administration sponsored public affairs forum. The decision was affected by something called "the greatest good for the greatest number of students."

Again the perennial cry against student apathy towards athletic events was raised. To some people it seems unforgivable for one to miss a football game. The plea was made for every CB member to run through the dorms and drag his constituents out to the

game. It's an odd thing, but some people just do not want to go. There are those, and many it seems, who just have no interest. This is their right — to do what they wish with the little spare time they have. Every Thursday morning at 10 a.m. we don't see all the Student Christian Council members running through the library and dragging people off to Chapel. Each student has paid his fees; each may choose to use it in different ways. So, those who like football, let's go to the game and scream and holler. Those who don't, well, see you in the library or the dorm or wherever.

UPS Alum Is Now Embassy Official

Now stationed in Djakarta, Indonesia as Deputy Chief of Mission at the American Embassy is Francis J. (Bud) Galbraith, a 1939 graduate of UPS.

Graduated *magna cum laude*, Galbraith was a member of Kappa Sigma Fraternity, then known as Sigma Zeta Epsilon, and the Inter-Collegiate Knights, which were known as the Knights of Log in 1939.

After being graduated from UPS, Galbraith did post-graduate work at the University of Washington where he received his B.A. in Library Science. During 1940-41 he held the position of reference librarian at the University of Washington.



Francis J. Galbraith, UPS alum, is in Djakarta, Indonesia, where he is deputy chief of mission at the American Embassy.

As 2nd Lieutenant in the Army during World War II, Galbraith was stationed in the Fiji Islands, Australia, and New Guinea, as well as in the Indonesian archipelago. After the war, he returned to Washington D.C. where he applied for a position in the foreign service. His stay in Washington D.C. was followed by two years refugee work in Germany. He then returned to the United States and Yale University.

At Yale, Galbraith studied under Professor Isadore Dyen, a linguist specializing in the Mayo-Polynesian languages.

After his post-graduate study, Galbraith was sent to Djakarta, Indonesia in 1949 to 1951 as a political officer in the American Embassy. Since then his time has been spent mostly in the Far East as consul in Medan, Sumatra and Indonesia. In 1948, Galbraith was sent to London as the first secretary. From 1962 until the present he has held the title of Deputy Chief of Mission at Kjakarta, Indonesia.

Galbraith has written the Alumni Office at UPS that he "hopes" to attend the Class of 1939 reunion this weekend during Homecoming.

CONFUCIUS SAY—

"Girl with beautiful eyes soon put man on blink!"
 "Cynic is man bored with sinning!"
 "White lies, like red roses very important to romance!"
 "Two-faced man smell twice as much . . . and stink too!"
 "Girl with future . . . beware of man with past!"
 "Better for man to first get something in eye and wink, than wink . . . and then get something in eye!"

Magee Plans Religious Book

By DAVY JONES

Dr. John Magee, professor of philosophy and religion at UPS, since late in the last school year has directed much of his spare time towards the writing of his forthcoming book *Reality and Man's Ultimate Concern*.

Professor Magee was born in Vermont and move to Seattle with his family as a boy. He attended school there and was graduated from the University of Washington. Dr. Magee continued his education at Boston University for three years for his theological degree. In the last of his college endeavors he secured his doctoral degree from Harvard University.

In 1945 Professor Magee joined the faculty of Morning Side College located in Sioux City, Iowa. It was with this background that he arrived on the UPS campus in 1947.

Dr. Magee said "Since 1945 I have taught a beginning religion course. My students have asked many of the same basic questions concerning this subject."

The professor went on to say that he has collected these questions and in his present project has provided some fundamental answers. With this knowledge under his belt the student can progress into higher religious concepts.

"The title expresses the basic underlying point of my book. If you do not know what religion is about you are really not educated," Dr. Magee said.

The present outline of *Reality and Man's Ultimate Concern* took five years to develop. After numerous revisions author Magee reached the point last year where

the outline "was a good enough one to lean on. Writing is very hard. I can not work without an outline." He said.



Dr. John McGee looks over parts of his unfinished manuscript.

—By Doug Smith

In the spring of 1963 he wrote a chapter per week. This year the chapters were written in larger blocks of time, (14 chapters from February to August 15). As of this date Professor Magee has six more chapters yet to put down in black and white. The manuscript in its entirety is due at Harper & Row on November 15. The deadline for the completed and revised copy is December 1, 1965.

Dr. Magee commented "the family suffers when one writes. The University of Puget Sound gives no time off for writing. You must do it along with the regular work." (His daughters did the assembling of the present paper bound form of the book during the summer).

The tall UPS author welcomes "criticisms, questions, or suggestions from the readers. Now is the time to make them." The incomplete version of the book may be purchased in the bookstore.

Kita - Kyushu Korner

By Lynn Johnson

In trying to find the value of our UPS-KKU sister university relationship, students have asked me questions such as, what does it consist of? How can the UPS student-body receive the benefits?

Let me try to define the sister-university intention. Briefly, it is a special focus of attention between the students of one university and the students of another in a different nation and culture. For each student the relationship can serve as a modified "hot line" between the two specific schools. The organizing committees (Sister University Committee of UPS; Committee for International Cultural Interchange of KKU) serve as relay boxes of communication for students of either school who desire academic information, names, addresses, statistics or letter translations from the other.

It is my opinion that an adequate international understanding cannot be obtained in this complex age through only academic study, not through brief communication with many countries of the world, nor through a thirty second conversation with a foreign student, nor through just tourism—since tourism is essentially independent study sprinkled with prestige. However, understanding can be obtained by

slowing down, concentrating efforts into a workable area such as one university, bonding academic study to good communication, and actually involving your mind. Try trying to see the similarities and differences among the students' opinions, attitudes, values, tastes, activities and ideals in another culture.

By "good" communication I mean sincere personal "aerogrammic Discourse" between individuals in each Sister-University. Even though many people associate the name "Pen Pal" with elementary school, the basic idea is mature, flexible, and has unlimited possibilities on the Sister-University level. For the students of either school, then, the benefits range from valuable expansion of their liberal arts education and understanding, to new friendships. I found that many specific questions I was asked this Summer at KKU were difficult to answer properly without my having a major in every department at UPS. Many of these questions could have been answered clearly by mail from a student who majors in that specific area. I was asked questions ranging from pre-dentistry to 19th Century English literature.



NEWS AND VIEWS

By Dennis Hale

Humphrey's Visit In Retrospect

The pace of a jet-propelled, Presidential campaign is startling and almost awesome to the immobile observer. Last Thursday's visit by the dynamic Minnesota Senator illustrates well the dizzying velocity of a 50-State political tour. Humphrey arrived at 5:30 p.m., held a press conference at 6:30 p.m., spoke at UPS at 8:30 p.m., returned to the hotel for sleep and left the following morning at 7:00 a.m.

Half-Hour Speech

The brevity of Humphrey's visit in no way clouded the meaning of the message he delivered. The meat and significance of Humphrey's speech came mid-way through the 17-page, half-hour address, when he stated:

"We are witnessing a strange phenomenon in American History, a strident minority pretending to speak for a major party."

"Senator Goldwater makes a clean break with past Republican policies — and, indeed, with the bipartisan consensus of both parties for the past two decades — on the great issues of war and peace.

Humphrey meant that American domestic and foreign policy has vacillated around a norm from Roosevelt, through Truman and Eisenhower, to Kennedy and Johnson. A strong continuity exists between these moderate administrations. But Goldwater policy, Humphrey would reason, is incongruous with this norm of three and a half decades. Goldwaterism threatens the life of this norm. Goldwater policy could not be charted on the same graph.



Senator Humphrey talks to Jackson at press conference.

—By Jerry Blank

Press Conference

The press conference held at the Hyatt House adjacent to the Seattle-Tacoma Airport illuminated the wheeler-dealer Humphrey whose spontaneous wit can sardonically lash back like a bull whip. When questioned about his affiliation with the ADA he struck back, "I'm a Democrat without prefix, suffix or apology. All my views are a matter of Congressional record. If the Republicans want to chew on that old stick — let them go ahead." In the lush confines of the motor-hotel, conference room, cluttered with seven microphones, three tape recorders, 14 telephones,

Knights, Spurs Service Honorary

Many campus services are performed by the men and women of the sophomore service honoraries, Intercollegiate Knights and Spurs. Members of these honoraries are chosen on the basis of academics, spirit, and participation in campus activities.

The men's honorary, the Knights, have already sponsored two dances, ushered at the field-house during Freshmen Orientation and have helped at registration. They will also usher each week at University Chapel and at the Homecoming services at Mason Methodist Church this weekend. Convocation ushering and other service projects will also be part of their program.

This year's officers are: Ric Draughon, president; Cal Peterson, vice president; and Al Campbell, secretary-treasurer.

The women's honorary, the Spurs, usher at campus plays, help at registration, sell "fruit for finals" when many students cannot eat regular meals, send Spur-O-Grams on Valentine's Day, decorate Jones Hall for Christmas, usher at Chapel, and as a community service project have adopted a grandmother. The UPS Spurs are proud to have the National Spur President, Kittie Zittel.

This year's Spur officers are: Libby Brown, president; Dorothy Miller, vice president; Sue Borden, secretary; and Sue Wiley, treasurer.

Karlstrom Speaks On Life and Death

Ernest Karlstrom, an associate professor of biology here at UPS, will be the speaker at Chapel tomorrow. His message is titled: "Mercy: Preserving and Extinguishing Human Life."

Karlstrom feels there is a need for education about death as well as life, and he will explore the conflict between medicine and Christianity over the dignity of death.

transports he commented that with the help of Senator Jackson enough funds had been appropriated by the government to go ahead.

Humphrey terminated the conference by commenting on the recent FCC ruling that Johnson's press conferences would be treated as political announcements and subject to the previous "equal time for each political party" ruling. Referring to his opponents he stated, "if I had my way I'd like to double their time." With this note of mirth the 18-minute conference ended and the Senator left as quietly as he had entered, by the side exit.



SENATOR HUMPHREY waves to audience during speech at Fieldhouse.

—By Jerry Blank

Attacks Goldwater

Humphrey based his attack of Goldwater on the Senator's 12-year congressional voting record and the opinions he has expressed in "Conscience of a Conservative" and "Why Not Victory?" Humphrey ignores the views of the new, expedient, moderate Goldwater and his metamorphosis of the last four months.

Humphrey's statement that Goldwaterites represent a minority that has "worked constantly to capture the Republican party," drew vocal protest as did his mention of medicare and the first appearance of Governor Rosellini. The numerous Republicans present made the crowd of 6,000 more bipartisan than expected.

seven typewriters, a teletype and two long rows of green tables, the Senator answered more questions to the erratic buzz of four movie cameras and clicks of press cameras.

He showed special courtesy to Mr. Kenworthy, a reporter traveling with the Humphrey delegation from the New York Times. In the focus of the five flood lights the Senator said he didn't think it careless the way President Johnson mingled with crowds, and that you were probably safer in a crowd than when standing alone. He said he couldn't say whether the Civil Rights Bill would or wouldn't have passed if put to a popular vote. On the subject of supersonic

"THE RAIN"

By Lorrie Cunningham

*I like the rain
That falls on the terrain
Again and again.*

*I have to like the rain
That again and again
Falls on the terrain,*

*Because I'll probably always live on the terrain
Where falls the rain
Again and again.*

*I tell myself again and again
I like the rain
That falls on the terrain.*

*(Actually I think there's too little terrain
For all the rain
Falling again and again.)*

*(Actually the rain
Gives me a pain.)*

Proctor House Restaurant

CLOSE TO UPS

Special Lunch Daily .96c
Large Choice of Foods
at Reasonable Prices

11 a.m. - 8 p.m. Daily
Closed Sundays

2514 No. Proctor
SK 9-8665

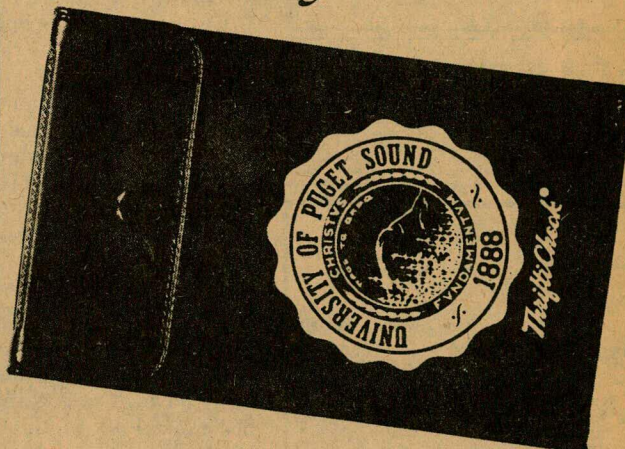
HUNGRY THIRSTY LONESOME

TRY PAT'S
No. 21st & Oakes

HOWELL

SPORTING GOODS, Inc.
922 Commerce

This is the Bank for your Checking Account



This checkbook cover is yours FREE when you open your ThriftiCheck account. You'll always know what bills you've paid and the money you have left. You can deposit earnings or allowance directly to your account. We pay postage both ways. Save time and trouble. Just 10 cents a check is your total cost.

ways.

THE BANK OF CALIFORNIA

NATIONAL ASSOCIATION

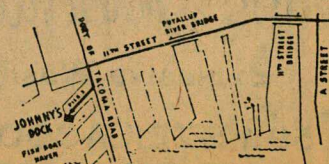
Only bank with direct offices in all three west coast states

1011 PACIFIC AVENUE • TACOMA

**AFTER THE GAME
AFTER THE DANCE
ANYTIME!**

LET'S MEET AT
JOHNNY'S DOCK
A GOOD PLACE TO EAT

**Specializing in
Steaks ★ Seafood
Cocktails**



Tax Experts Study Changes in '64 Law

Two hundred and eighty-two experts on taxes attended a tax executives institute at UPS recently.

These men and women were licensed Public Accountants, Certified Public Accountants, and Tax Attorneys who have been called the backbone of Northwest business.

Nearly the entire forum was devoted to the Revenue Act of 1964. This concerned the corporate and individual tax changes.

Among the noted guests were Donald W. Bacon, assistant commissioner of Internal Revenue Service, Wash. D.C., District Director Neal Warren, representatives from the Appellate Division.

— Complete —

FOOD SERVICE

plus

FOUNTAIN

OPEN TILL
MIDNIGHT

**VICTORY
STORE**

BABY-SITTING Anytime

SK 2-8043

Watch and Jewelry Repair



GUARANTEED

2707 SIXTH AVENUE

BR 2-3063

WAHLGREN'S

**Fine Florists
WE DELIVER**

205 No. Yakima MA 7-0127

UPS Site for Convention

PEOPLE TO PEOPLE—

A new organization has been formed on the UPS campus which acts as a "buffer group" for the other foreign student groups on campus concerning foreign relations and students. This group, **People-to-People**, will highlight its year the weekend of Oct. 17-18, when 48 People-to-People University chapters of the Pacific Northwest and Alaska hold their semi-annual convention at UPS.

Approximately 80 guest delegates and the 12 member and 10 chairman from UP Sare expected to be on campus for the convention. The climax of the convention will be the public address of Mr. Frank Mankiewicz, associate director of the Peace Corps for the region of Latin America at 4 p.m., Saturday, Oct. 17, in the Jones Auditorium. The public is invited and Mankiewicz will also be available for informal questioning.

The national organization of People-to-People was founded in 1956. A direct result of this pro-

gram are the foreign students in many high schools. 1960 marked the offshoot of this program on college campuses being called People-to-People University Program. It is based on the idea of promoting mutual understanding and an appreciation of one another's way of life."

National membership in the program required \$2.50 annual dues, but non-paying associate members are encouraged to come to the meetings and take part in the activities. People-to-People meet every Monday at noon in room 9 of the SUB.

Frosh Officers Plan Activities

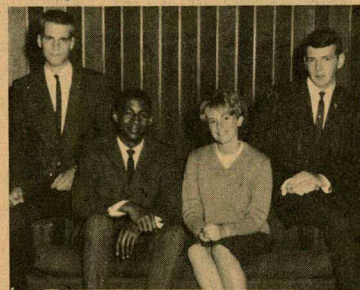
This year's freshman class officers have already begun to plan activities for the Class of 1968. During high school, each one played an active part in school organization.

Terry Graff, this year's freshman class president, comes to UPS from Longview, Wash. He seems to have a great interest in class organization. As a junior, Terry was the class president of R. A. Long High School. He was an active member of the board of control, student council and honor society. He was also a boys' club officer. Terry has many new ideas for the freshman class. Among his suggestions are: expanding the freshman council, establishing better union between class members, and increasing participation of class members as a whole. Terry is an SAE pledge.

Craig Haines, this year's freshman class vice president, is from Salem, Ore. Craig is interested in becoming a Methodist youth worker. Craig was active in school activities before coming to UPS. He was an ASB an dclass representative and chairman of the ASB projects committee. This year, along with his freshman officer duties, Craig plans to play football.

Gretchen Delius, secretary-treasurer, comes to UPS from Queen Anne High School in Seattle. Gretchen was also an active participant in high school. She

belonged to many social clubs, the Junior Orthopedic Guild, and worked as a circulation manager for her high school newspaper. Gretchen, now a Tri Delta pledge, belongs to the OT Club and plans to major in occupational therapy.



Pictured above are the newly elected freshman class officers. From L to R: Terry Graff, president; Louis Smith, sergeant-at-arms; Gretchen Delius, secretary; and Craig Haines, vice-president.

Louis Smith, sergeant-at-arms, comes to us from Garfield High School in Seattle. When asked what his plans were for the class, Louis answered, "To present the freshman class a well-organized program to stimulate the better qualities of a diverse generation." He, too, was active in high school organizations. Not only was Louis the sergeant-at-arms for the Lettermen's Club in high school, but he played football, baseball, and basketball. This year Louis plans to aid student government and continue his athletic activities.

Dr. Simonson Returns to UPS

By JIM HOYE

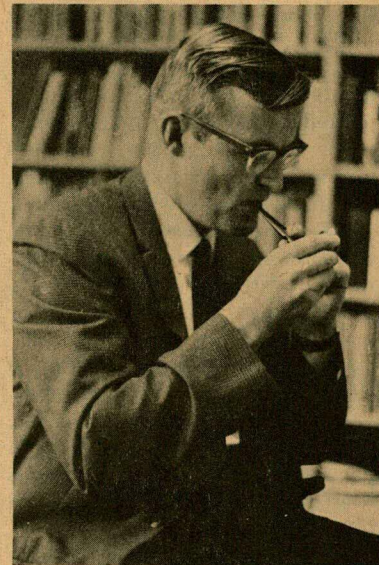
Dr. Harold P. Simonson, who has returned to his post as head of the English department after a year's absence, recently published an article in *The Antioch Review* entitled "Frederick Jackson Turner, Frontier History as Art" which has merited selection by the United States Information Service as a work to be translated and distributed to foreign offices.

Dr. Simonson's article is primarily a defense of Turner's poetic language in his essay, "The Significance of the Frontier in American History," which Dr. Simonson had previously edited and written a preface to, and is directed at pointing out the essentialness of Turner's poetic symbols to the historical material he is writing about.

Dr. Simonson attributes his interest in Turner to his studies under Ray Allen Billington of Northwestern University, who is one of our foremost authorities on the Frontier; his own researching in the Wisconsin State Historical Society while writing a book on Zona Dale, who happens to live in the same town as Turner, Portage, Wisc., and his general interest in American Literature of the Midwest. This interest in Midwest literature is

also reflected in a new book of his entitled *A Critical Biography of Francis Grierson*, who is a Midwestern writer both of and about the Civil War period.

Other material written by Dr. Simonson includes, "From Language to Sacramento" appearing in *Motive* magazine of Oct., 1963, "The Essay as Art" appearing in *The Journal of the Conference on College Composition and Communication* of Feb., 1964, and a new short college rhetoric entitled *Writing Essays* which will soon be published by Harper and Rowe.



Dr. Harold P. Simonson has returned as head of the English Department after a year's absence.

—By Jerry Blank

ROTC Squadron Named in Honor of WWII Veteran

The Arnold Air Society is a national AFROTC honorary which was created in honor of General H. (Hap) Arnold in the summer of 1947. The organization is the only extra-curricular activity open exclusively to the AFROTC cadets.

The Ralph Brown Squadron at UPS was founded on Nov. 20, 1953, in memory of Major (Chaplain) Ralph W. Brown, a College of Puget Sound alumnus and former Tacoma resident. Chaplain Brown was captured by the Japanese in the fall of Bataan and later died a prisoner of war in Japan.

The mission of the Arnold Air Society is to further the mission, traditions, and concepts of the United States Air Force; to promote citizenship, and to create a more efficient relationship among AFROTC cadets.

Cadet Major James R. Sloan recently assumed command of the

(Continued on Page 5)

In discussing publication in general, Dr. Simonson said that he has found that it become easier to have one's works published after each successful publication. However, he added, that it is generally difficult for a teacher to find time to get work published because of the pressure of teaching and of participating in university affairs.

Also mentioned in discussion was the concept that the university has taken the place of the Renaissance Patron by freeing the writer from normal pressures of material sustenance in order to give him more opportunity to write. This phenomenon is reflected in such university posts as "Poet in Residence" and in the policy of some of the larger universities of giving scholars a minimum teaching load in expectation of continued and increased scholarly writing.

Dr. Simonson was graduated by UPS. He earned his Ph.D. at Northwestern University, taught for a year on a Fulbright Scholarship to Greece, and spent last year as a visiting scholar at Princeton Theological Seminary.



SALES · SERVICE · PARTS

Geno's Imported Cars, Inc.

Exclusive Washington Dealer

5911 STEILACOOM BLVD. S.W.
TACOMA, WASHINGTON · JU 8-1823



Expert Hair Styles
at Reasonable Prices

**PAUL'S
DESIGNS**

203 North 21st Street
Mr. Paul German
Proprietor
Telephone SK 2-6190

**TONY'S
BARBER SHOP**

TONY — RAY — KEN
Props.

3814½ North 26th

**North Proctor
Bowl**

3806 N. 26th

FOR YOUR BOWLING
PARTIES

SK 2-5200

McIntyre Hall Planned for '65 Success Depends on Well

By Sue Leth

Is UPS overcrowded? Are its students being crammed into small, over-filled classrooms? Is there any solution to this problem? The answer to all these questions is decidedly "Yes!"

The future Charles Edwin McIntyre Memorial Hall will supply the campus with additional lecture and classroom space besides providing facility for the Schools of Business Administration and Social Sciences and housing the All-University Placement Bureau. It will also contain two amphitheater lecture and discussion rooms with a capacity of 400, and an experimental laboratory for the psychology department, and several classrooms, seminar rooms, and faculty offices. This four story structure will furnish space for nearly 1,000 additional students when in full use.

Construction of this building is being made possible through the contributions of Mr. and Mrs. George F. Jewett, Jr., of Lewiston, Idaho. It will be in memory of the late Charles Edwin McIntyre, a distinguished citizen and businessman of Tacoma. Present plans call for near-completion of the building by fall semester, 1965.

ROTC (Cont.)

900th Air Force ROTC Cadet Corps. Sloan is a senior in political science and will receive his degree and commission in June. The commander has the responsibility of organizing, planning, and conducting all phases of the leadership training program.

Assuming command of the AF ROTC drill team is Cadet 1st Lt. Clay Schmidt, who is a junior majoring in elementary education. The drill team, which is an extra curricular activity open to AFROTC cadets, is making plans to compete against drill teams from the University of Washington, Central Washington State College and Washington State University. In addition to competition, they will be making appearances at UPS athletic events and will perform color guard and honor guard services for UPS activities.

ANGEL FLIGHT HISTORY

The equivalent to the Ralph Brown Squadron AFROTC is the honorary service organization for selected coeds, Angel Flight.

The history of Angel Flight begins at the University of Omaha in Feb., 1952, where a group known as the "Sponsor Corps" was organized. This new concept quickly spread and by 1957 the "Angel Flight" had become a national idea.

The local Angel Flight is the coed auxiliary of the Ralph Brown Squadron of the Arnold Air Society. It was formed at UPS in March, 1962, with 12 regular and three honorary members. The present flight consists of 16 regular members.

The Angels act as official hostesses for the AFROTC social activities at the University of Puget Sound.

Will Well Succeed

Final completion, however, depends on another project which is presently underway on campus. This is the well-drilling expedition taking place in front of Jones Hall. This activity has been in progress since early this past summer. Its purpose is to locate an abundant underground warm water supply for the University's heating plant system. If a large enough supply is located, the warm water will be circulated through the water pipes in Howarth and McIntyre halls as an economical means of supplying heat. This water will then be sent to another well for regular use.

So far, the well-driller has reached a depth of over 800 feet with no great success. It is not known how much longer the drilling will be continued. But the water must be located before the Charles Edwin McIntyre Memorial Hall can be completed.

Social News

Pi Beta Phi

Three Pi Phi seniors have recently announced their engagements. During the summer Ann Driver became engaged to Dan Buchanan an SAE from UPS, and Jan O'Farrell announced her engagement to Dave Garner, also an SAE from UPS. During the first meeting of the year, Diane Davidson told of her engagement to Dave Johnson, a law student at Idaho.

Alpha Phi

The new Alpha Phi pledge officers were selected last week. They are Karen Hemila, president; Suzanne Scherdin, vice president; Judy Lanzendorfer, secretary; Suzie Buell, treasurer; Dian Besel, standards and chaplain; Gracia Alkema, philanthropy; Rudi Bates, chairman; Patti Summers, music chairman.

Sigma Alpha Epsilon

Six men were recently initiated into the brotherhood of SAE. They are Mike McCloud, Al Howe, Jerry Reilly, Tom Nutter, Ken White, and Brian Tassin.

Dan Martin, also an SAE, recently announced his marriage to Shirley Griffiths, who is a sophomore at Grays Harbor College. They are making their home in Aberdeen.

Sigma Chi

Dean Norman Thomas and Dr. Frank Peterson have been asked by Scholarship Chairman, Russ McCurdy, to speak to the Sigma Chi fraternity on the fundamentals of how to study and how to retain what you have studied. In the designated five-week program, Dean Norman Thomas and Dr. Frank Peterson have planned to cover time allotment, self discipline, and how one's "ability, interest, and achievement" can produce a well rounded student.

Sigma Nu

Ed. Note: The Trail regrets printing Sigma Nu's 33rd Pledge Class under the title of Sigma Chi in last week's issue of The Trail.

The men of Sigma Nu pledged 21 men out of formal rush. They are: Tom Albright, Dave Crutcher, John Ortmeyer, Jack Kienast, Mike Lantz, Steve Kneeshaw, Rockey Heald, Steve Helgerson, Brian Irwin, Tom Denzer, George Gagliardi, Barry Rice, Chris Mitchell, Ray Fife, Dave Hopkins, Don McCann, Tom Gerber, Dan Pender, Garry Wanner, Steve White. The officers of the 33rd pledge class are: Pres. Don McCann, vice-pres. Ray Fife, sec-treas. Tom Gerber, Sgt. at Arms Berry Rice and Chaplain, Tom Albright.

The Trail regrets that Greek and Social news can be used only as space allows.

Fast Cash!

(with your name on it)



Kittie Zittel was recently chosen National Spur President.

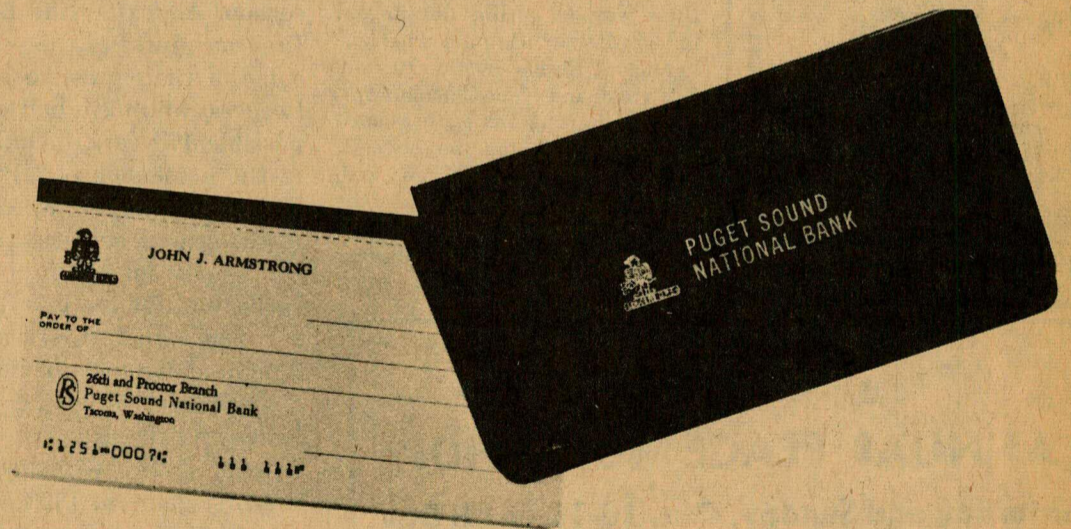
Kittie Zittel Receives Honor

Kittie Zittel, a junior majoring in Religion, was chosen National Spur President at the convention held this summer at Arizona State University. The convention, which meets every two years, is made up of six regions which encompasses states from Washington to Illinois.

Kittie also received the special honor of being presented the original pin of the first national president. In two years, when her office is terminated, the pin will be presented to the new president.

Kittie's many activities, besides being president of the local Spur chapter, include being chosen Spur of the moment and Spur of the year, include rush chairman for Pi Beta Phi sorority, the Honors Program, and Campus Playcrafters, as well as being chosen as one of two outstanding sophomores by Mortar Board.

In two years the convention will meet in Denver, Colorado. The site of the conventions are selected from one of the six regions and held at different campuses each time.



Let us keep you supplied with free checks — each imprinted with your name and the UPS Logger insignia. You pay only 10¢ for each check used. (The spoiled ones are on us.) Puget Sound ECON-O-CHECKS are safer, easier, faster and more convenient than paying bills by cash. And look at these other ECON-O-CHECK advantages:

- No minimum balance required
- No monthly service charge
- You have a convenient record of expenses
- Any amount opens an ECON-O-CHECK account

Stop in soon and open your personal ECON-O-CHECK account. Students and faculty members alike have always found the Puget Sound National Bank a friendly, convenient place to do all their banking.



PUGET SOUND NATIONAL BANK

Tacoma's Friendly Bank

member FDIC

Swift Pirates Roll Past Outmanned Loggers 27-13

By Edward Adams

The lack of a substantial offensive game caught up with the University of Puget Sound Loggers Saturday afternoon as the Whitworth Pirates rolled to a 27-13 Evergreen Conference victory.

From the onset the Logger's offense was stymied by the Pirates stout defense. For on the

first play from scrimmage Mel Jackson fumbled on the UPS 21 yard line and the ball was recovered by Jock McLaughlin for the Pirates. As if this was not enough the Pirates scored with halfback Henry Hoshino carrying the ball over from 21 yards out. The kick was good and the Pirates led 7-0 at the end of only one minute and thirty seconds of play.

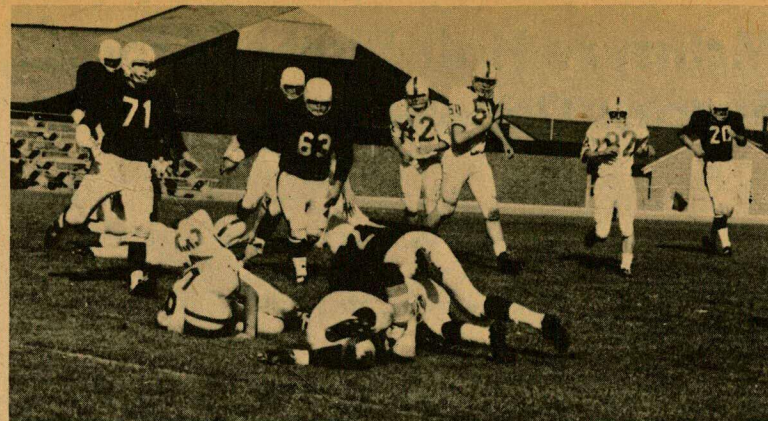
The Loggers were presented with their first scoring opportunity of the game when the Pirates fumbled on their own 40 yard marker and UPS recovered. Then with pin-point pass from Steve Maddocks to Loren Wall for 21 yards put the pigskin on the Whitworth 19 yard strip. A series of plays followed with freshman halfback Corky Diseth slashing his way to the Pirates one yard line. Then coupled with a five yard penalty and the inability of Mel Jackson to make the crucial yardage produced a triumphant Whitworth goal line stand.

After an exchange of downs Whitworth came up with the ball on the UPS 46 yard line. Quarterback Don Leebrick together with halfbacks Eddie Matthew and Monty Parratt, sustained a 46 yard drive which gave the Pirates a 13-0 edge over the UPS Loggers. This seemed insignificant to the Pirates though, as late in the first half they barraged their way to within the Logger ten yard strip. But the defensive heroics of Ron Glew, Joe Peyton, Jeff Hale, and Kent Chisman produced an exciting and badly needed goal line stand for the Loggers.

The second half began with the prediction of rout for the Loggers as the Pirates little 135 pound halfback Henry Hoshino scored on a 62 yard jaunt around

left end to make the score 20-0 in favor of the Pirates at the end of only two minutes of play in the second half. But a revitalized UPS offensive team produced a 49 yard drive highlighted by the bull-nose running of Corky Diseth and the clicking of the Maddocks to Peyton passing combination.

The drive was topped off by fullback Don Steward bulling over from the Whitworth's one yard marker, thus producing the first offensive score of the season for the Loggers. The Loggers second and final score came late in the fourth quarter as defensive tackle Norm Strom blocked a Whitworth punt with Joe Peyton recovering the ball and returning it to the Pirates 24 yard line. With freshman quarterback Dennis Bakke connecting on two passes to Joe Peyton for a tally, the Loggers closed the gap on Whitworth as the score stood at 20-13. Then with only three minutes to play and UPS in possession of the ball on their own 16 yard line the Pirates intercepted a Steve Maddocks pass. Whitworth quarterback Don Leebrick then scored from 13 yards out on a beautiful executed bootleg play



UPS Defensive Back Loren Wall makes tackle on Pirate quarterback Don Leebrick.

Upsets Mark Intramurals

The results of this week's football action in Men's Intramurals reveal a two way tie for first place and a promise of a lot of exciting action in the weeks to come.

The two toppers are the Kappa Sigs and the Phi Delt. They have both come through two engagements with two wins. Not far behind are the Sigma Nus and the Sigma Chis. In their opener, which resulted in a tie, both teams exhibited strong defense and an equally strong of-

fense. Both teams won their second quite handily; the Sigma Nus beating the SAEs 36-7 and the Sigma Chis beating New Dorm 21-0.

The teams to watch see to be the Sigma Nus and the Sigma Chis. Both have strong defenses and explosive offense patterns. Neither has met the two top teams, but when they do, there will be quite a battle and perhaps a change in the standings.

Kappa Sigma is the team to beat. Their strong line and fast backfield make them a double threat to any team they play. They met the Theta Chis and defeated them 27-0. They went out the next day to beat Todd Hall 40 to nothing.

Meanwhile, in the ranks of the elite, it is interesting to note that the Phi delts have not yet won a real game. They have won two games by forfeit from the Betas and Todd Hall. So, they remain somewhat of a dark horse at this point. Next week's action should determine their strengths.

In other action, the SAEs defeated the Betas in their opener, 26 to 0. the SAEs have one of the most powerful lines in the league, averaging close to 213 lbs. They seem to be having some problems co-ordinating their team effort.

This week's schedule has the Kappa Sigs playing the Betas and the Theta Chis going against Todd Hall on Tuesday; on Wednesday, the Phi Delt take the field against New Dorm, the Sigma Chis go against the SAEs, and in the game to watch, the Sigma Nus play the Kappa Sigs.

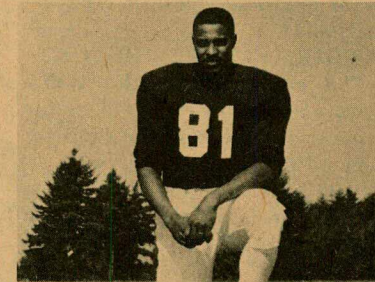
Pacific Lutheran Invades UPS for Homecoming Game

On October 10th, the University of Puget Sound Loggers play host to their cross-town arch rivals, the Pacific Lutheran University Knights, in the annual Homecoming game in the new John S. Baker Memorial Stadium. The game will culminate the week of Homecoming activities and will close the seasonal rivalry between the two schools for the year.

At stake in the game will be the Young Men's Business Club Totem Pole, which is the symbol of superiority between the two teams in their annual second meeting of the season. And after the Logger 7-6 victory over PLU in their first encounter of the year, the Knights will be out to regain some of their prestige by taking the trophy away from the Loggers, who have had possession of the trophy for 12 of the possible 17 years, including the last six years in a row. Also in the possession of UPS is the Tacoma Junior Chamber of Commerce Trophy, which signifies the victor of the first game of the season between the two teams. The Loggers have had the trophy for seven of the eight years it has been in existence, and for the last four in a row.

Since their first game back in 1931, the Loggers and Knights have done battle on 40 occasions, with UPS showing a gigantic edge in the series with 28 victories, only seven losses and five ties. The Loggers have outscored PLU in the series, 525-274 with their widest margin of victory coming in the first game in 1950, 35-0.

Over the last seven games, the Knights have been unable to defeat the UPS crew, losing 21-7, 10-7, 16-7, 9-7, and 7-6. Two ties have occurred, 13-13 and 0-0. So it seems PLU has quite an obstacle to overcome if they are to win the Homecoming game.



Joe Peyton

Ricks Douglas Service
3401 Sixth Avenue
Open 24 Hours
Close to Campus
"Friendliest Brand in the West"

FIRST RATE
GENERAL DRUG AND
PRESCRIPTION SERVICE
FREDERICK'S
PHARMACY
1304 No. I St. MA. 7-6737

Select Your
Typewriter
at
H. D. Baker Co.
1702 Tacoma Ave. So.
BR. 2-3227
Rent-\$6 mo.-Buy



HERMES 3000

PEACE COMMITTEE
HILLSIDE COMMUNITY CHURCH

ANNUAL PEACE WORKSHOP

Saturday and Sunday, Oct. 10-11 — All Day
Public invited — Dinner 5-7 Saturday, \$1.50

CIVIL RIGHTS — CUBA — MISSISSIPPI
DISARMAMENT — GERMANY — VIETNAM
GRETCHEN STEEVES, CANADIAN SEES CUBA

JOHN COFFEE — JOHN GILL — ROBERT SHAW
MARK CHAMBERLAIN — JOHN CAUGHLAN
— AND YOU!

For Information — Dr. Harold Bass
Phone GR. 2-7643

Hillside Community Church

2500 South 39th Street Tacoma, Washington

BUFF & BERT'S BARBER SHOP

Shoeshine Now Available

4 Barbers SK. 9-8586
3102 Sixth Avenue

BRING US YOUR
Watches
Jewelry
Clocks
for quality repair service

Ray Sowers Jewelry

2703 No. Proctor SK 9-5681

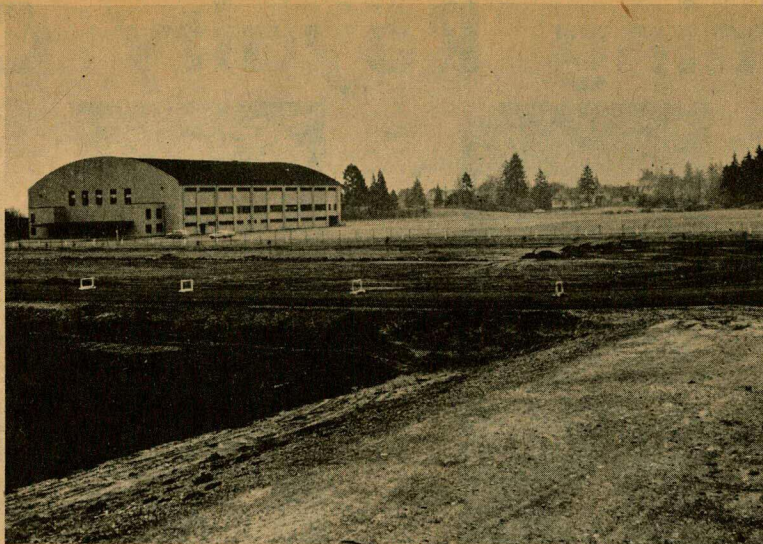
Locker Room

By Edward Adams

With the new John S. Baker stadium and the improvements on other UPS athletic facilities such as the Fieldhouse, fall sports took on the brightest outlook that the University of Puget Sound could boast of in a long, long time. But yet now at the end of the third week of football season there seems to be a growing amount of apathy among the students toward spectator participation at athletic events.

Unofficial attendance at the Western Washington game was 3,100, the attendance at last Saturday's game with Whitworth was 1,500. There were no abuse weather conditions that might have kept attendance down, so there is one explanation left; lack of interest. On confronting a member of the student body on why he did not attend the Whitworth game, his answer was simply that why should he go see a team that plays dull football when he can see a NCAA regional game on television. Plus he added that what difference does it make if there is one less spectator in the stadium. To this I answer that one less spectator means one less yell. Always remember that the football squad represents the institution for which it plays, and a yell is a sign of exclamation for that institution. A victory for the team is a victory for the school it represents, and vice-versa. The first step towards defeat takes its formation in the mind, and if you show no interest for those who play, then the first step towards defeat has been formulated no matter what the stature of the coach or team. To the complaint of dull football I must admit I agree. Lets look at the coach's point of view though so we may have a little more insight into the problem. The Loggers' offensive team has been completely stymied so far this year by opposing defenses. But a close examination at our offensive backfield will unravel part of the mystery. On the whole UPS football roster there are only two senior backfield men, Steve Maddocks and Don Stewart. When you consider that the starting backfield for UPS the last two games has been composed of two freshmen and a junior, you realize that inexperience comes into bearing. This is truly a building year for Coach Heinrick, and the quality of football he has given to us so far is a credit to his name. **But you as students have no right to desert the team in its lowest web of endeavor only to reap the harvest in its moments of glory.** To you rabid University of Washington football fans who discuss nothing but UW football even while attending one of your own UPS games. Yes to you fellow students who attend your own school's game, but have a transistor radios blasting in your ear the latest exploits of the super-human Jim Owens. To you people who place the highest pinnacle of football elsewhere than your own team, I have nothing to say except the highest oracle of disgust of which I am not allowed to write on paper.

To the Choppers and Chips I wish to express my gratitude in their spectator participation at football games. To other groups on campus who are in the position of supporting UPS athletics, I believe they should follow the initiative of the Choppers and Chips and help make this college, athletic-wise, into a university.



Chapel Officers Announced

University Chapel Choir, which presents the music heard at chapel each Thursday, has announced its new officers. They are Paul Graves, president; Judy Lindlay, Vice-president; Laeos Whitsell, secretary; Doug Smith, treasurer; Mary Cay Weikert, chaplain; Anne Horsell, historian; Cherry Craig, social chairman; Don Bussey, public relations chairman; and Bill Dabs, librarian.

REMEMBER?

Church Career List Needed

The Director of Financial Aid, Mr. Lewis Dibble, is in need of a current list of the names of those students considering a church career whether it be in education, medicine, music or any of the various ministries. Such a list is not a permanent record of binding commitments, but a worksheet both for the disbursement of certain scholarship funds and a means of getting information regarding graduate school to those interested. Write your name and campus address on a card and mark it, "Church Careers," then put it in the campus mail for Prof. Albertson SC 210.

Debates Ready

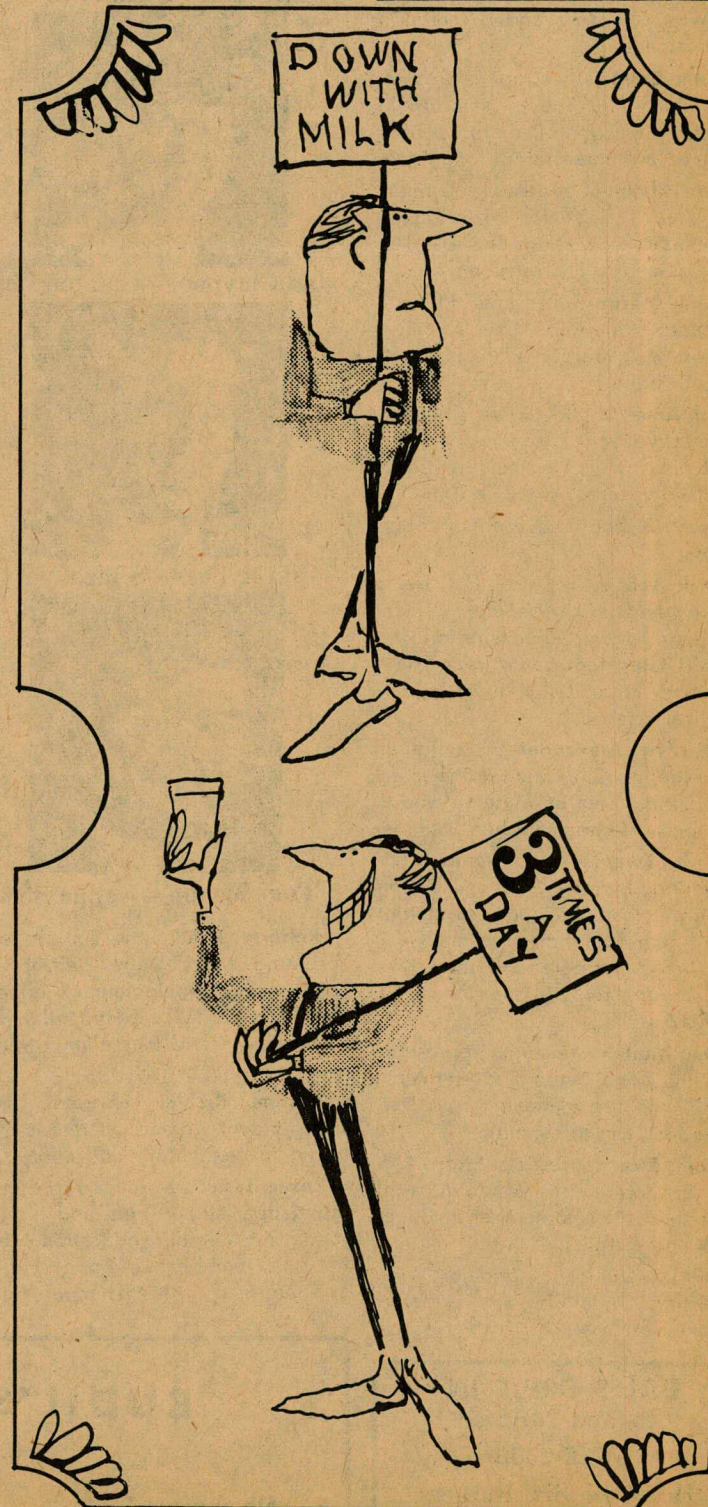
"Resolved that the Federal Government should establish a program of public work for the unemployed." To the unknowing, this is the debate topic selected for nation-wide college use this year. Debators, Al Goodwin, Tina Johnson, Jim Lovejoy, Steve Spickard, and Susan Waters are already preparing for the year's activities. The group is coached by Dr. Wilbur Baisinger and Mr. Dave Ackerman, with Steve Spickard as squad manager.

Included in this semester's schedule of events are the following: Seattle Pacific College Practice Tournament on Oct. 16-17 in Seattle; the annual Burmeister oratory preliminaries on Nov. 1-4 at UPS; the Centralia tournament on Nov. 6-7 at Centralia; and the annual Seattle Pacific College tournament on Jan. 22-23 in Seattle. Next semesters activities will take the group further away from home.

Coach Ackerman urged students interested in debate to contact him.

GUNDERSON
Original Jewelry
Antiques
Gifts
Silver
764 Broadway BR 2-4295
FREE PARKING

STEVE'S
5238 SOUTH TACOMA WAY
GREENFIELD 2-4471
TACOMA 9, WASHINGTON
FACILITIES FOR COLLEGE
PARTIES, BANQUETS
GR 2-4472 for Information



WASHINGTON DAIRY PRODUCTS COMMISSION, SEATTLE

FREE PICK-UP AND DELIVERY
AT DORMS
Competitive Prices
MODERN Cleaners
2309 SIXTH AVENUE
MA 7-1117

Farley's
Flowers
"a good place to buy"
1620 - 6th Ave.
MA. 7-7161

DIAMONDS — JEWELRY
Tacoma's Only Certified
Master Watchmaker
Accutron
Bulova
Elgin
Hamilton
SCHAEFFER'S JEWELERS
3812 No. 26th SK. 9-4242

Homecoming Royalty Crowned Tonight

Jones Is Site Of Coronation

Homecoming festivities begin in regal ceremony tonight with the crowning of Homecoming king and queen at the performance of the homecoming play, "Every Family Has One." The eight fraternities and six sororities and independent students have already chosen the eight princesses and eight princes who are to compete for the honor.

Candidates include **Joe Boyle**, Mens' Independent Representative, is a junior majoring in B.A. His activities include Knights, Campus Playcrafters and president of Alpha Kappa Psi. Joe felt there was not enough communication about Homecoming to the various living organizations, particularly the Independents.

Jim Lynass who represents Sigma Nu is also a senior. He is president of Choppers and is majoring in business.

Pam Basel is a junior representing Alpha Phi. She is majoring in special education. Pam is co-chairman of a Homecoming committee.

Jan Claypool represents Gamma Phi and is a senior majoring in elementary education. She was last year's Gamma Phi president.

Ann Martin represents Pi Beta Phi and is a senior. She is majoring in Art and is a member of Angel Flight.

Ed Amet is the Sigma Chi representative and a senior majoring in pre-dentistry. He feels that this year's Homecoming will be terrific.

Tom Bishop represents Kappa Sigma.

Dick Lea is representing Delta Colony and is a sophomore majoring in business administration.

Bill Bates represents Beta Theta Phi and is a junior majoring in political science.

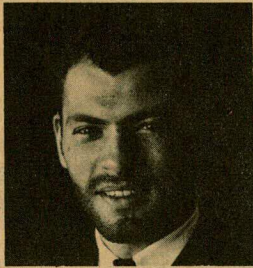
Marilyn Alexander is a junior representing Chi Omega. She is an SAE Little Sister of Minerva and a member of Angel Flight.

Judy Tweeter is a senior representing Jackson Hall at Tacoma General Hospital. Judy says that this is the first time Tacoma General has participated in Homecoming and she feels it is a good step forward.

Dan Mullen is a senior representing Phi Delta Theta and is majoring in chemistry and biology. Dan is senior class president.

Tom Rice represents Sigma Alpha Epsilon and is a senior from Longview. He is a member of Choppers and Knights.

Bill Brown is a sophomore representing Theta Chi. He is majoring in business.



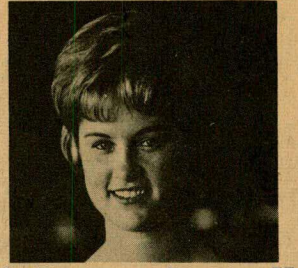
Bill Brown—Theta Chi



Leslie Tash—Theta



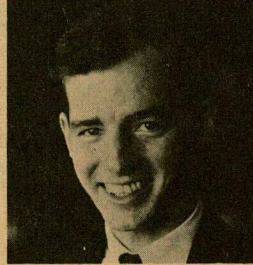
Tom Rice—SAE



Judy Tweeter—Jackson Hall



Pam Basel—Alpha Phi



Joe Boyle—Indee



Roberta Reed—Tri Delta



Dan Mullen—Phi Delta



Ed Amet—Sigma Chi



Marilyn Alexander—Chi Omega



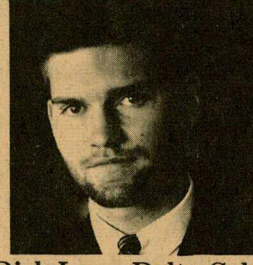
Jan Claypool—Gamma Phi



Bill Bates—Beta



Jim Lynass—Sigma Nu



Dick Lea—Delta Colony



Tom Bishop—Kappa Sig



Ann Martin—Pi Phi

Roberta Reed is a junior representing Delta Delta Delta. She is majoring in elementary education and is Vice-Commander of Angel Flight and Panhellenic treasurer.

Joanne Riehle represents the Independent women. Joanne is majoring in elementary education.

Leslie Tash is a junior representing Kappa Alpha Theta and is majoring in religious education. Leslie is a member of Angel Flight and an SAE Little Sister of Minerva.




Joanne Riehle—Indee

Fast, Modern Dorm Service

CHICKEN DEN

Delux Burgers, Fries, Chicken
Pizza, Shakes, Cold Drinks

813 DIVISION • FU 3-1471




Life's a picnic when you're refreshed.
Coca-Cola, with its cold crisp taste,
is always just right,
never too sweet . . . refreshes best.

things go better with **Coke**



Bottled under the authority of The Coca-Cola Company by Pacific Coca-Cola Bottling Company, Tacoma, Wash.

DALES DRIVE IN
6th and Mildred
SK 2-2556
"Home of Six Burgers
for a Dollar"

BUDIL'S FLOWERS
ALWAYS FRESH — ALWAYS ARTISTIC
6th Ave. at Oakes FU 3-4739