

Oct 27th, 1:15 PM - 1:30 PM

Challenge 3: Allocating Resources/Redistributing Functions Across Community

Samantha Danchuk

Environmental Planning and Community Resilience Division, Broward County, FL

Follow this and additional works at: <https://scholarworks.uno.edu/resilience>

Danchuk, Samantha, "Challenge 3: Allocating Resources/Redistributing Functions Across Community" (2015). *Coastal Resilience Workshop*. 5.
<https://scholarworks.uno.edu/resilience/2015/day2/5>

This Event is brought to you for free and open access by ScholarWorks@UNO. It has been accepted for inclusion in Coastal Resilience Workshop by an authorized administrator of ScholarWorks@UNO. For more information, please contact scholarworks@uno.edu.

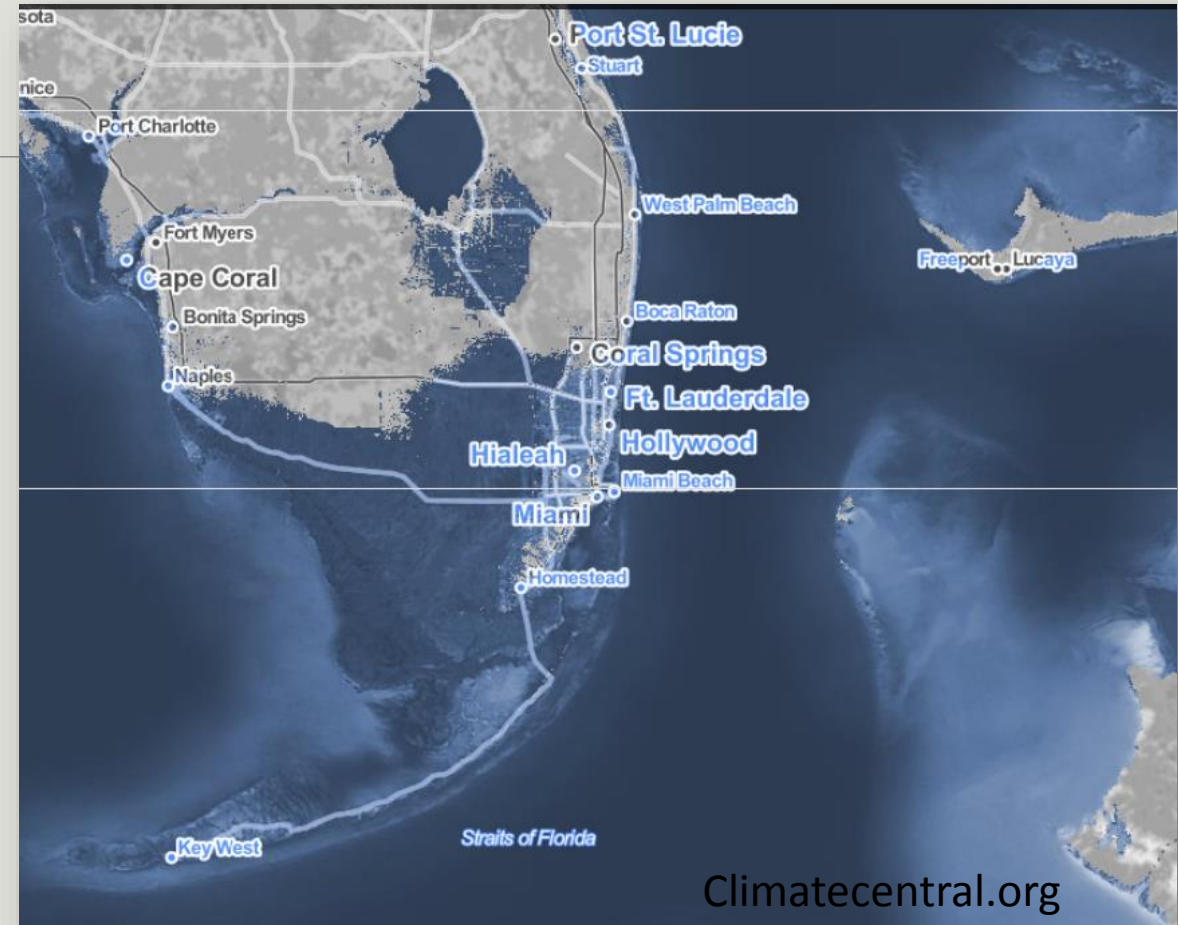
Challenge 3: Community Resources & Functions

REDISTRIBUTION AND REALLOCATION

Big Picture

How and when, do we redistribute functions across the community to improve resilience?

Is resiliency improved by centralization of resources in resilient areas or redundancy in each municipality?



Critical Infrastructure

Energy

- Vulnerability
- Scale- solar

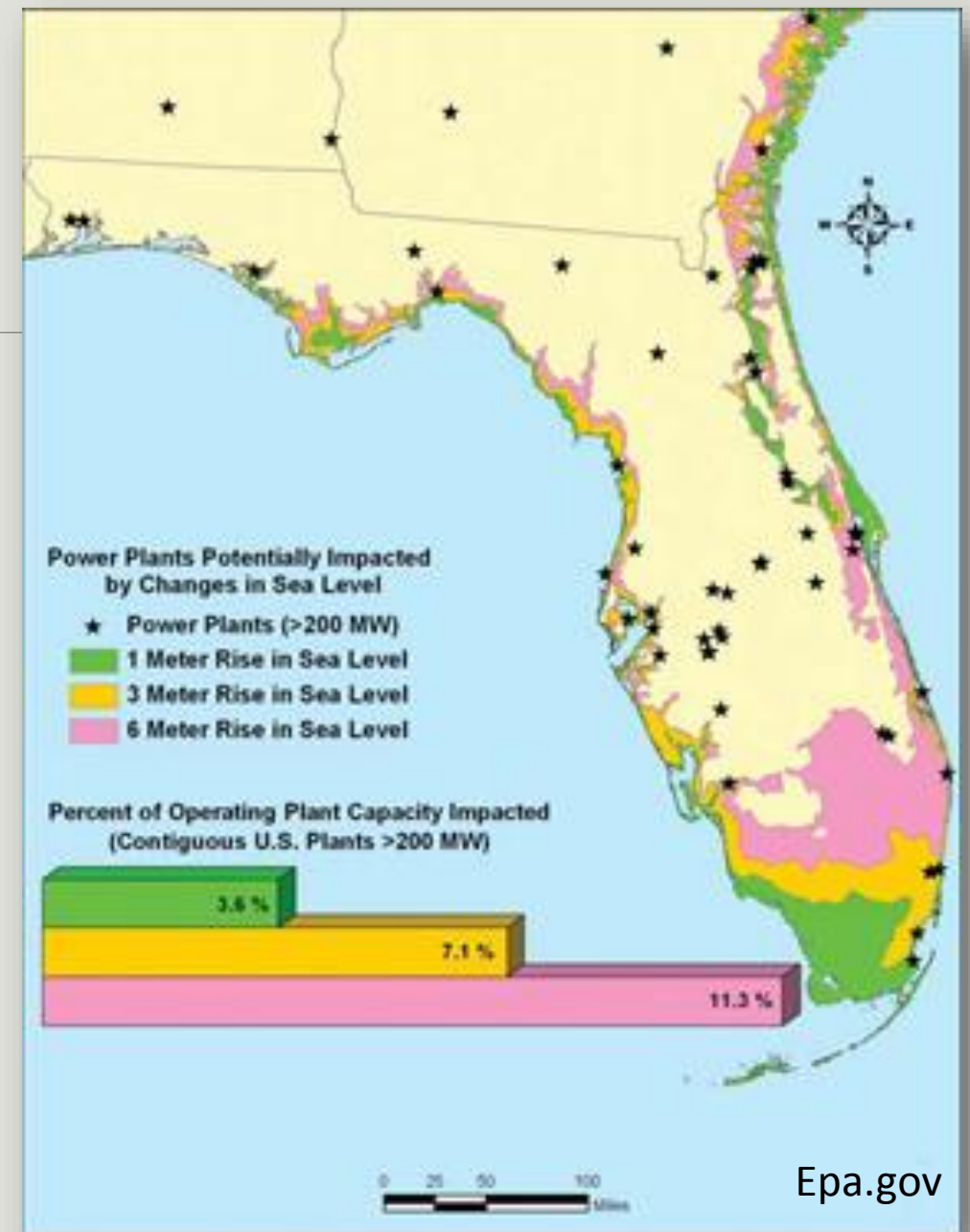
Utilities

- Vulnerability
- Demand/ efficiency

Shelters

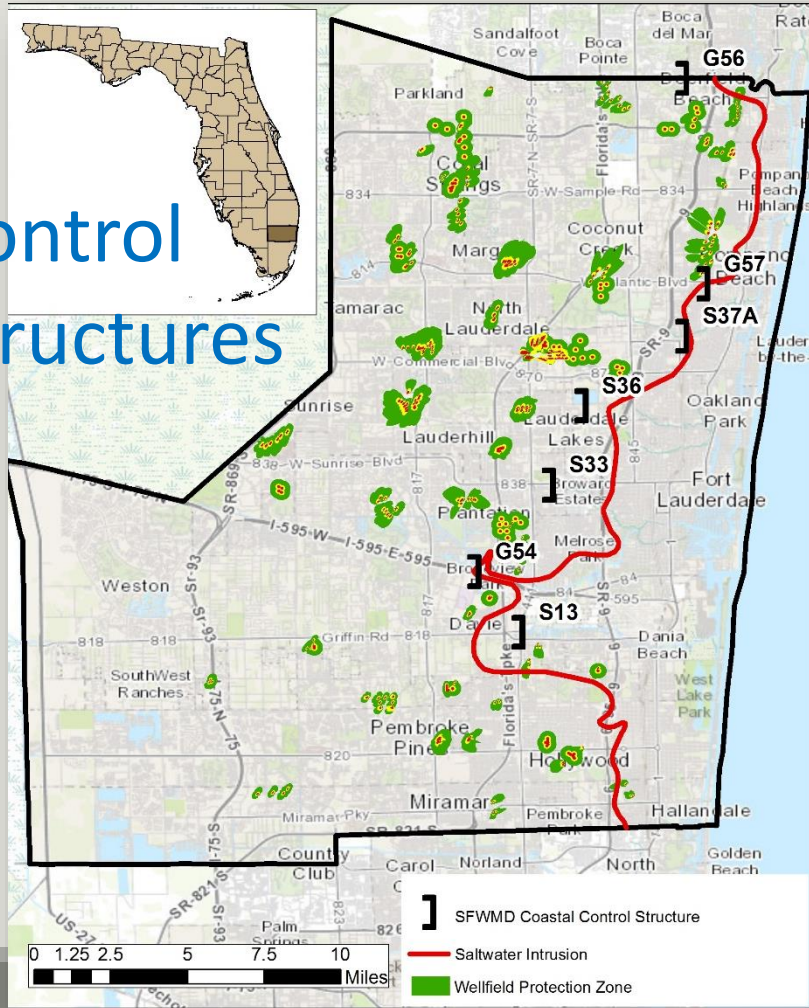
Transportation Network

Food sources/ commerce



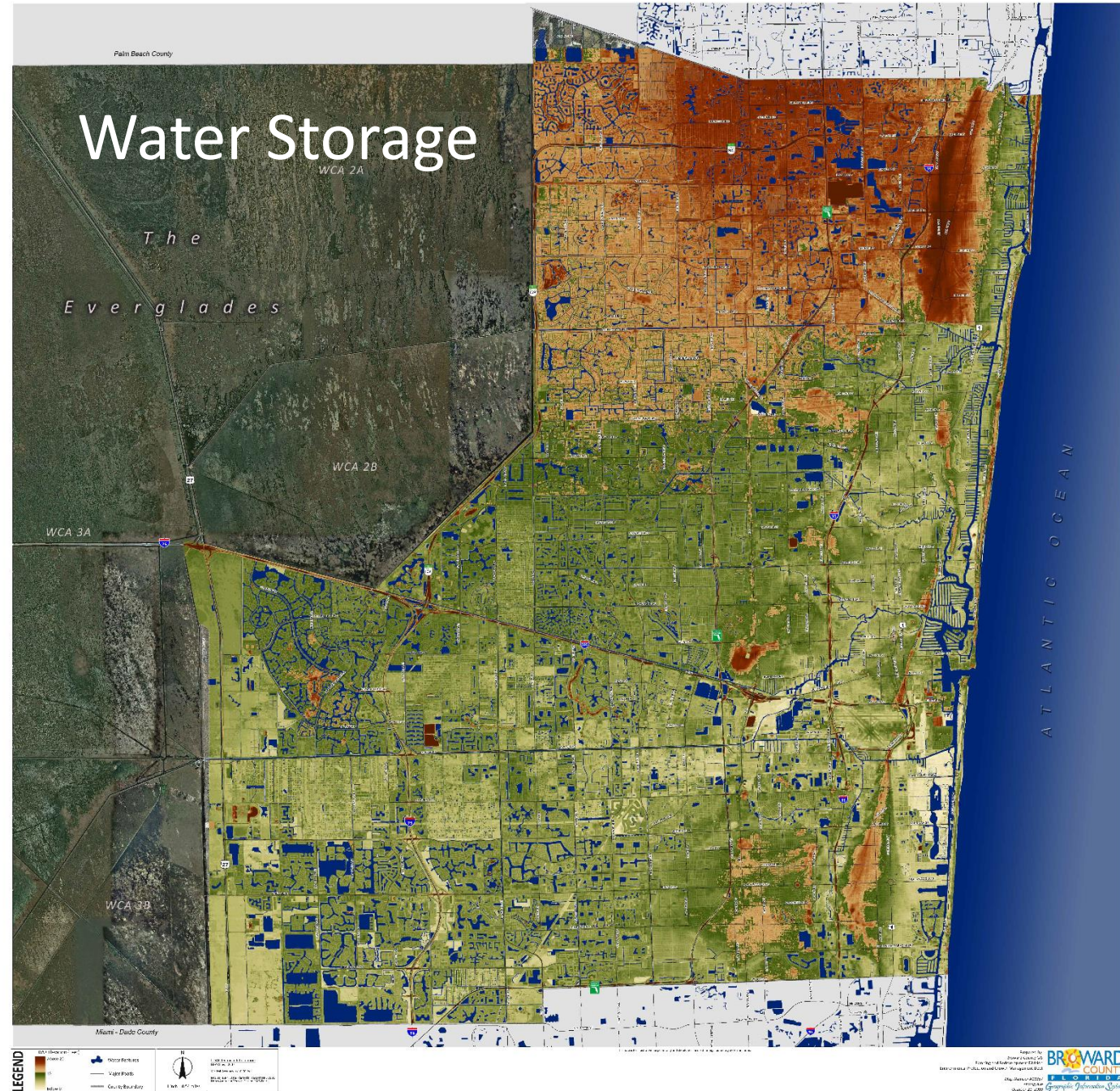
Stormwater Management

Control Structures



BARE-EARTH ELEVATION OF BROWARD COUNTY, FLORIDA

Water Storage



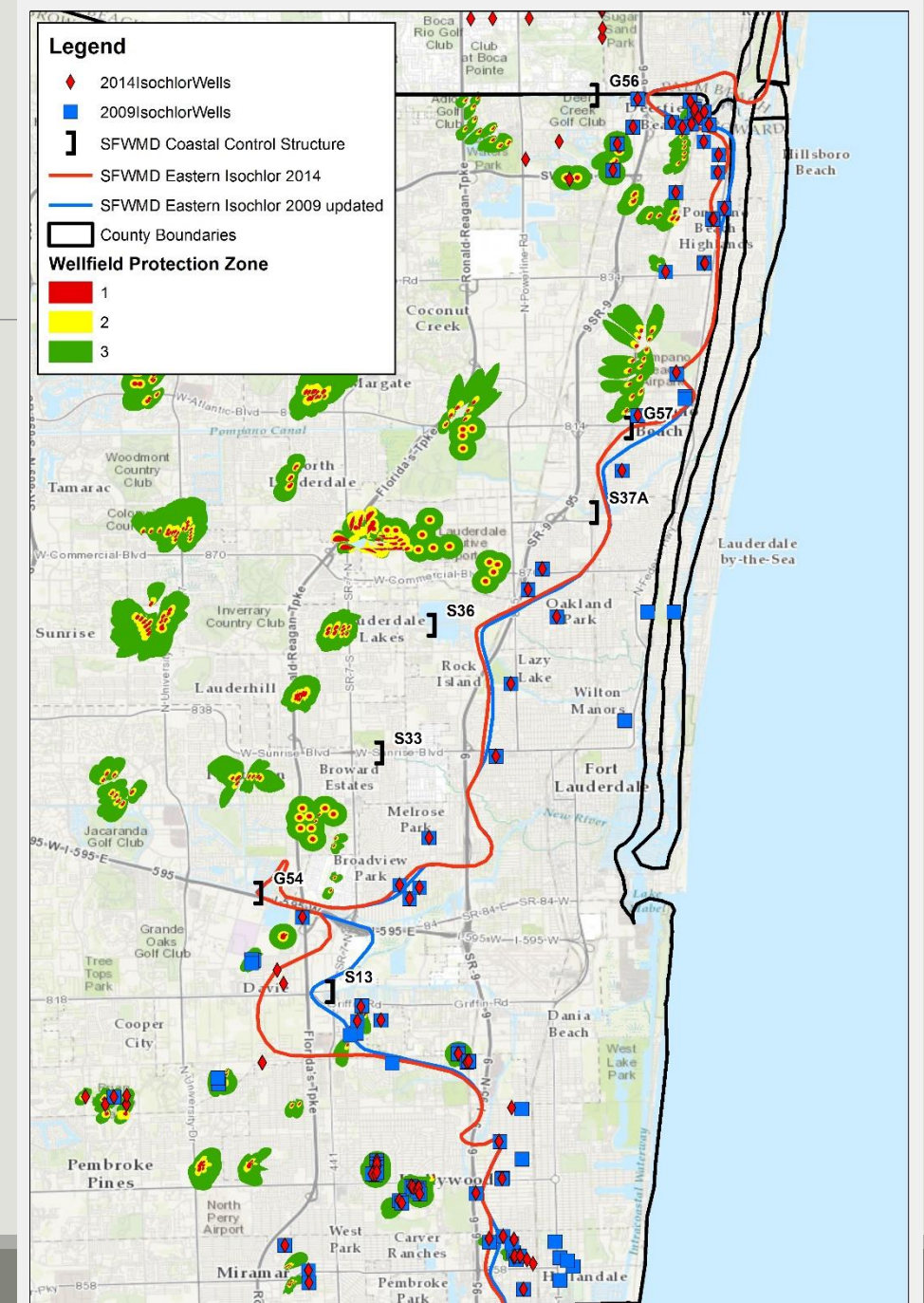
Water Supply

Saltwater Intrusion

Relocation

Regionalization

Interconnection



Development

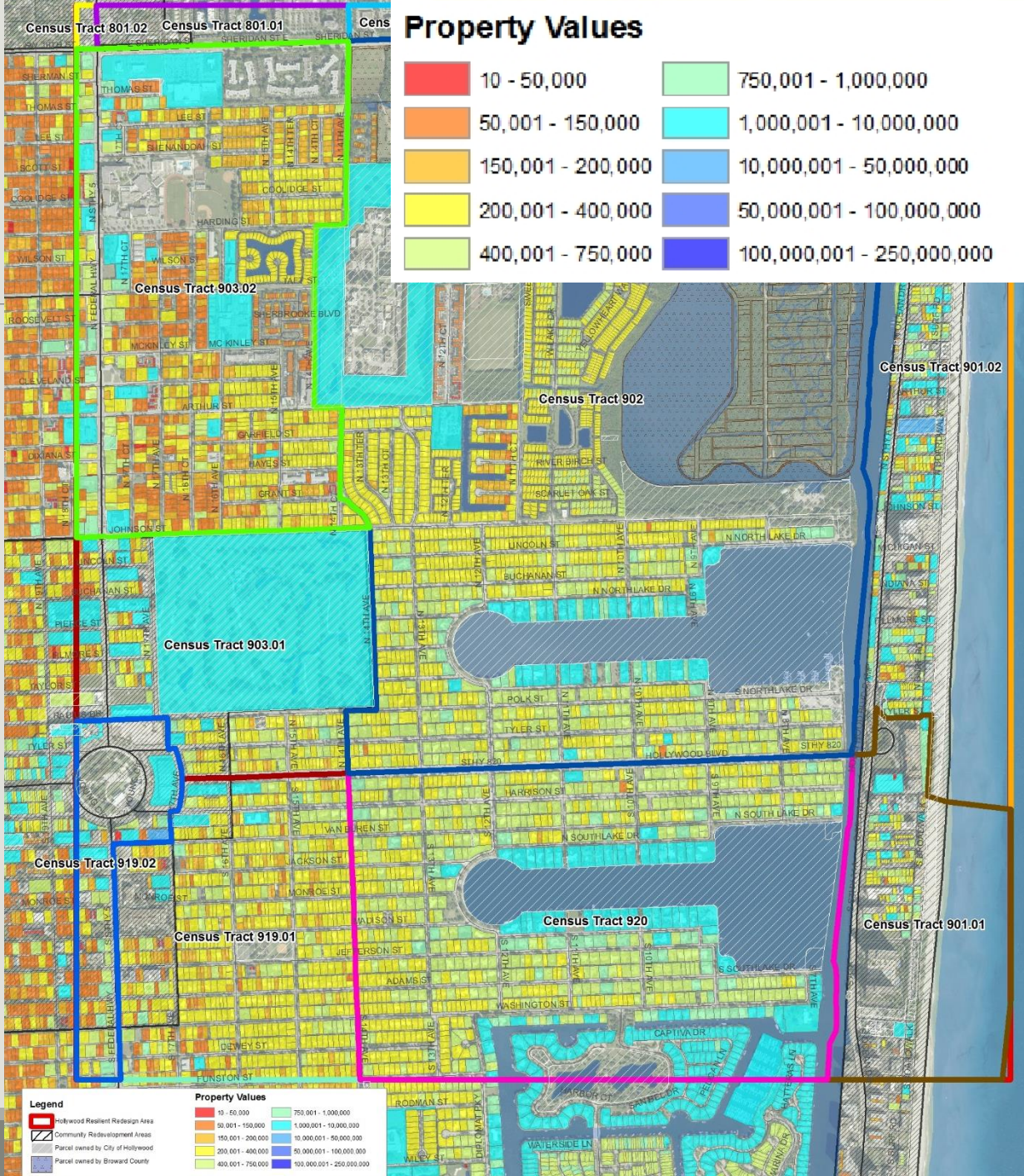
Flood zones

High hazard areas

Adaptation costs

Level of service

Gentrification/ affordability



Tax Expenditures

Total County Property Value (Assessed): \$224B

Property Taxes \$862M (20% of budget)

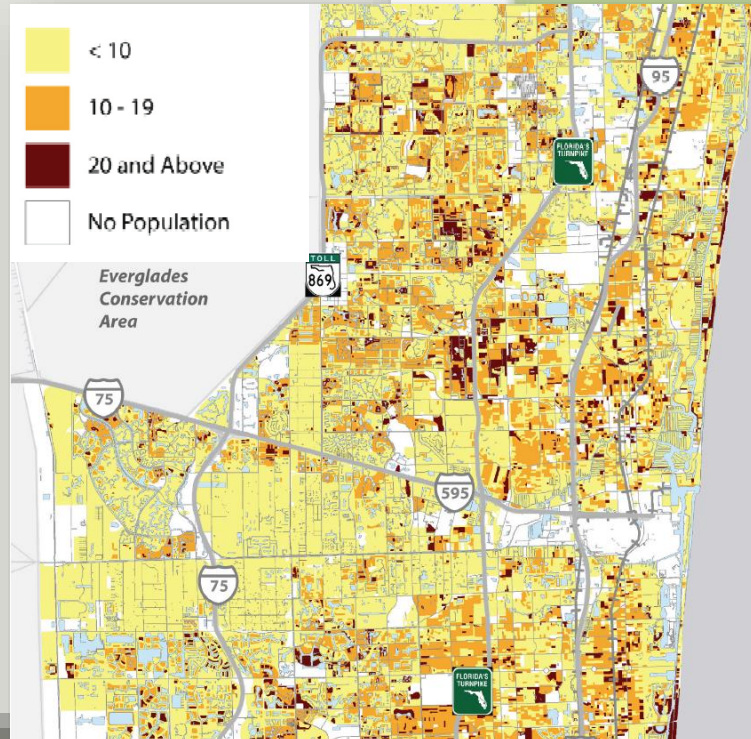
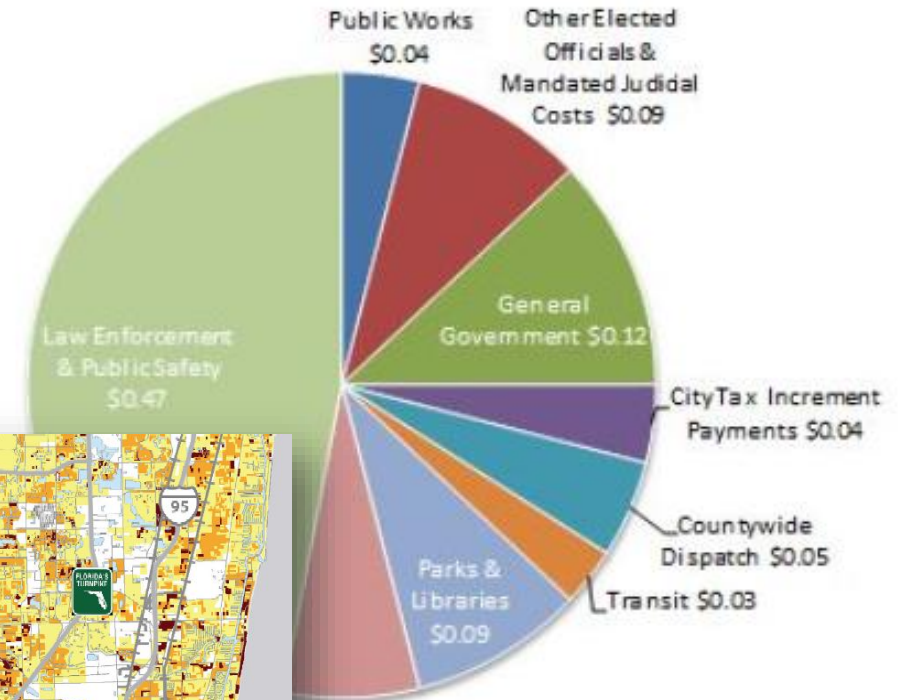
Operating Budget: \$2.6B

Capital Budget & Debt Service: \$1.5B

Public Works: \$239.5M

Equitable distribution vs critical needs?

Services Provided with Property Tax Dollars (excluding Capital Projects and Debt)



Challenge 3: Resources & Functions

How to analyze and justify redistribution?

How to use models in support of cost-benefit analysis?

What can be multi-purposed to enhance resiliency?

How can functions within a community be preserved?