

University of New Orleans

ScholarWorks@UNO

DRU Workshop 2013 Presentations – Disaster
Resistant University Workshop: Linking
Mitigation and Resilience

Conferences and Workshops

3-2013

Continuity Planning at Institutions of Higher Education

Matthew Hart
Tufts University

Follow this and additional works at: <https://scholarworks.uno.edu/dru2013>

Recommended Citation

Hart, Matthew, "Continuity Planning at Institutions of Higher Education" (2013). *DRU Workshop 2013 Presentations – Disaster Resistant University Workshop: Linking Mitigation and Resilience*. Paper 44. <https://scholarworks.uno.edu/dru2013/44>

This Presentation is brought to you for free and open access by the Conferences and Workshops at ScholarWorks@UNO. It has been accepted for inclusion in DRU Workshop 2013 Presentations – Disaster Resistant University Workshop: Linking Mitigation and Resilience by an authorized administrator of ScholarWorks@UNO. For more information, please contact scholarworks@uno.edu.

Continuity Planning at Institutions of Higher Education

*Disaster Resistant University Workshop
University of New Orleans
March 22, 2013*



Tufts
UNIVERSITY

COMMENCEMENT



COMMENCEMENT



TUFTS UNIVERSITY

3 problems

resources

champion

buy-in

important

accessible

continuity planning
helps you to do **tomorrow**
what you were doing **yesterday**
no matter what happens **today**



prepare

carry on

resume



Department Identification
Critical Functions
Information Technology
Instruction
Key Resources



pros

cons

Tufts Ready continuity

a continuity planning tool for Tufts University - to sustain our

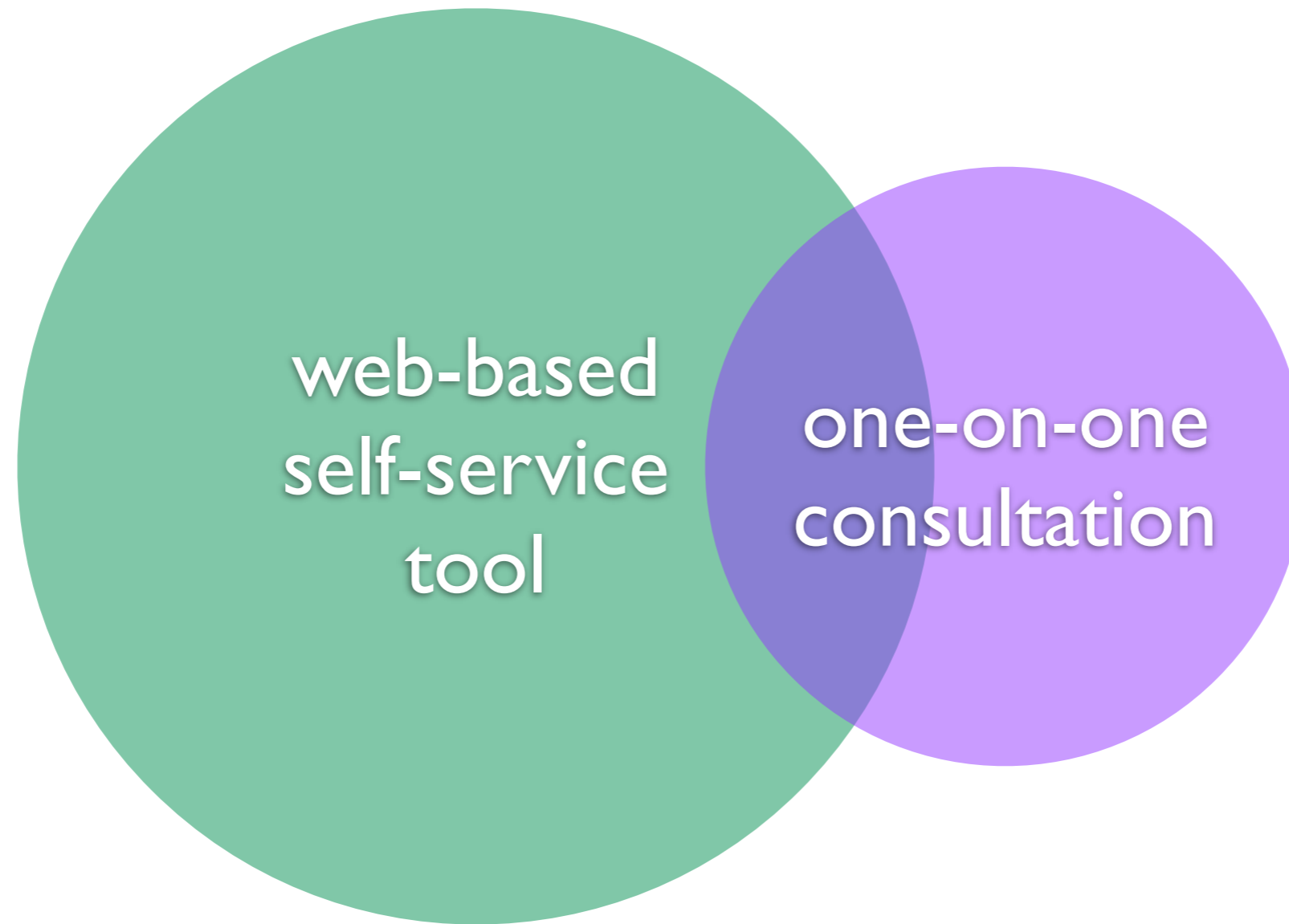
TEACHING

RESEARCH


PATIENT CARE

using **kuali**
ready®

Tufts Ready continuity



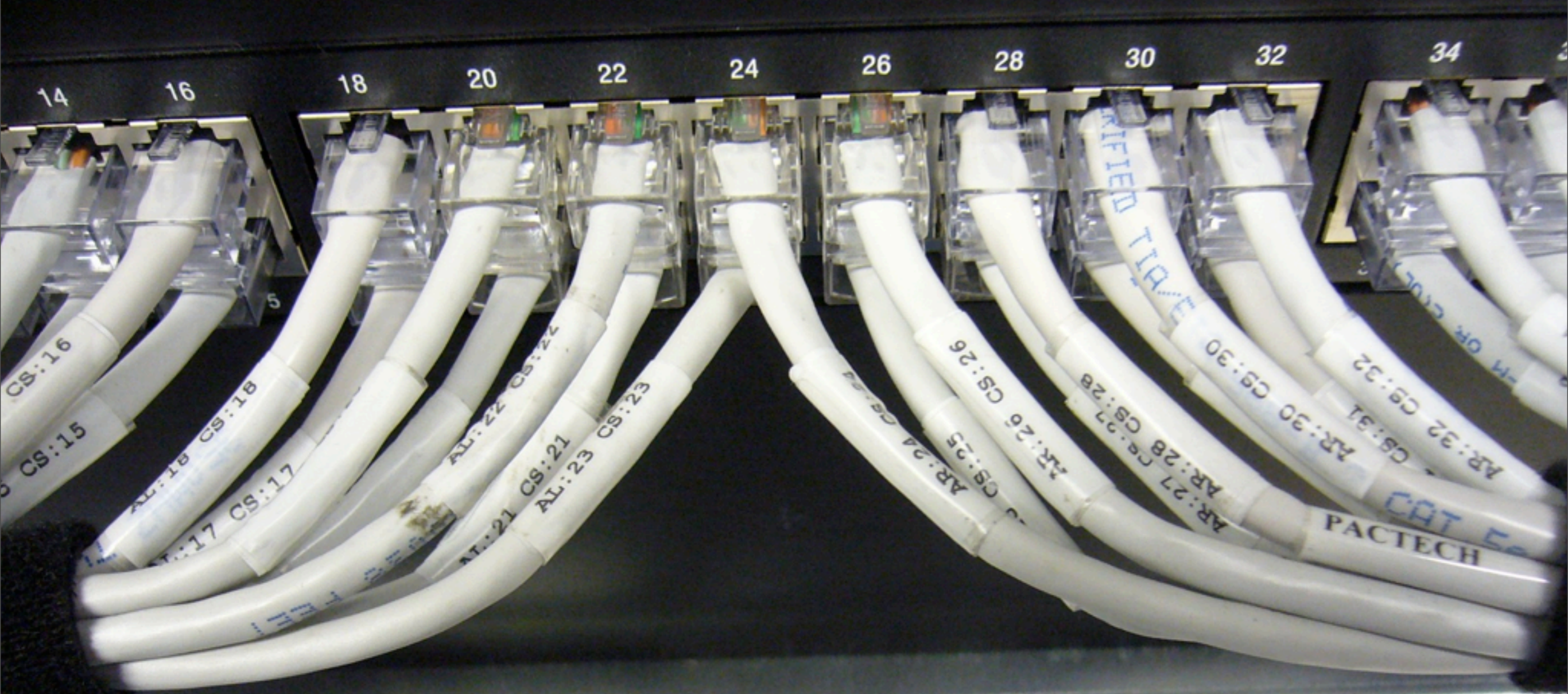
Tufts Ready continuity



one-on-one
consultation









important

**IN CASE OF
EMERGENCY**

Tufts Ready continuity

a continuity planning tool for Tufts University - to sustain our

TEACHING

RESEARCH

PATIENT CARE

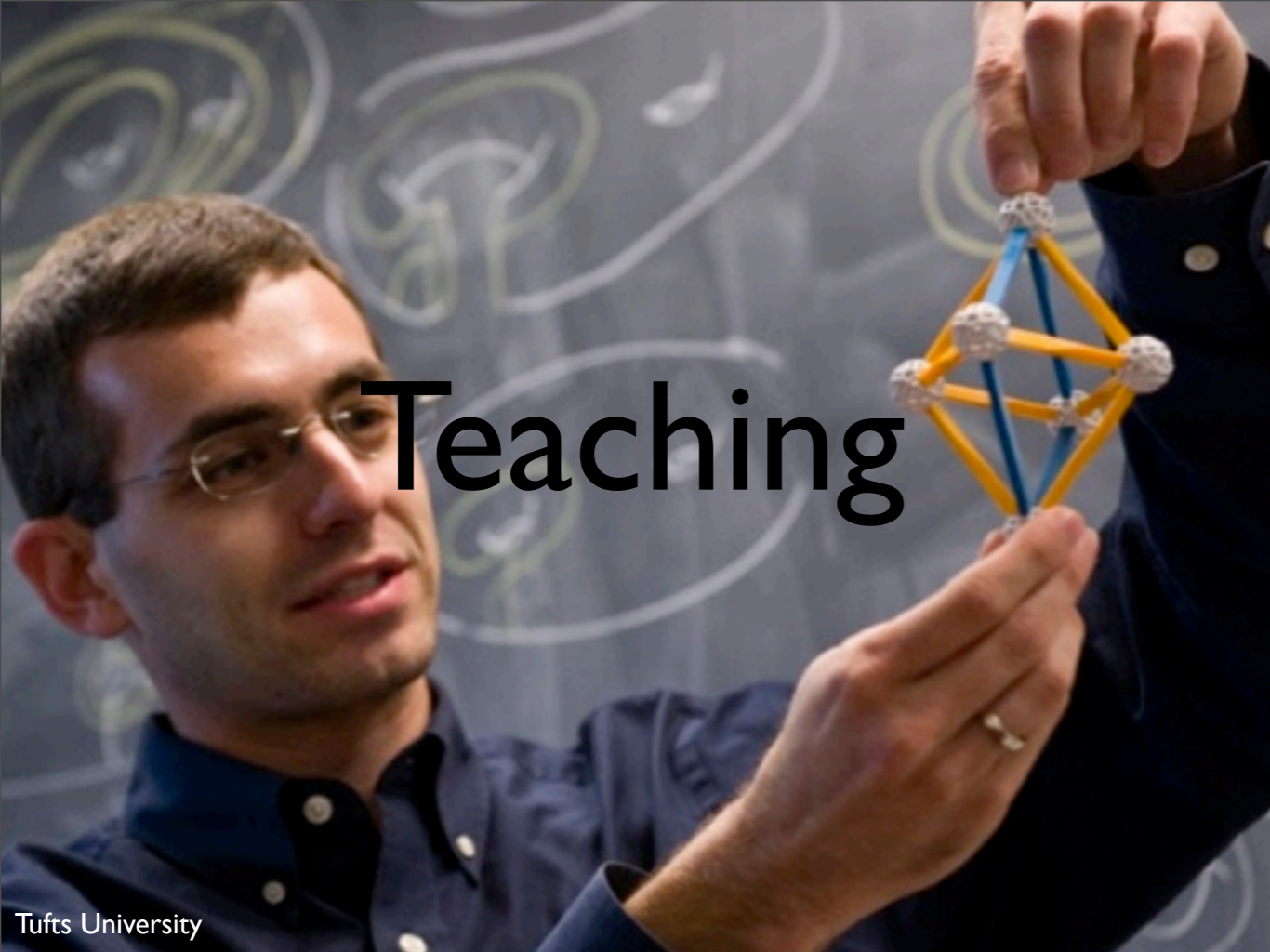
using **Quali**
ready



U.S. Army Garrison Yongsan Public Affairs



Alonso Nichols/Tufts University



Teaching

Tufts University



Research

Alonso Nichols/Tufts University



Patient Care

Alonso Nichols/Tufts University



personnel

space

equipment

IT



Project Initiation

Obtain management commitment

Identify unit planning group

Determine plan scope and objective

Business Impact Analysis

Identification and assessment of business objectives

Identification of interdependencies

Assignment of recovery time objectives

Strategy Selection

Identify and document resource requirements

Identify and document assembly and EOC locations

Identify available computer recovery resources

Select recovery locations

Plan Development

Prepare plan framework

Identify recovery teams

Prepare recovery procedures

Document/develop manual processing strategies

Document primary site operations resumption procedures

Assemble COOP/BCP and obtain management authorization

Testing and Maintenance

Develop annual test schedules

Devise plan tests

Conduct and evaluate tests

Train plan users

Prepare COOP/BCP maintenance procedures

Revise and distribute COOP/BCP

**continuity planning
used to be difficult**



Choose Easy.



UNIVERSITY OF
TORONTO

PENNSTATE



BROWN



UNIVERSITY OF
Miami

1000

Cal



THE UNIVERSITY
OF IOWA

W



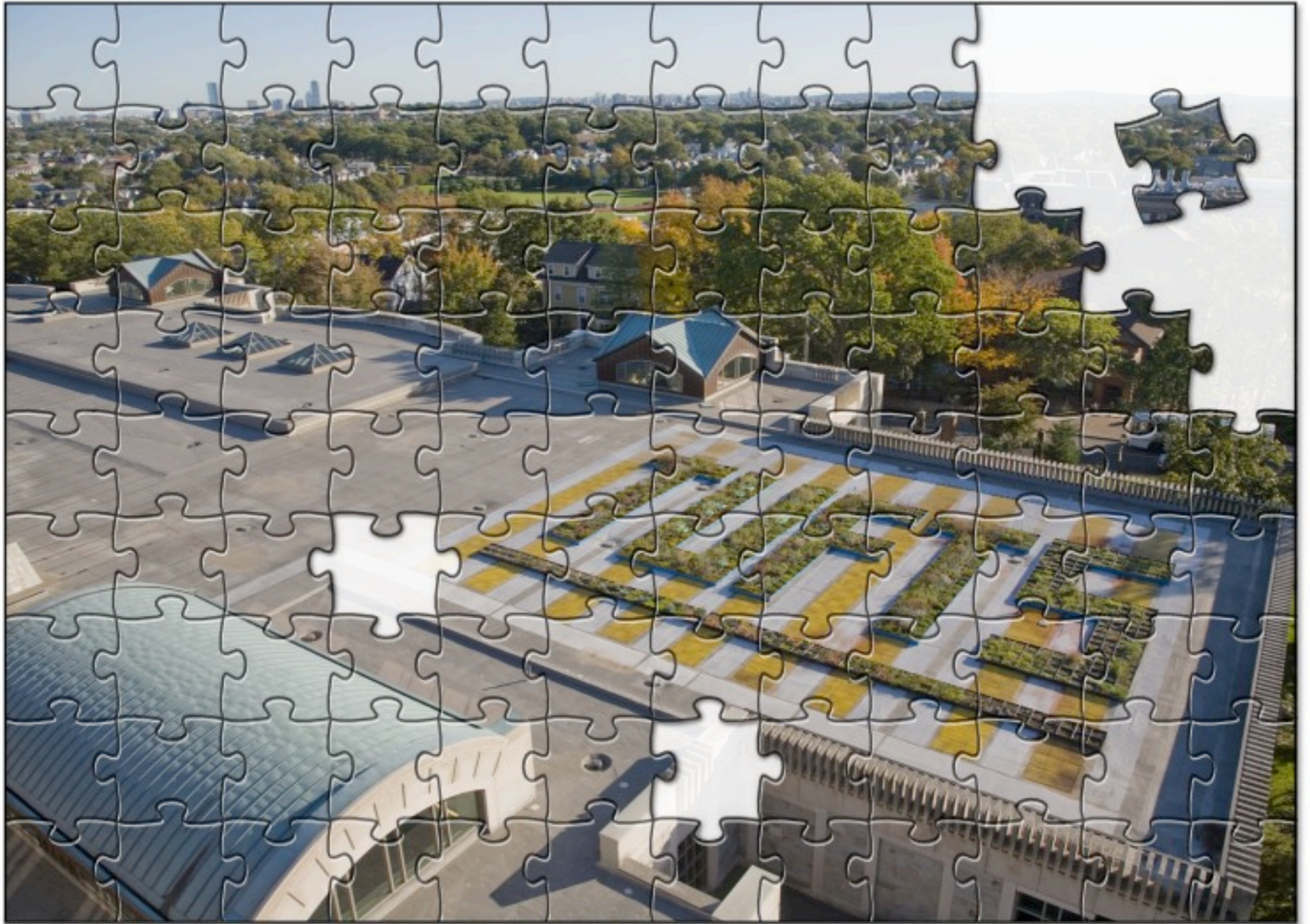
USC

UNIVERSITY *of*
WASHINGTON

collect information

answer questions

identify actions



zero training needed

by higher ed - for higher ed

expertise is built-in



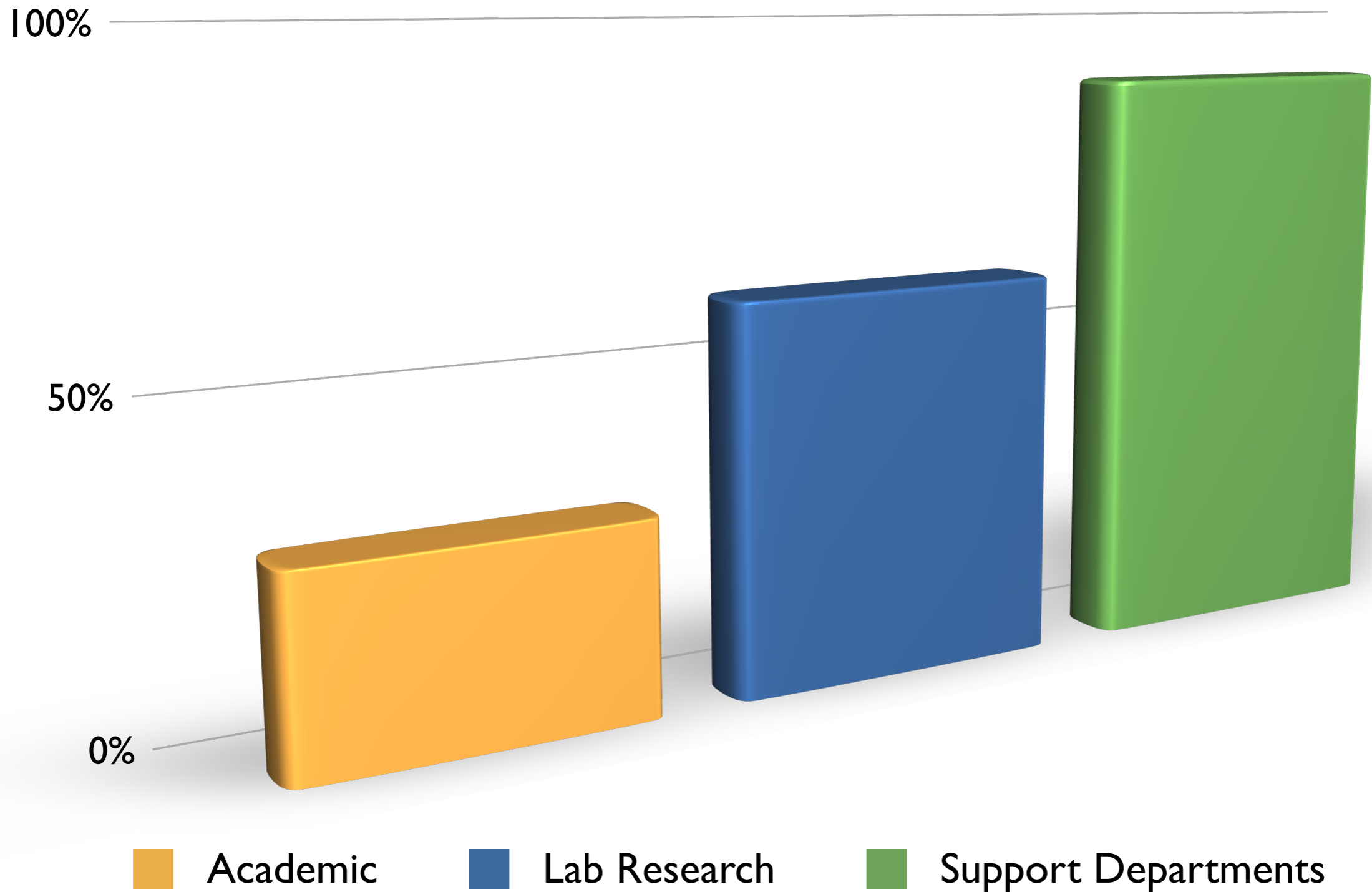
accessible



Tufts'
UNIVERSITY

planning effort

Project Goals



**consultation
approach
support
review
exercises**

MARCH

22

2013



Department of Public and Environmental Safety

Matthew R. Hart
Continuity Planning Specialist

419 Boston Avenue
Medford, MA 02155
TEL: 617.627.6213
matthew.hart@tufts.edu
emergency.tufts.edu



KEEP
CALM
AND
CARRY
ON

<http://emergency.tufts.edu/continuity/>