

University of New Orleans

ScholarWorks@UNO

ExecNola 2011 Presentations - Disaster
Resilient Communities: An Executive Program
in Resilience and Risk Management

Conferences and Workshops

4-2011

Opening Remarks

Monica Farris

University of New Orleans, mateets@uno.edu

Follow this and additional works at: <https://scholarworks.uno.edu/en2011>

Recommended Citation

Farris, Monica, "Opening Remarks" (2011). *ExecNola 2011 Presentations - Disaster Resilient Communities: An Executive Program in Resilience and Risk Management*. Paper 5.
<https://scholarworks.uno.edu/en2011/5>

This Presentation is brought to you for free and open access by the Conferences and Workshops at ScholarWorks@UNO. It has been accepted for inclusion in ExecNola 2011 Presentations - Disaster Resilient Communities: An Executive Program in Resilience and Risk Management by an authorized administrator of ScholarWorks@UNO. For more information, please contact scholarworks@uno.edu.

Building Disaster Resilient Communities

Lindy C. Boggs International Conference
Center at The University of New Orleans
Friday, April 8, 2011

Repetitive Floodless Reduction Project for the States of LA and TX (FEMA)

www.floodhelp.uno.edu

Welcome...

- Repetitive Loss Area Analyses and Other Reports
- Protecting Yourself
- Protecting Your Pets
- Protecting Your Home
- Flood Recovery
- Flood Insurance
- Drainage Problems
- Funding
- Floodplain Management
- Community Contacts
- Secure Portal Access
- Glossary of Terms
- FEMA Publications
- Related Links



solument
Contact Site Administrator

Welcome...

Welcome to the Repetitive Floodloss

Information Site!

This website is brought to you by the University of New Orleans with funding support from FEMA.

Headlines and Information

- [Repetitive Loss Area Analyses and Other Reports](#)
- [Current Disaster Declarations](#)
- [In the News](#)
- [Hurricanes Katrina and Rita](#)

What to do when...

- [You want to be prepared for a flood event](#)
- [A hurricane or tropical storm warning has been issued](#)
- [Flooding has started](#)
- [Your home has just been flooded](#)

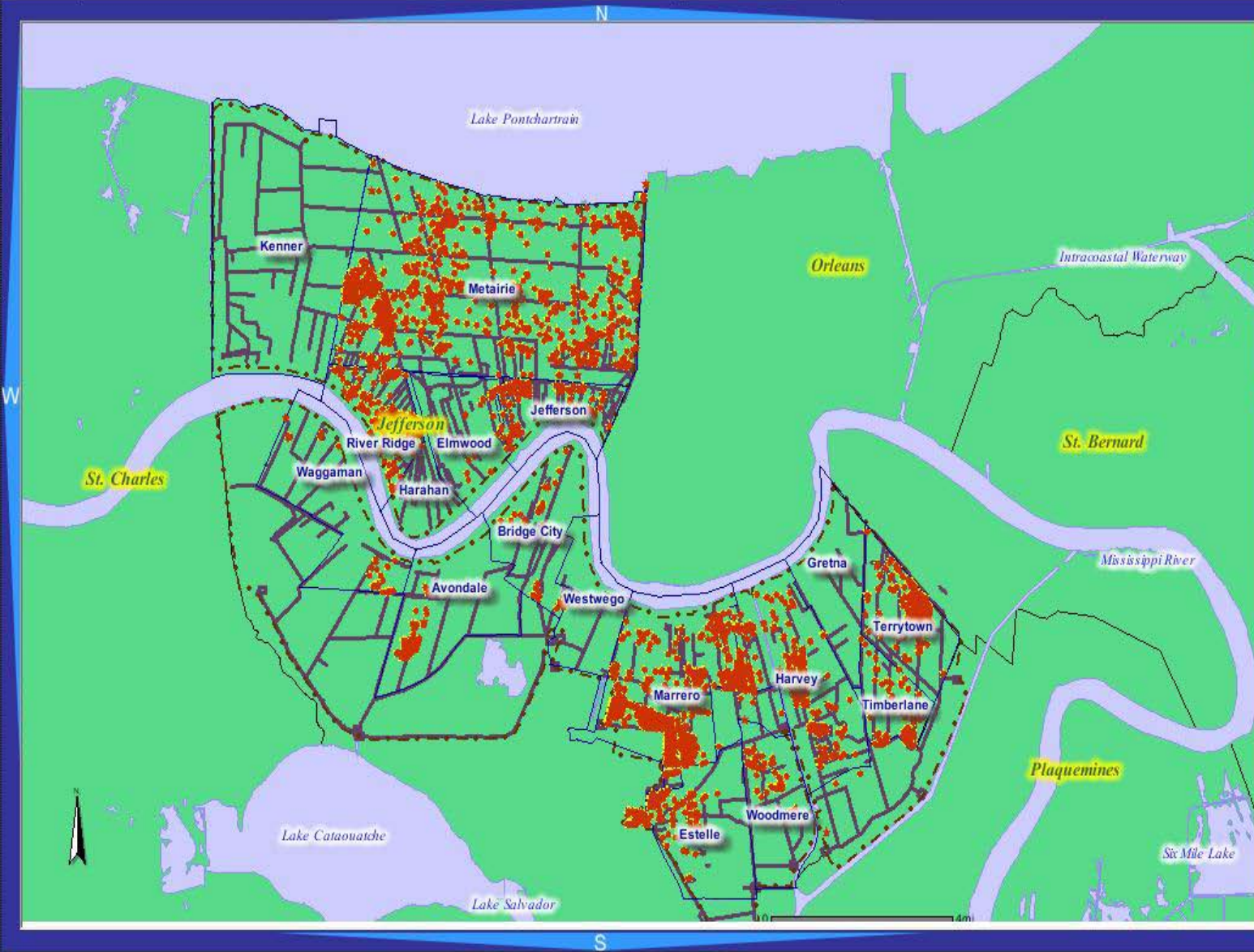
If you are a local mitigation management official please [contact CHART](#) for more information on the repetitive loss portal: 504-280-5760



These homes will be protected from the base flood



This homeowner built a small floodwall surrounding the structure



Layers

Refresh Map

Visible Active

- RepLoss Properties
- RL Props By Severity
- Council District
- Communities
- NFIP Policy Holders
- Jeff Parish
- Substantial Damage
- Gretna Substantial Damage
- SELA Points
- SELA Reaches
- Levees
- Drainage Subbasins
- Drainage Canals
- Drainage Pumpstations
- Major Water Bodies
- Drainage Basins
- Population Density
- Pcnt Minority
- Avg Value - 2000 Census
- SFHA
- ABFE's
- Geology

Zoom In



UNIVERSITY OF NEW ORLEANS
EXECUTIVE PROGRAM

REPETITIVE LOSS AREA ANALYSIS #5

Bayou Liberty Study Area • St. Tammany Parish, Louisiana



December 1, 2006

University of New Orleans

Center for Hazards Assessment, Response and Technology



<http://floodhelp.uno.edu>

Supported by FEMA Region VI

Repetitive Loss Area Analysis #11

City of New Orleans, Louisiana
Pines Village Area |



August 17, 2010

University of New Orleans

Center for Hazards Assessment, Response and Technology



www.floodhelp.uno.edu

SUPPORTED BY FEMA

Community-Based Planning for Elderly Evacuation (Grantmakers in Aging)



Community Elevation Conversations (PERI)



View Neighborhood Map | UNO-CHART Home | Floodhelp Portal | Flood Insurance Information | LouisianaFloods.org | Contact | Terrance Osborne Gallery



About This Site

Imagining what an attractive elevated home can look like is a challenge to many homeowners contemplating or actually beginning the house elevation process. The hazard center at the University of New Orleans, UNO-CHART, has developed a neighborhood-based map to offer New Orleans residents, community leaders, and others an opportunity to visualize home elevation options. Homeowners can see how others have elevated, including homeowners in their own neighborhood.

Some homeowners may not be sure they want to elevate their homes at all, others may have made the decision to elevate but do not know exactly what they envision for their home's appearance once elevated. CHART hopes this electronic array of elevated homes will help with the decision making process.



The map shows a variety of elevated homes raised to all heights of elevation, whether it be the height for Flood Insurance/building ordinance requirements or much higher. It shows many different kinds of first floor treatments, that is, ways of covering or utilizing the space between the house and the ground. How the space is handled often depends on the height of the elevation. Lattice work and masonry are common for more moderate elevations. Shutters and recessed shaded areas appear in some of the higher houses.



A Successful Elevation Project

The map shows houses representing owners of different income levels and houses in different states of repair. It features houses that were elevated long before Hurricane Katrina and houses that have been elevated since then. Some photos feature attractive landscaping, others point to the potential for landscaping. Architectural features, such as staircases, banisters, porches, and detailed exterior design work are highlighted wherever they occur. CHART hopes that through discussion and illustration of home elevation, communities will view mitigation and thus, enhanced safety, as attractive and desirable. The map of elevated homes has been created by UNO-CHART's Community Elevation Conversation project team with GIS mapping assistance by Michael Wesley. It is sponsored by the Public Entity Risk Institute (PERI) of Fairfax, Virginia.



Elevation Work Nearing Completion

The Center for Hazards Assessment, Response and Technology (UNO-CHART) is an applied center focused on community collaboration to encourage and achieve reduced risk from natural hazards.

Analysis of Stafford Act Performance for Catastrophes (Ford Foundation)

Achieving Successful Long-Term Recovery and Safety from a Catastrophe: The Federal Role



Funded by the



Ford Foundation

University of New Orleans Center for Hazards Assessment, Response and Technology

Shirley Laska, Ph.D.
Pamela Jenkins, Ph.D.
Robert Montjoy, Ph.D.
Monica Teets Farris, Ph.D.
Earthea Nance, PhD, PE, CFM
Michelle Gremillion, M.A.
Joel Devalcourt
K.C. King

North Carolina State University

Branda Nowell, Ph.D
Thomas Birkland, Ph. D

June 2010

WWW.CHART.UNO.EDU

Community Education & Outreach (FEMA/ GOHSEP)

1. Community Continuity Planning and Mitigation for Community Organizations: Businesses, Government Agencies, Faith Organizations and Non-Profit Groups
2. Campus-wide Hazards Resiliency Curriculum & Development of Hazard Mitigation Planning Curriculum
3. Risk Literacy
4. Disaster Resilient University State-Wide Conference & On-going Collaboration
5. Community Executives Program in Risk Management

EXECUTIVE PROGRAM IN
RESILIENCE AND RISK MANAGEMENT



UNO-CHART EXECUTIVE PROGRAM

www.chart.uno.edu



EDUCATE
to
MITIGATE™



GET A
GAMEPLAN