

The Anterior-Posterior Axis Emerges Respecting the Morphology of the Mouse Embryo that Changes and Aligns with the Uterus before Gastrulation

Daniel Mesnard, Mario Filipe, José A. Belo, and Magdalena Zernicka-Goetz

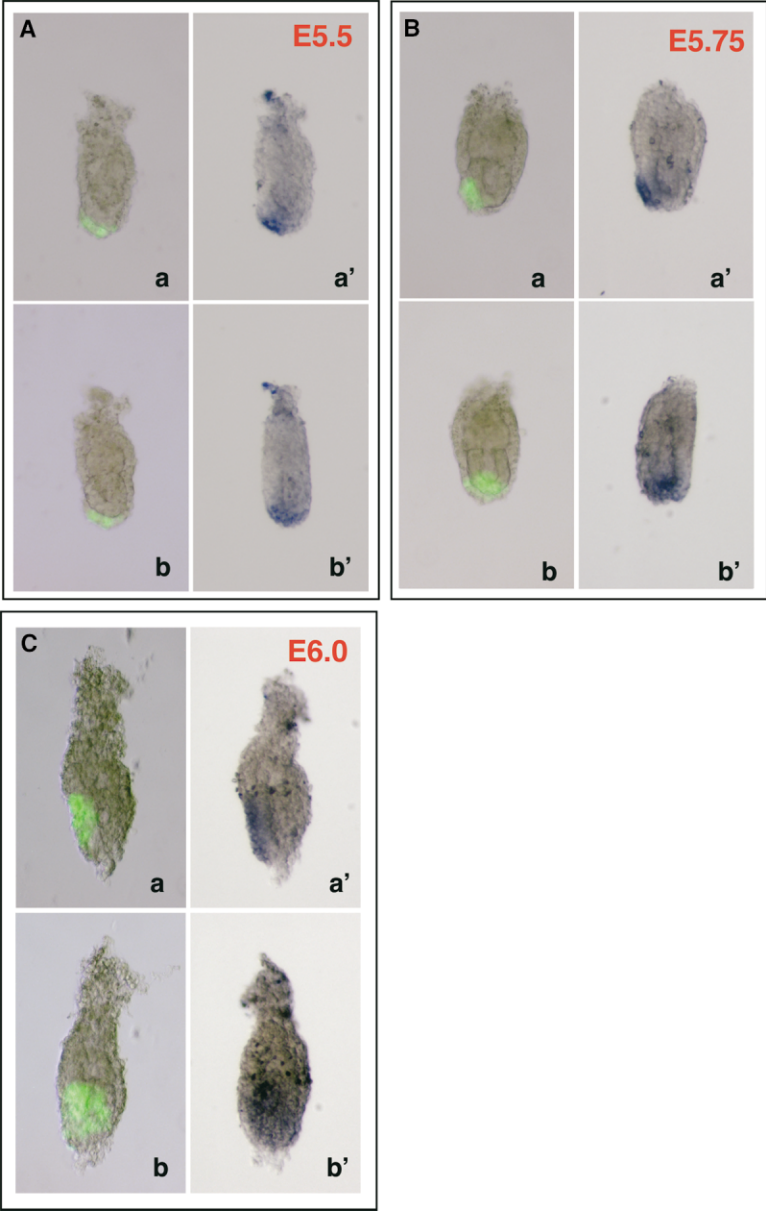


Figure S1. Colocalization of GFP and mRNA Expression from the *Cer1* promoter
Colocalization of GFP fluorescence (left) and in situ hybridization (right) as a marker for *Cer1* expression in the same *Cer1*-GFP embryo at E5.5 (A), E5.75 (B), and E6.0 (C) at two different orientations (a and b). Note that the *Cer1* expression at E6.0 is present on the short embryonic axis.