

Measured distances for morphometric analysis

PL =
prodorsum length

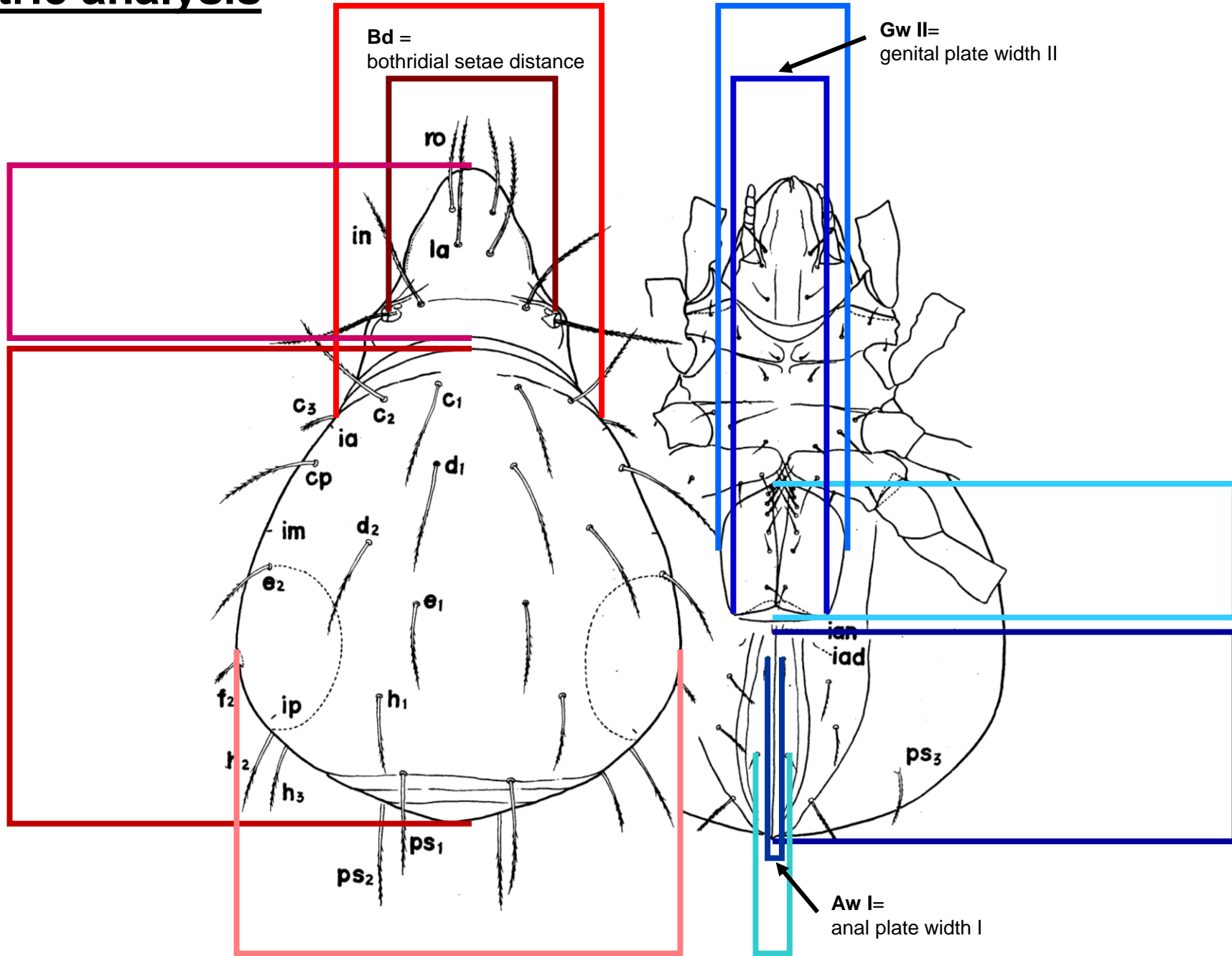
NL =
notogaster length

Nw II =
notogaster width II

Bd =
bothridial setae distance

Gw I =
genital plate width I

Gw II =
genital plate width II



GL =
genital plate length

AL =
anal plate length

Nw I =
notogaster width I

Aw II =
anal plate width II

Aw I =
anal plate width I

Modified after:

Aoki J. (1965). Oribatiden (Acarina) Thailand I. Nature and Life in Southeast Asia, 4: 129-193.