

SUPPLEMENTARY DATA

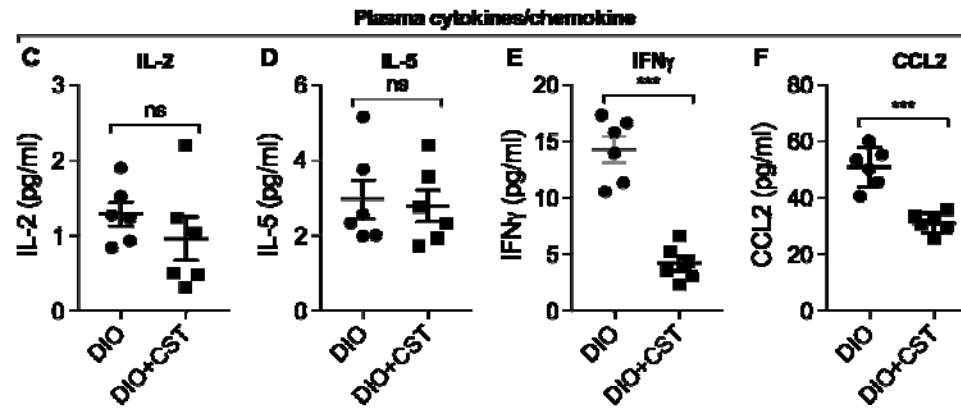
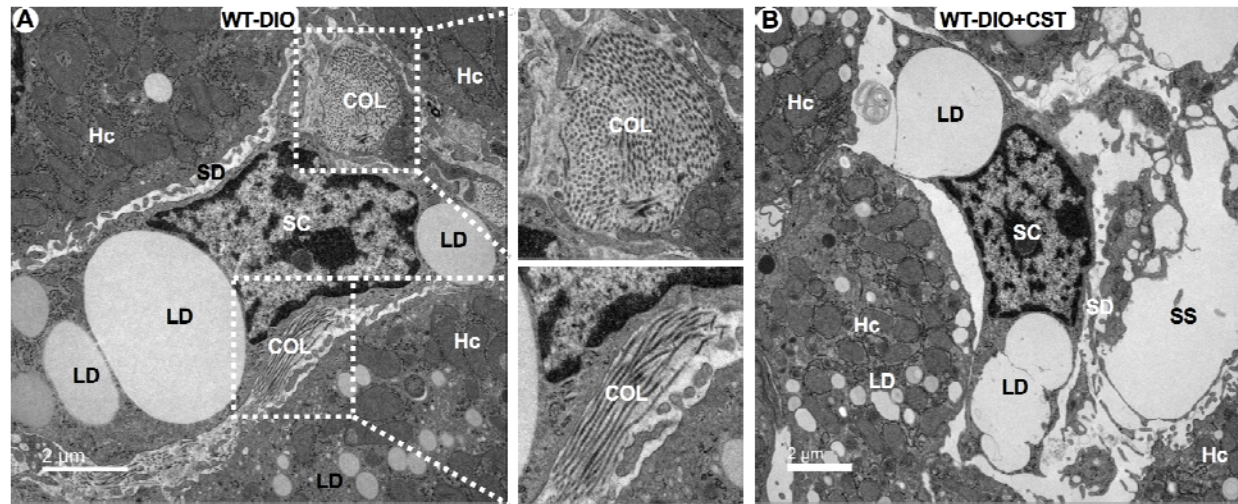
Supplementary Table 1. Primer sequences for genes used in the real-time PCR analysis

Description	Sequence 5'-3'			GeneBank Accession
<i>Arg1</i> -FP		CTCCAAGCCAAAGTCCTTAGAG		NM_007482
<i>Arg1</i> -RP		AGGAGCTGTCATTAGGGACATC		
<i>Ccl2/Mcp1</i> -FP		TTAAAAACCTGGATCGGAACCAA		NM_011333
<i>Ccl2/Mcp1</i> -RP		GCATTAGCTTCAGATTTACGGGT		
<i>Clec7a/Dectin1</i> -FP	GACTTCAGCACTCAAGACATCC		NM_020008	
<i>Clec7a/Dectin1</i> -RP	TTGTGTCGCCAAAATGCTAGG			
<i>Clec10a/Cd301</i> -FP	TGAGAAAGGCTTTAAGAACTGGG		NM_001204252	
<i>Clec10a/Cd301</i> -RP	GACCACCTGTAGTGATGTGGG			
<i>Emr1/F4/80</i> -FP	TTGTACGTGCAACTCAGGACT		NM_010130	
<i>Emr11/F4/80</i> -RP	GATCCCAGAGTGTTGATGCAA			
<i>Ifng</i> -FP		ATGAACGCTACACACTGCATC		NM_008337
<i>Ifng</i> -RP		CCATCCTTTTGCCAGTTCCTC		
<i>IL4/Bsf1</i> -FP		GGTCTCAACCCCCAGCTAGT		NM_021283
<i>IL4/Bsf1</i> -RP		GCCGATGATCTCTCTCAAGTGAT		
<i>IL10/Csif</i> -FP		GCTCTTACTGACTGGCATGAG		NM_010548
<i>IL10/Csif</i> -RP		CGCAGCTCTAGGAGCATGTG		
<i>Itgam/Cd11b</i> -FP	ATGGACGCTGATGGCAATACC		NM_001082960	
<i>Itgam/Cd11b</i> -RP	TCCCATTACGCTCTCCA			
<i>Itgax/Cd11c</i> -FP	CTGGATAGCCTTTCTTCTGCTG		NM_021334	
<i>Itgax/Cd11c</i> -RP	GCACACTGTGTCCGAACTCA			
<i>Mgl2</i> -FP		TTAGCCAATGTGCTTAGCTGG		NM_145137
<i>Mgl2</i> -RP		GGCCTCCAATTCTTGAAACCT		
<i>Mrc1/Cd206</i> -FP	CTCTGTTTCAGCTATTGGACGC		NM_008625	
<i>Mrc1/Cd206</i> -RP	CGGAATTTCTGGGATTCAGCTTC			
<i>Nos2</i> -FP		GTTCTCAGCCCAACAATACAAGA		NM_010927
<i>Nos2</i> -RP		GTGGACGGGTTCGATGTCAC		

SUPPLEMENTARY DATA

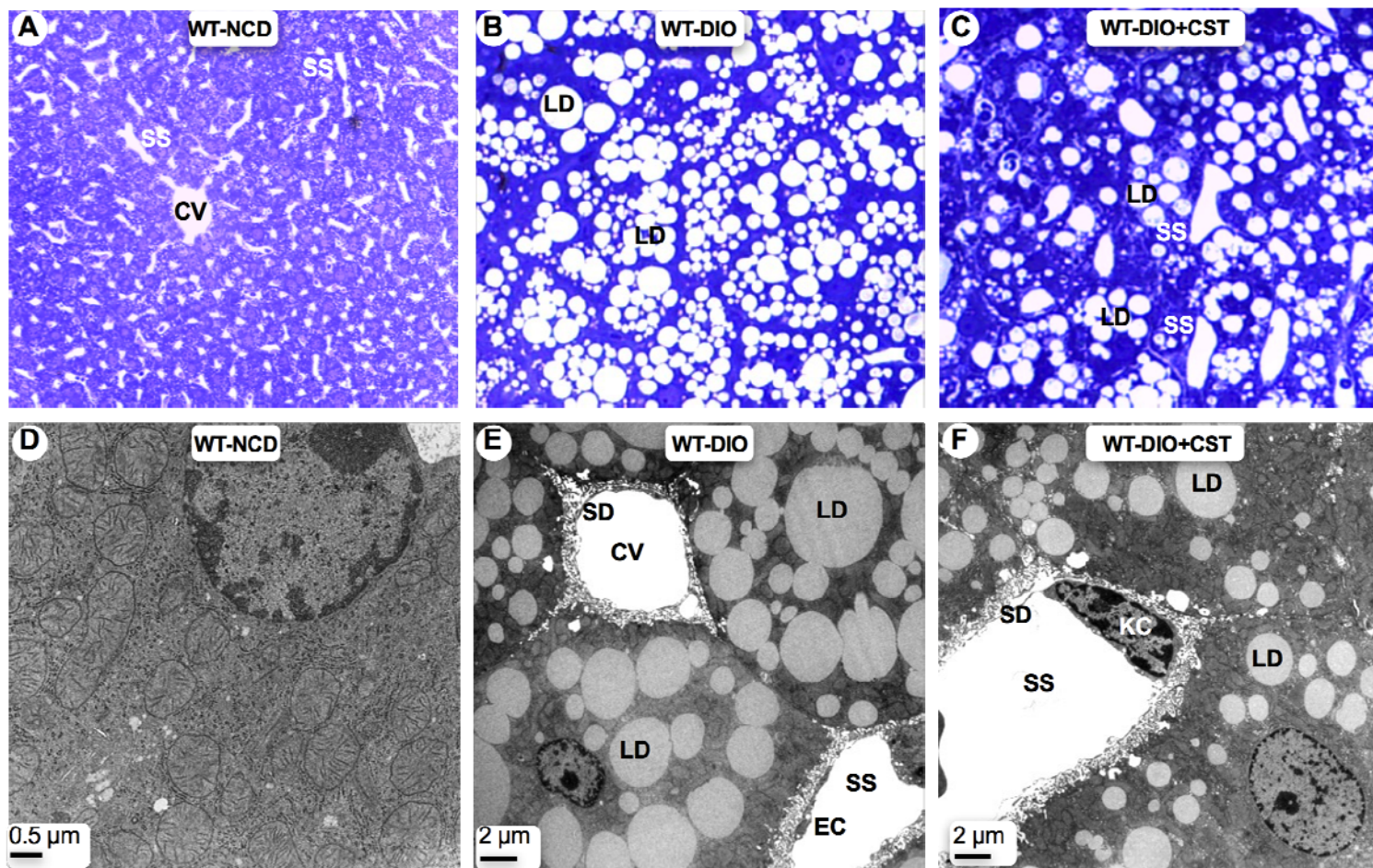
<i>Tnf/Tnfa</i> -FP		CCCTCACACTCAGATCATCTTCT		NM_013693	
<i>Tnf/Tnfa</i> -RP		GCTACGACGTGGGCTACAG			

Supplementary Figure 1. Stellate cells in WT-DIO liver. (A) Stellate cell (SC) in saline-treated DIO mice showing deposition of collagen around the SC. (B) SC in CST-treated DIO mice showing abolition of collagen deposition. **Plasma cytokines and chemokine.** (C) IL-2, note no change after treatment with CST. (D) IL-5, note no change after treatment with CST. (E) IFN γ , note CST caused marked decrease in IFN γ . (F) CCL2, note CST decreased CCL2 level.



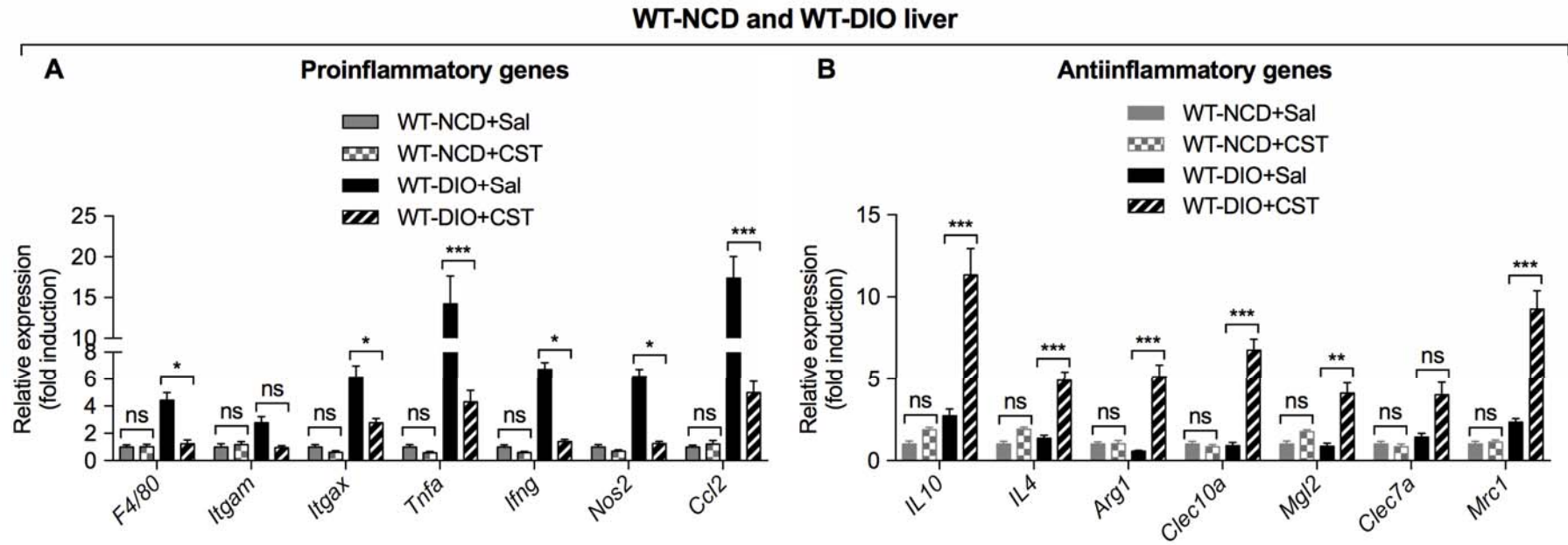
SUPPLEMENTARY DATA

Supplementary Figure. 2. Lipid droplets in toluidine blue stained semi-thin (1 μm) sections. (A) WT-NCD liver showing no lipids. (B) WT-DIO liver showing marked accumulation of lipids. (C) Treatment of WT-DIO mice with CST caused decrease in lipid droplets. **Lipid droplets at the ultrastructural level.** (D) TEM photograph of WT-NCD liver showing numerous mitochondria and rough endoplasmic reticulum but no lipid droplet. (E) TEM photograph of WT-DIO liver showing accumulation of lipid droplets. (F) TEM photograph of WT-DIO liver treated with CST. Note decrease in area of lipid droplets. CV, central vein; EC, endothelial cell; KC, Kupffer cell; L, lipid; M, mitochondria; Nuc, nucleus; S, sinusoid; SD, space of Disse.



SUPPLEMENTARY DATA

Supplementary Figure 3. Expression of genes in WT-NCD and WT-DIO liver. (A) Expression of proinflammatory genes. (B) Expression of anti-inflammatory genes.



SUPPLEMENTARY DATA

Supplementary Figure. 4. Effects of CST on body weight. (A) WT-NCD mice treated with saline or CST and (B) WT-DIO mice treated with saline or CST. **Effects of CST on food intake.** (C) WT-NCD mice treated with saline or CST and (D) WT-DIO mice treated with saline or CST. **Effects of CST on liver weight.** (E) WT-NCD mice treated with saline or CST and (F) WT-DIO mice treated with saline or CST. **Effects of CST on epididymal white adipose tissue (eWAT).** (G) WT-NCD mice treated with saline or CST and (H) WT-DIO mice treated with saline or CST.

