

DRAFT VERSION JANUARY 19, 2017

Preprint typeset using L^AT_EX style emulateaj v. 5/2/11

DENSE MOLECULAR GAS TRACERS IN THE OUTFLOW OF THE STARBURST GALAXY NGC 253

FABIAN WALTER^{1,2,3}, ALBERTO D. BOLATTO^{4,5}, ADAM K. LEROY⁶, SYLVAIN VEILLEUX⁴, STEVEN R. WARREN^{7,4}, JACQUELINE HODGE⁸, REBECCA C. LEVY⁴, DAVID S. MEIER^{9,2}, EVE C. OSTRIKER¹⁰, JÜRGEN OTT², ERIK ROSOLOWSKY¹¹, NICK SCOVILLE³, AXEL WEISS¹², LAURA ZSCHAECHNER¹, MARTIN ZWAAN¹³*Draft version January 19, 2017*

ABSTRACT

We present a detailed study of a molecular outflow feature in the nearby starburst galaxy NGC 253 using ALMA. We find that this feature is clearly associated with the edge of NGC 253's prominent ionized outflow, has a projected length of ~ 300 pc, with a width of ~ 50 pc and a velocity dispersion of ~ 40 km s⁻¹, consistent with an ejection from the disk about 1 Myr ago. The kinematics of the molecular gas in this feature can be interpreted (albeit not uniquely) as accelerating at a rate of 1 km s⁻¹ pc⁻¹. In this scenario, the gas is approaching escape velocity at the last measured point. Strikingly, bright tracers of dense molecular gas (HCN, CN, HCO⁺, CS) are also detected in the molecular outflow: We measure an HCN(1–0)/CO(1–0) line ratio of $\sim 1/10$ in the outflow, similar to that in the central starburst region of NGC 253 and other starburst galaxies. By contrast, the HCN/CO line ratio in the NGC 253 disk is significantly lower ($\sim 1/30$), similar to other nearby galaxy disks. This strongly suggests that the streamer gas originates from the starburst, and that its physical state does not change significantly over timescales of ~ 1 Myr during its entrainment in the outflow. Simple calculations indicate that radiation pressure is not the main mechanism for driving the outflow. The presence of such dense material in molecular outflows needs to be accounted for in simulations of galactic outflows.

Subject headings: galaxies: individual (NGC 253) — infrared: galaxies — galaxies: evolution

1. INTRODUCTION

Galactic-scale winds are an ubiquitous phenomenon in both starburst galaxies and galaxies that host active galactic nuclei (e.g., Veilleux et al. 2013). They are thought to be especially important at high redshift, where strongly starforming galaxies on the so-called galaxy ‘main-sequence’ dominate the star formation budget, and the number density of active galactic nuclei is greater. Winds provide negative mechanical feedback, and have been invoked to resolve a number of important issues in cosmology and galaxy evolution (see e.g., Veilleux et al. 2005 for a review). Although

galactic winds have been detected in galaxies out to high redshift, only in the nearby universe can they be observed panchromatically in emission to understand the mechanisms responsible for ejecting the gas. Steadily expanding observations and simulations show that winds include cold (neutral atomic and molecular) gas components, both in starburst-driven as well as AGN-driven outflows (e.g., in the case of M 82: Walter et al. 2002, Engelbracht et al. 2006, Roussel et al. 2010, Leroy et al. 2015a, other galaxies: e.g., Rupke et al. 2002, Alatalo et al. 2011, Aalto et al. 2012, Meier & Turner 2012, Rupke & Veilleux 2013), possibly through the entrainment of ambient material. This cold gas is very difficult to measure, but likely constitutes the mass-dominant phase in galactic winds. Mechanisms that have been proposed to drive cool winds include direct radiation forces (e.g., Murray et al. 2011), cosmic ray pressure gradients (e.g., Uhlig et al. 2012), pressure due to supernovae-driven superbubbles (Fujita et al. 2009, Bolatto et al. 2013), and progressive entrainment into the ionized flow facilitated by Kelvin-Helmholtz instabilities (Heckman et al. 2000). Recent models suggest that the cold gas could also be emerging from condensations of the hot ionized gas phase through runaway thermal instabilities (e.g., Faucher-Giguère & Quataert 2012, Zubovas & King 2012, Nayakshin & Zubovas 2012, Thompson et al. 2016, Bustard et al. 2016). The latter predictions imply a small spatial offset between the hot burst and the emergence of cold material condensing out of the wind. In most cases, observational constraints on the velocity of the outflowing gas, both neutral and ionized, indicate that the gas does not reach the escape velocity (above references), i.e. that the currently outflowing gas may be re-accreted at later cosmic times.

¹ Max Planck Institute für Astronomie, Königstuhl 17, 69117, Heidelberg, Germany

² National Radio Astronomy Observatory, PO Box O, 1003 Lopezville Road, Socorro, New Mexico 87801, USA

³ Astronomy Department, California Institute of Technology, MC105-24, Pasadena, California 91125, USA

⁴ Department of Astronomy, Laboratory for Millimeter-wave Astronomy, and Joint Space Institute, University of Maryland, College Park, Maryland 20742, USA

⁵ Visiting, Max-Planck Institute for Astronomy, Heidelberg, Germany

⁶ Department of Astronomy, Ohio State University, 100 W 18th Ave, Columbus, OH 43210, USA

⁷ Cray, Inc., 380 Jackson Street, Suite 210, St. Paul, MN 55101, USA

⁸ Leiden Observatory, Niels Bohrweg 2, 2333 CA Leiden, Netherlands

⁹ New Mexico Institute of Mining & Technology, 801 Leroy Place, Socorro, NM 87801, USA

¹⁰ Department of Astrophysical Sciences, Princeton University, Princeton, New Jersey 08544, USA

¹¹ Department of Physics, University of Alberta, Edmonton, AB, Canada

¹² Max-Planck-Institut für Radioastronomie, Auf dem Hügel 69, Bonn, Germany

¹³ European Southern Observatory, Karl-Schwarzschild-Strasse 2, 85748 Garching, Germany

NGC 253 is one of the best laboratories to study starburst-driven galactic-scale winds in detail due to its proximity ($D = 3.5$ Mpc, Rekola et al. 2005). It is known for the galactic wind emerging from its central ~ 200 pc (e.g., Sharp & Bland-Hawthorn 2010). The wind is seen in $H\alpha$ and X-ray emission (Strickland et al. 2000, 2002, Westmoquette et al. 2011), in neutral gas (Heckman et al. 2000), warm H_2 (Veilleux et al. 2009), and in OH emission and absorption (Turner 1985, Sturm et al. 2011). HST imaging reveals the entrained dust emission in optical broad-band imaging, already suggesting that the wind also carries significant amounts of molecular gas.

ALMA cycle 0 imaging revealed the molecular wind in NGC 253 in CO(1–0) emission (Bolatto et al. 2013). This molecular wind carries enough mass to substantially shorten the current star formation episode in this galaxy, or to definitively quench star formation over a much longer period if a substantial fraction of the gas were to reach escape velocity. In the interferometer imaging, the wind breaks up in molecular filaments or “streamers” emerging from the central starburst area. The brightest of these streamers is West of the central starburst and points to the South outlining an edge of the approaching side of the approximately conical ionized outflow (Westmoquette et al. 2011); we hereafter refer to it as the (south-west) *SW streamer*. In Meier et al. (2015) we present a cartoon of the central starburst region of NGC 253, and discuss other tracers of the molecular gas found in the central starburst region of NGC 253, while in Leroy et al. (2015b) we focus on the properties of the giant molecular clouds and the structure of the starburst itself.

In this study we present and discuss the properties of this brightest outflowing molecular gas streamer, as obtained from the combined cycle 0 and 1 ALMA observations together with new IRAM single-dish data. This paper is structured as follows: §2 summarizes the interferometric, single-dish, and Hubble Space Telescope observations, and §3 shows the results. In §4 we present a discussion of our findings, and §5 summarizes our conclusions. We assume a distance to NGC 253 of $D = 3.5$ Mpc (Rekola et al. 2005), leading to a linear (projected) scale of $1'' = 17$ pc.

2. OBSERVATIONS

2.1. ALMA Observations

The data presented here are based on ALMA cycle 0 and 1 observations and include IRAM 30 m and Mopra single dish observations to account for the missing short spacings in the interferometric ALMA imaging.

Two frequency setups were observed in ALMA band 3, one high-frequency setup (LSB: 99.8–103.7 GHz; USB: 111.8–115.7 GHz), that covers the (redshifted) CO(1–0) and CN lines, and one low-frequency setup (LSB: 85.6–89.6 GHz; USB: 97.4–101.4 GHz) that covers key high-density tracer molecules, such as HCN, HNC and HCO^+ (see Meier et al. 2015 for a full overview of all transitions covered by the observations). Additional details about the ALMA observations and reduction can be found in Bolatto et al. (2013), Leroy et al. (2015b), and Meier et al. (2015). The ALMA band 3 interferometric observations include:

ALMA high-frequency setup: A 7-point mosaic tar-

geting the CO(1–0) line to map the central 1 kpc ($\sim 1'$) of NGC 253 in the CO(1–0) transition. These observations used the following calibrators: J0038-2459 (phase), J2357-5311 (bandpass) and Uranus (amplitude). Cycle 1 observations were obtained on 19-Nov-2013, 01-Dec-2013, and (twice) on 02-Dec-2013. The total on-source integration time was 2.5 h, using typically 36 antennas. These observations were complemented by a 2.6 h, 7-pointing mosaic with the ALMA compact array (ACA) covering $\sim 2' \times 2'$ (2×2 kpc) at 75 pc resolution (cycle 1). These ACA observations used the following calibrators: J0038-2459 (phase), J2258-2758 (bandpass) and Neptune (amplitude). The ACA observations were executed on 07-Oct-2013, twice on 01-Nov-2013, three times on 05-Nov-2013, three times on 06-Nov-2013, and on 14-Nov-2013. The ACA observations were obtained using 9 antennas.

ALMA Low-frequency setup: A 3-pointing mosaic at 90 GHz along the NGC 253 bar (cycle 1), targeting the high-dipole molecules CS(2–1), HCN(1–0), $HCO^+(1–0)$, and a host of other molecules contained in the band (Meier et al. 2015). These observations used the following calibrators: J0038-2459 (phase), J2258-2758 (bandpass) and Neptune (amplitude). Observations were done on 31-Aug-2014, with a total of 27.5 minutes on-source using 32 antennas.

The cycle 1 data were combined with the cycle 0 data published in Bolatto et al. (2013) and Meier et al. (2015), and the combined data were used in the analysis by Leroy et al. (2015). Because the continuum in the NGC 253 starburst is very bright it is possible to self-calibrate on it. We applied self-calibration to remove residual phase and flux calibration errors inherent to the data and attain a dynamic range higher than otherwise possible. Phase information using the continuum were self-calibrated first followed by amplitude self-calibration.

Natural and Briggs robust-weighted, continuum-subtracted, cubes were created at 5 km s^{-1} velocity resolution. All values were primary beam corrected for all quantitative analysis. As a final step, for all comparisons we convolve the low- and high-frequency setups to a common beam size of $1.9''$ (32 pc). The final robust-weighted CO(1–0) cube has an rms of $1.6 \text{ mJy beam}^{-1}$ in 5 km s^{-1} channels and a beam size of $1.6'' \times 1.2''$ with PA of 71.5° . In velocity ranges where signal is present, deconvolution artefacts dominate the noise (despite self-calibration and careful cleaning the data is dynamic-range limited), and the practical noise floor is closer to $6.5 \text{ mJy beam}^{-1}$. For the HCN, CN, CS, and HCO^+ lines, the rms is 1 mJy beam^{-1} for a $1.9'' \times 1.9''$ beam.

2.2. Single Dish Observations

In the absence of ALMA total power measurements, we have corrected the ALMA interferometric imaging for zero spacings using the following single dish telescopes:

Mopra: We use measurements obtained by the Mopra telescope to correct the ALMA CO(1–0) observations (high-frequency setup), as discussed in Bolatto et al. (2013), Meier et al. (2015), and Leroy et al. (2015).

IRAM 30 m: We use new IRAM 30 m telescope measurements to correct the high-density tracer molecules (low-frequency setup). These observations cover all relevant tracer molecules, e.g., HCN, HCO^+ , CS (project

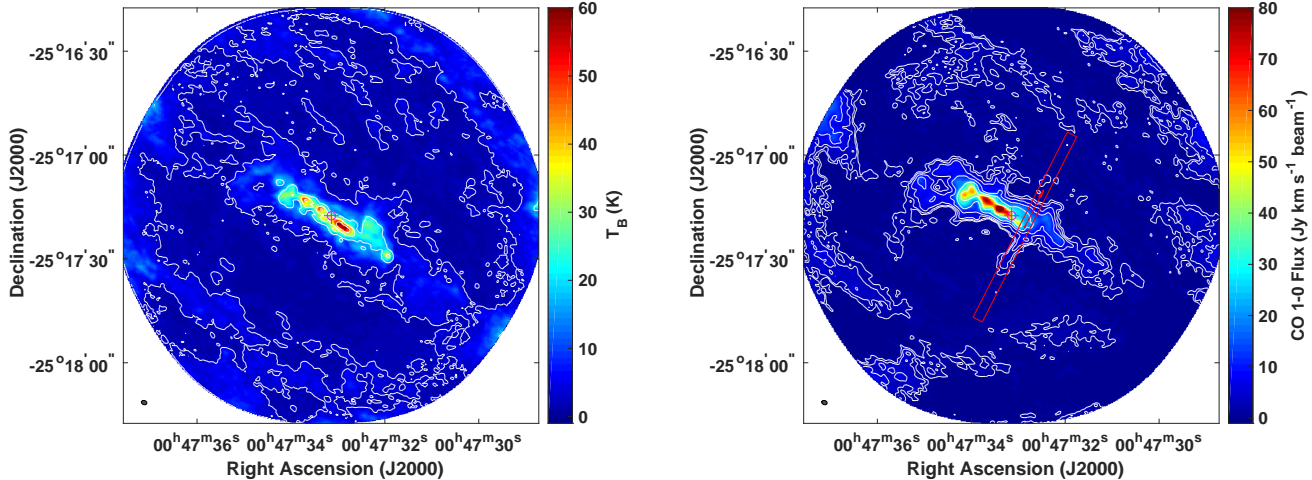


FIG. 1.— ALMA CO(1–0) observations of NGC 253. The kinematic center determined by Müller-Sánchez et al. (2010) at $00^{\text{h}}47^{\text{m}}33^{\text{s}}.14$, $-25^{\circ}17'17''.52$ (J2000) is indicated with a magenta cross, with the $\pm 1.2''$ 3σ uncertainty shown by the magenta circle. **Left:** peak brightness map of the CO(1–0) emission in NGC 253 covered by our 7–point ALMA band 3 mosaic (we present here the Briggs-weighted observations with a robust parameter of 0.5, which have a synthesized beam of $1.6'' \times 1.2''$ shown in the left bottom corner). Contours are drawn at 2.5, 5, 10, 20, 30, 40, and 50 K. The peak surface brightness in the map is 60 K. The emission is dominated by the bright central bar, but emission from the spiral arms in the disk is also visible towards the SE and NW edges of the covered area. Note that this map is corrected for the primary beam attenuation, so the noise increases at the edges of the mosaic. **Right:** velocity-integrated CO (1–0) flux density $S_{\nu}\Delta v$ over the velocity range 120–255 km s^{-1} , highlighting the *SW streamer* of the outflow. The contours correspond to 1.25, 2.5, 5, 10, 20, 40 $\text{Jy beam}^{-1} \text{ km s}^{-1}$. The red rectangle shows the orientation of the position-velocity diagram shown in Figs. 2–4, and 6–7 (centered at $00^{\text{h}}47^{\text{m}}32^{\text{s}}.86$, $-25^{\circ}17'20''.8$ with a position angle of 333° so that offsets are positive N of the central bar). The heliocentric velocity of the central bar material in this position-velocity cut is 280 km s^{-1} (see for example the top panel of Fig. 7).

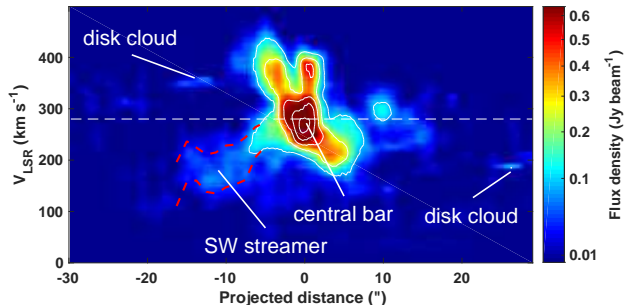


FIG. 2.— Position-velocity CO(1–0) diagram along the slit shown in Fig. 1 (equivalent to a long-slit spectrum). The emission is dominated by the intense emission from the central starburst region. The narrow features at offsets $\sim \pm 20''$ are due to molecular clouds in the galaxy’s rotating disk (labeled disk cloud). The CO (1–0) outflow *SW streamer* (negative offsets) is also labeled. The white dashed line shows the adopted reference velocity for emission in the central bar at this location in the galaxy, of 280 km s^{-1} . The contours indicate S_{ν} of 0.09, 0.25, 0.49, 0.81, and $1.21 \text{ Jy beam}^{-1}$. The color scale uses a square root stretch, and the noise in the data is $1.6 \text{ mJy beam}^{-1}$ in emission-free velocity ranges. A typical brightness for streamer material between the dashed lines is $40\text{--}60 \text{ mJy beam}^{-1}$.

209–14 during 4–9-Mar-2015). NGC 253 was above 20° for ~ 4.5 hours each day, resulting in a total of 12.6 h of on-source time with exceptional observing conditions. To map a $2' \times 2'$ field around the center of NGC 253 with uniform sensitivity, we obtained 36 back and forth on-the-fly scan-maps with $4''$ spacing, alternating both right ascension and declination. We used the E090 HIGH-DENS receiver setup spanning 81.335 to 89.335 GHz in the LSB and 97.335 to 105.335 GHz in the USB, allowing for simultaneous observations of high-density tracers including HCO^+ , HCN, and CS. We observed Mars for

pointing, focus, and calibration. The map has a sensitivity of 4 mK in a 3 km s^{-1} channel at 89 GHz . The frequency-dependent beam size ranges from $26''$ to $29''$.

In the case of CO(1–0), we combined the ALMA cube with the Mopra single dish data using the feathering Miriad task `immerge` with a gain of 16.2 Jy/K . The resulting cube was used as the model input in the CASA `clean` task on the ALMA-only data. We combined zero-spacings for the high-density tracer observations from the IRAM 30 m telescope with the ALMA cubes using the CASA task `feather`. For the ALMA-IRAM 30 m combination, prior to feathering, we applied a gain factor of 6.15 Jy/K on the 30-meter cubes. As in the CO(1–0) combination, the final cubes were created using the feathered cubes as models for the inversion of the ALMA data. This was done by including the feathered cubes as models in the ALMA dataset using `setjy`, followed by `clean` using the same parameters as those used to create the original ALMA cubes. In both cases this zero spacing correction significantly improved the negative bowls in the original (ALMA 12m-only) data cubes.

2.3. Hubble Space Telescope Observations

We compare our ALMA observations to the ionized gas outflow, traced by *Hubble Space Telescope* imaging of hydrogen recombination lines. We use a WFPC2 $\text{H}\alpha$ image from Proposal ID 5211, first presented in Watson et al. (1996). That project observed NGC 253 in the F656N (on) and F675W (off) filters. We pair this with Paschen- β imaging from two projects (Proposal IDs 12206 and 13730), which observed the nuclear region in the F128N (on) and F130N (off) filters. In both cases we use the *Hubble* legacy archive enhanced data products, beginning with the drizzled images. For the $\text{H}\alpha$ we found it necessary to combine the two visits to reject cosmic ray

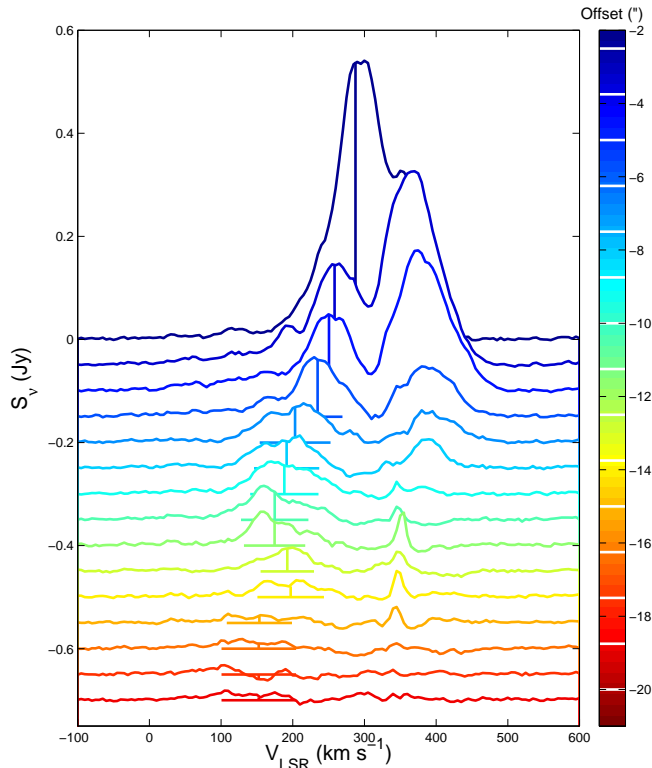


FIG. 3.— CO(1–0) spectra along the southern part of the position-velocity cut in Figs. 1 and 2, following the *SW streamer*. The colors indicate offsets from the plane, as indicated by the color bar to the right (spectra are offset vertically by 0.05 Jy for display purposes). At small offsets, the emission is dominated by the starburst in the central bar, and for intermediate offsets ($-4''$ to $-10''$) line splitting is observed. The diffuse molecular outflow is then picked up at $v_{\text{LSR}} \sim 200 \text{ km s}^{-1}$, and can be traced out to offsets of $-18''$ (the horizontal and vertical bars indicate the Gaussian-fit FWHM, central velocity, and amplitudes in the streamer). Given the low S/N of the three spectra at the largest offsets, we do not use their fits in our subsequent analysis

. The narrow CO(1–0) feature around $v_{\text{LSR}} \sim 350 \text{ km s}^{-1}$ is due to molecular gas emission from a GMC in the disk of NGC 253, labeled in Fig. 2 as “disk cloud”.

artifacts. Then for both sets of images, we aligned the on- and off-line filters and fit a median scaling between the two in a region near but not in the nucleus. The scaling factor derived was 0.0241 and 0.95 for F675W and F130N, respectively. We used this scaling to subtract the stellar contamination from the narrow-band on-line image. We then converted the resulting continuum-subtracted image to have units of $\text{erg s}^{-1} \text{ cm}^{-2} \text{ sr}^{-1}$ using the observatory supplied counts-to-flux conversion (PHOTFLAM keyword) and bandpass width (PHOTBW keyword). The values employed for $H\alpha$ and Paschen- β were 1.461×10^{-16} and 4.278×10^{-19} for PHOTFLAM, and 53.768 and 357.438 for PHOTBW, respectively. Finally, both images were convolved to $1.5''$ resolution and aligned to the ALMA astrometric grid.

3. RESULTS & DISCUSSION

3.1. CO(1–0) map of the full FOV

For reference we show the CO(1–0) peak brightness map of our ALMA mosaic in Fig. 1. The emission is dominated by the central bar in NGC 253 that hosts the nuclear starburst. The second panel in Fig. 1 shows the CO(1–0) emission integrated over a velocity range that

highlights the *SW streamer*. The position and orientation of the position-velocity cut used in our subsequent analysis of the *SW streamer* is illustrated by the red box.

3.2. Spectra Along the SW Streamer

The position-velocity (pv) diagram of the *SW streamer* is shown in Fig. 2, where the prominent outflow is highlighted with dashed red lines; these lines represent the FWHM resulting from Gaussian fitting as a function of position offset. As the orientation of this pv diagram is essentially perpendicular to the major axis, we do not expect the velocities to be affected by the rotation of the disk. A different view of the same data is shown in Fig. 3, which plots the CO(1–0) spectra along the pv diagram for offsets. The spectral features identified with the streamer and the results from the Gaussian fits (central velocity, peak, and velocity width) are also displayed in Fig. 3.

The Gaussian fitting results are summarized in Fig. 4. The left panel shows the central velocity and FWHM velocity width (Δv) of the emission as a function of position along the pv diagram. A first order polynomial fit to the central velocity as a function of position is overplotted as a red line. The right panel shows the velocity and deconvolved (by subtracting the beam size in quadrature) FWHM spatial width as a function of position: the outflow has a deconvolved FWHM width of approximately 40–50 pc. The reference velocity is indicated by a dashed white line in Fig. 2. It corresponds to the approximate gas velocity of the bar at the base of the outflow.

3.3. Is the Molecular Outflow Accelerating?

The *SW streamer* is blue-shifted with respect to the reference velocity, implying that the material is approaching us. This blueshift gets larger with increasing distance from the galaxy plane, which can be interpreted as an accelerating continuous outflow. This interpretation of the data is, however, not unique. If the original ejection occurred over a short period of time and had a distribution of velocities, the fast ejecta would have gotten farther away than the slower ejecta, giving rise to a velocity gradient along the streamer. The apparent projected velocity gradient could also be due to a gradient in the inclination of the outflow cone, with the (more or less) constant velocity of CO gas becoming increasingly aligned with the line of sight at farther distances from the central bar. Such geometry has been reported in the ionized gas of the bubble of NGC 3079 (e.g., Veilleux et al. 1994, Cecil et al. 2001). The ionized outflow of NGC 253, however, seems more like an open-ended cone than a bubble (Westmoquette et al. 2011), suggesting that this explanation is probably less likely.

The translation of observed line-of-sight velocities into actual velocities is crucial to determine the mass outflow rate and whether the material escapes the galaxy or not. The inclination of the galaxy is 78° (Westmoquette et al. 2011), so the projected edge of the southern outflow cone will have an inclination of $78^\circ - 90^\circ = -12^\circ$, where the negative sign indicates it is pointing towards us, resulting in blue-shifted emission. If the emission originates precisely from this projected edge, the $\sin i$ correction would be very large (a factor of ~ 5). Based on the median of the distribution of $\tan i$ for the surface of a cone

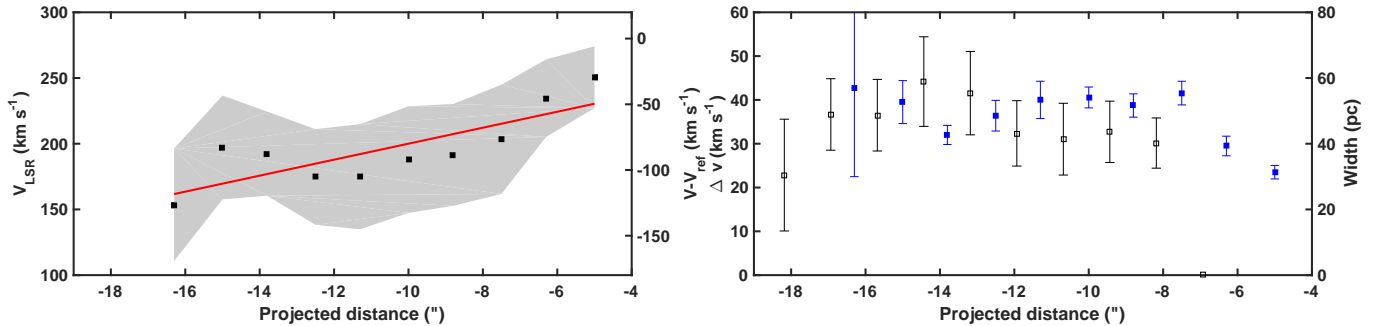


FIG. 4.— Fit results for the CO emission in the *SW streamer*. **Left:** Line-of-sight velocity versus projected distance. Note that we estimate that the projection correction is a factor of ~ 3 for velocity (see text), while it is almost negligible for distance. The points show the central velocity as a function of position along the slit (origin is the center of the slit which corresponds to the center of the bright bar emission; c.f., Fig. 1). The grey region indicates the FWHM of the CO line at the different positions. The red line is a linear fit to the central velocity data. The left y-axis labels indicate the measured velocities, whereas the velocities on the right y-axis are shown relative to a fiducial reference spectrum at 0 offset ($V_{ref} = 280 \text{ km s}^{-1}$; Fig. 2). **Right:** Velocity and spatial width versus projected distance: The black open squares show the FWHM of the spectral line (indicated as a grey region in the left panels) as a function of offset, with corresponding scale on the left axis. The blue points show the spatial FWHM of the *SW streamer* (deconvolved), measured using a moment map created for the relevant channels, with corresponding scale on the right axis.

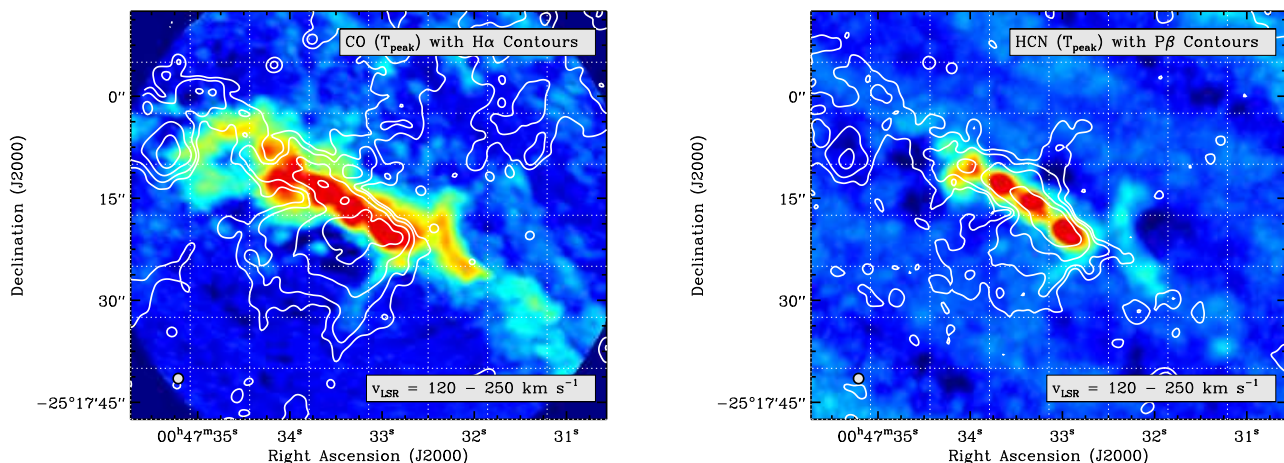


FIG. 5.— Comparison of the molecular gas (ALMA) and ionized gas (HST) emission in the outflow. The molecular maps show the peak temperature in the emission in CO(1-0) and HCN(1-0) over a velocity range of $120\text{--}250 \text{ km s}^{-1}$, chosen to highlight the *SW streamer* of the molecular outflow. The ionized gas outflow is shown in H α white contours in the left, and in Paschen- β white contours in the right panel (contours are $1, 4, 16, 64 \times 10^{-5} \text{ erg s}^{-1} \text{ cm}^{-2} \text{ sr}^{-1}$; both panels show continuum-subtracted HST observations). The coordinate grid is overlaid to facilitate comparison. The *SW streamer* is already clearly apparent in HCN emission.

with the opening angle and orientation as determined by Westmoquette et al. (2011) for the ionized gas outflow, Bolatto et al. (2013) argue that a correction factor of ~ 3 is more likely, and we adopt that value here. Note that, in practice, the actual factor can range from ~ 1 to ∞ so the projection correction has large uncertainties.

We measure a gradient of $dv/dr = 6.1 \text{ km s}^{-1}/['']$ or $\sim 36 \text{ km s}^{-1}/[100 \text{ pc}]$ from the polynomial fitting shown in Fig. 4 (the symmetric ordinary-least-squares bisector yields a 25% higher value). Adopting the aforementioned projection correction factor of 3 which includes both the corrections for distances and velocities, we derive an actual velocity gradient of $\sim 100 \text{ km s}^{-1}/[100 \text{ pc}]$, or $\sim 1 \text{ km s}^{-1}/[\text{pc}]$. Towards the end of the detected outflow we measure a line-of-sight outflow speed, relative to our reference disk velocity, of 120 km s^{-1} . With the projection correction, this translates into an actual outflow speed of $\sim 360 \text{ km s}^{-1}$. The escape velocity of NGC 253 can be approximated using equation 16 in Rupke, Veilleux, & Sanders 2002, and the circular veloc-

ity by Hlavacek-Larrondo et al. 2011. This yields an escape velocity of $\sim 500 \text{ km s}^{-1}$ (with significant error bars), i.e. the measured outflow velocity is approaching the escape velocity.

The velocity dispersion and width of the *SW streamer* are consistent with the dynamical age of the feature. The dynamical age of the streamer is $\sim 1 \text{ Myr}$, corresponding to the approximate ratio of its deprojected speed of $\sim 300 \text{ km s}^{-1}$ and length of $\sim 300 \text{ pc}$. The measured velocity dispersion $\Delta v \sim 35 - 40 \text{ km s}^{-1}$, which would naturally produce a structure with a width of $\sim 40 \text{ pc}$ in 1 Myr , very similar to the measured physical width (Fig. 4). If the feature were significantly older than 1 Myr , it would have to be confined (by external pressure or magnetic fields) to stay as narrow in spatial extent as observed. This implies that, unless such confinement is present, the outflow velocities cannot be much slower than 300 km s^{-1} .

3.4. Deep Imaging of the Ionized Gas

Figure 5 compares the outflow observed in molecular gas (left: CO, right: HCN) to the well-known ionized gas outflow (left: H α , right: Pa β). The tracers of the ionized outflow shown here (H α and Pa β), are significantly affected by extinction towards the Northern part of the galaxy. The ALMA images correspond to peak intensity over the range $v = 120 - 250 \text{ km s}^{-1}$, highlighting the disk, eastern shell, and western outflow. The *SW streamer* aligns closely with the edge of the outflow as seen in both H α and the more extinction-robust Pa β imaging (contours). In fact the streamer aligns with bright features in both recombination lines, further solidifying the association of this feature with the ionized gas outflow. The higher density of gas near the cold streamer presumably leads to a higher emission measure and corresponding emissivity of ionized gas. We note that the feature seen in dense gas emission on the other side of the disk (i.e. opposite to the *SW streamer*) is likely due to peculiar motions in the NGC 253's disk. This region was already identified in early high-density tracer observations using OVRO (Knudsen et al. 2007).

The molecular component seems to confine the ionized features in the left panel of Fig. 5 (CO + H α), with the ionized gas tapering to emerge from the center of the circumnuclear starburst. As noted previously, both recombination lines are brighter to the south of the galaxy, consistent with that being the approaching side of the outflow. Strikingly, extinction due to the surrounding disk is strong enough that aside from one bright pillar, even Pa β emission is not visible north of the starburst region.

Perhaps surprisingly, there is little recombination line emission (and thus little sign of very recent massive star formation) in the far western part of the disk. Also, we do not see strong emission centered on the putative expanding molecular shells identified in Sakamoto et al. (2006). Bolatto et al. (2013) argued that these shells are associated with the molecular streamers in the outflow and are presumably driven by young stellar clusters of $M_* \sim 10^5 M_\odot$. If the shells are driven by stellar feedback, the population driving them must be either older than $\sim 5 \text{ Myr}$ or so embedded as to remain inconspicuous in the Pa β image.

3.5. Dense Gas in the Outflow

From Fig. 5, we conclude that HCN(1-0) and CO(1-0) emission is present along the *SW streamer* in the relevant velocity range $120-250 \text{ km s}^{-1}$. In Fig. 6 we show the position velocity diagrams for high-dipole molecules (HCN, HCO $^+$, CS, and CN) associated with dense gas and compare them to the CO emission (CN is usually the chemical byproduct of the photodissociation of HCN). It is clear from Figs. 5 and 6 that the dense gas tracers also show the same outflow characteristics apparent in CO(1-0), at position offsets $< -5''$ and line-of-sight velocities of $< 300 \text{ km s}^{-1}$. HCN and HCO $^+$ emission in an outflow have to date only been reported in a few systems: These include the ULIRG QSO Mrk 231 (Aalto et al. 2012, Lindberg et al. 2016), a system with $\text{SFR} \sim 200 M_\odot \text{ yr}^{-1}$, 70 times larger than that of NGC 253. In NGC 1266, velocity wings are detected in CS(2-1) and HCN(1-0) (Alatalo et al. 2015). In NGC 1068, García-Burillo et al. (2014) report dense molecular gas detections in an

AGN-driven outflow. In the starburst galaxy M82 the detection of dense gas tracers at the base of its molecular outflow (Walter et al. 2002, Leroy et al. 2015a) have been reported by Salas et al. (2014).

The clear detection of dense gas tracers in the *SW streamer* of NGC 253 provides an interesting new constraint on small spatial scales of outflowing gas. Note that the CN emission suffers from artificial velocity broadening due to blending of hyperfine components: the brightest CN hyperfine component ($1,3/2,5/2 \rightarrow 0,1/2,3/2$) is at 113490.9 MHz, and the two brightest satellites (a factor of 3 fainter) are ($1,3/2,1/2 \rightarrow 0,1/2,1/2$) at 113499.6 MHz and ($1,3/2,3/2 \rightarrow 0,1/2,3/2$) at 113508.9 MHz, corresponding to 24 km s^{-1} and 50 km s^{-1} blueward of the main component (see Skatrud et al. 1983 for CN transitions and rest frequencies).

We quantify the relation between the different transitions observed in the streamer using Fig. 7, in which we present spectra in CO, HCN, HCO $^+$, CS, and CN at different offsets from the center (as before, all data are on a common resolution of $1.9''$). These spectra show both emission from the molecular gas streamer (at velocities $\sim 200 \text{ km s}^{-1}$) as well as emission from the disk of NGC 253 ($\sim 400 \text{ km s}^{-1}$) which allows us to immediately compare their line ratios. In the central region we measure peak flux densities for CO, CN, CS, HCN and HCO $^+$ of 1548.0, 139.8, 66.3, 112.6, and 123.5 mJy beam $^{-1}$. Consequently, we measure a flux ratio of ~ 13.8 between CO and HCN, which corresponds to a Rayleigh-Jeans brightness temperature ratio of ~ 8 . Such ratios, indicating a high dense gas fraction, is typical of starburst environments (e.g., Gao & Solomon 2004) and also seen in some of the densest regions of nearby star forming disks (e.g., Usero et al. 2015).

At an offset of $-6.5''$, significantly off the central starburst region and clearly corresponding to the kinematically distinct *SW streamer*, we measure the following values for the outflow feature at $\sim 200 \text{ km s}^{-1}$ (in the same order and units as above): 154.0, 9.8, 7.0, 12.8, 10.4. These values yield a CO/HCN peak flux density ratio ~ 12 . This is very similar to the value of the CO/HCN ratio in the starburst, and the same holds true for ratios of CO to the other molecules. By contrast, the corresponding values for the emission that we kinematically identify with the background rotating disk component of the galaxy (visible at a velocity of $\sim 400 \text{ km s}^{-1}$ in Fig. 7) are 193, 8.4, 1.9, 5.6, 6.4 (same order and units as above). These yield a CO/HCN peak flux density ratio ~ 35 , a factor of 3 higher than the starburst or the streamer. Such a value for the CO/HCN ratio is in excellent agreement with typical measurements in the *disks* of nearby galaxies (Usero et al. 2015). *We conclude that the fraction of dense molecular gas in the SW streamer of the outflow is high and stays high throughout the region where we detect emission.* Moreover, the material in the molecular streamer displays a dense gas fraction that is similar to that of the starburst region and significantly higher than that of the main disk of NGC 253, strongly suggesting a starburst origin for the gas in the streamer.

3.6. Mass and Density of the SW Streamer

A key result in the study of Meier et al. (2015) is that the CO(1-0), HCN(1-0), and HCO $^+$ (1-0) transi-

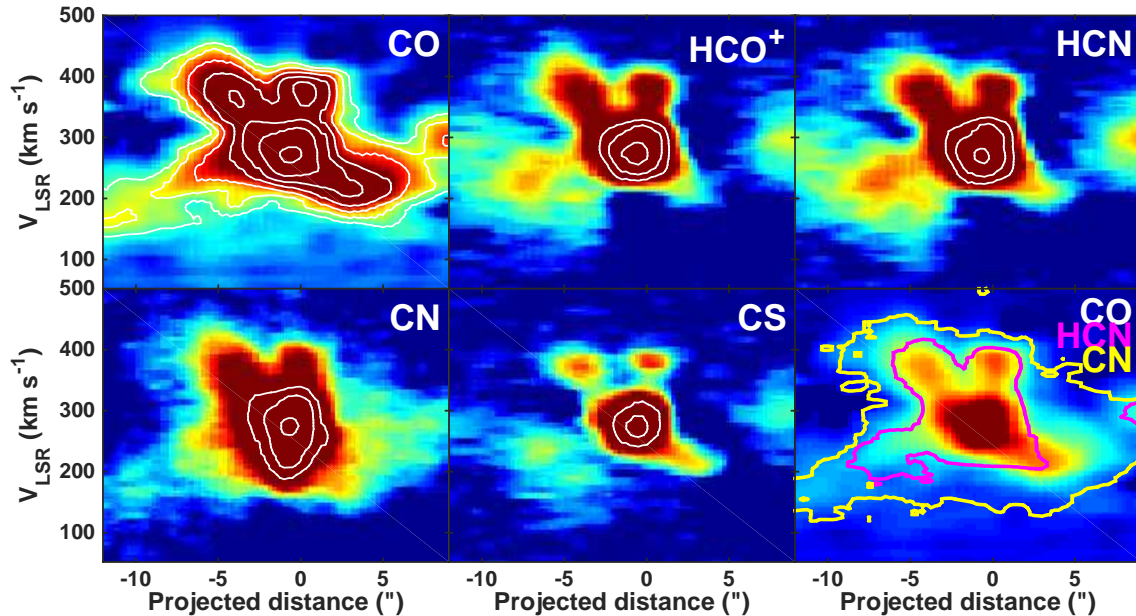


FIG. 6.— Position–velocity diagrams for a range of gas tracers, showing dense-gas emission in the *SW streamer* at offsets $-5''$ to $-12''$ (see Fig. 2). The panels show emission for individual lines convolved to a common resolution of $1.9''$ (left-to-right, top-to-bottom): CO(1–0), HCO⁺(1–0), HCN(1–0), CN (including blended hyperfine structure, see §4.1.3), and CS(1–0). The white contours are at 50, 90, 160, 290, 530, 950 mJy beam⁻¹ in all panels the noise is ~ 1 mJy beam⁻¹ for the high density tracers, and ~ 1.5 mJy beam⁻¹ for the CO at $1.9''$ resolution. The color scale is 0–250 mJy beam⁻¹ for CO and 0–22.5 mJy beam⁻¹ for the other species with a square root stretch. The *bottom right* panel shows the CO spectrum with contours of CN (yellow contour at 50 mJy beam⁻¹) and HCN (magenta contour 100 mJy beam⁻¹) overlaid. Note that all data cubes except for the CN incorporate total power information from single-dish (Mopra for CO, IRAM 30m for the rest, see §2.1.2).

tions are optically thick (and in fact have similar optical depths, $\tau \sim 5$) in the central region of NGC 253. The fact that the line ratios we measure do not change from those in the central region suggests that their emission is also optically thick in the *SW streamer*. This has important potential consequences for the molecular gas mass in the outflow. The CO(1–0) luminosity of the streamer is $L_{\text{CO}} \sim 2.8 \times 10^6 \text{ K km s}^{-1} \text{ pc}^2$, with an approximate area of $\sim 1.1 \times 10^4 \text{ pc}^2$ and an integrated surface brightness of $T_{\text{CO}} \Delta v \sim 250 \text{ K km s}^{-1}$. In order to obtain a firm lower limit for its mass Bolatto et al. (2013) used a CO-to-H₂ conversion factor $\alpha_{\text{CO}} = 0.34 M_{\odot} (\text{K km s}^{-1} \text{ pc}^2)^{-1}$ based on optically thin CO(1–0) emission. This leads to a “minimum mass” of the streamer of $\sim 10^6 M_{\odot}$ (~ 13 times lower than what one would derive with the typically assumed Galactic conversion factor).

3.6.1. Inferred volume densities and implications for dense gas excitation

The projected area of the streamer is $\sim 240 \times 60 \text{ pc}^2$ (or $\sim 10^{41} \text{ cm}^2$), leading to an average H₂ column density of $N(\text{H}_2) \sim 4 \times 10^{21} \text{ cm}^{-2}$ in the plane of the sky. If we assume that the feature has cylindrical geometry (depth \sim width) this results in an average volume density of 40 cm^{-3} . This is completely insufficient to excite the detected dense gas tracers through collisions: for example, the critical density (defined as the density at which the rate of the collisional depopulation of a quantum level equals the spontaneous radiative decay rate) for the HCN(1–0) emission is $2.6 \times 10^6 \text{ cm}^{-3}$. As is frequently pointed out, however, what is more relevant to the excitation is the ‘effective excitation density’, which includes the summation of all collisional transitions to the lower level and the effect of radiative trapping in

an optically thick environment (e.g., Stacey et al. 2011, Shirley et al. 2015). The effective excitation density can be 1–2 orders of magnitude lower than the critical density even for HCN, particularly in environments of high optical depth (Shirley et al. 2015). Nonetheless, even after taking these effects into account our derived average gas density would be still 2–3 orders of magnitudes too low to explain the presence of bright emission from HCN and other high-dipole molecules. Note also that the line-widths are large (Fig. 7), which lowers the effect of radiative trapping.

There are a number of factors that could bring these numbers in agreement. First of all is the clumping – the molecular gas is likely not distributed smoothly. The observed surface brightness in the *SW streamer* at 32 pc resolution is $T_{\text{b}}^{\text{obs}} \sim 1.5 - 2 \text{ K}$. Assuming an intrinsic brightness of $T_{\text{b}} \sim 100 \text{ K}$ (not unreasonable since the gas in the streamer is likely warm), the resulting area clumping factor would be $\sim T_{\text{b}}/T_{\text{b}}^{\text{obs}} \approx 50 - 70$, corresponding to a clumping factor in volume of $50^{3/2} \sim 350 - 600$. This implies that our bulk density of 40 cm^{-3} is physically closer to $2 \times 10^4 \text{ cm}^{-3}$, with typical column densities of $N(\text{H}_2) \sim 10^{22} \text{ cm}^{-2}$. Note that these estimates come from the “minimum mass” yielded by the assumption of an optically thin CO-to-H₂ conversion factor. Depending on the optical depth of the CO(1–0) transition, the actual conversion factor (and consequently the derived molecular mass and resulting mass outflow rate) could be factors of few to several times higher. To produce bright HCN emission it would be more comfortable to raise the mass in the streamer by a factor of a few, which would raise the physical volume density to 10^5 cm^{-3} and reach conditions where HCN(1–0) would be efficiently excited. Following this line of reasoning, the bright HCN emission

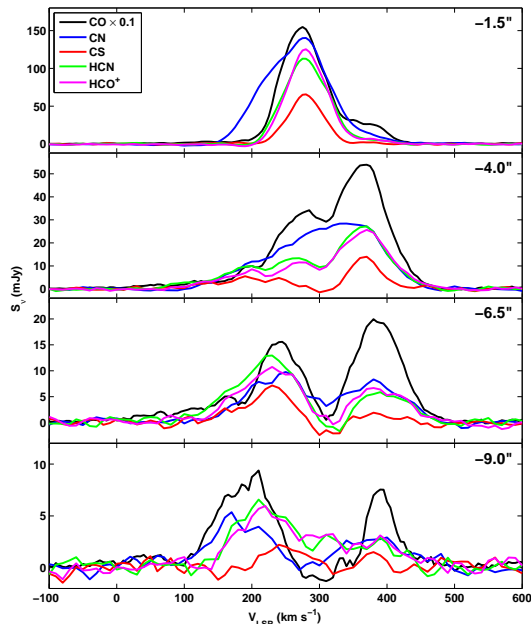


FIG. 7.— Spectra along the southern outflow at different offsets from the centre (shown in the top right of each panel in arcsec, ‘0’ offset corresponds to the plane of the disk). The black lines indicate the CO emission (scaled down by a factor of 10 for display purposes), and the CN, CS, HCN, HCO+ spectra are shown in blue, red, green, and magenta, respectively (all data have been convolved to the same beam of $1.9''$). Note that the CN line is artificially broadened by the blended hyperfine structure (see §3.5). The feature at $\sim 200 \text{ km s}^{-1}$ is associated with the *SW streamer*, and the emission at $\sim 400 \text{ km s}^{-1}$ is from the disk. Note how the ratio of CO / (dense gas tracer) is much lower in the outflow (and similar there to the central starburst region at offsets $-1.5''$) than in the disk, suggesting that dense clumps with properties similar to the dense gas in the starburst (and of much larger density than gas in typical disk GMCs) survive in the outflow. .

in the streamer suggests that the minimum molecular outflow rate of $3 M_{\odot} \text{ yr}^{-1}$ is probably an underestimate by factors of a few (Bolatto et al. 2013).

3.6.2. Excitation by electrons?

Collisions with electrons are also an effective way of exciting polar molecules (Dickinson et al. 1977). In fact they are the main mechanism for HCN excitation in comets (Lovell et al. 2004). Calculations show that the rate coefficient for excitation of HCN(1–0) by collisions with electrons is $> 10^5$ times larger than for collisions with H_2 (Saha et al. 1981; Faure et al. 2007). The reason why electrons are usually not considered as important collisional partners for HCN is that the electron fraction, x_e , in dark molecular clouds is thought to be $x_e \sim 10^{-8}$ or lower, controlled by cosmic ray ionization (e.g., Flower et al. 2007). But for $x_e \gtrsim 10^{-6}$ excitation by collisions with electrons will be important and likely dominant. The *SW streamer* is close to and probably embedded in the ionized flow, so it is possible that it possesses a higher ionization fraction than a typical dark cloud, and HCN(1–0) is mostly excited by electrons. This could also be the case if, for example, the outflow is cosmic-ray driven. We note, however, that the line ratios in the *SW streamer* are very similar to the line ratios observed in the starburst (Fig. 7), which makes it unlikely that the excitation mechanisms that dominate in one region do not also dominate in the other.

3.6.3. Constraints to mass and surface density from extinction

We can use the extinction inferred for the *SW streamer* from the observed $\text{H}\alpha$ to $\text{Pa}\beta$ line ratio to independently constrain its molecular mass. The typical $\text{H}\alpha/\text{Pa}\beta$ ratio in the streamer is $R_{obs} = 4.5 - 5$, while the expected intrinsic line ratio in a 10^4 K plasma is $R_{int} \approx 17.5$ for case B recombination (Osterbrock & Ferland 2006). For a Cardelli, Clayton, & Mathis (1989) extinction curve, the ratio of extinction at $1.28 \mu\text{m}$ to extinction at $0.66 \mu\text{m}$ is $r_{P\beta H\alpha} = A_{\text{Pa}\beta}/A_{\text{H}\alpha} \approx 1/3$. Thus explaining the observed line ratio with a single screen of extinction in front of the ionized gas requires $A_{\text{H}\alpha} = -2.5 \log [R_{obs}/R_{int}] / (1 - r_{P\beta H\alpha}) \approx 2 - 2.2$, which results in $A_V \sim 2.5$. For the Milky Way, this implies a molecular column density in the plane of the sky of $N(\text{H}_2) \sim 2.5 \times 10^{21} \text{ cm}^{-2}$ (Bohlin, Savage, & Drake 1978). The screen geometry is a lower limit to the column density, since any unextincted ionized gas emission in front of the screen leads to an increase in R_{obs} , while conversely any extinction on the back side of the ionized emission would remain undetected. To account for some of these effects a ‘‘double screen’’ geometry is usually preferred, leading to $N(\text{H}_2) \sim 5 \times 10^{21} \text{ cm}^{-2}$. We would reach a 20% larger higher value if we assumed that the dust was mixed with the gas. These numbers are consistent with the ‘‘lower limit’’ mass estimate from CO inferred above. Optically thin CO emission, however, is somewhat surprising given the relatively low CO/HCN ratio in the streamer, reminiscent of the central starburst region. Thus it is likely that there is significant ionized gas in front of the streamer. ALMA observations of higher-J CO lines will help to constrain the properties of the *SW streamer* and the conditions in the molecular outflow further.

3.7. The driving of the SW Streamer

The mechanisms to impart momentum and accelerate cold gas in a galactic outflow are not well understood. The presence of molecular material $\gtrsim 300 \text{ pc}$ away from the central bar, particularly in the form of dense gas as traced by HCN, HCO+ and CS, already provides strong constraints on the stability of wind-entrained clouds against photo and thermal evaporation, Kelvin–Helmholtz instabilities, and shedding due to ablation (e.g., Marcolini et al. 2005). Simulations of radiative clouds embedded in a supersonic flow show that radiative cooling stabilizes clouds against destruction (Cooper et al. 2009). Radiative clouds undergo a lower acceleration and have a higher Mach number relative to the flow than adiabatic (energy-conserving) clouds. They do experience fragmentation due to Kelvin–Helmholtz instability, but the resulting cloudlets are denser and are more resistant to destruction than adiabatic clouds, and they are drawn into the flow creating filaments. Additionally, magnetized clouds entrained in a hot wind have also been shown to be more stable than unmagnetized ones, even for very moderate initial internal magnetic fields, while also leading to filamentary structures (McCourt et al. 2015). In a set of recent calculations, Scanapieco & Brügggen (2015) show that supersonic flows suppress the Kelvin–Helmholtz instability thus allowing cooling clouds to survive longer, but the compression of

the cloud also makes its acceleration less efficient so that they only reach $\sim 15\%$ of the hot flow velocity before being disrupted. The inclusion of cloud evaporation induces further compression and naturally produces highly elongated, filamentary clouds similar to the streamers we observe, but although it can help the clouds survive even longer it also makes the momentum transfer less efficient, resulting in even lower final velocities before disruption (Brüggen & Scannapieco 2016). Very recent simulations by McCourt et al. (2016), however, suggest that crushed clouds shatter into tiny, dense, cloudlets that do not disappear and can be much more easily accelerated by the hot wind, making the entrainment process efficient. In this scenario the *SW streamer* could be composed of a collection of dense molecular clumps embedded in the much hotter outflow.

Notably, a feature corresponding to the molecular gas streamer is also seen in radio continuum maps obtained at 20 cm (Fig. 9 in Ulvestad et al. 1997, see also Heesen et al. 2009), implying that synchrotron emission is associated with the outflowing molecular gas. This suggests that magnetic fields, and possibly cosmic rays, are associated with the outflow. Cosmic rays have been suggested as an important mechanism for driving outflows in galaxies (e.g., Booth et al. 2013, Salem & Bryan 2014, Girichidis et al. 2016, Simpson et al. 2016), although observationally constraining their importance remains elusive.

To impart momentum to the cold gas, an alternative to entrainment in a hot flow is acceleration by radiation pressure. In order to explore the viability of radiation pressure to explain the observations, we perform a rough calculation. The radiation flux at a distance r along its axis from the center of a uniform-brightness disk of radius R_{src} and luminosity L_{src} is $F = L_{src}/[2\pi(R_{src}^2 + r^2)]$. Only the photons absorbed by the dusty cold gas can impart momentum, so the force due to radiation pressure experienced by a cloud that subtends a solid angle Ω and has an optical depth τ is $f_{rad} = F\Omega r^2(1 - e^{-\tau})/c$. The resulting velocity is then simply $v_{cloud}^2 = 2 \int f_{rad}/M_{cloud} dr$. For the purposes of the calculations below we will assume that the *SW streamer* is exposed to radiation from the “naked” starburst, which would be mostly far-ultraviolet and easily absorbed ($\tau \gg 1$). There is the potential for the momentum imparted by the radiation to be boosted by a factor of order τ_{IR} , the mean infrared optical depth of the streamer (e.g., Thompson et al. 2015; Zhang & Davis 2016). Given our column density estimates, the *SW streamer* does not have a large enough column to possess substantial optical depth to its own reradiated IR photons ($\tau_{IR} \sim 0.2$ for the most favorable geometry), so we assume that this boosting is unimportant.

NGC 253 has a total infrared luminosity of $L_{TIR} = 1.4 \times 10^{44} \text{ erg s}^{-1}$, about half of which originates within a diameter of ~ 200 pc from its center (Leroy et al. 2015), i.e. $R_{src} = 100$ pc. The *SW streamer* has a “minimum mass” $M_{cloud} \approx 10^6 M_{\odot}$, a projected size on the sky of $\sim 60 \times 240 \text{ pc}^2$, and a typical distance to the center of order $r \sim 100$ pc. If we assume the geometry corresponds to a cylinder 60 pc in diameter ($\Omega r^2 = \pi(30 \text{ pc})^2$) illuminated by $L_{src} = 10^{44} \text{ erg s}^{-1}$, the force due to radiation pressure applied at the base of the streamer would be $f_{rad} \sim 7.5 \times$

10^{31} dyn , resulting in an estimated acceleration of $a_{rad} \sim 4 \times 10^{-8} \text{ cm s}^{-2}$. In the absence of gravity, the resulting velocity at $r \sim 100$ pc would be $v_{cloud} \sim 60 \text{ km s}^{-1}$, lower than the observed velocity before projection correction (Fig. 4). If we instead assume that the radiation is exerting pressure on the long side of the cylinder (the geometry with the maximum area), f_{rad} would be 5 times larger, with a corresponding $v_{cloud} \sim 135 \text{ km s}^{-1}$. Note, however, that the ratio of gravity to radiation pressure for stars is $f_{grav}/f_{rad} = G\Sigma_{cloud}(4\pi c)/\Psi$, where $\psi \approx 2000 \text{ erg s}^{-1} \text{ g}$ for a fully sampled IMF containing young stars, and Σ_{cloud} is the surface density of the cloud (Ψ is the light-to-mass ratio of the stellar population, e.g., equation 33 in Kim et al. 2016). For the end-on geometry $\Sigma_{cloud} \sim 0.075 \text{ g cm}^{-2}$, while for the side-on geometry $\Sigma_{cloud} \sim 0.015 \text{ g cm}^{-2}$, resulting in $0.19 \geq f_{grav}/f_{rad} \geq 0.94$. So for our assumed geometry and mass the net acceleration $a_{net} = a_{rad}(1 - a_{grav}/a_{rad})$ is between 6% and 81% of a_{rad} , which would result in $15 \leq v_{cloud} \leq 120 \text{ km s}^{-1}$.

From the above estimates it appears that radiation can contribute maybe up to a few tens of percent of the momentum, but it is extremely unlikely to completely explain the observations. Doing so would require using the most favorable geometric assumption (maximal cloud area, which maximizes f_{rad} and minimizes f_{grav}/f_{rad}) and also assuming that there is almost no projection correction to the measured velocity (which requires a contrived geometry). This suggests that radiation pressure is not the dominant mechanism for accelerating the streamer, although it is non-negligible. Note also that any increase in the mass of the streamer over its minimum mass (see discussion in §3.6.1), or accounting for the old stars in the galaxy disk outside the starburst (which would increase gravity), would also reduce the importance of radiation pressure. Much higher resolution observations of the *SW streamer* may help further elucidate these questions, in particular which mechanisms are driving the molecular gas in the outflow.

4. SUMMARY

Our new ALMA band 3 observations (CO, and dense gas tracers) of the central starburst region of NGC 253 give new insights on the properties of the molecular outflowing gas originally discussed in Bolatto et al. (2013). The most prominent outflow feature towards the south, which is the main subject of this paper, possesses a large intrinsic velocity dispersion. Its extent and dispersion are consistent with an ejection from the disk starting about ~ 1 Myr ago.

It is currently unclear whether or not the molecular mass entrained in the outflow will escape the galaxy, or be recycled to fuel later episodes of star formation. For most of the gas in the observed outflow to escape the galaxy it would need to be accelerated as it moves away from the disk. The kinematics of the molecular gas are consistent with accelerating with a velocity gradient of $1 \text{ km s}^{-1} \text{ pc}^{-1}$, and at its last measurable point it approaches the escape velocity. As discussed, this interpretation is not unique: the kinematics could be also consistent with an outflow with a range of speeds, where the material farther from the disk is there because it is the fastest. In that scenario, only the fastest fraction of the outflowing gas may escape the galaxy. Approved, more

sensitive ALMA observations will trace the outflow even further out, and will shed light on whether or not part of the ejected molecular material will escape the galaxy.

Strikingly, tracers of the dense gas phase of the molecular medium (HCN, HCO⁺, CS, CN) are also spatially coincident with the *SW streamer* of the molecular outflow. The line ratios HCN/CO of $\sim 1/10$ measured in the outflow are high and consistent with ratios observed in the central starburst region of NGC 253 and in other starbursts. The HCN/CO line ratio in the *disk*, on the other hand, is significantly lower ($\sim 1/30$), typical of gas in the disks of nearby galaxies. In principle, this is indicative the dense molecular gas being ejected from the central regions into the outflow, while retaining its properties in this process. It also suggests that the CO(1–0) and HCN(1–0) emission are optically thick also in the streamer, implying that the estimated mass loading parameter $\eta \gtrsim 3$ (Bolatto et al. 2013) is likely a lower limit. Note that electron excitation of polar molecules is an often-ignored mechanism that could play an important role at exciting HCN, HCO⁺, and CS emission in outflows, although the fact that we see the same ratios of these transitions to CO(1–0) in the starburst and the streamer suggests similar excitation mechanisms in both regions, implying dense gas is the most likely cause. Simple calculations indicate that radiation pressure is not the main mechanism for driving the outflow. The presence of a dense gas phase in molecular outflows (with volume densities $>10^4 \text{ cm}^{-3}$ and probably $\sim 10^5 \text{ cm}^{-3}$) will have to be accounted for in numerical simulations of galactic winds, both at low and high redshift.

We thank the referee for excellent comments that improved the paper. D.S.M. acknowledges partial sup-

port by the National Science Foundation through grant AST-1009620. S.V. acknowledges NSF grant AST-1009583. A.D.B. acknowledges visiting support by the Alexander von Humboldt Foundation, and support by the National Science Foundation through a CAREER grant AST-0955836 and AST-1412419. E.C.O. is supported by the National Science Foundation through grant AST-1312006. This paper makes use of the following ALMA data: ADS/JAO.ALMA #2011.0.00172.S, #2012.1.00108.S. ALMA is a partnership of ESO (representing its member states), NSF (USA), and NINS (Japan), together with NRC (Canada), and NSC and ASIAA (Taiwan), in cooperation with the Republic of Chile. The Joint ALMA Observatory is operated by ESO, AUI/ NRAO and NAOJ. The NRAO is a facility of the National Science Foundation operated under cooperative agreement by Associated Universities, Inc. Based on observations made with the NASA/ESA *Hubble Space Telescope*, obtained from the data archive at the Space Telescope Science Institute (STScI). Some of the HST data presented in this paper in this paper were obtained from the Mikulski Archive for Space Telescopes (MAST), others were acquired under program HST-GO-13730 with support provided by NASA through a grant from the STScI. STScI is operated by the Association of Universities for Research in Astronomy, Inc., under NASA contract NAS5-26555. The Mopra radio telescope is part of the Australia Telescope National Facility which is funded by the Australian Government for operation as a National Facility managed by CSIRO. Based on observations carried out under project number 209-14 with the IRAM 30m Telescope. IRAM is supported by INSU/CNRS (France), MPG (Germany) and IGN (Spain).

REFERENCES

- Aalto, S., Garcia-Burillo, S., Muller, S., et al. 2012, *A&A*, 537, A44
- Alatalo, K., Blitz, L., Young, L. M., et al. 2011, *ApJ*, 735, 88
- Alatalo, K., Lacy, M., Lanz, L., et al. 2015, *ApJ*, 798, 31
- Bohlin, R. C., Savage, B. D., & Drake, J. F. 1978, *ApJ*, 224, 132
- Bolatto, A. D., Warren, S. R., Leroy, A. K., et al. 2013, *Nature*, 499, 450
- Booth, C. M., Agertz, O., Kravtsov, A. V., & Gnedin, N. Y. 2013, *ApJ*, 777, L16
- Brüggen, M., & Scannapieco, E. 2016, *ApJ*, 822, 31
- Bustard, C., Zweibel, E. G., & D’Onghia, E. 2016, *ApJ*, 819, 29
- Cardelli, J. A., Clayton, G. C., & Mathis, J. S. 1989, *ApJ*, 345, 245
- Cecil, G., Bland-Hawthorn, J., Veilleux, S., & Filippenko, A. V. 2001, *ApJ*, 555, 338
- Cooper, J. L., Bicknell, G. V., Sutherland, R. S., & Bland-Hawthorn, J. 2009, *ApJ*, 703, 330
- Dickinson, A. S., Phillips, T. G., Goldsmith, P. F., Percival, I. C., & Richards, D. 1977, *A&A*, 54, 645
- Engelbracht, C. W., Kundurthy, P., Gordon, K. D., et al. 2006, *ApJ*, 642, L127
- Faucher-Giguère, C.-A., & Quataert, E. 2012, *MNRAS*, 425, 605
- Faure, A., Varambha, H. N., Stoecklin, T., & Tennyson, J. 2007, *MNRAS*, 382, 840
- Flower, D. R., Pineau Des Forêts, G., & Walmsley, C. M. 2007, *A&A*, 474, 923
- Fujita, A., Martin, C. L., Mac Low, M.-M., New, K. C. B., & Weaver, R. 2009, *ApJ*, 698, 693
- Gao, Y., & Solomon, P. M. 2004, *ApJS*, 152, 63
- García-Burillo, S., Combes, F., Usero, A., et al. 2014, *A&A*, 567, A125
- Girichidis, P., Naab, T., Walch, S., et al. 2016, *ApJ*, 816, L19
- Heckman, T. M., Lehnert, M. D., Strickland, D. K., & Armus, L. 2000, *ApJS*, 129, 493
- Heesen, V., Beck, R., Krause, M., & Dettmar, R.-J. 2009, *A&A*, 494, 563
- Hlavacek-Larrondo, J., Carignan, C., Daigle, O., et al. 2011, *MNRAS*, 411, 71
- Knudsen, K. K., Walter, F., Weiss, A., et al. 2007, *ApJ*, 666, 156
- Kim, J.-G., Kim, W.-T., & Ostriker, E. C. 2016, *ApJ*, 819, 137
- Leroy, A. K., Walter, F., Martini, P., et al. 2015a, *ApJ*, 814, 83
- Leroy, A. K., Bolatto, A. D., Ostriker, E. C., et al. 2015b, *ApJ*, 801, 25
- Lindberg, J. E., Aalto, S., Muller, S., et al. 2016, *A&A*, 587, A15
- Lovell, A. J., Kallivayalil, N., Schloerb, F. P., et al. 2004, *ApJ*, 613, 615
- Nayakshin, S., & Zubovas, K. 2012, *MNRAS*, 427, 372
- Marcolini, A., Strickland, D. K., D’Ercole, A., Heckman, T. M., & Hoopes, C. G. 2005, *MNRAS*, 362, 626
- McCourt, M., O’Leary, R. M., Madigan, A.-M., & Quataert, E. 2015, *MNRAS*, 449, 2
- McCourt, M., Oh, S. P., O’Leary, R. M., & Madigan, A.-M. 2016, *ArXiv e-prints*, arXiv:1610.01164
- Meier, D. S., & Turner, J. L. 2012, *ApJ*, 755, 104
- Meier, D. S., Walter, F., Bolatto, A. D., et al. 2015, *ApJ*, 801, 63
- Müller-Sánchez, F., González-Martín, O., Fernández-Ontiveros, J. A., Acosta-Pulido, J. A., & Prieto, M. A. 2010, *ApJ*, 716, 1166
- Murray, N., Ménard, B., & Thompson, T. A. 2011, *ApJ*, 735, 66
- Osterbrock, D. E., & Ferland, G. J. 2006, *Astrophysics of gaseous nebulae and active galactic nuclei*, 2nd. ed. by D.E. Osterbrock and G.J. Ferland. Sausalito, CA: University Science Books, 2006,

- Rekola, R., Richer, M. G., McCall, M. L., et al. 2005, MNRAS, 361, 330
- Roussel, H., Wilson, C. D., Vigroux, L., et al. 2010, A&A, 518, L66
- Rupke, D. S., Veilleux, S., & Sanders, D. B. 2002, ApJ, 570, 588
- Rupke, D. S. N., & Veilleux, S. 2013, ApJ, 775, L15
- Saha, S., Ray, S., Bhattacharyya, B., & Barua, A. K. 1981, Phys. Rev. A, 23, 2926
- Sakamoto, K., Ho, P. T. P., Iono, D., et al. 2006, ApJ, 636, 685
- Salas, P., Galaz, G., Salter, D., et al. 2014, ApJ, 797, 134
- Salem, M., & Bryan, G. L. 2014, MNRAS, 437, 3312
- Scannapieco, E., & Brügggen, M. 2015, ApJ, 805, 158
- Sharp, R. G., & Bland-Hawthorn, J. 2010, ApJ, 711, 818
- Simpson, C. M., Pakmor, R., Marinacci, F., et al. 2016, arXiv:1606.02324
- Shirley, Y. L. 2015, PASP, 127, 299
- Skatrud, D.D., De Lucia, F.C., Blake, G.A., Sastry, K.V.L.N., 1983, Journal of Molecular Spectroscopy, Volume 99, Issue 1, Pages 1-243
- Stacey, G. J. 2011, IEEE Transactions on Terahertz Science and Technology, 1,
- Strickland, D. K., Heckman, T. M., Weaver, K. A., Hoopes, C. G., & Dahlem, M. 2002, ApJ, 568, 689
- Strickland, D. K., Heckman, T. M., Weaver, K. A., & Dahlem, M. 2000, AJ, 120, 2965
- Sturm, E., González-Alfonso, E., Veilleux, S., et al. 2011, ApJ, 733, L16
- Thompson, T. A., Fabian, A. C., Quataert, E., & Murray, N. 2015, MNRAS, 449, 147
- Thompson, T. A., Quataert, E., Zhang, D., & Weinberg, D. H. 2016, MNRAS, 455, 1830
- Turner, B. E. 1985, ApJ, 299, 312
- Uhlig, M., Pfrommer, C., Sharma, M., et al. 2012, MNRAS, 423, 2374
- Ulvestad, J. S., & Antonucci, R. R. J. 1997, ApJ, 488, 621
- Usero, A., Leroy, A. K., Walter, F., et al. 2015, AJ, 150, 115
- Veilleux, S., Cecil, G., Bland-Hawthorn, J., et al. 1994, ApJ, 433, 48
- Veilleux, S., Cecil, G., & Bland-Hawthorn, J. 2005, ARA&A, 43, 769
- Veilleux, S., Rupke, D. S. N., & Swaters, R. 2009, ApJ, 700, L149
- Veilleux, S., Meléndez, M., Sturm, E., et al. 2013, ApJ, 776, 27
- Walter, F., Weiss, A., & Scoville, N. 2002, ApJ, 580, L21
- Watson, A. M., Gallagher, J. S., III, Holtzman, J. A., et al. 1996, AJ, 112, 534
- Westmoquette, M. S., Smith, L. J., & Gallagher, J. S., III 2011, MNRAS, 414, 3719
- Zhang, D., & Davis, S. W. 2016, ApJ, submitted (arXiv:1612.00022)
- Zubovas, K., & King, A. 2012, ApJ, 745, L34