

ARTICLE

Received 24 Oct 2016 | Accepted 6 Feb 2017 | Published 23 Mar 2017

DOI: 10.1038/ncomms14869

OPEN

Single-mode dispersive waves and soliton microcomb dynamics

Xu Yi^{1,*}, Qi-Fan Yang^{1,*}, Xueyue Zhang^{1,2,*}, Ki Youl Yang¹, Xinbai Li^{1,3} & Kerry Vahala¹

Dissipative Kerr solitons are self-sustaining optical wavepackets in resonators. They use the Kerr nonlinearity to both compensate dispersion and offset optical loss. Besides providing insights into nonlinear resonator physics, they can be applied in frequency metrology, precision clocks, and spectroscopy. Like other optical solitons, the dissipative Kerr soliton can radiate power as a dispersive wave through a process that is the optical analogue of Cherenkov radiation. Dispersive waves typically consist of an ensemble of optical modes. Here, a limiting case is studied in which the dispersive wave is concentrated into a single cavity mode. In this limit, its interaction with the soliton induces hysteresis behaviour in the soliton's spectral and temporal properties. Also, an operating point of enhanced repetition-rate stability occurs through balance of dispersive-wave recoil and Raman-induced soliton-self-frequency shift. The single-mode dispersive wave can therefore provide quiet states of soliton comb operation useful in many applications.

¹T.J. Watson Laboratory of Applied Physics, California Institute of Technology, Pasadena, California 91125, USA. ²Department of Microelectronics and Nanoelectronics, Tsinghua University, Beijing 100084, China. ³State Key Laboratory of Advanced Optical Communication Systems and Networks, School of Electronics Engineering and Computer Science, Peking University, Beijing 100871, China. * These authors contributed equally to this work. Correspondence and requests for materials should be addressed to K.V. (email: vahala@caltech.edu).

A new dissipative soliton¹ has recently been observed in optical resonators. These dissipative Kerr solitons (DKS) have been demonstrated in fibre resonators² and in various microcavity systems^{3–7}. In microcomb research^{8,9} soliton formation produces phase-locked spectra with reproducible envelopes, as required in frequency comb applications^{10–14}. Moreover, their unusual properties and interactions create a rich landscape for research in nonlinear optical phenomena^{5,15–24}. Two such phenomena, the Raman-induced soliton-self-frequency-shift (SSFS) and dispersive-wave generation, are important to this work.

The Raman SSFS causes a spectral red shift of the soliton. In optical fibre systems, this shift continuously increases with propagation distance^{25,26}, however, in microresonators the shift is fixed and depends upon soliton power^{17,18,27,28}. Dispersive waves also occur in optical fibre systems²⁹ where they are an important process in continuum generation³⁰ and have been used to study general nonlinear phenomena³¹. They are formed when a soliton radiates into a spectral region of normal dispersion and can be understood as the optical analog of Cherenkov radiation³². In microcavities, dispersive waves provide a powerful way to spectrally broaden a soliton within a microresonator as a precursor to self referencing^{12,33}. Their formation also induces soliton recoil³² which, similar to SSFS, causes a frequency shift in the spectral centre of the soliton^{5,17}. Dispersive waves normally consist of an ensemble of modes that are phase matched to a soliton. This phase matching can be assisted by avoided mode crossings in microcavities^{19,34}. Avoided mode crossings can also produce zero group velocity effects^{35,36}, enable microcombs to form in regions of normal dispersion³⁷, and provide a way to induce dark solitons¹⁶.

In this work, an avoided-mode crossing is used to excite a dispersive wave consisting of a single cavity mode. The coupling of this single-mode dispersive wave to the soliton is strongly influenced by the total soliton frequency shift produced by the combined Raman-induced SSFS and the dispersive-wave recoil. The combination is shown to induce hysteresis behaviour in soliton properties. Included in this behaviour, there is an operating point of improved pulse-rate stability (a quiet point) where the coupling of repetition rate and cavity-pump detuning is greatly reduced. Pulse-rate stability is centrally important in many frequency comb applications^{10,13,38}. Coupling of pulse rate and cavity-pump detuning through avoided-mode-crossing recoil effects has been observed in crystalline resonators³⁹. Also, the fundamental contributions to phase noise in the pulse train have been considered theoretically⁴⁰. However, technical noise mechanisms are also present. For example, DKS generation using on-chip silica resonators exhibits phase noise that tracks in spectral profile the phase noise of the optical pump⁴. The quiet operation point is shown to reduce technical noise contributions to the soliton pulse repetition rate. Both this regime of operation and the hysteresis behaviour are measured and modelled theoretically.

Results

Mode family dispersion. A silica whispering-gallery resonator⁴¹ is used for soliton generation. The devices feature a free-spectral-range (FSR) of ~ 22 GHz (3 mm diameter resonator) and have intrinsic Q-factors around 250 million. Specific details on soliton formation in these resonators are given elsewhere^{4,42}. The resonators support multiple, transverse mode families. It is essential that the soliton-forming mode family feature dispersion that is primarily second-order and anomalous⁴³. To characterize the frequency spectrum of the resonator, mode frequencies were measured from 190.95 THz (1,570 nm) to 195.94 THz (1,530 nm)

using an external-cavity diode laser calibrated by a fibre Mach-Zehnder interferometer⁴. This provides a set of mode frequencies $\{\omega_{\mu,s}\}$ for each spatial mode family ‘s’ with μ as the mode index.

The mode family frequency data are presented in Fig. 1a by plotting the relative-mode-frequency, $\Delta\omega_{\mu,s} \equiv \omega_{\mu,s} - \omega_0 - \mu D_1$ versus mode index μ where ω_0 and D_1 are specific to the soliton-forming mode family. ω_0 is the frequency of the mode (set to have index $\mu = 0$) that is optically pumped to produce the soliton, and D_1 is the FSR of the soliton-forming mode family at $\mu = 0$ (note: μ is a relative and not an absolute mode index). By plotting the data in this way the second- and higher-order dispersion of the soliton-forming mode family become manifest. To illustrate, the relative-mode-frequency of the soliton-mode family is fit with a green, dashed parabolic curve of positive curvature in Fig. 1a showing that it features anomalous second-order dispersion over a wide range of mode numbers.

A second mode family also appears in Fig. 1a and causes an avoided-mode-crossing near $\mu = 72$. Hybridization of this ‘crossing-mode’ family with the soliton-mode family occurs near the avoided crossing^{19,44}. The relative-mode-frequencies of the unperturbed soliton-forming mode family and crossing-mode family are denoted as $\Delta\omega_{\mu A}$ and $\Delta\omega_{\mu B}$. Over the range of mode indices measured $\Delta\omega_{\mu A} = \frac{1}{2}D_2\mu^2$ where D_2 is the second-order dispersion at $\mu = 0$. The lower (upper) branch of the hybrid mode family is denoted by $\Delta\omega_{\mu-}$ ($\Delta\omega_{\mu+}$). The spatial modes associated with the soliton and crossing mode families are identified in the Supplementary Note 3. Avoided mode crossing behaviour has been intensively studied in the context of DKS formation and can interfere with soliton generation by creation of distortions in the dispersion spectrum^{43,45,46}. In the present system, the avoided mode-crossing induces only minimal distortion in the otherwise parabolic shape of the soliton-forming mode family. Soliton spectra produced on this mode family by pumping at $\mu = 0$ are shown in Fig. 1b along with theoretical sech^2 spectral envelopes predicted for DKSs. As an aside, the horizontal scales in Fig. 1a,b are identical and the location of the $\mu = 0$ pumping mode is indicated by a vertical dashed line in Fig. 1b.

Single-mode dispersive-wave formation. Also shown in Fig. 1a are the comb frequencies associated with a hypothetical soliton spectrum plotted in the relative frequency frame. This comb line is given by,

$$\Delta\omega_{\mu,\text{comb}} = \omega_{\mu,\text{comb}} - \omega_0 - D_1\mu = (\omega_{\text{rep}} - D_1)\mu - \delta\omega, \quad (1)$$

where $\omega_{\mu,\text{comb}} = \mu\omega_{\text{rep}} + \omega_p$ is the frequency of μ th comb line, ω_{rep} is the soliton repetition frequency, ω_p is the pump frequency, and $\delta\omega \equiv \omega_0 - \omega_p$ is the cavity-pump detuning frequency. It is necessary to distinguish between relative frequencies for the soliton comb and the resonator modes because the frequency components of the soliton comb are strongly red-detuned relative to the cold-cavity mode frequencies by the Kerr nonlinearity. Indeed, dispersive waves typically form when a set of modes break this rule and become resonant with a set of comb lines. A limiting case of this condition is shown in Fig. 1a, where the occurrence of an isolated resonance between a hybrid mode with relative frequency $\Delta\omega_{r-}$ and a comb line at $\Delta\omega_{r,\text{comb}}$ is illustrated. The equation of motion for the hybrid mode field amplitude h_{r-} is shown in the Methods to have the following form,

$$\frac{dh_{r-}}{dt} = \left[-i\Delta\omega_{r-} - \frac{\kappa_{r-}}{2} \right] h_{r-} + f_r e^{-i\Delta\omega_{r,\text{comb}}t} \quad (2)$$

where κ_{r-} is its loss rate and f_r is an effective pumping term associated with the soliton comb line. The pumping term is given by $f_r = i\Gamma(\Delta\omega_{rA} - \Delta\omega_{r,\text{comb}})a_r$ where Γ is the fraction of the family

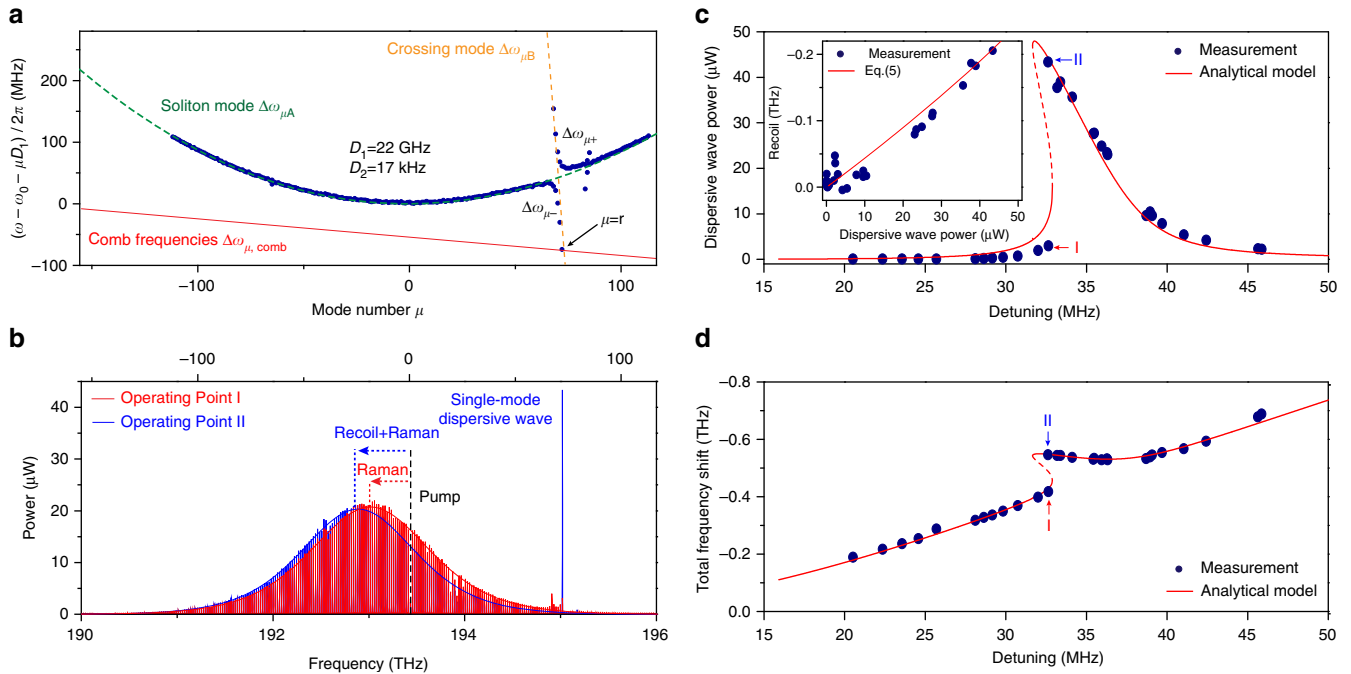


Figure 1 | Soliton hysteretic behaviour induced by mode interaction. (a) Measured relative mode frequencies are shown as blue points⁴. The green and yellow dashed lines represent the fitted relative mode frequencies ($\Delta\omega_{\mu A}$ and $\Delta\omega_{\mu B}$) of the unperturbed soliton-forming mode family A and crossing mode family B, respectively. Relative mode frequencies for upper and lower branch hybrid-modes are $\Delta\omega_{\mu+}$ and $\Delta\omega_{\mu-}$. The red line illustrates the frequencies of a hypothetical soliton frequency comb. A non-zero slope on this line arises from the repetition rate change relative to the FSR at mode $\mu = 0$. (b) Measured optical spectra at soliton operating points I and II, corresponding to closely matched cavity-pump detuning frequencies, $\delta\omega$. A strong single-mode dispersive wave at $\mu = 72$ is observed for operating point II and causes a soliton recoil frequency shift. This frequency shift adds to the shift resulting from the Raman-induced SSFS. (c,d) Dispersive-wave power and soliton spectral centre frequency shift versus cavity-pump detuning. Operating points I and II of b are indicated. Inset in c: Measured (blue dots) and theoretical (red line) recoil frequency versus the dispersive wave power.

A mode in the hybrid mode, and a_r is the field amplitude of the unperturbed soliton hyperbolic solution at $\mu = r$. Also, the Kerr-effect shift of h_{r-} is of order 10 kHz and is therefore negligible in comparison to κ_{r-} .

Because the damping rate κ_{r-} is low (that is, the mode has a high optical Q-factor) slight shifts in the slope of the comb frequency line (equivalently, shifts of $\Delta\omega_{r,comb}$ relative to $\Delta\omega_{r-}$) will cause large changes in the power coupled to the hybrid mode. These changes are observable in Fig. 1b where a strong spectral line appears in the case of the blue soliton spectrum. Note that scattering from the soliton into the spectral line is strong enough so that the power in the line is greater than the comb line power near the spectral centre of the soliton, itself. The strong spectral line can be understood as a single-mode dispersive wave and it induces a recoil in the spectral centre of the soliton. This recoil contribution is indicated for the blue soliton spectrum in the figure. In the case of the red soliton spectrum, the operating point was changed and the resonance between the soliton and the mode is diminished. Accordingly, most of the spectral shift in this case results from the Raman SSFS.

Soliton recoil and hysteresis. A change in the slope of the soliton comb line will occur when the soliton repetition frequency, ω_{rep} , is changed (equation (1)). On account of second-order dispersion ω_{rep} depends linearly on the frequency offset, Ω , of the soliton spectral maximum relative to the pump frequency^{19,40}. This frequency offset has contributions from both the Raman SSFS, Ω_{Raman} , and the dispersive-wave recoil, Ω_{Recoil} (that is, $\Omega = \Omega_{Raman} + \Omega_{Recoil}$). Accordingly, the soliton repetition

rate is given by,

$$\omega_{rep} = D_1 + \frac{D_2}{D_1} (\Omega_{Raman} + \Omega_{Recoil}) \quad (3)$$

where D_2 (the second-order dispersion of soliton-forming mode family at $\mu = 0$) is measured to be 17 kHz from Fig. 1a. Substituting for the repetition rate in the comb line expression (equation (1)) gives,

$$\Delta\omega_{\mu,comb} = \frac{\mu D_2}{D_1} (\Omega_{Raman} + \Omega_{Recoil}) - \delta\omega \quad (4)$$

It is shown in the Methods (equation (25)) that the soliton recoil frequency has a linear dependence on the hybrid mode power,

$$\Omega_{Recoil} = \gamma |h_{r-}|^2 = -r \frac{\kappa_B D_1}{\kappa_A E} |h_{r-}|^2 \quad (5)$$

where κ_A and κ_B denote the power loss rates of the family A and family B modes, respectively; and E is the circulating soliton energy.

Solving equation (2) for the steady-state power in the hybrid mode at the soliton comb line frequency and using equations (4) and (5) gives the following result,

$$|h_{r-}|^2 = \frac{|f_r|^2}{\left(\Delta\omega_{r-} + \delta\omega - \frac{r D_2}{D_1} [\Omega_{Raman} + \gamma |h_{r-}|^2] \right)^2 + \frac{\kappa_{r-}^2}{4}} \quad (6)$$

Equation (6) suggests that a bistable state and hysteresis behaviour in the dispersive-wave power is possible when varying the soliton operating point. Consistent with this possibility, it is noted that the two soliton spectra in Fig. 1b (blue and red), which show very different dispersive-wave powers, were produced at

nearly identical detuning frequencies, $\delta\omega$. A more detailed survey of the dispersive-wave power behaviour is provided in Fig. 1c and is again consistent with a hysteresis behaviour versus detuning. Moreover, since the total spectral shift of the soliton is given by $\Omega = \Omega_{\text{Raman}} + \Omega_{\text{Recoil}} = \Omega_{\text{Raman}} + \gamma|h_{r-}|^2$, a corresponding behaviour is observed in the overall soliton spectral shift (Fig. 1d). Theoretical fits are provided in Fig. 1c,d using equation (6). The fitting procedure and parameter values are provided in the Methods.

In plotting the data, the detuning frequency, $\delta\omega/2\pi$, was determined from the measured total soliton spectral shift (Ω) and pulse width (τ_s) using the relation $\delta\omega = (D_2/2D_1^2)(1/\tau_s^2 + \Omega^2)$. This expression is a generalization of a relationship derived elsewhere¹⁸. The generalization extends the shift Ω to include both the SSFS and the recoil and is derived as equation (33) in the Methods. As an aside, the pulse width is determined by fitting the soliton optical spectrum⁴.

Likewise, the recoil frequency, Ω_{Recoil} , can also be extracted from the data as $\Omega - \Omega_{\text{Raman}}$ by first using the soliton pulse width to determine the Raman shift using $\Omega_{\text{Raman}} = -8\tau_R D_2/15\kappa_A D_1^2 \tau_s^4$. A plot of the recoil shift determined this way versus the dispersive-wave power is given as the inset in Fig. 1c and verifies the linear dependence (equation (5)). Equation (5) is also plotted for comparison using parameters given in the Methods. As an aside, the Raman shift formula noted above is also a generalization of a result proven elsewhere¹⁸. Curiously, as shown in the Methods, this formula maintains its previous form in the presence of the dispersive wave.

Within narrow detuning frequency bands in the vicinity of the hysteresis both measurements and calculations show that the total cavity power (soliton and dispersive-wave contributions) can decrease with increasing cavity-pump detuning as opposed to increasing with detuning as is typical for a soliton. Under these special conditions, the pump-cavity detuning will no longer be dynamically stable on account of the thermal nonlinearity⁴⁷. Evidence of this was observable in the current work as it was not possible to completely map out the theoretically predicted hysteresis curves.

While the present results are produced using a dispersive wave that is blue-detuned relative to the soliton spectral maximum, the hysteresis behaviour is also predicted to occur for a red-detuned dispersive wave. However, in the red-detuned case, the orientation of the curve in Fig. 1c is reversed with respect to the detuning frequency. The essential feature for appearance of the hysteresis is that the recoil advances and retreats versus detuning. As a result, the existence of hysteresis behaviour predicted in equation (6) is not limited to microresonator materials having a strong Raman SSFS. It is also predicted to occur, for example, in crystalline resonators given an appropriate avoided-mode crossing. The requirements imposed on the device and mode crossing for this to occur are discussed further below.

Numerical simulation. To further investigate the single-mode dispersive-wave phenomena, we perform numerical simulations based on the coupled Lugiato-Lefever equations^{34,48–51} involving the soliton-forming mode family (family A) and the crossing-mode family (family B). Additional information including parameter values is provided in the Methods, but is outlined here. The two mode families are coupled using a model studied elsewhere¹⁹. The coupling is characterized by a rate constant G and is designed to induce an avoided-mode-crossing around mode index $\mu=72$, similar to the experimental mode family dispersion. Figure 2 shows the results of the numerical simulation including 2,048 modes. The hysteresis behaviour in the soliton total frequency shift and the dispersive-wave power resembles the

experimental observation and is also in agreement with the analytical model (Fig. 2a,b). As predicted by equation (5) (and observed in the Fig. 1c, inset), the recoil is numerically predicted to vary linearly with the dispersive-wave power (Fig. 2b, inset).

Frequency and time domain features of the soliton (blue) and dispersive wave (red) are also studied in Fig. 2c,d in units of intracavity power. They show that the dispersive-wave emerges on mode family B and consists primarily of a single mode. The single-mode dispersive wave leads to a modulated background field in the resonator with a period determined by the beating between the pump and the dispersive wave. This modulation is observable in Fig. 2d. Spectral recoil of the soliton is also observable in the numerical spectra. The combined power of mode A and B spectra in Fig. 2c is the total intracavity power.

Soliton repetition rate quiet point. The nonlinear behaviour associated with soliton coupling to the single-mode dispersive wave can be used to suppress soliton repetition rate noise produced by coupling of pump-laser frequency noise. This noise source is suspected to be a significant contributor to repetition-rate noise in certain frequency-offset regimes⁴. From equation (3) the repetition frequency depends linearly on the total soliton spectral-centre frequency shift, Ω . However, this total shift frequency versus cavity-pump detuning has a stationary point on the upper hysteresis branch (Fig. 1d). As expected from the simple dependence in equation (3), this same stationary point is observed in measurements of the repetition frequency versus detuning (Fig. 3a). To measure the repetition frequency the soliton pulse train is directly detected and an electrical spectrum analyser is used to observe the pulse train spectrum. The theoretical prediction using analysis from the Methods is also provided for comparison.

The coupling of pump-laser frequency noise into the soliton repetition rate is expected to be minimal at the stationary point. To verify this prediction, the phase noise of the detected soliton pulse train is measured at different soliton operating points on the upper and lower branches in Fig. 3a using a phase noise analyser. Phase noise spectra corresponding to operating points I, II and III in Fig. 3a are plotted in Fig. 3b. Operating points I and II correspond to nearly identical cavity-pump detuning, but lie on different branches. As expected, operating point II in the upper branch has a lower phase noise level compared to operating point I on account of its reduced slope. Operating point III is close to the zero-slope detuning point in the upper branch. This quiet point has the lowest phase noise among the recorded phase noise spectra. At higher offset frequencies, the phase noise is shot noise limited, while at lower offset frequencies the phase noise indicates >0 dBc Hz⁻¹ and is mainly contributed by frequency drift of the repetition rate.

For comparison, the phase noise associated with the detuning frequency $\delta\omega$ was also measured. For this measurement, the error signal of a Pound–Drever–Hall feedback control system is operated open-loop and recorded using an oscilloscope. Its power spectral density is converted into phase noise in Fig. 3b (Supplementary Note 1). The relatively high noise floor in this measurement is caused by the oscilloscope sensitivity. Nonetheless, a noise bump at 25 kHz offset frequency originates from the laser and provides a laser-noise reference point against which comparison to the soliton phase noise is possible. The soliton phase noise at 25 kHz offset frequency noise is plotted versus detuning in Fig. 3c. The soliton phase noise is calculated in the Methods and the results are presented for comparison using the cavity-pump detuning noise level at 25 kHz offset. The dip of the phase noise occurs at the quiet point. One outlier point (red branch) is believed to have resulted from loss of lock of the phase

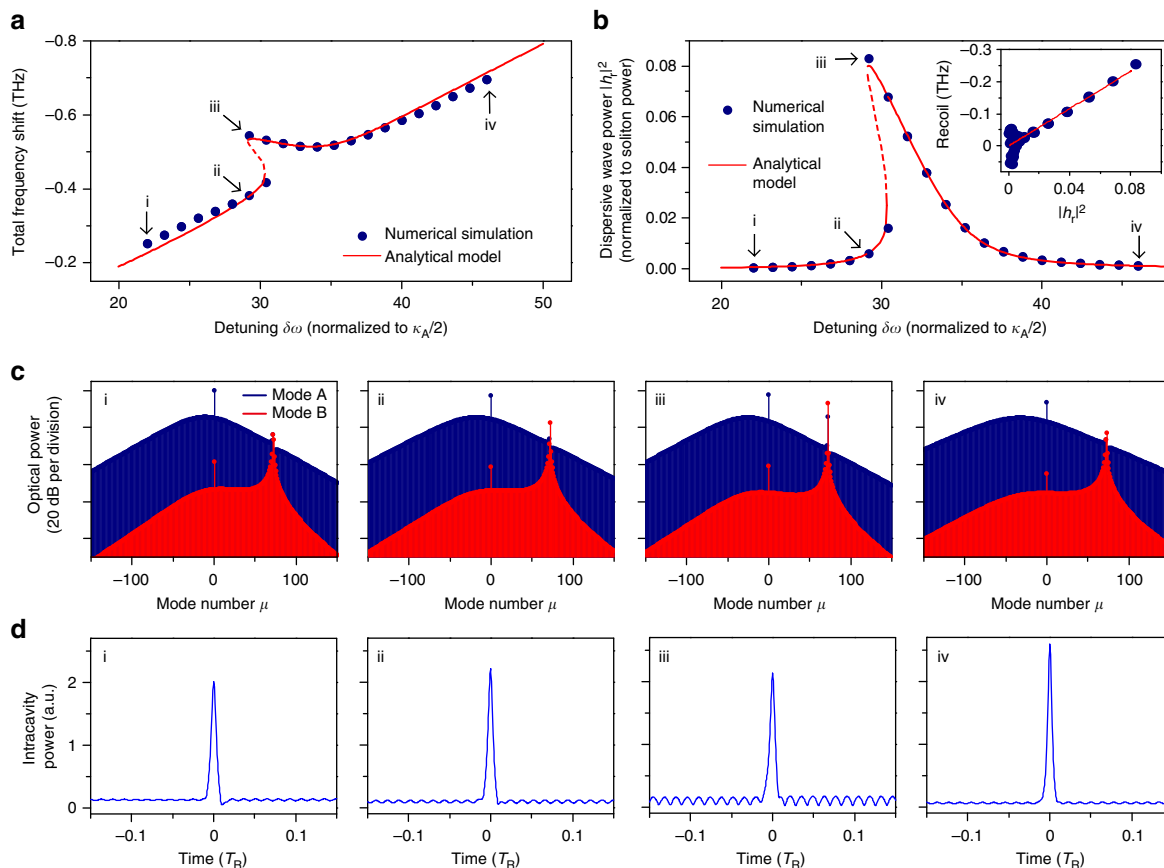


Figure 2 | Numerical simulation and analytical model of single-mode dispersive-wave generation and recoil. (a) Numerical (blue dots) and analytical (red solid line) soliton total frequency shift versus cavity-pump detuning. Points i, ii, iii and iv correspond to specific soliton operating points noted in other figure panels. (b) Numerical (blue dots) and analytical (red solid line) dispersive-wave power (normalized to total soliton power) versus cavity-pump detuning. Inset: recoil frequency versus the dispersive-wave power. (c) Comb spectra contributions from the two mode families (blue: soliton forming mode family A; red: crossing mode family B). (d) Time domain intracavity power. T_R is the cavity round trip time.

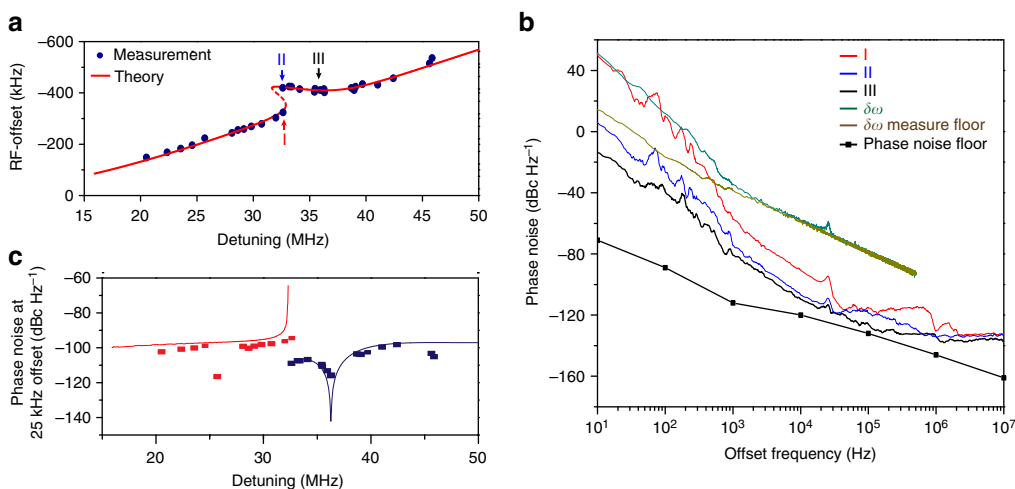


Figure 3 | Soliton repetition frequency and phase noise measurement. (a) Measured (blue dots) and theoretical (red) soliton repetition frequency versus pump-cavity detuning. The offset frequency is 22.0167 GHz. The distinct soliton operating points I, II and III refer to phase noise measurements in 3b. Point III is near the quiet operation point. (b) Phase noise spectra of detected soliton pulse stream at three operating points shown in 3a and also the noise of the cavity-pump detuning (green) with its noise floor (brown). The black line connecting the square dots is the measurement floor of the phase noise analyser. (c) Phase noise of soliton repetition rates at 25 kHz offset frequency plotted versus the cavity-pump detuning. The blue and red dots (lines) denote the experimental (theoretical) phase noise of the upper (blue) and lower (red) branch operating points, respectively.

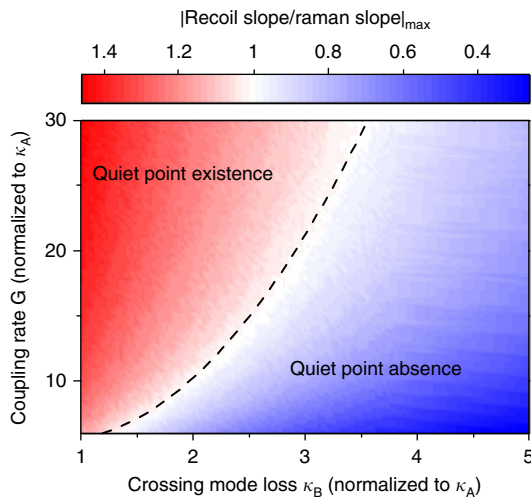


Figure 4 | Existence study for the quiet point. The maximum ratios of $|\partial\Omega_{\text{Recoil}}/\partial\delta\omega|$ to $|\partial\Omega_{\text{Raman}}/\partial\delta\omega|$ at varying normalized modal-coupling rate G (see Methods) and normalized crossing-mode damping rate κ_B (dashed curve is unity ratio). The quiet point exists when this ratio is greater than unity (red region). Parameters correspond to a silica resonator.

noise analyser. For lower offset frequencies, the contributions to noise are believed to originate from thermal contributions within the resonator and are under investigation. Nonetheless, the measured noise contributions at these frequencies show a trend of reduction for operation at the quiet point.

An analytical study comparing the detuning response of the Raman and recoil effects was performed to determine conditions required to observe the quiet point. The quiet point occurs when the retreating soliton recoil balances the always advancing SSFS. Accordingly, Fig. 4 is a contour plot of the maximum ratio of $|\partial\Omega_{\text{Recoil}}/\partial\delta\omega|$ to $|\partial\Omega_{\text{Raman}}/\partial\delta\omega|$ while varying the coupling strength between the soliton-mode and crossing-mode families and the damping rate of the crossing mode (see Methods). The existence regime for observation of the quiet point corresponds to the ratio > 1 shown in red. Stronger mode interaction and weaker dissipation are required to operate in this regime. Also, the impact of these parameters on the detuning range of the hysteresis is studied in the Supplementary Note 4.

Discussion

Microfabrication control of resonator diameter, oxide thickness and wedge angle all impact the spectral placement of mode families. Numerical simulation of these families based on scanning electron micrograph measurement of resonator cross sections provides reasonably accurate dispersion maps for prediction of resonator properties. Also, process control of the resonator fabrication is sufficient to guarantee fabrication of mode families exhibiting the features shown in Fig. 1a within the 1,530–1,570 nm band.

In summary, coupling of a dissipative Kerr soliton to a single-mode dispersive wave has been shown to produce hysteresis behaviour in both the dispersive-wave power and in the soliton properties. These properties include the frequency shift of the soliton spectral centre relative to the pumping frequency and the soliton repetition frequency. The hysteresis results from the dependence of the dispersive-wave phase matching condition upon the dispersive-wave power. The hysteresis behaviour of the dispersive wave also leads to an operating point wherein coupling of laser pump frequency noise into the soliton repetition rate is greatly reduced. This reduction was modelled and measured, and

the requirements for quiet point existence were also studied. The operating point for quiet soliton operation is of potential use for ultra-low-noise microwave generation.

Methods

Dynamical equation of hybrid mode. Equation (2) can be derived from coupled mode equations that include dispersion, mode interaction and the Kerr non-linearity. The intracavity field of mode μ in the soliton-forming mode family A can be represented by $A_\mu(t)e^{-i\omega_\mu t + i\mu\phi}$, where $A_\mu(t)$ is the slowly varying amplitude, t is the time and ϕ is the azimuthal angle along the resonator. In the rotation frame of comb frequencies $\omega_{\mu,\text{comb}} = \omega_0 - \delta\omega + \mu\omega_{\text{rep}}$, the intracavity field can be expressed as $a_\mu(t) = A_\mu(t)e^{-i(\omega_{\mu A} - \omega_0 + \delta\omega - \mu\omega_{\text{rep}})t}$. We denote the intracavity field in the crossing-mode family B as b_μ and express it in the same reference frame as the soliton-forming mode a_μ . It should be noted that the relative mode number μ is referenced to the mode that is being optically pumped, and does not represent the actual azimuthal index. The intracavity fields can be calculated using the equations of motion with Kerr nonlinearity terms^{50,52} and modal-coupling terms⁴⁴,

$$\frac{da_\mu}{dt} = - \left[\frac{\kappa_A}{2} + i(\omega_{\mu A} - \omega_0 + \delta\omega - \mu\omega_{\text{rep}}) \right] a_\mu + iGb_\mu + ig \sum_{j,k} a_j a_k a_{j+k-\mu}^* + F\delta(\mu) \quad (7)$$

$$\frac{db_\mu}{dt} = - \left[\frac{\kappa_B}{2} + i(\omega_{\mu B} - \omega_0 + \delta\omega - \mu\omega_{\text{rep}}) \right] b_\mu + iGa_\mu + ig_B \sum_{j,k} b_j b_k b_{j+k-\mu}^* \quad (8)$$

where $\kappa_{A,B} = \omega_0/Q_{A,B}$ is the dissipation rate. $g = \hbar\omega_0^2 n_2 D_1 / 2\pi n_0 A_{\text{eff}}$ represents the normalized Kerr nonlinear coefficient with A_{eff} the effective nonlinear mode area. g_B is defined similarly. G is the linear coupling coefficient between the two mode families¹⁹ and F is the normalized coupled laser pump field. Also, to calculate equation (2) it is not necessary to include Raman coupling terms in equations (7 and 8) since the leading-order contribution to the forcing term, f_r , is from the Kerr nonlinearity.

Modal coupling causes two branches of hybrid modes to form as shown in Fig. 1a. The frequencies of the hybrid modes in the upper (+) and lower (−) branches are given by (refs 44,53,54),

$$\omega_{\mu\pm} = \frac{\omega_{\mu A} + \omega_{\mu B}}{2} \pm \sqrt{G^2 + \frac{1}{4}(\omega_{\mu A} - \omega_{\mu B})^2} \quad (9)$$

where the corresponding field amplitude of the hybrid modes is a linear combination of a_μ and b_μ . In the far-detuned regime where $\omega_{\mu A} - \omega_{\mu B} \gg G$, the field amplitude of the lower branch hybrid mode is approximately given by,

$$\tilde{h}_{\mu-} = \frac{Ga_\mu + (\omega_{\mu A} - \omega_{\mu B})b_\mu}{\sqrt{G^2 + (\omega_{\mu A} - \omega_{\mu B})^2}} \quad (10)$$

In this experiment, only one mode was observed to be near resonance with the soliton comb and that mode is assigned mode index $\mu = r$. Consistent with Fig. 1a, the hybridization of mode r is assumed weak (that is, $|\omega_{rA} - \omega_{rB}| \gg |G|$ and $|\Delta\omega_{rA}| \gg |\Delta\omega_{rB}|$) so that b_r is the dominant contribution to \tilde{h}_{r-} . Also, since the amplitude of b_μ with $\mu \neq r$ is small, the Kerr interaction summation term can be neglected in equation (8) in this calculation.

By taking the time derivative of equation (10) and then substituting using (7) and (8) the following dynamical equation results for $\tilde{h}_{\mu-}$,

$$\frac{d\tilde{h}_{r-}}{dt} = - \left[\frac{\kappa_{r-}}{2} + i(\omega_{r-} - \omega_0 + \delta\omega - r\omega_{\text{rep}}) \right] \tilde{h}_{r-} + f_r \quad (11)$$

where f_r is the pumping term given by,

$$f_r = i\Gamma g \sum_{j,k} a_j a_k a_{j+k-r}^* \quad (12)$$

and where $\Gamma = G/\sqrt{|G|^2 + |\omega_{\mu A} - \omega_{\mu B}|^2}$ is the fraction of the family A mode in $\tilde{h}_{\mu-}$ and $\kappa_{r-} \approx \kappa_B$ is assumed for r when $\Gamma \ll 1$. When converting equation (11) into the rotation frame of $(\omega_0 + \mu D_1)$ with $\tilde{h}_{r-} = h_{r-} e^{i\Delta\omega_r \text{comb} t}$, the following expression results,

$$\frac{dh_{r-}}{dt} = \left[-i\Delta\omega_{r-} - \frac{\kappa_{r-}}{2} \right] h_{r-} + f_r e^{-i\Delta\omega_r \text{comb} t} \quad (13)$$

where $\Delta\omega_{r-} = \omega_{r-} - \omega_0 - \mu D_1$ is the relative-mode-frequency of hybrid mode h_{r-} . Equation (13) is identical to equation (2) in the main text.

Effective pumping term. The pumping term in equation (11) can be expressed in parameters of the resonator and soliton. The soliton field envelope takes the form^{3,18}

$$A(\phi, t) = B_s \text{sech}[(\phi - \phi_c)/D_1 \tau_s] e^{i\Omega(\phi - \phi_c)/D_1 + i\varphi} \quad (14)$$

43. Herr, T. *et al.* Mode spectrum and temporal soliton formation in optical microresonators. *Phys. Rev. Lett.* **113**, 123901 (2014).
44. Liu, Y. *et al.* Investigation of mode coupling in normal-dispersion silicon nitride microresonators for Kerr frequency comb generation. *Optica* **1**, 137–144 (2014).
45. Ramelow, S. *et al.* Strong polarization mode coupling in microresonators. *Opt. Lett.* **39**, 5134–5137 (2014).
46. Huang, S.-W. *et al.* Smooth and at phase-locked Kerr frequency comb generation by higher order mode suppression. *Sci. Rep.* **6**, 26255 (2016).
47. Carmon, T., Yang, L. & Vahala, K. Dynamical thermal behavior and thermal self-stability of microcavities. *Opt. Express* **12**, 4742–4750 (2004).
48. Lugiato, L. A. & Lefever, R. Spatial dissipative structures in passive optical systems. *Phys. Rev. Lett.* **58**, 2209 (1987).
49. Matsko, A. *et al.* Mode-locked Kerr frequency combs. *Opt. Lett.* **36**, 2845–2847 (2011).
50. Chembo, Y. K. & Menyuk, C. R. Spatiotemporal lugiato-lefever formalism for Kerr-comb generation in whispering-gallery-mode resonators. *Phys. Rev. A* **87**, 053852 (2013).
51. D’Aguanno, G. & Menyuk, C. R. Nonlinear mode coupling in whispering-gallery-mode resonators. *Phys. Rev. A* **93**, 043820 (2016).
52. Herr, T. *et al.* Universal formation dynamics and noise of Kerr-frequency combs in microresonators. *Nat. Photon.* **6**, 480–487 (2012).
53. Haus, H. A. & Huang, W. P. Coupled-mode theory. *Proc. IEEE* **79**, 1505–1518 (1991).
54. Wiersig, J. Formation of long-lived, scarlike modes near avoided resonance crossings in optical microcavities. *Phys. Rev. Lett.* **97**, 253901 (2006).
55. Santhanam, J. & Agrawal, G. P. Raman-induced spectral shifts in optical fibers: general theory based on the moment method. *Opt. Commun.* **222**, 413–420 (2003).
56. Agrawal, G. P. *Nonlinear Fiber Optics* (Academic press, 2007).

Acknowledgements

We gratefully acknowledge the Defense Advanced Research Projects Agency under the QuASAR and PULSE programs, and the Kavli Nanoscience Institute. Xueyue Zhang

gratefully thanks the Caltech SURF program and the Tsinghua University Top Open Program, Spark Program and Initiative Scientific Research Program (No. 20161080166).

Author contributions

Experiments were designed by all authors. X.Y. and Q.-F.Y. performed the measurements. X.Y., Q.-F.Y., X. Z., X.L. performed modelling. K.Y.Y. fabricated devices. Analysis of results was conducted by all authors. All authors participated in preparing the manuscript.

Additional information

Supplementary Information accompanies this paper at <http://www.nature.com/naturecommunications>

Competing interests: The authors declare no competing financial interests.

Reprints and permission information is available online at <http://npg.nature.com/reprintsandpermissions/>

How to cite this article: Yi, X. *et al.* Single-mode dispersive waves and soliton microcomb dynamics. *Nat. Commun.* **8**, 14869 doi: 10.1038/ncomms14869 (2017).

Publisher’s note: Springer Nature remains neutral with regard to jurisdictional claims in published maps and institutional affiliations.



This work is licensed under a Creative Commons Attribution 4.0 International License. The images or other third party material in this article are included in the article’s Creative Commons license, unless indicated otherwise in the credit line; if the material is not included under the Creative Commons license, users will need to obtain permission from the license holder to reproduce the material. To view a copy of this license, visit <http://creativecommons.org/licenses/by/4.0/>

© The Author(s) 2017