



ON THE COMMONALITY OF 10–30 AU SIZED AXISYMMETRIC DUST STRUCTURES IN PROTOPLANETARY DISKS

KE ZHANG¹, EDWIN A. BERGIN¹, GEOFFREY A. BLAKE², L. ILSEDORE CLEEVES³,
MICHIEL HOGERHEIJDE⁴, VACHAIL SALINAS⁴, AND KAMBER R. SCHWARZ¹

¹Department of Astronomy, University of Michigan, 1085 S. University Avenue, Ann Arbor, MI 48109, USA; kezhang@umich.edu

²Division of Geological & Planetary Sciences, California Institute of Technology, MC 150-21, Pasadena, CA 91125, USA

³Harvard-Smithsonian Center for Astrophysics, 60 Garden Street, Cambridge, MA 02138, USA

⁴Leiden Observatory, Leiden University, P.O. Box 9513, 2300 RA Leiden, The Netherlands

Received 2015 December 12; accepted 2016 January 19; published 2016 February 8

ABSTRACT

An unsolved problem in step-wise core-accretion planet formation is that rapid radial drift in gas-rich protoplanetary disks should drive millimeter-/meter-sized particles inward to the central star before large bodies can form. One promising solution is to confine solids within small-scale structures. Here, we investigate dust structures in the (sub)millimeter continuum emission of four disks (TW Hya, HL Tau, HD 163296, and DM Tau), a sample of disks with the highest spatial resolution Atacama Large Millimeter/submillimeter Array observations to date. We retrieve the surface brightness distributions using synthesized images and fitting visibilities with analytical functions. We find that the continuum emission of the four disks is \sim axisymmetric but rich in 10–30 AU-sized radial structures, possibly due to physical gaps, surface density enhancements, or localized dust opacity variations within the disks. These results suggest that small-scale axisymmetric dust structures are likely to be common, as a result of ubiquitous processes in disk evolution and planet formation. Compared with recent spatially resolved observations of CO snow lines in these same disks, all four systems show enhanced continuum emission from regions just beyond the CO condensation fronts, potentially suggesting a causal relationship between dust growth/trapping and snow lines.

Key words: protoplanetary disks – stars: pre-main sequence – techniques: interferometric

Supporting material: data behind figure

1. INTRODUCTION

In the core-accretion planet formation scenario, planet formation starts with micron-sized interstellar medium grains and grows into kilometer-sized planetesimals (Goldreich & Ward 1973)—a size interval that poses great challenges since aggregates in this size range experience significant drag from the surrounding gas and thus drift toward the central star on extremely short timescales (Whipple 1972; Weidenschilling 1997). One promising solution is to restrain particles in a confined area, such as a local pressure maximum in the disk (Lyra et al. 2008; Johansen et al. 2009b; Pinilla et al. 2012; Birnstiel et al. 2013).

Continuum emission at (sub)millimeter wavelengths provides the most direct constraints on spatial distribution of millimeter-sized dust grains in disks. Recent observations of some transition disks show large-scale (>40 AU) radial and azimuthal inhomogeneities in continuum emission, providing direct evidence of dust trapping in disks (e.g., Casassus & van der Plas 2013; Isella et al. 2013; van der Marel et al. 2013; Pérez et al. 2014; Zhang et al. 2014). Such extreme inhomogeneities are commonly attributed to pressure bumps excited by giant planet(s) in the disk. However, this poses a chicken–egg dilemma on the planetesimal formation problem. Other mechanism(s) of dust trapping therefore need to be explored with higher spatial resolution observations in larger disk samples.

The Atacama Large Millimeter/submillimeter Array (ALMA) recently imaged the HL Tau protoplanetary disk with a superb spatial resolution of ~ 5 AU, revealing a remarkable series of dark and bright concentric rings in the continuum

emission (ALMA Partnership et al. 2015). The origin of these rings have been suggested to be gap opening(s) induced by embedded planets (Dipierro et al. 2015; Dong et al. 2015; Pinte et al. 2016) or changes in the dust properties near condensation fronts of dominant ices and clathrates (Okuzumi et al. 2015; Zhang et al. 2015). Searching for similar small-scale structures in a population of disks is thus critical for studying their origin and, ultimately, gaining an understanding of the planetesimal formation processes during gas-rich stages.

Here, we investigate the commonality of 10–30 AU-sized dust structures in a modest sample of four protoplanetary disks with the highest spatial resolution (sub)millimeter continuum observations to date.

2. OBSERVATIONS AND RESULTS

Our sample is composed of four protoplanetary disks: TW Hya, DM Tau, HD 163296, and HL Tau. Data on TW Hya and DM Tau were acquired as part of the ALMA cycle 2 project 2013.1.00198.S, and those on HD 163296 were obtained from project 2013.1.01268.S (V. Salinas et al. 2016, in preparation). Here, we mainly use the public data on HL Tau (ALMA Partnership et al. 2015) as a test case for our data analysis methodology. A summary of observations is provided in Table 1.

All visibility data were calibrated in CASA (version 4.2) using scripts provided by the ALMA staff. The absolute uncertainty of the flux calibration is $\sim 10\%$. We performed iterative self-calibration on both the continuum emission phase and amplitude to reduce the atmospheric decoherence.

Table 1
Observation Log and Source Properties

Source	ν_{rest} (GHz)	$\Delta\nu$ (GHz)	t_{int} (minute)	Beam ("×" (PA))	Baseline (k λ)	Flux (mJy)	rms (mJy beam ⁻¹)	Obs Date
TW Hya	349	2.938	29.0	0.28 × 0.28 (−10)	25–913	1415	0.096	2015 Jun 15
	661	1.875	39.9	0.35 × 0.20 (85)	33–931	5586	1.19	2014 Mar 12
DM Tau	329	2.234	7.7	0.41 × 0.33(24.9)	24–861	191	0.191	2015 Jun 14
HD 163296	233	2	154.5	0.38 × 0.27 (64.7)	19–638	710	0.017	2014 Jul 27–29
HL Tau	233	8	280.2	0.035 × 0.022(11)	12–11843	744	0.01	2014 Oct 24–31

Source	Distance (pc)	M_* (M_{\odot})	L_* (L_{\odot})	\dot{M} ($M_{\odot} \text{ yr}^{-1}$)	Incl (deg)	PA (deg)	R_{CO} (AU)	References
TW Hya	54	0.55	0.23	4×10^{-10}	7	355	17–23	(1), (2), (3), (4)
DM Tau	145	0.5	0.25	2×10^{-9}	35	155	70 ± 10	(5), (6)
HD 163296	122	2.3	27.2	7.6×10^{-8}	224	312	90_{-6}^{+8}	(7), (8)
HL Tau	145	1.3	—	1×10^{-6}	46.7	138	63 ± 10	(9)

Note. **References.** (1) Qi et al. (2004), (2) Hughes et al. (2011), (3) Qi et al. (2013), (4) Schwarz et al. submitted, (5) Piétu et al. (2007), (6) E. A. Bergin et al. 2016, in preparation, (7) Rosenfeld et al. (2013), (8) Qi et al. (2015), (9) ALMA Partnership et al. (2015).

Figure 1 presents the continuum visibility profiles from the four disks as a function of the deprojected baseline length. The baselines are generally ~ 700 k λ , except that those for HL Tau extend to $\sim 12,000$ k λ . All of our sources appear to be axisymmetric in synthesized images, as also suggested by the flat distribution of their imaginary visibility components as a function of deprojected uv -distance. The most important feature in the visibility profiles is that they show a wide variety of structures. TW Hya, for example, shows a bump around 290 and 250 k λ at 349 and 661 GHz, respectively, while HD 163296 shows two bumps and a dip below zero. HL Tau has three main bumps and extensive fine structures out to the longest uv -distances. In contrast, DM Tau has a smooth decay and, like HD 163296, goes below zero around 400 k λ . Since an interferometer acts as a spatial frequency filter, these visibility features can be used to reveal the detailed radial structures of the disks.

We stress that simple disk models widely used in the literature have difficulty in reproducing the visibility features observed here (Figures 1(f)–(i)). A disk with a tapered outer edge does not bring any significant visibility features. Those with a sharp outer edge (even those that decay over modest radial distances) yield features in the visibility profile, but that involve a series of bumps with a similar width and that occur at harmonic spatial frequencies. Another widely used model is a disk with a sharply truncated inner cavity. This model best fits disks that show *significant* negative components in their visibility profiles, and has been successful in modeling many transition disks (e.g., Andrews et al. 2011; Zhang et al. 2014; van der Marel et al. 2015). This model, however, does not work well for the disk sample here. It yields negative components that are too broad compared to the profiles of DM Tau and HD 163296. More specifically, the second nulls of the observed visibility profiles occur much closer to the first nulls than predicted. Furthermore, a cavity solution yields a visibility profile that monotonically decreases within the first null, while bumps are shown inside the first null in TW Hya and HL Tau. These discrepancies suggest that a sharp truncation alone cannot fit the data, and thus other structure elements are needed to explain the observations of the four disks.

3. MODELING

As discussed above, the simplest physical models fail to characterize the observed visibility profiles. More importantly, there is no coherent physical model available for the surface density profile of millimeter-sized particles because it may differ significantly from that of a viscously evolving gas disk due to radial drift and various pressure trapping mechanisms (Chiang & Youdin 2010; Andrews 2015). Due to these uncertainties, we employ an empirical approach to characterize spatial structures in the surface brightness distributions and discuss the possible origin of the observed disk structures in Section 4.

3.1. Deconvolution in Interferometric Observations

The retrieval of source intensity distributions from visibilities is essentially a deconvolution process due to discrete sampling on the uv -plane. Critically, without prior information, the deconvolution has no unique solution because the fine structures in the source intensity distribution correspond to unsampled high spatial frequency components that can have a wide range of amplitudes (Cornwell et al. 1999).

The most widely used deconvolution method in heterodyne interferometry is the CLEAN algorithm (Högbom 1974; Clark 1980), in which the final deconvolved image is a summation of a number of point sources convolved with a CLEAN beam (usually a Gaussian). This approach suppresses the highest spatial frequencies in the data and results in a smeared image.

Another common way to derive source intensity is the so-called *modeling-fitting* approach (Pearson 1999). Here, the observed visibilities are reproduced with a *parametric* model of the source intensity distribution. Advantages of this method include the utilization of the full spatial frequency information in data and straightforward error estimation. A significant drawback is that the possible form of models that fit the data may not be unique. Thus, the choice of a model function requires physical justification.

Here, we retrieve the radial surface brightness distributions of our disk sample using both the image (CLEAN) and model-fitting approaches.

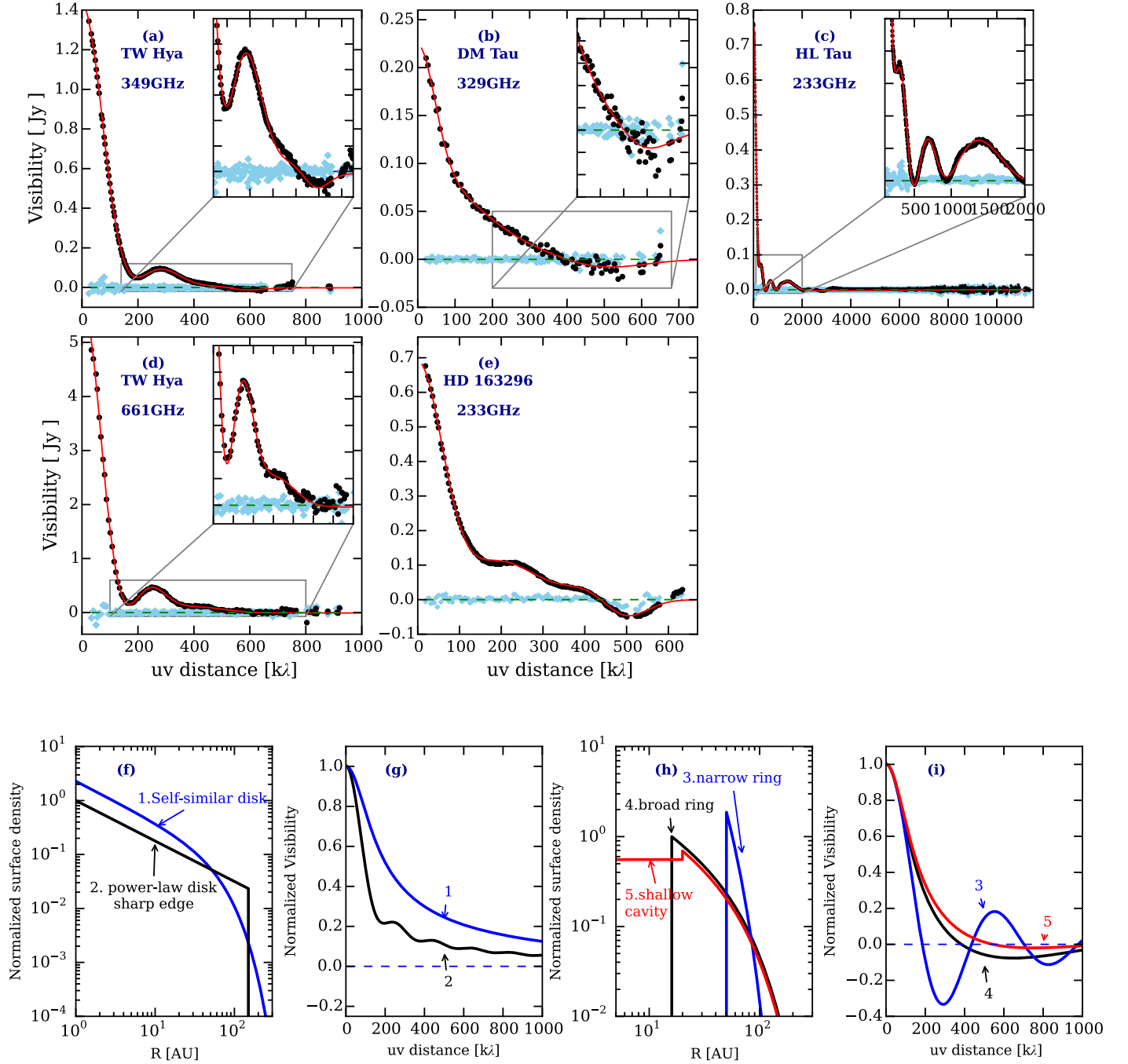


Figure 1. Panels (a)–(e): visibility profiles of continuum emission from TW Hya, HD 163296, DM Tau, and HL Tau. The real (black dots) and imaginary (light blue diamonds) parts of the visibilities are plotted as a function of deprojected uv -distance, and the statistical errors are smaller than the size of symbols. The red lines are our best-fitting models from Section 3. Panels (f) and (h): model surface density profiles for a disk at 140 pc. Panels (g) and (i): visibility profiles of the simple disks in panels (f) and (h). The data behind panels (a)–(e) are available in a FITS file

3.2. Model-fitting Approach

For circularly symmetric disk emission, the link between the deprojected uv -distance and radial brightness distribution is a Hankel transform (Pearson 1999):

$$u' = (u \cos \phi - v \sin \phi) \times \cos i \quad (1)$$

$$v' = u \sin \phi + v \cos \phi \quad (2)$$

$$V(\rho) = 2\pi \int_0^\infty I_\nu(\theta) \theta J_0(2\pi \quad (3)$$

where i and ϕ are the disk inclination and position angle, $\rho = \sqrt{u'^2 + v'^2}$ is the deprojected uv -distance in units of λ , θ is the radial angular scale from the disk center, and J_0 is a zeroth-order Bessel function of the first kind.

Here, we adopt an analytical function for $I(\theta)$ that is inspired by the multi-peak features seen in the visibility profiles (Figure 1). A peak in visibility indicates that some spatial frequencies, corresponding to some particular spatial scales, contribute more than other scales. Specifically, we model the

disk surface intensity distribution $I(\theta)$ with a group of Gaussian functions, each of which is modulated by a sinusoidal function with a spatial frequency of ρ_i (Equation (4)). The number of Gaussians is decided by the number of distinctive peaks in the visibility profile, and $\{a_0, \sigma_0, a_i, \sigma_i, \rho_i\}$ are free parameters. Thus, we choose

$$I(\theta) = \frac{a_0}{\sqrt{2\pi}\sigma_0} \exp\left(-\frac{\theta^2}{2\sigma_0^2}\right) + \sum_i \cos(2\pi\theta\rho_i) \times \frac{a_i}{\sqrt{2\pi}\sigma_i} \exp\left(-\frac{\theta^2}{2\sigma_i^2}\right). \quad (4)$$

This analytic function is empirical but consistent with realistic disk emission in several aspects. It ensures that $I(\theta)$ goes to zero at infinity. Further, the amplitudes of components associated with unsampled high spatial frequency go to zero quickly, meaning no fine structure information is added. Because real disk emission never becomes negative, the amplitude of $V(\rho)$ should gradually decay with spatial frequency. Thus, adding new visibility data with higher spatial frequency coverage will not change the known structures in $I(\theta)$ drastically. This approach is suitable for $I(\theta)$ functions without hard edges, and its utility is supported by the fact that no harmonic features associated with sharply truncated disks are found in the four disks. As the largest recoverable spatial scale (determined by the shortest baseline) is significantly larger than the disk emission, the total flux recovered from the analytic function is conserved.

After initial fitting, we find that HD 163296 and DM Tau show a flux decrement inside ~ 20 AU. To investigate if including a sharp inner edge would change the derived disk structures, we run additional models for the two disks by adding two extra free parameters to simulate an inner cavity—a sharp inner edge R_{cav} and a depletion factor δ ($0 \leq \delta \leq 1$). We assume the source intensity is flat inside the cavity since fine structures inside 20 AU are unresolved.

We use the Levenberg–Marquardt χ^2 minimization algorithm to search for the optimal value of free parameters. The initial guesses of the $\{\rho_i\}$ are the centers of peaks in visibility profiles and values of $\{a_i\}$ can be either positive or negative. The integral in Equation (4) is solved using a step size of 0.1 AU from 1 to 400 AU.

Using HL Tau as an example, Figures 4(a) and (b) show how including more visibilities changes the derived radial intensity distribution. In particular, by fitting only two Gaussians out to 500 k λ , we find a broad gap around 60 AU. Extending the data to 1000 k λ then demands fits with three Gaussians, and a second but narrower gap is found around 30 AU. When we include data within 2000 k λ , an innermost gap is seen at ~ 13 AU.

3.3. Image Approach

Here, we obtain radial intensity profiles from the CLEANed images directly. The visibilities are deprojected using Equations (1)–(2), deconvolved through the CLEAN algorithm using uniform weighting, and restored with a synthesized Gaussian beam. We then derive an azimuthally averaged $I(\theta)$ from the images. An illustrative comparison of radial intensity profiles of HL Tau is plotted in Figure 2(c). Clearly, the three major gaps (13, 32, and 63 AU) are reproduced nicely by the model-fitting approach using the $\rho \leq 2000$ k λ data, as

compared with the $I(\theta)$ derived from a CLEANed image based on visibilities of $\rho_{\text{max}} \sim 12000$ k λ .

3.4. Results

The retrieved radial intensity distributions of the four disks from both the image and modeling-fitting approaches are presented in Figure 3. Consistent results are found over larger scales, but (as expected by the HL Tau example) the modeling-fitting results clearly show more detailed structures. The continuum emission from all four disks is rich in radial structures with a typical length scale of 10–30 AU. For TW Hya, both approaches show that the 349 and 661 GHz emission has a turning point in the slope around 25 AU, followed by a plateau and then a gradual decay out to ~ 70 AU. Nomura et al. (2015) recently reported similar structures in the 336 GHz continuum emission of TW Hya. For HL Tau, its known major gaps at 13, 32, and 63 AU are well recovered. HD 163296 and DM Tau are two disks that show signs of central flux decrement in our modeling (see also DM Tau in Andrews et al. 2011). For these two, we show the best-fitting results of two analytical models: (1) a smooth disk (no sharp inner edge), and (2) a disk with a sharp inner edge (R_{cav} , δ). Both types of models retrieve consistent structures beyond ~ 30 AU—HD 163296 has two depressed zones centered near 55 and 100 AU, and DM Tau has a shallowly depressed emission zone around 70 AU. The two depressed zones in HD 163296 are also noticeable in its synthesized image along the beam minor axis. The two types of models give slightly different structures in the central region of HD 163296 and DM Tau, but both suggest that the central regions are probably just shallowly depleted. It is likely that there are unresolved emission from the central regions, and the flux decrement is possibly due to gaps rather a central cavity.

It is important to note that our proposed solutions are consistent with the data, but other disk structures may also be possible. It is the nature of deconvolution that the solution is not unique without a restrictive physical framework, a framework we currently lack in interpolating millimeter-sized particle distribution in disks. Under this condition, the simplest solutions are preferred. Our proposed solutions belong to the the simplest group since they are the smoothest models that fit the data (least high spatial frequency components needed).

4. DISCUSSION

4.1. Origin of Disk Structures

The richness of small-scale features in the surface brightness profiles shown in Figure 3 is striking. One possibility is that they are results of pressure bumps in protoplanetary disks. Possible mechanisms proposed for generating pressure bumps include: zonal flows (Johansen et al. 2009a; Simon et al. 2012), planet–disk interaction (Lyra et al. 2009), or a (water) snow-line-induced jump in surface density/ionization degree (Kretke & Lin 2007).

On the other hand, disk structures in (sub)millimeter continuum emission may also be produced by spatial variations in the dust opacity $\kappa_{\nu}(R)$. For example, grain growth itself will alter the dust opacity, and if localized, the change in opacity can mirror the effects of a change in the surface density profile. One example of a local effect is that dust growth near the water snow line from millimeter- to decimeter-sized pebbles is

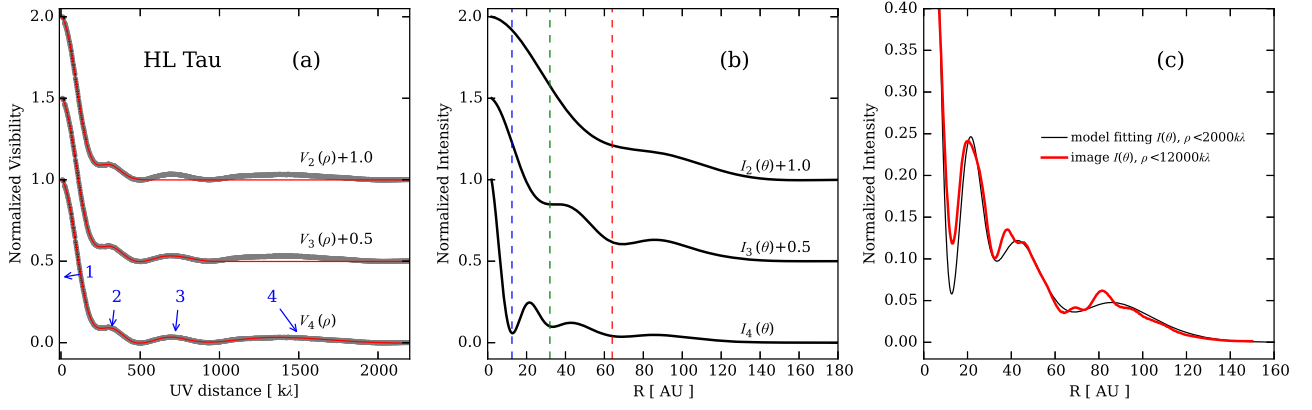


Figure 2. HL Tau as an example of the model-fitting approach. Panels (a) and (b) show how the derived surface intensity profile $I(\theta)$ changes when visibilities from larger uv -distances are included. The functions V_2 , V_3 , and V_4 in panel (a) correspond to the number of Gaussian functions in the model fitting, and the three vertical dashed lines in panel (b) highlight the centers of three major disk gaps reported by ALMA Partnership et al. (2015). (c) A comparison of the surface brightness derived from fitting the $\rho < 2000$ k λ visibilities and that resulting from a CLEANed image using all $\rho < 12000$ k λ data.

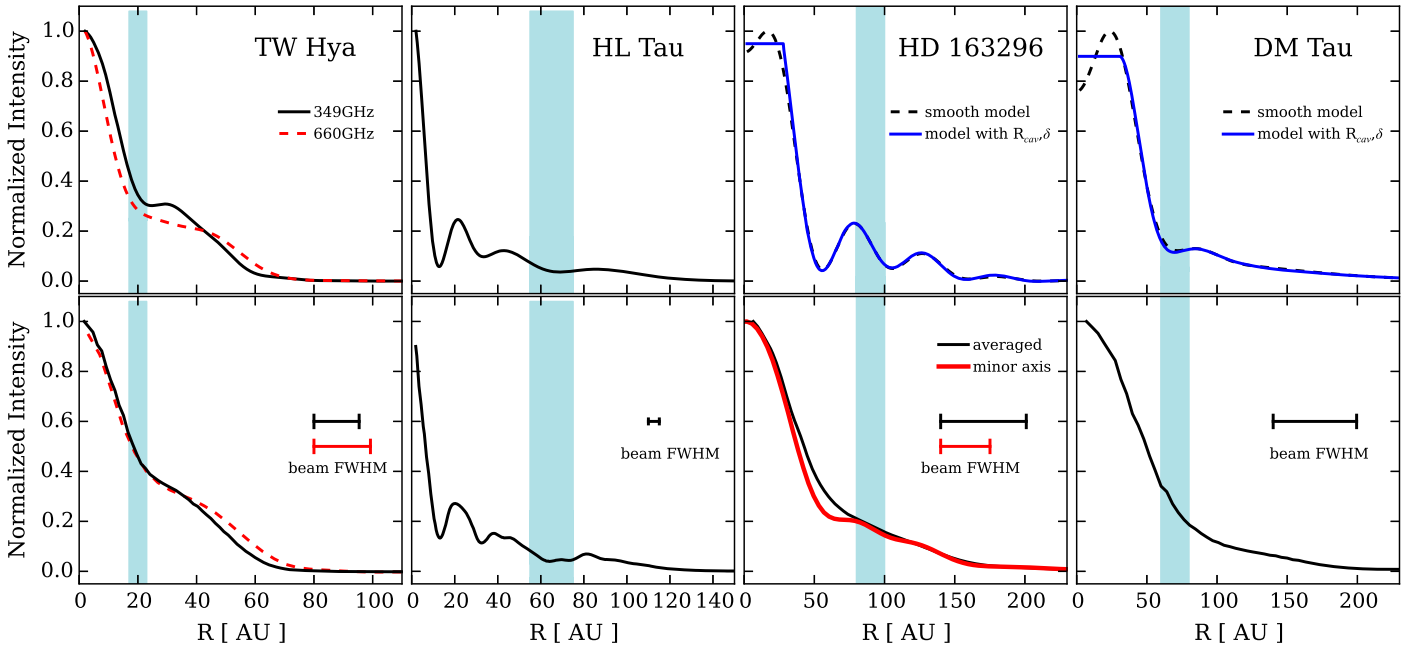


Figure 3. Radial surface brightness profiles of the four disks, derived from modeling-fitting (top row) and synthesized images (bottom row). The results of each disk are derived from the same visibilities, except for HL Tau, for which the modeling-fitting result uses visibilities with a maximum uv -distance that is much shorter than those used in the image ($\rho_{\max} \sim 2000$ k λ vs. 11843 k λ). For the modeling-fitting results of HD 163296 and DM Tau, we show two $I(\theta)$ profiles derived from a smooth model as well as a model with a sharply truncated central depletion zone. The light blue regions highlight the expected mid-plane CO snow-line region, including uncertainties.

possible on a timescale of only 1000 years (Ros & Johansen 2013).

4.2. Commonality of Smooth Disk Structures

So far, ALMA high spatial resolution observations have been only carried out for several well-studied classical T Tauri or Herbig star disks or transition systems (disks with a large central dust cavity). The majority of transition disks observed show some axisymmetry and sharp edges (van der Marel et al. 2015). The fraction of transition disks is estimated to be $\sim 10\%$ – 20% in nearby star-forming regions, based on the spectral energy distribution statistics (Kim et al. 2009; Merin et al. 2010); a greater fraction of $\sim 30\%$ (Andrews et al. 2011) is given based on resolved submillimeter imaging. Nevertheless,

current statistics indicates that disks with a large cavity (>20 AU) are probably not the majority of disks.

The four disks studied here perhaps provide a better match to the structure of the majority of disks, i.e., “full” disks or disks with small holes. One prediction from our sample is that circularly symmetric and smoothly varying structures with ~ 10 – 30 AU scale lengths are likely to be more common in disks in which the central cavity is either small or absent, as compared to structures such as the sharply truncated narrow rings or edges often seen in disks with a large central cavity.

4.3. Correlation between CO Snow Lines and Enhanced Continuum Emission

With sufficient spatial resolution to resolve CO snow lines, current ALMA observations have enabled the first direct

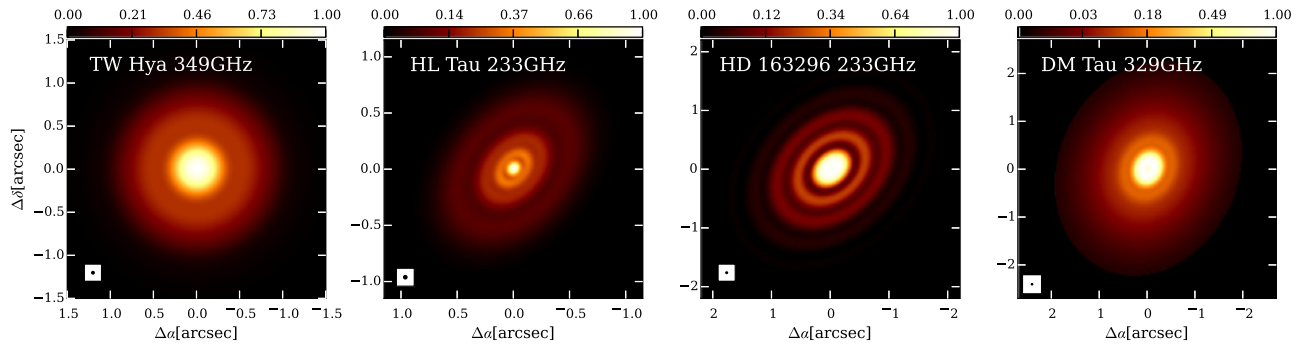


Figure 4. Prediction of long baseline ALMA images (at $0''.035$ resolution). The surface brightness distributions are based on our best model fitting of observed visibilities (Figure 3, top row). The intensity is normalized to the brightest pixel in each image.

investigations of the role of condensation fronts in the evolution of solids in nearby protoplanetary disks.

So far, N_2H^+ cation and C^{18}O emission have been used as two independent tracers of the mid-plane CO snow line. The two tracers show consistent results in TW Hya, where the mid-plane CO snow line is found to lie at 17–23 AU (Qi et al. 2013; Schwarz et al. 2016), and for HD 163296 where $R_{\text{CO}} = 90_{-6}^{+8}$ AU (Qi et al. 2015). Since no similar observations are available for HL Tau and DM Tau, we adopt CO snow-line radii based on radiative transfer models of the two disks, which yield $R_{\text{CO clathrate}} = 63 \pm 10$ AU for HL Tau (Men’shchikov et al. 1999; Zhang et al. 2015) and $R_{\text{CO}} = 70 \pm 10$ AU for DM Tau (E. A. Bergin 2016, in preparation).

Figure 3 presents the mid-plane CO snow-line locations on top of the surface brightness distributions in the four disks. The data suggest that there is possibly a relationship between the snow-line location and enhancements in the continuum emission.

4.4. Efficient Selection of Disk Candidates for Long Baseline ALMA Observations

The HL Tau observations demonstrate that ALMA long baseline observations are critical to revealing structures within the nominal planet-forming disk radii (<30 AU). However, a preliminary selection of sources is desired due to the long integration times and excellent atmospheric stability needed for long baseline observations. The modeling-fitting analysis above shows that distinctive features at visibility profiles are useful predictors of fine structures in disks. To search for 10 AU scale structures in disks of nearby star-forming regions (~ 140 pc), we propose that an initial survey with ~ 2000 k λ baseline (e.g., 2.6 km at 1.3 mm) should be sufficient to select sources with significant features in deprojected visibility profiles to then be imaged with full baseline (16 km) ALMA observations. In Figure 4, we show simulated long baseline ALMA images of our sample. The significant contrast in the HD 163296 image is induced by the visibility null near 450 k λ . The structures proposed here can easily be confirmed or ruled out in long baseline observations and, similarly, the potential association between CO snow lines and continuum emission enhancements.

This work was supported by funding from the National Science Foundation, grants AST-1344133 (INSPIRE) and AST-1514670. The authors thank John Monnier for discussions on model-fitting approaches to visibility data. The National Radio Astronomy Observatory is a facility of the

National Science Foundation operated under cooperative agreement by Associated Universities, Inc., This paper makes use of the following ALMA data sets: ADS/JAO.ALMA#2011.0.00015.SV, ADS/JAO.ALMA#2013.1.00198.S and ADS/JAO.ALMA #2013.1.01268.S. ALMA is a partnership of ESO (representing its member states), NSF (USA) and NINS (Japan), together with NRC (Canada), NSC and ASIAA (Taiwan), and KASI (Republic of Korea), in cooperation with the Republic of Chile. The Joint ALMA Observatory is operated by ESO, AUI/NRAO and NAOJ.

REFERENCES

- ALMA Partnership, Brogan, C. L., Pérez, L. M., et al. 2015, *ApJL*, 808, L3
 Andrews, S. M. 2015, *PASP*, 127, 961
 Andrews, S. M., Wilner, D. J., Espaillat, C., et al. 2011, *ApJ*, 732, 42
 Birnstiel, T., Dullemond, C. P., & Pinilla, P. 2013, *A&A*, 550, L8
 Casassus, S., van der Plas, G., M, S. P., et al. 2013, *Natur*, 493, 191
 Chiang, E., & Youdin, A. N. 2010, *AREPS*, 38, 493
 Clark, B. G. 1980, *A&A*, 89, 377
 Cornwell, T., Braun, R., & Briggs, D. S. 1999, in ASP Conf. Ser. 180, Synthesis Imaging in Radio Astronomy II, ed. G. B. Taylor, C. L. Carilli, & R. A. Perley (San Francisco, CA: ASP), 151
 Dipierro, G., Price, D., Laibe, G., et al. 2015, *MNRAS*, 453, L73
 Dong, R., Zhu, Z., & Whitney, B. 2015, *ApJ*, 809, 93
 Goldreich, P., & Ward, W. R. 1973, *ApJ*, 183, 1051
 Högbom, J. A. 1974, *A&AS*, 15, 417
 Hughes, A. M., Wilner, D. J., Andrews, S. M., Qi, C., & Hogerheijde, M. R. 2011, *ApJ*, 727, 85
 Isella, A., Pérez, L. M., Carpenter, J. M., et al. 2013, *ApJ*, 775, 30
 Johansen, A., Youdin, A., & Klahr, H. 2009a, *ApJ*, 697, 1269
 Johansen, A., Youdin, A., & Mac Low, M.-M. 2009b, *ApJL*, 704, L75
 Kim, K. H., Watson, D. M., Manoj, P., et al. 2009, *ApJ*, 700, 1017
 Kretke, K. A., & Lin, D. N. C. 2007, *ApJL*, 664, L55
 Lyra, W., Johansen, A., Klahr, H., & Piskunov, N. 2008, *A&A*, 491, L41
 Lyra, W., Johansen, A., Klahr, H., & Piskunov, N. 2009, *A&A*, 493, 1125
 Men’shchikov, A. B., Henning, T., & Fischer, O. 1999, *ApJ*, 519, 257
 Merín, B., Brown, J. M., Oliveira, I., et al. 2010, *ApJ*, 718, 1200
 Nomura, H., Tsukagoshi, T., Kawabe, R., et al. 2015, *ApJ*, submitted (arXiv:1512.05440)
 Okuzumi, S., Momose, M., Sirono, S.-i., Kobayashi, H., & Tanaka, H. 2015, *ApJ*, in press (arXiv:1510.03556)
 Pearson, T. J. 1999, in ASP Conf. Ser. 180, Synthesis Imaging in Radio Astronomy II, ed. G. B. Taylor, C. L. Carilli, & R. A. Perley (San Francisco, CA: ASP), 335
 Pérez, L. M., Isella, A., Carpenter, J. M., & Chandler, C. J. 2014, *ApJL*, 783, L13
 Piétu, V., Dutrey, A., & Guilloteau, S. 2007, *A&A*, 467, 163
 Pinilla, P., Benisty, M., & Birnstiel, T. 2012, *A&A*, 545, A81
 Pinte, C., Dent, W. R. F., Ménard, F., et al. 2016, *ApJ*, 816, 25
 Qi, C., Ho, P. T. P., Wilner, D. J., et al. 2004, *ApJL*, 616, L11
 Qi, C., Öberg, K. I., Andrews, S. M., Wilner, D. J., et al. 2015, *ApJ*, 813, 128
 Qi, C., Öberg, K. I., Wilner, D. J., et al. 2013, *Sci*, 341, 630
 Ros, K., & Johansen, A. 2013, *A&A*, 552, A137

- Rosenfeld, K. A., Andrews, S. M., Hughes, A. M., Wilner, D. J., & Qi, C. 2013, [ApJ](#), **774**, 16
- Schwarz, K. R., Bergin, E. A., Cleeves, L. I. et al. 2016, *ApJ*, submitted
- Simon, J. B., Beckwith, K., & Armitage, P. J. 2012, [MNRAS](#), **422**, 2685
- van der Marel, N., van Dishoeck, E. F., Bruderer, S., Pérez, L., & Isella, A. 2015, [A&A](#), **579**, A106
- van der Marel, N., van Dishoeck, E. F. v., Bruderer, S., et al. 2013, [Sci](#), **340**, 1199
- Weidenschilling, S. J. 1997, [Icar](#), **127**, 290
- Whipple, F. L. 1972, in *From Plasma to Planet*, ed. A. Elvius (New York: John Wiley), 211
- Zhang, K., Blake, G. A., & Bergin, E. A. 2015, [ApJL](#), **806**, L7
- Zhang, K., Isella, A., Carpenter, J. M., & Blake, G. A. 2014, [ApJ](#), **791**, 42