

ARTICLE

Received 6 Jan 2015 | Accepted 26 Mar 2015 | Published 2 Jun 2015

DOI: [10.1038/ncomms8044](https://doi.org/10.1038/ncomms8044)

OPEN

Theory and computation of hot carriers generated by surface plasmon polaritons in noble metals

Marco Bernardi^{1,2,*}, Jamal Mustafa^{1,2,*}, Jeffrey B. Neaton^{1,2,3,4} & Steven G. Louie^{1,2}

Hot carriers (HC) generated by surface plasmon polaritons (SPPs) in noble metals are promising for application in optoelectronics, plasmonics and renewable energy. However, existing models fail to explain key quantitative details of SPP-to-HC conversion experiments. Here we develop a quantum mechanical framework and apply first-principles calculations to study the energy distribution and scattering processes of HCs generated by SPPs in Au and Ag. We find that the relative positions of the *s* and *d* bands of noble metals regulate the energy distribution and mean free path of the HCs, and that the electron-phonon interaction controls HC energy loss and transport. Our results prescribe optimal conditions for HC generation and extraction, and invalidate previously employed free-electron-like models. Our work combines density functional theory, GW and electron-phonon calculations to provide microscopic insight into HC generation and ultrafast dynamics in noble metals.

¹Department of Physics, University of California at Berkeley, 366 LeConte Hall #7300, Berkeley, California 94720, USA. ²Materials Sciences Division, Lawrence Berkeley National Laboratory, Berkeley, California 94720, USA. ³Molecular Foundry, Lawrence Berkeley National Laboratory, Berkeley, California 94720, USA. ⁴Kavli Institute for Energy Nanosciences at Berkeley, Berkeley, California 94720, USA. *These authors contributed equally to this work. Correspondence and requests for materials should be addressed to S.G.L. (email: sglouie@berkeley.edu).

Surface plasmon polaritons (SPPs) are electron collective excitations generated by light at the interface between a metal and a dielectric¹. Modelling of SPPs is dominated by approaches that employ classical electromagnetism and account empirically for the properties of the materials supporting the SPP. Yet, the inherently quantum mechanical nature of SPPs^{2,3} becomes manifest in their scattering and decay processes in bulk and nanoscale materials. A key example is the decay of SPPs to electron-hole pairs, a process whose crucial importance is twofold: first, it is a main energy loss mechanism of SPPs in metals, currently limiting the applicability of plasmonics^{4,5}; second, it leads to generation of hot electrons and holes with application in several branches of applied physics⁶. Recent experiments reported the extraction of such SPP-induced hot carriers (HCs) in metals before they thermalize—typically over nanometer lengths and sub-picosecond times—by injecting the HCs over a Schottky barrier into a semiconductor or oxide^{7–9}, or by transferring them into surface adsorbates to perform chemical reactions with large activation barriers^{6,10,11}. The vast literature on HCs in noble metals generated by intense light pulses^{12–14} (instead of SPPs), together with recent calculations on SPP-to-HC conversion^{15,16}, help interpret these recent experiments on SPP-induced HCs.

Lack of predictive and accurate quantum mechanical approaches to study HCs generated by SPPs or photons has led to ambiguity in the microscopic interpretation of experiments involving HCs in Au and Ag, two mainstay materials in plasmonics⁴. In particular, recent studies indicate that SPP decay excites electronic transitions from occupied states close to the Fermi energy (E_F)¹⁰, implying that most of the SPP energy goes into hot electrons rather than hot holes, and that nanocrystals with <10 nm diameter are necessary to obtain HCs with significant energy¹⁷ (for example, 1–2 eV away from E_F). The mean free paths (MFPs) of HCs in noble metals appear to be short¹⁰, though a quantitative estimate of the MFPs and their dependence on crystal direction is not available. In addition, it is often assumed that HC scattering and thermalization are dominated by Auger processes^{10,14}, since thermalization induced by phonons occurs on a slower time scale¹⁴. As shown in this work, all these conclusions must be revised.

Here, we develop a quantum mechanical framework to study the energy distribution of HCs generated by SPPs and photons in Au and Ag, and employ *ab initio* calculations of the electron–phonon (*e*–ph) and electron–electron (*e*–*e*) interactions to study the MFPs and relaxation times of HCs within 5 eV of the Fermi energy. Our approach is free of experimental input, and combines density functional theory (DFT)¹⁸, the GW (where *G* is the Green function, *W* is the screened Coulomb potential, and GW is the diagram employed for the electron self energy) method¹⁹, and *ab initio* *e*–ph calculations²⁰. Our ability to use extremely fine grids for Brillouin zone (BZ) integrations allows us to resolve HC scattering with unprecedented accuracy²¹. We find that the

interband transition threshold (between *d* and *s* states) defines two regimes for HC generation and transport. The decay of SPPs with energy lower than the interband threshold leads to generation of long-lived HCs with long isotropic MFPs of up to 40 nm and energy within 1–2 eV of E_F . On the other hand, decay of SPPs with energy higher than the interband threshold leads to generation of short-lived hot holes in *d* states with anisotropic and short (sub 5 nm) MFPs, and hot electrons with only <1 eV energy above E_F . The regime characterized by SPP energy below the interband threshold is better suited to employ HCs in applications requiring long MFPs, and allows one to optimize HC generation by tuning the SPP energy. These results represent an important first step to understand SPP decay and energy loss, and to control HC generation and transport in bulk and nanostructured noble metals.

Results

Theory of SPP—electron coupling. Coupling of SPPs or photons to electrons in materials can be described in the framework of many-body perturbation theory²². The lowest order Feynman diagram for this coupling process, shown in Table 1, describes a boson (here, SPP or photon) coupling to the electron gas through the electronic polarizability χ and a coupling matrix element *g*. This diagram is analogous to the lowest order coupling of phonons to electrons^{23,24}. The decay rate $\Gamma(\mathbf{q}_p, E_p)$ for a boson of momentum $\hbar\mathbf{q}_p$ and energy E_p to electron–hole pairs is proportional to the imaginary part of the self-energy²²:

$$\Gamma(\mathbf{q}_p, E_p) = \frac{2\pi}{\hbar} \sum_{n,n',\mathbf{k}} |g_{n,n',\mathbf{k}}(\mathbf{q}_p, E_p)|^2 \frac{1}{\pi} \text{Im} \left[\frac{f_{n,\mathbf{k}} - f_{n',\mathbf{k}+\mathbf{q}_p}}{E_p(\mathbf{q}_p) - (E_{n',\mathbf{k}+\mathbf{q}_p} - E_{n,\mathbf{k}}) - i\eta} \right] \quad (1)$$

where $-E_{n,\mathbf{k}}$ and $E_{n',\mathbf{k}+\mathbf{q}_p}$ are, respectively, the quasiparticle energies of the hot hole in a state with band *n* and crystal momentum $-\mathbf{k}$, and hot electron in a state with band *n'* and crystal momentum $\mathbf{k} + \mathbf{q}_p$, as generated in the boson decay process. In addition, $f_{n,\mathbf{k}}$ and $f_{n',\mathbf{k}+\mathbf{q}_p}$ are Fermi occupations, η is a small broadening, and the sum is contributed by electronic transitions from occupied to empty states that differ by $\hbar\mathbf{q}_p$ in crystal momentum and E_p in energy. If the matrix elements have a weak band and \mathbf{k} dependence, the decay rate of a SPP or photon is proportional to the imaginary part of the electronic polarizability, $\text{Im}\chi(\mathbf{q}_p, E_p)$.

Here, we employ a quantity proportional to $\text{Im}\chi(\mathbf{q}_p, E_p)$, the finite momentum joint density of states (FM-JDOS) $J(\mathbf{q}_p, E_p)$, defined as the number of states per unit energy separated by momentum $\hbar\mathbf{q}_p$ and energy E_p in the quasiparticle bandstructure:

$$J(\mathbf{q}_p, E_p) = \frac{1}{\pi} \text{Im}\chi(\mathbf{q}_p, E_p) = \frac{1}{\pi} \text{Im} \left[\sum_{n,n',\mathbf{k}} \frac{f_{n,\mathbf{k}} - f_{n',\mathbf{k}+\mathbf{q}_p}}{E_p(\mathbf{q}_p) - (E_{n',\mathbf{k}+\mathbf{q}_p} - E_{n,\mathbf{k}}) - i\eta} \right] \quad (2)$$

Table 1 | Boson–electron coupling and matrix elements.

Interaction	Matrix element	Diagram
Plasmon–electron	$ g^{\text{pl}} ^2 = 2\pi e^2 E_p / q_p^2$	
Photon–electron	$ g_{n,n',\mathbf{k}}^{\text{PH}} ^2 = (e\hbar/m)^2 [1/(2\epsilon E_p V)] \mathbf{e}_{\mathbf{q}_p} \cdot \mathbf{p}_{n,n',\mathbf{k}}(\mathbf{q}_p = 0) ^2$	
SPP–electron	$ g_{n,n',\mathbf{k}}^{\text{SPP}} ^2 = (e\hbar/m)^2 [1/(2\epsilon_{\text{eff}} E_p A L_z)] \mathbf{e}_{\mathbf{q}_p}^{\text{TM}} \cdot \mathbf{p}_{n,n',\mathbf{k}}(\mathbf{q}_p) ^2$	

SPP, surface plasmon polariton.

Square modulus of the coupling matrix element, $|g|^2$, and Feynman diagram for the self-energy of the boson in the lowest-order interaction for the three bosons considered here—plasmons, photons and SPPs—with electrons in a material. These interactions share a common diagram (right column) consisting of a polarizability bubble χ multiplied by two coupling vertices *g*. The wiggly lines on the two sides of the self-energy loop $g^2\chi$ indicate the incoming and outgoing bosons.

The FM-JDOS is a measure of the phase space available for the decay of a SPP or photon with momentum $\hbar\mathbf{q}_p$ and energy E_p . Greater FM-JDOS values generally would correspond to greater SPP decay and HC generation rates.

The coupling matrix elements in equation (1) can be derived with a range of theoretical approaches. We first discuss the coupling of electrons to plasmons—that is, collective electronic excitations in the absence of light—since theories developed for plasmons have been occasionally applied to SPPs²⁵. The so-called Landau damping²⁶ treatment of the electron gas derives the decay rate Γ_p of a bulk plasmon in the weak coupling limit via the zeros of the complex macroscopic dielectric function ϵ_M of the metal close to the real energy axis, that is, $\epsilon_M(\mathbf{q}_p, E_p + i\hbar\Gamma_p(\mathbf{q}_p, E_p)) = 0$. Due to the bosonic nature of plasmons, the decay rate $\Gamma(\mathbf{q}_p, E_p)$ has the form given in equation (1), with coupling matrix elements²⁶ $|g^{\text{PL}}|^2 = 2\pi e^2 E_p / q_p^2$. In spite of its common use, Landau damping is rarely discussed in terms of the diagram in Table 1 and the coupling g^{PL} , though this viewpoint elucidates its physical origin.

The coupling matrix elements for SPPs and photons can be derived by second quantization of the vector potential²⁷ (see Methods). For photons, the coupling is given by the well-known dipole matrix element $|g_{n,n',\mathbf{k}}^{\text{PH}}|^2 = (e\hbar/m)^2 [1/(2\epsilon E_p V)] |\mathbf{e}_{\mathbf{q}_p} \cdot \mathbf{p}_{n,n',\mathbf{k}}(\mathbf{q}_p = 0)|^2$, where V is the volume, $\mathbf{e}_{\mathbf{q}_p}$ is the polarization vector, and $\mathbf{p}_{n,n',\mathbf{k}}(\mathbf{q}_p)$ the transition dipole matrix element. For SPPs at a metal–dielectric interface, we apply a vector potential second quantization procedure^{28,29} (see Methods) to obtain the SPP–electron coupling $|g_{n,n',\mathbf{k}}^{\text{SPP}}|^2$ given in Table 1. The SPP–electron coupling has a form analogous to that for photons, with two important differences. First, the volume V is replaced by the SPP–field volume $V_{\text{SPP}} = A \cdot L_z$, where A is the metal–dielectric interface area and L_z the decay length of the SPP in the metal. Since L_z is of order 10 nm at visible wavelength for noble metals¹ and thus much shorter than the light absorption depth, the electric field associated with the SPP is concentrated to a small volume V_{SPP} at the metal–dielectric interface¹, resulting in enhanced local

generation of HCs from SPPs compared with light. Second, the SPP wavevector \mathbf{q}_p is in general comparable to the size of the BZ, while for photons $\mathbf{q}_p \approx 0$. The finite SPP wavevector can significantly alter the phase space available for SPP decay, as dictated by the \mathbf{q}_p dependence of the FM-JDOS. We remark that additional momentum can be transferred by phonons and defects assisting the SPP scattering process.

For both SPP and photon decay, the FM-JDOS regulates the phase space for HC generation. Since the experimental conditions and the material-specific SPP dispersion relation dictate the SPP energy E_p and wavevector \mathbf{q}_p ^{1,30,31}, we study the FM-JDOS as a function of \mathbf{q}_p and E_p and arbitrarily treat them for the purpose of this work as independent variables; HC generation from light is obtained as the specific limit $\mathbf{q}_p = 0$. We note that the SPP decay rate $\Gamma_p(\mathbf{q}_p, E_p)$ could also be computed by evaluating the coupling matrix elements explicitly for fixed experimental conditions and dispersion relation¹ $E_p(\mathbf{q}_p) = c\hbar q_p \sqrt{(\epsilon_M + \epsilon_D)/(\epsilon_M \epsilon_D)}$. This approach would enable first-principles calculations of plasmonic losses and the MFPs of SPPs in materials^{4,5}.

HC generation. To study HC generation from SPPs at a metal–dielectric interface (see Fig. 1a), we compute the FM-JDOS for Au and Ag, as shown in Fig. 1b, for SPP energies up to 5 eV and increasing SPP wavevectors along the Γ – L direction in the BZ (that is, for SPPs propagating along the [111] crystallographic direction). Our calculations are carried out using GW bandstructures (see Methods).

Detailed features of the bandstructures of Au and Ag, shown in Fig. 2, regulate HC generation and transport in these materials. The main features of the Au and Ag bandstructures are the presence of relatively dispersionless, occupied d bands with large associated electronic DOS, straddled by a free-electron-like s band. The top of the d bands is located at energy E_{int} below the Fermi energy, where E_{int} is the threshold for interband (d to s) electronic transitions^{32,33}. From our GW calculations, we find E_{int} values of 2.3 eV in Au and 3.7 eV in Ag (see Fig. 2), in excellent agreement with experiment^{5,32,33}. The free-electron-like s band spans an energy window between E_{int} below and over

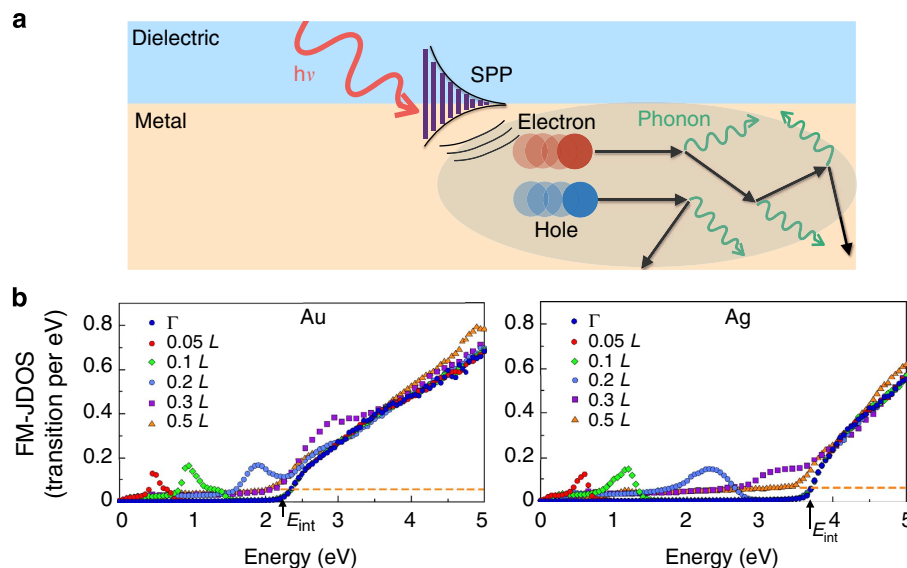


Figure 1 | Hot carrier generation in Au and Ag. (a) Schematic of a metal–dielectric interface under illumination, showing the decay of a SPP to a pair of hot electron and hole. The hot carriers are scattered and lose energy through phonon emission processes. The mean free path corresponds to the length of the black arrows, and the excited volume within the metal is shaded in grey. (b) The FM-JDOS of Au (left panel) and Ag (right panel) as a function of SPP energy, shown for several values of \mathbf{q}_p along the Γ – L direction, up to a value of $\mathbf{q}_p = 0.5 L$. The SPP wavevector is expressed in units of the L point in the BZ, where $L = (\pi/a)(1,1,1)$, with a the lattice constant. The FM-JDOS for photons and SPPs with vanishingly small wavevector corresponds to the $\mathbf{q}_p = 0$ case (curve labelled as Γ). The dashed lines indicate the value of the FM-JDOS low-energy tail for large wavevectors.

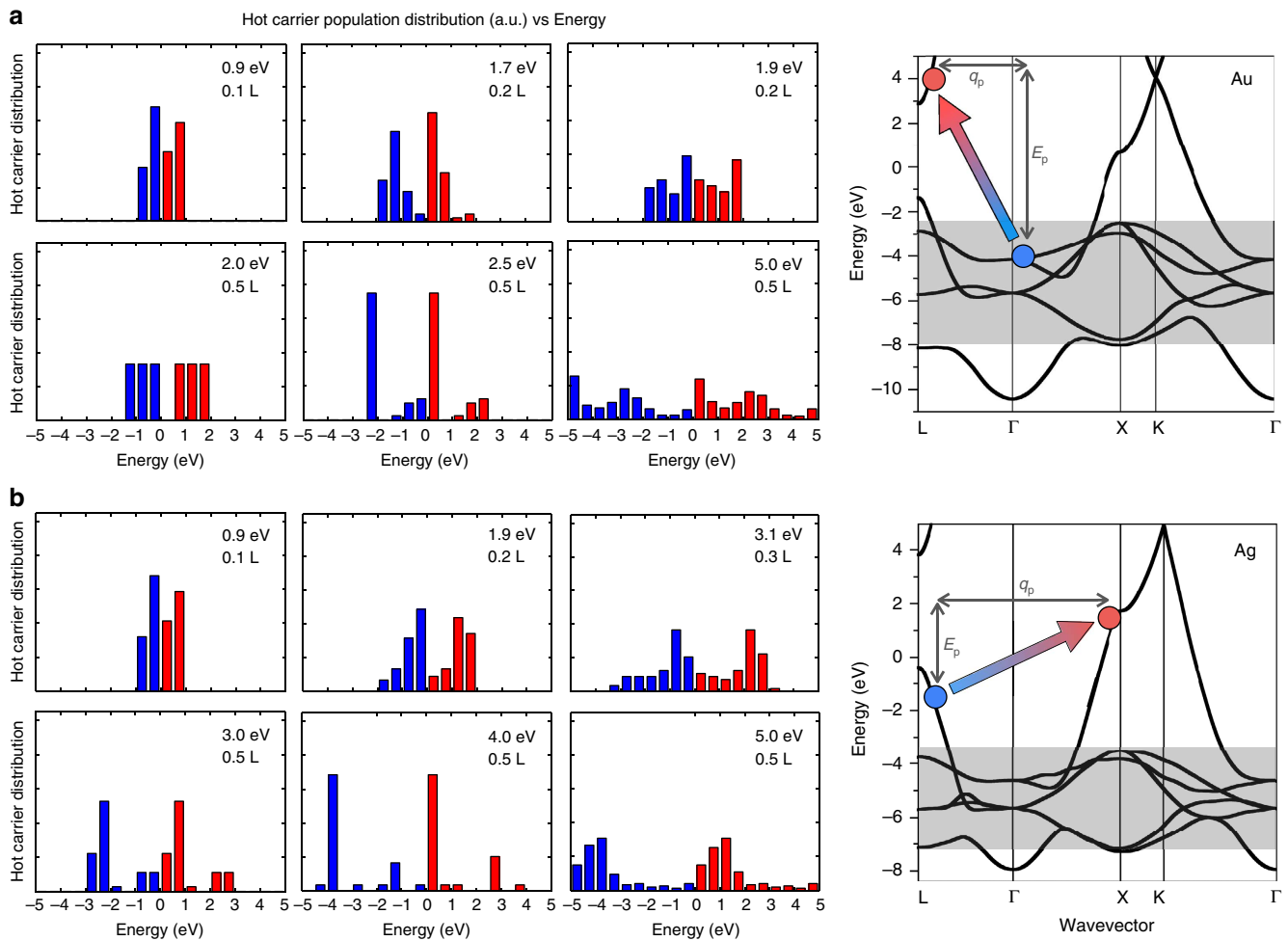


Figure 2 | Energy distribution of hot carriers. Energy distribution of hot electrons (red) and hot holes (blue) in Au (**a**) and Ag (**b**) generated by SPP decay. Each plot refers to a specific SPP energy and wavevector. The right panel shows the GW bandstructures of Au and Ag, respectively, in **a** and **b**, along with a schematic of the momentum and energy conserving excitation of a hot electron-hole pair resulting from the decay of a SPP with wavevector \mathbf{q}_p and energy E_p . The shaded area indicates the energy range of the d states. The energy difference between the Fermi energy and the top of the d bands corresponds to the interband transition threshold. The Fermi energy is the zero of the energy axis.

4 eV above E_F , and hence dominates the electronic properties of Au and Ag near E_F .

The FM-JDOS in Fig. 1b follows similar trends in Au and Ag, with deviations due to the different E_{int} values in the two materials. We first discuss the FM-JDOS with $\mathbf{q}_p = 0$, which quantifies the phase space for HC generation for both SPPs with very small wavevectors and photons. The FM-JDOS curve with $\mathbf{q}_p = 0$ (Γ) has a zero value for SPP energies up to E_{int} , indicating the absence of possible SPP decay into HCs in this energy range. For SPP energies greater than E_{int} , the FM-JDOS increases linearly with energy, indicating that a large phase space opens up for HC generation. In this regime, SPP damping is strong, and HC generation is intense and dominated by formation of hot d holes collecting most of the energy from the SPP, as discussed below.

For small SPP wavevectors along the Γ - L direction up to $\sim 0.2L$, we find a peak in the FM-JDOS corresponding to SPP decay through intraband transitions within the s band. The energy position of the peak increases linearly with SPP wavevector, and for large enough wavevectors merges with the FM-JDOS above E_{int} . In Au, the intraband peak is below E_{int} for \mathbf{q}_p values up to $\sim 0.2L$, and in Ag for \mathbf{q}_p values up to $\sim 0.3L$ due to the higher E_{int} value in Ag. The presence of an intraband peak associated with s - s transitions can be understood by examining

the energy difference between states with momentum \mathbf{k} and $\mathbf{k} + \mathbf{q}_p$ in the free-electron-like s band:

$$E(\mathbf{k} + \mathbf{q}_p) - E(\mathbf{k}) = \frac{\hbar^2}{2m} (2\mathbf{k} \cdot \mathbf{q}_p + q_p^2) \quad (3)$$

For small wavevector \mathbf{q}_p , the term quadratic in q_p can be neglected, while the term linear in \mathbf{q}_p increases by $\sim \hbar^2 \pi^2 \sqrt{3} / (10ma^2) \approx 1$ eV (a is the lattice constant) for an increase of \mathbf{q}_p by 1/10 the Γ - L distance. The computed FM-JDOS confirms these trends, as seen by the increase in the energy of the intraband peak by ~ 1 eV in going from 0.1 L to 0.2 L and from 0.2 L to 0.3 L . In this small wavevector regime, generation of HCs is appreciable only if the SPP energy and wavevector are matched to the intraband FM-JDOS peak, namely if $E_p(\mathbf{q}_p) \approx (\hbar^2 \mathbf{k} \cdot \mathbf{q}_p) / m$ for a set of \mathbf{k} points in the BZ. When this condition is met, intense HC generation from intraband transitions can occur, resulting in an almost equal apportioning of the SPP energy between hot electrons and holes, as discussed below.

For SPP wavevectors larger than $\sim 0.3L$, the FM-JDOS resembles that for $\mathbf{q}_p = 0$ except from a flat tail that extends to low SPP energy, as shown by the dashed lines in Fig. 1. This tail is due to generation of HCs from intraband transitions with large transferred momentum from the decay of SPPs with wavevector

comparable to the size of the BZ. The FM-JDOS for $\mathbf{q}_p > 0.5 L$ is unchanged and nearly identical to the $0.5 L$ case.

To summarize, we find two HC generation regimes. For SPPs with energy $E_p < E_{\text{int}}$, optimal generation can be achieved using SPPs with relatively small wavevector (less than $\sim 1/5$ the BZ size) that are matched with the FM-JDOS peak, while HC generation is relatively weak for SPPs with larger momentum. For SPPs with energy $E_p > E_{\text{int}}$, HC generation is intense regardless of the SPP momentum. We find identical trends for SPPs with wavevector in the Γ -X high-symmetry direction, that is, propagating along the [100] direction. Removal of the electron gas approximation used in simplified treatments of SPPs in noble metals¹⁷ is necessary to capture the delicate interplay found here between the energetics of the s and d states and intraband (s - s) and interband (d - s) transitions.

Energy distribution of HCs. Figure 2 shows the energy distribution of HCs generated by specifically assumed SPPs with energy increasing in small steps from ~ 1 to 5 eV and a range of wavevectors in the Γ -L direction, along with the GW bandstructures. From now on throughout the manuscript, all HC energies are referenced to the Fermi energy (E_F), and the energy of the hot hole is $-E$, that is, the direction of increasing energy in the bandstructure is downward for holes and upward for electrons. The energy distribution histograms identify the HCs generated in the two regimes discussed above. For SPPs with energy lower than E_{int} , hot holes and electrons are generated with a roughly uniform energy distribution as a result of the s - s intraband transitions. The HC energy distributions shown in Fig. 2 in this energy range pertain to SPPs with energy and wavevectors matched to the FM-JDOS intraband peaks (see Fig. 1). While the details of the energy distribution in this regime are sensitive to the SPP energy E_p , the overall trends indicate that HCs are generated with an average energy of $\sim E_p/2$.

For SPPs with energy greater than E_{int} , we find a change to a different HC generation regime. At the onset of the interband transitions for SPP energy of 2.3 eV in Au and 3.7 eV in Ag, on SPP decay the hot holes absorb most of the SPP energy, creating a spike in the hot hole population at the top of the d band. On the other hand, hot electrons have only modest energies in this regime. At higher SPP energies of ~ 5 eV, the HC population become approximately uniformly distributed over a wide energy

range, although a peak in the hot d hole population is still present in Ag due to its higher E_{int} . These trends are common to both Au and Ag, and we have verified that Cu, a material less commonly used in plasmonics⁵ and not discussed here, follows identical HC generation and energy distribution trends as Au and Ag.

HC scattering processes. While ample experimental^{13,32} and theoretical¹⁴ data exists on HCs in noble metals, characterization of the MFPs and relaxation times of HCs using *ab initio* theory has been limited by the absence of accurate e -ph calculations including all phonon modes over the entire BZ. First-principles calculations combining e -ph and e - e interactions are necessary to characterize the anisotropic and energy-dependent MFPs of HCs in materials, as shown in our recent work on HCs in semiconductors²¹. We compute the scattering rate (and its inverse, the relaxation time) for the e -ph and e - e interactions from the imaginary part of the respective self-energies, $\text{Im}\Sigma^{e\text{-ph}}$ and $\text{Im}\Sigma^{e\text{-}e}$, and resolve these quantities for each electronic state with band n and \mathbf{k} -point on very fine BZ grids (see Methods and ref. 21). The total relaxation times $\tau_{n,\mathbf{k}}$, combining the e -ph and e - e interactions, are obtained as

$$\tau_{n,\mathbf{k}} = \left[2/\hbar \left(\text{Im}\Sigma_{n,\mathbf{k}}^{e\text{-}e} + \text{Im}\Sigma_{n,\mathbf{k}}^{e\text{-ph}} \right) \right]^{-1}.$$

Figure 3 shows the total relaxation times $\tau_{n,\mathbf{k}}$ for HCs in Au and Ag with energy up to 5 eV. The total relaxation times decay rapidly away from E_F following a volcano-shaped trend, with the peak of the volcano centred close to E_F . In Ag, we find an additional peak in the relaxation times at the top of the d bands, in agreement with recent photoemission experiments³⁴. Analysis of the e -ph and e - e scattering rates (see the bottom panels in Fig. 3) highlights the differences between the energy windows spanned by the s and d states, and elucidates the origin of the relaxation time trends. In the energy range spanned by the s states, the e - e scattering rates (that is, $\text{Im}\Sigma^{e\text{-}e}$) form a parabola with minimum value of zero at E_F as predicted by Fermi liquid theory¹⁴, while the e -ph scattering rates are relatively constant and exhibit a minimum at the onset of the d states and a maximum 1–2 eV above E_F . The e - e scattering rates become greater than the e -ph ~ 2 eV away from E_F , thus indicating that Auger and impact ionization processes included in the e - e term dominate HC scattering only 2 eV or more away from E_F , while e -ph dominates HC scattering within 2 eV of E_F . Combining the

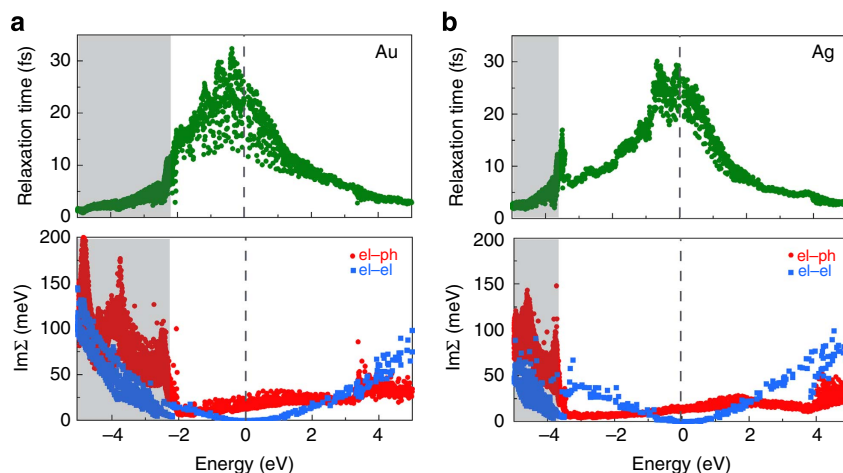


Figure 3 | Ultrafast hot carrier scattering. Relaxation time and scattering rates for HCs in Au (a) and Ag (b) within 5 eV of the Fermi energy. The top panels show the total relaxation time, accounting for both the e - e and the e -ph interactions. The bottom panels show the scattering rate, expressed as the imaginary part of the self-energy, $\text{Im}\Sigma$, for the e - e and e -ph interactions. E_F is the zero of the energy axis, as shown by the dashed line. Electrons (holes) possess positive (negative) energies, and the shaded area indicates the energy window spanned by the d states.

two scattering mechanisms leads to total relaxation times with a broad maximum centred at E_F and a rapid decay 1–2 eV away from E_F as the parabolic e – e scattering rate becomes dominant (see Fig. 3). In the energy window spanned by the d bands, the large increase in the electronic DOS causes very strong e –ph scattering, and the localized nature of the d states leads to deviations from the free-electron parabolic trends for e – e scattering. The total relaxation times show that hot holes arising from d states lose energy on a sub-5-fs time scale, thus making such hot d holes challenging to extract before thermalization. Finally, our calculations yield comparable time scale and scattering rate for e –ph and e – e scattering, in contrast with the common heuristic assumption that scattering by phonons occurs on a much slower time scale¹⁴. We thus conclude that previous models including only e – e scattering¹⁴ and missing the important e –ph component are incomplete for understanding HC relaxation times and photoemission linewidths in noble metals.

To validate our results, we compare our relaxation times at the Fermi energy in Au and Ag with those inferred from carrier transport measurements. Kopitzki³⁵ combined the Drude model with room temperature resistivity measurements, and obtained semiempirical relaxation times of 29 fs for Au and 41 fs for Ag, in close agreement with those obtained by Ashcroft and Mermin³⁶ with the same approach. Averaging our relaxation times over a small energy window around E_F yields relaxation times of 24 fs for Au and 27 fs for Ag. While the agreement is excellent for Au and good for Ag, our data shows a large spread in the relaxation times at E_F , a feature not captured by the Drude model and stemming from the Fermi surface anisotropy. It is therefore puzzling that the Drude relaxation times^{33,35} are widely used in plasmonics^{4,5}, given that their physical meaning is questionable

when applied to non-equilibrium situations involving SPPs. We conclude that further investigation on this point is necessary, and remark that ours is the first truly *ab initio* determination of the relaxation times on the Fermi surface of noble metals, to be discussed in detail elsewhere.

HC MFP. Next, we turn our attention to HC transport. Figure 4 shows the MFP for the three crystallographic directions [100], [110] and [111] within 5 eV of the Fermi energy. The MFPs are obtained by multiplying the total relaxation times by the carrier velocities computed from the slope of the GW bandstructures (see Methods). Our computed MFPs are of the order 10–40 nm in the energy window spanned by the s states, and much shorter (1–5 nm) for the d states. The MFPs of the s states exhibit an energy dependence with the volcano shape also seen in the relaxation times, with deviations coming from the different band velocities along each direction. The MFPs of hot holes with 1–2 eV energy are nearly isotropic, while the MFPs of hot holes with <1 eV energy are longer for the [100] and [110] directions. The MFPs of hot electrons are highly anisotropic due to the absence of electronic states up to 4 eV above E_F in the [111] direction and at energy >1–2 eV in the [100] direction. The longest hot electron MFPs are in the [110] direction up to 4 eV above E_F . We note that the energy derivative of the MFPs at E_F is negative, consistent with the positive thermopower in Au and Ag³⁷. In the energy window spanned by the d states, the MFPs are of order 5 nm in the [111] direction and 1 nm in the other directions, and thus highly anisotropic with longer MFPs in the [111] direction. The isotropic MFPs for s holes and anisotropic for d holes are consistent with findings in ballistic electron energy microscopy experiments in noble metals, where it was found that d holes injected by a scanning

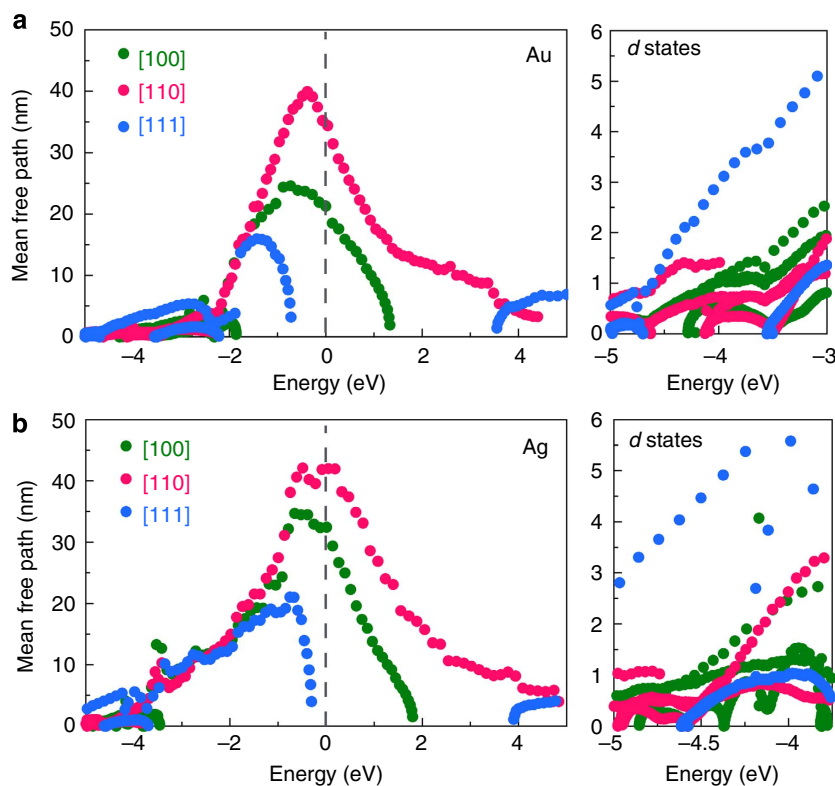


Figure 4 | Hot carrier mean free path. The hot carrier MFPs along the [100], [110] and [111] crystallographic directions in Au (a) and Ag (b). The MFPs for the d states are expanded in the right panels.

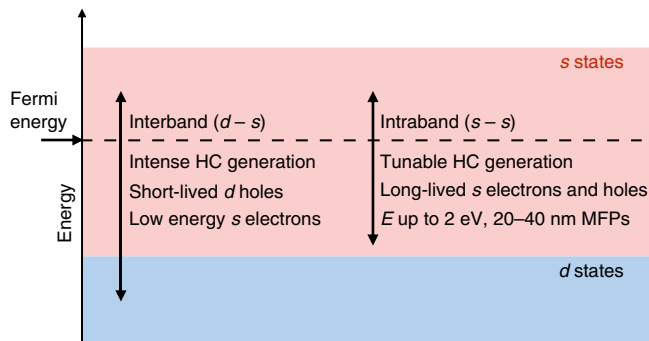


Figure 5 | Regimes for hot carrier generation and transport in noble metals. The graph shows two HC generation regimes, for intraband ($s-s$) and interband ($d-s$) transitions induced by SPPs with energy $E_p < E_{\text{int}}$ or $E_p > E_{\text{int}}$, respectively. The regime with $E_p < E_{\text{int}}$ offers a trade-off between optimal HC generation, moderate HC energies up to ~ 2 eV, and longer MFPs and relaxation times than the interband regime. The dashed line indicates the Fermi energy.

tunneling microscope tip propagate along narrow cones and span small volumes, while s holes span large volumes isotropically³⁸.

Discussion

The data obtained so far allow us to formulate optimal conditions to generate HCs and extract or utilize them before thermalization. Figure 5 summarizes HC generation and transport in Au and Ag by defining two regimes for HC generation from intraband ($E_p < E_{\text{int}}$) and interband ($E_p > E_{\text{int}}$) transitions induced by SPP decay. The energy distribution, relaxation time and MFP of the generated HCs are dramatically different in these two regimes. For $E_p < E_{\text{int}}$, the HCs consist of s holes and s electrons with average energies up to $E_{\text{int}}/2$ (that is, 1–2 eV) generated by weakly damped SPPs due to the small FM-JDOS values. HC generation can be optimized by matching the energy and momentum of the SPP to the FM-JDOS intraband peak described above and shown in Fig. 1. The HCs in this energy range possess relatively long MFPs of ~ 10 –40 nm, and can thus be extracted before thermalization over ~ 50 nm lengths in ideally pure samples. This regime is thus optimal for HC generation and extraction. For hot electrons, we predict that the (110) surface would be best suited to extract HCs due to the longer MFPs in the [110] direction. For hot holes with ~ 1 –2 eV energy, the (100) and (110) surfaces are predicted to enable optimal extraction. Our results further suggest that Ag may be better suited than Au for HC generation due to the wider energy window for intraband transitions, thus motivating studies of HC generation from SPPs in Ag. On the other hand, the strong SPP damping regime with $E_p > E_{\text{int}}$ is non-optimal for extracting HCs, since in spite of strong HC generation the SPP energy is mostly transferred to short-lived hot d holes with ~ 1 nm MFP, while hot electrons possess only low energy of < 1 eV. These conditions prevent HC extraction in this regime, unless a nanometer-thick thin film or nanostructured metal is employed.

Our data further show that nanostructuring the metal to sub-10-nm size is not required to obtain energetic HCs, and not needed to extract them unless HCs with > 2 eV energy are desired. In addition, for SPP with energy lower than E_{int} , the SPP energy is equally distributed between hot electrons and holes, and energy loss is dominated by e -ph rather than Auger scattering. These findings address the misconceptions emerged in recent work as outlined above, and show that optimal HC generation is possible by carefully tuning the SPP energy and wavevector at noble metal-dielectric interfaces. Finally, we note that our

approach is for now limited to SPP at metal-dielectric interfaces, while localized surface plasmons in nanostructures need to be treated differently due to their localized nature³⁹. We believe that the method presented in this work can be extended to study HC generation from localized surface plasmon modes, which will be the subject of future investigation.

In summary, we establish a theoretical framework to study SPP damping and HC generation and transport on the same footing using many-body perturbation theory. Our first-principles calculations can accurately describe SPP-induced generation and ultrafast scattering of HCs in noble metals of use in plasmonics, photocatalysis, photovoltaics and optoelectronics. Our work highlights the interplay of the s and d bands in noble metals, and prescribe optimal experimental conditions for generation and extraction of HCs. Our approach paves the way to first-principles calculations of SPP losses in materials⁴.

Methods

First-principles calculations. We carry out *ab initio* calculations on Au, Ag and Cu in the face-centred cubic structure with lattice parameters of 7.72, 7.71 and 6.82 bohr, respectively. The ground-state electronic structure is computed within the local density approximation (LDA)⁴⁰ of DFT using the QUANTUM ESPRESSO code⁴¹. We use norm-conserving pseudopotentials (which include semicore s and p states) to describe the core-valence interaction⁴², together with a plane-wave basis set with kinetic energy cutoff of 60 Ry for Ag and Au, and 240 Ry for Cu. The $e-e$ (that is, GW) and e -ph self-energies are computed separately, and then combined together.

The real and imaginary parts of the GW self-energy¹⁹ are computed using the Berkeley-GW code⁴³. The real part $\text{Re}(\Sigma_{n,\mathbf{k}}^{\text{GW}})$ is obtained with a generalized plasmon-pole calculation¹⁹ on a $12 \times 12 \times 12$ \mathbf{k} -point grid and then interpolated using Wannier functions (see below). Kinetic energy cutoffs of 50 Ry and 120 Ry are used, respectively, for the screened and bare Coulomb interactions, together with $\sim 1,000$ empty bands and a $8 \times 8 \times 8$ \mathbf{q} -point grid for the dielectric screening. The DFT eigenvalues $\epsilon_{n,\mathbf{k}}$ are corrected with GW self-energies to obtain the quasiparticle bandstructures, $E_{n,\mathbf{k}} = \epsilon_{n,\mathbf{k}} + \text{Re}(\Sigma_{n,\mathbf{k}}^{\text{GW}})$, used in all calculations in this work. The imaginary part of the GW self-energy, $\text{Im}(\Sigma_{n,\mathbf{k}}^{\text{GW}})$, is computed using full-frequency GW calculations⁴³. Here $\text{Im}(\Sigma_{n,\mathbf{k}}^{\text{GW}})$ are evaluated on-shell at the LDA eigenvalues $\epsilon_{n,\mathbf{k}}$, and then plotted versus the corresponding GW eigenvalues $E_{n,\mathbf{k}}$. We use $20 \times 20 \times 20$ \mathbf{k} -point grids to converge $\text{Im}(\Sigma_{n,\mathbf{k}}^{\text{GW}})$ within ~ 10 meV. In addition, we use kinetic energy cutoffs of 20 Ry and 120 Ry, respectively, for the screened and bare Coulomb interactions, together with ~ 100 empty bands and a $20 \times 20 \times 20$ \mathbf{q} -point grid for the dielectric screening.

The imaginary part of the e -ph self-energy, $\text{Im}(\Sigma_{n,\mathbf{k}}^{e-\text{ph}})$, is computed using the EPW code²⁰. We compute the self-consistent potential and Kohn-Sham states on a $12 \times 12 \times 12$ \mathbf{k} -point grid using DFT, and lattice-dynamical properties with DFPT⁴⁴ on a $4 \times 4 \times 4$ \mathbf{q} -point grid. The e -ph matrix elements are first computed on these coarse grids, and then obtained on significantly finer grids using an interpolation procedure based on Wannier functions as implemented in the EPW code^{20,24}. Maximally localized Wannier functions⁴⁵ are obtained starting from five d orbitals on the metal atoms and two s orbitals, each in a tetrahedral interstitial point of the face-centred cubic lattice, for a total of seven wannierized bands (we skip the semicore states). The Wannier interpolated and DFT bandstructures agree within 5 meV in an energy window up to 5 eV above the Fermi energy. The Bloch-to-Wannier rotation matrices are then used to interpolate the GW bandstructures, which are used to compute $\text{Im}(\Sigma_{n,\mathbf{k}}^{e-\text{ph}})$. The fine grids for the calculation of $\text{Im}(\Sigma_{n,\mathbf{k}}^{e-\text{ph}})$ consist in a $40 \times 40 \times 40$ \mathbf{k} -point grid, and up to 1 million random phonon \mathbf{q} -points in the BZ. Such fine grids allow us to converge $\text{Im}(\Sigma_{n,\mathbf{k}}^{e-\text{ph}})$ within 1 meV. Further details of our approach to compute the e -ph self-energy are discussed in ref. 21.

The FM-JDOS calculations are carried out using Wannier interpolated GW bandstructures, a $100 \times 100 \times 100$ \mathbf{k} -point grid and a small Lorentzian broadening $\eta \approx 25$ meV. The energy distribution of the generated HCs in Fig. 2 are obtained by counting the momentum- and energy-conserving transitions in equation (2) as a function of occupied band (for hot holes) and empty band (for hot electrons) quasiparticle energies.

The MFPs are obtained using velocities computed from the slope of the GW bandstructure along the given high-symmetry direction, together with total relaxation times $\tau_{n,\mathbf{k}}$ combining the e -ph and $e-e$ relaxation times with Matthiessen's rule. The total relaxation times are obtained from $\text{Im}(\Sigma_{n,\mathbf{k}}^{e-\text{ph}})$ computed on grids of over 100 \mathbf{k} points along each high-symmetry direction, and $\text{Im}(\Sigma_{n,\mathbf{k}}^{\text{GW}})$ computed on a $20 \times 20 \times 20$ \mathbf{k} -grid and then averaged over \mathbf{k} points to generate an energy-dependent $\text{Im}(\Sigma_{n,\mathbf{k}}^{\text{GW}})$ evaluated at each energy $E_{n,\mathbf{k}}$ for which a calculation of $\text{Im}(\Sigma_{n,\mathbf{k}}^{e-\text{ph}})$ is performed.

Derivation of the coupling matrix elements. The derivation of the plasmon-electron matrix element in Table 1 within the Landau damping approximation is given in ref. 26 and will not be discussed. Here we derive the coupling matrix elements for the photon–electron and SPP–electron interactions given in Table 1. We use SI units throughout the derivations. The photon case is well known²⁷ and discussed here as a starting point for the SPP case. The second quantized vector potential $\hat{\mathbf{A}}(\mathbf{r}, t)$ for a photon with momentum $\hbar\mathbf{q}_p$, energy $E_{q_p} = \hbar\omega_p$ and polarization unit vector \mathbf{e}_{q_p} can be obtained by associating the amplitude with a destruction operator \hat{a}_{q_p} and its complex conjugate with a creation operator $\hat{a}_{q_p}^\dagger$. We use the vector potential with unit amplitude since we are interested in the coupling matrix element, and thus the transition rate per unit of incident power. It reads²⁷:

$$\hat{\mathbf{A}}_{q_p}(\mathbf{r}, t) = f_{q_p} \left[\mathbf{e}_{q_p} \hat{a}_{q_p} e^{i(\mathbf{q}_p \cdot \mathbf{r} - \omega_p t)} + \mathbf{e}_{q_p}^* \hat{a}_{q_p}^\dagger e^{-i(\mathbf{q}_p \cdot \mathbf{r} - \omega_p t)} \right] \quad (4)$$

where f_{q_p} is a normalization constant. Using the Coulomb gauge $\nabla \cdot \hat{\mathbf{A}}_{q_p} = 0$, the second quantized electric field can be obtained from $\hat{\mathbf{E}} = -\partial \hat{\mathbf{A}} / \partial t$.

The normalization constant f_{q_p} is determined by equating the energy of the classical and quantized fields. The classical (cycle averaged) energy $\langle U_{q_p} \rangle$ for a photon with momentum $\hbar\mathbf{q}_p$ in a homogeneous and isotropic material with dielectric constant ϵ is $\langle U_{q_p} \rangle = V \epsilon E_{q_p}^2 / 2$, where V is the volume of the material. This energy needs to be equal to its quantum counterpart, $\hbar\omega_{q_p} (n_{q_p} + 1/2)$. In addition, $\langle U_{q_p} \rangle$ can be obtained by averaging the quantized electric field $\hat{\mathbf{E}}_{q_p} = -\partial \hat{\mathbf{A}}_{q_p} / \partial t$ over the quantum state $|n_{q_p}\rangle$ with n_{q_p} photons. We get:

$$\langle U_{q_p} \rangle = \hbar\omega_{q_p} \left(n_{q_p} + \frac{1}{2} \right) \quad (5)$$

$$\langle U_{q_p} \rangle = V \epsilon \frac{\langle n_{q_p} | \hat{\mathbf{E}}_{q_p}^2 | n_{q_p} \rangle}{2} = 2V \epsilon \omega_{q_p}^2 f_{q_p}^2 \left(n_{q_p} + \frac{1}{2} \right) \quad (6)$$

where in the last equation we used the time derivative of equation (4) the electric field and the commutation rules for boson creation and annihilation operators, $[\hat{a}_{q_p}, \hat{a}_{q_p}^\dagger] = 1$. Equating equations (5) and (6) yields a normalization constant $f_{q_p} = [\hbar / (2V\epsilon\omega_{q_p})]^{1/2}$, and a vector potential:

$$\hat{\mathbf{A}}_{q_p}(\mathbf{r}, t) = \left(\frac{\hbar}{2V\epsilon\omega_{q_p}} \right)^{1/2} \left[\mathbf{e}_{q_p} \hat{a}_{q_p} e^{i(\mathbf{q}_p \cdot \mathbf{r} - \omega_p t)} + \mathbf{e}_{q_p}^* \hat{a}_{q_p}^\dagger e^{-i(\mathbf{q}_p \cdot \mathbf{r} - \omega_p t)} \right] \quad (7)$$

The photon–electron interaction Hamiltonian is $H_{int} = \frac{e}{m} \hat{\mathbf{A}}_{q_p} \cdot \hat{\mathbf{p}}$, as obtained by expanding the kinetic energy $|\hat{\mathbf{p}} + e\hat{\mathbf{A}}_{q_p}|^2 / (2m)$ to first order in the vector potential. The second quantized fields associated with the electronic Bloch states are:

$$\hat{\Psi}(\mathbf{r}) = \frac{1}{\sqrt{V}} \sum_{n,\mathbf{k}} u_{n,\mathbf{k}}(\mathbf{r}) e^{i\mathbf{k} \cdot \mathbf{r}} \hat{c}_{n,\mathbf{k}}$$

$$\hat{\Psi}^\dagger(\mathbf{r}) = \frac{1}{\sqrt{V}} \sum_{n',\mathbf{k}'} u_{n',\mathbf{k}'}^*(\mathbf{r}) e^{-i\mathbf{k}' \cdot \mathbf{r}} \hat{c}_{n',\mathbf{k}'}^\dagger$$

where $\hat{c}_{n,\mathbf{k}}$ and $\hat{c}_{n',\mathbf{k}'}^\dagger$ are, respectively, fermion annihilation and creation operators satisfying the anticommutation rule $\hat{c}_{n,\mathbf{k}} \hat{c}_{n',\mathbf{k}'}^\dagger + \hat{c}_{n',\mathbf{k}'}^\dagger \hat{c}_{n,\mathbf{k}} = \delta_{n,n'} \delta_{\mathbf{k},\mathbf{k}'}$. The second quantized interaction Hamiltonian can be written as:

$$H' = \int d\mathbf{r} \Psi^\dagger(\mathbf{r}) H_{int} \Psi(\mathbf{r}) = \frac{e}{m} \sum_{\substack{n,n' \\ \mathbf{k},\mathbf{k}'}} \left(\frac{\hbar}{2V\epsilon\omega_{q_p}} \right)^{1/2} \left\{ \left[\frac{1}{V} \int d\mathbf{r} e^{i[(\mathbf{k}-\mathbf{k}'+\mathbf{q}_p) \cdot \mathbf{r} - \omega_{q_p} t]} u_{n',\mathbf{k}'}^*(\mathbf{r}) (\mathbf{e}_{q_p} \cdot \hat{\mathbf{p}}) u_{n,\mathbf{k}}(\mathbf{r}) \right] \hat{c}_{n',\mathbf{k}'}^\dagger \hat{c}_{n,\mathbf{k}} \hat{a}_{q_p} \right. \\ \left. + \left[\frac{1}{V} \int d\mathbf{r} e^{-i[(\mathbf{k}'-\mathbf{k}+\mathbf{q}_p) \cdot \mathbf{r} - \omega_{q_p} t]} u_{n',\mathbf{k}'}^*(\mathbf{r}) (\mathbf{e}_{q_p}^* \cdot \hat{\mathbf{p}}) u_{n,\mathbf{k}}(\mathbf{r}) \right] \hat{c}_{n,\mathbf{k}}^\dagger \hat{c}_{n',\mathbf{k}'} \hat{a}_{q_p}^\dagger \right\}$$

Crystal momentum conservation requires $\mathbf{k}' = \pm \mathbf{q}_p$, where the plus and minus sign apply for the first and second integral above, respectively. The interacting Hamiltonian becomes:

$$H' = \sum_{n,n'} \left(\frac{\hbar e^2}{2Vm^2\epsilon\omega_{q_p}} \right)^{1/2} \left[\mathbf{e}_{q_p} \cdot \mathbf{p}_{n,n'}(\mathbf{q}_p) e^{-i\omega_{q_p} t} \hat{c}_{n',\mathbf{k}+\mathbf{q}_p}^\dagger \hat{c}_{n,\mathbf{k}} \hat{a}_{q_p} + h.c. \right] \quad (8)$$

where $h.c.$ is the hermitian conjugate, and we defined the momentum matrix element as the integral $\mathbf{p}_{n,n'}(\mathbf{q}_p) = \frac{1}{\Omega} \int d\mathbf{r} u_{n',\mathbf{k}+\mathbf{q}_p}^*(\mathbf{r}) (\mathbf{e}_{q_p} \cdot \hat{\mathbf{p}}) u_{n,\mathbf{k}}(\mathbf{r})$ over the unit cell volume Ω , as commonly used in the study of optical absorption⁴⁶. We obtain the photon decay rate Γ_{q_p} by applying Fermi's golden rule. Photon absorption occurs with a transition rate $\Gamma_{q_p}^{\text{abs}}$ between an initial state $|0; 1_{q_p}\rangle$, consisting of the ground electronic state at room temperature and one photon with momentum \mathbf{q}_p , and a final state $|S; 0\rangle$ with an electron in the Bloch state $|n', \mathbf{k} + \mathbf{q}_p\rangle$,

a hole in the Bloch state $|n, \mathbf{k}\rangle$ and no photons. The absorption rate is given by:

$$\Gamma_{q_p}^{\text{abs}} = \frac{2\pi}{\hbar} |\langle S; 0 | H | 0; 1_{q_p} \rangle|^2 \delta(\hbar\omega_{q_p} + E_{n,\mathbf{k}} - E_{n',\mathbf{k}+\mathbf{q}_p}) \quad (9)$$

Only the first term in equation (8) gives a non-zero contribution, and we get:

$$\Gamma_{q_p}^{\text{abs}} = \frac{2\pi}{\hbar} \sum_{n,n'} \left(\frac{\hbar e^2}{2Vm^2\epsilon\omega_{q_p}} \right) |\mathbf{e}_{q_p} \cdot \mathbf{p}_{n,n'}(\mathbf{q}_p)|^2 f_{n',\mathbf{k}+\mathbf{q}_p} (1 - f_{n,\mathbf{k}}) \delta(\hbar\omega_{q_p} + E_{n,\mathbf{k}} - E_{n',\mathbf{k}+\mathbf{q}_p})$$

The inverse process of photon emission from an initial state $|S; 0\rangle$ to a final state $|0; 1_{q_p}\rangle$ has a rate $\Gamma_{q_p}^{\text{em}}$ given by:

$$\Gamma_{q_p}^{\text{em}} = \frac{2\pi}{\hbar} \sum_{n,n'} \left(\frac{\hbar e^2}{2Vm^2\epsilon\omega_{q_p}} \right) |\mathbf{e}_{q_p} \cdot \mathbf{p}_{n,n'}(\mathbf{q}_p)|^2 f_{n',\mathbf{k}+\mathbf{q}_p} (1 - f_{n,\mathbf{k}}) \delta(\hbar\omega_{q_p} + E_{n,\mathbf{k}} - E_{n',\mathbf{k}+\mathbf{q}_p})$$

The net rate $\Gamma_{q_p} = \Gamma_{q_p}^{\text{abs}} - \Gamma_{q_p}^{\text{em}}$ is the decay rate of a photon with momentum $\hbar\mathbf{q}_p$ and energy $E_p = \hbar\omega_{q_p}$ into a hot electron–hole pair. Writing the delta function as a Lorentzian with broadening $\eta \rightarrow 0$, namely $\delta(x) = \frac{1}{\pi} \text{Im} \frac{1}{x - i\eta}$, we obtain the decay rate as:

$$\Gamma_{q_p} = \frac{2\pi}{\hbar} \sum_{n,n'} \left(\frac{\hbar e^2}{2Vm^2\epsilon\omega_{q_p}} \right) |\mathbf{e}_{q_p} \cdot \mathbf{p}_{n,n'}(\mathbf{q}_p)|^2 \frac{1}{\pi} \text{Im} \left[\frac{f_{n,\mathbf{k}} - f_{n',\mathbf{k}+\mathbf{q}_p}}{E_p(q_p) - (E_{n',\mathbf{k}+\mathbf{q}_p} - E_{n,\mathbf{k}}) - i\eta} \right] \quad (10)$$

This expression is identical to equation (1) with the squared coupling matrix elements $|g_{n,n',\mathbf{k}}^{\text{PH}}|^2$ in Table 1. Since for photons $\mathbf{q}_p \approx 0$ compared with the size of the BZ, the squared coupling matrix elements are:

$$|g_{n,n',\mathbf{k}}^{\text{PH}}|^2 = \left(\frac{e\hbar}{m} \right)^2 \frac{1}{2\epsilon E_p V} |\mathbf{e}_{q_p} \cdot \mathbf{p}_{n,n'}(\mathbf{q}_p = 0)|^2$$

as shown in Table 1. We note that for slowly varying matrix elements in the BZ, the photon decay rate is proportional to the zero-momentum JDOS commonly used in the theory of the optical properties of solids⁴⁶, that is, $\Gamma_{q_p}(\mathbf{q}_p = 0, E_p)$.

The derivation of the coupling matrix elements $|g_{n,n',\mathbf{k}}^{\text{SPP}}|^2$ for SPPs follows similar steps to the photon case discussed above. Following Nkoma *et al.*²⁸, we study the case of a SPP generated at the interface between a metal with frequency-dependent dielectric function $\epsilon_M(\omega)$ and a dielectric material with frequency-independent dielectric constant ϵ_D . A similar second quantization procedure was also developed by Elson *et al.*²⁹. It is well known that the intensity of the SPP wave decays exponentially in the direction perpendicular to the dielectric-metal interface^{1,30}. To study HC generation, we focus here on the SPP field in the metal, and its associated vector potential. Since SPP possess transverse magnetic polarization, their wavevector can be taken as real in the xy plane—here the plane of the metal–dielectric interface, with area A —and purely imaginary in the z direction normal to the interface. With the metal in the $z > 0$ space and the x -axis parallel to the propagation direction of the SPP wave, the SPP wavevector is $\mathbf{q}_p = (q_{p,x}, 0, iq_{p,z})$. While in the main text, we define $\mathbf{q}_p = (q_{p,x}, 0, 0)$ as the propagation wavevector in the xy plane, for the purpose of this derivation \mathbf{q}_p is defined differently. Here $q_{p,x}$ is a real positive number since the electron-induced dissipation effects we aim to find would be encoded in its imaginary part, and $q_{p,z}$ is related to the decay length L_z of the SPP field intensity by³⁰ $q_{p,z} = 1/(2L_z)$. The relative magnitude of the components of \mathbf{q}_p are determined by the dielectric properties of the metal and dielectric^{1,30}, which impose $q_{p,x}/q_{p,z} = |\sqrt{\epsilon_D/\epsilon_M}|$ (here, the real parts of ϵ_D and ϵ_M should be employed for consistency). Similarly, the components of the unit polarization vector $\mathbf{e}_{q_p}^{\text{TM}}$ are related by³⁰ $(\mathbf{e}_{q_p}^{\text{TM}})_x / (\mathbf{e}_{q_p}^{\text{TM}})_z = |\sqrt{\epsilon_D/\epsilon_M}|$.

The vector potential of the SPP wave in the metal, with unit amplitude as in the photon case, can be written in second quantized form as:

$$\hat{\mathbf{A}}_{q_p}(\mathbf{r}, t) = f_{q_p} \left[\mathbf{e}_{q_p}^{\text{TM}} \hat{a}_{q_p} e^{i(\mathbf{q}_p \cdot \mathbf{r} - \omega_p t)} + (\mathbf{e}_{q_p}^{\text{TM}})^* \hat{a}_{q_p}^\dagger e^{-i(\mathbf{q}_p \cdot \mathbf{r} - \omega_p t)} \right] \quad (11)$$

where, as in the photon case, the normalization constant f_{q_p} can be determined by energy considerations. We write the classical electric field associated with the SPP in the metal as $\mathbf{E} = \mathbf{E}_0 e^{i(\mathbf{q}_p \cdot \mathbf{r} - \omega_p t)}$. Using a result in ref. 28, the cycle-averaged energy in the SPP field—which accounts for contributions from both the field in the dielectric and the metal—can be written as $\langle U_{q_p} \rangle = A \epsilon_{\text{eff}} |E_0|^2 / (4q_{p,z})$, where we defined an effective dielectric constant:

$$\epsilon_{\text{eff}}(\omega) = \frac{\epsilon_M(\omega)(\epsilon_D + \epsilon_M(\omega))}{\epsilon_D} + \frac{\omega}{2} \frac{\partial \epsilon_M(\omega)}{\partial \omega}$$

We use the correspondence principle for a quantum state $|n_{q_p}\rangle$ with n_{q_p} SPP quanta. Similar to the photon case, the total energy in the SPP mode $\hbar\omega_{q_p} (n_{q_p} + 1/2)$ can be equated to its classical counterpart, while the square modulus of the electric field $|E_{q_p}|^2$ can be replaced with its quantum mechanical average $\langle n_{q_p} | \hat{\mathbf{E}}_{q_p}^2 | n_{q_p} \rangle$, with $\hat{\mathbf{E}}_{q_p} = -\partial \hat{\mathbf{A}}_{q_p} / \partial t$. We obtain the two equations:

$$\langle U_{q_p} \rangle = \hbar\omega_{q_p} \left(n_{q_p} + \frac{1}{2} \right) \quad (12)$$

$$\langle U_{q_p} \rangle = \frac{\epsilon_{\text{eff}} A}{4q_{p,z}} \langle n_{q_p} | \hat{\mathbf{E}}_{q_p}^2 | n_{q_p} \rangle e^{(2q_{p,z})z} = \left(\frac{A}{q_{p,z}} \right) \epsilon_{\text{eff}} \omega_{q_p}^2 f_{q_p}^2 \left(n_{q_p} + \frac{1}{2} \right) \quad (13)$$

By equating equations (12) and (13), and using $q_{p,z} = 1/(2L_z)$, we obtain the

normalization constant $f_{\mathbf{q}_p} = [\hbar / (2AL_z \epsilon_{\text{eff}} \omega_{\mathbf{q}_p})]^{1/2}$, and thus the SPP vector potential:

$$\hat{\mathbf{A}}_{\mathbf{q}_p}(\mathbf{r}, t) = \left(\frac{\hbar}{2AL_z \epsilon_{\text{eff}} \omega_{\mathbf{q}_p}} \right)^{1/2} \left[\mathbf{e}_{\mathbf{q}_p}^{\text{TM}} \hat{a}_{\mathbf{q}_p} e^{i(\mathbf{q}_p \cdot \mathbf{r} - \omega_{\mathbf{q}_p} t)} + \left(\mathbf{e}_{\mathbf{q}_p}^{\text{TM}} \right)^* \hat{a}_{\mathbf{q}_p}^\dagger e^{-i(\mathbf{q}_p \cdot \mathbf{r} - \omega_{\mathbf{q}_p} t)} \right] \quad (14)$$

This vector potential is similar to the photon case, equation (7). The key differences are the decay in the z direction for the SPP field, which introduces an effective SPP volume AL_z in the vector potential, the appearance of an effective dielectric constant for the medium and the fact that the polarization is transverse magnetic with a direction imposed by the properties of the metal and dielectric material.

Since the form of the SPP vector potential is completely analogous to the one for photons, the decay rate of SPPs to hot electron-hole pairs can be carried out following the same steps as in the photon case discussed above, with the substitutions $V \rightarrow AL_z$, $\mathbf{e}_{\mathbf{q}_p} \rightarrow \mathbf{e}_{\mathbf{q}_p}^{\text{TM}}$, and allowing for a finite momentum $\mathbf{1}_{\mathbf{q}_p}$ with magnitude $q_p = (E_p / \hbar c) \sqrt{(\epsilon_M \epsilon_D) / (\epsilon_M + \epsilon_D)}$. This leads to the SPP-electron coupling matrix element in Table 1:

$$\left| g_{n,n',\mathbf{k}}^{\text{SPP}}(\mathbf{q}_p, E_p) \right|^2 = \left(\frac{e\hbar}{m} \right)^2 \frac{1}{2\epsilon_{\text{eff}} E_p AL_z} \left| \mathbf{e}_{\mathbf{q}_p}^{\text{TM}} \cdot \mathbf{p}_{n,n',\mathbf{k}}(\mathbf{q}_p) \right|^2 \quad (15)$$

References

- Barnes, W. L., Dereux, A. & Ebbesen, T. W. Surface plasmon subwavelength optics. *Nature* **424**, 824–830 (2003).
- Tame, M. *et al.* Quantum plasmonics. *Nat. Phys.* **9**, 329–340 (2013).
- Fakonas, J. S., Lee, H., Kelaïta, Y. A. & Atwater, H. A. Two-plasmon quantum interference. *Nat. Photonics* **8**, 317–320 (2014).
- West, P. R. *et al.* Searching for better plasmonic materials. *Laser Photonics Rev.* **4**, 795–808 (2010).
- Khurgin, J. B. & Boltasseva, A. Reflecting upon the losses in plasmonics and metamaterials. *MRS Bull.* **37**, 768–779 (2012).
- Brongersma, M. L., Halas, N. J. & Nordlander, P. Plasmon-induced hot carrier science and technology. *Nat. Nanotechnol.* **10**, 25–34 (2015).
- Clavero, C. Plasmon-induced hot-electron generation at nanoparticle/metal-oxide interfaces for photovoltaic and photocatalytic devices. *Nat. Photonics* **8**, 95–103 (2014).
- Chalabi, H. & Brongersma, M. L. Plasmonics: harvest season for hot electrons. *Nat. Nanotechnol.* **8**, 229–230 (2013).
- Tisdale, W. A. *et al.* Hot-electron transfer from semiconductor nanocrystals. *Science* **328**, 1543–1547 (2010).
- Mukherjee, S. *et al.* Hot electrons do the impossible: Plasmon-induced dissociation of H_2 on Au. *Nano Lett.* **13**, 240–247 (2012).
- Linic, S., Christopher, P. & Ingram, D. B. Plasmonic-metal nanostructures for efficient conversion of solar to chemical energy. *Nat. Mater.* **10**, 911–921 (2011).
- Frischkorn, C. & Wolf, M. Femtochemistry at metal surfaces: nonadiabatic reaction dynamics. *Chem. Rev.* **106**, 4207–4233 (2006).
- Vallée, F. Ultrafast spectroscopy of metals. *C. R. Acad. Sci. Ser. IV Phys.* **2**, 1469–1482 (2001).
- Echenique, P., Pitarke, J., Chulkov, E. & Rubio, A. Theory of inelastic lifetimes of low-energy electrons in metals. *Chem. Phys.* **251**, 1–35 (2000).
- Sundaraman, R., Narang, P., Jermyn, A. S., Goddard, III W. A. & Atwater, H. A. Theoretical predictions for hot-carrier generation from surface plasmon decay. *Nat. Commun.* **5**, 5788 (2014).
- Manjavacas, A., Liu, J. G., Kulkarni, V. & Nordlander, P. Plasmon-induced hot carriers in metallic nanoparticles. *ACS Nano* **8**, 7630–7638 (2014).
- Govorov, A. O., Zhang, H. & Gun'ko, Y. K. Theory of photoinjection of hot plasmonic carriers from metal nanostructures into semiconductors and surface molecules. *J. Phys. Chem. C* **117**, 16616–16631 (2013).
- Martin, R. M. *Electronic Structure: Basic Theory and Practical Methods* (Cambridge Univ. Press, 2008).
- Hybertsen, M. S. & Louie, S. G. Electron correlation in semiconductors and insulators: Band gaps and quasiparticle energies. *Phys. Rev. B* **34**, 5390 (1986).
- Noffsinger, J. *et al.* EPW: A program for calculating the electron-phonon coupling using maximally localized Wannier functions. *Comp. Phys. Commun.* **181**, 2140–2148 (2010).
- Bernardi, M., Vigil-Fowler, D., Lischner, J., Neaton, J. B. & Louie, S. G. Ab initio study of hot carriers in the first picosecond after sunlight absorption in Silicon. *Phys. Rev. Lett.* **112**, 257402 (2014).
- Mahan, G. D. *Many-Particle Physics* (Springer, 2000).
- Schrieffer, J. R. *Theory of superconductivity, Advanced book classics* (Perseus Books, 1999).
- Giustino, F., Cohen, M. L. & Louie, S. G. Electron-phonon interaction using Wannier functions. *Phys. Rev. B* **76**, 165108 (2007).
- Grigorenko, A., Polini, M. & Novoselov, K. Graphene plasmonics. *Nat. Photonics* **6**, 749–758 (2012).
- Pines, D. & Schrieffer, J. R. Approach to equilibrium of electrons, plasmons, and phonons in quantum and classical plasmas. *Phys. Rev.* **125**, 804 (1962).

- Loudon, R. *The Quantum Theory of Light* (Oxford Univ. Press, 2000).
- Nkoma, J., Loudon, R. & Tilley, D. Elementary properties of surface polaritons. *J. Phys. C* **7**, 3547–3559 (1974).
- Elson, J. M. & Ritchie, R. H. Photon interactions at a rough metal surface. *Phys. Rev. B* **4**, 4129–4138 (1971).
- Raether, H. *Surface Plasmons on Smooth and Rough Surfaces and on Gratings* (Springer, 1988).
- Zayats, A. V., Smolyaninov, I. I. & Maradudin, A. A. Nano-optics of surface plasmon polaritons. *Phys. Rep.* **408**, 131–314 (2005).
- Cooper, B. R., Ehrenreich, H. & Philipp, H. R. Optical properties of noble metals. *Phys. Rev.* **138**, A494–A507 (1965).
- Johnson, P. B. & Christy, R.-W. Optical constants of the noble metals. *Phys. Rev. B* **6**, 4370–4379 (1972).
- Paggel, J., Luh, D.-A., Miller, T. & Chiang, T.-C. Electronic-structure dependence of the electron-phonon interaction in Ag. *Phys. Rev. Lett.* **92**, 186803 (2004).
- Kopitzki, K. & Herzog, P. *Einführung in die Festkörperphysik* (Springer, 2007).
- Ashcroft, N. W. & Mermin, N. D. *Solid State Physics* (Saunders College, 1976).
- Bourassa, R., Wang, S. & Lengeler, B. Energy dependence of the Fermi surface and thermoelectric power of the noble metals. *Phys. Rev. B* **18**, 1533 (1978).
- Blanco-Rey, M., Alducin, M., Juaristi, J. & de Andres, P. Diffusion of hydrogen in Pd assisted by inelastic ballistic hot electrons. *Phys. Rev. Lett.* **108**, 115902 (2012).
- Pitarke, J., Silkin, V., Chulkov, E. & Echenique, P. Theory of surface plasmons and surface-plasmon polaritons. *Rep. Prog. Phys.* **70**, 1 (2007).
- Perdew, J. P. & Zunger, A. Self-interaction correction to density-functional approximations for many-electron systems. *Phys. Rev. B* **23**, 5048 (1981).
- Giannozzi, P. *et al.* QUANTUM ESPRESSO: a modular and open-source software project for quantum simulations of materials. *J. Phys. Condens. Matter* **21**, 395502 (2009).
- Troullier, N. & Martins, J. L. Efficient pseudopotentials for plane-wave calculations. *Phys. Rev. B* **43**, 1993 (1991).
- Deslippe, J. *et al.* BerkeleyGW: A massively parallel computer package for the calculation of the quasiparticle and optical properties of materials and nanostructures. *Comp. Phys. Commun.* **183**, 1269–1289 (2012).
- Baroni, S., de Gironcoli, S., Dal Corso, A. & Giannozzi, P. Phonons and related crystal properties from density-functional perturbation theory. *Rev. Mod. Phys.* **73**, 515 (2001).
- Marzari, N. & Vanderbilt, D. Maximally localized generalized Wannier functions for composite energy bands. *Phys. Rev. B* **56**, 12847 (1997).
- Bassani, F. & Parravicini, G. P. *Electronic States and Optical Transitions in Solids* (Pergamon, 1975).

Acknowledgements

This research was supported by the SciDAC Program on Excited State Phenomena in Energy Materials funded by the US Department of Energy, Office of Basic Energy Sciences and by the Advanced Scientific Computing Research, under Contract No. DE-AC02-05CH11231 at Lawrence Berkeley National Laboratory which provided for algorithm and code developments and simulations; and by the National Science Foundation under grant DMR 10-1006184 which provided for basic theory and formalism. Work at the Molecular Foundry was supported by the Office of Science, Office of Basic Energy Sciences and by the US Department of Energy under Contract No. DE-AC02-05CH11231. This research used resources of the National Energy Research Scientific Computing Center, which is supported by the Office of Science of the US Department of Energy.

Author contributions

M.B. and J.M. carried out the calculations. All authors conceived the research and wrote the manuscript.

Additional information

Competing financial interests: The authors declare no competing financial interests.

Reprints and permission information is available online at <http://npg.nature.com/reprintsandpermissions/>

How to cite this article: Bernardi, M. *et al.* Theory and computation of hot carriers generated by surface plasmon polaritons in noble metals. *Nat. Commun.* 6:7044 doi:10.1038/ncomms8044 (2015).



This work is licensed under a Creative Commons Attribution 4.0 International License. The images or other third party material in this article are included in the article's Creative Commons license, unless indicated otherwise in the credit line; if the material is not included under the Creative Commons license, users will need to obtain permission from the license holder to reproduce the material. To view a copy of this license, visit <http://creativecommons.org/licenses/by/4.0/>