

Detectability of eccentric compact binary coalescences with advanced gravitational-wave detectors

M. Coughlin,^{1,*} P. Meyers,^{2,†} E. Thrane,^{3,4} J. Luo,⁵ and N. Christensen⁵

¹*Department of Physics, Harvard University, Cambridge, Massachusetts 02138, USA*

²*School of Physics and Astronomy, University of Minnesota, Minneapolis, Minnesota 55455, USA*

³*LIGO Laboratory, California Institute of Technology, MS 100-36, Pasadena, California 91125, USA*

⁴*School of Physics, Monash University, Clayton, Victoria 3800, Australia*

⁵*Physics and Astronomy, Carleton College, Northfield, Minnesota 55057, USA*

(Received 15 December 2014; published 12 March 2015)

Compact binary coalescences are a promising source of gravitational waves for second-generation interferometric gravitational-wave detectors such as advanced LIGO and advanced Virgo. While most binaries are expected to possess circular orbits, some may be eccentric, for example, if they are formed through dynamical capture. Eccentric orbits can create difficulty for matched filtering searches due to the challenges of creating effective template banks to detect these signals. In previous work, we showed how seedless clustering can be used to detect low-mass ($M_{\text{total}} \leq 10M_{\odot}$) compact binary coalescences for both spinning and eccentric systems, assuming a circular post-Newtonian expansion. Here, we describe a parametrization that is designed to maximize sensitivity to low-eccentricity ($0 \leq \epsilon \leq 0.6$) systems, derived from the analytic equations. We show that this parametrization provides a robust and computationally efficient method for detecting eccentric low-mass compact binaries. Based on these results, we conclude that advanced detectors will have a chance of detecting eccentric binaries if optimistic models prove true. However, a null observation is unlikely to firmly rule out models of eccentric binary populations.

DOI: [10.1103/PhysRevD.91.063004](https://doi.org/10.1103/PhysRevD.91.063004)

PACS numbers: 95.75.-z, 04.30.-w

I. INTRODUCTION

Compact binary coalescences (CBCs) of black holes and/or neutron stars are a likely source of gravitational waves (GWs) [1–3]. The GWs generated by CBCs, such as binary neutron stars (BNSs), neutron-star black holes (NSBHs), and binary black holes (BBHs), sweep upward in frequency and strain amplitude through the sensitive band of GW detectors such as LIGO [4], Virgo [5], GEO [6], and KAGRA [7]. The detection of GWs from CBCs will provide information about the populations of compact objects in the universe [8], elucidate the properties of strong field gravity, and provide a means to test general relativity [9].

Searches for CBCs almost entirely use matched filtering, which requires precise knowledge of astrophysical waveforms. Excess power searches are also used, especially for high-mass systems associated with shorter signals; see, e.g., Ref. [10]. Because CBCs are, for the most part, well-modeled systems, matched filtering provides an essentially optimal strategy for detecting compact binaries. Due to computational limitations, most CBC searches use template banks composed of nonspinning, noneccentric waveforms, which are less computationally challenging to implement than searches with complications such as spin and eccentricity. Up until now, there have been no dedicated matched

filtering searches for low mass binaries with low to moderate eccentricities. Huerta and Brown have shown that searches using waveforms that assume no eccentricity are significantly suboptimal above $\epsilon > 0.05$ [11]. They conclude that, in order to detect and study the rate of eccentric stellar-mass compact binaries in aLIGO, a search specifically targeting these systems will need to be constructed. Matched filtering searches would require eccentric template banks to avoid being significantly suboptimal. One method for overcoming these difficulties is building larger (and smarter) template banks to perform searches. This is, of course, computationally expensive, and in some cases intractable.

There has been a number of recent developments that potentially enable searches for eccentric binaries. Huerta *et al.* [12] recently developed a purely analytic, frequency-domain model for gravitational waves emitted by compact binaries on orbits with small eccentricity. This model reduces to the quasicircular post-Newtonian approximant TaylorF2 at zero eccentricity and to the postcircular approximation of Yunes *et al.* [13] at small eccentricity. A computationally tractable, matched filtering search using these templates is possible. Matched filtering searches rely on knowing the phase of the gravitational-wave signal being searched for. This is powerful for limiting the noise background of detector data but also is subject to modeling errors, especially in highly eccentric cases where perturbative waveform generation methods are not yet sufficiently accurate to be used as templates. Another proposed

*coughlin@physics.harvard.edu

†meyers@physics.umn.edu

method for detecting highly eccentric binaries is the search for the “repeated bursts” created by the many passes of the eccentric binary [14,15]. Tai *et al.* [15] applied a single-detector power stacking algorithm, developed in Ref. [16] to search for gravitational-wave bursts associated with soft gamma ray repeater events, to the case of eccentric binary mergers. They use a time-frequency signature informed by an eccentric model developed in Ref. [17] to sum up power in Q-transform pixels, which is a multiresolution basis of windowed complex exponentials. Excess power methods, like those from Ref. [15] and those presented below, do not have the same issues as matched filtering, as phase information is not used in these analyses. In the work that follows, we will differ from Ref. [15] in the use of a coherent multidetector statistic with a generic eccentric frequency-time track with the assumption of low-to-moderate eccentricity CBCs.

There is significant astrophysical motivation for designing searches for eccentric CBCs. Main sequence evolution binaries will be circularized by the time they enter the sensitive frequency band for ground-based detectors [18,19]. On the other hand, models exist which could result in highly eccentric CBCs in the sensitive band. O’Leary *et al.* present a model where the scattering of stellar mass black holes in galactic cores containing a supermassive black hole can lead to CBCs with high eccentricities [20]. They expect that 90% of such systems would have eccentricity $\epsilon > 0.9$ when twice their orbital frequency, likely the dominant frequency of gravitational-wave emission, enters the sensitive band.

Assuming a highly idealized pipeline, and ignoring complications such as template bank trial factors, they found the expected rate of coalescence detectable by aLIGO to be $1\text{--}10^2$ per year. This rate estimate is dominated by intermediate-mass black hole binaries, which coalesce with a greater cross section and which produce a louder signal than stellar mass binaries. In our analysis, we focus on low-mass binaries, where the method presented below is likely to give the greatest improvement over other methods. In this work, we argue that the detection rate in realistic pipelines is probably closer to $0.001\text{--}0.5$ per year.

Samsing *et al.* [21] show how eccentric binaries can be generated from interactions between compact binaries and single objects, inducing chaotic resonances in the binary system. Although the number of BBHs in the Galactic center is not well constrained, there may be more than 10^3 black holes in central 0.1 pc of our Galaxy [22]. Binary-binary interactions in globular clusters can also result in nonzero eccentricity. If the orbital planes of the inner and outer binary are highly inclined with respect to one another, Kozai resonances increase the eccentricity of the inner binary [23–25]. Antonini and Perets [24] estimate that 0.5% of binaries formed in this way will have eccentricities $\epsilon > 0.5$ when they enter the sensitive band. Eccentric binary black hole mergers have also been studied

[26,27]. Numerical relativity simulations have shown that highly eccentric BNS systems can exhibit interesting features, including f-modes and disks resulting from the merger [28]. Simulations of NSBH mergers show varying amounts of mass transfer and accretion disk size [29,30]. Therefore, there is significant motivation to design searches for eccentric CBCs as GW sources. Another potential mechanism for forming eccentric neutron star binaries is tidal capture [31].

In situations where the GW is either difficult to accurately model or the parameter space too large to easily create template banks to accurately span the parameter space, a potential alternative is to search for excess power in spectrograms (also called frequency-time ft -maps) of GW detector data [32–34]. In these searches, the goal is to design pattern recognition algorithms that can identify the presence of GW signals across the parameter space of interest (in our case, low-mass, low-to-moderate eccentricity CBCs). A strategy that has been shown to be effective in searches for long-lived transients is known as “seedless clustering,” which integrates the signal power along spectrogram tracks using predefined “templates” chosen to capture the salient features of a wide class of signal models [35–37]. Examples of both nearby and near-detection threshold eccentric BNS signals recovered with a seedless chirping template are shown in Fig. 1.

In previous work [37], the authors have shown how seedless clustering can be applied to searches for low-mass CBC signals ($M_{\text{total}} \leq 10M_{\odot}$). A shortcoming of the previous analysis was the use of a circular post-Newtonian (PN) expansion when performing the search for the CBC signals, which is suboptimal for binaries with even low-to-moderate eccentricities. In this paper, we show how to apply seedless clustering formalism to efficiently search for eccentric CBC signals. In Sec. II, we review the basics of seedless clustering and show how the formalism of Refs. [35–37] can be tuned to more sensitively detect eccentric CBC signals. In Sec. IV, we determine the sensitivity of seedless clustering algorithms to eccentric CBC signals. In Sec. V, we describe the computational resources required for realistic searches and compare the algorithms’ performance on CPUs and graphical processor units (GPUs). In Sec. VI, we discuss the implications of the results to the detectability of O’Leary *et al.* [20], Samsing *et al.* [21] and Antonini and Perets [24] models. We conclude with a discussion of topics for further study in Sec. VII.

II. SEEDLESS CLUSTERING FOR CHIRPS

Spectrograms proportional to GW strain power are the starting point for most searches for unmodeled GW transients. Pixels are computed by dividing detector strain time series in segments and computing the Fourier transform of the segments. We denote the Fourier transform of strain data from detector I for the segment with a midtime of t by $\tilde{s}_I(t; f)$. The time and frequency resolution is

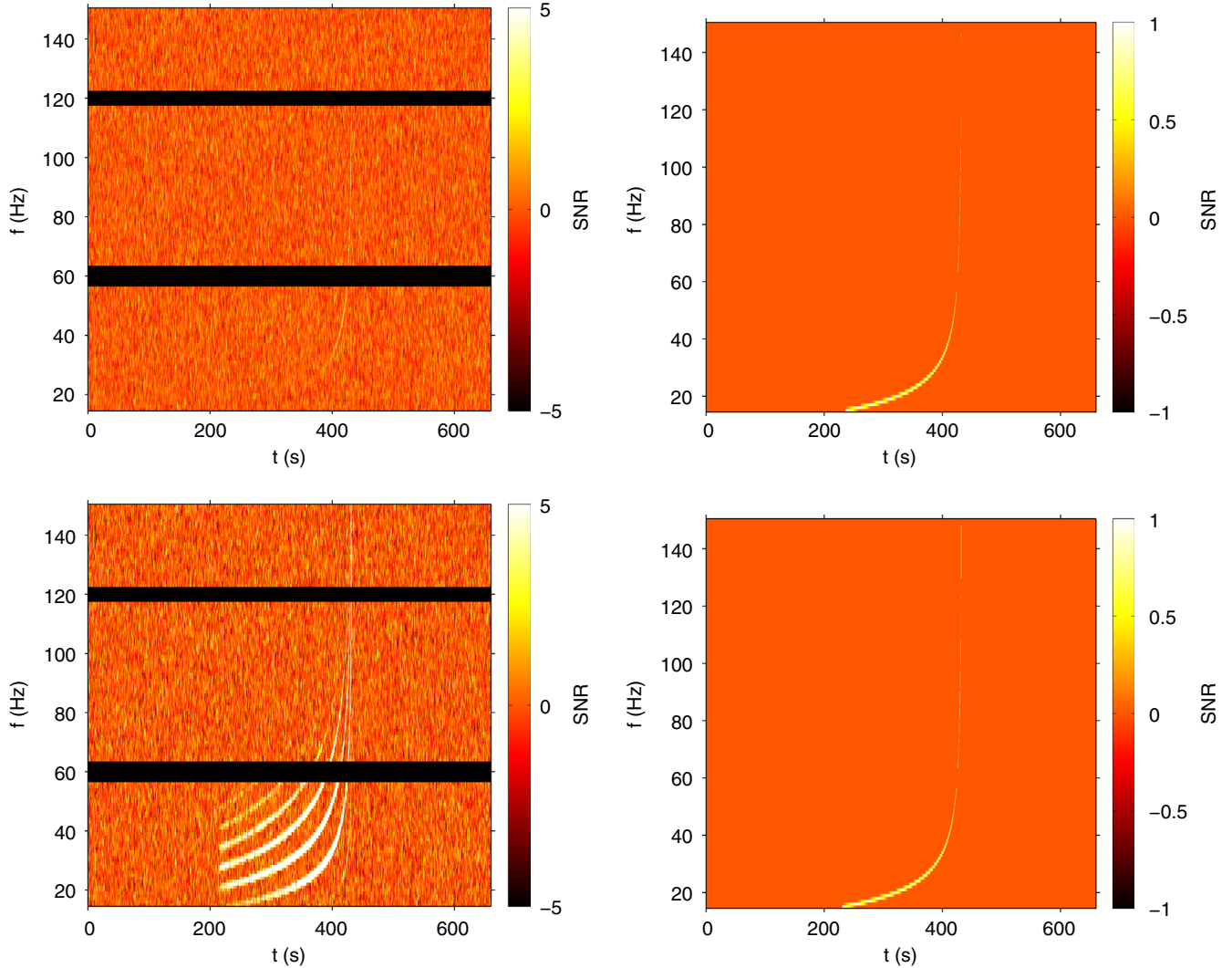


FIG. 1 (color online). The plot on the top left shows $\rho(t; f)$ for a simulated eccentric ($\epsilon = 0.4$) BNS signal injected on top of Monte Carlo detector noise. The simulated noise is created for the advanced LIGO Hanford and Livingston Observatories operating at design sensitivity. The component masses are $1.4M_{\odot}$, and the distance is 100 Mpc. The chirping signal appears as a faintly visible track of lighter-than-average pixels. The horizontal lines are frequency notches to remove instrumental artifacts. On the top right is the recovery obtained with seedless clustering. The signal is recovered with a FAP $< 0.1\%$. The plot on the bottom left shows $\rho(t; f)$ for the same system but an order of magnitude nearer at 10 Mpc. The harmonics are visible at this distance. The bottom right shows the recovery obtained with seedless clustering.

typically optimized based on the signal morphology. Following Ref. [37], we use 50%-overlapping, Hann-windowed segments with duration of 1 s and a frequency resolution of 1 Hz.

Searches for long-duration GW transients construct spectrograms of ft -maps of a cross-power signal-to-noise ratio using the cross-correlation of two GW strain channels [34]:

$$\rho(t; f | \hat{\Omega}) = \frac{2\sqrt{2}}{\mathcal{N}} \operatorname{Re} \left[e^{2\pi i f \Delta \vec{x} \cdot \hat{\Omega} / c} \frac{\tilde{s}_I^*(t; f) \tilde{s}_J(t; f)}{\sqrt{P_I'(t; f) P_J'(t; f)}} \right]. \quad (1)$$

Here, $\hat{\Omega}$ is the direction of the GW source, $\Delta \vec{x}$ is a vector describing the relative displacement of the two detectors, c is the speed of light, and $e^{2\pi i f \Delta \vec{x} \cdot \hat{\Omega} / c}$ is a direction-dependent

phase factor, which takes into account the time delay between the two detectors. $P_I'(t; f)$ and $P_J'(t; f)$ are the autopower spectral densities for detectors I and J in the segments neighboring t . \mathcal{N} is a fast fourier transform (FFT) normalization factor, $L \times Fs$, where L is the number of samples and Fs is the sampling frequency. For additional details, see Refs. [34–37].

Pattern recognition algorithms are used to find signals present in the ft -maps. The specific form of the potential GW in the ft -map depends on the signal. Low-mass, low-to-moderate eccentricity CBCs appear as chirps of increasing frequency. For highly eccentric signals, the signal also includes distinct and repeated “prebursts” that last from minutes to days as the binary evolves from the

initial very eccentric phase toward the less eccentric phase [14].

As described above, seedless clustering identifies clusters of pixels, denoted Γ , likely to be associated with a GW signal by integrating along tracks of predefined templates. The total signal-to-noise ratio for a cluster of pixels can be written as a sum of over $\rho(t; f|\hat{\Omega})$,

$$\text{SNR}_{\text{tot}} \equiv \frac{1}{N^{1/2}} \sum_{\{t;f\} \in \Gamma} \rho(t; f|\hat{\Omega}), \quad (2)$$

where N is the number of pixels in Γ .

While seed-based algorithms connect statistically significant seed pixels to form clusters [35,38], seedless clustering uses banks of parametrized frequency-time tracks. Because of their parametrization, calculations for many templates can be carried in parallel, which facilitates rapid calculations on multicore devices such as GPUs. Because these banks do not use the phase and GW waveform amplitude, searches utilizing them are less sensitive than traditional matched filtering searches. On the other hand, for this same reason, they can be more robust when searching for GWs that do not fit the signal model exactly.

There is a number of seedless clustering parametrizations at this point in the literature [36,37,39]. One of the most robust is a template bank of randomly generated Bézier curves [39], which have been shown to be sensitive to a number of long-lived narrow-band GW signals [36]. In the case of circular CBC signals, the most appropriate choice is a PN expansion of the form

$$f(t) = \frac{1}{2\pi} \frac{c^3}{4GM_{\text{total}}} \sum_{k=0}^7 p_k \tau^{-(3+k)/8}, \quad (3)$$

where

$$\tau = \frac{\eta c^3 (t_c - t)}{5GM}. \quad (4)$$

Here, G is the gravitational constant, M_{total} is the total mass of the binary, η is the symmetric mass ratio, and t_c is the coalescence time. The definition should be provided. The expansion coefficients p_k can be found in Ref. [40]. In Ref. [37], these were shown to fit the frequency evolution of the circular CBCs very well. On the other hand, the fits for eccentric CBCs were less precise. This motivates the derivation presented below.

To derive an expression for eccentric CBC signals, we use the lowest-order, quadrupole formula for eccentric binaries [18,19]. The derivation can be found in the Appendix and the frequency evolution can be found in Eq. (A9). One characteristic of seedless clustering is the use of a single track across the ft -map. This is suboptimal for eccentric signals as some power is present in harmonics of

the orbital frequency of the binary, as can be seen in Fig. 1. Yunes *et al.* [13] show that for small eccentricities the power is dominated by components oscillating at once, twice, and three times the orbital frequency. In the limit $\epsilon \ll 1$, the dominant term is the second harmonic. It is consistent with the assumptions above then that we search for a single, dominant harmonic with our algorithm.

In Ref. [37], circularized CBC waveforms are parametrized by two numbers: the coalescence time and the chirp mass. (In Ref. [37], we showed how approximating the individual component masses as equal led to excellent track fits, allowing for a significant reduction in the number of templates required to span the space.) The inclusion of eccentricity expands the chirp parameter space by an additional dimension. In the analysis below, we conservatively use a minimum component mass of $1M_{\odot}$.

By searching over 40 different time delays, corresponding to 40 different sky rings, a computationally efficient all-sky search can be performed. This was demonstrated in Ref. [37] to be sufficient to recover CBC signals in arbitrary directions. The assumption of low-to-moderate eccentricities here leads to a small increase in the number of templates required to span the space of interest. At eccentricities of 0.5 or above, contributions from the neglected terms in the derivation become significant at the 10% level. Also, the assumption that most of the power is in a single harmonic begins to break down. Therefore, we search from $0 \leq \epsilon \leq 0.5$. This leads to an increase in templates by a factor of 6 (using steps of 0.1 in eccentricity). The sensitivity does not improve appreciably with a higher-resolution scan over eccentricity bins.

To justify expanding the parameter space, which not only requires more templates but also increases the noise background distribution (requiring higher signal-to-noise ratio to make detections), the fit of the templates must improve. We show below that there is a portion of the parameter space where the eccentric templates have more overlap with the signals and consequently capture more signal-to-noise ratio (SNR), and thereby extend the sensitive distance of the search. A simple metric for determining the efficacy of the fits is the overlap between the true track h and the template track s ,

$$O(s, h) = \frac{\frac{1}{N_s^{1/2}} \sum_{i=1}^{N_s} \rho_s}{\frac{1}{N_h^{1/2}} \sum_{i=1}^{N_h} \rho_h}, \quad (5)$$

where N_s and N_h are the number of pixels in the s and h tracks, respectively. The overlap corresponds to the sum over the true track h by the template track s , as in Eq. (2). $O(s, h) = 1$ corresponds to perfect overlap whereas $O(s, h) = 0$ corresponds to zero overlap. It is important to note that this definition of overlap is only *analogous* to the standard definition for matched filter searches—see, e.g., Refs. [41,42]—as this definition is designed for

spectrographic excess power searches. The fitting factor, FF , gives the loss in SNR due to nonoptimal templates. FF is computed by maximizing the overlap function over the template bank,

$$FF(h) = \max_s (O(s, h)). \quad (6)$$

Like our expression for $O(s, h)$, $FF(s, h)$ is analogous (but not directly comparable to) definitions from matched filtering; see, e.g., Refs. [41,42]. $FF = 1$ means that the fit in templates is perfect, while $FF = 0$ means that there is no overlap.

III. SENSITIVITY STUDY

The design of the sensitivity study is as follows. We use Monte Carlo Gaussian noise consistent with the design sensitivity of advanced LIGO. We perform an untriggered search over a week of data. Following Ref. [37], we create 660 s nonoverlapping spectrograms. To estimate background, we perform 100 time slides of a week of data. For each trial, we search for a chirp signal using circular templates and using eccentric templates.

We begin our study by determining our background. Using many noise realizations, we estimate the distribution of SNR_{tot} for the two search variations corresponding to circular and eccentric templates. Using these noise distributions, we determine the value of SNR_{tot} (for each search variation). This corresponds to a false alarm probability (FAP) of 1% for the untriggered searches.

We then determine the distance at which the signals can be detected with SNR_{tot} sufficient for a FAP < 1%. To do so, we inject GW signals into many noise realizations,

with optimal sky location and an optimal source orientation, and recover them with the two search variations. We define the “sensitive distance” as the distance at which 50% of the signals are recovered with FAP < 1% for each pipeline. Following Ref. [37], we use 15 CBC waveforms with component masses ranging from 1.4– $5M_{\odot}$ and eccentricities ranging from 0–0.6. “Eccentricity” here is taken to mean the eccentricity of the binary when twice its orbital frequency enters the sensitive band. Noneccentric waveforms are generated using a SpinTaylorT4 approximation. Eccentric waveforms are generated using CBWaves, which employs all the contributions that have been worked out for generic eccentric orbits up to 2PN order [43]. The parameters for each waveform are give in Table I.

IV. RESULTS

We summarize the results of our sensitivity study in Table I. First, we evaluate the improvement in sensitivity gained by using eccentric templates. Then, for the sake of completeness, we consider the (small) *loss* in sensitivity for circular signals due to the expanded search space.

A. Recovery of eccentric signals

We begin with an analysis of the fitting factors. The fitting factors for the eccentric templates range from 0.55–1, while the fitting factors for the circular templates range from 0.25–1. In general, the fitting factors for the circular and eccentric templates are similar for the noneccentric cases considered here. This is to be expected as the eccentric templates should converge to the circular ones

TABLE I. Sensitive distances for different waveforms (assuming optimal sky location and source orientation) given the design sensitivity of advanced LIGO [44]. Each row represents a different waveform: BNS = “binary neutron star,” NSBH = “neutron star black hole binary,” and BBH = “binary black hole.”. A waveform beginning with an “E” is eccentric. The columns marked m_1 and m_2 give the component masses in units of M_{\odot} . The next columns list the eccentricity ϵ and the waveform duration in seconds. The next two columns list the fitting factors (FF) for both chirplike templates and eccentric templates. The final two columns list the (FAP = 1%, FalseDismissalProbability = 50%) detection distance (in Mpc) for circular templates and eccentric templates.

Waveform	m_1	m_2	ϵ	t_{dur} (s)	FF_{Circular}	$FF_{\text{Eccentric}}$	D_{Circular}	$D_{\text{Eccentric}}$
BNS 1	1.4	1.4	0	170	0.95	0.95	160	160
NSBH 1	3.0	1.4	0	96	0.9	0.9	270	270
BBH 1	3.0	3.0	0	54	0.95	0.95	420	390
BBH 2	5.0	5.0	0	42	0.75	0.75	620	560
EBNS 1	1.4	1.4	0.2	120	0.85	0.85	150	160
EBNS 2	1.4	1.4	0.4	224	0.65	0.85	150	160
ENSBH 1	3.0	1.4	0.2	69	0.95	0.95	240	240
ENSBH 2	3.0	1.4	0.4	127	0.6	0.9	220	240
ENSBH 3	3.0	1.4	0.6	237	0.65	0.75	220	240
EBBH 1	3.0	3.0	0.2	40	0.3	0.75	240	360
EBBH 2	3.0	3.0	0.4	70	0.25	0.7	180	290
EBBH 3	3.0	3.0	0.6	128	0.3	0.6	200	350
EBBH 4	5.0	5.0	0.2	14	0.45	0.85	350	420
EBBH 5	5.0	5.0	0.4	26	0.3	0.65	290	390
EBBH 6	5.0	5.0	0.6	51	0.4	0.55	240	390

in the limit of small eccentricities. The performance at low eccentricities for the low-mass systems shows a slightly better fitting factor for the circular templates. As eccentricity and mass increase, the fitting factors for eccentric systems become significantly higher than that for the circular templates. For some of the systems considered here, the fitting factors for the eccentric templates can be more than a factor of 2 higher than for the circular templates. This means that the signal-to-noise ratio recovered for these tracks will be more than a factor of 2 higher for the eccentric bank. Figure 2 shows an example of the improvement of eccentric waveform fits from using the eccentric templates. The main reason that the fitting factors become relatively poor as mass increases is the breakdown of the assumption that the signals being searched for are narrow band. For systems with nonzero eccentricity, there is a broad spectrum of frequencies rather than an identifiable $f(t)$.

The ratio of detection distance for eccentric templates to circular templates ranges from 100%–175% with a mean of 130%. This corresponds to an average ratio of sensitive volumes of 250%. This is comparable to the gain in sensitivity when going from Bézier curves to circular templates [37]. The sensitivity distances for eccentric waveforms decreases as eccentricity increases. The falloff is significantly slower for the eccentric templates. This is due to the breakdown of the circular binary approximation.

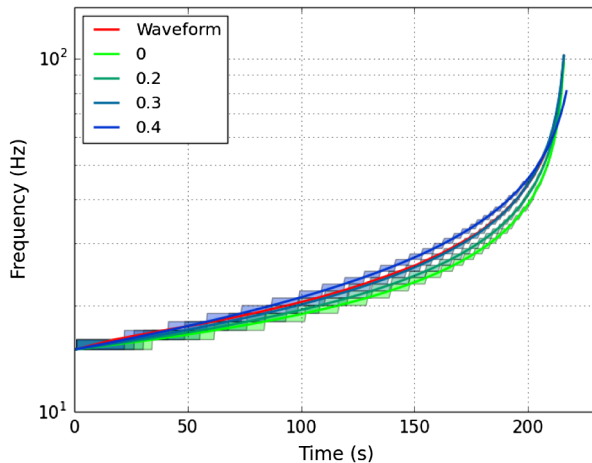


FIG. 2 (color online). This plot shows a BNS waveform (red) with $\epsilon = 0.4$ and $m_1 = m_2 = 1.4M_\odot$ compared to eccentric templates using Eq. (A9) with eccentricities ranging from $\epsilon = 0$ (light green) through $\epsilon = 0.4$ (blue). The shaded regions represent a nominal 1 Hz band around the track. Ideally, the shaded region for a track would overlap with the red waveform. While the best fit (which happens for $\epsilon = 0.3$) is not associated with the correct eccentricity, it is nonetheless a reasonable fit to the waveform that is better than could be obtained using only a circular parametrization ($\epsilon = 0$). This exhibits the superiority of the shape of the eccentric parametrization in fitting eccentric waveforms.

The breakdown becomes more pronounced at higher eccentricities, as one would expect. The increase in sensitivity when going from an all-sky search to a triggered search is between 10%–20% for both circular and eccentric templates.

Table I shows that the sensitive distances are not always monotonically decreasing functions of the eccentricity for either eccentric or circular templates. This is because the sensitive distances are determined both by the fitting factors as well as the waveforms themselves. Because the fitting factors are maximized over the parameter space, some of the waveforms will be better fit than others. In addition, the waveforms will have different amounts of available “power” to be fit. Therefore, it is not necessarily surprising that the sensitive distances are not monotonically decreasing.

B. Recovery of circular signals

We now turn our attention to the sensitivity distances. The trends in the sensitivity distances are similar to those seen in the fitting factors. In general, the sensitivity to the circular waveforms for the eccentric templates is slightly worse than the circular waveforms. This is predominantly due to the increased background distribution from the expansion of the parameter space. The ratio of detection distance for eccentric templates/circular templates ranges from 90%–100% with a mean of 95%. The average ratio of sensitive volumes is 88%.

V. COMPUTATIONAL REQUIREMENTS

To estimate the computational cost of an all-sky seedless clustering search (with eccentric chirplike templates), we carried out a benchmark study using a Kepler GK104s GPU and an eight-core Intel Xeon E5-4650 CPU. Each job was allotted 8 g of memory. The GPU was able to analyze 660 s of data in 106 s, corresponding to a duty cycle of $\approx 16\%$. This is about a factor of 2 slower than the circular-template search. Using all eight cores, the CPU duty cycle was comparable; the job-by-job variability in run time is greater than the difference between GPUs and eight-core CPUs on average.

If we require background estimation at the level of $\text{FAP} = 1\%$, which corresponds to performing 100 time slides, it follows that a continuously running seedless clustering search with chirplike templates can be carried out with just 32 continuously running GPUs (or eight-core CPUs). Here, we have taken into account an additional factor of 2 needed to implement overlapping spectrograms to ensure that signals do not fall on the boundary. (Background estimation at the level of $\text{FAP} = 0.1\%$ would require 320 GPUs/eight-core CPUs.) In reality, the duty cycle from coincident GW detectors may be $\approx 50\%$, in which case these computing requirements are conservative by a factor of 2.

VI. ASTROPHYSICAL IMPLICATIONS

O’Leary *et al.* present a model where the scattering of stellar mass black holes in galactic cores which contain a supermassive black hole can lead to CBCs with high eccentricities, corresponding to eccentricities near to 1 [20]. We discuss here the potential for detecting such systems given the rates presented in the paper. Table I of Ref. [20] presents the merger rate per Milky Way equivalent galaxy (MWEG) for the models considered. We can straightforwardly convert from the rates in this paper to what we expect in the advanced detector era. The most optimistic scenario, given by model F-1, predicts 1.5×10^{-2} MWEG⁻¹ Myr⁻¹. The median scenario, given by the median of the models considered, predicts 3.3×10^{-4} MWEG⁻¹ Myr⁻¹. The pessimistic scenario, given by model A/β3, predicts 2.0×10^{-4} MWEG⁻¹ Myr⁻¹. We now find the rates of CBCs given by Table II of Ref. [3]. The low, realistic, and high rates for BBHs are 0.01 MWEG⁻¹ Myr⁻¹, 0.4 MWEG⁻¹ Myr⁻¹, and 30 MWEG⁻¹ Myr⁻¹, respectively. The matched filter detection rates of CBCs for advanced LIGO are given by Table IV of Ref. [3]. The low, realistic, and high detection rates for BBHs are 0.4, 20, and 1000, respectively.

Using these estimates, we can compute the expected rates of eccentric detections by a matched filtering pipeline using the ratio of the O’Leary *et al.* and aLIGO detection rates, multiplied by the BBH detection rate. These are 0.008, 0.02, and 0.5 for the low, realistic, and high detection rates for BBHs. We can convert between matched filter and seedless clustering detection rates by dividing through by 8 (as the distances differ by about a factor of 2) [37]. These are given by 0.001, 0.002, and 0.06 for the low, realistic, and high detection rates for BBHs. Table II summarizes these results. We note here that the matched filtering results stated here would require a dedicated eccentric binary matched filtering pipeline, which does

not currently exist. A matched filtering pipeline using circular templates would have rates similar in order of magnitude to that of seedless clustering. We describe in Sec. IV where seedless clustering is most competitive. The relatively low detection rates are due to the significantly fewer eccentric binaries expected relative to circular binaries, at least in the O’Leary *et al.* model.

Samsing *et al.* [21] estimate that eccentric binaries formed from interactions between compact binaries and single objects are about 1% of the anticipated total compact object merger rate. Therefore, we can scale the matched filter detection rates of CBCs for advanced LIGO from Table IV of Ref. [3] for the BNS, NSBH, and BBH systems by 0.01. This results in 0.004, 0.4, and 4 for the low, realistic, and high detection rates for BNS; 0.002, 0.1, and 3 for NSBH; and 0.004, 0.2, and 10 for BBH. Performing the same scaling as above for seedless clustering, we find 0.0005, 0.05, and 0.5 for the low, realistic, and high detection rates for BNS; 0.0003, 0.01, and 0.4 for NSBH; and 0.0005, 0.03, and 1 for BBH.

Antonini and Perets [24] estimate that eccentric binaries formed from Kozai resonances have rates of 1% and 10% of the realistic detection rates of circular binaries for BNS and BBH systems, respectively. About 0.5% of these binaries will enter the sensitive band with significant eccentricities ($\epsilon \geq 0.5$). Therefore, we can scale the realistic rates from Table IV of Ref. [3] for the BNS and BBH systems by 0.00005 and 0.0005, respectively. This results in 0.002 and 0.01 for BNS and BBH, respectively. Performing the same scaling as above for seedless clustering, we find 0.0003 and 0.001.

VII. DISCUSSION

We have described an analytic expression for the frequency evolution of low-mass, low-to-moderate eccentricity waveforms. We showed how an implementation of

TABLE II. Potential detection rates of eccentric compact binary coalescences for both matched filtering and seedless clustering. The rates combine results for eccentric binaries given by O’Leary *et al.* [20], Samsing *et al.* [21] and Antonini and Perets [24], as well as aLIGO detection rates. The matched filtering line assumes a dedicated eccentric binary matched filtering pipeline, which does not currently exist. The seedless clustering algorithm is the one presented in this paper. Please see the text of Sec. VI for further details.

Model	Source	Algorithm	Low rate	Realistic rate	High rate	
Scattering in galactic cores [20]	BBH	MF	0.008	0.02	0.5	
		SC	0.001	0.002	0.06	
	BNS	MF	0.004	0.4	4	
		SC	0.0005	0.05	0.5	
	Binary-single stellar encounters [21]	NSBH	MF	0.002	0.1	3
			SC	0.0003	0.01	0.4
BBH		MF	0.004	0.2	10	
		SC	0.0005	0.03	1	
Kozai resonances [24]	BNS	MF	-	0.002	-	
		SC	-	0.0002	-	
	BBH	MF	-	0.01	-	
		SC	-	0.001	-	

this evolution for seedless clustering, optimized for compact binary coalescences, can improve searches for eccentric signals significantly. We find that the eccentric search can expand the sensitive volume by as much as a factor of $3\times$ depending on the waveform (a factor of 1.4 on average) compared to a comparable circular search.

In the event that circular template banks are used by matched filtering to search for eccentric signals [45], there will be a non-negligible loss in sensitivity for these searches. Huerta and Brown estimate signal-to-noise-ratio loss factors of about 0.5 and 0.2 for BNS systems with eccentricities of 0.2 and 0.4, respectively [11]. This would bring the matched filtering sensitivity distances of these signals to 225 and 90 Mpc, compared to 160 Mpc for these two eccentricity values when using seedless clustering; therefore, seedless clustering with eccentric template banks may provide further opportunities for observing these types of signals.

In the future, we intend to explore the possibility that including amplitude information in the track recoveries improves the detection sensitivities. This is beneficial especially for compact binaries, where the amplitude information is known. Therefore, the spectrogram pixels predicted to contain a higher amplitude of SNR are weighted more strongly than those predicted to contain less. This would help account for the relatively low-SNR contribution at low frequency and not overweight the pixels in that band, which would increase the background SNR distribution. Also, it will be useful to carry out a systematic comparison of seedless clustering with matched filtering pipelines using non-Gaussian noise. Mock data challenges with injected compact binary signals are currently being performed, and the results of these will be useful for a one-to-one comparison of methods. Finally, we intend to use this algorithm on future data from advanced LIGO and advanced Virgo.

ACKNOWLEDGMENTS

M.C. is supported by National Science Foundation Graduate Research Fellowship Program, under NSF Grant No. DGE 1144152. E.T. is a member of the LIGO Laboratory, supported by funding from United States National Science Foundation. N.C. and J.L.'s work was supported by NSF Grant No. PHY-1204371. LIGO was constructed by the California Institute of Technology and Massachusetts Institute of Technology with funding from the National Science Foundation and operates under cooperative Agreement No. PHY-0757058. We greatly appreciate the helpful comments about the frequency evolution of eccentric compact binary coalescences from Ilya Mandel.

APPENDIX: ECCENTRIC TEMPLATE DERIVATION

To derive an expression for eccentric CBC signals, we use the lowest-order, quadrupole formula for eccentric binaries (for simplicity, we will set $G = c = 1$) [18,19]. We write our equations in terms of eccentricity ϵ and a new variable $x = (M_{\text{total}} \times \omega)^{2/3}$, where ω is the angular velocity of the compact object. To derive an analytic solution, we keep the lowest-order terms in x for both the x and ϵ evolution. Because we are fitting the frequency evolution of the inspiral, the fact that the PN calculations tend to slowly converge at late inspiral are less important here. The differential equations are [27]

$$\dot{x} = \frac{2\eta}{15(1-\epsilon^2)^{7/2}}(96 + 292\epsilon^2 + 37\epsilon^4)x^5 + \mathcal{O}(x^6) \quad (\text{A1})$$

$$\dot{\epsilon} = \frac{-\epsilon\eta}{15(1-\epsilon^2)^{5/2}}(304 + 121\epsilon^2)x^4 + \mathcal{O}(x^5). \quad (\text{A2})$$

Taking the ratio of these equations, we obtain

$$\frac{dx}{d\epsilon} = \frac{-2}{\epsilon} \left(\frac{1}{1-\epsilon^2} \right) \left(\frac{96 + 292\epsilon^2 + 37\epsilon^4}{304 + 121\epsilon^2} \right) x. \quad (\text{A3})$$

We integrate this equation, yielding

$$x(\epsilon) = C_0 \left[\frac{1-\epsilon^2}{\epsilon^{12/19}(304 + 121\epsilon^2)^{870/2299}} \right]. \quad (\text{A4})$$

Plugging this equation back into the original differential equation and expanding to fourth order in epsilon results in

$$\epsilon(t) = \left(\frac{B-t}{A \times M} \right)^{19/48}, \quad (\text{A5})$$

where

$$A = \frac{5 \times 31046}{172 \times 2^{2173/2299} \times 19^{1118/229} \eta C_0^4} \quad (\text{A6})$$

$$C_0 = (2\pi M f_0)^{2/3} \left[\frac{1-\epsilon_0^2}{\epsilon_0^{12/19}(304 + 121\epsilon_0^2)^{870/2299}} \right]^{-1} \quad (\text{A7})$$

$$B = AM\epsilon_0^{48/19}. \quad (\text{A8})$$

Combining these together,

$$f(t) = \frac{1}{2\pi M} \left[\frac{C_0(1-\epsilon^2)}{\epsilon^{12/19}(304 + 121\epsilon^2)^{870/2299}} \right]^{3/2}, \quad (\text{A9})$$

where f_0 is the initial frequency of the binary and ϵ_0 is the initial eccentricity.

- [1] J. Aasi *et al.* (LIGO Scientific Collaboration and Virgo Collaboration), *Phys. Rev. D* **87**, 022002 (2013).
- [2] J. Abadie *et al.* (LIGO Scientific Collaboration and Virgo Collaboration), *Phys. Rev. D* **85**, 082002 (2012).
- [3] J. Abadie *et al.* (LIGO Scientific Collaboration and Virgo Collaboration), *Classical Quantum Gravity* **27**, 173001 (2010).
- [4] G. Harry (LIGO Scientific Collaboration), *Classical Quantum Gravity* **27**, 084006 (2010).
- [5] F. Acernese *et al.* (Virgo Collaboration), *Classical Quantum Gravity* **25**, 114045 (2008).
- [6] H. Grote (LIGO Scientific Collaboration), *Classical Quantum Gravity* **27**, 084003 (2010).
- [7] K. Somiya (KAGRA collaboration), *Classical Quantum Gravity* **29**, 124007 (2012).
- [8] A. Sadowski, K. Belczynski, T. Bulik, N. Ivanova, F. A. Rasio, and R. OShaughnessy, *Astrophys. J.* **676**, 1162 (2008).
- [9] M. Agathos, W. Del Pozzo, T. G. F. Li, C. Van Den Broeck, J. Veitch, and S. Vitale, *Phys. Rev. D* **89**, 082001 (2014).
- [10] J. Abadie *et al.*, *Phys. Rev. D* **85**, 102004 (2012).
- [11] E. A. Huerta and D. A. Brown, *Phys. Rev. D* **87**, 127501 (2013).
- [12] E. A. Huerta, P. Kumar, S. T. McWilliams, R. O'Shaughnessy, and N. Yunes, *Phys. Rev. D* **90**, 084016 (2014).
- [13] N. Yunes, K. G. Arun, E. Berti, and C. M. Will, *Phys. Rev. D* **80**, 084001 (2009).
- [14] B. Kocsis and J. Levin, *Phys. Rev. D* **85**, 123005 (2012).
- [15] K. S. Tai, S. T. McWilliams, and F. Pretorius, *Phys. Rev. D* **90**, 103001 (2014).
- [16] P. Kalmus, K. Cannon, S. Márka, and B. Owen, *Phys. Rev. D* **80**, 042001 (2009).
- [17] W. East, S. McWilliams, J. Levin, and F. Pretorius, *Phys. Rev. D* **87**, 043004 (2013).
- [18] P. C. Peters and J. Mathews, *Phys. Rev.* **131**, 435 (1963).
- [19] P. C. Peters, *Phys. Rev.* **136**, B1224 (1964).
- [20] R. M. O'Leary, B. Kocsis, and A. Loeb, *Mon. Not. R. Astron. Soc.* **395**, 2127 (2009).
- [21] J. Samsing, M. MacLeod, and E. Ramirez-Ruiz, *Astrophys. J.* **784**, 71 (2014).
- [22] C. Hopman and T. Alexander, *Astrophys. J. Lett.* **645**, L133 (2006).
- [23] L. Wen, *Astrophys. J.* **598**, 419 (2003).
- [24] F. Antonini and H. B. Perets, *Astrophys. J.* **757**, 27 (2012).
- [25] N. Seto, *Phys. Rev. Lett.* **111**, 061106 (2013).
- [26] U. Sperhake, E. Berti, V. Cardoso, J. A. González, B. Brügmann, and M. Ansorg, *Phys. Rev. D* **78**, 064069 (2008).
- [27] I. Hinder, F. Herrmann, P. Laguna, and D. Shoemaker, *Phys. Rev. D* **82** (2010).
- [28] R. Gold, S. Bernuzzi, M. Thierfelder, B. Brügmann, and F. Pretorius, *Phys. Rev. D* **86**, 121501 (2012).
- [29] W. E. East, F. Pretorius, and B. C. Stephens, *Phys. Rev. D* **85**, 124009 (2012).
- [30] B. C. Stephens, W. E. East, and F. Pretorius, *Astrophys. J.* **737**, L5 (2011).
- [31] W. H. Lee, E. Ramirez-Ruiz, and G. van de Ven, *Astrophys. J.* **720**, 953 (2010).
- [32] P. Sutton *et al.*, *New J. Phys.* **12**, 053034 (2010).
- [33] S. Klimenko, I. Yakushin, A. Mercer, and G. Mitselmakher, *Classical Quantum Gravity* **25**, 114029 (2008).
- [34] E. Thrane *et al.*, *Phys. Rev. D* **83**, 083004 (2011).
- [35] E. Thrane and M. Coughlin, *Phys. Rev. D* **88**, 083010 (2013).
- [36] E. Thrane and M. Coughlin, *Phys. Rev. D* **89**, 063012 (2014).
- [37] M. Coughlin, E. Thrane, and N. Christensen, *Phys. Rev. D* **90**, 083005 (2014).
- [38] T. Prestegard and E. Thrane, <https://dcc.ligo.org/LIGO-L1200204-v1>.
- [39] G. Farin, *Curves and Surfaces for CAGD, A Practical Guide*, 4th ed. (Academic Press, New York, 1996).
- [40] L. Blanchet, *Living Rev. Relativity* **5**, 3, (2002).
- [41] D. A. Brown and P. J. Zimmerman, *Phys. Rev. D* **81**, 024007 (2010).
- [42] D. A. Brown, I. Harry, A. Lundgren, and A. H. Nitz, *Phys. Rev. D* **86**, 084017 (2012).
- [43] P. Csizmadia, G. Debreczeni, I. Rácz, and M. Vasúth, *Classical Quantum Gravity* **29**, 245002 (2012).
- [44] J. Aasi *et al.*, <http://arxiv.org/abs/1304.0670>.
- [45] D. A. Brown, P. Kumar, and A. H. Nitz, *Phys. Rev. D* **87**, 082004 (2013).