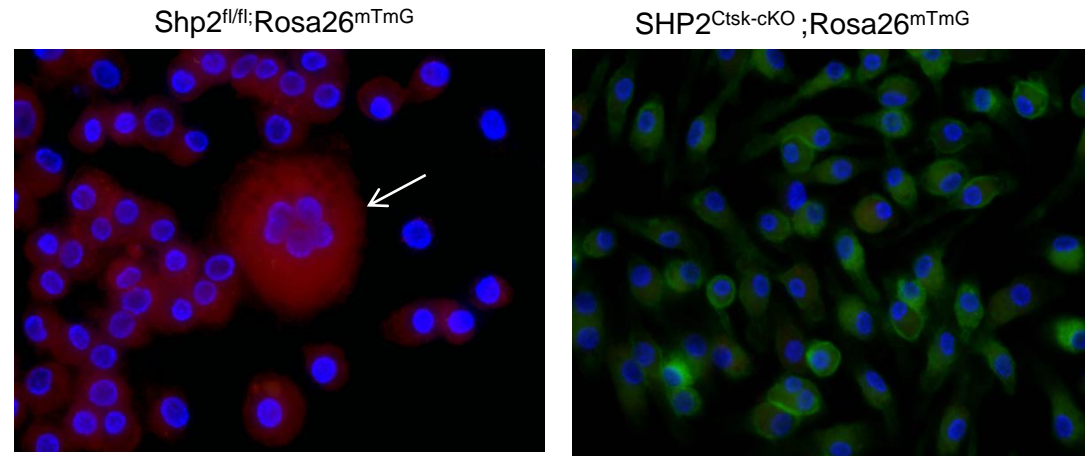


## Figure S3



**Figure S3.** Fluorescence images demonstrated that Shp2 sufficient (red) but not deficient osteoclast precursors formed giant multinuclear osteoclasts. BM cells from *Ptpn11<sup>fl/fl</sup>;R26<sup>mTmG</sup>* and *Shp2<sup>Ctsk-cKO</sup>;R26<sup>mTmG</sup>* mice were cultured in osteoclastogenic medium for 8 days, cells were then fixed and counterstained with DAPI to visualize multinuclear osteoclast formation. Please notice that Shp2 deficient cells (GFP<sup>+</sup>) failed to make multinuclear giant osteoclasts.