

TO APPEAR IN APJ LETTERS

Preprint typeset using L^AT_EX style emulateapj v. 5/2/11

THE PROGENITOR OF SUPERNOVA 2011DH HAS VANISHED

SCHUYLER D. VAN DYK¹, WEIKANG ZHENG², KELSEY I. CLUBB², ALEXEI V. FILIPPENKO², S. BRADLEY CENKO^{2,3}, NATHAN SMITH⁴, ORI D. FOX², PATRICK L. KELLY², ISAAC SHIVVERS², AND MOHAN GANESHALINGAM⁵*To Appear in ApJ Letters*

ABSTRACT

We conducted *Hubble Space Telescope* (*HST*) Snapshot observations of the Type IIb Supernova (SN) 2011dh in M51 at an age of ~ 641 days with the Wide Field Camera 3. We find that the yellow supergiant star, clearly detected in pre-SN *HST* images, has disappeared, implying that this star was almost certainly the progenitor of the SN. Interpretation of the early-time SN data which led to the inference of a compact nature for the progenitor, and to the expected survival of this yellow supergiant, is now clearly incorrect. We also present ground-based *UBVRI* light curves obtained with the Katzman Automatic Imaging Telescope (KAIT) at Lick Observatory up to SN age ~ 70 days. From the light-curve shape including the very late-time *HST* data, and from recent interacting binary models for SN 2011dh, we estimate that a putative surviving companion star to the now deceased yellow supergiant could be detectable by late 2013, especially in the ultraviolet. No obvious light echoes are detectable yet in the SN environment.

Subject headings: galaxies: individual (NGC 5194) — stars: evolution — supernovae: general — supernovae: individual (SN 2011dh)

1. INTRODUCTION

Supernova (SN) 2011dh (also known as PTF11eon) in Messier 51 (M51; more precisely, M51a, or NGC 5194) is a nearby example of the intermediate class of core-collapse supernovae (SNe), the Type IIb, existing between the hydrogen-rich SNe II and the hydrogen-stripped SNe Ib (see Filippenko 1997 for a review of SN classification). The progenitors of SNe II, especially the Type II-Plateau SNe (the most common core-collapse events), have been shown to be red supergiants (RSGs) through direct progenitor identifications (e.g., Smartt et al. 2004; Fraser et al. 2011; Van Dyk et al. 2012a,b). The RSG progenitors of SNe II-P appear to be consistent with expectations of single-star evolution models (e.g., Falk & Arnett 1977; Wheeler & Swartz 1993; Dessart & Hillier 2011). The progenitors of both SNe Ib and SNe IIb, on the other hand, require the outer stellar envelope to be substantially stripped away prior to explosion. One possible channel has long been thought to be massive interacting binary systems (e.g., Podsiadlowski et al. 1993; Woosley et al. 1994; Maund et al. 2004; Claeys et al. 2011). SNe IIb thus provide us with vital information regarding the evolutionary transition from a single massive red supergiant, with relatively low late-stage mass loss, to a star for which the mass loss before explosion must have been far more vigorous, potentially as a result of mass exchange with a companion. SNe IIb constitute about 10–11% of all core collapse SNe (Smith et al. 2011; Li et al. 2011),

and their implied mass range appears to be consistent with binary evolution. Chevalier & Soderberg (2010) have further separated the already rare SNe IIb into those whose progenitors are compact (radius $R \approx 10^{11}$ cm) and those that are extended ($R \approx 10^{13}$ cm), based on emission from the shock-heated envelope and the radio and X-ray properties of the SNe. Hence, all nearby, well-studied cases of SNe IIb are particularly valuable.

SN 2011dh was discovered independently by several amateur astronomers (as summarized by Griga et al. 2011) and by the Palomar Transient Factory (PTF) collaboration (Arcavi et al. 2011) within ~ 1 day of explosion, between May 31 and June 1. Early photometry and spectra of the SN were presented by Arcavi et al. (2011), who argued that the data, when compared to analytical models of SN shock breakout, were *inconsistent* with an extended progenitor. Based on early-time radio and X-ray data, Soderberg et al. (2012) also reasoned that the progenitor must have been compact. Further radio observations were compiled by Krauss et al. (2012), Bietenholz et al. (2012), and Horesh et al. (2012). Additional X-ray data were collected and analyzed by Horesh et al. (2012), Campana & Immler (2012), and Sasaki & Ducci (2012). Krauss et al. and Bietenholz et al. maintained that the progenitor was compact. Horesh et al. concluded that the uncertainties in the modeling of the existing X-ray and radio data were larger than previously estimated, and therefore the inferred progenitor radius is consistent both with being compact (as found for the SN IIb 2008ax; Pastorello et al. 2008; Taubenberger et al. 2011; Chornock et al. 2011) and extended (best exemplified by the SN IIb 1993J in M81; e.g., Richmond et al. 1996; Matheson et al. 2000).

Shortly after discovery of SN 2011dh, Li & Filippenko (2011) identified a possible progenitor star in archival *Hubble Space Telescope* (*HST*) images of M51 obtained with the Advanced Camera for Surveys (ACS). This iden-

¹ Spitzer Science Center/Caltech, Mailcode 220-6, Pasadena CA 91125; email: vandyk@ipac.caltech.edu.

² Department of Astronomy, University of California, Berkeley, CA 94720-3411.

³ Astrophysics Science Division, NASA Goddard Space Flight Center, Mail Code 661, Greenbelt, MD, 20771, USA

⁴ Steward Observatory, University of Arizona, Tucson, AZ 85720.

⁵ Lawrence Berkeley National Laboratory, Berkeley CA, 94720.

tification was confirmed by both Maund et al. (2011) and Van Dyk et al. (2011) by comparing ground-based adaptive optics images of the SN with the archival *HST* ACS and Wide-Field and Planetary Camera 2 (WFPC2) images. The candidate progenitor had the bolometric luminosity ($L_{\text{bol}} \approx 10^5 L_{\odot}$) and effective temperature ($T_{\text{eff}} \approx 6000$ K) of a yellow supergiant (YSG). Van Dyk et al. (2011), following the conclusions of Arcavi et al. (2011) and Soderberg et al. (2012), assumed that the progenitor star was compact and speculated that the YSG was the *companion* in an interacting binary system to the hotter, undetected progenitor. Van Dyk et al. concluded that the YSG’s initial mass was $M_{\text{initial}} = 17\text{--}19 M_{\odot}$, suggested by the star’s locus in the Hertzsprung-Russell diagram (HRD) compared with the tracks of luminosity and effective temperature for single massive-star theoretical evolutionary models. In contrast, Maund et al. (2011) concluded that the YSG was, in fact, the likely progenitor star, with $M_{\text{initial}} = 13 \pm 3 M_{\odot}$, comparing its locus in the HRD only to the endpoint luminosities of the evolutionary tracks. Murphy et al. (2011) analyzed the stellar populations around the progenitor and found that, if the YSG had indeed vanished, then the progenitor likely had $M_{\text{initial}} \approx 13 M_{\odot}$, in agreement with Maund et al.

Bersten et al. (2012) subsequently performed hydrodynamical modeling of the existing light curves of SN 2011dh. In particular, they showed that a more extended progenitor (with radius $R \approx 200 R_{\odot}$) was necessary to account for the post-shock-breakout thermal cooling and luminosity decline within the first ~ 4 days after explosion, indicated by the early g' -band data from Arcavi et al. (2011). This implies that the progenitor star at explosion was a supergiant with a low-mass H envelope ($\sim 0.1 M_{\odot}$). Bersten et al. concluded from their models that the progenitor’s initial mass was consistent with $12\text{--}15 M_{\odot}$. The He core mass in the models was $\sim 4 M_{\odot}$, which, as Bersten et al. pointed out, is more consistent with the lower core mass expected from an interacting binary model than with a single-star progenitor model. However, the presence of a putative companion was entirely hidden by the light from the supergiant; both Maund et al. (2011) and Van Dyk et al. (2011) showed that the observed spectral energy distribution of the supergiant could account for all of the flux in each *HST* band, including the ultraviolet (UV) F336W band.

Benvenuto et al. (2013) continued exploring the binary scenario. For assumed initial masses of $16 M_{\odot}$ for the YSG primary (donor) star and $10 M_{\odot}$ for the secondary (a mass, and therefore luminosity, low enough to allow the secondary to remain undetected even in the pre-SN UV image), and an initial orbital period of 125 d, these authors found that, through three episodes of mass transfer, the primary explodes with properties similar to those observed for the identified YSG and the secondary remains near a hot zero-age main sequence (ZAMS) temperature and luminosity. The mass, temperature, and luminosity of the secondary were all found to increase as the mass-transfer efficiency in the model interacting binary system was increased.

Ultimately, the key to determining the nature of the progenitor is to observe the SN at sufficiently late times to reveal that the progenitor no longer is there. This

sort of analysis has been conducted in recent years to good effect by Maund & Smartt (2009; for SNe 1993J and 2003gd), Gal-Yam & Leonard (2009; for SN 2005gl), Maund et al. (2013; in particular, for SNe 2004A, 2005cs, and 2006my), and Van Dyk (2013; for SN 2008bk). In this *Letter* we show that the YSG at the position of SN 2011dh has, in fact, disappeared (see also Van Dyk et al. 2013, where we initially announced this discovery). We also present multi-band photometry for the SN from day 5 to day 70 using the 0.76 m Katzman Automatic Imaging Telescope (KAIT; Filippenko et al. 2001) at Lick Observatory. UT dates are used throughout (i.e., UTC, which is an approximation for UT1).

2. OBSERVATIONS AND ANALYSIS

We observed SN 2011dh on 2013 March 2.44 (at age ~ 641 days) with *HST* using the Wide Field Camera 3 (WFC3) UVIS channel and filters F555W and F814W. These observations are part of our Cycle 20 Snapshot program GO-13029 (PI: A. V. Filippenko). We display in Figure 1b the SN as seen in F814W. For comparison we show in panel (a) the *HST* ACS F814W image of the progenitor from 2005, with the same scale and orientation, and approximately the same contrast; the figure is similar to the one presented by Van Dyk et al. (2011; their Fig. 1).

We extracted photometry from the WFC3 images using Dolphot v2.0 (Dolphin 2000). We present the *HST* flight-system magnitudes for the SN in Table 1. We have also remeasured photometry for the progenitor from the 2005 *HST* ACS and WFPC2 images presented by Van Dyk et al. (2011; also see Maund et al. 2011) using this version of Dolphot (we had employed version 1.1 in Van Dyk et al. 2011). We also used the pixel-based charge-transfer-efficiency-corrected ACS images available in the *HST* archive. The star is now measured to be somewhat brighter in all bands, although the differences at F336W and F814W are within the uncertainties (which are rather large at F336W and very small at F814W). This new photometry is presented in Table 1. From the table one can see that the SN in 2013 March is 1.39 and 1.30 mag fainter in F555W and F814W, respectively, than was the YSG.

We have also observed the SN with KAIT in *UBVRI* between 2011 June 3.25 (day ~ 5) and August 8.18 (day ~ 70). We first subtracted away the light from the host galaxy using template images in *BVRI* obtained at the Lick Observatory Nickel 1 m telescope on 2013 March 13 and in *U* on 2013 May 8, when the SN was no longer detectable in these ground-based images. The templates were astrometrically registered, rescaled to match the pixel size of the KAIT images, and sky-background matched before subtraction. Point-spread function (PSF) photometry was applied using the DAOPHOT (Stetson 1987) package from IDL Astronomy User’s Library⁶. The instrumental magnitudes and colors of the SN were transformed at *BVRI* to the standard Johnson-Cousins system using the photometric sequence around the host galaxy presented by Ergon et al. (2013b; their Table A.5), specifically their stars P09-2, P09-3, P09-4, P09-A, and E13-1. At *U* we used only the two brightest of these stars, P09-2 and P09-4. Uncertainties

⁶ <http://idlastro.gsfc.nasa.gov/contents.html> .

in the calibration of our photometry are 0.03 mag in U , 0.02 mag in B , and 0.01 mag in VRI , and these have been added in quadrature with the measurement uncertainties.

We present the KAIT photometry in Table 2 and display the resulting light curves in Figure 2. We also show for comparison the expected light-curve decline rate (0.98 mag [100 day] $^{-1}$) powered by the radioactive decay of ^{56}Co .

Tsvetkov et al. (2012) present $UBVRI$ photometry for the SN over the first 300 days. Marion et al. (2013) and Ergon et al. (2013b) also provide UV-to-infrared photometry and spectroscopy of SN 2011dh over its first 34 and 100 days, respectively. Our photometry compares quite well with that of Tsvetkov et al.: differences are $\ll 0.1$ mag for $BVRI$, and our photometry in U agrees very well through maximum light, but is $\lesssim 0.4$ mag brighter post-maximum. A similar favorable comparison also exists with the data from Ergon et al. (2013b), although our B photometry is ~ 0.2 mag brighter after day ~ 38 , and our U photometry is systematically ~ 0.2 mag brighter. The remaining discrepancies in U between our photometry and that of Tsvetkov et al. and Ergon et al. could result from differences in application of a color term, which we did not apply. More significant differences are generally found with the Marion et al. dataset: Our photometry is 0.8–1.0 mag, 0.2–0.4 mag, 0.15–0.2 mag, and 0.2–0.3 mag brighter in U , B , V , and I , respectively, and $\lesssim 0.4$ mag brighter than the *Swift* U photometry (a discrepancy which could result from differences in calibration); the best agreement is in R , with differences of $\ll 0.1$ mag. Overall, we cannot provide an explanation for the differences between our photometry and that presented by Marion et al.

3. DISCUSSION AND CONCLUSIONS

It is evident from our recent *HST* imaging that the YSG has vanished, meaning that this is almost certainly the star that actually exploded, in agreement with the theoretical analyses by Bersten et al. (2012) and Benvenuto et al. (2013), and with the conclusions of Maund et al. (2011) and Horesh et al. (2012). A similar conclusion was reached by Ergon et al. (2013a;b) from their ground-based imaging. Possible loci of the progenitor and its companion in the HRD are shown by Benvenuto et al. (2013). The model YSG progenitor of SN 2011dh from Bersten et al. (2012) has radius $R \approx 200 R_{\odot}$, which is less extended than the progenitor of the best-studied SN IIB 1993J: assuming the inferred absolute V magnitude and K0 spectral type (effective temperature ~ 4200 K, with corresponding bolometric correction from Levesque et al. 2005) for the SN 1993J supergiant progenitor from Van Dyk et al. (2002), that star’s radius was $\sim 580 R_{\odot}$. However, the SN 2011dh progenitor is far more extended than, say, the radius inferred by Chevalier & Soderberg (2010; $\sim 10^{11}$ cm) for the SN IIB 2008ax compact progenitor (see, however, Horesh et al. 2012 on the uncertainties in distinguishing between compact and extended progenitors based on radio data alone). We speculate that the origin of compact versus extended progenitors of SNe IIB, if this distinction actually exists, may arise in the initial conditions of the binary system (assuming the binary hypothesis applies

for these SNe) and the extent of mass exchange between the components. A more complete discussion of SN IIB progenitors is beyond the scope of this *Letter*.

We interpolate in Figure 2 between the end of our photometric coverage of the SN with KAIT to the *HST* WFC3 data points. The behavior of the light curves shows that the SN light declined over ~ 641 days more rapidly (~ 0.015 mag day $^{-1}$ in V and I) than expected from ^{56}Co decay, possibly as a result of increasing transparency of the SN ejecta to the γ -rays emitted from the decay (e.g., Arnett & Fu 1989) or from dust formation.

We detect nebular emission lines from the SN in recent optical spectra; Shivvers et al. (2013) present our analysis of them and discuss implications for the nature of the progenitor star. These spectra show that light from the SN is still dominant at the time of the WFC3 observations. The SN is therefore currently too bright for any binary companion of the progenitor to be detected.

However, we can estimate the earliest date at which the companion, if it exists, could become visible. If we adopt the mass-transfer efficiency of 0.25 from Benvenuto et al. (2013; their Table 3), the secondary has $T_{\text{eff}} \approx 30000$ K, $L_{\text{bol}} = 10^{4.13} L_{\odot}$, and surface gravity $\log g \approx 4.3$ (essentially that of a late O- or early B-type supergiant). Assuming a bolometric correction for a supergiant at this temperature from Flower (1996), an M51 distance of 8.4 Mpc from Vinkó et al. (2012), and an extinction $A_V < 0.25$ mag (adopting the Galactic foreground contribution from Schlafly & Finkbeiner 2011 and the upper limit on the host-extinction contribution from Arcavi et al. 2011, with $R_V = 3.1$), we find that the secondary’s brightness would be $V \lesssim 27.2$ mag. (We note that Bersten et al. 2012 also estimate that the progenitor’s companion should have a visual magnitude of ~ 26 –27.) Given the current decline rate of the SN, we estimate that a surviving companion might become visible at day ~ 900 — that is, as early as 2013 mid-November. Furthermore, given the expected high effective temperature of the surviving companion, a search for this star is optimized in the UV, since the star’s light should dominate at these wavelengths. If the SN in the U band has been declining at the same rate as in V and I , then by day ~ 900 the SN should have become quite faint, at $U \approx 29$ mag. (One caveat here is that the post-maximum U -band light curves shown by Tsvetkov et al. 2012 and especially Ergon et al. 2013b appear to flatten out up to day ~ 100 .) Also, from Benvenuto et al. (2013), if the mass-transfer efficiency (essentially a free parameter) is higher, detection would be possible sooner, since the star should be hotter and more luminous; however, if it is lower, we may have to wait longer to detect the star.

Finally, we note that no obvious, large-scale light echo has yet appeared in the 2013 *HST* images. Assuming the VEGAMAG zero point for WFC3/UVIS⁷ and a plate scale of $0''.04$ pixel $^{-1}$, we place a 3σ upper limit on the surface brightness of an extended echo at F555W of $\gtrsim 21.6$ mag arcsec $^{-2}$. (We also cannot rule out that a more compact echo, within the image PSF, is contributing to the observed SN flux.) However, the extended echoes around the SN IIB 1993J were not de-

⁷ http://www.stsci.edu/hst/wfc3/phot_zp_lbn .

TABLE 1
HST PHOTOMETRY AT THE POSITION OF SN 2011DH^a

Epoch	F336W (mag)	F435W (mag)	<i>B</i> (mag)	F555W (mag)	<i>V</i> (mag)	F658N (mag)	F814W (mag)	<i>I</i> (mag)
2005	23.380(283)	22.368(005)	22.380	21.813(006)	21.759	21.166(017)	21.211(005)	21.203
2013	23.198(019)	22.507(022)	...

^a Uncertainties (1σ) are given in parentheses as millimagnitudes.

tected until ~ 8 yr after explosion (Sugerman & Crotts 2002; Liu, Bregman, & Seitzer 2003; echoes were not detectable ~ 2 yr post-explosion). So, it is possible we may still see one or more echoes emerge in future *HST* images of SN 2011dh, particularly in the UV and blue bands.

This work is based in part on observations made with the NASA/ESA *Hubble Space Telescope*, obtained from the Data Archive at the Space Telescope Science Institute (STScI), which is operated by the Association of Universities for Research in Astronomy (AURA), Inc., under NASA contract NAS 05-26555. KAIT and its ongoing research were made possible by donations from Sun

Microsystems, Inc., the Hewlett-Packard Company, AutoScope Corporation, Lick Observatory, the NSF, the University of California, the Sylvia & Jim Katzman Foundation, and the TABASGO Foundation. Support for this research was provided by NASA through grants AR-12623 and GO-13029 from STScI. A.V.F. and his group at UC Berkeley also wish to acknowledge generous support from Gary and Cynthia Bengier, the Richard and Rhoda Goldman Fund, the Christopher R. Redlich Fund, the TABASGO Foundation, and NSF grant AST-1211916.

Facilities: HST(ACS), HST(WFC3), Lick:KAIT.

REFERENCES

- Arcavi, I., Gal-Yam, A., Yaron, O., et al. 2011, *ApJ*, 742, L18
 Arnett, W. D., & Fu, A. 1989, *ApJ*, 340, 396
 Benvenuto, O. G., Bersten, M. C., & Nomoto, K. 2013, *ApJ*, 762, 74
 Bersten, M. C., Benvenuto, O. G., Nomoto, K., et al. 2012, *ApJ*, 757, 31
 Bietenholz, M. F., Brunthaler, A., Soderberg, A. M., et al. 2012, *ApJ*, 751, 125
 Campana, S., & Immler, S. 2012, *MNRAS*, 427, L70
 Chevalier, R. A., & Soderberg, A. M. 2010, *ApJ*, 711, L40
 Chornock, R., Filippenko, A. V., Li, W., et al. 2011, *ApJ*, 739, 41
 Claeys, J. S. W., de Mink, S. E., Pols, O. R., Eldridge, J. J., & Baes, M. 2011, *A&A*, 528, A131
 Dessart, L., & Hillier, D. J. 2011, *MNRAS*, 410, 1739
 Dolphin, A. E. 2000, *PASP*, 112, 1383
 Ergon, M., Sollerman, J., Fraser, M., et al. 2013b, *A&A*, submitted (arXiv:1305.1851)
 Ergon, M., Sollerman, J., Pursimo, T., et al. 2013a, *The Astronomer's Telegram*, 4912, 1
 Falk, S. W., & Arnett, W. D. 1977, *ApJS*, 33, 515
 Filippenko, A. V. 1997, *ARA&A*, 35, 309
 Filippenko, A. V., Li, W. D., Treffers, R. R., & Modjaz, M. 2001, in *Small-Telescope Astronomy on Global Scales*, ed. W. P. Chen, C. Lemme, & B. Paczyński (San Francisco: ASP), 121
 Flower, P. J. 1996, *ApJ*, 469, 355
 Fraser, M., Ergon, M., Eldridge, J. J., et al. 2011, *MNRAS*, 417, 1417
 Gal-Yam, A., & Leonard, D. C. 2009, *Nature*, 458, 865
 Griga, T., et al. 2011, *CBET* 2736
 Horesh, A., Stockdale, C., Fox, D. B., et al. 2012, arXiv:1209.1102
 Krauss, M. I., Soderberg, A. M., Chomiuk, L., et al. 2012, *ApJ*, 750, L40
 Levesque, E. M., Massey, P., Olsen, K. A. G., et al. 2005, *ApJ*, 628, 973
 Li, W., & Filippenko, A. V. 2011, *CBET* 2736
 Li, W., Leaman, J., Chornock, R., et al. 2011, *MNRAS*, 412, 1441
 Liu, J.-F., Bregman, J. N., & Seitzer, P. 2003, *ApJ*, 582, 919
 Marion, G. H., Vinko, J., Kirshner, R. P., et al. 2013, *ApJ*, submitted (arXiv:1303.5482)
 Matheson, T., Filippenko, A. V., Barth, A. J., et al. 2000, *AJ*, 120, 1487
 Maund, J. R., & Smartt, S. J. 2009, *Science*, 324, 486
 Maund, J. R., Smartt, S. J., Kudritzki, R. P., Podsiadlowski, P., & Gilmore, G. F. 2004, *Nature*, 427, 129
 Maund, J. R., Fraser, M., Ergon, M., et al. 2011, *ApJ*, 739, L37
 Maund, J., Reilly, E., & Mattila, S. 2013, *MNRAS*, submitted (arXiv:1302.7152)
 Murphy, J. W., Jennings, Z. G., Williams, B., Dalcanton, J. J., & Dolphin, A. E. 2011, *ApJ*, 742, L4
 Pastorello, A., Kasliwal, M. M., Crockett, R. M., et al. 2008, *MNRAS*, 389, 955
 Podsiadlowski, P., Hsu, J. J. L., Joss, P. C., & Ross, R. R. 1993, *Nature*, 364, 509
 Richmond, M. W., Treffers, R. R., Filippenko, A. V., & Paik, Y. 1996, *AJ*, 112, 732
 Sasaki, M., & Ducci, L. 2012, *A&A*, 546, A80
 Schlafly, E. F., & Finkbeiner, D. P. 2011, *ApJ*, 737, 103
 Shivvers, I., Mazzali, P., Silverman, J. M., et al. 2013, *MNRAS*, submitted
 Smartt, S. J., Maund, J. R., Hendry, M. A., et al. 2004, *Science*, 303, 499
 Smith, N., Li, W., Filippenko, A. V., & Chornock, R. 2011, *MNRAS*, 412, 1522
 Soderberg, A. M., Margutti, R., Zauderer, B. A., et al. 2012, *ApJ*, 752, 78
 Stetson, P. B. 1987, *PASP*, 99, 191
 Sugerman, B. E. K., & Crotts, A. P. S. 2002, *ApJ*, 581, L97
 Taubenberger, S., Navasardyan, H., Maurer, J. I., et al. 2011, *MNRAS*, 413, 2140
 Tsvetkov, D. Yu., Volkov, I. M., Sorokina, E., et al. 2012, *Peremennye Zvezdy*, 32, 6
 Van Dyk, S. D. 2013, *AJ*, 146, 24
 Van Dyk, S. D., Cenko, S. B., Poznanski, D., et al. 2012b, *ApJ*, 756, 131
 Van Dyk, S. D., Davidge, T. J., Elias-Rosa, N., et al. 2012a, *AJ*, 143, 19
 Van Dyk, S. D., Filippenko, A. V., Fox, O., et al. 2013, *The Astronomer's Telegram*, 4850, 1
 Van Dyk, S. D., Garnavich, P. M., Filippenko, A. V., et al. 2002, *PASP*, 114, 1322
 Van Dyk, S. D., Li, W., Cenko, S. B., et al. 2011, *ApJ*, 741, L28
 Vinkó, J., Takáts, K., Szalai, T., et al. 2012, *A&A*, 540, A93
 Wheeler, J. C., & Swartz, D. A. 1993, *Space Sci. Rev.*, 66, 425
 Woosley, S. E., Eastman, R. G., Weaver, T. A., & Pinto, P. A. 1994, *ApJ*, 429, 300

TABLE 2
KAIT PHOTOMETRY OF SN 2011DH^a

JD-2,400,000	<i>U</i> (mag)	<i>B</i> (mag)	<i>V</i> (mag)	<i>R</i> (mag)	<i>I</i> (mag)
55715.75	14.82(08)	15.33(08)	14.82(05)	14.56(05)	14.37(03)
55719.77	14.39(07)	14.49(08)	13.95(06)	13.62(06)	13.60(05)
55720.73	14.17(07)	14.36(09)	13.67(05)	13.43(05)	13.40(04)
55721.70	...	14.15(09)	13.52(08)	13.28(06)	13.20(03)
55722.72	...	14.00(09)	13.30(05)	13.05(06)	13.02(04)
55723.73	...	13.75(07)	13.17(05)	12.92(04)	12.88(04)
55725.85	...	13.54(06)
55726.72	...	13.59(07)	12.86(04)	12.68(04)	12.57(04)
55728.72	13.50(13)	13.54(08)	12.78(05)	12.56(06)	12.42(03)
55729.73	13.42(07)	13.61(09)	12.66(03)	12.51(06)	12.36(02)
55731.73	13.42(06)	13.28(02)	12.57(02)	12.34(02)	12.23(02)
55738.72	...	13.80(04)	12.84(04)	12.42(03)	12.17(03)
55748.73	15.84(09)	14.93(07)	13.64(03)	13.00(03)	12.62(03)
55751.70	15.99(09)	14.99(06)	13.89(09)	13.25(08)	12.74(05)
55754.72	13.97(06)	13.36(08)	12.86(05)
55757.70	...	15.26(05)	14.05(06)	13.34(03)	12.89(02)
55760.72	16.14(08)	15.31(06)	14.08(03)	13.47(05)	12.98(02)
55763.70	...	15.26(05)	14.16(04)	13.55(05)	13.05(04)
55766.72	...	15.32(04)	14.24(05)	13.61(05)	13.14(04)
55769.72	...	15.42(05)	14.31(04)	13.67(04)	13.18(04)
55772.71	...	15.42(05)	14.34(04)	13.79(06)	13.24(06)
55775.71	14.38(03)	13.79(04)	...
55781.68	16.23(10)	15.47(05)	14.46(05)	13.95(06)	13.38(04)

^a Uncertainties (1σ) are given in parentheses as hundredths of a magnitude.

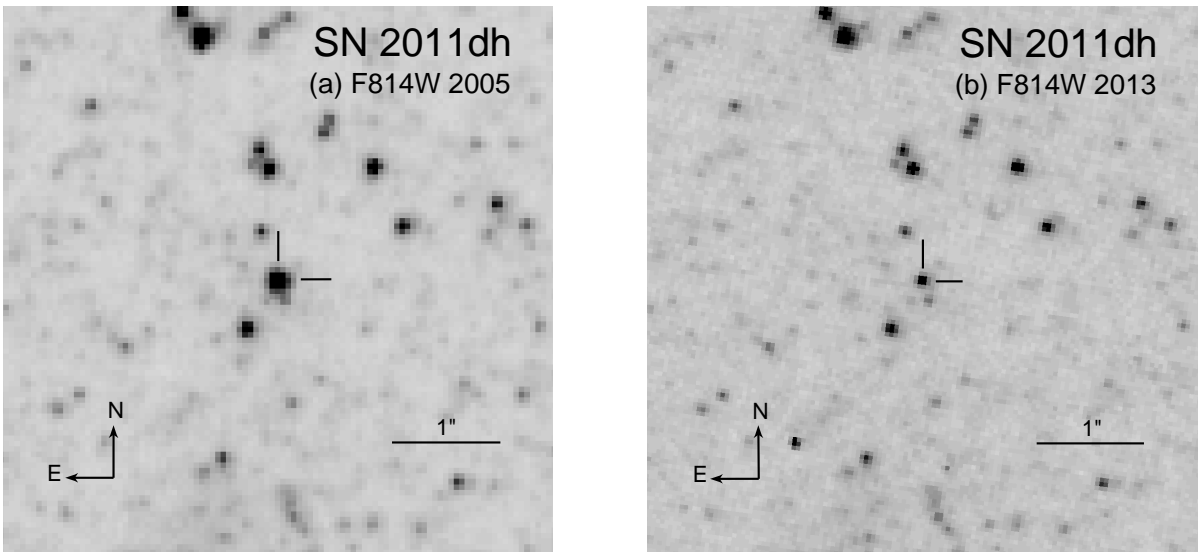


FIG. 1.— (a) A portion of the archival *HST* ACS F814W image of M51 from 2005; the progenitor of SN 2011dh is indicated by *tickmarks*. (b) A portion of the *HST* WFC3 F814W image from 2013, to the same scale and orientation, and approximately the same contrast level; the SN is also indicated by *tickmarks*. North is up, and east is to the left.

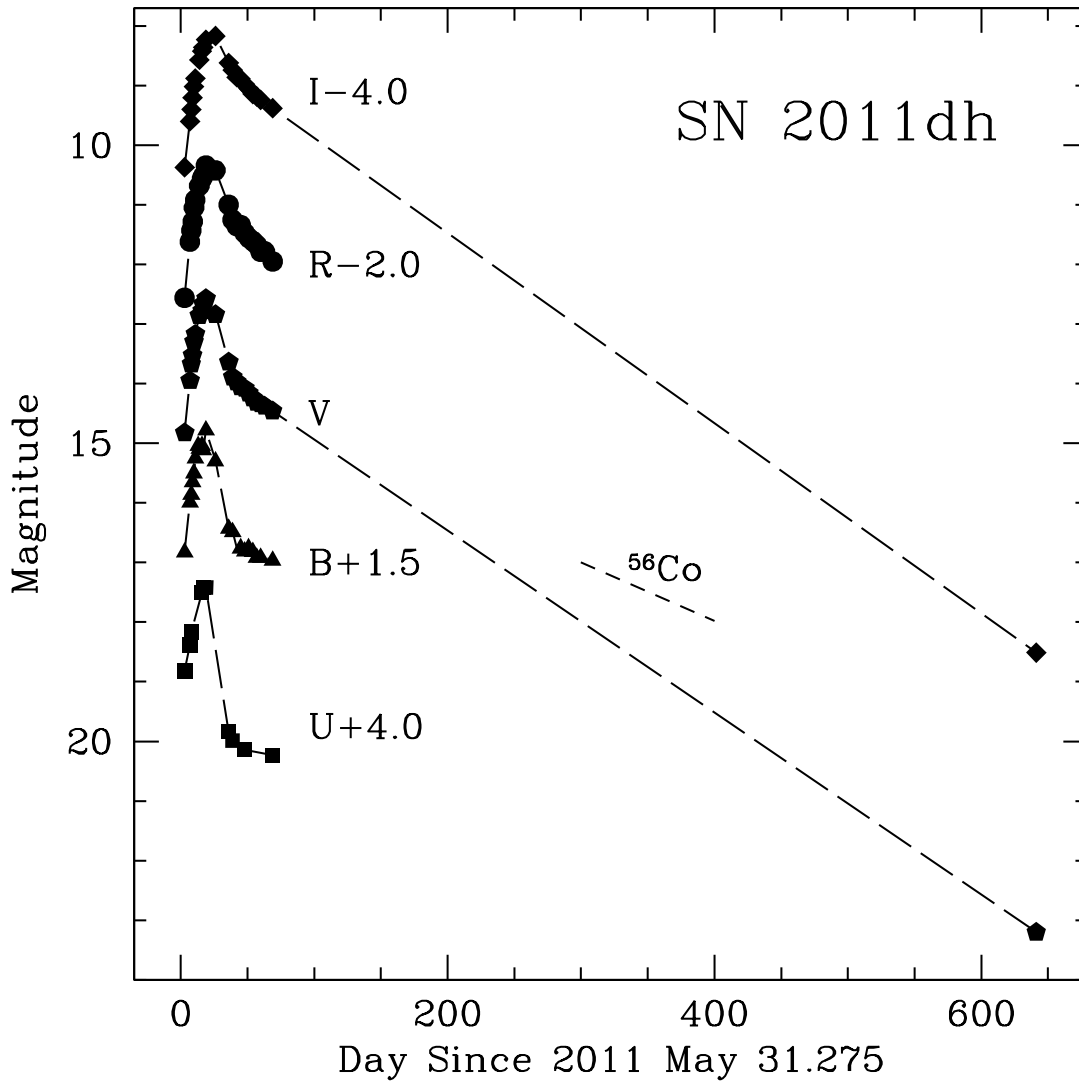


FIG. 2.— Light curves of SN 2011dh, including data points from KAIT and *HST*. Also shown is the expected decline rate from the radioactive decay of ^{56}Co (short-dashed line). We interpolate between the last data points with KAIT to the *HST* data points with the long-dashed line. The *HST* WFC3 F555W and F814W are assumed to be $\sim V$ and $\sim I$ bands.