

SURVEY OF NEARBY FGK STARS AT 160 μm WITH *SPITZER*

ANGELLE TANNER^{1,2}, CHARLES BEICHMAN³, GEOFF BRYDEN², CAREY LISSE⁴, AND SAMANTHA LAWLER⁵

¹ Department of Physics and Astronomy, Georgia State University, Atlanta, GA 30302-4106, USA; angelle.tanner@gmail.com

² Jet Propulsion Lab, 4800 Oak Grove Dr., Pasadena, CA 91109, USA

³ NASA Exoplanet Science Institute, Caltech, 770 S. Wilson Ave., Pasadena, CA 91125, USA

⁴ Johns Hopkins University—Applied Physics Laboratory, SD/SRE, MP3-W155, 7707 Montpelier Road Laurel, MD 20723, USA

⁵ Astronomy Department, Van Vleck Observatory, Wesleyan University, Middletown, CT 06459, USA

Received 2008 November 11; accepted 2009 August 13; published 2009 September 21

ABSTRACT

The *Spitzer Space Telescope* has advanced debris disk science tremendously with a wealth of information on debris disks around nearby A, F, G, K, and M stars at 24 and 70 μm with the MIPS photometer and at 8–34 μm with IRS. Here we present 160 μm observations of a small subset of these stars. At this wavelength, the stellar photospheric emission is negligible and any detected emission corresponds to cold dust in extended Kuiper Belt analogs. However, the *Spitzer* 160 μm observations are limited in sensitivity by the large beam size which results in significant “noise” due to cirrus and extragalactic confusion. In addition, the 160 μm measurements suffer from the added complication of a light leak next to the star’s position whose flux is proportional to the near-infrared flux of the star. We are able to remove the contamination from the leak and report 160 μm measurements or upper limits for 24 stars. Three stars (HD 10647, HD 207129, and HD 115617) have excesses at 160 μm that we use to constrain the properties of the debris disks around them. A more detailed model of the spectral energy distribution of HD 10647 reveals that the 70 and 160 μm emission could be due to small water ice particles at a distance of 100 AU, consistent with *Hubble Space Telescope* optical imaging of circumstellar material in the system.

Key words: infrared: stars – planetary systems

1. INTRODUCTION

Surveys of nearby main-sequence stars with the *Spitzer Space Telescope* have produced a new sample of debris disks which will be studied for years to come. Since Poynting–Robinson (P–R) drag, radiation pressure, and wind drag⁶ remove dust from the disk, the dust in debris disk systems must be replenished—presumably through collisions between larger bodies, possibly remnant planetesimals that were the building blocks of full-fledged planets. At 70 μm *Spitzer* MIPS photometry is sensitive to dust emission which is more than 5–10 times more luminous than that seen in our own solar system with excesses analogous to emission from our Kuiper Belt occurring in $\sim 15\%$ of main-sequence stars (Bryden et al. 2006). At 8–14 μm *Spitzer* is sensitive to dust emission which is more than 1000 times more luminous than that seen in our own solar system and excesses analogous to emission from our own asteroid the Kuiper Belt are found to occur in roughly 1%–2% of main-sequence stars (Beichman et al. 2006). This paper focuses on the detection of excesses at 160 μm , thus probing the properties of Kuiper Belt analogs around these stars.

Most, if not all, published *Spitzer* debris disk surveys have focused on either IRS spectra (14–34 μm) or MIPS 24 and 70 μm photometry with several surveys reporting 160 μm data for young stars (Rebull et al. 2008; Cieza et al. 2008). While the 24 and 70 μm results suggest that 160 μm observations should often show excess emission, *Spitzer* is much less sensitive at this wavelength due to confusion from extragalactic sources in its large beam and to an artifact in the data known as “the leak.” This paper presents the results of our analysis of the 160 μm data taken as part of a *Spitzer* survey of nearby main-sequence stars. Basic debris properties are derived from models

of the spectral energy distribution (SED) of those stars with excesses at 160 μm . Section 2 briefly discusses the target sample considered in the study, Section 3 reviews the reduction of the images, Section 4 discusses the analysis used to remove the leak and determine the 160 μm photometry, Section 5 summarizes the statistics of our findings and SED models of the data, and Section 6 reviews the implications of our results on the overall properties of the disks around mature stars.

2. SAMPLE

The primary sample of stars analyzed in this paper (Table 1) originates from the collection of mature FGK stars observed with MIPS at 24 and 70 μm (Beichman et al. 2005; Bryden et al. 2006, program identification (PID) # 41). To aid with the analysis of the leak, we also include 13 bright stars observed at 160 μm as part of an M dwarf program (G. Rieke, PID 52) or in a MIPS calibration program (B. Latter, PID 1709). There were no criteria on the spectral type of the stars used to model the leak since they are meant to be bright point-spread function (PSF) templates and the 160 μm flux originates from the Rayleigh Jeans portion of their blackbody spectra. Tables 1 and 2 list the science targets and calibration stars.

3. OBSERVATIONS AND DATA REDUCTION

All *Spitzer* observations were made between 2003 December and 2006 March with integration times of 3 and 10 s. The data reduction is based on the DAT software developed by the MIPS instrument team (Gordon et al. 2005) and is similar to that performed on the 24 and 70 μm data (Beichman et al. 2006; Trilling et al. 2008; Bryden et al. 2006). We used images processed beyond the standard DAT software and then mosaicked from individual frames with half pixel subsampling (Stansberry et al. 2007). The resulting pixel scale is $8'' \text{ pixel}^{-1}$. The calibration factor of $0.968 \mu\text{Jy arcsec}^{-2} \text{ DN}^{-1} \text{ s}^{-1}$ and the

⁶ Some studies suggest that stellar wind drag could be the dominant force in removing grains from debris disks around M and K dwarfs (Chen et al. 2006; Plavchan et al. 2009).

Table 1
Stars in the 160 μm Sample

Star	SpTy	K_S	Distance (pc)	PID ^a
HD 166	K0Ve	6.13	13.70	41
HD 10476	K1V	5.20	7.47	41
HD 10647 ^b	F9V	5.52	17.35	716
HD 13445 ^b	K1V	6.17	10.91	41
HD 17925	K1V	6.00	10.38	41
HD 33262	F7V	4.72	11.65	41
HD 33636	G0	7.06	28.69	41
HD 37394	K1V	6.23	12.24	41
HD 52265 ^b	G0III-IV	6.30	28.07	41
HD 72905	G1.5Vb	5.65	14.27	41
HD 76151	G2V	6.00	17.09	41
HD 82943 ^b	G0	6.54	27.46	41
HD 114783 ^b	K0	7.57	20.43	41
HD 115617	G5V	4.74	8.53	41
HD 117176	G5V	5.00	18.11	41
HD 118972	K2V	6.93	15.61	41
HD 128311	K0V	7.51	16.57	41
HD 145675	K0V	6.67	18.15	41
HD 149661	K2V	5.76	9.78	41
HD 177830 ^b	K0	7.18	59.03	41
HD 185144	K0V	4.70	5.77	41
HD 190007	K4V	7.48	13.11	41
HD 207129	G0V	5.58	15.64	41
HD 219134	K3V	5.56	6.53	41
HD 220182	K1V	7.36	21.92	41

Notes.

^a PID = program identification number.

^b Stars with known planet(s).

Table 2
Stars Used for the Leak PSF

Star	SpTy	V	K_S	Distance (pc)	PID ^a
HD 3651	K0V	5.80	4.00 ± 0.04	11.11	41
HD 4628	K2V	5.75	3.68 ± 0.27	7.46	41
HD 27442	K2IVa	4.44	1.75 ± 0.22	18.23	41
HD 80007	A2IV	1.70	1.49 ± 0.24	34.08	1709
HD 88230	K5V	6.61	2.96 ± 0.29	4.87	41
HD 142860	F6IV	3.85	2.70 ± 0.31	11.12	41
HD 166620	K2V	6.37	4.23 ± 0.02	11.10	41
HD 191408	K3V	5.31	3.01 ± 0.60	6.05	41
HD 203608	F6V	4.22	2.97 ± 0.25	9.22	41
HD 209100	K4.5V	4.69	2.24 ± 0.24	3.63	41
HD 216803	K4V	6.48	3.81 ± 0.24	7.64	41
Procyon	F5IV-V	0.34	-0.66 ± 0.32	3.50	52
Sirius	A1V	-1.47	-1.39 ± 0.21	2.64	52

Note.

^a PID = program identification number.

appropriate aperture corrections for the 160 μm MIPS images were taken from Stansberry et al. (2007).

4. ANALYSIS

The 160 μm data suffer from an imaging artifact (a.k.a. the “leak”) that is caused by the reflection within the instrument of near-infrared light onto the MIPS detector (Stansberry et al. 2007; see Figure 1). The leak becomes an issue when looking for excesses around bright stars since the near-IR photosphere is bright compared to the weak 160 μm signal. The leak lies ~ 4 pixels to the $+X$ side of the star’s position on the detector and is close enough to hinder accurate 160 μm flux determinations with aperture photometry.

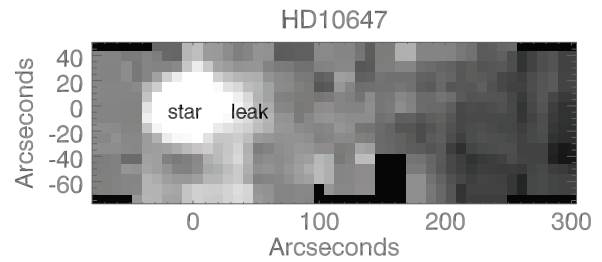


Figure 1. *Spitzer* image of HD 10647 at 160 μm showing the position of the star relative to the leak.

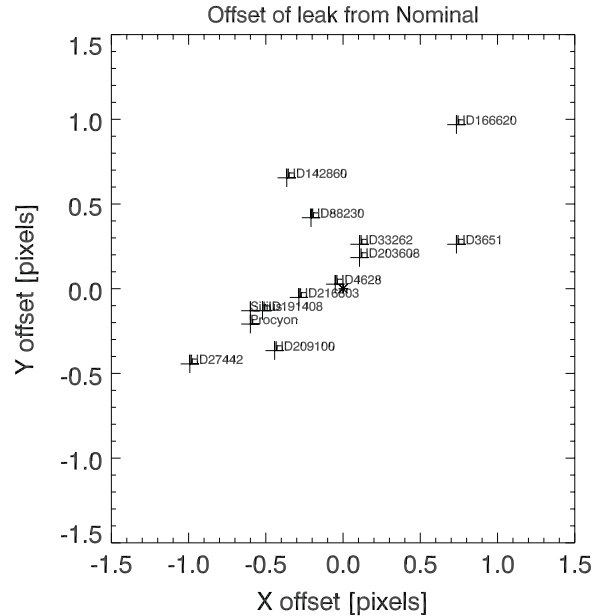


Figure 2. Plot of the variation in the offset in pixels between the leak centroid and the position of the star as estimated from the star’s 24 μm position.

Since the leak is due to the near-infrared light from the star, we can predict the level of the leak emission based on the known near-IR brightness of the star. We utilized archived *Spitzer* observations of a sample of stars which have no 160 μm or shorter wavelength excess and which are bright in the near-infrared (see Table 2). These stars vary in brightness from $K_S = -1.39$ (Sirius) to $K_S = 4.23$ (HD 166620). We assume that the dominant source of flux in the 160 μm image near the position of the star is the leak. The offset of the 160 μm leak from the position of the star, determined within a fraction of an arcsecond from the contemporaneous 24 μm MIPS image, has a position and dispersion of 4.5 ± 1.5 pixels in the X direction and -0.1 ± 1.0 pixels in the Y direction (see Figure 2). The spread in the leak offset is presumably due to differences in the observing parameters of the targets which have been collected from a number of different AORs.

To estimate the flux of the leak we used aperture photometry with an aperture radius of 3 pixels ($24''$) and a sky annulus of 3–5 pixels ($24''$ – $30''$). Figure 3 plots the 160 μm leakage versus the Two Micron All Sky Survey (2MASS) K_S flux for the leak-only stars in our sample. There is a clear dependence between the 160 μm leakage and K band flux with a correlation coefficient of 0.98. The best-fitting line through the data is $F_{\text{leak [mJy]}} = (10.5 \pm 1.0)F_{2.2 \mu\text{m [Jy]}} + 26 \pm 15$. There is no correlation between the leak flux or offset and the $J-K$ color of the star.

To remove the leak from our target sample, we create a “leak” PSF by scaling and averaging the four brightest leak-only

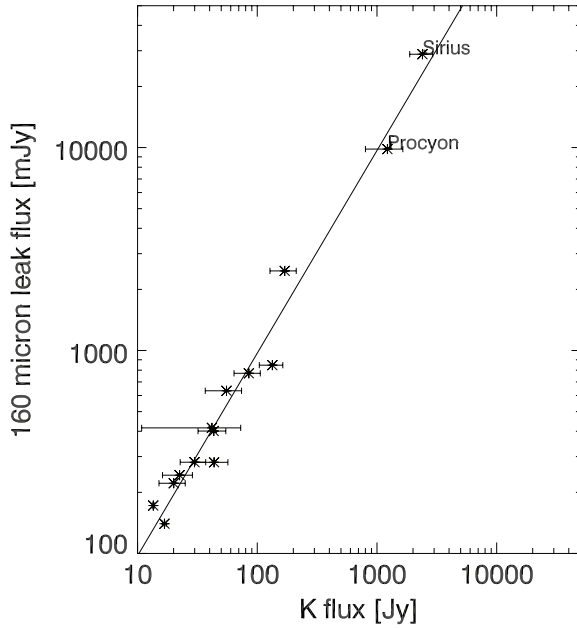


Figure 3. Plot of the K band flux from 2MASS vs. the flux of the leak estimated from a sample of stars with 160 μm flux below *Spitzer* sensitivities. The plot shows a clear correlation between near-infrared flux and peak flux allowing for the potential of removing the leak flux using this correlation as a guide. The best-fitting line which is fit through all data points is $F_{\text{leak [mJy]}} = (10.5 \pm 1.0)F_{2.2 \mu\text{m [Jy]}} + 26 \pm 15$.

images (Sirius, Procyon, HD 80007, and HD 27442). The derived “leak” PSF is shifted to the appropriate position, scaled to the predicted flux and subtracted from the image. Figure 4 (middle pane) shows the result of this subtraction for HD 10647 and HD 207129. In some cases the leak was not fully removed using the scaled PSF. This could be due to large errors in the K_S band flux due to saturation in the 2MASS images as suggested by the K_S error bars shown in Figure 3.

As an alternative method to remove the leak, we employ a cleaning method which subtracts a scaled version of the leak iteratively in order to reduce the signal level in the leak region to match that in the surrounding background. First, a circular region with a radius of 4 pixels at the position of the leak is declared the cleaning area. During the cleaning process, the highest point within the cleaning region is identified and the leak PSF is scaled to 10% of the value of the pixel at that position. This scaled leak PSF is subtracted at this position and then the process is repeated until the rms noise within the cleaning area is at the same level as that in an annulus around the position of the star. Figure 4 (bottom pane) shows the results of the iterative method for HD 10647 and HD 207129. Figure 5 shows the results of the leak removal process for HD 142860 which does not have significant excess emission at 160 μm . These cleaned images show that the leakage is getting reduced to the level of the background using the iterative method. We use the results from both the scaled leak and the iterative cleaning methods in determining the uncertainty in the 160 μm flux.

We performed aperture photometry on the leak-removed and raw images using an aperture of 4 pixels ($32''$) in radius and a sky annulus of 7–8 pixels ($56''$ – $64''$). Figure 6 shows a histogram of the flux measured within the aperture before (empty) and after (diagonal) removal of the leak for all stars in the 160 μm sample. Removing the leak results in a 40% improvement in the flux sensitivity of the data based on the average values of these two distributions. For those stars with no significant 160 μm

Table 3
Stars With No 160 μm Excess

Star	Flux Density Limit (mJy)	70 (μm) excess?
HD 166	<30	yes
HD 17925	<76	yes
HD 33262	<150	yes
HD 33636	<82	yes
HD 37394	<76	yes
HD 52265	<523	yes
HD 72905	<55	yes
HD 76151	<150	yes
HD 82943	<160	yes
HD 117176	<300	yes
HD 118972	<110	yes
HD 128311	<83	yes
HD 10476	<90	no
HD 13445	<20	no
HD 114783	<60	no
HD 145675	<47	no
HD 149661	<87	no
HD 177830	<343	no
HD 185144	<372	no
HD 219134	<1334	no
HD 220182	<60	no

excess, we estimate an upper limit to the 160 μm photometry based on the flux that would be necessary for an excess to be detected given our detection criteria and background noise estimate for each image. Table 3 lists the upper limits for those stars with 70 μm excesses and no 160 μm excesses. Most of these upper limits provide a more stringent constraint on the range of temperatures expected for the cold dust population that would be estimated from solely the 70 μm detection.

5. RESULTS

For this study, we use the criterion that a star has a 160 μm excess if the flux at the position of the star after leak removal and subtraction of the stellar photosphere is 3σ above the background noise in the image. To determine the level of background noise, we first correct for the flux gradient apparent over the length of the MIPS 160 array. The gradient is removed by fitting a line to pixels at both ends of the array and using the slope to create a gradient which is subtracted from the image. The background noise is then estimated from the standard deviation of the counts in eight apertures placed 14 pixels ($122''$) to the right (+X) of the star. Using these criteria, only three stars have significant 160 μm emission after subtraction of the leak: HD 10647, HD 207129, and HD 115617. Table 4 lists the 160 μm flux densities estimated with aperture photometry from the non-leak subtracted image, the image with the K -band scaled leak subtracted and the image with the leak removed iteratively. We also list the background noise flux density and the flux density of the stellar photosphere at 160 μm . Unlike the 24 and 70 μm studies, all detections at 160 μm are dominated by the excess emission above the stellar photosphere.

Figure 7 plots the minimum detectable disk luminosity, L_d/L_* , estimated from the 160 μm excess as a function of stellar effective temperature, T_* . This assumes a single disk temperature which is determined by setting the blackbody emission peak at 160 μm corresponding to a dust temperature of 23 K. The minimum disk luminosity is then the ratio of the total flux determined from this blackbody to the stellar photospheric flux (see Equation (1), where F_{160} is the 160 μm flux and $F_{160,*}$

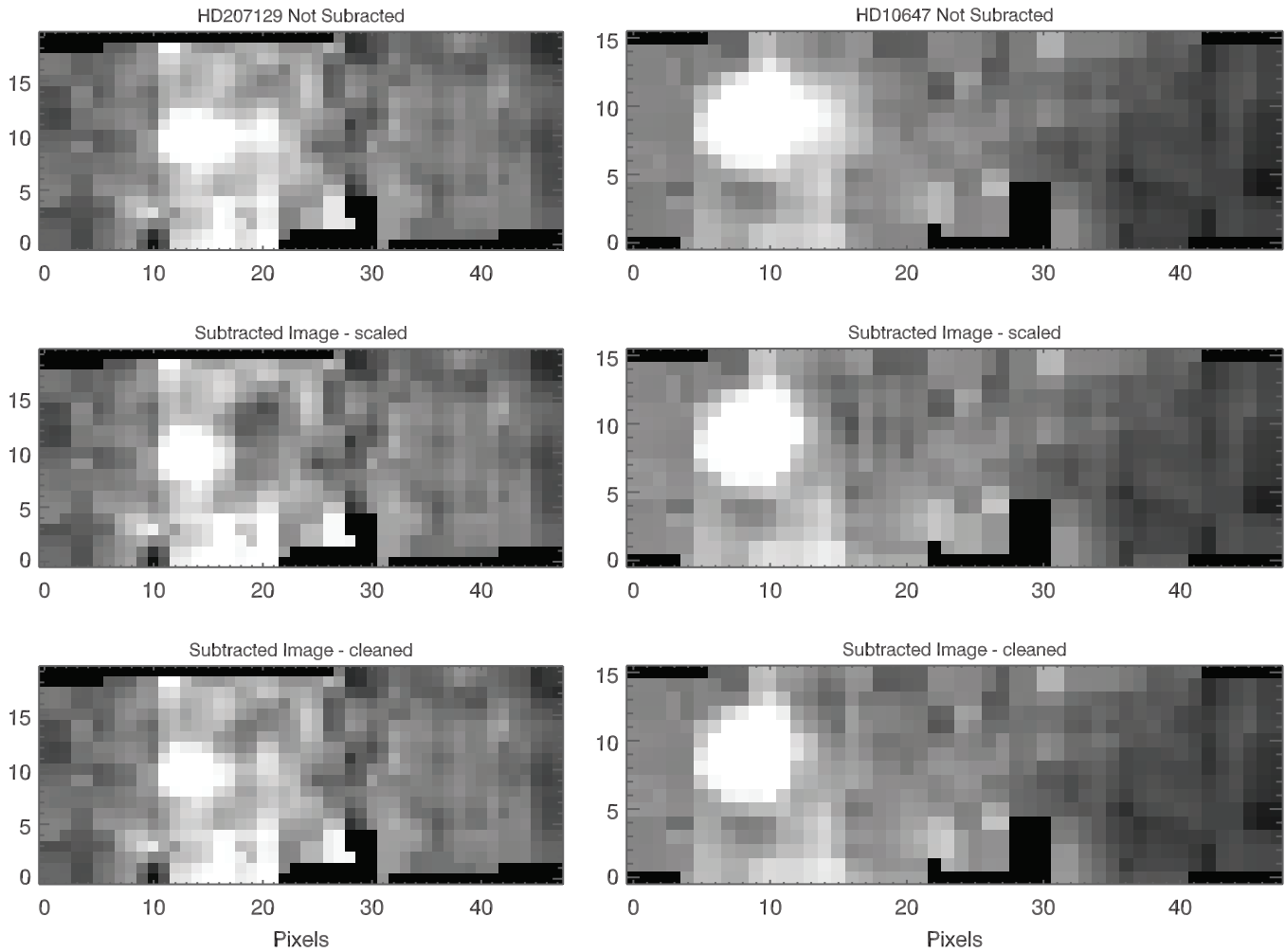


Figure 4. MIPS $160\ \mu\text{m}$ images of HD 10647 and HD 207129 both before (top) and after the leak was removed using the scaled leak (middle) and iterative (bottom) cleaning processes. The plate scale of the images is $8''\ \text{pixel}^{-1}$.

Table 4
Flux Densities for Stars with $160\ \mu\text{m}$ Excesses

Star	Raw ^a (mJy)	Excess-scaled Leak Method ^b (mJy)	Excess-iterative Method ^b (mJy)	Noise ^c (mJy)	Significance ^d (mJy)	Stellar Photosphere ^e (mJy)
HD 10647	498	462	451	50	9.2	3.17
HD 207129	185	152	158	20	7.9	3.45
HD 115617	318	141	89	20	4.5	10.56

Notes.

^a The raw flux represents the combination of the flux from the leak, the stellar photosphere, and excess thermal emission.

^b The “scaled leak method” and “iterative method” represent two different forms of analysis utilized to removed the leak flux prior to performing aperture photometry at the position of the star. The difference in the two methods are described in Section 4.

^c The background noise is estimated from the standard deviation on the flux from eight apertures placed 35 pixels in the $+x$ direction away from the star.

^d The significance given here is defined as the excess thermal flux (sky subtracted) from the iteratively cleaned image over the background noise.

^e Value of the stellar photosphere at $160\ \mu\text{m}$. This has been subtracted from all of the excess flux values.

is the flux of the stellar photosphere at $160\ \mu\text{m}$). Most of these luminosity limits (see Table 5) are an improvement over those provided by $70\ \mu\text{m}$ limits from previous studies (Bryden et al. 2006):

$$\frac{L_{\text{dust min}}}{L_*} = 8 \times 10^{-7} \left(\frac{5600\ \text{K}}{T_*} \right)^3 \frac{F_{160}}{F_{160,*}}. \quad (1)$$

Using these L_d/L_* values, we can provide an estimate of the

dust mass assuming $1\ \mu\text{m}$ radius grains with a density of $3.3\ \text{g cm}^{-3}$ at a distance of 100 AU (Jura et al. 1995; see Table 5).

For those stars with $70\ \mu\text{m}$ excesses and $160\ \mu\text{m}$ upper limits, we can estimate a lower limit for the temperature of the dust component responsible for the excess at these two wavelengths by fitting a blackbody curve to these two data points (see Table 5). Unfortunately, these temperature limits are more indicative of the variations in the background levels of the

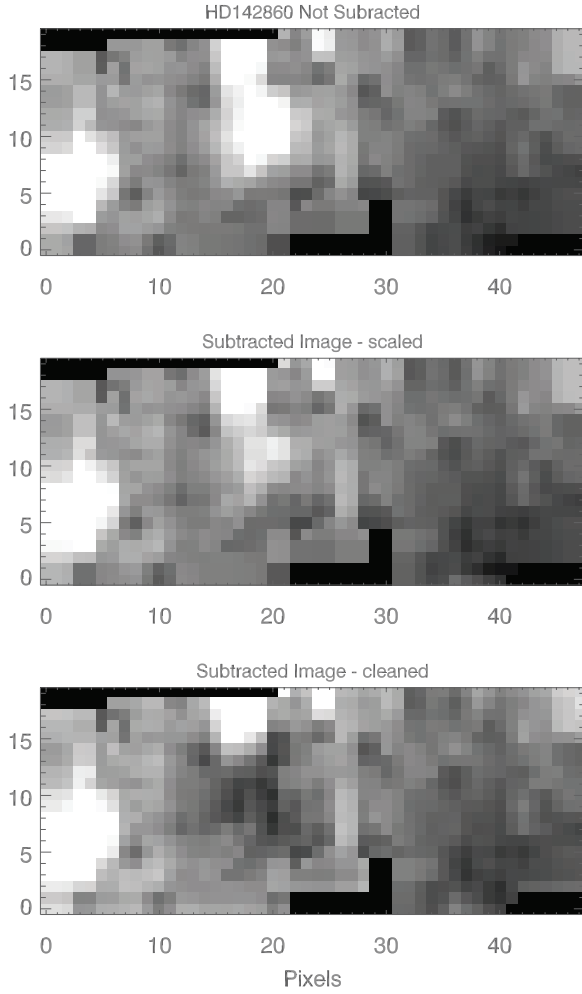


Figure 5. MIPS 160 μm images of HD 142860 before (top) and after the leak was removed using the scaled leak (middle) and iterative (bottom) cleaning processes. In this case, there is no detection at 160 μm but its clear that the leak has been fully removed from the image using the iterative method. The plate scale of the images is $8'' \text{ pixel}^{-1}$.

160 μm images than the properties of the dust. As an example, Figure 8 shows SEDs of HD 17925 and HD 82943 with a blackbody fit to their 70 μm excess and 160 μm upper limit. Equation (2) shows that we can also estimate a limit on L_d/L_* (also in Table 6) in the same manner as for the 160 μm detections

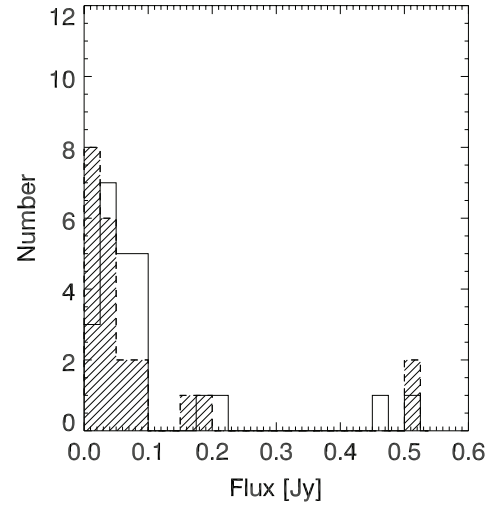


Figure 6. Histogram of the background flux at the positions of the 160 μm stars before (empty) and after (diagonal) leak removal. Removing the leak results in a 40% improvement in the flux sensitivity of the data based on the average values of these two distributions.

but with the 3σ flux limits:

$$\frac{L_{\text{dust}}}{L_*} < 8 \times 10^{-7} \left(\frac{5600 \text{ K}}{T_*} \right)^3 \frac{3 N_{160}}{F_{160,*}} \quad (2)$$

where T_* and $F_{160,*}$ are the stellar effective temperature and flux, respectively, and N_{160} is the 1σ flux upper limit. Finally, we can estimate the smallest amount of dust that could be present to have no 160 μm detection. Using the L_d/L_* lower limits, we can provide a lower limit to the dust mass using the same assumptions for those stars with 160 μm excesses. Table 6 lists these dust masses as fractions of an Earth mass.

5.1. Spectral Energy Distributions

Here we employ simple SED models to fit the 24, 70, and 160 μm MIPS photometry and IRS spectra from previous studies of the three stars with 160 μm excesses. The 24 and 70 μm photometry comes from Trilling et al. (2008) and the IRS data come from either Beichman et al. (2006) or Lawler et al. (2009). All of the stars with 160 μm detections have disks which are resolved at 70 μm (HD 10647, 106 AU (radius); HD 207129, 144 AU; and HD 115617, 97 AU; G. Bryden et al. 2009, in preparation). The 70 μm sizes for HD 10647 and HD 207129 both agree with the *Hubble Space Telescope* (*HST*)

Table 5
Dust Model Results

Star	R_i (AU)	R_o (AU)	T_{dust} (K)	L_d/L_* 10^{-5}	Dust Mass ^a ($10^{-4} M_{\oplus}$)	Dust Composition ^b
HD 10647	6 ± 0.5	150 ± 150	70–40	21.1	3.43	Blackbody
	97 ± 10	140 ± 50	33–27			Silicate - 0.25 μm or water ice
HD 115617	96 ± 5	195 ± 100	55–45	2.6	0.50	Blackbody
	120 ± 20	220 ± 10	24–19			Silicate - 0.25 μm
HD 207129	35 ± 1	45 ± 10	48–44	6.6	0.16	Silicate - 10 μm
	144 ± 1	200 ± 10	24–12			Blackbody

Notes.

^a The dust mass is estimated from the L_d/L_* ratio, a dust density of 3.3 g cm^{-3} , a dust radius of $1 \mu\text{m}$, and a disk radius of 100 AU as defined in Jura et al. (1995).

^b Here, we list the assumed composition and radius (when necessary) of the grains used in the models. We assume either black body grains or silicate grains. The silicate grains can have a radius of $0.25 \mu\text{m}$ (small grains) or $10 \mu\text{m}$ (large grains).

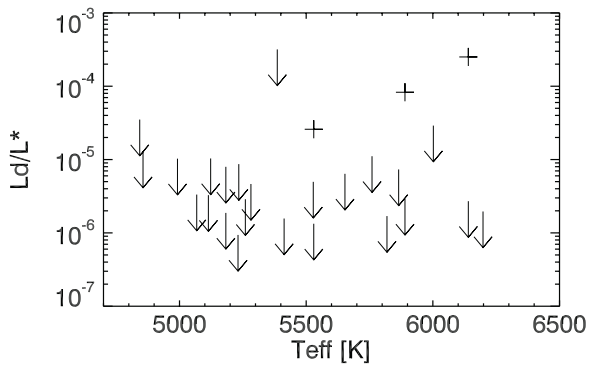


Figure 7. Plot of the limits on L_d/L_* for all stars in the $160\ \mu\text{m}$ sample as a function of stellar effective temperature. The crosses, +, are those stars with detected $160\ \mu\text{m}$ flux. Those stars with non-detections have upper limits in their L_d/L_* values provided by Equation (2).

measurements (Stapelfeldt et al. 2007) which detect a relatively narrow toroidal structure at 90–140 AU using the Advanced Camera for Surveys (ACS).

5.2. Silicates or Black Body Dust Models

To model the debris disk we place the dust in an optically thin annulus around the star and utilize the formalism of Su et al. (2005). The dust temperature varies with the distance, r , from the star as determined from radiative equilibrium. The free parameters in the SED model fits are the inner and outer radii of the dust annulus, r_i and r_o , and the dust density at the inner radius which we later convert to L_d/L_* and then the total dust mass in the system. Also, we make assumptions of the dust composition which affects the shape of the SED. We choose to fit the *Spitzer* data with models incorporating either blackbody grains, small silicate dust grains ($a = 0.25\ \mu\text{m}$), or large silicate dust grains ($a = 10\ \mu\text{m}$), with emission coefficients taken from Laor & Draine (1993). The smallest silicate grains used in our models are bigger than the blowout radius of the grain which depends on the luminosity of the star. Since $10\ \mu\text{m}$ dust grains are primarily affected by Poynting–Robinson drag, we model this disk component with a constant surface density. The $0.25\ \mu\text{m}$ grains, on the other hand, are primarily removed from the disk by radiation pressure resulting in a surface density with a r^{-1} fall off (Su et al. 2005). It should be noted that the stellar

Table 6
Dust Physical Properties for Stars with $160\ \mu\text{m}$ Upper Limits

Star	Dust Temperature ^a (K)	L_d/L_* ^b 10^{-5}	Dust Mass ^c ($10^{-4}\ M_\oplus$)
HD 166	>104	<0.16	< 0.33
HD 17925	>42	<0.33	< 0.68
HD 33262	>27	<0.20	< 0.41
HD 33636	>34	<0.73	< 0.22
HD 37394	>23	<0.80	< 1.51
HD 52265	>21	<2.90	< 6.02
HD 69830	>21	<1.83	< 0.90
HD 72905	>36	<0.17	< 0.35
HD 76151	>25	<0.64	< 1.33
HD 82943	>43	<1.11	< 2.30
HD 117176	>24	<0.50	< 1.03
HD 118972	>29	<1.04	< 2.15
HD 128311	>27	<1.28	< 2.66
HD 10476		<0.19	< 0.39
HD 114783		<1.03	< 2.13
HD 13445		<0.09	< 0.19
HD 145675		<0.33	< 0.69
HD 149661		<0.29	< 0.60
HD 177830		<31.8	< 65.9
HD 185144		<0.46	< 0.96
HD 219134		<3.51	< 7.28
HD 220182		<0.87	< 1.80

Notes.

^a The dust temperature listed here represents the blackbody temperature that reproduces the ratio of the $70\ \mu\text{m}$ flux and $160\ \mu\text{m}$ limit.

^b These values of L_d/L_* come from Equation (2).

^c Upper limits on the dust mass assume the L_d/L_* ratio from the $160\ \mu\text{m}$ limit, a dust density of $3.3\ \text{g cm}^{-3}$, a dust radius of $1\ \mu\text{m}$, and a disk radius of 100 AU (Jura et al. 1995).

wind drag is an additional mechanism for removing dust grains from the disk, especially for K and M dwarfs (Plavchan et al. 2009; Chen et al. 2006). If we include the additional constraint that the $70\ \mu\text{m}$ MIPS photometry must be modeled with a dust component with an inner radius corresponding to the resolved $70\ \mu\text{m}$ radius, then the *Spitzer* data are best fitted with two separate dust components with different dust species.

The properties of the dust derived from the best fits to the *Spitzer* data (the inner and outer radii of the dust annulus,

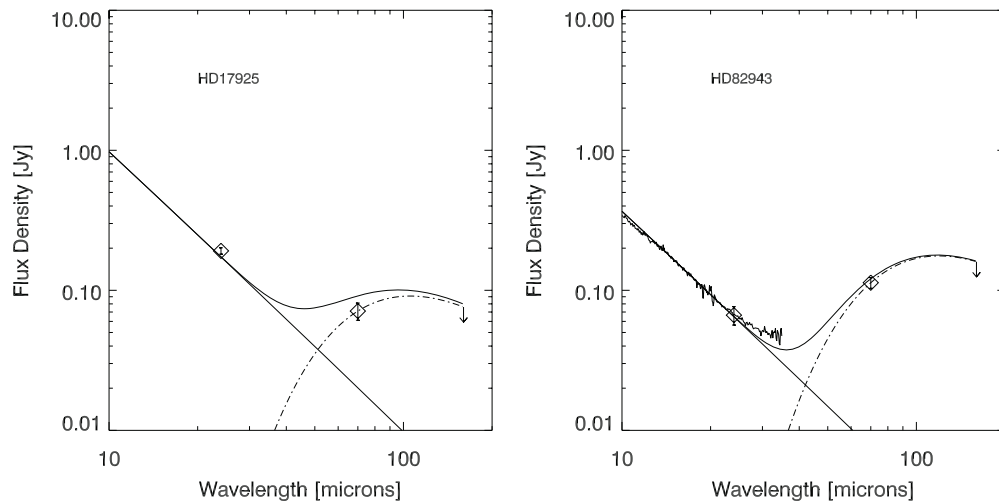


Figure 8. SEDs of HD 17925 and HD 82943 which do not have significant $160\ \mu\text{m}$ excesses. The upper limit in $160\ \mu\text{m}$ flux can still be used to constrain the properties of the disk.

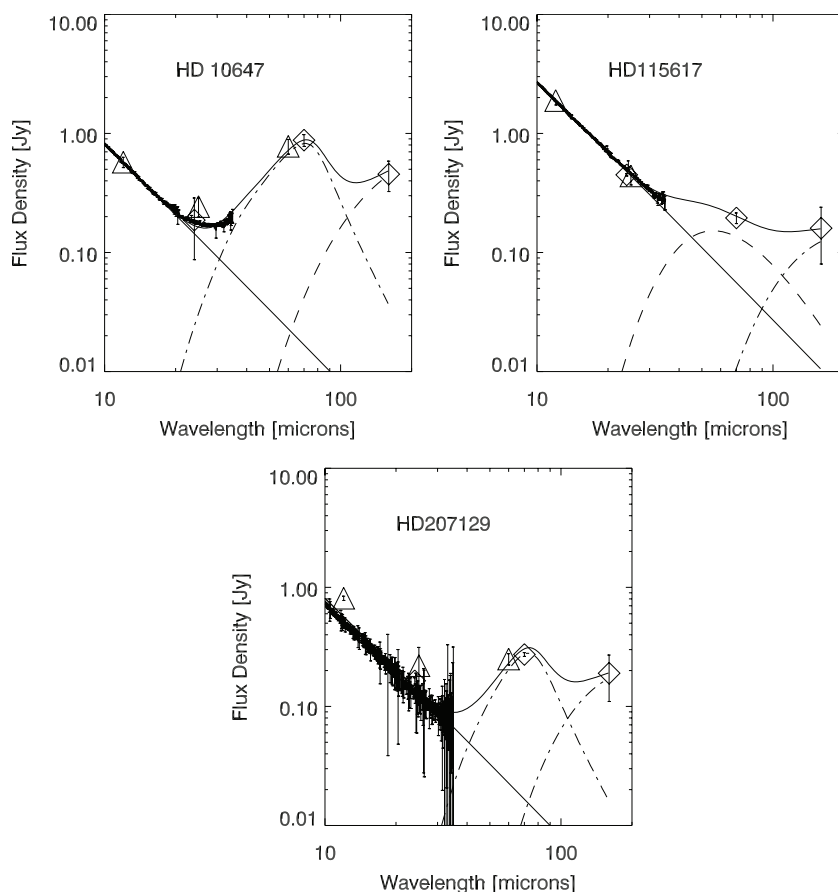


Figure 9. SEDs of those stars with 160 μm excesses. In all cases, these stars also have excesses at 70 μm allowing for a fit to the temperature of the dust. The dust is placed in an annulus around the star with a number density fall off dependent on the dust removal mechanism. The additional constraint of the extent of the dust at 70 μm and the IRS spectra results in the best fit (solid line) being achieved with two separate dust annuli (dotted and dashed lines) of varying composition. The dust temperatures (20–70 K) were estimated assuming radiative equilibrium and depended on the dust composition, stellar luminosity, and distance of the dust from the star). The properties of the dust derived from these SED model fits are listed in Table 5. The triangles are IRAS (25, 60 μm) fluxes and the squares are the MIPS data.

L_d/L_* , and the dust composition) are listed in Table 5 along with derived dust properties such as dust temperature and dust mass. Figure 9 shows the best-fitting SED models for all three stars with 160 μm excesses. The errors on the variables used to fit the SED, the inner and outer dust radius and inner dust density of each dust component, were estimated from the change in their value which produced a variation of one in the χ^2 (Press 2002).

5.3. Icy Dust Models

A more thorough investigation of the SED of HD 10647, based on the primitive solar system dust models of Lisse et al. (2007, 2008) reveals that, after modeling the IRS 5–35 μm warm dust signature, the 70 and 160 μm flux can be modeled by a component of ~ 30 K water ice particles at 100 AU from the star. An enhanced peak in the 70 μm passband occurs due to emission from a strong water ice vibrational feature at 65 μm (see Figure 10). While additional contributions to the dust emission in the IRS portion of the spectrum could be due to silicates, our data set cannot place statistically significant constraints on the abundance of such materials. These SED models do, however, showcase the improvement in our ability to learn about the dust with continuous spectral coverage and direct spatial information. A distance of ~ 100 AU from the primary is consistent with the 90–140 AU location of dust detected in the optical with *HST*/ACS (Stapelfeldt et al. 2007).

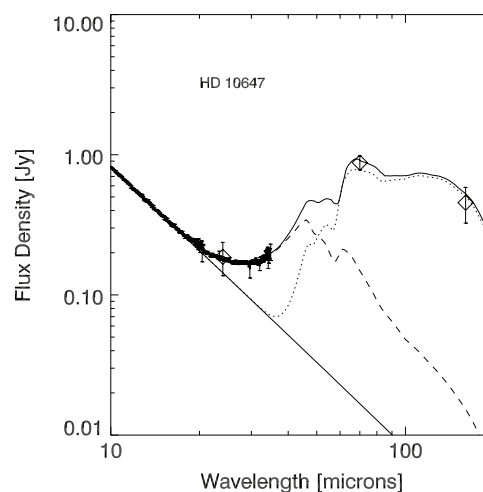


Figure 10. Plot of an additional model of the *Spitzer* data for HD 10647. This model uses 30 K water ice particles to model the 70 and 160 μm emission component (dotted) and ~ 70 K silicates to model the IRS data (dashed). The model has been normalized to the MIPS 24 μm flux.

In addition to the *Spitzer* observations presented here, thermal emission from the HD 10647 circumstellar dust has been studied most recently at 870 μm using the submillimeter LABOCA array on the 12 m APEX telescope in Chile (Liseau et al. 2008). In order to fit the 870 μm flux point of 39 ± 8 mJy for this

star, the dominant (by surface area) water ice particle sizes must be on the order of 1 mm. However, as stated in Liseau et al. (2008), the morphology of this cold component is very broad, on the order of 600 AU FWHM. It is most likely that the material emitting the bulk of the 870 μm emission is at 17 K, and is unassociated with the material constrained to the 100 AU torus. We are unable to fit the 870 μm data point with the water ice SED component at 30 K which is consistent with the hypothesis of an additional 17 K dust component at a distance of ~ 300 AU.

6. DISCUSSION

For this sample we only consider those stars in the original FGK survey (PID41; Beichman et al. 2005; Trilling et al. 2008) with 160 μm data. While all stars with 160 μm excesses also have 70 μm excesses, not all stars with 70 μm excesses have 160 μm excesses. Out of 35 stars in the FGK sample, two have 160 μm excesses. The other one, HD 10647, was included in a separate survey with different goals. Twelve of the 160 μm non-detections have 70 μm excesses. One (HD 10647) of the five stars with known RV planets has a 160 μm excess (20%), compared to 2 out of 31 (6%) of the stars with no known planets. This sample is smaller than the 24/70 μm samples so these percentages suffer from small number statistics. Given the 160 μm sensitivity limits due to confusion noise and the leak, we are generally not sensitive to dust much colder than 25 K and $0.1 \times 10^{-4} M_{\oplus}$ (see Table 5).

A collection of icy dust with a mass of $\sim 4 \times 10^{-4} M_{\oplus}$ at 30 K around HD 10647 is very reasonable with respect to known structures in the solar system. Dust created by interactions in the Saturnian and Uranian systems (such as formed the system's rings) will equilibrate at 60–90 K. Dust created by collisional fragmentation of bodies in the Kuiper Belt (Davis & Farinella 1997; Stern 1995) produces originally toroidal morphologies at local temperatures of 35–45 K. The location of the dust is far removed from the orbit of the reported planet HD 10647b with semimajor axis of 2.1 AU (Schneider 2009) and is not likely to be dynamically coupled to it.

7. CONCLUSIONS

We have analyzed the 160 μm subset of a survey of nearby main-sequence stars with the *Spitzer* IRS and MIPS instruments. After careful analysis of the 160 μm images which suffer from an anomalous flux contaminant, we have found three stars (HD 10647, HD 207129, and HD 115617) with significant excesses in this passband. All of these stars also have excesses at 70 μm and the addition of the 160 μm photometry allows for a constrained estimate of the temperature of the dust as well as its composition. The lack of 160 μm emission for the remaining

stars also sets an improved limit to the amount of cold dust for those sources with 70 μm excesses. In the end, the sensitivity floor of the 160 μm images is set by the background noise due to extragalactic sources.

The *Herschel Space Telescope*, scheduled to launch in 2009, will have about four times better resolution than *Spitzer* and will be ~ 10 times more sensitive at comparable wavelengths, suggesting we might be able to resolve those disks detected at 160 μm . Having the intrinsic size of the debris disks as well as robust fluxes at multiple wavelengths would further constrain the SED models. Those stars with 70 μm excesses and no 160 μm detections are ideal targets as well since there is dust emission at longer wavelengths not detectable with *Spitzer*.

The research described in this publication was carried out at the Jet Propulsion Laboratory, California Institute of Technology, under a contract with the National Aeronautics and Space Administration. This publication makes use of data products from the Two Micron All Sky Survey, which is a joint project of the University of Massachusetts and the Infrared Processing and Analysis Center/California Institute of Technology, funded by the National Aeronautics and Space Administration and the National Science Foundation.

REFERENCES

- Beichman, C. A., et al. 2005, *ApJ*, 622, 1160
 Beichman, C. A., et al. 2006, *ApJ*, 639, 1166
 Bryden, G., et al. 2006, *ApJ*, 636, 1098
 Chen, C. H., et al. 2006, *ApJS*, 166, 351
 Cieza, L. A., Cochran, W. D., & Augereau, J.-C. 2008, *ApJ*, 679, 720
 Davis, D. R., & Farinella, P. 1997, *Icarus*, 125, 50
 Gordon, K. D., et al. 2005, *PASP*, 117, 503
 Jura, M., Ghez, A. M., White, R. J., McCarthy, D. W., Smith, R. C., & Martin, P. G. 1995, *ApJ*, 445, 451
 Laor, A., & Draine, B. T. 1993, *ApJ*, 402, 441
 Lawler, S., et al. 2009, *ApJ*, in press
 Liseau, R., et al. 2008, *A&A*, 480, L47
 Lisse, C. M., Beichman, C. A., Bryden, G., & Wyatt, M. C. 2007, *ApJ*, 658, 584
 Lisse, C. M., Chen, C., Wyatt, M., & Morlok, A. 2008, *ApJ*, 673, 1106
 Plavchan, P., Werner, M. W., Chen, C. H., Stapelfeldt, K. R., Su, K. Y. L., Stauffer, J. R., & Song, I. 2009, *ApJ*, 698, 1068
 Press, W. H. 2002, *Numerical Recipes in C++ : the Art of Scientific Computing* (Cambridge: Cambridge Univ. Press)
 Rebull, L. M., et al. 2008, *ApJ*, 681, 1484
 Schneider, J. 2009, *Interactive Extra-Solar Planet Catalog* (Paris: CNRS-LUTH, Paris Observatory), <http://exoplanet.eu/catalog.php>
 Stapelfeldt, K., Krist, J., Bryden, G., & Chen, C. 2007, In the Spirit of Bernard Lyot: The Direct Detection of Planets and Circumstellar Disks in the 21st Century, ed. P. Kalas (Berkeley, CA: Univ. California, Berkeley), 47
 Stansberry, J. A., et al. 2007, *PASP*, 119, 1038
 Stern, S. A. 1995, *AJ*, 112, 1203
 Su, K. Y. L., et al. 2005, *ApJ*, 628, 487
 Trilling, D. E., et al. 2008, *ApJ*, 674, 1086