

Boston University

OpenBU

<http://open.bu.edu>

BU Publications

Impressions

2013

Impressions, Fall 2013

<https://hdl.handle.net/2144/34824>

Boston University

Boston University Henry M. Goldman
School of Dental Medicine

impressions



Global Health

Advancing health equity near and far

**BOSTON
UNIVERSITY**

CONTENTS

Fall 2013

GLOBAL
HEALTH

30



“Miraculous” partnership begins in Guatemala

Children are accessing dental care for the first time in their lives.

34



Going Global

Oral surgery externship sends students to China.

39



Community Health Programs

Where GSDM offers oral health care and education locally. (Doogie helps too.)

44



Global Days of Service

One University. One month.
Countless acts of kindness.

Quoted

“Global health is inter-professional in nature, relying on collaborations from...innumerable fields.”

—Dean Jeffrey W. Hutter
Dean's Message | page 2



SECTIONS

3

NewsinBrief

International elective externships improving global health • Celiac research funded • Chinta named campaign chair • A momentous commencement Oral surgery suite unveiled



3

22

Spotlight

Schoolwide reorganization • Alumni couple Adam Persky and Silva Battaglin DMD 90



25

47

Alumni

Teeth and heart health: quality counts AADR Boston • Alum wins Frechette Award "Quintessence" • Our 50th Anniversary Class notes • On the Road



54

Fall 2013

IMPRESSIONS

A publication for the alumni and friends of Boston University
Henry M. Goldman School of Dental Medicine

DEAN

Jeffrey W. Hutter

EDITOR

Mary Becotte
Director of Communications & External Relations

MANAGING EDITOR

Jackie Simon
Associate Director of Publications & Media Relations

CONTRIBUTORS

Julia Bookout
Communications Manager

Leslie Caiola
Alumni Coordinator

Kaylee Dombrowski
Alumni Coordinator

Kevin Holland
Assistant Dean for Development & Alumni Relations

Stacey McNamee
Director of Alumni Relations & Alumni Giving

Kimberley Miller
Director of Development

Namita Raina
Associate Director of Marketing & Communications

DESIGN

Jackie Simon

PHOTOGRAPHY

BU Photography, Getty Images, iStockphoto

COVER PHOTO

iStockphoto

Send correspondence and address changes to: Editor, Impressions, Communications Office, Boston University, Henry M. Goldman School of Dental Medicine, 72 E. Concord Street, B-303C, Boston, MA 02118

PHONE 617-638-5147
FAX 617-638-4895
EMAIL becottem@bu.edu

Boston University's policies provide for equal opportunity and affirmative action in employment and admission to all programs of the University.

1013

Please recycle.



DEAR ALUMNI AND FRIENDS,
In 2006, The President's Council on Boston University and the Global Future released a report that states that "Boston University aspires to be among the great international universities of the 21st century.

Greatness and globalism go hand in hand. By harnessing our scholarly, spiritual, and humanistic traditions and the vast resources within our faculty and students, we will enable the University to meet the challenges of the world and contribute to its betterment." Seven short years later, under the leadership of VP and Associate Provost Willis Wang and Provost of the University Jean Morrison, the Office of the Provost now oversees the robust offerings of Global Programs, which advances Boston University's global strategy and serves as a champion for global initiatives at home in Boston and abroad.

Recognizing the important role global health has and will continue to play in our GSDM Mission and Vision to become the premier Center of Excellence in Oral Health Education, Research, and Patient Care, on July 1, 2013, I appointed Dr. Michelle Henshaw to the position of Associate Dean for Global and Population Health at the Boston University Henry M. Goldman School of Dental Medicine (GSDM). At its core, global health is interprofessional in nature, relying on collaborations from all of the health professions and sciences, social work, engineering, and innumerable other fields. Dentistry and dental education have been key players in the increased focus on global health. Boston University is a member of the Consortium of Universities for Global Health (CUGH), which was established in 2009. The Bill and Melinda Gates Foundation provided the leadership and funding to plan this consortium and the

Rockefeller Foundation provided a grant to help develop the organizational structure of CUGH in its first year of existence. I am very proud to say GSDM is a founding member of the Global Oral Health Interest Group of CUGH which had its inaugural meeting during the 2011 CUGH Conference in Montreal.

In this issue you will read about our many efforts and programs to support and promote global health, both in our own community and around the world. You will read about the breadth and depth of the impact that GSDM has in our local community; collaborations within Boston University to promote oral and overall health around the world, many of which include the participation of our alumni; and you'll read about the newest GSDM global externship partnership with China.

As we close a yearlong celebration of our 50th Anniversary, I could not be more proud of the work that our faculty, staff, students, residents, and alumni are doing around the world to promote oral and overall health. Your good work reflects well on your alma mater and as we look to the next 50 years we will continue to rely on you to strengthen the presence and reputation of GSDM as a leader in global health.

Sincerely,

A handwritten signature in black ink that reads "Jeffrey W. Hutter". The signature is written in a cursive, flowing style.

JEFFREY W. HUTTER, Dean



Mission supervisor Frank Schiano with some of the children treated in Teacapan

A VACATION HOME BECOMES A DENTAL SANCTUARY IN TEACAPAN, MEXICO

A group of American and Canadian expatriots once found a beautiful, but poor fishing village in Mexico and chose to live half the year there. They wanted to give back to this community that gave them the chance to live in such beautiful surroundings. So they teamed up with Project Stretch to build and run a dental clinic for the community.

Now, our students and alumni go to Teacapan, Mexico, at least twice a year on international elective externships.

Europa Yang DMD 13 went with President and founding board member of Project Stretch, Dr. John Ficarelli from February 23 to March 2, 2013. Andy Brito, Michael Donovan, Parsia Koleini, and Jenny

Lorenzo volunteered in the same pediatric clinic from March 2 to 10 with supervisors Frank Schiano CAS 01, DMD 06, AEGD 07 and Ismael Montane DMD 10, AEGD 11.

"The group this year was fantastic," says Dr. Schiano. "We all worked almost non-stop throughout the week, treating as many children as we possibly could. I was extremely pleased with the teamwork from our students. Because of their hard work, we were able to provide a record number of treatments to the children. The volunteers in Teacapan are very grateful for our students' efforts."

Yang had attended Project Stretch meetings and helped raise money for the organization a year and a half before she entered dental school. She shadowed Dr. Ficarelli to determine if she wanted to pursue dentistry. (She did, of course!) While at GSDM, she completed her APEX rotation in Dr. Ficarelli's Brookline practice.

"MANY OF THESE CHILDREN HAVE FOUR OR FIVE YEARS OF RECORDS AT THIS CLINIC. THE VOLUNTEERS ARE SEEING IMPROVEMENTS AND LESS NEED FOR EXTRACTIONS. WE WOULD SEE A RESTORATION FROM YEARS AGO THAT IS STILL ARRESTING CARIES."

—Europa Yang DMD 13

Yang, Ficarelli, and the rest of the volunteers saw 500 children in one week. Yang was thrilled to gain experience working with children. She will begin a residency in pediatric dentistry at Lutheran LMC in Holyoke, Massachusetts, this year.

Koleini says that during their week, his team members did very few extractions

By the Numbers

WE'RE RAISING THE BAR

24 PERCENT INCREASE IN ANNUAL FUND

TOTAL FY13 GIFTS ARE UP **34** %

49 % ALUMNI GIFTS HAVE INCREASED

700 PERCENT ALUMNI CAMPAIGN PLEDGES ARE UP

WE'RE IN GOOD COMPETITION

GSDM PLACED IN THE TOP THREE FOR THE "BATTLE FOR BU" ALUMNI PARTICIPATION CHALLENGE



WE'RE AT THE TOP



1 of 16

OUR CLASS GIFT PROGRAM WAS #1 AMONG THE 16 SCHOOLS AT THE UNIVERSITY

because the advanced dental equipment at the clinic allowed them to focus on restorations. Project Stretch recently received a donation of a Panoramic X-ray machine that the organization is now working on getting to Mexico.

Yang says that the children's teeth are improving due to Project Stretch's ongoing effort in the area. "Many of these children have four or five years of records at this clinic," she says. "The volunteers are seeing improvements and less need for extractions. We would see a restoration from years ago that is still arresting caries."

Oral health education helps, too. Upon arrival at the clinic, students take a class on proper tooth brushing. Preceptors Schiano and Montane also go to the local school one day during the trip to give a presentation on oral health. The town recently prohibited candy sellers from selling within schools, where many shop owners made their livings.

That said, volunteers were still motivated to work hard and fast. Koleini says, "If you don't finish the work, the child may not see another dentist for 365 days, so that added a lot of pressure."

Children exploded in cheers when volunteers gave out what Koleini estimates to be 600 toys they brought with them to Mexico. Volunteers also brought hundreds of toothbrushes and toothpaste, for which the children clamored as volunteers drove into town. They brought peanut butter to make nutritious sandwiches for the children, who sometimes have little to eat.

Lorenzo says, "I'm from the Dominican Republic and I've seen poverty there, but I've never been able to help. Now that I have this talent, that's what made this trip so much better. I'm so happy and appreciative that I can help."

Schiano adds, "I would like to thank Dr. Montane for his annual commitment to this mission, and certainly the GSDM Alumni Association for its continued support of these international elective externship experiences for our students." ■



Dentists for a Day

Matt Mara DMD 16 helped student Latrell Mumford with a brushing experiment when children from the Edward W. Brooke Charter School visited GSDM in June.

FINISH THE RACE HONORS VICTIMS OF MARATHON BOMBING

On Thursday, May 2, 2013, the Boston University School of Public Health sponsored a "Finish the Race" walk. "Finish the Race" was developed as a tribute to the affected runners and spectators, and an expression of solidarity with everyone in Boston and neighboring communities who are working to move forward, past the horrific events during and after the Boston Marathon.

The event was a one-mile walk that began on the Talbot Green on the Medical Campus. The first 300 participants received a "Finish the Race" t-shirt, which were worn as a sign of solidarity. At the finish line, participants had the opportunity to sign a greeting card for BMC patients still recovering from injuries suffered at the marathon.

"It was very gratifying to see many of our Boston University Henry M. Goldman School of Dental Medicine (GSDM) faculty, staff, and students participating in this important event," said Dean Jeffrey W. Hutter. He continued, "As an active member of our community, GSDM stands ready to help our neighbors in any way we can as our city continues to cope with the impact of these tragic events." ■



GSDM staff members with Dean Hutter. Patty Delorey, Dean Jeffrey W. Hutter, Mary Ellen Sholes, Barbara McKenna, Marta Diaz, and Edlira Kerthi

GSDM HELPS SOMERVILLE CHILDREN "COUNTDOWN TO KINDERGARTEN"

On Friday, June 14, 2013, Oral Health Promotion Director Kathy Lituri and 13 students participated in Countdown to Kindergarten, Somerville at Boston Children's Museum. Countdown to Kindergarten is a non-profit collaborative that engages families, educators, and community members in a city-wide effort to celebrate and support the transition of children into kindergarten.

The participating students were: John Costello DMD 16; Erika Dean DMD 14; Joseph Deschene DMD 16; Swapnil Gupta AS 14; Erum Hussain AS 14; Ramandeep

Jhandi AS 14; Sukhjinder Kaur AS 14; Champaka Nagaraju AS 14; Amrita Patel DMD 15; Sonam Singh, pre-dental student; Raj Kamal Sohi AS 14; Vanessa Thai DMD 16; and Swathi Uppu AS 14.

They offered dental screenings, oral health information, and interactive activities to hundreds of children about to enter kindergarten in Somerville Public Schools.

"GSDM is always thrilled to participate in Countdown to Kindergarten events," said Kathy Lituri. "It's a great opportunity to promote oral health to young children and their families. The student volunteers learned a lot about interacting with pre-school children as well." ■

In Memoriam: Dr. Oresti Zanni



On Monday, July 15, 2013, Clinical Associate Professor and Clinic Director in the Department of Periodontology at Boston University Henry M. Goldman School of Dental Medicine (GSDM), Dr. Oreste Zanni, 66, suffered a heart attack in the Patient Treatment Center and passed away at Boston Medical Center.

Dr. Zanni was a well-respected and award winning faculty member who died doing what he loved most, teaching students and caring for patients. Dr. Zanni also had a private practice in Methuen specializing in periodontics.

Dr. Zanni was born and raised in Lawrence, Massachusetts. He graduated from Lawrence High School, Case Western Reserve School of Dentistry, and what was then known as the Boston University Graduate School of Dentistry.

Dr. Zanni received numerous education awards throughout his career, including the Educators Award from Boston University (2008, 2009, and 2013), the Faculty Teaching Award from GSDM, and the Excellence in Teaching award from his PERIO 09 graduate students.

Dr. Zanni, husband of the late Paula (Licciardi) Zanni, is survived by his brother in law, Michael Licciardi and his wife Linda of Londonderry, NH; two cousins, Ann Loiacono of Lawrence and Mayor Stephen Zanni of Methuen; and several nieces and nephews. ■

Nothing Personal Wins 2013 Spring Dodgeball Intramural Championships



Dodgeball champs Nothing Personal

Nothing Personal, the men's and co-rec intramural dodgeball teams from the Boston University Henry M. Goldman School of Dental Medicine, both claimed victory at the 2013 Boston University Spring Intramural Championships on Sunday, April 14, 2013.

Nothing Personal's men's team members are: Joe Bousaba DMD 13, Christopher Connell DMD 15 (co-captain), David Garazi DMD 15 (co-captain), Ibrahim Lakkis DMD 15, Aaron Mertz DMD 16, and Ramandeep Samra DMD 15.

Nothing Personal's co-rec team members are DMD 15 students: Christopher Connell (co-captain), David Garazi (co-captain), Tina Giannacopoulos, Ibrahim Lakkis, Keely Matheson, Jessica Metcalfe, and Ramandeep Samra.

The championship series games featured a round-robin portion in which teams played each other in three games to determine seeding in the playoffs. After the round-robin, there was a playoff in which teams played best two out of three games, with the championship game being the best of five. Nothing Personal's teams won every round they played.

"Everyone contributed to each win," said Christopher Connell, Co-Captain of both Nothing Personal teams. "This was definitely a team effort." ■

EDUCATION LEADS TO IMPROVING HEALTH IN SAN MARCOS, HONDURAS



Schoolchildren received free toothbrushes from volunteers

"Cepillo! Cepillo!" Spanish for "Toothbrush!" those were the calls from school children in San Marcos, Honduras, when Sahar Abtahi AEGD 13 and Lindy Su DMD 13 visited with Cape Cares from March 1 to 8, 2013. Cape Cares is a Cape Cod-based organization that brings health and support professionals to Central America—with a focus on Honduras—to provide free health care.

The group's website states: "Historically, most of the dental care provided was surgical—extracting badly decayed teeth. As the years have progressed, we have emphasized education and prevention and now we are able to provide fillings, dental cleanings, and fluoride treatments."

"We went to a local elementary school to do dental public health one day and you could see the effects of the ongoing education," Abtahi says. "They're becoming more aware, even though there is really no access to health care."

Education is helping the population make great strides, but the need is still huge.

Director, Global Initiatives Kathleen Held adds perspective to Abtahi's statement: "In the US we say there is a disparity of care, or no dental care, but that's because people can't afford dental care. In Honduras, they are physically unable to access a dentist."

"I didn't expect the need for healthcare," says Su. "I didn't expect people to walk hours at the crack of dawn just to see us. At the end of the trip we felt bad letting people go not having been seen because we didn't have the time."

Abtahi paints a vivid picture of their surroundings.

"It's not exactly easy living," she says. "We had no electricity. We were set up outside, so we'd see gauze blowing off in the wind. Chickens would walk in front of us during extractions."

Still, the two enjoyed both the dental experience and the natural simplicity of life there.

One of Abtahi's favorite moments was when a 19-year-old woman came in not because she was in pain, but because she had seen a cavity on a back tooth and wanted a filling. "I was so excited that she wanted to save her back teeth that I did a posterior composite even though we were only doing anterior teeth," Abtahi said. "We could tell our presence there was making a difference."

Abtahi was unable to go on an international elective externship as a fourth-year dental student at GSDM, but she kept trying. She was overjoyed to find a spot this year, using her vacation time and marking the first time GSDM has placed a resident on an international elective externship.

"You're hesitant to do this on your own so I wanted my first trip to be with the School," she says. "I wanted to feel supported by the School so that I could use this as a steppingstone toward participating in missions in the future." ■

→ 2013 ADEA ANNUAL SESSION & EXHIBITION

STRONG GSDM PRESENCE AT ANNUAL SESSION

Several members of the Boston University Henry M. Goldman School of Dental Medicine's (GSDM) community attended the 2013 American Dental Education Association (ADEA) Annual Session & Exhibition, March 16-19 in Seattle, Washington. The theme of this year's Annual Session, "Landscape of Learning," encompassed key issues and future-oriented concepts in dental education. Educational sessions focused on: curricular change with a focus on interprofessional education, various pedagogical approaches especially related to learning how to teach to inspire and motivate students as learners and future professionals, and methods of effective reflection and positive self-assessment.

Associate Professor in the Department of General Dentistry Paul Farsai and Catherine Sarkis, Assistant Professor in the Department of Health Policy & Health Services Research and Assistant Dean for Admissions, lead the session, "Background Checks and Screenings in Dental Education: Establishing Professional Standards." The presentation included a continuum of information about ethical behavior and conduct of undergraduate pre-dental students, to dental school applicants, to matriculating and continuing dental students, to licensed professionals. A rubric was presented as a tool to make determinations regarding professional standards. Ms. Sarkis also received the ADEA Council of Sections Award.

"I was grateful to ADEA for the Council of Sections award and to the distinguished panel of speakers for their participation and for the important information they provided," said Catherine Sarkis. "Arguably the reputation and future of the profession depends not only on the knowledge and skills of its members, but also on the values and conduct of its members."

Director, Global Initiatives Kathleen Held and Director, Community-Based Education Ana Zea presented a lecture, "GLOBAL:

What's in it for your school, students and communities?" The presentation identified benefits and challenges in the creation of a global health program, discussed important considerations for the planning and implementation of global missions, and reviewed evaluation strategies for key stakeholders.

"It was our goal when presenting at the ADEA conference to highlight GSDM's programs aimed at addressing global oral health disparities," said Kathleen Held. "By taking the lead we hoped to provide tools to other dental academic institutions also committed to fostering an understanding and helping disadvantaged populations both domestically and abroad. We look forward to working with the

other dental schools who participated in the session and supporting their global initiatives in the future."

All four GSDM representatives for the ADEA Council of Students, Residents and Fellows (CoSRF), Arsalan Elahi DMD 14, Kelsey Hill DMD 14, Emma Lattouf DMD 15, and Andrew Soule-Hines DMD 15 attended education sessions with other dental school CoSRF representatives. Lattouf and Soule-Hines are new CoSRF representatives and this was their first ADEA Annual Session.

"I had a great time. I learned about the structure of ADEA, had a chance to try some of the newest preclinical teaching systems, and perhaps most importantly, spoke with other students about their experiences in dental school," said Andrew Soule-Hines. "It can be difficult to gain perspective on what other dental schools are like, but the annual session allowed us to do just that."

Emma Lattouf added, "I'm looking forward to sharing this new knowledge with our classmates and hope to work more closely with the faculty to better our school and dental education."

A fifth student, Marc Horton DMD 14, attended the Annual Session as a participant in the 2013 ADEAGies/AADR Academic Dental Careers Fellowship Program (ADCFFP).

"BY TAKING THE LEAD WE HOPED TO PROVIDE TOOLS TO OTHER DENTAL ACADEMIC INSTITUTIONS ALSO COMMITTED TO FOSTERING AN UNDERSTANDING AND HELPING DISADVANTAGED POPULATIONS BOTH DOMESTICALLY AND ABROAD."

—KATHLEEN HELD, DIRECTOR,
GLOBAL INITIATIVES



Dr. Joseph Calabrese, Dr. Ana Zea, and Kathleen Held

"I am so proud of the faculty, staff, and students from the Boston University Henry M. Goldman School of Dental Medicine who attended and participated in the ADEA Annual Session," said Dean Jeffrey W. Hutter. "You are exemplary representatives of our School."

Alum Bobby Virk ORTHO 06 hosted an alumni reception at a private club at the Columbia Tower. Dean Jeffrey W. Hutter, Kevin Holland, Stacey McNamee, and GSDM Annual Session attendees greeted and mingled with local alumni.

"It was a wonderful evening," said Dean Jeffrey W. Hutter. "The faculty, staff, and students from the Boston University Henry M. Goldman School of Dental Medicine enjoyed having an opportunity to meet with our distinguished alumni from the Seattle area." ■

DR. EVA HELMERHORST AWARDED FUNDING TO SEEK CELIAC DISEASE TREATMENT

Associate Professor of Molecular & Cell Biology Dr. Eva Helmerhorst has received an NIH Independent Scientist Award (KO2) in the form of a five-year salary award of \$75,000. The funding comes from the National Institute of Allergy and Infectious Diseases (NIAID) and began June 15, 2013.

According to the NIAID website, "The KO2 is intended to foster the development of outstanding scientists and enable them to expand their potential to make significant contributions to their field of research."

Dr. Helmerhorst said, regarding the award:

While this is a salary award to me, the project involves some very distinguished physicians and investigators, and it is really the team that



makes this project successful. I would like to recognize Drs. Detlef Schuppan, Ciaran Kelly, and Dan Leffler at the Beth Israel Deaconess Medical Center, Dr. Floyd Dewhirst at the Forsyth Institute, and Dr. Frank Oppenheim at GSDM.

Dr. Helmerhorst's research centers on the role of saliva in gastrointestinal health and disease. Her team found that saliva contains enzymes that can cleave gluten. Gluten is not tolerated by people who suffer from celiac disease. Because there is no true therapy for celiac disease at this time, people with the disease must eliminate gluten from their diet. Research from

Dr. Helmerhorst's lab has shown that the gluten-degrading enzyme activities in saliva are derived from bacteria that degrade gluten into smaller fragments. Thus, her research team is working to see if there is a potential therapeutic application for these newly discovered bacteria and their enzymes in the treatment of celiac disease.

In April 2013, Dr. Helmerhorst published on the findings in the publication *Clinical Microbiology and Infectious Diseases* in an article titled "The cultivable human oral gluten-degrading microbiome and its potential implications in celiac disease and gluten sensitivity."

Dr. Helmerhorst gave a lecture on the same topic on June 10, 2013, as an invited speaker at the Gordon Conference in Mucosal Health and Disease. The title of the lecture was "Oral microbial enzymes and their potential application in celiac disease."

Said Dean Jeffrey W. Hutter, "Congratulations to Dr. Helmerhorst on her funding award. As an outstanding researcher, Dr. Helmerhorst advances the mission of the Boston University Henry M. Goldman School of Dental Medicine to promote excellence in research to improve the overall health of the global population." ■

Jamaica Externship Cultivates Future Leaders

Bobby Lynn and Paul Nardi, both DMD 13, travelled to St. Mary, a small parish in northeast Jamaica, on an educational and dental mission with the Jamaica Awareness Association of California (JAAC) June 2-7, 2013. Their preceptor was former GSDM faculty member and longtime JAAC volunteer Dr. Gregory Stoute.

Dr. Stoute, who is now executive vice dean at Meharry Medical College School of Dentistry in Nashville, offered the volunteer opportunity to several third-year pre-doctoral students at Meharry, who also attended. GSDM and Meharry students enjoyed the chance to work together and Dr. Stoute noted that GSDM students were well prepared and equipped to advise the younger Meharry students as needed.

The dental group saw patients ranging from infants to elders. Entire families waited in line all day to see the dentists. The team worked with basic instruments and supplies, sometimes doing extractions in beach chairs. They became local celebrities during their time there, being interviewed on a local radio station and receiving fanfare from locals.

"The trip was rewarding and enlightening," said Nardi. "If you can handle working with limited resources you will learn a lot and become a better dentist." He added, "Dr. Stoute was a wealth of knowledge and it made for great fun and learning."

Both Lynn and Nardi hope to return to Jamaica and visit new sites now that they are doctors. They also hope to take on leadership roles on future missions.

JAAC was founded in Los Angeles in 1987 with the goals of increasing educational opportunities for talented, economically at risk young people who might not otherwise continue their education; developing effective healthcare delivery in Jamaica; and assisting the needy in the local community to experience a better quality of life. ■

→ THE CAMPAIGN FOR BOSTON UNIVERSITY



Sudha Chinta
ENDO 09 to
serve as GSDM
Campaign Chair for
The Campaign for
Boston University:
Choose to be Great

Dr. Chinta received her BDS in 1992 from the University of Bangalore, Bangalore, India, her DDS from the University of the Pacific Arthur Dugoni School of Dentistry in 1996, and her Certificate of Advanced Graduate Study in Endodontics from GSDM in 2009.

Assistant Dean for Development & Alumni Relations Kevin Holland announced in May that Dean's Advisory Board member Dr. Sudha Chinta has agreed to serve in the highly visible role of campaign chair for GSDM. She joins the leadership of the University's first-ever comprehensive fundraising campaign, launched in September 2012.

In this capacity, Dr. Chinta becomes GSDM's representative on the University Campaign Steering Committee, along with continuing to serve on the GSDM Dean's Advisory Board and the School's 50th Anniversary Committee. She will represent the University and School at important BU functions and events and will work to increase the involvement of GSDM alumni, particularly those on the West Coast where she is based. Dr. Chinta will also work to connect GSDM's international alumni more closely to the Campaign.

Dr. Chinta has been a generous supporter to GSDM since her graduation. She and her family have recently committed to supporting the campaign with a remarkable leadership gift. "I am so thrilled that Sudha will play such a significant role in the campaign. She is a terrific individual, and her family's deep philanthropic commitment to our efforts will hopefully serve as an inspiration to even our youngest classes. This is a time for everyone from GSDM to dream big!" noted Dean Jeffrey W. Hutter.

Dr. Chinta and her husband are the parents of a daughter and a son. Their daughter is enrolled in the seven-year MED program at BU, and their son is a future BU Terrier (Class of 2020). "This is a remarkable moment in the history of the Henry M. Goldman School of Dental Medicine," Dr. Chinta said. "As a Dean's Advisory Board member, I was excited to be part of the applied strategic planning process for the GSDM. That yearlong process led to 10 goals, including facility space plans for future growth and profound curriculum changes, which the School's campaign will support. I know that my fellow alumni will be active partners with Dean Hutter and the entire School as we position GSDM for the next 50 years."

She maintains a private practice at Danville Endodontics in Danville, CA and teaches part-time in the Division of Endodontics, University of the Pacific Arthur A. Dugoni School of Dentistry. She previously maintained a private practice performing all aspects of dentistry. She is a member of the American Association of Endodontists, the American Dental Association, and the California Dental Association. ■

→ WHITE COAT CEREMONY & FAMILY WEEKEND: A growing right of passage

The Boston University Henry M. Goldman School of Dental Medicine's (GSDM) third annual White Coat Ceremony & Family Weekend was bigger than ever this year. A record 775 guests (compared to last year's nearly 700) filled Metcalf Hall on the Charles River Campus on Saturday, July 6, 2013 to celebrate 187 students in the DMD 15 and AS 14 Classes.

The White Coat Ceremony marks the midway point of the students' education and celebrates their transition from the classroom to the patient treatment center. Students will now begin managing the comprehensive oral health care of their assigned patients and providing them with needed treatment in the fifth and sixth floor Patient Treatment Centers of the School of Dental Medicine.

But before students donned their coats, the day began with school tours at GSDM. Dean Jeffrey W. Hutter and Assistant Dean of Students Joseph Calabrese waited on the steps of the School to greet and take photos with students and their guests. The 30–40 minute tours ran four times an hour and lasted into the afternoon.

Later that day, in Metcalf Hall at the George Sherman Union, marshalls Mitch Sabbagh DMD 87 and Ronni Schnell DMD 81 led students in the processional.

Dr. Calabrese welcomed guests. "We appreciate you taking the time to fit us into your busy schedule and recognize the dedication and hard work that our students have made to reach this special moment, a moment frequently referred to as halfway to DMD," he said.

Dr. Calabrese introduced Dean Jeffrey W. Hutter, who gave opening remarks. "Family truly is the most important part of our lives and that your child wanted you here today for this ceremony speaks volumes to me about our students and the values that you as parents, siblings, relatives, and friends have instilled in them," Dean Hutter said. "That they have elected to mark this transition in such a formal and solemn manner in front of their families tells me and my faculty and staff that they are indeed ready for the new challenges ahead."

Students were honored with a keynote address from American Dental Association President Dr. Robert Faiella. Dr. Faiella emphasized the importance of finding balance in one's personal and professional life. He said that, while students should strive for success in their future careers as dentists, they must also make time for family and friends.



Students pose with Dr. Faiella and Dean Hutter

Assistant Dean for Academic Affairs Cataldo Leone then presented the students to Dean Hutter, saying, "It was not so long ago that these classes joined our community. And yet, they have already enriched us by their presence. These classes consist of highly intelligent, dedicated men and women who have worked hard in school. We are proud of all their accomplishments thus far, both professional and personal."

Students were called up to the stage three-at-a-time to officially put on their white coats for the first time. Dr. Stephen DuLong read the names as Drs. Calabrese, John Guarente (Associate Dean for Clinical Affairs), Leone and Janet Peters (Faculty Liaison to the Advanced Standing Program) helped students with their coats. Dean Hutter and Dr. Faiella then congratulated each of the students before they left the stage.

Members of the class who received the Spencer N. Frankl Scholarship were recognized: Antonio Maceda-Johnson, Keely Matheson, Andrew Pham, and Lyle Smith. Cara Seidel was acknowledged for winning the Omicron Kappa Upsilon William S. Kramer Award of Excellence.

Dean Hutter ended the ceremony by leading the students in the recitation of the Professional Oath, the same oath they took at the Professional Ceremony during their orientation.

Following the ceremony, students proceeded to the small ballroom for their respective class photos with Dean Hutter, along with photos with Dr. Faiella and Dr. Peters. Afterward, they met their friends and family in the Ziskind Lounge next door for a reception.

The ceremony was sponsored in part by the Massachusetts Dental Society, while the reception was sponsored in part by Crest/Oral-B/Proctor and Gamble. ■

"N-GLYCOSYLATION INDUCES COLLAGEN TRIPLE HELIX REPEAT CONTAINING 1 AND DRIVES ORAL CANCER CELL MIGRATION" PUBLISHED IN THE MAY ISSUE OF THE JOURNAL OF BIOLOGICAL CHEMISTRY



Studies from Dr. Maria Kukuruzinska's laboratory have identified a novel role for protein N-glycosylation in driving oral cancer cell migration, likely to be involved in oral cancer progression and metastasis. Dean Jeffrey W. Hutter praised the efforts and discovery, "This work supports GSDM's effort to promote research in oral cancer and to increase its scholarly visibility through publications in high impact journals."

Recent studies from this group have demonstrated that protein N-glycosylation was coordinately regulated with canonical Wnt signaling and E-cadherin adhesion via positive and negative feedback mechanisms. Moreover, these interactions were dysregulated in oral cancer due to aberrant and unchecked activation of the N-glycosylation/canonical Wnt signaling feedback loop and diminished E-cadherin adhesion. They now show that in oral cancer, inappropriately activated N-glycosylation and canonical Wnt signaling converge to upregulate collagen triple helix repeat containing 1 (CTHRC1), an N-glycoprotein implicated in tumor invasion and metastasis. The authors propose that targeting N-glycosylation/canonical Wnt/E-cadherin network may represent an effective strategy for therapeutic intervention for oral cancer. Moreover, since CTHRC1 influences tumor invasion and metastasis of many aggressive neoplasms, these findings may reveal relevant mechanisms for the pathogenesis of other cancers.

This work, by Gangli Liu, Pritam K. Sengupta, Basem Jamal, Hsiao-Ying Yang, Meghan P. Bouchie, Volkhard Lindner, Xaralabos Varelas, and Maria A. Kukuruzinska, "N-glycosylation induces collagen triple helix repeat containing 1 and drives oral cancer cell migration," is described in the *Journal of Biological Chemistry*, published online May 2013. ■

GSDM HELPS "SPREAD THE HEALTH" AT WELLNESS FAIR

On Wednesday, March 27, 2013, BU held its "Spread the Health" Wellness Fair in the George Sherman Union on the Charles River Campus. The Fair is held annually for BU undergraduates and addresses a variety of relevant issues, including oral health.

GSDM Oral Health Promotion Director Kathy Lituri and four student volunteers—David Cheng DMD 16; John Costello DMD 16; Grace Hannawi SAR 13, DMD 17; and Minh-Phuong (Lana) Le DMD 16—participated in the Fair.

GSDM offered oral health promotion, education, age appropriate activities, screenings, and referrals. Their information included details about: third molars, oral piercing, the oral health consequences of alcohol, tobacco and sugar, and dental careers. Many of the undergraduates who visited the GSDM table were interested in careers in dentistry and are currently on the pre-dental track.

"The Fair is well-organized, inclusive and offers information on all kinds of topics relevant to this age group," said Kathy Lituri. "It's a great venue for GSDM to educate college students about the importance of dental and oral health. ■

GSDM Rocks First Ever Battle of the Bands

On Saturday, April 20, 2013, Boston University Henry M. Goldman School of Dental Medicine's (GSDM) American Student Dental Association (ASDA) chapter hosted the first ever Battle of the Bands at the All Asia Bar in Cambridge. The two "battling" bands were GSDM's Mental Blocks and The Most Incredible from the Boston University School of Medicine (BUSM).

The Mental Blocks band members are: Dr. Fred Harrington, Chris Bickford DMD 13, Michael Maya DMD 13, Shervin Tabeshfar PROS 13, and Habib Tarzi DMD 13.

The Most Incredible band members are: Mauro Caffarelli MED 15, Matt Kaufmann MED 16, Jason Kung MED 16, and James Reilly Jr. MED 14.

Antonio Maceda-Johnson DMD 15 organized the event, with assistance from Ingy Alhelawe DMD 14 and Keely Matheson DMD 15.

While both bands thrilled the crowd with their musical prowess, it was decided to forgo the competitive aspect of the evening and just let everyone enjoy the entertainment.

"Given that the Boston Marathon bombings and subsequent manhunt were so recent, we wanted to keep it friendly and just focus on spending time with our fellow students," said Antonio Maceda-Johnson. "Everyone had a great time." ■

(below) The Mental Blocks: Drs. Chris Bickford, Fred Harrington, Michael Maya, Shervin Tabeshfar, and Habib Tarzi





(right) Matt Steuer OMFS 13 and his wife (bottom, from left) Dean Jeffrey W. Hutter, Layeeq Ahmed AS 13, brother Dr. Shafeeq Ahmed, niece Zaara, and nephew Kaashif

A Momentous Commencement

IN OUR 50TH YEAR



On Friday, May 17, 2013, Boston University Henry M. Goldman School of Dental Medicine (GSDM) held the School's 49th annual Convocation at the Walter Brown Arena. Approximately 190 DMD and 80 post-doctoral students were honored and awarded degrees.

Before beginning the commencement program, Dean Jeffrey W. Hutter took a moment to reflect on the April 15, 2013, Boston Marathon bombings. He expressed pride in the GSDM community for joining fellow Bostonians in prayer for victims and families and for standing ready to help their neighbors in

(clockwise, from top left)
Commencement Speaker Dr. Jeanne
Craig Sinkford, Valedictorian Hilary
Linton, the GSDM ceremony

I TRULY FEEL LIKE I AM PART OF A DYNAMIC FAMILY MADE UP OF INDIVIDUALS WHO WILL BE THERE FOR ME AND SUPPORT ME THROUGHOUT MY CAREER—A CAREER THAT CAN TAKE SO MANY POSSIBLE DIRECTIONS AND ONE I AM TRULY THRILLED TO BE STARTING.

—**Hilary Linton**
DMD 2013,
Valedictorian



any way they could. He expressed special gratitude to the Oral & Maxillofacial Surgery Faculty, staff, and residents who provided triage and care to the wounded that were brought to Boston Medical Center.

Said Dean Hutter: "We as a University and a School of Dental Medicine are Boston Strong, and Kathy and I could not be more proud of how you and your colleagues who may not be here with us this afternoon reacted and coped with this horrific event and its aftermath."

Dean of Marsh Chapel Reverend Dr. Robert Allan Hill began the ceremony with an invocation.

Following the invocation, Dean Hutter addressed the

Class of 2013, noting that this year's Commencement holds special meaning, occurring during the 50th Anniversary of the founding of the School: "I have watched you and your classmates grow into confident, competent dental and oral health care professionals and I am delighted to share this special occasion with you. You should feel very proud to be a member of such a prestigious graduating class." Dean Hutter continued:

Shortly, when you walk across this stage and receive your Boston University Henry M. Goldman School of Dental Medicine Diplomas and Certificates, know that they are symbols of both your dedication over the course



of your academic careers and your commitment to the future of our dental profession.

Valedictorian of the DMD 2013 Class Hilary Linton addressed the audience of approximately 2,000. Linton said that, having interacted with most of the GSDM community gathered at Commencement, “I truly feel like I am part of a dynamic family made up of individuals who will be there for me and support me throughout my career—a career that can take so many possible directions and one I am truly thrilled to be starting.”

To her class, Linton said:

Let me be the first person to congratulate you today. I feel incredibly honored to be a part of the graduating class of 2013. GSDM was the first school in the country devoted solely to specialty education in dentistry. It has a rich and impressive history and we will strive to continue that legacy.

Linton also took time to thank the faculty, patients, family, and friends.

The Spencer N. Frankl Award for Excellence in Teaching was presented during the ceremony to outstanding faculty member Dr. Richard D’Innocenzo, who is clinical associate professor and director of pre-doctoral education for the Department of Oral & Maxillofacial Surgery as well as vice chairman of Dentistry and Oral & Maxillofacial Surgery for Boston Medical Center.

Dr. Jeanne Craig Sinkford delivered the Commencement address. Dr. Sinkford is senior scholar-in-residence in the Office of the President and CEO of the American Dental Education Association (ADEA) as well as professor and dean emeritus of Howard University College of Dentistry. In 1975, Dr. Sinkford became the first female dean of a dental school when she was appointed dean of Howard University College of Dentistry. She works with the ADEA to develop and implement policy in dentistry involving gender and minorities. Dr. Sinkford has been on the GSDM Dean’s Advisory Board since 1981.

Sinkford first extended her congratulations to the Class of 2013. She expressed her feeling of kinship with GSDM and respect for the qualities that mark GSDM as unique among dental schools; in its commitment to research, expansion of community service, and educational transformation.

In her speech Sinkford also discussed both the current state of dentistry and the future of the profession. She talked about the continuing need for better oral health care for Americans and how the coming advances in scientific research and discovery, such as genomics and stem cell research, will transform the way they practice.

Sinkford offered this advice:



In your personal lives your patients will now call you “doctor” and doctor means “healer.” It also means “teacher.” You will find in your practice that “wellness” is a partnership between doctor and patient and that each has a role in lifelong health and wellness.

Sinkford closed by saying: “Believe me—There are no shortcuts to anyplace worth going and to those whom much is given, much is required.”

Following Dr. Sinkford’s Commencement address, DMD Class President Joshua T. Quinby and AS Class President Manu Sharma presented the 2013 Class Gift on behalf of their classes.

The post-doctoral and pre-doctoral graduates of 2013 then each made the significant trip to the stage to receive their diplomas and Certificates of Advanced Graduate Study.

Once the students had received their diplomas, Dean Hutter led the graduates in reading the Professional Oath of the Classes.

Symbolic of the graduates’ new status as alumni within the GSDM family, Dean Hutter invited GSDM Alumni Association President Dr. Mitchell V. Sabbagh DMD 87 to the stage to welcome the graduates to the Alumni Association. Sabbagh first acknowledged Dean Hutter for his support of the Alumni Association and for his leadership. Sabbagh continued: “This special day of celebration during the 50th Anniversary of our School marks the

(clockwise from bottom left) 1. Manu Sharma DMD 13 and husband Jay Sharma 2. Darshit Shah DMD 13, ORTHO 15 and Assistant Dean of Students Joseph Calabrese 3. ChiungYun Chang PERIO 13 with her cousin, friend Joyce, and mother 4. Mona Alsulaiman DScD 13 and her family 5. Michael Donovan DMD 13 and his nephew 6. Farnaz Adibi DMD 13, PEDO 15 and her boyfriend 7. Danielle Fernandez DMD 14 and Danielle Berkowitz DMD 13 8. Jenny Lorenzo DMD 13

completion of your studies here, but more importantly, it cements our relationship as we officially welcome you as our Alumni. Our alumni association, like your family, is here to help you embark on an exciting future that, on the one hand you're ready for, but also from which you don't fully know what to expect."

Sabbagh concluded: "Though you will be leaving our hallowed halls and though it may be bittersweet, please know that the family that is your Alumni Association now welcomes you with open arms and an open heart. Welcome, new alumni!"

Dean Hutter then made his final remarks. He took a moment to thank the faculty and staff of GSDM along with the families and friends for their support of the graduates.

He gave the following advice to the graduates: "Cherish your education and your profession and measure success not by the amount of money you earn, but rather by the contribution you make to your family, your profession, your patients and your community."

Dean Hutter then thanked Reverend Hill for his leadership and support through the recent trying and troubling times for Boston University. Reverend Hill then delivered the benediction.

Graduates, guests, and members of the GSDM community proceeded to a reception, where they celebrated their achievements over refreshments and appetizers.

And with that welcome, the graduates commenced—first to continued celebrations of their achievement and then on to their continuing education and dental health careers. ■

CLASS GIFT



DMD & AS 2013 Class Gift Wins University-wide Contest

CONTINUED ►



The Class Gift Campaign is an annual, student-driven tradition at Boston University. While students could give in any amount, the suggested donation was the symbolic amount \$20.13.

The GSDM 2013 Class Gift was presented with special pride and enthusiasm: The DMD and AS classes won the University-wide Class Gift Competition, ultimately reaching 100% participation.

The total amount donated by the Class of 2013 was \$3,743.92, which will go to GSDM community outreach, elective externships, and student scholarships. Alumni Board President Dr. Mitch Sabbagh DMD 87 generously matched the donation. In addition, on the night of the Goldman Gala on May 3, Dr. David Lustbader DMD 75, Chair of the Dean's Advisory Board and Dr. Ronald Weissman PROS 77, CEO and Founder of Gentle Dental Associates and a valued member of the Dean's Advisory Board, also matched the Class of 2013 gift. The total gift was an impressive \$14,975.68. ■



AS Class President Manu Sharma (top) and DMD Class President Joshua T. Quinby (bottom) presented the 2013 Class Gift



(top) Participants at the ASDA Golf Tournament
(center) Nazia Malik and Anna Azar, both DMD 13, at the Senior BBQ

SENIOR WEEKEND

Senior Weekend kicked off Friday, May 10, 2013, with ASDA Hour at South End tapas restaurant Estragon for the DMD Class of 2013. Later that evening, the Advanced Standing Farewell Party took place at the Living Room in Boston. Alumni, faculty, staff, friends, and pre-docs then met at Norwood Country Club on Saturday for the fourth annual ASDA Golf Tournament. On Sunday, Student Affairs, Development & Alumni Relations, and the University Development Office hosted the Senior BBQ at the BU Pub. Continuing the festivities into the following week, Associate Dean for Clinical Education Dr. John Guarente hosted a Cake Party for seniors on Thursday, May 16, 2013, on the School's sixth floor Patient Treatment Center. ■

BELIEVE ME—THERE ARE NO SHORTCUTS TO ANY-PLACE WORTH GOING AND TO THOSE WHOM MUCH IS GIVEN, MUCH IS REQUIRED.

— Commencement speaker Dr. Jeanne Craig Sinkford



ADVANCED SPECIALTY EDUCATION PROGRAM IN ENDODONTICS CLASS OF 2013 RECEPTION

(left) Eda Kerthi, Barbara McKenna, and Heba Al-Qatami with her son Faisal. Al-Qatami received a DScD and CAGS

On May 16, 2013, residents of the Advanced Specialty Education Program in Endodontics Class of 2013 celebrated their graduation at the Prudential Tower Skywalk. Director of the Advanced Specialty Education Program in Endodontics Dr. Sami Chogle hosted the event with the support of the Henry M. Goldman School of Dental Medicine Endodontic Alumni Association. Dean and Mrs. Jeffrey W. Hutter also attended. ■



(right) Students enjoying a first look at their yearbook

ANNUAL SENIOR AWARDS BRUNCH

A celebratory crowd of 500 GSDM graduates, family, faculty, staff, and friends gathered on Saturday, May 18, 2013, for the Class of 2013 Senior Awards Brunch at the Fuller Building. The annual event, hosted by Dean and Mrs. Jeffrey W. Hutter, is an opportunity to recognize students with individual awards and to celebrate the achievement of graduation with all of the students. ■



BU NIGHT AT THE POPS

On the evening of Saturday, May 18, 2013, members of the BU community gathered at Symphony Hall for the 99th annual BU Night at the Pops. Among them, Dean and Mrs. Jeffrey Hutter joined 50 graduates, family, faculty, staff, alumni, and friends of GSDM for an evening of auditory enjoyment. ■

ALL-UNIVERSITY COMMENCEMENT

Members of the GSDM Class of 2013—along with faculty, family, friends, and others from the GSDM community—were among the some 20,000 guests attending the 140th Boston University All-University Commencement, held Sunday, May 19, at Nickerson Field. ■

(top) A graduation cap decorated with the Boston Strong theme honoring victims of the Boston Marathon Bombing
(right) Honorary degree recipient Morgan Freeman walks through the crowd of graduates, fist bumping them, as he takes the stage during Boston University's commencement proceedings on Nickerson Field.





“Suite” Benefits for Oral Surgeons & Patients ▶

*The procedure room in the
brand new Oral Surgery Patient
Treatment Center*

STATE-OF-THE-ART PATIENT TREATMENT CENTER OPENS IN JUNE

The Department of Oral & Maxillofacial Surgery opened a state-of-the-art, 7,100 square-foot Patient Treatment Center at the Henry M. Goldman School of Dental Medicine (GSDM). Upon dedicating the suite on Thursday, June 27, 2013, Dean Jeffrey W. Hutter called it “a model for other Surgery programs to emulate” and cut the ribbon to the new space along with Chair of the Department of Oral & Maxillofacial Surgery and Associate Dean for Hospital Affairs Dr. Pushkar Mehra.

The suite was renovated to include a new procedure room equipped with the latest technology, including an ergonomic gas boom to deliver medical gases to patients and an LED overhead light, which delivers the brightest natural light for any surgical procedure. The suite was outfitted with a new Sirona Orthophos XG-5 Panoramic X-ray (Pan-Ceph) unit for diagnostic and treatment planning and to provide our surgeons more accurate and reliable images of their patients.

Each treatment bay has a digital X-ray unit installed in it. The waiting areas now have large flat screens for providing patient education and entertainment prior to treatment. And all of the office areas were upgraded with new workstations, office furniture, and carpeting. New lockers and a new break room were also added.

Dr. Mehra commented that, upon completion of this renovation, Oral Surgery now feels at home at both Boston Medical Center and the School of Dental Medicine.

Dean Hutter said, “I am so very gratified that the Department of Oral & Maxillofacial Surgery, especially the Oral Surgery Group Practice, demonstrated their confidence in this project and our School by helping to fund this extensive renovation. I am personally grateful to each of you for the leadership and support you have provided.”

Supporting the project were: Dr. Pushkar Mehra; Immediate Past



Smiles, scissors, and surgery!

(top) Dean Jeffrey W. Hutter and Dr. Pushkar Mehra cut the ribbon to the new Oral Surgery suite at the dedication in June (right) the new Sirona Orthophos XG-5 Panoramic X-ray (Pan-Ceph) unit

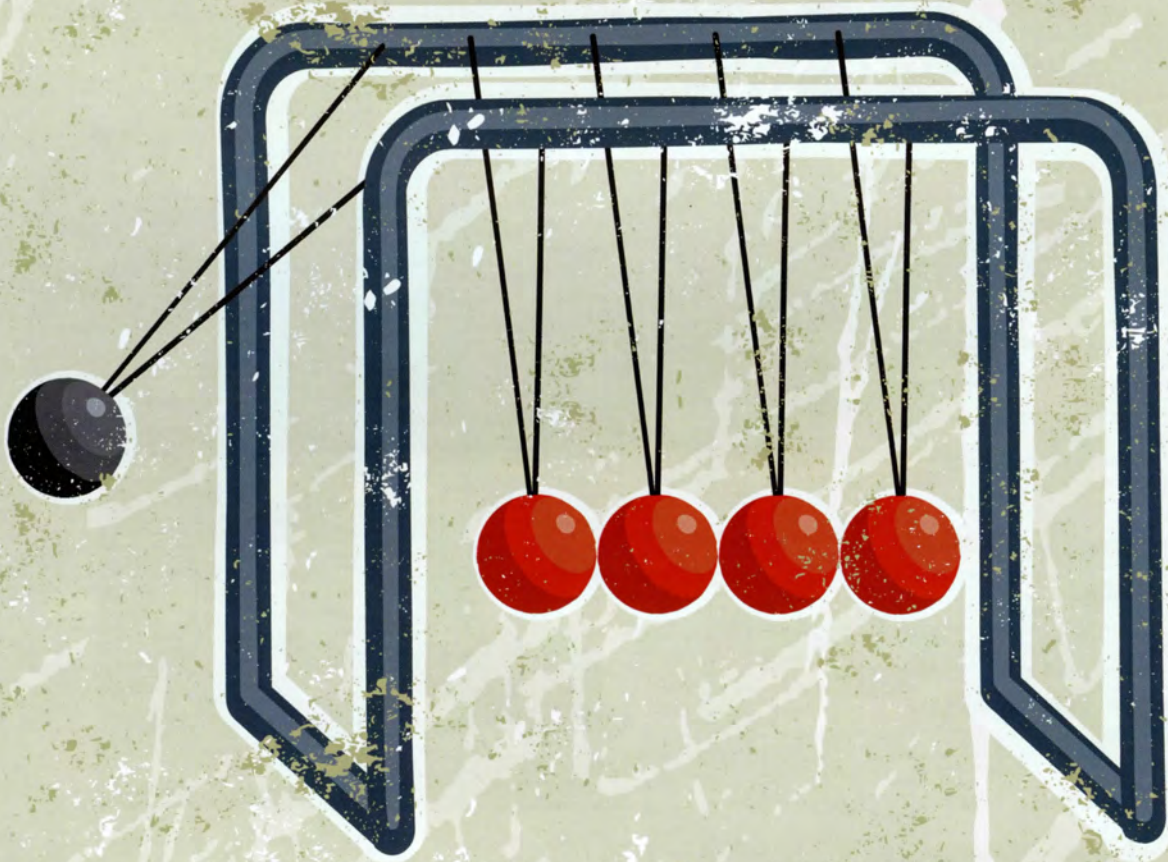


Chair of the Department of Oral & Maxillofacial Surgery Dr. David Cottrell; Assistant Professor Dr. Hussam Batal; Clinical Associate Professor and Director of Pre-doctoral Education Dr. Richard D’Innocenzo; Clinical Assistant Professor Dr. Steven Bookless; and Eyad Haidar DMD 95, PROS 97. Dean Hutter and Chair Mehra also recognized Executive Director of Finance & Operations Tim McDonough and Director of Facilities & Operations Andrew Burke for all of their efforts and support in making the Suite a reality.

Dean Hutter welcomed special guests at the suite dedication: Chief

Executive Officer and President of Boston Medical Center Ms. Kate Walsh; Associate Provost for Graduate Medical Sciences at Boston University Medical Campus Professor Linda Hyman; Professor and Chair of Otolaryngology at Boston Medical Center and Boston University School of Medicine Dr. Kenneth Grundfast; Boston University Medical Campus Executive Director of Facilities John Barton; GSDM Alumni Association President Dr. Mitch Sabbagh; and President of the Boston University Alumni Council Shadi Daher DMD 90, OMFS 94. ■

Spotlight



Reorganization

of the

Henry M. Goldman

School of Dental Medicine

➔ **At the June faculty and staff meeting, Dean Jeffrey W. Hutter announced a significant reorganization of the administration of the Boston University Henry M. Goldman School of Dental Medicine (GSDM). "These changes will position our School to best continue the implementation of our Applied Strategic Plan and be consistent with President Brown's directive for each School and College of the University to closely examine the span of control within its administrative structure," said Dean Hutter. "These changes will also enable us to accomplish our mission while achieving our vision of becoming the premier academic dental institution promoting excellence in dental education, research, oral health care, and community service to improve the overall health of the global population."**

The changes related to the reorganization are as follows.

Clinical Services and Strategic Initiatives

The offices of Clinical Services and Strategic Initiatives were eliminated, and therefore also the positions of associate dean for clinical services and associate dean for strategic initiatives. "Drs. Stephen Dulong and Paula Friedman have both devoted their careers to GSDM, and the contributions they have made to our students and administration are immeasurable," said Dean Hutter. "They have helped to shape this institution for more than 35 years and, as we celebrate our fiftieth anniversary, I want to acknowledge and thank both of our esteemed colleagues for all they have done and will continue to do for our School."

A 1975 graduate of the inaugural DMD class of GSDM, Dr. Dulong joined the faculty as an assistant professor in 1978, upon completion of his postdoctoral training in prosthodontics at GSDM. He was appointed associate professor and director of pre-doctoral restorative sciences in 1982. He was then appointed assistant dean for clinical services in 1997 and promoted to associate dean for clinical services in 2000. Dr. Dulong has served on and chaired virtually every GSDM clinical committee and task force, to the School's great benefit. He was instrumental to the successful reaccreditation of GSDM and has been an influential and vital member and goal champion of our Applied Strategic Plan (ASP). He currently serves as a distinguished member of the Commonwealth of Massachusetts Board of Registration in Dentistry.

Dr. Friedman joined the faculty as assistant professor in 1978, was promoted to associate professor in 1983,

and to professor in 1992. After serving in a variety of administrative positions, she was appointed assistant dean for administration in 1987, promoted to associate dean for administration in 1991, and later appointed associate dean for strategic initiatives in 2009. Dr. Friedman has served as chair of the Core Accreditation Committee and overseen successful reaccreditation of GSDM since 1989. She has served on a wide variety of committees and task forces, and has played a significant role in the implementation of our ASP. In line with her expertise in geriatric dentistry, she also directs the GSDM Geriatric Dentistry Fellowship Program. An ardent supporter of organized dentistry, Dr. Friedman is a past president of the American Dental Education Association, and immediate past president of the Massachusetts Dental Society.

Both Drs. Dulong and Friedman will remain on at GSDM as faculty members and will bring their considerable talents and expertise to teaching our students and residents, while still partaking in specific administrative duties.

Dr. Dulong will use his experience and expertise in restorative dentistry to teach in the pre-doctoral DMD program as an associate professor of general dentistry, while continuing to play an important role as a member of the Applied Strategic Planning Committee, the Dean's Council on Ethics and Professionalism, and the Task Force to Implement Digital Dentistry at GSDM.

Dr. Friedman, as professor of general dentistry, will devote the majority of her time to the educational activities of the Department of General Dentistry, with a teaching emphasis on oral healthcare for geriatric dentistry patients, while continuing as director of the Geriatric Dentistry Fellowship Program. She will also continue her participation in administrative activities such as pre-doctoral admissions, the Dean's Council on Ethics and Professionalism, and the Applied Strategic Planning Committee.

Oral & Maxillofacial Pathology

Oral & Maxillofacial Pathology no longer exists as a stand-alone department and has been relocated to the Department of Oral & Maxillofacial Surgery, chaired by Dr. Pushkar Mehra, as the Division of Oral & Maxillofacial Pathology (OMFP). Dr. George Gallagher has assumed the new title of director of the division of oral & maxillofacial pathology. In addition, Dr. Vicki Noonan joined the division as associate professor and director of the clinical oral & maxillofacial pathology practice.

CONTINUED ➔

“I am confident that this reorganization will allow all of us to serve our patients, students, faculty, staff, alumni, local community, friends, and the research community more effectively.”

—Dean Jeffrey W. Hutter

Oral Biology

Oral Biology has been relocated from the Department of Periodontology & Oral Biology to the Department of Molecular & Cell Biology, chaired by Dr. David Levin. The former Department of Periodontology & Oral Biology has been renamed the Department of Periodontology, chaired by Dr. Serge Dibart. All faculty and staff engaged in oral biology research have been reassigned to the Department of Molecular & Cell Biology. Dr. Philip Trackman's administrative title was changed from director of oral biology research to director of graduate programs in the Department of Molecular & Cell Biology.

Clinical Affairs and Business Development

In addition, two new offices were established: Clinical Affairs and Business Development.

In Clinical Affairs, Dr. John Guarente was promoted to associate dean for clinical affairs. In this role, Dr. Guarente has broad responsibilities focused on achieving the School's clinical mission as it relates to promoting excellence in dental education, research, oral health care, and community service to improve the overall health of the global population. This includes leadership and direction in the establishment, expansion, and evaluation of GSDM's patient-focused comprehensive oral health care programs.

Director of the Group Practice Experience & Team Leadership Dr. David Russell will continue to report to Dr. Guarente, and Associate Director of Quality Assurance Aljani Stanley now reports to Dr. Guarente. As the associate dean for clinical affairs, Dr. Guarente also provides oversight of the clinical department chairs, the directors of

the Advanced Specialty Education Programs, director of the Advanced Education in General Dentistry Program, and the clinical faculty as related to the oral health care provided in the pre- and postdoctoral patient treatment centers.

In addition, John Reilly was promoted to the position of director of clinical finance & operations, reporting to Dr. Guarente. In this role, Mr. Reilly is responsible for managing and overseeing the operations of the pre- and post-doctoral patient treatment centers. This includes the management of the Clinical Finance Office and the areas related to clinical administration and patient relations. He will also be taking on the responsibility of serving as the School's compliance officer.

In regard to Business Development, Dr. Margaret Errante was promoted to assistant dean for business development. In this role, Dr. Errante provides oversight of the GSDM ASP, specifically assisting with the development of business plans on projects that are identified as crucial to the continued successful implementation of the GSDM ASP. This includes working with the Communications Office in the development of clinical marketing and branding campaigns for GSDM; analysis of external and internal factors that would influence the business affairs of GSDM; and oversight of the GSDM Continuing Education Program. Although no longer serving in the position of director of clinical operations, Dr. Errante will continue in her role as director of the BU Dental Health Center at 930 Commonwealth Avenue. Dr. Zhimon Jacobson, director of continuing education, and Mr. Gurjinder Gill, senior project manager, now report to Dr. Errante.

These changes follow other significant administrative changes made on January 1, 2013, when Dr. Thomas Kilgore stepped down as associate dean for advanced education & international programs. At that time, Advanced Education was consolidated into Academic Affairs under the direction of associate dean for academic affairs, Dr. Cataldo Leone. On February 1, 2013, International Programs was then consolidated into the newly established Global & Population Health office under the direction of Dr. Michelle Henshaw, who was promoted to associate dean for global & population health.

In a message to the entire GSDM community, Dean Hutter said, “I am confident that this reorganization will allow all of us to serve our patients, students, faculty, staff, alumni, local community, friends, and the research community more effectively. It is again my honor and privilege to serve as your dean as we Choose to be Great, and in so doing achieve our vision. I could not be more excited and confident about our future, and I thank each of you for all of your efforts and continued support.” ■



The Fight Dentists

TWO ALUMS WHO COULDN'T FIGHT THEIR LOVE

The story of Adam Persky and Silva Battaglin (both DMD 90) is, to put it in Facebook terms, "complicated." It is made up of fateful friendships, an entire School of Dental Medicine trying to make a love connection, and a penchant for mouth guards. Their love—slow to develop as it was—led them to follow each other on a journey full of excitement, challenges, and the support of family and friends. Eventually, they moved into the unexpected role of "unofficial official dentists of Ultimate Fighting."

(left to right) Adam, Dacia, Kiras, and Silva outside The Fight Dentists practice

“It all started in Room 301.”

—Silva Battaglin

➔ “It all started in Room 301,” says Silva. She and new friend Monique Mabry DMD 90 (now Mabry Bamel, married to classmate Jonathan) judged their male classmates as they entered. “When it got to Adam, I said, ‘NOT nice. Very arrogant.’”

As luck would have it, Silva’s clinic bay would be located beside Adam’s.

The class of 1990 was smaller than most. “If there were 54 people in our class, there were about 20 of us that were a little clique and we were always in school or someone’s house hanging out,” says Adam. He also spent time with his many friends in Boston who came from his home state of New York—a habit that led Silva to more strongly assert his arrogance and jokingly call him “Mr. Social Butterfly.”

But during that first year of school, something changed. Maybe it was the fact that Silva was dating Adam’s roommate, Eric Gott, or the fact that Adam was just so darned nice to her and her friends. They dispute the timing, as if they’re still not quite sure when or how it happened.

“Somewhere along the line, he was my best friend,” Silva says.

The “clique” continued to travel together. They went to Eric’s parents’ ski house in Killington. They went to Florida for the 25th anniversary of Loretta Castellanos Nunez’ DMD 91 parents. They visited Adam’s family in New York. They went to Toronto, Silva’s hometown. Silva’s grandmother met Adam and predicted he and Silva, still just friends, would marry.

“When Eric and I broke up after two and a half years, Mister here started making his moves,” Silva says. “The whole school was trying to get us together. It was hilarious. They’d say, ‘What’s wrong with you? He treats you so well!’”

Adam and Silva’s practice is Vegas at its best. With a real UFC fight cage and apparel next to sumptuous chairs and curtains, you might wonder if you’re in a ring, a luxury hotel, or a dentist office.



Just before the start of their senior year, Silva’s roommate decided to move in with her boyfriend, leaving Silva in a panic with an apartment to pay for alone. She moved into a two-bedroom in Malden with best friend Adam. Silva supported him through the loss of his mother at Christmastime. Before she passed, his mom gave Adam her blessing to pursue a relationship with Silva. They returned to Malden in early 1990 and slowly became a couple. They graduated that summer.

Turning down a teaching offer at GSDM, Silva followed Adam to New York so they could be close to his father, who was lost after the death of Adam’s mom. The two found jobs, Adam working at a cousin’s clinic and Silva working at a private practice treating (as she came to learn) players on the New York Mets and Jets. Just a few months later, family matters called again when Silva’s father died. She gave up her impressive job to return to Toronto to help her mother. This time, Adam followed her.

They were engaged in the summer of 1991, and Silva’s mom lent them the money to open an 825-square-foot practice in Toronto. They married two years later, and two years after that bought a house and added on a dental clinic, moving the first practice. They helped pay for Silva’s brother, Roberto Battaglin DMD 98, to attend dental school at BU. They stayed in Toronto for six more years, until Silva’s mother died.

Tired of Canada, the two planned a return to New York. Their Toronto practice and home sold right away. They found an ideal street-level practice for sale in the Murray Hill section of Manhattan and prepared to close the deal on September 18, 2001. Once again, unexpected circumstances would change their plans.

Adam recalls hearing about post-September 11 Manhattan. “There was Anthrax in the building I had just had lunch in. There were armed guards in the tunnels. Grand Central Station was like a prison. I thought, what are we heading into?”

Now with two young children, Kiras and Dacia, they decided not to move. But they would soon have no business and no home. They may as well have pulled Las Vegas out of a hat, but it fit two important requirements: warm and far.



(bottom) Fight Dentist mouth guards, including one made for Nevada Secretary of State Ross Miller



By spring 2002, they were licensed, with jobs. After a brief stint working for others, they opened SMILESHAPERS, taking the name from their general dentistry practice in Toronto. Another holdover from their time in Toronto, the much-lauded mouth guards they made for the Ontario Minor Hockey Association, would prove to be the key to their success in Vegas.

"We knew nothing about martial arts," Adam says. "I said to the hygienist, 'Get the Yellow Pages and call all the boxing gyms. It's Vegas. There've gotta be boxing gyms everywhere. Tell them we do mouth guards at a good price.'"

One gym bit, and it opened the door to the boxing world.

"All of a sudden we started getting referrals to big name boxers," Adam says. "They loved our mouth guards."

But in Vegas, the game is not what you know but who you know. Silva and Adam would still have to work hard and make more connections.

"All the fighters we met had been wearing the worst mouth guards," Adam says. "So we wanted to do a study on mouth guards. One day, Adam found himself venting his concerns to the right person. The mother of daughter Dacia's friend knew someone who knew someone—and in one day they had an invitation to meet with Commission doctors, and soon after, an invitation to do the study.

"We went to all the weigh-ins for both boxing and martial arts to measure and photograph mouth guards," Adam says. "We networked as much as possible."

Around that time, former professional boxer and sports broadcaster James "Smitty" Smith was sitting in Adam's dental chair. "You know Muhammad Ali's doctor, Ferdie Pacheco?" Smitty said, "They called him the Fight Doctor. You're the Fight Dentists." And the name stuck.

The Ultimate Fighting Championship (UFC) was just starting, and someone wanted to introduce The Fight Dentists to the owners of the UFC gym. The gym manager asked them to make mouth guards for the fighters and offered them gym memberships.

"We didn't even know what we were being invited to work out in at first," says Adam. "It turned out to be the private, invitation-only gym of the UFC president, Dana White, and Lorenzo Fertitta." Fertitta is CEO and chair of UFC's parent company, Zuffa.

Silva and Adam continued working out at the gym and making mouth guards, known only as "doc" to the fighters. Until one day, Adam saw Dana in the locker room and took a chance.



Find The Fight Dentists online:

fightdentist.com

vegasmakeover.com

Fightdentist on Facebook

@Fightdentists on Twitter

"I said, 'Dana, can we make the mouth guards for the Ultimate Fighter TV show?' He said, 'Sure!' I said, 'Can we get a credit?' He said, 'Yeah!'"

As the UFC grew, so did Silva and Adam's reputation for quality mouth guards. They were invited to fight summits at Red Rock to make mouth guards for hundreds of fighters at a time. Suddenly, every UFC fighter was wearing a Fight Dentist mouth guard.

When season nine of the TV show began (The Ultimate Fighter: United States vs. United Kingdom), Spike TV asked for custom USA and

UK mouth guards for its commercials. Adam says that is what "put them over the top." Their mouth guards were now being promoted on TV and promos at fights.

Then mixed martial arts apparel company RevGear approached them to license boil and bite mouth guards. Silva came up with the designs. Now RevGear sells them internationally. The Fight Dentists are in the process of launching a unique graphic youth guard with a removable strap.

"Now if a child is playing football and it's mandatory to have the mouth guard with the strap, but then he wrestles and needs a strapless one, he can use the same mouth guard for both sports," Silva says.

So are The Fight Dentists the official dentists of the UFC?

Adam explains. "We used to say we were the official dentists of the UFC. As the UFC grew, and so did the lawyers, we couldn't say it anymore unless we wanted to pay a big licensing fee," he says, laughing.

"They told us we can say we're the unofficial official dentists of the UFC, whatever that means," says Silva.

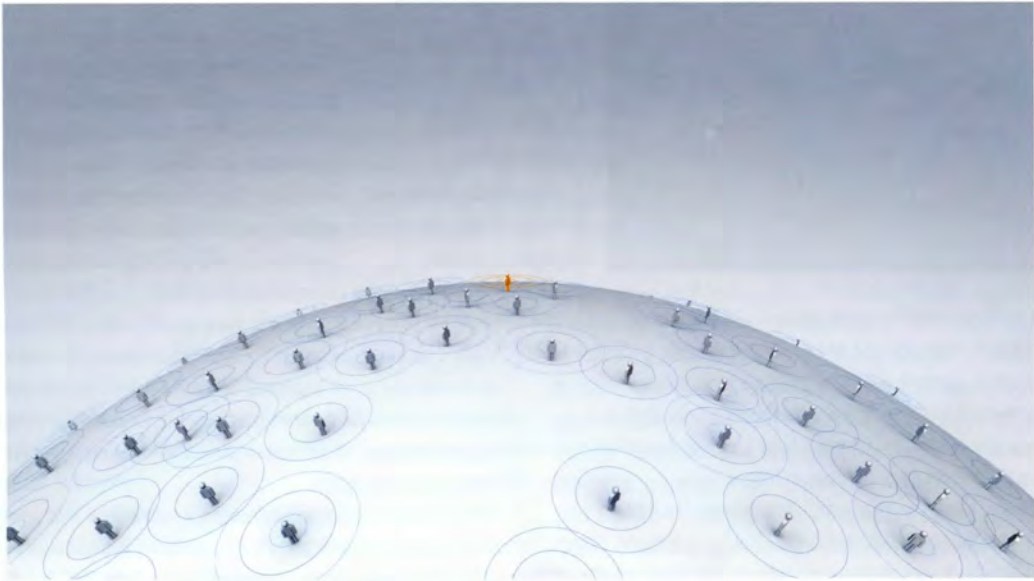
Adam clarifies. "We are the dentists for the UFC. We don't use the word official." Whatever the Fight Dentists are to the UFC, it's clear the two are forever linked. "The UFC has given us a name," Adam says.

They are so well known, in fact, that they now consider mouth guards their primary business. They have downsized their practice to a one-bay dental center/fight apparel shop just a few miles from the Las Vegas Strip. The two work alternating days treating fighters, tourists with dental emergencies, and plain old civilians in an office where you'll find dental burs a few feet away from a professional cage wall, sleek Vegas furniture, and fight gear for sale.

As if they didn't have enough keeping them busy, they recently signed on as analysts with the national dental practice transition consulting network AFTCO. They also travel the US (particularly the Northeast) with Dacia, who is being recruited by several universities' lacrosse teams.

It is impossible to predict what may lie ahead for The Fight Dentists. Perhaps they will follow Dacia back to Boston, though Silva promises they will always keep a home in Vegas.

Wherever they go, it's sure to be an adventure. ■



GLOBAL HEALTH

In February 2013, Dean Jeffrey W. Hutter appointed Dr. Michelle Henshaw as associate dean for global & population health and leader of the new Global & Population Health Office at the Boston University Henry M. Goldman School of Dental Medicine (GSDM). In her new position, Dr. Henshaw has wide-ranging and diverse responsibilities—many of them focused on developing and showcasing GSDM's role in advancing global health.

A widely used definition of global health is “an area for study, research, and practice that places a priority on improving research, and practice that places a priority on improving health and achieving health equity for all people worldwide.” (Koplan JP, Bond TC, Merson M, Reddy KS, et al. for the Consortium of Universities for Global Health Executive Board (2009). Towards a common definition of global health. *Lancet* 373:1993-1995.)

At its core, global health is interdisciplinary in nature, relying on collaboration among all of the health professions, public health, engineering, and innumerable other fields to improve research and practice, ultimately achieving health equity for all people worldwide. Dentistry and dental education are integral to an increased focus on global health. GSDM is a member of the Consortium of Universities for Global Health (CUGH), which was established in 2009. The Bill & Melinda Gates Foundation provided the leadership and funding to plan this consortium, and the Rockefeller Foundation provided a grant to help develop the organizational structure of CUGH in its first year of existence.

CUGH aims to define the field and discipline of global health, standardize required curricula and competencies for global health, define criteria and conditions for student and faculty field placements in host institutions, and provide coordination of projects and initiatives among and between resource-rich universities and less-developed nations and their institutions.

CUGH is dedicated to creating balance in resources and in the exchange of students and faculty between institutions in rich and poor countries. The consortium recognizes the importance of equal partnership between the academic institutions in developing nations and their resource-rich counterparts in the planning, implementation, management, and impact evaluation of joint projects.

A Global Health Interest Group was formed during CUGH's 3rd Annual Meeting in 2012. The group's first initiative is the development of global oral health competencies. Dean Jeffrey W. Hutter is a member of this group and is taking the lead in developing Oral Health Competencies for non-dental health care professionals; specifically physicians, physician assistants, nurses, nurse practitioners, and pharmacists. Once adopted, these competencies will provide a clear roadmap for the integration of oral health into comprehensive global health initiatives.

The mission of the Global & Population Health Office at GSDM is to develop, promote, and sustain interdisciplinary domestic and international health initiatives with the aim of enhancing the educational experience of students and improving the health of the global community. The office actively supports student, faculty, and

staff in their efforts to improve the health of the world's populations and to facilitate interdisciplinary health research, teaching, and practice across all departments and programs in the University, with a special emphasis on global health and interprofessional care.

The Global & Population Health office is working to provide opportunities to meet an increasing demand for both local and international experiences in which students can make a positive change in the overall health of the populations they serve. In addition, by building capacity and infrastructure in underserved communities, these activities will broaden students' understanding of how their lives and careers fit within a global perspective. Their experiences will help prepare them to face the challenges and opportunities that the future will bring the dental profession.

Dr. Henshaw has been charged with establishing an organizational structure that (1) identifies and addresses the challenges of developing and conducting global health training, research, and service projects; (2) partners with the School of Medicine, School of Public Health, and health-related professional schools on the Charles River Campus to create programs that will rigorously prepare trainees for collaborative practice and interprofessional care; (3) administers national and international community-based education programs; (4) administers and expands the GSDM community service and service learning programs; and (5) seeks funding for innovative research and educational programs that will catalyze the development of interdisciplinary translational research projects that provide a firm scientific base for clinical practice and public health policy.

In addition, Dr. Henshaw retains her previous responsibilities related to Community Health Programs, the Northeast Center for Research to Evaluate and Eliminate Dental Disparities (CREEDD), and Community Partnerships and Extramural Affairs.

“Establishing the Global & Population Health Office was an important strategic expansion for our School as we continue to contribute to the global profile of Boston University,” said Dean Hutter. He continued, “It is equally important that we continue to develop and nurture the programming that we provide in our local communities.”

This issue of Impressions offers an overview of the remarkable breadth and depth of GSDM's impact in local communities; a snapshot of the impact GSDM had during Boston University's Global Days of Service this year; a feature story on a partnership being developed to provide dental care to families in Guatemala with plans to partner with the Schools of Public Health and Medicine to improve the overall health and well-being of the community; and an introduction to the newest GSDM global externship partnership with China. ■



Believe in miracles

GSDM and Mil Milagros Form Partnership in Guatemala



The Boston University Henry M. Goldman School of Dental Medicine (GSDM) and Mil Milagros (“A Thousand Miracles”) are developing an extensive partnership to provide dental care to families in Guatemala.

A nonprofit organization based in Boston, Mil Milagros (MM) works to ensure that children in Guatemala graduate from the sixth grade healthy, literate, and prepared to continue their education. That’s a tall order in a country where 37 percent of the population of 14 million are younger than 15 years old.

Child policy expert Margaret Blood is the founder of MM. “At least half of the children served by MM have never seen a dentist. In three of MM’s six partner communities, there are no dentists,” she said.

The chain of events leading to GSDM’s involvement with MM started in December 2012, when Boston University Senior Vice President, Chief Financial Officer & Treasurer Martin Howard received information about MM from a friend who served on its board. Finding MM’s efforts in Guatemala remarkable, Howard forwarded the details to GSDM Dean Jeffrey W. Hutter and Associate Dean for Global & Population Health Dr. Michelle Henshaw for review. Next, Dr. Henshaw and Director of Global Initiatives Kathy Held discussed the opportunities and strategies for tackling dental care needs in the area with Blood.

Things moved quickly. Held and frequent GSDM externship preceptor Dr. Fred Kalinoff traveled to Guatemala in January 2013 and trained 10 MM mother leaders and two MM staff members in the application of fluoride varnish.

“Margaret Blood’s accomplishments in Guatemala were truly inspirational,” said Held. “The experience overall was so humbling, and it opened my eyes to the scarcity of provisions for these people. They welcomed us into their villages and homes and worked diligently to complete the training.”

Looking to the future, GSDM and MM envision a partnership that will bring teams of dental students, faculty, and alumni to Guatemala to provide dental expertise in MM’s partner schools and communities. These teams would provide essential care, including oral hygiene education for children, families, and teachers; dental care for children and families; training for mother leaders in all MM partner communities to offer fluoride varnish clinics semiannually; and partnerships with Guatemala’s Ministry of Health and local dentists and health centers in order to strengthen the capacity of local providers.

MM is also interested in expanding the partnership to other schools and colleges within Boston University. Public health, nutrition, and medical care initiatives



“The partnership will make a profound impact in the lives of some of the world’s poorest children and their families by providing them with access to quality dental health care—for the first time in their lives.”

—Margaret Blood, founder

(right) After lunch, the children brush their teeth as part of MM’s health and hygiene program.



could significantly improve the health and well-being of the children MM serves.

GSDM is taking the lead in bringing together representatives from the School of Public Health and College of Health & Rehabilitation Sciences: Sargent College to discuss the potential for collaboration and the development of interprofessional field experiences. Such initiatives include programs to promote school-based hygiene and access to potable water. Malnutrition is often an issue in these communities, and Sargent College might provide nutrition training for MM staff and assistance identifying strategies for improving the nutritional value of meals to ensure that the children receive the best nutritional “bang for the buck.” Future initiatives could include the BU School of Medicine; primary care services are almost completely lacking in MM’s communities.

GSDM has also initiated conversations with partner institution New England College of Optometry, and plans are underway to have its students offer vision screenings and glasses for the children.

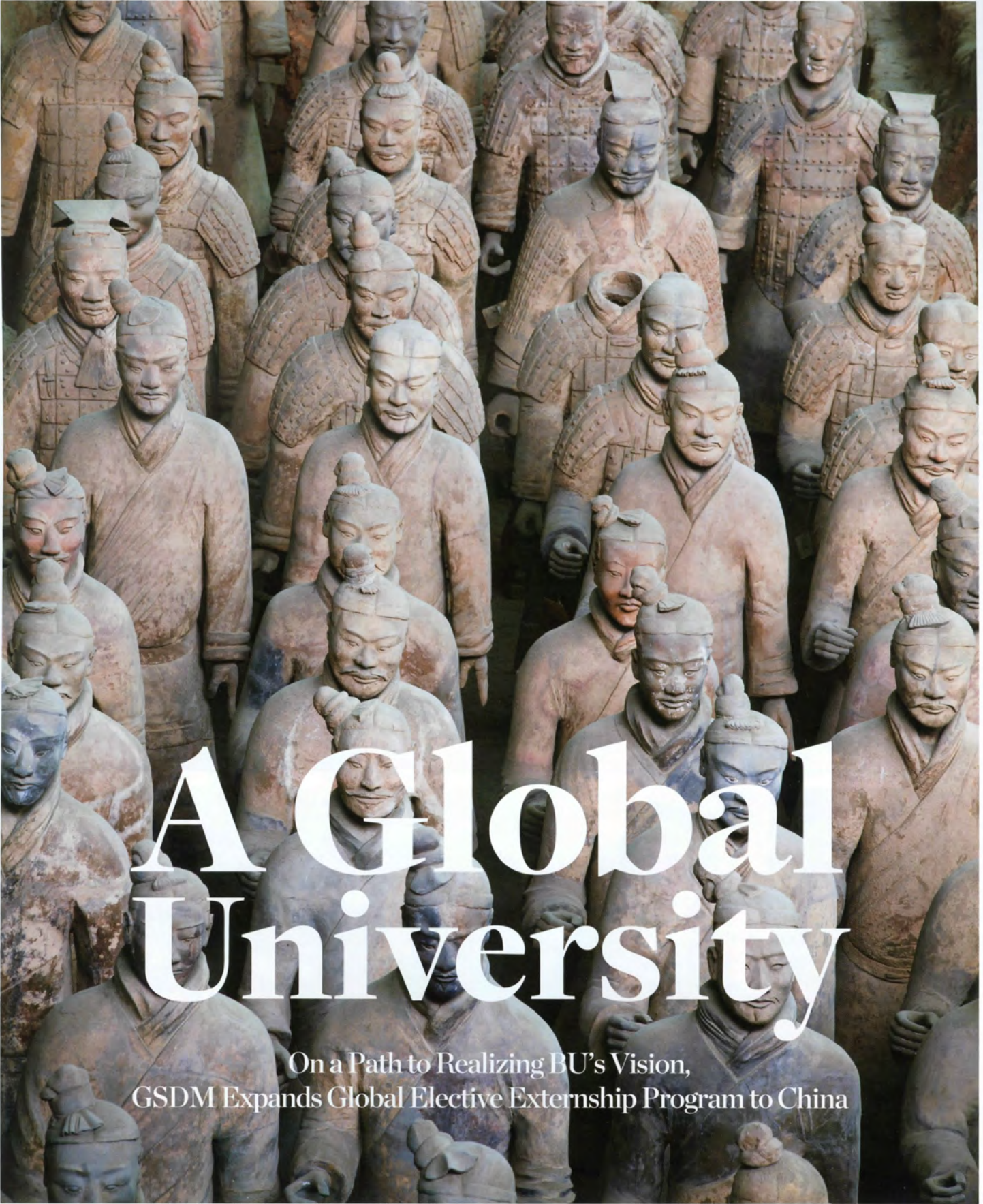
“The MM/GSDM partnership will make a profound impact in the lives of some of the world’s poorest children and their families by providing them with access to quality dental health care—for the first time in their lives,” said Blood. “By working together with these communities we have a tremendous opportunity to strengthen the children’s oral hygiene and improve their health and well-being over the long term.”

Dr. Henshaw affirmed Blood’s belief that combining the School’s resources with MM’s could mean a significant improvement for families in Guatemala. “As we embark on this new partnership with Margaret Blood and Mil Milagros, our goals are to increase access to dental care and provide training and knowledge to these communities,” she said. “The Henry M. Goldman School of Dental Medicine is excited to begin its next chapter in Global & Population Health initiatives in Guatemala.” ■

A thousand miracles, every day

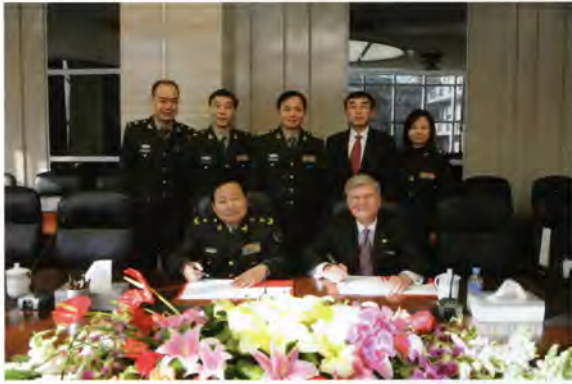
(clockwise, from top right) Mil Milagros (MM) Founder and President Margaret Blood; lice shampoo workshops are an important part of MM's health and hygiene program; kindergarten children are served lunch by their teacher; MM feeds nearly 1,000 children, mother volunteers (who are the cooks), and teachers each school day; children in MM's early childhood nutrition program to prevent malnutrition and stunting pose with MM's In-Country Director Carolyn Daly. Photos courtesy of Margaret Blood and Carolyn Daly.





A Global University

On a Path to Realizing BU's Vision,
GSDM Expands Global Elective Externship Program to China



Students will be in Xi'an, the site of the Terracotta Army (opposite page), when they visit FMMUSS. (left) Signing Ceremony at FMMUSS: (clockwise from top left) Dr. Qin Ma, professor and department chair of oral and maxillofacial surgery; Dr. Shipu Liu, professor of oral and maxillofacial surgery; Dr. Jihua Chen, dean of FMMUSS; Dr. Laisheng Chou; Dr. Suming Guan, associate professor and program leader; Dean Jeffrey W. Hutter; and FMMUSS President General Yiming Zhao

Boston University Henry M. Goldman School of Dental Medicine (GSDM) will expand its Global Elective Externship program during the 2013-2014 academic year to include an exchange program with two institutions in China: Shanghai Jiaotong University School of Stomatology (SJUSS), located in Shanghai, and the Fourth Military Medical University School of Stomatology (FMMUSS), located in Xi'an.

Four GSDM DMD 14 students have been chosen to closely observe two weeks of rotations in oral and maxillofacial surgery under the supervision of SJUSS and FMMUSS faculty, one week at each university. In return, GSDM will accept students and scholars from SJUSS and FMMUSS for clinical observation and/or research experience in various specialties at GSDM next summer.

"This unique exchange program builds upon the strengths of each institution and each country's health care delivery system," said Dr. Michelle Henshaw, associate dean for global and population health. "GSDM is the first and only US dental school to establish a partnership with these two institutions and to provide pre-doctoral dental students with such an enriching clinical experience in oral and maxillofacial reconstruction. The students and scholars who participate in this

program," she continued, "will be exposed to clinical cases that very few oral surgeons in the United States will see in their lifetime."

Professor and Director of the Oral Medicine Program Dr. Laisheng Chou serves as the GSDM program leader. "That our dental school can provide a unique opportunity for the DMD students to experience the diversity of oral diseases and treatments within their four years is outstanding," said Dr. Chou, who will take overall responsibility for the visits of the students from SJUSS and FMMUSS.

In his "Strategy for a Global University," Boston University President Robert A. Brown states, "I believe that the future success and impact of Boston University as a great private research university will be interwoven with our presence as a truly global university in the 21st century." The GSDM exchange programs with FMMUSS and SJUSS will form part of the foundation of the global BU.

Dean Jeffrey W. Hutter said, "I am extremely proud that the Henry M. Goldman School of Dental Medicine is providing this unique and outstanding experience for its pre-doctoral students." He continued, "I am also pleased to see the School expand its contribution to the realization of Boston University as a global university."

(left to right) Lili Zhang, assistant director of the Dean's Office; Dr. Xiping Feng, associate dean of research; Dr. Jianzhong Zhang, associate dean of clinical affairs; Dr. Zhiyuan Zhang, dean; Dean Jeffrey W. Hutter; Dr. Laisheng Chou; Dr. Guofang Shen, associate dean; and Dr. Jiawei Zheng, associate dean of academic affairs and program leader



Signing Ceremony at SJUSS

A UNIQUE AND TRANSFORMATIVE EXPERIENCE

With minds wide open, four GSDM pre-doctoral students will depart Boston on October 11 for Shanghai. The students—Joshua Gilbert, Erik Harriman, Alena Mehtani, and Erica Weinberg—anticipate a clinically and personally transformative experience.

Indeed, the two Chinese universities offer unique clinical and cultural experiences. SJUSS has the world's largest department of oral and maxillofacial surgery and is currently the International Training Center of the Oral and Maxillofacial Oncology and Reconstructive Surgery Training Fellowship Program authorized by the International Association of Oral and Maxillofacial Surgeons. FMMUSS is also a center of expertise and state-of-the-art care and instruction.

Beyond the expertise and advanced technology found at these institutions, the GSDM students will benefit from the sheer volume and variety of cases treated. SJUSS has 260 dental units, serving 880,000 outpatients per year, and 180 hospital beds, serving 6,000 people with oral cancer per year. FMMUSS has 280 dental units and 144 hospital beds for oral surgery patients. At each site they will observe at least five operations on oral cancer patients, such as tumor resection, mandible resection, maxillectomy, micrographic surgery, laryngectomy, and neck dissection. They will also attend daily department rounds for case discussion and consultation, as well as discussion of chemotherapy on the patients with metastatic malignancy.

Gilbert, Harriman, Mehtani, and Weinberg will spend their first week at SJUSS in Shanghai, the most populous city of the most populous country in the world. Before the sun rises each morning, they will accompany their site supervisor, an SJUSS associate professor, to visit patients at their bedsides. They will also observe examinations, treatment planning, surgical procedures, and post-operative care.

In their second week, the students will be at FMMUSS in Xi'an, the capital of Shaanxi province and one of the oldest cities in China. Indicating the city's age is the proximity of the 210-209 BCE burial site of the first emperor of China, Qin Shi Huang, whose funerary art included the famous Terracotta Army. The four will follow the same rigorous schedule as at SJUSS. Some of the surgeries the students will observe will be eight hours long.

Dr. Chou is convinced that the GSDM students will be exhausted by the end of the externship. Though this may be true, judging from the students' powerful enthusiasm, previous experiences, and expectations, they may return with exhilaration that exceeds their exhaustion.

A New Awareness of Oral Cancer

The students experiencing the externship in China will share a new and intensely informed awareness of cancer. "After you leave there, I'm sure that there will never be a patient that goes by you that you don't screen for oral cancer," said Assistant Professor of General Dentistry and Director of Global Initiatives Kathleen Held.

Harriman added, "You get the opportunity to see [cases of cancer] in class on the board, but you might go through dental school and never see a case of oral cancer. When you get out, 15 years later, somebody comes through your door with oral cancer, how are you going to know that that's what it is? The opportunity to see it is going to be priceless for a practitioner who's never seen it before."

Mehtani said, "It takes a certain kind of personality to deal with such extreme cases, and I think this trip will make us a lot stronger and open our eyes to what exactly is out there and what is going on with patients who have oral cancer. This will make us more sensitive to diagnosing them and keeping an eye out for it in our day-to-day work."

All of the students and practitioners at GSDM will benefit when Gilbert, Harriman, Mehtani, and Weinberg return with their expanded understanding of and experience with oral cancer patients. ■

FOUR STELLAR STUDENTS

Dr. Chou presented the opportunity of the externship to China to students in his oral medicine class. The response was overwhelming. Due to the intensity of the program and the very limited spaces, students were selected carefully.

Joshua Gilbert cited Dr. Chou's classes as sparking his interest in the externship. (In fact, all of the students cited Dr. Chou as an inspiration.) Gilbert plans to pursue orthodontics, which overlaps with oral and maxillofacial surgery (OMFS), primarily in the treatment of cleft lips and palates.

Gilbert said, "I won't be able to see these types of surgeries in these types of institutions very often, especially going forward, when I'm not in school. It's something I know I probably won't be doing a lot of in my life, but it will make me more well rounded and I'll be able to speak on subjects other than the ones I'm specifically interested in."

At GSDM, Gilbert maintains an outstanding academic record. His interest in research began with the Applied Professional Experience program he completed during his first year as a DMD student. Gilbert is now vice president of the GSDM Student Research Group.

Erik Harriman plans to specialize in OMFS. His eye-opening trip to Colombia in April 2013 on a cleft palate and lip repair mission intensified both his interest in oral surgery and in seeking experiences outside of the United States.

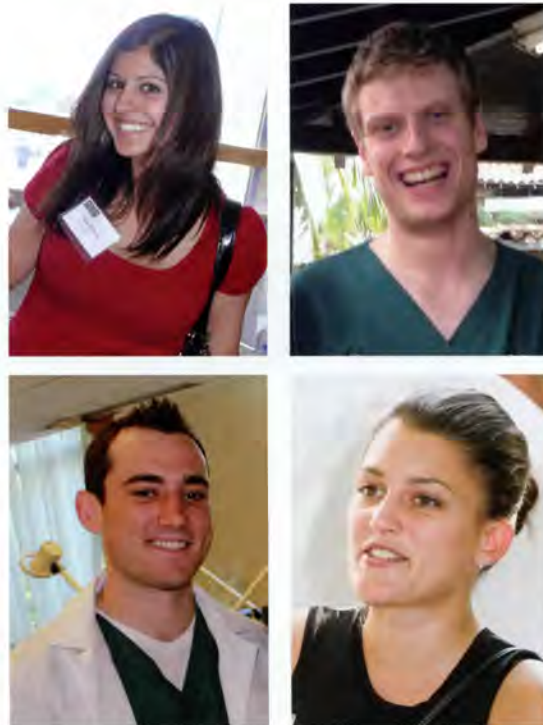
"I am particularly interested in going to China," said Harriman, "because the hospitals we will be going to will give me maximum exposure to the full scope of oral surgery practices. The volume of procedures they are able to accomplish excites me! I can see that this trip would be extremely valuable for a student who is interested in oral surgery; I can tell it's the type of trip you would come back exhausted from, but also refreshed and excited for a career in the field."

Harriman has been active in the BU chapter of the American Student Dental Association (ASDA) as a member of the ASDA legislative committee and as the ethics and professionalism vice chair. He is the recipient of an AADR Research Fellowship and an ADA/Dentsply Award for Research, and is a brother of the Alpha Omega dental fraternity.

Alena Mehtani's international interests began with an observership at a large hospital in India, where she rotated through all of its departments. It was there that she formed a connection with the specialty of oncology. When Mehtani decided to study dentistry, she found the closest connection to oncology in OMFS. Mehtani is particularly looking forward to going beyond the oral and maxillofacial aspect of cancer to the comprehensive oncologic care of the patients while in China. She notes that although she plans to go on to OMFS, future residencies won't offer this type of advanced and specialized exposure to cancer treatment.

"In addition to being a unique learning experience, this exchange program is a once-in-a-lifetime opportunity to experience the culture of two major cities in China, Shanghai and Xi'an."

—Erica Weinberg DMD 14



(clockwise from top left) Alena Mehtani, Erik Harriman, Erica Weinberg, and Joshua Gilbert

(right) Shanghai/Old City
(bottom) Shanghai at night



→ The benefit of the exchange program with SJUSS and FMMUSS will not end with the GSDM students' return.

"The gain of cultural experience extends to residents that will be coming to GSDM from China next summer. That interaction will be both structured in the classroom and involve social activities. Simply sharing the difference in the two countries' educational models and their perspectives on patient care will be eye-opening," noted Dr. Henshaw.

At GSDM, Mehtani has been especially inspired by Dr. Pushkar Mehra, who is chair of the Department of Oral & Maxillofacial Surgery and associate dean for hospital affairs at Boston Medical Center. Dr. Mehra, she says, is very accommodating to students and has kept her interest in OMFS alive. Mehtani has had the opportunity to observe surgeries at Boston Medical Center. She has assisted in multiple Le Fort I and bilateral sagittal split osteotomy surgeries with Dr. Mehra as well as mandible non-union surgeries with Assistant Professor of Oral & Maxillofacial Surgery and Director of Preliminary Internship Program Dr. Timothy Osborn.

Mehtani has also worked as a volunteer with cancer patients at Massachusetts General Hospital in an effort to integrate her interests in oncology and dentistry. She is initiating a pre-doctoral oral surgery club at BU with the support of Dr. Richard D'Innocenzo, who is director of pre-doctoral education for the Department of Oral & Maxillofacial Surgery and vice chairman of Dentistry and Oral & Maxillofacial Surgery at Boston Medical Center.

Erica Weinberg's primary interest is pediatric dentistry; she was immediately excited by the opportunity to gain clinical exposure to what she has learned in the classroom—and further motivated by the opportunity to do this in a global cultural setting. She has spent some time at Boston Children's Hospital in the cleft lip and palate clinic, but has only observed post-operative care.

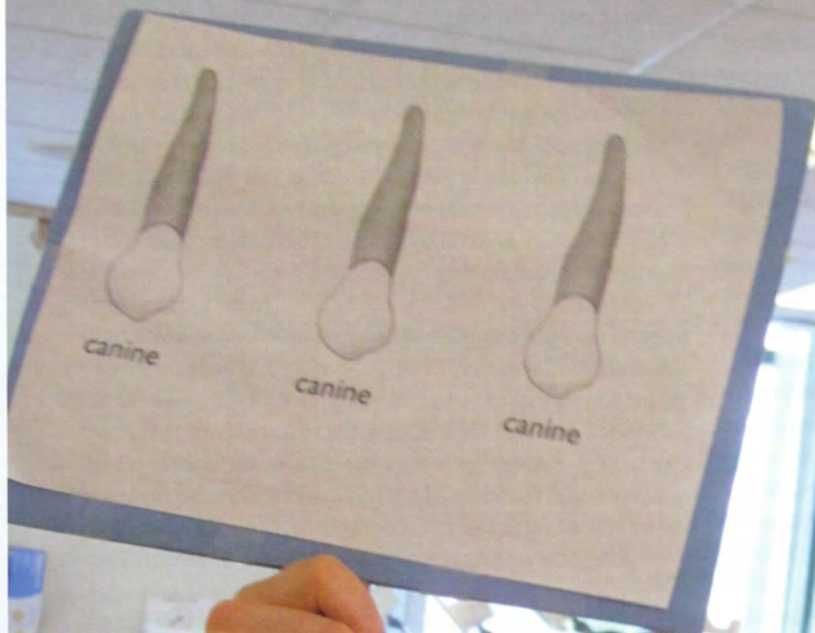
Weinberg said, "In addition to being a unique learning experience, this exchange program is a once-in-a-lifetime opportunity to experience the culture of two major cities in China, Shanghai and Xi'an."

At GSDM, Weinberg has been an active voice for her class in student government, serving as secretary in her first year and treasurer for her second and third years. She has been a member of the BU chapter of the American Association of Women Dentists for her first three years. She also volunteers at the HIV Dental Work Group at the Yankee Dental Congress.

When the students return on October 29, they will be indelibly transformed—both as people and practitioners. They will also have formed part of the foundation of the global BU. ■

COMMUNITY OUTREACH: AN OVERVIEW

Keely Matheson DMD 15 leads the "Canine" group of children during the Blackstone School Third Grade Field Trip to GSDM



COMMUNITY OUTREACH: AN OVERVIEW

Community outreach has been a cornerstone of the Henry M. Goldman School of Dental Medicine (GSDM) since its inception. Improving the overall health of the global population remains a key component of our School's mission. At the same time, community service programs provide indispensable learning opportunities for our students. And opening the eyes of future health care professionals to health disparities in our nation and around the world is, we believe, a vital part of a complete education in dental medicine.

Each year, we pursue our community service goals through more than 70 individual programs and 100 events, annually helping over 15,000 people to receive high-quality oral health care services. That's a lot of people, young and old—but especially young. Take a look at some of our community and school-based programs in Massachusetts cities and towns.

REACHING OUT, WELCOMING IN: GSDM IN THE COMMUNITY

This year the School was involved in 72 oral health promotion programs, initiatives, school field trips, and other community-based outreach activities providing care for populations that have difficulties accessing oral health services, including people who are homeless, financially disadvantaged, uninsured or underinsured, elderly, refugees, or HIV positive. We have been able to reach individuals from very diverse backgrounds and educational levels with oral health preventive services, and in doing so, have helped to promote the oral health and overall health of thousands in the greater Boston area.

Blackstone School 14th Annual Third Grade Field Trip: Imagine 89 third graders at GSDM for a full day! They came from the Blackstone Elementary School in Boston for presentations on oral health and nutrition, a lesson on mouth guards, and interactive activities in the Simulation Learning Center, where they learned about sealants and dental impressions. This field trip provided both interactive health education for children and an opportunity for GSDM students to inspire young children to pursue higher education—and possibly a career in dentistry.

Boston Medical Center (BMC) Food Pantry Food Drive: GSDM's chapter of the American Student Dental Association (ASDA) collected food and raised money for the BMC food pantry, which distributes items to patients referred from all BMC clinics. The Food Pantry feeds approximately 80 families a day and provides three days' worth of food to patients every two weeks.

Boston Sikh Sangat Society Oral Health Fair: Faculty and students sponsored an oral health fair for the Boston Sikh Sangat Society, one of the largest Sikh congregations in Massachusetts. The GSDM volunteers offered health promotion, education, engaging dental activities, screenings, and referrals for both children and adults.

Community Health Outreach Workers' Oral Health Training: A representative from the School provided a three-hour workshop on oral health to Community Outreach Workers enrolled in a certificate program.

Edward W. Brooke Charter School Field Trip: Third-grade students from the Brooke School, a Roslindale charter school, enjoyed a day of educational and fun activities at GSDM in both the classroom and the Simulation Learning Center. The children were eager to learn about life as a dental student, and many came armed with questions to ask the students. They participated in lessons on nutrition and sealants, dressed up as dental students, and made thumbprints using an alginate impression and dental stone.

HIV Dental Care/Ryan White: Through funding from the Ryan White CARE Act, GSDM provided treatment to patients with HIV and AIDS throughout New England. A network for patient education and referral has been established that includes Cambridge Cares about AIDS, Boston University Medical Center, and the AIDS Support Group of Cape Cod.

Mexican Consulate Oral Health Presentation: GSDM is one of several organizations invited to speak to those waiting for appointments to discuss passports at the Mexican consulate in Boston. Faculty gave an interactive presentation on oral health, which was very well received by the engaged audience. A variety of oral hygiene supplies, educational materials, and flyers were distributed, along with a listing of Boston-area dental clinic locations.

New Pentecostal Church Oral Health Outreach: Faculty and GSDM's chapter of ASDA held an oral health outreach event at the New Pentecostal Church in Mattapan that included oral health promotion activities geared toward children, oral health screenings, and referrals. The group screened about 40 people, both children and adults, and handed out oral health supplies.

Notre Dame Educational Center (NDEC) Oral Health Outreach: The NDEC provides instruction to adult immigrants from all over the world, giving its students an opportunity to rebuild their lives as they develop confidence in their ability to communicate in English and further their education. Every year GSDM faculty and students from the School's chapter of ASDA provide oral health outreach to NDEC students, including oral health education, dental screenings, referrals, and provision of oral hygiene supplies.

Refugee Dental Care Week: The Chelsea School Dental Center (CSDC) held its annual Refugee Dental Care Week, providing oral health care to refugees from Somalia and Nepal. Patients received initial comprehensive oral exams, full mouth X-rays, prophylaxis, in some cases scaling, and fluoride varnish applications. Those patients requiring further treatment were given an appointment for their next visit, and all patients received a six-month recall appointment. A pediatric dentist from Chelsea's MGH satellite clinic helped to coordinate the event, along with the CSDC's clinical coordinator. GSDM's annual Refugee Dental Care Week has proven to be very beneficial to refugee populations living in Chelsea.

Roger Wellington Elementary School Oral Health Awareness Day: GSDM provided interactive oral health games and activities, including a puppet toothbrushing demonstration, for 30 children with special needs at the Roger Wellington Elementary School in Belmont. Goody bags with toothbrushes, toothpaste, and stickers were passed out at the end of the presentation.

Rosie's Place Outreach: Rosie's Place, a sanctuary for poor and homeless women, offers emergency and long-term assistance to women who have nowhere else to turn. Founded in 1974, Rosie's Place welcomes each guest with respect and unconditional love. Rosie's Place accepts no government funds, and relies instead on committed volunteers and private supporters to accomplish its mission. GSDM has several initiatives at Rosie's Place.

- **Clothing Drive and Fundraiser:** The student-run GSDM clothing drive collects items guests need during the winter holidays, including socks, gloves, boots, and winter coats.

- **Childworks Program, Dental Health Fair:** Each year faculty and students from GSDM's student chapter of the American Association of Women Dentists set up an interactive dental health

COMMUNITY OUTREACH: AN OVERVIEW, continued

fair for children at Rosie's Place. As in the past, children were taught about the importance of good dental hygiene and how to properly care for their teeth by use of a dental "passport" to guide them through each of the fair's six dental-themed stations. At the end of the tour the children received goody bags containing prizes and oral hygiene supplies.

- **Wellness Fair:** GSDM has a long-standing program that enables women at Rosie's Place to receive oral health information and complimentary hygiene supplies. At this year's annual Rosie's Place Wellness Fair, faculty and student volunteers distributed toothbrushes and toothpaste and talked with those attending the fair about the importance of dental health, healthy eating, the consequences of tobacco use, and other health topics of interest.

- **Women to Women:** Two years ago, faculty and GSDM's student chapter of the American Association of Women Dentists launched Women to Women, a monthly community service initiative aimed at improving the oral health of the guests at Rosie's Place. The main goal is to improve the oral health of the women by providing screenings and educational information, and by answering any dental-related questions. Over the past 12 months, the students screened 122 women, and many more women stopped by for oral health information and/or oral hygiene supplies. An added bonus for the student volunteers has been getting to know some of the other groups volunteering at the monthly events and learning about their perspectives on oral health and overall health.

St. Agnes School Oral Health Education: Oral health education was provided to 20 children enrolled at St. Agnes School in Arlington. The children enjoyed a variety of interactive activities, including brushing the teeth of our popular dental puppet. Goody bags with oral hygiene supplies and parent handouts were given out at the end of the session.

St. Brendan School Oral Health Education: Oral health education was given for 120 pre-kindergarten and kin-

dergarten children attending St. Brendan School in Dorchester. Proper toothbrushing techniques were demonstrated and the importance of healthy eating discussed. The children were eager to talk about their dental experiences and brushing habits and happily received goody bags with oral hygiene materials and stickers.

Yawkey Club of Roxbury Dental Health Fair: GSDM's chapter of ASDA partnered with faculty and staff at the Yawkey Boys and Girls Club of Roxbury to host their annual interactive dental health fair. More than 100 children, ranging from elementary to high school age, attended the fair, which included dental "stations" focusing on various aspects of dental health: brushing and flossing, the negative effects of tobacco use on oral health, tooth protectors, the importance of regular dental visits, and the importance of healthy eating habits for good oral health. All who completed their "passport" to health, after visiting each station, received goody bag prizes at the end of the tour.

GSDM GOES TO SCHOOL

GSDM currently runs five citywide prevention programs and operates in 61 schools in Boston, Chelsea, Framingham, Natick, and Lawrence delivering preventive services to thousands of children, including oral health education, dental screenings, fluoride applications, and placement of sealants. During the 2012-2013 academic year, 15,442 children were provided oral health education; 5,008 received oral screenings and fluoride applications; and 3,158 dental sealants were placed for 1,041 children.

Chelsea Comprehensive School-Based Dental Program: For the 13th year, GSDM provided citywide comprehensive services in Chelsea, including classroom education, dental screenings, dental sealant placement, fluoride varnish applications, and restorative dental care for children enrolled in five public schools. Through partnerships with CAPIC Head Start and the Chelsea Family Network, services are also provided to many of Chelsea's preschoolers. This comprehensive oral health

program is included in the Agency for Healthcare Research and Quality's Health Care Innovations Exchange, a national program designed to support health care professionals in sharing and adopting innovations that improve the delivery of care to underserved patients.

During the 2012-2013 school year, this school-based program provided classroom oral health education to 2,815 Chelsea public school students in pre-kindergarten through grade four. Dental screenings and fluoride varnish treatments were provided to 1,273 students, and 126 dental sealants were placed for 43 first through fourth graders.

Since opening in April 2003, GSDM's Chelsea School Dental Center (CSDC) has been another anchor of the School's extensive commitment to Chelsea. The center has provided preventive and restorative services for thousands of children. Located in the Williams Middle School, the CSDC gives care to Chelsea public school students regardless of their grade level or ability to pay for services. Many of the patients, who range in age from preschoolers to high school seniors, have never been to the dentist and would have no other source of dental care if it were not for the CSDC. Five bilingual dentists devote time to treating patients in the clinic.

Framingham School Dental Program: GSDM operates a town-wide, school-based dental program for grade school children within all eight Framingham public elementary schools. During the 2012-2013 school year, oral health education was presented to 1,336 students in grades kindergarten through third grade. Additionally, 552 children received a dental screening and fluoride treatment. A total of 561 sealants were placed for 187 children.

Natick School Dental Program: GSDM runs a town-wide, school-based dental program for grade school children within all five of Natick's public elementary schools. During the 2012-2013 school year, this program delivered oral health education to 442 children, screened and gave fluoride varnish treatments to 114

youngsters, and placed 168 sealants on 47 children.

Lawrence School Dental Program:

GSDM reaches large numbers of children through this program, providing children in all 10 elementary schools and 2 middle schools in the City of Lawrence with oral health education, dental screenings, fluoride applications, and sealants. In total, oral health education was presented to 5,164 students, dental screenings and fluoride varnish applications were given for 1,476 students, and 1,011 sealants were placed on the teeth of 364 students.

Smart Smiles in Boston Public Schools:

During the 2012-2013 school year, GSDM provided education for 5,685 children; 1,593 students received dental screenings, cleanings, and fluoride varnish applications; and 1,292 sealants were provided to 400 children in 31 Boston public schools.

START THEM EARLY: PRESCHOOL ORAL HEALTH PROGRAMS

GSDM's community outreach includes providing screenings and/or oral health education to over 2,000 children in Boston-area preschools, day care centers, and Early Head Start and Head Start programs; oral health education to parents and guardians; and oral health education to preschool teachers, staff, and administrators.

Action for Boston Community Development (ABCD) Early Head Start and Head Start:

Faculty conducted Early Head Start oral health screenings, examinations, fluoride varnish, and referrals for 242 children enrolled in ABCD Early Head Start centers in Dorchester, East Boston, Roxbury, and the South End, as well as at Old Colony, Infants and Other People, Bradshaw Children's Learning Program, and Madison Park Technical Vocational High School in Boston. Additionally, oral health education was provided for 200 children enrolled at Dorchester Head Start and 160 children enrolled at South Boston Head Start. In addition, a faculty member gave an oral health presentation to the ABCD Central Health Advisory Committee.

Allston Brighton Area Planning Action

Council (APAC): Interactive classroom dental health education was conducted at an APAC child care center by GSDM faculty, and goody bags with toothbrushes, toothpaste, stickers, and other items were given to the children at the end of the session.

Ashmont Nursery School: Classroom dental education was provided to 27 preschool children enrolled at Ashmont Nursery School in Dorchester. The preschoolers enjoyed interactive activities, including brushing the teeth of our popular dental puppet, and goody bags were distributed at completion of the program.

Associated Early Care and Education:

Each year GSDM conducts an oral health program offering dental health education, oral screenings, and fluoride varnish applications to 470 children, as well as staff and parent training, at the Jamaica Plain, Sunnyside, Ruggles/Gilday, and Castle Square sites.

Chelsea Family Network:

GSDM provided oral health education and dental screenings for 37 children ages 3-5 years at Kangaroo's Pouch during the 2012-2013 school year. Dental education was provided for parents of enrolled children, helping to remind parents of the importance of initiating good oral health habits and routine dental care early in their children's lives. A faculty member serves each year as the health representative on the Family Network's Advisory Council.

Community Action Programs Inter-City (CAPIC) Head Start: Dental health education, screenings, and fluoride varnish applications were provided twice during the 2012-2013 school year for 265 Head Start children ages 3-5 years enrolled in the CAPIC Head Start (Chelsea, Revere, Winthrop) Program. At the Irene O'Connell Center Open House in Revere, GSDM faculty and staff talked with parents about the Chelsea School Dental Program; parent presentations also explained the oral health promotion activities offered through the program and the availability of resources offered to all Chelsea Head Start and public

school children at the Chelsea School Dental Center. A GSDM representative is an active member of the CAPIC Head Start Health Advisory Committee.

Crispus Attucks Children's Center:

Dental screenings and oral health education were offered to 230 children enrolled in Crispus Attucks Children's Center in Dorchester, which serves children between the ages of 6 weeks and 6 years.

Framingham South Middlesex Opportunity Council (SMOC) Head Start:

As a part of the Framingham School Dental Program, 170 preschool age children were provided oral health education, and 86 children received dental screenings and fluoride treatments. Two oral health information sessions were presented to SMOC staff and parents of enrolled children, providing an opportunity to educate both staff and parents about oral health and to increase parents' awareness of the many community services available to them in the Framingham area.

Greater Lawrence Community Child Care Center: Oral health education, dental screenings, and fluoride varnish applications were provided to 150 preschool children enrolled at the Greater Lawrence Community Child Care Center.

Horizons for Homeless Children: Oral health education, dental screenings, and fluoride varnish treatments were offered to 76 children ages 6 weeks to 6 years enrolled at Horizons for Homeless Children in Dorchester.

Step Forward Learning Center: Oral health education was provided to 40 children ages 3-5 years, and 12 children received dental screenings and fluoride varnish applications at this Framingham-based day care program.

Temple Emeth Nursery School: Oral health education was provided to 30 children ages 3-5 attending the Temple Emeth Nursery School in Chestnut Hill. The children enjoyed interactive activities, including a toothbrushing lesson with our popular dental puppet; goody bags with oral hygiene supplies and stickers were given out at the end of the session. ■



Throughout April 2013 Boston University students, faculty, staff, alumni, and their families and friends participated in Global Days of Service, an initiative offering service opportunities to BU friends worldwide. At GSDM, Global and Population Health and Alumni Relations offered several volunteer opportunities designed specifically for our Henry M. Goldman School of Dental Medicine family.

CLOTHING (AND MORE) DRIVES

Each week in April, Global & Population Health organized collections for local organizations, including Cradles to Crayons (April 1-5), the Salvation Army and Orchard Gardens School (April 8-12), the Greater Boston Food Bank (GBFB) (April 15-19), and Rosie's Place and Pine Street Inn (April 22-26). A total of approximately 560 items were collected.

For Cradles to Crayons, GSDM volunteers collected clothes and shoes for children newborn to age 12.

For the Salvation Army, volunteers collected back-to-school supplies, including backpacks, markers, crayons, notebooks, lined paper, construction paper, pencils, pens, and rulers. For Orchard Gardens School, where GSDM often runs community health programs, volunteers collected soccer supplies for elementary and middle school children: cleats, shin pads, shorts, shirts, and new mouth guards and socks.

On week three, the volunteers collected non-perishable food items for the GBFB.

On week four, Rosie's Place and Pine Street Inn received toiletries, new socks, and reading glasses.

"I am so pleased to see our School continue its 50-year tradition of service," said Dean Jeffrey W. Hutter. "The Global Days of Service volunteer opportunities were a great way to get together as a team and make a positive impact on our community."

—Dean Jeffrey W. Hutter

ROSIE'S PLACE, BOSTON

On Tuesday, April 2, both pre- and post-doctoral students volunteered to serve food at Rosie's Place, a sanctuary for homeless, displaced, and battered women in Boston's South End.

Post-doctoral students in the Dental Public Health program served lunch. Pre-doctoral students, members of the BU student chapter of American Association of Women Dentists, volunteered to serve dinner.

Volunteers around town: (opposite page) Cindy Cadoret, Kathy Lituri, and students at the Food Project in Lincoln, (this page, clockwise from left) Kathy Held and Sharon Boyle at the Greater Boston Food Bank, stretching before the Relay for Life, the team tee, Joseph Calabrese and Keely Matheson practice putting at Relay for Life, students who served food at Rosie's Place



THE FOOD PROJECT, LINCOLN

Volunteers convened at the Food Project in Lincoln on the morning of Saturday, April 6, to get the fields ready for the planting season. Since 1991, the Food Project has built a national model of engaging young people in personal and social change through sustainable agriculture. Each year, more than 150 teenagers and thousands of volunteers farm 40 acres in four eastern Massachusetts towns and cities. Food from the farms is distributed through their community-supported agriculture programs and farmers markets, and donated to local hunger relief organizations.

"We spread mulch between the blackberry bushes, weed the raspberry bushes, and exposed 2,500 garlic plants by removing straw that had covered them for the winter," said GSDM Oral Health Promotion Director Kathy Lituri.

The goal was to make a difference for those in the greater Boston area who lack healthy, affordable food.

THE GREATER BOSTON FOOD BANK

On the morning of Tuesday, April 9, GSDM staff and faculty met at the Greater Boston Food Bank (GBFB), where they received a customized educational and team-building experience. They sorted, packed, and inspected food and groceries for people in need. GBFB is the largest hunger relief organization in New England and among the largest food banks in the United States. Last year, it distributed almost 41 million pounds of food, enough to provide healthy meals to as many as 545,000 people. The organization is committed to increas-

ing its food distribution in 2013 to provide at least one meal per day to every person in need in eastern Massachusetts.

BU RELAY FOR LIFE

BU's Relay for Life at the Track and Tennis Center on the Charles River Campus began at 6 p.m. on Saturday, April 13, and didn't end until 6 a.m. the next morning. For the fifth year, GSDM participated in the overnight event, in which participants walk the track to honor cancer survivors, remember people who died of cancer, and raise money for the American Cancer Society. Together, the three GSDM teams raised more than \$1,700!

CRADLES TO CRAYONS, BRIGHTON

Members of the School's Hispanic Student Dental Association (HSDA) led two volunteer sessions at Cradles to Crayons in Brighton on Wednesday, April 17. Voted best local charity by Boston A-List in 2012, the organization provides children from birth through age 12 living in homeless or low-income situations with the essential items they need to thrive, free of charge.

"We were all so impressed with the whole Cradles to Crayons operation," says HSDA organizer Fransheska Ovalles, "from the enormous, yet well-organized, warehouse filled with donations to the warm people who keep it going. It was amazing to be a part of this event. HSDA will make this another one of its annual community service traditions."

Several people volunteered on their own at the First Parish Church, Strong Women Strong Girls in Boston, and Belle of the Ball. ■

THANKS!

GLOBAL DAYS OF SERVICE 2013 VOLUNTEERS

Yasmin Alayyoubi CAS 10, DMD 14
 Dalal Alhajji CAS 10, DMD 14
 Ingy Alhelawe DMD 15
 Coordinator, School-based Programs
 Flor Amaya
 Chris Atchinson
 Solafa Ayoub DScD 15
 Nicholas Baldelli DMD 13
 Clinical Instructor Lina Benslimane
 Danielle Berkowitz DMD 13
 Christopher Bickford DMD 13
 Administrative Manager Sharon Boyle
 Andy Brito DMD 13
 Kathleen Burnside DMD 14
 Jobina Cabrea
 Clinical Instructor Cindy Cadoret
 Joe Calabrese
 Assistant Dean of Students
 Joseph Calabrese
 Michelle Calabrese
 Tommy Calabrese
 Clinical Instructor Gladys Carrasco
 Sean Cater
 Wanda Cox
 Assistant Professor Corinna Culler
 Shelby Curtis DMD 16
 Nadia Daljeet DMD 13
 Michelle DaRocha
 Clinical Instructor Dee Devlin
 Michael Donovan DMD 13
 Rebecca Dorfman
 Tarek Elmajie CAGS 14, MScD 14
 Osama Felemban MScD 12, DScD 13
 Danielle Fernandez DMD 14
 Research Project Assistant
 Krystal Garcia
 Kelsey George DMD 16
 Dental Health Educator Krissie Gibbs
 Johnny Gonzalez DMD 15
 Grace Hannawi SAR 13
 Wendy Heinstein
 Assistant Professor Kathy Held
 Debora Heller PERIO 16

Professor and Associate Dean for
 Global & Population Health
 Michelle Henshaw
 Dean Jeffrey W. Hutter
 Kathleen Hutter
 Marian Ibarra DMD 13
 Homan Javaheri DMD 14
 Usman Javed DMD 13
 Delphine Jeong
 Roli Malla Joshi
 Zaina Kalthoum DScD 15
 Rabinder Kaur AS 13
 Professor Elizabeth Kaye
 Clinical Instructor Ana Keohane
 Professor Tom Kilgore
 Mia Kim
 Francis Kniskey
 Sirisha Kovvali DMD 14
 Andrea Lam DMD 16
 Research Project Assistant
 Ramona Lara
 Emma Lattouf
 Lana Le
 Luri Lee CAS 12, DMD 16
 Stephanie Leung DMD 15
 Michelle Li DMD 14
 Linda Linsinbigler DMD 15
 Oral Health Promotion Director
 Kathy Lituri
 Jenny Lorenzo DMD 13
 Rachel Lukaş DMD 13
 Antonio Maceda-Johnson DMD 15
 Matt Mara DMD 16
 Asween Marco SPH 12
 Keely Matheson DMD 15
 Mary McClintock DMD 16
 Kelley McLaughlin DMD 14
 Director of Alumni Relations &
 Annual Giving Stacey McNamee
 Richa Mehta DMD 14
 Hector Mendoza
 Rachel Meshell
 Jessica Metcalfe DMD 15

Champaka Nagaraju DMD 14
 Nora Nakshabendi DMD 16
 Michael Navy DMD 16
 Zara Nensey DMD 14
 Tam Nguyen DMD 13
 Program Administrator Sheree Norquist
 Maidelys Oliva DMD 14
 Fransheska Ovalles DMD 13
 Martin Pantages
 Jay Patel DMD 14
 Khamir Patel AS 14
 John Paul DMD 14
 Thomas Pepe DMD 16
 Carina Pina
 Chelsea Randall DMD 13
 Caitlin Reddy DMD 13
 Daniella Rizzo DMD 16
 Kenia Rodriguez DMD 14
 Ramandeep Samra DMD 15
 Amrita Sandhu DMD 15
 Fernando San Juan DMD 14
 Clinical Assistant Professor
 Frank Schiano
 Instructor Thayer Scott
 Neelam Shah DMD 14
 Muhammad Ali Shazib DMD 14
 Hajra Sheikh AS 14
 Sara Sheikh AS 14
 Jesse Singh
 Associate Professor and Director of the
 Advanced Specialty Education
 Program in Dental Health
 Woosung Sohn
 Andrew Soule-Hinds DMD 15
 Jackie St. Pierre DMD 14
 Wyatt Traina DMD 14
 Swathi Uppu DMD 14
 Clinical Assistant Professor
 Tina Valades
 Karina Vergara DMD 14
 Jaspreet Warring DMD 14
 Amanda Yip DMD 16
 Joey Yu



**AEGD reception
reunites alums
in Boston**

SEE STORY PAGE 42

(left) Clinical Instructor
Carmen Garcia SPH 08,
AEGD 10

Dr. Janket's surprising findings • Alum wins Frechette Award • "Quintessence" • Our 50th Anniversary



Message From Alumni Board President Mitch Sabbagh

DEAR FELLOW ALUMNI,

This is an exciting time at the Boston University Henry M. Goldman School of Dental Medicine (GSDM) as a new era in dental education is currently being implemented.

Our School is currently moving to a group practice model that reflects the changing dynamic not only in dental education, but in dental practice. Current and future students will be part of a group practice where a small group will work together to formulate diagnoses and treatment plans for patients and then treat their patients under the supervision and guidance of our clinical faculty. A clinical faculty that is immensely experienced and accomplished in private practice, research, and education. It is the rare occurrence that a new graduate, even after a residency or specialty program, opens a practice on their own, "puts up their shingle," and success is then guaranteed. In these uncertain economic times of rising costs to students and practitioners alike, an association with an existing practice or community health facility is the usual starting point of one's career. That practically guarantees one will be part of a group practice of some sort. Even if one's aspirations are to be a solo practitioner as I have been at one point or another, you are still part of a group that consists of not only your staff, but the specialists you refer to, the laboratories you employ and even your dental supply representative.

As our School continues to celebrate our 50th anniversary this year, the faculty and administration, under the visionary leadership of Dean Jeffrey W. Hutter is embarking on an ambitious

and revolutionary change in the clinical curriculum that will proactively prepare our graduates to succeed for the future they will master. Students will be grouped and assigned to each other to deliver care for their patients from the diagnostic stage to treatment planning to clinical care. They will work as teams being able to correlate ideas from all the diagnostic information presented as they synthesize and implement an appropriate treatment plan based on all the factors the patient presents. They will have not only an ethical and moral responsibility to their patient but they will develop accountability to each other.

GSDM has always been an institution of camaraderie, friendship, and collegiality. Some of our strongest professional and personal relationships began here and continue to this day to add to the notion that we all practice as a group in one way or the other.

As alumni we must continue to support our School with the many resources we have that came as a result of our time here. Our philanthropy, our time, and our practices can be part of our contributions that will ensure the educational legacy evolving before our very eyes. ■

Sincerely,

A handwritten signature in black ink, appearing to read "Mitch Sabbagh".

Mitchell V. Sabbagh DMD 87
President, Boston University Henry M. Goldman
School of Dental Medicine Alumni Association

←
"The School is embarking on an ambitious and revolutionary change in the clinical curriculum that will proactively prepare our graduates to succeed for the future they will master."

—Mitch V. Sabbagh DMD 87

WHEN IT COMES TO TEETH AND HEART HEALTH, QUALITY, NOT QUANTITY, COUNTS

Previous studies have shown that having more remaining teeth in the mouth is correlated with a longer life. In Dr. Sok-Ja Janket's recent study, published in the *Journal of Dentistry*, the researchers asked the question: What effects then, do dental prostheses have on health, specifically cardiovascular health? This is among the first studies to suggest a potential causal relationship between oral and cardiac health.

Researchers used baseline data from the Kuopio Oral Health and Heart study started in 1995-1996 and appended mortality data during the next 15 years to create a longitudinal study.

The researchers compared the cardiovascular survival among four groups divided according to various combinations of natural, fixed, or removable prosthetic dentitions. The results were surprising. They found that the group with both natural teeth and partial dentures had a lower risk of CVD mortality than the group with all natural teeth. The group with partial and full dentures had a higher risk of CVD mortality than those who had full dentures only or with very few opposing natural teeth.

In short, they found that it's not just quantity of teeth, but quality that results in better cardiac survival.

"Having many teeth is only a part of the story," says Dr. Janket. "One must also keep them well-maintained to receive the full benefits."

The article was published online June 11, 2013. Additional authors include Dr. Markku Surakka, Kuopio University Hospital, Kuopio, Finland; Ms. Lynda M. Rose, Brigham & Women's Hospital; Dr. Angus W.G. Walls, Edinburgh Dental Institute; Dr. J.H. Meurman, Helsinki University Central Hospital/University of Helsinki; and Drs. Judith Jones and Ronni Schnell and Andrea Lam DMD 14 from GSDM. ■

(l-r) Authors Andrea Lam DMD 14, Dr. Sok-Ja Janket, and Dr. Ronni Schnell



ALUMNI GATHER IN ANAHEIM AFTER THE CALIFORNIA DENTAL ASSOCIATION MEETING FOR 50TH ANNIVERSARY CELEBRATION

On April 11, 2013, the Boston University Henry M. Goldman School of Dental Medicine (GSDM) hosted an alumni reception at the Hilton Hotel in Anaheim, California, as part of the School's 50th Anniversary Celebration. The reception followed the California Dental Association Meeting, which was themed, "The Art and Science of Dentistry."

50th Anniversary Planning Committee Chair Dr. Tom Kilgore represented Dean Jeffrey W. Hutter at the gathering of GSDM alumni, staff, faculty, family, and friends. He said, "It was great to see a nice mix of recent graduates and also more senior alumni from the Henry Goldman era. I felt a great enthusiasm for celebrating the 50th from both DMD and post-doctoral alumni." Kilgore also thanked Director of Development Ms. Kimberley

Miller, who was attending and instrumental in organizing the event.

Dean Hutter added, "I am grateful to Dr. Kilgore, Ms. Miller, and all of our alumni who attended the event for continuing the celebration of our 50th Anniversary in my absence." Kilgore closed the evening by presenting a video that was produced specifically for the 50th Anniversary Celebration commemorating the past 50 years and highlighting what lies ahead for the School. ■



(l-r) Dr. & Mrs. Alan Young DMD 79, David Dann DMD 91, Jim Kloss DMD 69, Dr. Thomas Kilgore, Anu Rajasekarian DMD 07, Adam Persky DMD 90, Rafaeala Szpoganicz DMD 07, and Director of Development Kimberley Miller

STEVE PERLMAN PEDO 76 RECEIVES CROCKER AWARD



DDS Commissioner Elin Howe, Dr. Perlman, and President and CEO of Cardinal Cushing Centers Jo Ann Simon, who nominated Dr. Perlman for the award

Dr. Steve Perlman PEDO 76 was awarded the 2013 Allen Crocker, MD Health Services Award at the Department of Developmental Services (DDS) and the DDS Statewide Advisory Council Annual State House Celebration. The award is presented annually to an individual or organization that mirrors the life of Dr. Crocker and his respect for and value of individuals with a disability.

In a career that spanned more than six decades, Dr. Crocker, a Harvard Medical School pediatrician, re-conceptualized the doctor/family dialogue regarding family life with a child with Down Syndrome. He mentored scores of physicians and impacted the education of generations of pediatricians and other professionals through the publication of definitive medical textbooks on caring for individuals with Intellectual/Developmental Disabilities.

In presenting the award, DDS Commissioner Elin Howe said, "Dr. Perlman personifies the exceptional qualities of the individual in whose name this award is given—that is a passion for offering quality care, a deep and abiding belief in the value of every individual with a disability, and an unconditional commitment to improving the

quality of life for individuals with intellectual disability."

In accepting the award, Dr. Perlman told the audience of legislators, policy-makers, and disability advocates, "Let us continue to fight to end the disparities in health care for persons with intellectual disabilities, their difficulties in accessing care, the lack of education of health care providers and the end of the use of the "R" word. To quote Dr. Crocker's favorite quote, "I hope to leave the campsite better than when I found it." ■

HONORS & CELEBRATION AT AAE ANNUAL SESSION

Boston University Henry M. Goldman School of Dental Medicine (GSDM) residents and alumni were a strong presence at the American Association of Endodontists (AAE) Annual Session, held April 17–20, 2013, in Honolulu.

The following GSDM Endodontics residents made presentations at the AAE Annual Session: Mohamed Jamal Ahmed DScD 16; Obadah Attar DScD 13; Mohammed Alshahrani DScD 15; Philippe Gauthier MSD/CAGS 13; Haytham Jaha DScD 15; and Manal Saadoun MSD 14. Also attending were GSDM residents Mona Alsulaiman DScD 13, Grant Hutchens CAGS 13, Jennifer Kim CAGS 14, and Eugenia Yang CAGS 14.

Dr. Philippe Gauthier was one of ten winners of the AAE DENTSPLY 2013 Oral Research Presentation award. Every year, the top ten presentations in three categories are each awarded \$1,000.

Also at the AAE Annual Session, Dean Jeffrey W. Hutter recognized Paul Bianchi ENDO 00 for having fulfilled all of the requirements to become a Board Certified specialist in the field of Endodontics by "pinning" on his American Board of Endodontics (ABE) Diplomate pin at the Louis I. Grossman ABE College of Diplomates Breakfast.

To celebrate the 50th Anniversary of GSDM's founding, Dean and Mrs. Jeffrey W. Hutter together with Dr. and Mrs. Sami

Chogle hosted a reception on April 18 at the Hilton Hawaiian Village. Approximately 100 GSDM alumni, students, faculty, staff, and friends attended the celebration. Dean Hutter updated the attendees on some of the important and exciting initiatives that are ongoing at the School, thanking them for their support, and closed by saying:

"It is truly an honor and a privilege for me to serve as the Dean of our Henry M. Goldman School of Dental Medicine and I look forward to working with each and every one of you as we go forward in our Fundraising Campaign, and in so doing, realizing together our vision for the Boston University Henry M. Goldman School of Dental Medicine to be the premier Center of Excellence in Oral Health Education, Research, and Patient Care in the world."

At the AAE General Assembly on April 19, Director of the Advanced Specialty Education Program in Endodontics Dr. Sami Chogle and Dr. Brian Chuang accepted an award for hosting the 2012 Advanced Programs in Clinical Endodontics Symposium (APICES) meeting at GSDM. APICES was founded in 2003 by then GSDM residents Brian Chuang DMD 02, ENDO 05 and Jessica Barr ENDO 05 as a nonprofit activity dedicated to providing an educational and social environment specifically for endodontic residents. The event is held annually by one of a rotation of host institutions.

Altogether, the 2013 AAE Annual Session was an event full of honors and celebration for Boston University Henry M. Goldman School of Dental Medicine. ■

(l-r) Dean Jeffrey W. Hutter, Philippe Gauthier ENDO 13, and Dr. Sami Chogle



AEGD and PGOE Alumni Gather for Annual Reunion

*Dr. John Cassis,
Steven Shapiro
AEGD 08, and
Rosario Alvarez
AEGD 93*



"There was a great energy that filled the room that night and we were very happy to hear how successful our alumni have been in their fields."

—Dr. John Cassis

On Thursday, May 30, 2013, GSDM held our eighth annual Advanced Education in General Dentistry (AEGD) and Post Graduate Operative and Esthetic Program (PGOE) alumni reunion dinner in the Metcalf Trustee Ballroom. Dr. John Cassis, director of the AEGD and PGOE programs, hosted the event.

The reunion featured both a continuing education lecture and a social networking event for alumni. Guests met and chatted at the cocktail hour, then the 115 attendees enjoyed a dinner featuring guest speaker Dr. Allen Ali Nasseh DDS, MMSc. Dr. Nasseh maintains a private endodontic practice in Boston and holds a staff position in the post-doctoral endodontic program at Harvard University School of Dental Medicine. The topic of his speech was, "The Clinical Application of Bioceramic Sealer and Root Repair Material in Endodontics."

Dean Jeffrey W. Hutter welcomed the AEGD alumni and acknowledged Dr. Cassis; Dr. Dan Nathanson, Chair of the Department of Restorative Sciences & Biomaterials; and AEGD alumni, residents and faculty.

"I was very pleased with the alumni attendance at the eighth annual Advanced Education in General Dentistry and Post Graduate Operative and Esthetic Dentistry Alumni dinner," said Dr. Cassis. He continued, "There was a great energy that filled the room that night and we were very happy to hear how successful our alumni have been in their fields. We are glad they return each year to our special event, and are especially impressed by this year's record attendance. This is a great stimulus to the School administration and encourages our faculty and staff to continue to do the job they do with the residents each year." ■

T. JAMES LEE DMD 08 RECEIVES PRESTIGIOUS FRECHETTE AWARD

At the March 2013 General Session & Exhibition of the International Association for Dental Research (IADR) in Seattle, Washington, Dr. Tsung-Lin James Lee DMD 08 received the prestigious Arthur R. Frechette Award for best research in clinical Prosthodontics for his paper, "Compositional Analysis on Mechanical Properties and Biocompatibility of Titanium-Zirconium Alloy," which he presented at the Session.

The Arthur R. Frechette Research Awards in Prosthodontics is an annual research competition for new investigators sponsored by the Prosthodontics Research Group of the International Association for Dental Research. It is the premier annual award given in the prosthodontics research group. For 2013, a record total of 34 abstracts were submitted in two categories: Biological Sciences and Tissue Engineering (10 abstracts), and Materials Science or Bioengineering oriented protocol (24 abstracts).

Dr. Lee was the winner in the Materials Science/Bioengineering category. Dr. Lee conducted his research together with colleagues at the Graduate School of Medical and Dental Sciences, Tokyo Medical & Dental University, Tokyo, Japan.

During a ceremony at the IADR General Session, President of the IADR Prosthodontics Research Group and Chair of Restorative Sciences & Biomaterials Dr. Dan Nathanson presented Dr. T.J. Lee with the IADR Arthur R. Frechette winner's plaque and monetary prize of \$1,000.

Said Dr. Nathanson, "I was so impressed with the quality of Dr. Lee's research and happy to have a BU alum voted as winner by the judges in the competition."

Dean Jeffrey W. Hutter said, "On behalf of the entire Boston University Henry M. Goldman School of Dental Medicine community, congratulations to Dr. Lee on receiving the Arthur R. Frechette Award in

Prosthodontics. I am proud to see a member of our alumni family supporting the School's mission to shape the future of the dental profession through scholarship and creating and disseminating new knowledge." ■

AADR BOSTON SECTION SEMI-ANNUAL MEETING

On Thursday, April 25, 2013, the American Association for Dental Research (AADR) Boston Section held its Semiannual Meeting at the Forsyth Institute in Cambridge.

Boston University Henry M. Goldman School of Dental Medicine (GSDM) was represented strongly in the Boston Section by representatives Dr. Robert Gyurko (President), Corinna Culler (Secretary), and Dr. Mary Tavares (Alternate Councilor). GSDM students Layeeq Ahmed AS 13, Suha Al Judaibi PERIO & ORAL BIO 15, Debora Heller PERIO 16, Adriana Valery Lara PERIO & ORAL BIO 15, Na Tian ORAL BIO 14, and Mariana Velazquez OMFS 14 (with research guidance from Drs. Eva Helmerhorst, Frank Oppenheim, Andrew Salama, Erdjan Salih, and Guoxian Wei) did poster presentations, and Na Tian gave an oral presentation.

The evening began with a business meeting, followed by a keynote lecture from Ricardo P. Teles of the Forsyth Institute and Harvard School of Dental Medicine titled, "Biomarkers of Periodontal Disease Progression." After the lecture, the students gave their oral and poster presentations. The meeting ended with a reception.

Roughly 70 people attended the meeting, with 19 of those from GSDM. Among the School attendees were Dr. Leslie Will, Anthony A. Gianelly Professor and Chair, Department of Orthodontics & Dentofacial Orthopedics and Director of the Advanced Specialty Education Program in Orthodontics & Dentofacial Orthopedics; Dr. Robert Gyurko, Associate Professor, Department of Periodontology & Oral Biology; and Corinna Culler, Assistant Professor and Director of School-based Programs.

*Dr. Alpdogan Kantarci,
Dr. Leslie Will, Najla
Alrejaye ORTHO 16,
Corinna Culler, and
Dr. Robert Gyurko*



"The goal of these meetings is to bring together Boston area dental researchers twice a year for social and scientific interactions and to foster collaborations," said Dr. Gyurko. "The Boston Section is the largest among all local sections of the AADR, giving us a unique opportunity to work together and also to make our voices heard on the national level."

ORAL SURGERY ALUMNI RETURN TO CAMPUS

The Advanced Specialty Education Program in Oral & Maxillofacial Surgery (OMFS) celebrated Donald F. Booth Education Day & Return to Residency on Wednesday, April 10, 2013. This was the fifth annual "Return to Residency Day," which honors Department Chair Emeritus Dr. Booth.

Attendance hit a new record this year, totaling approximately 70 guests. Chair of Oral and Maxillofacial Surgery at Loma Linda University and Director of the American Board of Oral and Maxillofacial Surgery Dr. Alan Herford was the day's speaker.

GSDM Chair of Oral & Maxillofacial Surgery Dr. Pushkar Mehra presented a departmental report and Dean Jeffrey W. Hutter updated guests on significant achievements at the School, including our successful Accreditation Site Visit, space planning, and the 50th Anniversary celebration. "Thank you all for being here today for this excellent educational conference," he said, "and allowing me to update you on some of the important and exciting initiatives that are ongoing at our School. I appreciate all of your support."

Dr. Herford presented several talks throughout the morning and afternoon on the topics of, "Current Concepts in Treating Facial Trauma including Hard and Soft Tissue Reconstruction" and "Grafting Options for Jaw Defects: Contemporary Concepts."

"Dr. Herford gave a great talk that was received well by everyone," said Dr. Mehra. "It was nice to meet many alumni and friends; some of the BU/BCH alumni dating back to the 1960s and as recently as 2012 attended the event."

Guests received five continuing education credits and also reconnected with old friends and supported the Alumni Association by attending. ■

PHILLY WELCOMES ORTHO ALUMNI

On May 5, 2013, Dean & Mrs. Jeffrey W. Hutter along with Anthony A. Gianelly Professor and Chair of Orthodontics & Dentofacial Orthopedics Dr. Leslie Will and the Department of Orthodontics & Dentofacial Orthopedics hosted an alumni reception and 50th Anniversary celebration at the Ritz-Carlton Philadelphia during the American Association of Orthodontists annual meeting.

In attendance with the hosts were: former Director of the Post-doctoral Orthodontic Patient Treatment Center Dr. Mohamed Masoud, Assistant Dean for Development & Alumni Relations Kevin Holland, and many GSDM orthodontic residents, faculty, and alumni. Drs. Fred Sacramone and Negaar Sagafi spoke on behalf of the Orthodontic Alumni Association.

Dean Hutter briefed the guests on events happening at Boston University and the School, particularly BU's One Billion Dollar Campaign, which will be critical in realizing the School as the premier Center of Excellence in Oral Health Education, Research, and Patient Care.

Dean Hutter also shared plans for celebrating the second half of the School's 50th

anniversary year. Upon introducing a commemorative video, Dean Hutter said, "This is a very special moment for our School. I know each of you will join me in seizing this moment. Together, we can build on the momentum of a legacy of innovation and fund our proposed new facility and build a future that is truly great." ■

ALUMNI REUNITE IN ORLANDO FOR 50TH ANNIVERSARY CELEBRATION

On May 25, 2013, Dean Jeffrey W. Hutter and (now former) Professor and Chair of the Department of Pediatric Dentistry Dr. Christopher Hughes hosted a special Boston University Henry M. Goldman School of Dental Medicine (GSDM) reception at the Walt Disney World Swan and Dolphin Resort in Orlando, Florida, during the American Academy of Pediatric Dentistry (AAPD) 66th Annual Session. GSDM alumni, faculty, staff, family, and friends reunited in a celebration of the 50th Anniversary of the School's founding.

Dean Hutter addressed the guests, thanking Dr. Hughes for his service to the School and Dr. Wendy Cheney for the outstanding job she is doing as the Director of the Advanced Specialty Education Program in Pediatric Dentistry. ■



(l-r) Enrique Muller DMD 07, PERIO 12; Dean Jeffrey W. Hutter; Ernesto M. Muller PERIO 61; and Dr. John Ictech-Cassis

ALUMNI TREAT NEW POST-DOCS TO LUNCH

The Boston University Henry M. Goldman School of Dental Medicine Alumni Association sponsored a lunch for entering post-doctoral advanced education students/residents Wednesday, July 3, 2013, during their weeklong orientation.

During the hourlong lunch, new residents met and had the chance to speak with Assistant Dean of Students Joseph Calabrese and members of Development & Alumni Relations, including Assistant Dean for Development & Alumni Relations Kevin Holland, Director of Alumni Relations & Annual Giving Stacey McNamee, and Director of Development Kimberley Miller.

Following lunch, residents began Ethical Fitness Training with Assistant Dean for Admissions Ms. Catherine Sarkis. ■

PERIO AND PROS ALUMNI GATHER FOR "QUINTESSENCE" RECEPTION

On Wednesday, June 5, 2013, the Boston University Henry M. Goldman School of Dental Medicine (GSDM) held an alumni reception hosted by Dean Jeffrey W. Hutter and Chair of Periodontology Dr. Serge Dibart on the eve of the International Symposium on Periodontics & Restorative Dentistry, "Quintessence." Around 80 guests gathered for a cocktail reception in the Metcalf Trustee Ballroom that evening.

"The evening reception was very well attended by GSDM alumni from the U.S. and abroad," said Dr. Dibart. "A considerable contingent from Italy was present."

Dean Jeffrey W. Hutter welcomed the guests and presented updates on GSDM news. ■

Turn the page for more 50th Anniversary photos.



Our 50th Anniversary

Anniversary Celebrations Around the Globe

Alumni, faculty, students, and staff celebrated GSDM's 50th Anniversary throughout 2013 at receptions around the US and the world.



Past President, BU Alumni Council, and Alumni and Dean's Advisory Boards member **Shadi Daher DMD 90, OMFS 94**; BU Provost **Jean Morrison**; and Dean **Jeffrey W. Hutter** at the 50th Kickoff at Yankee Dental Congress on February 1



Director of Alumni Relations & Annual Giving **Stacey McNamee** and Dean's Advisory Board Member **Bobby Virk ORTHO 06** at the ADEA reception in Seattle in March



Dean **Jeffrey W. Hutter**; **Ariel Trujillo DMD 97, PERIO 00**; and his wife **Alissa** at an alumni reception hosted by the Trujillos in Scottsdale in March



Dr. Shahin Etemadi (left) and Director, Advanced Specialty Education Program in Endodontics, **Dr. Sami Chogle** at the AAE reception in Honolulu in April. Dr. Etemadi is a former student of Dr. Chogle and received his board certification pin on this day.



Former Chair of Oral & Maxillofacial Surgery (OMFS) **Dr. Donald Booth**, Dean **Jeffrey W. Hutter**, and current Chair of OMFS **Dr. Pushkar Mehra** at Donald F. Booth Education Day & Return to Residency Program at GSDM in April



Director, Advanced Education in General Dentistry (AEGD) and Post-graduate Operative & Esthetic Dentistry **Dr. John Cassis** and **Sheede Khalil DMD 12, AEGD 13** at the AEGD Alumni Reception in Boston in May



Dean **Jeffrey W. Hutter** with **Drs. Ossama and Sana Al-Lahham** at the AAO reception in Philadelphia in May



Alumni Board Member Josephine Pandolfo CAS 74, DMD 79, PERIO 82; Alumni Board Secretary Frank Schiano CAS 01, DMD 06, AEGD 07; and Director of Alumni Relations & Annual Giving Stacey McNamee at the International Symposium on Periodontics & Restorative Dentistry (Quintessence) in Boston in June



Former Chair of Pediatric Dentistry Dr. Christopher Hughes; Willie Chao PEDO 08 with his wife and children; and Dean Jeffrey W. Hutter at the AAPD reception in Orlando in May



Gabriel Blumenkranz; Louis Garcia; Alumni Board and Dean's Advisory Board member Shadi Daher DMD 90, OMFS 94; Deans Advisory Board member Ernesto Muller PERIO 61; and Enrique Muller DMD 07, PERIO 12 at Quintessence in Boston in June



Alumni reception in Bangkok: (clockwise from near right) Sonthi Sirmai PROS 97 and Dean Jeffrey W. Hutter; GSDM alumni who attended the reception; Dr. Laisheng Chou addressing guests



class notes



Park and Chang

Beom (Mike) Park PROS 14 ended a recent school presentation in room G-718 with a marriage proposal to girlfriend **ChiungYun Chang PERIO 13**.

D. Cameron Braasch DMD 09 and wife, former GSDM Alumni Coordinator Michelle (Clemente), welcomed Grant Alden at 9:58 a.m. on July 21, 2013. He weighed 6 lbs., 15 oz. and measured 20 inches.



Grant Alden Braasch

Peter Elton DMD 08 launched a practice in Gig Harbor, Washington. Previously, Elton served in the US Army Dental Corps and as a dental associate in private practice with Puyallup Valley Dental Care.

Dario E. Gonzalez Arria DMD 07, PERIO 03 became a Diplomate of the American Academy of Periodontology.

Greg Pezza DMD 03, AEGD 04, ORTHO 08 and **Joseph Pezza ORTHO 73** won a 2013 Best of Cranston Award for Pezza Orthodontics in Cranston, Rhode Island.

Mark Desrosiers ENDO 06, who practices in West Hartford and Glastonbury, was installed as president of the Connecticut State Dental Association (CSDA) on Wednesday, May 8, during the CSDA House of Delegates at Mohegan Sun Resort and Casino.

"I am thrilled to serve as the head of an organization that I have grown to admire and respect for its commitment to improving the oral health of the people of Connecticut," said Dr. Desrosiers.

Dr. Desrosiers is involved in legislative and political activities serving as an Action Team Leader, Connecticut Dental Political Action Committee Chair, American Association of Endodontists Government Affairs Chair, and member of the American Dental Political Action Committee board. He volunteers as a Clinical Instructor at GSDM and with the Boy Scouts.

Amrita Reddy DMD 03, owner and operator of four Aspen Dental practices in New Hampshire, was featured on the Nashua Patch website in the article "Dental Practice Makes Perfect Career Path for 'Momtrepreneur'."

James J. Wu OMFS 97, accompanied by his children **Elaine CAS 15** and **Christine SAR 17**, provided oral health services to 300 children in 3 orphanages with Little Samaritan Mission in Moldova, May 25-June 1. Says Wu, "Next year, it will be our son Aaron's turn to go with me."

The practice of **Basel Badawi DMD 94**, CITIDental, is now on Facebook and Twitter. "The launch of Facebook and Twitter has allowed our practice to take a giant step toward better patient communication. We are now able to interact more closely with our patients outside of the office than ever before," said Badawi.

Walter Sustek Jr. DMD 78 is lead dentist at the new Aspen Dental practice in Anderson, South Carolina, which opened May 23, 2013.

In Memoriam

Joan K. Forrest DMD 78 died on August 6, 2013, after a courageous battle with breast cancer. Dr. Forrest was born in 1952 to George and Rhoda Forrest of Glens Falls, New York. After graduating from University of Pennsylvania she received her dental degree from GSDM. She practiced dentistry in San Diego for over 30 years and was a long-time violinist in the La Jolla Symphony Orchestra. Joan is described as bright, charming, enthusiastic, and embracing of life. She was deeply committed to family and friends, who are inspired by her vibrant spirit. She is survived by her husband Michael Latz, sons Eric and wife Alexandra, and Matthew and wife Anne-Marie, daughter Casey, brothers Steven and Robert, and mother Rhoda. Donations may be made to Friendship Circle San Diego or La Jolla Symphony Orchestra.

Raymond George, Jr. ORTHO 88 President and orthodontist at George Family Orthodontics of North Attleboro, Massachusetts, died suddenly on Tuesday, August 13, 2013, at age 55. He graduated from Seekonk High School in 1976, Tufts University School of Dental Medicine in 1986, and the orthodontics program at GSDM in 1988. Dr. George was a past president of the Rhode Island Dental Association and the Rhode Island Association of Orthodontists; Bailli of the Rhode Island Chapter of Chaine de Rotisseurs; member of the University Club in Providence; as well as several other social, civic, and professional organizations. He left behind Maria Matracia, his companion of eight years. Dr. George was the son of Dr. Raymond George Sr. of Lincoln, Rhode Island and Theresa (Sledziewski) George of Pawtucket, Rhode Island. He also leaves his three children Kelsey Ann George DMD 16, Jenna Rae George, and Nicholas Williams George; his sisters and brothers, Joanne George, Semia Dunee, Christiaan George, and Chafic George; and nephews and a niece.

Braham Pearlman PERIO 69 died on February 24, 2013. He was 74. He is remembered as a distinguished dentist, a progressive practitioner, and a learned lecturer. Dr. Pearlman



(far left) **James J. Wu OMFS 97** examining a Moldovan patient (near left) **Wu with his daughters**

had a passion for his work as a periodontist and showed great love and care for his patients. Dr. Pearlman practiced in Australia, England, and the United States; lectured in Sydney and Newcastle; and served in numerous roles at the Royal Australasian College of Dental Practitioners. Dr. Pearlman was born in 1939 to Minnie and Mark Pearlman. In addition to his education at GSDM, Dr. Pearlman studied dentistry and was a post-graduate researcher in Sydney and London as. He became a specialist periodontist in 1969 before commencing work as a university lecturer and eminent practitioner in London, Sydney, and Newcastle.

Dr. Pearlman was an associate professor at University of Sydney and University of Newcastle and served in numerous roles for the Royal Australasian College of Dental Practitioners including as registrar and president-elect until shortly before his death. Dr. Pearlman would have become the next president of the college, an honor he was looking forward to as marking the pinnacle of his distinguished career. He served on numerous committees and led several local and international dental organizations, including the Australian Society of Periodontology and the International College of Dentists.

Dr. Pearlman leaves behind his wife, Deborah, and his children Joel, David, Jonny, Samantha, Melissa, Natalie and Lindsey, as well as his 14 grandchildren.

James (Jim) Simon ENDO 63 passed away on February 3, 2013. Dr. Simon was born in 1934 in Boston. Following his graduation from the Phillips Exeter Academy in New Hampshire in 1953, he attended Bowdoin College in Brunswick, Maine, where he majored in biology. Dr. Simon received his DDS from Temple University School of Dentistry. At the Boston University School of Medicine, Dr. Simon studied oral pathology and endodontics with Henry Goldman, Kurt Thoma, and Herbert Schilder. After receiving a certificate in endodontics, Dr. Simon maintained a private practice in Quincy, Massachusetts. After three years in private practice, Dr. Simon joined the Veteran's Administration in White River, Vermont, treating endodontic cases and

serving as a research associate at Dartmouth Medical School in Hanover, New Hampshire.

In 1968 Dr. Simon joined the VA Medical Center in Long Beach, California, and started the first endodontic residency program there. For the next 32 years, Dr. Simon was the Director of the Endodontic Residency Program at the VA Long Beach where he mentored and trained more than 60 residents. During that period, Dr. Simon also held a part-time teaching position at USC School of Dentistry. In 1974, he joined the faculty at Loma Linda School of Dentistry. In July 2001, Dr. Simon was recruited to USC where he served as Professor of Clinical Dentistry and Director of the Advance Endodontics program. During that time he mentored and trained more than 110 advance endodontic students.

Dr. Simon was a Diplomate of the American Board of Endodontics, President of the College of Diplomates of the American Board of Endodontics, Director and President of the American Board of Endodontics, Fellow of the American College of Dentists and Fellow of the International College of Dentists. He was member of many prestigious dental organizations and held leadership positions in the American Association of Endodontists. Dr. Simon published extensively in the dental and endodontic literature and in 2005 he received the Louis I. Grossman Award by the American Association of Endodontists.

Jim is survived by Helen, his wife of 53 years, his children Jeffrey, Linda and David, and his grandchildren Alexis, Morgan, Jake, Jordan and Jason.

Harold Turner PEDO 71 of Delray Beach, Florida, and formerly of Newton, Massachusetts, passed away on June 28, 2013. Turner was the beloved husband of the late Estelle Ruth (Isaacson); the devoted father of Jo-Anne (Jayme) Turner and the late Shayne and Steven Turner; dear grandfather of Ian Turner Cook and Remy Turner Bourgeois; and dear brother of the late Minnie Weinstein, Morris Turetzky and Shirley Levinson. Remembrances may be made to Crohn's and Colitis Foundation of America, 386 Park Avenue South, 17th Floor, New York, New York 10016.

Anthony M. Wojcicki, DMD, PEDO 70 passed away peacefully in his sleep at his home in Amherst, New Hampshire, on May 1, 2013.

Though distinguished by many personal and professional accomplishments, Dr. Wojcicki was a humble man with an incredible zest for life. He will be remembered by his family, many friends, and colleagues for his wonderful humor, many and varied hobbies, and his great love of dentistry.

His greatest joy was sharing his life with his beloved wife, his dearest children, treasured friends, wonderful patients, and the devoted team that he cherished during his long career. His love of family extended around the world, including Ireland, England, and the United States.

Dr. Wojcicki was raised in Worcester, Massachusetts, attended the College of the Holy Cross, and earned his DMD from the University of Pennsylvania. He went on to post-graduate training at Boston University School of Graduate Dentistry and Tufts University School of Dental Medicine.

He held teaching positions at Boston University, Tufts University, and Harvard University/Children's Hospital. He was a member of the American Dental Association, American Association of Orthodontics (retired), American Association of Pediatric Dentistry (retired), New Hampshire Dental Society, and the Greater Nashua District Dental Society (former secretary, president). He practiced as a dual-specialist in orthodontics and pediatric dentistry in Nashua, New Hampshire, for many years.

Dr. Wojcicki is survived by his loving wife of 39 years, Caroline; his daughter, Dr. Kelly S. Wojcicki of Rye, New Hampshire; his son, A. Dane Wojcicki of Portland, Maine; and his sister and brother-in-law, Dr. and Mrs. Robert Norman of Newtown, PA.

Donations may be made to SHARE Outreach, Inc., 1 Columbus Avenue, Milford, New Hampshire 03055 and the Greater Nashua Dental Connection, 31 Cross Street, Nashua, New Hampshire 03064.

On the Road



Kimberley and Mrs. Sylvia Kramer, widow of the late Dr. Gerald M. Kramer, former GSDM chair of Periodontology

Dean Jeffrey W. Hutter, Assistant Dean for Development Kevin Holland, Director of Alumni Relations & Annual Giving Stacey McNamee, and Director of Development Kimberley Miller visited GSDM friends and alums around the US and the world during the summer.



Dean and Mrs. Hutter and Mr. Subhajati Angsuvarnsiri GSM 77, president of the Boston University Alumni Network of Thailand, at the 50th Anniversary Celebration and Alumni Reception in Bangkok



Kimberley and Madjid Matin PERIO 91 at his private practice in Chevy Chase, Maryland. Dr. Matin also practices in Washington, DC.



Members of the Boston University Italian Alumni (BUITA) join Dean Jeffrey W. Hutter, Kimberley, and Kevin for the evening during the International Symposium on Periodontics & Restorative Dentistry (Quintessence)



Kevin and Richard Laube CAS 78, CEO Nobel Biocare, at Quintessence



Kimberley visited father and son team of Donald Feldman ORTHO 71 and Craig Feldman ORTHO 99 at their private practice in Lynn, Massachusetts.



Kevin visited Thomas Oppenberg DMD 87 in his office in Munich

➔ (clockwise from top right) Kimberley visited **Michael Stiglitz PERIO 72** at his private practice in Washington, DC; Dean Hutter and Dr. Henry Rauter, Chair of VITA Zahnfabrik, posing with the patron saint of dentistry, Saint Apollonia; Liz Montero GMS 07, DMD 11 and Stacey at the AAPD reception in Orlando in May; Kimberley visited **Vahid Varasteh DMD 89** (father of Ava Varasteh, CGS 16) at his private practice in North Reading. Dr. Varasteh has joined GSDM's Executive Circle



Celebrating our **first** 50 years

Join us at an alumni reception this fall/winter.

NOVEMBER 2	ALUMNI RECEPTION AT THE ADA	NEW ORLEANS, LA
NOVEMBER 4	APHA ANTHONY JONG AWARDS DINNER	BOSTON, MA
NOVEMBER 6	NEW YORK ALUMNI RECEPTION	NEW YORK, NY
NOVEMBER 12	ALUMNI RECEPTION AT THE HOME OF ALUM ROBERT MILLER	BOCA RATON, FL
NOVEMBER 14	ALUMNI RECEPTION AT NESO	RIO GRANDE, PR
NOVEMBER 30	RED HOT HOCKEY	NEW YORK, NY
FEBRUARY 5, 2014	ALUMNI RECEPTION IN DUBAI	DUBAI, UAE

Development & Alumni Relations is:

Kevin Holland
Assistant Dean for Development
kevinh@bu.edu
617-638-4884

Leslie Caiola
Alumni Coordinator
lesliec@bu.edu
617-638-4891

Stacey McNamee
Director of Alumni Relations & Annual Giving
smcnamee@bu.edu
617-638-4778

Kimberley Miller
Director of Development
kbranca@bu.edu
617-638-4867

Donor Roll FY 2013

Boston University Henry M. Goldman School of Dental Medicine recognizes and thanks the following donors who contributed to the School between July 1, 2012, and June 30, 2013.

- President's Society (AFLGS) Member
- Young Alumni Giving Society Member
- Faculty/Staff Member
- Parent
- Three-year Consecutive Giving
- First-time Donor
- Deceased

\$50,000-\$99,999

Dr. Ramesh Narang ■■

\$25,000-\$49,999

Dr. Jayasri Gunarajasingam,
Lynn Dental Health ■■

\$10,000-\$24,999

Dr. Abdulelah M. S. Binmahfooz ■■
Dr. Sudha S. and
Mr. Suryanaryana M. Chinta ■■
Mrs. Ernestine A. Gianelly ■■
Dr. David P. and
Mrs. Wendy E. Lustbader ■
Dr. Carol K. Yun ■

\$5,000-\$9,999

Dr. and Mrs. Philip S. Badalamenti ■
Dr. Timothy S. Colton ■■
Dr. Ray English, The Ray English Jr.
Trust-2004 ■■
Dr. Judith A. Jones ■■
Dr. and Mrs. Steven M. Morgano ■■
Dr. Peter T. T. Ngo ■
Dr. Yousri Z. Said Tawfik ■
Dr. Cheryl L. Ullman ■■

\$2,500-\$4,999

Dr. Anthony V. Amato ■
Dr. Nazila Bidabadi
Dr. and Mrs. Joseph M. Calabrese ■■
Dr. and Mrs. Frank P. Casarella ■■
Dr. Gennaro L. Cataldo ■■
Dr. Christopher Clancy,
Worcester Oral Surgery, PC ■
Drs. Alfred D'Auge and
Valerie Vincelleto ■■
Dr. and Mrs. Richard
D'Innocenzo ■■
Dr. Shadi Daher ■■
Dr. Stephen J. Reichheld ■
Dr. Paul A. Fugazzotto ■■
Dr. Jasjit S. Gill,
Worcester Oral Surgery, PC ■■

Dr. and Mrs. John F. Guarente ■■
Dr. Katherine A. Haltom ■■
Dr. Ralph D. Hawkins ■■
Dr. John P. Hoover ■
Dr. Bing Liu,
Pleasant Family Dental, PC ■■
Dr. Celeste Kong and
Mr. William L. Maness ■■
Dr. and Mrs. Richard P. Mungo ■■
Dr. and Mrs. Yoshihiro Ono ■
Dr. Frank G. Oppenheim ■■
Drs. Josephine C. Pandolfo and
Spiro S. Saati ■
Dr. Stephen J. Reichheld ■
Ms. Leila J. Rosenthal ■■
Drs. Angela V. and Scott M. Ross ■■
Dr. William P. Shaeffer ■
Drs. Michael J. and Su J. Shaeffer ■■
Dr. and Mrs. Ronald G. Weissman,
Gentle Communications, LLC ■■
Dr. and Mrs. James J. Wu ■■
Dr. and Mrs. Donald C. Yu ■■

\$1,839-\$2,499

Dr. Kathy Alikhani and
Mr. David Peyvan ■
Drs. Craig M. Allen and Nicole J. Paquette,
Allen Dental Associates, PC ■■
Dr. Anita and Mr. Raj Gohel ■■
Drs. Dean M. and Yone V. Hauseman,
Southern Arizona Endodontics, PC ■
Dr. Sok-Ja Janket ■■
Dr. Cataldo W. Leone ■■
Dr. and Mrs. Philip L. Maloney ■■
Dr. Ramzi Sarkis and
Ms. Catherine F. Sarkis ■■
Dr. and Mrs. John P. Smith,
Southern Arizona Endodontics, PC ■■
Dr. Henry C. Yu ■

\$1,000-\$1,838

Anonymous ■
Dr. Salem M. Al-Qabandi ■
Dr. Eric G. Anderson ■■

Drs. Marshall A. and
Pamela Z. Baldassarre ■
Dr. and Mrs. Jeffrey A. Becker ■■
Dr. and Mrs. Avram S. Berger ■■
Dr. Alan Berko ■■
Dr. Paul R. Bianchi ■■
Dr. and Mrs. Howard Bittner ■■
Dr. Donald F. Booth ■■
Dr. and Mrs. John F. Bowley ■■
Dr. and Mrs. Lawrence R. Brenner ■■
Dr. and Ms. David G. Burros,
Southern Arizona Endodontics, PC ■■
Dr. Susan M. Camacho ■
Drs. John C. and Maureen L. Cataudella,
Oral Surgery South PC ■■
Dr. Vincent Celenza and
Mrs. Christine A. Blend ■
Dr. Ya-Yi Chen ■■
Dr. Wendy R. Cheney ■■
Dr. Shih-Pin W. Chou ■
Dr. Karen E. Crowley,
Londonderry Oral Surgery, PLLC ■
Dr. and Ms. Alan K. DerKazarian ■■
Dr. and Ms. Mark B. Desrosiers ■■
Dr. Stephen M. Desrosiers ■■
Dr. Christopher Douville,
Southern Arizona Endodontics, PC ■■
Dr. Kenneth B. Drizen ■■
Dr. Margaret R. Errante ■■
Dr. and Mrs. Thomas A. Ferlito ■■
Dr. and Ms. David S. Fish,
The Restorative Dental Group
of Cambridge ■
Dr. Raul I. Garcia ■■
Dr. Russell A. Giordano ■■
Mr. and Mrs. Gerald Goldman ■■
Dr. Marie Gosselin ■
Drs. Andre F. Hashem and Christine Lo ■■
Dr. Michael S. Hauser ■■
Drs. Manuel Hoyo and
Claudia Lambertucci-Hoyo,
Lake Shore Endodontics, PC ■
Dr. Chi-Chen Hsu ■
Dr. Chii-Chih Hsu ■■

Dr. Geri R. Hunter ■■
Dr. and Mrs. Joseph A. Izzi ■■
Drs. Yanling Jiang and Tao Xu ■■
Dr. Zachary U. Kano ■■
Dr. Richard H. Karr ■■
Dr. Wook-Dong Kim ■
Dr. Dong W. Kim ■■
Dr. and Mrs. William F. Lane,
Lane Oral & Maxillofacial Surgery, PC ■
Dr. Shyh-Yuan Lee ■■
Dr. Joseph Leibovici,
Oral Surgery South PC ■
Dr. Euger Lin, Marlborough OMS, PC ■
Dr. and Mrs. Charles T. Loo ■■
Drs. Patricia Machalinski and
Kelvin T. Lam ■
Mrs. Madalyn L. Mann ■■
Mr. Timothy W. McDonough ■■
Dr. John C. McManama ■■
Dr. Pushkar Mehra ■■
Dr. and Mrs. Daniel T. Moran ■■
Dr. Peter A. Morgan ■■
Dr. Anhphi T. Nguyen,
Q Smile Dental Spa ■■
Dr. and Mrs. Peter C. Niarhos ■
Dr. Chul-Wan Park ■■
Dr. and Mrs. Joseph E. Pezza ■■
Dr. Albert M. Price ■■
Mr. Daniel J. Reddy and
Ms. Diane M. D'Angelo ■■
Dr. and Mrs. Steven E. Roberts ■■
Dr. Tanius M. Rubeiz,
Oral Surgery South PC ■■
Dr. David Russell ■■
Dr. Andrew Salama ■■
Dr. Gregory W. Sanford ■
Drs. Ronni A. Schnell and
Richard A. Short ■■
Dr. and Mrs. David N. Schwartz ■
Dr. and Mrs. Francis Shaeffer ■■
Drs. Amir O. and Shahrzad Shahbazian,
Quincy Family Dental ■■
Dr. and Mrs. Michael C. Sheff,
Pedodontic Associates of Newton ■■
Dr. and Mrs. Frank P. Stout ■
Drs. Mark C. Tindall and Jennifer Tindall ■
Dr. Tina M. Valades and
Mr. Ralph D. Tullberg ■■
Dr. and Mrs. John T. Veale ■■

Drs. Chu-June Wang,
 Ocean West Dental Group ■ ■ ■
 Dr. and Mrs. Walter A. Weaver ■ ■ ■
 Dr. Leslie A. Will ■ ■ ■ ■
 Dr. and Mrs. Roger J. Wise ■ ■ ■
 Drs. Hideo and Satomi S. Yamamoto ■ ■ ■ ■ ■
 Dr. Shu-Wei Yang ■ ■ ■
 Dr. Araxie Yetenekian ■ ■ ■ ■
 Dr. Shing-Wai Yip ■ ■ ■
 Dr. Jason M. Zeim ■ ■ ■ ■
 Dr. Huiqing H. Zhang and
 Mr. Yingli Mao ■ ■ ■ ■

\$500-\$999

Dr. Salomon Amar ■ ■ ■ ■ ■
 Mr. and Mrs. Dan R. Baldelli ■ ■ ■ ■ ■
 Dr. Laura Becerra-Vilaplana ■ ■ ■ ■ ■
 Dr. Myra J. Brennan ■ ■ ■ ■ ■
 Drs. Michael L. Cahoon and
 Laima V. Anthaney ■ ■ ■ ■ ■
 Dr. Gregory Caldwell ■ ■ ■ ■ ■
 Dr. and Mrs. Robert P. Campbell ■ ■ ■ ■ ■
 Dr. Naheed A. Daya ■ ■ ■ ■ ■
 Dr. Shelby J. Denman ■ ■ ■ ■ ■
 Dr. and Mrs. Larry G. Dunham ■ ■ ■ ■ ■
 Dr. Badrieh Edaltpour ■ ■ ■ ■ ■
 Dr. Nancy R. Ekelman ■ ■ ■ ■ ■
 Dr. Kristi E. Erickson ■ ■ ■ ■ ■
 Dr. and Mrs. Robert N. Eskow ■ ■ ■ ■ ■
 Dr. Paul S. Farsai ■ ■ ■ ■ ■
 Dr. and Mrs. Karl A. Flanzer ■ ■ ■ ■ ■
 Dr. Helen K. Foo ■ ■ ■ ■ ■
 Dr. Fidelito Gabriel ■ ■ ■ ■ ■
 Drs. Manuel Garcia and Sara L.
 Gonzalez-Blanco ■ ■ ■ ■ ■
 Dr. and Mrs. Raymond George,
 George Family Orthodontics ■ ■ ■ ■ ■
 Drs. Dario Enrique Gonzalez Arria and
 Shila Sharifi ■ ■ ■ ■ ■
 Dr. and Mrs. William M. Gordon,
 Gordon Orthodontics ■ ■ ■ ■ ■
 Dr. Pauline Hall ■ ■ ■ ■ ■
 Dr. Dao B. Hoang ■ ■ ■ ■ ■
 Dr. and Mrs. Justin Hughes,
 Southern Arizona Endodontics, PC ■ ■ ■ ■ ■
 Dr. Sheldon J. Itzkowitz,
 Attleboro Periodontics &
 Implantology ■ ■ ■ ■ ■
 Dr. Mehmet Kahveci and Mrs. Karen Clark ■ ■ ■ ■ ■
 Mr. Fred Kalinoff ■ ■ ■ ■ ■

Dr. and Mrs. Howard B. Kay ■ ■ ■ ■ ■
 Dr. Samer G. Khayat ■ ■ ■ ■ ■
 Drs. Ghassan A. Khoury and
 Thenia Kazou ■ ■ ■ ■ ■
 Dr. and Mrs. Thomas B. Kilgore ■ ■ ■ ■ ■
 Dr. Kirill Klimashov ■ ■ ■ ■ ■
 Dr. Karl Krause,
 Catskill Oral Surgery, PC ■ ■ ■ ■ ■
 Dr. Sung Y. Lee ■ ■ ■ ■ ■
 Dr. David E. Levin ■ ■ ■ ■ ■
 Ms. Mary Loadholt ■ ■ ■ ■ ■
 Dr. and Mrs. Steven J. Marcello ■ ■ ■ ■ ■
 Dr. and Mrs. Elliott D. Maser ■ ■ ■ ■ ■
 Dr. Jonathan E. Michelsohn ■ ■ ■ ■ ■
 Dr. and Mrs. Robert J. Miller ■ ■ ■ ■ ■
 Dr. Dan Nathanson ■ ■ ■ ■ ■
 Dr. Christopher H. Nguyen ■ ■ ■ ■ ■
 Dr. Young C. Park and Ms. Jinah Seo ■ ■ ■ ■ ■
 Dr. and Mrs. Steven P. Perlman ■ ■ ■ ■ ■
 Dr. Douglas N. Riis ■ ■ ■ ■ ■
 Dr. and Mrs. Michael W. Roberts ■ ■ ■ ■ ■
 Dr. and Mrs. Bruce G. Robinson ■ ■ ■ ■ ■
 Dr. Richard A. Rosen ■ ■ ■ ■ ■
 Dr. Samuel Shames ■ ■ ■ ■ ■
 Dr. Steven Shapiro ■ ■ ■ ■ ■
 Dr. Joseph B. Silberman ■ ■ ■ ■ ■
 Dr. Jeanne C. Sinkford ■ ■ ■ ■ ■
 Dr. Douglas W. Stewart ■ ■ ■ ■ ■
 Dr. Meng Su and Mr. Kevin Lei ■ ■ ■ ■ ■
 Dr. Adela A. Tarshi ■ ■ ■ ■ ■
 Drs. Linh N. Van and Joseph D. Fridgen ■ ■ ■ ■ ■
 Dr. and Mrs. Thomas E. Van Dyke ■ ■ ■ ■ ■
 Dr. Julie S. Vigneault ■ ■ ■ ■ ■
 Dr. Timothy B. Welch,
 Northwest Oral Maxillofacial and
 Implant Surgery ■ ■ ■ ■ ■
 Drs. Jonathan S. Zucker and
 Janet R. Peters ■ ■ ■ ■ ■

\$250-\$499

Dr. Rosario Alvarez,
 Alvarez Dental Group ■ ■ ■ ■ ■
 Dr. Uma Arunkumar ■ ■ ■ ■ ■
 Dr. and Mrs. John B. Bassett ■ ■ ■ ■ ■
 Dr. and Mrs. Louis S. Belinfante ■ ■ ■ ■ ■
 Dr. Leonard Bernstein ■ ■ ■ ■ ■
 Dr. Andra M. Boak ■ ■ ■ ■ ■
 Dr. Louis M. Brown ■ ■ ■ ■ ■
 Dr. and Mrs. J. E. Carchidi ■ ■ ■ ■ ■
 Dr. Gladys G. Carrasco ■ ■ ■ ■ ■

Dr. and Mrs. Paul Chapnick ■ ■ ■ ■ ■
 Dr. Douglas W. Conn ■ ■ ■ ■ ■
 Dr. and Mrs. David A. Cottrell ■ ■ ■ ■ ■
 Dr. Neide M. Coutinho ■ ■ ■ ■ ■
 Dr. Badri Z. Debian,
 Holyoke Dental Associates ■ ■ ■ ■ ■
 Dr. and Mrs. H. Nelson Eddy ■ ■ ■ ■ ■
 Dr. Barmack Emami,
 Quincy Center for Endodontics, PC ■ ■ ■ ■ ■
 Dr. and Mrs. Theodore F. Engel ■ ■ ■ ■ ■
 Dr. Arthur H. Fierman ■ ■ ■ ■ ■
 Drs. Debbie Friedlander and
 Louis M. Brown ■ ■ ■ ■ ■
 Dr. Carmen Garcia ■ ■ ■ ■ ■
 Dr. Ghazwan F. Ghazi and
 Ms. Suhair Hijazi ■ ■ ■ ■ ■
 Dr. Richard C. Gillis ■ ■ ■ ■ ■
 Dr. and Mrs. Robert H. Gilman ■ ■ ■ ■ ■
 Dr. and Mrs. George A. Gonzalez ■ ■ ■ ■ ■
 Ms. Jackie Hernon ■ ■ ■ ■ ■
 Dr. and Mrs. Marc Hertzberg ■ ■ ■ ■ ■
 Dr. Zhiqiang Huang ■ ■ ■ ■ ■
 Dr. and Mrs. David S. Kam ■ ■ ■ ■ ■
 Drs. Joan H. and Glenn P. Kimball ■ ■ ■ ■ ■
 Drs. Burton and Laureen S. Langer ■ ■ ■ ■ ■
 Dr. and Mrs. Roderick W. Lewin ■ ■ ■ ■ ■
 Dr. and Mrs. Weldon S. Lloyd ■ ■ ■ ■ ■
 Dr. Ken Marsh ■ ■ ■ ■ ■
 Dr. Linda J. Massod ■ ■ ■ ■ ■
 Dr. and Mrs. Jeremy Michaelson ■ ■ ■ ■ ■
 Dr. Gregg L. Mond ■ ■ ■ ■ ■
 Dr. and Mrs. Michael F. Moynihan ■ ■ ■ ■ ■
 Drs. Martin C. Nager and
 Denise M. Shapiro ■ ■ ■ ■ ■
 Dr. Tom M. Nguyen ■ ■ ■ ■ ■
 Dr. and Mrs. Franklin D. Niver ■ ■ ■ ■ ■
 Dr. Malekshah Oskoui ■ ■ ■ ■ ■
 Dr. and Mrs. George W. Pirie ■ ■ ■ ■ ■
 Dr. Terry J. Rebizant ■ ■ ■ ■ ■
 Dr. Robert P. Rubins ■ ■ ■ ■ ■
 Dr. Douglas S. Schildhaus ■ ■ ■ ■ ■
 Dr. and Mrs. Norbert J. Shay ■ ■ ■ ■ ■
 Dr. Sein H. Siao ■ ■ ■ ■ ■
 Dr. and Mrs. Hyman Smukler ■ ■ ■ ■ ■
 Drs. Richard J. Sorbera and
 Shibly D. Malouf ■ ■ ■ ■ ■
 Dr. and Mrs. Warren R. Tessler ■ ■ ■ ■ ■
 Dr. Dewey J. Tiberii ■ ■ ■ ■ ■
 Dr. Richard W. Valachovic ■ ■ ■ ■ ■
 Dr. Lisa S. White-Paul and ■ ■ ■ ■ ■

Mr. Barry S. Paul ■ ■ ■ ■ ■
 Dr. and Mrs. Louis M. Yarmosky ■ ■ ■ ■ ■
 Drs. Maria D. Zequeira and
 Robbert J. Van Hartingsveldt ■ ■ ■ ■ ■

\$1-\$249

Dr. and Mrs. Ronald H. Abel ■ ■ ■ ■ ■
 Dr. Rachele Abou-Ezzi ■ ■ ■ ■ ■
 Dr. and Mrs. Martin A. Acquadro ■ ■ ■ ■ ■
 Dr. Farnaz Adibi ■ ■ ■ ■ ■
 Dr. Dhiren J. Agrawal ■ ■ ■ ■ ■
 Dr. Rashmi Agrawal ■ ■ ■ ■ ■
 Dr. Layeeq Ahmed ■ ■ ■ ■ ■
 Dr. Jung Ahn ■ ■ ■ ■ ■
 Dr. Sayed M. Al-Mousawi ■ ■ ■ ■ ■
 Dr. Monica E. Alcade-Acosta ■ ■ ■ ■ ■
 Dr. Ammar Ali Eshky ■ ■ ■ ■ ■
 Dr. Ghyath Alkhalil ■ ■ ■ ■ ■
 Dr. and Mrs. Myron Allukian ■ ■ ■ ■ ■
 Dr. and Mrs. Paul B. Alper ■ ■ ■ ■ ■
 Dr. Yaser A. M. Alsaifi ■ ■ ■ ■ ■
 Dr. Christine C. Ambrose ■ ■ ■ ■ ■
 Dr. Ju Young An ■ ■ ■ ■ ■
 Dr. Anca A. Andronesi ■ ■ ■ ■ ■
 Dr. Alexandra Antonescu ■ ■ ■ ■ ■
 Dr. Rakshith Arakotaram Ravikumar ■ ■ ■ ■ ■
 Dr. Jose G. Arciniegas ■ ■ ■ ■ ■
 Dr. Ronen Armin ■ ■ ■ ■ ■
 Dr. Varun Arya ■ ■ ■ ■ ■
 Dr. Obadah Hisham A. Attar ■ ■ ■ ■ ■
 Dr. and Mrs. David Auerbach ■ ■ ■ ■ ■
 Dr. Ammar W. Awadi ■ ■ ■ ■ ■
 Dr. Anna Azar ■ ■ ■ ■ ■
 Dr. Evis Babo, ■ ■ ■ ■ ■
 Peachtree Smile Center ■ ■ ■ ■ ■
 Dr. Sriveidi Babu ■ ■ ■ ■ ■
 Dr. Alekhya Deepthi Badam ■ ■ ■ ■ ■
 Dr. Adriana Baiz ■ ■ ■ ■ ■
 Dr. Orla Baker ■ ■ ■ ■ ■
 Dr. Nicholas Baldelli ■ ■ ■ ■ ■
 Dr. Venkata Siva Prasad Bandi ■ ■ ■ ■ ■
 Dr. Li Bao ■ ■ ■ ■ ■
 Dr. Anne Barnes ■ ■ ■ ■ ■
 Dr. Kelly Barnes,
 Sudbury Endodontics PC ■ ■ ■ ■ ■
 Dr. Berokh Bavar ■ ■ ■ ■ ■
 Dr. Stacey J. Bell ■ ■ ■ ■ ■
 Dr. Alan F. Berdan ■ ■ ■ ■ ■
 Dr. Danielle P. Berkowitz ■ ■ ■ ■ ■
 Mr. Ryan T. Bersani ■ ■ ■ ■ ■

Donor Roll FY 2013

Dr. Jithendar Bhonagiri ■
 Dr. Christopher R. Bickford ■
 Dr. and Mrs. Herbert S. Birnbaum
 Dr. Sanjay R. Bommu ■
 Dr. Joseph Bousaba ■
 Dr. and Mrs. Daniel C. Braasch ■
 Dr. Colin Brady ■
 Dr. Colin R. Branton
 Dr. and Mrs. Alan H. Bresalier ■
 Dr. Andy Brito ■
 Ms. Susan J. Britt ■
 Dr. Lindsay Bruneau ■
 Dr. Swetha Budda ■
 Dr. Hamad M. Burashed ■
 Dr. Maria Angela V. Cancado ■
 Dr. Marilyn F. Canis ■
 Dr. Maria E. Cardenas De Carrillo
 Dr. and Mrs. Dominic R. Caruso
 Dr. Lisa Carvalho,
 Rockdale Dental Associates
 Dr. Moira Casey ■
 Dr. and Mrs. Santo S. Cataudella ■
 Dr. and Mrs. Daniel R. Cerio
 Dr. Navneet K. Chahal ■
 Dr. Sumit Chanana
 Dr. Claire Chang ■
 Dr. Bharathi Charugundla ■
 Dr. and Mrs. Jonathan S. Chase
 Drs. Ethan D. Chase and
 Felian D. Cabael ■
 Dr. Brian J. Chase ■
 Dr. Najla Chebib
 Dr. Frank J. Chiminello
 Dr. Lauren E. Chinnici ■
 Dr. Justin M. Cifuni ■
 Dr. Omar Clor ■
 Dr. Derek Collins ■
 Dr. Alan H. Cooper
 Dr. and Mrs. Frederick F. Courtney ■
 Dr. Delia Cruz Elizundia ■
 Dr. and Mrs. Ronald M. Curtis
 Dr. Matthew W. Czernick ■
 Dr. Amir Arsalan Dadkhah ■
 Dr. Nadia D. Daljeet ■
 Dr. Andrew Danczak ■
 Dr. and Mrs. Richard M. Dannenbaum
 Dr. David M. Dano ■
 Dr. and Mrs. J. T. Dean
 Dr. Mehrdad Dehpanah ■
 Dr. Ansh Y. Desai ■

Mrs. Marianne B. DeSouza
 Dr. Antonela Dhamko ■
 Dr. Paramvir S. Dhariwal
 Dr. Serge N. Dibart ■
 Dr. David C. DiBenedetto ■
 Dr. and Mrs. Victor S. Dietz ■
 Dr. Lynsey T. Doan ■
 Dr. Mark Doherty
 Dr. Agnes H. Donahue
 Dr. Christina Donnelly ■
 Dr. Michael Donovan ■
 Dr. Adelina Duka ■
 Dr. and Mrs. James H. Dyen ■
 Dr. Deborah A. Edgerly
 Dr. Rami S. El Sebai ■
 Ms. Diane K. Ellis
 Dr. Mohamed H. F. Elnazer ■
 Dr. Erik Engelbrekton ■
 Ms. Sonja Evans ■
 Dr. and Mrs. Aristides E. Exarchos ■
 Dr. Assia F. Fain,
 Lakeside Dental
 Dr. Shannon Farazi ■
 Dr. Michael Faynzilberg ■
 Drs. Daniel B. Feit and Diane L. Jonas
 Dr. and Mrs. Donald L. Feldman ■
 Dr. A. L. Felgar
 Dr. and Mrs. Kevin P. Ferguson
 Dr. Mark S. Ferrero ■
 Dr. and Mrs. Arthur Fertman ■
 Dr. and Mrs. Cary N. Feuerman
 Dr. Mark Folickman ■
 Dr. Andrea M. Fraser ■
 Dr. and Mrs. Ronald M. Fried
 Dr. Alan Friedman,
 The Dental Office at Chestnut Hill
 Dr. David M. Gabelman ■
 Dr. Neha Garge ■
 Dr. Ilya L. Garibyan ■
 Dr. Mario Gatti ■
 Dr. Ben Geisler ■
 Dr. Balkrishna R. Gentyala ■
 Dr. Douaa M. Girgis
 Dr. Marly J. Gomes
 Dr. Montserrat Gonzalez do Nascimento
 Dr. and Mrs. Alvin S. Goodman
 Dr. and Mrs. F. K. Gott
 Dr. Mara L. Green and
 Mr. Michael J. Cohen ■
 Dr. Adina S. Green and

Mr. Rory S. Breidbart
 Dr. John Greiner ■
 Drs. Jeffrey J. Grossman and
 Sylvia E. Apitz ■
 Dr. and Mrs. Stephen H. Grossman ■
 Dr. Simran Grover ■
 Drs. Sergio Guzman and Carolina Mujica
 Dr. Joseph Hackstie ■
 Dr. Mark N. Haddad ■
 Dr. Sam J. Halabo
 Dr. Fred Harrington and
 Mrs. Alanna D. Bravman ■
 Dr. Joel H. Harrison ■
 Dr. Roxana Hashemian ■
 Dr. and Mrs. James A. Hazlett
 Dr. Phillip W. Head ■
 Dr. Michelle Henshaw ■
 Dr. Thomas Hernon ■
 Dr. and Mrs. Jay T. Hodge ■
 Dr. and Mrs. Gary S. Hoffman ■
 Dr. Steven Hoh ■
 Mr. Kevin G. Holland and
 Mr. Mike Mason ■
 Dr. Michele A. Holzinger ■
 Dr. Wayne V. Hotzakorgian
 Dr. Fred Hsu ■
 Dr. Misi Huang ■
 Dr. Ayesha Husain ■
 Dr. James Hwang
 Dr. and Mrs. Robert W. Iacovelli ■
 Dr. Marian Ibarra ■
 Dr. Maisy S. Ibrahim and
 Mr. Amir G. Ibrahim ■
 Dr. Abdallah K. Ifraitekh ■
 Drs. Lawrence E. and LeLeng P. Isaacs
 Dr. Siddharth P. Iyer ■
 Dr. Heta S. Jasani ■
 Dr. Usman Javed ■
 Dr. and Mrs. Tarun Jhamb ■
 Dr. Andrew Jorgensen ■
 Dr. Dany Jose ■
 Dr. and Mrs. Robert W. Jung
 Dr. and Mrs. Brian M. Kabcenell ■
 Dr. Navid Kabiri ■
 Dr. Yossri M. Kairlis,
 Westside Dental, Inc. ■
 Drs. Shirohi and Kumiko Kamachi ■
 Dr. Mohamad A. Kamel ■
 Dr. Wesley Karlson ■
 Ms. Janis G. Kaufman

Dr. Harminder Kaur ■
 Dr. George L. Keleher ■
 Mrs. Mary L. Kellerman ■
 Dr. and Mrs. Raymond A. Kenzik ■
 Mr. and Mrs. Robert Kessler ■
 Dr. Summer Farouk Khatib ■
 Dr. Ali Mohamad M. Ahmad Khibli ■
 Dr. Niloofar Khosravian ■
 Dr. Ryota Kikuchi ■
 Dr. Jennifer Kim ■
 Dr. Bernard E. Kim
 Dr. So Young Kim ■
 Dr. Rohan S. Kirtane ■
 Dr. Melissa D. Knudsen ■
 Dr. Kathy Ko ■
 Dr. Michael Kobakov ■
 Dr. and Mrs. Michael B. Koidin
 Dr. Parsia Koleini ■
 Dr. Mitchell P. Kornhaber ■
 Dr. Jack T. Krauser ■
 Dr. Afsheen Lakhani ■
 Dr. Anna M. Lechowicz ■
 Dr. Jaeseop Lee
 Dr. Soonki Lee
 Dr. Jack Ssu-Chieh Lee
 Dr. Yunji Lee ■
 Dr. Linda Lee ■
 Dr. Peter Levandoski ■
 Dr. Wenqi Li,
 Shrewsbury Dental LLC
 Dr. Bob S. Liao ■
 Dr. Herlivi M. Linares
 Dr. Hilary J. Linton ■
 Dr. and Mrs. Ronald W. Lippitt
 Dr. Shuxin Liu ■
 Dr. Sherry Y. Liu ■
 Dr. Jenny Lorenzo ■
 Dr. Rong D. Lu ■
 Dr. Rachel A. Lukas ■
 Dr. Robert Lynn ■
 Dr. Namratha Madapu
 Dr. and Mrs. Aldino P. Maggiulli
 Dr. and Mrs. William B. Maher
 Dr. Amir M. Mahoozi ■
 Dr. Nadia Malik ■
 Dr. Nazia Malik ■
 Dr. David P. Malouf
 Dr. Sara Mandell ■
 Dr. Jeffrie Maneepetasut and
 Ms. Yawen Peng ■

Dr. Michael Maya ■
Dr. Marci C. Mazzuca ■
Dr. Jennifer L. McCormack ■
Ms. Linda C. McCoy ■
Ms. Stacey L. McNamee ■ ■
Dr. and Mrs. Michael E. McQueen ■
Dr. and Mrs. Vivek S. Mehta
Dr. and Mrs. S. M. Miller
Dr. and Mrs. Brian H. Miller
Dr. and Mrs. Sylvan S. Mintz ■
Dr. Mohammad E. Mobasherat
Dr. Shiva M. Monga ■
Dr. Jahan Monirian ■
Dr. Ismael Montane ■
Dr. Patrick Moore ■
Dr. Prithvi Krishna R. Moorthi ■
Dr. Lorenzo Mordini ■ ■
Dr. Vilia B. and Mr. Donald F. Mori ■
Dr. Mani Moulazadeh ■
Dr. Sultan I. Muhammad ■
Dr. Mohamad H. Nadimi ■
Dr. Frederick F. Nafash
Dr. Suneel K. Namburi ■
Dr. Muneet K. Nanda
Dr. Minal S. Narayan ■
Dr. Paul A. Nardi ■
Dr. Shahram Navid ■
Dr. Martha L. Neely ■
Dr. and Mrs. Mark E. Nehring
Dr. Linda P. and Mr. Barry Nelson
Dr. and Mrs. Myron Nevins
Dr. Tam Nguyen ■
Dr. Sara Nikfar ■
Dr. and Mrs. David A. Noble ■
Dr. Sepideh F. Novid ■ ■
Dr. Stephanie M. Oberhaus ■
Ms. Julia A. Oberweis
Dr. Olutayo A. Odusawo ■
Dr. Ankur Oswal ■
Dr. Fransheska Ovalles ■
Dr. Rajeev Panakanti
Dr. Manjiri Pande
Dr. Satinder K. Pandher ■
Dr. and Mrs. David W. Parent
Dr. Amitkumar P. Patel
Dr. Ami M. Patel ■
Dr. Ketankumar B. Patel
Dr. Hemal B. Patel ■
Dr. Rishit P. Patel ■
Dr. Kinjal N. Patel ■

Dr. Khushbu Patel ■
Dr. Nirav B. Patel ■
Dr. Ichhya Pathak Paudel ■
Dr. Anisha V. Paul ■
Dr. and Mrs. Stuart B. Pechter ■
Dr. Timothy W. Penberthy,
Northwest Endodontics, PC ■
Dr. Christian Peralta ■
Dr. Farshad Pezeshki ■
Dr. Roger A. Phillips and
Ms. Robin M. Cushman-Phillips ■
Dr. Adam C. Polivy
Dr. Elizabeth Ponder ■
Mr. Drew C. Popper ■
Dr. Michael Posada ■
Dr. Nidhi and Mr. Sachin Prakash ■
Dr. Anna Pukhovitskaya ■
Dr. Joshua Quinby ■
Dr. Fnu Rabinder Kaur ■
Dr. Zori Z. Rabinovitz,
Cushing & Rabinovitz, PC
Dr. Kabir Ram ■
Dr. Chelsea Randall ■
Dr. Monica D. Rao
Dr. Kadambari D. Rawal ■ ■
Dr. Kavitha Rayapati ■
Dr. and Mrs. Sean A. Rayment,
Medfield Smiles, PC
Dr. Caitlin M. Reddy
Dr. Frederick E. Robinson,
Oral Surgery Associates
Southcoast, Inc.
Dr. Blake Rogers ■
Dr. and Mrs. Abraham E.
Romanowsky ■
Dr. Frederick R. Rubin
Dr. Jennifer D. Rubin ■
Dr. Manal M. A. Saadoun ■ ■
Dr. Negaar Sagafi,
Poshortho, PC ■
Dr. Babar Saleem ■
Dr. Richard D. Salzmann ■
Dr. Dimitri Samaratunga ■
Dr. Eugene S. Sandler ■
Dr. Jose A. Sapia
Drs. Ivan Savitsky and
Kathryn D. Jendrasik-Savitsky
Dr. Rishi Saxena
Dr. Frank E. Schiano ■ ■
Dr. Anthony M. Schiano ■

Dr. Steven Schlesinger ■
Dr. Robert E. Seitz ■
Dr. Alexis A. Senholzi ■
Dr. Ana C. Serrenho ■
Dr. Willette L. Shaeffer and
Mr. Jeffrey Crabtree ■
Dr. Dhara Shah ■
Dr. Kushal P. Shah ■
Dr. Azadeh Shahab ■
Dr. Pouyan Shahrokh ■
Dr. Aadir A. Shamji ■
Dr. Manu Sharma ■
Dr. Jiangyun Sheng ■
Dr. Ji Hae Shin ■
Dr. Jonathan M. Shinay ■
Dr. Mohini H. Shinde ■
Dr. Sinan A. M. Shisha ■
Dr. Natalie Shlosman and
Mr. Felix Shlosman
Dr. Danny T. O. Shum ■
Dr. and Mrs. Alan M. Shuman ■
Dr. Gursimran K. Sidhu ■
Dr. Vikas Sikka ■
Dr. Marjorie A. Silva Rapose ■
Dr. Nick Simon ■
Dr. Geetika G. Singh ■
Dr. Ritu D. Singh ■
Dr. Melissa M. Smith ■
Dr. Yunbo Song ■
Dr. Divyanshu Soni ■
Dr. Prachi S. Sontakke ■
Dr. Janice E. Spada
Dr. Jacob Stein
Dr. Ariel Stein ■
Dr. Bryna W. Steinberg ■
Ms. Josene M. Steinberg
Dr. Siri C. Steinle McNulty and
Mr. James McNulty
Dr. Robert W. Stoddard
Dr. Jacyn Stultz ■
Dr. Ming Fang Su and
Ms. Xiao Ying Zhao ■ ■
Dr. Lindy L. Su ■
Dr. Delsaz Mohamed Said Anwar
Said Sultan ■
Dr. and Mrs. Arthur F. Sun ■
Dr. Devaki Sundararajan ■ ■
Dr. Shervin Tabeshfar ■
Dr. Sonia Takasaki ■
Dr. Viktoria P. Talebian and

Mr. Pejman Talebian ■
Dr. Habib A. Tarzi ■
Dr. and Mrs. Harvey I. Taub
Dr. Ernest Tchoi ■
Dr. and Mrs. Abol M. Tehrani ■
Dr. Shailaja Thaker ■
Dr. and Mrs. David A. Theriault ■
Dr. Kanchan Thind ■
Dr. Satyanarayanan T. Thirumalai and
Ms. Deepa Ponnusamy ■
Dr. Simon Toader ■
Dr. Haoyu Tong ■
Dr. Daniela Beatriz Toro Ramirez ■
Dr. Philip C. Trackman ■ ■
Dr. Hetalbahen Trivedi ■
Dr. Heni Tufa ■
Drs. Mehmet I. and Naciye G. Uzel ■
Drs. Maria F. Valentino and
Alessandro Tatone ■
Dr. Justin Van Dusen ■
Dr. Deepthi Vasireddy
Dr. Giuseppina Verde ■
Dr. Ofelia V. Villanueva,
Usaphil Dental Health Care II
Dr. Michelle N. Vo ■
Dr. Trinh Vo ■
Dr. and Mrs. Mark S. Volk
Dr. Carol T. Walsh ■ ■
Dr. Hanbin Wang ■
Dr. Ke Wang ■
Dr. Stanley Y. Wang,
Concord Endodontics PC
Dr. and Mrs. Jason A. Wark ■
Dr. and Mrs. Joel E. Wasley ■
Dr. and Mrs. Mark E. Westcott
Dr. and Mrs. Sean T. Willcuts
Dr. Andrew Won ■
Dr. Christina Woo ■
Dr. Yi Xu ■
Dr. Jack Xu
Dr. Europa Yang ■
Dr. Cynthia Yee ■
Dr. Joy H. Yoo ■
Dr. Insun Yoon ■
Dr. Yang Yu ■
Dr. Usman Zahid ■
Dr. Leila Zamani and
Mr. Hossein Bayat ■
Dr. Ahmed Elmagtoug Zarrouh
Dr. Noor Znad ■

C O R P O R A T E D O N O R S

Boston University Henry M. Goldman School of Dental Medicine thanks the following corporations for their contributions this fiscal year.

- | | |
|--|---|
| McKesson Foundation, Inc. | Creative Dental Enterprises, Inc. ■ |
| Nobel Biocare USA, LLC | Db Practice Management, Inc. |
| ORMCO Corporation | Elmwood Sports Center, Inc. ■ |
| Biomet 3i, LLC | Hu-Friedy Mfg. Co., Inc. ■ |
| Mizutani Foundation for Glycosciences | Ivoclar Vivadent Inc. ■ |
| Sjogren's Syndrome Foundation ■ | Johnson & Johnson Services, Inc. ■ |
| VITA Zahnfabrik ■ | Kappa Dental Group ■ |
| American Association of Endodontists ■ | North Shore Dental Laboratories, Inc. ■ |
| Dentsply International, Inc. ■ | PDL Laboratory, Inc. ■ |
| Maine Health | SS White Burs, Inc. ■ |
| Sadie & Harry Davis Foundation | Tulsa Dental Specialties |
| Satelec SAS ■ | Whip Mix Corporation ■ |
| Sirona Dental Systems ■ | Arcari Dental Laboratory, Inc. ■ |
| Eastern Dentists Insurance Company ■ | Creative Dental Images, Inc. ■ |
| Full Face Course USA, LLC ■ | Dickerman Dental Prosthetics ■ |
| Massachusetts Dental Society | Heartland Dental Care, LLC ■ |
| Colgate Palmolive Company ■ | Leorus (2004) Dental Corporation of CA |
| Dental Group Practice Association ■ | LIGA International ■ |
| Stryker Craniomaxillofacial | Miller Lung Dental Group DMD, LLP ■ |
| Aspen Dental | Patterson Companies, Inc. ■ |
| GlaxoSmithKline ■ | Ultradent Products, Inc. |
| New Hampshire Charitable Foundation ■ | Dental Ventures of America, Inc. ■ |
| Straumann USA ■ | Omnidentix |
| Voco America Inc. ■ | Tabrizi Dental Associates, Inc. |
| 3M ESPE Dental Products ■ | Triodent Corporation ■ |
| Advanced Dental Technologies, Inc. ■ | Saint Gobain Corporation |

The following donors contibuted to the 2013 Class Gift, totaling 100% giving and helping the School place first among the 16 BU schools and colleges.

Farnaz Adibi	Mohamed Elnazer	Sherry Liu	Dimitri Samaratunga
Dhiren Agrawal	Erik Engelbrektsen	Shuxin Liu	Robert Seitz
Rashmi Agrawal	Sonja Evans	Jenny Lorenzo	Ana Serrenho
Layeeq Ahmed	Shannon Farazi	Rong Lu	Dhara Shah
Jung Ahn	Michael Faynzilberg	Rachel Lukas	Darshit Shah
Ju Young An	Mark Folickman	Robert Lynn	Kushal Shah
Anca Andronesi	Neha Garge	Nadia Malik	Azadeh Shahab
Rakshith Arakotaram Ravikumar	Ilya Garibyan	Nazia Malik	Pouyan Shahrokh
Varun Arya	Ben Geisler	Sara Mandell	Aadil Shamji
Ammar Awadi	Balkrishna Gentyala	Michael Maya	Manu Sharma
Anna Azar	John Greiner	Shiva Monga	Ji Hae Shin
Alekhya Deepthi Badam	Joseph Hackstie	Jahan Monirian	Mohini Shinde
Nicholas Baldelli	Thomas Hernon	Patrick Moore	Sinan Shisha
Venkata Siva Prasad Bandi	Steven Hoh	Sultan Muhammad	Danny Shum
Li Bao	Michele Holzinger	Mohamad Nadimi	Gursimran Sidhu
Anne Barnes	Misi Huang	Frederick Nafash	Vikas Sikka
Berokh Bavar	Ayesha Husain	Suneel Namburi	Marjorie Silva Rapose
Danielle Berkowitz	Marian Ibarra	Minal Narayan	Nick Simon
Jithendar Bhonagiri	Abdallah Ifraitekh	Paul Nardi	Geetika Singh
Christopher Bickford	Heta Jasani	Rana Nassar	Ritu Singh
Sanjay Bommu	Usman Javed	Shahram Navid	Melissa Smith
Joseph Bousaba	Andrew Jorgensen	Martha Neely	Yunbo Song
Colin Brady	Dany Jose	Tam Nguyen	Divyanshu Soni
Andy Brito	Navid Kabiri	Sara Nikfar	Prachi Sontakke
Swetha Budda	Mohamad Kamel	Olutayo Odusanwo	Lindy Su
Hamad Burashed	Wesley Karlson	Adaoma Ofokansi	Delsaz Mohamed Said Anwar
Navneet Chahal	Harminder Kaur	Ankur Oswal	Said Sultan
Bharathi Charugundla	Niloofer Khosravian	Fransheska Ovalles	Habib Tarzi
Brian Chase	Sonia Kim	Satinder Pandher	Ernest Tchoi
Lauren Chinnici	So Young Kim	Hemal Patel	Kanchan Thind
Omar Clor	Rohan Kirtane	Khushbu Patel	Simon Toader
Derek Collins	Melissa Knudsen	Kinjal Patel	Haoyu Tong
Delia Cruz Elizundia	Kathy Ko	Nirav Patel	Daniela Beatriz Toro Ramirez
Matthew Czernick	Michael Kobakov	Rishit Patel	Hetalbaben Trivedi
Nadia Daljeet	Parsia Koleini	Ichhya Pathak Paudel	Heni Tufa
Andrew Danczak	Mitchell Kornhaber	Anisha Paul	Justin Van Dusen
Ansh Desai	Anna Lechowicz	Christian Peralta	Giuseppina Verde
Antonela Dhamko	Linda Lee	Elizabeth Ponder	Michelle Vo
Christina Donnelly	Yunji Lee	Michael Posada	Trinh Vo
Michael Donovan	Peter Levandoski	Anna Pukhovitskaya	Hanbin Wang
Adelina Duka	Bob Liao	Joshua Quinby	Andrew Won
Rami El Sebai	Hilary Linton	FNU Rabinder Kaur	Christina Woo
		Kabir Ram	Yi Xu
		Chelsea Randall	Europa Yang
		Kavitha Rayapati	Insun Yoon
		Caitlin Reddy	Yang Yu
		Blake Rogers	Usman Zahid
		Jennifer Rubin	Noor Znad
		Kamran Salehpour	

Keeping pace

→ For the last several decades, the way we have taught young enthusiastic dental students in America to become confident and competent dentists really has not changed much.

Winston Churchill's description of democracy could also be used to characterize dentistry instruction, namely, that the way we teach dentistry in America (probably the world) is the worst possible way, except for all the other ways! But the world and society has changed and we at the Henry M. Goldman School of Dental Medicine are keeping pace right with it. Thanks to an Applied Strategic Planning process, our School of Dental Medicine has embarked on and is in the middle of a fundamental, structural and operational change in the way we treat our patients and teach and mentor our students. As of July 1, 2014, the School will teach our students and treat our patients in a vertically integrated group practice setting.

Our School's Applied Strategic Planning process and leadership correctly identified the goal that the success of our DMD graduates is paramount and a key factor to attracting the best and most dedicated future practitioners. You see, for the most part dental education in America has always taught the technical and materials aspect of dentistry in a superb fashion. What has been missing over the last many years—and which has become more evident with the changes in an ultra-fast paced, tech-savvy society—is teaching the budding dental student the skill of “not leaving the dental operatory until the patient loves them” while never seeking to minimize the knowledge of advanced materials and exacting technics. The group practice model of clinical instruction will be a stake in the ground that will begin to teach these skills for success in a practice style that today's patients are demanding.

Patients today, of course, want a dentist that is competent and knowledgeable with the latest and greatest that dentistry has to offer; but they are also demanding more. They want a dentist who possesses that “certain something”—that in the first visit cements the doctor-patient relationship. If they feel that the dentist they just tried out did not deliver, the world will know about it through a variety of on-line review platforms, such as Yelp. Good reviews, however, are an extraordinary practice builder. Patients these days also prefer to receive the majority of their care in one location. They feel comfortable, known, and safe. They have built a multi-specialty dental group practice into their busy lives and it is convenient and familiar to them. Enter, the group practice model of clinical instruction being developed at the Henry M. Goldman School of Dental Medicine.

Consistent with our strategic planning process, we are well into the transition to the pre-doctoral patient treatment center reorganization. All students have been placed into 1 of the 9 group practices and 9 of the 18 spectacularly talented and dedicated Practice



Dr. David Russell

Leaders have been hired and on the job since July 1, 2013. Nine more will be hired, oriented, trained, and calibrated by Jan 1, 2014. Hence, there will be two partnering practice leaders ever present in each practice who will monitor patient care and student progress, teach oral diagnosis and guide treatment planning chairside, and role model that all important patient-doctor interaction. Additionally, each group practice will have assigned supervising faculty at each session that work closely with the students and Practice Leader. Most of the well-calibrated faculty will oversee most procedures. Each practice has also been assigned a Patient Coordinator to support the practices with patient assignment, clerical tasks, and eventually appointment-making. Thanks to the support and leadership of Dean Jeffrey W. Hutter and Associate Dean for Clinical Affairs John F. Guarente, this new paradigm is becoming a reality and even in this transition period bearing fruit.

The aim is that the value added by coming to the Henry M. Goldman School of Dental Medicine will be the success obtained by our graduates, sooner rather than later. We are dedicated to the idea that our students should hit the ground running and be further ahead as they embark on whatever practice type or specialty they have chosen. Thanks to the Applied Strategic Planning process and good old fashioned foresight, it is our hope that every student who graduates from our School recognizes and attributes their success, enjoyment in our profession, and their personal reward to the teaching and guidance received by the dedicated faculty. The new group practice model will facilitate that process and set our graduates up for the success that they have worked so hard to attain. I am overjoyed to be a part of it. ■

Sincerely,

Dr. David Russell
Director, Group Practice Experience and Team Leadership

Boston University Planned Giving

"I was grateful for the kind of generosity and education that I received, and I had the financial resources to help. Why not do something good with your money and help other people who will benefit from it?"



"The greatest strength of planned giving for me is the ability to keep a scholarship going forever."



A great **education** is a gift.

"I owe much of my success to the preparation I received from BU. I have always been committed to giving back, because I know that nobody makes a success of their life without the help of others."



Pass it on.

"It's important that everyone who gets something from an institution gives some of that back for those in other generations."



Make a greater **impact** on Boston University and its **students** than you ever thought possible.

Explore your planned giving options today.

Visit www.bu.edu/opg or call us at 800-645-2347 or 617-353-2255

Boston University Henry M. Goldman
School of Dental Medicine

72 E. Concord Street, B-303C
Boston, Massachusetts 02118
bu.edu/dental

NONPROFIT
U.S. POSTAGE
PAID
BOSTON, MA
PERMIT NO. 1839

See photos of your classmates at recent events and even watch students explore Central American jungles as they treat the underserved.

Post, tag, tweet, and "like".

Ask questions, reconnect with other alums, and find your next associate online.

Let's be social

Join the GSDM online community!



facebook.com/budental



[@budental](https://twitter.com/budental)



youtube.com/bugsdm



[yelp](#)
(search the school name)



flickr.com/bu_dental