

Chapman University

Chapman University Digital Commons

Joseph B. Wilkinson First World War
Correspondence Collection

CAWL Archives: First World War

1919

1919, Postcard

Joseph B. Wilkinson

Follow this and additional works at: https://digitalcommons.chapman.edu/jbwilkinson_collection

Recommended Citation

Wilkinson, Joseph B., "1919, Postcard" (1919). *Joseph B. Wilkinson First World War Correspondence Collection*. 3.

https://digitalcommons.chapman.edu/jbwilkinson_collection/3

This Letter is brought to you for free and open access by the CAWL Archives: First World War at Chapman University Digital Commons. It has been accepted for inclusion in Joseph B. Wilkinson First World War Correspondence Collection by an authorized administrator of Chapman University Digital Commons. For more information, please contact laughtin@chapman.edu.

1919, Postcard

Keywords

photograph, postcard, France, French, Autun, army, expeditionary forces, quarters, barracks, infantry, marching and drill, training, weapons, rank, infantry, housing, company, military unit, troops, soldiers, landscapes, mobilization, recruits, youth

Identifier

2014.160.w.r_ Wilkinson _worldwarone_missing-missing-missing_001

Comments

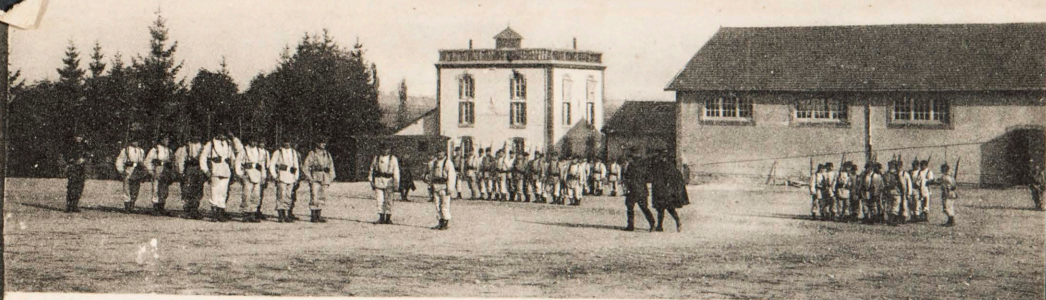
An exact date is not known for this letter. The year listed is an estimation and may not be accurate.

CARTE POSTALE

CORRESPONDANCE

ADRESSE

Where we are sleeping at the
present time



214 AUTUN — Caserne Changarnier, 29^e d'Infanterie - Instruction des jeunes recrues



[Page 1 – Postcard]

[[Image: Printed type, centered: CARTE POSTALE]]

[[Image: Printed type, both headers separated by a vertical line down the center of the card, splitting it into two equal columns:

CORRESPONDANCE

ADRESSE]]

Where we are sleeping at the
present time

[Page 2 – Photograph]

[[START Image: Two photographs, landscape orientation, split across the middle with a caption:]]

[upper image:] A scene of 4 groups of men, each containing approximately 8-10 men each, in white uniforms, all carrying rifles. There is a group in the foreground, to the left in the photo, two more in the background behind that group in the center of the image (one obscures view of the other), and a final group in the far right of the image, also in background.

The men in the group in the foreground and at viewer's left in the photo are standing at attention. There is a (presumed) officer in a black uniform at the viewer's far left of their number (their right), also at attention.

Two officers in black uniforms are walking with backs to the camera across the center of the image, in between the group in the foreground and the three in the background.

The two groups in the center background (one in front of the other) of the image are also at firm attention, and another officer in black stands to the viewer's left of the front group (their right); he is facing the group, presumably addressing them.

The group to the viewer's far right of the image stands in a huddle, rifles at their sides.

A lone man stands against the viewer's very far right of the photo, in a dark uniform, presumably surveying the scene.

The entire training session takes place on a field just outside a small glen of pine trees (to the viewer's left) and two buildings. The first is oriented in the center of the photo (just behind the farthest group): a square, multiple-story white building with a small tower in one of the roof's corners and 4 narrow windows on each façade; a small hall is connected to the façade facing the glen of trees.

The other building is a long rectangular building that supersedes the cropping of the photo on the viewer's right, located behind the huddled group of men. Its single door is located just at the edge of the photo on viewer's right, and is open (the lone man stands in front of it). There is a small antechamber attached to it on the wall facing the white square building.

[caption:] 214 AUTUN – Caserne Changarnier, 20th d'Infanterie – Instruction des jeunes recrues

[lower image]: This image contains a very long soldier's quarters hall that spans nearly the entire background of the photograph. It is a white building with high windows and four entry points, only one of which is open; this open door appears in the near-center of the photo, barely obscured by events in the foreground (see below). The building connects to a smaller antechamber hall that supersedes the photo crop on the viewer's right, which is a brick building.

The square white building described above is located in the distance to the viewer's left in the photo; it is obscured by the end of the quarters hall. Also, the same glen of trees described above supersedes the photo crop to the viewer's left.

It is important to note that the author has made a small "x" just to the viewer's right of the open entry door, under the first window, detailing the location of his sleeping space.

The events in the foreground: Though only 3 lines of soldiers in white uniforms are visible (one in foreground, and 2 in background along the same plane), logic dictates that there are further lines being obscured by the foremost group.

The foremost line of soldiers, in white uniforms, contains approximately 35-45 men, all nearly in single file, carrying rifles, and at varying degrees of attention. Their line begins to the viewer's left of the open quarters' door (though many yards in front of the building) and spans until nearly the edge of the viewer's left of the photo. There is one man in a white uniform and another in a black uniform facing the first man in line, separated by about 6 feet, both presumably addressing the men.

Another soldier in a white uniform stands about 30 feet from the line and the addressers, looking in the direction of the camera. He carries no rifle.

Obscured by the foremost soldier group are a couple officers in black striding between the two lines of soldiers. Another is walking away from the events toward the small antechamber building attached to the viewer's right of the quarters hall.

One of the background groups of soldiers are standing in a line to the viewer's right of the author's "x" on the building, and contains about 10 men. Whether they are at attention is difficult to determine.

The only other readily visible group is just to the viewer's left of the open quarters door, very much at attention, being addressed by an officer in a black uniform. That group also contains approximately 10 men.

As mentioned, there are several other groups of soldiers in lines, but they are nearly fully obscured by the foremost line of soldiers.

[printed text info of photo:] Phototyp[i]e P. Coqueugnot A[u]t[u]n

[[END Image.]]