

4-24-1969

Henri Temianka Correspondence; (shostakovich)

Dmitri Shostakovich

Follow this and additional works at: https://digitalcommons.chapman.edu/temianka_correspondence

Recommended Citation

Shostakovich, Dmitri, "Henri Temianka Correspondence; (shostakovich)" (1969). *Henri Temianka Correspondence*. 1842.
https://digitalcommons.chapman.edu/temianka_correspondence/1842

This Letter is brought to you for free and open access by the Henri Temianka Archives at Chapman University Digital Commons. It has been accepted for inclusion in Henri Temianka Correspondence by an authorized administrator of Chapman University Digital Commons. For more information, please contact laughtin@chapman.edu.

Henri Temianka Correspondence; (shostakovich)

Keywords

Henri Temianka, Dmitri Shostakovich, April 24, 1971, culture, virtuosity in musical performance, violinist, chamber music, camaraderie, postal service, musical recordings, California Chamber Symphony, Christine Kroskus, Thomas Johnson

Абуа нг оу

C W A

Me-Anaarec



Mr. HENRY TEMJANKA

2915 PATRICIA AVE

LOS ANGELES, CAL

90064

U S A

Москва 109003. ул. Герасовск 8/10, корпус 2. кв. 23. Д. Герасовск

Mr. Henry TEMIANKA
CONDUCTOR

24 4 1971

Moscow

My dear maestro,

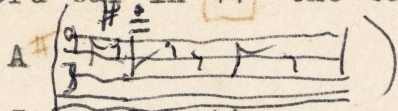
I received a tape with the recording of my 14th Symphony. Thank you very much!

In general the performance is wonderful. And I'd like to thank you warmly for it.

I greatly appreciate the work of all members of the California chamber orchestra, and of course, the high quality of Christine Kroskus & Thomas Johnson.

If you ever perform again my 14th Symphony, please note my following remarks:

3rd bar in 44 the bass have to play cis and nd



It seems it's an occasional blunder.

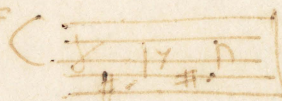
In two bell beats before 47 the ferm_ato is too long.

47 -too slow, please follow the metronome ♩ = 108

65 -too slow, follow the metronome ♩ = 144

73, 5th bar, last xylophone note G#

evidently, occasional blunder.



Pause before 81 too long, please almost attacca.

Christine Kroskos sings beautifully the 6 part, but from 84 till 86 itb must be more hysterical

88, 6th bar -why the bass play an octave below?

They must play an octave/and not two octaves/ below the cellos.

91 87, maybe it's due to the recording but it seems you play too low untill 96.

87 -too slow, right is ♩ = 72

Before 117 the pause lasts too much.

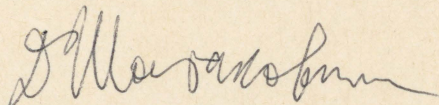
117 -too slow, right would be $\downarrow = 76$

before 124 pause lasts too much

138 4th bar With the seventh ~~xxxx~~
quaver of this bar the strings must begin
very low in order to do a great crescendo
before the end of the Symphony. Besides they
have to begin tenuto.

If you take into consideration all my remarks
it seems to me, that the performance would be even better.

With my very best wishes



Dmitry Shostakovich