

Syracuse University

SURFACE

Full list of publications from School of
Architecture

School of Architecture

Fall 1999

Architecture News Fall 1996

Bruce Abbey

Follow this and additional works at: <https://surface.syr.edu/arc>



Part of the [Architecture Commons](#)

Recommended Citation

Abbey, Bruce, "Architecture News Fall 1996" (1999). *Full list of publications from School of Architecture*. 222.

<https://surface.syr.edu/arc/222>

This Newsletter is brought to you for free and open access by the School of Architecture at SURFACE. It has been accepted for inclusion in Full list of publications from School of Architecture by an authorized administrator of SURFACE. For more information, please contact surface@syr.edu.

Architecture News

THE NEWSLETTER OF THE SYRACUSE UNIVERSITY SCHOOL OF ARCHITECTURE

Celebration: Engagement: Discourse:

125th Anniversary

On the weekend of November 6 and 7, 1998, the School of Architecture celebrated its 125th anniversary.

The keynote lecture was given by Kenneth Frampton who addressed a group of over 300 students, faculty, alumni and friends in Grant Auditorium at the College of Law on the Syracuse University Campus. Frampton's topic was "The Scope of the Tectonic". After the lecture, a reception was held in 103 Slocum Hall for all who attended.

Following the lecture and reception, an all-night School charrette began. The Design Challenge, titled "Skinny Structures: A Quick Study of the Tectonic", was defined by faculty organizers Mark Linder and Terrance Goode, to explore possibilities of representation, materiality and spacial manipulation.

The teams were provided with identical kits of materials and supplies, as well as equal access to work areas, tools, and computers. Students, faculty, and alumni worked together in teams through Saturday afternoon when the final projects were presented to a team of panelists in the fourth floor rotunda at 2pm. The panelists included Kenneth Frampton, together with Dean Abbey and Professors Christopher Gray, Arthur McDonald, Mark Linder, Anne Munly, and alumnus Bruce Fowle (B. Arch '60). The discussion was followed by a reception in the first floor rotunda.



Students participate in all phases of the West-Side Charrette.

Architecture Students Work with the Community:

The Design of a Public Plaza on the West Side of Syracuse

Students from the School of Architecture are involved in a community service project in Syracuse. The intention of the project is to develop a large parcel of vacant land located in the heart of the west side, the twelfth poorest, predominantly white neighborhood in the United States. The site is the former home of the Ward Bakery Co. which moved out in the 1970's. The vacant structure was torn down in 1995 with federal money obtained by the city, along with residual money set aside from the demolition. Lack of a concrete plan stalled the site's development and led to the possibility that the nearly \$180,000 earmarked for the future construction would be lost if a plan for the site was not generated soon.

The School of Architecture was contacted in September of 1998 to determine interest in a collaborative effort. In response, Assistant Professor David Gamble organized a weekend workshop which paired 34 graduate and undergraduate students with neighborhood residents and representatives from the Central New York chapter of the AIA and ASLA. The students worked with ideas to convert the under-utilized land into a public plaza and community structure based on a resident survey taken in the summer of 1998.

—continued on page 2

On Location Symposium

The School of Architecture, with support from the Graduate Student Organization, sponsored a conference on April 17 and 18. "On Location: Publics, Spaces, Places, Traces" assembled a panel of architects, artists, scholars and critics to "intensify a lingering and possibly irresolvable debate over the power, potential and presumptions of the concepts of *Space* and *Place* in contemporary discourse on the Public realm."

The Saturday symposium began at noon with featured speakers and a panel discussion. Rosalyn Deutsche, an art historian and critic at Princeton, spoke at noon about "Reasonable Urbanism". Edward Casey, professor of philosophy at SUNY Stony Brook, addressed "Site, Place and Space in Urban Experience". A roundtable response followed the two lectures.

Sunday featured *Traces*, a series of colloquia with presentations and discussions by scholars from across the US and Canada, including several members of our faculty. "On Location" also included an exhibition at various sites throughout the campus, including all floors of Slocum Hall, the fourth floor of Bird Library, the second floor of Eggers Hall, and the second floor of the College of Law.



Kenneth Frampton with students during the charrette.

On the evening of the 7th, Dean Abbey and Chancellor Kenneth A. Shaw hosted a gala dinner and celebration at the Everson Museum. During the pre-dinner program, Dean Abbey greeted assembled guests numbering over 300, in the Hosmer Auditorium at the Everson. Highlights of the program were remarks made by Chancellor Shaw and Vice Chancellor Gershon Vincow, along with Architecture Advisory Board Chairman Bruce Fowle. The School's Choral Ensemble performed two numbers, and entertained guests again later in the evening by singing from the balconies of the Everson at the close of the dinner.

School News
Page 3

Campaign
Challenge
Page 8

Report of Gifts
Page 10

Faculty News
Page 12

Alumni News
Page 14

daily april

ON LOCATION

@ Syracuse University

sponsored by the school of architecture and the graduate student organization

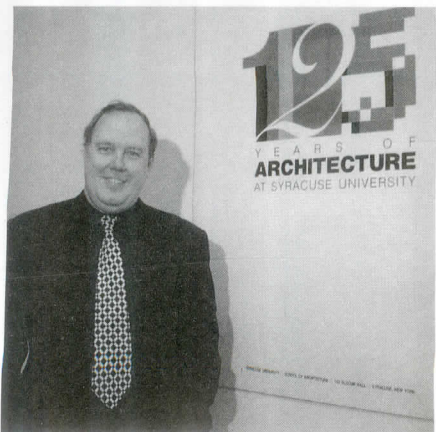
saturday 17

sunday 18

Brian Loney, Brian Box, Julian Bonder, David Gamble, Ron White, R.E. School, Felicia Pava, Tricia Meenan, Milvan Kwon, Andrew Payne, Larry Davis, Rencall Kocum, Charles Weidmann, Robert Leval

loquia 302, 303A, 303B Slocum

ALUMNI NEWS



A Message From the Dean

This past year has been one of reflection, loss and accomplishment for the School of Architecture. In November we celebrated our 125th anniversary as a formal program of study in architecture at Syracuse University with a key-note lecture by Kenneth Frampton, an all-school charrette, and a gala dinner at the Everson Museum. Sadly, only one week later, our former Dean, Werner Seligmann, passed away after a battle with cancer. He is greatly missed, and an endowed lectureship has been established in his honor. In the spring we hosted the visit of the NAAB accreditation team, which resulted in our full five-year accreditation for both the undergraduate (B. Arch.) and first professional graduate (M. Arch.I) degree programs. The year ended with a two-day symposium "On Location" dedicated to current trends in urban theory and practice.

Several other events gained the School considerable press coverage during the year, among them the start of a Community Design

Center and enrolling the largest first year class in recent school history.

In contrast, this coming year is about the future: curriculum revisions, planning for the expansion of the School and creating new publications that will, I hope, launch us into the new millennium with renewal and confidence. We are counting on you, our alumni, to help in the coming years to sustain the quality of the School with your continued professional achievements, your involvement in the life of the School, and with your generous support. We thank you in advance!

Sincerely,

Bruce Abbey, Dean

Fall 1999 Visiting Critics

Five visiting critics in Syracuse this fall taught a wide variety of studio projects to students in their final year of study.

Ted Cavanagh, from the faculty of Dalhousie University in Halifax, Nova Scotia had his studio designing an ocean science research center with a community orientation, next to a historic fort in a coastal town.

Deborah Gans is a partner in the New York City firm of Gans + Jelacic. Her students designed neighborhood units in anticipation of the rapid growth of Chandigarh, India. Each neighborhood sector contained at least one digital pavilion as part of a startup digital industry in the area.

The studio of **James Garrison**, of Garrison Siegel Architects also in New York City, designed a new United States Courthouse for Syracuse. The project focused specifically on the issue of architectural representation.

Marc Kocher, an architect from Zurich, worked closely with Aldo Rossi until his death and is completing a treatise on Rossi's work to be published next year. His studio project was a reconstruction of an inner-city quarter in the historical center of Berlin.

Francisco Gutierrez teaches at the Polytechnic University of Puerto Rico School of Architecture. His studio began by designing a window, to explore the issues of facades, and then designed a dorm for international students on the Syracuse University campus.

Alumni Events 1999-2000

Mark your calendars and plan to join us for one or more of the following events. Invitations will be mailed to alumni in the vicinity of each event in advance.

October 30: **Homecoming Weekend Event at Syracuse:** Football Pre-Game Reception for Syracuse Area Alumni and Returning Alumni
103 Slocum Hall – 2 hours before kickoff

November 17: **Boston Alumni Reception**
5:00 to 7:00 p.m. at "Build Boston" World Trade Center
164 Northern Avenue, Boston
Enter through the Lower Entrance
To register in advance (and avoid having to register on location) call Build Boston 1-800-544-1898 or via website: www.buildboston.com
The Syracuse Reception is event number B-68 and is free of charge
Hosted by Dean Bruce Abbey and Katryn Hansen

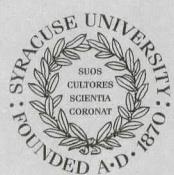
December 2: **Washington DC Reception**
Syracuse University Greenberg House 5 to 7:00 p.m.
Hosted by Dean Bruce Abbey and Professor Christopher Gray

February: **Basketball Pre-Game Reception for Syracuse Area Alumni**
S.U. Carrier Dome – Orange Pack Room
Date and Time TBA Pending Final Basketball Schedule

March 11-14: **Reception during ACSA Conference in Los Angeles**
Date and Time TBA Pending ACSA conference schedule

April 20: **Baltimore Reception**
Ayers Saint Gross
5:00 to 7:00 p.m.

May 4-7: **Reception during AIA Conference in Philadelphia**
Date and Time TBA Pending AIA conference schedule



ArchitectureNews is published by the Syracuse University School of Architecture for alumni and friends of the school.

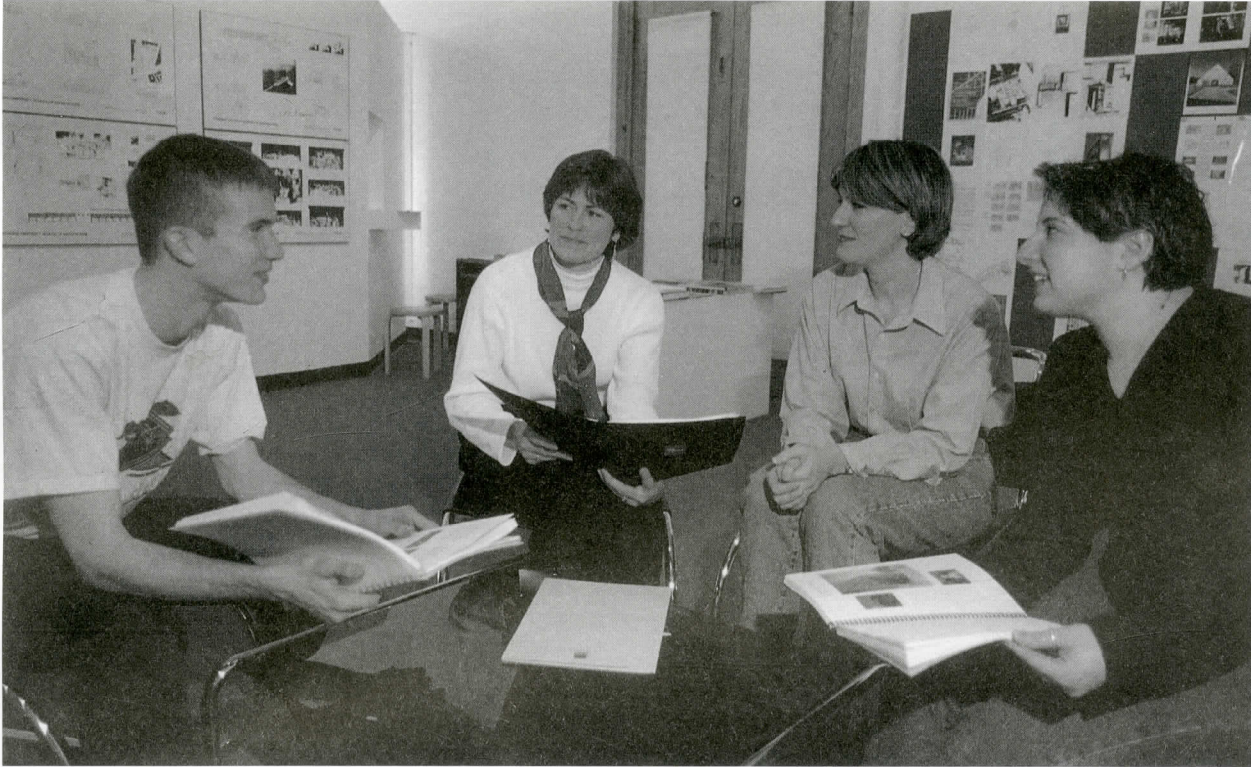
Bruce Abbey, Dean
Katryn Hansen, Assistant Dean, Editor

Bess Collins, Designer
SU Photo and Imaging, Principle Photography

We welcome all comments, contributions, and inquiries, which should be addressed to:

Katryn Hansen, Assistant Dean
School of Architecture
Syracuse University
103 Slocum Hall
Syracuse, NY 13244-1250

SCHOOL NEWS



Sean Gaw, Connie Caldwell, Maria Agostini, Leah Cohen review marketing brochures.

Career Services

The spring 1999 semester was a busy and exciting one for the School of Architecture Career Services office, led by Connie Caldwell, Director of Career Services for the School. Eleven firms were on campus to interview thesis students for full-time permanent positions and other students for summer jobs. Burt Hill Kosar Rittelman, CUH2A, Dagit-Saylor, Einhorn Yaffee Prescott, Ewing Cole Cherry Brott, Hillier, HLW, Payette Associates, Stubbins Associates, Tobey + Davis and The Ritchie Organization each interviewed students in Slocum Hall. Several firms made solid offers to students during the visit; others invited candidates to visit their firms during Spring Break for a second interview. Ashley McGraw, Bohlin Cywinski Jackson, King & King, Clark Patterson, Quinlivan Pierik & Krause and Sear-Brown also requested resumes for screening.

If your firm would like to recruit on campus, you may contact Caldwell by phone at 315-443-4937 or by email at cbcaldwe@syr.edu. She will work with you to develop a screening and interviewing process that meets your needs. Your campus visit can also include a presentation on the work of your firm.

Resume consultation is another service that Caldwell provides to both students and alumni. Active with the AIA Intern Development Program, she is the School's IDP coordinator and has been invited to the annual AIA convention in Dallas to present a workshop on resume composition for interns. If you are interested in a resume consultation, please fax your resume to Caldwell at 315-443-5082, and call or e-mail her with questions about IDP or other services available to alumni/ae and firms.

The Career Services office has established an e-mail distribution list so that job notices received by the School can be easily sent to alumni/ae. The list is also used to do informal salary surveys and pass on other career-related news. To join the list send an e-mail to cbcaldwe@syr.edu.

Community Design

from page 1

The workshop was conducted on Saturday, October 24th, 1998, in the gymnasium of St. Lucy's School near the site. The interaction of the students with the residents was promising and a great deal of progress was made in a short amount of time; by the end of the meeting five proposals were sketched out. The initial ideas that resulted from the one-day charrette were then developed and refined for a public presentation one month later. The students built a basswood site model and created large drawings with plans, perspectives and implementation phases to communicate the five development proposals.

Subsequently, Gamble, together with Pamela Heintz, Director of the University's Center for Public and Community Services, received funding to continue the project from a special fund at Syracuse University called the Vision Fund, which was created to support new and creative learning initiatives. Thanks to this funding, 20 students enrolled in an independent study course in the spring semester of 1999, which allowed them to develop the projects further. Based on the November community meeting and feasibility criteria, two of the original five projects were refined for a March presentation with the residents and the Director of Economic Development for the City of Syracuse. Students then developed a single scheme, which meets both the needs of the diverse community and the tight

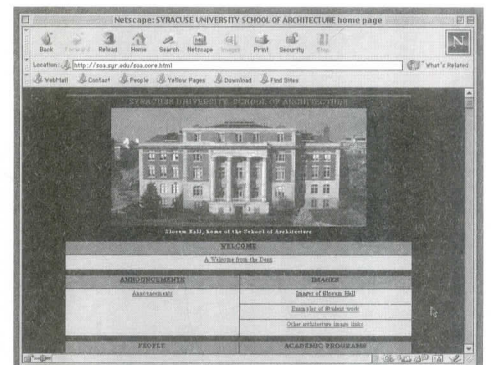
budget. The city sent out a Request for Proposals in late Spring based on the guidelines from the students' drawings and models and believes construction may begin as early as this year.

The partnership between the School of Architecture and the neighborhood is the first of its kind, and university and city officials hope it will pave the way for future collaborations between city neighborhoods and academic departments. Future workshops will include additional students and faculty from other disciplines within the university that deal with issues related to economic development, public policy and design.

The following students participated in the fall 1998 design charrette: Undergraduate: second year – Lasha Brown, Michael Imbergamo, Maggie Kirk, Lee Morrisette, Jeremy Munn, Ben Nicholson, Drew Watkins, Xiao Weng, Jeremy Zuidema; third year – Emily Buttrick, Juan Calaf, Kristen Kavanagh, Jason Lagorga, Audra Manzano, Peter Mattioni, Jeffrey Sipprell, Jason Willard, George Stewart; fourth year – Jonathan Taylor; fifth year – Ron Masotta; graduate - Maria Agostini, Nelson Carvalho, Rebecca Christmas, Joseph Ho, Silas Jeffrey, Maricel Ramos, and Shridhuli Solanki

Visit our website

We welcome visitors to the School of Architecture Website located at <http://soa.syr.edu/soa.html>. In addition to information about school activities, the faculty and our courses, you can also learn about alumni events nationwide, the School Lecture Series, opportunities for giving, and career services. There are also links to related websites, including other Schools of Architecture, as well as Syracuse University Schools and Colleges, the transcript office, alumni relations, and the library system.



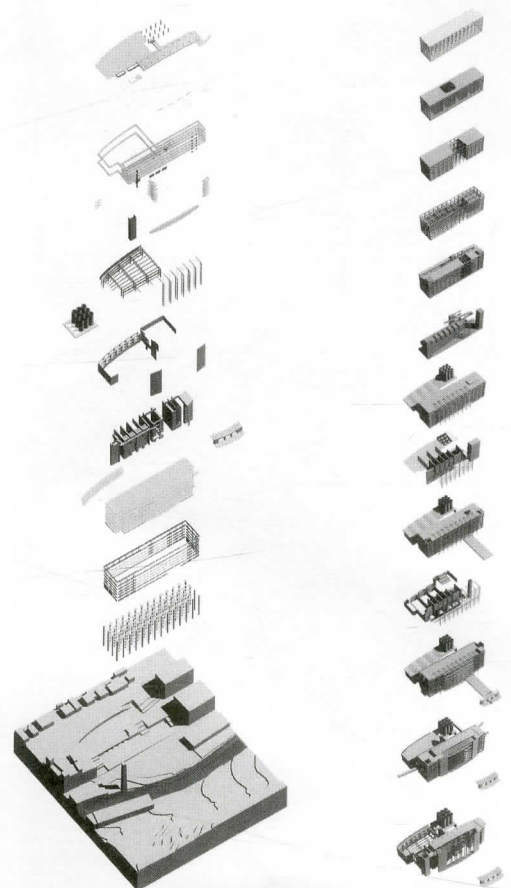
SCHOOL NEWS

1998 Thesis Awards:

James Britton Memorial Awards
Thomas J. Zoli – Best Thesis
Catarina A. Ferreira – Outstanding Thesis
Kerri L. Ferrara – Outstanding Thesis

Dean's Thesis Citations:
Steven J. Beaucher
Robert G. Hegedus
Marc B. Pittsley
Nima Yadollahpur

Thesis Citations:
Anna A. Bokov
Jeffrey H. DeGregorio
Jeffrey M. Dvi-Vardhana
Christopher M. Mignerone
Andrew Pastoriza
Kristin A. Simonson
Marcus M. Wilkes



Superjury Critics for 1998

Deborah Adams
Cornell University

Ann Chaintreuil, *Partner*
Macon Chaintreuil Jensen &
Stark Architects
Rochester, NY, President of
NCARB

Richard Gluckman, *Principal*
Gluckman Maynor Architects
New York, NY

Kent Hubbell, *Chair*
Department of Architecture
Cornell University

Alan Plattus, *Assistant Dean*
School of Architecture
Yale University

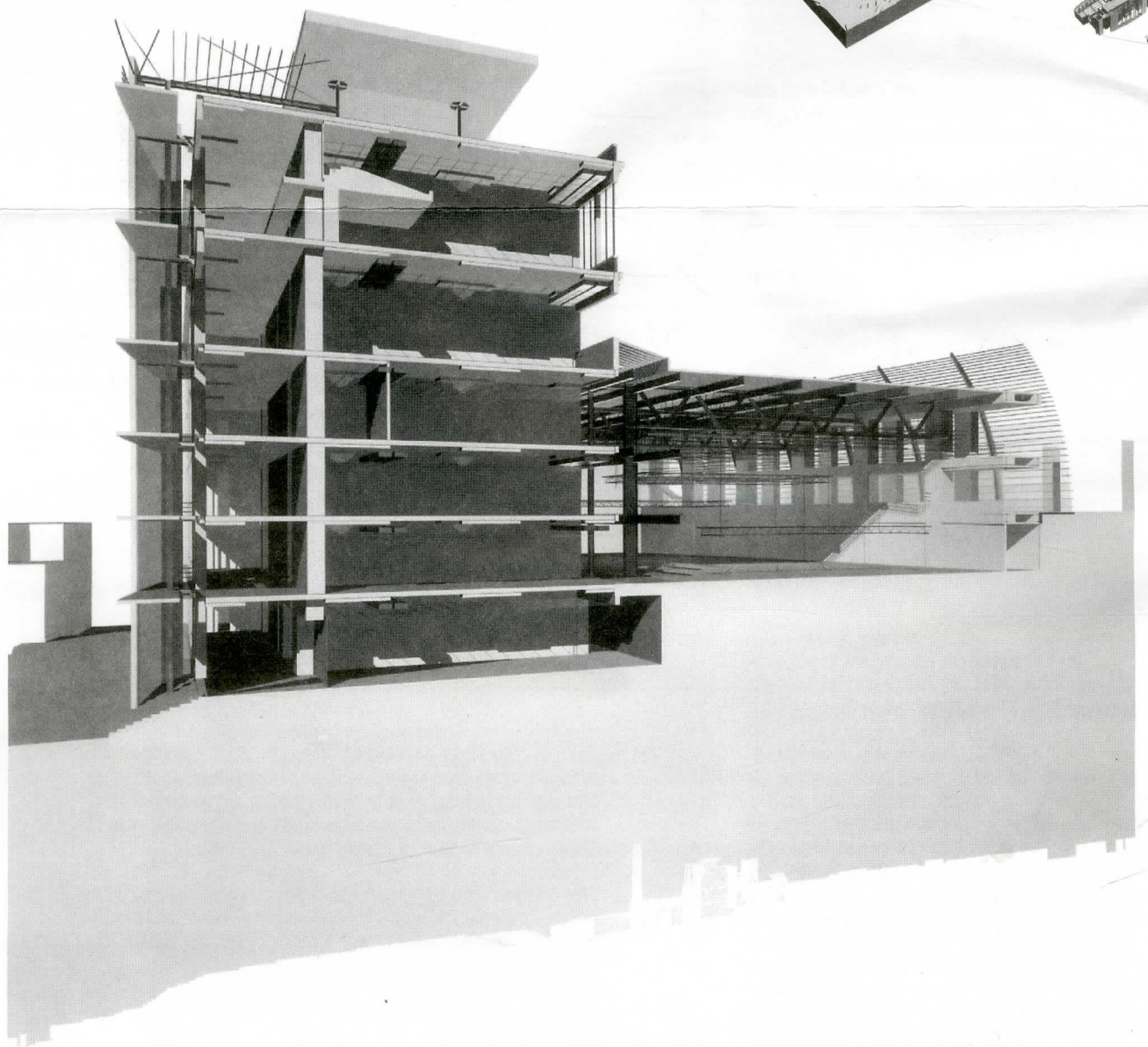
Michael Schwarting,
Professor and Chair
School of Architecture and
Design
New York Institute of
Technology

Mark Shapiro, *Head*
Department of Architecture
Kansas State University

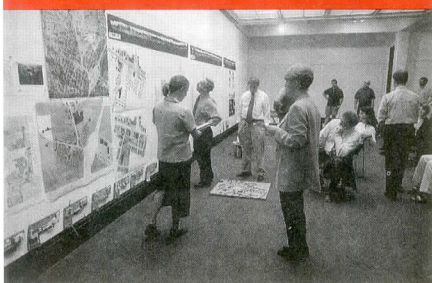
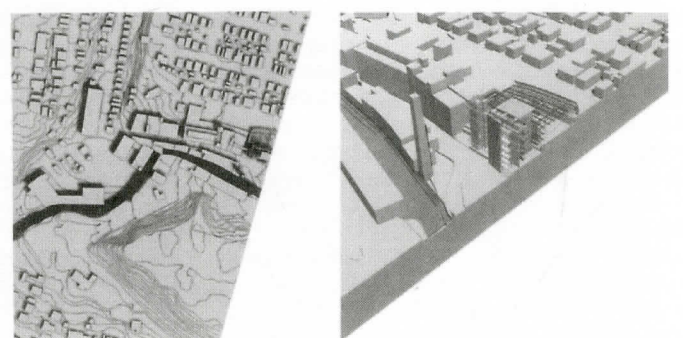
Sylvia Smith, *Partner*
Fox & Fowle Architects
New York, NY

Jerry Wells, *Professor*
Department of Architecture
Cornell University

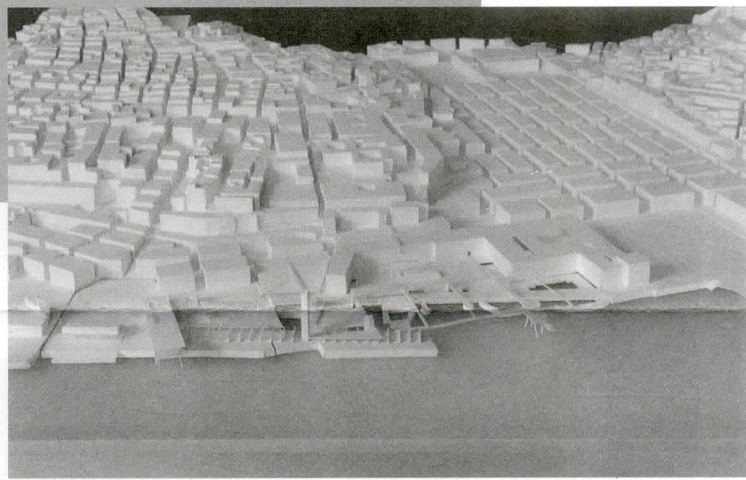
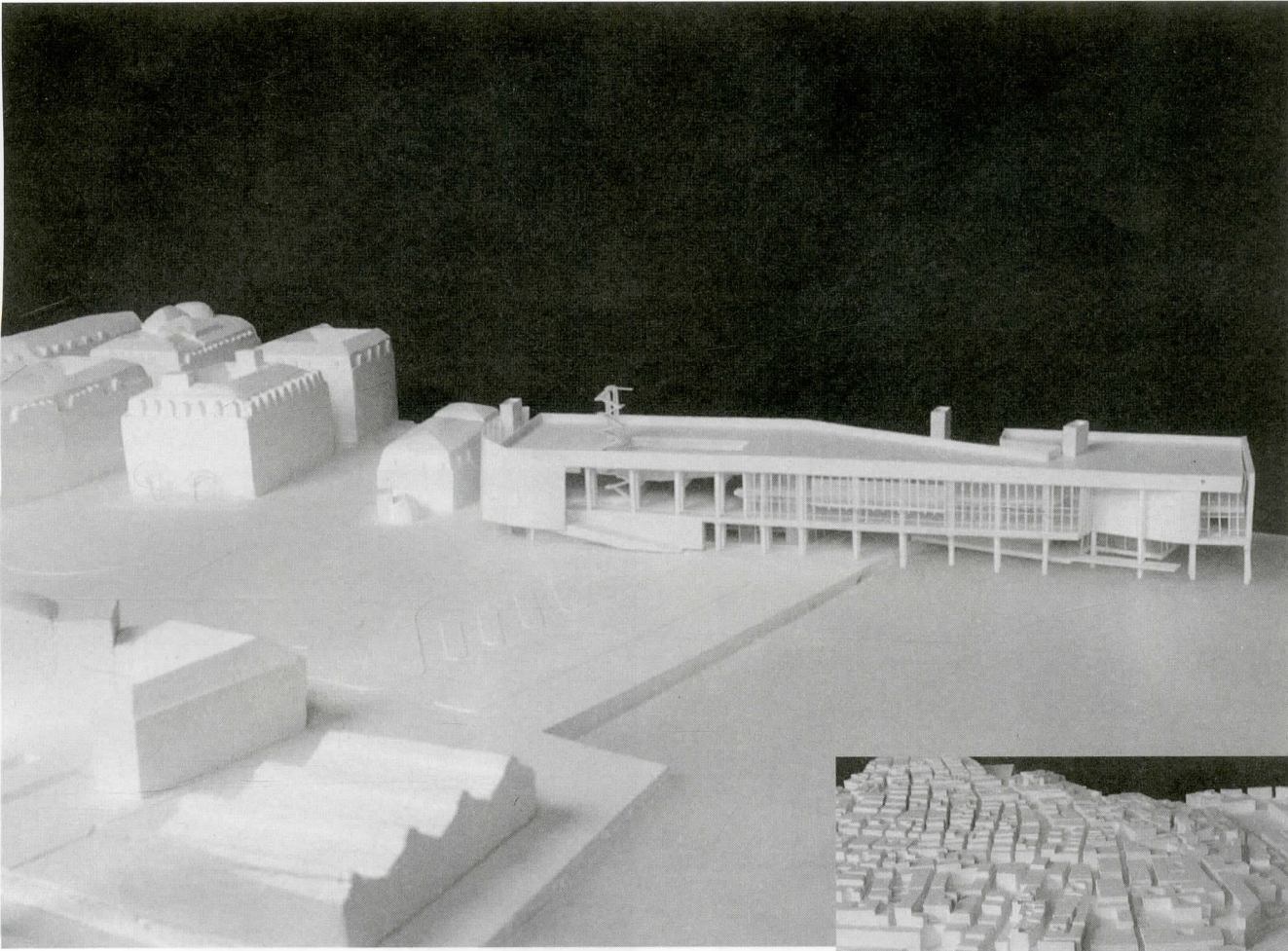
C. William Westfall, *Professor*
School of Architecture
University of Virginia; Head
Designate,
Notre Dame University



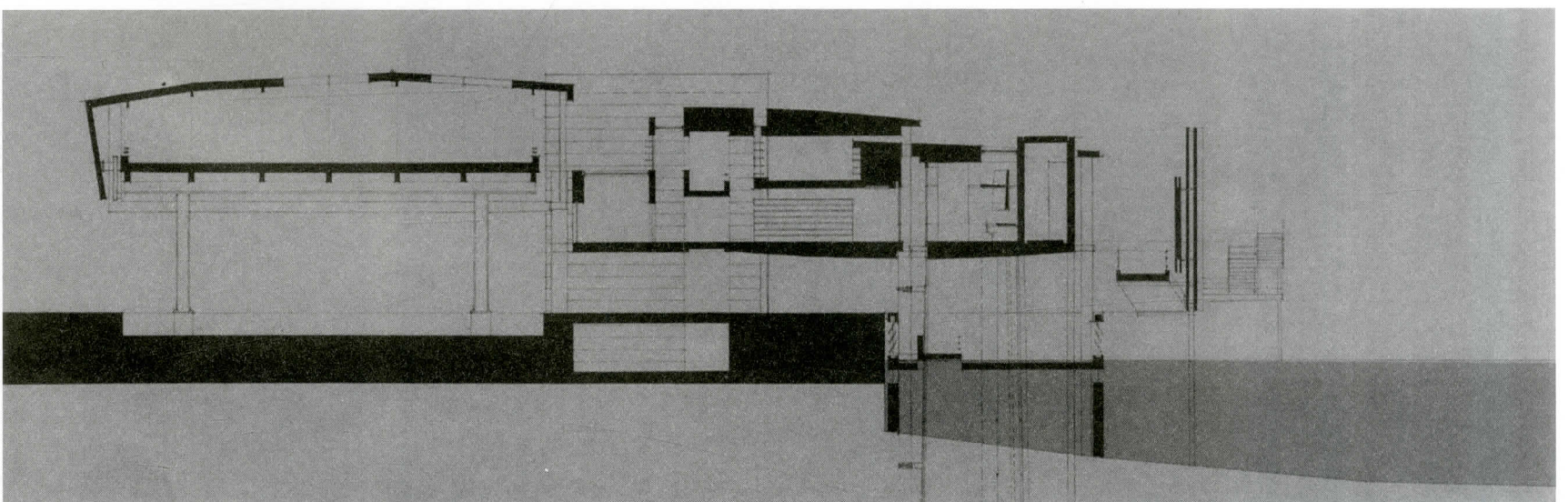
Thomas J. Zoli



Catarina A. Ferreira



Nima Yadollahpur



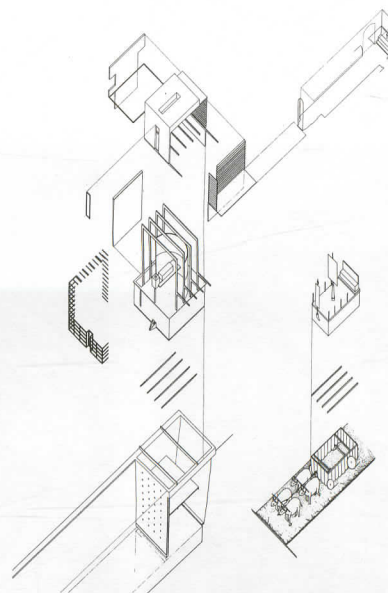
SCHOOL NEWS

1999 Thesis Awards:

James Britton Memorial Awards:
 Yanel DeAngel – Best Thesis
 Gonzalo Diez – Outstanding Thesis
 Ryan Dillon – Outstanding Thesis

Dean's Thesis Citations:
 Christian Daniels
 Amador Pons
 Hans Walter

Thesis Citations:
 Maria Agostini
 Heidi Christianson
 Jason Olsen
 Maricel Ramos
 Ryan Samsa
 Jeff Zynda



Superjury Critics for 1999

Stan Allen, *Professor*
 Columbia University
 Graduate School of
 Architecture, Planning and
 Preservation
 New York, NY

Thomas Barrie, *Associate
 Professor*
 Lawrence Technological
 University College of
 Architecture and Design
 Southfield, Michigan

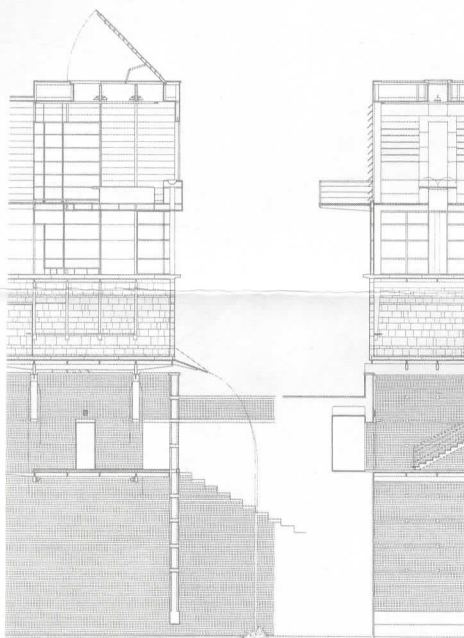
Robert Corser, *Assistant
 Professor*
 Syracuse University School of
 Architecture, Florence, Italy

Jude LeBlanc, *Professor*
 Georgia Institute of
 Technology
 Atlanta, Georgia

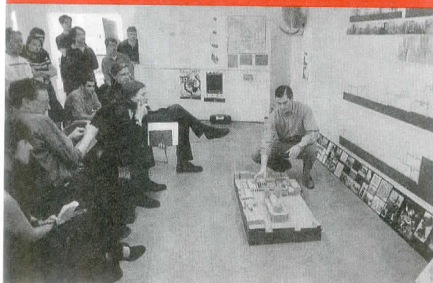
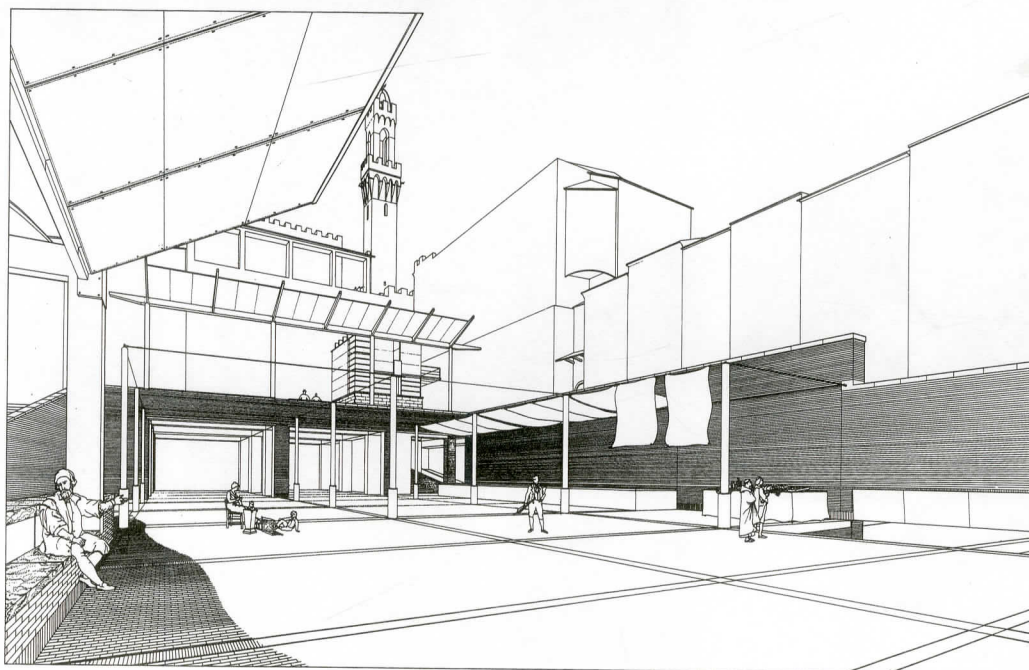
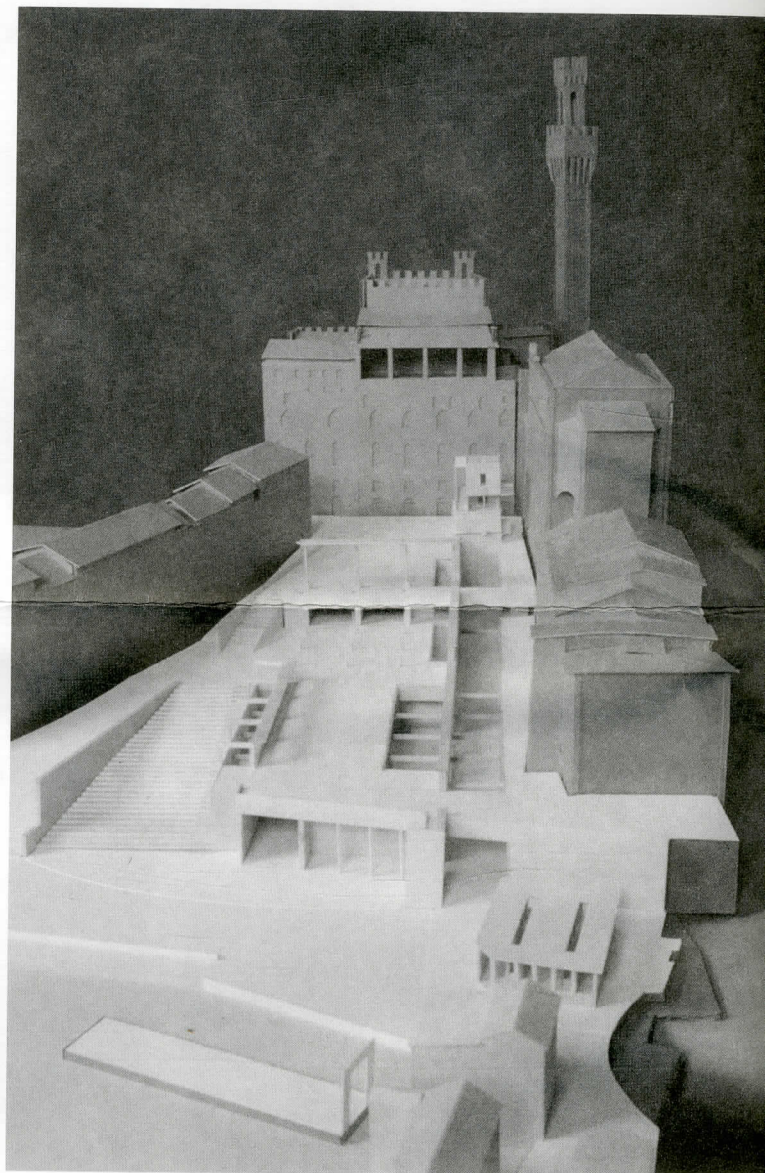
Steven Peterson, *Partner*
 Peterson/Littenberg
 Architects
 New York, NY

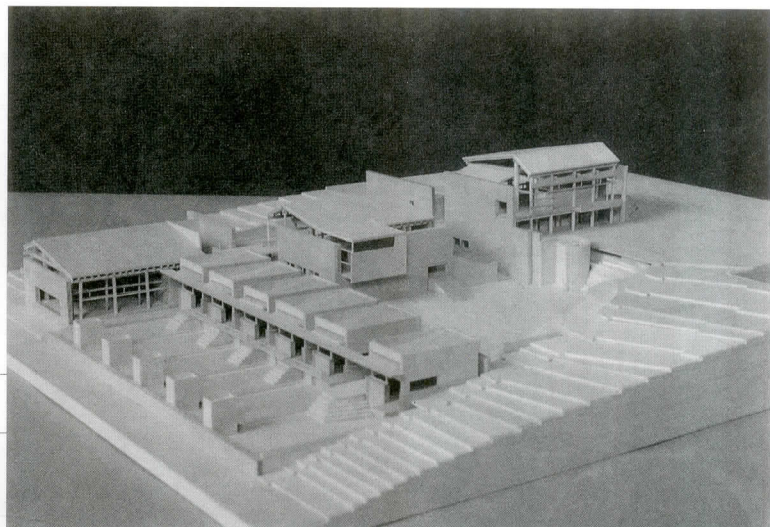
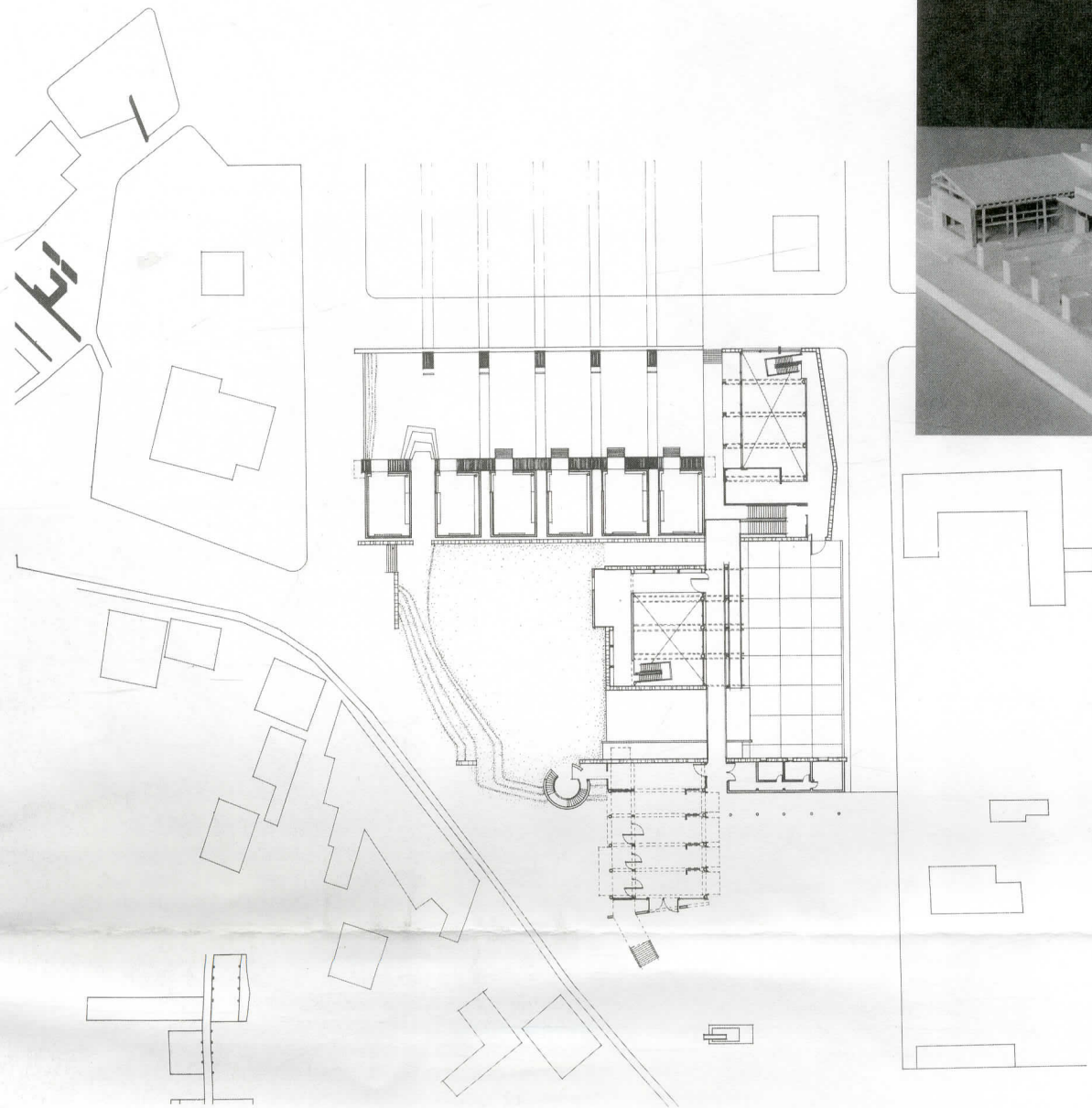
Michael Schwarting,
Professor and Chair
 New York Institute of
 Technology
 School of Architecture and
 Design
 New York, NY

Robert Siegel, *Partner*
 Garrison and Siegel
 New York, NY



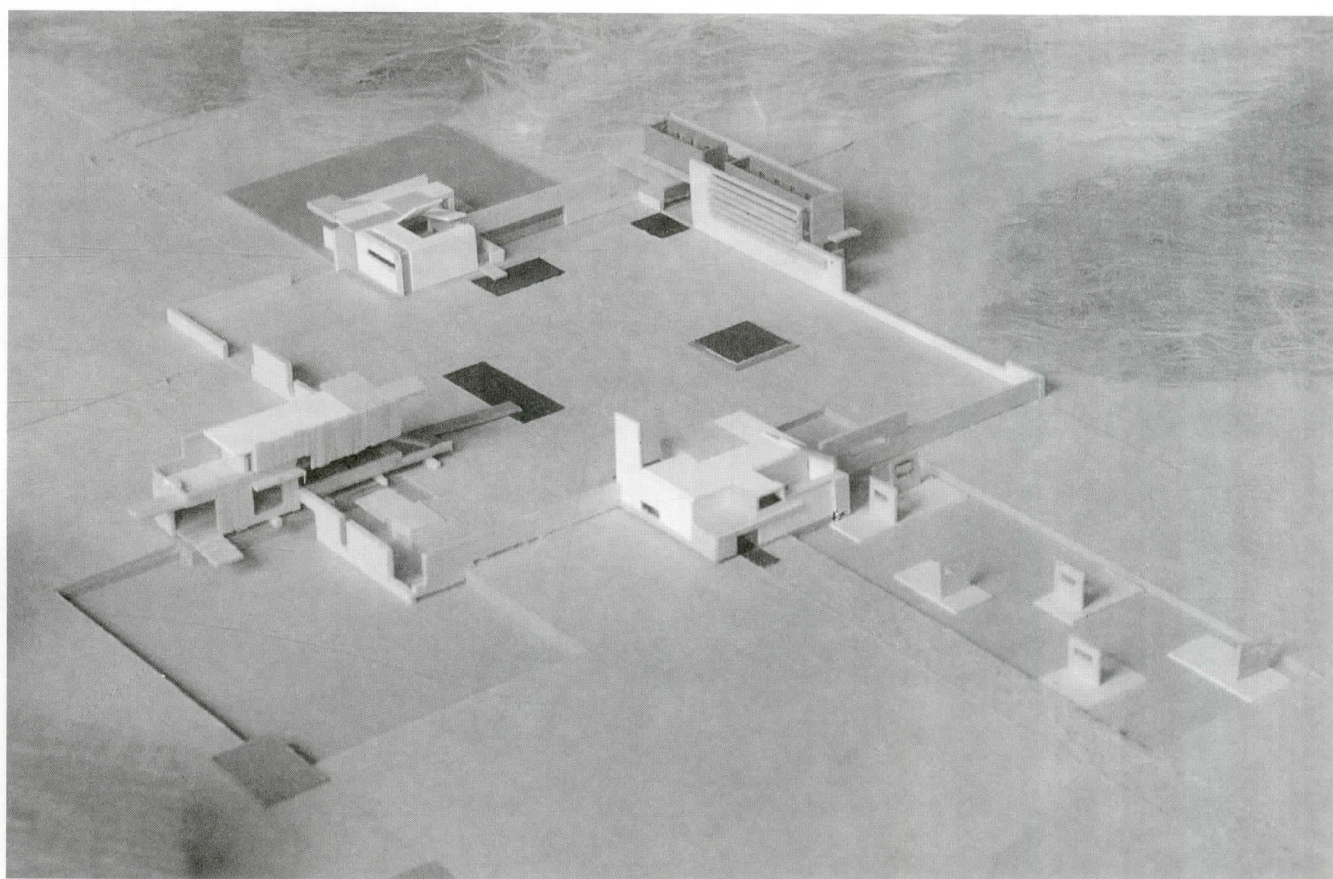
Yanel DeAngel

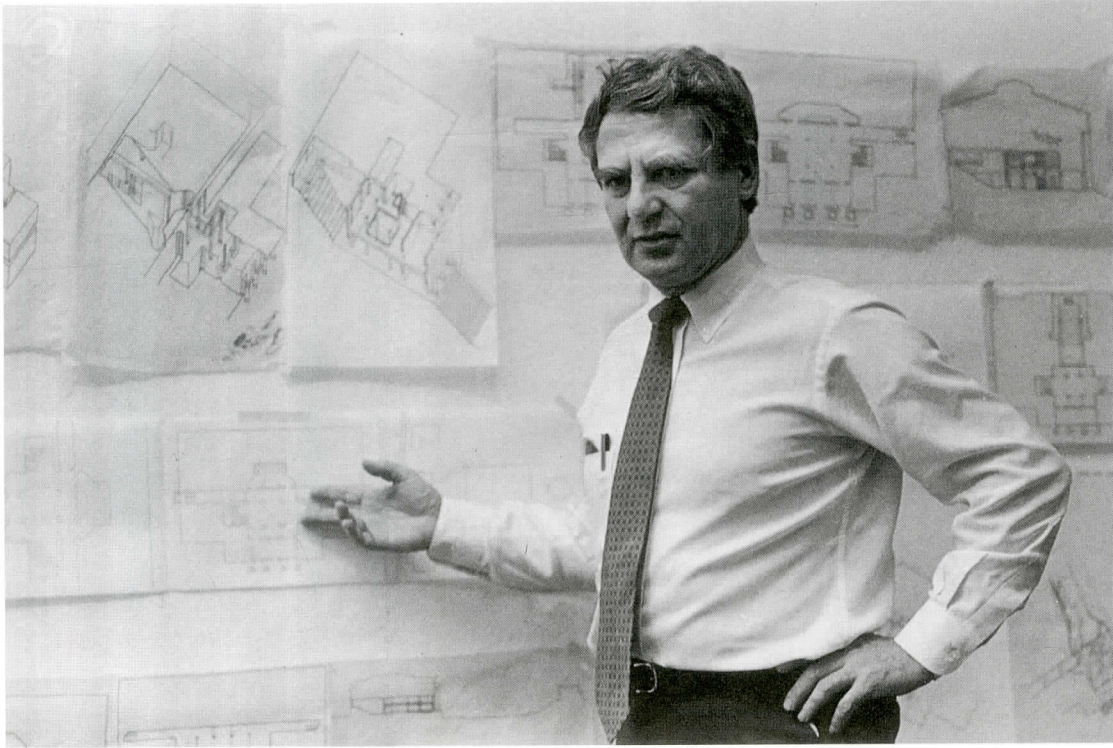




Gonzalo Diez

Ryan Dillon





Clockwise from above:
Werner Seligmann during a
jury, circa 1985. Sketch,
Rosefsky House, Silver Lake,
Pa. Bastille Opera House
Competition, Paris. Willard
Administration Building,
Willard, N.Y.

Werner Seligmann 1930 – 1998

On November 12, 1998, faculty, students, alumni and staff of the School were saddened by the death of colleague, teacher, and mentor, Werner Seligmann, after an illness that lasted less than a year. For more than thirty-five years Seligmann was engaged in an active professional practice while building a distinguished career as an educator and scholar. His passionate enthusiasm, high standards, and boundless energy motivated countless young architects who are now teaching and practicing around the world.

Born in Osnabrueck, Germany, Seligmann was educated at Cornell University and the Technische Hochschule in Braunschweig, Germany. He taught at the University of Texas, Cornell University and at the GSD at Harvard before joining the faculty at Syracuse University in 1976 as professor and dean of the School of Architecture.

He served as dean at Syracuse for 14 years before rejoining the faculty, and in 1992 he was named Distinguished Professor of Architecture. As dean he was widely credited for establishing the reputation of the School on an international, as well as on a national, basis. With his colleagues he re-established two master's degree programs and re-instituted the architectural thesis requirement. The study abroad program in Florence was developed into a significant component of the school and may be considered to be one of his most significant accomplishments.

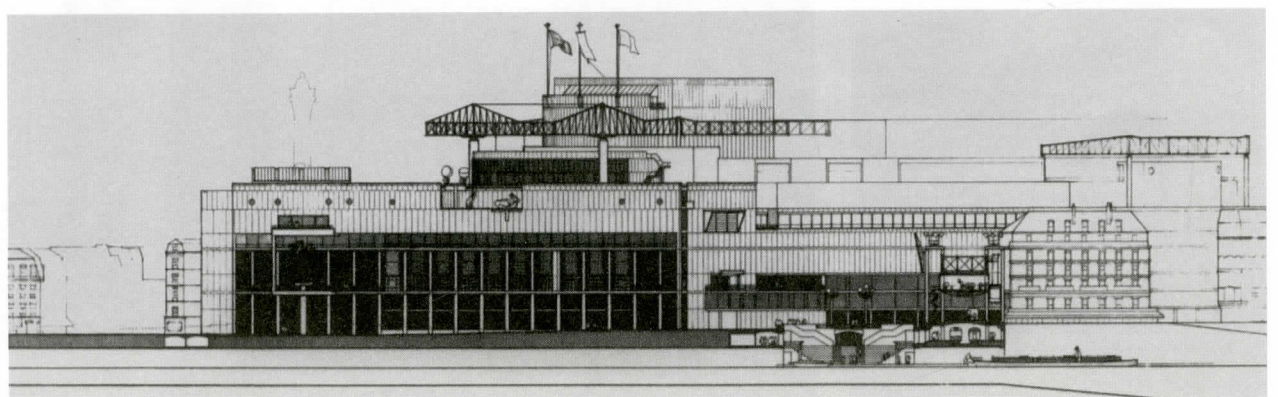
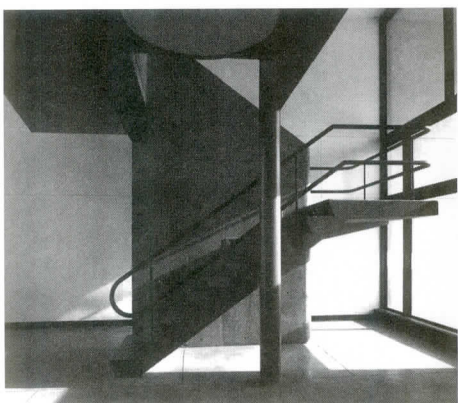
Seligmann held a number of premier guest critic positions at institutions worldwide during his career. He was the Eliot Noyes Professor at Harvard in 1986; the Bishop Professor at Yale in 1987; the Thomas Jefferson Visiting Professor at the University of Virginia in 1994;

and Professor at the ETH in Zurich from 1990 to 1992. In 1998, Seligmann was the recipient of the Topaz Medallion for Excellence in Architectural Education, given by the ACSA and the AIA jointly, for outstanding contributions to architectural education and for his influence on a broad range of students.

Seligmann was also a well-known critic, writer and lecturer, known for his commentaries on European modernism, and he was an expert on the works of Le Corbusier and Frank Lloyd Wright. Besides design, he taught architectural theory and urban design. He was named a Fellow of the American Academy in Rome in 1981.

Throughout his academic career, Seligmann was the principal of an architecture and urban design firm, Werner Seligmann and Associates, which was founded in 1961. In the 1970's and 80's, his work on developing housing prototypes for the New York State Urban Development Corporation established Seligmann's reputation in the area of housing. The work of the firm won two Progressive Architecture Design Awards, was illustrated on the cover of PA three times and placed or won in several national and international design competitions. Among these are projects for the Cardiff, Wales, Opera House, a Holocaust memorial in Berlin, and the Arizona State Historical Museum.

In all of his activities as educator, practicing architect, and scholar Werner Seligmann advanced his belief that architecture, and the teaching of architecture, is a noble profession. His contributions to teaching, scholarship, and the built environment will long be appreciated and valued.



Friends of the School of Architecture Fund

The Friends of the School of Architecture Fund provides the resources for many important programs at the School. Most of the annual contributions made by our alumni and friends are placed into this account, which underwrites our Lecture and Exhibition Series, faculty and student travel and research opportunities, funding for the Architecture Student Organization (ASO), and many other worthy activities at the School.

Your gifts to this fund are critical to the School and to the University. Our operating budget has been frozen for ten years. In order to continue the high quality innovative programming that our students and faculty depend upon, it is vital to maintain and increase giving to the Friends of the School of Architecture Fund. When you receive your annual telephone or mail solicitation from Syracuse University, please remember that you can always designate your giving to the School of Architecture. We rely on your support and thank you in advance for your generous contributions.

Yes, I want to support the School of Architecture with my gift to the following fund:

- | | |
|--|--------------------------------------|
| <input type="checkbox"/> Friends of the School of Architecture Fund | <input type="checkbox"/> \$500 |
| <input type="checkbox"/> The Werner Seligmann Lecture Fund Endowment | <input type="checkbox"/> \$250 |
| <input type="checkbox"/> Louis Jay Masters Scholarship Endowment | <input type="checkbox"/> \$100 |
| | <input type="checkbox"/> Other _____ |
| <input type="checkbox"/> one time gift | |
| <input type="checkbox"/> or a three year pledge | |

Checks should be made payable to *Syracuse University*.

To pay by Visa or Mastercard please provide the following information:

- Visa Mastercard

Account Number _____ Expiration Date _____

Signature of Card Holder _____

Name _____ Year of Graduation _____

Address _____

City _____ State _____ Zip _____

Phone _____ Email _____

For more information on giving to the Friends of the School of Architecture Fund, the Werner Seligmann Lecture Fund Endowment, and the Louis Jay Masters Scholarship, please contact Katryn Hansen, Assistant Dean, School of Architecture, 103 Slocum Hall, Syracuse, NY 13244-1250, 315-443-5078 or kehansen@syr.edu

The Werner Seligmann Lecture Fund Endowment

The School of Architecture has launched The Werner Seligmann Lecture Fund Endowment. Established in memory of the many contributions of former Dean Werner Seligmann, the fund will support a lecture or series of lectures each academic year.

While he was dean of the School of Architecture, Seligmann established the tradition of inviting a broad spectrum of leading architects and educators from around the world to lecture to students and faculty. It was his belief that students benefited by testing their own ideas against new and possibly opposing points of view, and that the influx of new ideas would generate dialogue and debate within the School.

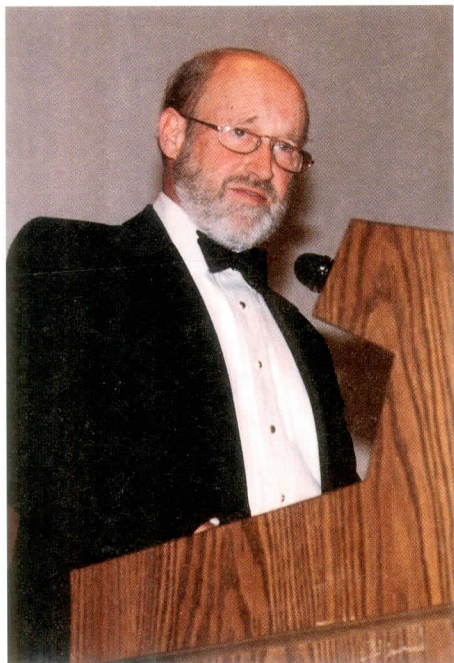
The inception of the fund was announced publicly in June 1999. Although we are making good progress and hope to launch the lectures in spring of 2000, we are not yet close to meeting our goal of raising \$300,000. If you have not yet made a pledge, we ask that you consider making a gift or a pledge at this time.

Louis Jay Masters Memorial Scholarship Fund

In Spring, Louis Jay Masters, class of 1989, passed away at the age of 32. To all that knew him, Louis was a passionate and talented individual. His commitment to the pursuit of architecture and to live his life to the fullest was admirable.

After graduation, Louis joined the firm of RTKL Associates Inc. in Washington, D.C. His talent, dedication, and love of architecture made him an extremely well-rounded and gifted architect. Lou's extensive travel in Europe added to his aesthetic development as an architect and helped to make Lou the unique individual he was.

A small group of Lou's family, friends, and colleagues would like to celebrate his life by establishing a memorial scholarship at Syracuse University. The Louis Jay Masters Scholarship Fund will provide financial support for study abroad. With the generous help of family, friends, colleagues, and fellow SU alumni we can make a lasting contribution that will truly be a tribute to a wonderful, talented individual. Please join in this endeavor.



Bruce Fowle, Chairman of the School's Advisory Committee.

Gifts to the School of Architecture – January 1998 through September 1999

Over \$100,000

The Estate of Louise Woodroffe

\$10,000 to \$49,999 – Society of Fellows and Dean's Circle Gifts

James Britton (Founder's Society)
Beth Maxwell Duncan (Founder's Society)
LEGO Systems Inc. (Peter and Jennifer Eio)

\$2000 to \$9999 – Society of Fellows and Dean's Circle Gifts

Leonard and Edna DuBrul
Bruce and Marcia Fowle
Adam A. Gross
F. Kirk Helm
Mary Margaret Jordan (Founder's Society and Chancellor's Council)
Chester Soling (Chancellor's Council)
Frederick Stelle

\$1000 to \$1999 – Dean's Circle Gifts

Bruce and Linda Abbey
Joanne Arany
Bernard F. Armstrong III
Chase Manhattan Foundation
Richard Cooke
Einhorn Yaffee Prescott (Eric C. Yaffee and Steven L. Einhorn)
Sara Epifano
Neil Frisch
Richard Granoff
The Hillier Group (David E. Chase)
James Jordan
Russell A. and Joan S. King (Society of Fellows)
Judith Kinnard and Kenneth Schwartz
Randall Korman and Cheryl Gressani
Kenneth Landis
Arthur McDonald
Franz Oswald
John and Diana Pearson
Carole Shea
Frank Slingerland
Heinz Tesar

\$500 to \$999

Anthony Ames
T. Ammann
Alan Chimacoff and Joan Girgus
Lenord Cubellis
Virginia Denton
George Eaton
Dietmar Eberle and Karlo Baumschlager
Garrison Siegel Architects (James Garrison and Robert Siegel)
Richard Gluckman
Melissa Weese Goodill
Gary Handel
William and Constance Hershey
Allen and Dr. Tess O. Kosoff
David Piaker
John Piedmonte
Darrel Downing
Rippeteau Jr.

David Rosen
Jeanne Russell
W. Thomas Schaaradt
Paul Scoville
Rudi and Lynn Seligman
Siegfried and Renate Snyder
Oswald and Liselotte Ungers
Norman and Lee Wiedersum
Henry White
Advah and Joshua Zinder

\$250 to \$499

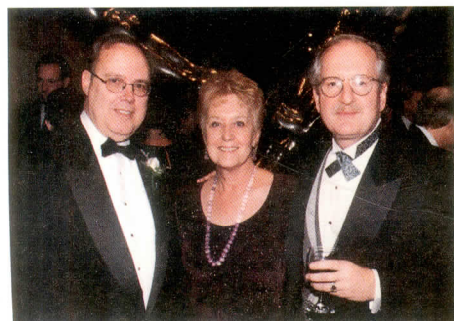
Ronald Armstrong
John Barthold
Richard and Nancy Becker
Theodore L. Brown
Walker Burns
Catherine Claman
David Cunningham
Alfred Dal Pos
Gregory and Jennifer Dembs
Emilio Ferri
Pablo-Luis Figueroa-Sanchez
Gerald Gendreau
Conrad Hamerman
Paul Hanreeder
Jay Haverson and Carolyn Haverson-Weinberg
Robert Hench
Holmes King Kallquist
Anthony Ianniello
Mr. and Mrs. William Jones
Kevin Kautz
Edmund Luzine
Edward Masek
Marvin Mitchell
Lawrence Mitsch
Charles Moore
Richard Moore
Philip Morris Corporation
Hans Nepf
Douglas Olsen
Robert Pfaffmann
Mr. and Mrs. Donald S. Raines
Alex Resch
Steven Rugo
Warner Schmalz
James Schmidt
Carl Schmitt
Annabelle Selldorf
Steven and Nancy Silverstein
Robert Slutzky and Joan Ockman
Samuel Spiegel
Robert A. M. Stern Architects
Dana Stetser
Frederick Webster
Mary Ellen Wheeler

\$100 to \$249

Maarit Alaskewicz
Paul Amatuzzo
Mr. and Mrs. Anthony Amundson
Quentin and Constance Armstrong
David Baker
Kenneth Balzano
Donald Bancroft
Emilio Battisti
John Bednarski
Raymond Beeler
Judy Bell
David and Anne Bell
Barbara Bennett

Gary Beyerl and Dawn Heid
Barbara Bice
Richard and Jean Biddle
Elizabeth Blum and Peter Neitzke
Kenneth Bobis
Dante Boffi Jr.
Richard Bosch and Janet Bebb
Douglas Brown
Ronald Brown
Richard Buchanan III
Joseph Campanella
Sergio Castiglione
Kang Chang
Carmella Charit and Asriel Levin
Grace Chickadonz and Armin Klein
Mr. and Mrs. Edward H. Christopherson
Mrs. John Clements
Andrew Cohen
Geoffrey and Maureen Coon
Randall and Elizabeth Crawford
David Crawley
John Critchley
Mr. and Mrs. Arthur Cutter
Julia Czerniak and Mark Linder
Bared Dabaghian
Gerard Damiani
Norman Davies
Robert Derk
Marcello DiGeronimo
Robert and Melinda Dixon Sr.
Charles Doerfler
Patricia Duncan-Bronz
Peter Duxbury
Mark English
Anabell Felix
Alexander Fernandez
Marc and Nancy Fetterman
Peter Fillat
Joseph and Carolyn Fleischer
Milo Folley
Donald Foster
Robert Gantner
Paul Garbaczski
Daniel Garbowit
Philip Giocondi
James Glavin
George R and Karin Kilgore Green
Donald and Iris Greenberg
Lawrence Greene
Thomas and Claire Grimble
Nancy Grove
Hugh Hallenbeck
Edwin Harrington
Sarita and Bill Hart
Roseanne Hennessey
William Herman
Dennis Hertlein
Hewlett-Packard Corporation
William Hotaling
Mr. and Mrs. William Houghton III
Mr. and Mrs. Richard L. Howland
Mr. and Mrs. Paul J. Hueber
Walter Hunziker
Jeffrey Igoe
Arthur and Marie W. Infanger

Stephen Jablonski
Philip Kaminsky Jr.
Gizana Kassay
Steven Keedle
John Kelly
Peter King
Catherine Knight
A. Steven Krug
David and Gretchen Labau
Wayne LaFrance
Lillian Lee
Mark Leonardi
Joseph Lomonaco
Christine Lozner
Robert Lucas
Paul Lynch
Mr. and Mrs. Kenneth C. MacKenzie
Robert and Elizabeth L. Majewski
Mrs. J. Richard Manier
Laura Mark
James Martino
Hannah McClennen
Cynthia McGahee
Gary McSweeney
Blake Middleton
Frederick Mitchell
Ruth and Ephraim Mizruchi
Rolf and Lois Myller
William Neburka
John Nelson
Mitchell and Lisbeth Newman
Jody Novakovic
Gregory O'Connor
Neal Payton
A. Rockwell Perkins
Cindi and Jay Pila
Polaroid Foundation
Harry and Lori Price
John J. and Mary H. Prucha
Scott Rand
Alice Raucher
Marcia Reutershan
Stephen Rich
Eric Richert
Darrel Rippeteau, Sr.
John Roberts
John and Joyce Robertson
Gary Rosenthal
Christopher Ruehl
Julio SanJose
Carl Saucke
Robert and Lynne Scheer
Peter Schubin
Frederick and Phyllis H. Schwartz
Gary Senf
Donald Sherman
Leigh Sherwood and Elizabeth Gould
Ziangdong and Li Zhu Shi
William and Judith E. Shumaker
Patrick and Sharon Smith
David and Linda Souers
Jack and Jane Squier
Robert Stillings
Donald Strong
Timothy Tam
Stanley Taylor
United Technologies
Wilvan VanCampen
Gershon and Dina Vincow
Nicholas Weremeychik
Daniel Whelan
Douglas Whitney
Albert O. Wilson Foundation



Above: Dean Abbey with Rochelle and Warner Schmalz. Below: Richard Hayden, Pamela Waters, and Vice Chancellor and Mrs. Vincow.

Mark Winkelman
John Wittmann
Donald Wood
David Wurster
Eileen Yankowski
Philip Yocum
Yuan-Sung Yu
James Zak

Up to \$99

Stephen and Susan
Abramson
Tushare Advani
Robert Aikman
Chester Ambler
Kenel Antoine
Mr. and Mrs. Albert H.
Arnold
David and Helen Ashley
Scott Baker
Kathryn B. Barnsley
Edward Barry
Debbie Battistone
Carl Baumann
Suzanne Baumgardt
Jean and Glenn Beach
Philip Bean
Richard and Mary Beebe
Diego Benites
Ruth Bennett
Federico Beulke
Margaret Bezy
Bruce Bloomfield
Mary Boord
Helen Breitbeck
Ansar Burney
Joan and Harold Burstyn
Brian Buttner
Edwin Bynoe
Brian and Carol A.
Campbell
Donald Candy
W. Howard and E. June
Card
Christopher Carley
Thomas Castelein
Michael Cecconi
Ann Chaintreuil
Robert Charron
Chicago Tribune
Company
Lea Ciavarra
Margaret Clark
Timothy Cohen
Richard and Maureen
Colson
Walter and Beatrice
Colvin
Dennis and Amy M.
Connors
Michael Constantin
Julia Craighill
Richard Crandall
George Curry
Sean Curry
Patricia DeLauri
Joel Derby
Robert Dexter
Donald Dickinson
Richard Dillon
Peter Donovan
Leonard and Penny Duke
Robert DuPont
Eli Eisner
James and Marian Emr
Jennifer Faulkinberry
M. Russel Feldman
Ralph and Kathleen A.
Femiani
Patrick Flynn
Peter Follett
Steven Fong
William Foye
Caterina Frisone
Thaddeus and Joyce
Fyda
Joseph Galea
General Electric Fund
Gensler and Associates
Anthony and Mary Gholz
Edmund Giambastiani
Malcolm Goodspeed

Stephen Guest
Christopher Haddad
Evamaria Hardin
John and Deborah
Hathway
Janice Heasley
Paul Hedin
Robert and Eloise
Henault
Charles Higgerson
Krista Hildebrand
Robert Hilson
David Holmes
Jan-Sun and Jung-Soon
Hong
Pierre and Barbara
Hostettler
Joan Humphreys
Myles Hyman
Virginia Jefferis
James Jennewein
Mr. and Mrs. Harry Jewell
B. Dean Johnson
Robert Johnson
Verah Johnson
Leigh Anne Jones
Stephen Juliano
Laura Keenan
Robert Kelly
Kenneth Kerly
Tack Kim
Lawrence and Mary
Klepper
Frederick Knapp
Laura Krekorian
Mr. and Mrs. Albert Krull
Jerry Kurland
James and Peri Kutchin
Thomas LaMere
Donald and Beatrice
Lammers
Gary Lavine
Christopher Leary
Christ Lemonides
Joshua and Heidi Levy
Mr. and Mrs. Kenneth
Lindsay
Bruce Linkov
Michael Long
Sara Lopergolo
Jennifer Luhrs
Randall Luther
Douglas Lyon
John Majoros
Chester and Carole
Malinowski
C. Richard Malm
Paul Malo
Robert Manzano
Anton Maratos
Bernardo Marques
Carol Masotta
Elizabeth McClure
Douglas McClure
William Metzger
Lawrence Minsker
Deborah Morgan
Jon Eric Moss
Robert Muscatello
Bonnie Nault
Wyatt Nelson
Robert Nelson
Lawrence Nelson
Chak Ngamtippa
Vincent and Nancy O'Neil
Eric and Pamela O'Neill
Peter Olney
Jean Orino
John and Betty Ostrom
Patricia Padussis
Michelle Paone
Anthony Paskevich
Lawrence Paugh
Jonathan Perlstein
Daniel Perry
Richard Perry
John and Janet Pertusi
Harry Pettoni
Jessica Pineo
Ricardo Quiterio
Mr. and Mrs. Conrad R.
Remick



Left: The view from the Everson balcony. Below: A program including choral selections by the School's vocal ensemble, was held in the Hosmer Auditorium.

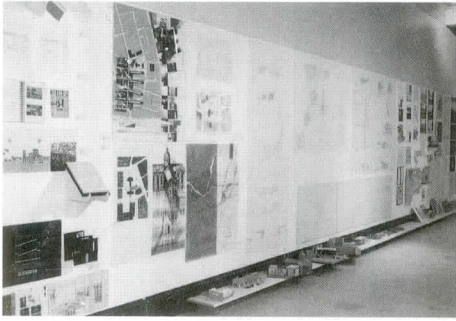
Mark Reynolds
Edward Rice
Susan Riordan and
Donald C. Lisowy
Richard Roberts
George Rodenak
Trevor Rogers
R. Morgan Rolantz
Amber Roth
Richard Rust
Richard Sachs
Peter Salins
Steven and Marilyn B.
Schroeder
Michael Schutzel
Sheri Shaw
Robert Sherman
Rosa Shue
Michael Shurtleff
Robert Sinclair
David Sinclair
Bruce Siska
Richard Slingerland
Mary Ann Smith
Alberto Rodriguez
Sobrinio
Paul and Janice Sonski
Vincent Soper
Joel and Roberta Spanier
Thomas and Jeannine L.
Tayler-Stack
Gerald Takano
David Tatham and Cleota
Reed
Teitsch-Kent-Fay
Architects

Frederick and Phyllis
Thornberg
Michael Tomlan
Paul and Karen J. Travis
Margaret Trembley
Michael Trusa
Fatma Turkan
John Tuteria
Larry and Rosalie
Vanderhoef
Scott VanSweringen
Thomas Wallace
Elizabeth Warner
Neal and Sally Weeks
Peter Willcox
Pamela Williams
Kenneth Williams
Jere Williams
Barry Wood
Matthew Young
Paul Zane
Edward Zelazny
Thomas Zoli



The Chancellor's Council recognizes donors who have given a lifetime total of \$100,000 or more to the university; the Society of Fellows recognizes donors who make annual gifts of \$2,000 or more. The Founder's Society includes individuals who have made a planned gift to Syracuse University in any amount. The Dean's Circle recognizes individuals who make gifts to the School of Architecture of \$1,000 or more. For more information about these groups, please contact Kathryn Hansen, Assistant Dean, at (315) 443-5078 or kehansen@syr.edu.

FACULTY NEWS



Bruce Abbey was the chair of the Canadian Architectural Certification Board (CACB) team that reviewed the University of Montreal School of Architecture for its five-year accreditation in March 1999. Abbey also served on the jury for the 1999 Boston Society of Architects' design awards in Fall 1999.

Laura Auerbach's design as Project Architect at Weintraub and di Dominico for the Queens West Gantry Plaza and Community Park along the East River in New York City has been widely published, including in the *New York Times* Sunday Art and Architecture Section and in *Landscape Architecture*, January 1999.

Bruce Coleman was the featured speaker during a dual-event at the Temple Brith Sholom on September 5 honoring both the 30 year anniversary of the building of the Temple as well as its architect, Werner Seligmann. Coleman, who was a close associate of Seligmann's at the time the Temple was designed and built, gave a talk entitled "The Art of the Synagogue: The Designing of Temple Brith Sholom." Coleman discussed the development of Seligmann's design showing slides of his initial and final ideas for the building.

Lawrence Davis designed the Children's Interactive Gallery at the Everson Museum of Art in Syracuse. The gallery, which was dedicated during a grand opening celebration on November 8, 1999, is designed to acquaint beginning art viewers with the visual arts, and will help visitors to the museum interpret the Everson's collection by engaging in creative activities that teach basic art principles. Its construction is meant to instruct the viewer about the relationship between a building process and the significance of architecture. The project explores the relationship between subject and viewer through both a video projection system and physical openings in the walls which allow visitors to see the interactive station from the exterior of the gallery. Funding for the gallery was provided by the J.M. McDonald Foundation, the John Ben Snow Foundation, Syracuse Rotary Club Inc., and an anonymous foundation. Davis' recent work was exhibited at the Knowlton School of Architecture at The Ohio State University last March and April in a show entitled "between EDEN and SAIS".

J. Francois Gabriel's book *Beyond the Cube: The Architecture of Space Frames and Polyhedra* earned an Honorable Mention in Architecture and Urban Planning from the Association of American Publishers, Inc. for his publisher, John Wiley & Sons Inc. Gabriel was also invited to discuss his book at the Structural Engineers' World Congress in San Francisco last July. A new book, *Principles of Structures*, by Ariel Hanaor, includes a design by Gabriel for a habitable structure derived from pure geometry. The publisher is Blackwell Science Ltd.

David Gamble, Assistant Professor, together with Pam Heintz, Director of the Center for Public and Community Service, were awarded \$24,800 from the 1999 Vision Fund Grant from Syracuse University for the creation of a Community Design Center. The purpose of the Vision Fund Grant is to encourage "visionary, experimental and creative ideas leading to the improvement of teaching and learning." The Community Design Center will be organized around a clinic-based, for-credit workshop offered each semester. The workshop will be an interdisciplinary, collaborative endeavor between Syracuse University academic departments and the City of Syracuse. The course will be comprised of "real-world" projects which involve students, local residents, professional and non-profit organizations, community leaders and public officials in the participation of design, development, public policy and planning proposals. Gamble also had an exhibition in February at the University of Tennessee in Knoxville, School of Architecture of his sketches from travels to Europe.

Richard Jensen has received a grant from the Graham Foundation to complete his book on Clark & Menefee, Architects. The book will be published by Princeton Architectural Press. Jensen's project for an itinerant research laboratory situated in Wood Buffalo National Park, Alberta and Northwest Territories, Canada, is featured in *Digital Architecture: Computer Graphics from 50 Top Designers*. The book is edited by M.S. Uddin and published by McGraw-Hill.

Mark Linder was invited to participate in the concluding panel discussion, "Modern Architecture-An Incomplete Project" at the ACSA SE conference in October at the University of Tennessee at Knoxville. His essay, "Peculiar Autonomy: The Subject of Sculpture" was featured in the

catalog of Charles Long's exhibition in April 1998 at Gallery Sperone, Rome, Italy. Another essay entitled "Wild Kingdom: Frederick Kiesler's Display of the Avant-Garde" was included in *Autonomy and Ideology*, Monacelli Press, 1998, a collection of essays in honor of Philip Johnson that was presented at a conference at Columbia and the Museum of Modern Art in 1996. A book review by Linder of Rosalyn Deutsche's *Evictions: Art and Spatial Politics* was published in the art journal, *Documents* (Spring 1998).

Susan Henderson has edited and written for the January 1999 issue of the on-line journal *Architronic*. The theme of the issue is the impact of Theosophy on architectural developments in the early twentieth century when Theosophy flourished among artists and architects. This issue attempts to suggest its appeal and its influence through a series of case study examples. Professor Henderson's article "J.L.M. Lauweriks and K.P.C. de Bazel: Architecture and de Bazel" explores the work of two early proponents whose teachings and buildings influenced Berlage, Behrens, and Le Corbusier, among others. The issue also includes an article on the Spangen Housing district in Amsterdam designed by Michael Brinkman, written by Ken Lambla; one on the van der Leuw House of Brinkmann and van der Vlugt, by Graham Livesey; and Alfred Willis's survey of the buildings at Krotona, the Hollywood Theosophists colony. The issue is dedicated to the memory of Werner Seligmann whose interest in and knowledge of this period was profound. The issue can be found at <http://arcrs4.saed.kent.edu/architronic/>.

The July 1999 issue of the journal *Housing Studies: The International Housing Research Journal* is a special issue devoted to self-help housing and will include Professor Henderson's article "Aided Self-Help Housing in the Weimar Republic: The Work of Ernst May." Self-help housing has been an ongoing strategy and controversy throughout the twentieth century. It concerns the ability of designers to help the homeless help themselves in constructing their own homes, usually with government-supplied materials and support. Professor Henderson's study investigates an early instance during the heyday of early modern housing programs in Germany of the 1920s.

In addition, Professor Henderson is now book editor for the *Journal of Architectural Education*.

Christopher Gray and **Arthur McDonald** were jurors for the AIA Rochester Design Awards last October. Gray is the Chairman of the Undergraduate Program and was recently elected as Director of the Northeast Region of the Association of Collegiate Schools of Architecture (ACSA).

Patricia Waddy wrote an essay, "Inside the Palace: People and Furnishings," for the catalogue of the exhibition "Life and the Arts in the Baroque Palaces of Rome: Ambiente Barocco" at the Bard Graduate Center in New York, March 11-June 13, 1999; she also served on the Advisory Committee for the exhibition. Continuing her work with the Nicodemus Tessin the Younger Research Group at the Nationalmuseum, Stockholm, she is preparing for publication Tessin's "Traicte' de la decoration interieure." Tessin was Sweden's leading architect in the late 17th and early 18th centuries. He traveled widely throughout Europe, and his keen observations of architecture especially in Italy and France formed the basis of his treatise, which has remained unpublished until now. Professor Waddy has received two fellowships in support of her research in Rome, from the National Endowment for the Humanities and the John Simon Guggenheim Memorial Foundation. In 1998-1999, in Rome, she researched and wrote a study of the architecture of the Palazzo Pallavicini-Rospigliosi (begun for Cardinal Scipione Borghese in 1613) in the seventeenth and eighteenth centuries. This will appear in a book on the palace and its collections to be published in fall 1999. She is also continuing her research for a book to be called "Between Palazzo and Casa: the Del Bufalo Family and Their Buildings in Rome." The Del Bufalo, a family of the lesser aristocracy, owned about a dozen buildings that form the basis for her study of the range of dwellings for the middle to lower strata of Roman society, in the urban and social context of the city; and their complicated family structure provides an armature for the study through the seventeenth century. In spring 1999, she co-chaired sessions at two professional meetings in the United States: "Patron and Image, 1400-1700" (with John Beldon Scott), for the Italian Art Society at the Annual Meeting of the College Art Association in Los Angeles in February; and "Francesco Borromini, 1599-1667" (with Tod A. Marder), at the annual meeting of the Society of Architectural Historians in Houston in April.

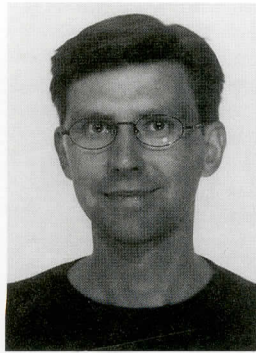
The School became a gallery of work by students and faculty for review by the NAAB team.



Adams



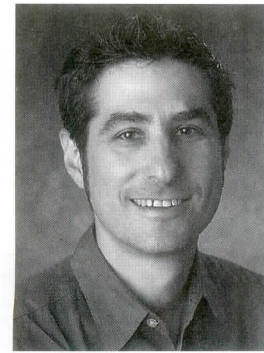
Auerbach



Corser



Foss



Linder

New Faculty

Since 1998, we have welcomed a number of talented and dedicated new faculty to the School of Architecture with an impressive array of credentials and expertise. **Deborah Adams, Laura Auerbach, Rob Corser, and Mark Linder** have accepted tenure-track appointments. **David Gamble** and **Alexander Fernandez Bales**, who were introduced in our last issue, accepted tenure track positions after holding one-year appointments. Joining us for the 1999-2000 academic year is **Martha Foss**.

Deborah Adams received both bachelors and masters of architecture degrees from Cornell University. She is a registered architect in New York State and the Commonwealth of Pennsylvania and has practiced with the firm of Bohlin Cywinski Jackson. She began her own practice in 1998 and her professional work is primarily residential.

Before joining the Syracuse School of Architecture faculty in 1998, Professor Adams held the position of teaching associate at Cornell University. She currently teaches in the first year design studio and offers a seminar in advanced computer applications. Her specialty involves computer-related topics, specifically the implication of the digital environment on modes of representation and the study of the image.

Laura Auerbach earned a Bachelor of Fine Arts from Cornell University and a Master of Architecture from Yale University. She taught at the University of Michigan as a Visiting Assistant Professor from 1995 to 1998, where she held the Walter B. Sanders Fellowship in 1995-1996. She has also been a visiting critic and presented lectures at Cornell University, Rice University, the University of Pennsylvania, and the University of Virginia. She teaches second year design and contemporary urbanism at Syracuse.

Her research concentrates on the postindustrial urban landscape and issues of representation in the public realm. Her most recent work examines new urban paradigms by analyzing, mapping and translating the fragmented urban fabric in Detroit, Michigan. Auerbach received a Graham Foundation Grant in 1996 for a project "Documenting a Multidisciplinary Design Process for the Public Realm". This enabled her to conduct a series of charrettes titled "The Elusive Edge: a search for the threshold of Detroit" and mount an exhibition in the Architecture Gallery at The University of Michigan in December 1996. In addition to her critical and speculative work, Professor Auerbach has organized and participated in a series of community design charrettes for the Southwest Detroit Business Association, "Urban Prototypes", focusing on site identification for redevelopment. She has also participated in various design competitions, entering the semi-finalist round for her work with Peterson/Littenberg on "Berlin: Designing a Capital for the 21st Century The Spreebogen International Competition for Urban Design". Her proposal for the Riverside Park South was exhibited at The Urban Center, Municipal Arts Society in the show titled "New Park; New Ideas, Riverside South Park".

Rob Corser studied engineering at the United States Air Force Academy and the history of art at the University of New Hampshire before attending the University of Virginia, where he completed a master of architecture degree, receiving the AIA School Medal for academic excellence. While at the University of Virginia he taught as an instructor for two courses: Introduction to Architecture and Fundamentals of Design.

Before attending graduate school, Professor Corser worked in the office of a structural engineer and as a building contractor. While in Charlottesville, Virginia he worked with Peter Waldman, Architect on "Parcel-X", a single-family residence featured in *GA Houses* #41 and #51, as well as in *Architecture Magazine*. He was a project designer for the firm Scribner Messer Brady & Wade, P.C. of Richmond, Virginia, where his design for an advertising agency received a 1995 Virginia AIA Design Award. Recently he has worked in San Francisco, California with Tanner Leddy Maytum Stacy, Architects and Paulett Taggart Architects where he was project architect for a variety of housing, educational and commercial projects. Professor Corser is a licensed architect in the State of California.

During the 1998/1999 academic year Professor Corser taught Design Studio and Survey of Italian Architecture in the Syracuse University Program in Florence, Italy. His other academic interests include the relationships between urbanism, design and construction practice, and architecture's basis in craft and tectonics.

After receiving a bachelor of science degree in architecture from the University of Virginia, **Martha Foss** worked as a project architect/designer for Bond Comet Westmoreland + Hiner Architects of Richmond, Virginia. One of her projects was an addition to a house which had been featured on the cover of the March 1959 issue of *Progressive Architecture*; the addition which she designed received a 1998 Virginia AIA Honors Award. She was also the project architect and designer for numerous renovations and additions to school buildings throughout Virginia. During this time she was active in the Richmond community as a tutor and mentor in the city schools.

Professor Foss earned a master of architecture degree from Yale University, where she became a teaching assistant for an introductory computer modeling class, teaching FormZ, Photoshop, and Pagemaker. She also was a teaching assistant for the Yale Building Project, in which the First Year Design Studio designed and built a low-income house.

Mark Linder teaches design, theory and criticism. He received degrees in architecture from the University of Virginia, Yale, and most recently, Princeton, where he was awarded his Ph.D. in 1998. He has taught at the Georgia Institute of Technology, the University of Illinois-Chicago, Rice University, the Rhode Island School of Design, and the Harvard Graduate School of Design.

Linder's research concentrates on twentieth century American architecture, with an emphasis on its intellectual and cultural influences. His most recent work examines the interaction of art and architectural criticism in the 1960s and the resulting incorporation of art practices into architectural design pedagogy. He has lectured throughout the United States and has participated in numerous symposia and conferences, including "After Urbanism" at the Graham Foundation in Chicago (1995) and "Open and Closed Representation" at the University of Pennsylvania (1995). His publications include contributions to the books *Strategies of Architectural Thinking* (1992) and *Autonomy and Ideology: Positioning an Architectural Avant-Garde in America* (1997). His articles have appeared in *AA Files*, *ANY*, *Architecture + Urbanism*, *Assemblage*, *Documents*, and the *Journal of Architectural Education*. He is the editor of *Scogin, Elam and Bray: Critical Architecture/Architectural Criticism* (1992). He has also written catalogue essays on the work of the artist Charles Long (1998) and Chris Garofalo (1997).

ALUMNI NEWS

Emeritus Professor **Paul Malo** (B. Arch. '55) is completing a substantial book which he has co-authored with Robert Engel and Howard Kirschenbaum, entitled *Santanoni: From Japanese Temple to Adirondack Great Camp*. The book will be published by Adirondack Architectural Heritage in late 1999 or early 2000, assisted by a grant from the Kaplan Foundation. Santanoni is one of the Great Camps of the Adirondacks, as they are known, and is owned by the State of New York. The book is integral to a campaign for preservation, restoration and maintenance of the historic buildings on the site in Newcomb, New York. Malo will have a review article and two reviews appearing in the next three issues of the *International Journal of the Classical Tradition*, to which he is a regular contributor and referee for submissions. Along with these significant accomplishments, Malo was honored with a "Pillar of New York" award from the Preservation League of New York State at a luncheon on October 5 at the Waldorf-Astoria in New York City, in recognition of his contributions to the preservation of historic buildings of New York State. He served two terms as president of the Preservation League of New York State and has been active in campaigns to save landmark structures of the Adirondacks and elsewhere.

Peter Salins (B. Arch. '61) is Provost and Vice President for Academic Affairs, and President of the Research Foundation for the SUNY System Administration, rather than interim provost at SUNY Albany as noted in our last newsletter.

The Hillier Group has announced that **David Erik Chase** (B. Arch. '64) is now its Chief Executive Officer. With 20 years experience as founder and owner of his own architectural and engineering firm, Chase began his tenure with Hillier in 1996 as president of The Hillier Group, Pennsylvania.

Ashley McGraw Architects has announced that **Robert Haley** (B. Arch. '69) has joined the firm as Director of Design. With 30 years of experience in master planning and new construction, he has designed libraries, educational and corporate facilities and has also designed many landmark and award winning buildings in Syracuse and throughout New York State.

Darrel D. Rippeteau Jr. (B. Arch. '73) of Rippeteau Architects is pleased to announce that the firm received a 1998 AIA Pro Bono Publico Award for the Duane Rath House Whitman-Walker Clinic in Washington. The jury noted that "the combination of 'first class' design and fundraising for a community based service was truly commendable".

Mark Warner (B. Arch. '73) has formed a company together with his wife Ellen Warner, called Ageless Design, Inc. Located in Jupiter, Florida, the firm consults with and counsels those in all areas related to healthcare and healthcare design. Warner is a national speaker on the subject of design that recognizes the specific demands of age-related conditions, and has released his first book entitled "The Complete Guide to Alzheimer's-Proofing Your Home", published by Purdue University Press. For more information visit their website at <http://www.agelessdesign.com>.

Haverson Architecture and Design PC, headed by **Jay Haverson** (B. Arch. '78) and **Carolyn Weinberg-Haverson** (B.S. CHD, '78) is engaged in a number of new projects including New Roc City, a 450,000 square foot retail and entertainment center in New Rochelle, New York.

The firm is also at work on the third Motown Cafe, located at CityWalk, Universal Studios in Orlando, Florida. Recent honors include a 1997 Connecticut AIA Award for Mediterraneo, a modern, nautically themed restaurant in Greenwich, Connecticut.

James A. Wilson, AIA, (B. Arch. '79) has been named president of the Philadelphia-based architectural, engineering, interior design and planning firm of Ewing Cole Cherry Brot. Wilson joined the firm after graduating from Syracuse University. Over the past 20 years, he has held a variety of positions there — from project architect and manager to design studio director and vice president of operations. He became a partner in 1988. From its offices in Philadelphia, PA, and Washington, DC, Ewing Cole Cherry Brot designs buildings for institutional, corporate and public sector clients nationwide. The 250-person firm, which is actively recruiting Syracuse University graduates, has special expertise in the design of health care, research and development, and sports and entertainment facilities.

Gregory Stanford (B. Arch. '81) was recently promoted to Senior Associate at Brennan Beer Gorman Monk/Interiors.

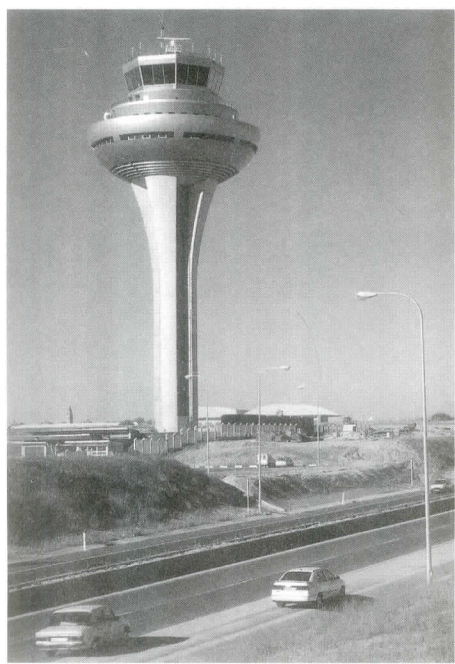
Nina Monastero (B. Arch. '82) has announced the opening of Monastero and Associates, Inc., an architecture and interior design firm in Cambridge, Massachusetts.

Mark Robbins (M. Arch. II, '82) has been named the Director of Design of the National Endowment for the Arts in Washington. Prior to this appointment, Robbins was Curator of Architecture at the Wexner Center for the Arts and Associate Professor at The Ohio State University. In announcing the appointment, NEA Chairman Bill Ivey stated that Robbins "will lead the Arts Endowment in strengthening the presence of design in this country and increasing awareness that design is an essential part of daily life". Robbins is an artist, curator and teacher trained in architecture, anthropology and film. He is the recipient of many awards, including the Rome Prize from the American Academy in Rome, and fellowships from the New York Foundation for the Arts, the Graham Foundation, and the State Arts Councils of Ohio and New York.

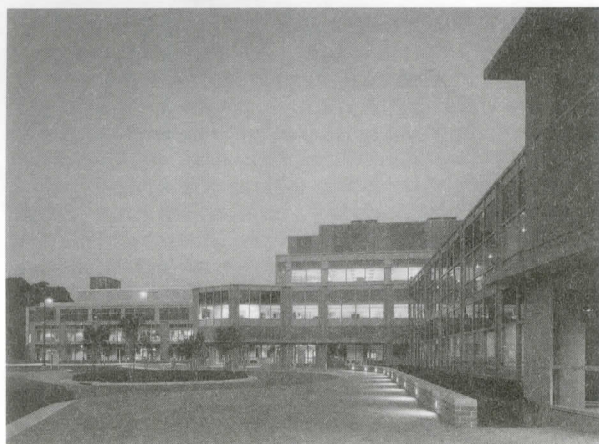
David L. Swartz (B. Arch. '82) received a 1998 Young Architect Award, which was presented to him during the AIA National Convention in San Francisco in May 1998. The award is made to individuals who, in an early stage of their architectural career, have shown exceptional leadership in design, education and/or service to the profession. The jury noted that Swartz is "an architect in pursuit of mastering the details of architecture, challenging architects to understand the technology of the buildings they create. A most gifted, technically competent designer."

Stephen Altherr (B. Arch. '83) has recently joined the firm of Burt Hill Kosar Rittelmann in Pittsburgh, Pennsylvania. He is currently project designer of a 650,000 square foot operations center for Mellon Bank in Pittsburgh. Altherr recently left Bohlin Cywinski Jackson, where he worked since 1987. He was project manager and co-designer of the Emerson Activities Building at Elmira College in Elmira NY. That project received an honor award from the Pennsylvania Society of Architects in 1997.

King & King Architects has announced the promotion of two Syracuse alumni, **Eric W. Witschi** (B. Arch. '83), and **Kirk W. Narburgh** (M. Arch. '90), to the position of Associate.



Bruce Fairbanks control tower, Madrid/Barajas Airport, Spain



A project by James A. Wilson



Stephen Altherr's award-winning building at Elmira College in Elmira NY.

A. Stevens Krug (B. Arch. '83) has joined the architectural and engineering firm of Nave, Newell & Stampfl, Ltd., in King of Prussia, Pennsylvania, as principal-in-charge of the Building Services Group. Previously Krug was in partnership with Wiederspahn Krug Architects in State College, and is an adjunct professor at The Pennsylvania State University. Most recently he was vice president for L. Robert Kimball and Associates in West Chester, Pennsylvania. Nave, Newell & Stampfl, Ltd. is a 90 person architectural and engineering firm.

Bruce Fairbanks (B. Arch. '85) was the architect of the new control tower for the Madrid/Barajas Airport in Spain, which came into operation in spring of 1998.

Scott U. Walls (B. Arch. '85) is executive vice-president of Bergman, Walls & Youngblood, Ltd., a firm which specializes in the field of casino resort architecture in Las Vegas, Nevada. Walls has been employed by the firm since soon after his graduation from Syracuse. During the past four years, he has been the architect of record for the expansion of the Caesar's Palace property in Las Vegas.

Richard Kahn (B. Arch. '86) is now a senior project architect with The Hillier Group in New York. He was previously employed at Berzak Gold.

Richard Rosa (B. Arch. '88) has received the 1998 Rome Prize in Architecture. The Rome Prize is considered by many to be the most prestigious award in classical studies and the fine arts. In addition to his education at Syracuse, Rosa is an alumnus of Harvard University. He has taught at the University of Virginia and at Harvard. He has worked for Frank Gehry and has won numerous awards in architecture and painting. While in Rome, he plans to study the visible effects of the process of building and erasing. His study concentrates on the archaeologically decipherable horizontal plates of both natural and built form that comprise the latent substructure of the city. Rosa also won an honorable mention in the 1998 Steedman Fellowship competition for recent architectural graduates. The Steedman Fellowship is sponsored by The Washington University in St. Louis.

Kathryn (Bengtson) Barnsley (B. Arch. '89) announces the establishment of Barnsley O'Toole Architects, with her business partner, Martin O'Toole. The firm is located in Bowral, a country town 100 kilometers south of Sydney, Australia, and concentrates on commercial, recreational and residential projects including medium density housing both in regional areas across the state of New South Wales, and in Sydney.

Laura Carlson (B. Arch. '89) is a ten-year member of the Hillier Group and has recently been promoted to Senior Associate. She is an architect in the firm's Science and Technology Studio.

James A. McMullan (B. Arch. '90) was recently promoted to Associate at the firm Brennan Beer Gorman/Architects. A registered architect in New York and New Jersey, McMullan is a member of the AIA as well as the National Trust for Historic Preservation.

Scott Erdy (M. Arch. '90) and partner David McHenry have opened a new firm, Erdy McHenry Architecture in Haddonfield, New Jersey, <http://www.em-arc.com/>. Erdy was formerly director of design for The Hillier Group's Philadelphia office. Recent work includes the Southern

Poverty Law Center in Montgomery, Alabama, which was completed in collaboration with Hillier, and the Suburban Cable Retail Prototype project. Erdy McHenry Architecture was featured in the July 1999 issue of *Architecture Magazine*; the "On the Boards" section is titled "The Next Generation" and focuses on the work of two young firms.

Melissa Weese Goodill (M. Arch. II '92) has won the 1999 Gabriel Prize. The prestigious prize is awarded annually by the Western European Architectural Foundation for the pursuit of critical research on aspects of French architecture between 1630 and 1930. Weese, who teaches at the University of Maryland School of Architecture, will concentrate her research on the phenomenon of the *passage*, or commercial arcade, in France. Her research will analyze different aspects of the *passage* such as its vertical surfaces, its relationship to movement and sequence, its expression of the ritual of commercial exchange, and its function as an urban element.

Andrew Thurlow (B. Arch. '94) is Assistant Professor at the College of Architecture and Design at the University of Tennessee in Knoxville. Thurlow earned a Masters at Columbia University in 1998, after working for Ballinger in Philadelphia for a number of years.

Karin Varnik (B. Arch. '94) was awarded a Fulbright Grant to study architecture in Estonia. The theme of her proposal is 'Prosperity and the patriotic momentum of the turn of the century in Tallinn' and will focus on the turn of this past century when the heightened spirit of nationalism influenced both the style of building as well as the shaping of the urban plan. Further research will then investigate the state of the country today, again newly independent and facing a new century, and the influences of technology, economics and patriotism on its current architectural landscape.

Heather Mitchell (M. Arch. '95) is now a corporate associate of The Boudreaux Group in Columbia, South Carolina. She is also President of the AIA/Greater Columbia chapter and is active with a number of civic organizations.

Matthew Burgermaster (B. Arch. '97) received an honorable mention in the 1998 Steedman Fellowship competition for recent architectural graduates. The Steedman Fellowship is sponsored by The Washington University in St. Louis.

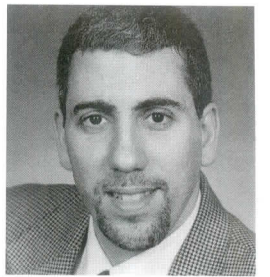
Brian West (B. Arch. '97) is pursuing graduate studies at the University of Pennsylvania in the School of Fine Arts, in the program on City Planning. West has been awarded a HUD Community Development Fellowship in support of his studies.

Jill Morgan (B. Arch. '98) has joined the Auburn, New York firm Beardsley Design Associates. She will be part of the design team for the 1999 capital construction project for the Webster School District.

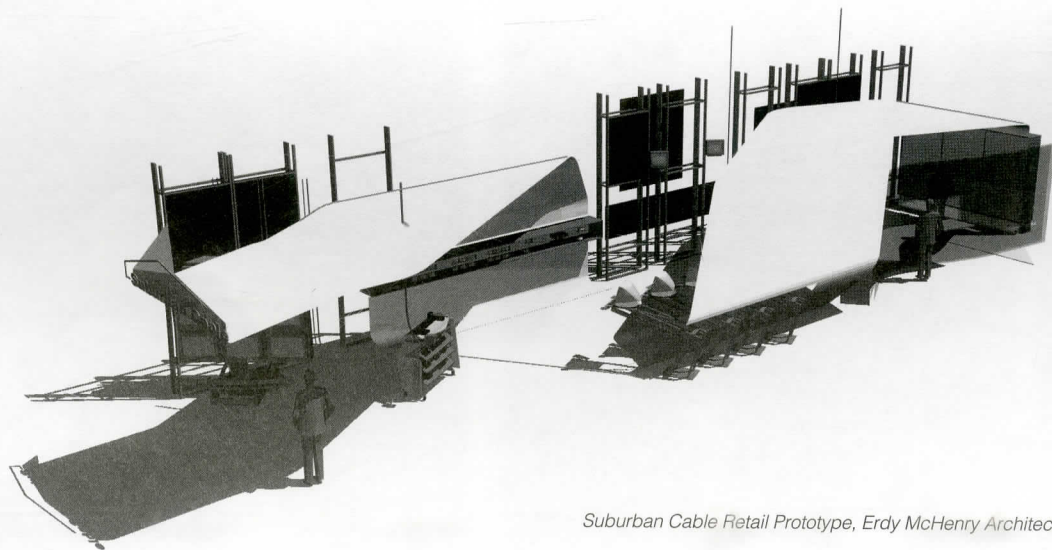
Jayesh Hariyani (M. Arch. II, '99) and his wife Bindu Hariyani won a Commendation Award for Private Residential Building under the South Asian Architecture Architect of the Year Awards program. Their entry in the Residential Project category of this international competition was a private residence at Bhavnagar.



Kathryn Barnsley



Richard Kahn



Suburban Cable Retail Prototype, Erdy McHenry Architecture.



Caesar's Palace in Las Vegas - Scott Walls

**SCHOOL OF ARCHITECTURE LECTURE SERIES
FALL 1999**

September 22	Ted Cavanagh "Conventional Construction(s)"	Associate Professor, Dalhousie University School of Architecture Halifax, Nova Scotia
September 29	Francisco Gutierrez "On Indifference"	Lecturer, New School of Architecture Polytechnic University of Puerto Rico
October 6	Marc Kocher "The Reconstruction of Berlin: Drawings and Projects"	Architect, Zurich, Switzerland
October 13	Deborah Gans "Roy's Shaver"	Partner, Gans + Jelacic Architects New York City
October 21 (Thursday) 7:00 p.m., SUNY ESF	Arthur Edwin Bye "Some Moods in the Landscape"	Landscape Architect
October 27 7:00 p.m.	Robert Winter "The Art and Architecture of the Bungalow in Southern California"	Professor of the Arthur G. Coons History of Ideas, Emeritus
November 3	Demetri Porphyrios	Visiting Professor, Yale Architect, London
November 17	Lawrence Davis "Between Eden and Sais"	Assistant Professor, Syracuse University School of Architecture

All lectures are on Wednesdays at 6:30 p.m. in 108 Slocum unless otherwise noted.

The Children's Interactive
Gallery at the Everson
Museum in Syracuse by
Assistant Professor
Lawrence Davis. The gallery
is designed to acquaint
beginning art viewers with
the visual arts, and will help
visitors to the museum
interpret the Everson's
collection by engaging in
creative activities that teach
basic art principles.



BRANTLEY CARROLL

SCHOOL OF ARCHITECTURE
SYRACUSE UNIVERSITY
103 SLOCUM HALL
SYRACUSE, NEW YORK 13244-1250