

Syracuse University

SURFACE

Architecture Senior Theses

School of Architecture Dissertations and
Theses

5-1984

Thesis Board by John Berger

John Berger

Follow this and additional works at: https://surface.syr.edu/architecture_theses

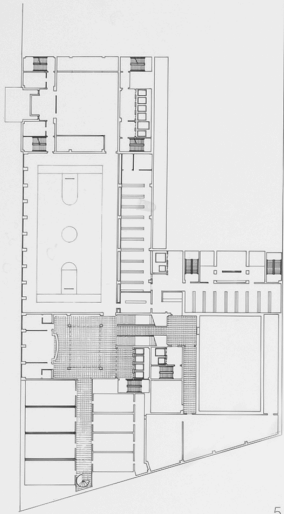


Part of the [Architecture Commons](#)

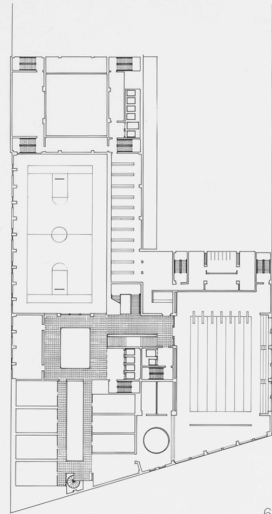
Recommended Citation

Berger, John, "Thesis Board by John Berger" (1984). *Architecture Senior Theses*. 260.
https://surface.syr.edu/architecture_theses/260

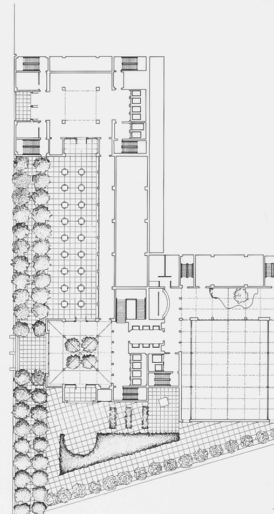
This Thesis is brought to you for free and open access by the School of Architecture Dissertations and Theses at SURFACE. It has been accepted for inclusion in Architecture Senior Theses by an authorized administrator of SURFACE. For more information, please contact surface@syr.edu.



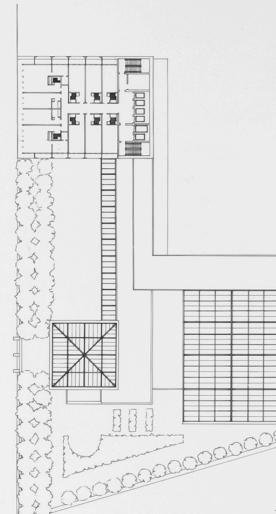
5



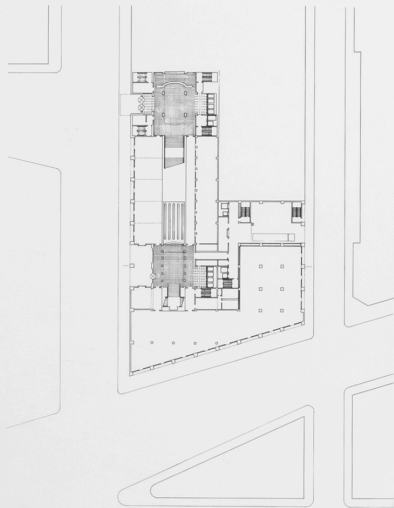
6



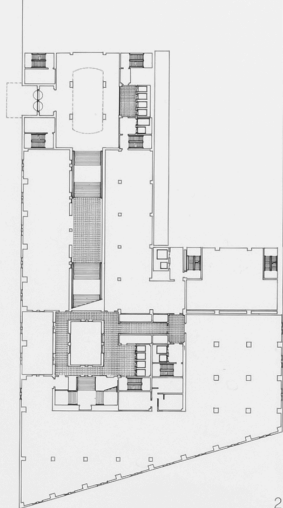
7



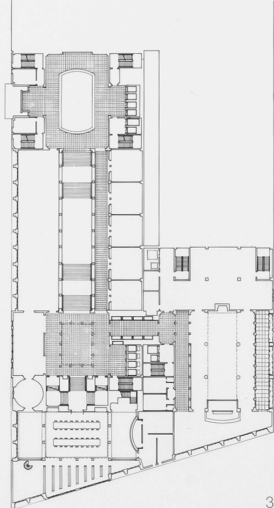
T



2



3



4

