

Syracuse University

SURFACE

Upstate New York Science Librarians Conference

2010

Why Do Students Want to Be in the Library If They Aren't Using the Books?

Susan Gibbons
University of Rochester

Follow this and additional works at: <https://surface.syr.edu/nyscilib>



Part of the [Library and Information Science Commons](#)

Recommended Citation

Gibbons, Susan, "Why Do Students Want to Be in the Library If They Aren't Using the Books?" (2010).
Upstate New York Science Librarians Conference. 40.
<https://surface.syr.edu/nyscilib/40>

This Presentation is brought to you for free and open access by SURFACE. It has been accepted for inclusion in Upstate New York Science Librarians Conference by an authorized administrator of SURFACE. For more information, please contact surface@syr.edu.



Why Do Students Want to Be in the Library If They Aren't Using the Books?

Susan Gibbons

Vice Provost &

Andrew H. & Janet Dayton

Neilly Dean

River Campus Libraries

University of Rochester

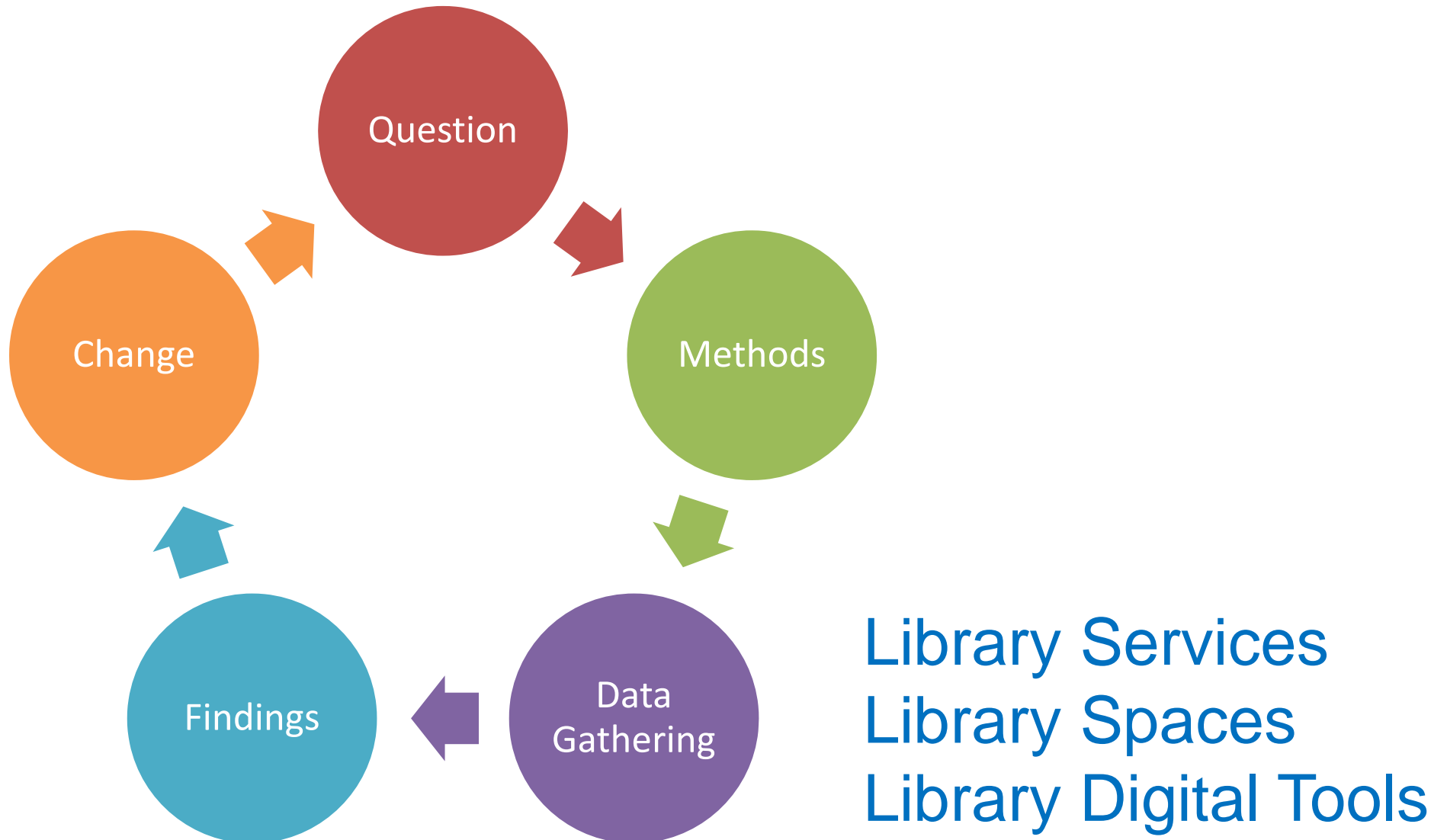


Focus on our Local Users

- User studies with anthropological & ethnographic methods
 - 2003/04: Faculty
 - 2004/06: Undergraduate students
 - 2006/08: Graduate students
 - 2007/09: How people search
 - 2008/09: Science libraries in digital age



Process





Research Question

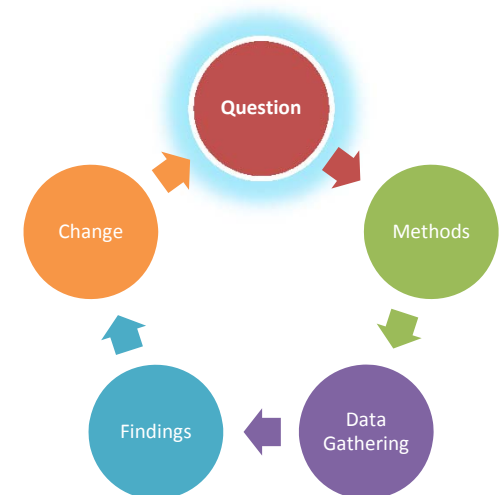
- How can we explain student preference for using “library” space over others?
- What do students need to make the most of academic opportunities?
- What can libraries do to better meet student needs in time of rapid change?





Case Study: Gleason Library

- \$5M donation to renovate library and create a “student-centered space”
- What types of library spaces do our students need?



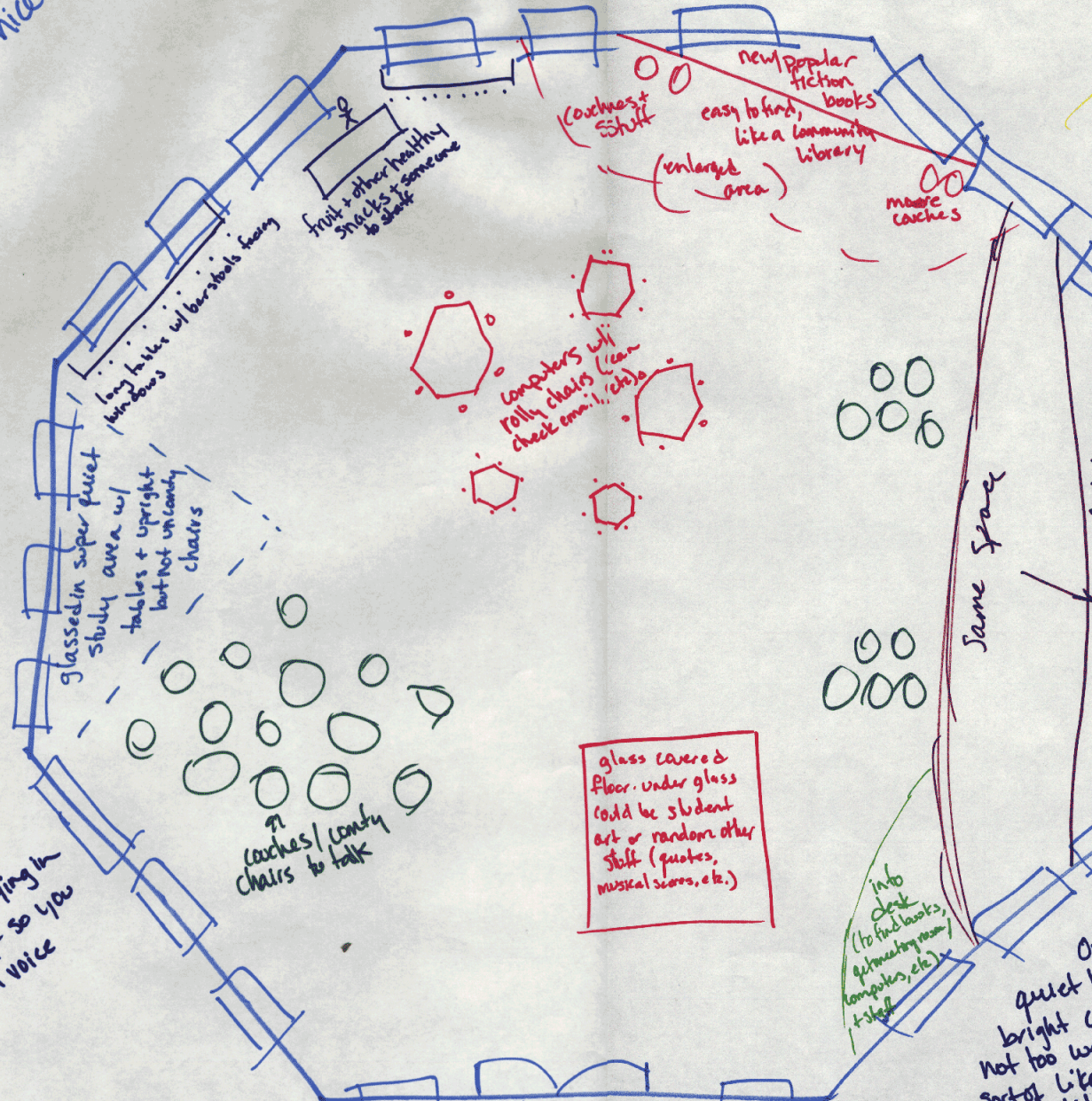


Design Workshop

- Walk-in participation (\$5 & Free Food!)
- “Imagine the library has a big, new, empty space and they asked You to design it...It is exactly the way you wanted it to be and you love it and want to go there a lot. Show us what it looks like.”



that can open nice day
= window



Sun Shining all the time (or sunlamps in winter)

new popular fiction books easy to find, like a community library (enlarged area)

computers w/ rolling chairs (can check email, etc.)

glazed in super quiet study area w/ tables + upright chairs but not up comfy

coaches / comfy chairs to talk

glass covered floor. under glass could be student art or random other stuff (quotes, musical scores, etc.)

inb desk (to find books, computers, etc.) + shelf

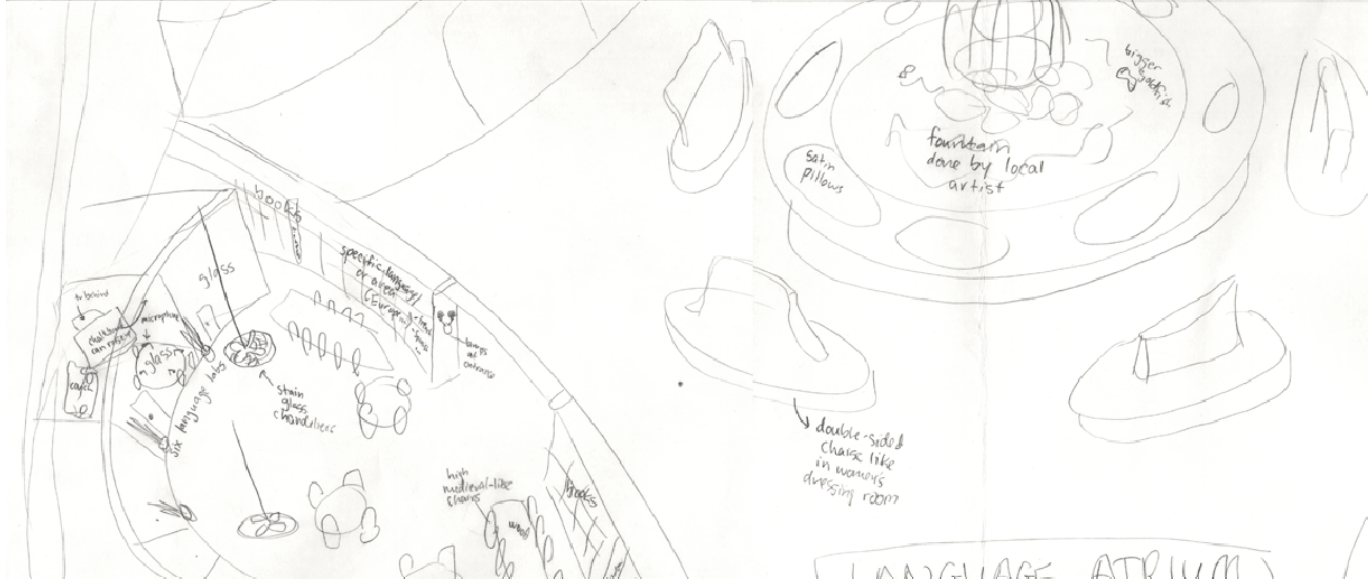
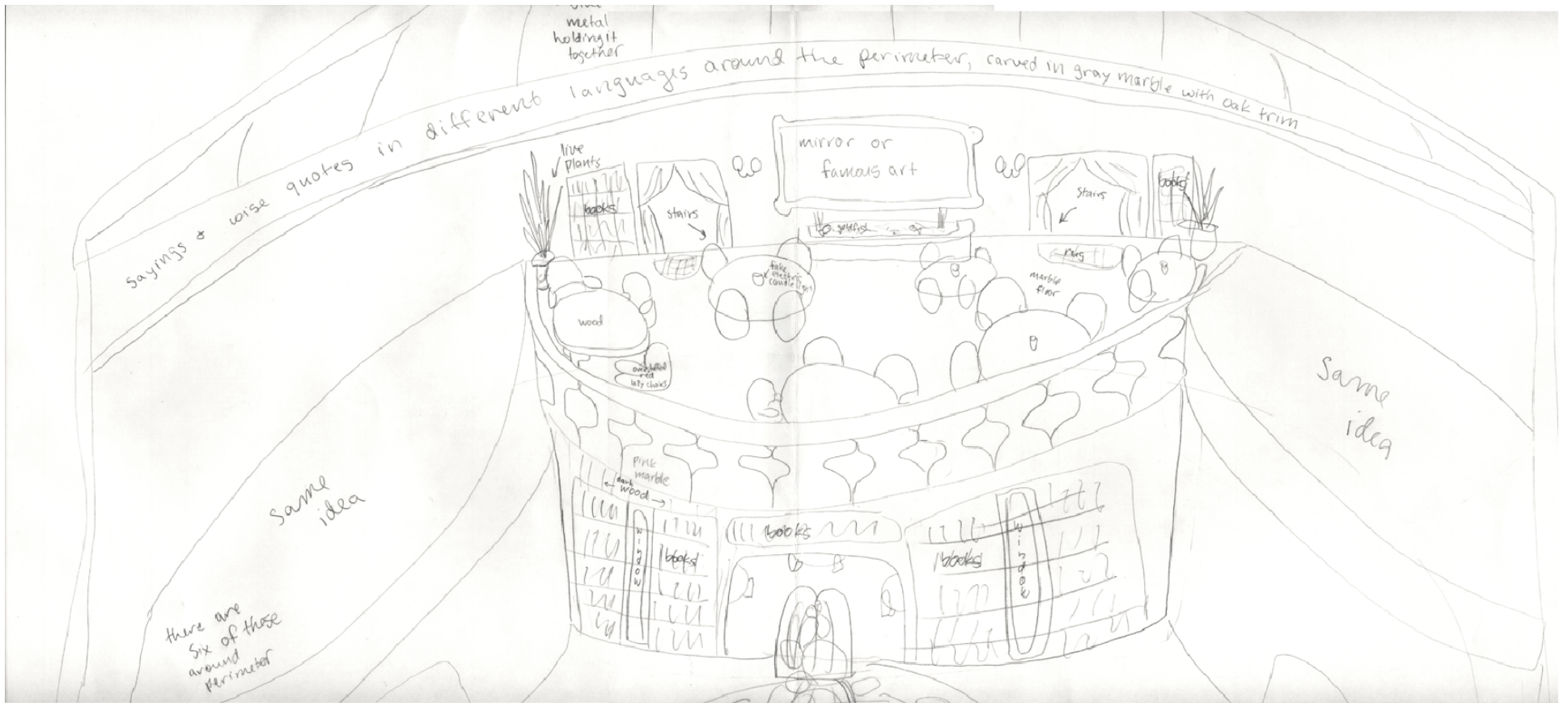
meeting room with tables + chairs. can convert to smaller tables for discussion - but comfy, not as utilitarian as sun, stack room in WC

same space

soothing but not levatory music playing in background, softly - so you can talk in a normal voice

you should be happy when you are here! (even if you are studying)

Overall atmosphere is quiet but not silent, lots of bright colors + semi-modern but not too weird looking furniture - sort of like an all weather space but not as utilitarian - ceiling has clouds painted on it. Georgia O'Keeffe + similar walls





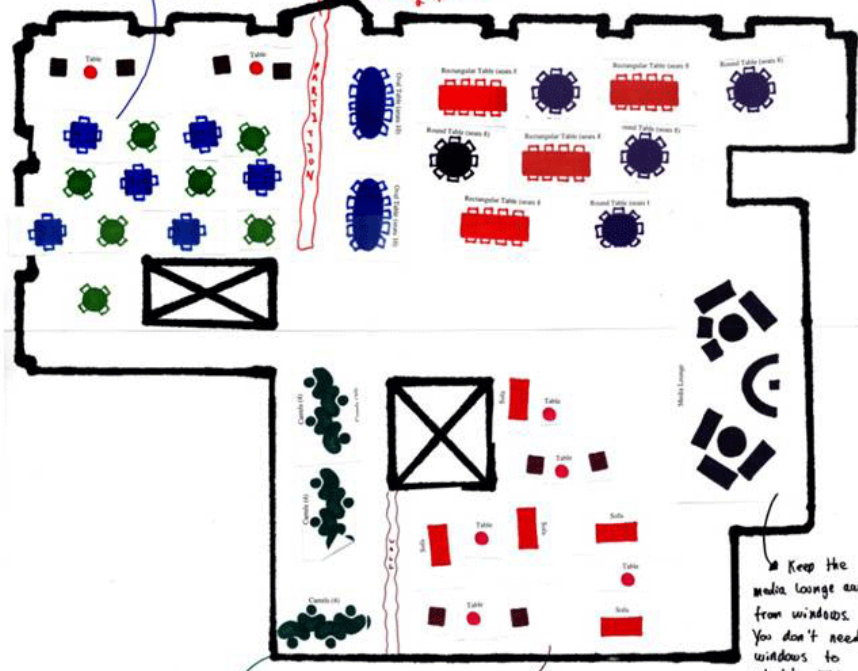
Composite

- Collaborative
- Flexibility
- Comfort
 - Sitting, slouching, lying down all supported; food & drink
- Technology and tools are well integrated
 - From plasma screens to staplers
- Staff support
 - Very generic, all-purpose



Small tables will get more use than large ones. Big group projects do not happen often. Instead, you usually want to study with a few friends.

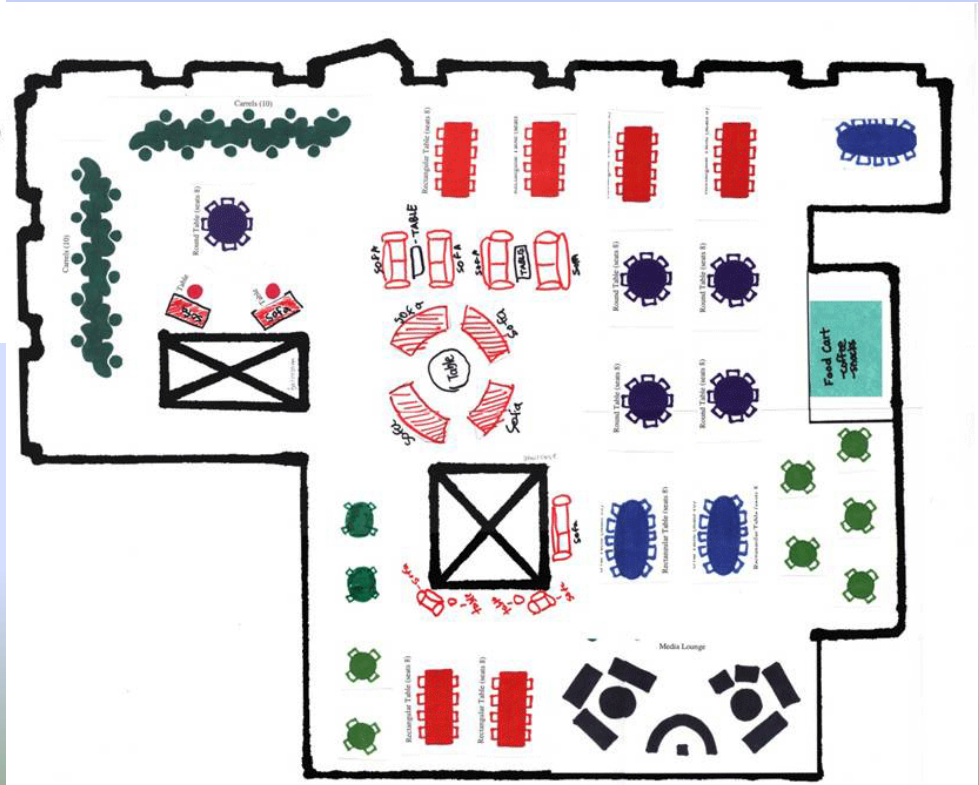
Separate large group areas from small ones. Especially in large spaces, echoing can be a problem. Just a few divisions can help.



Individual carrels don't need sun light!

Serve coffee/snacks in the lounge area. Everyone will appreciate it and you will make lots of \$.

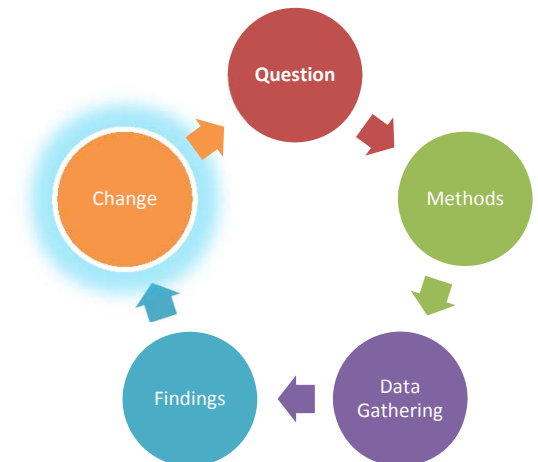
Keep the media lounge away from windows. You don't need windows to watch TV.





Outcomes

- Collaborative
- Flexibility
- Comfort
- Technology and tools are well integrated
- Staff support





Outcomes

- Collaborative
- **Flexibility**
- Comfort
- Technology and tools are well integrated
- Staff support



Quieter Zone





Outcomes

- Collaborative
- Flexibility
- **Comfort**
- Technology and tools are well integrated
- Staff support



Windows & light





Outcomes

- Collaborative
- Flexibility
- Comfort
- Technology and tools are well integrated
- Staff support



RIVER CAMPUS LIBRARIES

- **10 computer stations in three locations**
- **2 printers in two locations (wireless printing)**
- **44 carrels with power and data connections**
- **Wireless throughout**
- **In-slab power distribution**



RIVER CAMPUS LIBRARIES

$f(x) = y = \arctan 2x$
 $f'(x) = \frac{2}{1+4x^2}$

$y = \tan(\sqrt{1-x}) = \tan(1-x)^{\frac{1}{2}}$
 $f'(x) = \sec^2(\sqrt{1-x}) = \sec^2(\sqrt{1-x}) \cdot \left(\frac{1}{2}\right)(1-x)^{-\frac{1}{2}} = \frac{\sec^2(\sqrt{1-x})}{2\sqrt{1-x}}$

$f'(x) = (1x^2 + 30x^4 + 2)(3x+1)^2(5x+1)(4)(x^2+6x^2+2x+1)^2 + (x^2+6x^2+2x+1)^2(3)(3x+1)^2(5x+1)^2(1) + (5)(x^2+6x^2+2x+1)^2(3)(5x+1)^2(3x+1)^2 =$
 $f'(0) = (2)(1)^2(3)^2(1)^2 + (1)^2(3)^2(1)^2(1)^2 + (1)^2(3)^2(1)^2(1)^2 = 2 + 9 + 9 = 20$

$f(x) = \sqrt{1+3x}$
 $L(x) = f(a) + f'(a)(x-a)$
 $f'(x) = \frac{3}{2}(1+3x)^{-\frac{1}{2}}$
 $L(x) = 1 + 1(x-0) = 1+x$
 $L(x) = f(1) + f'(1)(x-1) = 2 + \frac{3}{2}(x-1)$

$80^2 + 60^2 = c^2$
 $c = 100$

$\frac{80}{100} = \frac{80}{100}$
 $\frac{60}{100} = \frac{60}{100}$
 $\frac{100}{100} = \frac{100}{100}$

$2a \frac{da}{dt} + 2b \frac{db}{dt} = 2c \frac{dc}{dt}$
 $2 \cdot 60 \cdot 30 + 2 \cdot 80 \cdot 40 = 2 \cdot 100 \cdot \frac{dc}{dt}$
 $3600 + 6400 = 200 \frac{dc}{dt}$
 $10000 = 200 \frac{dc}{dt}$
 $50 = \frac{dc}{dt}$
50 mph

$V = \frac{4}{3}\pi r^2 h = \frac{4}{3}\pi \left(\frac{3}{10}\right)^2 h$
 $\frac{dV}{dt} = 2 = \frac{4\pi \cdot \frac{3}{10} \cdot \frac{dh}{dt}}{100}$

$H = 10$
 $r = \frac{3}{10}$



Writing surfaces
a great success!



Outcomes

- Collaborative
- Flexibility
- Comfort
- Technology and tools are well integrated
- **Staff support**



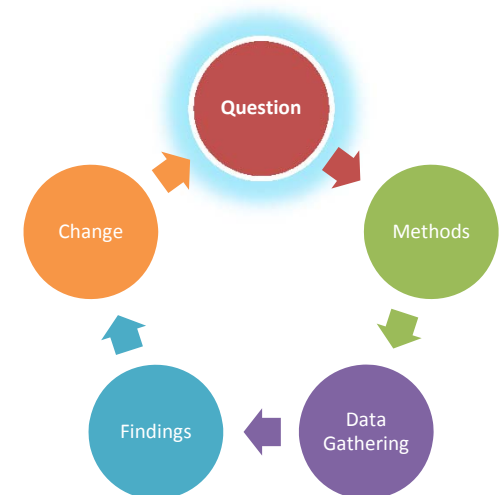
Staff Support

- No service desks in space
- Library staff drop into space as needed



Case Study: Carlson Library

- How heavily is the space being used?
- Who is here?
- What are students doing in the space?

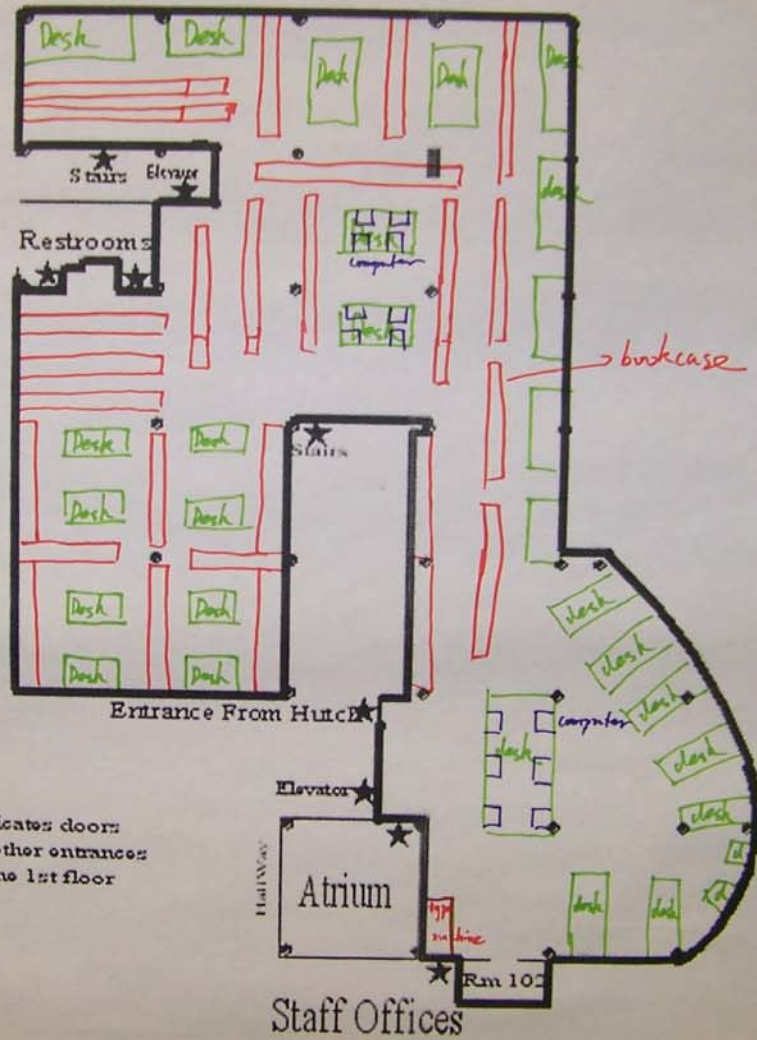




Methods

- Design workshops
- Reply cards
- Observations
- Walk-through interviews





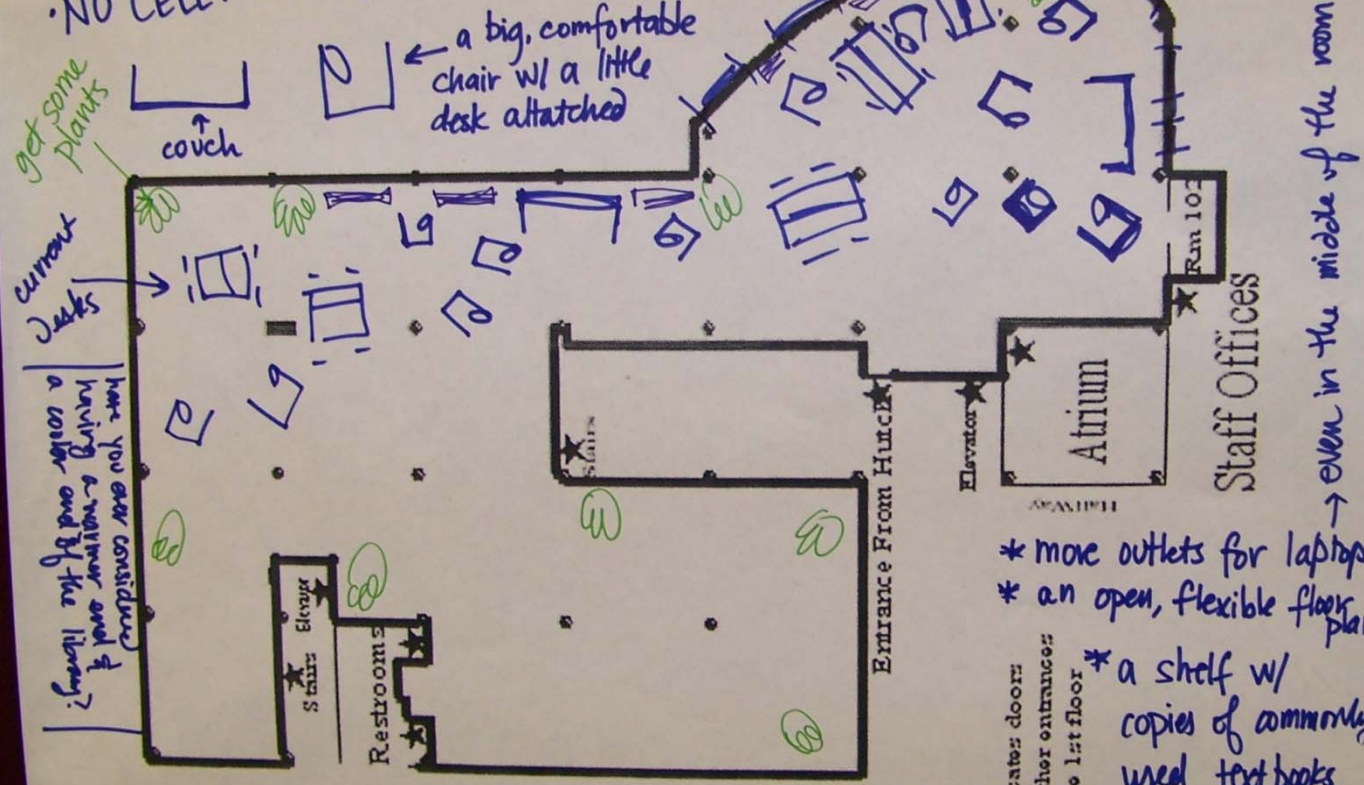
★ Indicates doors or other entrances to the 1st floor

* MAKE THE ENTIRE FLOOR

- NO TALKING
- NO CELLPHONES

Be the 3rd floor already has gp wk facilities & lots of talking happens & circulation

put up bolder artwork in most of empty wall space. marking windows



* make sure to replace flashing fluorescent lights

* some incandescent or @ least yellow fluorescent lights.

* indicates doors or other entrances to the 1st floor

- * more outlets for laptops
- * an open, flexible floor plan

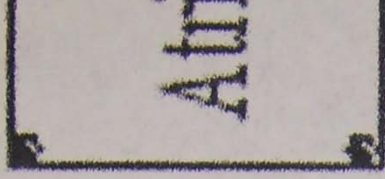
* a shelf w/ copies of commonly used text books.

@ least
glts.



Entrance From Hunc

Elevator



Attn

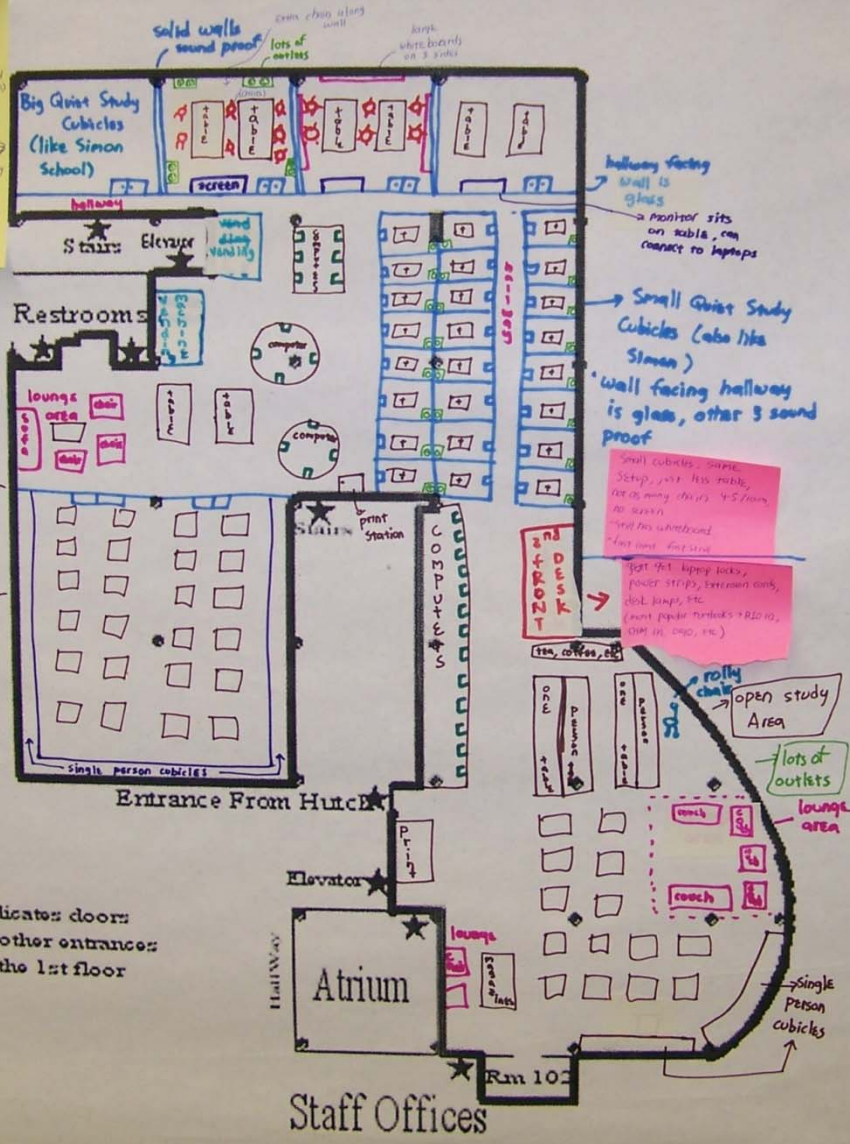
Staff

even
→

- * more outlets for laptops
- * an open, flexible floor plan
- * a shelf w/ copies of commonly used text books.

★ Indicates doors
or other entrances
to the 1st floor

long cubicles, 2 long tables
 along post rows are reverse
 there are everybody has own
 (max 3 hours)
 along family work, reverse 11:22
 no internet all day (max 1 hour)
 front desk has keys to room
 with keys, door-locks for use
 last level
 Post something in room so
 front desk can get 20 min away
 when you about up



Small cubicles same
 Setup, just less noise,
 not as many desks, 4-5 from
 no screen
 not too wheelchair
 not too loud
 get 9ft laptop locks,
 power strips, extension cords,
 desk lamps, etc.
 (most people don't use + R210,
 100 in, 1000, etc.)

★ Indicates doors
 or other entrances
 to the 1st floor

is glass, other 3 sound proof

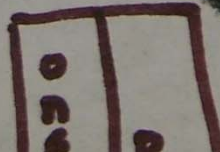
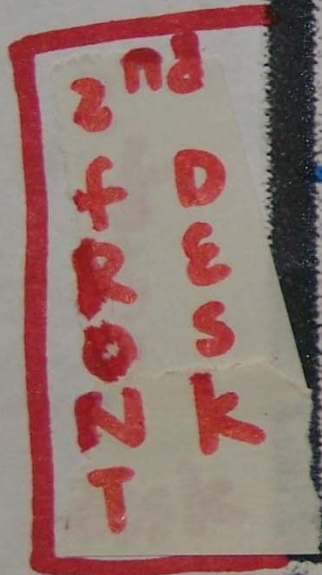
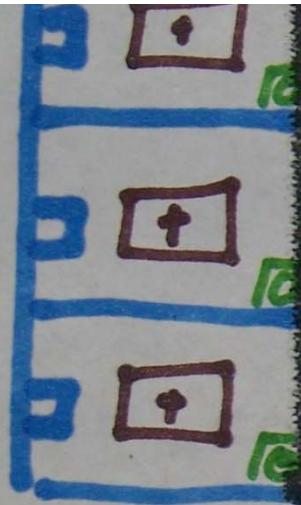
Small cubicles, same setup, just less table, not as many chairs 4-5/room, no screen.
- still has whiteboard.
- first come first serve

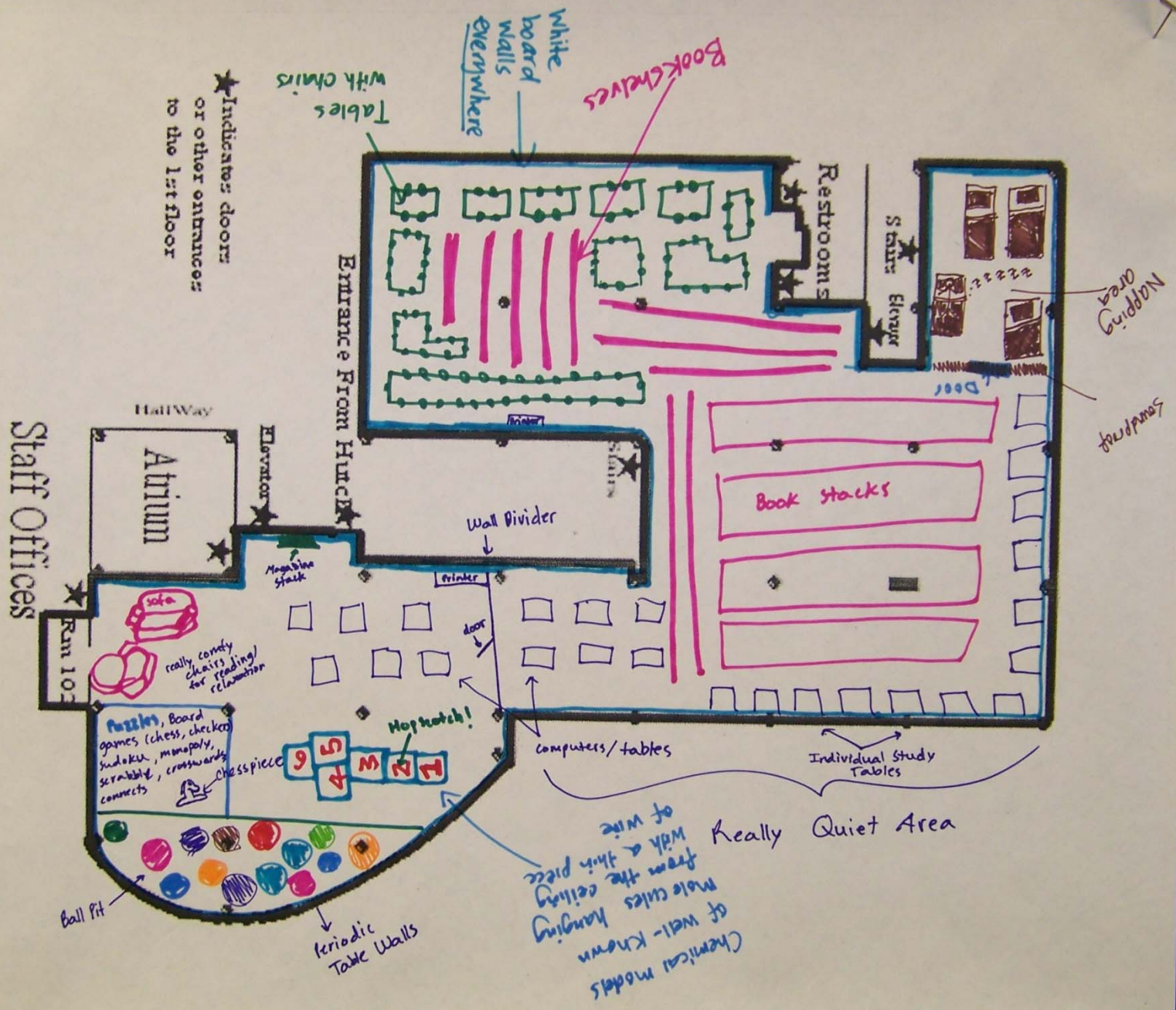
get get laptop locks, power strips, extension cords, desk lamps, etc.
(most popular textbooks → BIO 112, CHM 131, ORGO, etc)

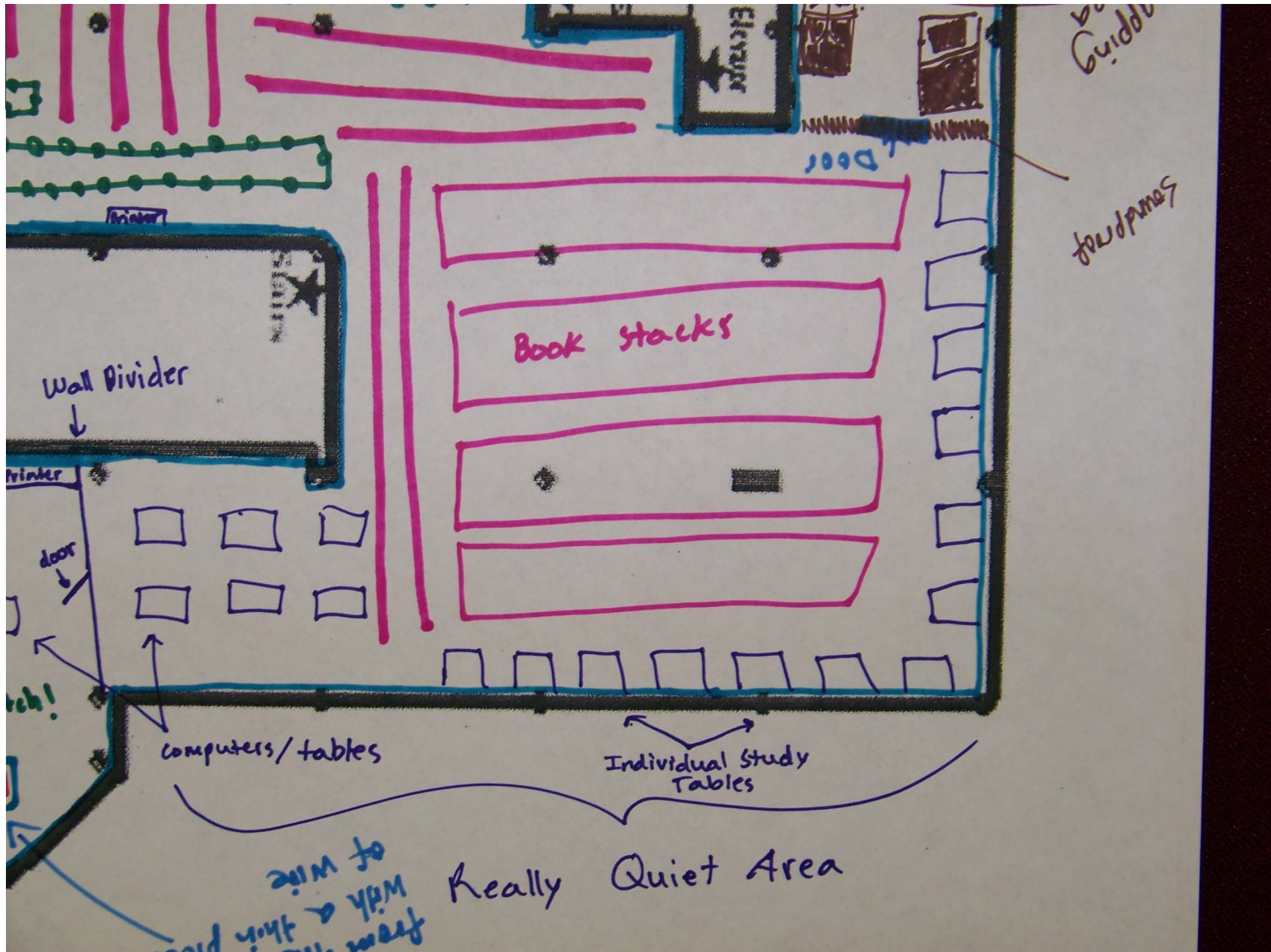
tea, coffee, etc

rollly chair

open study









Reply Cards

100 cards collected

- What are you doing here in this seat right now?
- How long have you been here?
- Why are you here and not someplace else?
- If we made you move this minute, where would you go?
- When is the very last time you were in this seat?



Reply Cards

- 63 quality of space
- 14 convenience
- 9 habit
- 4 books/materials only available here
- 4 to be alone
- 4 to be with friends
- 1 to use computers
- 3 to study





Observations

Wed	Th	Fri	Sat	Sun	Mon	Tu
202	140	90	93	168	172	115

Day	W			Th			F			Sa			Su			M			Tu		
Hr	2	6	10	2	6	10	2	6	10	2	6	10	2	6	10	2	6	10	2	6	10
#	63	57	82	52	42	46	39	29	22	37	27	29	54	58	56	62	54	56	35	30	50





Proportion of Observed Students Doing Academic Work vs. Recreation

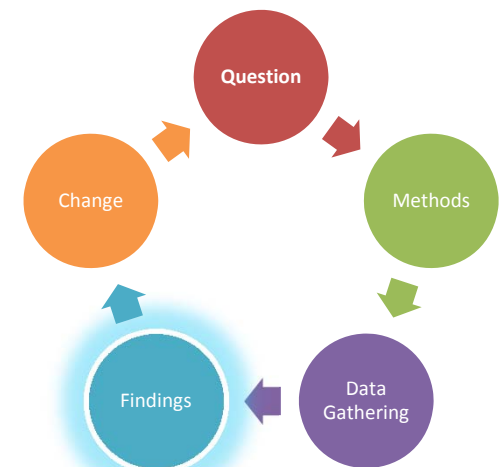
- 85% academic work
- 15% recreation





Findings

- Students want to be in a place of scholarly *gravitas*
- Provides setting, props, and people to adopt the *habitus*
- Facilitation of transition from student to scientist or engineer





Change

- Unique spaces designed for the disciplines
- Conversion of collection into people spaces
- Flexible spaces to host teaching, workshop & speaking events

