

Syracuse University

SURFACE

Architecture Thesis Prep

School of Architecture Dissertations and
Theses

Fall 1989

Urban Prospects: A Search for Poetry in the American City Part 2

Gerard D. Damiani
Syracuse University

Follow this and additional works at: https://surface.syr.edu/architecture_tpreps

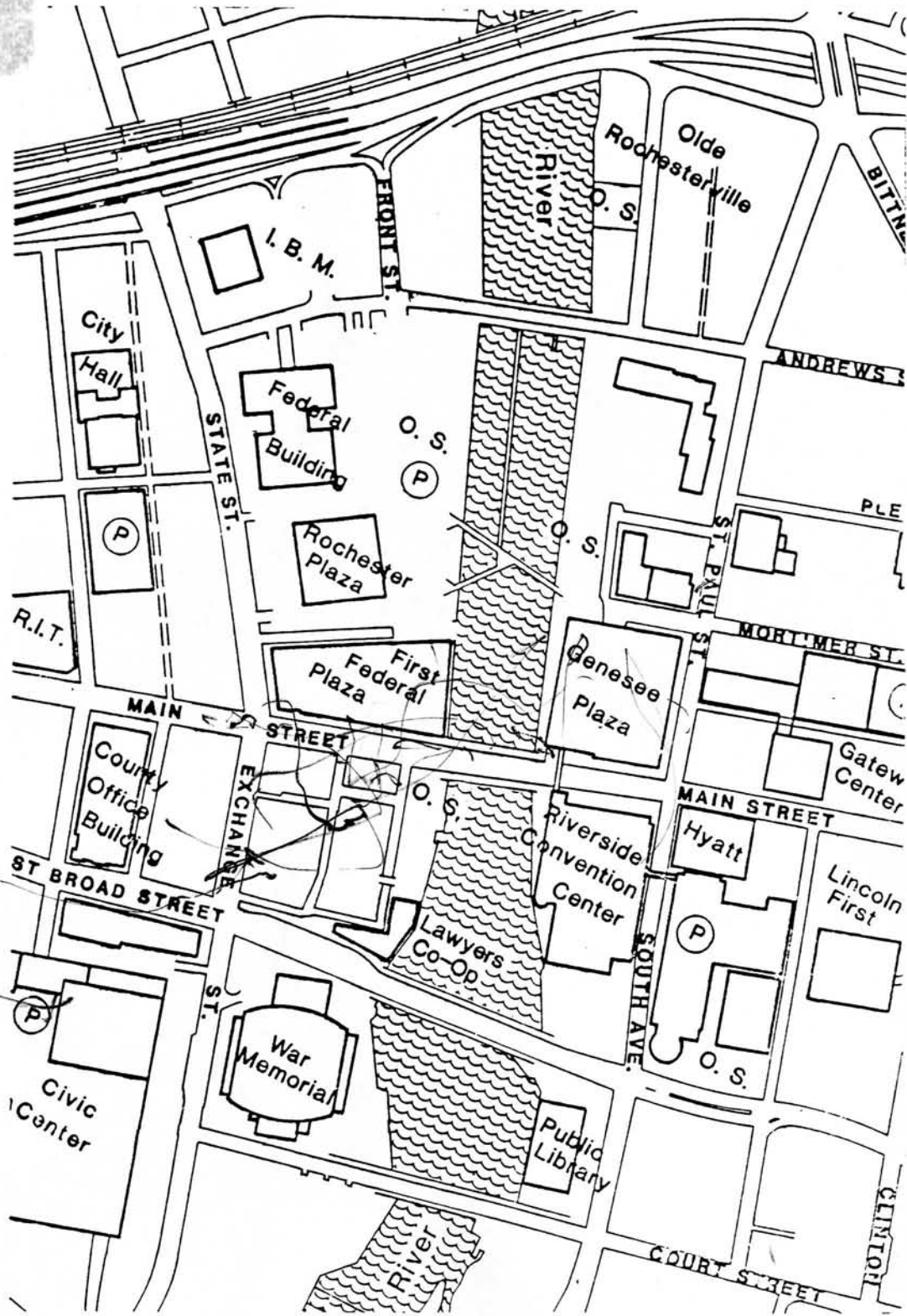


Part of the [Architecture Commons](#)

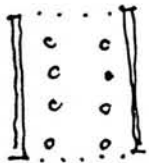
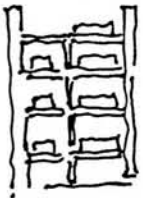
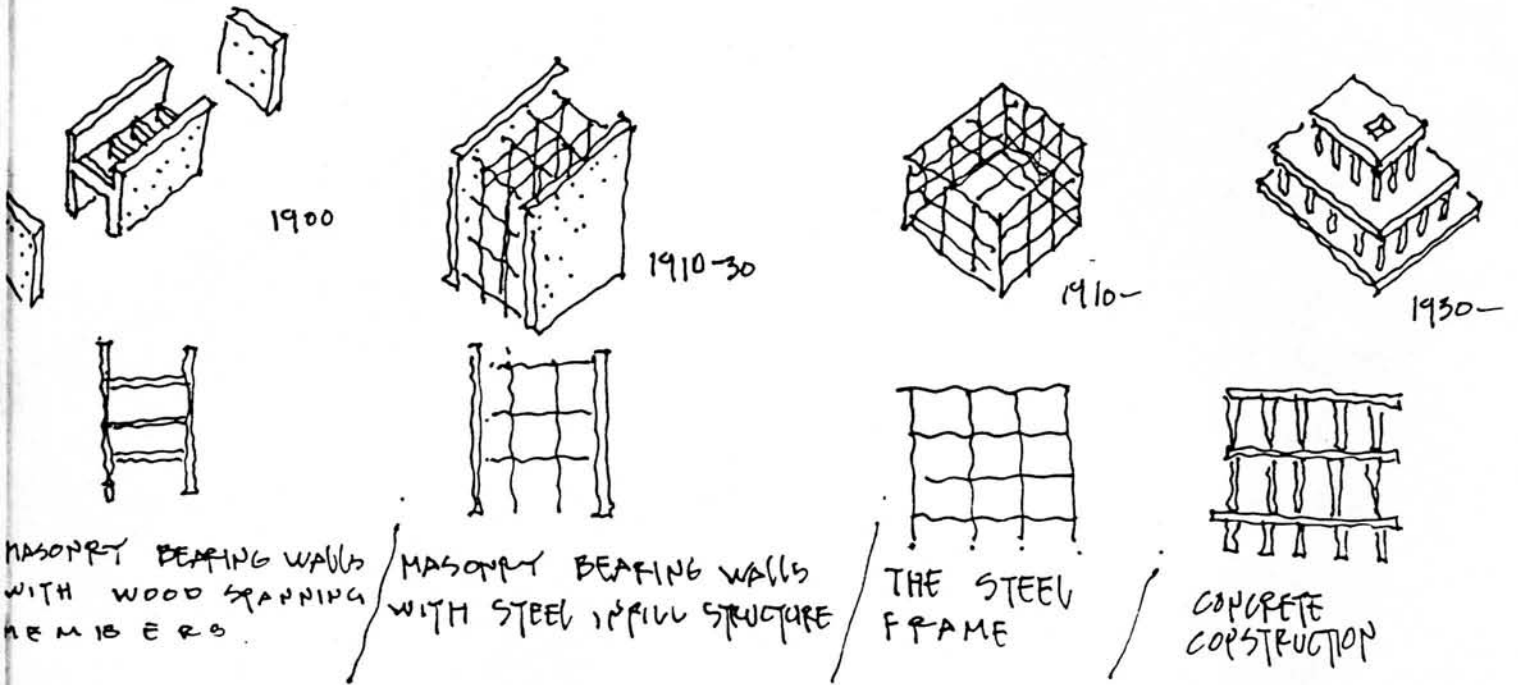
Recommended Citation

Damiani, Gerard D., "Urban Prospects: A Search for Poetry in the American City Part 2" (1989).
Architecture Thesis Prep. 8.
https://surface.syr.edu/architecture_tpreps/8

This Thesis Prep is brought to you for free and open access by the School of Architecture Dissertations and Theses at SURFACE. It has been accepted for inclusion in Architecture Thesis Prep by an authorized administrator of SURFACE. For more information, please contact surface@syr.edu.

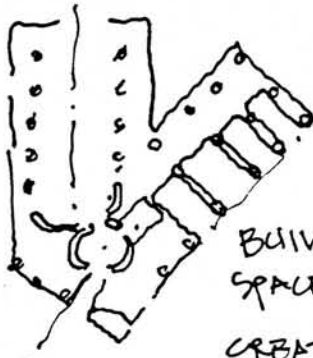
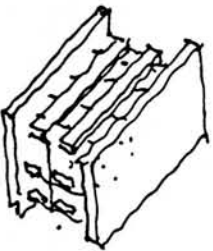


LOCAL BUILDING TYPES WHICH INFORM THE CITY



THESE BUILDING TYPES ARE PRODUCTS OF PURE FUNCTIONAL PLANNING.

BUILDINGS LACK ANY PLATONIC PORTIONS



BUILDING AS A SERIES OF FIGURAL SPACE.

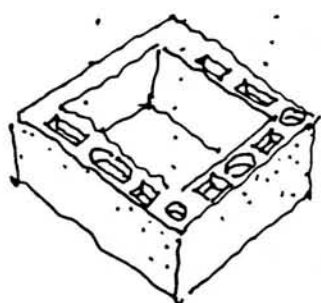
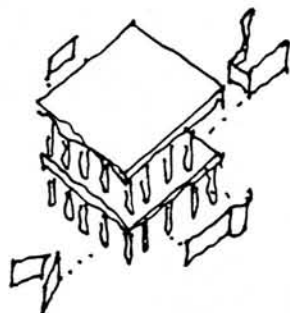
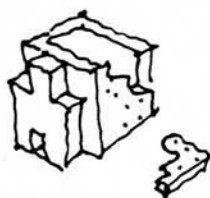
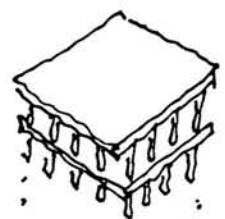
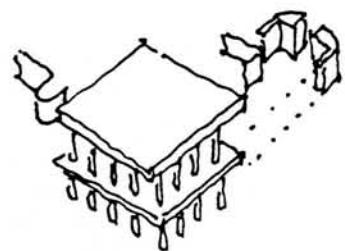
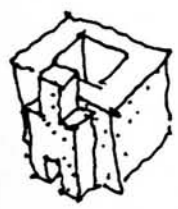
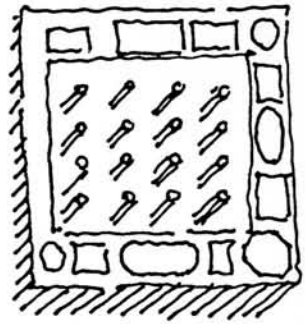
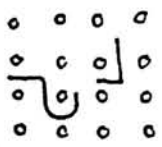
CREATING A BUILDING OF SEQUENCE, BUT THE POLEMIC BUILDING STRUCTURE.

EXAMPLES OF THIS TYPE OCCUR WITH:

MCKIM, MEAD & WHITE'S, EASTMAN THEATRE
ROCHESTER SAVING BANK.

THE HYBRID STRUCTURE

STEEL - MASONRY
CONC. - STEEL
ETC.



ASSIGNING OLD FORMS
NEW FUNCTIONS.

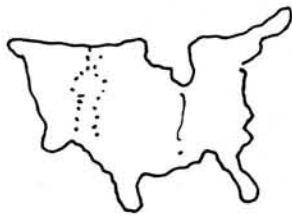
THE READOPTING
OF A OLD SYSTEM
CREATING NEW MEANING

CREATING PERMANENCE
FROM A NEW LATER.

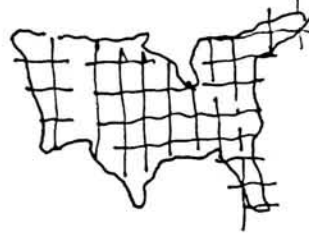
PERMANENCE

FLEXIBILITY THROUGH TYPE

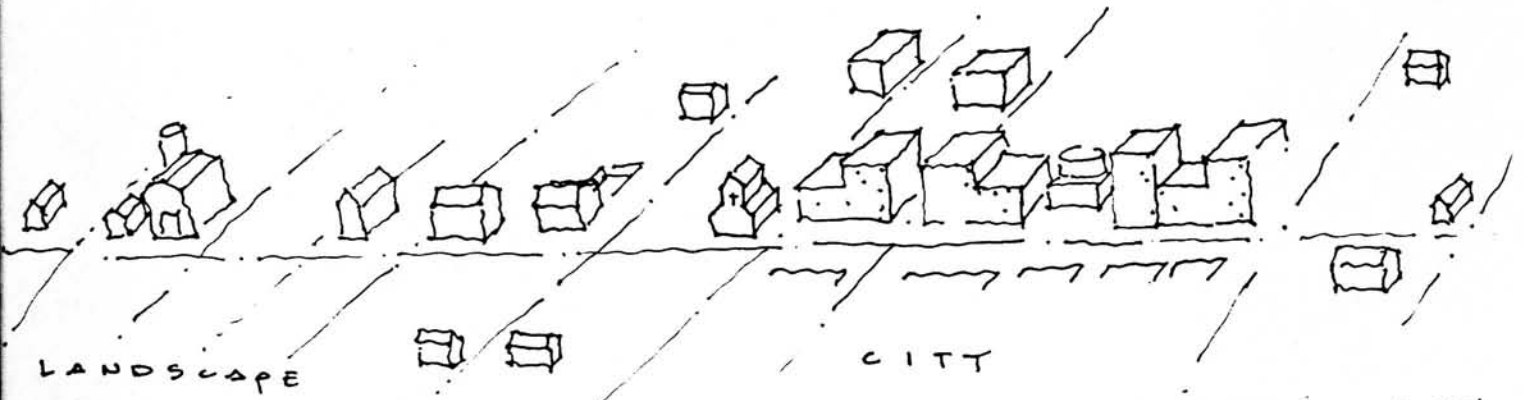
PERMANENCE TO THE
FLEXIBLE



AMERICA AS
LANDSCAPE



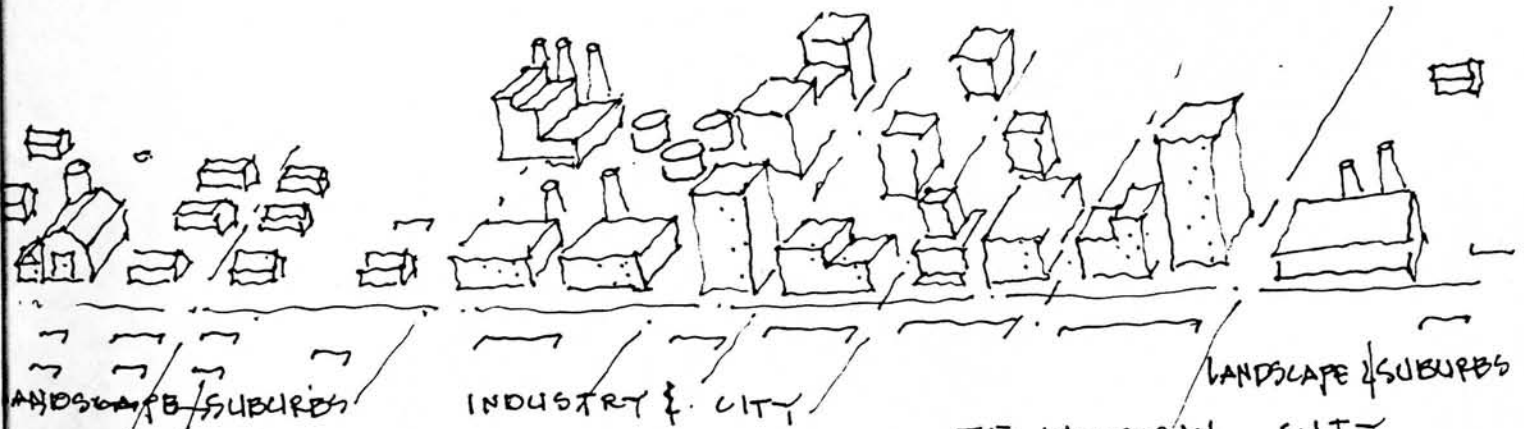
MANS MANIPULATION
OF THE AMERICA
LANDSCAPE



LANDSCAPE

CITY

THE EARLY AMERICAN CITY

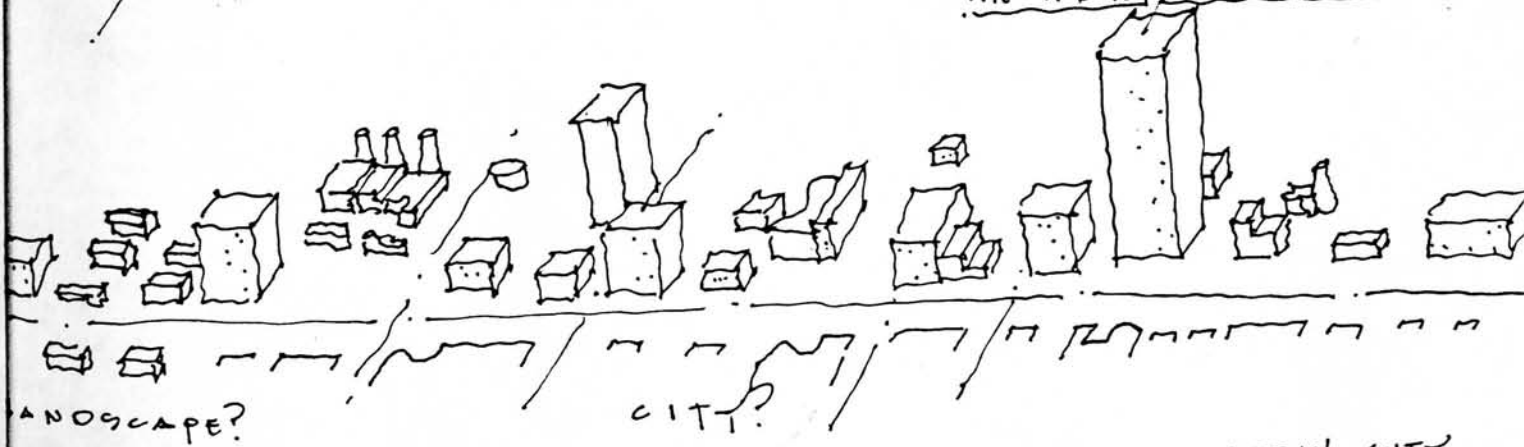


~~LANDSCAPE~~ SUBURBS

INDUSTRY & CITY

LANDSCAPE / SUBURBS

THE INDUSTRIAL CITY

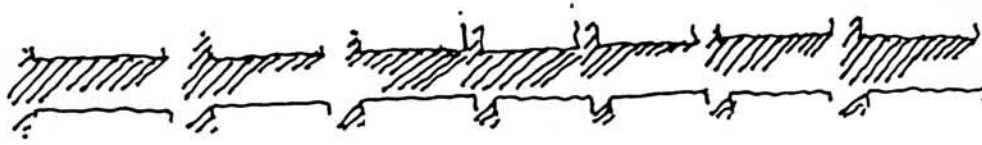


LANDSCAPE?

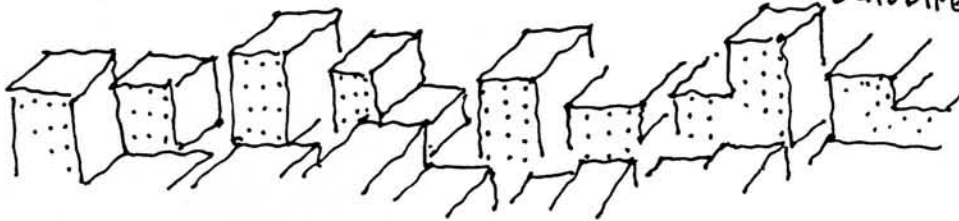
CITY?

THE POST INDUSTRIAL CITY

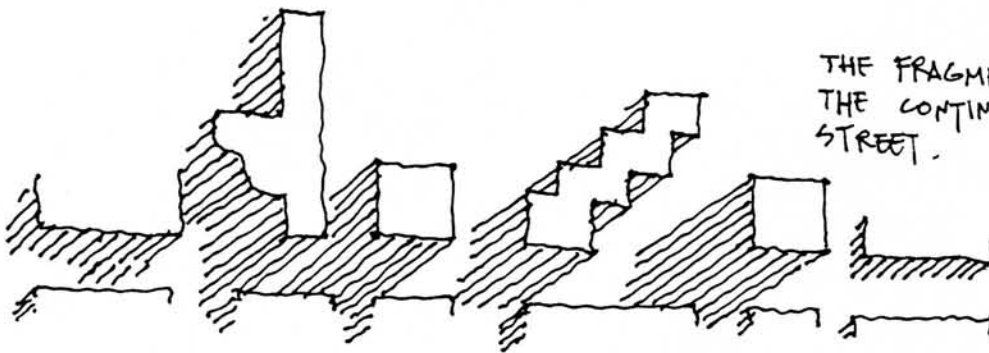
THE DEVELOPMENT OF THE CONTINUOUS URBAN STREET



THE IRREGULAR VERTICAL DISPLACEMENT OF BUILDINGS

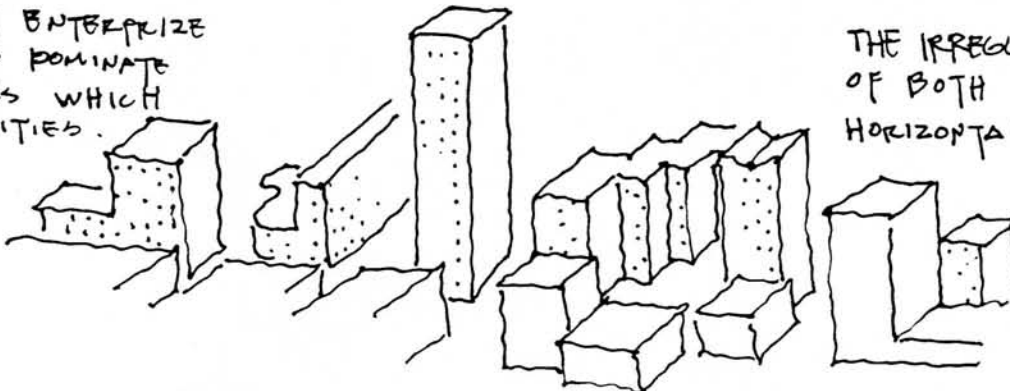


THE EARLY INDUSTRIAL CITY



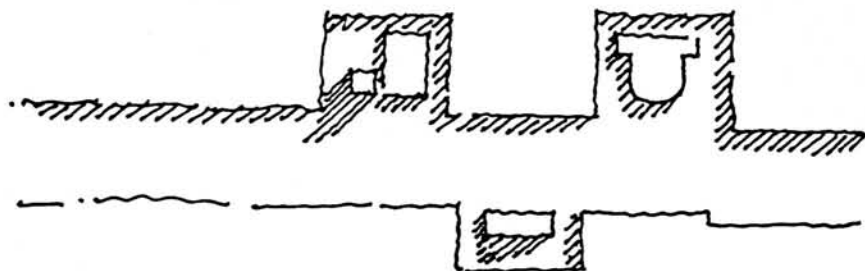
THE FRAGMENTATION OF THE CONTINUOUS URBAN STREET.

INDEPENDENT ENTERPRISE BECOMES THE DOMINANT SILHOUETTES WHICH COMPOSE CITIES.

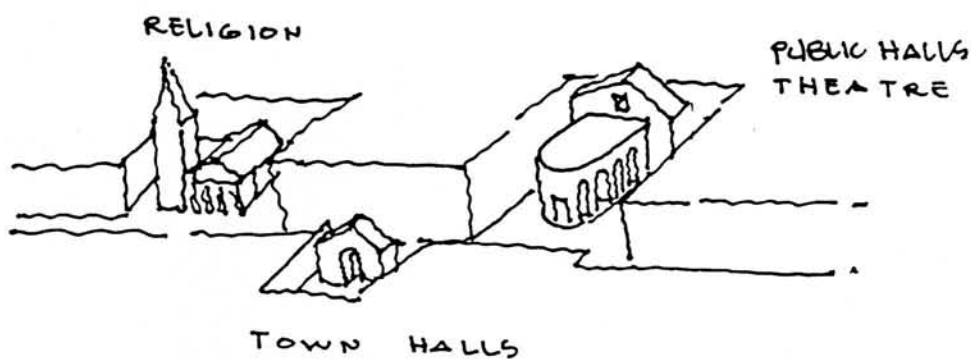


THE IRREGULAR DISPLACEMENT OF BOTH THE VERTICAL & HORIZONTAL BUILDING.

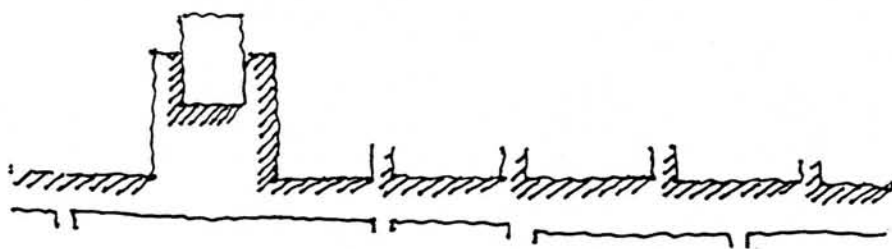
THE POST INDUSTRIAL CITY



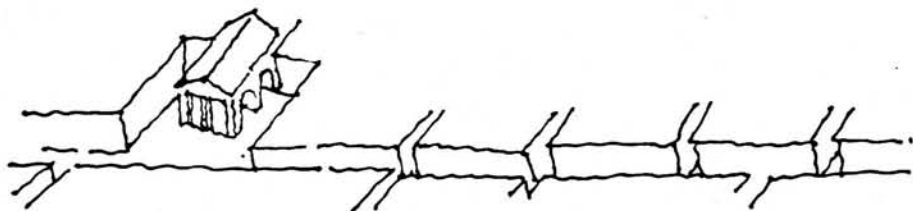
THE FIGURAL
BUILDING VS.
CONTINUOUS GROUND



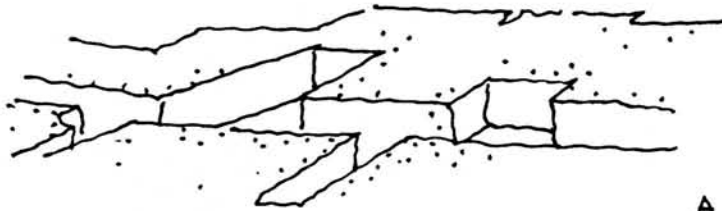
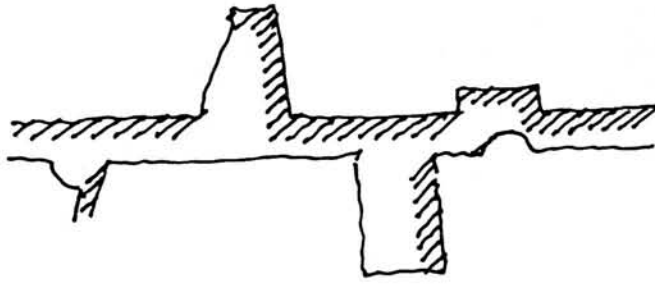
COLLECTIVE VS. INDEPENDENT ENTERPRISE



TOWN HALL

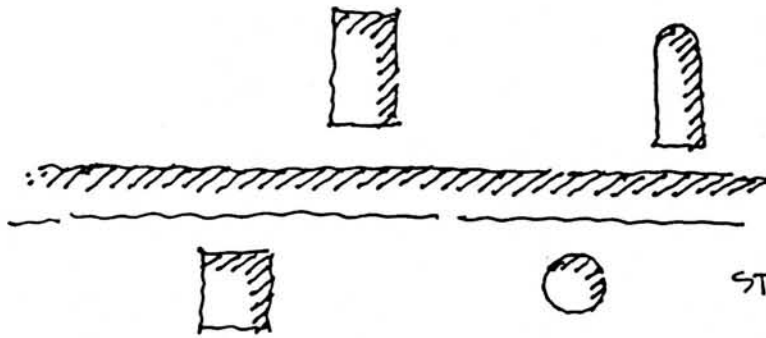


CIVIC IMAGE VS
INDEPENDENT ENTERPRISE



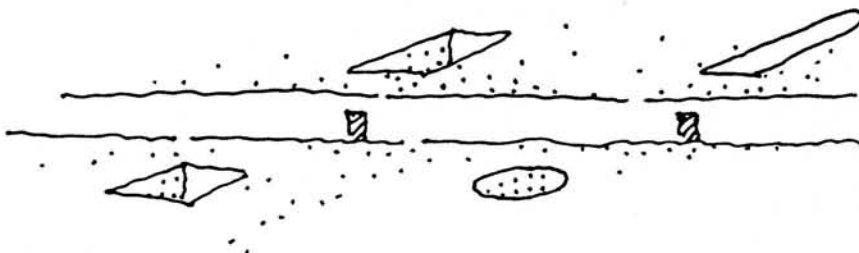
A PATTERN OF
STREETS AND SQUARES.

STREETS AND SQUARES IN HARMONY

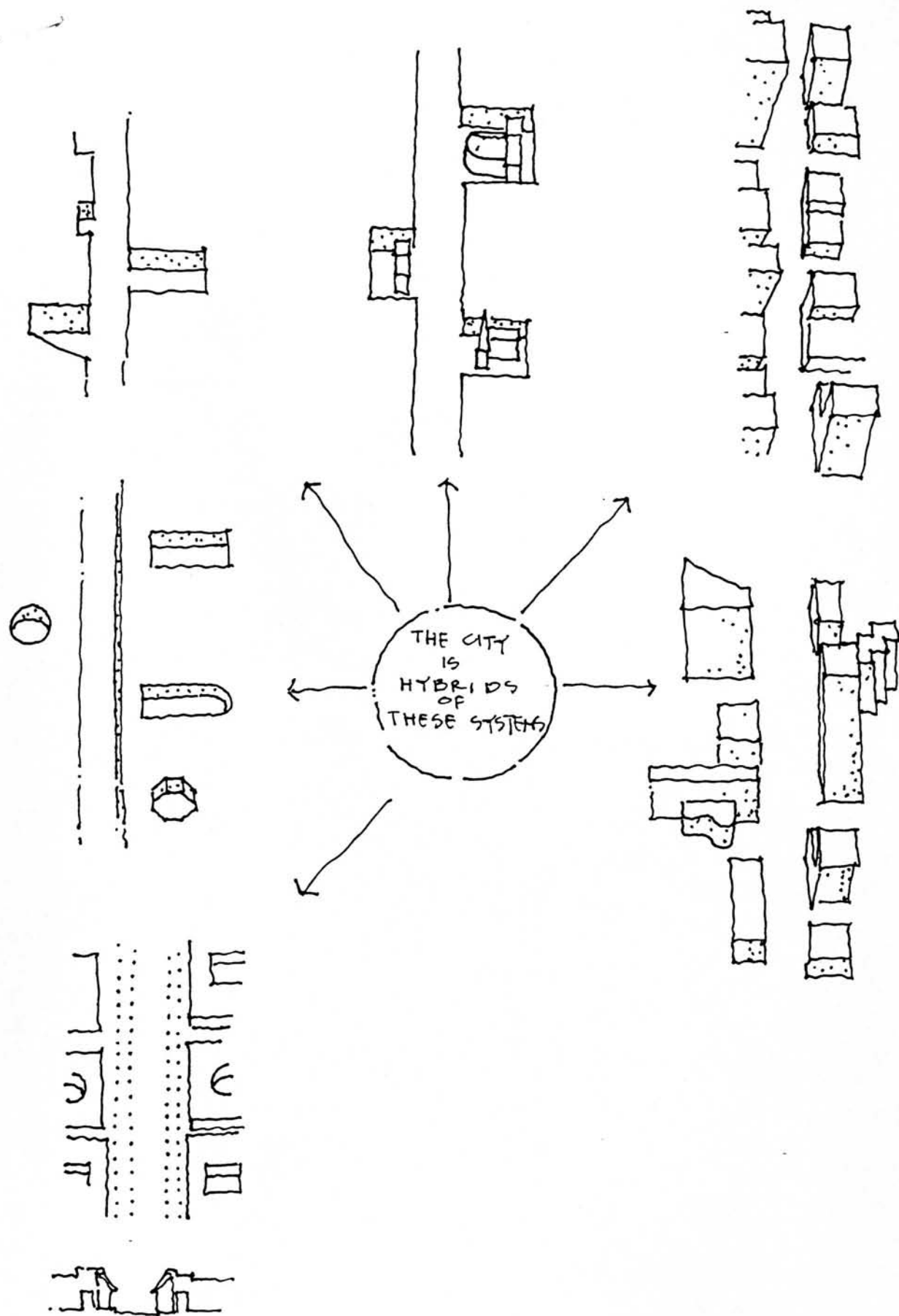


STREET AS PUBLIC REALM

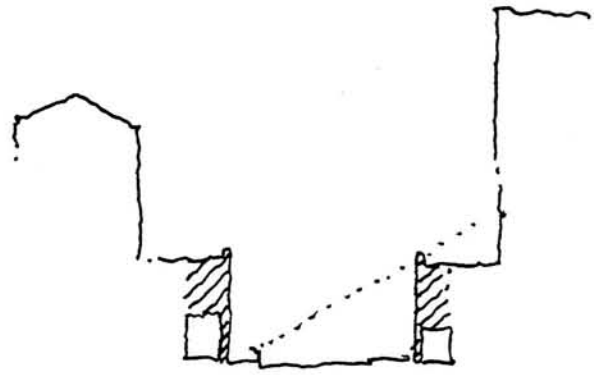
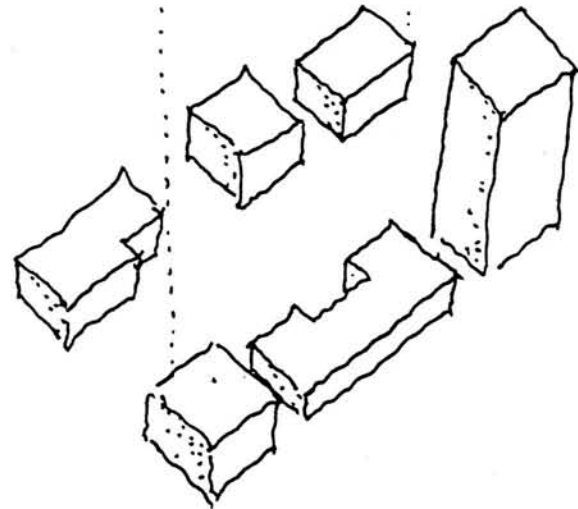
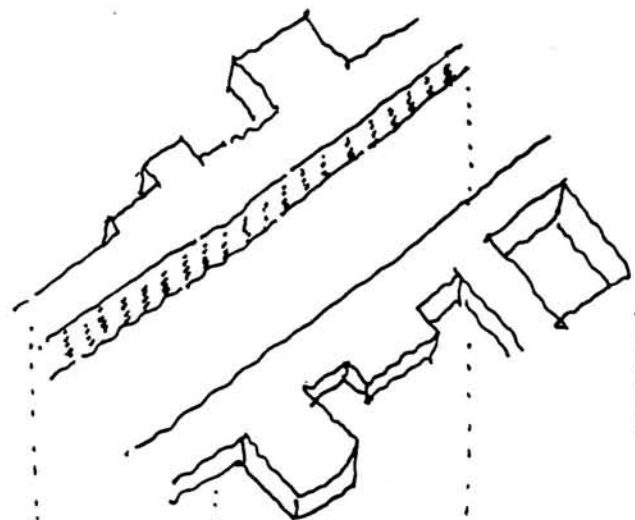
SPACE AS INTERNAL EVENT
PRIVATE REALM

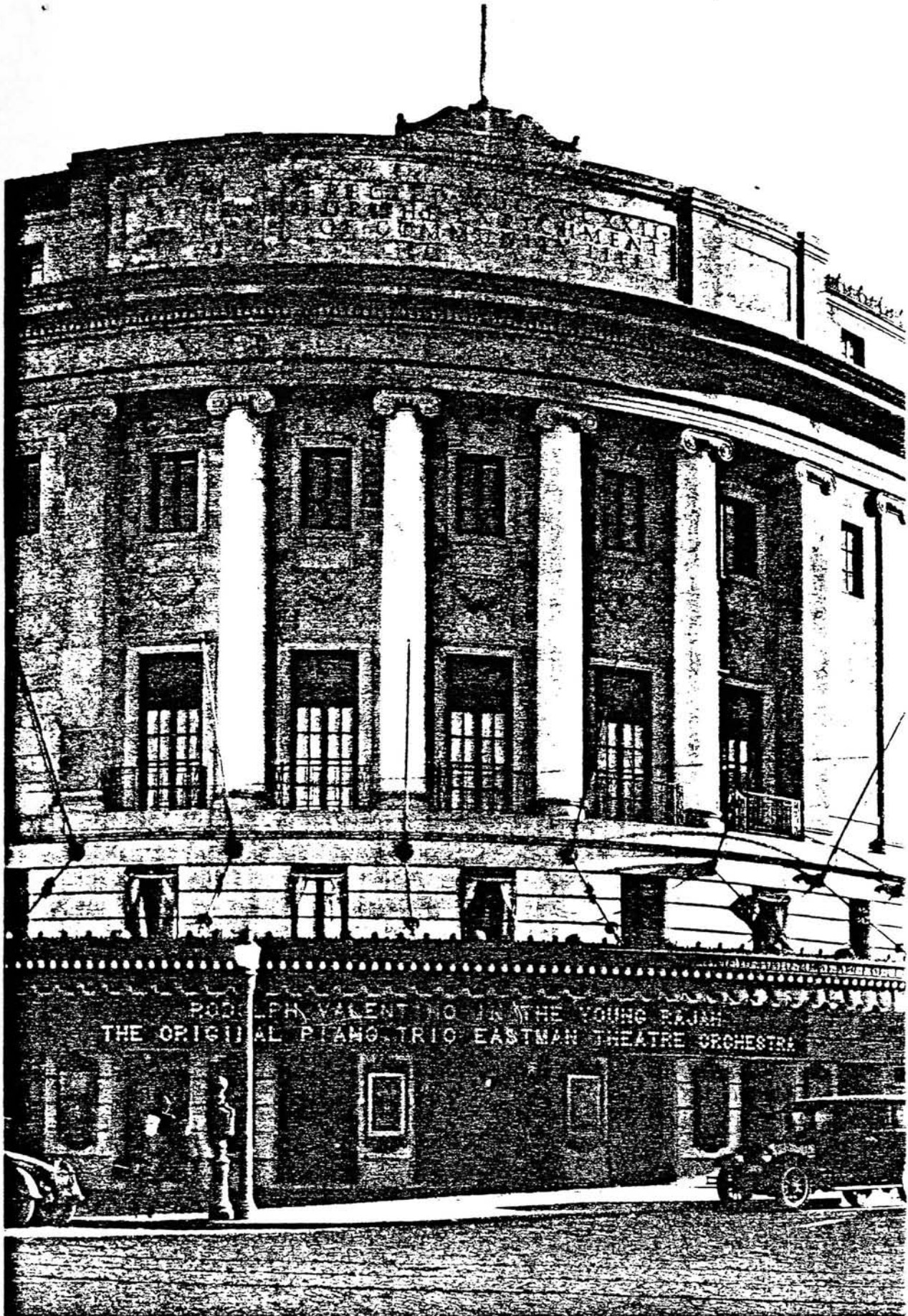


STREETS AND SQUARES AS INDEPENDENT
ENTITIES



A STUDY OF STREET TYPES WHICH COMPOSE CITIES

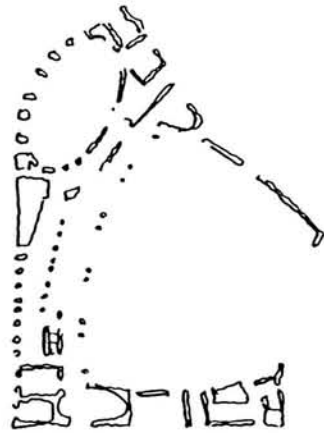
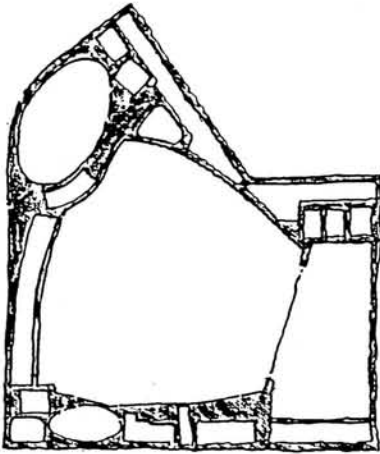
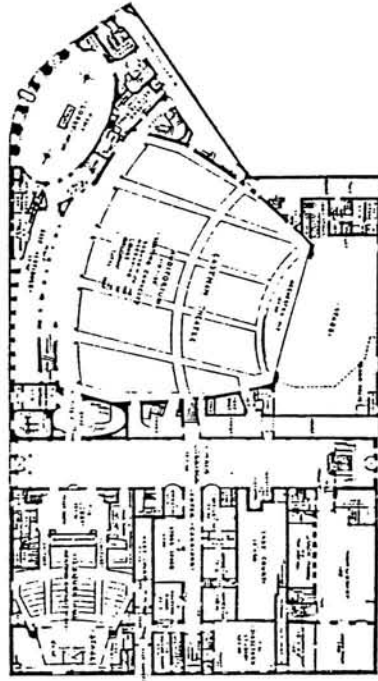
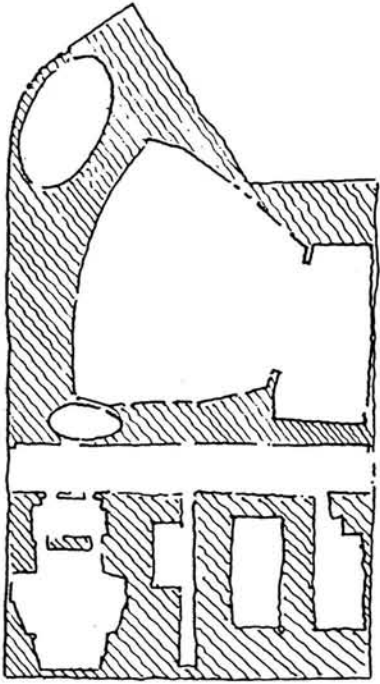


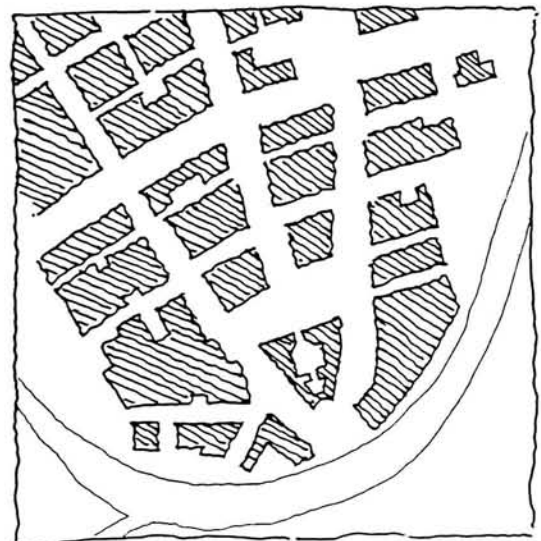
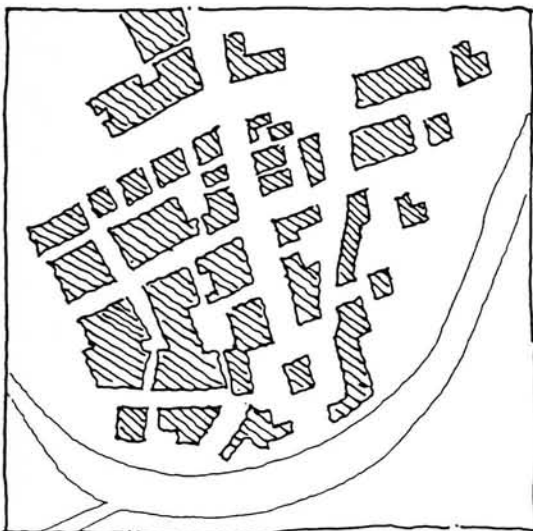
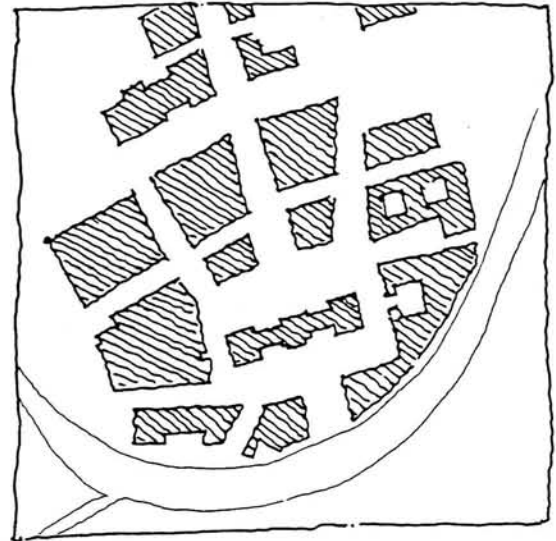
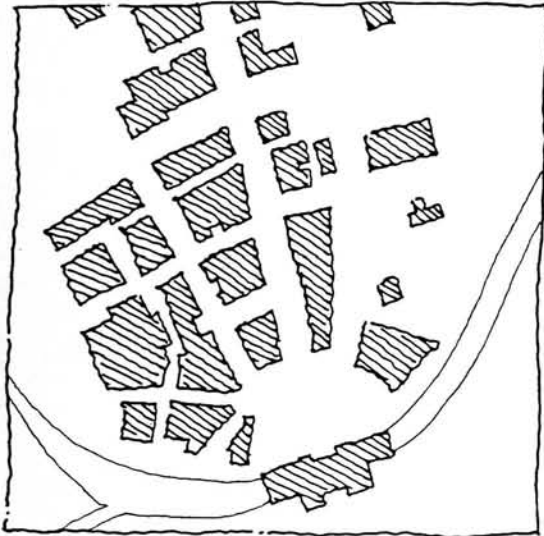
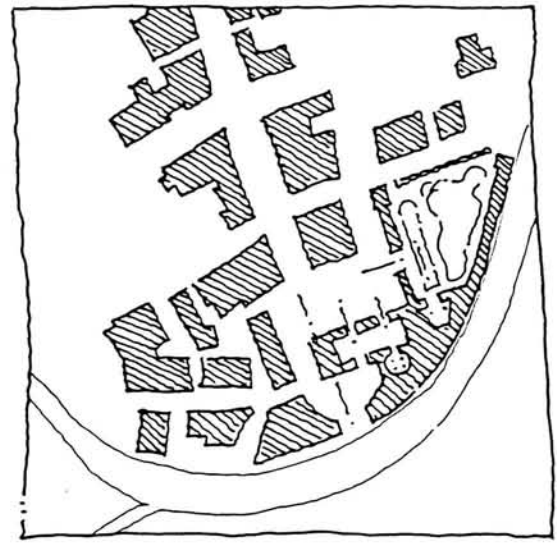
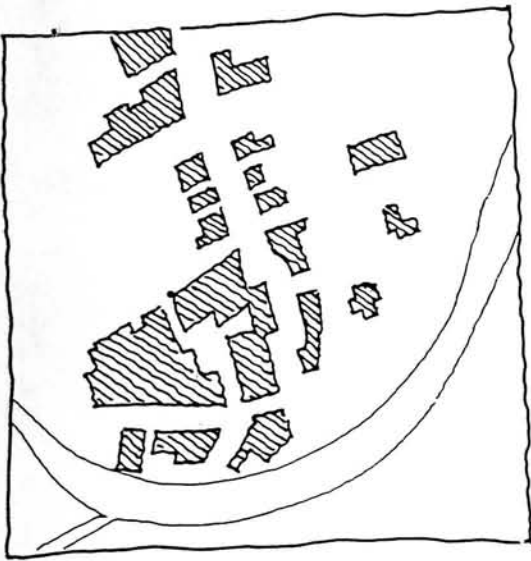


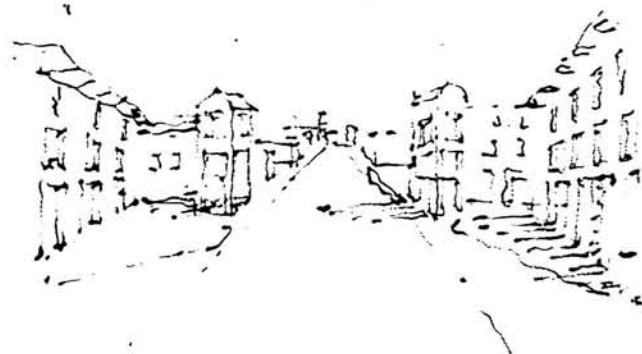
MAIN ENTRANCE

EASTMAN THEATRE AND SCHOOL OF MUSIC, ROCHESTER, N. Y.

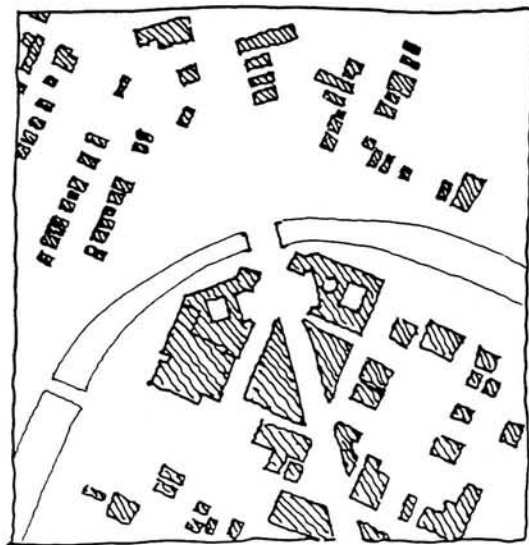
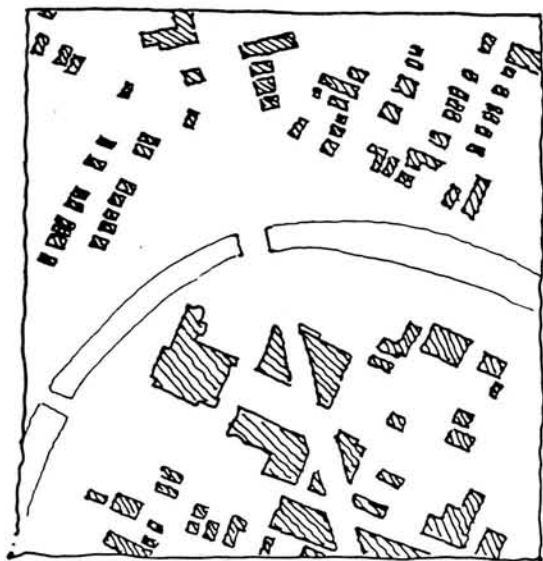
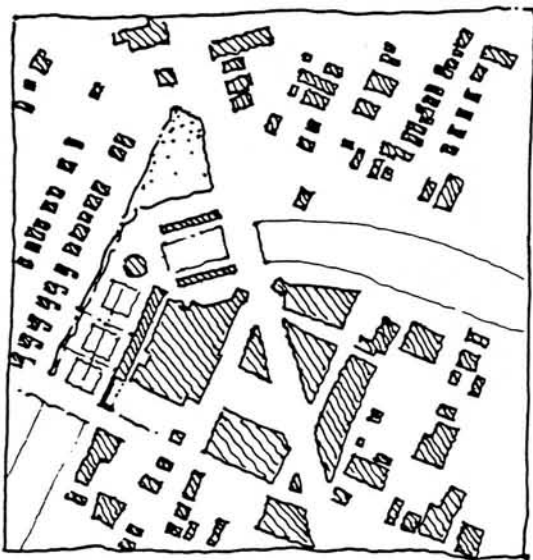
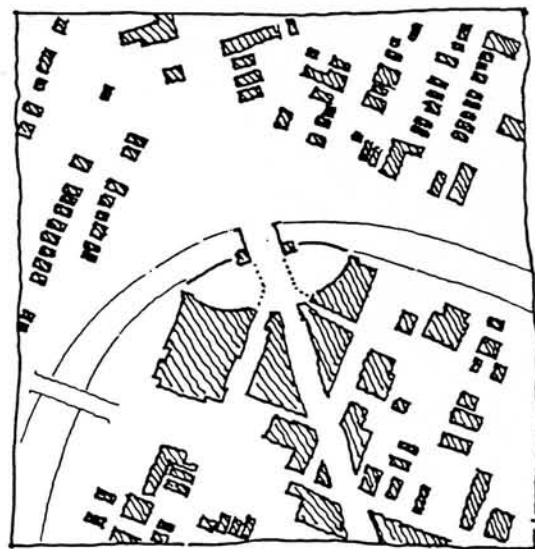
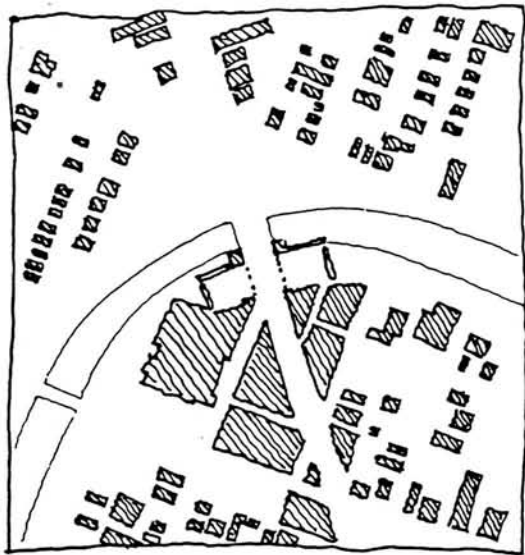
GORDON & KALBER, ARCHITECTS—McKIM, MEAD & WHITE, ASSOCIATE ARCHITECTS

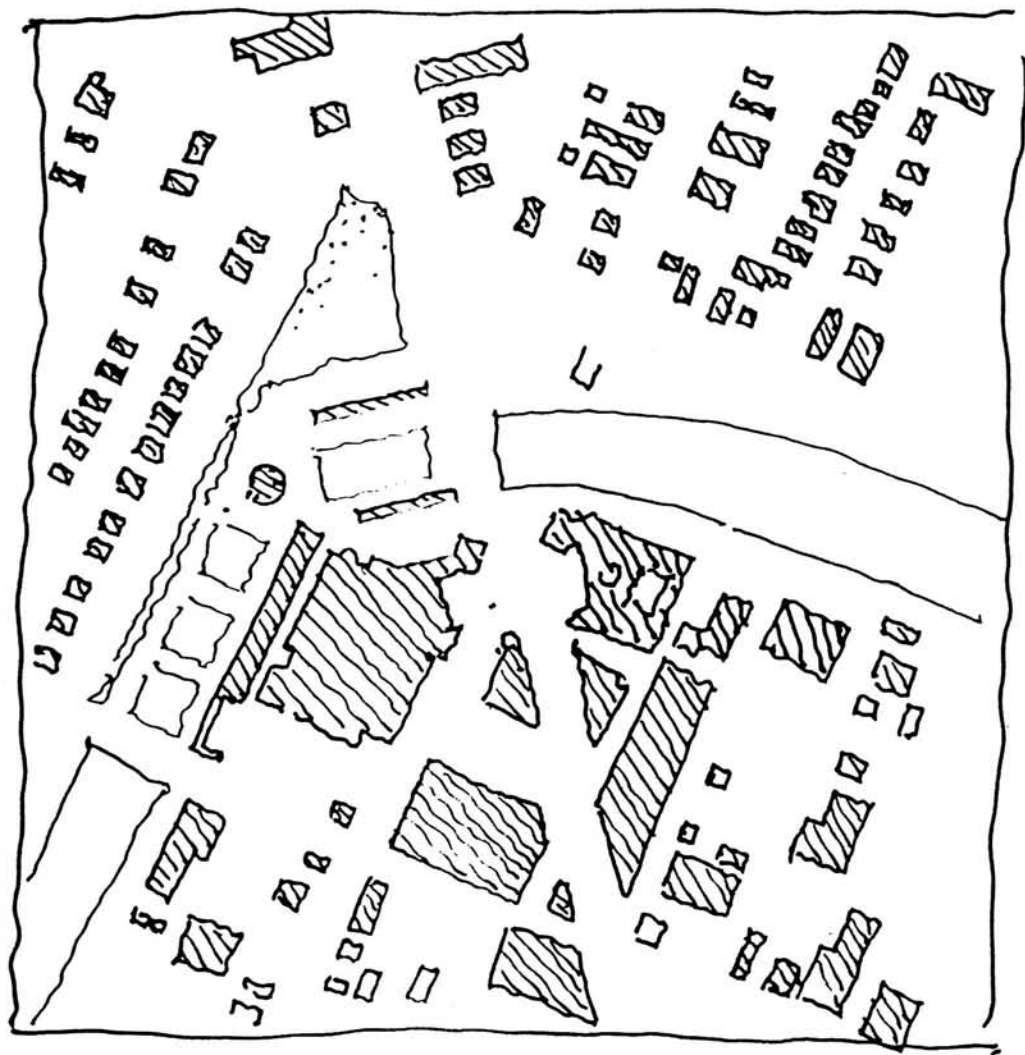


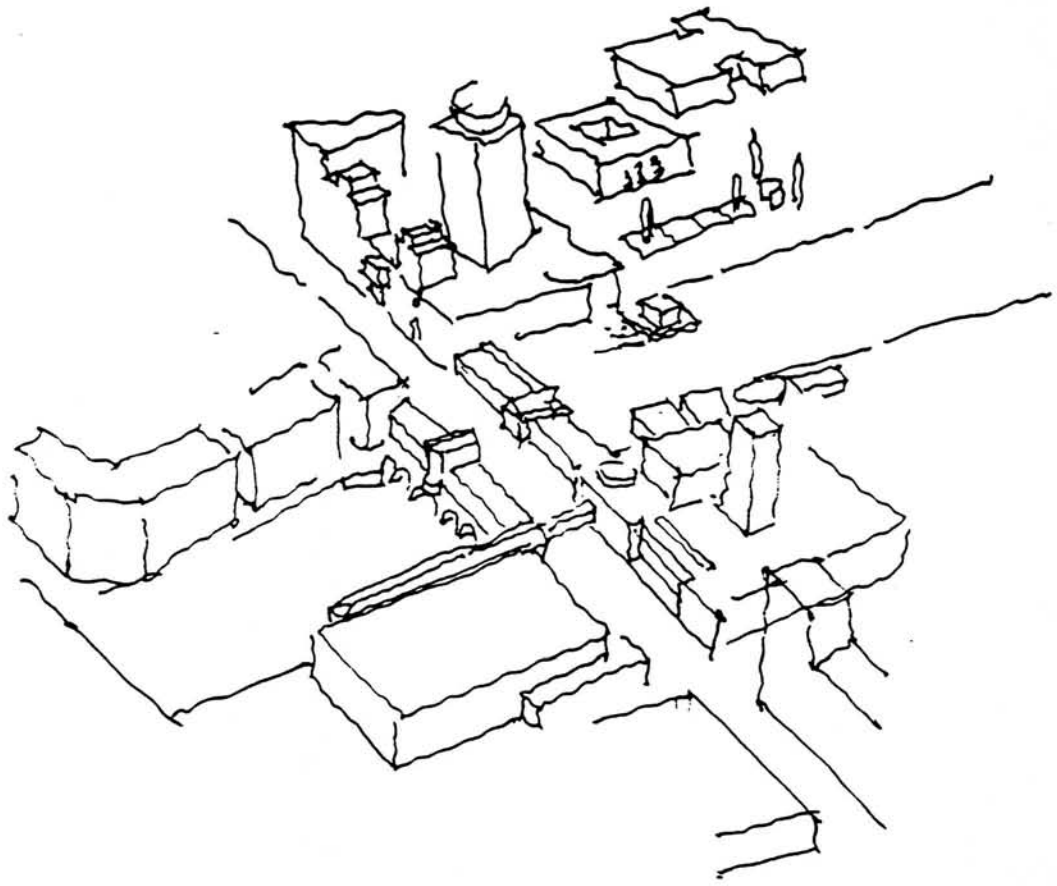


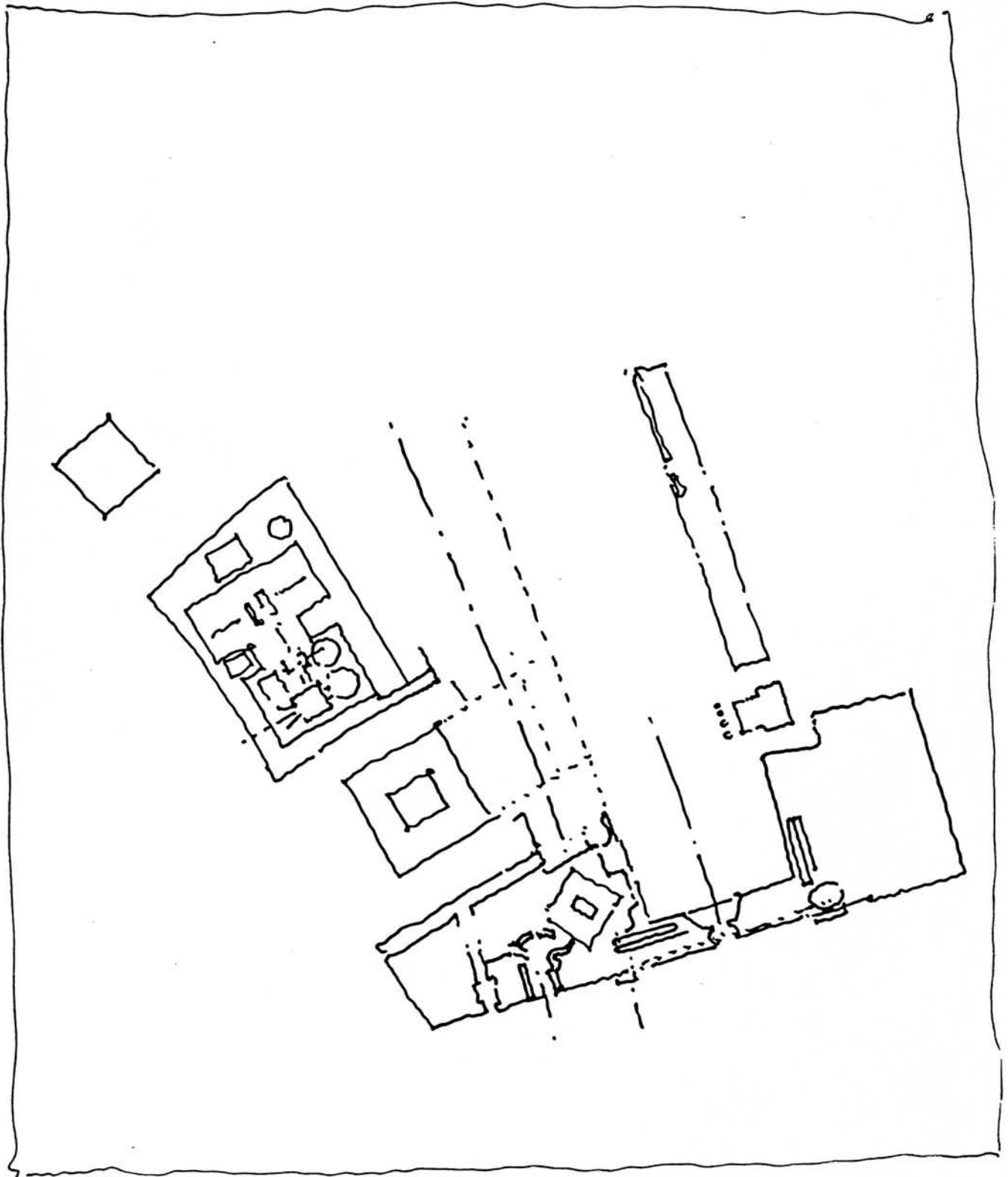


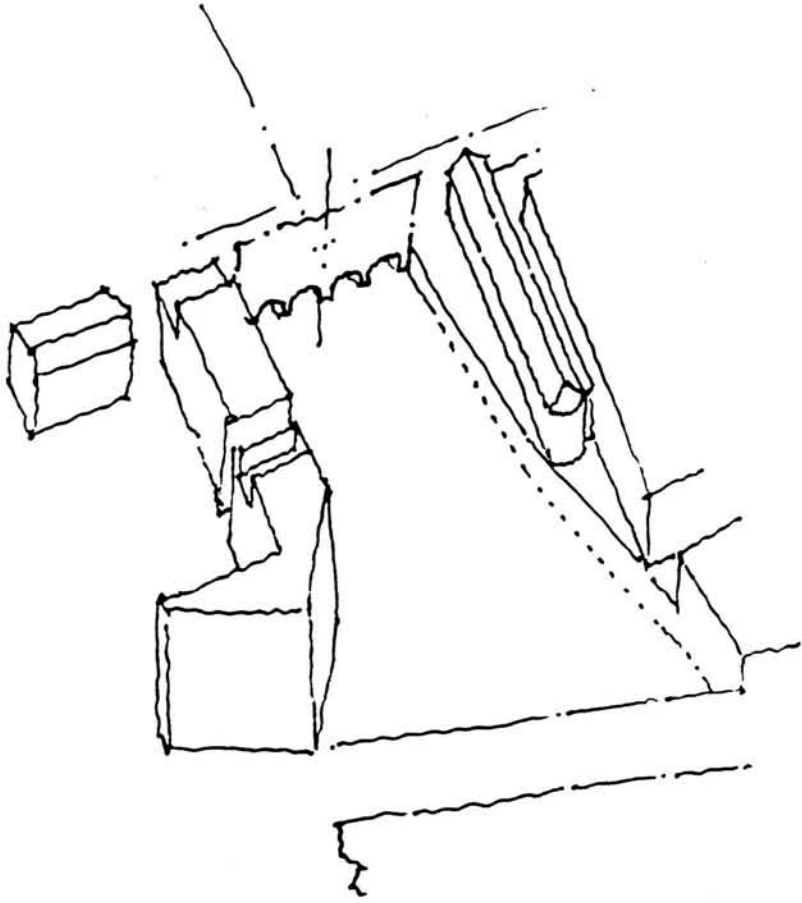


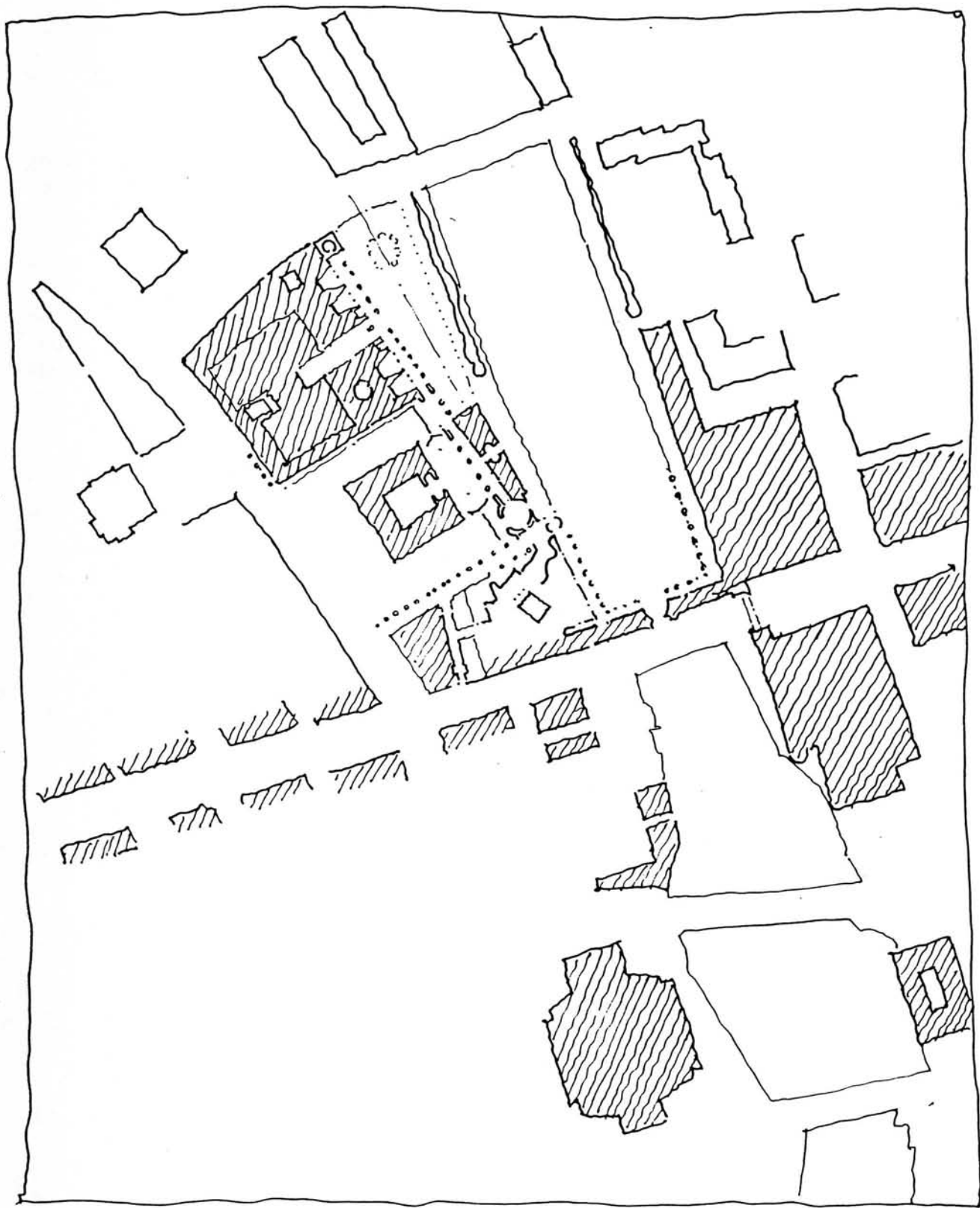


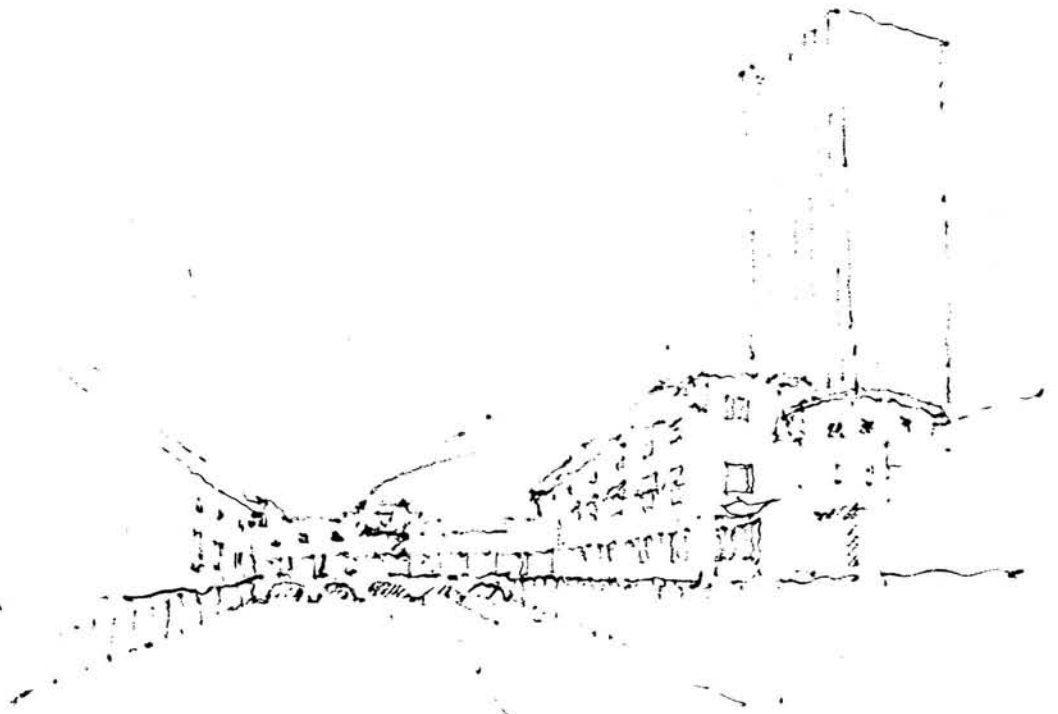


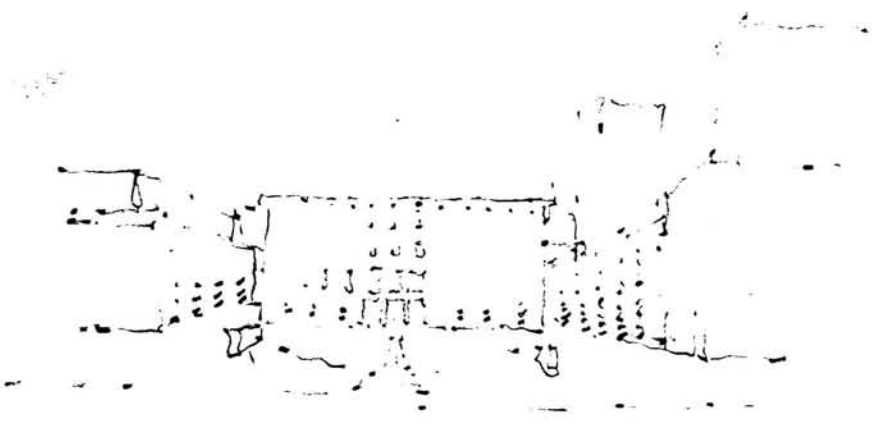


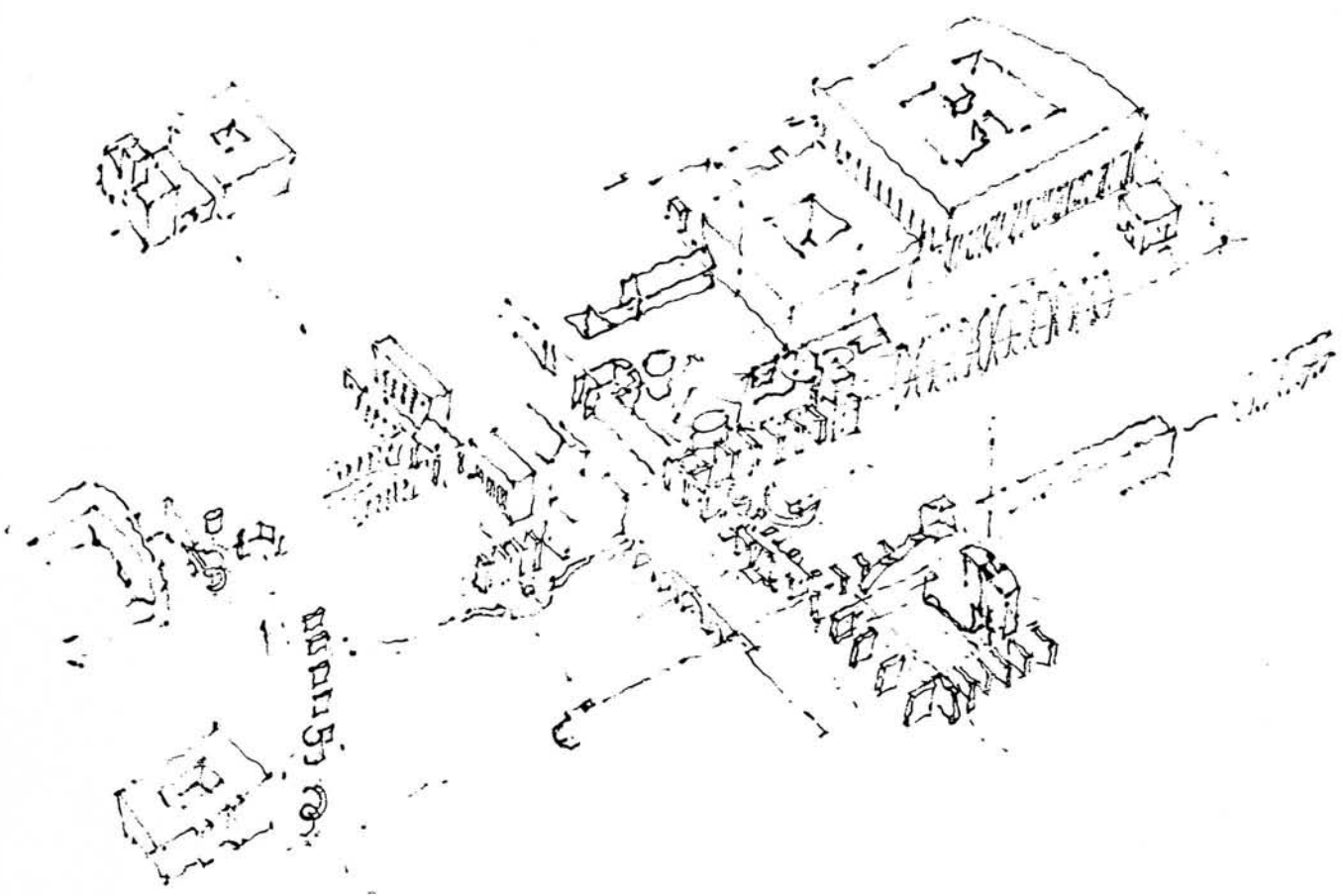








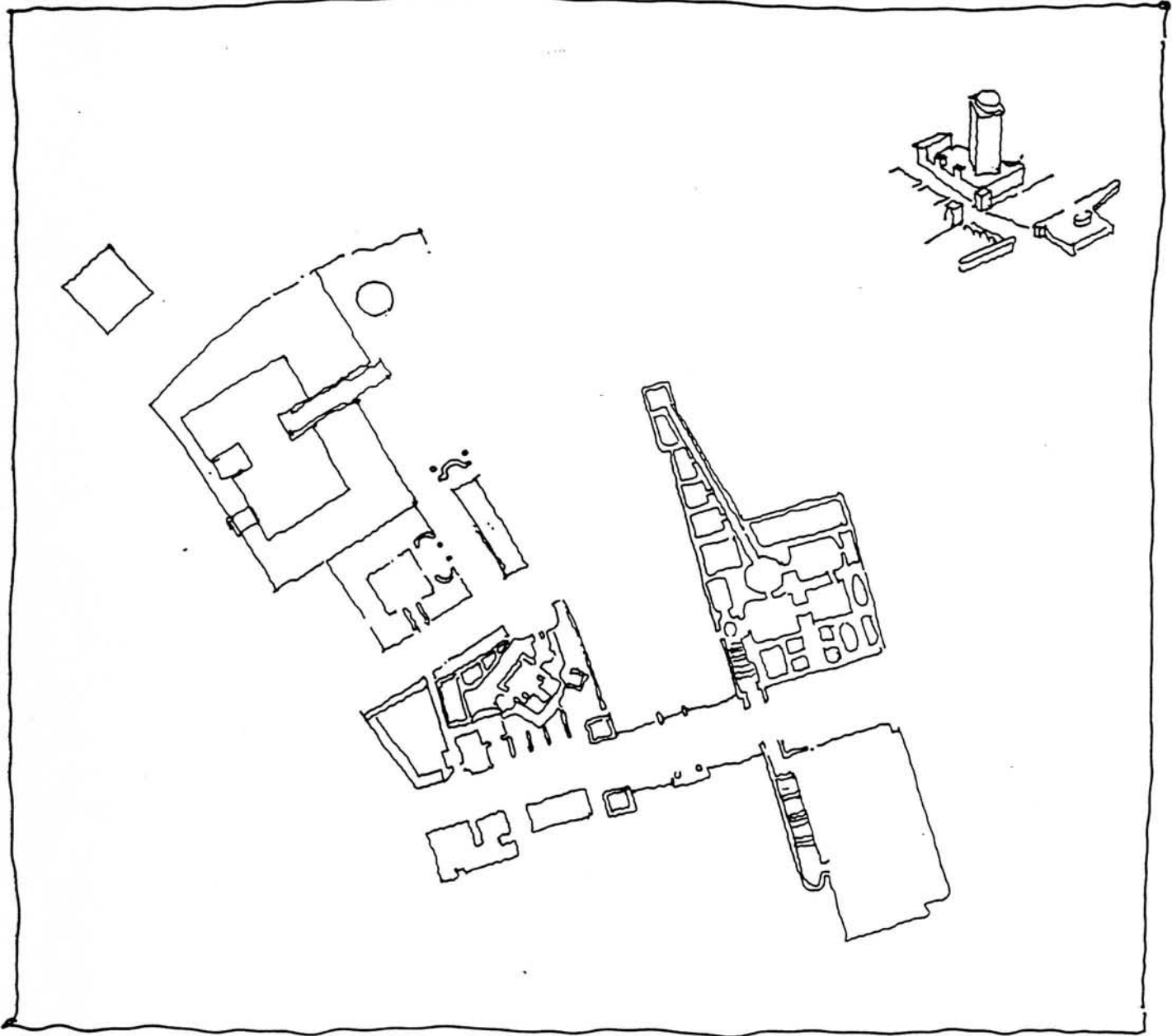


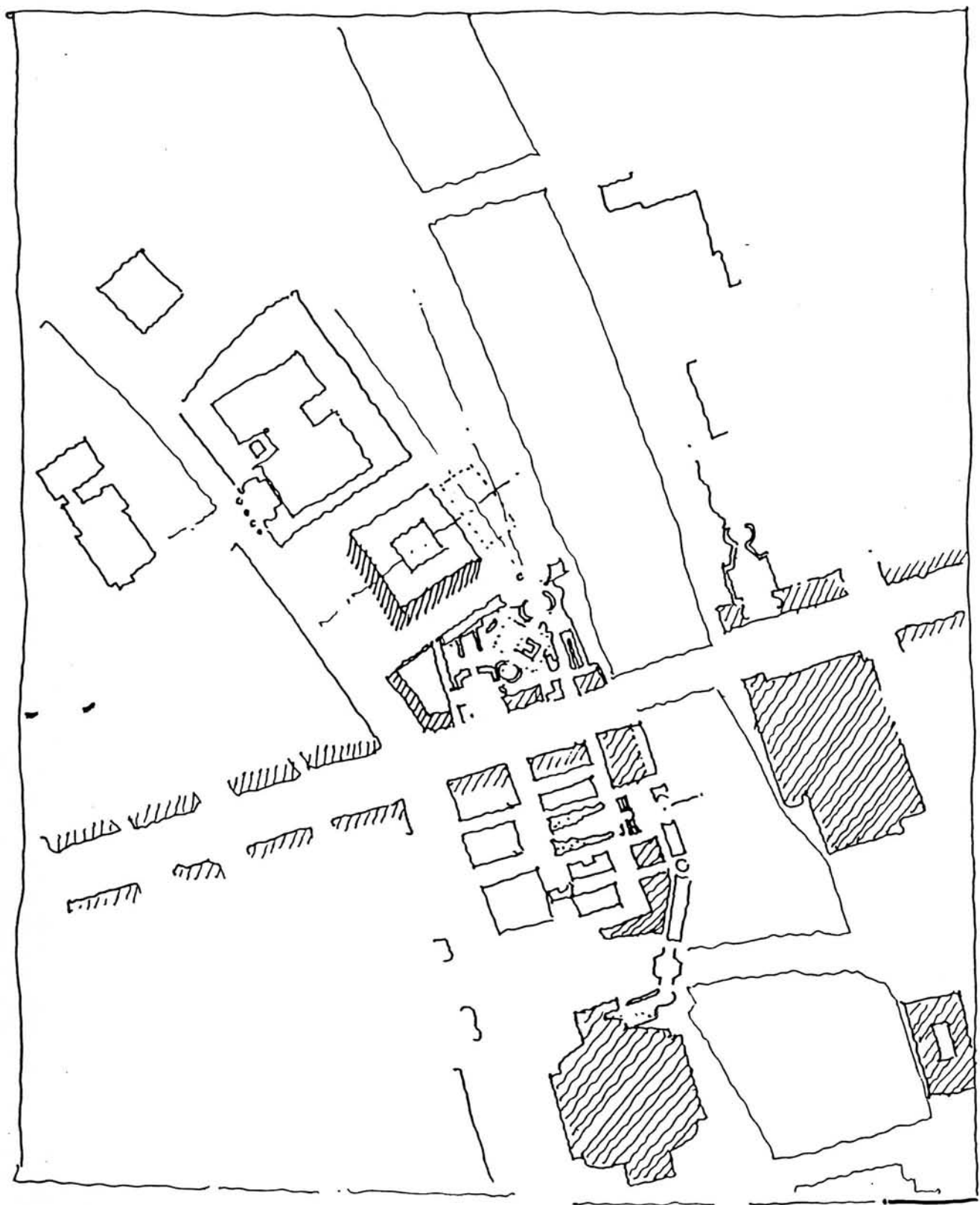


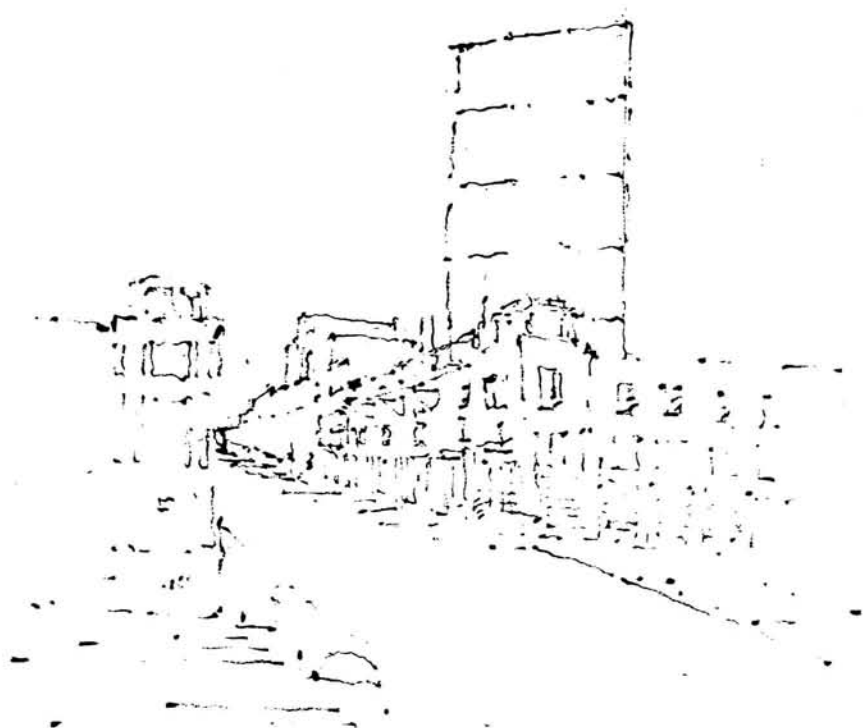
1885







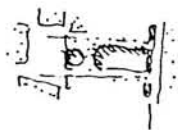
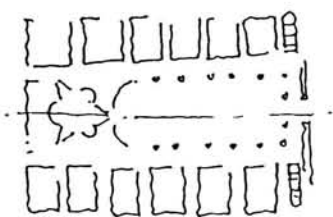
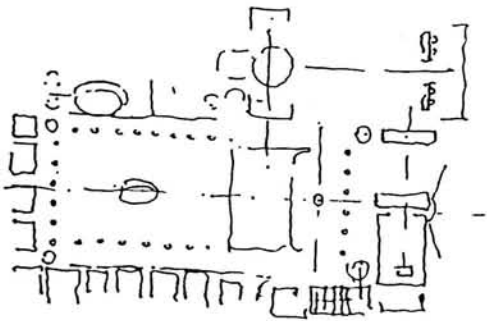
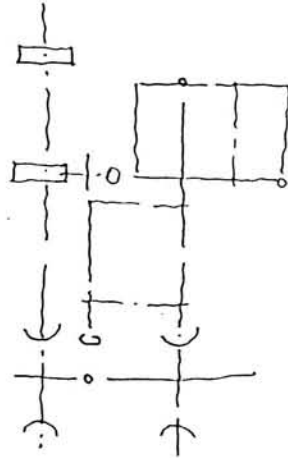
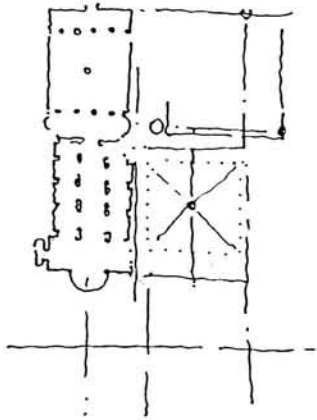
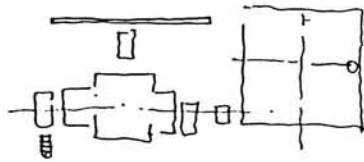
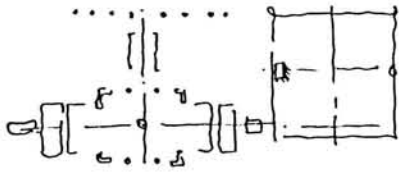
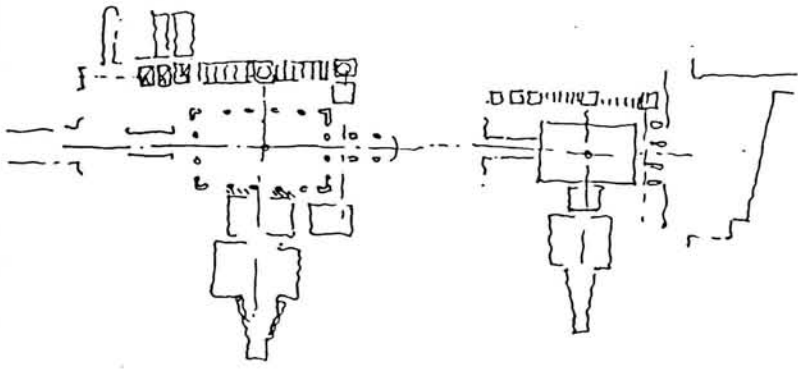


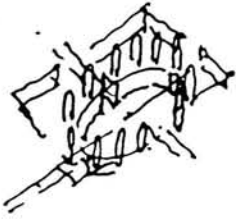












THE ROMANTIC FRAGMENT.

