

1996

## Dairy Digest 1995-1996

South Dakota State University Dairy Club

Follow this and additional works at: [http://openprairie.sdstate.edu/dairy\\_digest](http://openprairie.sdstate.edu/dairy_digest)



Part of the [Dairy Science Commons](#)

---

### Recommended Citation

Dairy Club, South Dakota State University, "Dairy Digest 1995-1996" (1996). *Dairy Digest*. Paper 18.  
[http://openprairie.sdstate.edu/dairy\\_digest/18](http://openprairie.sdstate.edu/dairy_digest/18)

This Article is brought to you for free and open access by the Dairy Science at Open PRAIRIE: Open Public Research Access Institutional Repository and Information Exchange. It has been accepted for inclusion in Dairy Digest by an authorized administrator of Open PRAIRIE: Open Public Research Access Institutional Repository and Information Exchange. For more information, please contact [michael.biondo@sdstate.edu](mailto:michael.biondo@sdstate.edu).

# Dairy Digest

South Dakota State University Dairy Club

Fourteenth Edition



**1995-1996**

# S D S U DAIRY BAR

CHEESE MAKES A GREAT GIFT ALL YEAR LONG

PROVIDING EDUCATION,  
TRAINING & SERVICE  
to STUDENTS and  
INDUSTRY

FOR MORE INFORMATION:

Dairy Science Department  
South Dakota State University  
Box 2104  
Brookings, SD 57007-0647  
(605) 688-5420





# 1996 Dairy Digest

14th Edition



# LEADERS

are made in

“CHILLY”

# SOUTH DAKOTA



South Dakota State University  
Dairy Club





## Table of Contents

Title Page . . . . .	1	Dean of ABS College . . . . .	18
Table of Contents and Index to Advertisers . . . . .	2	Department Highlights . . . . .	19
Editor's Message . . . . .	3	Dairy Club Members . . . . .	20
Dairy Digest Dedication . . . . .	4	Dairy Club Photo . . . . .	21
1995-1996 Executive Leaders . . . . .	5	Internships . . . . .	22
Dairy Club Advisors' Comments . . . . .	6	1996 Dairy Science Scholarships and Awards . . . . .	23
Scholarship Banquet . . . . .	7	1995-1996 Graduates . . . . .	24-26
South Dakota Dairy Princess . . . . .	9	Little I . . . . .	29
1995 Judging Teams . . . . .	10	Cheese Box Sales . . . . .	30
Club President's Message . . . . .	11	Send a Cow to College . . . . .	32
ADSA-SAD Conference . . . . .	12-13	Dairy Club Picnics . . . . .	34
Dairy Science Support Staff . . . . .	14	Dairy Club Hits the Ice . . . . .	36
State Dairy Laboratory . . . . .	14	Casino Night . . . . .	39
Plant Superintendent . . . . .	14	Club Picture Pages . . . . .	42-43
Graduate Students . . . . .	15	Autographs . . . . .	44
Dairy Science Faculty . . . . .	16		

## Index to Advertisers

21st Century Genetics . . . . .	8	Lakeside Dairy . . . . .	39
Alpha Gamma Rho . . . . .	33	Lauck Jerseys . . . . .	11
Alta Genetics USA Inc. . . . .	8	Leigh River Farms . . . . .	36
American Breeders Service . . . . .	35	Marigold Foods . . . . .	35
Associated Milk Producers, Inc . . . . .	29	Marschall Products . . . . .	4
College of Agriculture and Biological Sciences . . . . .	27	Michigan Milk Producers Association . . . . .	8
Ceres Women's Fraternity . . . . .	14	Mid-America Farms, Inc . . . . .	17
Church & Dwight . . . . .	Back Cover	Multi-Rose Jerseys, Inc . . . . .	33
Cross Roads Farms Dairy . . . . .	28	Pace Dairies . . . . .	19
Da-Co-Ton Holsteins . . . . .	35	Post Lane Holsteins . . . . .	30
Dairy Club . . . . .	16	Roche Animal Health . . . . .	40
Davisco International . . . . .	15	Scherping Systems . . . . .	Inside Back Cover
Del Dee Foods . . . . .	35	Schuch Family . . . . .	33
FarmHouse Fraternity . . . . .	39	SDSU Dairy Plant . . . . .	Inside Front Cover
FASCO . . . . .	35	Sharp's Inc . . . . .	17
Greg Holtquist . . . . .	6	Sire Power, Inc . . . . .	41
Hills Stainless Steel . . . . .	34	Stella Foods, Big Stone Division . . . . .	18
Hiland Dairy . . . . .	38	South Dakota Jersey Association . . . . .	38
Hunt-Wesson Foodservice . . . . .	11	Stoelting Inc . . . . .	7
Hy-Vee . . . . .	39	Summit Farms . . . . .	8
Iverson Ag Enterprises, Inc . . . . .	17 & 38	Valley Queen Cheese Factory, Inc . . . . .	31
Kalmes Farms, Inc . . . . .	6	Vir Kar J Swiss Farm . . . . .	20
Klenzade . . . . .	37	Watertown Holsteins . . . . .	9

# Editors' Comments

## IF IT'S NOT ONE THING, IT'S AN UDDER!

We are excited to present the fourteenth edition of the SDSU Dairy Digest. This year our club had a lot of extra activity in making preparations for and in hosting the Mid-West ADSA-SAD conference. After the conference it was time to complete another issue of the Dairy Digest. If it wasn't one thing to keep us busy, it was an udder! We would like to thank the yearbook staff for all their time and effort in helping us make this publication a reality. A special thanks to our advisor, Dr. Henning for the extra hours he put in to make sure we had the proper guidance we needed. Also a special thanks to our advisors Kirk Baldwin for helping out with photos and Karen Hilden for her proof reading expertise. We greatly appreciated the Dairy Club members who came to our Dairy Digest meetings to help us, especially when it got close to the printing deadline. Your interest will, hopefully, continue with future editions. Finally, but most importantly, we'd like to thank our advertisers for their financial support.

The Dairy Digest will be a keepsake for club members to read and reflect on their memories in the years to come. We hope you take time to sit back, relax, and enjoy the fourteenth edition.



## Yearbook Staff

### Co-Editors

Karen Schwartz  
Tena Cuperus

### Assistant Editor

Kelly Jonsgaard

### Advertising

Tena Cuperus  
Kelly Jonsgaard

### Contributing Writers

Kristin Anderson  
Jennifer Fieber  
Angela Jorgenson  
Angia Post  
Melissa Shumaker



# DAIRY DIGEST DEDICATION



KENNETH R. SPURGEON, Ph.D., Professor Emeritus, was born in Jasper County, Indiana on August 1, 1918. Dr. Spurgeon earned his BS in Dairy Husbandry from the Purdue University in 1942, his MS in Microbiology and Dairy Science also from Purdue University in 1948 and his Ph.D. in Dairy Manufacturing from the University of Wisconsin-Madison in 1951. Following his student days, Dr. Spurgeon worked for The Wander Company, M & M Candies, and Spencer Milk Products before joining South Dakota State University as an Associate Professor in 1958. Dr. Spurgeon has remained active in department activities and has been a co-coordinator of the Cooperative Education-Internship program since his retirement. The internship program has been highly successful in adding a vital dimension to the manufacturing students' education. His work not only prepares the students

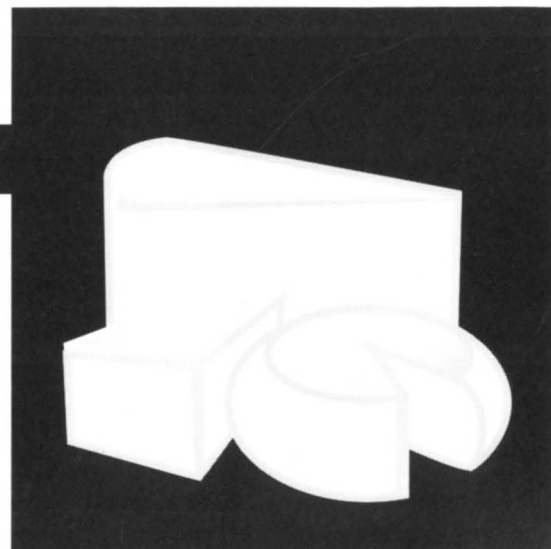
for their responsibilities to the company; he also informs the company about the goals and objectives of the internship program to ensure a quality educational experience. In 1985, Dr. Spurgeon was the recipient of the Gamma Sigma Delta Outstanding Teaching Award, which identifies him as one of the top teachers in the College of Agriculture and Biological Sciences at South Dakota State University. Dr. Spurgeon has taught the following courses during his tenure at SDSU: Processing I, Processing II, Technical Control of Dairy Products I, Technical Control of Dairy Products II, Dairy Plant Management, and Dairy Microbiology. Dr. Spurgeon's professional affiliations and activities included membership in the American Dairy Science Association, Institute of Food Technologists, International Association of Milk, Food and Environmental Sanitarians, American Cultured Dairy Products Institute, South Dakota Environmental Health Association, and South Dakota Dairy Association.

## RHÔNE-POULENC CELEBRATES

PROUD OF OUR PAST  
20  
FOCUSED ON THE FUTURE

YEARS

OF MARSCHALL  
QUALITY & INNOVATION



 **RHÔNE-POULENC**

DAIRY INGREDIENTS

P.O. BOX 592  
MADISON, WI 53701-0592  
(608) 231-1888  
FAX (608) 231-2443



# 1995 - 1996 Executive Leaders

1996



Left to Right: Karen Schwartz, Secretary; Jennifer Fieber, Treasurer; Tena Cuperus, President; Angie Post, Vice President; Kelly Jonsgaard, Historian. Absent: Laurene Soukup, Historian.

1995



Left to Right: Karen Schwartz, Historian; Pat O'Reilly, Treasurer; Kristin Anterson, President; Jenny Scheffel, Secretary; Dana Metzger, Vice President; Tena Cuperus, Historian; Jeffrey Schmit, Historian.

## Dairy Club Advisors' Comments

**KIRK A. BALDWIN** Again this year our Dairy Club has been one of the most active clubs on campus. The three big annuals: Dairy Digest, Cheese Box Sales and Spring trip were all successful. The club took on more responsibility this year and hosted the regional ADSA-SAD conference. Activities of the SDSU Dairy Club allow student members to show their abilities at planning and leadership. Every job, whether big or small, lets students represent the university, the college, and most importantly, the Dairy Science Department.

**E. KIM CASSEL** It has been a great year to serve as one the advisors for the Dairy Club! The club is to be congratulated on hosting the very successful ADSA-SAD for the Mid-West region. The job you did will be a tough act to follow for years to come. This has been a year for the talents of many to shine via the various club projects, whether it be the ADSA meeting, cheese box sales, designing the ADSA tee-shirt, or providing entertainment for the club activities. The dairy industry has a bright future with club members like yourselves leading the way as you embark on your careers in the dairy industry.


**DAVID R. HENNING** This was a particularly exciting year for advising the Dairy Club. The Regional ADSA-SAD Conference planning was a real team builder for the club. The executives of the club did an outstanding job of organizing and ensuring a successful meeting. Many club members



Front: Kim Cassel and Karen Hilden. Back: Dave Henning and Kirk Baldwin


contributed to the detailed work which makes the difference between success and failure. The other club functions of this past year were completed successfully also.

**KAREN J. HILDEN** This was a fun year to serve as a Dairy Club advisor. Having been a former member of the Dairy Club, it was an honor for me to be able to stay active in the club as one of the advisors. It was very exciting to be a part of the club in hosting the Midwest Regional ADSA-SAD conference. The members did an excellent job and put in hours of hard work. We have a fun, close-knit group of students that make the Dairy Club the success that it is. You all have made my first year as an advisor very memorable and I wish everyone the best of luck in the years to come.



**KALMES FARMS, INC.**  
ROLLINGSTONE, MN

**BOB, BETTY, PATRICK, LEANNE, PAUL  
EUGENE, AND BETTY CONGRATULATE  
THE 1996 SDSU DAIRY SCIENCE MAJORS!**



**DAIRY INGREDIENTS, INC.**

GREG HOLTQUIST

PHONE [313] 370-0100  
FAX [313] 370-0113

2650 PALDAN  
AUBURN HILLS, MI 48326

## 1995 Scholarship Banquet Kristin Anderson

The SDSU Dairy Science Department held its annual banquet in April at the Brookings Holiday Inn. Another great turnout this year! An eventful agenda was provided for the banquet.

The master of ceremonies was Past President, Shawn Stoley. Dr. John Parsons, head of the Dairy Science Department, gave the welcome. Also speaking was Lynn Iverson, South Dakota Dairy Princess. Scholarships were given out to nearly 35 students to help them continue their education in the Dairy Science department.

Entertainment was provided by our very own country music star, Lucas Lentsch. A very talented crowd pleaser, Lucas put on a wonderful show. Although he got caught singing to John Sleggs, turning them both 10 shades of red!

Dr. Mike Brouk and Dr. Bob Baer highlighted the Dairy Cattle and Dairy Products judging teams. The evening ended with the distribution of the 1994-1995 Dairy Digest.



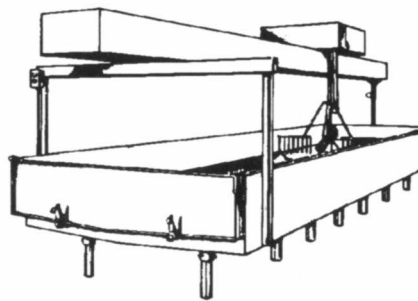
The 1995 Dairy Digest staff introduces the 13th edition



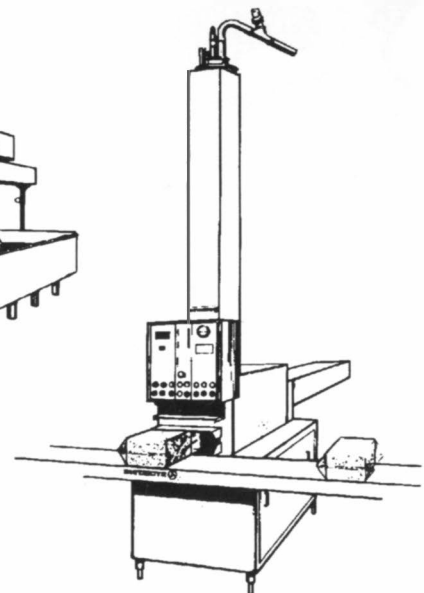
Lucas Lentsch sings a medley of song to entertain

## WE'VE BEEN MAKING TOP-QUALITY CHEESE PROCESSING EQUIPMENT FOR 90 YEARS

- Cheese vats...open, enclosed, or specialty
- Rugged curd tables
- All stainless steel agitators with variable frequency drives
- Superior performance block formers
- *Cheesemaker*...enclosed draining, matting, milling, salting belts
- Air/vacuum conveying
- Special process/material handling equipment
- Complete systems



Curd Table with Sanitizer



Block Former

 **STOELTING**  
502 Hwy 67 Kiel, WI 53042  
(800) 558-5807 or (414) 894-2293



# “Congratulations Dairy Club Members On Another Outstanding Year!”

Just as 21st Century Genetics offers smart sire choices for results you'll prefer, you, too, made a smart choice by choosing to attend SDSU.

Your experiences in college will prepare you to be a better leader in the dairy industry, no matter what your specific area of interest may be. Involvement in the Dairy Club teaches those skills and participation in club activities will be some of your best memories during your college years.

Dedicate yourself to help keep the SDSU Dairy Club activities important parts of a student's college education.



## SUMMIT FARMS INC.

Metzger Family Corporation

Don	Alvin	Art	Harvey	Rodney
478-4441	472-3024	478-4465	478-4627	478-4361



Box 9 • 1334 Dove Avenue • Lester, IA 51242 • (712) 478-4344  
*Registered Jerseys*



## Alta Genetics USA Inc.

*Landmark Division*

**Gerald Feikema**  
*District Sales Manager*

2210 S. 16th Avenue W.  
 Brookings, SD 57006-7070  
 Phone: (605) 693-3434  
 Fax: (605) 693-3435



**Michigan Milk Producers Association**  
 41310 BRIDGE STREET • P.O. BOX 8002 • NOVI, MI 48050-8002

WALTER W. WOSJE  
 General Manager

**810-474-6672**

## South Dakota State Dairy Princess Jennifer Fieber

In September, I received a very important, but fun and educational occupation. I was crowned the 1996 South Dakota State Dairy Princess. This began a long, yet exciting, year of my representing South Dakota's 1,700 dairy farmers and the American Dairy Association.

Throughout the year, I made several appearances including open houses, parades, farm shows, dairy shows and sales, and many other special appearances. I spend my time and energy answering questions and promoting the dairy industry and its many products.

When I'm not traveling across the state making appearances, I'm a sophomore at South Dakota State University pursuing a degree in Dairy Manufacturing. Activities I am involved in include being the treasurer of the Dairy Club, Collegiate 4-H Club, Little I staff, and Ceres fraternity.

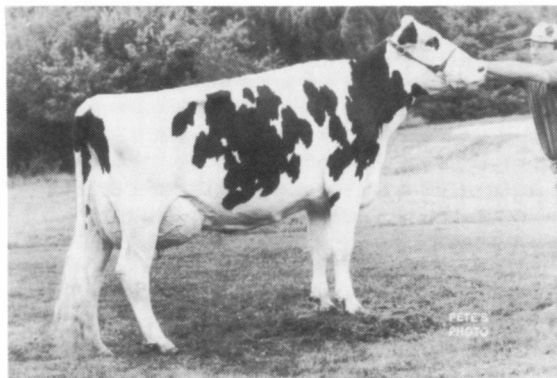
I'm originally from Goodwin, SD. I've lived on a dairy farm my entire life. I have a very great knowledge of the dairy industry and hope that throughout the year I can express that knowledge to others.

I've really enjoyed myself this year. I've had so much fun and have met many interesting people. I think my role as the Dairy Princess is a very important one. I inform the consumers and the public about the nutritional importance of dairy products.

I think that they respond better to personal promotion of products rather than to an advertisement on television. I'd like to thank everyone in the Dairy Science department for all the good times throughout the past year. Just think, only two more years. I'd also like to thank the Dairy Club for a great year and the entire Dairy Digest staff for another great edition.



### *A RISING STAR*



*Watertown Nick Star VG 87 Ex-MS*  
*2-00 365d 25,350 3.4% 869f 3.3% 825p*  
*3-07 197d 18,110 3.5% 630f 2.9% 523p*

Due in October to Southwind. Has a fresh Chesapeake that looks like she will follow in her mother's footsteps. Star's mother is an excellent Mellow daughter with 30,000 milk, recently fresh with a Wa-del Mystique heifer. This is the type of cow we are striving for at Watertown Holsteins, ones that produce and reproduce generation after generation.

#### *Watertown Holsteins*

"9 Years of Progressive Breeders Registry"

Randy Schweer  
Rt. 4, Box 49  
Watertown, SD 57201  
(605) 886-5967

Recent Classification  
107-12 Excellent

Larry Munger  
Rt. 4, Box 48  
Watertown, SD 57201  
(605) 886-6443



## 1995 Judging Teams



Left to Right. Chad Larsen, Pat O'Reilly, Eric Thompson, Coach Bob Baer.

### **Dairy Products Judging Team Dr. Robert Baer**

The 1995 Dairy Products Judging Team placed 3rd in All Products out of 9 teams in the Midwest Regional Contest held at Kraft in Glenview, IL, on October 21. Six dairy products that are evaluated at the contest include milk, cottage cheese, Cheddar cheese, vanilla ice cream, strawberry yogurt, and butter. The team placed 2nd in cottage cheese, 3rd in Cheddar cheese, and 3rd in butter. Individually, Chad Larsen (Huron) placed 2nd in butter and Pat O'Reilly (Canby, MN) was 2nd in All Products. Other team members included Eric Thompson (Bruce), Keith Johnson (Beresford), and Mike Noble (Ipswich). The team was able to tour the Kraft Research and Development pilot plant, research laboratories, and product development facilities.

On November 6, the team participated in the National Contest held at the McCormick Place in Chicago, IL. The team placed 3rd in All Products out of 14 teams, was 1st in ice cream, 2nd in yogurt, and 4th in butter. Individually, Pat O'Reilly was 4th in butter, 5th in yogurt, and 5th in All Products. The team had a successful year and was very competitive in both the Regional and National contests.

For 1996, the National contest will be held in Dallas, TX. The team is coached by Bob Baer, Professor of Dairy Science.



Left to right: Brian Sharp, Kristin Anderson, Jeffrey Leuthold, Coach Mike Brouk.

### **Dairy Cattle Judging Team Dr. Mike Brouk**

This year marked the 75th National Collegiate Dairy Cattle Judging contest. South Dakota State University has entered in 67 of those contests. Team members this year were Kristin Anderson, Mt. Zion, IL; Jeff Leuthold, Ellsworth, MN; and Brian Sharp, Bath, SD. The team competed in the Accelerated Genetics' intercollegiate dairy cattle judging contest held in Viroqua, WI and the national contest held at Madison, WI in conjunction with the World Dairy Expo.

Two short weeks after starting school, the team was at the Accelerated Genetics' contest. Brian Sharp led the team, placing 4th individually in the Jersey breed. Upon returning to Brookings, the team concentrated on oral reasons and prepared for the national contest, which was only two weeks away. The team joined other teams from around the nation for practice at several Wisconsin farms just prior to the national contest. The hard work of the team resulted with an improvement in reason scores in a much more competitive contest, as compared to the earlier contest. The team was coached by Dr. Mike Brouk, Assistant Professor of Dairy Science.



# President's Comments

**Kristin Anderson**

The past year brought many exciting and challenging events to the Dairy Club. We were honored to be the host for the 1996 Mid-West Regional American Dairy Science Association conference, held February 9th and 10th. What an eventful weekend. I can honestly say, that was the biggest event I have ever helped plan! I would like to thank the Dairy Club for all their hard work and dedication.

In the midst of planning the conference, the club had many other activities. These included: Spring Dance, Spring and Fall Picnics, serving ice cream at various functions, Cheese Box Sales, Ice Skating, Little International, Ag/Bio Career Days, and last but not least, monthly meetings!

My dearest thanks goes out to my fellow officers: Dana Metzger, Jenny Scheffel, Angie Post, Patrick O'Reilly, Tena Cuperus, Karen Schwartz, and Jeff Schmidt for their support and understanding. Serving as President was a new hill for me to climb. To our Advisors: Dr. Dave Henning, Kirk Baldwin, Dr. Kim Cassel, Karen Hilden, and Gene Stegeman who were not always informed of which direction I was headed. Thanks for your guidance, support, and dedication to us. Most importantly, I would like to thank the Dairy Club members. Without them we would not have been able to achieve the goals we set.

I have learned a great deal about responsibility and being a leader of an organization such as ours. I would like to thank those of you that made it possible for me to grow, and may I carry these leadership skills into my future never forgetting these roots. Best of luck to the SDSU Dairy Club and the new officers. Have a great year!



**Hunt-Wesson  
Foodservice Company**  
Industrial Sales

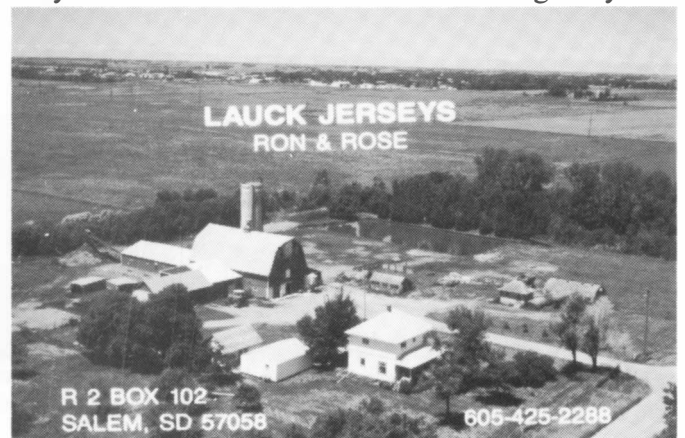
**When it comes to caramels  
and fudges, we'll deliver  
exactly what you need.**

- + Caramel and Chocolate variegates.
- + Regular or fat free - we do both.
- + Custom Formulation for the exact texture,  
taste and appearance you need.
- + Kosher Certification.
- + Industrial size packaging... 50# box or pail,  
50-gallon fiber drum and totes.
- + Over 100 years experience.

2239 Edgewood Avenue S.  
St. Louis Park, Mn 55426-2881  
612-525-9221  
FAX 612-525-9274

**CRAIG BYERS**  
Technical Sales Manager  
Office 612-444-7478  
FAX 612-444-7478

a Hunt-Wesson, Inc./ Con Agra Company



## SDSU Hosts ADSA - SAD

Kristin Anderson

On February 11, 1995 South Dakota State University volunteered and was voted in as host school for the 1996 Mid West Regional American Dairy Science Association Student Affiliate Division annual conference. Proudly we accepted this honor, not knowing what lay ahead in the year to come!

After returning back to SDSU from Illinois, our first task was to set a date for the conference. My first question was, "Did everyone realize how cold it could possibly be in South Dakota during the month of February?" - generally the month of the conference. A date, however, was chosen for February 9th and 10th. I contacted the Brookings Holiday Inn in order to reserve the convention center and rooms for the weekend.

The plans continued throughout the Spring semester in order to be prepared for the hard core planning that would take place in the fall. After a summer of wondering if we could actually pull this off, we were back in school. September seemed to be a slow month for planning efforts. Letters were mailed to all the schools in order to let them know we were thinking about the plans! A second letter was then mailed for registration purposes.

While we were waiting for each school to register, the most important plans were being conquered. Letters were mailed out to possible donors asking for donations that could help make this event a success. Entertainment, food, quiz bowl, farm tours, name tags, agendas, t-shirts, budgets, meeting rooms, assigning committees, and you name it, were other items that we had to think about. I didn't realize how many things actually went in to planning this conference.



Tena Cuperas, Melissa Shumaker and Angie Post are prepared to register participants.



Lucas Lentsch performs his magic at the Banquet

Oh my - its December! What are we doing? What aren't we doing? It seemed as if the time was running away from us and we were having a hard time catching up. Good thing it only seemed that way. By this time, we had the entertainment for the dances (but no dance hall for Friday Night!), plans for farm tours, donations coming in, and committees working very hard at their assigned jobs. Christmas Break was nearing and I felt good about the progress we had made, although I felt as if our advisors were still a little nervous!

January 10th brought school back in session and only ONE month away from the big weekend. We had solved our dance hall problem with the great help from the Holiday Inn. Now, our only other worry was what we were going to feed 300 people for lunch on Saturday. My assistant, Tom Schuch, was getting rather discouraged in trying to find the best meal for the best price. I had no doubt in my mind that his creativeness would come through in the end, and I was right.

Registration forms were now in from 10 universities throughout the Mid-West. Illinois, Iowa, Kansas, Ohio, Michigan, Minnesota (St. Paul and Crookston), and Wisconsin (River Falls, Platteville, and Madison) were the schools registered. We had nearly 300 people registered, some traveling more than 900 miles. A follow up letter was mailed out to inform everyone of the

agenda for the weekend. This was an exciting time for everyone involved.

Finally, February 9th arrived and it was time to put our plans to work. After a starving attempt to pass a Tech II test, the weekend could begin! We held farm tours on Friday morning and afternoon at the Fieber and MoDak farms near Watertown. It was a very beautiful day on Friday and everyone seemed pleased with the tours.

Registration at the Holiday Inn took place from 2 - 5 pm. Then came the event of the weekend - QUIZ BOWL! The moment we had all been waiting for. Not even 30 minutes before start, I had to run to Wal - Mart to get black markers to keep score with. I guess they are right when they say you always forget something. The quiz bowl ran very smoothly, ending the night with University of Illinois and University of Wisconsin - Madison to battle on Saturday. Following the quiz bowl was a dance from 9 - 1, and that is all I will say!

The business meeting began Saturday morning at 9 am. We were honored to have Dean David Bryant of the College of Agriculture and Biological Sciences and Dr. John Parsons, Dairy Science Department Head, present to give a warm SDSU welcome. The National ADSA President, Ron Richter gave an update on ADSA after the welcome. (A somewhat short speech, due to the Cotton Eyed Joe the night before!) A few words were also given from our very own Dairy Princess, Jen Fieber. The meeting went smoother than any other ADSA meeting has ever gone, probably not having anything to do with the fact it was run by all women!

Following the meeting, we had lunch provided by Gorden's Meat Market. I have to thank Tom for that good planning!! After lunch was the final quiz bowl competition with Illinois coming out on top. Even though it was snowing out (naturally warm one day and cold the next) we were able to have farm tours at Post Lane Holsteins, Piries Dairy, and the SDSU dairy farm. In spite of the cold weather, the tours were a success.

The weekend was drawing to a close, as we filtered into the convention center for the annual banquet. It was an honor to have our SDSU President Robert Wagner to give the keynote address. Being the dynamic speaker that he is, he kept everyone very alert and involved. We then provided a gift of our very own, the talented Lucas Lentsch. Never have I seen so many girls melt, so

many guys in awe, and dollar bills being waved in the air. Nor had I ever seen Lucas put his arm around a guy and sing to him before - good thing he's married!!

Following a very successful banquet, was another fun filled dance. I can honestly say that it was great to see so many people from different places getting along and having fun. The dance was finally put to a close at 3 am, OOPS! I guess you lose track of time when you are having so much fun!

The conference has been over for 2 weeks, but if you are new to town you would think it was still going! Yes, the neon signs pointing people in the right direction are still hanging on the street poles! I guess I'm so proud of what the Dairy Club accomplished that I don't want to take them down

I would like to thank everyone that made this conference a success. I would especially like to thank Tom Schuch, my assistant and confidant, Kim Cassel for all the time she put into farm tours and the quiz bowl, Dr. Henning for all his help, and keeping me on my toes, Kirk Baldwin for his ever needed support, Dr. Mistry, Dr. Brouk, Gene and Donna Stegeman for their help with the quiz bowl, and mostly the Dairy Club members. Without your help and dedication, this conference would not have been the success that it was. This ADSA-SAD meeting was one of the best ever, and it was all because of you!

I would also like to thank our donors. Their contributions were greatly appreciated.



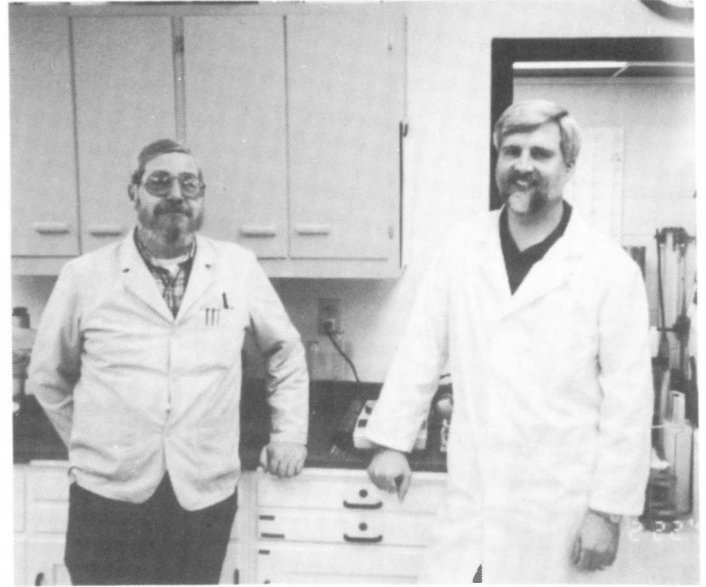
Gene Stegeman, Instructor and Herdsman, gives a tour of the Dairy Research and Training Facility to visiting students.

## Dairy Science Support Staff



Left to Right: Front - Peggy Steen, Karen Mohan, Jayne Raabe. Back - Helen Rollag, Joanne Mauseth.

## State Dairy Laboratory



Left to Right: Armie Appelt and Bill Northeimer

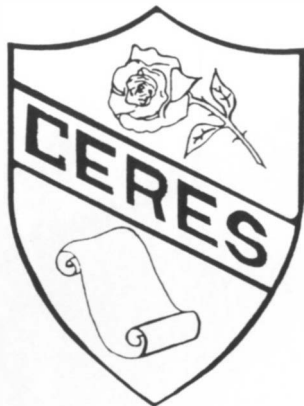
## Plant Superintendent



Karen Hilden

## Ceres Women's Fraternity

*Brand new on campus, Ceres chartered  
on November 23, 1991.*



Commitment, Agricultural Orientation, Leadership, Fellowship, and Scholarship, join Ceres women together like sisters.

*For more information, call the  
Ceres House at 697-6978*



## Dairy Science Graduate Students



Left to Right: Front - Mary Jo Boner, Li An, Nagarathna Krishnaswamy, Nathanon Trachoo. Back - Raju Bangalore, Donna Stegeman, Laura Turner, Dana Hammell, Michael Piepenbrink, Devang Raval, Vinith Poduval. Absent: Ann Crosser, Todd Hieb, Jennifer Nichols, Jonathan Ysdtie.



# DAVISCO International

Manufacturers of Fine Food Ingredients

408 Dakota Street • P.O. Box 169 • Lake Norden, SD 57248  
Telephone: (605) 785-3683 • FAX (605) 785-3278



*Wishing all the graduates  
the very best of luck!!!*

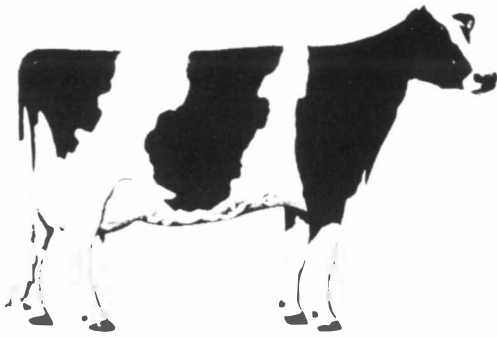
*May the road you take be all that you  
ever imagined and more, and may all your  
Dreams and Wishes come true.*

*The South Dakota State Dairy Club*

### **Dairy Science Faculty**



Left to Right: Front - Yong Kook Kim (Visiting Professor), Kirk Baldwin, John Parsons, Dave Schingoethe. Back - Bhushan Jayarao, Gene Stegeman, Dave Henning, Vikram Mistry, Sharon Franklin, Mike Brouk, Bob Baer. Absent: Kim Cassell



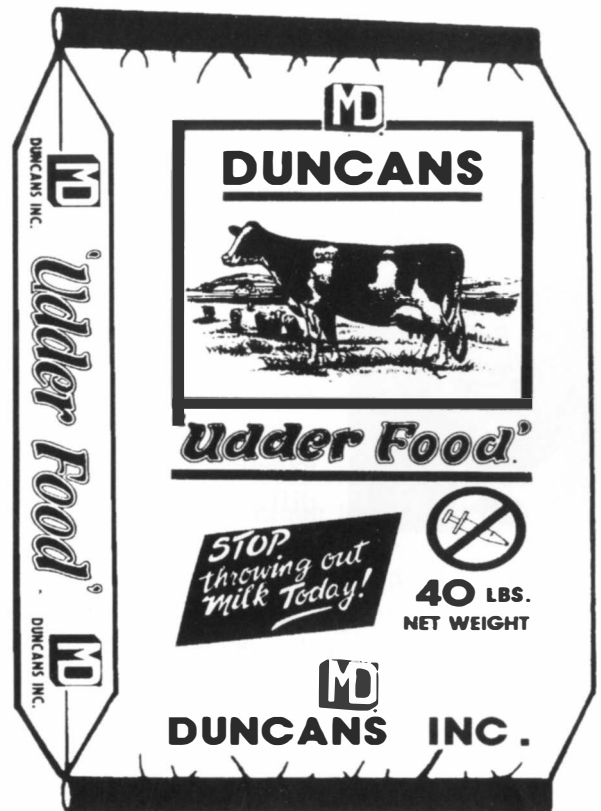
*Sharp's, Inc.*

**TOP QUALITY DAIRY CATTLE SINCE 1942**

39353 - 133rd Street  
BATH, SOUTH DAKOTA 57427

Office: 605/225-8904 Gary: 605/229-5231  
Fax: 605/225-5199 Bob: 605/225-7519

*Breeding Cattle for Sale at All Times*



**IVERSON AG ENTERPRISES**  
Flandreau, SD 57028 • 605-997-2364

## How to make your dairycase produce cold, hard cash.

Know how to get more profits out of your dairycase?

Stock it with Mid-America Farms dairy products. The rest is easy.

You see, shoppers prefer the farm fresh taste of Mid-America Farms dairy products. After all, what else goes with so many foods in so many different recipes?

So remember, what you get out of your dairycase depends on what goes into it. In this case, Mid-America Farms dairy products.



**MID-AMERICA FARMS, INC.**

Home Office  
Springfield, Missouri  
(417) 865-7100



## Dean's Comments

**Dean David A. Bryant**  
**College of Agriculture and Biological Sciences**



Our Dairy Science students did an impressive job of hosting the Midwest Regional ADSA Student Conference this year in Brookings. Kristin Anderson and her committee set a standard of excellence that will be difficult for next year's hosts to match.

One of the banquet highlights was the presentation of boxes of "Campanile Line" smoked, aged Cheddar cheese to the officers and advisors of the Student Affiliate Division. Other popular cheeses produced by our students in the SDSU Dairy Processing Plant include Mild Cheddar, Bacon Cheddar, Monterey Jack, Swiss, Smoked Swiss, Colby, Cojack, Jalapeno and Smoked Jalapeno.

New students are required to work for three credits in either the dairy plant or at our new production unit, the SDSU Dairy Research and

Training Facility. Here, they obtain valuable hands-on experience related to their career option. We have one of only three departments in the U.S. with both Dairy Manufacturing and Dairy Production degrees. Approximately half of our students obtain additional experience each summer by working in dairy plants or on dairy farm operations.

The Dairy Science scholarship program also represents significant dairy industry support for our students through 52 scholarships and awards totaling over \$28,000.

The teaching programs include dairy products and dairy cattle judging teams that place regionally and nationally each year. Supporting teaching and rounding out the Dairy Science department, is an outstanding Dairy Extension and Research program that benefits the producers and consumers of South Dakota and the region.

I'm very proud of our Dairy Science students, faculty, and staff, and the many contributions that they make to ensuring a sound future for our dairy industry in South Dakota and the upper midwest.



*Leader in the Curing, Finishing, and Packaging  
of Aged Cheese Products*

Big Stone City, SD 57216-0008

Phone: 605-862-8131

## SDSU Dairy Science Department Highlights

### Dr. John Parsons

The new Dairy Research & Training Facility, after one year of operation, has proved to everyone that new concepts do work! I heard several dairymen comment that those curtained sidewalls would never hold up to our weather. Well we have just come through a winter season that really tested everyone with 70 mph winds and temperatures of -30°F. The new structure performed very well except for a few asphalt shingles that blew off in the wind. The new dairy waste lagoon was finally completed and put into use December 1, 1995. Milk production continues to increase and is now at 18,900 lb./cow.



Gene Stegeman, Instructor and Herdsman, describes the Dairy Research and Training Facility to students

We signed an agreement with the Brown Swiss Cattle Breeders' Association of the USA to "Send A Cow To College". Dr. Mike Brouk coordinated the project in which the Brown Swiss Association will donate 60 bred heifers, 18-21 months of age, to the SDSU Dairy Science Department. Currently, we have 23 heifers donated and 12 are being milked. We will provide the Brown Swiss Cattle Breeders' Association with annual reports including research, such as a comparison of Brown Swiss and Holstein milk for cheese making.

Dr. Bhushan Jayarao joined the faculty August 10, 1995, to fill the Dairy Microbiology position vacated by Dr. Henning, now Alfred Chair of

Cheese Chemistry and Technology. Dr. Jayarao received his PhD from the Hungarian Academy of Science, Budapest, Hungary, and the last 4 years as Research Assistant Professor of Animal Science, University of Tennessee, Knoxville.

Dairy Science majors continue to find the job market open and profitable with starting salaries of nearly \$29,000. I continue to receive many more requests for graduates than we can fill, so if you are looking for a new challenge or location please call me to find out what is open/available.

 **Moovin'**  
*Your Way!*



**pace dairy  
foods  
company**

wishes the

SDSU Dairy Club

*"Good Luck"*

in all that you do

p.o. box 6818  
rochester, mn 55903

## THE SDSU DAIRY CLUB

Chad Anderson, Windom, MN . . . . .	Prod & Mfg	Mark Pederson, Jasper, MN . . . . .	Mfg
Kristin Anderson, Mt. Zion, IL . . . . .	Mfg	Margaret Pieper, New Prague, MN . . . . .	Mfg
Steve Banks, Fedora, SD . . . . .	Mfg	Ryan Pietz, Edgerton, MN . . . . .	Mfg
Heidi Beyers, Roscoe, SD . . . . .	Prod & An Sci	Angie Post, Volga, SD . . . . .	Prod
Tena Cuperus, Iona, MN . . . . .	Mfg	Richard Reeves, Brookings, SD . . . . .	Mfg
Bradley DeBoer, Corona, SD . . . . .	Mfg	Trevor Robbins, Gaylord, MN . . . . .	Mfg
Jon DeRouchey, Pukwana, SD . . . . .	Mfg	Brian Rook, Clear Lake, SD . . . . .	Prod
Paul Dykshorn, Ireton, IA . . . . .	Prod	Paul Ruger, Fenton, IA . . . . .	Mfg
Jason Engels, Brookings, SD . . . . .	Mfg	Marlin Sandbulte, Rock Valley, IA . . . . .	Prod
Dain Erickson, Appleton, MN . . . . .	Mfg	Jenny Scheffel, Lyle, MN . . . . .	Prod
Jennifer Fieber, Goodwin, SD . . . . .	Mfg	Gary Schiesser, Fergus Falls, MN . . . . .	Mfg
Christopher Gessford, Platte, SD . . . . .	Mfg	Jeff Schmit, Castlewood, SD . . . . .	Prod
Chad Gieseke, New Ulm, MN . . . . .	Prod	Thomas Schuch, Sisseton, SD . . . . .	Mfg
Paul Grace, Hartford, SD . . . . .	Prod	Ryan Schultz, Rochester, MN . . . . .	Prod
Leonard Grant, Austin, MN . . . . .	Prod	Karen Schwartz, Slayton, MN . . . . .	Prod
Christopher Groos, Brookings, SD . . . . .	Prod	Annette Seitz, Sleepy Eye, MN . . . . .	Mfg
Robert Gullickson, Aberdeen, SD . . . . .	Mfg	Heidi Selken, Humboldt, SD . . . . .	Prod
Tim Guza, Minneota, MN . . . . .	Mfg	Brian Sharp, Bath, SD . . . . .	Prod & Mfg & An Sci
Scott Halverson, Winfred, SD . . . . .	Mfg	Kristin Sharp, Bath, SD . . . . .	Mfg & An Sci
Jason Holland, Appleton, MN . . . . .	Mfg	Melissa Shumaker, Humboldt, SD . . . . .	An Sci
Akimoto Ichinomiya, Tokyo, Japan . . . . .	Gen Ag	John Sleggs, Cuba, NY . . . . .	Mfg
Lynn Iverson, Flandreau, SD . . . . .	Prod	Bradly Snaza, Milbank, SD . . . . .	Mfg
Keith Johnson, Beresford, SD . . . . .	Mfg	Christopher Sorenson, Estelline, SD . . . . .	Prod
Mark Johnson, Pipestone, MN . . . . .	Mfg	Laurene Soukup, Lanesboro, MN . . . . .	Prod
Kelly Jonsgaard, Lewiston, MN . . . . .	Ag Bus	Shawn Stoley, Harrisburg, SD . . . . .	Mfg
Angela Jorgenson, Trent, SD . . . . .	Prod & Pre-Vet	Troy Swanson, Ipswich, SD . . . . .	Mfg
Patrick Kalmes, Rollingstone, MN . . . . .	Prod	Christopher Swart, Renville, MN . . . . .	Mfg
Kari Kinder, Willow Lake, SD . . . . .	Mfg	Kelly Thissell, Centerville, SD . . . . .	Mfg
Vern Landeen, Brookings, SD . . . . .	Mfg	Eric Thompson, Bruce, SD . . . . .	Mfg
Jamie Langerock, Clear Lake, SD . . . . .	Prod	Lance Thury, Parkston, SD . . . . .	Mfg
Chadwick Larsen, Huron, SD . . . . .	Mfg	Jamison Vandeneinde, Grand Rapids, MN . . . . .	Mfg
Lucas Lentsch, Veblen, SD . . . . .	Mfg	Brian Wiertzema, Ellsworth, MN . . . . .	Mfg
Ryan Lepp, Butterfield, MN . . . . .	Prod	Jennifer Wenzel, Luverne, MN . . . . .	Mfg
Cari Leuthold, Ellsworth, MN . . . . .	Prod & An Sci	Michael Wolkow, DeSmet, SD . . . . .	Mfg
Jeffrey Leuthold, Ellsworth, MN . . . . .	Prod & Gen Ag	Troy Zoellner, Groton, SD . . . . .	Prod
Steven Lieser, Paynesville, MN . . . . .	Mfg		
John Locke, Sioux City, IA . . . . .	Prod		
George Loucks, Hawarden, IA . . . . .	Mfg & Prod		
Dana Metzger, Rock Rapids, IA . . . . .	Prod		
Rick Metzger, Rock Rapids, IA . . . . .	Gen Ag		
Chad Moeller, Fairmont, MN . . . . .	Prod		
Brian Nielsen, Sisseton, SD . . . . .	Prod		
Michael Noble, Ipswich, SD . . . . .	Mfg		
Chris Oehler, Cleveland, MN . . . . .	Prod & Ag Ed		
Patrick O'Reilly, Canby, MN . . . . .	Mfg		
Scott Overgaard, Luverne, MN . . . . .	Prod		
Nancy Overman, Slayton, MN . . . . .	Prod		
Andrew Paulson, Andover, SD . . . . .	Prod		
Perry Pearson, Salem, SD . . . . .	Prod		



### Vir Kar J Swiss Farm

Virgil & Karen Ackerman & Family

18815 530 Avenue  
Atwater, MN 56209

612-857-2706

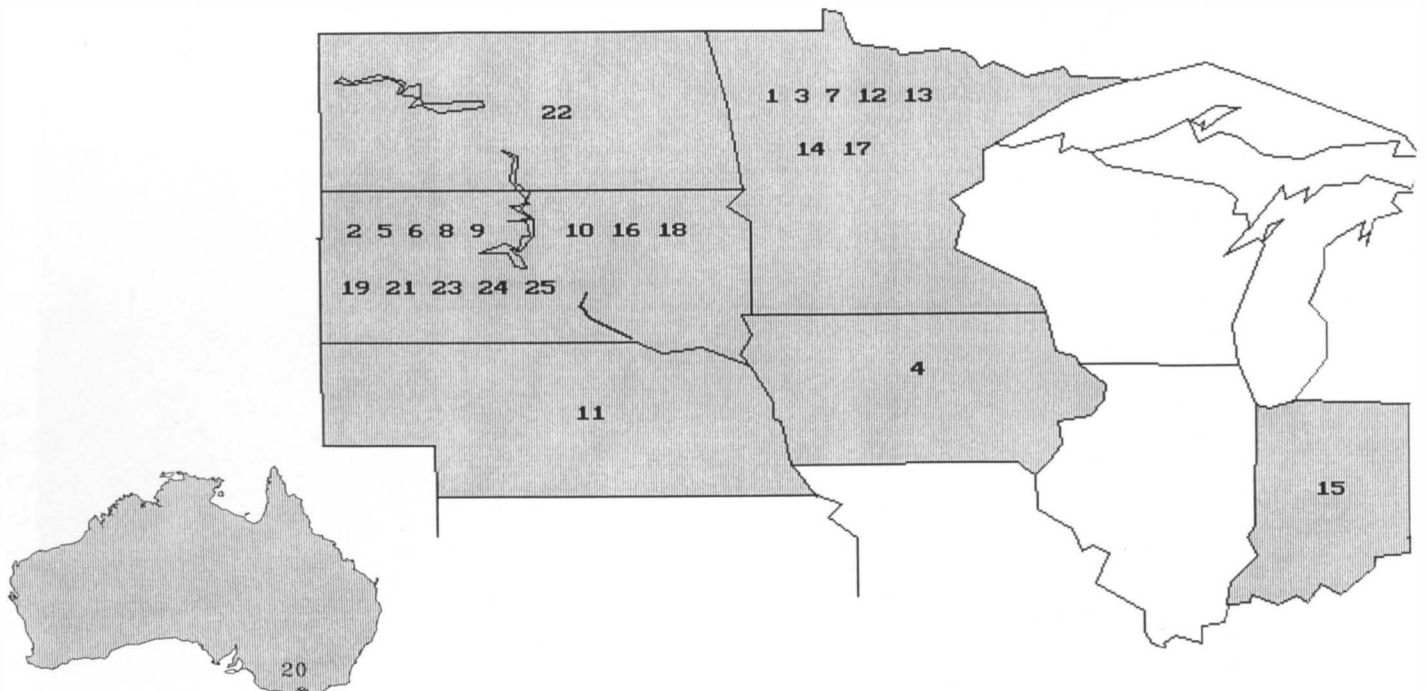




2000

## 1995 INTERNSHIPS AND SUMMER WORK EXPERIENCES

- |     |                    |  |
|-----|--------------------|--|
| 1.  | Chad Anderson      | Kraft Inc., New Ulm, MN  |
| 2.  | Kristin Anderson   | Custer State Park, Custer, SD                                      |
| 3.  | Tena Cuperus       | Marigold Foods, Rochester, MN                                      |
| 4.  | Paul Dykshorn      | Landmark Genetics, Sioux Center, IA                                |
| 5.  | Bob Gullickson     | Davisco International, Lake Norden, SD                             |
| 6.  | Scott Halverson    | SDSU Dairy Plant, Brookings, SD                                    |
| 7.  | Akimoto Ichinomiya | Davisco International, Le Sueur, MN                                |
| 8.  | Lynn Iverson       | SD Dairy Princess, Brookings, SD                                   |
| 9.  | Keith Johnson      | SDSU Dairy Plant, Brookings, SD                                    |
| 10. | Vern Landeen       | Land O'Lakes, Volga, SD  |
| 11. | Chad Larsen        | Roberts Dairy, Omaha, NE   |
| 12. | Steve Leiser       | AMPI, Paynesville, MN  |
| 13. | Teresa Mages       | Kraft Inc., New Ulm, MN  |
| 14. | Chris Oehler       | Cenex/Land O'Lakes, Se Center, MN                                  |
| 15. | Patrick O'Reilly   | Crossroads Farm/Kroger Dairy, Indianapolis, IN                     |
| 16. | Angie Post         | SDSU Dairy Sales Bar, Brookings, SD                                |
| 17. | Rich Reeves        | Pace Dairy, Rochester, MN  |
| 18. | Trevor Robbins     | Davisco International, Lake Norden, SD                             |
| 19. | Gary Schiesser     | Land O'Lakes, Volga, SD  |
| 20. | John Sleggs        | Gilbert Chandler Institute of Dairy, Werribee, Victoria, Australia |
| 21. | Brad Snaza         | Valley Queen Cheese, Milbank, SD                                   |
| 22. | Shawn Stoley       | Bridgeman Dairy, Bismarck, ND                                      |
| 23. | Kelly Thissell     | SDSU Dairy Sales Bar, Brookings, SD                                |
| 24. | Eric Thompson      | Land O'Lakes, Volga, SD  |
| 25. | Mike Wolkow        | SDSU Dairy Plant, Brookings, SD                                    |



# DAIRY SCIENCE SCHOLARSHIPS AND AWARDS 1995-96

- JOHN ANDERSON MEMORIAL: \$300  
**Christopher Gessford**
- ASSOCIATED MILK PRODUCERS, INC.: \$300  
**John Locke**
- ROSS BAKER SCHOLARSHIP: \$350  
**Dana Metzger**
- EMERY BARTLE MEMORIAL: \$2000  
**Jeffrey Leuthold**
- BLACK HILLS MILK PRODUCERS ASSOCIATION: \$400  
**Brian Nielsen**
- BROWN SWISS/GILLETTE DAIRY SCHOLARSHIP: \$500  
**Jon DeRouche**
- CROSSROADS FARMS/KROGER DAIRY SCHOLARSHIP: \$1000  
**Michael Noble**
- COLORADO DAIRY TECHNOLOGY: \$500  
**John Sleggs**
- DAIRY CLUB SCHOLARSHIP: \$250  
**1. Kelly Jonsgaard**  
**2. Karen Schwartz**
- GERMANTOWN (USA) COMPANY: \$1000  
**Keith Johnson**
- GILBERT T. & OLGA GILBERTSON MEMORIAL: \$250  
**Angie Post**
- CLYDE HELSPER MEMORIAL: \$400  
**Heidi Beyers**
- LAKE NORDEN CREAMERY SCHOLARSHIP: \$750  
**Troy Swanson**
- LAKESIDE DAIRY SCHOLARSHIP: \$400  
**Thomas Schuch**
- LAND O' LAKES - DISTRICT 17 SCHOLARSHIP: \$400  
**Eric Groos**
- MARIGOLD FOODS SCHOLARSHIP: \$1000  
**Ryan Pietz**
- MARSHALL PRODUCTS/RHONE-POULENC SCHOLARSHIP: \$500  
**Mark Johnson**
- JAMES MARVEL MEMORIAL: \$500  
**Christopher Groos**
- KIRK MEARS MEMORIAL: \$450  
**Angie Post**
- RALPH ROGERS MEMORIAL: \$400  
**Jamison Vandeneinde**
- NORTH CENTRAL CHEESE INDUSTRIES ASSOCIATION  
**1. Tom Schuch - \$1500**  
**2. Patrick Kalmes - \$1500**  
**3. Jon DeRouche - \$1000**
- H.C. OLSON SCHOLARSHIP: \$600  
**Tena Cuperus**
- T.M. OLSON SCHOLARSHIP: \$400  
**Paul Dykshorn**
- ALFRED HERMANN RISHOI SCHOLARSHIP: \$750  
**1. Christopher Sorenson**  
**2. Mark Pederson**
- KENNETH SEAS MEMORIAL: \$1000  
**Heidi Beyers**
- SHIRLEY SEAS MEMORIAL: \$500  
**Lance Thury**
- SINTON FOODS COMPANY SCHOLARSHIP: \$500  
**Steven Lieser**
- SD STATE DAIRY ASSOCIATION: \$750  
**1. Christopher Groos**  
**2. Jennifer Fieber**
- VALLEY QUEEN CHEESE FACTORY SCHOLARSHIP: \$2000  
**Christopher Swart**
- JOSEPH VAN TREECK SCHOLARSHIP: \$500  
**Keith Johnson**
- WELLS BLUE BUNNY SCHOLARSHIP: \$1000  
**Paul Ruger**
- AWARDS
- D.F. BREAZEALE MEMORIAL: \$300  
**Brian Sharp**
- DAIRY JUDGING - MANUFACTURING: \$150  
**Patrick O'Reilly**
- DAIRY JUDGING - PRODUCTION: \$150  
**Brian Sharp**
- FORBES LEADERSHIP AWARD  
**Kristin Anderson**
- GRABER-FORD AWARD  
**Chad Moeller**
- HOWARD VOELKER: \$100  
**1. Kristin Anderson**  
**2. Jeffrey Leuthold**  
**3. Brian Sharp**
- TOBKIN BROS.: \$100  
**1. Chadwick Larsen**  
**2. Patrick O'Reilly**  
**3. Eric Thompson**
- FRESHMAN SCHOLARSHIPS
- SD DAIRY PROMOTION ASSOCIATION: \$300  
**1. Jeremy Buschkamp**  
**2. Clifford Helkenn**
- SD DAIRY PROMOTION ASSOCIATION - 4-H: \$300  
**1. Curtis Alexander**  
**2. Jared Janke**
- SD DAIRY FIELDMEN'S: \$500  
**1. Beth Larson**
- CLYDE HELSPER DAIRY FIELDMEN'S ASSOCIATION: \$500  
**1. Michael Plucker**

# 1995 - 1996 Dairy Science Graduates



**CHAD  
ANDERSON**

**Hometown:** Windom, MN  
**Degree:** Dairy Prod. & Dairy Manuf.  
**Future Plans:** To work within the dairy field.

**Most Memorable Moment:** The 1996 ADSA-SAD Midwest Regional Conference.

**Best thing about SDSU:** How well everybody gets along with each other throughout the school.

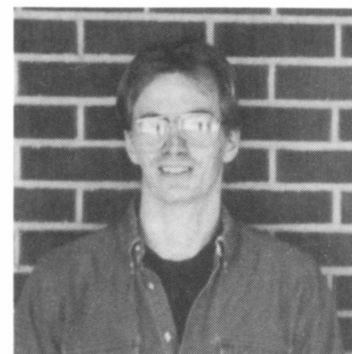


**KRISTIN  
ANDERSON**

**Hometown:** Mt. Zion, IL  
**Degree:** Dairy Manufacturing  
**Future Plans:** To work in and further my knowledge of the dairy industry.

**Most Memorable Moment:** When I received my first Dairy Science scholarship and my parents traveled from IL to attend the banquet.

**Best thing about SDSU:** SDSU has a very welcoming personality.

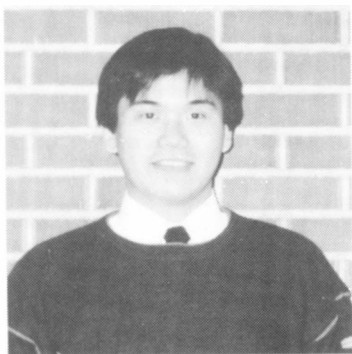


**ROBERT  
GULLICKSON**

**Hometown:** Aberdeen, SD  
**Degree:** Dairy Manufacturing  
**Future Plans:** Catch the state record walleye and work in the dairy industry.

**Most Memorable Moment:** My failed attempt at taking Dr. Henning's life during a fishing trip.

**Best thing about SDSU:** It is the only university that has a class on fishing.



**AKIMOTO  
ICHINOMIYA**

**Hometown:** Tokyo, Japan  
**Degree:** General Ag. (Dairy emphasis)  
**Future Plans:** Helping to provide food for people.

**Most Memorable Moment:** ADSA-SAD trip to the University of Illinois and the tours in Chicago.

**Best thing about SDSU:** School environment.



**LYNN  
IVERSON**

**Hometown:** Flandreau, SD  
**Degree:** Dairy Production  
**Future Plans:** To be involved in the promotion of dairy products, foods and drugs nation-wide.

**Most Memorable Moment:** Going to Canada with Paul, Doug, Andy, Erv, Patty & Kristin.

**Best thing about SDSU:** All the friends I made for life.



**VERN  
LANDEEN**

**Hometown:** Sioux Falls/Beresford, SD  
**Degree:** Dairy Manufacturing  
**Future Plans:** Management in Land O'Lakes.

**Most Memorable Moment:** The day that I will finally have my diploma in hand.

**Best thing about SDSU:** All the Dairy Science faculty were wonderful. Dr. Baer was very supportive.

## 1995 - 1996 Dairy Science Graduates



**CHAD  
LARSEN**

**Hometown:** Wolsley, SD

**Degree:** Maj-Dairy Manufacturing,  
Min-Ag. Business

**Future Plans:** Get a job where it is  
warm all year.

**Most Memorable Moment:** My entire  
college experience.

**Best thing about SDSU:** The whole  
campus atmosphere.



**LUCAS  
LENTSCH**

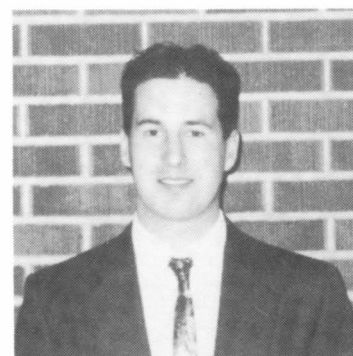
**Hometown:** Veblen, SD

**Degree:** Dairy Manufacturing

**Future Plans:** Pursue a career in the  
dairy industry.

**Most Memorable Moment:** The  
recording of my album in Nashville,  
TN.

**Best thing about SDSU:** The amount  
of opportunities that are available for  
students.



**CHAD  
MOELLER**

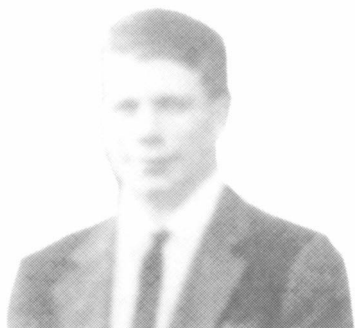
**Hometown:** Fairmont, MN

**Degree:** Production

**Future Plans:**

**Most Memorable Moment:**

**Best thing about SDSU:**



**CHRIS  
OEHLER**

**Hometown:** Cleveland, MN

**Degree:** Dairy Prod. & Ag. Ed.

**Future Plans:** Pursuing a career in  
dairy science as a livestock consultant  
or herdsman.

**Most Memorable Moment:** To  
disclose this information would be  
incriminating myself.

**Best thing about SDSU:** The  
individual attention received.



**PAT  
O'REILLY**

**Hometown:** Canby, MN

**Degree:** Dairy Manufacturing

**Future Plans:** A management  
position in a dairy plant.

**Most Memorable Moment:** Cutting  
all the cheese for the cheese boxes.

**Best thing about SDSU:** All the  
down home and friendly people.



**ANDY  
PAULSON**

**Hometown:** Andover, SD

**Degree:** General Ag.

**Future Plans:**

**Most Memorable Moment:**

**Best thing about SDSU:**



# 1995 - 1996 Dairy Science Graduates



**BRIAN  
SHARP**

**Hometown:** Bath, SD  
**Degree:** Majors: Dairy Manuf, Dairy Prod, & Animal Sci. Minor: Chemistry  
**Future Plans:** Get married this summer and return home to family farm.  
**Most Memorable Moment:** Getting engaged before finals week.  
**Best thing about SDSU:** The friends I made and the education I received.



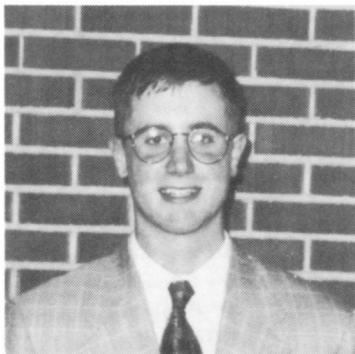
**BRADLEY  
SNAZA**

**Hometown:** Milbank, SD  
**Degree:** Dairy Manufacturing  
**Future Plans:** Start as a production supervisor and work up the ladder.  
**Most Memorable Moment:** Pulling "all-nighters" in the Newman Center trying to cram for Chem tests.  
**Best thing about SDSU:** Small classes in Dairy Science allow you to get to know other students.



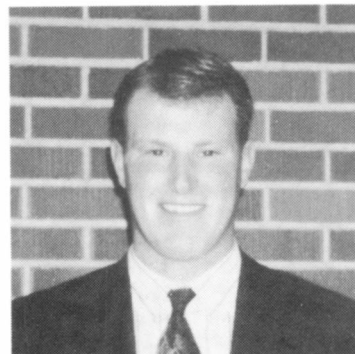
**SHAWN  
STOLEY**

**Hometown:** Harrisburg, SD  
**Degree:** Dairy Manufacturing  
**Future Plans:** Employment in the dairy industry, preferably in Quality Assurance.  
**Most Memorable Moment:** ADSA-SAD trips with the Dairy Club.  
**Best thing about SDSU:** The friendly people and the many friends I met at SDSU.



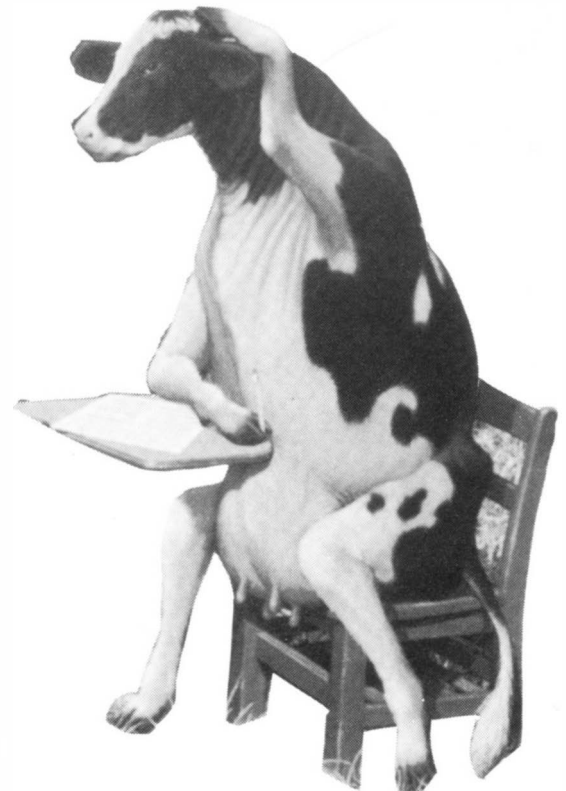
**ERIC  
THOMPSON**

**Hometown:** Volga, SD  
**Degree:** Dairy Manufacturing  
**Future Plans:** Live life to it's fullest.  
**Most Memorable Moment:** Placing 3rd as a team and 3rd individually in yogurt and ice cream at the National Dairy Products Judging contest.  
**Best thing about SDSU:** The closeness of the college.



**MICHAEL  
WOLKOW**

**Hometown:** DeSmet, SD  
**Degree:** Dairy Manufacturing  
**Future Plans:** To work in the dairy industry and have a prosperous career.  
**Most Memorable Moment:** Kirk Baldwin's reaction when I created a sauna in the cheese room in the dairy plant.  
**Best thing about SDSU:** The friends I made.



# LEADERSHIP

what today's employers are looking for



**1995-1996 Dairy Cattle Judging Team**



**1995-1996 Dairy Products Judging Team**

## GET IT NOW

**in SDSU's  
College of Agriculture and Biological  
Sciences**

**Offering nationally renown programs in Dairy Production,  
Dairy Manufacturing and more than 20 other areas.**

**\* 95%+ Career Placement, Class of 1995\***

**Contact Dr. Gene Arnold or Mr. Tim Nichols  
605-688-5133**

FROM YOUR FRIENDS AT

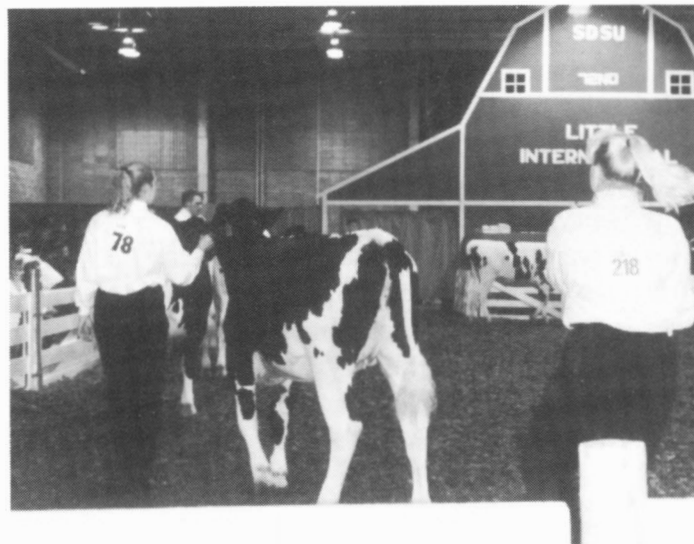


**GOOD LUCK!!**

**Little I**  
**Karen Schwartz**

One of our own Dairy Club members, Brian Sharp, kept very busy as manager for the 72nd Little International Agricultural Exposition. To help Brian with his managing job was dairy cattle superintendent, Lynn Iverson and assistants, Paul Dyshorn and Will Wiebe. Other Dairy Club members who were on the Little I staff were dairy foods judging coordinator, Kristin Anderson, and assistant, Dana Metzger.

Thirty participants prepared for two weeks of clipping, washing, and using every muscle in their body to try to get their heifer to move. Some were even led by their heifers. It was a challenge and a time of joy for all. Some participants sang songs as they rode in the trailer with their heifer from the SDSU dairy unit to the Animal Science Arena. Once the trailer arrived at the arena, it came down to serious show business. Tina Vilter, from Fridley, MN, judged everyone's ability to show and fit the cattle. In the end, Paul Dykshorn received first in the dairy fitting contest. Finally, in the showmanship contest, Dana Metzger received top honors.



Little I arena during dairy cattle competition

The last award, which was determined by a vote of all participants, was given to the hardest worker, a very deserving Corine Austin.

We are fortunate at SDSU to have such an enjoyable and successful event.



# It pays to belong.

Revolving \$8.3 million in cash last year is why members of AMPI's North Central Region know it pays to belong.

AMPI is the marketing arm of successful Midwest dairy farms, providing services dairy farmers need to compete in the 1990s and beyond.

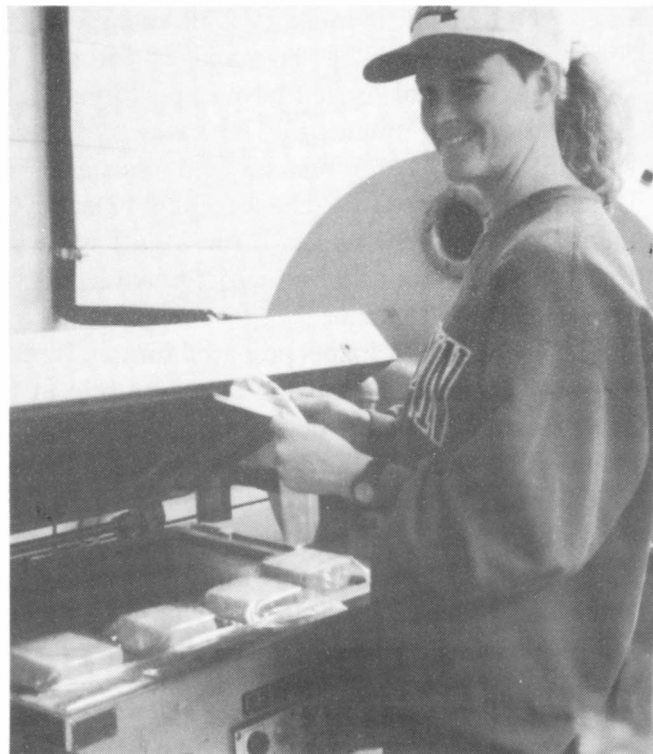
---

**For more information call South Dakota's AMPI office at (605) 925-4234**

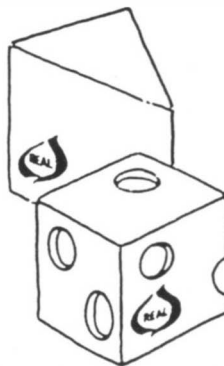
## Twas the Semester before Cheeseboxes

Angie Post

The stockings were hung by the chimney with care,  
With dreams of cheeseboxes under trees everywhere,  
The order forms were mailed and came in without delay,  
Much cheese to be cut - let's set up a work day.  
A lot of cheese was packaged but the best part was the fun,  
The Dairy Club even got pizza before they were done.  
Boxes were folded and stuffed with grass,  
All ready for the cheese, out the door they dash.  
Cheeseboxes here, cheeseboxes there,  
Cheeseboxes sent out everywhere.  
Cash and carry or ship out today,  
Many to move, much to the UPS man's dismay.  
Christmas is almost here, everyone in a panic,  
Running around, boy are they frantic.  
With the work completed and students on break,  
The profits show a good year's take.  
To all who received our cheese,  
We hope everyone was very pleased.  
Thank you to all to whom boxes were sold,  
And hope your cheese was free of mold!



**The Cheese Box honor roll:** Tom Schuch, Lori Schuch, Brian Sharp, Gretchen Anderson, Kirk Baldwin, Chad Larsen, Aki Ichinomiya, Tomoko, Laurene Soukup, Dana Metzger, Jeff Leuthold, Rich Reeves, Cari Leuthold, Kristin Anderson, Angie Post, Ryan Pietz, Pat O'Reilly, Patrick Kalmes, Kelly Jonsgaard, Heidi Selken, Jenny Fieber, Melissa Shumaker, Troy Zoellner, Steve Banks, Karen Schwartz, Brian Wiertzema, Dave Henning.



*Profit from Performance  
Not Prediction*

**POST LANE  
HOLSTEINS**

Marv & Joy  
(605) 826-4227

Doug  
(605) 627-5185

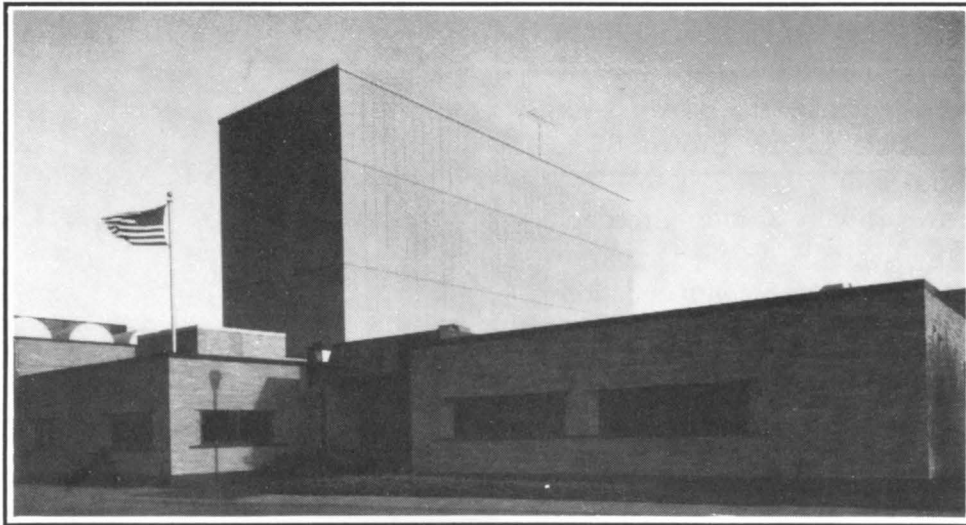


# *New-Fangled Technology and Old-Fashioned Trust*

Butterfat and protein tests are run from milk samples collected with each farm pickup. Somatic cell, water, bacterial and antibiotic lab tests are also routinely run. Milk producers comment on the accuracy of the testing and like the fact that results are promptly shared with them. Our milk suppliers always know where they stand. Valley Queen is as committed to producing quality

cheese as our dairy producers are to producing the highest quality milk.

And, Valley Queen milk trucks run on schedule... like a fine Swiss watch... never too early and never too late. Our careful scheduling complements the schedules of our milk producers. We know their day is as full as ours. At Valley Queen we call it mutual respect.



**Valley  
Queen**



**CHEESE  
FACTORY  
INC.**

MILBANK, SOUTH DAKOTA

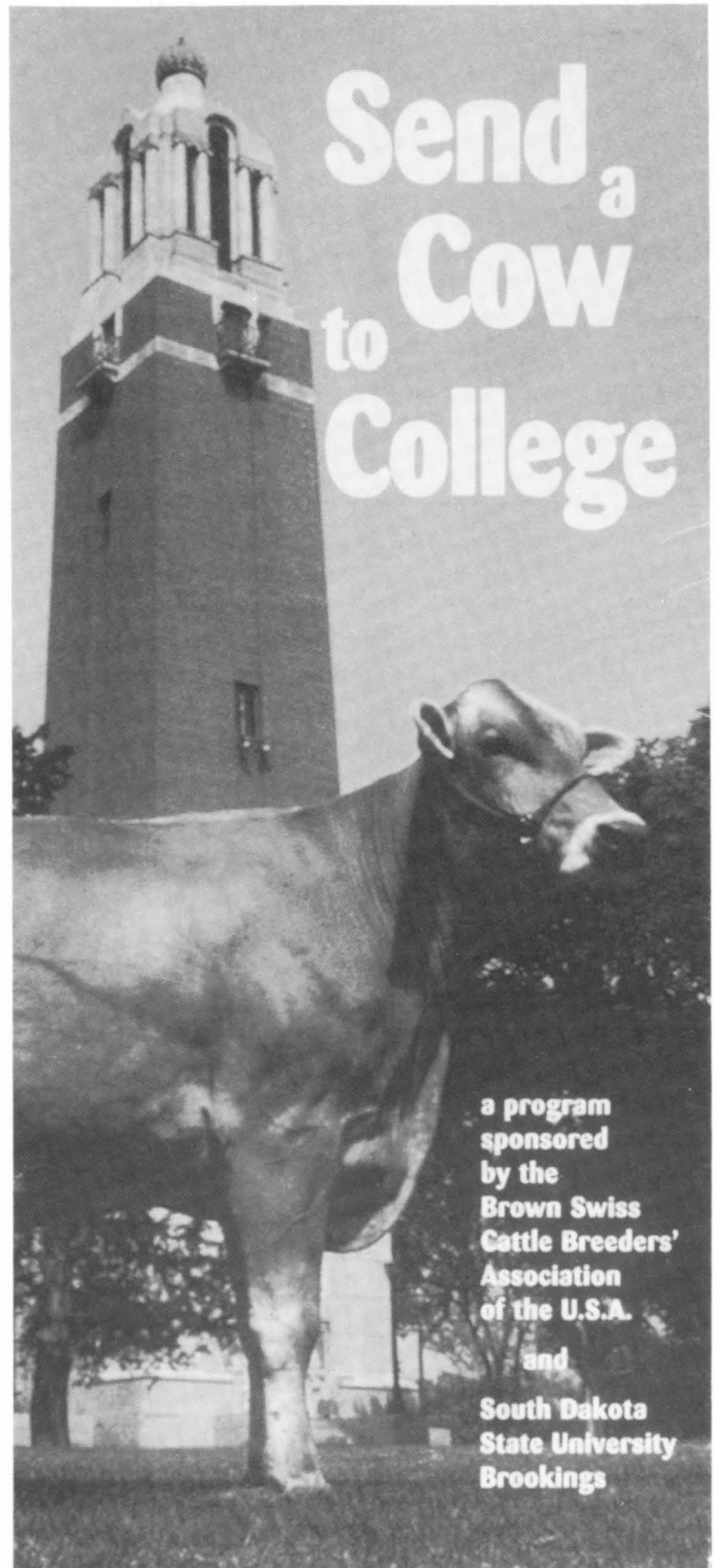
## Send a Cow to College Dr. Mike Brouk

In 1896, the first 25 cows arrived to join SDSU's Dairy Science department. Upon the completion of the Dairy Research & Training Facility, complete with a state-of-the-art double eight parallel milking parlor and a drive-thru center feed freestall housing area, it was time for a new group of cows to come to college. These cows did not cover themselves in the typical "Minnesota camouflage" pattern of the resident Holsteins. The newcomers are Brown Swiss.

I have been working closely with the Brown Swiss Cattle Breeders' Association of the U.S.A. in arranging for donations of bred heifers to the SDSU herd. The Donation Agreement has the following points:

- \* The Association will provide SDSU with 60 bred heifers, 18-21 months of age.
- \* Vaccination and health certificates will be provided with each animal.
- \* SDSU agrees to manage the Brown Swiss herd and participate in the Brown Swiss classification program.
- \* The Brown Swiss Cattle Breeders' Association of the U.S.A. will provide mating and sire selection recommendations annually.
- \* When an original donated animal is culled, SDSU will use the proceeds to establish a Brown Swiss Scholarship Fund (for incoming students from Brown Swiss farms).
- \* SDSU agrees to maintain the Brown Swiss herd at least 25 years and to provide annual reports to the Brown Swiss Cattle Breeders' Association of the U.S.A.

The heifers that are donated should be from an above breed average dam for protein, sired by a plus proven sire, and bred to a plus proven sire, or a young sire with an above average pedigree value. The dam should be at least Good Plus in the mammary. Donors can obtain the donated heifer value for tax purposes with the assistance of the Brown Swiss Enterprises.



## Some of Our Favorites

"Frida"  
4y 305 15,910 4.9 785 4.1 647

"Tulip"  
4y 305 16,180 4.6 748 3.4 553

"Jelo"  
5y 305 15,990 5.0 804 4.0 635

"Pudd"  
3y 305 17,650 4.6 879 3.7 655

"Star"  
3y 305 16,780 4.1 682 3.6 610

"Verna"  
3y 301 17,230 4.2 732 3.5 609

"Tuts"  
1st Intermediate Heifer & Junior  
Champ. at 1994 S.D. State Fair

"Halo"  
1st Junior Heifer & Reserve Jr.  
Champ. at 1994 S.D. State Fair

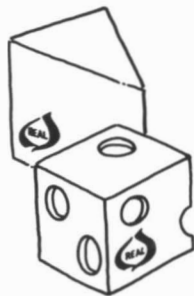
**Multi-Rose Jerseys, Inc.**

**1636 Fir Avenue**

**Rock Rapids, IA 51246**

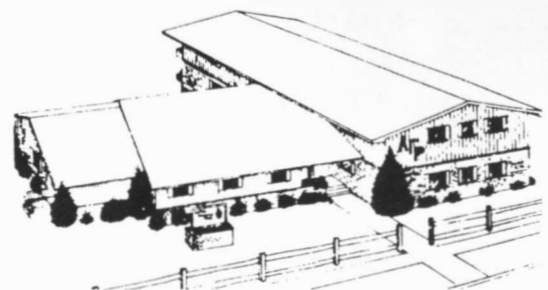
Marvin (712)472-3073 Dale (712)472-2089 William (712)472-3013

**Congratulations  
and Best Wishes,  
Graduating  
Seniors**



**The Joe Schuch Family  
Sisseton, South Dakota**

**Alpha Gamma Rho  
Fraternity**



**AGR and AGRICULTURE together  
"A Good Thing Growing"**

AGR is a Social-Professional Ag Fraternity  
Building Better Men Through  
*Scholarship • Leadership • Fellowship*

*Feel Free to Stop in at  
1929 Eighth Street  
Brookings, SD  
or call (605) 692-9417*

## Dairy Club Picnics Angela Jorgenson

Pack your picnic basket because we're going on a picnic! Once again, SDSU's Dairy Club held it's annual Spring and Fall picnics last April and September as a "year end" farewell and a "new year" welcome to both old and new members. At the Spring picnic everyone cooled down with our own SDSU ice cream. Both picnics were held in Pioneer Park in Brookings, and included great food from the SDSU Meat Lab, a short meeting, and a little entertainment with a volleyball and a football. A great time was had by all!



♥Always a kid at heart♥



Ice cream, anyone?



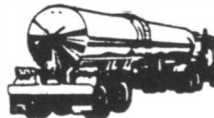
# HILLS STAINLESS STEEL

\*\*\*\*\*



Complete Repair, Parts and Service for:

- ALL Bulk Pickup Tanks and Transports
- Tag and Pusher Axle Installation
- Stainless Steel Fabricating



FPU Tanks and Transports

### Serving the Dairy Industry Since 1968.

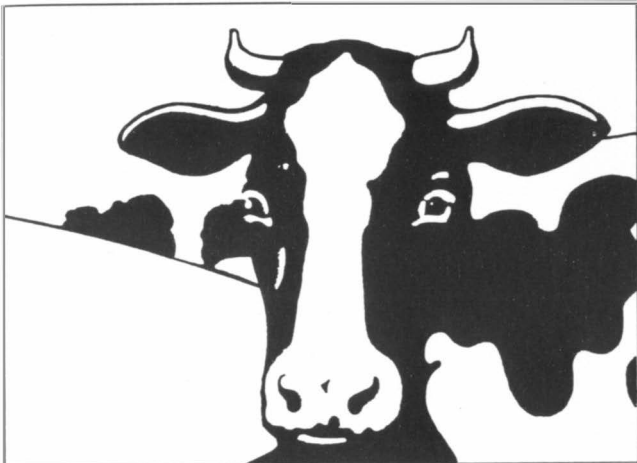
*Wilmer Elbers*  
Owner & Sales

*Tom Bush*  
Service & Sales Rep.

*Darwin Elbers*  
Sales Rep.

**HILLS STAINLESS STEEL AND EQUIPMENT CO., INC.**

505 W. Keohn P.O. Box 287 Luverne, MN 56156  
(507)283-4405 / (800)247-9551 / FAX (507)283-4407



# Marigold Foods, Inc.

406 N. Broadway • PO Box 309  
Rochester, MN 55903-0309 • (507) 2897-7353

KEMP'S "It's the cows."

## Da-Co-Ton Holsteins

*Robert & Lyla Hogg*



RR 2 • Box 7  
Parker, SD 57053  
(605) 297-4923

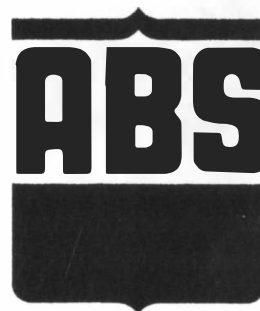
*Breeding Stock Available*



**FRANK SABATKA**  
PRESIDENT

9910 N. 48th Street  
Omaha, NE 68152  
Phone 402/453-1322

Toll Free 1-800-456-6122  
FAX 402/453-1615



**ABS, GLOBAL, INC.**

De Forest, WI 53532 (608) 846-3721

*A Career Opportunity*

**Merlyn Sandbulte**  
District Sales Manager  
2113 17th Street  
Rock Valley, IA 51247  
(712) 476-5555



733 N. Munsterman / Appleton, MN 56208

Mike Lind 612-289-1301



**Dairy Club Hits the Ice!!**  
Jennifer Fieber

On December 6th the SDSU Dairy Club, along with the advisors, hit the ice (some of us literally). We participated in what some of us called "Club Bonding". Approximately ten members and advisors went ice-skating following the month's meeting. For some it was a challenging and first time experience, but for others, (yes, Dr. Parsons, we mean you) it was a chance to show off your ice-skating skills. Regardless of the situation, everyone had a night to remember. It was very interesting!



**We All  
Had A**  
  
**Good  
Time!**



# *Leigh River Farm*

**REGISTERED BROWN SWISS CATTLE**

*\* Stressing High Production  
with Fundamental Type*

*120 cows in the milking herd*

**Larry, Ada, and Angela Jorgenson**  
Route 1, Box 2 • Trent, South Dakota 57065

**(605) 428-5103**

*Stop by and have a cup of coffee or a glass of milk*



## The Sanitation Industry Leader

### Innovative Products and Programs

- ✓ **Paradigm™**  
Revolutionary CIP technology — no sodium hydroxide, chlorine, or phosphates.
- ✓ **Oxonia Active®**  
Patented peroxyacetic acid sanitizer.
- ✓ **TFC — Thin Film Cleaning**  
Takes the place of traditional foam cleaning — faster, goes further, stays on longer.
- ✓ **Klean Check™**  
Utilizing the Uni-Lite® for immediate in-plant surface sanitation verification.

### Innovative Systems

- ✓ **Quantum®**  
The only advanced chemical formulation, allocation and control system.
- ✓ **Custom-designed CIP systems/in-house engineering support.**

*Quality Commitment* . . . the peace of mind promise from Klenzade.



Ecolab/  
Henkel  
Global  
Technology  
Partnership

# *Hiland Dairy Foods*



**Fresh from  
Qualityville.**

## **IVERSON AG ENTERPRISES, INC.**



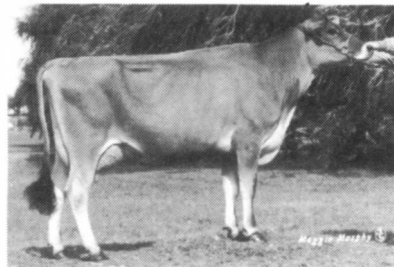
***Leasing & Share  
Program***

**Flandreau, SD**

**Robert Iverson, Pres.  
605-997-2364**

## **South Dakota Jersey Association**

*the efficient breed*



**Sioux Empire Farm Show  
Time Out for Protein Edition #4  
Average 19 head --- \$1236**

**Sales Manager.....Gerald Feikema  
(605) 693-3434**

**President.....Andy Paulson  
(605) 397-8594**

**Secretary/Treasurer .....Ann Vostad  
(605) 826-4237**

**Casino Night for Land O'Lakes**  
**Angie Post**

As a fund raiser for the regional meeting of the American Dairy Science Association/Student Affiliate Division, the Dairy Club was invited to be the Black Jack dealers for the Land O'Lakes holiday party on January 13th. Tom Schuch, Laurene Soukup, Kristin Anderson, Angie Post, and Advisor Kirk Baldwin all chipped in to make an enjoyable evening. Dealing for Black Jack was a new experience for most of the Dairy Club members, but we caught on fast with the help of Land O'Lakes. At the end of the night, after we took most of their money, they realized that college students do catch on quickly. Everyone had a great time dealing. The Land O'Lakes, Volga employees had fun playing for prizes.



**Try this exciting line-up of products!**



- ➔ 100% of the Daily Value of the Antioxidant, Vitamin E.
- ➔ Acidophilus Culture, a natural culture that helps you efficiently digest the foods you eat and the milk and juice you drink.
- ➔ Bifidus Culture, a natural culture that helps keep your system operating the way nature intended.



**FOOD STORES**

**Low Prices**

*All Day . . . Every Day*

Telephone: 692-7317

**Brookings Mall**

**FarmHouse Fraternity**

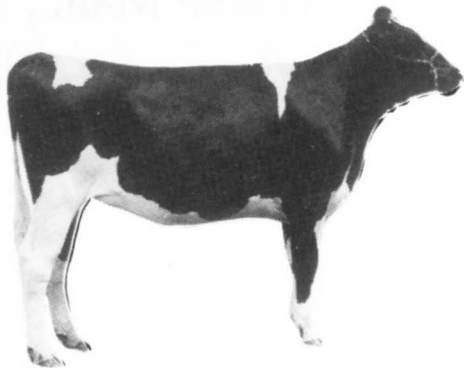
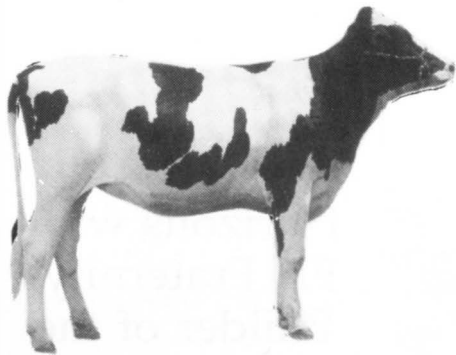
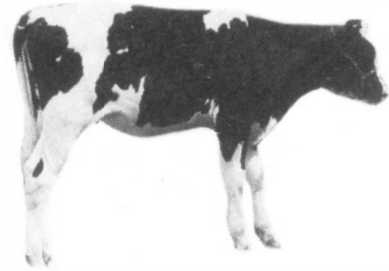
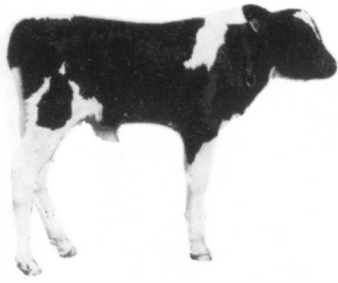


Broaden Your Horizons with FH Fraternity, Builder of the Whole Man.



729 Twentieth Avenue  
 Brookings, South Dakota 57006  
 (605) 692-5933

**Visitors Welcome Anytime!**



# Body Condition Scoring Guide

---

*for  
Dairy Replacement  
Heifers*

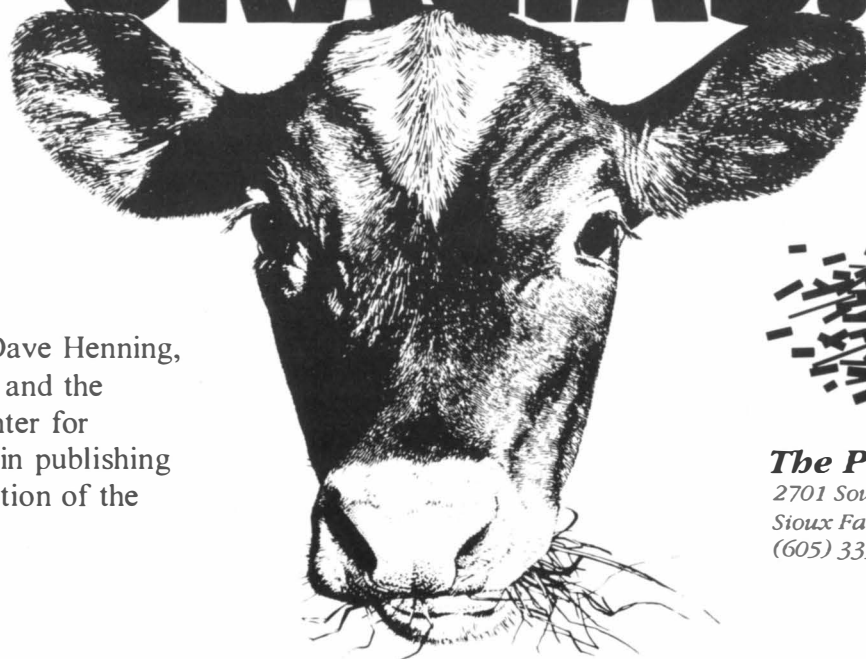


# BOVATEC<sup>®</sup>

\* For growth enhancement  
and cocci control.



# MOOCHAS GRACIAS.



Thank you Dr. Dave Henning,  
The Advertisers, and the  
The Printing Center for  
all your support in publishing  
the fourteenth edition of the  
Dairy Digest.



**The Printing Center, Inc.**  
2701 South Minnesota Avenue, Suite 8  
Sioux Falls, South Dakota 57105-4746  
(605) 335-7252 • FAX (605) 335-1204

## OPPORTUNITY AWAITS!

Sire Power has spent decades providing dairy and beef producers top-notch genetics. We know that a quality product must be complemented with professional service our customers can count on. With Stud 9, you receive a package of impressive genetics, proven programs and reliable service!

Sire Power offers potential employees quite an opportunity--representing an industry-leading line-up of genetics that are sought world-wide. We complement the genetics with solid programs and service.

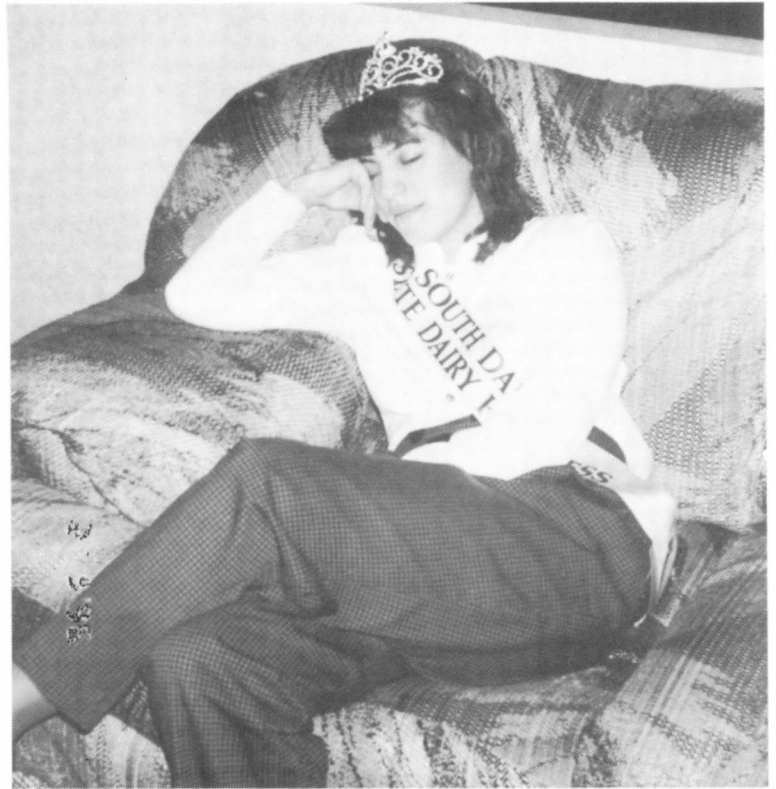


*Helping You Move Forward* 

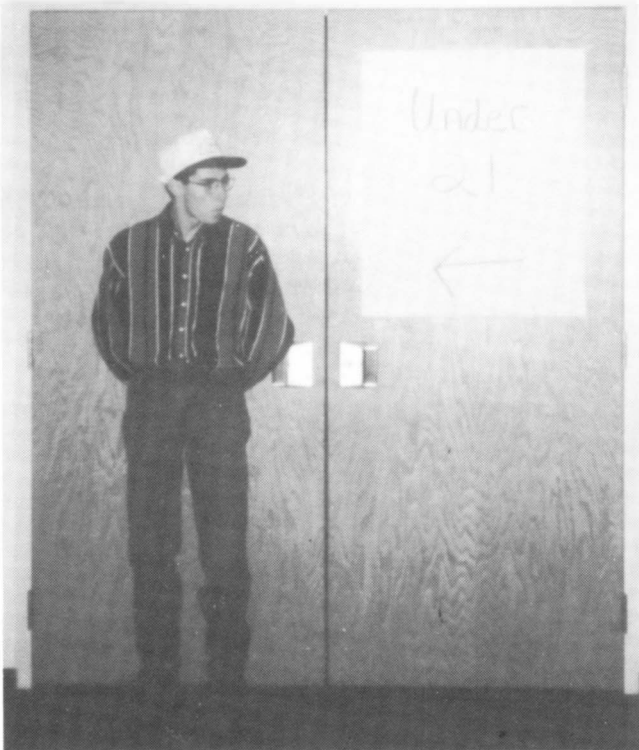
RR 2, Box 20, Tunkhannock, PA 18657 717-836-3168 FAX 717-836-1490



Officers putting their heads together



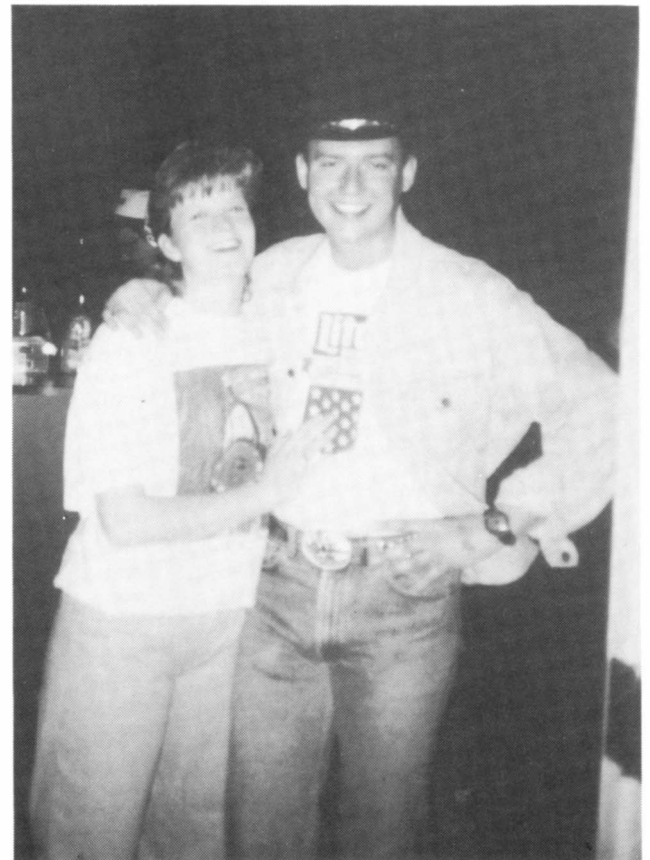
South Dakota Dairy Princess hard at work



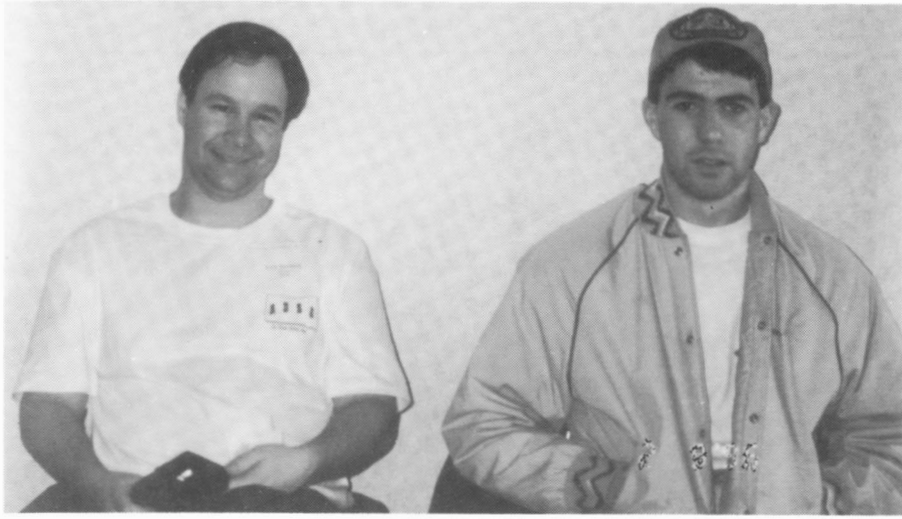
" Darn I can't go in!"



" Our ice cream untouched by human hands!"



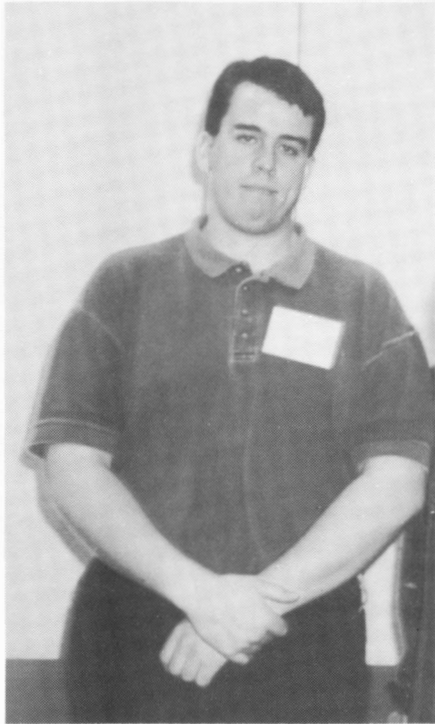
"Lucas your my biggest fan!"



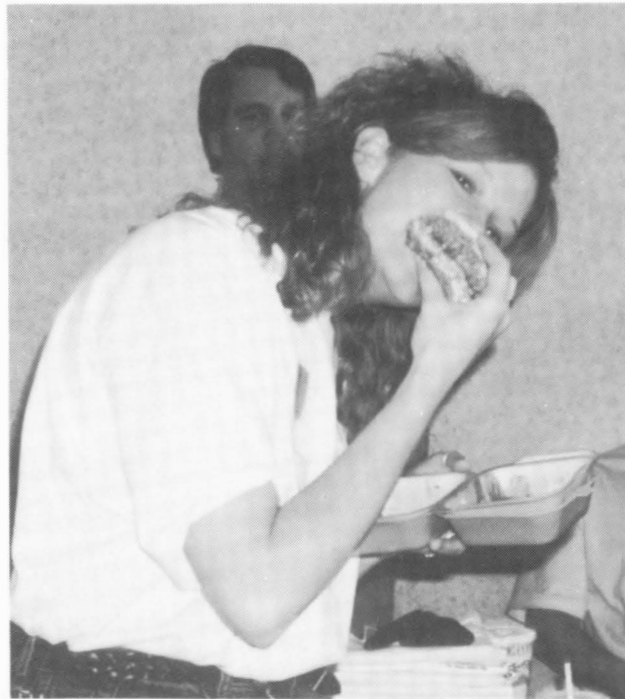
Smile a little more like Kirk, Brian.



"I'm on break, leave me alone"



"Hurry up and get it over!"



Kristin....your not talking?



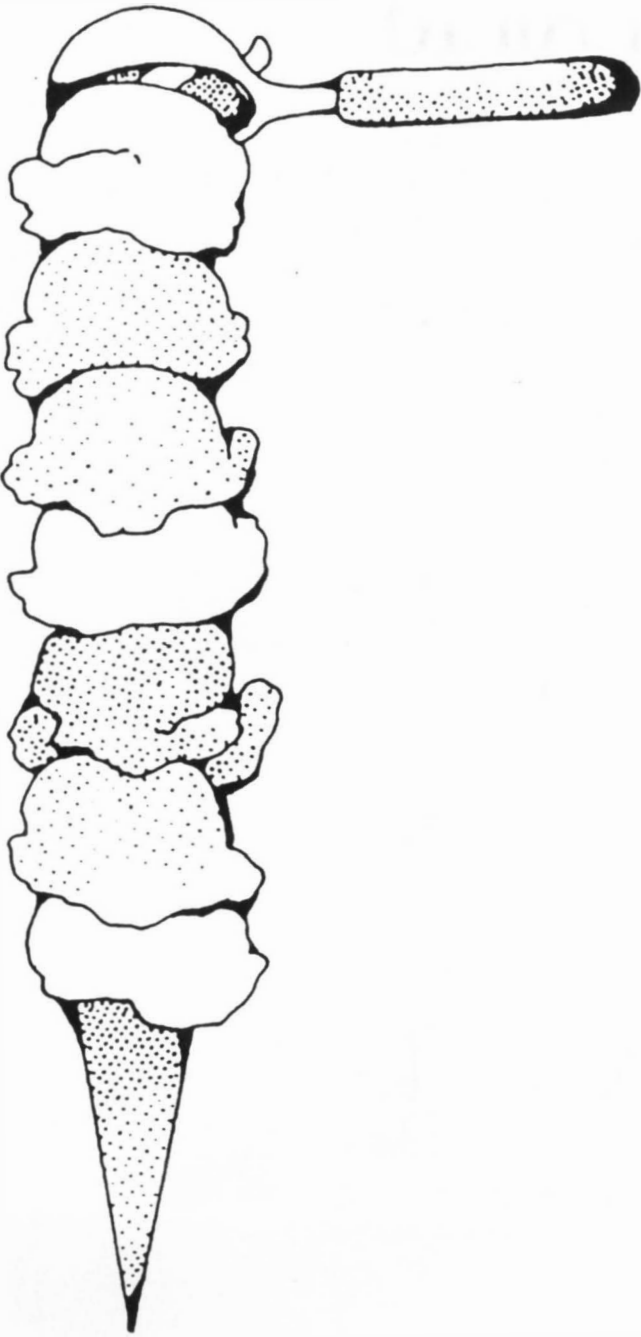
"Where's the food?"



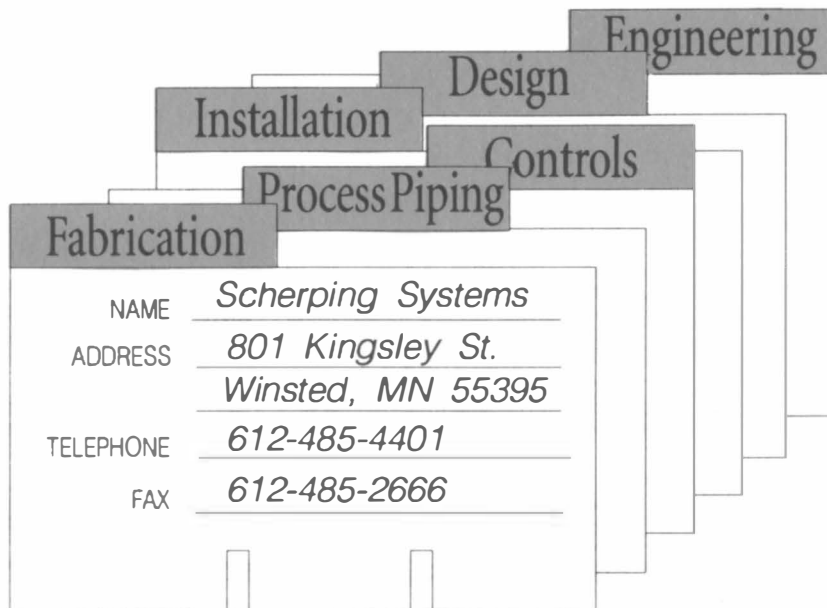
"WOW!...What a set up"



# Autographs



# Look Us Up For All Your Equipment & Service Needs




You can find us working in a number of areas to help you with your equipment & service needs. As a leading equipment manufacturer in the dairy industry for over 25 years, we have gained a great deal of experience to provide you with the products & services that you need. So, however you came to hear about us, take another look & let us help you in even more ways.



**Scherping Systems**

P. O. Box 10, Winsted, MN Tel [612]485-4401 Fax [612]485-2666





Thanks to  
MEGALAC,  
some cows  
make more  
money than  
others.

Your cows could make more money, too, with MEGALAC® rumen bypass fat in their ration. MEGALAC provides the extra energy many cows need in early lactation to help raise production peaks, maintain body condition and improve reproductive performance.\* All of which can mean more profit for you, today and tomorrow.

Find out how you can profit from MEGALAC. Consult your nutritionist or call 1-800-526-3563 for free information on feeding the high-producing cow. MEGALAC. *Your cows are worth it.*

---

MEGALAC tops other rumen bypass fats:

- Highest **measured** NEL
  - Lowest stearic acid content
  - Most university research
  - Easy to mix and pellet
  - Won't freeze or melt
  - Used by more dairy producers
- 

\* Nutritional benefits/parameters will vary among individual animals.

©1995 Church & Dwight Co., Inc. MEGALAC is a registered trademark of Volac Limited and is licensed to Church & Dwight Co., Inc. Church & Dwight Co., Inc., 469 N. Harrison St., Princeton, NJ 08543-5297

**MEGALAC**  
Rumen Bypass Fat

