

South Dakota State University
**Open PRAIRIE: Open Public Research Access Institutional
Repository and Information Exchange**

Cooperative Extension Circulars: 1917-1950

SDSU Extension

1-1924

Gift Suggestions

Helen Day Lorshbough

Follow this and additional works at: http://openprairie.sdstate.edu/extension_circ

Recommended Citation

Day Lorshbough, Helen, "Gift Suggestions" (1924). *Cooperative Extension Circulars: 1917-1950*. Paper 178.
http://openprairie.sdstate.edu/extension_circ/178

This Circular is brought to you for free and open access by the SDSU Extension at Open PRAIRIE: Open Public Research Access Institutional Repository and Information Exchange. It has been accepted for inclusion in Cooperative Extension Circulars: 1917-1950 by an authorized administrator of Open PRAIRIE: Open Public Research Access Institutional Repository and Information Exchange. For more information, please contact michael.biondo@sdstate.edu.

Extension Circular No. 179

GIFT SUGGESTIONS

by

Helen Day Lorshbough
Assistant Clothing Specialist.

EXTENSION SERVICE
South Dakota State College
W. F. Kumlien, Director
Brookings, S. Dak.

Cooperative Extension Work in Agriculture
and Home Economics, South Dakota State
College and United States Department of
Agriculture Cooperating.

Distributed in furtherance of Acts of Congress of May 8 and June 30, 1914.

GIFT SUGGESTIONS

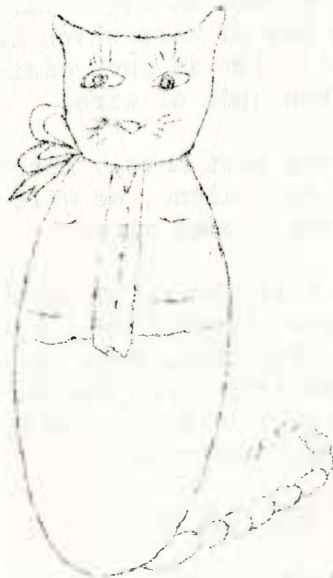
The time is drawing near when everyone wishes to remember friends and relatives by some token. There is no gift any more acceptable than some small hand-made article such as a handkerchief, toy for some child, bead necklace, et

You will find in this circular a few suggestions for this type of gift. Current magazines also have a variety of suggestions at this time of year.

TOYS FOR CHILDREN

There are always a number of old stockings partly worn out and yet just good enough that we dislike to burn them. These partly worn stockings can be utilized in making of toys for children.

Perhaps the most loved "stocking" toy is the nice smooth kitty made from an old silk hose. Very little material except the stocking is needed, and all of it can no doubt be found at home by looking through the odds and ends of ribbons, buttons and threads which accumulate so readily.



KITTY

DIRECTIONS FOR MAKING "KITTY"

Take a stocking (silk is preferable) Cut the foot off just above the heel in the form of a curve to make the ears. Stitch this across on wrong side on the sewing machine. Turn to the right side and stuff the head and body with cotton until the stocking is well filled out and smooth.

For the neck - Wrap around the stuffed stocking heavy thread or embroidery cotton the color of the stocking. When the stocking is stuffed to the length desired for the body, tie firmly. Do not cut the stocking, but continue as follows:

For the tail - Tie the stocking tightly at intervals of $1\frac{1}{2}$ to 2 inches until the ribbed or double portion of the stocking is reached, then cut it off close to the last tied place.

For the eyes - Sew on colored buttons or use two-holed buttons. Work the nose, mouth whiskers and vest with embroidery cotton.



JIMMY THE CLOWN

An inexpensive doll and one which the children will dearly love because he can be made to perform all sorts of antics, is "Jimmy the clown doll".

TO MAKE "JIMMY"

Take 2 pieces of medium weight wire (stove pipe wire will do) each 22 inches long. Allow 5 inches for each arm on each piece of wire.

Make a loop in first wire at 5 inch point and bring other end of wire down from loop to form part of body and one leg. Do likewise with second piece of wire twisting around the loop made in first wire. Make a small loop in end of wire which is to form hands and feet. (It is much easier to cover these loops than ends of wire)

Since Jimmy must have a more substantial body than the wire alone, we will take cotton batting and wrap around wire.

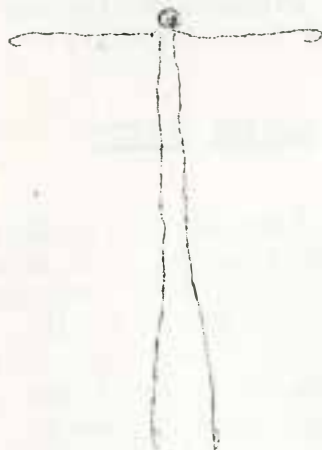
When you have the cotton placed on the wire, wind thread tightly over cotton to hold it in place. Wrap arms, body and legs in this manner. The arms and legs should both be covered with pieces of old white stockings or light weight knit underwear.

FOR THE HEAD

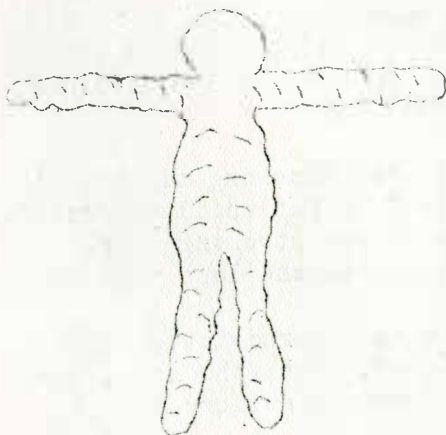
Take a piece of cotton as large as head is desired, form into ball and fasten to loop of wire between the arms. The head may be fastened in another way also. It may be covered and finished and then fastened to wire with heavy thread so that the neck is more limber.

TO COVER THE HEAD

Take a piece of soft white silk such as China silk - draw smooth over head. Use black ink (India ink is best) to make eyes, nose, mouth. Use yarn for the hair, catching loops of yarn at intervals with needle and thread



Wire Foundation



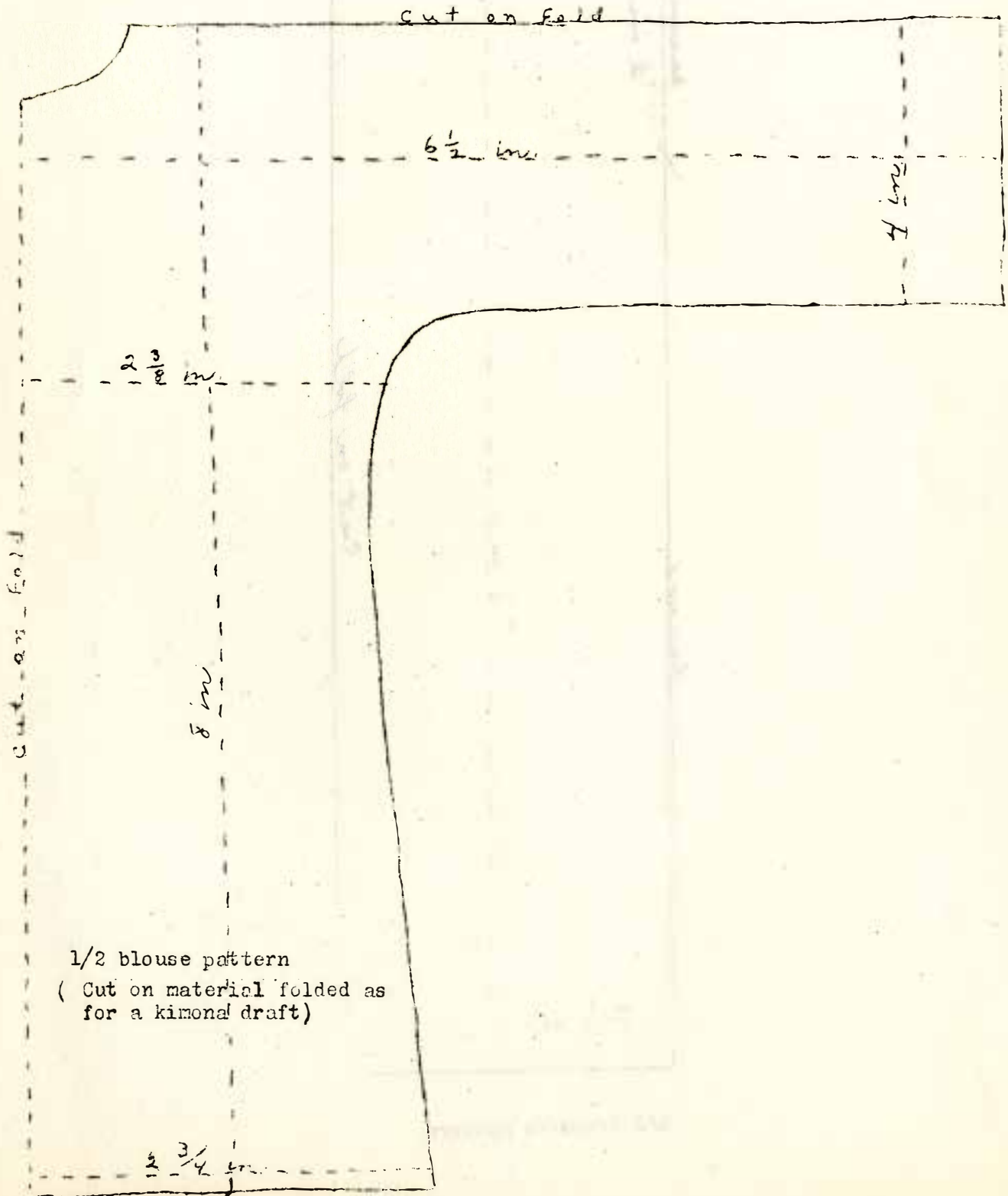
Cotton Covered Foundation

PATTERNS FOR SUIT

The patterns given are for 1/2 the suit. Measurements given are those used for the 22 inch body described. These measurements will vary with size of doll.

Seams and hems are not allowed in these patterns. Small pieces of left-over materials can be used for the suit.

BLOUSE



1/2 blouse pattern
(Cut on material folded as for a kimona draft)

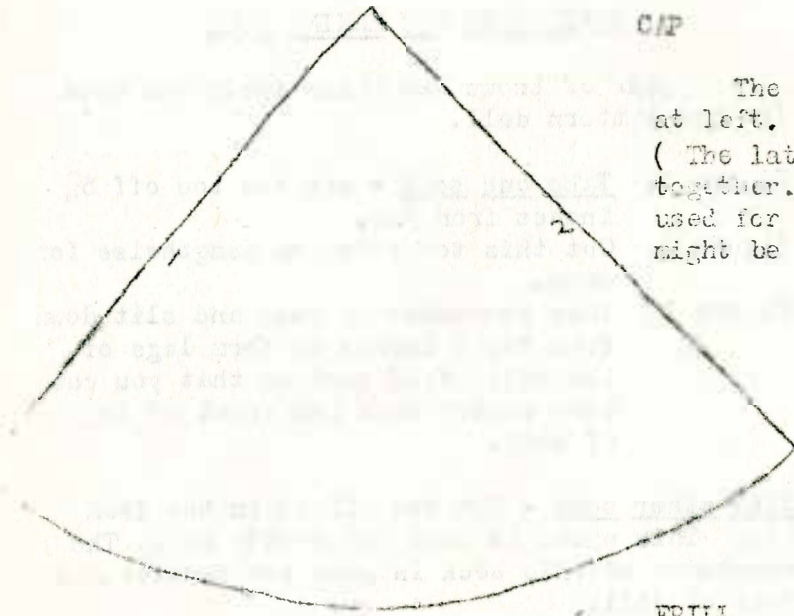
TROUSERS



1/2 trousers pattern

5.

C/P



The cap is made from pattern as shown at left. Cardboard or buckram can be used. (The latter is best). Stitch edges 1 and 2 together. Cover with same kind of material used for suit or some contrasting material might be used.

FRILL

The frill used around the neck is made from a piece of material $3\frac{1}{2}$ inches wide and 5 inches long. Join the ends and hem both edges.

TRIMMING

The trimming for the suit may be varied. Crocheting or blanket stitch may be used on bottom of sleeves, blouse and trouser legs. Also on each side of frill. Crochet a chain long enough to tie sleeves at each wrist, bottom of trousers, waist line, and around center of frill at neck.

BUTTONS

Button may be used for the front of the suit if desired. Imitation buttons may be made right on the material by using needle and thread (same as trimming on suit and chain stitching in circles).

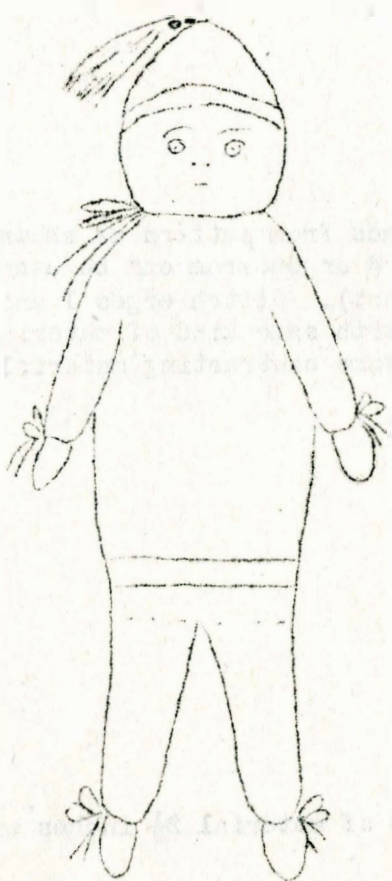
SHOES

Jimmy must have some shoes so we bend the end of each leg to form a foot. The shoes are made of heavy crochet cotton, either black or in colors. Use single crochet making bottom of shoe flat then drop stitches to form shape of shoe. Place a small piece of cardboard in bottom of shoe to help hold shape of shoe. Slip these over feet and catch in place with a few small stitches.

Another type of doll is made from a pair of men's socks. The socks with white toes, heels and tops make a very clever doll. Other kinds may be used however.

DIRECTIONS FOR MAKING DOLL

A pair of brown and white socks was used for the pattern doll.



Sammy Sock

- Figure 1. Take one sock - cut the toe off 5 1/2 inches from tip.
- Figure 2. Cut this toe piece in lengthwise for arms.
- Figure 3. Take remainder of sock and slit down from tip 6 inches to form legs of the doll. Fold sock so that you cut thru center back and front of leg of sock.

Take other sock - Cut toe off 5 1/2 inches from tip. This piece is used for doll's cap. The remainder of this sock is used for sweater and face of doll.

Turn pieces for arms and legs to wrong side and stitch. Turn right side out. Stuff body until very plump, then sew up the opening where stuffing was put in. Pull the top of second sock down over stuffed body so that the ribbed part can be rolled up for the lower part of sweater. The heel forms the face of the doll. Stitch up the opening in the portion of sock just used. Eyes, nose and mouth should be worked with colored embroidery thread.



Fig. 1



Fig. 2

CAP

Slip tip of second sock over top to form a cap. Cap can be caught in place with a few slip stitches to prevent it from being lost.

ARMS

Stuff arms (very solid). Close the opening stitch, turn edges down and fasten to place on body of doll.

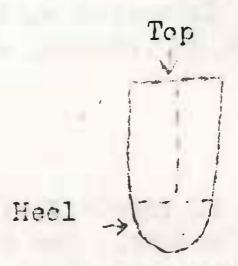


Fig. 3

TASSELS

Make tassels out of yarn for cap. Also tie yarn tightly around neck, wrist and ankles. (Use tassels here too if desired).

The tassel for cap is made as follows:

Use yarn which harmonizes with color of doll. Wrap yarn around a cardboard about 2 1/2 inches long. When enough yarn has been wound around, slip it off the cardboard, tie firmly in the center and cut the looped ends. Trim until even. Smaller tassels for wrists and ankles can be made in same way.

HANDKERCHIEFS

There is an endless variety of attractive handkerchiefs which may be made from pongee, crepe de chine, handkerchief linen or batiste by drawing in colored threads. Choose material in which the threads are not too fine or uneven, then proceed by drawing one thread clear out wherever the design is to be. Pull the next thread out far enough to tie it with a single knot to the center of the long colored thread. Catch the revelling at the other end and carefully work the colored thread along. Six strand colored embroidery floss should be used for the colored threads.

If there is any difficulty in drawing the thread thru, the following method may be used. Draw one thread, leave one, and draw out the next. Tie the thread left to the center of the long colored thread with a single knot and carefully draw through as before. There is usually no difficulty in drawing threads in batiste and pongee.

The hems of handkerchiefs may be finished in one of three different ways:

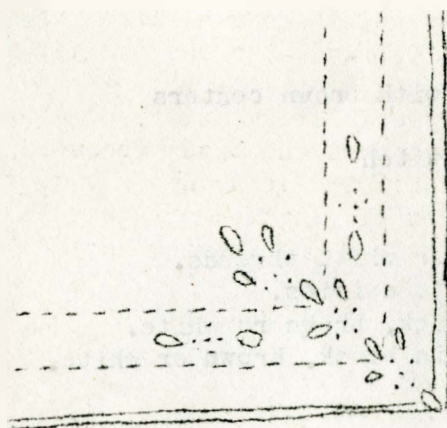
1. Rolled and whipped
2. Hemstitched
3. Hemmed down along a colored thread which has been drawn thru near the edge of the handkerchief.

WOMEN'S HANDKERCHIEFS

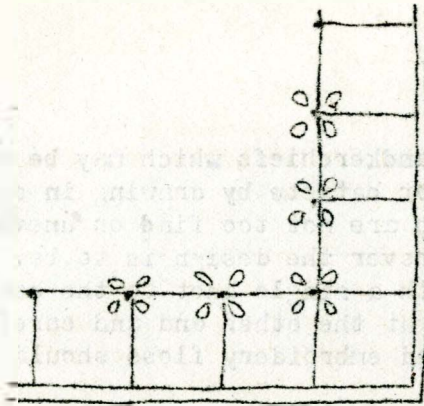
The following designs are attractive for handkerchiefs and may be worked in various colors as suggested below:

COLOR SCHEMES

1. Rose linen
Black threads
mixed flowers
green leaves
2. Lavender linen
black or violet threads
mixed flowers
green leaves
3. White linen
green, blue or lavender threads
mixed flowers
green leaves

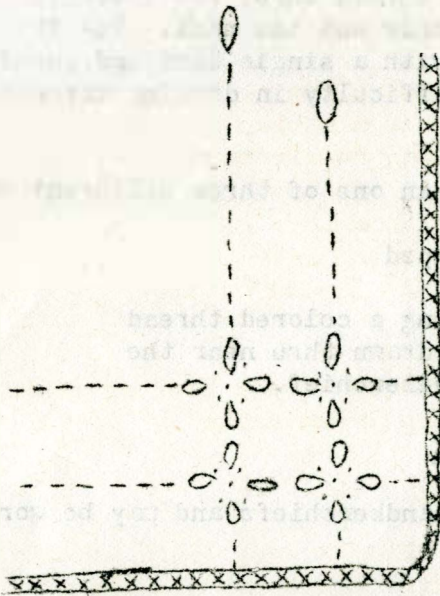
COLOR SCHEMES

1. White linen
yellow threads
yellow and blue flowers
blue dots



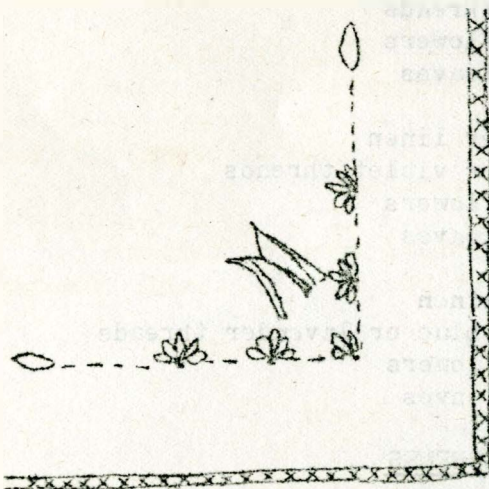
3. Green linen
black threads
pink flowers
black dots
3. Yellow linen
black threads
white or orange flowers
black dots

COLOR SCHEMES



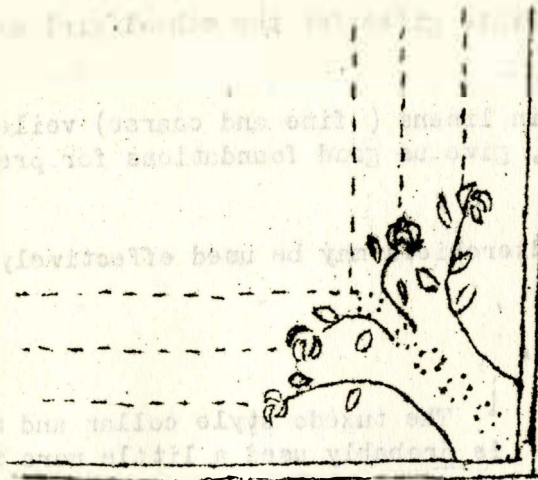
1. Lavender linen
black threads
mixed flowers - pink, yellow,
lavender and blue.
Black cross-stitch
green leaves.
2. White linen
Green or blue threads
Pink or mixed flowers
Green or blue cross-stitch
green leaves.
3. Blue linen
black or white threads
pink, yellow or mixed flowers
black or white cross-stitch
green leaves

COLOR SCHEMES



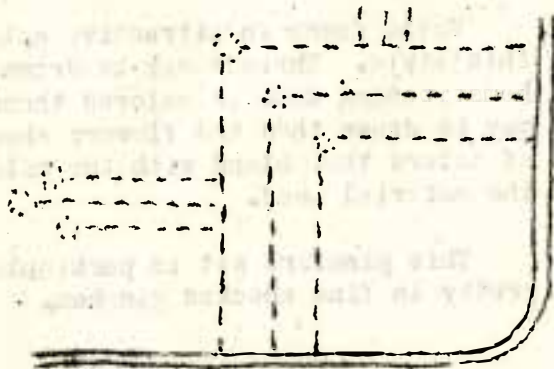
1. White linen
tan or blue threads
yellow daisies with brown centers
initial worked in tan or blue
tan or blue cross-stitch.
2. Yellow linen
brown threads
white daisies with brown centers
brown initial
brown cross-stitch
3. Blue linen
black, brown or white threads.
yellow or white daisies.
initial in black, brown or white.
cross stitch in black, brown or white.

COLOR SCHEMES



1. Gray linen
black threads
pink roses - 3 shades
black, french knots or dots,
green leaves.
2. Lavendar linen
black or violet threads
mixed flowers - pink, blue, yellow
and lavender. (pale colors)
black or violet french knots or dots
green leaves

COLOR SCHEMES

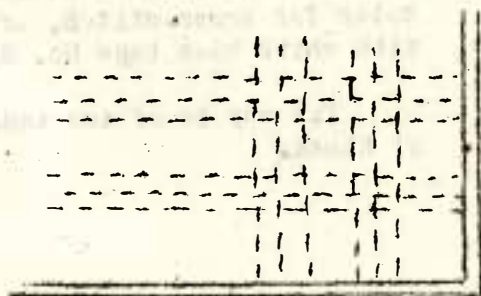


1. Green linen
black threads
pink, French knots
2. Tan linen
brown threads
yellow French knots
3. Blue linen
black or darker blue or white threads
pink french knots

MEN'S HANDKERCHIEFS

Very attractive handkerchiefs may also be made for men. Such materials as linen, batiste and pongee are used. These handkerchiefs are usually of a rather plain type. Hemstitched hems and initials are used extensively.

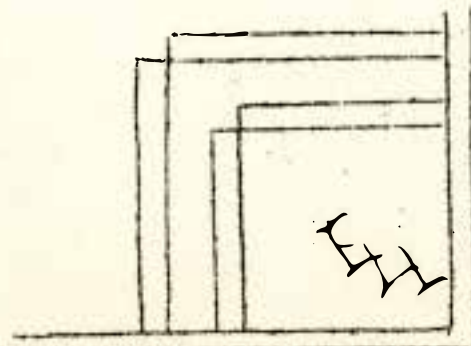
The following illustrations and suggested color schemes may be of value to you.



COLOR SCHEMES

1. Pongee
brown, blue or brown and orange threads.
2. White linen or batiste
blue, tan or lavender threads.

COLOR SCHEMES



1. Gray linen
blue, lavender or rose threads
and initials.
hemstitched hem
2. Tan linen
green, blue or brown threads and
initials.
Hemstitched hem.

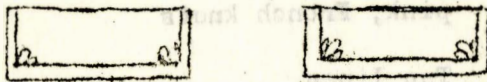
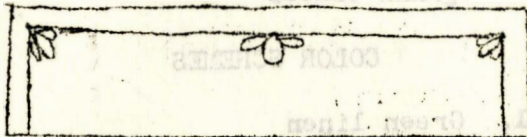
Many other designs for both men's and women's handkerchiefs may be found in magazines.

Collar and cuff sets are very appropriate gifts for the school girl as well as for older women.

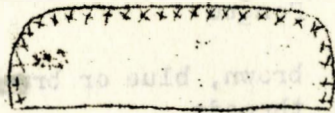
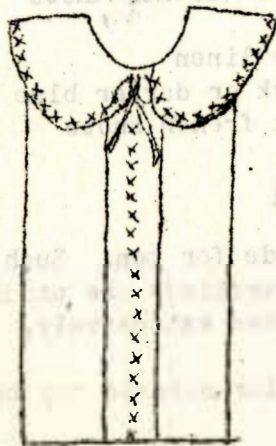
The pretty colorings now obtainable in linens (fine and coarse) voile, fine checked-ginghams, batistes and organzas, give us good foundations for pretty sets. Pongee is also an ever popular fabric .

Designs similar to those used in handkerchiefs may be used effectively for trimming collars and cuffs.

The pinafore or tuxedo are both good.



Tuxedo Style



Pinafore Style

The tuxedo style collar and cuff sets is probably used a little more than the pinafore style.

Voile makes an attractive set for this style. Threads may be drawn and hemstitching done or colored threads may be drawn then the flowers should be of colors that blend with the color of the material used.

This pinafore set is particularly pretty in fine checked gingham.

SUGGESTIVE COLORS

Blue and white	
green "	"
red "	"
brown "	"
yellow "	"
lavendar "	"

Use thread in same or harmonizing color for cross-stitch, or bind edges with white bias tape No. 6.

Tie may be of two tone ribbon or of black.

OTHER SUGGESTIONS FOR HOMEMADE GIFTS

- I. Apron
- II. Underwear
 1. plain, simple
- III. Flowers
 1. yarn
 2. organdie
 3. silk
- IV. Dresser Scarf
- V. Luncheon Set
- VI. Bed Spread
- VII. Toys - Bunny, Elephant, Puppy.
 1. Turkish Toweling
 2. Canton flannel
 3. Eiderdown
- VIII. Wax Articles
 1. Beads
 2. Pendants
 3. Pins
 4. Hair Pins
 5. Flowers
 6. Buckles
 7. Grasses & Weeds - (Dissolve wax in alcohol & use small brush to paint with)

LX. GAMES FOR CHILDREN

Ring the Clothes-Pin

(Take a piece of board. Bore holes in board large enough in which to insert clothes pins. Discarded fruit jar rings can be used to "ring" the clothes-pin heads. Size of board will depend on number of clothes-pins to be used.)

Pinning the tail to the Donkey

(Draw with crayons the picture of a donkey (minus tail) on a piece of muslin. Draw a picture of the tail on a separate piece of material and cut out. The child when blindfolded attempts to pin the tail on the donkey.

X. PURSE FROM INNER TUBE.

Take an old inner tube and cut piece off in desired size and shape. Scrub well to remove all dust. If tube is not wide enough pieces can be inserted. Use wrong side of tube for outside of bag. With leather punch cut holes along bottom and sides to draw narrow strips of tube thru to make closings. Handles can be made from the narrow strips also. A great variety of bags can be worked out in shape, size and trappings.