

2017

Using Structure from Motion Mapping to Record and Analyze Details of the Colossal Hats (Pukao) of Monumental Statues on Rapa Nui (Easter Island)

Sean W. Hixon
Penn State University

Carl P. Lipo
Binghamton University--SUNY, clipo@binghamton.edu

Terry L. Hunt
University of Arizona

Christopher Lee
California State University Long Beach

Follow this and additional works at: https://orb.binghamton.edu/anthropology_fac

 Part of the [Archaeological Anthropology Commons](#)

Recommended Citation

Hixon, Sean W.; Lipo, Carl P.; Hunt, Terry L.; and Lee, Christopher, "Using Structure from Motion Mapping to Record and Analyze Details of the Colossal Hats (Pukao) of Monumental Statues on Rapa Nui (Easter Island)" (2017). *Anthropology Faculty Scholarship*. 33.

https://orb.binghamton.edu/anthropology_fac/33

This Article is brought to you for free and open access by the Anthropology at The Open Repository @ Binghamton (The ORB). It has been accepted for inclusion in Anthropology Faculty Scholarship by an authorized administrator of The Open Repository @ Binghamton (The ORB). For more information, please contact ORB@binghamton.edu.

Using Structure from Motion Mapping to Record and Analyze Details of the Colossal Hats (*Pukao*) of Monumental Statues on Rapa Nui (Easter Island)

Sean W. Hixon, Carl P. Lipo, Terry L. Hunt, and Christopher Lee

Explanation and conservation in archaeology require detailed representations of the archaeological record. For conservation purposes, our goal is to document the current configuration of the record with as much detail as possible. For archaeological analysis,

we often seek to generate accurate descriptions of artifacts that include measures of shape and a record of physical attributes. Structure from motion (SfM) mapping offers a cost-effective method of achieving these goals by extracting three-dimensional data

ABSTRACT

Structure from motion (SfM) mapping is a photogrammetric technique that offers a cost-effective means of creating three-dimensional (3-D) visual representations from overlapping digital photographs. The technique is now used more frequently to document the archaeological record. We demonstrate the utility of SfM by studying red scoria bodies known as *pukao* from Rapa Nui (Easter Island, Chile). We created 3-D images of 50 *pukao* that once adorned the massive statues (*moai*) of Rapa Nui and compare them to 13 additional *pukao* located in Puna Pau, the island's red scoria *pukao* quarry. Through SfM, we demonstrate that the majority of these bodies have petroglyphs and other surface features that are relevant to archaeological explanation and are currently at risk of continued degradation.

El mapeo de estructura a partir del movimiento (SfM por sus siglas en inglés) es una técnica fotométrica de bajo costo que permite crear representaciones visuales en tres dimensiones a través de la superposición de fotografías digitales. Actualmente la técnica es usada con más frecuencia para el registro de datos arqueológicos. Aquí demostramos la utilidad de la técnica SfM para estudiar los elementos esculpidos de escoria roja conocidos como *pukao* de Rapa Nui (Isla de Pascua, Chile). Se crearon imágenes en 3D de 50 *pukao* que alguna vez decoraron las enormes estatuas (*moai*) de Rapa Nui y se compararon con 13 *pukao* adicionales localizados en Puna Pau, la cantera en la isla donde se extraía la escoria roja utilizada para los *pukao*. A través del uso de la técnica SfM se demuestra que la mayoría de estos elementos tiene petroglifos y otros rasgos superficiales que son relevantes para las explicaciones arqueológicas y que actualmente se encuentran en riesgo de degradación continuada.

Advances in Archaeological Practice, page 1 of 16
Copyright 2017 © Society for American Archaeology
DOI:10.1017/aap.2017.28

from overlapping sets of two-dimensional images. In this paper, we demonstrate the effectiveness of SfM mapping for studying and documenting the *pukao* of Rapa Nui (Easter Island, Chile). The products of SfM mapping illustrate how the technique provides essential data for archaeological explanation and preserves a record of form and existing rock art. Information about *pukao* variability in form and surface details contributes directly to explanations of *pukao* transport and the placement of *pukao* atop statues (*moai*). Given that *pukao* are exposed and at risk of degradation, the use of SfM also attends to the need for preservation of existing petroglyphs for this UNESCO World Heritage Site (Carrero-Pazos et al. 2016).

PHOTOGRAMMETRY AND STRUCTURE FROM MOTION (SfM)

Photogrammetry is the practice of using photographs to make measurements. SfM is a subset of photogrammetry that consists of a range imaging technique that models three-dimensional structure. Applications of SfM mapping in archaeological analysis have rapidly expanded in the past decade (e.g., De Reu, De Clercq et al. 2013; De Reu, Plets et al. 2013; Fritz et al. 2016; Lerma and Muir 2014; McCarthy and Benjamin 2014; Meijer 2015), but the idea of using photogrammetry in archaeology is not new. Nearly 50 years ago, Atkinson (1968) used a stereometric camera system and Thompson-Watts photogrammetric plotter to record petroglyphs at Stonehenge, and others continued this practice (e.g., Dann and Jones 1984; Fussell 1982; Ogleby and Rivett 1985). While SfM has its roots in analog photography, the emergence of inexpensive high-resolution digital imagery offers new areas for systematically and computationally extracting three-dimensional information across large numbers of overlapping photographs. Spurred by the ubiquity of digital photographs of scenes on the Internet that recorded common tourist destinations, University of Washington researchers (Snaveley et al. 2006) created a process that assembles three-dimensional models based on a series of photographs that are matched through an innovative scale-invariant algorithm known as scale-invariant feature transform (SIFT) (Lowe 2004). The fact that the photograph matching was scale-invariant enabled the process to produce models with virtually any group of overlapping photographs. All that is required is that any feature is photographed from at least three different views. In this way, the thousands of photographs from a given tourist site that are available online can be algorithmically assembled into a remarkably accurate three-dimensional model. This approach is effective even when those photographs were taken at different times, with different lighting conditions, and from any number of angles. The output of the process includes a three-dimensional point cloud that represents the surfaces of the object(s) shown in the shared images as well as a mosaic of overlapping images.

Since these initial developments, SfM has developed into a powerful photogrammetric tool for recording architectural and archaeological features (Pollefeys et al. 2003a, 2003b). Though not strictly necessary, if photographs are taken in a systematic way with consistent overlap (usually between 70% and 90% in side and end-lap), then the process can produce remarkably detailed and highly accurate models. SfM mapping, as a result, now can be done routinely to study single objects, buildings, and, with aerial platforms, entire landscapes. With software that extends the basic SfM method to include spatial information, one can now render high-resolution scaled models of three-dimensional objects, produce georeferenced orthophotographs, create digital elevation models (DEMs), and establish contoured topographic representations.

There are many advantages to SfM relative to traditional photogrammetry and laser scanning. Specifically, SfM mapping involves less monetary cost, specialized equipment, and photogrammetric expertise (De Reu, Plets et al. 2013; Meijer 2015; Papadaki et al. 2015; Rütther et al. 2012). Additionally, a growing number of applications document that SfM mapping and laser scanning produce models with comparable accuracy (e.g., Brutto and Meli 2012; Galeazzi et al. 2014; Lerma et al. 2014; Lerma and Muir 2014; Mancini et al. 2013; Stal et al. 2012), and comparable accuracy exists even when mapping small and relatively featureless objects (Clini et al. 2016; Koutsoudis et al. 2013).

Laser scanning is an alternative to SfM, but it has not become standard practice in archaeology. In the case of documenting rock art, laser scans can be of high quality (Johansson and Magnusson 2004; Papadaki et al. 2015), but the cost of laser scanners is high, which is a factor that limits their application in most projects (Goldhahn and Sevara 2011). Also, because laser scanners rely on active sensing using emitted electromagnetic radiation, they are sensitive to direct sunlight and often require tents and other materials to control natural light (Johansson and Magnusson 2004). In contrast, SfM mapping is a passive form of remote sensing that operates best under natural light conditions (Vilas-Estevez et al. 2016).

The relative benefits of SfM mapping and the absence of negative detractors help explain the growing use of this technique in archaeology. Archaeologists have applied SfM mapping to underwater landscapes (e.g., Bojakowski et al. 2015; Henderson et al. 2013; Johnson-Roberson et al. 2016; McCarthy and Benjamin 2014; Meline et al. 2012; Mertes et al. 2014), terrestrial landscapes (e.g., Doneus et al. 2011; Howland et al. 2014b; Mancini et al. 2013; Schönberger et al. 2014; Sevara 2013; Smith et al. 2014; Tscharf et al. 2015; Verhoeven 2011), and complex built structures such as monuments (e.g., Bevan et al. 2014), quarries (e.g., Verhoeven, Taelman et al. 2012), houses (e.g., Curry and Gallaway 2016), courtyards (e.g., Levy et al. 2014), museums (e.g., Jamhawi et al. 2016), and reconstructed villages (e.g., Dunn and Woolford 2012; Dunn et al. 2012). Artifacts that are frequently mapped using SfM include pottery (e.g., Koutsoudis and Chamzas 2011), lithics (e.g., Clarkson and Hiscock 2011; Morales et al. 2015), and faunal remains (e.g., Betts et al. 2011; Niven et al. 2009).

The use of SfM mapping in documenting other aspects of the archaeological record has also grown in recent years. Specifically, SfM mapping increases detail in the recording of excavations



FIGURE 1. Photograph of red scoria *pukao* restored atop *moai* on an *ahu* at Anakena, located on the northern side of the island. Note that red scoria here is also used in the *ahu* lentils in front of the *moai* (photograph by T. Hunt).

(Arles et al. 2013; De Reu, Plets et al. 2013; Forte et al. 2012; Koenig et al. 2017; Roosevelt et al. 2015), and the need for photographs and SfM model post-processing provides an avenue for engaging the public through citizen science (Bonacchi et al. 2014; Keinan 2014; McCarthy 2014; Means 2015; Ritsos et al. 2014). Additionally, archaeologists and museum officials have used the products of SfM mapping to enhance data visualization in museum displays and thus aid public outreach (e.g., Cosmas et al. 2001; Howland et al. 2014a; López-Romero 2014; Means et al. 2013; Smith et al. 2012; Vincent et al. 2013; Williams and Twohig 2015).

SfM has the potential to make significant contributions to the documentation of rock art. Because of its ability to record color and subtle surface features, archaeologists have recently used SfM to profile a variety of petroglyphs and pictographs (e.g., Bertilsson 2015; Caninas et al. 2016; Hameeuw et al. 2016; Lerma and Muir 2014; Plets et al. 2012; Tomášková 2015; Wefers et al. 2016; Zeppelzauer et al. 2016). Traditional recording methods for documenting rock art, such as freehand drawing, tracing, and photography, are relatively limited in terms of the information captured (Bertilsson 2015; Caninas et al. 2016; Meijer 2015; Stanbury and Clegg 1990). SfM is well-suited for identifying petroglyphs on uneven surfaces, such as those often found in caves (Caninas et al. 2016; Fritz et al. 2016), and SfM models give spatial context to petroglyphs that is helpful for interpretation (Alexander et al. 2015; Janik et al. 2007). Because of the value of SfM for the interpretation of rock art, archaeologists have recently explored methods of digitally enhancing model visualization (e.g., Carrero-Pazos et al. 2016; Vilas-Estevez et al. 2016), have developed specialized tools for efficiently collecting rock art photographs (e.g., Höll et al. 2014), and have segmented rock art models to effectively store and query models in databases (e.g., Poier et al. 2016; Zeppelzauer et al. 2015; Zeppelzauer et al.

2016). Significantly, SfM mapping has a substantially lower impact on rock art than tracing, and monitoring of archaeological features through SfM mapping can be used to identify conservation priorities (Plets et al. 2012). While Chandler (2007) notes that analog methods of field recording remain dominant, it is likely that ease of high-resolution rock art mapping through SfM will make this technique a standard field recording strategy.

RAPA NUI MOAI AND PUKAO

Recording the complex form and subtle surface details of *pukao* through SfM mapping illustrates several of the valuable features of this mapping technique. *Pukao* are an ideal target for detailed recording through SfM mapping, because (1) current *pukao* form and past *pukao* transport are poorly documented and understood despite the frequent reference to *pukao* in narratives regarding Rapa Nui's past, and (2) *pukao* surface details are at risk of being erased by weathering.

Polynesians first colonized Rapa Nui around 1200 AD (Hunt and Lipo 2006) and, over the course of prehistory, constructed nearly 1,000 monumental statues (*moai*), which they placed upon platforms (*ahu*, Hochstetter et al. 2011). To top this feat of community-scale ingenuity, islanders also placed massive cylindrical bodies of red scoria (*pukao*) atop many (ca. 75) of the completed *moai*. The *pukao* are made of a relatively soft and coarsely vesicular material (red scoria) that varies in color from bright red to almost black on fresh surfaces. The prehistoric islanders quarried *pukao* from a volcanic vent known as Puna Pau and transported them to *ahu* located primarily along the coasts (Figures 1–2). The largest of the *pukao* is over 2 m in diameter, weighs approximately 12 metric tons, and was transported over 12 km. Quarrying activity at Puna Pau is largely evident during the

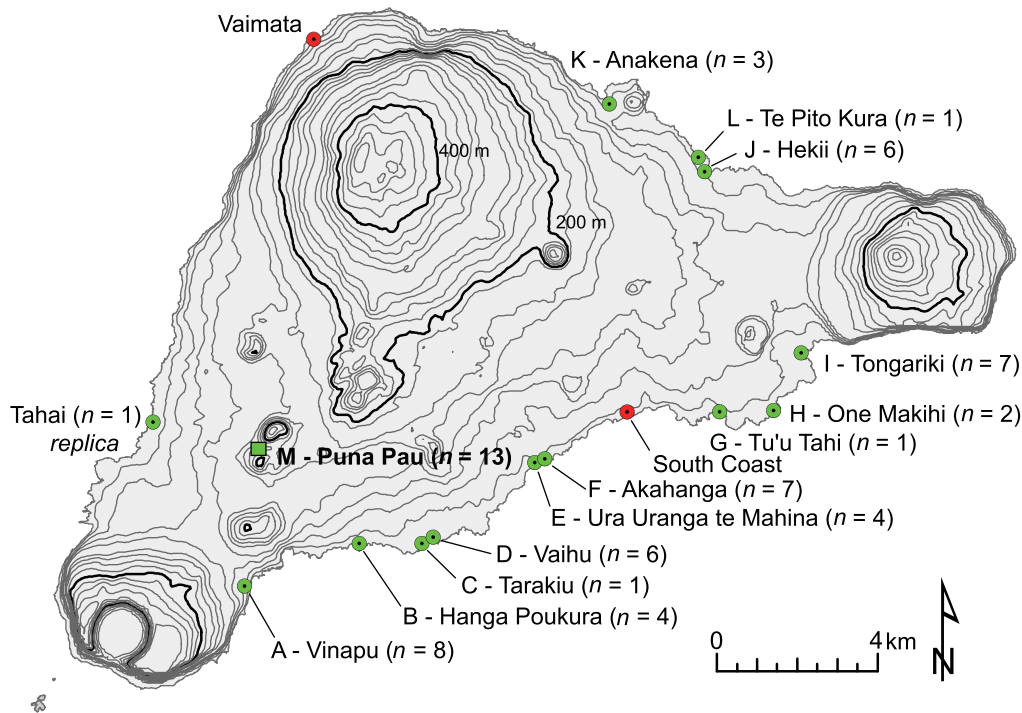


FIGURE 2. Map showing locations on Rapa Nui that yielded n usable models of scoria bodies (green). Locations marked in red include only *pukao* fragments that were not modeled. Letters associated with sites correspond to labels on *pukao* images in Figure 6. Note the inland *pukao* quarry of Puna Pau marked with square and bold in the southwest.

latter part of prehistoric occupation, between the fourteenth and seventeenth centuries (Hamilton 2013:100).

Like much of the monumental architecture on Rapa Nui (Charola 1997), *pukao* have suffered from damage and extensive weathering, and there is significant need for documentation and conservation efforts. Factors that contribute to the decay of *pukao* come from several sources. First, *pukao* once rested atop the heads of standing *moai*, so the initial source of damage occurred when *moai* fell. Some believe that *moai* were toppled in inter-group warfare (e.g., Diamond 2005; Flenley and Bahn 2003; Snyder et al. 1994). Roussel gives the earliest reports of *moai* toppling as the result of warfare in the mid-nineteenth century, but few of Roussel's contemporaries mention such warfare (Edwards et al. 1996:13). Scoresby Routledge (1917:335) recounts one oral account that describes that "the last one [*moai* with *pukao*] was overthrown by the fathers of the present old men who as boys assisted their fathers – that is, about 1835." Social unrest following European contact (Fischer 2005; Hunt and Lipo 2011) and catastrophic natural events such as earthquakes (Edwards et al. 1996) contributed to the falling of *moai* over time. James Cook's 1774 visit to the island is the first mention of fallen *pukao*. Cook's naturalist, Johann Forster, for example, explicitly noted a fallen *pukao*: "We reached the east side of the island, near a range of seven pillars or statues, of which only four remained standing, and one of them had lost its cap." (Kahn 1968:336)

Following the toppling of *moai*, islanders used fallen *pukao* as a source of raw materials. Katherine Routledge (1998:199) notes the reuse of *pukao* "as building materials." Additionally, Seager Thomas (2014:107) suggests the possible reuse of red scoria in

inhumation burials and mentions a *pukao* from the vicinity of Ahu Tahai that was carved into a cross for the Catholic cemetery in Hanga Roa. Native Rapanui also informed an archaeological team in the 1960s that another *pukao* in the vicinity "had been cut up to use as building material" (Charola 1994:35). Along the Rapa Nui coastline, there are five *pukao* with slabs of scoria removed along the upper edge of the body. At least some of these features were present during Cook's visit to the island in 1774, for he notes that "[i]n some, the upper corner of the cylinder was taken off in sort of a concave quarter-round; but in others the cylinder was entire" (Ruiz-Tagle 2005:160). Palmer (1870:179) noticed two skulls embedded in a *pukao* with a slab missing, and Katherine Routledge (1998) and Alfred Métraux (1971) also noted the association of these *pukao* with death. Even unfinished *pukao* at Puna Pau exhibit evidence of being used as a raw material source. For example, Seager Thomas (2014:106) argues that "over the years, red scoria originally from Puna Pau has been systematically robbed from *ahu*, with topknots cut and gouged away and granules from these spilled like blood over the *ahu* and around the heads of fallen *moai*."

Pukao also suffer from exposure to weather. Even in 1868, Linton Palmer (1869:374) noted that *pukao* "were much decayed by weather." By the time of his visit, the *pukao* had already experienced heavy erosion from physical and chemical processes independent of human action. Rapa Nui's coastlines are exposed to the winds and sea spray, and the island experiences an average of 1,130 mm of rainfall each year. The combined heavy showers and winds lead to mechanical erosion of *pukao*, and the results of the weathering are clays that settle in the interstices of the porous rock. When the clays get wet, they expand and create

internal stress that further contributes to the breakdown of rock. Crystallization of salt from sea spray also leads to mechanical breakdown of the red scoria.

In a few cases, intertidal wave action has led to significant erosion of *pukao*. A scoria body from a possible *pukao* near Ovahe and several *pukao* from Vaihu and Tongariki have been subject to this form of erosion. Such processes have a long history: Spanish visitors to the island in 1770 noted the presence of several *pukao* in the intertidal zone, and this led them to conclude that the “stone of which these columns are made is not native to the island” (Corney et al. 1908). In 1955, the Norwegian Archaeological Expedition rescued the *pukao* at Vaihu from the intertidal zone (Heyerdahl and Ferdon 1961). These *pukao* exhibit noticeably ablated surfaces.

Organisms such as algae, lichens, and domestic livestock have also played roles in the degradation of *pukao*. Algae and lichen leach out iron from red scoria, thus weakening the stone matrix, and the rhizomes or hyphae of lichens induce mechanical stress in the stone (Charola 1994:45). Lichens are particularly good at obscuring and destroying petroglyphs through time, since they tend to smooth edges and obliterate fine detail. Only limited conservation has focused on removal of lichen from *pukao*, because it is difficult to remove lichen without crumbling the stone into which rhizomes have penetrated.

Between 1888 and 1933, the island was host to a large sheep ranch operation of the Compañía Explotadora de Isla de Pascua (Charola 1994:27). For 45 years, the ranch administrators allowed 60,000 sheep to roam freely on the island. Coupled with the use of *pukao* scoria in the construction of historic walls to contain the herds, the sheep trampled over the archaeological record and broke *pukao* into smaller fragments. Today, grazing animals with access to some *pukao* continue to have damaging effects.

Many *pukao* now also contain Western graffiti. Most of the graffiti occurs in the quarry of Puna Pau, although its age is unclear.

Overall, these inorganic and organic processes have degraded the *pukao* seen today and highlight the importance of maintaining a record of remaining *pukao* variation. The *Rapa Nui Landscapes of Construction Project* (Hamilton 2007, 2013; Hamilton et al. 2011) completed some of the most recent work with *pukao* as part of the broader project of examining the significance of Rapanui stone use. While this project involved detailed surface and subsurface mapping of the *pukao* quarry of Puna Pau, the published research did not focus on recording existing individual *pukao* form and surface details. Researchers have made line drawings of some *pukao* petroglyphs from five *ahu* (Lee 1992; Van Tilburg and Lee 1987), but the abundance and associations of these surface details and the form of these *pukao* are poorly documented. Additionally, the form and surface details of *pukao* from seven additional *ahu* (Hanga Poukura, Tarakiu, Ura Uranga te Mahina, Tongariki, Te Pito Kura, Anakena, and Tu'u Tahu) are largely unknown. To fully and precisely document the diversity of *pukao* in a short amount of time, we relied on SfM mapping. SfM mapping provided a cost-effective approach for salvaging data from *pukao* in remote locations with difficult close access. These data form a baseline for an understanding of past *pukao* transport and for an appreciation of the diversity of *pukao* petroglyphs.

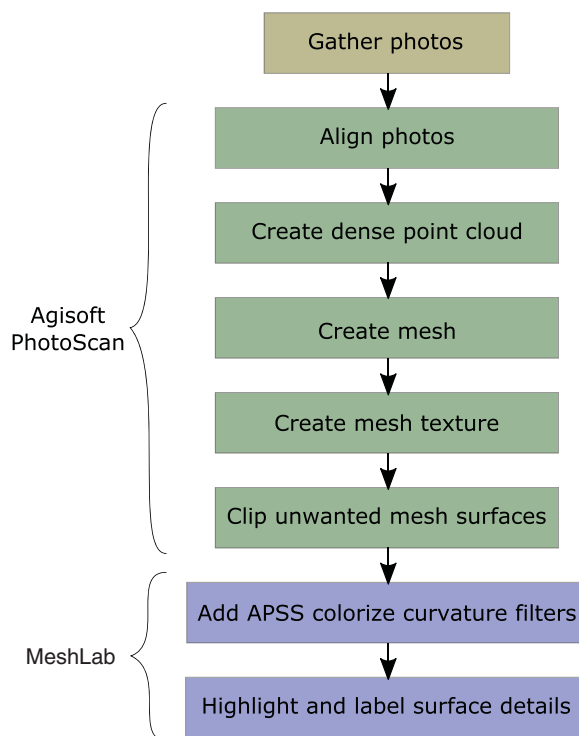


FIGURE 3. Flow chart of *pukao* model generation and analysis.

THREE-DIMENSIONAL MODEL GENERATION

The generation of models for SfM mapping can be broadly separated into steps of data acquisition and image processing. In May–June 2014, we located and photographed 63 *pukao* identified during a GPS survey led by Hunt and Lipo in previous years. We used two Nikon D7000 cameras to produce approximately 10,000 photographs that each contained embedded GPS coordinates. We collected all photos from the ground and used tapes to make absolute measurements of *pukao* dimensions. Absolute measurements provide a reference for the scale that becomes embedded in the SfM models. The requirements for taking photographs useful for SfM are fairly simple: Each photo must be taken in sufficient sunlight and from an array of unique viewpoints with sufficient overlap (Agisoft 2011). The degree of overlap that is sufficient depends on the nature of the object being mapped, but one typically wants to include 70–90% overlap between images. Minimally, one wants to ensure that every point on the object appears in at least three different images. Increasingly complex surfaces typically require more overlap and thus more photographs. Given the SfM’s scale-invariant algorithm for photograph matching, the focal length and resolution of collected images can vary, which further eases data collection for SfM mapping. The distance from the object determines the detail that can be discriminated. The closer one takes images, the more detail will exist in the final model.

In our study of *pukao*, we used image-processing software (Agisoft PhotoScan 1.0.4, 2014, Agisoft LLC, St. Petersburg,



FIGURE 4. One of 198 photographs (upper left) used to generate a PhotoScan cloud of 400,510 points (upper right) that define *pukao* 18 at Vaihu. After creating the point cloud, it is possible to construct the mesh with approximately 500,000 vertices and one million faces (lower left) and add texture to this mesh (lower right).

Russia) to match the photographs and to extract a representation of the *pukao* in the form of a large collection of three-dimensional points (point clouds) and reconstructed surface meshes. Agisoft is one of a variety of software choices, but it is one that archaeologists have used successfully in other contexts. Models produced with Agisoft PhotoScan have comparable accuracy to those produced with laser scanning (Barsanti et al. 2012; Brutto and Meli 2012; Galeazzi 2016) and to those produced with other SfM software (Curry and Gallaway 2016; Green

et al. 2014; Kersten and Lindstaedt 2012). Archaeologists have used Agisoft PhotoScan to map underwater landscapes (e.g., Balletti, Beltrame et al. 2015; Yamafune 2016), terrestrial landscapes (e.g., Balletti, Guerra et al. 2015; Howland et al. 2015; Verhoeven, Doneus et al. 2012), and excavations throughout the world (e.g., De Reu, De Clercq et al. 2013; De Reu et al. 2014; De Reu, Plets et al. 2013; Forte et al. 2012; Koenig et al. 2017; Roosevelt et al. 2015; Thomas and Kennedy 2016; Weßling et al. 2013; Wilhelmson and Dell'Unto 2015). Artifacts and features



FIGURE 5. Models with textured mesh for all *pukao*. Note that models are numbered according to database entry and lettered according to location in [Figure 2](#).

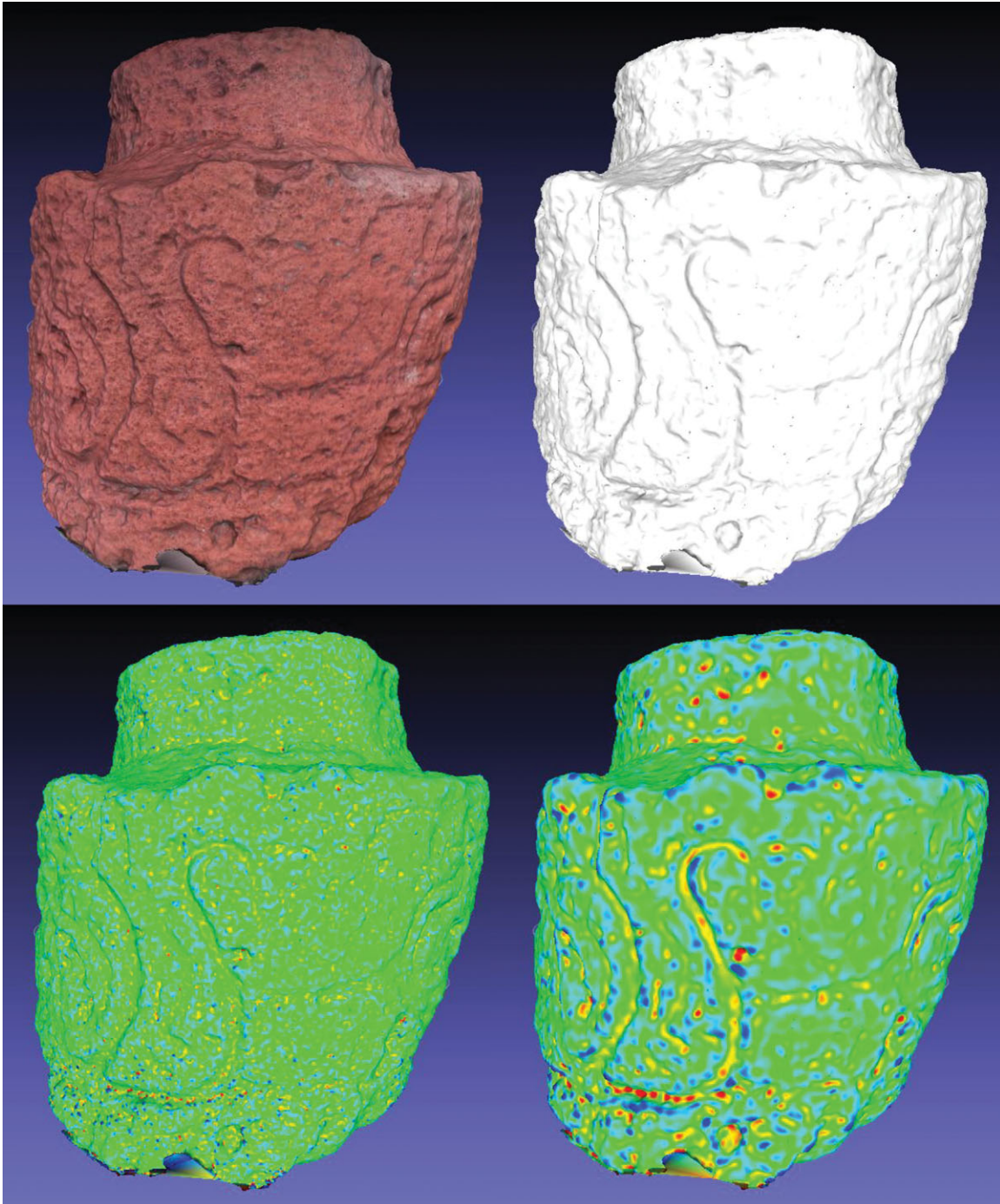


FIGURE 6. The mesh of *pukao* 18 with and without color (top). The colorless mesh can be colorized using the APSS colorize curvature filter in MeshLab to highlight etchings in the *pukao* surface (bottom). The scale of the curvature filter applied on the lower left image is 2, and that applied on the bottom right image is 8. Appropriate filters vary based on the width of a given etching.

mapped using the software include rock art (e.g., Fritz et al. 2016; Plets et al. 2012), earthen mounds (e.g., Magnani and Schroder 2015), roads (e.g., Monterroso-Checa and Gasparini 2016), and skeletal remains (e.g., Thanaphatarapornchai 2012). The ease of using Agisoft PhotoScan has made this software popular also

in community-based archaeology (e.g., Haukaas and Hodgetts 2016) and conservation (e.g., López-Romero et al. 2014).

Once we collected photographs of *pukao*, the next step involved aligning the camera positions for every photograph (Figure 3).

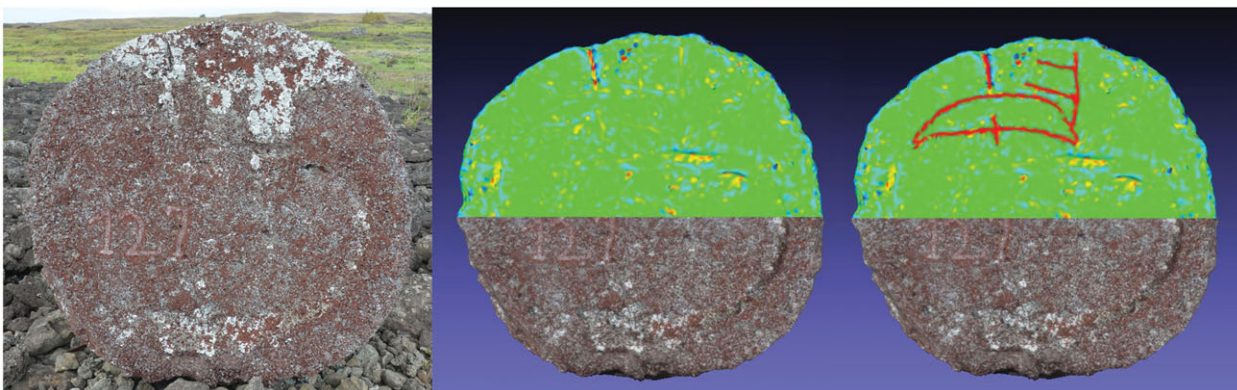


FIGURE 7. Photograph of the base of *pukao* 57 at Hekii (left). The APSS colorize curvature filter at scale 1.8 in MeshLab has been applied to the top half of the mesh (center). Note the two concave-down etchings that are faintly visible in the top half of the model in MeshLab (colored at right). These etchings and others like them are practically invisible to the naked eye.

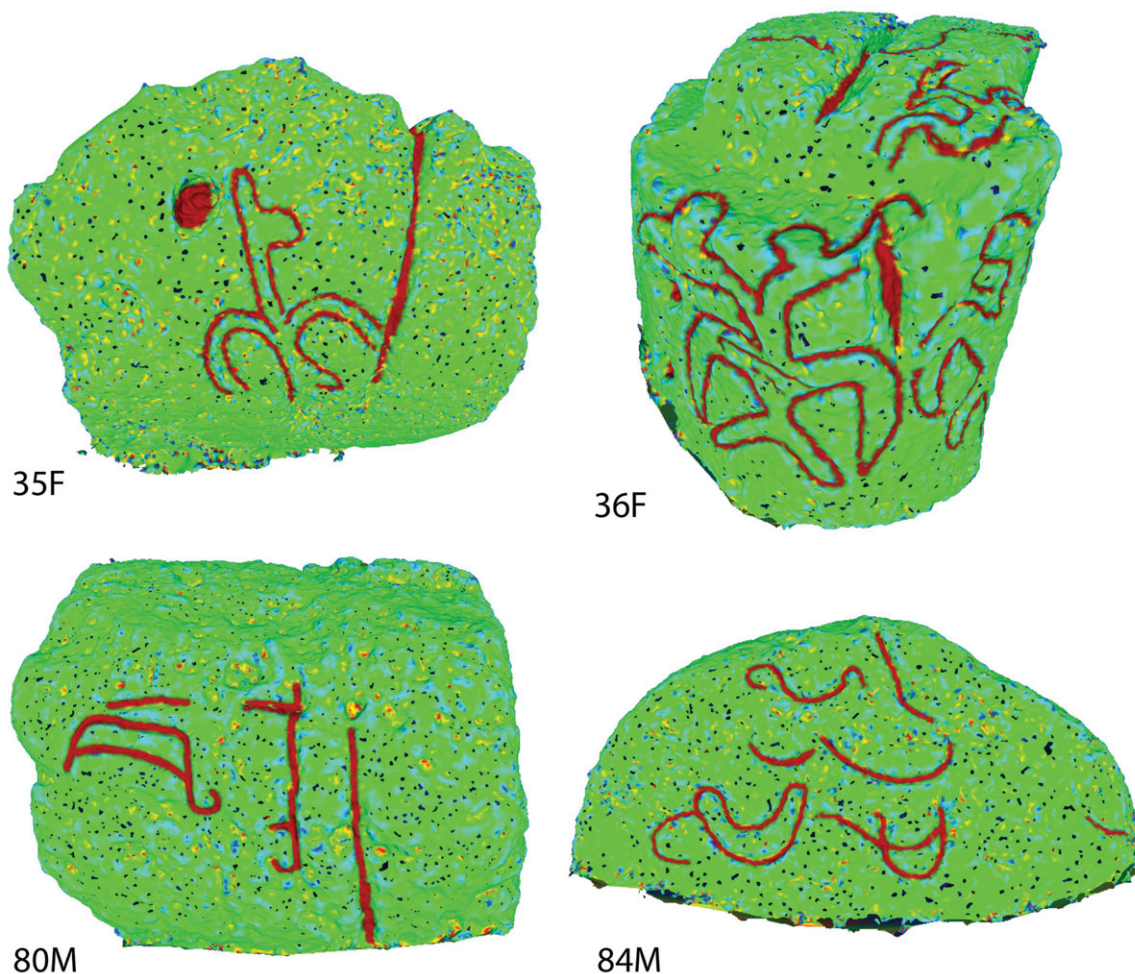


FIGURE 8. Various scoria bodies from Akahanga (F) and Puna Pau (M, see [Figure 5](#)) with closed curved form petroglyphs that have been marked in MeshLab using the z-painting tool. Van Tilburg and Lee (1987:143) refer to the forms from Akahanga as “birdman symbols,” but Lee (1992:20) refers to the outline in *pukao* 36 as a two-headed frigate bird.

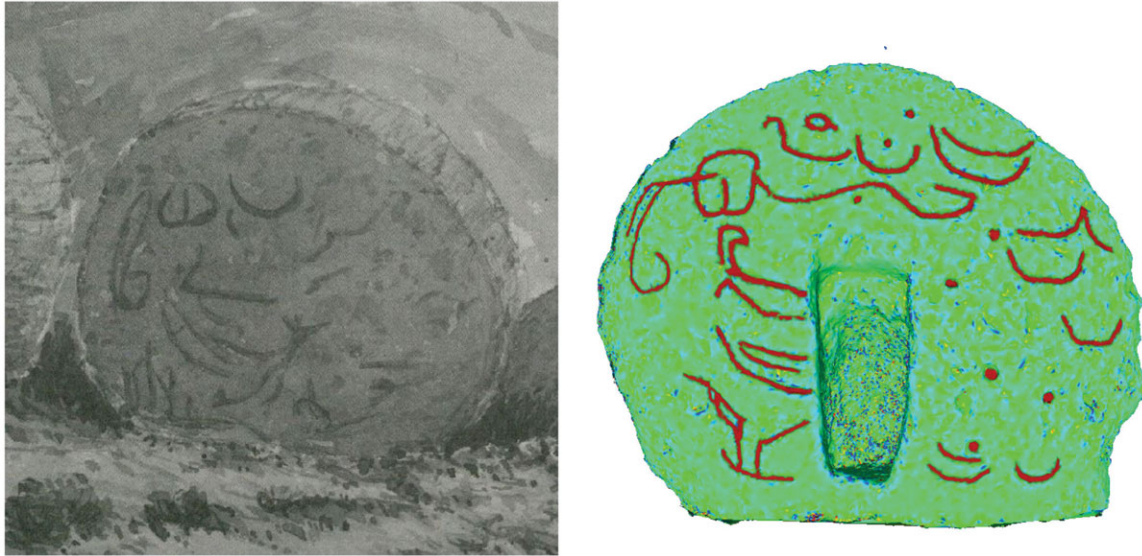


FIGURE 9. A watercolor from Linton Palmer's 1868 visit to the island (left, courtesy of the Royal Geographical Society, London) showing petroglyphs on a Puna Pau scoria body. The petroglyphs on this scoria body match those that we outlined on *pukao* 77 at Puna Pau. Note that the notch in this scoria body was carved sometime between 1868 and the present recording. Of the Puna Pau scoria bodies recorded through SfM mapping, 92% include petroglyphs. Jaussen interprets the abundant petroglyphs in Puna Pau as the "proprietary marks (*rona*) of the owners," but their age is unclear (Métraux 1971:303).

During this step, the computer identifies points shared between photos and computes camera parameters from each photo, which includes relative position, focal length, and skew. The output is a sparse point cloud that displays the points shared by multiple photos. This step typically took between 3 and 13 hours on a standard laptop computer, and was dependent on the number of images being processed. Once aligned, the photographs were then assessed for alignment quality. Low-quality values are a consequence of low coverage or poor focus. We removed from further processing all images that had camera positions with focus-quality values lower than 0.5. In situations with significant photographic overlap, we disabled cameras that had quality values lower than 0.7.

The third step of processing involved increasing the density of point clouds (Figures 3–4). During this step, the computer calculates additional depth information from each aligned photo and displays this information as points. We used aggressive filtering to remove outlying points while generating dense point clouds. The point cloud processing typically took between three and seven hours for each *pukao*.

The fourth processing step involves generating a surface representation of the object in the images. This surface representation takes the point cloud that was created in the previous step and connects the closest points into a network of polygons. We meshed the *pukao* as arbitrary surfaces using 1/15 of the points in the dense point cloud. Using more of the dense point cloud (1/5) produces more detailed meshes, but this approach frequently makes models difficult to view in external software. Using less of the dense point cloud (1/45) is less computationally expensive, but it limits the detail in the model. This step typically took about one hour. We then created a texture for the meshed

surface by wrapping portions of the original images over the model using the mosaic texture-blending mode. This algorithm determines coarse spatial resolution textures by using weighted averages of textures from multiple photos. Meanwhile, the algorithm uses information from a single photo that is nearly normal to a given model surface to map texture in a higher spatial resolution. Finally, we manually isolated the *pukao* from surrounding features in the modeled environment by eliminating unwanted mesh surfaces (e.g., cloud and ground surfaces) through masking and clipping. Figure 5 includes images of all completed *pukao* models.

The final model has an internally consistent scale that may be georeferenced through ground control points (GCPs) collected in the field. This internal scale simply means that the model is proportional but lacks absolute size information. Often, however, one is interested in extracting direct metric measurements from models. This step can be achieved by applying a scale to the model using a known reference distance that is embedded in the model. Given that *pukao* morphology and not the relative positions of *pukao* is of interest, we used the scale bars visible in our photographs to scale the measurements that we derived from the digital models.

Analysis

The product of SfM includes a texture layer that represents an approximation of the surface color and detail. This texture can be useful for documenting the surface condition, but it can also obscure topographic detail. In our analysis of *pukao*, we also simplified our models to isolate surface details. Using the open-source mesh processing tool MeshLab (Cignoni et al. 2008), we achieved this simplification by eliminating the texture and

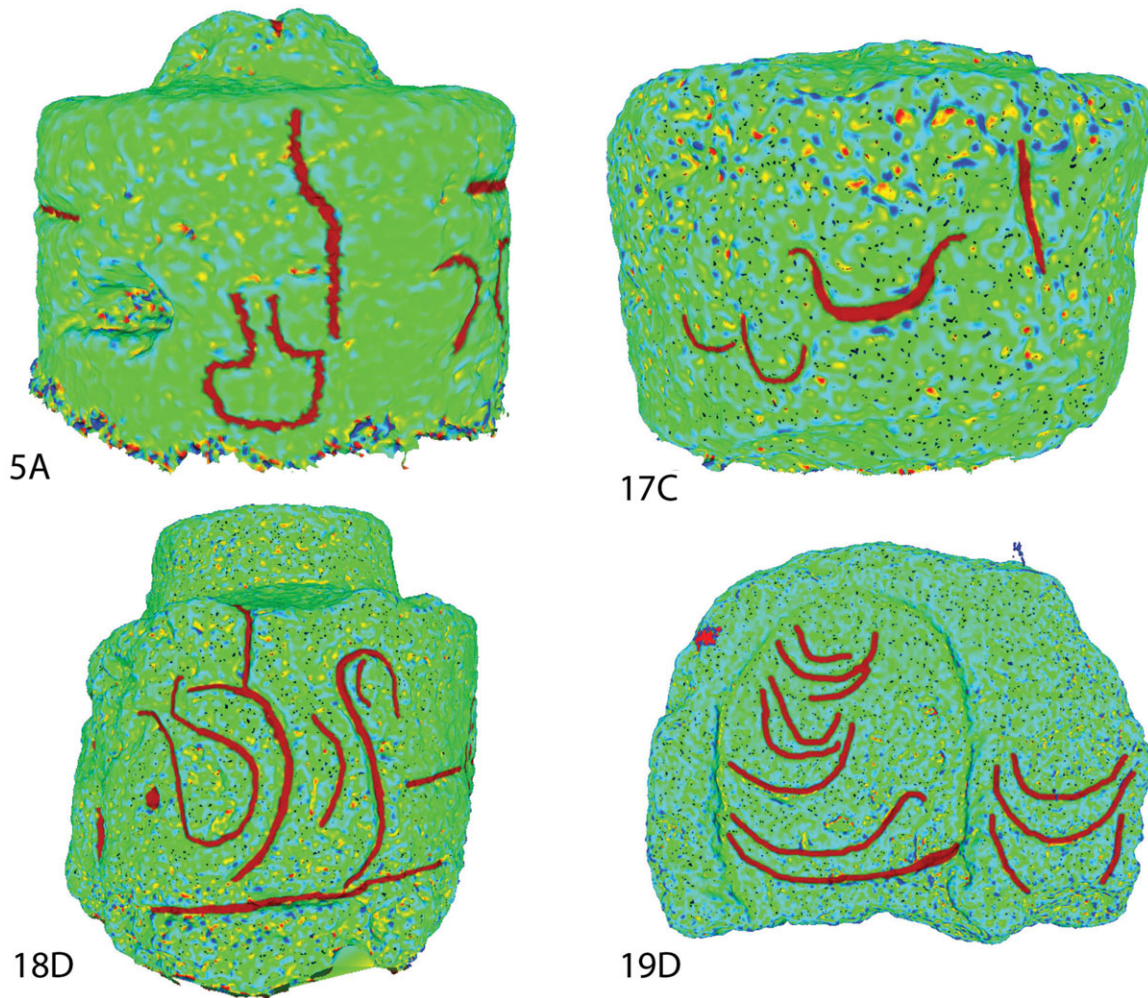


FIGURE 10. Various scoria bodies from Vinapu (A), Tarakiu (C), and Vaihu (D, see Figure 5) with isolated curved line petroglyphs that have been marked in MeshLab using the z-painting tool. Lee (1992:122,126) writes that “The majority of designs are simple canoe shapes” and speculates that their widespread distribution may be because they “marked a victory or conquest over another section of the island.” However, note the extensive variability in the form of curved line petroglyphs among those shown above.

color of the model and coloring the model using the APSS colorize curvature filter (Figure 6). The APSS colorize curvature filter assigns colors to the vertices of the mesh based on the degree of curvature of the underlying surface. The effect enhances subtle and narrow etchings in rock art (Vilas-Estevez et al. 2016) and highlights many details in the *pukao* surface. Modifying the scale of this filter acts to highlight petroglyphs with different etched line thicknesses. We also marked etchings and indentations in the *pukao* by using the “z-painting tool,” which colors the surface of a mesh. Finally, we used the “PickPoints tools” in MeshLab to add numbered labels to each distinct cluster of markings.

We used the approach described here to study 50 *pukao* models and 13 red scoria bodies from Puna Pau (Supplemental Figures 1–6; Supplemental Videos 1–2). These models (1) record surface details that are not visible to the naked eye, (2) record

details over complex surfaces, and (3) compare favorably with past sketches and paintings of *pukao* surface details.

While the coarse texture of the uniformly red scoria aids in the creation of *pukao* models through SfM mapping, the texture also complicates the detection of shallow surface details with the naked eye. Natural lighting, particularly at dawn and dusk, aids visual identification of surface details in the field. However, even under optimal natural lighting, the subtle nature of the features mixed with varied surface color and texture makes it exceptionally challenging to identify *pukao* details. Two advantages of SfM models are that they preserve surface details and that we can manipulate models to eliminate features that obscure details and to thus highlight subtle surficial variability (Figure 7). In this way, SfM greatly contributes to the recognition and recording of many previously unrecorded petroglyphs on Rapa Nui. From our studies, we now know that 27 of the 50 (54%) coastal *pukao* and 12

of the 13 (92%) large scoria bodies at Puna Pau are adorned with petroglyphs.

Just as Fritz and colleagues (2016) use SfM to map complex cave surfaces, SfM reveals some of the details on complex surfaces of *pukao*. Some of the *pukao* petroglyphs, for example, consist of closed curved forms (Figure 8). These forms (see Figure 8) wrap around the sides and even top of the *pukao*, which makes documentation by sketching a difficult process that is prone to distortion. Additionally, *pukao* fragment 35F in Figure 8 would be difficult to sketch due to limited physical access. SfM mapping of this surface, however, provides a noninvasive approach that captures detailed information of this curved surface detail.

Previous researchers have noted surface details on *pukao*, and the results of SfM mapping compare well with these past recordings. Linton Palmer (1870:176) was the first visitor to Rapa Nui to report that fallen *pukao* were “all more or less marked by rude carvings of ships, birds, etc.” Van Tilburg and Lee (1987:142) have since sketched a variety of the petroglyphs on *pukao* and other scoria bodies from Puna Pau and five coastal *ahu*. Figure 9 compares a watercolor by Palmer with the SfM model for this scoria body and demonstrates the similarities and subtle differences in these final products. Our SfM models provide more surface detail and morphological information than do line drawings, and we have achieved greater coverage than previous sketching work.

Given that we were able to systematically document the surface variability on every accessible *pukao* on Rapa Nui, our study documents the variability that exists for *pukao* petroglyphs. We can see, in particular, quite a few isolated curved lines that have never been fully documented. Heyerdahl and Ferdon (1961:237) mention the presence of these kinds of markings on fallen *pukao* and describe them as “incised crescent-shaped boats.” Such a qualitative label masks their diversity, which includes a range of different inflection points and curvature tightnesses. Similarly, Van Tilburg and Lee (1987:143) document *pukao* located at Puna Pau and five coastal *ahu*, and they emphasize the “high degree of conformity between and among the designs at all six sites.” From this pattern, Lee (1992:126) speculates that the widespread “canoe symbol marked a victory or conquest over another section of the island,” seeming to fit narratives for a violent precontact past on Rapa Nui (e.g., Diamond 2005; Flenley and Bahn 2003). Because our study allows us to create more detailed and comprehensive documentation of *pukao*, we can see that, while every scoria body SfM model with petroglyphs includes evidence of isolated curved lines, the curvature, number of inflection points, and associations of these isolated curved lines are diverse (Figure 10). This diversity of forms cannot represent a standard territory marker and removes *pukao* petroglyphs from a narrative that involves widespread territorial violence during Rapa Nui’s precontact past. Thus, details from SfM models, in contrast to those produced by hand recording, greatly expand the dataset from which we generate our knowledge about the past of the island.

CONCLUSION

SfM mapping of artifacts fulfills the goals of both conservation and analysis with its detailed coverage and ease of reduc-

ing detail in meaningful ways. This technique is efficient, cost-effective, and minimally invasive. As illustrated in the discussion regarding *pukao*, SfM mapping also produces reliable results that record detail over complex surfaces and reveal subtle surface details that may be practically invisible to the naked eye. The great diversity of petroglyphs suggests that it is unlikely that these etchings represent territorial markers associated with warfare. The details in the *pukao* SfM models also provide the empirical basis for an understanding of past *pukao* transport. Further research can enhance the existing SfM models by mapping *pukao* surfaces that are currently concealed. Additionally, by remapping *pukao* in the future and comparing future models to those produced in 2014, it will be possible to track changes in lichen growth and *pukao* form and thus identify conservation priorities. Given its various merits, SfM mapping should become a standard recording technique.

Acknowledgments

This work was funded in part by NSF Grant #1005258. We also thank the 2014 NSF-REU Geospatial Research and Mapping group for their support during our field season on Rapa Nui. We are also grateful for the financial support to Hixon for this research from the University of Oregon Center for Teaching and Learning Undergraduate Research Fellowship. Our work was sponsored by the Padre Sebastian Englert Anthropological Museum and conducted in collaboration with CONAF, the Consejo de Monumentos, the office of the Provincial Governor of Easter Island, and the Consejo de Ancianos.

Data Availability Statement

MeshLab and PhotoScan files associated with all *pukao* models are available for download at Binghamton University’s open repository (http://orb.binghamton.edu/anthropology_fac/31/). *Pukao* models may be viewed online on Sketchfab (<https://sketchfab.com/clipo/models>). Photographs are available upon request.

Supplemental Materials

For supplemental material accompanying this paper, visit <https://doi.10.1017/aap.2017.28>.

Supplemental Figure 1. Renderings of *pukao* from Vinapu and Hanga Poukura. Each row shows the sides of individual *pukao* that bear figures and carvings.

Supplemental Figure 2. Renderings of *pukao* from Hanga Poukura, Tarakiu, Vaihu, and Ura Uranga te Mahina. Each row shows the sides of individual *pukao* that bear figures and carvings.

Supplemental Figure 3. Renderings of *pukao* from Akahanga, Tu’u Tahi, One Makihi, and Tongariki. Each row shows the sides of individual *pukao* that bear figures and carvings.

Supplemental Figure 4. Renderings of *pukao* from Tongariki and Hekii. Each row shows the sides of individual *pukao* that bear figures and carvings.

Supplemental Figure 5. Renderings of *pukao* from Hekii, Anakena, Te Pito Kura, and Puna Pau. Each row shows the sides of individual *pukao* that bear figures and carvings.

Supplemental Figure 6. Renderings of *pukao* from Puna Pau. Each row shows the sides of individual *pukao* that bear figures and carvings.

Supplemental Video 1. Three-dimensional rendering of pukao 18D from Vaihu.
 Supplemental Video 2. Three-dimensional rendering of pukao 49I from Tongariki.

REFERENCES CITED

- Agisoft, LLC
 2011 Agisoft PhotoScan User Manual: Standard Edition. Version 0.8.
- Alexander, Craig, Axel Pinz, and Christian Reinbacher
 2015 Multi-Scale 3D Rock-Art Recording. *Digital Applications in Archaeology and Cultural Heritage* 2:181–195.
- Arles, A., P. Clerc, G. Sarah, F. Téreygeol, G. Bonnamour, J. Heckes, and A. Klein
 2013 3D Reconstruction and Modeling of Subterranean Landscapes in Collaborative Mining Archaeology Projects: Techniques Applications and Experiences. *Proceedings of the XXIV International CIPA Symposium*:61–66.
- Atkinson, K. B.
 1968 The Recording of Some Prehistoric Carvings at Stonehenge. *The Photogrammetric Record* 6(31):24–31.
- Balletti, C., C. Beltrame, E. Costa, F. Guerra, and P. Vernier
 2015 Photogrammetry in Maritime and Underwater Archaeology: Two Marble Wrecks from Sicily. *Proceedings of the SPIE Optical Metrology* 9527:95270M-1–95270M-12.
- Balletti, C., F. Guerra, V. Scocca and C. Gottardi
 2015 3D Integrated Methodologies for the Documentation and the Virtual Reconstruction of an Archaeological Site. *The International Archives of Photogrammetry, Remote Sensing and Spatial Information Sciences* 40(5):215.
- Barsanti, S. Gonizzi, Fabio Remondino, and Domenico Visintini
 2012 Photogrammetry and Laser Scanning for Archaeological Site 3D Modeling—Some Critical Issues. *Proceedings of the Proc. of the 2nd Workshop on “The New Technologies for Aquileia,” V. Roberto, L. Fozzati.*
- Bertilsson, Ulf
 2015 Examples of Application of Modern Digital Techniques and Methods Structure for Motion (SfM) and Multiview Stereo (MVS) for Three Dimensional Documentation of Rock Carvings in Tanum Creating New Opportunities for Interpretation and Dating. *Proceedings of the Prospects for Prehistoric Rock Art Research. XXVI Valcamonica Symposium*:57–62.
- Betts, Matthew W., Herbert D. G. Maschner, Corey D. Schou, Robert Schlader, Jonathan Holmes, Nicholas Clement, and Michael Smuin
 2011 Virtual Zooarchaeology: Building a Web-Based Reference Collection of Northern Vertebrates for Archaeofaunal Research and Education. *Journal of Archaeological Science* 38(4):755. e751–755, e759.
- Bevan, Andrew, Xiuzhen Li, Marcos Martín-Torres, Susan Green, Yin Xia, Kun Zhao, Zhen Zhao, Shengtao Ma, Wei Cao, and Thilo Rehren
 2014 Computer Vision, Archaeological Classification and China’s Terracotta Warriors. *Journal of Archaeological Science* 49:249–254.
- Bojakowski, Piotr, Katie Custer Bojakowski, and Perry Naughton
 2015 A Comparison between Structure from Motion and Direct Survey Methodologies on the Warwick. *Journal of Maritime Archaeology* 10(2):159–180.
- Bonacchi, Chiara, Andrew Bevan, Daniel Pett, Adi Keinan-Schoonbaert, Rachael Sparks, Jennifer Wexler, and Neil Wilkin
 2014 Crowd-Sourced Archaeological Research: The MicroPasts Project. *Archaeology International* 17:61–68, DOI: <https://doi.org/10.5334/ai.1705>
- Brutto, M. Lo, and Paola Meli
 2012 Computer Vision Tools for 3D Modelling in Archaeology. *International Journal of Heritage in the Digital Era* 1(1 suppl): 1–6.
- Caninas, Joao Carlos, Hugo Pires, Francisco Henriques, and Mario Chambino
 2016 Rock Art in Portugal’s Border Area. *Rock Art Research: The Journal of the Australian Rock Art Research Association (AURA)* 33:79.
- Carrero-Pazos, Miguel, Alia Vázquez-Martínez, and Benito Vilas-Estévez
 2016 AsTrend: Towards a New Method for the Study of Ancient Carvings. *Journal of Archaeological Science: Reports* 9:105–119.
- Chandler, Jim H., Paul Bryan, and John G. Fryer
 2007 The Development and Application of a Simple Methodology for Recording Rock Art Using Consumer-Grade Digital Cameras. *The Photogrammetric Record* 22:10–21.
- Charola, A. Elena
 1994 *Easter Island: The Heritage and Its Conservation*. World Monuments Fund. Electronic document, <https://www.wmf.org/publication/easter-island-heritage-and-its-conservation>, accessed July 30, 2017.
 1997 *Death of A Moai: Easter Island Statues: Their Nature, Deterioration and Conservation*. Bearsville Press and Cloud Mountain Press, Los Osas, California.
- Cignoni, Paolo, Marco Callieri, Massimiliano Corsini, Matteo Dellepiane, Fabio Ganovelli, and Guido Ranzuglia
 2008 MeshLab: An Open-Source Mesh Processing Tool. *Proceedings of the Eurographics Italian Chapter Conference 2008*:129–136.
- Clarkson, Chris, and Peter Hiscock
 2011 Estimating Original Flake Mass from 3D Scans of Platform Area. *Journal of Archaeological Science* 38(5):1062–1068.
- Clini, P., N. Frapiccini, M. Mengoni, R. Nespeca, and L. Ruggeri
 2016 SFM Technique and Focus Stacking for Digital Documentation of Archaeological Artifacts. *ISPRS-International Archives of the Photogrammetry, Remote Sensing and Spatial Information Sciences*:229–236.
- Corney, Bolton Glanvill, Felipe González de Haedo, and Jacob Roggeveen
 1908 *The Voyage of Captain Don Felipe González: In the Ship of the Line San Lorenzo, with the Frigate Santa Rosalia in Company, to Easter Island in 1770–1. Preceded by an Extract from Mynheer Jacob Roggeveen’s Official Log of His Discovery of and Visit to Easter Island in 1722*. Printed for the Hakluyt Society.
- Cosmas, John, Take Itegaki, Damian Green, Edward Grabczewski, Fred Weimer, Luc Van Gool, Alexy Zalesny, Desi Vanrintel, Franz Leberl, and Markus Grabner
 2001 3D MURALE: A Multimedia System for Archaeology. *Proceedings of the Proceedings of the 2001 Conference on Virtual Reality, Archeology, and Cultural Heritage*:297–306.
- Curry, Stacy, and Doug Galloway
 2016 Three-Dimensional Remote Sensing at House in the Horseshoe State Historic Site (31mr20), Moore County, North Carolina. *North Carolina Archaeology* 65:100–107.
- Dann, Elizabeth, and Kevin Jones
 1984 The Survey and Recording of Rock Art Sites Using Terrestrial Photogrammetry. *Australian Archaeology* (19):48–55.
- De Reu, Jeroen, Wim De Clercq, Joris Sergeant, Jasper Deconynck, and Pieter Laloo
 2013 Orthophoto Mapping and Digital Surface Modeling for Archaeological Excavations an Image-Based 3D Modeling Approach. *Proceedings of the Digital Heritage International Congress (DigitalHeritage), 2013* 1:205–208.
- De Reu, Jeroen, Philippe De Smedt, Davy Herremans, Marc Van Meirvenne, Pieter Laloo, and Wim De Clercq
 2014 On Introducing an Image-Based 3D Reconstruction Method in Archaeological Excavation Practice. *Journal of Archaeological Science* 41:251–262.
- De Reu, Jeroen, Gertjan Plets, Geert Verhoeven, Philippe De Smedt, Machteld Bats, Bart Cherretté, Wouter De Maeyer, Jasper Deconynck, Davy Herremans, and Pieter Laloo
 2013 Towards a Three-Dimensional Cost-Effective Registration of the Archaeological Heritage. *Journal of Archaeological Science* 40(2):1108–1121.

- Diamond, Jared
2005 *Collapse: How Societies Choose to Fail or Succeed*. Viking Penguin. New York.
- Doneus, Michael, Geert Verhoeven, Martin Fera, Ch Briese, Matthias Kucera, and Wolfgang Neubauer
2011 From Deposit to Point Cloud—A Study of Low-Cost Computer Vision Approaches for the Straightforward Documentation of Archaeological Excavations. *Geoinformatics FCE CTU* 6:81–88.
- Dunn, Stuart, and Kirk Woolford
2012 Reconfiguring Experimental Archaeology Using 3D Reconstruction. *EVA London 2012 Electronic Visualisation and the Arts*:172–178.
- Dunn, Stuart, Kirk Woolford, Sally-Jane Norman, Martin White, and Leon Barker
2012 Motion in Place: A Case Study of Archaeological Reconstruction Using Motion Capture. *Proceedings of the Revive the Past: Proceedings of the 39th Conference in Computer Applications and Quantitative Methods in Archaeology*:98–106.
- Edwards, Edmundo, Raul Marchetti, Leopoldo Dominichetti, and Oscar González-Ferrán
1996 When the Earth Trembled, the Statues Fell. *Rapa Nui Journal* 10:1–16.
- Fischer, Steven R.
2005 *Island at the End of the World: The Turbulent History of Easter Island*. Reaktion Books, London.
- Flenley, John, and Paul Bahn
2003 *The Enigmas of Easter Island*. Oxford University Press, Oxford.
- Forte, Maurizio, Nicolo Dell’Unto, Justine Issavi, Lionel Onsurez, and Nicola Lercari
2012 3D Archaeology at Çatalhöyük. *International Journal of Heritage in the Digital Era* 1(3):351–378.
- Fritz, Carole, Mark D. Willis, and Gilles Tosello
2016 Reconstructing Paleolithic Cave Art: The Example of Marsoulas Cave (France). *Journal of Archaeological Science: Reports*. DOI: [10.1016/j.jasrep.2016.05.012](https://doi.org/10.1016/j.jasrep.2016.05.012), accessed July 30, 2017.
- Fussell, Angela
1982 Terrestrial Photogrammetry in Archaeology. *World Archaeology* 14(2):157–172.
- Galeazzi, Fabrizio
2016 Towards the Definition of Best 3D Practices in Archaeology: Assessing 3D Documentation Techniques for Intra-Site Data Recording. *Journal of Cultural Heritage* 17:159–169.
- Galeazzi, Fabrizio, Holley Moyes, and Mark Aldenderfer
2014 Defining Best 3D Practices in Archaeology Comparing Laser Scanning and Dense Stereo Matching Techniques for 3D Intrasite Data Recording. *Advances in Archaeological Practice* 2(4):353–365.
- Goldhahn, Joakim, and Christopher Sevara
2011 Image-Based Modeling of the Present Past: Building 3D Models of Archaeological Environments from Digital Photographs. *Proceedings of the DMACH 2011: Digital Media and its Applications in Cultural Heritage, 13–15 March, 2011 Amman, Jordan*:251–266.
- Green, Susie, Andrew Bevan, and Michael Shapland
2014 A Comparative Assessment of Structure from Motion Methods for Archaeological Research. *Journal of Archaeological Science* 46: 173–181.
- Hameeuw, Hendrik, Anne Devillers, and Wouter Claes
2016 Relighting Egyptian Rock Art: Rapid, Accurate HD Imaging of Prehistoric Petroglyphs. *Proceedings of the Proceedings “Young Researchers Overseas’ Day” (16.12. 2014)*:1–11.
- Hamilton, Sue
2007 Rapa Nui Landscapes of Construction. *Archaeology International* 10: 49–53.
2013 Rapa Nui (Easter Island)’s Stone Worlds. *Archaeology International* 16: 96–109. DOI: [http://doi.org/10.5334/ai.1613](https://doi.org/10.5334/ai.1613)
- Hamilton, Sue, Mike Seager Thomas, and Ruth Whitehouse
2011 Say It with Stone: Constructing with Stones on Easter Island. *World Archaeology* 43(2):167–190.
- Haukaas, Colleen, and Lisa M. Hodgetts
2016 The Untapped Potential of Low-Cost Photogrammetry in Community-Based Archaeology: A Case Study from Banks Island, Arctic Canada. *Journal of Community Archaeology & Heritage* 3(1):40–56.
- Henderson, Jon, Oscar Pizarro, Matthew Johnson-Roberson, and Ian Mahon
2013 Mapping Submerged Archaeological Sites Using Stereo-Vision Photogrammetry. *International Journal of Nautical Archaeology* 42(2):243–256.
- Heyerdahl, Thor, and Edwin N. Ferdon
1961 *Archaeology of Easter Island*. Allen and Unwin, London
- Hochstetter, Francisco Torres, Sergio Rapu Haa, Carl P. Lipo, and Terry L. Hunt
2011 A Public Database of Archaeological Resources on Easter Island (Rapa Nui) Using Google Earth. *Latin American Antiquity*: 385–397.
- Höll, Thomas, Gert Holler, and Axel Pinz
2014 A Novel High Accuracy 3D Scanning Device for Rock-Art Sites. *The International Archives of Photogrammetry, Remote Sensing and Spatial Information Sciences* 40(5):285.
- Howland, Matthew D., Falko Kuester, and Thomas E. Levy
2014a Photogrammetry in the Field: Documenting, Recording, and Presenting Archaeology. *Mediterranean Archaeology and Archaeometry* 14(4): 187–191.
2014b Structure from Motion: Twenty-First Century Field Recording with 3D Technology. *Near Eastern Archaeology (NEA)* 77(3):187–191.
- Howland, Matthew D., Brady Liss, Mohammad Najjar, and Thomas E. Levy
2015 GIS-Based Mapping of Archaeological Sites with Low-Altitude Aerial Photography and Structure from Motion: A Case Study from Southern Jordan. *Proceedings of the Digital Heritage, 2015* 1:91–94.
- Hunt, Terry L., and Carl P. Lipo
2006 Late Colonization of Easter Island. *Science* 311(5767):1603–1606.
2011 *The Statues That Walked: Unraveling the Mystery of Easter Island*. Simon and Schuster, New York.
- Jamhawi, Monther, Yahya Alshwabkeh, Ahmed Freewan, and Rami Al-Gharaibeh
2016 Combined Laser Scanner and Dense Stereo Matching Techniques for 3D Modelling of Heritage Sites: Dar Es-Saraya Museum. *Mediterranean Archaeology and Archaeometry* 16(3):185–192.
- Janik, Liliانا, Corinne Roughley, and Katarzyna Szcz
2007 Skiing on the Rocks: The Experiential Art of Fisher-Gatherer-Hunters in Prehistoric Northern Russia. *Cambridge Archaeological Journal* 17(03):297–310.
- Johansson, Sven-Olav, and Jan Magnusson
2004 Developing New Techniques for 3D Documentation of Rock Art. *Proceedings of the The Valcamonica Symposiums. 2001 and 2002*: 125–133.
- Johnson-Roberson, Matthew, Mitch Bryson, Ariell Friedman, Oscar Pizarro, Giancarlo Troni, Paul Ozog, and Jon C. Henderson
2016 High-Resolution Underwater Robotic Vision-Based Mapping and Three-Dimensional Reconstruction for Archaeology. *Journal of Field Robotics*. DOI: [10.1002/rob.21658](https://doi.org/10.1002/rob.21658), accessed July 30, 2017.
- Kahn, Robert L.
1968 *Georg Forsters Werke Samtliche Schriften, Tagebücher, Briefe. A Voyage Round the World*. Akademie-Verlag, Berlin.
- Keinan, Adi
2014 MicroPasts. An Experiment in Crowdsourcing and Crowdfunding Archaeology. *British Archaeology* 139:50–55.
- Kersten, Thomas P., and Maren Lindstaedt
2012 Image-Based Low-Cost Systems for Automatic 3D Recording and Modelling of Archaeological Finds and Objects. *Proceedings of the Euro-Mediterranean Conference*:1–10.
- Koenig, Charles W., Mark D. Willis, and Stephen L. Black
2017 Beyond the Square Hole: Application of Structure from Motion Photogrammetry to Archaeological Excavation. *Advances in Archaeological Practice* 5(1):54–70.
- Koutsoudis, Anestis, and Christodoulos Chamzas
2011 3D Pottery Shape Matching Using Depth Map Images. *Journal of Cultural Heritage* 12(2):128–133.

- Koutsoudis, Anestis, Blaž Vidmar, and Fotis Arnaoutoglou
 2013 Performance Evaluation of a Multi-Image 3D Reconstruction Software on a Low-Feature Artefact. *Journal of Archaeological Science* 40(12):4450–4456.
- Lee, Georgia
 1992 *Rock Art of Easter Island: Symbols of Power, Prayers to the Gods* 17. Cotsen Institute of Archaeology, University of California, Los Angeles.
- Lerma, José L., Santiago Navarro, Ana E. Seguí, and Miriam Cabrelles
 2014 Range-Based versus Automated Markerless Image-Based Techniques for Rock Art Documentation. *The Photogrammetric Record* 29(145):30–48.
- Lerma, José Luis, and Colin Muir
 2014 Evaluating the 3D Documentation of an Early Christian Upright Stone with Carvings from Scotland with Multiples Images. *Journal of Archaeological Science* 46:311–318.
- Levy, Thomas E., Matthew L. Vincent, Matthew Howland, Falko Kuester, and Neil G. Smith
 2014 The Art of Implementing SFM for Reconstruction of Archaeological Sites in Greece: Preliminary Applications of Cyber-Archaeological Recording at Corinth. *Mediterranean Archaeology and Archaeometry* 14(4): 125–133.
- López-Romero, Elías
 2014 “Out of the Box”: Exploring the 3D Modelling Potential of Ancient Image Archives. *Virtual Archaeology Review*. 5(10):107–116.
- López-Romero, Elías, Patricia Mañana-Borrazás, M-Y Daire, and Alejandro Güimil-Fariña
 2014 The eSCOPES Project: Preservation by Record and Monitoring at-risk Coastal Archaeological Sites on the European Atlantic Façade. *Antiquity* 88(339).
- Lowe, David G
 2004 Distinctive Image Features from Scale-Invariant Keypoints. *International Journal of Computer Vision* 60(2):91–110.
- McCarthy, John
 2014 Multi-Image Photogrammetry as a practical Tool for Cultural Heritage Survey and Community Engagement. *Journal of Archaeological Science* 43:175–185.
- McCarthy, John, and Jonathan Benjamin
 2014 Multi-Image Photogrammetry for Underwater Archaeological Site Recording: An Accessible, Diver-Based Approach. *Journal of Maritime Archaeology* 9(1):95–114.
- Magnani, Matthew, and Whittaker Schroder
 2015 New Approaches to Modeling the Volume of Earthen Archaeological Features: A Case-Study from the Hopewell Culture Mounds. *Journal of Archaeological Science* 64:12–21.
- Mancini, Francesco, Marco Dubbini, Mario Gattelli, Francesco Stecchi, Stefano Fabbri, and Giovanni Gabbianelli
 2013 Using Unmanned Aerial Vehicles (UAV) for High-Resolution Reconstruction of Topography: The Structure from Motion Approach on Coastal Environments. *Remote Sensing* 5(12):6880–6898.
- Means, Bernard K.
 2015 Promoting a More Interactive Public Archaeology Archaeological Visualization and Reflexivity through Virtual Artifact Curation. *Advances in Archaeological Practice* 3(3):235–248.
- Means, Bernard K., Ashley McCuiston, and Courtney Bowles
 2013 Virtual Artifact Curation of the Historical Past and the NextEngine Desktop 3D Scanner. *Technical Briefs in Historical Archaeology* 6:1–12.
- Meijer, Ellen
 2015 Structure from Motion as Documentation Technique for Rock Art. *Adoranten*:66.
- Meline, Arnaud, Jean Triboulet, and Bruno Jouvencel
 2012 Comparative Study of Two 3D Reconstruction Methods for Underwater Archaeology. *Proceedings of the Intelligent Robots and Systems (IROS), 2012 IEEE/RSJ International Conference on Intelligent Robots and Systems*:740–745.
- Mertes, J., T. Thomsen, and J. Gulley
 2014 Evaluation of Structure from Motion Software to Create 3D Models of Late Nineteenth Century Great Lakes Shipwrecks Using Archived Diver-Acquired Video Surveys. *Journal of Maritime Archaeology* 9(2):173–189.
- Métraux, Alfred
 1971 *Ethnology of Easter Island*. Bishop Museum Press, Honolulu, Hawaii.
- Monterroso-Checa, Antonio, and Massimo Gasparini
 2016 Aerial Archaeology and Photogrammetric Surveys along the Roman Way from Corduba to Emerita. Digitalizing the Ager Cordubensis and the Ager Mellariensis. *SCIRES-IT-SCientific REsearch and Information Technology* 6(2):175–188.
- Morales, Juan I., Carlos Lorenzo, and Josep M. Vergès
 2015 Measuring Retouch Intensity in Lithic Tools: A New Proposal Using 3D Scan Data. *Journal of Archaeological Method and Theory* 22(2):543–558.
- Niven, Laura, Teresa E. Steele, Hannes Finke, Tim Gernat, and Jean-Jacques Hublin
 2009 Virtual Skeletons: Using a Structured Light Scanner to Create a 3D Faunal Comparative Collection. *Journal of Archaeological Science* 36(9):2018–2023.
- Ogleby, Cliff, and Leo J. Rivett
 1985 *Handbook of Heritage Photogrammetry* 4. Australian Government Publishing Service, Canberra.
- Palmer, John Linton
 1869 Observations on the Inhabitants and the Antiquities of Easter Island. *The Journal of the Ethnological Society of London (1869–1870)* 1(4):371–377.
- 1870 A Visit to Easter Island, or Rapa Nui, in 1868. *The Journal of the Royal Geographical Society of London* 40:167–181.
- Papadaki, A. I., P. Agrafiotis, A. Georgopoulos, and S. Prignitz
 2015 Accurate 3D Scanning of Damaged Ancient Greek Inscriptions for Revealing Weathered Letters. *The International Archives of Photogrammetry, Remote Sensing and Spatial Information Sciences* 40(5):237.
- Plets, Gertjan, Wouter Gheyle, Geert Verhoeven, Jeroen De Reu, Jean Bourgeois, Jeroen Verhegge, and Birger Stichelbaut
 2012 Three-Dimensional Recording of Archaeological Remains in the Altai Mountains. *Antiquity* 86(333):884–897.
- Poier, Georg, Markus Seidl, Matthias Zeppelzauer, Christian Reinbacher, Martin Schaich, Giovanna Bellandi, Alberto Marretta, and Horst Bischof
 2016 PetroSurf3D-A High-Resolution 3D Dataset of Rock Art for Surface Segmentation. *arXiv preprint arXiv:1610.01944*.
- Pollefeys, Marc, Luc Van Gool, Maarten Vergauwen, Kurt Cornelis, Frank Verbiest, and Jan Tops
 2003a 3D Capture of Archaeology and Architecture with a Hand-Held Camera. *International Archives of Photogrammetry Remote Sensing and Spatial Information Sciences* 34(5/W12):262–267.
- 2003b 3D Recording for Archaeological Fieldwork. *IEEE Computer Graphics and Applications* 23(3):20–27.
- Ritsos, Panagiotis D., Andrew T. Wilson, Helen C. Miles, Lee F. Williams, Bernard Tiddeman, Frédéric Labrosse, Seren Griffiths, Ben Edwards, Katharina Möller, and Raimund Karl
 2014 Community-Driven Generation of 3D and Augmented Web Content for Archaeology. *Proceedings of the Proceedings of the Eurographics Workshop on Graphics and Cultural Heritage (GCH), Reinhard Klein and Pedro Santos (Eds.)*. Eurographics Association:25–28.
- Roosevelt, Christopher H., Peter Cobb, Emanuel Moss, Brandon R. Olson and Sinan Ünlüsoy
 2015 Excavation Is Destruction Digitization: Advances in Archaeological Practice. *Journal of Field Archaeology* 40(3):325–346.
- Routledge, Katherine
 1998 *The Mystery of Easter Island*. Adventures Unlimited, Kempton, Illinois.
- Routledge, Scoresby
 1917 Easter Island. *The Geographical Journal* 49(5):321–340.
- Ruiz-Tagle, Eduardo
 2005 *Easter Island: The First Three Expeditions*. Rapanui Press, Rapa Nui.
- Rüther, Heinz, Christoph Held, Roshan Bhurtha, Ralph Schroeder, and Stephen Wessels
 2012 From Point Cloud to Textured Model, the Zamani Laser Scanning Pipeline in Heritage Documentation. *South African Journal of Geomatics* 1(1):44–59.

- Schönberger, Johannes L., Friedrich Fraundorfer, and Jan Michael Frahm
2014 Structure-from-Motion for MAV Image Sequence Analysis with Photogrammetric Applications. *The International Archives of Photogrammetry, Remote Sensing and Spatial Information Sciences* 40(3):305.
- Seager Thomas, Mike
2014 Stone Use and Avoidance on Easter Island: Red Scoria from the Topknot Quarry at Puna Pau and Other Sources. *Archaeology in Oceania* 49(2):95–109.
- Sevara, Christopher
2013 Top Secret Topographies: Recovering Two And Three-Dimensional Archaeological Information from Historic Reconnaissance Datasets Using Image-Based Modelling Techniques. *International Journal of Heritage in the Digital Era* 2(3):395–418.
- Smith, Neil G., Luca Passone, Said Al-Said, Mohamed Al-Farhan, and Thomas E. Levy
2014 Drones in Archaeology: Integrated Data Capture, Processing, and Dissemination in the al-Ula Valley, Saudi Arabia. *Near Eastern Archaeology (NEA)* 77(3):176–181.
- Smith, Steve, Steve Cutchin, Alyn Rockwood, Adel Saad, Neil G. Smith, and Thomas E. Levy
2012 Demo Paper: Virtual and Immersive Experience Presentation of Cultural Heritage Sites. *Proceedings of the Virtual Systems and Multimedia (VSMM), 2012 18th International Conference on Virtual Systems and Multimedia*:645–648.
- Snively, Noah, Steven M. Seitz, and Richard Szeliski
2006 Photo Tourism: Exploring Photo Collections in 3D. *Proceedings of the ACM Transactions on Graphics (TOG)* 25:835–846.
- Snyder, David B., Paul Bahn, and John Flenley
1994 *Easter Island Earth Island*. Thames and Hudson, London.
- Stal, Cornelis, Alain De Wulf, Philippe De Maeyer, Rudi Goossens, and Timothy Nuttens
2012 Evaluation of the Accuracy of 3D Data Acquisition Techniques for the Documentation of Cultural Heritage. *Proceedings of the 3rd International EARSeL workshop on the Advances in Remote Sensing for Archaeology and Cultural Heritage Management*.
- Stanbury, Peter, and John Clegg
1990 *A Field Guide to Aboriginal Rock Engravings with Special Reference to Those around Sydney*. Sydney University Press, Sydney.
- Thanaphatarapornchai, Montri
2012 Close-Range Photogrammetry for 3D Archaeological Documentation: Digital Human Remains. *Proceedings of the Poster Presented at the 2nd Southeast Asian Bioarchaeology Congress, Khon Kaen, Thailand*: 26–28.
- Thomas, Hugh, and Melissa A. Kennedy
2016 A New Methodology for Accurate Digital Planning of Archaeological Sites without the Aid of Surveying Equipment. *Journal of Archaeological Science: Reports* 10:887–892.
- Tomášková, Silvia
2015 Digital Technologies in Context: Prehistoric Engravings in the Northern Cape, South Africa. *Digital Applications in Archaeology and Cultural Heritage* 2(2):222–232.
- Tscharf, Alexander, Markus Rimpler, Friedrich Fraundorfer, Gerhard Mayer, and Horst Bischof
2015 On the Use of UAVs in Mining and Archaeology-Geo-Accurate 3D Reconstructions Using Various Platforms and Terrestrial Views. *ISPRS Annals of the Photogrammetry, Remote Sensing and Spatial Information Sciences* 2(1):15.
- Van Tilburg, Jo Anne, and Georgia Lee
1987 Symbolic Stratigraphy: Rock Art and the Monolithic Statues of Easter Island. *World Archaeology* 19(2):133–149.
- Verhoeven, Geert
2011 Taking Computer Vision Aloft—Archaeological Three-Dimensional Reconstructions from Aerial Photographs with Photoscan. *Archaeological Prospection* 18(1):67–73.
- Verhoeven, Geert, Michael Doneus, Ch Briese, and Frank Vermeulen
2012 Mapping by Matching: A Computer Vision-Based Approach to Fast and Accurate Georeferencing of Archaeological Aerial Photographs. *Journal of Archaeological Science* 39(7):2060–2070.
- Verhoeven, Geert, Devi Taelman, and Frank Vermeulen
2012 Computer Vision-Based Orthophoto Mapping of Complex Archaeological Sites: The Ancient Quarry of Pitaranha (Portugal–Spain). *Archaeometry* 54(6):1114–1129.
- Vilas-Estevez, Benito, Alia Vázquez-Martínez, and Miguel Carrero-Pazos
2016 Going Further:(Re) Discovering Rock Art Carvings. *Handbook of Research on Emerging Technologies for Digital Preservation and Information Modeling*:175.
- Vincent, Matthew L, Tom DeFanti, Jurgen Schulze, Falko Kuester, and Thomas Levy
2013 Stereo Panorama Photography in Archaeology: Bringing the Past into the Present through CAVEcams and Immersive Virtual Environments. *Proceedings of the Digital Heritage International Congress (DigitalHeritage), 2013* 1:455–455.
- Wefers, Stefanie, Tobias Reich, Burkhard Tietz, and Frank Boochs
2016 SIVT—Processing, Viewing, and Analysis of 3D Scans of the Porthole Slab and Slab B2 of Züschen I. *Proceedings of the CAA2015. Keep the Revolution Going. Proceedings of the 43rd Annual Conference on Computer Applications and Quantitative Methods In Archaeology*:1067–1080.
- Weßling, Ronny, Jakob Maurer, and Alexandra Krenn-Leeb
2013 Structure from Motion for Systematic Single Surface Documentation of Archaeological Excavations. *Proceedings of the Proceedings of the 18th International Conference on Cultural Heritage and New Technologies (CHNT 18). Vienna, Austria, 11th–13th November*:1-13, http://www.chnt.at/wp-content/uploads/We%C3%9Fling_2014.pdf.
- Wilhelmson, Helene, and Nicoló Dell'Unto
2015 Virtual Taphonomy: A New Method Integrating Excavation and Postprocessing in an Archaeological Context. *American Journal of Physical Anthropology* 157(2):305–321.
- Williams, Ken, and Elizabeth Shee Twohig
2015 From Sketchbook to Structure from Motion: Recording Prehistoric Carvings in Ireland. *Digital Applications in Archaeology and Cultural Heritage* 2(2):120–131.
- Yamafune, Kotaro
2016 Using Computer Vision Photogrammetry (Agisoft PhotoScan) to Record and Analyze Underwater Shipwreck Sites, PhD Dissertation, Department of Anthropology, Texas A&M University.
- Zeppelzauer, Matthias, Georg Poier, Markus Seidl, Christian Reinbacher, Christian Breiteneder, Horst Bischof, and Samuel Schuster
2015 Interactive Segmentation of Rock-Art in High-Resolution 3D Reconstructions. *Proceedings of the Digital Heritage, 2015* 2: 37–44.
- Zeppelzauer, Matthias, Georg Poier, Markus Seidl, Christian Reinbacher, Samuel Schuster, Christian Breiteneder and Horst Bischof
2016 Interactive 3D Segmentation of Rock-Art by Enhanced Depth Maps and Gradient Preserving Regularization. *Journal on Computing and Cultural Heritage (JOCCH)* 9(4):19.

AUTHORS INFORMATION

Sean W. Hixon ■ Department of Anthropology, Pennsylvania State University, 403 Carpenter Building, University Park, PA 16802, USA (hixon@psu.edu, corresponding author)

Carl P. Lipo ■ Department of Anthropology, State University of New York Binghamton, Science 1, Room 166, Binghamton, NY 13902, USA (clipo@binghamton.edu)

Terry L. Hunt ■ Robert D. Clark Honors College, University of Oregon, 129 Chapman Hall, Eugene, OR 97403, USA (tihunt@uoregon.edu)

Christopher Lee ■ Department of Geography, California State University, Long Beach, 1250 Bellflower Blvd., Long Beach, CA 90840, USA (Christopher.Lee@csulb.edu)