

1-18-2018

Review of Oyster Data - 2017

Kevin Sullivan
NH Fish & Game Department

Follow this and additional works at: <https://scholars.unh.edu/prep>

Recommended Citation

Sullivan, Kevin, "Review of Oyster Data - 2017" (2018). *PREP Reports & Publications*. 416.
<https://scholars.unh.edu/prep/416>

This Report is brought to you for free and open access by the Institute for the Study of Earth, Oceans, and Space (EOS) at University of New Hampshire Scholars' Repository. It has been accepted for inclusion in PREP Reports & Publications by an authorized administrator of University of New Hampshire Scholars' Repository. For more information, please contact nicole.hentz@unh.edu.

STATE OF NEW HAMPSHIRE

Inter-Department Communication

**NH Fish & Game Department
Region 3
225 Main Street
Durham, NH 03824-4732
Tel: (603)868-1095
Fax: (603)868-3305**

TO: Douglas E. Grout
FROM: Kevin Sullivan
SUBJECT: Review of Oyster Data - 2017
DATE: January 18, 2018

I have reviewed the Year 2017 oyster density data developed this fall. Specifically, the following samples were collected:

10/17	5 quadrats from Adams Point
10/17	5 quadrats from Nannies Island
10/18	5 quadrats from Oyster River
10/19	5 quadrats from Woodman Point
10/19	5 quadrats from Squamscott River
10/20	5 quadrats from Piscataqua River

Collection of the samples was done by SCUBA diver placement of a quarter meter square frame over the bottom where oysters were observed. The oysters within the frame were removed by hand down to the point where no living oysters were present. Catch bags were used to bring the sample to the attending boat. Finally the catch bag contents were sorted and rinsed clean then examined for live oysters. Each live oyster was measured (height in mm) with calipers and the size recorded.

From these data, the usual quantitative density indices have been generated; average total/0.25M², average 0-20mm/0.25M², average 0-40mm/0.25M², average 61mm and greater/0.25M², and average 81mm and greater/0.25M². The 0-20mm and 0-40mm size classes capture the spatfall for the 2017 reproductive period. Although smaller males may be capable, oysters 61mm and greater can confidently be considered capable of gametogenesis and are potential contributors to the annual spawning event. This provides an index of the spawning stock biomass for the population. A measure of harvestable oysters is expressed with the 81mm and greater size class, however, some harvesters may take oysters smaller because of the relative scarcity of large oysters thus, looking at the density of oysters at all size ranges greater than 61 mm may be more appropriate. A complete display of the 2017 sample counts and averages are shown in the attached Tables 1 and 2. These same data are shown graphically as Figure 1. Figure 2 shows total oyster density over the time series.

The 2017 oyster survey results provide a basis for some conclusions as well as speculation. From these data, one can gain insight on annual spatfall, population composition, and harvestable oysters. The collection also provides information on oyster associates, both predators and commensals.

When compared to spatfall records collected since 1991, the 2017 numbers were poor (i.e. lower than the most recent 5 year average for 0-20mm) for all locations. Nannies Island showed no spatfall at all. This was the fourth straight year without a spatfall here which, except for years 2006 and 2007, has ranked last for the six beds surveyed.

Inconsistency of spatfalls, year to year, seems to be a regular occurrence for Great Bay oysters. In addition, there are clearly some site by site annual differences. This was observed over forty years ago when annual spatfalls were monitored 1965 to 1968 (Ayer et al 1970¹). Figure 3 shows this variability. Highest spatfalls over the 26 years sampling period were seen in 2006 and 2007. Also, 2008 and 2014 to 2017 had relatively high spatfalls when compared to other years since the late 1990s. What conditions are in play to cause this can only be subject to speculation. Additional detailed studies of the complete reproductive events, gametogenesis to successful spatfall, would be needed to further elucidate spatfall inconsistency.

The total live oyster counts (mean #/.25m²) on the Adam's Point, Nannies Island, and Woodman Point beds were lower than most of the sampled years, and the Oyster River bed had the second lowest total live oyster count of all sampled years. The Piscataqua River total oyster count was higher than 10 out of the past 20 years, and the Squamscott River was higher than 6 out of the previous 10 years. Nannies Island is the bed with lowest total count. It is noteworthy to mention that the predaceous snail *Urosalpinx cinereus* (oyster drill) has been found here in greatest numbers over the past years. It has also historically been an area with the highest prevalence of the oyster disease Dermo, although no live oysters were found for testing in 2017. The Oyster River bed, unlike Adams Point, Nannies Island and Woodman Point, is not open for harvest by those holding recreational licenses. This difference may provide some insight on harvest related impact. Comparisons continue to show only a slight difference between numbers of harvestable sized oysters (i.e. those in excess of 81mm) between these four beds. When numbers of harvestable oysters present are tallied over the past five years of this survey, Oyster River numbers are marginally higher than Adams point, at times higher than Woodman point, and are about four times those at the Nannies Island bed which seems to have a recruitment deficiency and survival problem.

The Piscataqua River is unique being farthest from all other beds and also appearing to have had a numbers drop in 2008 and beyond following a possible oiling of the bottom that occurred following dredging of the lower Cocheco River. For 2017 total oyster numbers declined from 2016, but are relatively high for all values observed immediately following the 2008 drop.

The abundance of larger, harvestable sized oysters continues to remain low. The three beds affected by harvest; Woodman Point, Nannies Island, and Adams Point show low numbers, due in part to these areas being utilized by licensed harvesters.

The annual oyster survey offers an opportunity for observation of the various oyster associates, both predators and commensals. Two gastropod predators, oyster drill (*Urosalpinx* sp.) and *Odostomia* sp. have been present in Great Bay oyster beds in the past but only oyster drills were seen in 2017. The only other gastropod associates noted were the somewhat ubiquitous slipper shell (both *Crepidula plana* and *fornicata*) and the mud snails (*Ilyanassa* spp). Crab predators found on the beds were the mud crabs (*Xanthidae*), green crabs, and cancer crabs.

While boring sponge (*Cliona* sp.) is not an actual predator since it derives no nutrition from the oyster, it nevertheless may have an adverse effect on its host. Shells in some instances can be heavily infested with sponge and this no doubt results in an energy expenditure for the oyster when sponge penetration reaches the point the host must lay down more nacre to seal off the shell interior. *Cliona* sponge may also make shells very fragile and tonging damage to unharvested oysters can result. Another sponge, *Microciona prolifera* can be found on Great Bay oysters.

¹ An investigation of the possibility of Seed Oyster Production in Great Bay, New Hampshire – Marine Survey Report No. 2

The mud worm *Polydora* is a common commensal of Great Bay oysters and results in the formation of what are known as “mud blisters”. Heavy infestation of mud worms can impose an energy drain to the host oyster as they cover the accumulating mud with the nacre necessary to protect the visceral mass.

A colonial chelostomate ectoproct was first seen on old shell at Nannies Island in 2013. While this was likely present in previous years, it had never before undergone further examination. A tentative identification of it suggests either *Schizoporella* sp. or *Cribrilina* sp. The only foreseeable negative impact it may have on oysters is the likelihood its growth on shell makes an unsuitable surface for spatfall.

During this fall’s sampling of oysters, specimens were taken from Adams Point, Oyster River, Nannies Island, and Piscataqua River for testing by the Rutgers Shellfish Lab for MSX and DERMO. Results of these examinations show the continued presence Dermo in all sampled beds, as well as a limited number of MSX infected oysters.



Kevin Sullivan
Marine Biologist II

KMS

Attachments

Table 1. Measurement summary of size ranges by sample site for all sampled years.

Adams Pt.		Mean #/.25m²				
Year	Replicates	0-20mm	0-40mm	61+	81+ mm	Total Oysters
1993	6	0.0	3.5	57.2	30.0	78.0
1996	6	0.0	1.2	18.2	13.2	24.2
1998	8	1.5	3.3	9.8	6.9	14.1
2000	3	0.7	15.7	3.7	1.7	25.3
2001	4	0.0	0.5	2.5	1.8	9.3
2002	10	15.5	16.9	5.2	0.7	27.8
2003	5	1.0	14.4	7.6	3.4	33.4
2004	5	0.0	1.2	15.4	1.8	29.2
2005	5	0.0	0.8	21.4	8.4	25.6
2006	5	122.4	131.4	11.2	6.6	143.6
2007	5	35.4	221.0	6.0	2.2	289.8
2008	5	3.2	33.4	16.4	1.8	91.4
2009	5	2.8	13.4	27.2	1.8	75.0
2010	5	2.2	12.4	9.2	0.4	35.4
2011	5	9.0	17.8	12.4	4.6	38.0
2012	5	1.0	5.4	6.4	3.2	15.6
2013	5	28.4	32.2	6.2	1.0	42.4
2014	5	0.4	11.4	4.4	1.6	25.2
2015	5	16.8	18.4	2.6	0.4	25.0
2016	5	0.6	2.0	8.8	1.0	14.2
2017	5	0.0	0.4	8.8	3.2	11.0

Nannies Island		Mean #/.25m²				
Year	Replicates	0-20mm	0-40mm	61+ mm	81+ mm	Total Oysters
1991	4	20.3	45.5	36.5	22.3	103.3
1993	6	0.2	3.2	55.8	29.8	67.2
1995	10	0.0	1.1	16.1	12.2	19.2
1996	4	0.3	3.3	30.8	16.8	53.5
1998	27	3.5	6.1	12.1	7.2	21.0
1999	5	2.8	13.2	5.4	3.0	21.8
2000	5	1.4	8.6	1.8	1.2	15.0
2001	4	0.3	3.0	13.3	3.5	29.5
2002	5	0.2	0.4	5.0	0.8	7.4
2003	5	0.8	1.8	6.2	1.8	9.0
2004	3	0	0.0	1.3	0.7	1.3
2005	2	0	0.0	1.0	1.0	1.0
2006	5	152.6	165.0	0.0	0.0	165.0
2007	5	15.6	185.0	6.6	1.4	283.8
2008	5	1.2	16.6	16.4	0.8	74.8
2009	5	2.2	11.4	25.6	2.2	80.0
2010	5	2.8	9.0	18.2	3.0	41.4
2011	5	2.8	8.6	9.4	0.8	24.8
2012	5	0.2	4.6	4.6	2.2	16.2
2013	5	1.0	1.8	2.2	0.6	6.2
2014	5	0.0	0.0	1.6	0.8	1.8
2015	5	0.0	0.0	1.2	0.4	1.4
2016	5	0.0	0.0	2.6	1.6	2.6
2017	5	0.0	0.0	0.0	0.0	0.0

Oyster River		<u>Mean #/.25m²</u>				
Year	Replicates	0-20mm	0-40mm	61+ mm	81+ mm	Total Oysters
1993	11	0.0	0.7	36.3	27.4	39.6
1995	6	0.2	3.2	17.0	11.7	30.5
1996	5	0.0	1.6	17.6	10.2	23.6
1998	6	1.3	7.0	9.2	6.5	20.5
1999	5	7.8	11.4	3.8	2.6	16.6
2000	5	0.4	10.2	4.6	3.0	20.6
2001	5	0.6	2.0	9.8	3.6	21.6
2002	5	34.8	36.4	5.2	2.4	43.4
2003	5	2.4	21.2	6.8	2.6	60.8
2004	5	0.0	5.4	33.8	6.2	80.6
2005	5	0.6	1.4	24.6	7.2	33.6
2006	5	235.6	247.6	21.4	7.4	270.6
2007	5	37.4	231.8	20.4	10.2	381.0
2008	5	2.8	28.0	68.4	19.8	139.2
2010	5	4.4	13.4	24.0	9.0	45.0
2011	5	0.8	2.8	12.8	5.8	19.2
2012	5	0.8	4.8	7.2	4.4	15.6
2013	5	20.4	23.4	7.8	4.0	33.8
2014	5	1.6	17.2	3.8	1.6	27.8
2015	5	10.8	16.4	6.2	0.6	32.8
2016	5	2.0	4.4	4.6	1.8	13.6
2017	5	0.2	1.6	9.8	4.0	15.6

Piscataqua River		<u>Mean #/.25m²</u>				
Year	Replicates	0-20mm	0-40mm	61+ mm	81+ mm	Total Oysters
1993	7	5.7	5.9	16.9	5.1	25.9
1997	3	6.3	9.0	1.3	0.7	11.3
1998	7	1.9	9.0	1.7	1.3	14.0
1999	5	8.2	13.0	0.2	0.0	14.8
2000	3	2.0	19.0	1.0	0.3	22.3
2001	4	0.0	3.5	2.5	0.3	13.3
2002	5	75.2	75.8	1.4	0.2	79.2
2003	5	1.2	78.0	1.6	0.2	93.0
2004	5	0.2	23.4	2.6	0.0	67.8
2005	2	0.0	2.5	7.5	1.0	40.0
2006	5	15.2	15.2	6.4	1.2	25.2
2007	5	13.0	62.4	10.0	5.0	77.4
2008	5	0.2	2.2	0.4	0.0	4.4
2010	5	1.2	2.0	2.4	0.6	6.0
2011	5	0.0	0.4	2.8	1.2	4.4
2012	5	0.0	0.4	0.0	0.0	0.6
2013	5	34.4	37.4	2.8	1.0	44.2
2014	5	1.2	9.6	1.2	0.0	11.8
2015	5	3.6	4.2	1.0	0.2	11.0
2016	5	5.0	13.6	5.4	0.2	28.6
2017	5	0.0	4.2	8.4	1.2	19.6

Woodman Pt.		<u>Mean #/.25m²</u>				
Year	Replicates	0-20mm	0-40mm	61+ mm	81+ mm	Total Oysters
1991	4	2.3	16.3	68.5	38.3	102.3
1993	19	0.0	0.4	28.1	15.7	32.1
1995	7	2.0	14.7	18.7	8.6	64.9
1996	4	0.3	5.3	30.0	9.8	57.8
1998	6	1.0	2.8	15.0	7.2	20.5
1999	5	16.4	21.2	7.6	5.6	30.6
2000	3	1.3	22.7	4.3	1.0	31.7
2001	6	0.3	5.2	10.5	3.5	34.8
2002	5	24.0	24.2	5.4	1.6	33.6
2003	5	0.4	12.4	4.8	2.6	29.8
2004	5	0.2	0.6	12.4	3.0	25.0
2005	5	0.4	0.4	4.6	2.2	7.6
2006	5	187.2	216.2	12.8	7.4	231.6
2007	5	11.4	93.4	5.6	1.0	149.6
2008	5	1.2	17.8	22.0	2.2	75.0
2009	5	1.2	14.2	24.8	2.2	76.4
2010	5	1.8	6.8	14.6	2.0	33.4
2011	5	1.6	7.0	10.2	3.2	22.2
2012	5	0.6	2.8	7.0	2.2	14.8
2013	5	17.4	22.6	5.4	2.2	30.8
2014	5	1.6	6.4	4.4	1.6	21.2
2015	5	6.2	7.4	7.8	0.8	22.6
2016	5	0.2	0.2	6.6	2.8	8.0
2017	5	0.0	0.6	18.4	9.2	20.4

Bellamy River		<u>Mean #/.25m²</u>				
Year	Replicates	0-20mm	0-40mm	61+ mm	81+ mm	Total Oysters
1993	3	0.0	0.0	28.0	24.7	28.7
1996	4	0.0	0.0	5.8	3.5	7.8

Pomeroy Cove		<u>Mean #/.25m²</u>				
Year	Replicates	0-20mm	0-40mm	61+ mm	81+ mm	Total Oysters
1996	7	0.0	0.4	3.4	2.0	4.0

Salmon Falls River		<u>Mean #/.25m²</u>				
Year	Replicates	0-20mm	0-40mm	61+ mm	81+ mm	Total Oysters
1997	3	3.3	6.0	0.7	0.0	7.0

Squamscott River		<u>Mean #/.25m²</u>				
Year	Replicates	0-20mm	0-40mm	61+ mm	81+ mm	Total Oysters
1998	6	10.3	24.3	4.0	2.3	35.8
2001	3	5.0	12.0	4.7	2.0	25.0
2005	3	7.3	17.3	100.3	40.3	151.7
2008	5	2.8	43.8	46.6	11.0	149.8
2010	5	9.0	18.4	22.6	8.0	51.8
2011	5	4.2	14.0	14.0	6.2	33.8
2012	5	3.0	7.6	8.6	3.4	21.4
2014	5	36.2	67.4	18.8	4.6	115.0
2015	5	16.2	28.0	17.2	3.2	59.2
2016	5	50.2	65.8	13.4	5.4	93.6
2017	5	2.8	22.2	28.0	7.2	93.4

Table 2. Oyster counts and averages of each size range for all sampled sites, 2017.

Nannies Island							
Replicate	0-20mm	21-40mm	41-60mm	61-80mm	81-100mm	101-120m	121-140mm
1	0	0	0	0	0	0	0
2	0	0	0	0	0	0	0
3	0	0	0	0	0	0	0
4	0	0	0	0	0	0	0
5	0	0	0	0	0	0	0
Average	0	0	0	0	0	0	0
STDev	0.00	0.00	0.00	0.00	0.00	0.00	0.00
Sum	0	0	0	0	0	0	0
%	0.0%	0.0%	0.0%	0.0%	0.0%	0.0%	0.0%

Oyster River							
Replicate	0-20mm	21-40mm	41-60mm	61-80mm	81-100mm	101-120m	121-140mm
1	1	0	1	3	0	0	0
2	0	0	4	7	3	2	0
3	0	2	3	8	4	3	1
4	0	0	3	1	2	0	0
5	0	5	10	10	4	0	0
Average	0.2	1.4	4.2	5.8	2.6	1	0.2
STDev	0.45	2.19	3.42	3.70	1.67	1.41	0.45
Sum	1	7	21	29	13	5	1
%	1.3%	9.1%	27.3%	37.7%	16.9%	6.5%	1.3%

Adams Pt.							
Replicate	0-20mm	21-40mm	41-60mm	61-80mm	81-100mm	101-120m	121-140mm
1	0	1	1	6	4	0	0
2	0	0	3	10	2	0	0
3	0	0	1	0	6	1	0
4	0	1	0	3	0	0	0
5	0	0	4	9	3	0	0
Average	0	0.4	1.8	5.6	3	0.2	0
STDev	0.00	0.55	1.64	4.16	2.24	0.45	0.00
Sum	0	2	9	28	15	1	0
%	0.0%	3.6%	16.4%	50.9%	27.3%	1.8%	0.0%

Woodman Pt.							
Replicate	0-20mm	21-40mm	41-60mm	61-80mm	81-100mm	101-120m	121-140mm
1	0	1	0	15	3	2	0
2	0	1	2	5	12	4	0
3	0	1	1	10	11	1	1
4	0	0	3	8	7	0	0
5	0	0	1	8	5	0	0
Average	0	0.6	1.4	9.2	7.6	1.4	0.2
STDev	0.00	0.55	1.14	3.70	3.85	1.67	0.45
Sum	0	3	7	46	38	7	1
%	0.0%	2.9%	6.9%	45.1%	37.3%	6.9%	1.0%

Piscataqua River

Replicate	0-20mm	21-40mm	41-60mm	61-80mm	81-100mm	101-120m	121-140mm
1	0	5	10	8	1	0	0
2	0	4	4	7	0	0	0
3	0	2	6	5	2	0	0
4	0	9	11	9	2	0	0
5	0	1	4	7	0	1	0
Average	0	4.2	7	7.2	1	0.2	0
STDev	0.00	3.11	3.32	1.48	1.00	0.45	0.00
Sum	0	21	35	36	5	1	0
%	0.0%	21.4%	35.7%	36.7%	5.1%	1.0%	0.0%

Squamscott River

Replicate	0-20mm	21-40mm	41-60mm	61-80mm	81-100mm	101-120m	121-140mm
1	3	16	56	25	11	2	0
2	3	20	36	21	3	1	0
3	3	24	38	14	4	0	0
4	2	21	48	26	4	2	1
5	3	16	38	18	7	1	0
Average	2.8	19.4	43.2	20.8	5.8	1.2	0.2
STDev	0.45	3.44	8.56	4.97	3.27	0.84	0.45
Sum	14	97	216	104	29	6	1
%	3.0%	20.8%	46.3%	22.3%	6.2%	1.3%	0.2%

Figure 1. Density of various size classes per 0.25 m² quadrat at Great Bay Oyster Beds sampled in 2017.

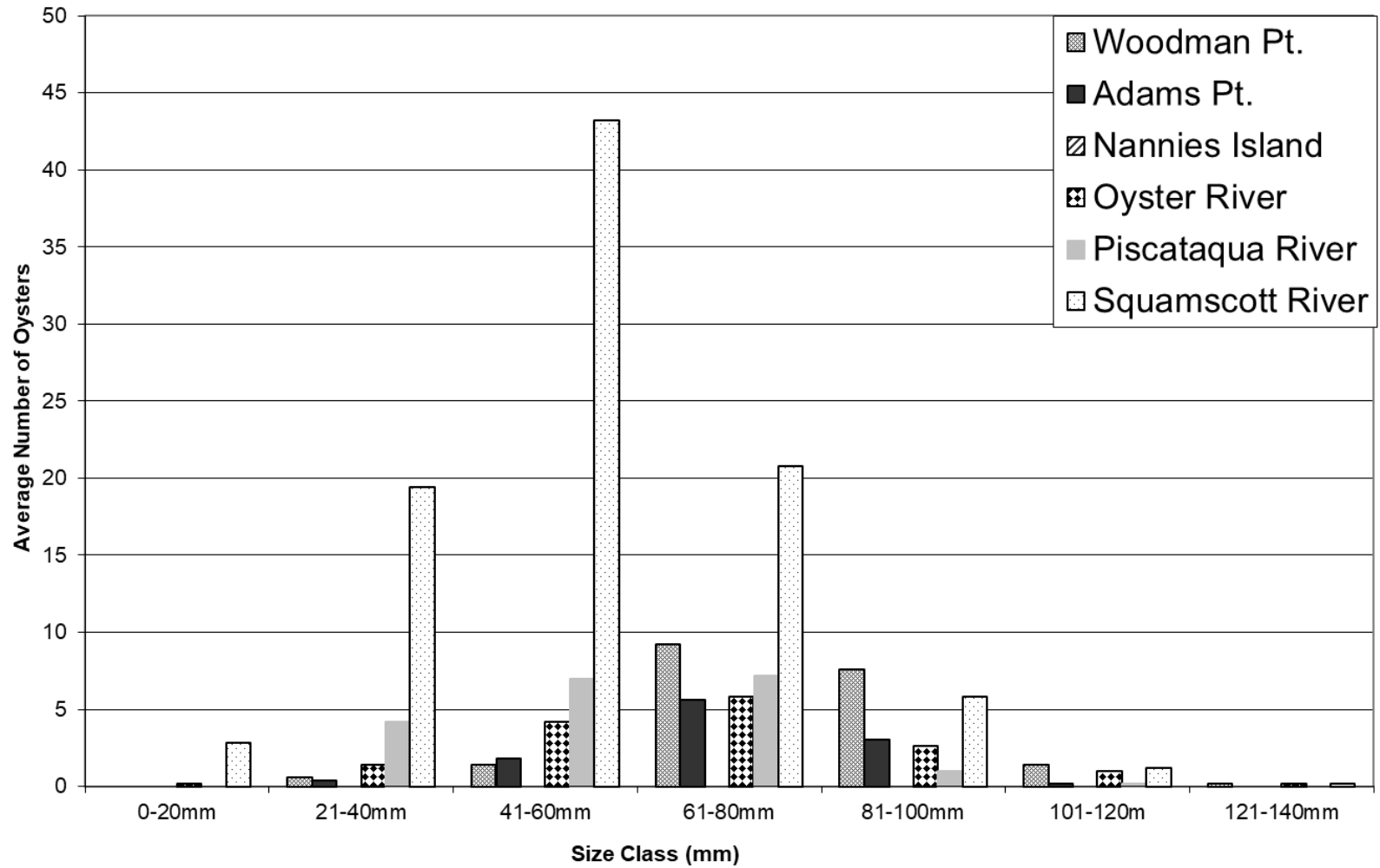
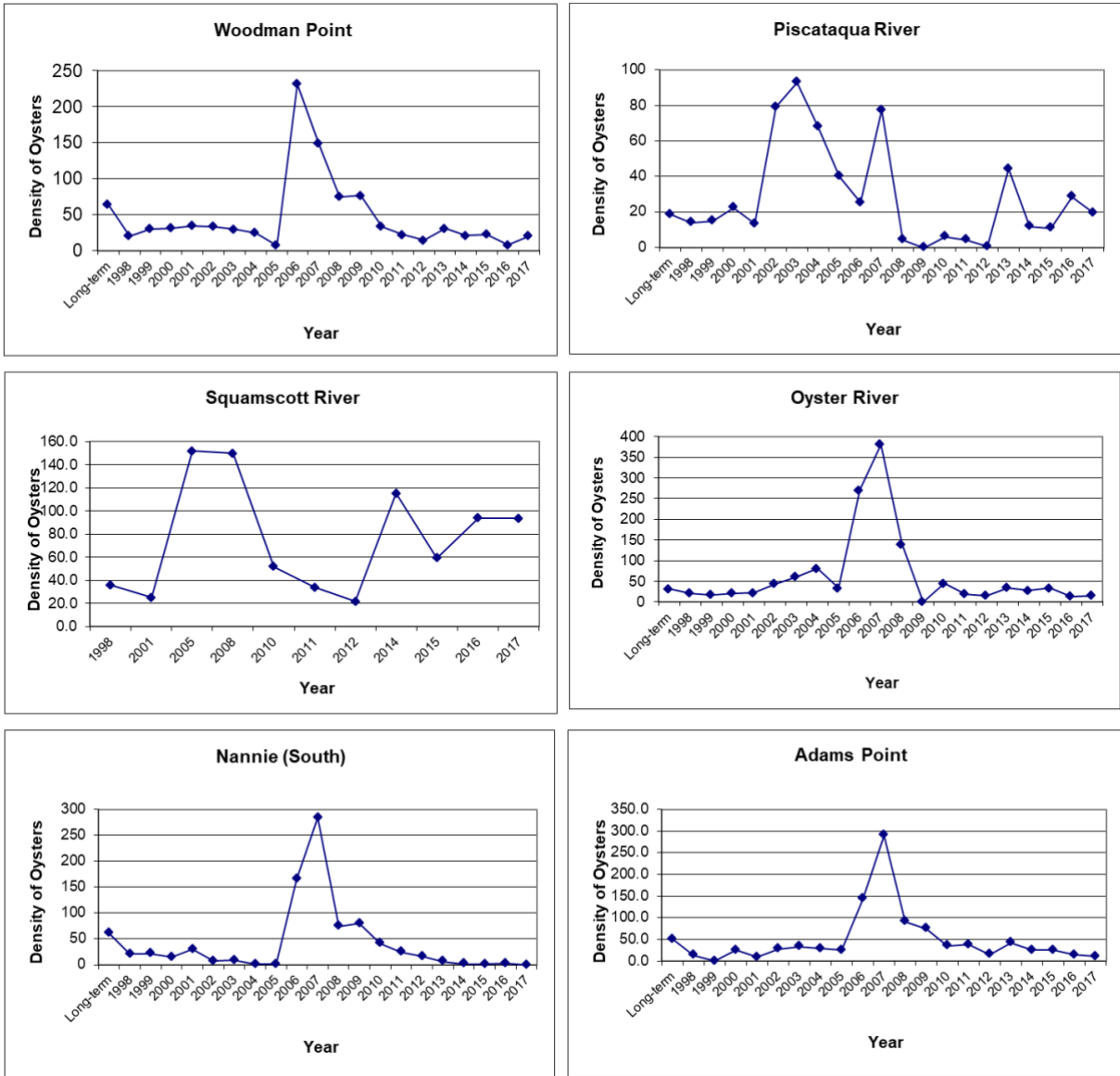


Figure 2. Total oyster density per 0.25 m² quadrat, 1991-2017.



Note: "Long-term" is the average of 1991 through 1997 data.

Figure 3. Density of spat per 0.25 m² quadrat at six Great Bay Oyster Beds, 1991-2017.

