

GRANITE STATE POLL

THE UNIVERSITY OF NEW HAMPSHIRE

August 13, 2008

YEAR AFTER SURGE, NH SEES NO LIGHT AT END OF IRAQ TUNNEL

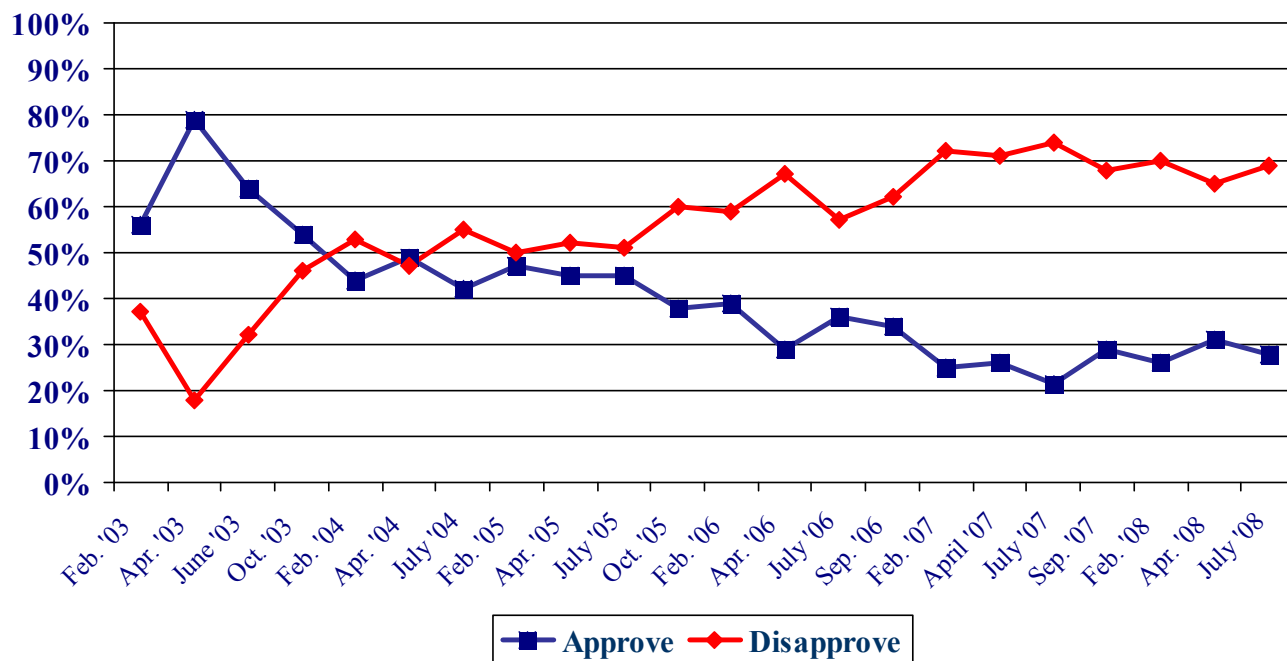
By: Andrew E. Smith, Ph.D.
 UNH Survey Center
 603/862-2226
www.unh.edu/survey-center

DURHAM, NH – One year after the “surge” by U.S. troops in Iraq, and despite a decrease in American and Iraqi casualties, New Hampshire residents are strongly opposed to the war and are pessimistic about U.S. chances of eventual victory.

These findings are based on the latest **Granite State Poll**,* conducted by the University of New Hampshire Survey Center. Five hundred (519) randomly selected New Hampshire adults were interviewed by telephone between July 11 and July 20, 2008. The margin of sampling error for the survey is +/-4.3 percent.

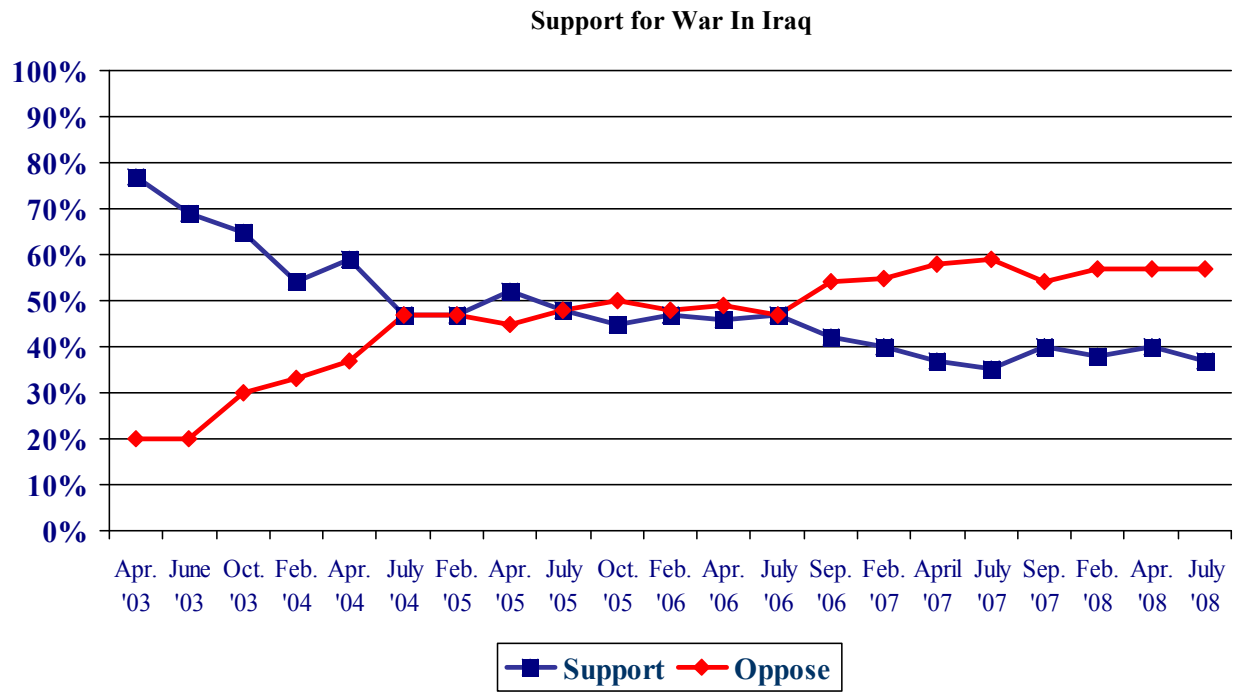
Just over a year ago, the Bush Administration made a significant change in its Iraq policy by committing new troops and aggressively working to pacify the country. This policy, known as the “surge”, has been, according to many observers, successful in reducing U.S. and Iraqi casualties and in stabilizing Iraq. But in New Hampshire, the Bush Administration has not gotten any political benefit for any improvement the surge may have brought to Iraq. Only 28% of Granite State adults approve of the way Bush has handled the situation in Iraq, 69% disapprove, and 3% are neutral. These numbers have been essentially unchanged since the surge was undertaken.

Bush Approval: Handling Situation in Iraq



* We ask that this copyrighted information be referred to as *the Granite State Poll*, conducted by the University of New Hampshire Survey Center.

Support for the U.S. having gone into Iraq in the first place remains low. Currently, 37% of Granite Staters support the U.S. having gone to war in Iraq, 57% oppose the U.S. having gone to war, and 6% are neutral. But it is important to note that solid majorities of Republicans (67%) and conservatives (65%) continue to support the war in Iraq.

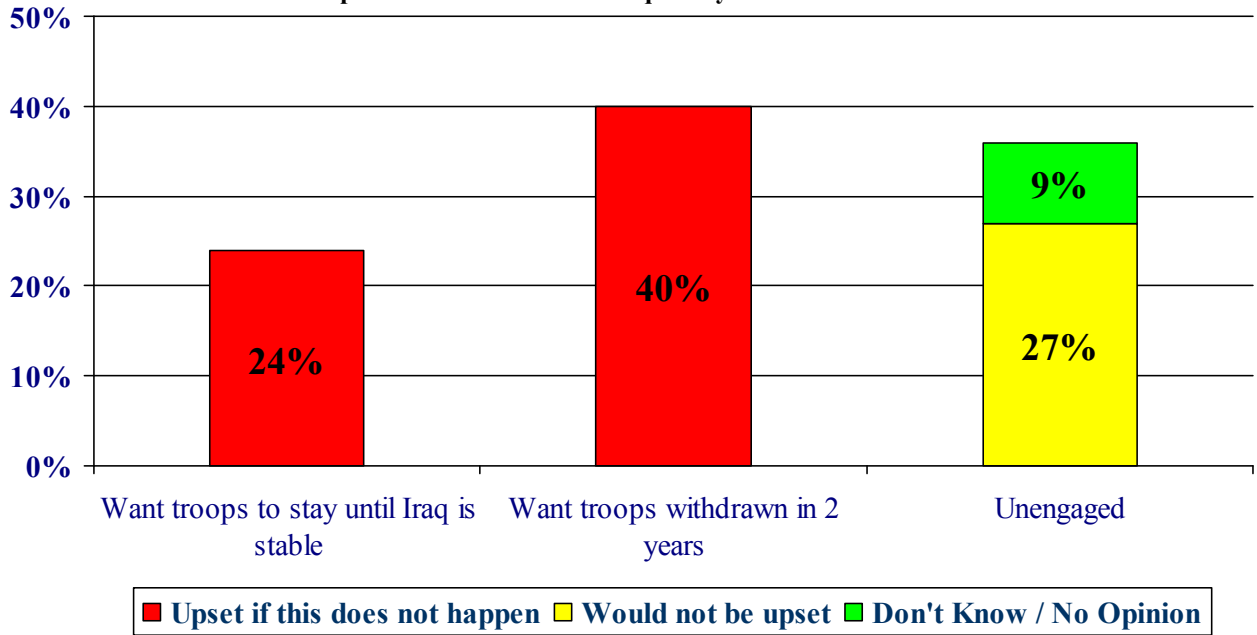


Troop Pullout From Iraq

There has been considerable debate between John McCain and Barack Obama about when and how American troops should be removed from Iraq with Obama pledging to remove troops within 16 months of taking office and McCain saying he would keep troops in Iraq until the country is stable. When initially asked, people in New Hampshire are divided over which policy they support with 49% saying that troops should be withdrawn within two years and 42% saying troops should be kept in Iraq until the country is stable, and 9% saying they are unsure.

And while the public is divided about the desired policy, there is also considerable difference in the intensity which these positions are held. Most of those respondents who want U.S. troops withdrawn within two years say they would be upset if the next president decided to keep troops in Iraq until the country is stable while far fewer of those who support keeping the troops in Iraq until the country is stable say they would be upset if troops were withdrawn. Forty percent of all New Hampshire adults say they would be upset if troops were kept in Iraq until the country is stable while only 24% would be upset if troops were withdrawn in the next 2 years. A considerable portion of the electorate (36%) is unengaged on the issue with 9% have no opinion and another 27% saying they would not be upset if their desired position were not followed.

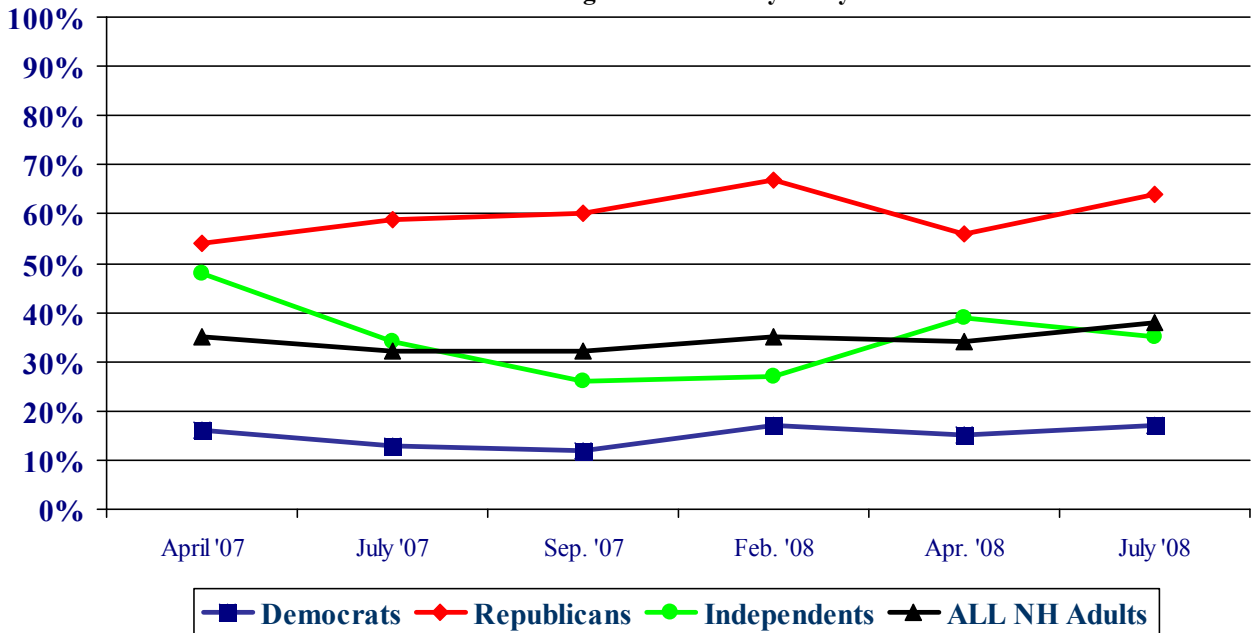
Upset If Your Preferred Iraq Policy Were Not Followed?



Can the US Win?

There has been a slight uptick in the percentage of New Hampshire adults who think the U.S. can win the war in Iraq. In the most recent Granite State Poll, 38% believe the US can win the war in Iraq, 52% think the US cannot win the war, and 10% don't know. One year ago, only 32% believed the U.S. could win the war in Iraq. Republicans are particularly likely to think the U.S. can win in Iraq -- 64% believe the US can win -- while only 35% of Independents and 17% of Democrats think the US can win.

Percent Believing US Can Win by Party ID



Granite State Poll Methodology

Five hundred (519) randomly selected New Hampshire adults were interviewed by telephone between July 11 and July 20, 2008. The sample was selected at random from all household in New Hampshire with a land-line telephone and a respondent was selected at random within each household. The margin of sampling error for the survey is +/-4.3 percent.

The data have been weighted to adjust for numbers of adults and telephone lines within households, respondent sex, and region of the state. In addition to potential sampling error, all surveys have other potential sources of non-sampling error including question order effects, question wording effects, and non-response.

Presidential Approval - Handling of Situation in Iraq

"Do you approve or disapprove of the way George W. Bush is handling the situation with Iraq?"

	<u>Approve</u>	<u>Neutral</u>	<u>Disapprove</u>	<u>(N)</u>
July '08	28%	3%	69%	(518)
Apr. '08	31%	4%	65%	(497)
Feb. '08	26%	3%	70%	(551)
Sep. '07	29%	3%	68%	(508)
July '07	21%	4%	74%	(521)
Apr. '07	26%	3%	71%	(512)
Feb. '07	25%	2%	72%	(527)
Sept. '06	34%	3%	62%	(511)
July '06	36%	6%	57%	(499)
Apr. '06	29%	4%	67%	(501)
Feb. '06	39%	3%	59%	(498)
Oct. '05	38%	2%	60%	(506)
July '05	45%	3%	51%	(499)
Apr. '05	45%	3%	52%	(491)
Feb. '05	47%	3%	50%	(535)
July '04	42%	3%	55%	(501)
Apr. '04	49%	4%	47%	(540)
Feb. '04	44%	3%	53%	(509)
Oct. '03	54%	3%	42%	(500)
June '03	64%	4%	32%	(513)
Apr. '03	79%	2%	18%	(503)
Feb. '03	56%	7%	37%	(646)

Support for War in Iraq

“Do you support or oppose the United States having gone to war with Iraq?”

	<u>Support</u>	<u>Neutral</u>	<u>Oppose</u>	<u>(N)</u>
July '08	37%	6%	57%	(511)
Apr. '08	40%	3%	57%	(498)
Feb. '08	38%	5%	57%	(548)
Sep. '07	40%	6%	54%	(506)
July '07	35%	6%	59%	(516)
Apr. '07	37%	5%	58%	(510)
Feb. '07	40%	5%	55%	(525)
Sept. '06	42%	4%	54%	(510)
July '06	47%	6%	47%	(500)
Apr. '06	46%	5%	49%	(496)
Feb. '06	47%	5%	48%	(500)
Oct. '05	45%	4%	50%	(502)
July '05	48%	5%	48%	(493)
Apr. '05	52%	3%	45%	(489)
Feb. '05	47%	6%	47%	(537)
July '04	47%	6%	47%	(498)
Apr. '04	59%	4%	37%	(536)
Feb. '04	54%	3%	33%	(509)
Oct. '03	65%	5%	30%	(496)
June '03	69%	4%	20%	(513)
Apr. '03	77%	4%	20%	(506)

Position on Troops in Iraq

“Which would you like the next president of the United States to do in Iraq: [ROTATE RESPONSES 1 & 2] Keep troops there until Iraq is relatively stable politically, even if it takes four years or more, or take steps to remove most U.S. troops from Iraq within two years of taking office, or don't you have an opinion on this?”

	<u>Percent</u>
Keep troops in Iraq until stable	42%
Remove troops within two years	49%
Don't know	9%
(N=)	(514)

Upset if Next President Does Not Take Your Position on Iraq?

“Suppose the next president decided to (take steps to remove most U.S. troops from Iraq within two years of taking office / keep troops in Iraq until the country is relatively stable politically, even if it takes four years or more), would you be very upset ... somewhat upset ... not too upset ... or not upset at all?”

	<u>Percent</u>
Upset if troops removed	24%
Not upset if troops removed	18%
Don't know	9%
Not upset if troops kept until stable	9%
Upset if troops kept until stable	40%
(N=)	(514)

Can US Win in Iraq?

“Do you think the United States can win or cannot win the war in Iraq?”

	<u>Can Win</u>	<u>Cannot Win</u>	<u>Don't Know</u>	<u>(N)</u>
July '08	38%	52%	10%	(511)
Apr. '08	34%	56%	10%	(495)
Feb. '08	35%	53%	12%	(544)
Sep. '07	32%	55%	13%	(503)
July '07	32%	57%	11%	(504)
Apr. '07	35%	55%	10%	(512)

Presidential Approval Rating - Iraq

STATEWIDE	<u>Approve</u> 28%	<u>Neutral</u> 3%	<u>Disapprove</u> 69%	<u>(N=)</u> 518
Registered Democrat	8%	2%	91%	128
Undeclared	26%	1%	73%	202
Registered Republican	50%	7%	43%	135
Not registered	24%	5%	71%	49
Democrat	5%	2%	93%	205
Independent	16%	1%	83%	80
Republican	56%	5%	38%	202
Liberal	5%	1%	94%	116
Moderate	19%	4%	77%	203
Conservative	57%	4%	39%	155
Union household	21%	1%	78%	69
Non-union	30%	3%	67%	425
5 years or less in NH	26%	1%	73%	45
6 to 10 years	39%	0%	61%	36
11 to 20 years	27%	2%	71%	89
More than 20 years	28%	4%	68%	312
18 to 34	21%	3%	76%	59
35 to 49	31%	1%	68%	120
50 to 64	26%	5%	69%	194
65 and over	35%	4%	61%	101
Male	35%	3%	62%	249
Female	21%	4%	75%	268
High school or less	26%	5%	69%	113
Some college	30%	6%	64%	114
College graduate	31%	2%	68%	157
Post-graduate	26%	0%	74%	109
Less than \$30K	26%	6%	68%	48
\$30K to \$60K	32%	1%	67%	74
\$60K to \$75K	29%	2%	69%	54
\$75K to \$100K	36%	1%	63%	65
More than \$100K	25%	2%	73%	122
Married	31%	2%	67%	325
Divorced/separated	24%	7%	68%	92
Never married	22%	3%	75%	76
Protestant	36%	3%	61%	175
Catholic	32%	2%	66%	171
Other	14%	5%	80%	122
Attend services 1 or more/week	34%	2%	64%	127
1-2 times a month	40%	3%	56%	59
Less often	27%	3%	70%	145
Never	21%	5%	74%	149
North Country	28%	15%	58%	47
Central/Lakes	23%	1%	75%	86
Connecticut Valley	26%	3%	71%	73
Mass Border	30%	2%	68%	156
Seacoast	34%	2%	63%	81
Manchester Area	22%	2%	76%	75
1st Cong. District	29%	4%	67%	258
2nd Cong. District	26%	3%	71%	259

Support / Oppose US War in Iraq

STATEWIDE	<u>Support</u> 37%	<u>Neutral</u> 6%	<u>Oppose</u> 57%	<u>(N=)</u> 511
Registered Democrat	10%	5%	85%	124
Undeclared	36%	6%	58%	200
Registered Republican	63%	8%	29%	134
Not registered	39%	9%	52%	48
Democrat	13%	4%	83%	200
Independent	26%	10%	64%	79
Republican	67%	8%	25%	201
Liberal	11%	6%	83%	114
Moderate	33%	7%	59%	201
Conservative	65%	6%	29%	153
Union household	30%	2%	68%	67
Non-union	39%	7%	54%	420
5 years or less in NH	35%	1%	64%	45
6 to 10 years	43%	6%	51%	36
11 to 20 years	36%	5%	60%	86
More than 20 years	39%	8%	53%	308
18 to 34	41%	8%	51%	56
35 to 49	48%	9%	43%	119
50 to 64	34%	5%	61%	191
65 and over	35%	6%	59%	101
Male	44%	4%	51%	247
Female	30%	9%	62%	264
High school or less	42%	7%	52%	113
Some college	36%	9%	55%	112
College graduate	43%	8%	49%	154
Post-graduate	27%	2%	71%	108
Less than \$30K	37%	7%	56%	48
\$30K to \$60K	44%	3%	53%	74
\$60K to \$75K	34%	4%	63%	53
\$75K to \$100K	46%	7%	46%	63
More than \$100K	39%	6%	54%	122
Married	37%	5%	59%	321
Divorced/separated	35%	11%	53%	91
Never married	41%	9%	50%	75
Protestant	42%	6%	52%	173
Catholic	44%	5%	51%	168
Other	26%	9%	65%	121
Attend services 1 or more/week	37%	7%	57%	126
1-2 times a month	46%	7%	47%	59
Less often	43%	4%	54%	142
Never	33%	9%	58%	147
North Country	29%	14%	58%	47
Central/Lakes	38%	3%	58%	85
Connecticut Valley	34%	5%	61%	71
Mass Border	39%	6%	55%	153
Seacoast	36%	7%	57%	80
Manchester Area	39%	7%	54%	75
1st Cong. District	39%	7%	54%	256
2nd Cong. District	35%	6%	59%	255

How Long Keep Troops in Iraq?

	<u>Stay Until</u> <u>Stable</u> 42%	<u>Withdraw</u> <u>w/in 2 Yrs</u> 49%	<u>Don't</u> <u>Know</u> 9%	<u>(N=)</u> 514
STATEWIDE				
Registered Democrat	23%	70%	7%	126
Undeclared	42%	49%	8%	200
Registered Republican	62%	25%	12%	134
Not registered	36%	54%	9%	50
Democrat	22%	71%	7%	203
Independent	32%	49%	19%	78
Republican	69%	26%	6%	203
Liberal	18%	76%	6%	115
Moderate	40%	49%	11%	201
Conservative	65%	29%	7%	155
Union household	36%	58%	6%	69
Non-union	44%	47%	9%	421
5 years or less in NH	25%	53%	22%	46
6 to 10 years	60%	31%	10%	36
11 to 20 years	44%	54%	2%	86
More than 20 years	44%	48%	8%	310
18 to 34	32%	57%	11%	58
35 to 49	43%	45%	11%	117
50 to 64	45%	50%	6%	194
65 and over	46%	45%	10%	101
Male	51%	41%	7%	248
Female	34%	56%	11%	267
High school or less	42%	48%	10%	111
Some college	46%	45%	9%	113
College graduate	42%	50%	7%	156
Post-graduate	42%	50%	8%	110
Less than \$30K	35%	52%	13%	48
\$30K to \$60K	37%	54%	9%	74
\$60K to \$75K	35%	49%	16%	52
\$75K to \$100K	53%	42%	6%	64
More than \$100K	47%	48%	5%	121
Married	43%	48%	8%	324
Divorced/separated	44%	45%	12%	91
Never married	40%	55%	6%	75
Protestant	48%	43%	8%	174
Catholic	46%	45%	8%	171
Other	31%	59%	10%	121
Attend services 1 or more/week	47%	43%	10%	128
1-2 times a month	57%	31%	12%	59
Less often	42%	51%	7%	144
Never	35%	58%	8%	147
North Country	47%	47%	6%	47
Central/Lakes	36%	59%	6%	86
Connecticut Valley	36%	55%	10%	73
Mass Border	44%	48%	8%	156
Seacoast	42%	43%	15%	80
Manchester Area	50%	40%	10%	73
1st Cong. District	45%	46%	10%	255
2nd Cong. District	40%	52%	8%	259

Be Upset if Troops Removed from Iraq / Kept in Iraq More than 2 Years?

	<u>Upset if Removed</u> 24%	<u>Not Upset if Removed</u> 18%	<u>Don't Know</u> 9%	<u>Not Upset if Stay</u> 9%	<u>Upset if Stay</u> 40%	<u>(N=)</u> 514
STATEWIDE						
Registered Democrat	6%	17%	7%	8%	63%	126
Undeclared	24%	18%	8%	9%	40%	200
Registered Republican	45%	18%	12%	10%	16%	134
Not registered	13%	23%	9%	8%	47%	50
Democrat	8%	14%	7%	7%	64%	203
Independent	14%	18%	19%	8%	41%	78
Republican	46%	23%	6%	10%	16%	202
Liberal	5%	12%	6%	8%	69%	115
Moderate	23%	17%	11%	8%	41%	201
Conservative	41%	23%	7%	10%	18%	155
Union household	18%	18%	6%	7%	51%	69
Non-union	26%	19%	9%	9%	38%	421
5 years or less in NH	14%	11%	22%	14%	39%	46
6 to 10 years	26%	34%	10%	8%	22%	36
11 to 20 years	19%	25%	2%	8%	47%	86
More than 20 years	27%	17%	8%	8%	40%	310
18 to 34	12%	20%	11%	21%	36%	58
35 to 49	24%	19%	11%	7%	39%	117
50 to 64	24%	20%	6%	7%	43%	194
65 and over	31%	15%	10%	7%	38%	100
Male	30%	21%	7%	10%	31%	248
Female	18%	15%	11%	7%	48%	266
High school or less	28%	14%	10%	8%	39%	111
Some college	25%	21%	9%	7%	38%	113
College graduate	24%	18%	7%	12%	38%	156
Post-graduate	22%	20%	8%	6%	44%	110
Less than \$30K	17%	18%	13%	5%	47%	48
\$30K to \$60K	21%	17%	9%	11%	43%	74
\$60K to \$75K	21%	14%	16%	8%	42%	52
\$75K to \$100K	29%	24%	6%	6%	36%	64
More than \$100K	24%	23%	5%	10%	37%	121
Married	28%	16%	8%	7%	41%	324
Divorced/separated	22%	21%	12%	9%	36%	91
Never married	14%	26%	6%	13%	41%	75
Protestant	30%	19%	8%	8%	35%	174
Catholic	29%	18%	8%	9%	36%	171
Other	13%	18%	10%	9%	51%	121
Attend services 1 or more/week	28%	19%	10%	6%	37%	128
1-2 times a month	33%	24%	12%	6%	25%	59
Less often	27%	16%	7%	9%	42%	144
Never	16%	18%	8%	11%	47%	146
North Country	25%	22%	6%	3%	44%	47
Central/Lakes	22%	13%	6%	12%	47%	86
Connecticut Valley	17%	19%	10%	14%	40%	73
Mass Border	26%	17%	8%	11%	37%	155
Seacoast	26%	16%	15%	5%	38%	80
Manchester Area	26%	24%	10%	3%	37%	73
1st Cong. District	26%	19%	10%	5%	40%	255
2nd Cong. District	23%	17%	8%	12%	40%	258

Can US Win War in Iraq?

STATEWIDE	<u>Can Win</u> 38%	<u>Cannot Win</u> 52%	<u>Don't Know</u> 10%	<u>(N=)</u> 512
Registered Democrat	19%	71%	10%	126
Undeclared	36%	57%	7%	198
Registered Republican	60%	29%	11%	135
Not registered	36%	48%	16%	49
Democrat	17%	76%	7%	201
Independent	35%	54%	11%	78
Republican	64%	28%	8%	202
Liberal	14%	80%	6%	114
Moderate	36%	56%	8%	202
Conservative	64%	28%	8%	155
Union household	40%	57%	3%	65
Non-union	39%	51%	9%	423
5 years or less in NH	40%	58%	2%	46
6 to 10 years	42%	43%	15%	36
11 to 20 years	38%	53%	9%	87
More than 20 years	40%	53%	8%	308
18 to 34	43%	54%	3%	57
35 to 49	42%	50%	8%	119
50 to 64	34%	55%	10%	193
65 and over	46%	49%	5%	99
Male	48%	46%	7%	249
Female	30%	58%	13%	263
High school or less	47%	48%	5%	112
Some college	43%	46%	11%	112
College graduate	36%	55%	10%	155
Post-graduate	34%	59%	7%	109
Less than \$30K	45%	42%	13%	48
\$30K to \$60K	42%	51%	6%	74
\$60K to \$75K	32%	60%	8%	54
\$75K to \$100K	58%	38%	4%	65
More than \$100K	35%	57%	8%	121
Married	39%	53%	8%	323
Divorced/separated	38%	54%	8%	91
Never married	42%	46%	12%	75
Protestant	45%	44%	11%	175
Catholic	44%	51%	5%	168
Other	26%	67%	8%	122
Attend services 1 or more/week	41%	45%	13%	128
1-2 times a month	59%	35%	6%	58
Less often	40%	54%	7%	145
Never	31%	64%	6%	146
North Country	40%	47%	13%	47
Central/Lakes	31%	62%	8%	86
Connecticut Valley	37%	51%	12%	72
Mass Border	41%	52%	7%	152
Seacoast	37%	53%	10%	79
Manchester Area	44%	44%	12%	75
1st Cong. District	39%	52%	9%	255
2nd Cong. District	37%	52%	11%	257