

# THE WMUR GRANITE STATE POLL

## THE UNIVERSITY OF NEW HAMPSHIRE SURVEY CENTER

May 4, 2010

### OBAMA STOPS SLIDE IN NH

By: Andrew E. Smith, Ph.D.  
 UNH Survey Center  
 603/862-2226  
[www.unh.edu/survey-center](http://www.unh.edu/survey-center)

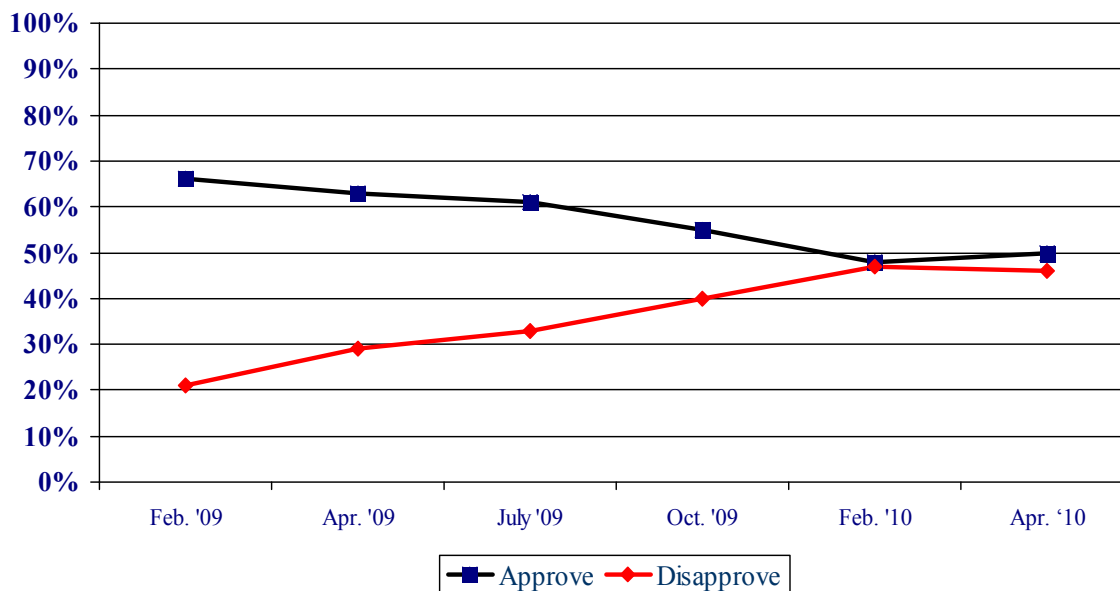
DURHAM, NH – President Barack Obama approval ratings in New Hampshire have stabilized after dropping since his inauguration. Support has increased among Democrats and independents since the passage of health care reform legislation.

These findings are based on the latest **WMUR Granite State Poll**,\* conducted by the University of New Hampshire Survey Center. Five hundred (512) randomly selected New Hampshire adults were interviewed by telephone between April 18 and April 28, 2010. The margin of sampling error for the survey is +/- 4.4 percent.

#### Presidential Approval

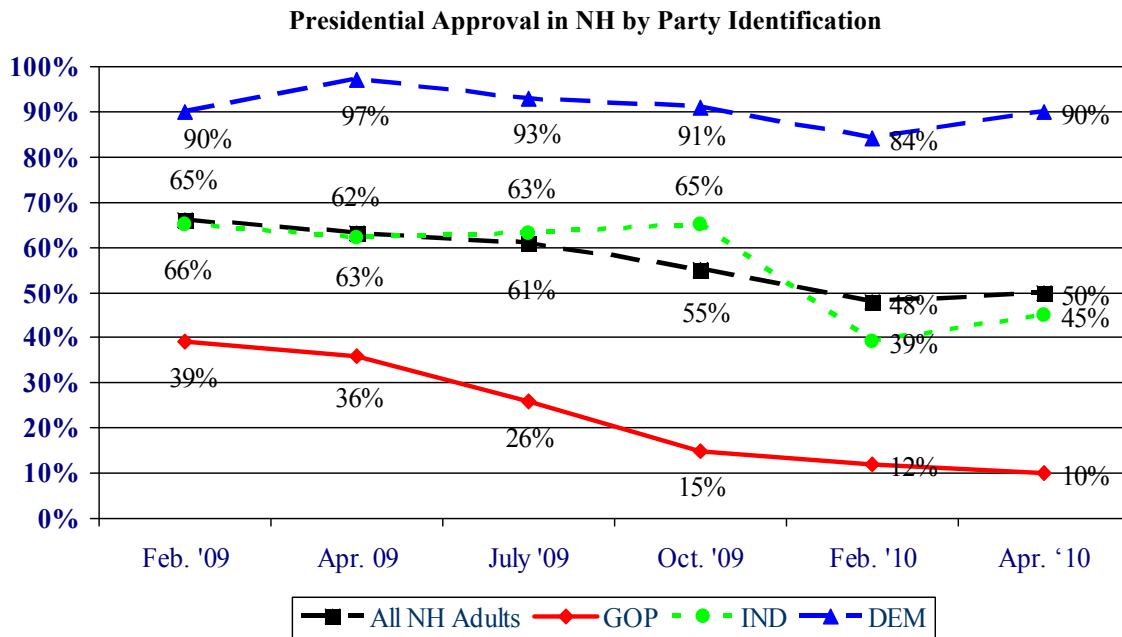
After declining in every Granite State Poll since his election, President Obama's approval ratings in New Hampshire have stabilized. In the most recent Granite State Poll, 50% of New Hampshire adults say they approve of the job Obama is doing as president, 46% disapprove, and 4% are neutral. These figures are similar to his national ratings, a Gallup poll taken during the same time period showed 49% of U.S. residents approved of the job Obama is doing as President.

#### Presidential Approval – Barack Obama



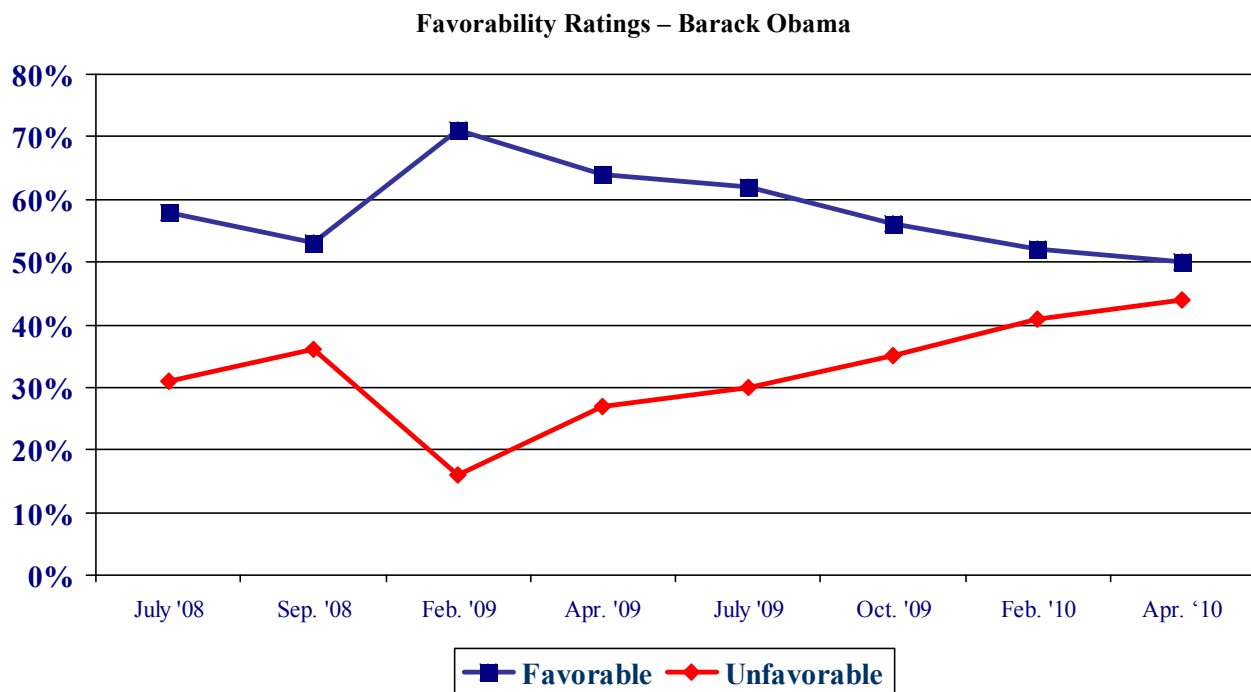
\* We ask that this copyrighted information be referred to as *the Granite State Poll*, sponsored by WMUR-TV, and conducted by the University of New Hampshire Survey Center.

Obama's approval rating has stabilized as support from Democrats and Independents has rebounded slightly since the passage of health care reform legislation. Currently, 45% of independents in New Hampshire say they approve of the job Obama is doing as President, up from 39% in February, but down 20 percentage points since October 2009. Support among self-identified Democrats has rebounded to October levels while Obama's job approval among Republicans continues to decline.



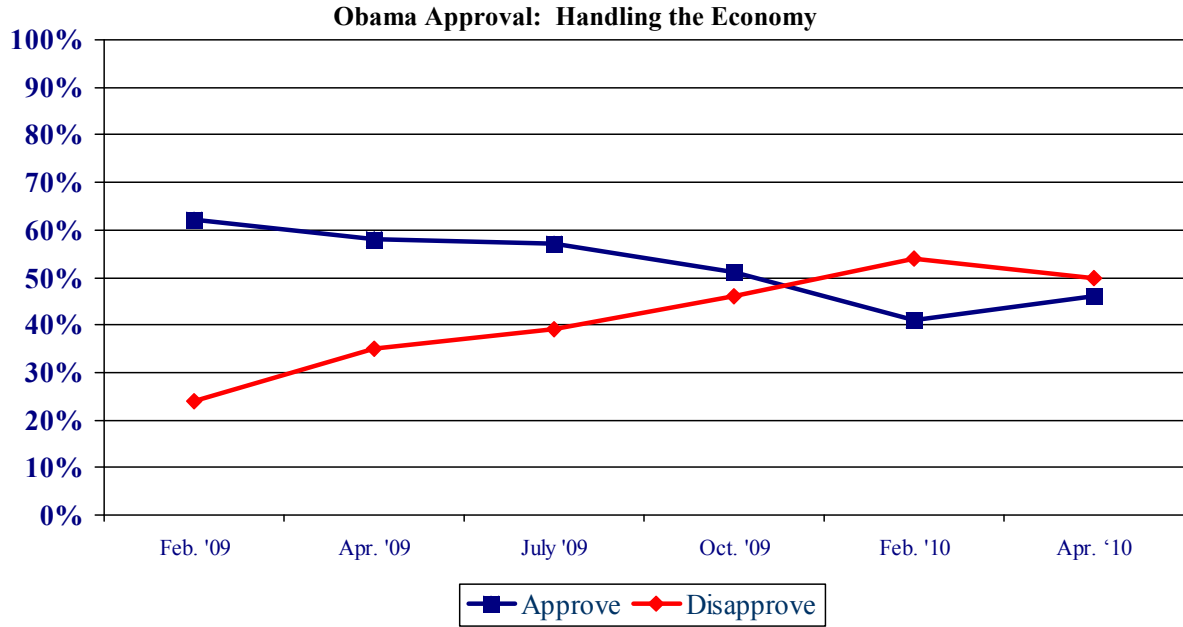
Obama's personal favorability ratings have continued to decline. Obama is currently viewed favorably by 50% of New Hampshire adults, 44% have an unfavorable opinion of him, and 4% are neutral. Obama's net favorability rating, the percentage having a favorable opinion minus the percentage having an unfavorable opinion, is +6%, the lowest since he became president.

Democrats continue to like Obama with 91% saying they have a favorable opinion of him, but only 42% of political independents and 12% of Republicans have a favorable opinion of the President.



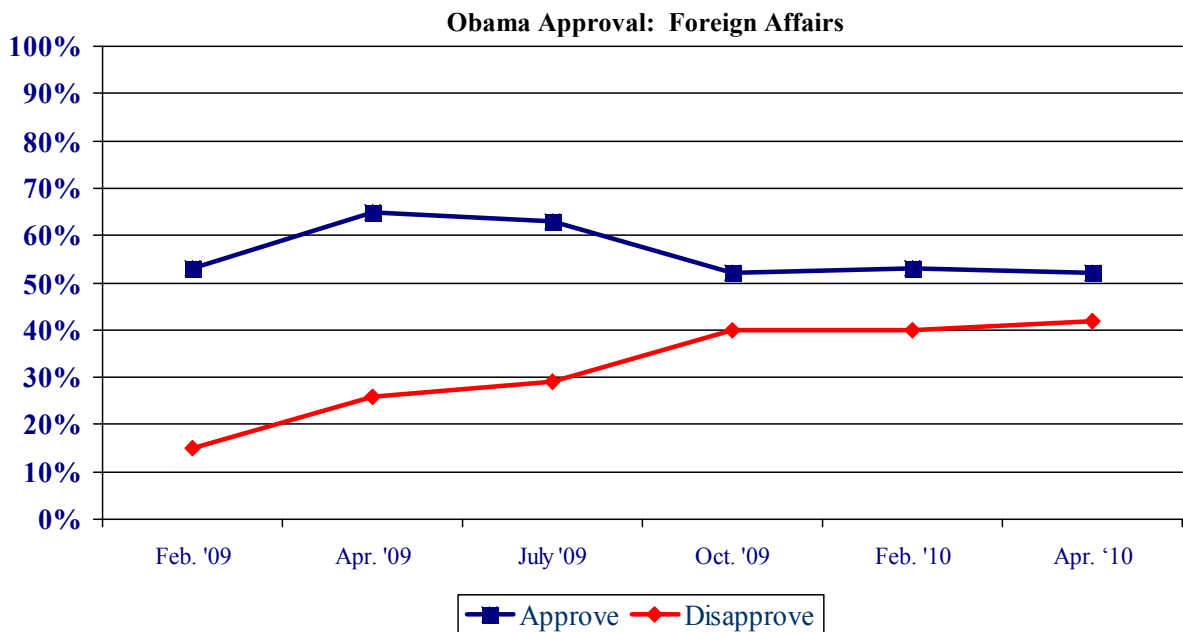
### Economic Approval Rating

The bad economy continues to be a drag on the Obama Administration. Despite modestly good news about economic improvements, most New Hampshire residents disapprove of how the administration is handling the economy. Currently, 46% of New Hampshire adults approve of how Obama is handling the economy, 50% disapprove, and 3% are neutral. As with other approval measures, there is a considerable partisan gap in approval of Obama's handling of the economy. Democrats (84%) approve of Obama's job handling of the economy while only 38% of independents and 11% of Republicans approve.



### Foreign Affairs

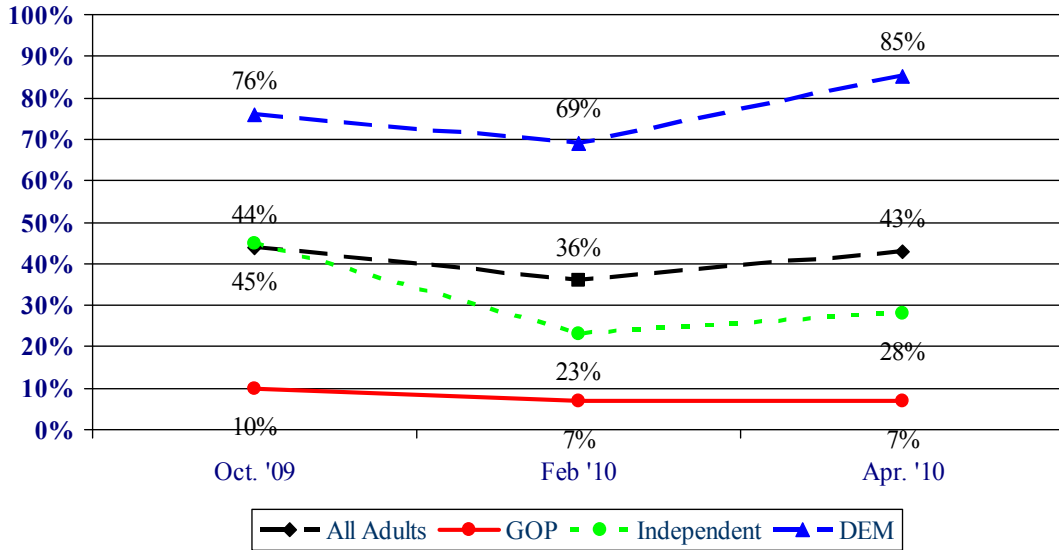
Support for Obama's handling of foreign affairs has remained steady since last fall. Currently, 52% approve of how Obama is handling foreign affairs, 42% disapprove, and 6% are neutral. There is also a partisan divide in approval of Obama's handling of foreign affairs with 86% of Democrats, but only 18% of Republicans approve. It is significant that approval among independents dropped from 61% in October to 48% in the most recent poll.



### Presidential Approval – Health Care Policy

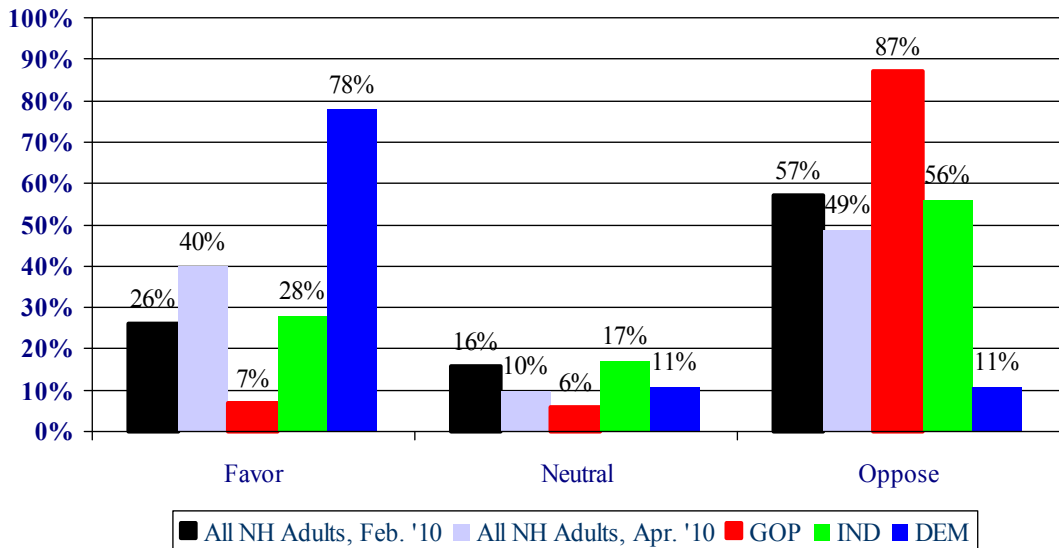
Approval of the administrations handling of health care has improved somewhat since the historic health care reform legislation passed in March, but most residents still disapprove. Currently, 43% of New Hampshire residents approve of Obama’s handling of health care policy, 52% disapprove, and 6% are neutral. Eighty-five percent of Democrats approve of his handling of health care policy, up from 69% in February, only 28% of political independents approve (up slightly from 23% in October), and 7% of Republicans approve.

**Presidential Approval in NH on Health Care by Party Identification**



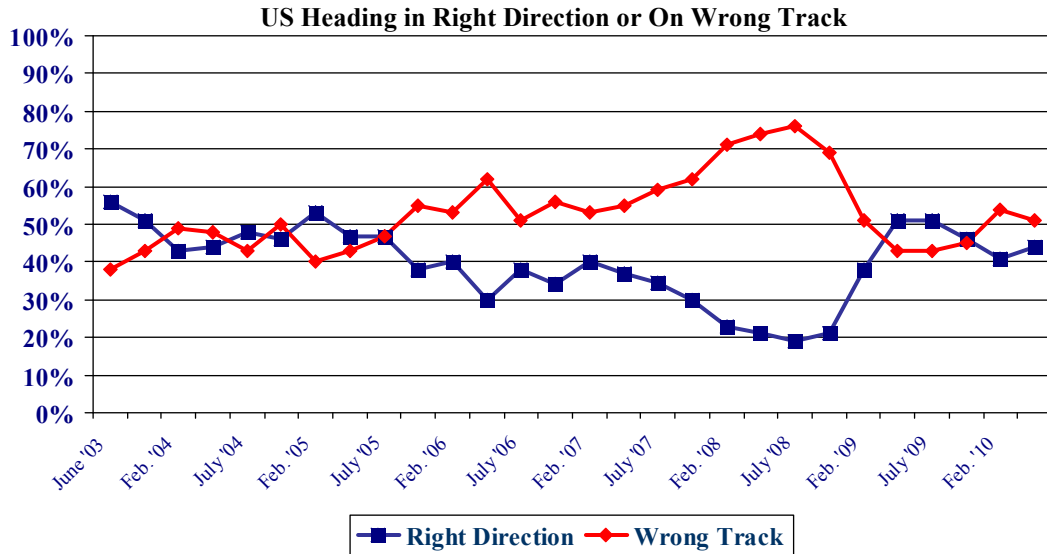
The health care reform legislation that is currently stalled in Congress is much more popular in New Hampshire now that it has passed than it was prior to passage, although most residents oppose the legislation. The improvement in support has come largely from Democrats. Currently, 40% say they favor the new law, 49% oppose, and 10% are neutral or don’t know enough about it to say. Support for the legislation has increased among Democrats, from 52% in February to 78% in April. Support among independents has also increased somewhat, from 19% in February to 28% in April.

**Favor / Oppose Health Care Reform Legislation by Party Identification**



### Right Direction – Wrong Track

Granite Staters remain pessimistic about the direction the country is heading. Currently, 44% of New Hampshire adults think things in this country are generally going in the right direction, 51% think things are seriously off on the wrong track, and 4% don't know. Democrats are the most optimistic about the county's direction with 78% thinking the US is headed in the right direction while only 35% of independents and 15% of Republicans think this is the case.



## Granite State Poll Methodology

These findings are based on the latest **WMUR Granite State Poll**, conducted by the University of New Hampshire Survey Center. Five hundred (512) randomly selected New Hampshire adults were interviewed by telephone between April 18 and April 28, 2010. The margin of sampling error for the survey is +/- 4.4 percent.

The data have been weighted to adjust for numbers of adults and telephone lines within households, respondent sex, and region of the state. In addition to potential sampling error, all surveys have other potential sources of non-sampling error including question order effects, question wording effects, and non-response.

### Presidential Approval

“GENERALLY SPEAKING, do you approve or disapprove of the way Barack Obama is handling his job as president?”

	<u>Approve</u>	<u>Neutral</u>	<u>Disapprove</u>	<u>(N)</u>
<b>Apr. '10</b>	<b>50%</b>	<b>4%</b>	<b>46%</b>	<b>(506)</b>
<b>Feb. '10</b>	48%	5%	47%	(495)
<b>Oct. '09</b>	55%	5%	40%	(503)
<b>July '09</b>	61%	6%	33%	(556)
<b>Apr. '09</b>	63%	8%	29%	(500)
<b>Feb. '09</b>	66%	14%	21%	(614)

### Favorability Rating – President Barack Obama

"Next, I'd like to get your overall opinion of some people who have been in the news. As I read each name, please say if you have a favorable or unfavorable opinion of this person - or if you don't know enough about him or her to say. President Barack Obama?"

	<u>Favorable</u>	<u>Neutral</u>	<u>Unfavorable</u>	<u>NET</u>	<u>(N=)</u>
<b>Apr. '10</b>	<b>50%</b>	<b>4%</b>	<b>44%</b>	<b>+6%</b>	<b>(510)</b>
<b>Feb. '10</b>	52%	6%	41%	+11%	(496)
<b>Oct. '09</b>	56%	8%	35%	+21%	(502)
<b>July '09</b>	62%	7%	30%	+32%	(557)
<b>Apr. '09</b>	64%	7%	27%	+37%	(503)
<b>Feb. '09</b>	71%	9%	16%	+55%	(619)
<b>Sep. '08</b>	53%	9%	36%	+17%	(522)
<b>July '08</b>	58%	10%	31%	+27%	(474)

### Presidential Approval – Economy

“GENERALLY SPEAKING, do you approve or disapprove of the way President Obama is handling THE ECONOMY?”

	<u>Approve</u>	<u>Neutral</u>	<u>Disapprove</u>	<u>(N)</u>
<b>Apr. '10</b>	<b>46%</b>	<b>3%</b>	<b>50%</b>	<b>(507)</b>
<b>Feb. '10</b>	41%	4%	54%	(493)
<b>Oct. '09</b>	51%	3%	46%	(500)
<b>July '09</b>	57%	4%	39%	(556)
<b>Apr. '09</b>	58%	7%	35%	(499)
<b>Feb. '09</b>	62%	14%	24%	(614)

### Presidential Approval - Foreign Affairs

“GENERALLY SPEAKING, do you approve or disapprove of the way President Obama is handling FOREIGN AFFAIRS?”

	<u>Approve</u>	<u>Neutral</u>	<u>Disapprove</u>	<u>(N)</u>
<b>Apr. '10</b>	<b>52%</b>	<b>6%</b>	<b>42%</b>	<b>(504)</b>
<b>Feb. '10</b>	53%	7%	40%	(494)
<b>Oct. '09</b>	52%	8%	40%	(499)
<b>July '09</b>	63%	9%	29%	(552)
<b>Apr. '09</b>	65%	8%	26%	(496)
<b>Feb. '09</b>	53%	32%	15%	(607)

### Presidential Approval on Health Care

“Do you approve or disapprove of the way Barack Obama is handling health care policy?”

	<u>Approve</u>	<u>Neutral</u>	<u>Disapprove</u>	<u>(N)</u>
<b>Apr. '10</b>	<b>43%</b>	<b>6%</b>	<b>52%</b>	<b>(506)</b>
<b>Feb. '10</b>	36%	5%	58%	(493)
<b>Oct. '09</b>	44%	7%	49%	(499)

### Favor / Oppose Health Care Reform Legislation Passed in Congress

“Let me ask you a question about healthcare. The U.S. House and Senate have just passed legislation that will overhaul the nation’s health care system. Based on what you have seen or heard, do you favor or oppose the health care legislation that was passed in Congress, or don’t you have an opinion?”

(ASKED IN FEB '10) “Let me ask you a question about healthcare. The U.S. House and Senate have just passed legislation that would overhaul the nation’s health care system. Based on what you have seen or heard, do you favor or oppose the health care legislation that is going through Congress, or don’t you have an opinion?”

	<u>Favor</u>	<u>Neutral</u>	<u>Oppose</u>	<u>(N)</u>
<b>Apr. '10</b>	<b>40%</b>	<b>10%</b>	<b>49%</b>	<b>(512)</b>
<b>Feb. '10</b>	26%	16%	57%	(498)

## Right Track - Wrong Track

“Do you think things in this country are generally going in the right direction or are they seriously off on the wrong track?”

	<b><u>Right</u></b> <b><u>Direction</u></b>	<b><u>Wrong</u></b> <b><u>Track</u></b>	<b><u>Don't</u></b> <b><u>Know</u></b>	<b><u>(N=)</u></b>
<b>Apr. '10</b>	<b>44%</b>	<b>51%</b>	<b>4%</b>	<b>(502)</b>
<b>Feb. '10</b>	41%	54%	5%	(484)
<b>Oct. '09</b>	46%	45%	9%	(496)
<b>July '09</b>	51%	43%	5%	(555)
<b>Apr. '09</b>	51%	43%	7%	(498)
<b>Feb. '09</b>	38%	51%	11%	(610)
<b>Sep. '08</b>	21%	69%	10%	(540)
<b>July '08</b>	19%	73%	8%	(508)
<b>Apr. '08</b>	21%	74%	5%	(487)
<b>Feb. '08</b>	23%	71%	7%	(553)
<b>Sep. '07</b>	30%	62%	8%	(505)
<b>July '07</b>	34%	59%	6%	(523)
<b>Apr. '07</b>	37%	55%	8%	(510)
<b>Feb. '07</b>	40%	53%	7%	(516)
<b>Sept. '06</b>	34%	56%	10%	(510)
<b>July '06</b>	38%	51%	11%	(496)
<b>Apr. '06</b>	30%	62%	8%	(501)
<b>Feb. '06</b>	40%	53%	7%	(487)
<b>Oct. '05</b>	38%	55%	7%	(498)
<b>July '05</b>	47%	47%	6%	(492)
<b>Apr. '05</b>	46%	43%	11%	(487)
<b>Feb. '05</b>	53%	40%	7%	(535)
<b>Oct. '04</b>	46%	50%	4%	(574)
<b>July '04</b>	48%	43%	10%	(500)
<b>Apr. '04</b>	44%	48%	8%	(535)
<b>Feb. '04</b>	43%	49%	8%	(503)
<b>Oct. '03</b>	51%	43%	6%	(487)
<b>June '03</b>	56%	38%	5%	(511)



**Presidential Approval Rating - Overall**

<b>STATEWIDE</b>	<b><u>Approve</u></b> <b>50%</b>	<b><u>Neutral</u></b> <b>4%</b>	<b><u>Disapprove</u></b> <b>46%</b>	<b><u>(N=)</u></b> <b>506</b>
Registered Democrat	86%	4%	9%	124
Registered Undeclared	51%	4%	45%	210
Registered Republican	13%	4%	83%	134
Democrat	90%	3%	7%	208
Independent	45%	8%	47%	87
Republican	10%	4%	86%	204
Liberal	92%	3%	5%	106
Moderate	58%	4%	38%	200
Conservative	13%	5%	82%	176
McCain/Palin Voter	8%	4%	88%	204
Obama/Biden Voter	88%	5%	7%	237
Other	25%	0%	75%	23
Did Not Vote in 2008	47%	2%	51%	30
Union household	46%	4%	50%	67
Non-union	50%	4%	45%	433
10 yrs or less in NH	49%	9%	42%	107
11 to 20 years	41%	3%	56%	66
More than 20 years	52%	3%	45%	319
18 to 34	50%	11%	39%	44
35 to 49	53%	5%	43%	122
50 to 64	51%	3%	46%	191
65 and over	49%	3%	48%	127
Male	42%	3%	55%	244
Female	57%	5%	38%	262
High school or less	41%	7%	52%	95
Some college	40%	6%	54%	105
College graduate	56%	3%	41%	185
Post-graduate	56%	3%	41%	115
Less than \$30K	52%	6%	42%	29
\$30K to \$60K	52%	5%	43%	73
\$60K to \$75K	62%	3%	35%	57
\$75K to \$100K	41%	6%	52%	68
\$100K or more	60%	2%	38%	125
Married	47%	5%	48%	368
Divorced/separated	55%	3%	42%	91
Never married	61%	4%	35%	42
Protestant	45%	5%	50%	189
Catholic	49%	3%	48%	170
Other	60%	3%	37%	128
Attend services 1 or more/week	38%	4%	58%	115
1-2 times a month	56%	4%	40%	54
Less often	56%	3%	41%	144
Never	52%	4%	44%	179
North Country	50%	4%	46%	31
Central / Lakes	49%	6%	45%	87
Connecticut Valley	56%	3%	41%	85
Mass Border	53%	3%	44%	139
Seacoast	40%	4%	56%	75
Manchester Area	47%	6%	47%	88
First Cong. Dist	45%	5%	50%	257
Second Cong. Dist	55%	3%	42%	247

**Presidential Approval Rating - Economy**

<b>STATEWIDE</b>	<b><u>Approve</u></b> <b>46%</b>	<b><u>Neutral</u></b> <b>3%</b>	<b><u>Disapprove</u></b> <b>50%</b>	<b><u>(N=)</u></b> <b>507</b>
Registered Democrat	84%	2%	14%	124
Registered Undeclared	47%	4%	49%	210
Registered Republican	12%	2%	86%	134
Democrat	84%	3%	13%	208
Independent	38%	6%	56%	87
Republican	11%	2%	87%	204
Liberal	86%	3%	12%	106
Moderate	54%	3%	43%	201
Conservative	13%	3%	84%	177
McCain/Palin Voter	9%	2%	89%	205
Obama/Biden Voter	83%	4%	13%	237
Other	18%	6%	75%	23
Did Not Vote in 2008	36%	7%	57%	30
Union household	43%	4%	52%	67
Non-union	47%	3%	50%	434
10 yrs or less in NH	50%	4%	46%	107
11 to 20 years	37%	4%	59%	66
More than 20 years	48%	3%	49%	320
18 to 34	40%	7%	53%	44
35 to 49	52%	2%	46%	123
50 to 64	48%	4%	48%	191
65 and over	45%	3%	52%	127
Male	40%	3%	57%	244
Female	53%	3%	44%	263
High school or less	37%	6%	58%	95
Some college	38%	6%	56%	106
College graduate	55%	1%	44%	185
Post-graduate	50%	2%	48%	116
Less than \$30K	39%	10%	51%	30
\$30K to \$60K	49%	3%	49%	73
\$60K to \$75K	58%	2%	40%	57
\$75K to \$100K	42%	1%	56%	68
\$100K or more	56%	3%	41%	125
Married	45%	2%	53%	368
Divorced/separated	50%	6%	44%	91
Never married	49%	10%	41%	42
Protestant	44%	2%	54%	190
Catholic	41%	4%	55%	170
Other	60%	3%	37%	128
Attend services 1 or more/week	37%	3%	60%	115
1-2 times a month	51%	8%	41%	54
Less often	53%	2%	46%	145
Never	47%	3%	50%	180
North Country	38%	4%	58%	31
Central / Lakes	41%	9%	50%	88
Connecticut Valley	55%	1%	45%	85
Mass Border	50%	1%	48%	140
Seacoast	37%	3%	60%	75
Manchester Area	49%	4%	48%	88
First Cong. Dist	42%	5%	53%	257
Second Cong. Dist	51%	2%	47%	249

**Presidential Approval Rating - Foreign Affairs**

<b>STATEWIDE</b>	<b><u>Approve</u></b> <b>52%</b>	<b><u>Neutral</u></b> <b>6%</b>	<b><u>Disapprove</u></b> <b>42%</b>	<b><u>(N=)</u></b> <b>504</b>
Registered Democrat	85%	5%	10%	124
Registered Undeclared	53%	3%	45%	209
Registered Republican	20%	8%	72%	132
Democrat	86%	6%	7%	208
Independent	48%	3%	49%	84
Republican	18%	6%	76%	204
Liberal	91%	4%	5%	104
Moderate	61%	6%	32%	199
Conservative	17%	6%	77%	177
McCain/Palin Voter	16%	5%	79%	202
Obama/Biden Voter	85%	6%	9%	237
Other	28%	0%	72%	25
Did Not Vote in 2008	43%	14%	42%	27
Union household	55%	1%	44%	67
Non-union	52%	6%	42%	431
10 yrs or less in NH	53%	7%	40%	107
11 to 20 years	43%	6%	51%	65
More than 20 years	54%	5%	40%	317
18 to 34	51%	8%	41%	44
35 to 49	57%	5%	37%	125
50 to 64	53%	4%	43%	187
65 and over	49%	8%	43%	126
Male	44%	5%	51%	245
Female	59%	6%	35%	260
High school or less	40%	7%	53%	94
Some college	45%	8%	47%	106
College graduate	59%	5%	37%	183
Post-graduate	58%	3%	39%	115
Less than \$30K	48%	15%	37%	30
\$30K to \$60K	51%	7%	41%	71
\$60K to \$75K	62%	9%	29%	56
\$75K to \$100K	50%	7%	43%	68
\$100K or more	65%	1%	34%	123
Married	51%	4%	45%	366
Divorced/separated	52%	9%	39%	90
Never married	65%	9%	26%	42
Protestant	47%	8%	45%	189
Catholic	52%	4%	44%	170
Other	62%	3%	35%	126
Attend services 1 or more/week	40%	8%	52%	113
1-2 times a month	60%	4%	36%	55
Less often	57%	6%	38%	143
Never	55%	3%	42%	179
North Country	48%	4%	49%	31
Central / Lakes	51%	8%	41%	88
Connecticut Valley	60%	6%	35%	83
Mass Border	54%	6%	41%	142
Seacoast	40%	7%	53%	74
Manchester Area	55%	2%	43%	87
First Cong. Dist	48%	6%	46%	254
Second Cong. Dist	56%	5%	39%	249

**Presidential Approval Rating - Health Care**

<b>STATEWIDE</b>	<b><u>Approve</u></b> <b>43%</b>	<b><u>Neutral</u></b> <b>6%</b>	<b><u>Disapprove</u></b> <b>52%</b>	<b><u>(N=)</u></b> <b>506</b>
Registered Democrat	81%	4%	14%	124
Registered Undeclared	43%	6%	51%	207
Registered Republican	9%	4%	87%	133
Democrat	85%	5%	10%	205
Independent	28%	10%	62%	87
Republican	7%	4%	90%	206
Liberal	86%	4%	11%	106
Moderate	50%	6%	44%	197
Conservative	9%	6%	86%	179
McCain/Palin Voter	6%	3%	91%	204
Obama/Biden Voter	79%	7%	14%	234
Other	21%	0%	79%	25
Did Not Vote in 2008	30%	9%	61%	30
Union household	45%	6%	49%	66
Non-union	42%	5%	52%	435
10 yrs or less in NH	42%	5%	53%	105
11 to 20 years	38%	5%	57%	68
More than 20 years	45%	6%	49%	318
18 to 34	31%	7%	62%	44
35 to 49	46%	6%	48%	125
50 to 64	46%	2%	52%	188
65 and over	42%	9%	49%	127
Male	36%	4%	60%	245
Female	49%	7%	44%	261
High school or less	27%	10%	63%	94
Some college	36%	6%	58%	108
College graduate	50%	3%	47%	183
Post-graduate	50%	6%	44%	114
Less than \$30K	46%	10%	44%	30
\$30K to \$60K	47%	6%	46%	72
\$60K to \$75K	55%	7%	37%	55
\$75K to \$100K	38%	3%	58%	68
\$100K or more	50%	6%	44%	124
Married	41%	6%	54%	368
Divorced/separated	47%	4%	49%	91
Never married	53%	5%	42%	42
Protestant	39%	5%	56%	189
Catholic	39%	8%	53%	170
Other	53%	3%	44%	128
Attend services 1 or more/week	36%	4%	60%	114
1-2 times a month	50%	7%	43%	56
Less often	46%	6%	48%	143
Never	43%	5%	52%	179
North Country	51%	4%	46%	31
Central / Lakes	41%	7%	52%	87
Connecticut Valley	54%	4%	42%	82
Mass Border	46%	5%	49%	141
Seacoast	29%	6%	65%	75
Manchester Area	37%	8%	55%	88
First Cong. Dist	36%	7%	57%	257
Second Cong. Dist	50%	4%	46%	247

**Favor / Oppose Health Care Legislation Passed in Congress**

<b>STATEWIDE</b>	<b><u>Favor</u> 40%</b>	<b><u>Neutral/DK</u> 10%</b>	<b><u>Oppose</u> 49%</b>	<b><u>(N=)</u> 512</b>
Registered Democrat	76%	11%	13%	124
Registered Undeclared	39%	12%	49%	211
Registered Republican	10%	4%	85%	134
Democrat	78%	11%	11%	209
Independent	28%	17%	56%	87
Republican	7%	6%	87%	207
Liberal	80%	7%	13%	106
Moderate	47%	14%	39%	202
Conservative	9%	7%	85%	179
McCain/Palin Voter	8%	4%	88%	205
Obama/Biden Voter	72%	14%	14%	239
Other	18%	9%	73%	25
Did Not Vote in 2008	32%	20%	48%	31
Union household	42%	10%	49%	67
Non-union	40%	10%	50%	439
10 yrs or less in NH	39%	8%	53%	107
11 to 20 years	38%	8%	54%	69
More than 20 years	42%	12%	47%	321
18 to 34	38%	8%	53%	45
35 to 49	43%	12%	45%	126
50 to 64	41%	7%	52%	191
65 and over	40%	14%	46%	127
Male	35%	8%	57%	248
Female	45%	12%	42%	264
High school or less	25%	17%	58%	95
Some college	33%	9%	58%	111
College graduate	48%	8%	44%	185
Post-graduate	48%	10%	42%	116
Less than \$30K	40%	21%	39%	31
\$30K to \$60K	44%	13%	42%	74
\$60K to \$75K	51%	13%	36%	57
\$75K to \$100K	38%	4%	58%	68
\$100K or more	46%	9%	44%	125
Married	38%	9%	53%	373
Divorced/separated	44%	12%	44%	91
Never married	50%	19%	31%	42
Protestant	36%	11%	53%	192
Catholic	37%	10%	53%	172
Other	53%	9%	38%	129
Attend services 1 or more/week	34%	9%	58%	115
1-2 times a month	49%	11%	40%	56
Less often	42%	12%	46%	146
Never	41%	9%	49%	181
North Country	54%	7%	39%	31
Central / Lakes	41%	9%	50%	90
Connecticut Valley	44%	17%	39%	85
Mass Border	43%	10%	47%	142
Seacoast	28%	9%	63%	75
Manchester Area	36%	9%	55%	88
First Cong. Dist	35%	8%	57%	257
Second Cong. Dist	45%	13%	42%	253

**U.S. Right Direction / Wrong Track**

	<b><u>Right Direction</u></b> 44%	<b><u>Wrong Track</u></b> 51%	<b><u>Don't Know</u></b> 4%	<b><u>(N=)</u></b> 502
<b>STATEWIDE</b>				
Registered Democrat	79%	20%	1%	121
Registered Undeclared	42%	53%	6%	208
Registered Republican	18%	77%	5%	132
Democrat	78%	19%	3%	203
Independent	35%	61%	5%	87
Republican	15%	79%	6%	205
Liberal	82%	16%	3%	105
Moderate	51%	44%	5%	199
Conservative	14%	83%	4%	175
McCain/Palin Voter	14%	82%	4%	203
Obama/Biden Voter	74%	21%	5%	233
Other	8%	92%	0%	25
Did Not Vote in 2008	43%	48%	9%	30
Union household	47%	50%	3%	65
Non-union	44%	51%	5%	432
10 yrs or less in NH	37%	55%	8%	107
11 to 20 years	33%	63%	4%	68
More than 20 years	49%	47%	4%	312
18 to 34	37%	57%	6%	45
35 to 49	48%	47%	5%	124
50 to 64	43%	52%	5%	186
65 and over	48%	48%	4%	126
Male	38%	56%	6%	242
Female	50%	47%	3%	260
High school or less	41%	56%	3%	92
Some college	30%	65%	5%	107
College graduate	51%	46%	3%	181
Post-graduate	49%	44%	7%	116
Less than \$30K	44%	54%	2%	31
\$30K to \$60K	39%	54%	7%	72
\$60K to \$75K	60%	38%	2%	57
\$75K to \$100K	35%	61%	4%	67
\$100K or more	57%	37%	6%	121
Married	44%	51%	5%	368
Divorced/separated	44%	52%	4%	87
Never married	50%	49%	1%	42
Protestant	41%	57%	2%	190
Catholic	45%	49%	6%	170
Other	49%	45%	7%	127
Attend services 1 or more/week	36%	59%	5%	113
1-2 times a month	55%	45%	0%	56
Less often	48%	46%	7%	144
Never	43%	53%	4%	176
North Country	52%	46%	3%	31
Central / Lakes	44%	52%	4%	88
Connecticut Valley	48%	50%	2%	83
Mass Border	43%	52%	6%	139
Seacoast	35%	58%	8%	75
Manchester Area	48%	49%	3%	87
First Cong. Dist	40%	54%	6%	253
Second Cong. Dist	48%	49%	3%	248

**Favorability Rating - Barack Obama**

<b>STATEWIDE</b>	<b><u>Favorable</u></b> <b>50%</b>	<b><u>Neutral</u></b> <b>4%</b>	<b><u>Unfavorable</u></b> <b>44%</b>	<b><u>DK</u></b> <b>1%</b>	<b><u>(N)</u></b> <b>510</b>
Registered Democrat	88%	4%	7%	0%	124
Registered Undeclared	51%	4%	44%	2%	211
Registered Republican	16%	4%	80%	1%	132
Democrat	91%	2%	6%	0%	208
Independent	42%	7%	45%	5%	87
Republican	12%	3%	84%	1%	206
Liberal	89%	3%	7%	2%	106
Moderate	59%	4%	34%	2%	200
Conservative	15%	3%	80%	1%	179
McCain/Palin Voter	12%	3%	84%	1%	204
Obama/Biden Voter	87%	4%	7%	2%	237
Other	22%	3%	75%	0%	25
Did Not Vote in 2008	42%	3%	51%	4%	31
Union household	50%	1%	49%	0%	67
Non-union	51%	4%	44%	2%	437
10 yrs or less in NH	48%	6%	44%	2%	107
11 to 20 years	42%	3%	53%	2%	68
More than 20 years	54%	3%	42%	1%	320
18 to 34	52%	9%	39%	0%	45
35 to 49	52%	3%	43%	2%	126
50 to 64	51%	3%	44%	1%	190
65 and over	52%	3%	44%	2%	126
Male	42%	4%	53%	1%	248
Female	59%	4%	36%	1%	262
High school or less	43%	0%	54%	2%	95
Some college	43%	6%	50%	1%	111
College graduate	53%	4%	41%	2%	183
Post-graduate	60%	4%	37%	0%	115
Less than \$30K	54%	4%	41%	2%	31
\$30K to \$60K	53%	8%	37%	2%	74
\$60K to \$75K	63%	0%	37%	0%	57
\$75K to \$100K	41%	4%	52%	2%	68
\$100K or more	60%	3%	35%	1%	125
Married	48%	3%	47%	2%	372
Divorced/separated	57%	4%	38%	1%	90
Never married	63%	5%	32%	0%	42
Protestant	45%	5%	48%	2%	190
Catholic	50%	3%	46%	1%	172
Other	60%	2%	36%	1%	129
Attend services 1 or more/week	34%	5%	59%	1%	113
1-2 times a month	57%	3%	40%	0%	56
Less often	58%	4%	37%	0%	146
Never	53%	2%	42%	3%	181
North Country	53%	6%	42%	0%	31
Central / Lakes	57%	0%	42%	2%	89
Connecticut Valley	58%	1%	38%	3%	85
Mass Border	48%	6%	45%	1%	142
Seacoast	38%	5%	56%	1%	75
Manchester Area	51%	5%	44%	0%	88
First Cong. Dist	46%	4%	49%	0%	257
Second Cong. Dist	55%	3%	40%	2%	251