

# THE WMUR GRANITE STATE POLL

## THE UNIVERSITY OF NEW HAMPSHIRE SURVEY CENTER

August 13, 2012

### PRESIDENTIAL RACE REMAINS CLOSE IN NEW HAMPSHIRE

By: Andrew E. Smith, Ph.D.  
Chad S. Novak, M.A.  
UNH Survey Center  
603/862-2226  
[www.unh.edu/survey-center](http://www.unh.edu/survey-center)

DURHAM, NH – The presidential election in New Hampshire is unchanged in the past month with President Obama holding a slim lead over Mitt Romney.

These findings are based on the latest **WMUR Granite State Poll**,\* conducted by the University of New Hampshire Survey Center. Five hundred eighty-one (581) randomly selected New Hampshire adults were interviewed by landline and cellular telephone between August 1 and August 12, 2012. The margin of sampling error for the survey is +/- 4.1 percent. Included is a subsample of 555 likely general election voters (margin of sampling error +/- 4.2%).

#### 2012 Presidential Election

The race for New Hampshire's 4 electoral votes remains close. In a hypothetical race between President Barack Obama and former Massachusetts Governor Mitt Romney, 49% of likely New Hampshire voters say they will vote for Obama, 46% prefer Romney, 2% favor some other candidate, and 4% are undecided. These figures are essentially unchanged since the July Granite State Poll. However, Obama held a 9 percentage point lead over Romney in April. Most of the interviews in this poll were conducted before Wisconsin Congressman Paul Ryan was named as the Republican Vice Presidential candidate. "This race is likely to remain close until Election Day," said Andrew Smith, Director of the UNH Survey Center.

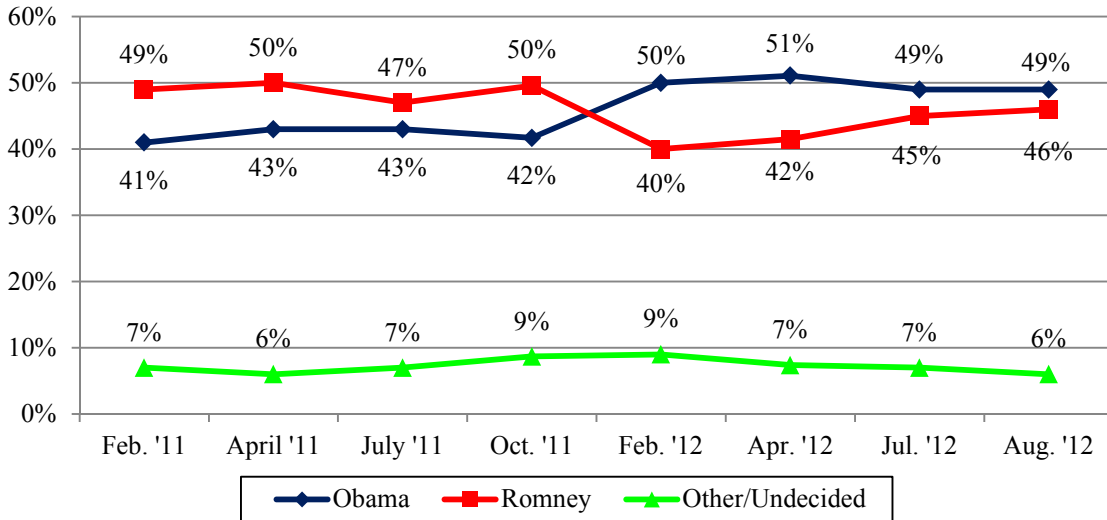
There is a gender gap that continues to favor Obama, but by a smaller margin than a month ago. Women prefer Obama over Romney by 16 percentage points while men favor Romney by 11 percentage points. In July, women preferred Obama over Romney by 14 percentage points while men favored Romney over Obama by only 6 percentage points. There is a large class difference among women -- Obama's strongest support comes from college educated women, where he holds a 26 percentage point lead but this lead disappears among working class women who favor Romney by 3 percentage points.

Both Obama and Romney have locked up their partisan bases. Obama currently has the support of 92% of New Hampshire Democrats while Romney has the support of 90% of Republicans. Independents remain split, 39% for Romney and 42% for Obama. And among those who say they have definitely decided who they will vote for, Obama leads with 53% to 46% for Romney.

---

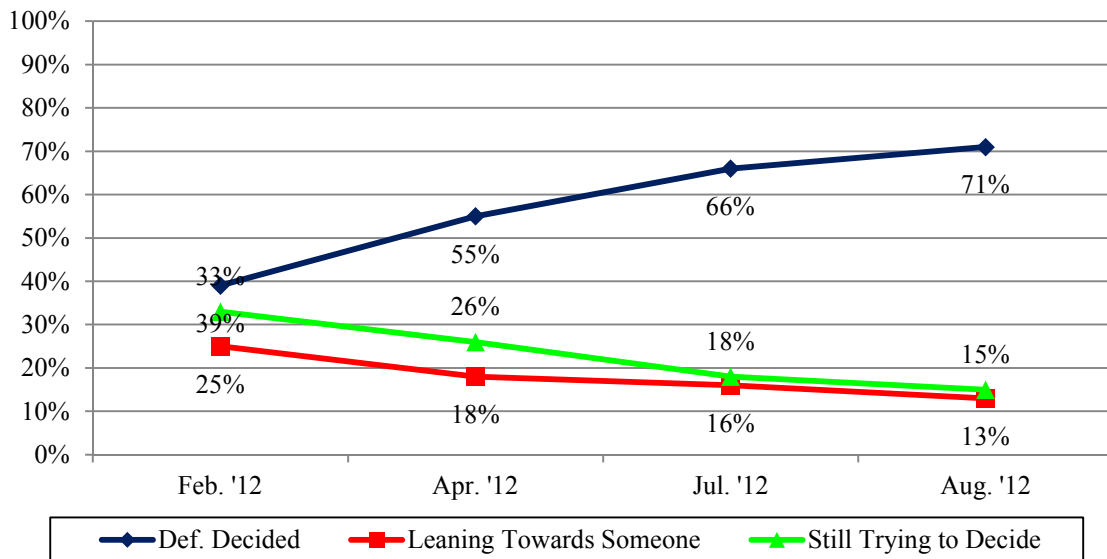
\* We ask that this copyrighted information be referred to as *the Granite State Poll*, sponsored by WMUR-TV, and conducted by the University of New Hampshire Survey Center.

**November 2012 General Election - Obama vs. Romney  
(Likely 2012 General Election Voters)**



New Hampshire voters are increasingly decided in their choice for president. Currently, 71% of likely New Hampshire voters say they have definitely decided who they will vote for in November, 13% are leaning towards a candidate, and 15% are still trying to decide. The percentage of those who say they have definitely decided who they will vote for has climbed 5 percentage points in the last month. By comparison, only 51% of likely New Hampshire voters said they had definitely decided who they were going to vote for in July, 2008.

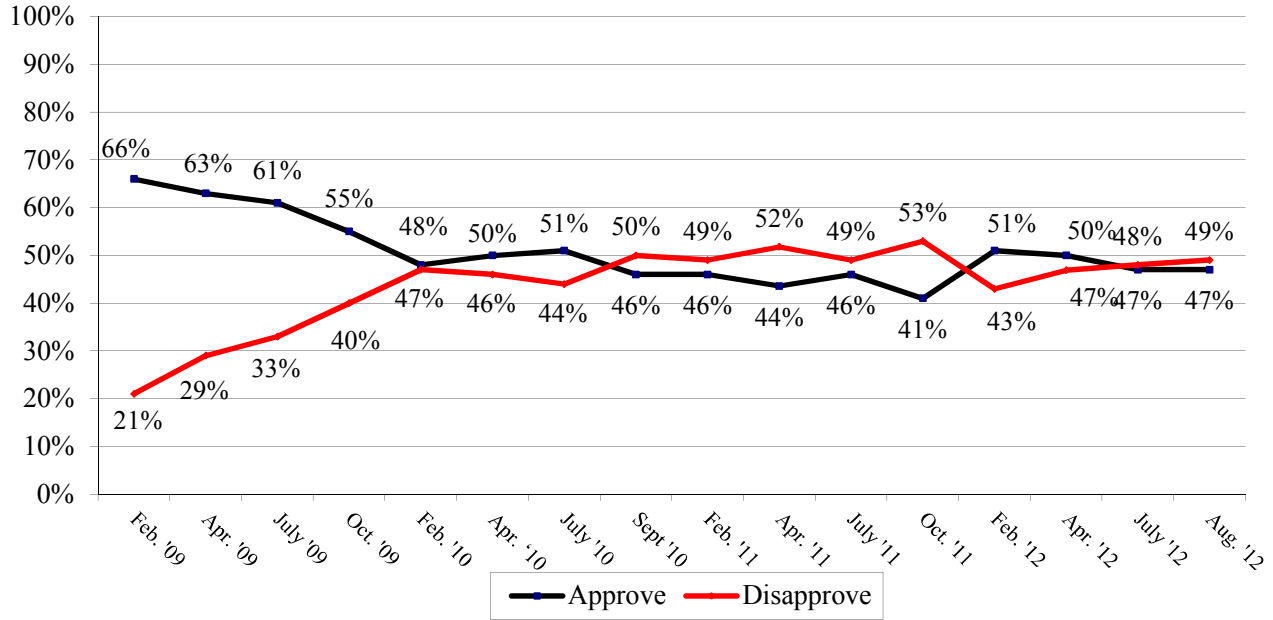
**Decided Presidential Vote  
(Likely 2012 General Election Voters)**



## Presidential Approval

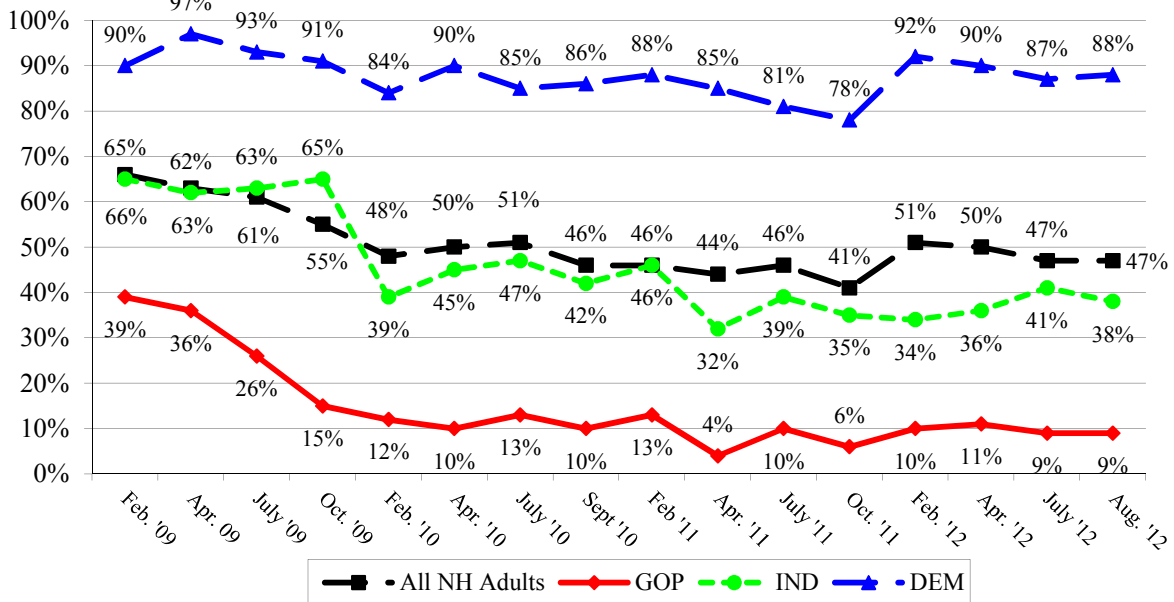
President Obama's job approval ratings in New Hampshire have declined very slightly in recent months. Currently, 47% of New Hampshire adults say they approve of the job Obama is doing as president, 49% disapprove, and 4% are neutral. By comparison, George W. Bush's New Hampshire approval rating in July 2004 stood at 46%.

### Presidential Approval in NH – Barack Obama



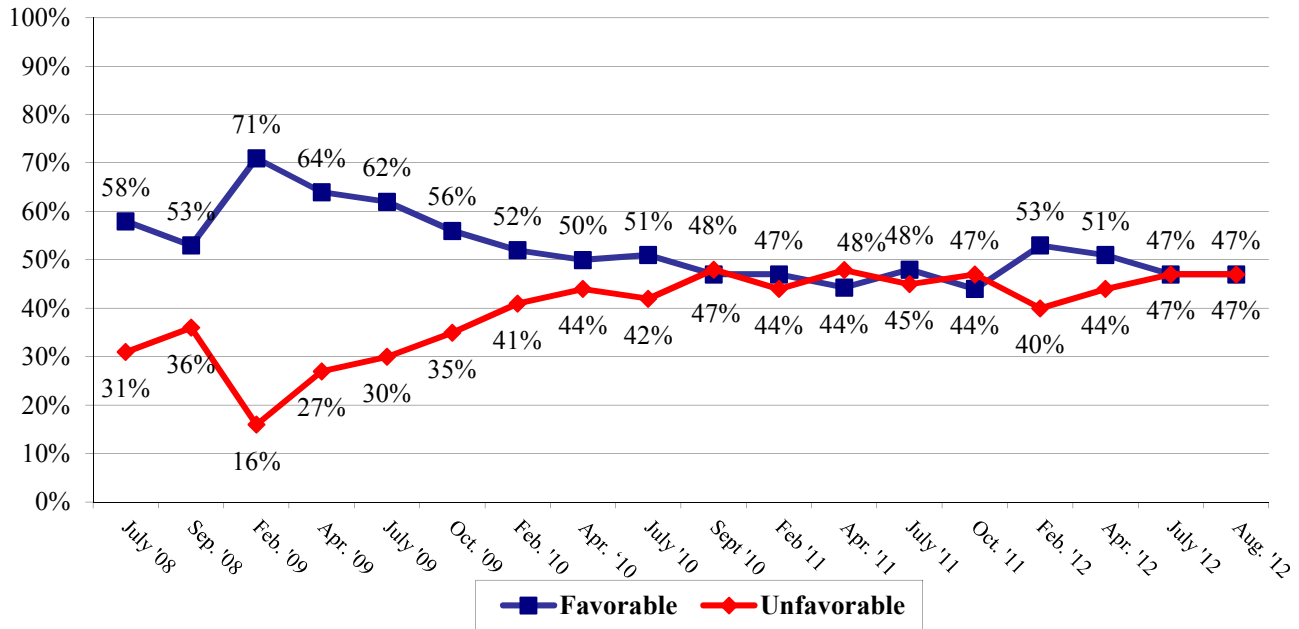
President Obama's job approval ratings have remained steady among different political groups. Nearly all Democrats (88%) approve of President Obama's job performance, while four in ten (38%) Independents continue to say they approve and only 9% of Republicans approve.

### Presidential Approval in NH by Party Identification (% Approve)



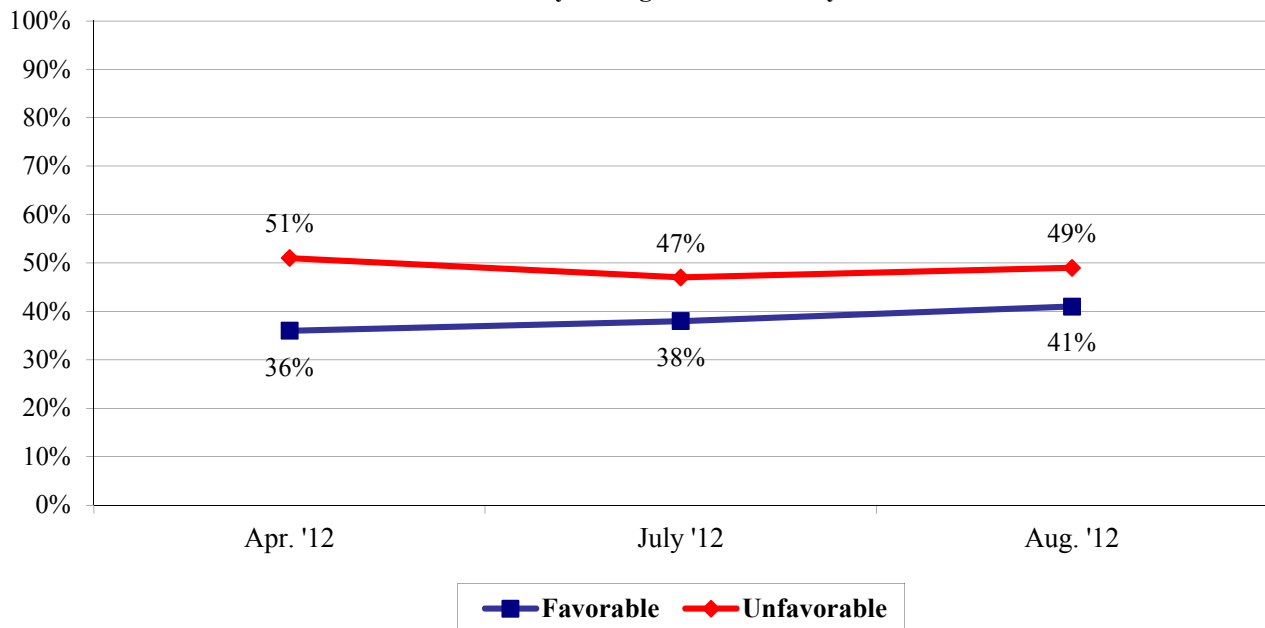
Obama's favorability ratings have remained unchanged since July. Obama is currently viewed favorably by 47% of New Hampshire adults, 47% have an unfavorable opinion of him, and 6% are neutral or don't know enough about him to say. Obama's net favorability rating, the percentage having a favorable opinion minus the percentage having an unfavorable opinion, is 0%, down from +7% in April. New Hampshire Democrats continue to like Obama (net favorability rating of +83%), while political independents (-19% net) and Republicans (-76% net) have unfavorable opinion of the President.

**Favorability Ratings – Barack Obama**



Mitt Romney remains less popular than President Obama in New Hampshire. Only 41% of Granite Staters have a favorable opinion of Romney, 49% have an unfavorable opinion of him, and 10% are neutral or don't know enough about him to say. His net favorability rating is -8%, essentially unchanged since July. Romney's net favorability rating has improved significantly among Republicans – it currently stands at +65%, up from +55% in July. He is still viewed unfavorably among Independents (-14% net) and Democrats (-78% net).

**Favorability Ratings – Mitt Romney**



## Granite State Poll Methodology

These findings are based on the latest WMUR Granite State Poll, conducted by the University of New Hampshire Survey Center. Five hundred eighty-one (581) randomly selected New Hampshire adults were interviewed by landline and cellular telephone between August 1 and August 12, 2012. The margin of sampling error for the survey is +/- 4.1 percent. Included is a subsample of 555 likely general election voters (margin of sampling error +/- 4.2%).

The data have been weighted to adjust for numbers of adults and telephone lines within households, respondent sex, and region of the state. In addition to potential sampling error, all surveys have other potential sources of non-sampling error including question order effects, question wording effects, and non-response.

### Presidential Approval

“GENERALLY SPEAKING, do you approve or disapprove of the way Barack Obama is handling his job as president?”

	<u>Approve</u>	<u>Neutral</u>	<u>Disapprove</u>	<u>(N)</u>
<b>Aug. '12</b>	<b>47%</b>	<b>4%</b>	<b>49%</b>	<b>(579)</b>
<b>July '12</b>	47%	5%	48%	(517)
<b>Apr. '12</b>	50%	3%	47%	(535)
<b>Feb. '12</b>	51%	6%	43%	(524)
<b>Oct. '11</b>	41%	6%	53%	(551)
<b>July '11</b>	46%	6%	49%	(512)
<b>Apr. '11</b>	44%	5%	52%	(502)
<b>Feb. '11</b>	46%	4%	49%	(519)
<b>Sept. '10</b>	46%	4%	50%	(514)
<b>July '10</b>	51%	5%	44%	(502)
<b>Apr. '10</b>	50%	4%	46%	(506)
<b>Feb. '10</b>	48%	5%	47%	(495)
<b>Oct. '09</b>	55%	5%	40%	(503)
<b>July '09</b>	61%	6%	33%	(556)
<b>Apr. '09</b>	63%	8%	29%	(500)
<b>Feb. '09</b>	66%	14%	21%	(614)

### Favorability Rating – President Barack Obama

"Next, I'd like to get your overall opinion of some people who have been in the news. As I read each name, please say if you have a favorable or unfavorable opinion of this person - or if you don't know enough about him or her to say. President Barack Obama?"

	<u>Favorable</u>	<u>Neutral/DK</u>	<u>Unfavorable</u>	<u>NET</u>	<u>(N=)</u>
<b>Aug. '12</b>	<b>47%</b>	<b>6%</b>	<b>47%</b>	<b>0%</b>	<b>(579)</b>
<b>July '12</b>	47%	7%	47%	0%	(520)
<b>Apr. '12</b>	51%	5%	44%	+7%	(532)
<b>Feb. '12</b>	53%	7%	40%	+13%	(527)
<b>Oct. '11</b>	44%	9%	47%	-3%	(553)
<b>July '11</b>	48%	6%	45%	+3%	(514)
<b>Apr. '11</b>	44%	8%	48%	-4%	(503)
<b>Feb. '11</b>	47%	8%	44%	3%	(515)
<b>Sept. '10</b>	47%	4%	48%	-1%	(515)
<b>July '10</b>	51%	5%	42%	+9%	(504)
<b>Apr. '10</b>	50%	4%	44%	+6%	(510)
<b>Feb. '10</b>	52%	6%	41%	+11%	(496)
<b>Oct. '09</b>	56%	8%	35%	+21%	(502)
<b>July '09</b>	62%	7%	30%	+32%	(557)
<b>Apr. '09</b>	64%	7%	27%	+37%	(503)
<b>Feb. '09</b>	71%	9%	16%	+55%	(619)
<b>Sep. '08</b>	53%	9%	36%	+17%	(522)
<b>July '08</b>	58%	10%	31%	+27%	(474)

**Favorability Rating – President Barack Obama  
(Among Likely Voters)**

"Next, I'd like to get your overall opinion of some people who have been in the news. As I read each name, please say if you have a favorable or unfavorable opinion of this person - or if you don't know enough about him or her to say. President Barack Obama?"

	<u>Favorable</u>	<u>Neutral/DK</u>	<u>Unfavorable</u>	<u>NET</u>	<u>(N=)</u>
<b>Aug. '12</b>	<b>48%</b>	<b>6%</b>	<b>47%</b>	<b>+1%</b>	<b>(553)</b>
<b>July '12</b>	47%	6%	47%	0%	(486)
<b>Apr. '12</b>	52%	4%	44%	+8%	(494)

**Favorability Rating – Mitt Romney**

"Next, I'd like to get your overall opinion of some people who have been in the news. As I read each name, please say if you have a favorable or unfavorable opinion of this person - or if you don't know enough about him or her to say. Former Massachusetts Governor Mitt Romney?"

	<u>Favorable</u>	<u>Neutral/DK</u>	<u>Unfavorable</u>	<u>NET</u>	<u>(N=)</u>
<b>Aug. '12</b>	<b>41%</b>	<b>10%</b>	<b>49%</b>	<b>-8%</b>	<b>(580)</b>
<b>July '12</b>	38%	14%	47%	-9%	(518)
<b>Apr. '12</b>	36%	12%	51%	-16%	(495)

**Favorability Rating – Mitt Romney  
(Among Likely Voters)**

"Next, I'd like to get your overall opinion of some people who have been in the news. As I read each name, please say if you have a favorable or unfavorable opinion of this person - or if you don't know enough about him or her to say. Former Massachusetts Governor Mitt Romney?"

	<u>Favorable</u>	<u>Neutral/DK</u>	<u>Unfavorable</u>	<u>NET</u>	<u>(N=)</u>
<b>Aug. '12</b>	<b>42%</b>	<b>10%</b>	<b>48%</b>	<b>-6%</b>	<b>(554)</b>
<b>July '12</b>	38%	14%	47%	-9%	(518)
<b>Apr. '12</b>	36%	12%	52%	-15%	(495)

**Decided 2012 Presidential Vote**

"I know that it is early, but have you definitely decided who you will vote for in the election for President in 2012 ... are you leaning toward someone ... or have you considered some candidates but are still trying to decide?"

	<u>Def. Decided Vote</u>	<u>Leaning Towards Someone</u>	<u>Still Trying To Decide</u>	<u>Don't Know</u>	<u>(N=)</u>
<b>Aug. '12</b>	<b>71%</b>	<b>13%</b>	<b>15%</b>	<b>1%</b>	<b>(554)</b>
<b>July '12</b>	66%	16%	18%	0%	(486)
<b>Apr. '12</b>	55%	18%	26%	1%	(497)
<b>Feb. '12</b>	39%	25%	33%	3%	(492)

**2012 Presidential Trial Heats  
(Likely 2012 Voters)**

**Obama v. Romney**

"Suppose the 2012 presidential election was being held today and the candidates were Mitt Romney, the Republican, and Barack Obama, the Democrat, who would you vote for?" [ROTATE CANDIDATES]

	<b><u>Barack Obama</u></b>	<b><u>Mitt Romney</u></b>	<b><u>Other</u></b>	<b><u>Undecided</u></b>	<b><u>(N=)</u></b>
<b>Aug. '12</b>	<b>49%</b>	<b>46%</b>	<b>2%</b>	<b>4%</b>	<b>(550)</b>
<b>July '12</b>	49%	45%	4%	3%	(470)
<b>Apr. '12</b>	51%	42%	2%	5%	(486)
<b>Feb. '12</b>	50%	40%	2%	9%	(483)
<b>Oct. '11</b>	42%	50%	2%	7%	(559)
<b>July '11</b>	43%	47%	2%	7%	(729)
<b>April '11</b>	43%	50%	2%	6%	(471)
<b>Feb. '11</b>	41%	49%	3%	7%	(712)

**Presidential Approval Rating - Overall**

<b>STATEWIDE</b>	<u><b>Approve</b></u> <b>47%</b>	<u><b>Neutral</b></u> <b>4%</b>	<u><b>Disapprove</b></u> <b>49%</b>	<u><b>(N=)</b></u> <b>579</b>
Registered Democrat	84%	1%	15%	159
Registered Undeclared	46%	4%	49%	232
Registered Republican	7%	4%	89%	142
Democrat	88%	4%	8%	240
Independent	38%	7%	54%	91
Republican	9%	3%	88%	232
Liberal	84%	3%	13%	140
Moderate	51%	6%	43%	215
Conservative	17%	2%	82%	178
Support Tea Party	9%	2%	89%	151
Neutral	40%	5%	56%	167
Oppose Tea Party	84%	4%	12%	215
McCain/Palin Voter	12%	1%	87%	223
Obama/Biden Voter	81%	4%	16%	266
Other	9%	8%	83%	21
Did Not Vote in 2008	41%	19%	40%	43
Read Union Leader	47%	5%	48%	153
Read Boston Globe	74%	1%	24%	85
Watch WMUR	44%	3%	53%	368
Listen to NHPR	64%	2%	34%	177
10 yrs or less in NH	48%	7%	45%	94
11 to 20 years	45%	5%	50%	86
More than 20 years	47%	3%	49%	380
18 to 34	55%	6%	39%	61
35 to 49	46%	2%	52%	103
50 to 64	46%	5%	49%	216
65 and over	49%	3%	48%	175
Working class men	38%	5%	57%	134
College educ men	48%	1%	51%	148
Working class women	38%	8%	54%	112
College educ women	59%	4%	38%	175
Male	42%	3%	55%	286
Female	51%	5%	44%	293
High school or less	38%	10%	52%	116
Some college	39%	3%	59%	130
College graduate	50%	2%	48%	189
Post graduate	59%	3%	38%	133
Less than \$30K	48%	8%	44%	71
\$30K to \$60K	51%	6%	43%	103
\$60K to \$75K	55%	0%	45%	39
\$75K to \$100K	52%	3%	46%	58
\$100K or more	52%	2%	46%	134
Attend services 1 or more/week	36%	4%	60%	150
1 2 times a month	31%	10%	59%	77
Less often	55%	3%	42%	151
Never	59%	3%	38%	172
North Country	60%	0%	40%	44
Central / Lakes	47%	5%	48%	100
Connecticut Valley	41%	9%	50%	87
Mass Border	43%	4%	53%	180
Seacoast	48%	4%	48%	98
Manchester Area	52%	0%	48%	70
First Cong. Dist	50%	2%	47%	269
Second Cong. Dist	44%	5%	51%	310



**Favorability Rating - Barack Obama**

<b>STATEWIDE</b>	<b><u>Favorable</u></b> <b>47%</b>	<b><u>Neutral</u></b> <b>5%</b>	<b><u>Unfavorable</u></b> <b>47%</b>	<b><u>DK</u></b> <b>1%</b>	<b><u>(N)</u></b> <b>579</b>
Registered Democrat	85%	1%	14%	0%	158
Registered Undeclared	45%	7%	47%	1%	233
Registered Republican	9%	5%	86%	0%	142
Democrat	89%	4%	6%	1%	239
Independent	35%	9%	54%	2%	91
Republican	9%	5%	85%	1%	232
Liberal	84%	4%	10%	2%	140
Moderate	50%	7%	43%	0%	214
Conservative	14%	4%	80%	1%	178
Likely 2012 voter	48%	5%	47%	1%	553
Non likely voter	30%	8%	57%	5%	26
Support Tea Party	7%	2%	91%	0%	151
Neutral	38%	6%	51%	4%	167
Oppose Tea Party	83%	6%	11%	0%	214
McCain/Palin Voter	9%	4%	87%	0%	223
Obama/Biden Voter	83%	5%	12%	0%	265
Other	16%	7%	77%	0%	21
Did Not Vote in 2008	39%	11%	36%	14%	43
Read Union Leader	46%	4%	47%	3%	153
Read Boston Globe	74%	5%	21%	0%	85
Watch WMUR	45%	5%	49%	1%	368
Listen to NHPR	65%	3%	31%	1%	176
10 yrs or less in NH	45%	5%	47%	3%	94
11 to 20 years	46%	9%	44%	1%	86
More than 20 years	48%	4%	47%	1%	379
18 to 34	53%	3%	40%	3%	61
35 to 49	43%	6%	52%	0%	103
50 to 64	47%	4%	47%	2%	215
65 and over	49%	7%	43%	0%	175
Working class men	41%	2%	56%	2%	134
College educ men	46%	7%	47%	0%	148
Working class women	39%	6%	51%	3%	112
College educ women	58%	5%	37%	0%	175
Male	43%	4%	52%	1%	286
Female	51%	6%	42%	2%	293
High school or less	41%	5%	50%	5%	116
Some college	39%	3%	58%	0%	130
College graduate	48%	5%	47%	0%	189
Post graduate	58%	8%	34%	0%	133
Less than \$30K	53%	8%	39%	1%	70
\$30K to \$60K	52%	8%	36%	4%	103
\$60K to \$75K	52%	2%	45%	0%	39
\$75K to \$100K	44%	7%	49%	0%	58
\$100K or more	54%	3%	43%	0%	134
Attend services 1 or more/week	33%	7%	59%	0%	150
1 2 times a month	29%	4%	62%	5%	77
Less often	54%	4%	41%	1%	150
Never	62%	5%	32%	0%	172
North Country	53%	4%	43%	0%	44
Central / Lakes	47%	6%	46%	1%	100
Connecticut Valley	47%	12%	41%	0%	87
Mass Border	42%	3%	53%	2%	180
Seacoast	48%	4%	47%	0%	98
Manchester Area	53%	3%	43%	1%	70
First Cong. Dist	49%	4%	46%	0%	269
Second Cong. Dist	45%	6%	48%	2%	310

**Favorability Rating – Mitt Romney**

<b>STATEWIDE</b>	<b><u>Favorable</u></b> <b>41%</b>	<b><u>Neutral</u></b> <b>7%</b>	<b><u>Unfavorable</u></b> <b>49%</b>	<b><u>DK</u></b> <b>3%</b>	<b><u>(N)</u></b> <b>580</b>
Registered Democrat	13%	4%	81%	2%	159
Registered Undeclared	39%	9%	49%	3%	233
Registered Republican	80%	8%	9%	3%	142
Democrat	7%	6%	85%	2%	240
Independent	39%	4%	53%	4%	91
Republican	76%	9%	11%	5%	232
Liberal	14%	8%	77%	2%	140
Moderate	38%	7%	51%	4%	215
Conservative	67%	7%	23%	2%	178
Likely 2012 voter	42%	7%	48%	3%	554
Non likely voter	14%	4%	79%	3%	26
Support Tea Party	77%	5%	17%	0%	151
Neutral	45%	9%	40%	6%	167
Oppose Tea Party	13%	5%	81%	1%	215
McCain/Palin Voter	81%	5%	11%	3%	223
Obama/Biden Voter	12%	9%	78%	1%	266
Other	42%	11%	41%	7%	21
Did Not Vote in 2008	15%	0%	73%	12%	43
Read Union Leader	42%	6%	47%	6%	153
Read Boston Globe	26%	6%	65%	3%	85
Watch WMUR	42%	7%	48%	3%	368
Listen to NHPR	30%	5%	62%	3%	177
10 yrs or less in NH	45%	2%	53%	0%	94
11 to 20 years	40%	14%	45%	1%	86
More than 20 years	40%	7%	49%	4%	380
18 to 34	25%	9%	61%	4%	61
35 to 49	39%	8%	49%	3%	103
50 to 64	43%	4%	50%	3%	216
65 and over	42%	9%	46%	3%	175
Working class men	42%	4%	48%	5%	134
College educ men	46%	9%	45%	0%	148
Working class women	43%	5%	46%	6%	113
College educ women	34%	8%	56%	2%	175
Male	45%	7%	46%	3%	286
Female	37%	7%	53%	3%	294
High school or less	37%	7%	50%	6%	116
Some college	47%	2%	45%	5%	131
College graduate	41%	7%	50%	1%	189
Post graduate	37%	11%	51%	1%	133
Less than \$30K	31%	7%	52%	10%	71
\$30K to \$60K	35%	8%	55%	3%	103
\$60K to \$75K	29%	7%	64%	0%	39
\$75K to \$100K	46%	5%	49%	0%	58
\$100K or more	46%	5%	49%	0%	134
Attend services 1 or more/week	58%	6%	32%	4%	150
1 2 times a month	52%	3%	42%	3%	77
Less often	32%	9%	55%	4%	151
Never	27%	9%	63%	1%	172
North Country	39%	4%	54%	3%	45
Central / Lakes	38%	6%	49%	7%	100
Connecticut Valley	32%	9%	57%	2%	87
Mass Border	49%	6%	45%	0%	180
Seacoast	44%	7%	48%	1%	98
Manchester Area	34%	8%	50%	8%	70
First Cong. Dist	41%	8%	47%	4%	270
Second Cong. Dist	41%	6%	51%	2%	310

**Decided Presidential Vote**

	<b><u>Def. Decided</u></b> 71%	<b><u>Leaning Towards Someone</u></b> 13%	<b><u>Still Trying To Decide</u></b> 15%	<b><u>DK</u></b> 1%	<b><u>(N)</u></b> 554
<b>STATEWIDE</b>					
Registered Democrat	84%	7%	8%	1%	153
Registered Undeclared	63%	17%	20%	1%	227
Registered Republican	75%	11%	15%	0%	139
Democrat	80%	10%	9%	1%	234
Independent	36%	25%	39%	0%	78
Republican	73%	12%	13%	1%	225
Liberal	81%	10%	9%	0%	136
Moderate	64%	14%	21%	1%	207
Conservative	70%	13%	16%	1%	168
Romney supporter	72%	14%	13%	1%	251
Obama supporter	77%	12%	11%	0%	268
Other/Undecided	12%	4%	77%	7%	31
Support Tea Party	79%	13%	8%	0%	146
Neutral	53%	18%	27%	1%	157
Oppose Tea Party	80%	9%	11%	0%	212
McCain/Palin Voter	68%	15%	16%	0%	220
Obama/Biden Voter	78%	9%	12%	0%	259
Other	53%	0%	47%	0%	21
Did Not Vote in 2008	47%	30%	16%	7%	31
Read Union Leader	65%	19%	16%	0%	147
Read Boston Globe	77%	8%	15%	0%	84
Watch WMUR	72%	13%	15%	1%	354
Listen to NHPR	70%	16%	14%	1%	173
10 yrs or less in NH	77%	10%	12%	1%	92
11 to 20 years	65%	20%	14%	1%	83
More than 20 years	70%	12%	17%	1%	361
18 to 34	39%	29%	28%	4%	55
35 to 49	59%	22%	19%	1%	96
50 to 64	79%	8%	14%	0%	211
65 and over	77%	10%	13%	1%	169
Working class men	63%	20%	15%	2%	123
College educ men	71%	12%	17%	0%	146
Working class women	72%	12%	16%	0%	101
College educ women	76%	9%	14%	1%	173
Male	67%	16%	16%	1%	274
Female	75%	10%	15%	1%	280
High school or less	59%	16%	23%	2%	106
Some college	74%	17%	9%	0%	118
College graduate	73%	12%	14%	1%	187
Post graduate	74%	9%	17%	0%	132
Less than \$30K	77%	5%	18%	0%	66
\$30K to \$60K	72%	14%	13%	0%	99
\$60K to \$75K	75%	9%	16%	0%	38
\$75K to \$100K	60%	18%	22%	0%	56
\$100K or more	76%	15%	9%	1%	134
Attend services 1 or more/week	74%	6%	19%	0%	146
1 2 times a month	70%	20%	9%	2%	75
Less often	66%	15%	18%	1%	146
Never	74%	13%	13%	0%	162
North Country	70%	11%	19%	0%	43
Central / Lakes	73%	10%	16%	1%	98
Connecticut Valley	67%	17%	15%	1%	79
Mass Border	73%	14%	13%	0%	174
Seacoast	71%	11%	16%	2%	95
Manchester Area	67%	15%	17%	0%	65
First Cong. Dist	71%	13%	15%	1%	261
Second Cong. Dist	70%	13%	16%	1%	293

**2012 Presidential Election – Romney vs. Obama  
(2012 Likely General Election Voters)**

	<u>Romney</u> 46%	<u>Obama</u> 49%	<u>Other</u> 2%	<u>Undecided</u> 4%	<u>(N)</u> 550
<b>STATEWIDE</b>					
Registered Democrat	12%	86%	0%	1%	153
Registered Undeclared	44%	48%	3%	5%	227
Registered Republican	89%	7%	0%	3%	139
Democrat	4%	92%	2%	1%	231
Independent	39%	42%	5%	14%	78
Republican	90%	7%	1%	2%	225
Liberal	12%	86%	0%	2%	135
Moderate	40%	53%	4%	4%	206
Conservative	81%	14%	0%	5%	168
Def. decided vote	46%	53%	1%	0%	391
Leaning towards someone	51%	47%	2%	0%	69
Still trying to decide	38%	34%	5%	23%	85
Extremely interested	50%	47%	1%	2%	319
Very interested	45%	51%	0%	3%	158
Somewhat/Not very interested	29%	50%	8%	13%	71
Approve of Obama	6%	92%	0%	1%	259
Neutral	5%	63%	9%	23%	22
Disapprove of Obama	88%	5%	3%	5%	269
Support Tea Party	90%	6%	2%	2%	144
Neutral	53%	41%	1%	5%	157
Oppose Tea Party	10%	86%	1%	3%	212
McCain/Palin Voter	91%	6%	1%	2%	220
Obama/Biden Voter	11%	85%	1%	3%	259
Other	39%	31%	15%	15%	21
Did Not Vote in 2008	26%	62%	4%	7%	29
Read Union Leader	48%	47%	3%	2%	144
Read Boston Globe	23%	74%	1%	3%	84
Watch WMUR	48%	47%	2%	4%	352
Listen to NHPR	32%	65%	1%	2%	173
10 yrs or less in NH	48%	47%	1%	4%	92
11 to 20 years	46%	50%	1%	3%	81
More than 20 years	45%	49%	2%	4%	359
18 to 34	30%	54%	9%	7%	54
35 to 49	49%	46%	1%	4%	94
50 to 64	46%	49%	2%	3%	211
65 and over	47%	50%	0%	3%	169

**2012 Presidential Election – Romney vs. Obama  
(2012 Likely General Election Voters)**

<b>STATEWIDE</b>	<b><u>Romney</u></b> <b>46%</b>	<b><u>Obama</u></b> <b>49%</b>	<b><u>Other</u></b> <b>2%</b>	<b><u>Undecided</u></b> <b>4%</b>	<b><u>(N)</u></b> <b>550</b>
Working class men	52%	38%	4%	6%	120
College educ men	51%	44%	2%	3%	146
Working class women	49%	46%	2%	3%	101
College educ women	35%	61%	0%	3%	172
Male	52%	41%	3%	4%	270
Female	40%	56%	1%	3%	280
High school or less	44%	45%	3%	7%	105
Some college	56%	39%	2%	2%	116
College graduate	45%	51%	2%	2%	187
Post graduate	39%	57%	0%	4%	132
Less than \$30K	37%	57%	1%	6%	66
\$30K to \$60K	39%	58%	0%	3%	99
\$60K to \$75K	40%	54%	5%	2%	37
\$75K to \$100K	46%	42%	6%	5%	56
\$100K or more	44%	53%	2%	2%	134
Attend services 1 or more/week	63%	33%	1%	3%	146
1 2 times a month	54%	40%	4%	3%	73
Less often	41%	55%	1%	4%	146
Never	31%	63%	3%	4%	160
North Country	33%	59%	1%	7%	43
Central / Lakes	41%	52%	1%	6%	98
Connecticut Valley	45%	49%	1%	5%	79
Mass Border	51%	43%	3%	3%	172
Seacoast	48%	47%	1%	4%	94
Manchester Area	45%	55%	1%	0%	64
First Cong. Dist	47%	50%	1%	2%	257
Second Cong. Dist	45%	47%	3%	5%	293