

THE CNN /WMUR NEW HAMPSHIRE PRIMARY POLL



University of
New Hampshire

February 7, 2016

HOME STRETCH: TRUMP KEEPS LEAD

By: Andrew E. Smith, Ph.D.
Zachary S. Azem, M.A.
UNH Survey Center

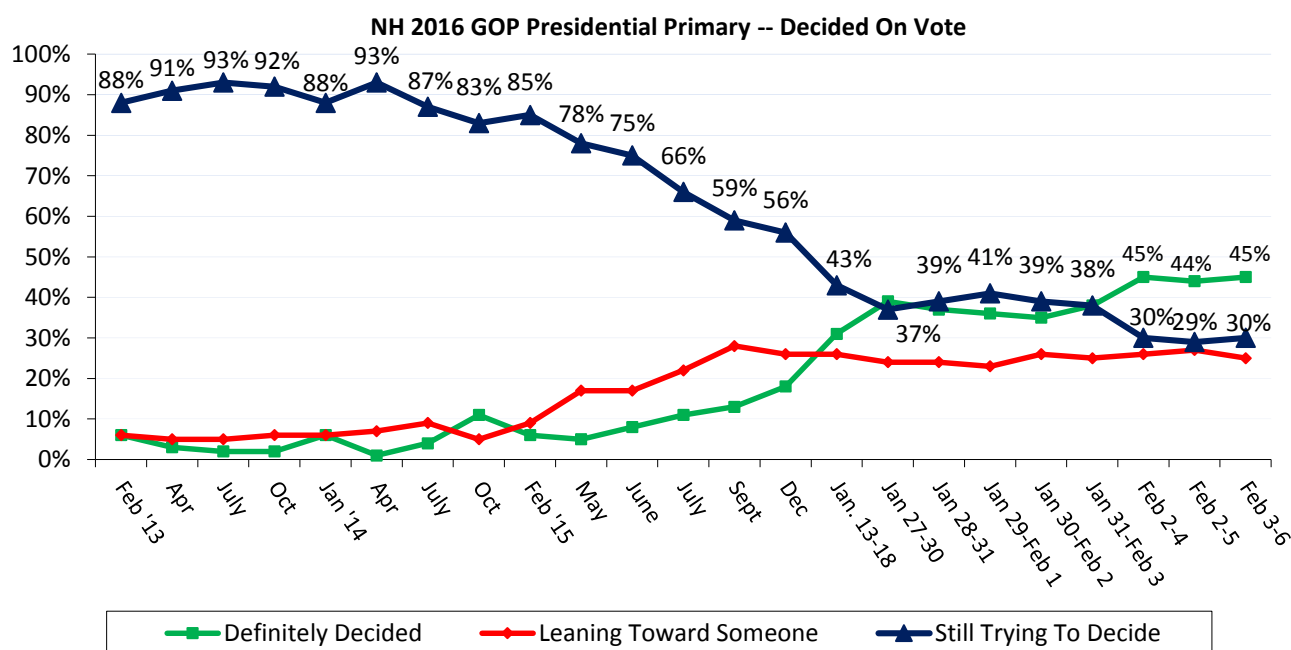
andrew.smith@unh.edu
603-862-2226
www.unh.edu/survey-center

DURHAM, NH – With only days remaining, Donald Trump still holds the lead in the New Hampshire Primary race and most Republican voters think he will win the primary. But only forty-five percent of New Hampshire Republican Primary voters say they have firmly decided who they will vote for in the Primary.

These findings are based on the latest **CNN/WMUR New Hampshire Primary Poll**,* conducted by the University of New Hampshire Survey Center. Nine hundred and fifty-three (953) randomly selected New Hampshire adults were interviewed by landline and cellular telephone between February 3 and February 6, 2016. The margin of sampling error is +/- 3.2 percent for the entire sample. Included were three hundred and sixty-two (362) likely 2016 Republican Primary voters (MSE = +/-5.2 percentage points), and four hundred and six (406) likely 2016 Democratic Primary voters (MSE = +/-4.9 percentage points).

NH Republicans Still Undecided

New Hampshire primary voters usually decide who they will vote for in the last weeks, or days of the campaign and a majority of likely Republican primary voters have not yet made up their minds about who they will vote for. Currently, only 45% of likely Republican Primary voters say they have definitely decided who they will support, 25% are leaning toward a candidate, and 30% are still trying to decide.



* We ask that this copyrighted information be referred to as *the CNN/WMUR New Hampshire Primary Poll*, sponsored by WMUR-TV and CNN, and conducted by the University of New Hampshire Survey Center.

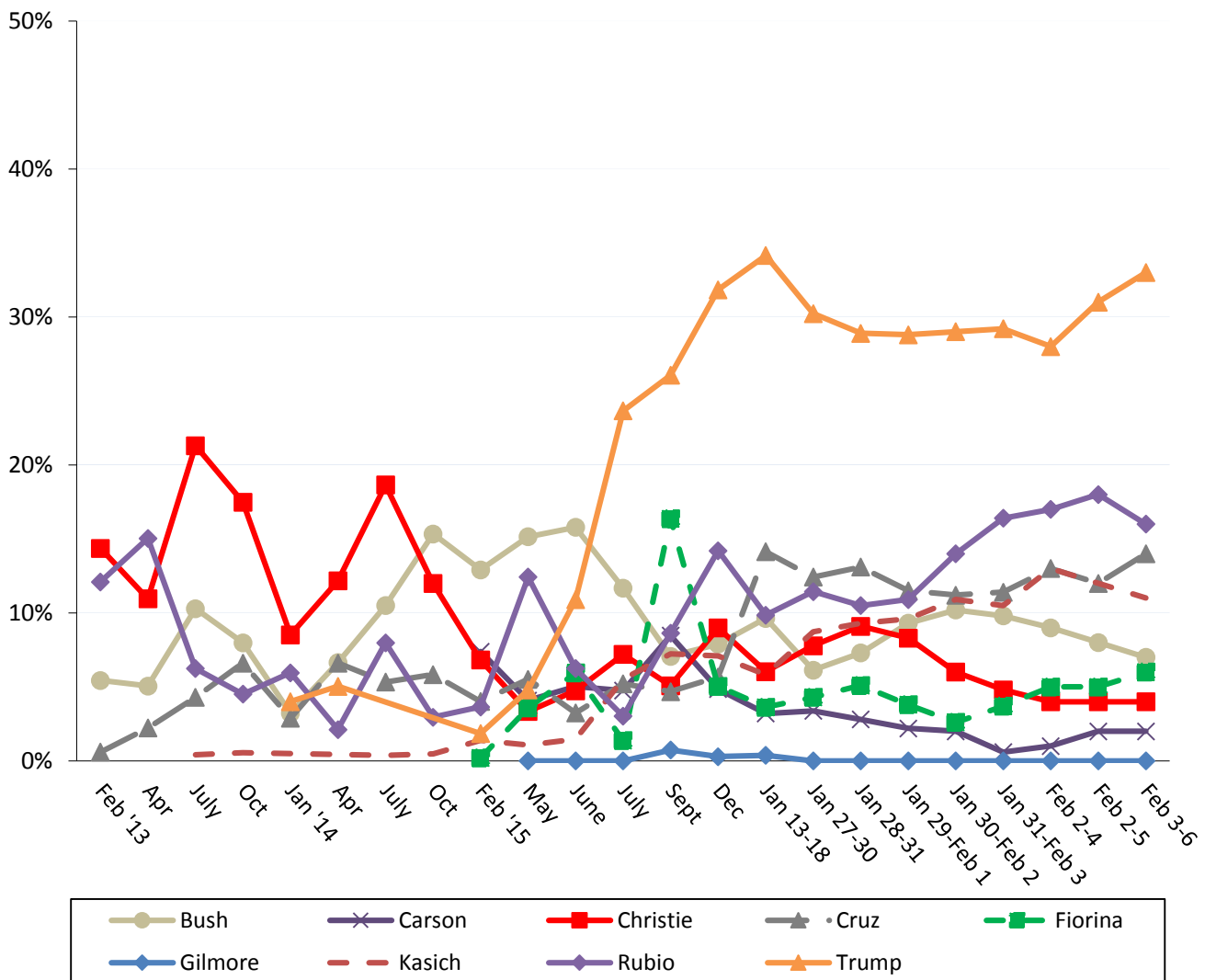
The Republican electorate is more interested in the 2016 primary than it was at a similar point in the 2008 cycle, the last time both parties had contested primaries. Currently, 58% of likely Republican primary voters say they are extremely interested in the election, 33% are very interested, and 9% are only somewhat interested or not very interested. By comparison, at this point in the election cycle, only 43% of likely Republican primary voters said they were extremely interested in the 2008 primary, 49% were very interested, and 9% were only somewhat interested or not very interested. Currently, 46% of undeclared voters who can vote in either primary, say they will vote in the Republican primary and 46% say they will vote in the Democratic primary.

2016 NH Republican Primary

Donald Trump continues to top the field in New Hampshire, rebounding to getting the support of 33% of likely Republican primary voters. Trump is followed by Marco Rubio (16%), Ted Cruz (14%), John Kasich (11%), Jeb Bush (7%), Carly Fiorina (6%), Chris Christie (4%), and Ben Carson (2%). All other potential candidates receive less than 1% support, and 6% say they are undecided.

Trump (44%) and Cruz (22%) are the leading candidates among primary voters who regularly listen to conservative talk radio. Trump (37%) and Rubio (25%) are the top choices among primary voters who regularly read the Union Leader. Trump also has the support of 47% of likely primary voters who say they have definitely decided who they are voting for on primary day.

NH 2016 GOP Presidential Primary -- Who Support If Vote Held Today?

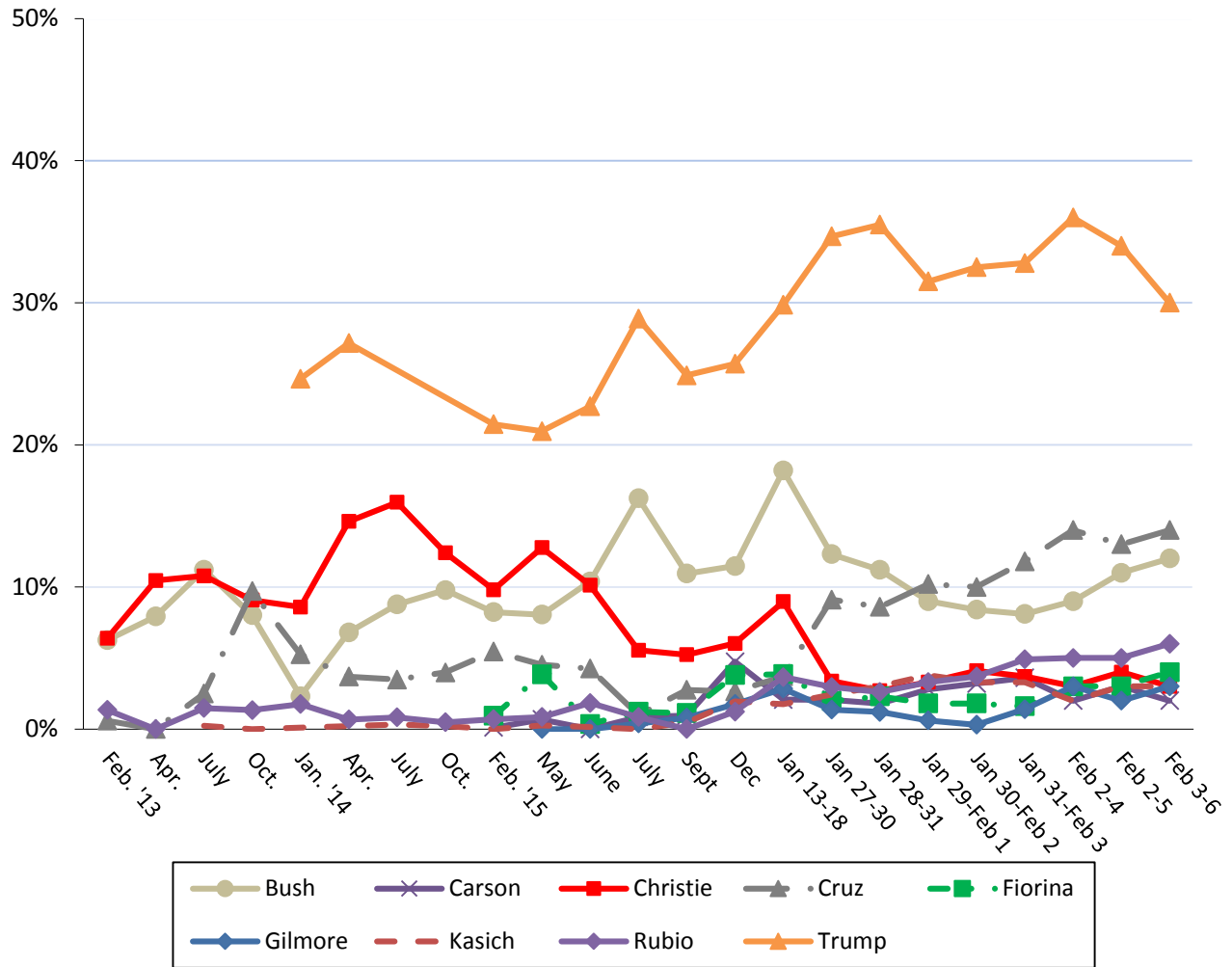


Most Unpopular Republican Candidate

Despite leading the New Hampshire field, Trump is also the candidate New Hampshire Republicans are least likely to vote for. When asked which candidate they would NOT vote for under any circumstance, 30% of likely Republican Primary voters say they would not vote for Trump, 14% would not vote for Cruz, 12% would not vote for Bush, 6% would not vote for Rubio, 4% would not vote for Fiorina, 3% would not vote for Kasich, 3% would not vote for Gilmore, 3% would not vote for Christie, 2% would not vote for Carson, 13% think all the prospective candidates are acceptable, and 9% are unsure.

Voters who frequently attend religious services (45%) and voters with a post-graduate education (41%) are most likely to say they wouldn't vote for Trump under any circumstances and conservative talk radio listeners (29%) are most likely to say they wouldn't vote for Bush under any circumstances.

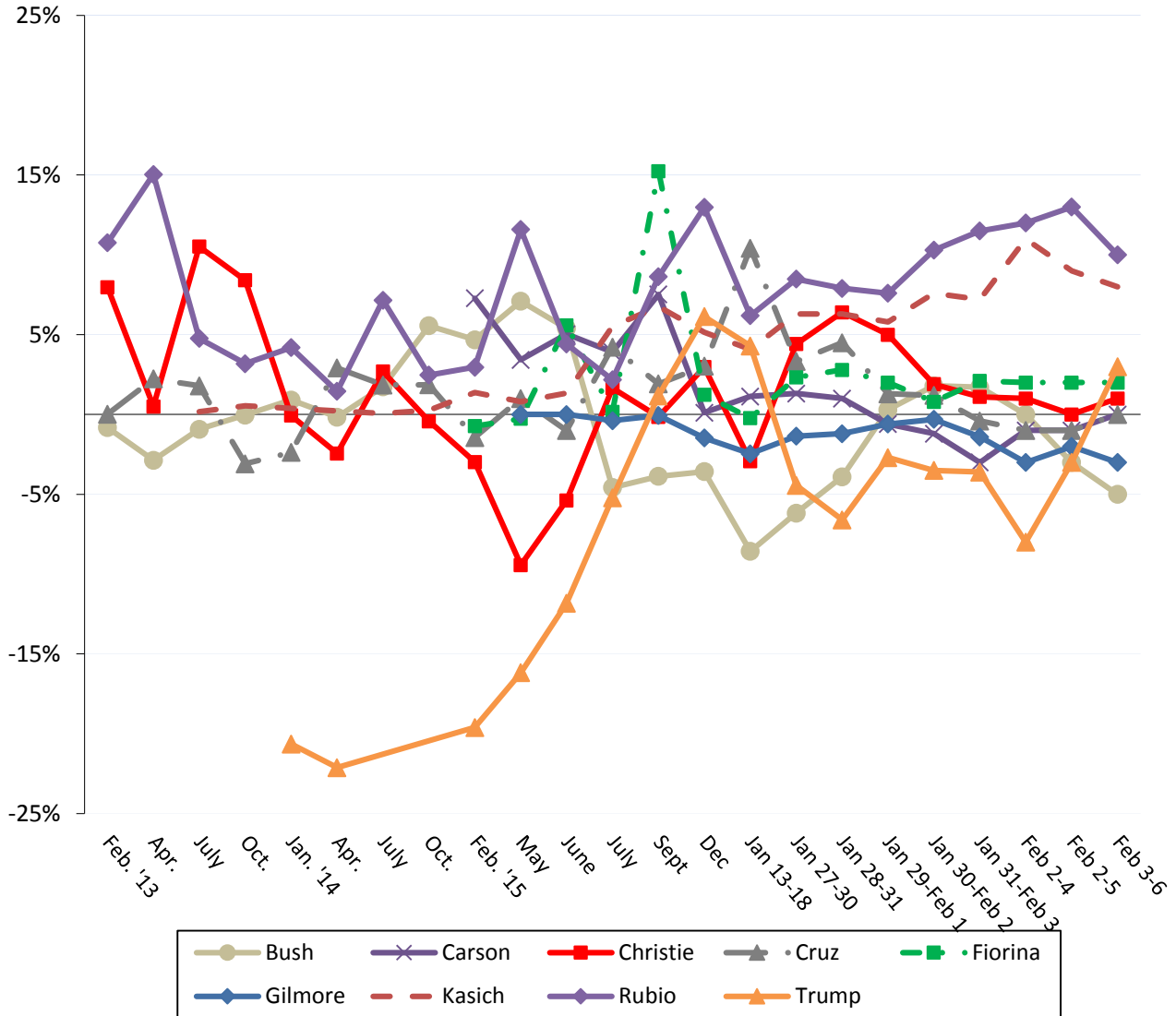
NH 2016 GOP Presidential Primary -- Would Not Vote For



Republican Net Electability

Rubio tops the field in net electability (the percentage who support a candidate minus the percent who would not vote for that candidate) with +10% and is essentially tied with Kasich at +8%. Trump (+3%), Fiorina (+2%) and Christie (+1%) also have positive net electability scores. Cruz (0%), Carson (0%), Gilmore (-3%), and Bush (-5%) have neutral or negative net electability scores.

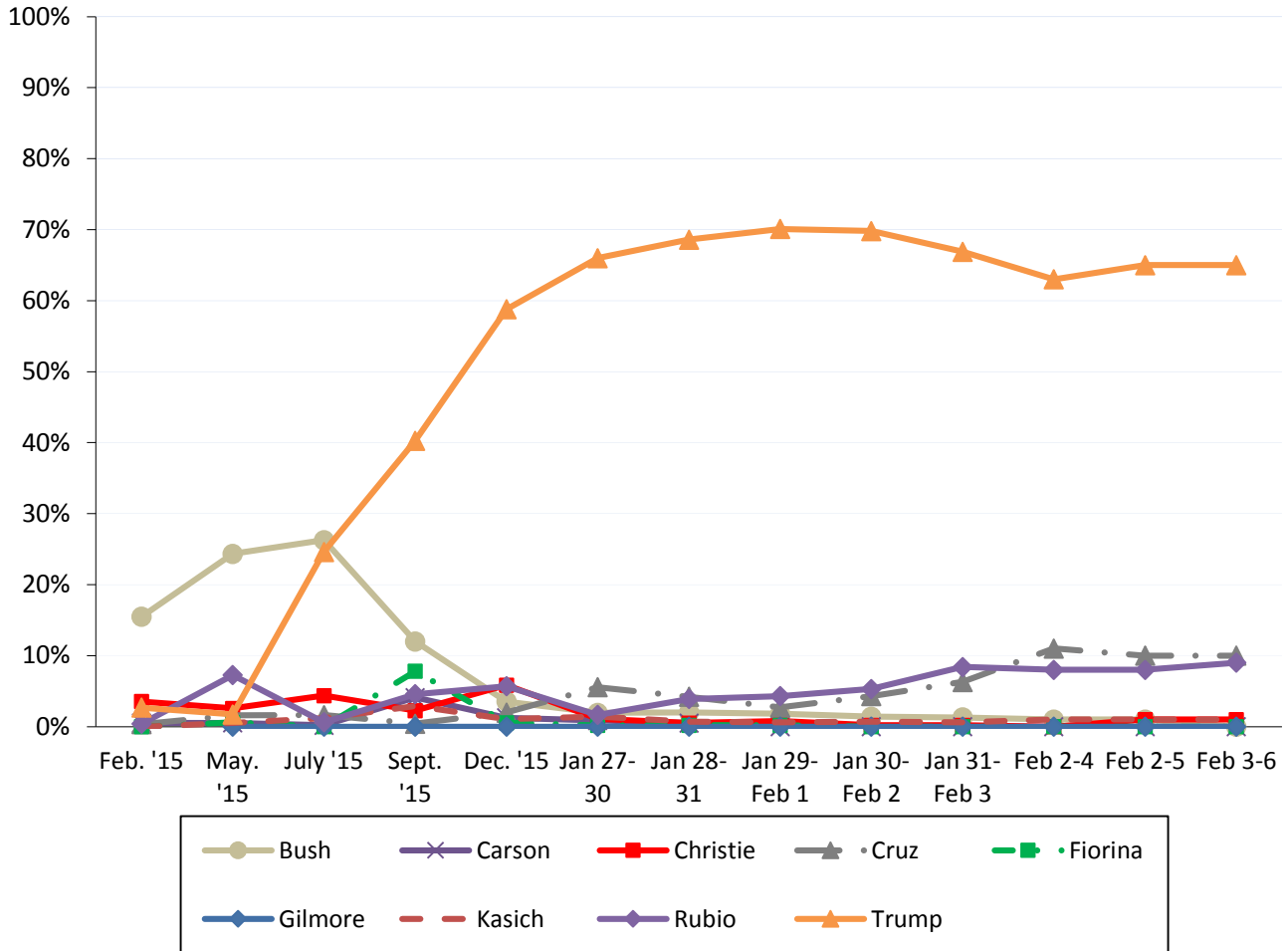
NH 2016 GOP Presidential Primary -- Net Electability Scores



Who Will Win NH Primary?

Trump remains the candidate that most New Hampshire Republicans think will win in the Granite State. When asked who they think will win the 2016 New Hampshire Republican Primary, 65% think Trump will win, 10% think Cruz will win, and 9% think Rubio will win.

Who Will Win NH 2016 GOP Presidential Primary?



CNN/WMUR New Hampshire Primary Poll Methodology

These findings are based on the latest CNN/WMUR New Hampshire Primary Poll, conducted by the University of New Hampshire Survey Center and funded by CNN and WMUR-TV, Manchester, NH. Interviews were conducted by the UNH Survey Center with assistance from the Center for Public Interest Polling in Eagleton Institute at Rutgers. Nine hundred and fifty-three (953) randomly selected New Hampshire adults were interviewed by landline and cellular telephone between February 3 and February 6, 2016. If a household included more than one adult, the adult who had the most recent birthday was selected to be interviewed.

The margin of sampling error is +/- 3.2 percent for the entire sample. Included were three hundred and sixty-two (362) likely 2016 Republican Primary voters (MSE = +/-5.2 percentage points), and four hundred and six (406) likely 2016 Democratic Primary voters (MSE = +/-4.9 percentage points). These MSE's have not been adjusted for design effect. The design effect for the survey is 1.1%.

The random sample used in the CNN/WMUR New Hampshire Primary Poll was purchased from Marketing Systems Group (MSG), Horsham, PA. MSG screens each selected telephone number to eliminate non-working numbers, disconnected numbers, and business numbers to improve the efficiency of the sample, reducing the amount of time interviewers spend calling non-usable numbers.

The data have been weighted to adjust for numbers of adults and telephone lines within households. Additionally, data were weighted by respondent sex, age, and region of the state to targets from the most recent American Community Survey (ACS) conducted by the U.S. Census Bureau. In addition to potential sampling error, all surveys have other potential sources of non-sampling error including question order effects, question wording effects, and non-response. Due to rounding, percentages may not sum to 100%. The number of respondents in each demographic below may not equal the number reported in cross-tabulation tables as some respondents choose not to answer some questions.

For more information about the methodology used in the CNN/WMUR New Hampshire Primary Poll, contact Dr. Andrew Smith at (603) 862-2226 or by email at andrew.smith@unh.edu.

New Hampshire Primary Poll, February 3-6, 2016 Demographics

| Sex | N | % | Region | N | % |
|-----------------------------------|------------|------------|-----------------------------|------------|------------|
| Male | 466 | 49% | North Country | 76 | 8% |
| Female | 487 | 51% | Central/Lakes | 152 | 16% |
| | | | Connecticut Valley | 140 | 15% |
| | | | Mass Border | 276 | 29% |
| Age | N | % | Seacoast | 159 | 17% |
| 18 to 34 | 242 | 27% | Manchester Area | 151 | 16% |
| 35 to 49 | 227 | 25% | | | |
| 50 to 64 | 280 | 31% | Party Registration | N | % |
| 65 and Over | 163 | 18% | Democrat | 264 | 28% |
| | | | Undeclared & Not Reg. | 473 | 50% |
| Highest Level of Education | N | % | Republican | 211 | 22% |
| High School or Less | 139 | 18% | | | |
| Some College | 196 | 25% | Party Identification | N | % |
| College Graduate | 281 | 36% | Democrat | 374 | 47% |
| Post-Graduate | 176 | 22% | Independent | 115 | 15% |
| | | | Republican | 299 | 38% |

New Hampshire Primary Poll, February 3-6, 2016 Likely Republican Primary Voter Demographics

| | | | | | |
|-----------------------------------|----------|----------|-----------------------------|----------|----------|
| Sex | N | % | Region | N | % |
| Male | 192 | 53% | North Country | 29 | 8% |
| Female | 170 | 47% | Central/Lakes | 62 | 17% |
| | | | Connecticut Valley | 38 | 10% |
| Age | N | % | Mass Border | 118 | 33% |
| 18 to 34 | 62 | 18% | Seacoast | 52 | 14% |
| 35 to 49 | 90 | 26% | Manchester Area | 63 | 18% |
| 50 to 64 | 132 | 38% | | | |
| 65 and Over | 64 | 18% | Party Registration | N | % |
| | | | Democrat | 0 | 0% |
| Highest Level of Education | N | % | Undeclared & Not Reg. | 162 | 45% |
| High School or Less | 65 | 18% | Republican | 200 | 55% |
| Some College | 82 | 23% | | | |
| College Graduate | 152 | 43% | Party Identification | N | % |
| Post-Graduate | 58 | 16% | Democrat | 32 | 9% |
| | | | Independent | 45 | 13% |
| | | | Republican | 281 | 79% |

Decided Who to Vote for in 2016 GOP Primary?

(Likely NH GOP Primary Voters)

“Have you definitely decided who you will vote for in the New Hampshire primary ... are you leaning toward someone ... or have you considered some candidates but are still trying to decide?”

| | <u>Definitely Decided</u> | <u>Leaning Toward Someone</u> | <u>Still Trying to Decide</u> | <u>(N)</u> |
|--------------------|-------------------------------|-----------------------------------|-----------------------------------|--------------|
| Feb 3-6 '16 | 45% | 25% | 30% | (362) |
| Feb 2-5 '16 | 44% | 27% | 29% | (370) |
| Feb 2-4 '16 | 45% | 26% | 30% | (287) |
| Jan 31-Feb 3 '16 | 38% | 25% | 38% | (390) |
| Jan 30-Feb 2 '16 | 35% | 26% | 39% | (378) |
| Jan 29-Feb 1 '16 | 36% | 23% | 41% | (362) |
| Jan 28-31 '16 | 37% | 24% | 39% | (359) |
| Jan 27-30 '16 | 39% | 24% | 37% | (409) |
| Jan 13-18 '16 | 31% | 26% | 43% | (412) |
| Dec '15 | 18% | 26% | 56% | (403) |
| Sept '15 | 13% | 28% | 59% | (343) |
| July '15 | 11% | 22% | 66% | (309) |
| June '15 | 8% | 17% | 75% | (401) |
| May '15 | 5% | 17% | 78% | (291) |
| Feb. '15 | 6% | 9% | 85% | (346) |
| Oct. '14 | 11% | 5% | 83% | (271) |
| July '14 | 4% | 9% | 87% | (247) |
| Apr. '14 | 1% | 7% | 83% | (182) |
| Jan. '14 | 6% | 6% | 88% | (245) |
| Oct. '13 | 2% | 6% | 92% | (220) |
| July '13 | 2% | 5% | 93% | (197) |
| Apr. '13 | 3% | 5% | 91% | (164) |
| Feb. '13 | 6% | 6% | 88% | (205) |

Republican Nomination in 2016 NH Primary

(Likely NH GOP Primary Voters)

"I'm going to read you the names of the candidates who are running for the Republican nomination. If the Republican primary for president were held today, which of the following would you support for the Republican nomination Jeb Bush ... Ben Carson ... Chris Christie ... Ted Cruz ... Carly Fiorina ... Jim Gilmore ... John Kasich ... Marco Rubio ... Donald Trump ... or someone else?" ROTATE CANDIDATES

| | <u>2015</u> | | | | | | <u>2016</u> | | | | | | | | |
|-----------------------|-------------|------------|-------------|-------------|-------------|------------|------------------|------------------|------------------|---------------------|---------------------|---------------------|----------------|----------------|----------------|
| | <u>Feb</u> | <u>May</u> | <u>June</u> | <u>July</u> | <u>Sept</u> | <u>Dec</u> | <u>Jan 13-18</u> | <u>Jan 27-30</u> | <u>Jan 28-31</u> | <u>Jan 29-Feb 1</u> | <u>Jan 30-Feb 2</u> | <u>Jan 31-Feb 3</u> | <u>Feb 2-4</u> | <u>Feb 2-5</u> | <u>Feb 3-6</u> |
| Donald Trump | 2% | 5% | 11% | 24% | 26% | 32% | 34% | 30% | 29% | 29% | 29% | 29% | 28% | 31% | 33% |
| Marco Rubio | 5% | 12% | 6% | 3% | 9% | 14% | 10% | 11% | 11% | 11% | 14% | 16% | 17% | 18% | 16% |
| Ted Cruz | 4% | 6% | 3% | 5% | 5% | 6% | 14% | 12% | 13% | 12% | 11% | 11% | 13% | 12% | 14% |
| John Kasich | 1% | 1% | 1% | 6% | 7% | 7% | 6% | 9% | 9% | 10% | 11% | 11% | 13% | 12% | 11% |
| Jeb Bush | 17% | 15% | 16% | 12% | 7% | 8% | 10% | 6% | 7% | 9% | 10% | 10% | 9% | 8% | 7% |
| Carly Fiorina | * | 4% | 6% | 1% | 16% | 5% | 4% | 4% | 5% | 4% | 3% | 4% | 5% | 5% | 6% |
| Chris Christie | 9% | 3% | 5% | 7% | 5% | 9% | 6% | 8% | 9% | 9% | 6% | 5% | 4% | 4% | 4% |
| Ben Carson | 8% | 4% | 5% | 5% | 8% | 5% | 3% | 3% | 3% | 2% | 2% | 1% | 1% | 2% | 2% |
| Jim Gilmore | --- | 0% | 0% | 0% | 1% | * | * | 0% | 0% | 0% | 0% | 0% | 0% | 0% | * |
| Rand Paul | 9% | 10% | 9% | 7% | 3% | 2% | 6% | 3% | 4% | 4% | 4% | --- | --- | --- | --- |
| Mike Huckabee | 9% | 3% | 2% | 2% | * | 1% | 1% | 1% | 1% | --- | --- | --- | --- | --- | --- |
| Rick Santorum | 2% | 2% | 0% | 1% | * | * | 0% | 0% | 0% | 0% | 0% | --- | --- | --- | --- |
| Lindsey Graham | --- | 1% | 1% | 1% | 1% | 1% | --- | --- | --- | --- | --- | --- | --- | --- | --- |
| George Pataki | 1% | 2% | 1% | * | * | 0% | --- | --- | --- | --- | --- | --- | --- | --- | --- |
| Scott Walker | 12% | 11% | 8% | 11% | * | --- | --- | --- | --- | --- | --- | --- | --- | --- | --- |
| Mark Everson | --- | --- | --- | --- | 0% | --- | --- | --- | --- | --- | --- | --- | --- | --- | --- |
| Bobby Jindal | 1% | 2% | * | 2% | 0% | --- | --- | --- | --- | --- | --- | --- | --- | --- | --- |
| Rick Perry | 2% | 4% | 4% | 2% | --- | --- | --- | --- | --- | --- | --- | --- | --- | --- | --- |
| Bob Ehrlich | --- | * | * | 0% | --- | --- | --- | --- | --- | --- | --- | --- | --- | --- | --- |
| Peter King | * | * | 0% | --- | --- | --- | --- | --- | --- | --- | --- | --- | --- | --- | --- |
| John Bolton | 1% | 0% | --- | --- | --- | --- | --- | --- | --- | --- | --- | --- | --- | --- | --- |
| Paul Ryan | --- | --- | --- | --- | --- | --- | --- | --- | --- | --- | --- | --- | --- | --- | --- |
| Kelly Ayotte | --- | --- | --- | --- | --- | --- | --- | --- | --- | --- | --- | --- | --- | --- | --- |
| Scott Brown | --- | --- | --- | --- | --- | --- | --- | --- | --- | --- | --- | --- | --- | --- | --- |
| Rob Portman | --- | --- | --- | --- | --- | --- | --- | --- | --- | --- | --- | --- | --- | --- | --- |
| John Huntsman | --- | --- | --- | --- | --- | --- | --- | --- | --- | --- | --- | --- | --- | --- | --- |
| John Thune | --- | --- | --- | --- | --- | --- | --- | --- | --- | --- | --- | --- | --- | --- | --- |
| Someone Else | 1% | 1% | 1% | 0% | * | 0% | * | 3% | 2% | 2% | * | 4% | 2% | 2% | 1% |
| Don't Know Yet | 15% | 14% | 21% | 12% | 11% | 9% | 6% | 10% | 7% | 9% | 10% | 9% | 8% | 7% | 6% |
| (N) | (348) | (293) | (400) | (305) | (344) | (399) | (408) | (400) | (352) | (354) | (372) | (386) | (285) | (367) | (361) |

* = Less than 1% --- = Not Included

| | <u>2013</u> | | | | <u>2014</u> | | | |
|-----------------------|-------------|------------|-------------|------------|-------------|------------|-------------|------------|
| | <u>Feb</u> | <u>Apr</u> | <u>July</u> | <u>Oct</u> | <u>Jan</u> | <u>Apr</u> | <u>July</u> | <u>Oct</u> |
| Donald Trump | --- | --- | --- | --- | 4% | 5% | --- | --- |
| Ted Cruz | 1% | 2% | 4% | 6% | 3% | 7% | 5% | 6% |
| Marco Rubio | 12% | 15% | 6% | 4% | 6% | 2% | 8% | 3% |
| John Kasich | --- | --- | * | * | --- | --- | * | * |
| Chris Christie | 14% | 11% | 21% | 16% | 9% | 12% | 19% | 12% |
| Jeb Bush | 5% | 5% | 10% | 8% | 3% | 7% | 11% | 15% |
| Carly Fiorina | --- | --- | --- | --- | --- | --- | --- | --- |
| Ben Carson | --- | --- | --- | --- | --- | --- | --- | --- |
| Rand Paul | 8% | 15% | 16% | 17% | 16% | 15% | 14% | 7% |
| Mike Huckabee | --- | --- | --- | --- | --- | --- | 8% | 9% |
| Jim Gilmore | --- | --- | --- | --- | --- | --- | --- | --- |
| Rick Santorum | 3% | 4% | 4% | 4% | --- | 1% | 1% | 2% |
| Lindsey Graham | --- | --- | --- | --- | --- | --- | --- | --- |
| George Pataki | --- | --- | --- | --- | --- | --- | --- | --- |
| Scott Walker | 3% | 1% | 2% | 2% | 2% | 3% | 3% | 3% |
| Mark Everson | --- | --- | --- | --- | --- | --- | --- | --- |
| Bobby Jindal | 2% | 2% | * | --- | --- | 3% | 5% | 3% |
| Rick Perry | --- | --- | 4% | 1% | 2% | 1% | 2% | 2% |
| Bob Ehrlich | --- | --- | --- | --- | --- | --- | --- | --- |
| Peter King | --- | --- | --- | * | * | --- | --- | --- |
| John Bolton | --- | --- | --- | --- | --- | --- | --- | --- |
| Paul Ryan | 11% | 11% | 8% | 9% | 6% | 13% | 5% | 6% |
| Kelly Ayotte | 10% | 5% | --- | --- | 13% | 13% | --- | --- |
| Scott Brown | --- | --- | --- | 7% | 11% | --- | --- | --- |
| Rob Portman | 0% | 1% | * | * | * | * | 1% | * |
| John Huntsman | 8% | 5% | --- | --- | --- | --- | --- | --- |
| John Thune | 1% | * | --- | --- | --- | --- | --- | --- |
| Someone Else | 2% | 0% | 3% | 3% | 6% | 3% | 3% | 3% |
| Don't Know Yet | 20% | 23% | 20% | 21% | 18% | 15% | 15% | 28% |
| (N) | (209) | (167) | (199) | (233) | (244) | (186) | (245) | (274) |

Candidate You Wouldn't Vote For In 2016 NH Republican Primary
(Likely NH GOP Primary Voters)

“Which of the candidates who are running for the Republican nomination would you NOT vote for under any circumstance?”

| | <u>2015</u> | | | | | | <u>2016</u> | | | | | | | | |
|-----------------------|-------------|------------|-------------|-------------|-------------|------------|------------------|------------------|------------------|---------------------|---------------------|---------------------|----------------|----------------|----------------|
| | <u>Feb</u> | <u>May</u> | <u>June</u> | <u>July</u> | <u>Sept</u> | <u>Dec</u> | <u>Jan 13-18</u> | <u>Jan 27-30</u> | <u>Jan 28-31</u> | <u>Jan 29-Feb 1</u> | <u>Jan 30-Feb 2</u> | <u>Jan 31-Feb 3</u> | <u>Feb 2-4</u> | <u>Feb 2-5</u> | <u>Feb 3-6</u> |
| Donald Trump | 21% | 21% | 23% | 29% | 25% | 26% | 30% | 35% | 36% | 31% | 33% | 33% | 36% | 34% | 30% |
| Ted Cruz | 5% | 5% | 4% | 1% | 3% | 3% | 4% | 9% | 9% | 10% | 10% | 12% | 14% | 13% | 14% |
| Jeb Bush | 8% | 8% | 10% | 16% | 11% | 11% | 18% | 12% | 11% | 9% | 8% | 8% | 9% | 11% | 12% |
| Marco Rubio | 1% | 1% | 2% | 1% | 0% | 1% | 4% | 3% | 3% | 3% | 4% | 5% | 5% | 5% | 6% |
| Carly Fiorina | 1% | 4% | * | 1% | 1% | 4% | 4% | 2% | 2% | 2% | 2% | 2% | 3% | 3% | 4% |
| Chris Christie | 10% | 13% | 10% | 6% | 5% | 6% | 9% | 3% | 3% | 3% | 4% | 4% | 3% | 4% | 3% |
| Jim Gilmore | --- | 0% | 0% | * | 1% | 2% | 3% | 1% | 1% | 1% | * | 1% | 3% | 2% | 3% |
| John Kasich | 0% | * | * | 0% | * | 2% | 2% | 2% | 3% | 4% | 3% | 3% | 2% | 3% | 3% |
| Ben Carson | * | 1% | 0% | 1% | 1% | 5% | 2% | 2% | 2% | 3% | 3% | 4% | 2% | 3% | 2% |
| Rand Paul | 5% | 5% | 4% | 2% | 10% | 7% | 5% | 4% | 5% | 6% | 5% | --- | --- | --- | --- |
| Rick Santorum | 3% | 4% | 2% | 1% | 2% | 3% | 1% | 1% | 2% | 2% | 2% | --- | --- | --- | --- |
| Mike Huckabee | 3% | 2% | 3% | 3% | 8% | 4% | 2% | 1% | 1% | 1% | --- | --- | --- | --- | --- |
| Lindsey Graham | --- | 2% | 1% | 4% | 4% | 3% | --- | --- | --- | --- | --- | --- | --- | --- | --- |
| George Pataki | * | 4% | 2% | 2% | 2% | 2% | --- | --- | --- | --- | --- | --- | --- | --- | --- |
| Mark Everson | --- | --- | --- | --- | 1% | --- | --- | --- | --- | --- | --- | --- | --- | --- | --- |
| Bobby Jindal | 1% | 1% | 2% | * | 1% | --- | --- | --- | --- | --- | --- | --- | --- | --- | --- |
| Scott Walker | * | 1% | 2% | * | * | --- | --- | --- | --- | --- | --- | --- | --- | --- | --- |
| Rick Perry | 2% | 1% | 1% | 2% | --- | --- | --- | --- | --- | --- | --- | --- | --- | --- | --- |
| Bob Ehrlich | --- | 0% | * | 0% | --- | --- | --- | --- | --- | --- | --- | --- | --- | --- | --- |
| Peter King | 1% | 0% | 1% | --- | --- | --- | --- | --- | --- | --- | --- | --- | --- | --- | --- |
| John Bolton | 0% | 1% | --- | --- | --- | --- | --- | --- | --- | --- | --- | --- | --- | --- | --- |
| Mitt Romney | 5% | --- | --- | --- | --- | --- | --- | --- | --- | --- | --- | --- | --- | --- | --- |
| Paul Ryan | --- | --- | --- | --- | --- | --- | --- | --- | --- | --- | --- | --- | --- | --- | --- |
| Rob Portman | --- | --- | --- | --- | --- | --- | --- | --- | --- | --- | --- | --- | --- | --- | --- |
| Kelly Ayotte | --- | --- | --- | --- | --- | --- | --- | --- | --- | --- | --- | --- | --- | --- | --- |
| Scott Brown | --- | --- | --- | --- | --- | --- | --- | --- | --- | --- | --- | --- | --- | --- | --- |
| John Huntsman | --- | --- | --- | --- | --- | --- | --- | --- | --- | --- | --- | --- | --- | --- | --- |
| John Thune | --- | --- | --- | --- | --- | --- | --- | --- | --- | --- | --- | --- | --- | --- | --- |
| Someone Else | 1% | * | 1% | 1% | 0% | 1% | * | 1% | 1% | 1% | 1% | 6% | 2% | 2% | 1% |
| All OK | 11% | 10% | 13% | 12% | 10% | 12% | 10% | 14% | 14% | 15% | 15% | 13% | 13% | 13% | 13% |
| Don't Know | 22% | 18% | 19% | 17% | 15% | 9% | 6% | 9% | 9% | 10% | 9% | 10% | 10% | 9% | 9% |
| (N) | (347) | (285) | (397) | (307) | (343) | (399) | (406) | (400) | (353) | (358) | (374) | (387) | (284) | (364) | (357) |

| | <u>2013</u> | | | | <u>2014</u> | | | |
|----------------|-------------|------------|-------------|------------|-------------|------------|-------------|------------|
| | <u>Feb</u> | <u>Apr</u> | <u>July</u> | <u>Oct</u> | <u>Jan</u> | <u>Apr</u> | <u>July</u> | <u>Oct</u> |
| Donald Trump | --- | --- | --- | --- | 25% | 27% | --- | --- |
| Jeb Bush | 6% | 8% | 11% | 8% | 2% | 7% | 9% | 10% |
| Ted Cruz | 1% | * | 3% | 8% | 5% | 4% | 3% | 4% |
| Rand Paul | 6% | 9% | 3% | 5% | 3% | 4% | 3% | 5% |
| Chris Christie | 6% | 11% | 11% | 7% | 9% | 15% | 16% | 12% |
| Marco Rubio | 1% | * | 2% | 2% | 2% | 1% | 1% | * |
| John Kasich | --- | --- | * | 0% | --- | --- | * | * |
| Ben Carson | --- | --- | --- | --- | --- | --- | --- | --- |
| Carly Fiorina | --- | --- | --- | --- | --- | --- | --- | --- |
| Rick Santorum | 11% | 13% | 11% | 6% | --- | 5% | 7% | 4% |
| Jim Gilmore | --- | --- | --- | --- | --- | --- | --- | --- |
| Mike Huckabee | --- | --- | --- | --- | --- | --- | 4% | 6% |
| Lindsey Graham | --- | --- | --- | --- | --- | --- | --- | --- |
| George Pataki | --- | --- | --- | --- | --- | --- | --- | --- |
| Mark Everson | --- | --- | --- | --- | --- | --- | --- | --- |
| Bobby Jindal | 2% | * | 1% | --- | --- | * | 1% | 1% |
| Scott Walker | 2% | * | 0% | * | * | 0% | 3% | * |
| Rick Perry | --- | --- | 5% | 6% | 2% | 3% | 7% | 4% |
| Bob Ehrlich | --- | --- | --- | --- | --- | --- | --- | --- |
| Peter King | --- | --- | --- | 5% | 1% | --- | --- | --- |
| John Bolton | --- | --- | --- | --- | --- | --- | --- | --- |
| Mitt Romney | --- | --- | --- | --- | --- | --- | --- | --- |
| Paul Ryan | 2% | * | * | 1% | * | 0% | 1% | 0% |
| Rob Portman | 3% | 1% | 1% | * | * | 0% | * | 1% |
| Kelly Ayotte | 6% | 6% | --- | --- | 5% | 4% | --- | --- |
| Scott Brown | --- | --- | --- | 2% | 5% | --- | --- | --- |
| John Huntsman | 4% | 6% | --- | --- | --- | --- | --- | --- |
| John Thune | 1% | * | --- | --- | --- | --- | --- | --- |
| Someone Else | 2% | * | * | 1% | * | 2% | * | * |
| All OK | 15% | 24% | 25% | 20% | 21% | 16% | 23% | 17% |
| Don't Know | 32% | 21% | 25% | 28% | 19% | 14% | 21% | 34% |
| (N) | (208) | (168) | (197) | (232) | (243) | (185) | (243) | (271) |

Who Will Win 2016 NH Republican Primary?
(Likely NH GOP Primary Voters)

“Regardless of who you are voting for, which candidate do you think is most likely to win the New Hampshire Republican primary?”

| | <u>2015</u> | | | | | <u>2016</u> | | | | | | | |
|-----------------------|-------------|------------|-------------|-------------|------------|------------------|------------------|---------------------|---------------------|---------------------|----------------|----------------|----------------|
| | <u>Feb</u> | <u>May</u> | <u>July</u> | <u>Sept</u> | <u>Dec</u> | <u>Jan 27-30</u> | <u>Jan 28-31</u> | <u>Jan 29-Feb 1</u> | <u>Jan 30-Feb 2</u> | <u>Jan 31-Feb 3</u> | <u>Feb 2-4</u> | <u>Feb 2-5</u> | <u>Feb 3-6</u> |
| Donald Trump | 3% | 2% | 25% | 40% | 59% | 66% | 69% | 70% | 70% | 67% | 63% | 65% | 65% |
| Ted Cruz | * | 2% | 2% | * | 2% | 6% | 4% | 3% | 4% | 6% | 11% | 10% | 10% |
| Marco Rubio | * | 7% | 1% | 5% | 6% | 2% | 4% | 4% | 5% | 8% | 8% | 8% | 9% |
| John Kasich | 0% | 1% | 1% | 3% | 1% | 1% | 1% | 1% | 1% | 1% | 1% | 1% | 1% |
| Chris Christie | 4% | 3% | 4% | 2% | 6% | 1% | 1% | 1% | * | * | * | 1% | 1% |
| Jeb Bush | 15% | 24% | 26% | 12% | 4% | 2% | 2% | 2% | 1% | 1% | 1% | 1% | * |
| Carly Fiorina | 0% | 1% | 0% | 8% | 1% | * | * | * | 0% | 0% | * | * | * |
| Ben Carson | 1% | 1% | * | 4% | 1% | 1% | 1% | 0% | 0% | 0% | 0% | 0% | 0% |
| Jim Gilmore | --- | 0% | 0% | 0% | 0% | 0% | 0% | 0% | 0% | 0% | 0% | 0% | 0% |
| Rand Paul | 7% | 10% | 2% | 1% | 1% | 1% | 1% | 1% | 1% | --- | --- | --- | --- |
| Mike Huckabee | 1% | * | 2% | 0% | * | 0% | 0% | 0% | --- | --- | --- | --- | --- |
| Rick Santorum | 1% | 3% | * | 1% | 0% | 0% | 0% | 0% | 0% | --- | --- | --- | --- |
| George Pataki | 0% | * | 0% | 0% | 0% | --- | --- | --- | --- | --- | --- | --- | --- |
| Lindsey Graham | --- | 0% | 0% | 0% | 0% | --- | --- | --- | --- | --- | --- | --- | --- |
| Scott Walker | 3% | 7% | 8% | * | --- | --- | --- | --- | --- | --- | --- | --- | --- |
| Bobby Jindal | 1% | 0% | 1% | 0% | --- | --- | --- | --- | --- | --- | --- | --- | --- |
| Mark Everson | --- | --- | --- | 0% | --- | --- | --- | --- | --- | --- | --- | --- | --- |
| Rick Perry | 2% | 2% | * | --- | --- | --- | --- | --- | --- | --- | --- | --- | --- |
| Bob Ehrlich | --- | 0% | 0% | --- | --- | --- | --- | --- | --- | --- | --- | --- | --- |
| John Bolton | * | * | --- | --- | --- | --- | --- | --- | --- | --- | --- | --- | --- |
| Peter King | 0% | * | --- | --- | --- | --- | --- | --- | --- | --- | --- | --- | --- |
| Mitt Romney | 22% | --- | --- | --- | --- | --- | --- | --- | --- | --- | --- | --- | --- |
| Someone Else | * | 0% | 0% | 0% | 0% | 1% | 2% | 2% | 1% | 0% | * | 0% | 1% |
| Don't Know | 40% | 38% | 28% | 24% | 20% | 19% | 17% | 17% | 16% | 16% | 16% | 15% | 13% |
| (N) | (347) | (289) | (309) | (344) | (403) | (405) | (357) | (360) | (378) | (389) | (287) | (370) | (361) |

**Decided 2016 GOP Primary Vote
(Likely 2016 GOP Primary Voters)**

| | Def. <u>Decided</u> | Leaning <u>Towards Someone</u> | Still Trying <u>To Decide</u> | (N) |
|-------------------------------------|--------------------------------|---|--|------------|
| LIKELY NH GOP PRIMARY VOTERS | 45% | 25% | 30% | 362 |
| Registered Undeclared | 40% | 24% | 36% | 155 |
| Registered Republican | 49% | 26% | 25% | 200 |
| Democrat/Independent | 53% | 18% | 30% | 77 |
| Republican | 43% | 27% | 30% | 281 |
| Liberal/Moderate | 43% | 26% | 31% | 149 |
| Conservative | 46% | 24% | 29% | 196 |
| Extremely Interested | 49% | 25% | 25% | 210 |
| Very Interested | 42% | 26% | 32% | 118 |
| Somewhat/Not Very Interested | 30% | 14% | 55% | 33 |
| Voted in 2008 & 2012 NH Primaries | 45% | 27% | 28% | 251 |
| Voted in 2008 or 2012 NH Primary | 49% | 27% | 24% | 47 |
| Did Not Vote in Either NH Primary | 43% | 14% | 43% | 63 |
| Will Definitely Vote | 50% | 24% | 26% | 302 |
| Will Vote Unless Emergency | 18% | 30% | 52% | 60 |
| Read Union Leader | 45% | 22% | 33% | 92 |
| Read Boston Globe | 75% | 13% | 12% | 28 |
| Read Local Newspapers | 45% | 25% | 30% | 107 |
| Watch WMUR | 41% | 26% | 33% | 215 |
| Listen to NHPR | 42% | 24% | 33% | 76 |
| Listen to Conserv. Talk Radio | 50% | 24% | 26% | 78 |
| 18 to 34 | 52% | 23% | 25% | 62 |
| 35 to 49 | 37% | 23% | 39% | 90 |
| 50 to 64 | 45% | 26% | 29% | 132 |
| 65 and over | 51% | 27% | 22% | 64 |
| Male | 48% | 24% | 27% | 192 |
| Female | 42% | 25% | 34% | 170 |
| High school or less | 55% | 26% | 19% | 65 |
| Some college | 51% | 17% | 33% | 82 |
| College graduate | 36% | 30% | 34% | 152 |
| Post-graduate | 47% | 22% | 31% | 58 |
| Attend services 1 or more/week | 36% | 28% | 35% | 105 |
| 1-2 times a month | 50% | 21% | 29% | 34 |
| Less often | 48% | 25% | 27% | 121 |
| Never | 48% | 22% | 30% | 94 |
| North Country | 48% | 19% | 32% | 29 |
| Central / Lakes | 49% | 15% | 36% | 62 |
| Connecticut Valley | 39% | 29% | 31% | 38 |
| Mass Border | 44% | 32% | 24% | 118 |
| Seacoast | 50% | 20% | 30% | 52 |
| Manchester Area | 42% | 24% | 35% | 63 |
| First Cong. Dist | 47% | 22% | 32% | 182 |
| Second Cong. Dist | 44% | 27% | 29% | 180 |

**GOP 2016 Primary Support
(Likely 2016 GOP Primary Voters)**

| | Donald <u>Trump</u> | Marco <u>Rubio</u> | Ted <u>Cruz</u> | John <u>Kasich</u> | Jeb <u>Bush</u> | Carly <u>Fiorina</u> | Chris <u>Christie</u> | Someone <u>Else</u> | <u>Undecided</u> | <u>(N=)</u> |
|-------------------------------------|--------------------------------|-------------------------------|----------------------------|-------------------------------|----------------------------|---------------------------------|----------------------------------|--------------------------------|-------------------------|--------------------|
| LIKELY NH GOP PRIMARY VOTERS | 33% | 16% | 14% | 11% | 7% | 6% | 4% | 3% | 6% | 361 |
| Registered Undeclared | 34% | 13% | 13% | 14% | 6% | 8% | 3% | 0% | 8% | 157 |
| Registered Republican | 31% | 19% | 15% | 8% | 8% | 6% | 4% | 4% | 5% | 197 |
| Democrat/Independent | 32% | 4% | 10% | 29% | 6% | 4% | 4% | 3% | 8% | 76 |
| Republican | 33% | 19% | 15% | 6% | 7% | 7% | 3% | 3% | 6% | 282 |
| Liberal/Moderate | 31% | 17% | 6% | 20% | 11% | 3% | 6% | 1% | 6% | 146 |
| Conservative | 31% | 17% | 21% | 4% | 4% | 9% | 2% | 5% | 7% | 198 |
| Extremely Interested | 32% | 17% | 15% | 10% | 6% | 6% | 4% | 3% | 6% | 211 |
| Very Interested | 35% | 17% | 13% | 13% | 5% | 4% | 2% | 3% | 7% | 116 |
| Somewhat/Not Very Interested | 30% | 3% | 12% | 4% | 19% | 17% | 7% | 0% | 8% | 33 |
| Voted in 2008 & 2012 NH Primaries | 29% | 18% | 15% | 12% | 8% | 7% | 3% | 3% | 6% | 250 |
| Voted in 2008 or 2012 NH Primary | 36% | 9% | 11% | 9% | 6% | 7% | 11% | 1% | 10% | 47 |
| Did Not Vote in Either NH Primary | 45% | 13% | 13% | 9% | 3% | 6% | 0% | 4% | 7% | 63 |
| Definitely Decided | 47% | 13% | 14% | 14% | 5% | 2% | 4% | 2% | 0% | 161 |
| Leaning Towards Someone | 22% | 25% | 20% | 8% | 5% | 6% | 5% | 5% | 4% | 88 |
| Still Trying to Decide | 19% | 14% | 11% | 8% | 11% | 13% | 4% | 3% | 18% | 108 |
| Will Definitely Vote | 35% | 19% | 13% | 11% | 5% | 6% | 4% | 2% | 5% | 301 |
| Will Vote Unless Emergency | 23% | 3% | 21% | 8% | 15% | 8% | 5% | 4% | 15% | 60 |
| Read Union Leader | 37% | 25% | 7% | 8% | 6% | 7% | 4% | 2% | 3% | 90 |
| Read Boston Globe | 37% | 17% | 2% | 22% | 7% | 0% | 8% | 0% | 6% | 28 |
| Read Local Newspapers | 36% | 17% | 3% | 11% | 12% | 9% | 6% | 3% | 3% | 106 |
| Watch WMUR | 37% | 15% | 11% | 9% | 9% | 5% | 5% | 2% | 8% | 213 |
| Listen to NHPR | 24% | 20% | 13% | 21% | 4% | 8% | 2% | 4% | 5% | 77 |
| Listen to Conserv. Talk Radio | 44% | 13% | 22% | 1% | 1% | 10% | 3% | 1% | 5% | 77 |
| 18 to 34 | 34% | 12% | 20% | 11% | 8% | 5% | 0% | 3% | 7% | 65 |
| 35 to 49 | 39% | 17% | 14% | 5% | 3% | 7% | 6% | 3% | 6% | 90 |
| 50 to 64 | 26% | 16% | 14% | 14% | 8% | 8% | 4% | 2% | 7% | 130 |
| 65 and over | 38% | 18% | 7% | 14% | 9% | 6% | 1% | 4% | 3% | 61 |
| Male | 33% | 15% | 16% | 12% | 6% | 7% | 4% | 3% | 5% | 191 |
| Female | 32% | 18% | 13% | 10% | 8% | 6% | 4% | 3% | 7% | 170 |
| High school or less | 42% | 21% | 17% | 7% | 2% | 3% | 0% | 2% | 5% | 65 |
| Some college | 34% | 15% | 17% | 6% | 7% | 6% | 3% | 3% | 9% | 82 |
| College graduate | 33% | 15% | 12% | 10% | 9% | 9% | 4% | 3% | 5% | 149 |
| Post-graduate | 21% | 15% | 13% | 23% | 6% | 4% | 6% | 4% | 8% | 61 |
| Attend services 1 or more/week | 19% | 17% | 22% | 5% | 10% | 9% | 1% | 7% | 10% | 105 |
| 1-2 times a month | 25% | 20% | 11% | 23% | 6% | 6% | 0% | 0% | 9% | 33 |
| Less often | 36% | 16% | 12% | 12% | 5% | 6% | 7% | 2% | 6% | 121 |
| Never | 46% | 14% | 10% | 11% | 7% | 5% | 4% | 1% | 3% | 91 |
| North Country | 22% | 19% | 23% | 14% | 0% | 10% | 0% | 5% | 7% | 27 |
| Central / Lakes | 31% | 13% | 15% | 7% | 10% | 4% | 5% | 5% | 10% | 61 |
| Connecticut Valley | 23% | 15% | 8% | 22% | 15% | 5% | 3% | 7% | 2% | 38 |
| Mass Border | 39% | 17% | 11% | 12% | 5% | 5% | 5% | 2% | 5% | 121 |
| Seacoast | 45% | 8% | 16% | 11% | 3% | 12% | 2% | 0% | 4% | 51 |
| Manchester Area | 25% | 24% | 17% | 3% | 7% | 7% | 4% | 2% | 11% | 62 |
| First Cong. Dist | 36% | 14% | 13% | 10% | 7% | 9% | 2% | 1% | 7% | 179 |
| Second Cong. Dist | 29% | 18% | 15% | 11% | 7% | 4% | 5% | 4% | 6% | 182 |

**GOP 2016 Primary – Would NOT Support
(Likely 2016 GOP Primary Voters)**

| | Donald <u>Trump</u> | Ted <u>Cruz</u> | Jeb <u>Bush</u> | Marco <u>Rubio</u> | Carly <u>Fiorina</u> | Someone <u>Else</u> | All <u>Acceptable</u> | Don't <u>Know</u> | (N=) |
|-------------------------------------|--------------------------------|----------------------------|----------------------------|-------------------------------|---------------------------------|--------------------------------|----------------------------------|------------------------------|-------------|
| LIKELY NH GOP PRIMARY VOTERS | 30% | 14% | 12% | 6% | 4% | 12% | 13% | 9% | 357 |
| Registered Undeclared | 25% | 20% | 13% | 6% | 3% | 12% | 10% | 10% | 152 |
| Registered Republican | 34% | 9% | 12% | 6% | 4% | 11% | 15% | 8% | 198 |
| Democrat/Independent | 20% | 19% | 4% | 7% | 4% | 14% | 14% | 17% | 75 |
| Republican | 33% | 12% | 14% | 6% | 4% | 12% | 13% | 7% | 279 |
| Liberal/Moderate | 32% | 18% | 8% | 7% | 5% | 12% | 7% | 10% | 144 |
| Conservative | 30% | 10% | 13% | 5% | 4% | 13% | 17% | 8% | 196 |
| Extremely Interested | 35% | 11% | 12% | 8% | 3% | 12% | 14% | 5% | 207 |
| Very Interested | 23% | 17% | 13% | 3% | 5% | 11% | 11% | 15% | 116 |
| Somewhat/Not Very Interested | 22% | 18% | 7% | 6% | 6% | 16% | 11% | 14% | 33 |
| Voted in 2008 & 2012 NH Primaries | 34% | 11% | 14% | 6% | 4% | 11% | 13% | 6% | 248 |
| Voted in 2008 or 2012 NH Primary | 22% | 28% | 5% | 7% | 0% | 17% | 13% | 9% | 46 |
| Did Not Vote in Either NH Primary | 20% | 12% | 8% | 6% | 8% | 13% | 13% | 20% | 63 |
| Definitely Decided | 25% | 16% | 18% | 8% | 2% | 13% | 13% | 5% | 159 |
| Leaning Towards Someone | 42% | 6% | 10% | 2% | 8% | 14% | 14% | 4% | 88 |
| Still Trying to Decide | 26% | 16% | 5% | 8% | 4% | 10% | 12% | 19% | 109 |
| Will Definitely Vote | 30% | 14% | 13% | 6% | 4% | 12% | 14% | 7% | 297 |
| Will Vote Unless Emergency | 29% | 13% | 9% | 7% | 7% | 12% | 5% | 18% | 60 |
| Read Union Leader | 33% | 13% | 9% | 7% | 6% | 10% | 15% | 7% | 88 |
| Read Boston Globe | 33% | 16% | 9% | 13% | 0% | 3% | 9% | 16% | 26 |
| Read Local Newspapers | 32% | 17% | 7% | 7% | 3% | 12% | 11% | 12% | 105 |
| Watch WMUR | 27% | 16% | 10% | 6% | 5% | 15% | 12% | 9% | 212 |
| Listen to NHPR | 34% | 11% | 15% | 6% | 3% | 15% | 7% | 8% | 75 |
| Listen to Conserv. Talk Radio | 11% | 12% | 29% | 10% | 1% | 18% | 13% | 6% | 77 |
| 18 to 34 | 24% | 20% | 13% | 5% | 5% | 10% | 13% | 12% | 62 |
| 35 to 49 | 34% | 10% | 8% | 10% | 6% | 13% | 8% | 11% | 90 |
| 50 to 64 | 31% | 13% | 15% | 6% | 5% | 11% | 12% | 7% | 129 |
| 65 and over | 31% | 15% | 9% | 4% | 0% | 15% | 19% | 6% | 61 |
| Male | 24% | 13% | 16% | 6% | 5% | 12% | 17% | 6% | 191 |
| Female | 37% | 14% | 7% | 6% | 3% | 13% | 8% | 12% | 166 |
| High school or less | 26% | 7% | 16% | 8% | 4% | 19% | 7% | 13% | 65 |
| Some college | 19% | 16% | 18% | 2% | 4% | 15% | 19% | 8% | 81 |
| College graduate | 33% | 12% | 10% | 6% | 5% | 10% | 14% | 9% | 148 |
| Post-graduate | 41% | 21% | 3% | 11% | 2% | 8% | 7% | 6% | 58 |
| Attend services 1 or more/week | 45% | 6% | 12% | 6% | 3% | 9% | 13% | 5% | 103 |
| 1-2 times a month | 26% | 15% | 13% | 7% | 0% | 9% | 16% | 14% | 34 |
| Less often | 25% | 14% | 9% | 8% | 5% | 13% | 15% | 12% | 121 |
| Never | 22% | 21% | 15% | 4% | 7% | 17% | 7% | 8% | 91 |
| North Country | 22% | 16% | 12% | 4% | 4% | 8% | 20% | 14% | 26 |
| Central / Lakes | 31% | 22% | 11% | 1% | 3% | 11% | 6% | 15% | 62 |
| Connecticut Valley | 37% | 5% | 12% | 8% | 0% | 20% | 13% | 4% | 38 |
| Mass Border | 33% | 13% | 11% | 8% | 9% | 5% | 14% | 6% | 117 |
| Seacoast | 13% | 15% | 14% | 6% | 1% | 26% | 12% | 13% | 52 |
| Manchester Area | 35% | 10% | 12% | 8% | 2% | 12% | 14% | 7% | 62 |
| First Cong. Dist | 26% | 15% | 10% | 7% | 4% | 14% | 14% | 10% | 180 |
| Second Cong. Dist | 33% | 12% | 14% | 5% | 4% | 11% | 12% | 8% | 176 |

**Who will win NH Republican Primary?
(Likely 2016 GOP Primary Voters)**

| | <u>Donald Trump</u> | <u>Ted Cruz</u> | <u>Marco Rubio</u> | <u>John Kasich</u> | <u>Chris Christie</u> | <u>Jeb Bush</u> | <u>Someone Else</u> | <u>Don't Know</u> | <u>(N=)</u> |
|-------------------------------------|-------------------------|---------------------|------------------------|------------------------|---------------------------|---------------------|-------------------------|-----------------------|-------------|
| LIKELY NH GOP PRIMARY VOTERS | 65% | 10% | 9% | 1% | 1% | 0% | 1% | 13% | 361 |
| Registered Undeclared | 66% | 10% | 7% | 1% | 0% | 0% | 1% | 15% | 157 |
| Registered Republican | 64% | 10% | 12% | 1% | 1% | 1% | 0% | 11% | 198 |
| Democrat/Independent | 58% | 14% | 6% | 3% | 0% | 0% | 2% | 16% | 76 |
| Republican | 67% | 9% | 10% | 1% | 1% | 1% | 0% | 12% | 282 |
| Liberal/Moderate | 64% | 8% | 7% | 2% | 1% | 0% | 1% | 17% | 148 |
| Conservative | 65% | 13% | 11% | 0% | 0% | 1% | 0% | 9% | 197 |
| Extremely Interested | 65% | 12% | 10% | 1% | 1% | 0% | 1% | 10% | 212 |
| Very Interested | 64% | 9% | 9% | 1% | 0% | 1% | 0% | 17% | 116 |
| Somewhat/Not Very Interested | 70% | 9% | 5% | 0% | 0% | 0% | 0% | 16% | 33 |
| Voted in 2008 & 2012 NH Primaries | 66% | 11% | 8% | 1% | 0% | 1% | 1% | 11% | 250 |
| Voted in 2008 or 2012 NH Primary | 62% | 4% | 14% | 0% | 3% | 0% | 0% | 17% | 47 |
| Did Not Vote in Either NH Primary | 61% | 14% | 9% | 1% | 0% | 0% | 0% | 15% | 64 |
| Definitely Decided | 70% | 10% | 8% | 2% | 1% | 1% | 0% | 7% | 162 |
| Leaning Towards Someone | 58% | 12% | 14% | 0% | 0% | 0% | 0% | 16% | 88 |
| Still Trying to Decide | 62% | 11% | 7% | 1% | 0% | 0% | 2% | 18% | 107 |
| Will Definitely Vote | 65% | 11% | 10% | 1% | 1% | 1% | 1% | 11% | 303 |
| Will Vote Unless Emergency | 64% | 8% | 8% | 1% | 0% | 0% | 0% | 19% | 59 |
| Read Union Leader | 66% | 9% | 13% | 1% | 1% | 0% | 0% | 10% | 92 |
| Read Boston Globe | 73% | 0% | 7% | 3% | 0% | 2% | 0% | 14% | 28 |
| Read Local Newspapers | 66% | 5% | 9% | 1% | 0% | 1% | 1% | 17% | 107 |
| Watch WMUR | 66% | 8% | 10% | 1% | 1% | 0% | 0% | 13% | 214 |
| Listen to NHPR | 58% | 12% | 8% | 2% | 0% | 0% | 2% | 18% | 79 |
| Listen to Conserv. Talk Radio | 76% | 11% | 4% | 0% | 0% | 1% | 0% | 8% | 78 |
| 18 to 34 | 74% | 7% | 7% | 0% | 0% | 0% | 0% | 12% | 65 |
| 35 to 49 | 69% | 9% | 12% | 0% | 1% | 0% | 2% | 7% | 88 |
| 50 to 64 | 64% | 13% | 6% | 2% | 0% | 0% | 0% | 14% | 131 |
| 65 and over | 56% | 8% | 14% | 2% | 0% | 2% | 0% | 18% | 63 |
| Male | 67% | 11% | 10% | 0% | 1% | 0% | 0% | 9% | 193 |
| Female | 62% | 10% | 8% | 2% | 0% | 0% | 1% | 17% | 168 |
| High school or less | 61% | 13% | 13% | 0% | 0% | 0% | 0% | 12% | 65 |
| Some college | 62% | 16% | 8% | 1% | 1% | 1% | 0% | 12% | 79 |
| College graduate | 70% | 8% | 8% | 0% | 0% | 0% | 0% | 14% | 152 |
| Post-graduate | 62% | 7% | 10% | 2% | 0% | 1% | 3% | 13% | 61 |
| Attend services 1 or more/week | 54% | 16% | 11% | 1% | 0% | 1% | 1% | 17% | 104 |
| 1-2 times a month | 54% | 2% | 14% | 3% | 0% | 0% | 5% | 22% | 34 |
| Less often | 69% | 11% | 7% | 1% | 2% | 0% | 0% | 12% | 120 |
| Never | 76% | 8% | 9% | 1% | 0% | 0% | 0% | 6% | 95 |
| North Country | 59% | 17% | 17% | 0% | 0% | 0% | 0% | 8% | 29 |
| Central / Lakes | 61% | 14% | 13% | 1% | 0% | 0% | 3% | 7% | 61 |
| Connecticut Valley | 63% | 11% | 10% | 2% | 3% | 2% | 0% | 8% | 38 |
| Mass Border | 71% | 7% | 6% | 1% | 0% | 0% | 0% | 15% | 120 |
| Seacoast | 72% | 7% | 2% | 0% | 0% | 1% | 1% | 17% | 52 |
| Manchester Area | 55% | 13% | 15% | 1% | 2% | 0% | 0% | 15% | 62 |
| First Cong. Dist | 66% | 12% | 7% | 1% | 1% | 0% | 0% | 13% | 182 |
| Second Cong. Dist | 64% | 9% | 11% | 1% | 1% | 0% | 1% | 13% | 180 |