



# Index of Texas Archaeology: Open Access Gray Literature from the Lone Star State

---

Volume 2015

Article 23

---

2015

## Caddo Ceramic Vessels from the Womack Site (41LR1), Lamar County, Texas

Timothy K. Perttula

*Center for Regional Heritage Research, Stephen F. Austin State University*

Mark Walters

Follow this and additional works at: <https://scholarworks.sfasu.edu/ita>



Part of the [American Material Culture Commons](#), [Archaeological Anthropology Commons](#), [Environmental Studies Commons](#), [Other American Studies Commons](#), [Other Arts and Humanities Commons](#), [Other History of Art, Architecture, and Archaeology Commons](#), and the [United States History Commons](#)

[Tell us how this article helped you.](#)

---

### Repository Citation

Perttula, Timothy K. and Walters, Mark (2015) "Caddo Ceramic Vessels from the Womack Site (41LR1), Lamar County, Texas," *Index of Texas Archaeology: Open Access Gray Literature from the Lone Star State*: Vol. 2015 , Article 23. <https://doi.org/10.21112/.ita.2015.1.23>

ISSN: 2475-9333

Available at: <https://scholarworks.sfasu.edu/ita/vol2015/iss1/23>

This Article is brought to you for free and open access by SFA ScholarWorks. It has been accepted for inclusion in Index of Texas Archaeology: Open Access Gray Literature from the Lone Star State by an authorized editor of SFA ScholarWorks. For more information, please contact [cdsscholarworks@sfasu.edu](mailto:cdsscholarworks@sfasu.edu).

---

## Caddo Ceramic Vessels from the Womack Site (41LR1), Lamar County, Texas

Creative Commons License



This work is licensed under a [Creative Commons Attribution 4.0 License](https://creativecommons.org/licenses/by/4.0/).

---

# Caddo Ceramic Vessels from the Womack Site (41LR1), Lamar County, Texas

*Timothy K. Perttula and Mark Walters*

---

## INTRODUCTION

The Womack site (41LR1) is an ancestral Caddo settlement situated on an alluvial terrace in a horseshoe bend of the Red River in north central Lamar County in East Texas (Figure 1). Harris et al. (1965) completed the analysis and study of their 1938-mid-1960s investigations at the site, but the findings from the earlier archaeological investigations conducted at the site by the University of Texas (UT) in 1931 have only been recently published (Perttula 2015).

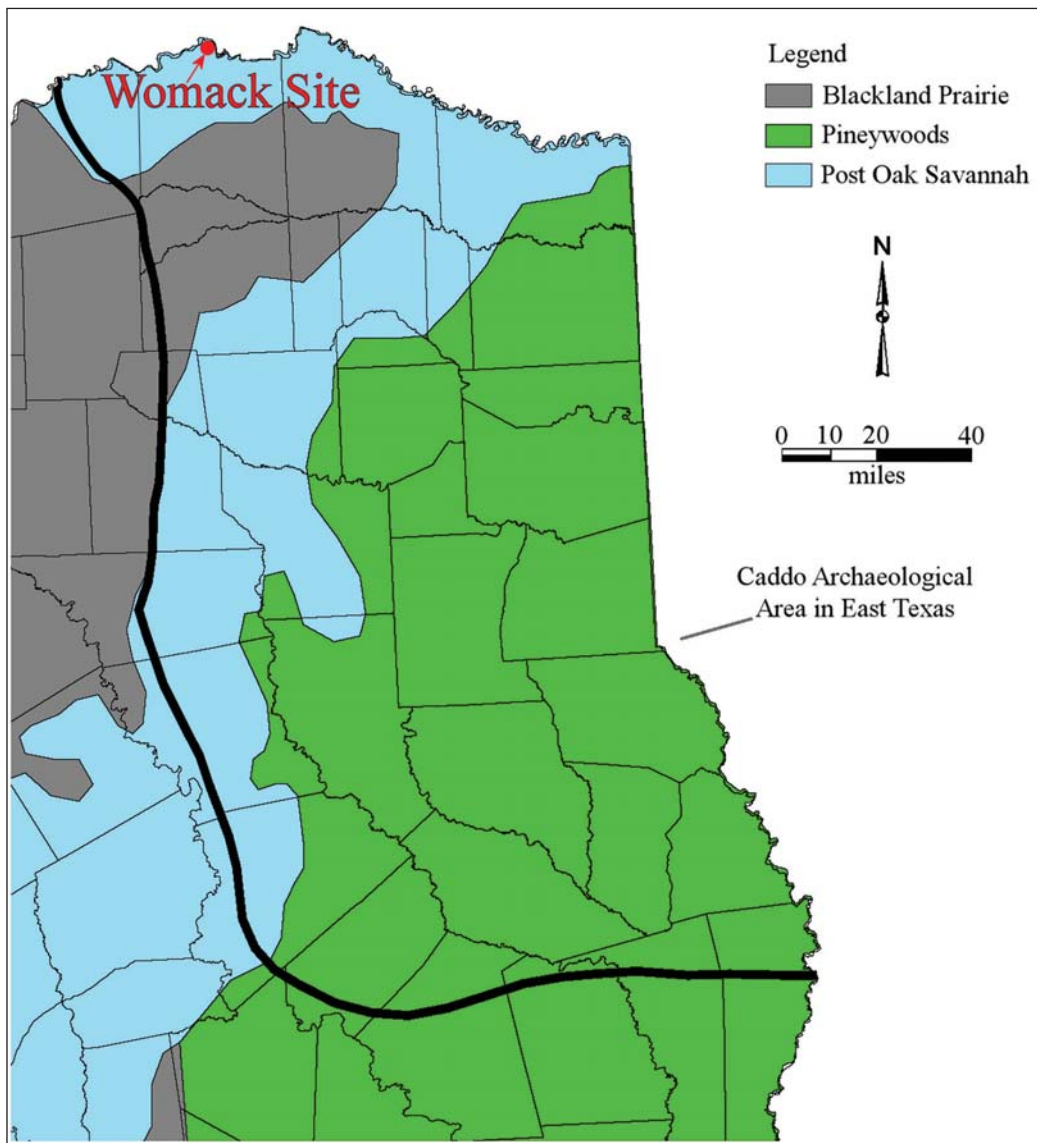


Figure 1. Location of the Womack site (41LR1) in East Texas.

### Vessel Context

UT archaeologists conducted investigations at the Womack site between August 29-September 4, 1931 (Pearce and Jackson 1931), the year following the landowner plowing up a burial with several associated ceramic vessels. In addition to obtaining surface collections, and identifying four distinct midden deposits, the UT work also consisted of the excavation of eight burials in three different parts of the site (Figure 2).

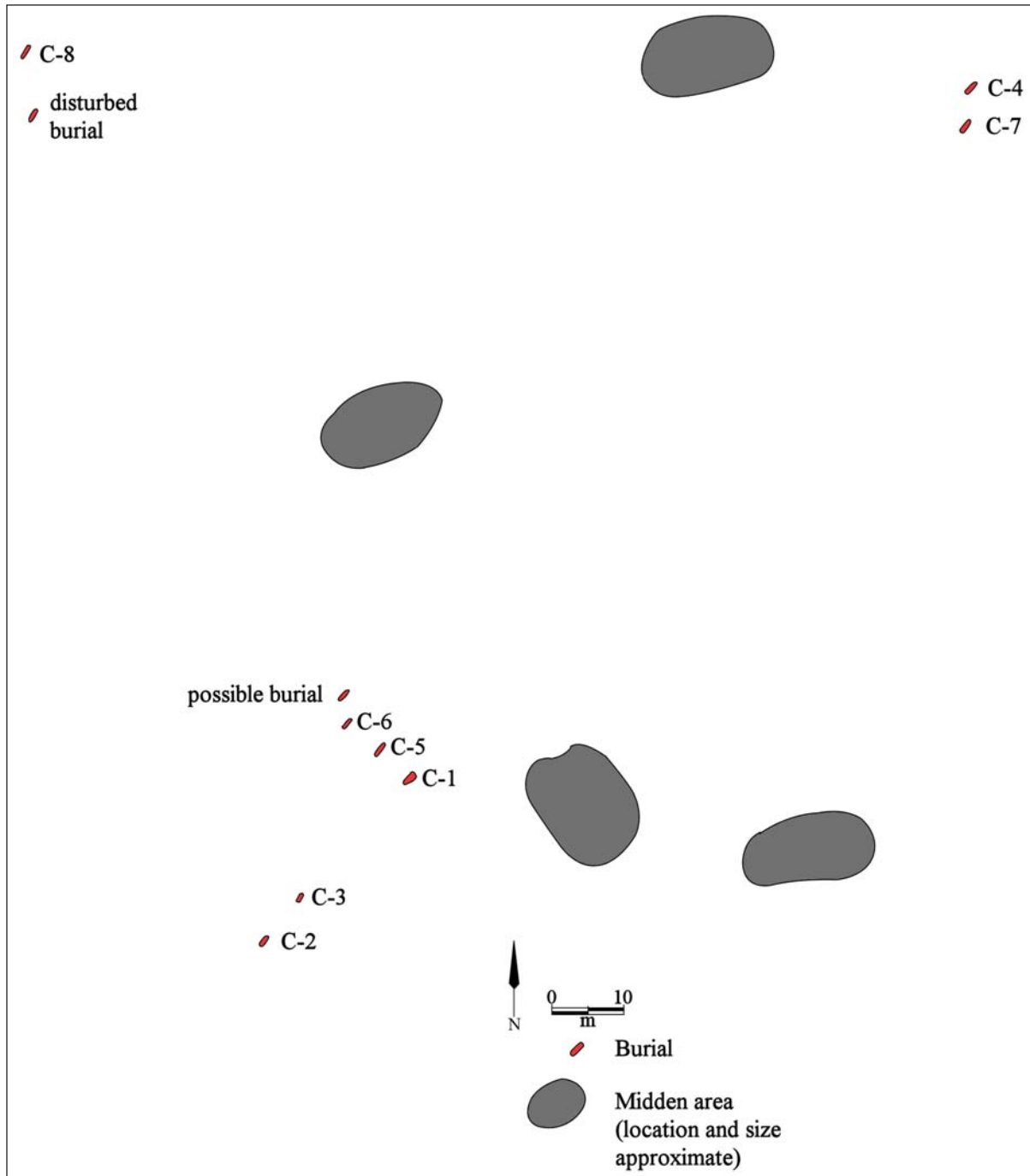


Figure 2. Location of midden deposits and burials excavated by the University of Texas at the Womack site.

The burials include adult men and women as well as children (Table 1). Another possible burial, just north of burial C-6 (see Figure 2), was marked by the recovery of two ceramic vessels found together at ca. 36 cm bs, and there was a disturbed burial ca. 9 m from burial C-8. The disturbed burial had a bison scapula hoe in association.

**Table 1. Characteristics of burials excavated by the University of Texas at the Womack site.**

Burial No.	Orientation	Age and Sex	Funerary Offerings
C-1	extended	child	none
C-2	extended	female, ca. 19	none
C-3	extended	female, ca. 40	4 ceramic vessels
C-4	semi-flexed	male, ca. 50	none
C-5	extended	child, ca. 3	4 ceramic vessels; 2 arrow points; 1 lithic knife; 1 lithic scraper; 1 iron knife; 19 glass beads (14 blue and 5 white, small)
C-6	extended	female, ca. 55	none
C-7	extended	female, ca. 50	none
C-8	flexed	UID	4 lithic scrapers; 1 lithic drill

UID=unidentified

As we document in the remainder of this article, based on Pearce and Jackson (1931) and our examination of the vessel collections, the ceramic vessels in Burial C-3 include a Canton Incised bowl (11.4 cm in diameter), and three plain bowls and jars. The ceramic vessels in Burial C-5 include a small jar with handles, a plain bottle (7.6 cm in height), a Womack Engraved carinated bowl with a Motif C design, and another Womack Engraved (Motif A) bowl with engraved triangles pendant from just under the vessel lip.

## VESSELS

SITE NAME OR SITE NUMBER: Womack

VESSEL NO.: 1; purchased from H. C. Coslin in September 1931

VESSEL FORM: Carinated bowl, globular

NON-PLASTICS AND PASTE: grog

RIM AND LIP FORM: Everted rim and rounded lip

CORE COLOR: A (fired and cooled in an oxidizing environment)

INTERIOR SURFACE COLOR: brown; fire clouds on the rim

EXTERIOR SURFACE COLOR: brown; fire clouds on the body

WALL THICKNESS (IN MM): rim, 5.5 mm

INTERIOR SURFACE TREATMENT: smoothed

EXTERIOR SURFACE TREATMENT: smoothed

HEIGHT (IN CM): 11.4

ORIFICE DIAMETER (IN CM): 16.8

DIAMETER AT BOTTOM OF RIM OR NECK (IN CM): 16.8

BASE DIAMETER (IN CM) AND SHAPE OF BASE: 5.5; circular and concave

ESTIMATED VOLUME (IN LITERS): 1.1

DECORATION (INCLUDING MOTIF AND ELEMENTS WHEN APPARENT): Plain (Figure 3)

PIGMENT USE AND LOCATION ON VESSEL: None

TYPE AND VARIETY (IF KNOWN): Unidentified plain ware



Figure 3. Globular carinated bowl from the Womack site.

SITE NAME OR SITE NUMBER: Womack

VESSEL NO.: 17; Burial C-3

VESSEL FORM: Bowl

NON-PLASTICS AND PASTE: grog

RIM AND LIP FORM: Direct rim and rounded lip

CORE COLOR: G (fired in a reducing environment and cooled in the open air)

INTERIOR SURFACE COLOR: grayish-brown

EXTERIOR SURFACE COLOR: light brown; fire clouds on the rim and body

WALL THICKNESS (IN MM): rim, 4.6

INTERIOR SURFACE TREATMENT: none

EXTERIOR SURFACE TREATMENT: none

HEIGHT (IN CM): 5.5

ORIFICE DIAMETER  
(IN CM): 10.5

DIAMETER AT  
BOTTOM OF RIM  
OR NECK (IN CM): N/A

BASE DIAMETER (IN CM)  
AND SHAPE OF BASE: 5.4;  
circular and flat

ESTIMATED VOLUME  
(IN LITERS): 0.23



Figure 4. Vessel 17, Canton Incised bowl from the Womack site.

DECORATION (INCLUDING MOTIF AND ELEMENTS WHEN APPARENT): The rim of the bowl has 12 alternating incised triangles around the vessel (Figures 4 and 5). The incised triangles, formed by sets of three or four diagonal incised lines on two sides of the triangle, are filled with rows of tool punctations.

PIGMENT USE AND LOCATION ON VESSEL: None

TYPE AND VARIETY (IF KNOWN): Canton Incised

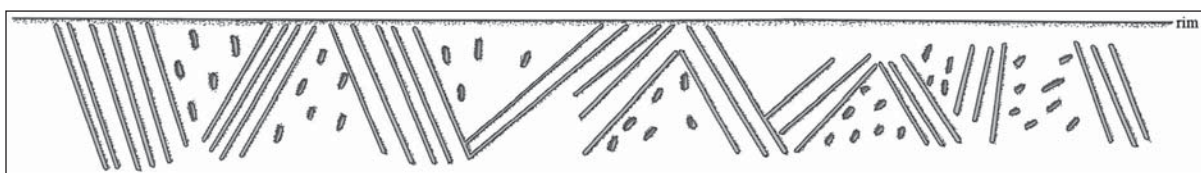


Figure 5. Decorative elements on Canton Incised bowl from the Womack site.



SITE NAME OR SITE NUMBER: Womack

VESSEL NO.: 20; Burial C-3

VESSEL FORM: Oval-shaped bowl

NON-PLASTICS AND PASTE: grog

RIM AND LIP FORM: Direct rim and rounded lip

CORE COLOR: A (fired and cooled in an oxidizing environment)

INTERIOR SURFACE COLOR: brown

EXTERIOR SURFACE COLOR: brown; fire clouds on the body and base

WALL THICKNESS (IN MM): rim, 5.7 mm

INTERIOR SURFACE TREATMENT: smoothed

EXTERIOR SURFACE TREATMENT: smoothed

HEIGHT (IN CM): 4.1

ORIFICE DIAMETER (IN CM): 8.5 x 7.1

DIAMETER AT BOTTOM OF RIM OR NECK (IN CM): N/A

BASE DIAMETER (IN CM) AND SHAPE OF BASE: 5.4 x 3.5

ESTIMATED VOLUME (IN LITERS): 0.1

DECORATION (INCLUDING MOTIF AND ELEMENTS WHEN APPARENT): Plain (Figure 6)

PIGMENT USE AND LOCATION ON VESSEL: None

TYPE AND VARIETY (IF KNOWN):  
unidentified plain ware



Figure 6. Plain bowl from the Womack site.



SITE NAME OR SITE NUMBER: Womack

VESSEL NO.: 22; Burial C-5

VESSEL FORM: Carinated bowl

NON-PLASTICS AND PASTE: grog

RIM AND LIP FORM: Inverted rim and rounded lip

CORE COLOR: G (fired in a reducing environment and cooled in the open air)

INTERIOR SURFACE COLOR: dark grayish-brown

EXTERIOR SURFACE COLOR: brown; fire clouds on the rim, body, and base

WALL THICKNESS (IN MM): rim, 6.5 mm

INTERIOR SURFACE TREATMENT: smoothed

EXTERIOR SURFACE  
TREATMENT: burnished

HEIGHT (IN CM): 12.6

ORIFICE DIAMETER (IN CM): 18.2

DIAMETER AT BOTTOM OF RIM OR  
NECK (IN CM): 18.8

BASE DIAMETER (IN CM) AND SHAPE  
OF BASE: 8.5; circular and concave

ESTIMATED VOLUME (IN LITERS): 1.4



Figure 7. Womack Engraved carinated bowl from the Womack site.

DECORATION (INCLUDING MOTIF AND ELEMENTS WHEN APPARENT): The rim panel is defined by single upper and lower horizontal engraved lines. The panel itself has sets of curvilinear engraved lines on either side of central circle (n=1) to oval-shaped (n=4) elements (Figures 7 and 8). This motif is Womack Engraved Design C (Story et al. 1967:115 and Figure 49c).

PIGMENT USE  
AND LOCATION  
ON VESSEL: none

TYPE AND VARIETY  
(IF KNOWN): Womack  
Engraved

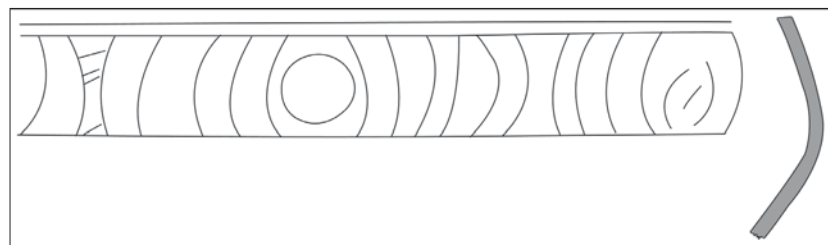


Figure 8. Decorative elements on Womack Engraved carinated bowl from the Womack site.

SITE NAME OR SITE NUMBER: Womack

VESSEL NO.: 23

VESSEL FORM: Bowl

NON-PLASTICS AND PASTE: grog

RIM AND LIP FORM: Inverted rim and rounded lip

CORE COLOR: G (fired in a reducing environment and cooled in the open air)

INTERIOR SURFACE COLOR: dark grayish-brown

EXTERIOR SURFACE COLOR: reddish-brown; fire clouds on the rim and body

WALL THICKNESS (IN MM): rim, 5.9 mm

INTERIOR SURFACE TREATMENT: none

EXTERIOR SURFACE  
TREATMENT: smoothed

HEIGHT (IN CM): 6.5

ORIFICE DIAMETER (IN CM): 9.5

DIAMETER AT BOTTOM OF RIM  
OR NECK (IN CM): 10.3

BASE DIAMETER (IN CM) AND  
SHAPE OF BASE: 6.0; circular  
and rounded

ESTIMATED VOLUME  
(IN LITERS): 0.25

DECORATION (INCLUDING MOTIF AND ELEMENTS WHEN APPARENT): A single horizontal engraved line encircles the vessel below the rim. Pendant from the horizontal line are a series of hatched pendant triangles, hatched ovals, open ovals, and a single rectilinear engraved line that ends at one of the hatched pendant triangles (Figures 9 and 10).

PIGMENT USE AND LOCATION ON VESSEL: None

TYPE AND VARIETY (IF KNOWN): Unidentified fine ware



Figure 9. Engraved bowl from the Womack site.

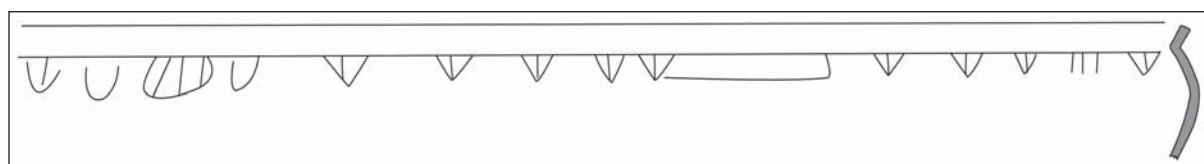


Figure 10. Decorative elements on engraved bowl from the Womack site.

SITE NAME OR SITE NUMBER: Womack

VESSEL NO.: 24; Burial C-5

VESSEL FORM: Bottle with a carinated body and a collared neck (Figures 11a-b)

NON-PLASTICS AND PASTE: bone

RIM AND LIP FORM: Everted rim and a rounded lip

CORE COLOR: B (fired and cooled in a reducing environment)

INTERIOR SURFACE COLOR: grayish-brown

EXTERIOR SURFACE COLOR: grayish-brown; fire clouds on the rim and body

WALL THICKNESS (IN MM): rim, 4.4 mm

INTERIOR SURFACE TREATMENT: none

EXTERIOR SURFACE TREATMENT: smoothed

HEIGHT (IN CM): 7.8

ORIFICE DIAMETER (IN CM): 2.8

DIAMETER AT BOTTOM OF RIM OR  
NECK (IN CM): 3.0; maximum body  
diameter is 6.8 cm

BASE DIAMETER (IN CM) AND  
SHAPE OF BASE: 2.9; circular and flat

ESTIMATED VOLUME (IN LITERS): 0.09

DECORATION (INCLUDING MOTIF AND  
ELEMENTS WHEN APPARENT): Plain

PIGMENT USE AND LOCATION  
ON VESSEL: None

TYPE AND VARIETY (IF KNOWN):  
Unidentified plain ware

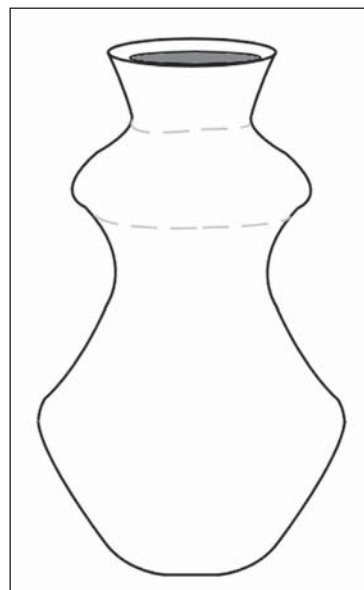
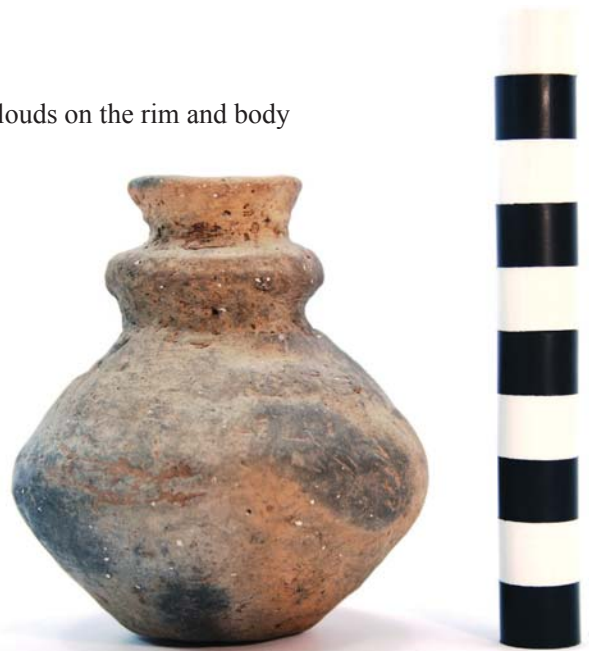


Figure 11. Plain carinated and collared bottle from the Womack site: a, photograph; b, drawing.

SITE NAME OR SITE NUMBER: Womack

VESSEL NO.: 153; Burial C-5

VESSEL FORM: Carinated bowl

NON-PLASTICS AND PASTE: bone

RIM AND LIP FORM: Inverted rim and rounded lip

CORE COLOR: B (fired and cooled in a reducing environment)

INTERIOR SURFACE COLOR: grayish-brown

EXTERIOR SURFACE COLOR: dark grayish-brown; fire clouds on the rim; there is an organic resin on the vessel body

WALL THICKNESS (IN MM): rim, 9.4 mm

INTERIOR SURFACE  
TREATMENT: smoothed

EXTERIOR SURFACE  
TREATMENT: burnished

HEIGHT (IN CM): 19.3

ORIFICE DIAMETER (IN CM): 27.5

DIAMETER AT BOTTOM OF RIM  
OR NECK (IN CM): 29.1

BASE DIAMETER (IN CM) AND  
SHAPE OF BASE: 7.0; circular and concave

ESTIMATED VOLUME (IN LITERS): 4.8

DECORATION (INCLUDING MOTIF AND ELEMENTS WHEN APPARENT): The rim panel is defined by single upper and lower horizontal engraved lines. Pendant from both of these lines are a series of at least 29 (part of the vessel rim is broken, so the exact number cannot be determined) cross-hatched pendant triangles, either pointing downward towards the carination or upwards towards the rim (Figures 12 and 13). This is Design A of Womack Engraved (Story et al. 1967:115 and Figure 49a).

PIGMENT USE AND  
LOCATION ON  
VESSEL: None

TYPE AND VARIETY  
(IF KNOWN):  
Womack Engraved,  
Design A



Figure 12. Womack Engraved carinated bowl from the Womack site.

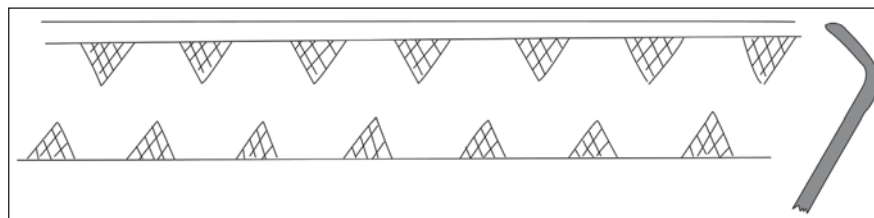


Figure 13. Decorative elements on Womack Engraved, Design A carinated bowl from the Womack site.

SITE NAME OR SITE NUMBER: Womack

VESSEL NO.: 154

VESSEL FORM: Carinated bowl

NON-PLASTICS AND PASTE: grog

RIM AND LIP FORM: Inverted rim and a rounded lip

CORE COLOR: B (fired and cooled in a reducing environment)

INTERIOR SURFACE COLOR: dark grayish-brown

EXTERIOR SURFACE COLOR: dark grayish-brown; fire clouds on the rim; there is an organic resin on the vessel body

WALL THICKNESS (IN MM): rim, 7.9 mm

INTERIOR SURFACE TREATMENT: smoothed

EXTERIOR SURFACE TREATMENT: burnished

HEIGHT (IN CM): 18.4

ORIFICE DIAMETER (IN CM): 26.6

DIAMETER AT BOTTOM OF RIM  
OR NECK (IN CM): 28.6

BASE DIAMETER (IN CM) AND  
SHAPE OF BASE: 8.0; circular and concave

ESTIMATED VOLUME (IN LITERS): 4.4



Figure 14. Womack Engraved carinated bowl from the Womack site.

DECORATION (INCLUDING MOTIF AND ELEMENTS WHEN APPARENT): The rim panel is defined by single upper and lower horizontal engraved lines. The panel itself has a negative meandering scroll motif with a single meandering ticked line running through the center of the scroll (Figures 14 and 15). This is Design B of Womack Engraved (Story et al. 1967:115 and Figure 49b). The meandering scrolls are repeated 11 times around the vessel. They end in hooked arm elements, and one end of the central ticked scroll line begins just below the hooked arms. The upper and lower scroll fill zones each have two negative ovals defined by cross-hatching (Figures 14 and 15).

PIGMENT USE AND  
LOCATION ON  
VESSEL: None

TYPE AND VARIETY  
(IF KNOWN):  
Womack Engraved,  
Design B

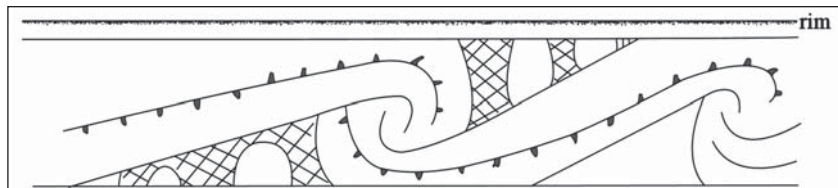


Figure 15. Decorative elements on Womack Engraved, Design B carinated bowl from the Womack site.

## SUMMARY AND CONCLUSIONS

The eight ceramic vessels from the Womack site in the collections of the Texas Archeological Research Laboratory at The University of Texas at Austin are from two burial features of different age in different cemetery areas. One burial feature is estimated to date from ca. A.D. 1100-1300, during the Sanders phase, and the vessels in this burial feature were either plain or an incised-punctated Canton Incised bowl. The other ceramic vessels are from a ca. A.D. 1700-1730 Womack phase burial. They include a plain collared bottle and three inverted rim Womack Engraved carinated bowls.

## ACKNOWLEDGMENTS

We thank Mary Beth Tomka and Jonathan Jarvis of the Texas Archeological Research Laboratory at The University of Texas at Austin and Robert Cast of the Caddo Nation of Oklahoma for access to the Womack site vessel collections. Bo Nelson took the photographs used in this article, and Lance Trask prepared the figures in this article.

## REFERENCES CITED

- Harris, R. K., I. M. Harris, J. C. Blaine, and J. Blaine  
1965 A Preliminary Archeological and Documentary Study of the Womack Site, Lamar County, Texas. *Bulletin of the Texas Archeological Society* 36:287-365.
- Pearce, J. E. and A. T. Jackson  
1931 Field Notes: Excavation on the H. E. Womack Farm, Lamar County, Texas, August 29, 1931 to September 4, 1931. MS on file, Texas Archeological Research Laboratory, The University of Texas at Austin.
- Perttula, T. K.  
2015 The Womack Site (41LR1), an Ancestral Caddo Settlement on the Red River in Lamar County, Texas. *Journal of Northeast Texas Archaeology* 52:i-38.
- Story, D. A., B. Barber, E. Cobb, H. Cobb, R. Coleman, K. Gilmore, R. K. Harris, and N. Hoffrichter  
1967 Pottery Vessels. In "The Gilbert Site: A Norteno Focus Site in Northeast Texas," edited by E. B. Jelks. *Bulletin of the Texas Archeological Society* 37:112-187.