



# Index of Texas Archaeology: Open Access Gray Literature from the Lone Star State

---

Volume 2014

Article 52

---

2014

## Documentation of Ceramic Vessels and Projectile Points from the C. D. Marsh Site (41HS269) in the Sabine River Basin

Timothy K. Perttula

*Center for Regional Heritage Research, Stephen F. Austin State University*

Robert Z. Selden

Bo Nelson

Follow this and additional works at: <https://scholarworks.sfasu.edu/ita>



Part of the [American Material Culture Commons](#), [Archaeological Anthropology Commons](#), [Environmental Studies Commons](#), [Other American Studies Commons](#), [Other Arts and Humanities Commons](#), [Other History of Art, Architecture, and Archaeology Commons](#), and the [United States History Commons](#)

[Tell us](#) how this article helped you.

---

### Repository Citation

Perttula, Timothy K.; Selden, Robert Z.; and Nelson, Bo (2014) "Documentation of Ceramic Vessels and Projectile Points from the C. D. Marsh Site (41HS269) in the Sabine River Basin," *Index of Texas Archaeology: Open Access Gray Literature from the Lone Star State*: Vol. 2014 , Article 52. <https://doi.org/10.21112/ita.2014.1.51>

ISSN: 2475-9333

Available at: <https://scholarworks.sfasu.edu/ita/vol2014/iss1/52>

This Article is brought to you for free and open access by SFA ScholarWorks. It has been accepted for inclusion in Index of Texas Archaeology: Open Access Gray Literature from the Lone Star State by an authorized editor of SFA ScholarWorks. For more information, please contact [cdsscholarworks@sfasu.edu](mailto:cdsscholarworks@sfasu.edu).

---

## Documentation of Ceramic Vessels and Projectile Points from the C. D. Marsh Site (41HS269) in the Sabine River Basin

Creative Commons License



This work is licensed under a [Creative Commons Attribution 4.0 License](https://creativecommons.org/licenses/by/4.0/).

---

# Documentation of Ceramic Vessels and Projectile Points from the C. D. Marsh Site (41HS269) in the Sabine River Basin

*Timothy K. Perttula, Robert Z. Selden, Jr., and Bo Nelson*

---

## INTRODUCTION

A total of at least eight Caddo burials were excavated at the C. D. Marsh site on Eight Mile Creek, a southward-flowing tributary to the Sabine River (Figure 1), by Buddy C. Jones in 1959-1960. This includes Burial 1, an historic (dating after ca. A.D. 1685) Nadaco Caddo burial (Jones 1968:89); European trade goods found with this burial include two small silver disks. The other burials (Burials 2-8) are part of an earlier Caddo cemetery that is thought to be associated with the ca. A.D. 1350-17<sup>th</sup> century Pine Tree Mound community along the Sabine River and its tributaries (Fields and Gadus 2012:663 and Figure 9.10; Griffith et al. 2012:65, 78). Jones (1968:85) suggests that these latter burials are from a ca. A.D. 1200-1500 Caddo cemetery.

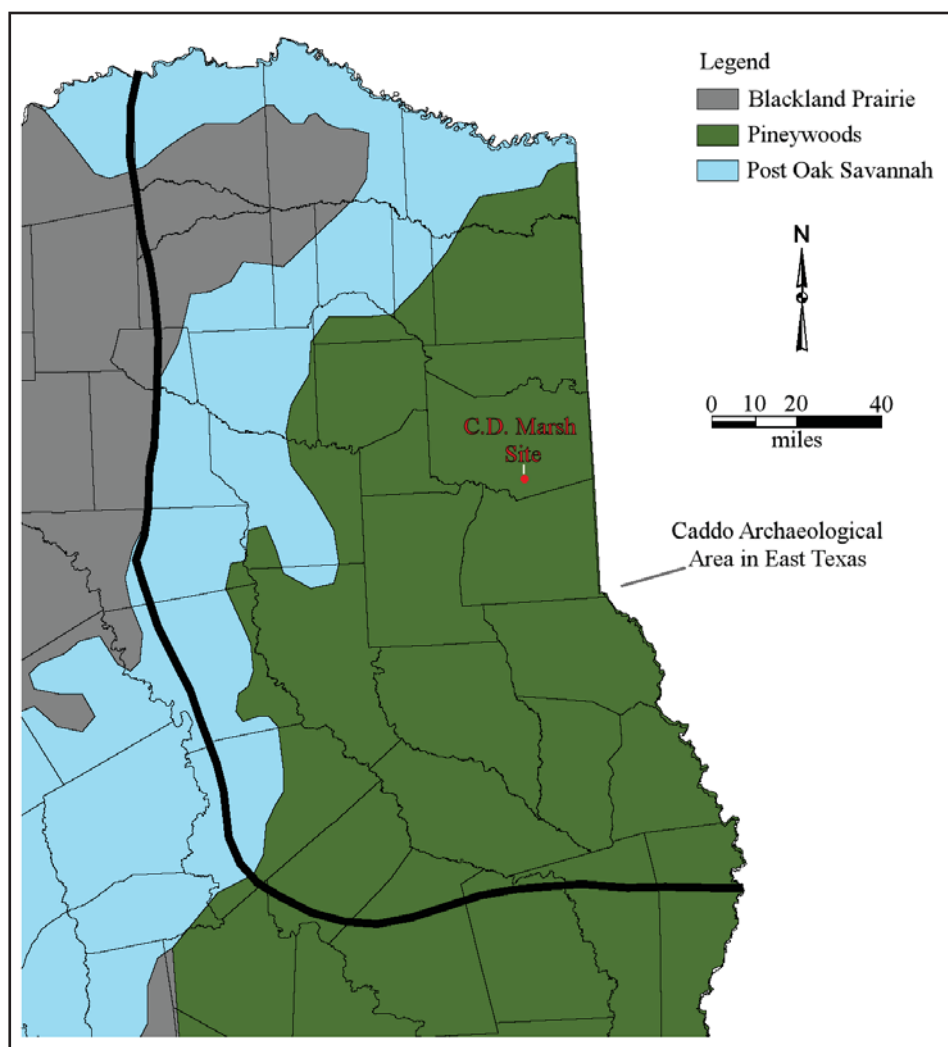


Figure 1. The location of the C. D. Marsh site in East Texas. Figure prepared by Lance Trask.

According to Jones (1968:Figure 6) and notes on file at the museum, Burials 2-8 are located ca. 120 m east-southeast from the one Historic Caddo burial at the site. The burials were placed in extended supine position in north-south oriented pits in rows, with the head of the deceased at the southern end of the burial and facing north. Funerary offerings included ceramic vessels and mussel shells. In this article, we describe eight ceramic vessels in the Gregg County Historical Museum collections from Burials 1, 4, and 7, as well as projectile points from habitation contexts at the C. D. Marsh site; the location of Burial 7 relative to Burial 4 is not known.

There are also six other ceramic vessels from the ca. A.D. 1200-1500 burials at the site that are unassociated funerary objects in the Gregg County Historical Museum collections. This includes one vessel each from Burials 5 and 8; the provenience of the other vessels at the site is unknown. These vessels are documented in Perttula et al. (2013).

One of the unassociated funerary object ceramic vessels at the C. D. Marsh site is a Ripley Engraved, var. *McKinney* carinated bowl. Such vessels would not be expected in a ca. A.D. 1200-1500 Caddo cemetery, and although this type of fine ware is commonly seen on post-A.D. 1600 Titus phase sites in the region, it is rarely found in association with European trade goods. Therefore, it may represent a burial from a third temporal component (ca. A.D. 1600-1685) at the site.

### BURIALS 1, 4, AND 7

Burial 1 is the historic Nadaco Caddo burial at the C. D. Marsh site. The burial was that of an adult individual placed in an extended supine position in an east-west oriented grave; the head of the individual faced to the west. Jones (1968:89) notes that six ceramic vessels were placed in the grave in a cluster around and above the head; a sketch map of Burial 1 in the Gregg County Historical Museum files shows a seventh vessel—presumably the compound bowl mentioned by Jones (1968:88)—by the right foot of the deceased. Five of these vessels have been identified in the Gregg County Historical Museum collections. The two silver disks were found on either side of the head, and were probably ear ornaments.

Burial 4 is that of an adult Caddo individual placed in an extended supine position, but with its legs akimbo, in a pit oriented north-south; the head of the deceased would have faced to the north. A 1960 sketch map by Jones shows that the deceased was accompanied by four ceramic vessels, one by the head and three along the right arm; two of these vessels have been identified in the Gregg County Historical Museum collections.

There is no information available about Burial 7 at the C. D. Marsh site in the notes and records of the Gregg County Historical Museum, except for one ceramic vessel, various soil samples from the pelvis and cranium areas, and fragments of human remains from an individual of unknown age and sex.

### Vessels

SITE NAME OR SITE NUMBER: C. D. Marsh

VESSEL NO.: 2003.08.269, Burial 1

NON-PLASTICS AND PASTE: grog and bone

VESSEL FORM: Bowl

RIM AND LIP FORM: Direct rim and rounded lip

CORE COLOR: F (fired in a reducing environment and cooled in the open air)

INTERIOR SURFACE COLOR: dark reddish-brown; fire clouds on the rim, body, and base

EXTERIOR SURFACE COLOR: dark yellowish-brown; fire clouds on the rim, body, and base

WALL THICKNESS (RIM, BODY, AND BASE IN MM): rim, 4.9 mm

INTERIOR SURFACE TREATMENT: burnished

EXTERIOR SURFACE TREATMENT: burnished

HEIGHT (IN CM): 10.2

ORIFICE DIAMETER (IN CM): 14.0



Figure 2. Natchitoches Engraved bowl from the C. D. Marsh site, Burial 1.

DIAMETER AT BOTTOM OF RIM OR NECK (IN CM): 13.7

BASE DIAMETER (IN CM) AND SHAPE OF BASE: 7.0; circular and flat

ESTIMATED VOLUME (IN LITERS): 0.57

DECORATION (INCLUDING MOTIF AND ELEMENTS WHEN APPARENT): The rim area of the bowl has horizontal interlocking scrolls, with tick marks on each of the four scroll lines. The scrolls are interlocked by engraved brackets. The remainder of the bowl has an engraved circle motif repeated three times on the vessel. The motif consists of an outer cross-hatched circle and an inner open circle with tick marks. Each of the circle motifs are divided by single vertical lines with small excised pendant triangles (Figures 2 and 3a; see also Jones 1968:Plate 16b).

PIGMENT USE AND LOCATION ON VESSEL: none

TYPE AND VARIETY [IF KNOWN]: Natchitoches Engraved

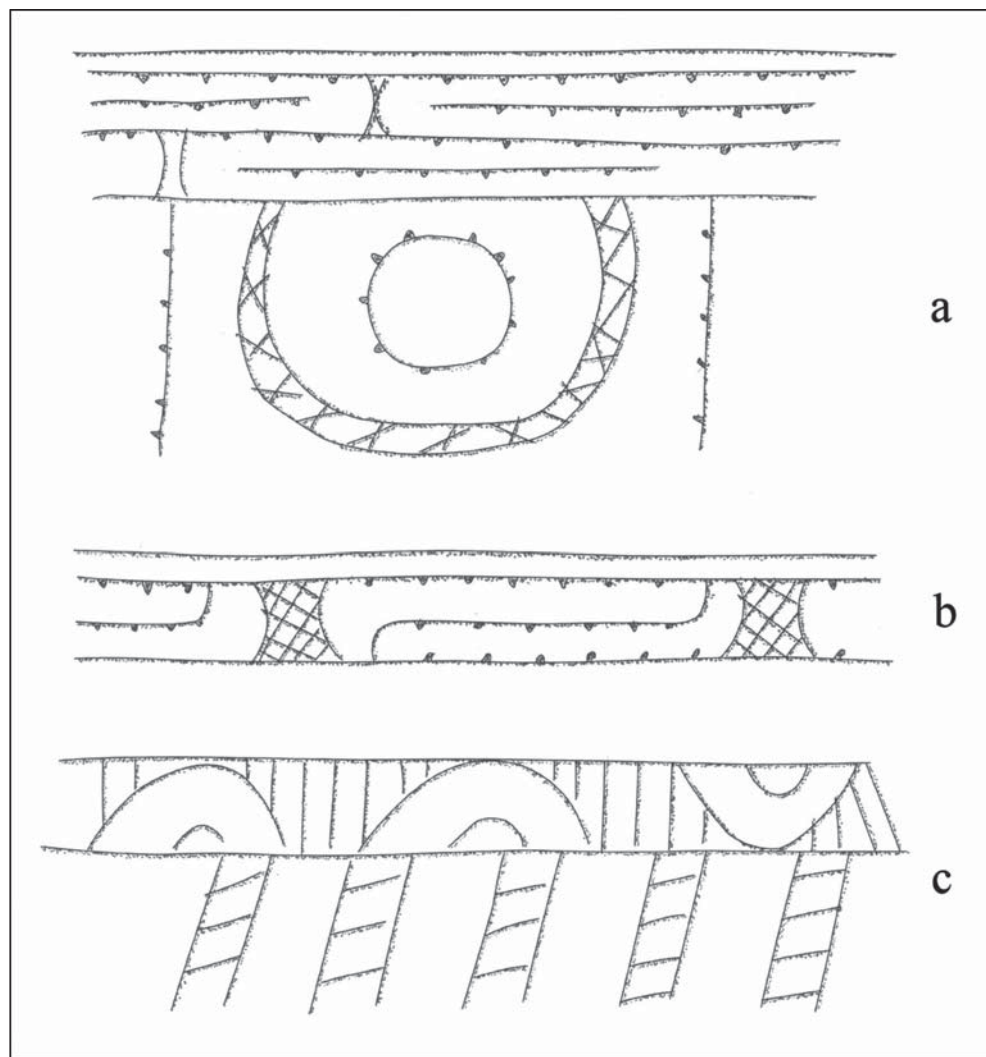


Figure 3. Decorative motifs on selected vessels: a, Natchitoches Engraved bowl, Burial 1; b, Simms Engraved carinated bowl, Burial 1; c, engraved carinated bowl, Burial 7.

SITE NAME OR SITE NUMBER: C. D. Marsh

VESSEL NO.: 2003.08.295, Burial 1 (HC 48/59)

NON-PLASTICS AND PASTE: grog and sandy paste

VESSEL FORM: Bottle

RIM AND LIP FORM: Direct rim and rounded lip

CORE COLOR: H (fired in a reducing environment and cooled in the open air)

INTERIOR SURFACE COLOR: reddish-brown

EXTERIOR SURFACE COLOR: dark grayish-brown

WALL THICKNESS (RIM, BODY, AND BASE  
IN MM): rim, 4.0 mm

INTERIOR SURFACE TREATMENT: none

EXTERIOR SURFACE TREATMENT: smoothed

HEIGHT (IN CM): 4.6

ORIFICE DIAMETER (IN CM): 2.1

DIAMETER AT BOTTOM OF RIM OR NECK  
(IN CM): 2.2

BASE DIAMETER (IN CM) AND SHAPE OF  
BASE: 3.1; circular and flat

ESTIMATED VOLUME (IN LITERS): 0.04

DECORATION (INCLUDING MOTIF AND ELEMENTS WHEN APPARENT): The vessel body has an engraved hooked arm motif repeated four times around the body. The hooked arm motif consists of upper and lower arms that hook around each other, but do not touch. The lower hooked arm element has a lower diagonal hatched zone, while the upper hooked arm element is cross-hatched (Figure 4; see also Jones 1968:Plate 16c).

PIGMENT USE AND LOCATION ON VESSEL: none

TYPE AND VARIETY [IF KNOWN]: cf. Taylor Engraved



Figure 4. cf. Taylor Engraved bottle from the C. D. Marsh site, Burial 1.



SITE NAME OR SITE NUMBER: C. D. Marsh

VESSEL NO.: 2003.08.432, Burial 4

NON-PLASTICS AND PASTE: grog

VESSEL FORM: Jar or Deep Bowl

RIM AND LIP FORM: Direct rim and rounded lip

CORE COLOR: B (fired and cooled in a reducing environment)

INTERIOR SURFACE COLOR: dark grayish-brown; fire clouds on the rim, body, and base

EXTERIOR SURFACE COLOR: dark grayish-brown; fire clouds on the rim, body, and base

WALL THICKNESS (RIM, BODY, AND BASE IN MM): rim, 4.2 mm

INTERIOR SURFACE TREATMENT: smoothed

EXTERIOR SURFACE TREATMENT: smoothed

HEIGHT (IN CM): 15.8

ORIFICE DIAMETER (IN CM): 15.5

DIAMETER AT BOTTOM OF RIM OR NECK (IN CM): 13.2

BASE DIAMETER (IN CM) AND SHAPE OF BASE: 9.7; circular and flat

ESTIMATED VOLUME (IN LITERS): 1.5

DECORATION (INCLUDING MOTIF AND ELEMENTS WHEN APPARENT): There are two horizontal incised panels on the rim, each filled with randomly-placed tool punctations. Just below the lower incised panel is another horizontal incised line (Figure 5).

PIGMENT USE AND LOCATION ON VESSEL: none

TYPE AND VARIETY [IF KNOWN]: Unidentified utility ware



Figure 5. Incised-punctated jar or deep bowl from the C. D. Marsh site, Burial 4.



SITE NAME OR SITE NUMBER: C. D. Marsh

VESSEL NO.: 2003.08.624, Burial 1

NON-PLASTICS AND PASTE: grog and bone

VESSEL FORM: Carinated bowl

RIM AND LIP FORM: Inverted rim and rounded lip

CORE COLOR: G (fired in a reducing environment and cooled in the open air)

INTERIOR SURFACE COLOR: dark grayish-brown

EXTERIOR SURFACE COLOR: dark reddish-brown

WALL THICKNESS (RIM, BODY, AND BASE IN MM): rim, 5.9 mm

INTERIOR SURFACE TREATMENT:  
smoothed

EXTERIOR SURFACE TREATMENT:  
burnished

HEIGHT (IN CM): 13.0

ORIFICE DIAMETER (IN CM): 24.1

DIAMETER AT BOTTOM OF RIM OR  
NECK (IN CM): 24.7

BASE DIAMETER (IN CM) AND SHAPE OF BASE: 7.6; circular and rounded

ESTIMATED VOLUME (IN LITERS): 1.9

DECORATION (INCLUDING MOTIF AND ELEMENTS WHEN APPARENT): The rim has an engraved horizontal and curvilinear scroll motif repeated four times around the vessel. The scroll line has small tick marks, as do the upper and lower horizontal engraved lines of the panel. Each scroll motif is divided from the other by wide cross-hatched engraved brackets (Figure 6 and Figure 3b; see also Jones 1968:Plate 16a).

PIGMENT USE AND LOCATION ON VESSEL: red pigment in engraved lines

TYPE AND VARIETY [IF KNOWN]: Simms Engraved



Figure 6. Simms Engraved carinated bowl from the C. D. Marsh site, Burial 1.

SITE NAME OR SITE NUMBER: C. D. Marsh

VESSEL NO.: 2003.08.662, Burial 4

NON-PLASTICS AND PASTE: grog

VESSEL FORM: Carinated bowl

RIM AND LIP FORM: Inverted rim and flat lip

CORE COLOR: F (fired in a reducing environment and cooled in the open air)

INTERIOR SURFACE COLOR: reddish-brown; fire clouds on the rim

EXTERIOR SURFACE COLOR: reddish-brown; fire clouds on the rim, body, and base

WALL THICKNESS (RIM, BODY,  
AND BASE IN MM): rim, 5.5 mm;  
body, 6.8 mm; base, 10.4 mm

INTERIOR SURFACE TREATMENT:  
smoothed

EXTERIOR SURFACE TREATMENT:  
smoothed

HEIGHT (IN CM): 7.4

ORIFICE DIAMETER (IN CM): 17.5

DIAMETER AT BOTTOM OF RIM OR NECK (IN CM): 18.0

BASE DIAMETER (IN CM) AND SHAPE OF BASE: 7.9; circular and flat

ESTIMATED VOLUME (IN LITERS): 0.77

DECORATION (INCLUDING MOTIF AND ELEMENTS WHEN APPARENT): The rim has an opposed diagonal incised panel motif filled with tool punctates (Figure 7). The panels are repeated eight times around the vessel.

PIGMENT USE AND LOCATION ON VESSEL: none

TYPE AND VARIETY [IF KNOWN]: Pennington Punctated-Incised (see Suhm and Jelks 1962:Plate 61b)



Figure 7. Pennington Punctated-Incised carinated bowl from the C. D. Marsh site, Burial 4.

SITE NAME OR SITE NUMBER: C. D. Marsh

VESSEL NO.: 2003.08.692, Burial 1

NON-PLASTICS AND PASTE: bone

VESSEL FORM: Jar

RIM AND LIP FORM: Everted rim and rounded lip

CORE COLOR: G (fired in a reducing environment and cooled in the open air)

INTERIOR SURFACE COLOR: grayish-brown

EXTERIOR SURFACE COLOR: light grayish-brown; fire clouds on the rim and body

WALL THICKNESS (RIM, BODY, AND BASE IN MM): rim, 7.4 mm

INTERIOR SURFACE TREATMENT: smoothed

EXTERIOR SURFACE TREATMENT: none

HEIGHT (IN CM): 17.6

ORIFICE DIAMETER (IN CM): 15.0

DIAMETER AT BOTTOM OF RIM OR NECK (IN CM): 14.4

BASE DIAMETER (IN CM) AND SHAPE OF BASE: 4.9; circular and rounded

ESTIMATED VOLUME (IN LITERS): 2.4

DECORATION (INCLUDING MOTIF AND ELEMENTS WHEN APPARENT): There are four horizontal rows of neck banding on the jar rim (Figure 8; see also Jones 1968:Plate 16f).

PIGMENT USE AND LOCATION ON VESSEL: none

TYPE AND VARIETY [IF KNOWN]: La Rue Neck Banded



Figure 8. La Rue Neck Banded jar from the C. D. Marsh site, Burial 1.

SITE NAME OR SITE NUMBER: C. D. Marsh

VESSEL NO.: 2003.08.708, Burial 1 (HC 48)

NON-PLASTICS AND PASTE: grog and bone

VESSEL FORM: Jar

RIM AND LIP FORM: Everted rim and rounded lip

CORE COLOR: F (fired in a reducing environment and cooled in the open air)

INTERIOR SURFACE COLOR: dark yellowish-brown; fire clouds on the rim and body

EXTERIOR SURFACE COLOR: dark yellowish-brown; fire clouds on the body

WALL THICKNESS (RIM, BODY, AND BASE  
IN MM): rim, 4.2 mm

INTERIOR SURFACE TREATMENT: none

EXTERIOR SURFACE TREATMENT: none

HEIGHT (IN CM): 7.4

ORIFICE DIAMETER (IN CM): 6.6

DIAMETER AT BOTTOM OF RIM OR NECK  
(IN CM): 6.4

BASE DIAMETER (IN CM) AND SHAPE OF  
BASE: 3.1; circular and rounded

ESTIMATED VOLUME (IN LITERS): 0.29

DECORATION (INCLUDING MOTIF AND ELEMENTS WHEN APPARENT): The rim has three rows of tool punctates. The vessel body has incised panels filled with vertical, diagonal, and opposed diagonal lines (Figure 9; see also Jones 1968:Plate 16d).

PIGMENT USE AND LOCATION ON VESSEL: none

TYPE AND VARIETY [IF KNOWN]: Unidentified utility ware, possible Emory Punctated-Incised



Figure 9. Punctated-incised jar from the C. D. Marsh site, Burial 1.

SITE NAME OR SITE NUMBER: C. D. Marsh

VESSEL NO.: 2003.08.872, Burial 7 (HC 48)

NON-PLASTICS AND PASTE: grog

VESSEL FORM: Carinated bowl

RIM AND LIP FORM: Direct rim and rounded lip

CORE COLOR: F (fired in a reducing environment and cooled in the open air)

INTERIOR SURFACE COLOR: reddish-brown

EXTERIOR SURFACE COLOR: dark reddish-brown

WALL THICKNESS (RIM, BODY, AND  
BASE IN MM): rim, 5.6 mm

INTERIOR SURFACE TREATMENT:  
smoothed

EXTERIOR SURFACE TREATMENT:  
smoothed

HEIGHT (IN CM): 5.7

ORIFICE DIAMETER (IN CM): 16.5

DIAMETER AT BOTTOM OF RIM OR  
NECK (IN CM): 16.1

BASE DIAMETER (IN CM) AND SHAPE OF BASE: 7.2; circular and rounded

ESTIMATED VOLUME (IN LITERS): 0.56

DECORATION (INCLUDING MOTIF AND ELEMENTS WHEN APPARENT): The rim has two different sets of engraved motifs stacked upon one another. The upper motif consists of six repeating sets of concentric semi-circles surrounded by a continuous series of vertical engraved lines. The lower part of the rim panel has diagonal hatched zones that are repeated 21 times around the vessel (Figure 10; see also Figure 3c).

PIGMENT USE AND LOCATION ON VESSEL: none

TYPE AND VARIETY [IF KNOWN]: Unidentified fine ware



Figure 10. Engraved carinated bowl from the C. D. Marsh site, Burial 7.

## PROJECTILE POINTS

Several dart points in the C. D. Marsh collection document some use of the site during the Woodland and/or Late Archaic periods (Figure 11). This includes one Godley point of brownish-red chert; two Kent points of brown and red chert; and four Gary points. The Gary points are made from a local red (n=1) and brown (n=2) chert as well as a non-local gray novaculite. The stem widths on the Gary points range from 9.0-15.0 mm, indicating these are post-A.D. 200 varieties of Gary points (cf. Schambach 1982, 1998). There is also a single parallel stemmed dart point of brown chert in the collection.



Figure 11. Dart points from the C. D. Marsh site: a, Godley; b, straight-stemmed; c-d, Kent; e-h, Gary.

The arrow points from the C. D. Marsh site habitation areas (and associated with Burials 2-8) include Bonham (n=6), Perdiz (n=1), and unidentified contracting stem (n=2), as well as two arrow point preforms (Figure 12). About 78% of the arrow points are made from local brown and red chert, but one Perdiz and one Bonham point are made from non-local grayish-brown and dark gray chert. One of the preforms is made from a gray novaculite (Figure 12c).



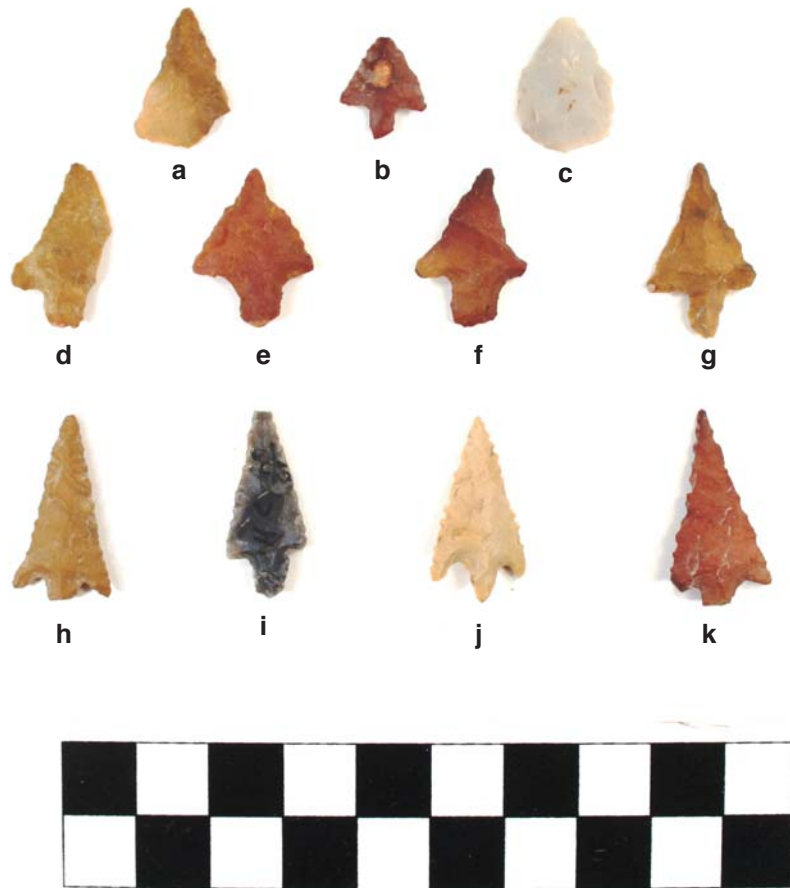


Figure 12. Arrow points from the C. D. Marsh site: a, c, preforms; b, d-g, i, Bonham; h, k, unidentified contracting stem; j, Perdiz.

### SUMMARY AND CONCLUSIONS

Investigations of the C. D. Marsh site by Buddy Jones in 1959 and 1960 led to the excavation of eight Caddo burials and the identification of a habitation area. One of the burials (Burial 1) dates to the post-A.D. 1685 era, while the others (Burials 2-8) appear to be part of a ca. A.D. 1200-1450 cemetery; the habitation deposits at the site also appear to be contemporaneous with this ancestral Caddo cemetery.

The ceramic vessels placed as funerary offerings in Burial 1 are consistent with those expected in an Historic Caddo period grave in Kinsloe focus/phase components in the Sabine River basin: a Natchitoches Engraved bowl, a Simms Engraved carinated bowl, a Taylor Engraved bottle, and two jars: La Rue Neck Banded and a probable Emory Punctated-Incised vessel. The silver disks from this burial are not available for study.

The vessels placed as funerary offerings in the ca. A.D. 1200-1450 cemetery are more difficult to characterize. The vessels discussed here include a Pennington Punctated-Incised carinated bowl, another incised-punctated jar or deep bowl with horizontal incised panels filled with punctations, and an engraved carinated bowl with motifs seen in Middle Caddo contexts in other East Texas sites (cf. Hart and Perttula 2010): hatched zones and ladders and concentric ovals. Vessels from Burials 5 and 8 in the Gregg County Historical Museum include a bowl with a hatched and cross-hatched engraved motif and another Pennington Punctated-Incised carinated bowl (Perttula et al. 2013). Together, the two Pennington Punctated-Incised vessels from this earlier cemetery suggest that at least some of the interments there date to no later than ca. A.D. 1300 (cf. Story 2000).



## ACKNOWLEDGMENTS

We thank Patti Haskins of the Gregg County Historical Museum for her help in documenting the C. D. Marsh collection at the museum.

## REFERENCES CITED

Fields, R. C. and E. F. Gadus (editors)

2012 *Archeology of the Nadaco Caddo: The View from the Pine Tree Mound Site (41HS15), Harrison County, Texas*. 2 Vols. Reports of Investigations No. 164. Prewitt and Associates, Inc., Austin.

Griffith, T. B., R. C. Fields, S. L. Katauskas, and A. E. Dase

2012 *Archeological and Historical Resources Surveys of 2,144 Acres in the Proposed Marshall Mine, Harrison and Panola Counties, Texas*. Reports of Investigations No. 163. Prewitt and Associates, Inc., Austin.

Hart, J. P. and T. K. Perttula

2010 The Washington Square Mound Site and a Southeastern Ceremonial Complex Style Zone among the Caddo of Northeastern Texas. *Midcontinental Journal of Archaeology* 35(2):199-228.

Jones, B. C.

1968 The Kinsloe Focus: A Study of Seven Historic Caddoan Sites in Northeast Texas. Master's thesis, Department of Anthropology, University of Oklahoma, Norman.

Perttula, T. K., R. Z. Selden, Jr., and B. Nelson

2013 *Documentation of Unassociated Ceramic Vessel Funerary Objects in the Gregg County Historical Museum Collections from Sites in Gregg, Harrison, and Panola Counties in East Texas*. Historic Preservation Program, Caddo Nation of Oklahoma, Binger, in press.

Schambach, F. F.

1982 An Outline of Fourche Maline Culture in Southwest Arkansas. In *Arkansas Archeology in Review*, edited by N. L. Trubowitz and M. D. Jeter, pp. 132-197. Research Series No. 15. Arkansas Archeological Survey, Fayetteville.

1998 *Pre-Caddoan Cultures of the Trans-Mississippi South*. Research Series 53. Arkansas Archeological Survey, Fayetteville.

Story, D. A.

2000 Introduction. In *The George C. Davis Site, Cherokee County, Texas*, by H. P. Newell and A. D. Krieger, pp. 1-31. 2nd Edition. Society for American Archaeology, Washington, D.C.

Suhm, D. A. and E. B. Jelks (editors)

1962 *Handbook of Texas Archeology: Type Descriptions*. Special Publication No. 1, Texas Archeological Society, and Bulletin No. 4, Texas Memorial Museum, Austin. Reprinted in 2009, Gustav's Library, Davenport, Iowa.