



# Index of Texas Archaeology: Open Access Gray Literature from the Lone Star State

---

Volume 2015

Article 15

---


2015

## Revisiting a Historic Manuscript: Vere Huddleston's Report on East Place (3CL21) Excavations

Mary B. Trubitt  
*Unknown*

Linda Evans

Follow this and additional works at: <https://scholarworks.sfasu.edu/ita>

 Part of the [American Material Culture Commons](#), [Archaeological Anthropology Commons](#), [Environmental Studies Commons](#), [Other American Studies Commons](#), [Other Arts and Humanities Commons](#), [Other History of Art, Architecture, and Archaeology Commons](#), and the [United States History Commons](#)

[Tell us how this article helped you.](#)

---

### Repository Citation

Trubitt, Mary B. and Evans, Linda (2015) "Revisiting a Historic Manuscript: Vere Huddleston's Report on East Place (3CL21) Excavations," *Index of Texas Archaeology: Open Access Gray Literature from the Lone Star State*: Vol. 2015 , Article 15. <https://doi.org/10.21112/.ita.2015.1.15>

ISSN: 2475-9333

Available at: <https://scholarworks.sfasu.edu/ita/vol2015/iss1/15>

This Article is brought to you for free and open access by SFA ScholarWorks. It has been accepted for inclusion in Index of Texas Archaeology: Open Access Gray Literature from the Lone Star State by an authorized editor of SFA ScholarWorks. For more information, please contact [cdsscholarworks@sfasu.edu](mailto:cdsscholarworks@sfasu.edu).

---

## Revisiting a Historic Manuscript: Vere Huddleston's Report on East Place (3CL21) Excavations

Creative Commons License



This work is licensed under a [Creative Commons Attribution 4.0 License](https://creativecommons.org/licenses/by/4.0/).

# REVISITING A HISTORIC MANUSCRIPT: VERE HUDDLESTON'S REPORT ON EAST PLACE (3CL21) EXCAVATIONS

*Mary Beth Trubitt and Linda Evans*

## Abstract

Vere L. Huddleston was one of several amateur archaeologists who excavated Caddo sites in Clark County, Arkansas, during the 1930s and 1940s. Huddleston took better notes about the sites and contexts of his finds than many of his contemporaries. His large collection of artifacts is now part of the Joint Educational Consortium's Hodges Collection in Arkadelphia. A manuscript on his excavations at the East Place – the largest Caddo mound group in Clark County – is presented here with new vessel documentation and grave lot information. Since many of these artifacts have appeared in previous publications with little description, this work provides context for interpreting the site and its placement in the Caddo Indian history of this region.

## Editors' Introduction

Ancestral Caddo Indians lived and farmed along the Ouachita, Caddo, and Little Missouri rivers in Clark County, Arkansas, between at least 1100 and 1700 A.D. (Early 2002a, b, c, d; Early, ed., 1993). Large populations in the Mid-Ouachita region during this time are evidenced by the large numbers of recorded mounds, sites, and cemeteries (Early 1982; Girard et al. 2014; Trubitt 2012a, b). The archaeological residues of these past communities have attracted interest and research for over two centuries. In 1804, William Dunbar and George Hunter, charged by President Thomas Jefferson to lead an expedition up the Ouachita River, stopped at a saline near present-day Arkadelphia. Digging two holes there, the men found "several pieces of Indian earthen pots, probably used by them in making salt," (Berry et al. 2006:87; archaeological sites such as Bayou Sel, 3CL27, and Hardman, 3CL418, were later recorded in this vicinity, Early, ed., 1993).

Archaeological sites and the Caddo pottery in this area drew the attention of museums and collectors across the country, and digging was viewed as a source of income to some residents even before the Depression. A note by Vere Huddleston relates that "according to L. E. Tenneson of Arkadelphia, he and another student of Henderson Brown (College) excavated enough pottery from these sites in the 1890s and sold it to a museum in Chicago, to pay their way through college," (Hodges Collection, SG 41-04). Some farmers would find artifacts while plowing their fields, and often the pots would be destroyed. Many pots were dug from burial mounds and sold to collectors (Evans 2011:3).

During the Depression, a group of amateur archaeologists from Arkadelphia, Arkansas, made attempts to preserve these artifacts, keep them in this area, and make a record of the sites where they were found. Vere Huddleston, Robert Proctor, Charlie Richardson, as well as Dr. Thomas L. and Charlotte Hodges of Bismarck, were important figures in the history of Caddo archaeology in Arkansas (Girard et al. 2014). Some of our knowledge of this pottery, these archaeological sites, and the Caddo Indians who once lived in Clark County comes as a result of this Depression-era work by amateurs who not only preserved the pottery, but also took notes on their excavations. At this time, the concept of stewardship was in its early development, but in some cases these amateurs were early adherents to many of the ethical principles that American archaeologists follow today (Early 1986; Evans 2012). Robert Proctor, Charlie Richardson, and others donated

many of the artifacts they collected to the Henderson State University (HSU) Museum, under the directorship of Dr. P. G. Horton in the 1950s. Dr. Cynthia Weber and Dr. Ann Early managed the museum between the 1970s and 1990s as part of their duties as Arkansas Archeological Survey's HSU Research Station archaeologists, and researched and documented Caddo vessels in the collections (e.g., Early 2012; Weber 1972). Since the HSU Museum closed, its American Indian artifact collection has been on loan to the Historical Arkansas Museum in Little Rock (Historic Arkansas Museum 2014).

Vere Huddleston was one of the amateur archaeologists active in Clark County during the 1930s-1940s (Figure 1). "Mr. Huddleston was the only member of his group to keep substantive records of his discoveries, and Huddleston's notes, along with his artifacts, are another invaluable and irreplaceable corpus of primary data about regional archeology," (Early 1986:4). After Huddleston's death in 1946, his collection of pottery and extensive site notes and papers were sold to Dr. and Mrs. Hodges. The Hodges collection was acquired by the Joint Educational Consortium (JEC) in 1977, and has been curated by the Arkansas Archeological Survey's HSU Research Station ever since (Early 1978, 1986; Trubitt 2007). Among Huddleston's notes, now in the HSU Archives, was an unpublished article on his excavations at the East Place, a multiple mound site now recorded as 3CL21. The lack of published data about this important site led us to revisit this manuscript in an attempt to glean new information about the archaeology of this region.

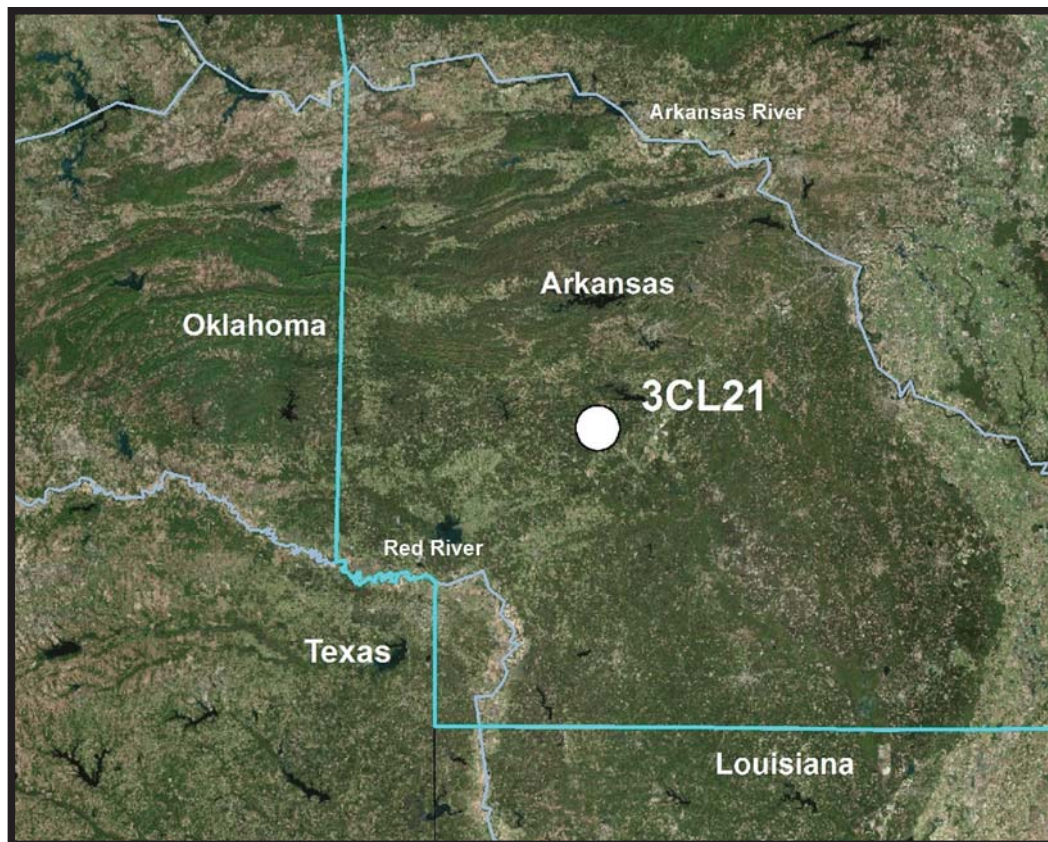


**Figure 1.** The Three Amateur Archeologists of Arkadelphia, 1940 (inscription on reverse also identifies, left to right, Charles Richardson, artist, Vere L. Huddleston, principal, Arkadelphia High School, and Prof. Robert Proctor, HSTC; Henderson State University Archives, Hodges Collection, SG 41/04 F7).

Vere Huddleston was born on the 23<sup>rd</sup> of December, 1898, to Minnie C. and Flemon Huddleston, farmers who lived in Hale, in Garland County, Arkansas (Evans 2012:14). He married Mary in 1922, and by the 1930 census, he was a teacher in a public school in Arkadelphia, Arkansas. At the time of his death in 1946, he was the principal of Arkadelphia High School (Evans 2012:14). He was "an authority on Arkansas Indians, particularly the Caddo tribe ... and his collection of Indian relics included several thousand individual items, including 1,000 pieces of pottery which had been catalogued. Mr. Huddleston was one of the pioneer archaeologists of the Caddo Indians," (Richter 1992:564). Huddleston (1943) published one article, "Indians in Clark County," in the *Arkansas Historical Quarterly*.

Huddleston's artifact collection and notebooks became part of the Hodges collection after his death, and Dr. and Mrs. Hodges included the Huddleston material (then tabulated at 400 vessels) in their published descriptions of pottery from the Middle Ouachita River region (Hodges and Hodges 1945; the Hodges catalogue from 1946 notes the purchase of Huddleston's collection of "approx. 350 pieces of pottery," so the 1000 pieces mentioned above seems to be inaccurate). The Hodges Collection, now owned by the Joint Educational Consortium, is important because most of the artifacts came from a cluster of sites in Clark and Hot Spring counties in west-central Arkansas. It is also historically significant for Caddo archaeology because Philip Phillips of Harvard University and Alex Krieger of University of Texas visited Thomas and Charlotte Hodges, Vere Huddleston, and Robert Proctor, and photographed pottery vessels in their collections. Some of these were used to illustrate types in the *Handbook of Texas Archeology* (Suhm and Jelks 1962; see also Early 1986; Newell and Krieger 1949:vii). Phillips' photographs of many of the Hodges Collection vessels in 1939, along with his note cards (on file at the Arkansas Archeological Survey's HSU Research Station), were instrumental in Early's (1978) identification of artifact provenience in the JEC Hodges Collection after 1977.

Based on notes now in the HSU Archives, Vere Huddleston dug graves at East Place (3CL21, see Figure 2) between April, 1939, and January, 1943. While a sketch map exists, his location descriptions are vague. Most of the graves were dug in and adjacent to a mound on the site's west side. Grave lot associations are clearer, and by matching dates, descriptions, and catalogue numbers, it has been possible to reconstruct grave lots for 18 graves dug by Huddleston (Table 1). In some cases, artifacts from a grave were divided between the excavators (typically Huddleston, Proctor, and Richardson), and therefore vessels from the same grave may be separated between the JEC Hodges and the HSU Museum collections.



**Figure 2.** Approximate location of East Place (3CL21) in southwest Arkansas (map created by Katie Leslie, Arkansas Archeological Survey, 2014).

**Table 1. Reconstructed Grave Lots from Huddleston's East Site Excavations.**

Grave Number	Huddleston/Hodges		Huddleston Description	3CL0021:		AASurvey Documentation:
	Cat. #	Cat. #		Prov/Item	Vessel Form	
<i>First set:</i>						
Grave 1 and/or 2	197	1374		1	48	bowl, carinated
4/29/1939	198	1375		1	49	bowl, carinated
[late Social Hill to Deceiper phase]	199	1376	engraved red ware carinated bowl (sketched)	1	36	bowl, carinated, tall rim
	200	1368	whole piece (sketch - bottle)	1	12	bottle
Grave 3, 20" deep on original soil	201	1380	1 of 3 broken pieces (sketch - jar) [201 = 1380?]	1	41	jar, tall rim
4/29/1939 - 5/5/1939	202	1373	1 of 3 broken pieces, cazuela / hanging bowl with scalloped rim	1	34	bowl
[late Social Hill to Deceiper phase]	203		1 of 3 broken pieces, cazuela			
	204	1379	cazuela	1	32	bowl, carinated
	205		jar			
	206		jar			
	207	1371	bottle, perfect (sketch)	1	13	bottle, pedestalled
	208	1372	human effigy bottle, perfect (sketch)	1	50	bottle, effigy, pedestalled
Grave 4, 6' east of other graves	222		badly broken, part of deep bowl			
5/27/1939	223		badly broken, jar			
[late Mid-Ouachita to Social Hill phase]	224	1412	badly broken, large jar 1412 [224=1412?]	1	42	jar, tall rim
	225		small vase			
	226	1388	deep bowl, small, notched rim [226 = 1388?]	1	35	bowl, simple
	227	1384	deep bowl, large, notched rim [227 = 1384?]	1	39	bowl, simple
	228		plain water bottle, neck broken			
	229	1387	badly broken cazuela (sketch, 228 almost ident.) [229 = 1387?]	1	38	bowl, carinated
	230		badly broken cazuela			
Grave 4A, 5/27/1939	231		Ritchie ruined one with shovel, Huddleston recovered it			
<i>South of other graves:</i>						
Grave 5, no trace of bone, 24" deep, 2 graves?	232		pipe, broken (sketch)			
6/7/1939	233		bottle (sketch) [Crockett Curvilinear-Incised]			
	234		pot (sketch) [cogged rim bowl?]			
			pot, to Whaley			
			bottle, Glendora ware, to Ritchie			
<i>West side of the mound/next to the slough:</i>						
Grave 6, 12" deep	235		bottle, crushed (sketch) [Keno Trailed]			
6/10/1939	236		cazuela, cone-shaped, partial (sketch)			
	237		vessel, partial			
	238 to 240		3 bone awls			
	241		bottle, Glendora ware, crushed (sketch)			
	242		vessel, whole			
	243		skull			
			broken bowl, to Whaley			
<i>Base of Mound C:</i>						
Grave 7, shallow	1					
8/5/1939	2					
[late Social Hill to Deceiper phase]	244 - 4	2098	cone shaped cazuela (sketched)	1	33	bowl, carinated
	245 - 3	2097	water bottle, Glendora ware	1	16	bottle, pedestalled
	245		small bowl covered with 6 rim projections (sketched)			

Type/Variety	Surface/Decoration	Descriptive	Temper	Comments
Means Engraved	engraved	Erie 1 :: Enos 9?	shell (lchd) & grog	partial vessel, reconstr. from sherd lot
Means Engraved	engraved	Enos 4? 5? :: plain	grog & shell (lchd)	
Means Engraved ?	engraved	Elgin 12 :: Enos new	grog & shell (lchd)	partially reconstructed with plaster
Keno Trailed var. Red Hill	incised/trailed	plain :: Belhaven 31	shell (leached)	probe hole at shoulder
Cowhide/Foster T-I	incised/punctated	Chatham 9 :: Baker 16? 21?	shell (leached)	nodes on body
Maddox Engraved	engraved/notched lip/slip?	Cornell :: Elmira? Erasmus?	none visible	2 opposing rim tabs with suspension holes
Means Engraved	engraved	Enos 15? 16? :: plain	grog & shell (lchd)	2 small nodes at base of rim; partial vessel
Keno Trailed	incised/trailed	plain :: Belhaven 32	grog & grit	3 nodes on pedestal, fireclouding
Keno Trailed	incised/trailed/modeled	plain :: Baker 27 ?	shell (leached)	2 human faces on opposite sides
	brushed/punctated	Dana 14 :: Danbury 2?	shell (leached)	sooting, fireclouding; reconstr. from sherd lot
	notched lip	Cornell :: plain	grog	similar to Hardman Engraved in shape, lip notching
	notched lip	Cornell 7 :: plain	grog & shell (lchd)	partial v.; sim. to Hardman Engraved
Glassell Engraved ?	engraved/punctated	Enos 10? 11? 12? :: plain	shell (lchd) & grog	
Means Engraved	engraved	Enos 14 :: plain	shell (lchd) & grog	some fireclouding, 2 nodes at rim/body juncture
Keno Trailed var. Red Hill	incised/trailed	plain :: Belhaven 33	shell (some lchd)	reconstructed, plastered

**Table 1. Reconstructed Grave Lots from Huddleston's East Site Excavations (cont.).**

<i>On top of the mound:</i>						
Grave X, no bone, 4 crushed pots	2490	incised red slip bowl (sketched)	1	9	bowl, simple	
5/9/1941	2491		1	1	bowl, simple	
[East phase]	2492	incised red slip bowl (sketched) [sketch does not match 2492]	1	5	beaker	
	2493	incised/punctated jar (sketched)	1	28	jar, short rim	
<i>On ramp or saddle between mounds:</i>						
Grave X or Y, tooth crowns, 3 pots, 40" deep	1	2511	crushed pot			
12/6/1941	2	2512	crushed pot	1	23	bottle
[Mid-Ouachita phase]	3	2513	crushed pot	1	47	bottle
<i>In small burial mound just N of the 4 large mounds:</i>						
found by Dr. Ritchie, May 1942	2641	wood duck head, carved wood, semi-charcoal state, pigment	1	11	effigy adorno, carved wood	
<i>No provenience noted:</i>						
September, 1942 [East phase]		Labeled "East Sept. 42" on base	1	10	jar, short rim	
<i>No location indicated:</i>						
Grave XX, 18" deep, trace bone, 4 pots, red ochre	2642	perfect / incised red ware (sketched)	1	22	jar, tall rim	
9/19/1942	2643	struck with shovel and needs repairing / incised jar (sketched)	1	21	jar, short rim	
[East to Mid-Ouachita phase]		Mr. Charlie took bottle, plain, with small tall neck				
		Mr. Proctor took small slip bowl similar to Hudd 1305				
<i>In mound:</i>						
Grave A, 6' deep, 1 crushed bottle, skull in ash		crushed bottle				
11/14/1942	2693	skull (from Grave A?)				
Grave A' (next to A, depth 6'6") 15 pots, no bone	2688	plain bottle of red slipware (sketched)	1	30	bottle	
11/14/1942	2689	incised jar (sketched)	1	4	jar, tall rim	
[East phase]	2690	engraved red ware (sketched)	1	19	beaker	
	2691		1	46	jar, tall rim	
	2692	bottle, engraved red ware (sketch)	1	31	bottle	
		Proctor took large beautiful bowl about a gallon capacity				
		(another 9 vessels originally in grave, no info)				
		long stemmed platform pipe				
		celt				
<i>No location indicated:</i>						
Grave B, 18" deep, 8 pieces of pottery (3 effigies)	2694	effigy pot / incised red slip effigy bowl (sketched)	1	14	effigy bowl	
11/21/1942	2695	engraved beaker (sketched)	1	3	beaker	
[East phase]	2696	bottle, engraved (sketched)	1	2	bottle	
	2697	celt	1	45	celt	
	2698 to 2707	10 small points (10 to Hudd, 10 to Mr C, 9 to Mr Proctor)				
		pot, Mr C				
		effigy pot, Mr C				
		effigy pot, Mr P				
		pot, Mr P				
		pipe, Mr Proctor				



East Incised	red slipped/incised	Barrington 10 :: plain	grit	rim tabs, abrasion on base
East Incised	red slipped/incised	Barrington 9 :: plain	grog & grit	2 incised rim tabs
	plain	:: plain	grog & grit	badly broken, missing rim
	incised/punctated	Caldwell 3 ? :: Claffin	grog	reconstructed; related to Sinner Linear-Punctated?
<hr/>				
Adair Engraved	engraved/appliqued	Eagle 3 :: Eric 1	grog	
	engraved	plain :: Elmira 60? Elmhurst 9?	grog	sherd lot, not reconstructed
<hr/>				
Karnack Brushed-Incised?	incised	plain :: Antioch 3	grog & grit	fireclouds
<hr/>				
Pease Brushed-Incised ?	incised/applique	Butler 1 :: Alma 3?	grog	7 nodes around body, sooting
sim. to Military Road Inc.	brushed/incised/punctated	Dana 4 :: Altus 4	grog	broken rim; related to Sinner Linear-Punctated?
<hr/>				
Smithport Plain	red slipped	plain :: plain	grog & claygrit	fireclouds
Pease Brushed-Incised?	incised/punctated	Caldwell 15 :: Antioch 14	grog & grit	or Dunkin Incised?
East Incised	red slipped/incised	Barrington 7 :: plain	grog & claygrit	suspension holes
	punctated/brushed	Andes? :: Danbury 1	grog	reconstr. from sherd lot
Hickory Fine Engraved	engraved	plain :: Erie 13	grog & bone	fire clouds
<hr/>				
East Incised	red slipped/incised/effigy	Bates 15 or Barrington 5::plain	grog	animal head & tab on rim, reconstr. with plaster
East Incised?	incised	Bates 16 :: plain	grog & grit	2 suspension holes
Spiro Engraved?	red slipped/engraved	plain :: Evangel 1	grog & grit	3 circular panels of curvilinear engraving/excising

**Table 1. Reconstructed Grave Lots from Huddleston's East Site Excavations (cont.).**

<i>Mound, south of center of mound:</i>					
Grave C, 5' deep, 4 pots	2708	bottle	1	25	bottle
12/12/1942	2709	pipe stem, bowl deteriorated	1	15	long stem pipe
[East phase]	2710	perforated jar/beaker type jar, incised red ware (sketched)	1	18	beaker
	2711 to 2724	small point (14 of 19 to Hudd)			
		bottle to Proctor			
		perforated jar/beaker jar to Proctor			
		celt, Proctor			
<hr/>					
<i>Mound, west of center of mound:</i>					
Grave D, 5' deep, no trace of bone	2725	bottle, crushed, Coles Creek ware, plain-red slip (cat card/sketch)	1	7	bottle
12/13/1942	2726	vase, crushed/ incised redware (sketched)	1	17	beaker
[East phase]	2727	copper covered artifact			
		pot, Proctor (urn-shaped pot in good condition?)			
<hr/>					
<i>Mound: grave on top of the mound:</i>					
Grave E, in hard clay, only trace of bone	2729	pot, crushed / incised jar (sketched)	1	20	jar, tall rim
12/18/1942	2730	large crystal	1	27	quartz crystal
[East phase]	2731	arrow			
	2732	copper covered object			
		good pot to Proctor			
		pipe to Proctor			
		large crystal to Proctor			
<hr/>					
<i>No location indicated:</i>					
Grave F, 6' deep	2742	bottle, in good shape (sketched)	1	24	bottle
1/1/1943	2743	pot, crushed			
[East phase]	2744	pot, crushed / incised jar (sketched)	1	29	jar, tall rim
	2745	pot, crushed / engraved jar (sketched)	1	8	jar, tall rim
	2746	pot, crushed	1	44	bowl
	2747	pot, crushed	1	43	beaker
	2748	crystal	1	26	quartz crystal
	2749 to 2755	small point (7 to Hudd, 7 to Proctor)			
		bottle, in good shape, to Proctor			
		pot, crushed, to Proctor			
		celt to Proctor			
		crystal to Proctor			
<hr/>					
<i>Mound, on top of mound:</i>					
Grave G, 4' deep	2756	vase incised with punctates from rim to base (sketched)	1	37	jar, short rim
1/16/1943	2757	vase with inward sloping sides, rim perforations (sketched)	1	6	beaker
[East to Mid-Ouachita phase]	2758 to 2765	8 small points, Hudd			
		water bottle, to Proctor, beautiful red ware bottle			
<hr/>					
<i>No provenience noted:</i>					
? date [East phase?]		No number, no info	1	40	jar, short rim

sim. to Hickory Fine Engr.	incised (dry paste)	Bates 9 :: plain	grog	pedestal base
East Incised	incised	Bates 3 :: plain	grog	2 suspension holes
Smithport Plain ?	red slipped ?	plain :: plain	grog & grit	heavily mended bottle
East Incised	incised	Barrington 1 :: plain	grog	suspension holes (2)
Pease Brushed-Incised	incised/punctated	Andes 10? :: Alma 3	grog	reconstructed
Smithport Plain	plain	plain :: plain	grog & claygrit	fireclouds, black residue on body
Pease Brushed-Incised	incised	Beloit 1 :: Alpha 2	grog	residue on base/ext.
Pease or Karnack B-I	incised/punctated	Case 8 :: Claffin 8	grog	heavily mended, 2 opposable rim tabs
East Incised	incised	Bates 3 or Barrington 1 :: plain	grog	reconstr. from sherd lot
East Incised	incised/red slipped	Bates 17? :: plain	grog	partial vessel, suspension hole
Military Road Incised	incised/punctated	Beloit 2 :: Clinton 12, Bard 2?	grog & claygrit	fireclouds, slightly castelated rim; pigment assoc.?
East Incised ?	engraved	Eckerd 2 :: plain	grog & grit	2 suspension holes
sim. to Smithport Plain ?	red color from ochre?	plain :: plain	grog & grit (mica)	human bone fragments in jar, no info

Phillips photographed eight of Huddleston's vessels from East Place. Krieger examined and photographed East Place vessels from both the Proctor and the Huddleston collections, the latter owned by the Hodgeses by that point, and illustrated several plates of East vessels in the George C. Davis monograph (Newell and Krieger 1949:vii, Fig.63-65). The description of East in the Davis monograph was brief since "[d]etails on the mound and graves are lacking" (Newell and Krieger 1949:210). Clarence Webb included East pottery in his description of the type Dunkin Incised and the Bossier focus, crediting Dr. and Mrs. T. L. Hodges and Alex Kreiger (Webb 1948:106). Again, the description of the site is brief. "Pottery from the East Mound, a Haley focus site on Antoine River in southern Arkansas, includes a number of vessels which have shapes similar to Pease vessels and decoration consisting of incised fields, often herringbone, separated by incisions, nodes or lines of punctates," (Webb 1948:113). Huddleston and his contemporaries referred to Caddo pottery and earlier pre-Caddo wares similar to Marksville or Coles Creek complexes; Webb and the Hodgeses used the Midwest Taxonomic System and referred to Haley and Mid-Ouachita foci (Girard et al. 2014).

By the late 20<sup>th</sup> century, archaeologists were defining phases that had geographic as well as temporal boundaries, reinforced by radiocarbon dates. In an unpublished paper on East Place ceramics based on vessels in the HSU Museum from the Horton, Proctor, Richardson, and Whaley collections, Cynthia Weber (1972) emphasized that there were multiple components at the site, not just the Early to Middle Caddo period material illustrated in earlier publications. Despite the lack of published information, East became the type site for the East phase, initially described by Weber (1972) and later defined by Early (ed., 1993; Early 2002a). A sequence of phases -- East, Mid-Ouachita, Social Hill, and Deceiper -- have been defined for the Middle Ouachita River region between A.D. 1100-1700 (Early 2002a, b, c, d; Early, ed., 1993).

In addition to the East Place vessels in the HSU Museum collections (Early 2002a; Weber 1972), there is a set of vessels excavated from East by Odis and Nell Sullivan in the 1950s to 1970s, recently donated to the Arkansas Archeological Survey (Morrow et al. 2014). Ann Early created a topographic map of the site in 1980, and she and Daniel Wolfman collected two samples for archaeomagnetic dating. The dates, EA 89-90, from baked clay structure floors within two mounds at East, returned dates of 1270±20 and 1400±25 (Wolfman 1982). This helped establish that the East phase was a Middle Caddo period manifestation. The site was used into the Late Caddo period as well. A future project will bring together available information from these different sources on East, and provide a clearer discussion of the history of site use.

Here, we present Vere Huddleston's manuscript describing his East Place excavations. The typed manuscript and several pages of an earlier handwritten version are in the HSU Archives (Hodges Collection, 41/04D 43-50, 41/04E 1-2). The manuscript, written about 1945, is accompanied with several pages of artifact sketches (Figures 3, 4, 5) that include Huddleston's vessels as well as those of Richardson, Proctor, Ritchie, Whaley, and Horton. For this article, we have edited lightly (corrected spelling, changed endnotes to in-text citations, and added several headings), deleted locational information to protect archaeological sites from further disturbance, and made several editors' notations. Our detailed discussion and documentation of Huddleston's East vessels follows the manuscript.

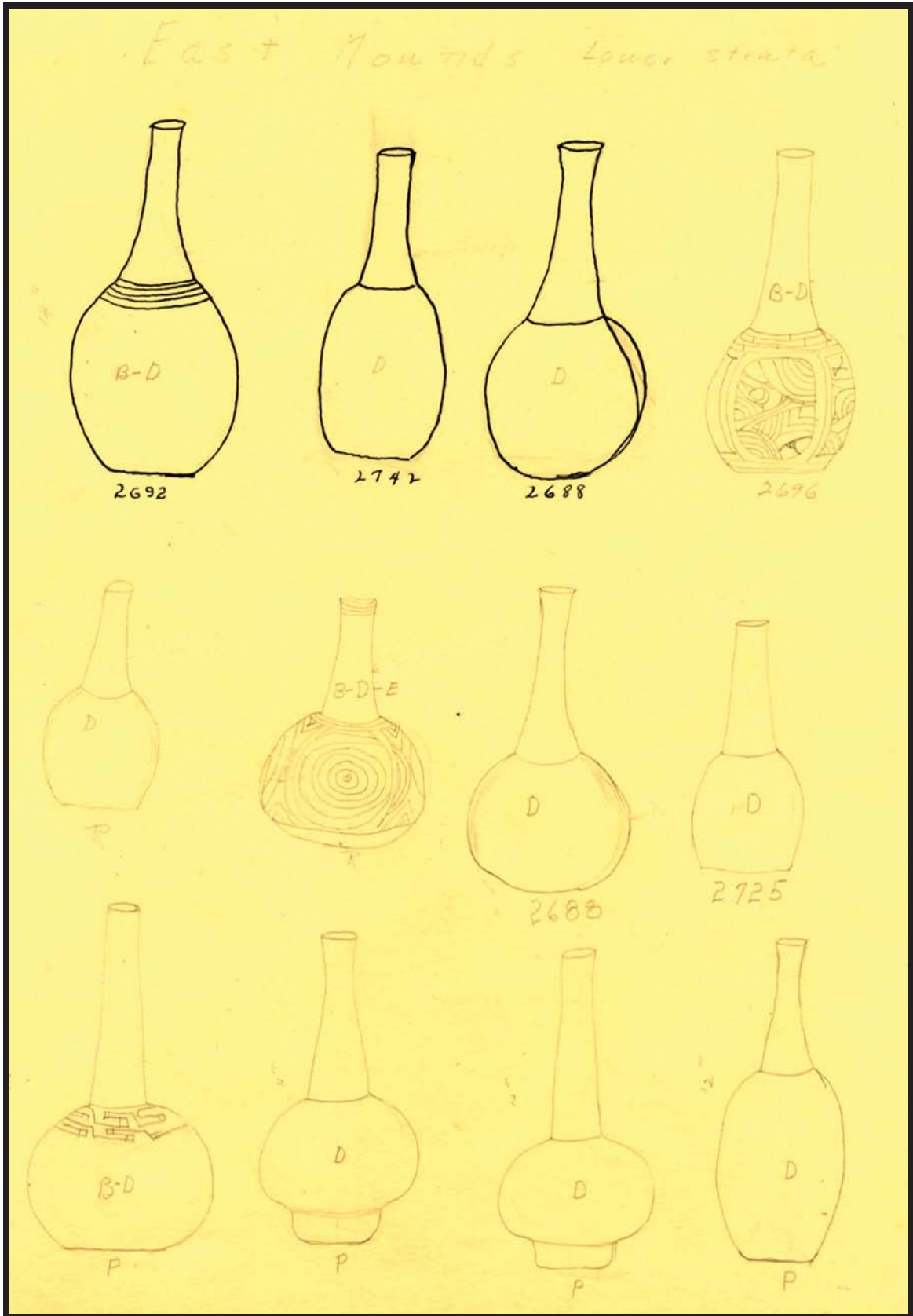


Figure 3. Huddlestone's sketches of bottles from East Place (HSU Archives, Hodges Collection, 41/04D-62).

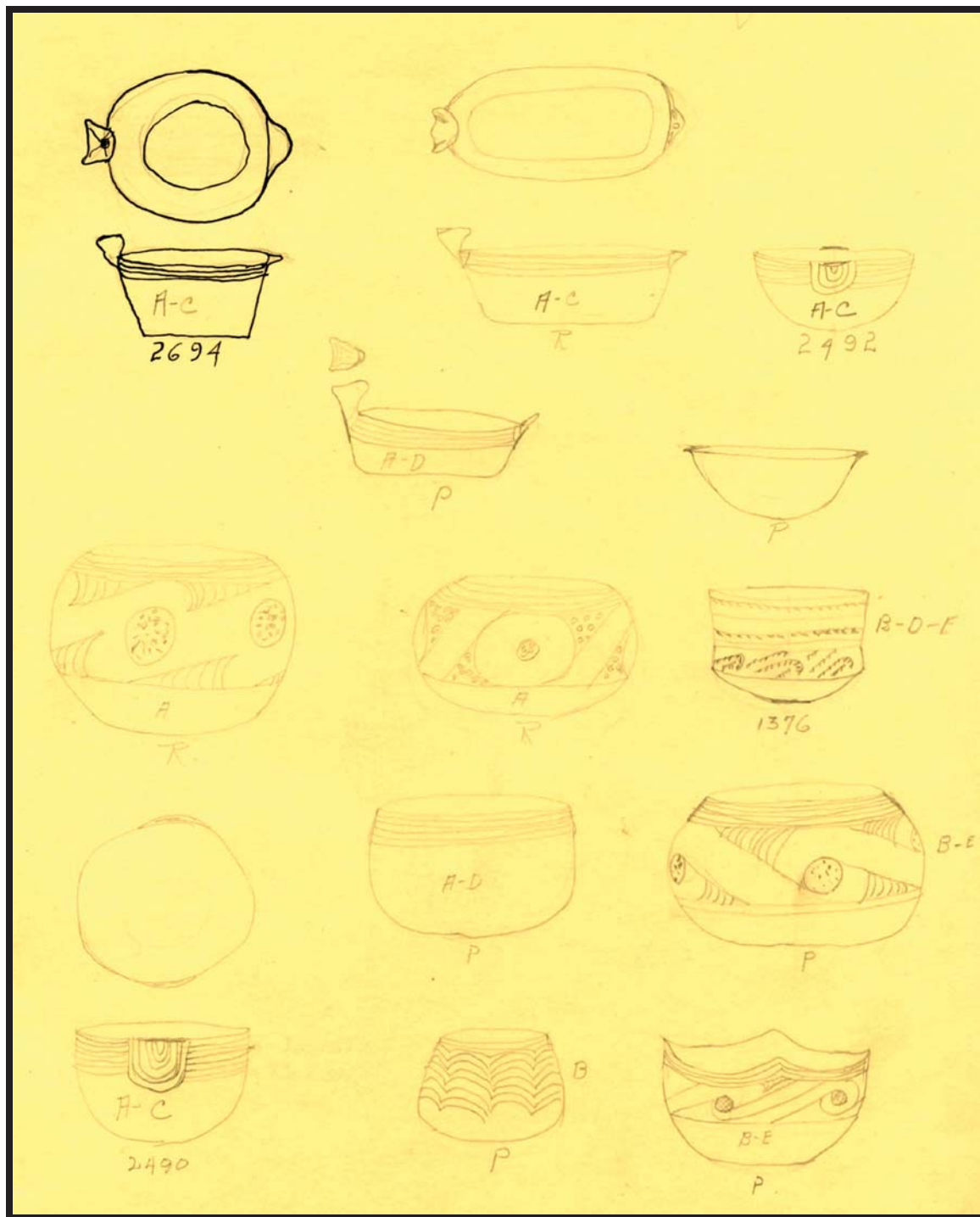


Figure 4. Huddleston's sketches of bowls from East Place (HSU Archives, Hodges Collection, 41/04D-40).

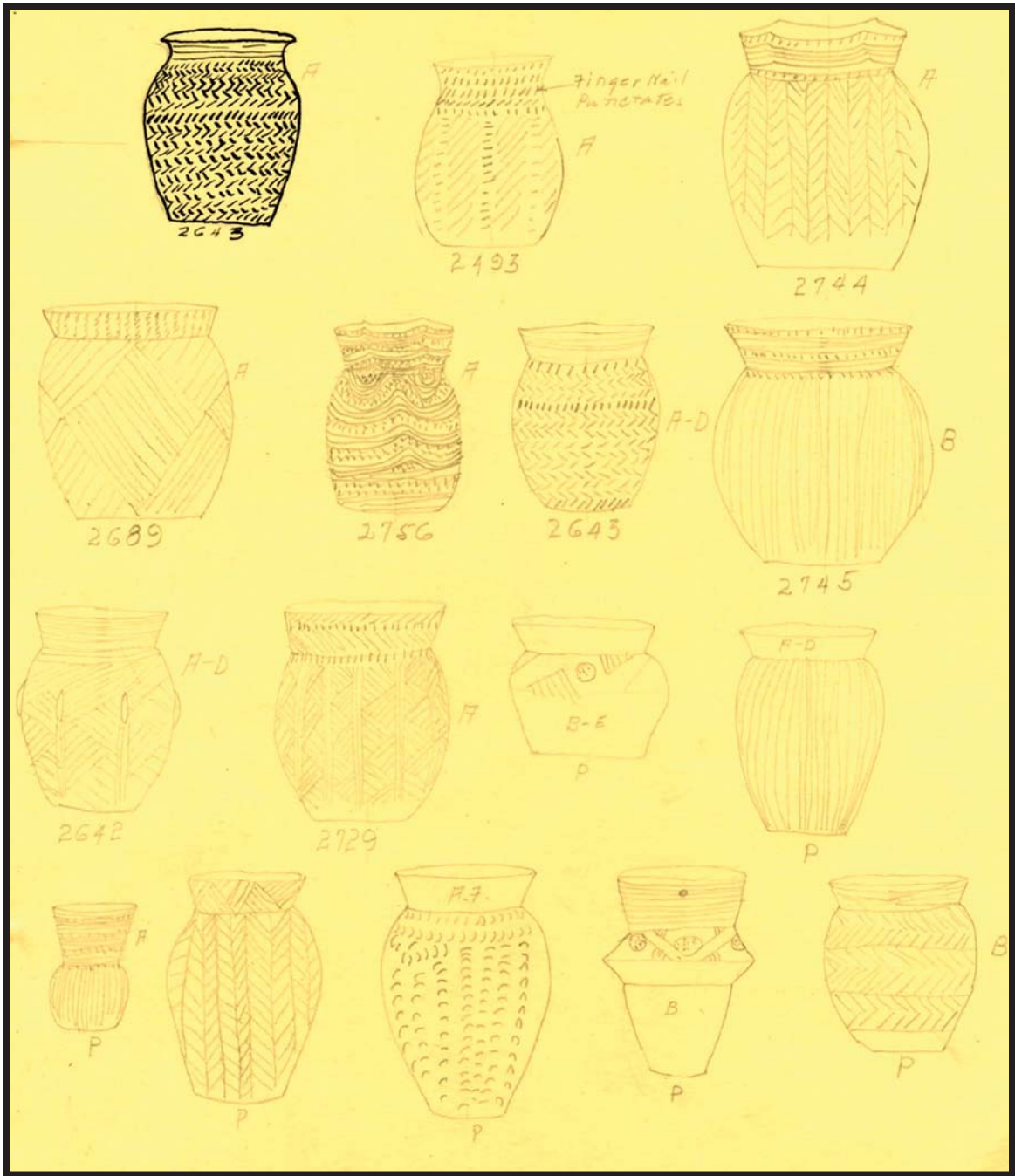


Figure 5. Huddleston's sketches of jars from East Place (HSU Archives, Hodges Collection, 41/04D-61).

### **Vere Huddleston's "Ancient Village Sites on Antoine River in Clark County, Arkansas"**

There is in the western part of Clark County on the W. B. East farm on the Antoine River, a mound site which from all indications is very early Caddo. The name Pre-Columbian Caddo has been given to the culture the pottery indicates by C. H. Webb of Shreveport, Louisiana (personal conference April 10, 1945).

The site is part of a long series of mounds and village sites extending from above the present village of Antoine, on the Antoine River, to a point about five miles down the Antoine to its confluence with the Little Missouri, and some two miles down the Little Missouri. Most of the mounds are on the east or Clark County side of the river. One large mound is on Buren Hardin's farm .... [Eds.: locations deleted in this paragraph and next; descriptions indicate archaeological sites 3NE68, 3CL60, and 3CL29]. Sherds and stone artifacts picked up on this site indicate a possible Marksville culture.

About ... miles above the East site is considerable evidence of a camp site area and a large conical mound approximately twenty feet high. About ... miles below is the Kirkham site excavated by Lemley and Dickenson in 1932 (Dickinson and Lemley 1939).

Nowhere in the Ouachita Valley has the writer seen a mound site area similar to the East site. It is located ... on an old bank of the Antoine River .... The site covers between twenty and thirty acres and consists of fifteen mounds that are still quite noticeable and possible remnants of others that the river and the plow have long since obliterated. All but four are from a few inches to three or four feet in height. These four are much larger than the others and are arranged in a semicircle and connected by lower saddles or ramps. The tallest is about fifteen feet high, and is near the center of the semicircle.

The topography of the site and its size makes it likely to conclude that this is the Quipana mentioned in the travels of De Soto as narrated by the Gentleman of Elvas (Swanton 1939:230, 255). [Eds.: While the Swanton Commission placed Quipana on the Antoine or Little Missouri River, modern reconstructions of the De Soto route places both Tula and Quipana further north in the Ouachita Mountains (Early 1993). The Spanish may have passed through the Little Missouri region on their way west after visiting Chaguata in the Middle Ouachita River region, however (Girard et al. 2014; Schambach 1993).]

The first excavation known to the author was made in 1933 by Lemley and Dickinson (personal conference with S. D. Dickinson, 1943). This was merely a superficial visit and only one excavation was made in one of the connecting ramps. Nothing was found.

On April 29, 1939, the author in company with Dr. Otis Whaley and Dr. William Ritchie, both of the faculty of Henderson State Teachers College, visited the site and found on the south slope of a mound a burial area which yielded several graves ranging in depth from a few inches to thirty inches. There were in all about twenty graves in this group, some so close to the surface that the plow had wrecked the tops of the pottery. All the pottery, the stone and bone artifacts, and the two pipes recovered were of the typical Caddo ware so common to the Ouachita Valley area. Skeletal material was either completely deteriorated or so soft as to be beyond recovery with one exception; this was a very shallow grave at some



distance down the west slope of the mound and isolated from the other graves. The skull and some of the other bones were well preserved. With this burial were three Glendora bottles arranged around the head, two cone-shaped bowls near the right hand, and a broken food jar between the outstretched legs. Near the right elbow were three beautifully worked and polished bone awls. All the pots were crushed. [Eds.: Huddleston notes 7 graves (Table 1: Graves 1-7) that he dug in 1939; this description refers to his Grave 6, but neither the human remains nor the objects from this grave have been identified in the JEC Hodges Collection.]

All these graves were in black kitchen midden and had been buried in all directions with the majority facing east. There was a larger percentage of Glendora bottles than in any other typical Caddo site known to the author. Of some possible significance is the fact that no seed jars were found. Of the two pipes found one was of elbow pattern and the other a modified platform type, similar to the long stemmed pipes found later. The stem was four inches long and the projection of the stem beyond the bowl was pointed. Both types are common in typical Caddo burials. In all some eighty-five pieces of pottery were taken out but about three-fourths were badly crushed or wrecked by the plow. [Eds.: About 37 vessels were mentioned in Huddleston's notes from the 1939 excavations (Table 1), 15 of which have been identified in the JEC Hodges Collection. His figure of 85 pieces of pottery presumably also includes pots from graves dug by Whaley and Ritchie.]

About a year after excavation of the above described area we by accident discovered on top of the same mound, a grave thirty inches deep that yielded a type of pottery which we recognized immediately as something distinctly different from the typical Caddo pottery. [Eds.: This is Huddleston's Grave X, excavated 5/9/1941.]

The area in which the burials were found yielding this type of pottery covered roughly a spot about thirty feet square. The burials ranged in depth from two and one-half to seven feet. All were the same in that it was necessary to excavate through hard packed clay to reach them, and most of them were on a level of between six and seven feet deep.

There was only an occasional sherd or piece of charred wood to indicate the soil had ever been disturbed. All the burials were intrusions in a previously undisturbed clay seems to have been used [Eds.: Huddleston may have meant 'that seems to have been unused.'].

Occasionally a layer of ashes mixed with clay would be encountered. In all the deep graves there was a layer of silt deposit two inches thick and approximately thirty inches above the grave floor level. As it was uniform in thickness and about the same depth in all the burials it seems to indicate a break period in the construction and use of the mound as a burial site. In all, four burials were found above this silt deposit which contained the same type pottery. A total of twenty-four graves were excavated. In addition to the three people mentioned in the first of this paper as assisting in the excavation the following people also took part: Mr. R.T. Proctor, Mr. Charlie Richardson, Dr. P.G. Horton and Dr. Erwin. The twenty-four graves yielded on hundred and twenty pieces of pottery, six celts or fist hatchets, five crystals, five quivers of arrows containing a total of over one hundred points, one pair slate ear spools, one wood effigy wood duck head, five long stem pipes and one platform pipe, one piece of galena and several traces of copper artifacts. [Eds.: Huddleston's notes describe

about 11 graves dug by him between May 1941 and January 1943, with about 54 pottery vessels (Table 1); 30 of these vessels, along with 1 celt, 1 pipe, 2 quartz crystals, and the wooden duck head adorno (Figure 6) have been identified in the JEC Hodges Collection.] There was no skeletal material found in any of the graves except one which showed evidence of cremation, only the skull remained. In most of the graves not a trace of bone remained. Possible skeletal positions could be determined only by the position of artifacts.



**Figure 6.** Duck head effigy adorns, JEC Hodges Collection: left, carved wooden artifact from East Place, 77-1/1-11; right, ceramic effigy, no provenience, 77-1/X (Arkansas Archeological Survey digital photograph AASHSUD\_N8995).

Two burials contained portions of charred remains of what appeared to have been cane mats that had been placed over the body and burial furnishings. There are six other sites known in the Ouachita Valley where similar artifacts and burial conditions have been found – the Crenshaw site (Dickinson 1936), Haley Place (Moore 1912:527-564), Ozan (Harrington 1920), Gahagan mound site (Webb and Dodd 1939), and two other sites in Clark County from which similar pottery has been taken by the author. [*Eds.*: Crenshaw (3MI6), Haley (3MI1), and Gahagan (16RR1) are in the Red River valley in Arkansas and Louisiana while the sites near Ozan, including Ozan 1, 3HE37, and Washington, 3HE35, are between the Little River and Little Missouri River drainages in Arkansas. The Clark County sites he refers to may have been 3CL40 and 3CL84, based on several East Incised, Sinner Linear Punctated, and Smithport Plain vessels that have been documented in the JEC Hodges Collection.]

*Pottery.* The pottery is characterized by the following: a predominance of red ware or red slip ware; absence of seed jars; beaker type vessels with pierced rims; tall necked bottles which gradually enlarge from the top to the base; bottles with bases; no shell tempered ware; a good percentage of flat bottom pieces; few effigies (only three in all); and most of the decoration of rather simple lines or punctates. The decoration consisted of

both incised and engraved lines, punctates, raised or pinched designs, fingernail punctates, scalloped rims, and what appears to be an attempt to imitate stamped ware in at least two pieces. There were several semi-globular bowls similar to those described by Harrington (1920) from the Ozan site.

Two of these bowls were unique in that both engraving and incised lines were used in executing the motif. In both, the potter had incised the characteristic four to six lines around the rim on a slightly thickened incurving portion of the vessel, this portion being just as wide as the space used for the lines. After this incising the vessel had been given a red slip coat and engraved with circles and semi-interlocking scrolls, the motif covering almost the entire outside of the vessel. [*Eds.*: Based on the accompanying sketches, at least one of these is a Crockett Curvilinear Incised bowl collected by Ritchie.]

Of the three effigies found all were most alike and in the same grave. They were all small bowls, the largest being five inches in diameter, the other two were boat shaped. Each consisted of the head of what may have been meant for a fox attached to the rim and looking into the bowl. On the opposite side of the rim is a small projection resembling a tail. The decorative motif in each was the same, four to six incised lines on a slightly thickened portion of the rim. All had also been treated with a red slip coat. [*Eds.*: These vessels were described in Huddleston's notes as coming from his Grave B, with one going to Mr. Charlie [Richardson], one to Mr. Proctor, and one retained by Huddleston (and now in the JEC Hodges Collection, 77-1/1-14). One of the boat-shaped effigy bowls is illustrated in Suhm and Jelks (1962:Plate 21E) and in Newell and Krieger (1949:Fig. 63H), but is not in the HSU Museum Collection.]

The bottles are characterized by having necks that are as tall or taller than the body of the bottle. All the necks are smaller at the top than at the base, but in a few cases there is a flare at the top. The tallest bottle was fourteen inches. All were red slipped and most of them were plain. In the decorated bottles, the motif consisted of either engraved or incised lines around the top of the body of the bottle. The body of one is entirely decorated with incised parallel lines which extend from the base of the neck to the bottom of the bottle. The lines are about one-fourth inch apart and are heavy. Another bottle has four broken engraved lines circling the top of the body and the remainder of the body divided into four sections each surrounded with two concentric circles. Within the circles there are interlocking angular lines and semicircles with no apparent motif.

There were a number of beaker shaped jars or bowls having all most perpendicular sides with flat bottoms. About three-fourths of them were decorated and always in the same manner; four to six lines around the top on a slightly thickened portion of the rims. All of these beakers were treated with a red slip and have pierced rims for suspending. Harrington (1920:Plate LXIX-LXXX) shows similar forms from the Washington site. Lines are overhanging as in the Coles Creek Culture (Ford 1936:172-218). Five similar pieces were semi-globular in shape but in ware, decoration, and piercing of the rims, were the same.

The vase forms ranged in size from three inches tall to ten inches. All were incised using as motifs alternate meandering lines and punctates, herringbone motifs, or parallel lines. The body of one is completely covered with small punctates arranged in rows parallel

to the base. [Eds.: Sentence missing? Discussion shifts from jars to East Incised bowls.] They ranged in diameter from four to eight inches and all but one were decorated with a rich red slip and parallel lines around the rim on a thickened wall. These bowls have two rim projections opposite each other which consists of a flattened top wide enough to permit the incising of a circle with a triangle on each side and a shrinking of the outside of the rim just under this flat top. In incising seven of the slip pieces the slip was applied often by pipe. [Eds.: Meaning unclear.]

*Pipes.* All the pipes found were similar with one exception. Harrington (1920:Plate CIV) found one similar to this from the Hot Springs site. [Eds.: Harrington visited several sites in the Upper Ouachita River drainage near Hot Springs, Arkansas.] Five of the long stem type were found; the shortest was five inches and the longest twenty three inches. These pipes are very delicate and the bowl is very small. They were probably for ceremonial purposes only. All had been treated with a red slip and showed evidence of use. Harrington (1920) and Lemley [Eds.: either refers to Dickinson and Lemley 1939 or Lemley 1936] and Moore (1912) found similar types. All the pipes had apparently been stood against the wall of the grave near the head. One had either fallen into or had been placed in a bowl.

*Arrowpoints.* In all, seven graves yielded caches of arrows ranging in number from nine to thirty eight. In every case they were pointing in the same direction. All points were very expertly and delicately chipped of red, brown, gray, and white flint and novaculite and ranged in length from one-half to two and one-half inches. Similar types have been found at Gahagan (Webb and Dodd 1939), Haley Place (Moore 1912), Crenshaw site [Eds.: either refers to Dickinson 1936 or Lemley 1936], and Mineral Springs (Harrington 1920). In one small beaker with pierced rim there were ten small arrows. [Eds.: While Huddleston's notes indicate caches of arrowpoints were found in Graves B, C, F, and G, none have specifically been identified in the JEC Hodges Collection. Similar caches of arrowpoints or quivers of arrows have been described from deep graves at several of these other sites (as well as at Cahokia's Mound 72, later in the 20<sup>th</sup> century [Fowler et al. 1999]).]

*Copper.* Traces of copper were found in four graves. In no case was there enough left to indicate its usage other than a part of clothing. Under one piece there were two short pieces of twisted cord possibly part of a robe. There were two semi-spherical objects which appeared to be halves of nuts that had been covered with copper. [Eds.: Huddleston's notes indicate two copper-covered objects in Graves D and E, not identified in JEC Hodges Collection.]

*Polished Stone.* Six graves yielded beautifully polished celts which apparently had been placed near the hand of the body but bone was so completely gone as to make this only a guess. In four graves there were large crystals placed in about the same position; these ranged in length from five to nine inches and were from three-fourths to one and one-fourth inches in diameter. There was one pair of round slate ear spools three and one-half inches in diameter. Both showed evidence of having been copper covered.

*Skeletal Material.* Evidences of skeletons were observed in only one grave. This appeared to be a cremation. Only the skull remained so that it could be preserved. A

considerable amount of ash and charcoal was packed on the grave floor and around the bones and artifacts. The skull was badly crushed. [*Eds.*: Huddleston's notes indicate a crushed vessel and skull in ash were found in Grave A; the skull was given a catalog number, but has not been linked with human remains in the JEC Collection. The human remains tentatively identified from East in the collection were found in vessel 1-40 with no further information (Table 1).]

*Other Materials.* A piece of galena was found in one grave. It was about the size of a walnut and unworked except for a hole pierced through the thin side. One wood ornament was found. [*Eds.*: This wood artifact (77-1/1-11, Figure 6) was apparently found by Dr. Richie in 1942.] It had been burned and was about the consistency of charcoal which would account for its preservation. It is probably walnut and was carved to represent a wood duck head. Lines across the top and on the sides had been filled with yellow red and white ocher. There was a projection from the underneath side suggesting a neck which was probably the means of fastening it to a hollow cane or stick.

*Summary.* Contrasts with the usual Caddo burials of the surrounding area:

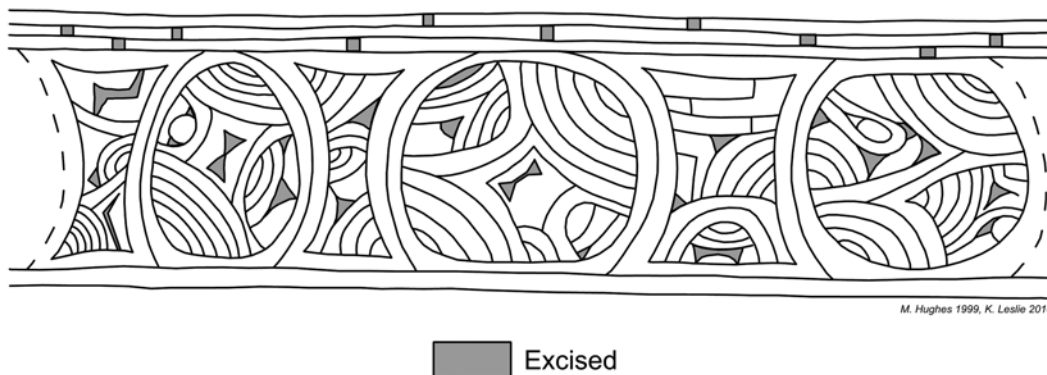
- a. Most of the pottery is either red slip or red ware.
- b. All tempering is either sand or grit, no shell.
- c. Tall necked bottles with tapering sides from top to base.
- d. Large crystals in burials.
- e. Arrows are excellently chipped and shaped considerably different from those found on Caddo sites or graves.
- f. Pipe stems are long and delicately made with the portion of the stem extending beyond the bowl cut square off. In Caddo burials where similar pipes have been found the stems are larger and extend to a point beyond the bowl.
- g. Copper covered ear spools and other copper covered objects.
- h. Beaker shaped vessels with pierced rims.
- i. Cahoka type arrow points. [*Eds.*: Huddleston footnotes "Cahoaka" but does not provide a reference on the Cahokia site.]
- j. Parallel lines around rim of vessels similar to Coles Creek (Ford 1936).
- k. Mound arrangement not typically Caddo.
- l. No seed jars or cazuellas.

### **Editors' Discussion: Documentation of Huddleston's East Vessels**

A total of 45 of Huddleston's vessels from East Place (3CL21) have been identified in the JEC Hodges Collection (the Hodges Collection was accessioned as 77-1, each site was coded with a number, such as 1 for 3CL21, and each artifact identified to 3CL21 was assigned a unique number, -1, -2, -3; see Appendix). These have been documented using a protocol first developed by Ann Early for use on the HSU Museum vessel collections and recently revised by Early and Leslie Walker (2014) as part of the Arkansas Archeological Survey's digital vessel database initiative. The record form includes attributes of form and shape, paste and temper, measurements, decorative treatment, evidence of use, and associations. The East Place vessels were documented between 1999 and 2014 at the Arkansas Archeological Survey's HSU Research Station, first under Ann Early's and then under Mary Beth Trubitt's supervision. While there have been some changes in the recording protocol during this time (for example, "grit" often referred to "claygrit" or grog rather than crushed rock temper in earlier years), the results are comparable. Decorative treatments to vessel rim and

body use the collegiate or descriptive system, developed for use on Caddo vessels in southern Arkansas (e.g., Early, ed., 1993; Schambach and Miller 1984), that uses named patterns and numbered design variations within each pattern. Some of the East vessels represent “type examples” for specific design variations (Figure 7). Type and variety names follow Early (ed., 1993) and Suhm and Jelks (1962). While black and white photographs were taken in 1977-1978, documentation of vessels in the JEC Hodges Collection at the Arkansas Archeological Survey’s HSU Research Station since 1999 has also included color slides and digital photographs. Site collections that include Huddleston vessels and records have been prioritized, with an effort made to identify associated funerary objects that can be linked with human remains in the JEC Hodges Collection (Trubitt 2012b).

JEC Hodges Collection      Vessel  $\frac{77-1}{1-2}$



**Figure 7.** Illustration of new Evangel 1 pattern and design from engraved bottle 77-1/1-2, Huddleston’s Grave B (roll-out drawing by Milton Hughes and Katie Leslie, Arkansas Archeological Survey, 1999 and 2014).

The JEC’s Hodges Collection contains about 55,000 objects, most of which are stone tools and broken pottery pieces. The collection also includes about 1300 whole, partial, or reconstructed vessels (Early 1978). JEC Hodges Collection artifacts were first exhibited at the HSU Museum in 1981; displays on the campuses of Henderson State University and Ouachita Baptist University began in 1996, and there are currently four venues with exhibits from this collection in Arkadelphia. Following the passage of the Native American Graves Protection and Repatriation Act or NAGPRA in 1990, inventories and notifications were done for HSU Museum and Arkansas Archeological Survey collections. The Joint Educational Consortium, made up of Henderson State University and Ouachita Baptist University (and the Ross Foundation at one time), initially maintained that their collection was outside the scope of NAGPRA, but did send a summary to the Caddo Nation in 1995. More recently, JEC officials have consulted with and met with representatives of the Caddo Nation about the collection.

Based on his notes, Vere Huddleston dug graves at East Place (3CL21) between April, 1939, and January, 1943. In 1939, Huddleston dug 7 graves that included pottery styles that he had previously seen on other sites in the Middle Ouachita River region (Table 1, Graves 1-7). Fifteen vessels from these graves have been identified in the JEC Hodges Collection. Shell and grog-and-shell temper predominates in vessels in the four grave lots represented. Vessel shapes (carinated bowls described as cone-shaped by Huddleston, bottles with short spool necks and everted lips, sometimes pedestalled), and types (Means Engraved, Keno Trailed *variety Red Hill*) indicate late Social Hill or Deceiper phase assignment (Early 2002c, d; Early, ed., 1993) for Huddleston’s Grave 1/2, 3, and 7 (Figure 8). There are similarities with Middle Ouachita River sites such as Hardman (Early, ed., 1993). One grave lot (Huddleston’s Grave 4, with a brushed/punctated jar, a carinated

Glassell Engraved bowl, and two notched rim bowls similar to Hardman Engraved but plain) probably dates to the late Mid-Ouachita or Social Hill phase (Early, ed., 1993). Bottles (n=4) and carinated bowls (n=6, of 15) are the most common vessel form in this set, but there are vessels from these graves that are missing (possibly in HSU Museum Collections).

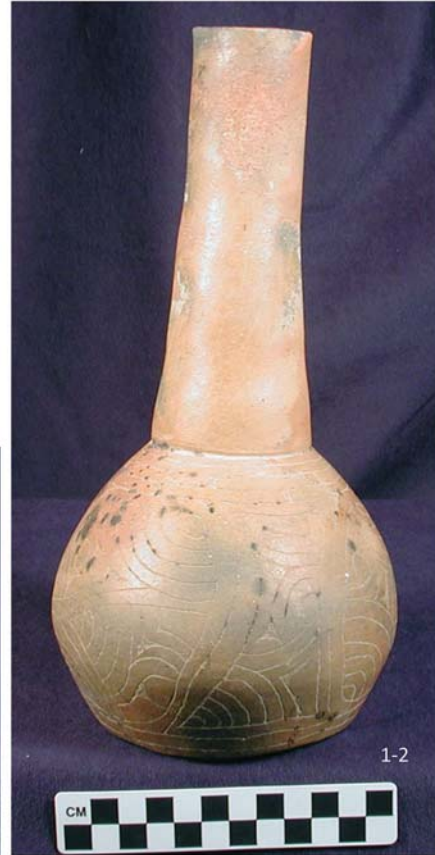


**Figure 8.** JEC Hodges Collection vessels linked to Huddleston’s Grave 3, excavated from East Place in 1939 (Arkansas Archeological Survey digital photographs).

Between May of 1941 and January of 1943, Huddleston dug 11 graves at East, several of which were in a mound or mounds, sometimes deep (4-6’ below surface) but occasionally shallow (18”). Huddleston recognized that the artifacts represented a different and earlier time period in the site’s occupational history. Thirty vessels from this group have been identified in the JEC Hodges Collection, as well as 1 celt, 1 pipe, and 2 quartz crystals. The vessels are predominantly tempered with grog and include tall plain or red-slipped Smithport Plain, Hickory Fine Engraved, and Spiro Engraved bottles, East Incised bowls and beakers, and jars with rectilinear incising and punctating typed as Pease Brushed-Incised (Figure 9, 10). Most of these grave lots indicate an East phase component at the site (Early 2002a; Early, ed., 1993), or early Mid-Ouachita phase (grog-tempered Military Road Incised, Adair Engraved). Jars (n=11), bottles (n=8), and beakers (n=7, of 30) are the most common vessel form of this set, but again, all the vessels from these graves are not present in the JEC Hodges Collection.



3CL21 –  
Huddleston Grave B  
(11/21/1942)  
(East phase)

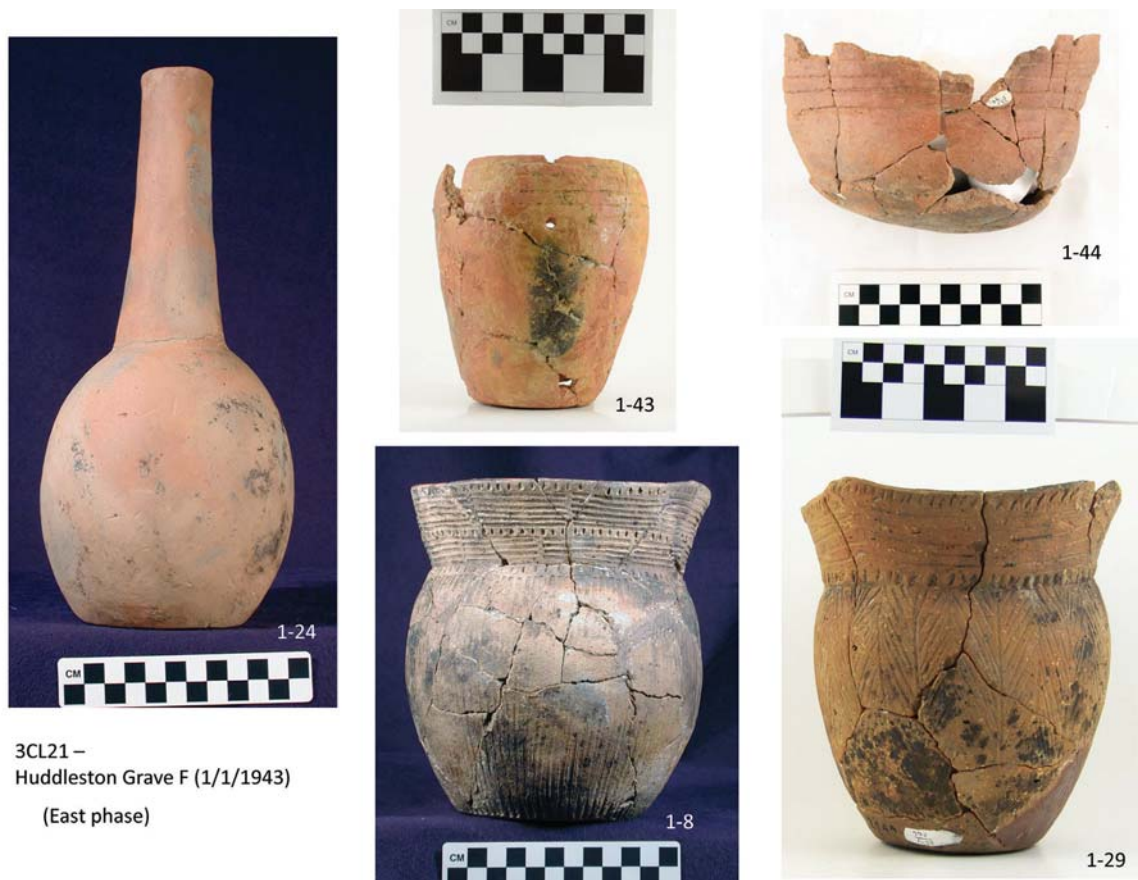


**Figure 9.** JEC Hodges Collection vessels linked to Huddleston's Grave B, excavated from East Place in 1942 (Arkansas Archeological Survey digital photographs).

One small jar (77-1/1-40) had no provenience or context information other than site. It is tempered with grog and grit (abundant mica), and plain, with red color from firing or possible red ochre rather than an applied slip. The shape is unusual for this region, and its assignment to 3CL21 may be in error. Human bone fragments were found in the jar that may have come from the same grave, but there is no identification or notes, so the context is unclear. The vessel and the human remains are interpreted as associated at this time. No other human remains in the JEC Hodges Collection have been identified or linked to East Place (3CL21).

There are similarities between the East phase burial vessels from East and vessels at Crenshaw (3MI6) in the Red River valley, as noted by Huddleston in his manuscript. Early Caddo vessels documented from Crenshaw by Perttula and colleagues (2014) also included East Incised, Hickory Engraved, Smithport Plain, and Spiro Engraved types, but that assemblage also included numerous Crockett Curvilinear Incised and Haley Complicated Incised vessels, not documented in this collection from East (although Huddleston's sketches show several examples in Proctor's collection from the site). Pease Brushed-Incised vessels were assigned to Middle Caddo contexts at Crenshaw (Perttula et al. 2014). Hickory Engraved bottles and Pease Brushed-Incised jars are also well represented in the assemblage excavated by Harrington from the Ozan sites and Washington, although Hempstead Engraved, Crockett Curvilinear Incised, Sinner Linear Punctated, and Haley Complicated Incised are found there and not in this East collection (Gonzalez et al. 2005; Harrington 1920). Hays Mound (3CL6), in the Little Missouri River valley, was salvaged as it was being leveled in 1971 (Weber 1973). With dates ranging between A.D. 1000-1400 and a sherd assemblage that includes many types and surface treatments seen at East, Hays is an important comparison but needs an updated artifact





3CL21 –  
Huddleston Grave F (1/1/1943)  
(East phase)

**Figure 10.** JEC Hodges Collection vessels linked to Huddleston’s Grave F, excavated from East Place in 1943 (Arkansas Archeological Survey digital photographs).

analysis (Early 2002a; Trubitt 2009; Weber 1973). Excavations at 3CL401 (Ross), a mound site in the Little Missouri River valley, produced sherds of similar pottery (Early 1984). From the Middle Ouachita River valley, comparisons can be made with lower levels excavated at 3CL27 (Bayou Sel) and the lower structure and pre mound midden at 3CL593 (Caddo Valley Mound) (Trubitt 2009).

Huddleston’s work at East Place (3CL21) has played an important role in the history of Caddo archaeology. Many of the vessels he and the other Arkadelphia amateur archaeologists dug from graves at the site in the 1930s-1940s were used to illustrate and later define the initial Caddo presence in the Middle Ouachita River region in Arkansas, now defined as the East phase, ca. 1100-1400 A.D. Based on the vessels and reconstructed Huddleston grave lots, it is clear that the use of the site extended to the Deceiper phase, ca. 1650-1700 A.D. The manuscript that Huddleston wrote, reproduced here, provides some context for the artifacts.

### Acknowledgements

Original Huddleston and Hodges notes are curated at HSU Archives, and the JEC Hodges Collection artifacts are curated at Henderson State University in Arkadelphia, Arkansas. The East Place vessels were documented between 1999 and 2014 at the Arkansas Archeological Survey’s HSU Research Station by Florence Davis, Mary Ann Goodman, Ann Early, Jeffrey Gaskin, Vanessa Hanvey, Jim Hudgins, Milton Hughes, Judy Thye, Mary Beth Trubitt, and Kate Wright. JEC Hodges Collection documentation has been funded in part by a 2006 grant from the Ross Foundation. We appreciate comments on an earlier version of this manuscript by Ann M. Early, as well as suggestions by the two reviewers prior to publication.

## References Cited

- Berry, Trey, Pam Beasley, and Jeanne Clements  
2006 *The Forgotten Expedition, 1804-1805: The Louisiana Purchase Journals of Dunbar and Hunter*. Louisiana State University Press, Baton Rouge.
- Dickinson, S. D.  
1936 The Ceramic Relationships of the Pre-Caddo Pottery from the Crenshaw Site. *Bulletin of Texas Archeological and Paleontological Society* 8:56-69.
- Dickinson, S. D. and Harry J. Lemley  
1939 Evidences of the Marksville and Coles Creek Complexes at the Kirkham Place, Clark County, Arkansas. *Bulletin of the Texas Archeological and Paleontological Society* 11:139-189.
- Early, Ann M.  
1978 A Guidebook to the T. L. Hodges Collection of Prehistoric and Historic Artifacts, Fossils and Minerals. Joint Educational Consortium, Arkadelphia, Arkansas. Ms. on file, Arkansas Archeological Survey, HSU Research Station, Arkadelphia.  
1982 Caddoan Settlement Systems in the Ouachita River Basin. In *Arkansas Archeology in Review*, edited by Neal L. Trubowitz and Marvin D. Jeter, pp. 198-232. Research Series No. 15, Arkansas Archeological Survey, Fayetteville.  
1984 Survey and Testing of the Ross Site (3CL401). Limited distribution report, on file at Arkansas Archeological Survey, HSU Research Station, Arkadelphia.  
1986 Dr. Thomas L. Hodges and His Contribution to Arkansas Archeology. *The Arkansas Archeologist* 23-24:1-9.  
1993 Finding the Middle Passage: The Spanish Journey from the Swamplands to Caddo Country. In *The Expedition of Hernando de Soto West of the Mississippi, 1541-1543*, edited by Gloria A. Young and Michael P. Hoffman, pp. 68-77. University of Arkansas Press, Fayetteville.  
2002a Arkansas Prehistory and History in Review: The East Phase. *Field Notes: Newsletter of the Arkansas Archeological Society* 304:4-8.  
2002b The Mid-Ouachita Phase. *Field Notes: Newsletter of the Arkansas Archeological Society* 305:10-13.  
2002c Arkansas Prehistory and History in Review: The Social Hill Phase. *Field Notes: Newsletter of the Arkansas Archeological Society* 306:10-13.  
2002d Arkansas Prehistory and History in Review: Deceiper Phase. *Field Notes: Newsletter of the Arkansas Archeological Society* 307:8-11.  
2012 Form and Structure of Prehistoric Caddo Pottery Design. In *The Archaeology of the Caddo*, edited by Timothy K. Perttula and Chester P. Walker, pp. 26-46. University of Nebraska Press, Lincoln.
- Early, Ann M., editor  
1993 *Caddoan Saltmakers in the Ouachita Valley: The Hardman Site*. Research Series No. 43, Arkansas Archeological Survey, Fayetteville.
- Evans, Linda  
2011 Interview with Hoy Furr. Henderson State University Archives, Arkadelphia, Arkansas.  
2012 Amateur Archeologists in the Ouachita River Valley during the Great Depression. Master of Liberal Arts thesis, Henderson State University, Arkadelphia, Arkansas.
- Ford, James A.  
1936 *Analysis of Indian Village Site Collections from Louisiana and Mississippi*. Anthropological Study Number 2, Department of Conservation, Louisiana Geological Survey, New Orleans, Louisiana.
- Fowler, Melvin L., Jerome Rose, Barbara Vander Leest, and Steven R. Ahler  
1999 *The Mound 72 Area: Dedicated and Sacred Space in Early Cahokia*. Illinois State Museum Reports of Investigations No. 54, Illinois State Museum Society, Springfield.

### References Cited (cont.)

- Girard, Jeffrey S., Timothy K. Perttula, and Mary Beth Trubitt  
2014 *Caddo Connections: Cultural Interactions within and beyond the Caddo World*. Rowman & Littlefield, Lanham, Maryland.
- Gonzalez, Bobby, Robert Cast, Timothy K. Perttula, and Bo Nelson  
2005 *A Rediscovering of Caddo Heritage: The W. T. Scott Collection at the American Museum of Natural History and Other Caddo Collections from Arkansas and Louisiana*. Historic Preservation Program, Caddo Nation of Oklahoma, Binger.
- Harrington, M. R.  
1920 *Certain Caddo Sites in Arkansas*. Museum of the American Indian. Heye Foundation, New York.
- Historic Arkansas Museum  
2014 Museum Collection: Pottery of Caddo. Electronic document, <http://www.historicarkansas.org/collections/pottery-caddo.aspx>, accessed December, 2014.
- Hodges Collection  
Thomas and Charlotte Hodges Collection – V. L. Huddleston papers, Local and HSU History Collections, RG41, SG04. Henderson State University Archives, Arkadelphia, Arkansas.
- Hodges, T. L. and Mrs. [Charlotte]  
1945 Suggestion for Identification of Certain Mid-Ouachita Pottery as Cahinnio Caddo. *Bulletin of the Texas Archeological and Paleontological Society* 16:98-116.
- Huddleston, V. L.  
1943 Indians in Clark County. *Arkansas Historical Quarterly* 2(2):110-115.
- Lemley, H. J.  
1936 Discoveries Indicating a Pre-Caddo Culture on Red River in Arkansas. *Bulletin of the Texas Archeological and Paleontological Society* 8:25-55.
- Moore, Clarence B.  
1912 Some Aboriginal Sites on Red River. *Journal of the Academy of Natural Sciences of Philadelphia* 14(4):483-638.
- Morrow, Juliet E., Sarah Stuckey, and Claire Nix  
2014 The Archeological Collections of Odis and Nell Sullivan: A Recent Donation to the Arkansas Archeological Survey. Paper presented at the 2014 Annual Meeting of the Arkansas Archeological Society, October, 2014, Springdale, Arkansas.
- Newell, H. Perry and Alex D. Krieger  
1949 The George C. Davis Site, Cherokee County, Texas. Memoir No. 5, Society for American Archaeology (published as *American Antiquity* vol. 14, no. 4, part 2).
- Perttula, Timothy K., Bo Nelson, Mark Walters, and Robert Cast  
2014 *Documentation of Caddo Funerary Objects from the Crenshaw Site (3MI6) in the Gilcrease Museum Collections*. Special Publication No. 19, Friends of Northeast Texas Archaeology, Pittsburg and Austin, Texas.
- Richter, Wendy  
1992 V. L. Huddleston. In *Clark County Arkansas: Past and Present*, edited by Wendy Richter, pp. 563-564. Clark County Historical Association, Arkadelphia, Arkansas.

### References Cited (cont.)

Schambach, Frank F.

- 1993 The End of the Trail: Reconstruction of the Route of Hernando De Soto's Army through Southwest Arkansas and East Texas. In *The Expedition of Hernando de Soto West of the Mississippi, 1541-1543*, edited by Gloria A. Young and Michael P. Hoffman, pp. 78-105. University of Arkansas Press, Fayetteville.

Schambach, Frank F. and John E. Miller

- 1984 A Description and Analysis of the Ceramics. In *Cedar Grove: An Interdisciplinary Investigation of a Late Caddo Farmstead in the Red River Valley*, edited by Neal L. Trubowitz, pp. 109-170. Research Series No. 23. Arkansas Archeological Survey, Fayetteville.

Suhm, Dee Ann and Edward B. Jelks, editors

- 1962 *Handbook of Texas Archeology: Type Descriptions*. Special Publication No. 1, Texas Archeological Society, and Bulletin No. 4, Texas Memorial Museum, Austin.

Swanton, John R., chairman

- 1939 *Final Report of the United States De Soto Expedition Commission*. United States Government Printing Office Washington, D. C.

Trubitt, Mary Beth

- 2007 Documentation of the Joint Educational Consortium's Hodges Collection. Paper presented at the 49th Caddo Conference, March 15-18, 2007, Magnolia, Arkansas.
- 2009 Burning and Burying Buildings: Exploring Variation in Caddo Architecture in Southwest Arkansas. *Southeastern Archaeology* 28(2):233-247.
- 2012a Topographic Mapping of a Caddo Mound in Clark County. *Field Notes: Newsletter of the Arkansas Archeological Society* 364:9-11.
- 2012b New Information from Old Collections: Analyzing Caddo Mortuary Ceramics from the Middle Ouachita River Valley. Paper presented in symposium (co-organized by D. P. McKinnon and E. L. Dowd) at the 69<sup>th</sup> Annual Meeting of the Southeastern Archaeological Conference, November, 2012, Baton Rouge, Louisiana.

Walker, Leslie

- 2014 Liminal River: Art, Agency and Cultural Transformation Along the Protohistoric Arkansas River. Ph.D. dissertation, Department of Anthropology, University of Arkansas, Fayetteville.

Webb, Clarence H.

- 1948 Caddoan Prehistory: The Bossier Focus. *Bulletin of the Texas Archeological and Paleontological Society* 19:100-147.

Webb, C. H. and Monroe Dodd Jr.

- 1939 Further Excavations on the Gahagan Mound: Connections with a Florida Culture. *Bulletin of the Texas Archeological and Paleontological Society* 11:92-126.

Weber, J. Cynthia

- 1972 Ceramics of the East Mounds (3CL21). Unpublished ms., on file at the Arkansas Archeological Survey, Arkadelphia and Fayetteville.
- 1973 The Hays Mound, 3CL6, Clark County, South Central Arkansas. Report on research conducted under cooperative agreement between the National Park Service Southeast Region and the Arkansas Archeological Survey. Unpublished ms., on file at the Arkansas Archeological Survey, Arkadelphia and Fayetteville.

Wolfman, Daniel

- 1982 Archeomagnetic Dating in Arkansas and the Border Areas of Adjacent States. In *Arkansas Archeology in Review*, edited by Neal L. Trubowitz and Marvin D. Jeter, pp. 277-300. Research Series No. 15, Arkansas Archeological Survey, Fayetteville.

**Revisiting a Historic Manuscript:  
Vere Huddleston's Report on East Place (3CL21) Excavations**

Edited by  
Mary Beth Trubitt (Arkansas Archeological Survey) and  
Linda Evans (Henderson State University)

APPENDIX:  
EAST PLACE VESSEL DOCUMENTATION

JEC Hodges Collection, 77-1  
 East Place, 3CL21



Item No./Hodges Catalog	1-1, 2491
Vessel Form	bowl, simple
AAS/HSU Digital Photo No.	1773
Type	East Incised
Decoration	red slipped/incised
Rim :: Body	Barrington 9 (type) :: plain
Paste	SOFT, SLIGHTLY CRUMBLY
Temper	GROG & GRIT
Color, Core	GRAY
Color, Exterior	RED
Color, Interior	STRONG BROWN
Overall Height cm	
Weight g	
Volume liters	
Use/Wear/Condition	FIRECLOUD ON BASE; SOME SURFACE SCRATCHING ON INSIDE BOWL BOTTOM (RECENT?)
Shape / Description	ROUND, SHORT; DIRECT RIM FROM ROUND, CONVEX BASE TO LIP
Lip Treatment	ROUNDED, NO ANGLE
Orifice Diameter cm	14.4
Rim Height cm	7.5
Rim Thickness cm	.4
Rim Surface Treatment	SMOOTHED & SLIPPED & INCISED
Rim Decorative Treatment	RED SLIP, 6 HORIZONTAL 2MM-WIDE INCISED LINES SPACED 4 CM APART; 4 NESTED U-SHAPED INCISED LINES UNDER RIM TAB
Rim/Neck Shape	STRAIGHT, VERTICAL/DIRECT
Body Maximum Diameter cm	
Body Height cm	
Body Thickness cm	
Body Surface Treatment	
Body Decorative Treatment	
Body Shape	CONVEX
Base Shape	CIRCULAR, CONVEX
Base Diameter cm	7.5
Base Height cm	
Base Surface Treatment	
Base Decorative Treatment	
Appendages	HANDLES, 2 TABS AT RIM, INCISED ON TOP
Notes	Huddleston Grave X, 5/9/1941 (with 1-5, 1-9, 1-28), East phase

JEC Hodges Collection, 77-1  
 East Place, 3CL21



Item No./Hodges Catalog	1-2, 2696
Vessel Form	bottle
AAS/HSU Digital Photo No.	1783
Type	Spiro Engraved?
Decoration	red slipped/engraved
Rim :: Body	plain :: Evangel 1
Paste	HARD, FINE, COMPACT
Temper	GROG & GRIT
Color, Core	REDDISH
Color, Exterior	STRONG REDDISH BROWN, TAN, LIGHT GRAY
Color, Interior	
Overall Height cm	
Weight g	
Volume liters	
Use/Wear/Condition	FIRECLOUDS, RED SLIP WORN OFF IN PLACES, BOTTOM ROUGH
Shape / Description	LONG NECK BOTTLE W/ FLAT, ROUND BASE, GLOBULAR BODY
Lip Treatment	ROUNDED, SLIGHTLY EVERTED
Orifice Diameter cm	4.2
Rim Height cm	15.5
Rim Thickness cm	.5
Rim Surface Treatment	SMOOTHED & SLIPPED
Rim Decorative Treatment	RED SLIPPED
Rim/Neck Shape	INSLOPING, LONG NECKED
Body Maximum Diameter cm	13.2
Body Height cm	10.6
Body Thickness cm	
Body Surface Treatment	SMOOTHED & SLIPPED & ENGRAVED
Body Decorative Treatment	CURVILINEAR ENGRAVING/EXCISING, 3 CIRCULAR PANELS
Body Shape	GLOBULAR
Base Shape	CIRCULAR, FLAT
Base Diameter cm	9.9
Base Height cm	
Base Surface Treatment	
Base Decorative Treatment	
Appendages	
Notes	Huddleston Grave B, 11/21/1942 (with 1-3, 1-14), East phase; previous illustration Newell & Krieger 1949: Fig. 65A

JEC Hodges Collection, 77-1  
 East Place, 3CL21



Item No./Hodges Catalog	1-3, 2695
Vessel Form	beaker
AAS/HSU Digital Photo No.	1769
Type	East Incised
Decoration	incised
Rim :: Body	Bates 16 (type) :: plain
Paste	HARD, FINE, SILTY, COMPACT
Temper	GROG & GRIT
Color, Core	LIGHT GRAY
Color, Exterior	DARK GRAYISH BROWN, VERY PALE BROWN
Color, Interior	VERY DARK GRAY
Overall Height cm	
Weight g	
Volume liters	
Use/Wear/Condition	FIRECLOUDS
Shape / Description	SMALL BEAKER - SMALL DIA. ROUND BASE, RIM SLANTS UP & OUT W/ INSLANTED LIP
Lip Treatment	ROUNDED
Orifice Diameter cm	6.9
Rim Height cm	8.4
Rim Thickness cm	.5
Rim Surface Treatment	SMOOTHED & BURNISHED & INCISED
Rim Decorative Treatment	HORIZ. INCISED LINES W/ RED PIGMENT - 4 LINES TOP (.5 CM SPACING), 5 LINES LOWER BODY (3CM SPACING)
Rim/Neck Shape	CONVEX, INSLANTED
Body Maximum Diameter cm	7.5
Body Height cm	
Body Thickness cm	
Body Surface Treatment	
Body Decorative Treatment	
Body Shape	OVOID
Base Shape	CIRCULAR, FLAT
Base Diameter cm	4.9
Base Height cm	
Base Surface Treatment	
Base Decorative Treatment	
Appendages	2 SUSPENSION HOLES
Notes	Huddleston Grave B, 11/21/1942 (with 1-3, 1-14), East phase; previous illustration Newell & Krieger 1949: Fig. 65C; Suhm & Jelks 1962: Plate 21L



JEC Hodges Collection, 77-1  
 East Place, 3CL21



Item No./Hodges Catalog	1-4, 2689
Vessel Form	jar, tall rim
AAS/HSU Digital Photo No.	1765
Type	Pease Brushed-Incised or Dunkin Incised ?
Decoration	incised/punctated
Rim :: Body	Caldwell 15 :: Antioch 14 (type)
Paste	SOFT
Temper	GROG & GRIT
Color, Core	REDDISH YELLOW
Color, Exterior	PINKISH GRAY, REDDISH YELLOW, VERY PALE BROWN
Color, Interior	DARK BROWN, PALE BROWN
Overall Height cm	
Weight g	
Volume liters	
Use/Wear/Condition	FIRECLOUDS
Shape / Description	SQUAT, GLOBULAR JAR W/ TALL FLARING RIM, ROUND BASE, SLIGHTLY OVAL FROM TOP
Lip Treatment	ROUNDED
Orifice Diameter cm	13.1
Rim Height cm	3.2
Rim Thickness cm	.5
Rim Surface Treatment	SMOOTHED & PUNCTATED
Rim Decorative Treatment	COLUMNS OF VERTICALLY ARRANGED PUNCTATES, EACH 6MM X 1.5 MM
Rim/Neck Shape	STRAIGHT, OUTSLANTED
Body Maximum Diameter cm	13.3
Body Height cm	10.7
Body Thickness cm	.5
Body Surface Treatment	SMOOTHED & INCISED
Body Decorative Treatment	DIAGONALLY ARRANGED INCISED LINES FORMING TRIANGLES & DIAMONDS
Body Shape	GLOBULAR, NARROWING TOWARDS BASE, SHARP CURVE TO RIM
Base Shape	CIRCULAR, FLAT
Base Diameter cm	9.1
Base Height cm	
Base Surface Treatment	
Base Decorative Treatment	
Appendages	
Notes	Huddleston Grave A', 11/14/1942 (with 1-19, 1-30, 1-31, 1-46?), East phase; previous illustration Newell & Krieger 1949: Fig. 65]

JEC Hodges Collection, 77-1  
 East Place, 3CL21



Item No./Hodges Catalog	1-5, 2492
Vessel Form	beaker
AAS/HSU Digital Photo No.	1764
Type	
Decoration	plain
Rim :: Body	:: plain
Paste	MEDIUM, SILTY
Temper	GROG & GRIT
Color, Core	GRAY, PINK
Color, Exterior	DARK GRAY, PALE BROWN
Color, Interior	BROWN, REDDISH BROWN
Overall Height cm	
Weight g	
Volume liters	
Use/Wear/Condition	FIRECLOUDS
Shape / Description	BADLY BROKEN, CYLINDRICAL
Lip Treatment	
Orifice Diameter cm	
Rim Height cm	
Rim Thickness cm	
Rim Surface Treatment	
Rim Decorative Treatment	
Rim/Neck Shape	
Body Maximum Diameter cm	9.9
Body Height cm	
Body Thickness cm	.6
Body Surface Treatment	SMOOTHED & BURNISHED
Body Decorative Treatment	
Body Shape	CYLINDRICAL
Base Shape	CIRCULAR, CONVEX
Base Diameter cm	8.5
Base Height cm	
Base Surface Treatment	
Base Decorative Treatment	
Appendages	
Notes	Huddleston Grave X, 5/9/1941 (with 1-1, 1-9, 1-28), East phase

JEC Hodges Collection, 77-1  
 East Place, 3CL21



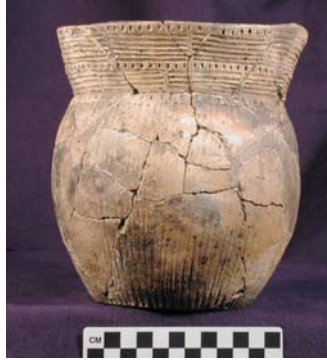
Item No./Hodges Catalog	1-6, 2757
Vessel Form	beaker
AAS/HSU Digital Photo No.	1768
Type	East Incised ?
Decoration	engraved
Rim :: Body	Eckerd 2 (type) :: plain
Paste	HARD, COMPACT
Temper	GROG & GRIT
Color, Core	GRAY
Color, Exterior	VERY DARK GRAY, VERY DARK GRAYISH BROWN
Color, Interior	DARK GRAY
Overall Height cm	
Weight g	
Volume liters	
Use/Wear/Condition	EXTERIOR SURFACE SHOWS SLIGHT UNDULATIONS FROM SMOOTHING STONE
Shape / Description	SQUAT BEAKER, RIM SLANTS IN DIRECTLY FROM BASE
Lip Treatment	ROUNDED, DIRECT
Orifice Diameter cm	7.6
Rim Height cm	7.7
Rim Thickness cm	.6
Rim Surface Treatment	BURNISHED & ENGRAVED
Rim Decorative Treatment	7 LAZY IRREG ENGRAVED LINES, HORIZ, SPACED 1.5-6.5MM
Rim/Neck Shape	CONVEX, INSLANTED
Body Maximum Diameter cm	10.1
Body Height cm	
Body Thickness cm	
Body Surface Treatment	
Body Decorative Treatment	
Body Shape	CONCAVE, ELONGATED
Base Shape	CIRCULAR & FLAT
Base Diameter cm	8.6
Base Height cm	
Base Surface Treatment	
Base Decorative Treatment	
Appendages	2 SUSPENSION HOLES
Notes	Huddleston Grave G, 1/16/1943 (with 1-37), East to Mid-Ouachita phase; previous illustration Newell & Krieger 1949: Fig. 65B; Suhm & Jelks 1962: Plate 21K

JEC Hodges Collection, 77-1  
 East Place, 3CL21



Item No./Hodges Catalog	1-7, 2725
Vessel Form	bottle
AAS/HSU Digital Photo No.	1787
Type	Smithport Plain ?
Decoration	red slipped?
Rim :: Body	plain :: plain
Paste	SOFT, SILTY, COMPACT
Temper	GROG & GRIT
Color, Core	LIGHT GRAY
Color, Exterior	LIGHT RED, LIGHT YELLOWISH BROWN, BROWN
Color, Interior	LIGHT BROWN, LIGHT YELLOWISH RED
Overall Height cm	
Weight g	
Volume liters	
Use/Wear/Condition	HEAVILY MENDED BOTTLE, FIRECLOUDS GLOBULAR, TALL-NECKED BOTTLE W/ FLAT, ROUND BASE, BODY SQUAT GLOBE, RIM SLIGHTLY FLARED
Shape / Description	
Lip Treatment	ROUNDED, DIRECT
Orifice Diameter cm	
Rim Height cm	11.2
Rim Thickness cm	.5
Rim Surface Treatment	SMOOTHED & SLIPPED
Rim Decorative Treatment	RED SLIPPED?
Rim/Neck Shape	CARAFE, LONG NECKED
Body Maximum Diameter cm	10.3
Body Height cm	9.9
Body Thickness cm	.4
Body Surface Treatment	SMOOTHED & SLIPPED
Body Decorative Treatment	RED SLIPPED?
Body Shape	OVOID
Base Shape	CIRCULAR, FLAT
Base Diameter cm	9.1
Base Height cm	
Base Surface Treatment	
Base Decorative Treatment	
Appendages	
Notes	Huddleston Grave D, 12/13/1942 (with 1-17), East phase; Huddleston cat. card, "Coles Creek ware"

JEC Hodges Collection, 77-1  
 East Place, 3CL21



Item No./Hodges Catalog	1-8, 2745
Vessel Form	jar, tall rim
AAS/HSU Digital Photo No.	1781
Type	Pease Brushed-Incised or Karnack Brushed-Incised
Decoration	incised/punctated
Rim :: Body	Case 8 (type) :: Clafin 8 (type)
Paste	SOFT, CRUMBLY
Temper	GROG
Color, Core	LIGHT GRAY
Color, Exterior	REDDISH YELLOW, GRAY, VERY PALE BROWN
Color, Interior	DARK BROWN
Overall Height cm	
Weight g	
Volume liters	
Use/Wear/Condition	BADLY BROKEN, HEAVILY MENDED
Shape / Description	GLOBULAR, TALL-RIMMED JAR
Lip Treatment	ROUNDED, SLIGHTLY EVERTED
Orifice Diameter cm	16.1
Rim Height cm	4.3
Rim Thickness cm	.7
Rim Surface Treatment	SMOOTHED & INCISED & PUNCTATED PUNCTATIONS/INCISING, FROM LIP DOWN HAS 1 ROW PUNCTATES, 6 INCISED LINES, 1ROW PUNCT, 5 INCIS LINES, DISCONTINUOUS
Rim Decorative Treatment	STRAIGHT, OUTSLANTED
Rim/Neck Shape	
Body Maximum Diameter cm	15.8
Body Height cm	13.5
Body Thickness cm	.5
Body Surface Treatment	SMOOTHED & INCISED & PUNCTATED
Body Decorative Treatment	ROW PUNCTATES AT SOULDER & VERTICAL INCISING
Body Shape	SUB-GLOBULAR
Base Shape	CIRCULAR, FLAT
Base Diameter cm	9.9
Base Height cm	
Base Surface Treatment	
Base Decorative Treatment	
Appendages	RIM TABS, 2 OPPOSABLE (RIM PEAKS?) Huddleston Grave F, 1/1/1943 (with 1-24, 1-29, 1-43, 1-44?); previous illustration Newell & Krieger 1949: Fig. 65L; Suhm & Jelks 1962: Plate 60G
Notes	

JEC Hodges Collection, 77-1  
 East Place, 3CL21



Item No./Hodges Catalog	1-9, 2490
Vessel Form	bowl, simple
AAS/HSU Digital Photo No.	1777
Type	East Incised
Decoration	red slipped/incised
Rim :: Body	Barrington 10 :: plain
Paste	SOFT, CRUMBLY
Temper	GRIT
Color, Core	VERY DARK GRAY
Color, Exterior	RED-SLIPPED
Color, Interior	RED-SLIPPED
Overall Height cm	
Weight g	
Volume liters	
Use/Wear/Condition	HIGH AMOUNT OF ABRASION ON BOTTOM OF VESSEL WHICH PERSISTS UP VESSEL FOR 3CM, RED SLIP HAS WORN AWAY IN PLACES. SOME ABRASION ON INSIDE OF VESSEL
Shape / Description	BOWL WITH INCISED (TRAILED-4.28MM WIDE) RIM TABS
Lip Treatment	FLATTENED, NO ANGLE/DIRECT
Orifice Diameter cm	15.5
Rim Height cm	8.3
Rim Thickness cm	.5
Rim Surface Treatment	SMOOTHED 7 HORIZONTAL INCISED LINES ON 1/2 OF VESSEL, 8 HORIZONTAL LINES ON OTHER 1/2; 2 5-LINE INCISED FESTOONS UNDER RIM TAB, RED SLIP
Rim Decorative Treatment	
Rim/Neck Shape	STRAIGHT, OUTSLANTED
Body Maximum Diameter cm	15.0
Body Height cm	
Body Thickness cm	
Body Surface Treatment	
Body Decorative Treatment	
Body Shape	CONICAL
Base Shape	CIRCULAR, CONVEX
Base Diameter cm	9.9
Base Height cm	
Base Surface Treatment	
Base Decorative Treatment	
Appendages	TAB HANDLES AT RIM, INCISED AREA ON TOP OF TAB Huddleston Grave X, 5/9/1941 (with 1-1, 1-5, 1-28), East phase; previous illustration Newell & Krieger 1949: Fig. 65K; Suhm & Jelks 1962: Plate 21A
Notes	

JEC Hodges Collection, 77-1  
 East Place, 3CL21



Item No./Hodges Catalog	1-10
Vessel Form	jar, short rim
AAS/HSU Digital Photo No.	1762
Type	Karnack Brushed-Incised ?
Decoration	incised
Rim :: Body	plain :: Antioch 3
Paste	HARD
Temper	GROG & GRIT
Color, Core	LIGHT RED
Color, Exterior	BLACK, VERY PALE BROWN, LIGHT RED
Color, Interior	DARK GRAY, LIGHT YELLOWISH BROWN
Overall Height cm	
Weight g	
Volume liters	
Use/Wear/Condition	FIRECLOUDS
Shape / Description	JAR W/ SHORT, FLARING RIM
Lip Treatment	ROUNDED
Orifice Diameter cm	14.0
Rim Height cm	2.6
Rim Thickness cm	.5
Rim Surface Treatment	SMOOTHED & BURNISHED
Rim Decorative Treatment	
Rim/Neck Shape	STRAIGHT, OUTSLANTED
Body Maximum Diameter cm	13.6
Body Height cm	13.7
Body Thickness cm	.5
Body Surface Treatment	SMOOTHED & BURNISHED & INCISED
Body Decorative Treatment	VERTICAL INCISING, NOT VERY REGULAR, LINES DO NOT CONTINUE TO BASE
Body Shape	HIGH-WAISTED, ELONGATED
Base Shape	CIRCULAR, FLAT
Base Diameter cm	7.9
Base Height cm	
Base Surface Treatment	
Base Decorative Treatment	
Appendages	
Notes	Huddleston, 9/1942 (labeled "East Sept. 42" on base); previous illustration Suhm & Jelks 1962: Plate 80M

JEC Hodges Collection, 77-1  
 East Place, 3CL21



Item No./Hodges Catalog	1-12, 1368 (Huddleston 200)
Vessel Form	bottle
AAS/HSU Digital Photo No.	1791
Type	Keno Trailed <i>var. Red Hill</i>
Decoration	Incised/trailed
Rim :: Body	plain :: Belhaven 31 (type)
Paste	SOFT
Temper	SHELL (LEACHED)
Color, Core	GRAY
Color, Exterior	VERY DARK GRAY
Color, Interior	DARK GRAY
Overall Height cm	
Weight g	
Volume liters	
Use/Wear/Condition	PROBE HOLE AT SHOULDER, OVAL 3X4MM SMALL, SQUAT GLOBULAR BOTTLE W/ CYLINDRICAL NECK, FLARED LIP, ROUND CONCAVE BASE
Shape / Description	
Lip Treatment	ROUNDED, FLARED
Orifice Diameter cm	4.5
Rim Height cm	6.1
Rim Thickness cm	.4
Rim Surface Treatment	SMOOTHED & BURNISHED
Rim Decorative Treatment	
Rim/Neck Shape	SPOOL
Body Maximum Diameter cm	10.5
Body Height cm	8.0
Body Thickness cm	
Body Surface Treatment	SMOOTHED & INCISED
Body Decorative Treatment	INCISING
Body Shape	SUB-GLOBULAR
Base Shape	CIRCULAR, CONCAVE
Base Diameter cm	4.7
Base Height cm	
Base Surface Treatment	
Base Decorative Treatment	
Appendages	
Notes	Huddleston Grave 1 or 2, 4/29/1939 (with 1-36, 1-48, 1-49), late Social Hill to Deceiver phase; Huddleston sketch in notebook; Phillips photo 3868



JEC Hodges Collection, 77-1  
 East Place, 3CL21



Item No./Hodges Catalog	1-13, 1371 (Huddleston 207)
Vessel Form	Bottle, pedestalled
AAS/HSU Digital Photo No.	1798
Type	Keno Trailed
Decoration	Incised/trailed
Rim :: Body	plain :: Belhaven 32 (type)
Paste	HARD, COMPACT
Temper	GROG & GRIT
Color, Core	
Color, Exterior	DARK GRAY FIRECLOUDS, WHITE, VERY PALE BROWN
Color, Interior	VERY PALE BROWN
Overall Height cm	
Weight g	
Volume liters	
Use/Wear/Condition	FIRE CLOUDS
Shape / Description	SQUAT, PEDESTALLED BOTTLE WITH SHORT CYLINDRICAL NECK, FLARING RIM, 3 NODES IN PEDESTAL
Lip Treatment	FLATTENED, EVERTED
Orifice Diameter cm	5.4
Rim Height cm	5.7
Rim Thickness cm	.2
Rim Surface Treatment	SMOOTHED & BURNISHED
Rim Decorative Treatment	
Rim/Neck Shape	SPOOL, INSLOPING
Body Maximum Diameter cm	14.7
Body Height cm	7.3
Body Thickness cm	.5
Body Surface Treatment	SMOOTHED & BURNISHED
Body Decorative Treatment	TRAILING
Body Shape	SUB-GLOBULAR
Base Shape	CIRCULAR, FLAT, PEDESTAL
Base Diameter cm	6.2
Base Height cm	2.3
Base Surface Treatment	
Base Decorative Treatment	
Appendages	PEDESTAL-OUTSLANTING CYLINDRICAL WITH 3 NODES
Notes	Huddleston Grave 3, 4/29-5/5/1939 (with 1-32, 1-34, 1-41?, 1-50), late Social Hill to Deceiper phase; Huddleston sketch in notebook; Phillips photo 3858

JEC Hodges Collection, 77-1  
 East Place, 3CL21



Item No./Hodges Catalog	1-14, 2694
Vessel Form	effigy bowl
AAS/HSU Digital Photo No.	1201
Type	East Incised
Decoration	red slipped/incised/effigy
Rim :: Body	Bates 15 or Barrington 5 :: plain
Paste	SOFT, GRANULAR, COMPACT
Temper	GROG
Color, Core	
Color, Exterior	RED (2.5YR4/8)
Color, Interior	RED (2.5YR4/8)
Overall Height cm	7.7
Weight g	326
Volume liters	
Use/Wear/Condition	VESSEL RECONSTRUCTED AND BADLY PLASTERED (TAIL TAB), NO APPARENT WEAR, SLIP WORN OFF INTERIOR OF HEAD SMALL EFFIGY VESSEL, SHALLOW BOWL WITH ANIMAL HEAD (FOX?) RIDING ON RIM FACING UP; ABRUPT BREAK BETWEEN BASE AND BODY
Shape / Description	
Lip Treatment	FLATTENED, DIRECT
Orifice Diameter cm	13.9
Rim Height cm	2.6
Rim Thickness cm	.6
Rim Surface Treatment	SMOOTHED & BURNISHED & SLIPPED RED SLIPPED INT AND EXT AND ORANGE INCISED HORIZONTAL LINES-PARTLY SMOOTHED OVER 4 INCISED LINES (0.1CM WIDE, .5-.6CM APART), NO OVERHANGING-5 UNDER HEAD APPENDAGE
Rim Decorative Treatment	
Rim/Neck Shape	STRAIGHT, OUTSLANTED
Body Maximum Diameter cm	11.6
Body Height cm	4.8
Body Thickness cm	.6
Body Surface Treatment	SMOOTHED & BURNISHED & SLIPPED
Body Decorative Treatment	
Body Shape	CONICAL
Base Shape	CIRCULAR, FLAT; BASE RECONSTR WITH PLASTER
Base Diameter cm	8.8
Base Height cm	
Base Surface Treatment	
Base Decorative Treatment	
Appendages	ANIMAL HEAD ON RIM-TAIL LUG RECONSTR WITH PLASTER
Notes	Huddleston Grave B, 11/21/1942 (with 1-2, 1-3) East phase

JEC Hodges Collection, 77-1  
 East Place, 3CL21



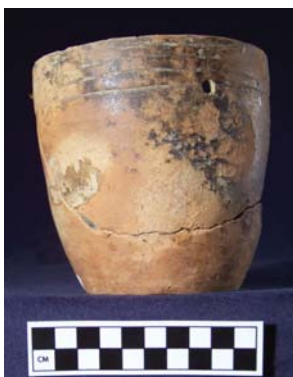
Item No./Hodges Catalog	1-16, 2097 (Huddleston 245?)
Vessel Form	Bottle, pedestalled
AAS/HSU Digital Photo No.	1817
Type	Keno Trailed <i>var. Red Hill</i>
Decoration	incised/trailed
Rim :: Body	plain :: Belhaven 33 (type)
Paste	SOFT, FINE, SILTY, COMPACT
Temper	SHELL (SOME LEACHED)
Color, Core	VERY DARK GRAYISH BROWN (10YR3/2) REDDISH YELLOW (5YR6/6), YELLOWISH RED (5YR4/8), GRAY (10YR5/1)
Color, Exterior	LIGHT YELLOWISH BROWN (10YR6/4), DARK GRAYISH BROWN (10YR4/2)
Color, Interior	(10YR4/2)
Overall Height cm	17.9
Weight g	514
Volume liters	
Use/Wear/Condition	NO USEWEAR APPARENT, VESSEL BROKEN, POORLY MENDED, PLASTERED. BOTTLE IRREGULAR.
Shape / Description	SHORT SQUAT BOTTLE WITH SHORT NECK AND FLARED RIM, PEDESTAL BASE
Lip Treatment	FLAT, EVERTED
Orifice Diameter cm	5.8
Rim Height cm	5.4
Rim Thickness cm	.6
Rim Surface Treatment	SMOOTHED & BURNISHED
Rim Decorative Treatment	WIDE LINE (2-3MM) ENGRAVED AROUND BOTTLE NECK AT JUNCTION OF NECK AND BODY
Rim/Neck Shape	SPOOL
Body Maximum Diameter cm	14.3
Body Height cm	10.8
Body Thickness cm	.6
Body Surface Treatment	SMOOTHED & BURNISHED
Body Decorative Treatment	INCISED, VERY REGULAR LINES SPACED ABOUT 1-2MM APART
Body Shape	SUB-GLOBULAR
Base Shape	CIRCULAR, CONCAVE, PEDESTAL
Base Diameter cm	8.7
Base Height cm	1.6
Base Surface Treatment	
Base Decorative Treatment	
Appendages	
Notes	Huddleston Grave 7, 8/5/1939 (with 1-33), late Social Hill to Deceiper phase

JEC Hodges Collection, 77-1  
 East Place, 3CL21



Item No./Hodges Catalog	1-17, 2726
Vessel Form	beaker
AAS/HSU Digital Photo No.	K5133
Type	East Incised
Decoration	incised
Rim :: Body	Barrington 1 :: plain
Paste	HARD, SMOOTH, COMPACT
Temper	GROG
Color, Core	
Color, Exterior	5YR5/6, 10YR4/1, 7.5YR6/6
Color, Interior	7.5YR5/4, 10YR6/1
Overall Height cm	11.1
Weight g	376
Volume liters	0.775
Use/Wear/Condition	
Shape / Description	BEAKER WITH INCISING AT RIM, 2 SUSPENSION HOLES
Lip Treatment	ROUNDED
Orifice Diameter cm	10.7
Rim Height cm	
Rim Thickness cm	0.43
Rim Surface Treatment	
Rim Decorative Treatment	INCISED LINES, 7 LINES 1MM THICK, 2-4MM APART, A LITTLE SLOPPY, PARTLY SMOOTHED OVER
Rim/Neck Shape	CONVEX, INSLANTED
Body Maximum Diameter cm	12.2
Body Height cm	
Body Thickness cm	0.6
Body Surface Treatment	BURNISHED
Body Decorative Treatment	PLAIN
Body Shape	OVOID
Base Shape	CIRCULAR, SLIGHTLY CONVEX
Base Diameter cm	8
Base Height cm	
Base Surface Treatment	
Base Decorative Treatment	
Appendages	SUSPENSION HOLES 2 HOLES .3MM DRILLED FROM OUTSIDE AND INSIDE AFTER FIRING
Notes	Huddleston Grave D, 12/13/1942 (with 1-7), East phase; previous illustration Newell & Krieger 1949: Fig. 65D

JEC Hodges Collection, 77-1  
 East Place, 3CL21



Item No./Hodges Catalog	1-18, 2710
Vessel Form	beaker
AAS/HSU Digital Photo No.	K5165
Type	East Incised
Decoration	incised
Rim :: Body	Bates 3 :: plain
Paste	
Temper	GROG
Color, Core	
Color, Exterior	5YR5/6, 5YR4/4, 10YR6/3
Color, Interior	
Overall Height cm	11.8
Weight g	438
Volume liters	0.7
Use/Wear/Condition	FIRECLOUDS ON BODY
Shape / Description	BEAKER WITH INCISED LINES AND SUSPENSION HOLES
Lip Treatment	ROUND FLATTENED
Orifice Diameter cm	11.6
Rim Height cm	
Rim Thickness cm	0.5
Rim Surface Treatment	BURNISHED
Rim Decorative Treatment	INCISED LINES, 4 CONCENTRIC LINES 5-9MM APART, 1MM WIDE
Rim/Neck Shape	STRAIGHT, SLIGHTLY OUTSLANTED
Body Maximum Diameter cm	11.2
Body Height cm	
Body Thickness cm	0.5
Body Surface Treatment	BURNISHED
Body Decorative Treatment	PLAIN
Body Shape	OVOID
Base Shape	CIRCULAR, FLAT
Base Diameter cm	7.7
Base Height cm	
Base Surface Treatment	BURNISHED
Base Decorative Treatment	SUSPENSION HOLES, 2, DRILLED FROM OUTSIDE, AT LEVEL OF INCISED LINES
Appendages	
Notes	Huddleston Grave C, 12/12/1942 (with 1-25), East phase

JEC Hodges Collection, 77-1  
 East Place, 3CL21



Item No./Hodges Catalog	1-19, 2690
Vessel Form	beaker
AAS/HSU Digital Photo No.	591
Type	East Incised
Decoration	red slipped/incised
Rim :: Body	Barrington 7 :: plain
Paste	
Temper	GROG & CLAYGRIT
Color, Core	
Color, Exterior	RED, GRAY, REDDISH YELLOW
Color, Interior	RED, GRAY, REDDISH YELLOW
Overall Height cm	
Weight g	
Volume liters	
Use/Wear/Condition	FIRE CLOUDS
Shape / Description	JAR-BEAKER
Lip Treatment	DIRECT
Orifice Diameter cm	10.0
Rim Height cm	2.1
Rim Thickness cm	.7
Rim Surface Treatment	SMOOTHED & BURNISHED & SLIPPED
Rim Decorative Treatment	INCISED
Rim/Neck Shape	CONVEX, VERTICAL
Body Maximum Diameter cm	10.9
Body Height cm	10.2
Body Thickness cm	.6
Body Surface Treatment	SMOOTHED & BURNISHED & SLIPPED
Body Decorative Treatment	
Body Shape	BARREL SHAPED
Base Shape	CIRCULAR, FLAT
Base Diameter cm	7.5
Base Height cm	
Base Surface Treatment	
Base Decorative Treatment	
Appendages	SUSPENSION HOLES
Notes	Huddleston Grave A', 11/14/1942 (with 1-4, 1-30, 1-31, 1-46?), East phase

JEC Hodges Collection, 77-1  
 East Place, 3CL21



Item No./Hodges Catalog	1-20, 2729
Vessel Form	jar, tall rim
AAS/HSU Digital Photo No.	K5129
Type	Pease Brushed-Incised
Decoration	incised/punctated
Rim :: Body	Andes 10? :: Alma 3
Paste	HARD, SMOOTH, COMPACT
Temper	GROG
Color, Core	10YR8/4, 2.5YR6/8
Color, Exterior	5YR6/6, 5YR4/1, 7.5YR7/6
Color, Interior	5YR6/6, 10YR4/1
Overall Height cm	17.4
Weight g	767
Volume liters	1.8
Use/Wear/Condition	NONE; MISSING PIECES OF RIM/LIP AND BODY
Shape / Description	TALL RIM JAR, INCISED
Lip Treatment	ROUNDED
Orifice Diameter cm	15.2
Rim Height cm	4.7
Rim Thickness cm	0.722
Rim Surface Treatment	SMOOTHED
Rim Decorative Treatment	INCISED DIAGONAL LINES SEP. BY TOOL PUNCT.
Rim/Neck Shape	SLIGHTLY CONCAVE, OUTSLANTED
Body Maximum Diameter cm	16.6
Body Height cm	15.2
Body Thickness cm	0.756
Body Surface Treatment	SMOOTHED
Body Decorative Treatment	WIDE INCISING, VERTICAL LINES SEPARATING NESTED TRIANGLES
Body Shape	OVOID
Base Shape	CIRCULAR, FLAT
Base Diameter cm	9.236
Base Height cm	
Base Surface Treatment	SMOOTHED
Base Decorative Treatment	
Appendages	
Notes	Huddleston Grave E, 12/18/1942, East phase

JEC Hodges Collection, 77-1  
 East Place, 3CL21



Item No./Hodges Catalog	1-21, 2643
Vessel Form	jar, short rim
AAS/HSU Digital Photo No.	1144
Type	sim. to Military Road Incised
Decoration	brushed/incised/punctated
Rim :: Body	Dana 4 :: Altus 4
Paste	MEDIUM-HARD, COARSE, CRUMBLY
Temper	GROG
Color, Core	5YR5/1, 5YR6/1
Color, Exterior	5YR5/4, 5YR4/3, 5YR4/1
Color, Interior	5YR6/6, 5YR5/6, 5YR6/2
Overall Height cm	12.9
Weight g	352
Volume liters	
Use/Wear/Condition	NONE APPARENT, VESSEL INTACT EXCEPT FOR BROKEN RIM-ABOUT HALF OF RIM MISSING WITH 2 SHERDS GLUED IN
Shape / Description	SHORT RIM JAR, INCISED/PUNCTATED DECORATION
Lip Treatment	FLATTENED, SLIGHTLY BEVELED, SLIGHTLY EVERTED
Orifice Diameter cm	11.0
Rim Height cm	2.9
Rim Thickness cm	.4
Rim Surface Treatment	BRUSHED
Rim Decorative Treatment	
Rim/Neck Shape	STRAIGHT, OUTSLANTED
Body Maximum Diameter cm	11.4
Body Height cm	10
Body Thickness cm	.5
Body Surface Treatment	SMOOTHED & BURNISHED (INTERIOR) BODY COVERED WITH INCISING (SHORT HERRINGBONE DESIGN) AND PUNCTATIONS IN 3 LINES (LOOKS LIKE SQUARISH RATHER THAN 'C'-ISH)
Body Decorative Treatment	
Body Shape	HIGH-WAISTED, ELONGATED
Base Shape	CIRCULAR, FLAT
Base Diameter cm	7.0
Base Height cm	
Base Surface Treatment	
Base Decorative Treatment	
Appendages	
Notes	Related to Sinner Linear Punctated? Huddleston Grave XX, 9/19/1942 (with 1-22), East to Mid-Ouachita phase



JEC Hodges Collection, 77-1  
East Place, 3CL21



Item No./Hodges Catalog	1-22, 2642
Vessel Form	jar, tall rim
AAS/HSU Digital Photo No.	1167
Type	Pease Brushed-Incised?
Decoration	incised/applique
Rim :: Body	Butler 1 :: Alma 3?
Paste	MEDIUM-HARD, COMPACT
Temper	GROG
Color, Core	
Color, Exterior	5YR6/4, 5YR6/2, 5YR5/6
Color, Interior	5YR5/3, 5YR5/6, SOOTING
Overall Height cm	12.4
Weight g	388
Volume liters	
Use/Wear/Condition	SOOTING ON VESSEL INTERIOR, INSIDE LIP, TRACE ON EXTERIOR AROUND SHOULDER. CHIP OFF RIM
Shape / Description	SMALL TALL RIM JAR - FLAT BOTTOMED, SUBGLOBULAR BODY - FLARED RIM - INCISED AND NODED DECORATION
Lip Treatment	ROUNDED, SLIGHTLY EVERTED
Orifice Diameter cm	12.3
Rim Height cm	3.9
Rim Thickness cm	.5
Rim Surface Treatment	SMOOTHED
Rim Decorative Treatment	INCISED DECORATION - MULTIPLE HORIZONTAL LINES (13-14 LINES), LINES <.1 WIDE - 2-3MM APART
Rim/Neck Shape	STRAIGHT, OUTSLANTED
Body Maximum Diameter cm	11.5
Body Height cm	8.3
Body Thickness cm	4
Body Surface Treatment	SMOOTHED
Body Decorative Treatment	INCISED DECORATION-MULTIPLE INCISED LINES FORM DIAGONAL PATTERNS - SEPARATED INTO PANELS WITH NODES AND VERTICAL LINES (3-4)
Body Shape	SUBGLOBULAR, MAX DIA. 1/3 WAY FROM TOP OF BODY
Base Shape	CIRCULAR, FLAT
Base Diameter cm	7.3
Base Height cm	
Base Surface Treatment	
Base Decorative Treatment	
Appendages	7 ELONGATED NODES APPLIQUED AROUND BODY AT MAX BODY DIAM. - NOT HANDLES OR TABS
Notes	Huddleston Grave XX, 9/19/1942 (with 1-21), East to Mid-Ouachita phase; previous illustration Newell & Krieger 1949: Fig. 65M

JEC Hodges Collection, 77-1  
 East Place, 3CL21



Item No./Hodges Catalog	1-23, 2512
Vessel Form	bottle
AAS/HSU Digital Photo No.	K5141
Type	Adair Engraved
Decoration	engraved/appliqued
Rim :: Body	Eagle 3 :: Eric 1
Paste	SOFT, SMOOTH, COMPACT
Temper	GROG
Color, Core	
Color, Exterior	5YR5/6, 7.5YR5/2, 7.5YR3/1
Color, Interior	
Overall Height cm	22.4
Weight g	640
Volume liters	1.4
Use/Wear/Condition	NONE; SURFACE IS ERODED AND WORN
Shape / Description	BOTTLE, ENGRAVED AND APPLIQUE
Lip Treatment	ROUNDED, SMOOTHED
Orifice Diameter cm	4.3
Rim Height cm	7.7
Rim Thickness cm	0.52
Rim Surface Treatment	ERODED
Rim Decorative Treatment	INCISED LINE AT JUNCTION OF NECK & BODY
Rim/Neck Shape	INSLOPING
Body Maximum Diameter cm	14.5
Body Height cm	14.9
Body Thickness cm	
Body Surface Treatment	ERODED
Body Decorative Treatment	CONCENTRIC ENGR LINES, CROSSHATCHED, VERTICAL IRREGULAR APPLIQUES
Body Shape	LOW-WAISTED
Base Shape	CIRCULAR
Base Diameter cm	13
Base Height cm	
Base Surface Treatment	ERODED
Base Decorative Treatment	
Appendages	VERTICAL APPLIQUED STRIPS ON BODY
Notes	Huddleston Grave X or Y, 12/6/1941 (with 1-47), Mid-Ouachita phase

JEC Hodges Collection, 77-1  
 East Place, 3CL21



Item No./Hodges Catalog	1-24, 2742
Vessel Form	bottle
AAS/HSU Digital Photo No.	1408
Type	Smithport Plain
Decoration	plain
Rim :: Body	plain :: plain
Paste	GRANULAR, GRITTY
Temper	GROG & CLAYGRIT
Color, Core	
Color, Exterior	REDDISH YELLOW, BLACK FIRECLOUDS
Color, Interior	
Overall Height cm	29.9
Weight g	710
Volume liters	
Use/Wear/Condition	FIRECLOUDS, BLACK RESIDUE ON BODY EXTERIOR
Shape / Description	TALL, GLOBULAR BOTTLE WITH VERY TALL NECK. FLAT, CIRCULAR BASE
Lip Treatment	ROUNDED
Orifice Diameter cm	4.0
Rim Height cm	15.2
Rim Thickness cm	.3
Rim Surface Treatment	SMOOTHED & SLIPPED
Rim Decorative Treatment	
Rim/Neck Shape	INSLOPING, LONG NECKED
Body Maximum Diameter cm	13.4
Body Height cm	14.7
Body Thickness cm	
Body Surface Treatment	SMOOTHED & SLIPPED
Body Decorative Treatment	
Body Shape	BARREL SHAPED
Base Shape	CIRCULAR, FLAT
Base Diameter cm	8.5
Base Height cm	
Base Surface Treatment	
Base Decorative Treatment	
Appendages	
Notes	Huddleston Grave F, 1/1/1943 (with 1-8, 1-29, 1-43, 1-44?), East phase

JEC Hodges Collection, 77-1  
 East Place, 3CL21



Item No./Hodges Catalog	1-25, 2708
Vessel Form	bottle
AAS/HSU Digital Photo No.	K5150
Type	sim. to Hickory Fine Engraved
Decoration	Incised (dry paste)
Rim :: Body	Bates 9 :: plain
Paste	HARD, SMOOTH, COMPACT
Temper	GROG
Color, Core	7.5YR5/3
Color, Exterior	5YR4/6, 7.5YR5/2, 7.5YR3/1
Color, Interior	
Overall Height cm	25.5
Weight g	890
Volume liters	1.3
Use/Wear/Condition	FIRECLOUDING ON BODY & NECK; SCUFFING ON SIDE AND BOTTOM
Shape / Description	INCISED BOTTLE PEDESTAL BASE
Lip Treatment	
Orifice Diameter cm	
Rim Height cm	11
Rim Thickness cm	0.455
Rim Surface Treatment	BURNISHED
Rim Decorative Treatment	
Rim/Neck Shape	INSLOPING
Body Maximum Diameter cm	15.5
Body Height cm	10.5
Body Thickness cm	
Body Surface Treatment	BURNISHED
Body Decorative Treatment	INCISED, 6 CONCENTRIC LINES BELOW NECK, 1MM WIDE, 5MM APART, DRY PASTE INCISIING
Body Shape	SUBGLOBULAR
Base Shape	CIRCULAR, FLAT, PEDESTAL
Base Diameter cm	11
Base Height cm	4
Base Surface Treatment	
Base Decorative Treatment	
Appendages	
Notes	Huddleston Grave C, 12/12/1942 (with 1-18), East phase

JEC Hodges Collection, 77-1  
 East Place, 3CL21



Item No./Hodges Catalog	1-28, 2493
Vessel Form	jar, short rim
AAS/HSU Digital Photo No.	K5159
Type	
Decoration	incised/punctated
Rim :: Body	Caldwell 3? :: Claflin new
Paste	HARD, SMOOTH, COMPACT
Temper	GROG
Color, Core	10YR6/2, 7.5YR4/2
Color, Exterior	2.5YR6/6, 7.5YR6/4, 10YR6/1
Color, Interior	5YR6/6, 10YR6/2
Overall Height cm	9.9
Weight g	246
Volume liters	0.3
Use/Wear/Condition	NONE; MISSING MOST OF RIM/LIP, PART OF BODY
Shape / Description	JAR, SHORT RIM, INCISED & PUNCTATED
Lip Treatment	FLATTENED, SLIGHTLY EVERTED
Orifice Diameter cm	9.6
Rim Height cm	2.4
Rim Thickness cm	0.535
Rim Surface Treatment	SMOOTHED
Rim Decorative Treatment	2-3 ROW OF PUNCTATES UNDER LIP, ROW OF CURVED LINES EXTENDING TO BODY
Rim/Neck Shape	STRAIGHT, SLIGHTLY OUTSLANTED
Body Maximum Diameter cm	10.5
Body Height cm	8
Body Thickness cm	0.582
Body Surface Treatment	SMOOTHED, ERODED
Body Decorative Treatment	INCISED, PUNCTATED, INCISED SECTIONS FRAMED BY PUNCT DESIGN
Body Shape	HIGH WAISTED
Base Shape	CIRCULAR, FLAT
Base Diameter cm	6.2
Base Height cm	
Base Surface Treatment	SMOOTHED, ERODED
Base Decorative Treatment	
Appendages	
Notes	Related to Sinner Linear-Punctated?; Huddleston Grave X, 5/9/1941 (with 1-1, 1-5, 1-9), East phase

JEC Hodges Collection, 77-1  
 East Place, 3CL21



Item No./Hodges Catalog	1-29, 2744
Vessel Form	jar, tall rim
AAS/HSU Digital Photo No.	K8188
Type	Pease Brushed-Incised
Decoration	incised
Rim :: Body	Beloit 1 :: Alpha 2
Paste	HARD, SMOOTH, COMPACT
Temper	GROG
Color, Core	
Color, Exterior	5YR5/8, 5YR7/4, 5YR6/3
Color, Interior	7.5YR3/1
Overall Height cm	19.5
Weight g	989
Volume liters	2.1
Use/Wear/Condition	WEAR ON BOTTOM; CARBONIZED ON INTERIOR (SPOTTY BLACK RESIDUE ON BASE & EXT) PUBL SUHM & JELKS 1962 PLATE 60E
Shape / Description	JAR, TALL RIM, INCISED
Lip Treatment	BEVELED EXT
Orifice Diameter cm	17.5
Rim Height cm	6
Rim Thickness cm	0.4
Rim Surface Treatment	SMOOTHED
Rim Decorative Treatment	4 RIM PEAKS, ROW OF PUNCTATES, 5-6 HORIZ INCISED LINES, ROW VERT PUNCT
Rim/Neck Shape	STRAIGHT, OUTSLANTED
Body Maximum Diameter cm	15
Body Height cm	13.5
Body Thickness cm	0.7
Body Surface Treatment	SMOOTHED
Body Decorative Treatment	INCISED, VERT INCISED LINES DIVIDE CHEVRONS
Body Shape	HIGH-WAISTED
Base Shape	CIRCULAR, FLAT
Base Diameter cm	9
Base Height cm	
Base Surface Treatment	
Base Decorative Treatment	
Appendages	
Notes	Huddleston Grave F, 1/1/1943 (with 1-8, 1-24, 1-43, 1-44?), East phase; previous illustration Newell & Krieger 1949: Fig. 65N; Suhm & Jelks 1962: Plate 60E

JEC Hodges Collection, 77-1  
 East Place, 3CL21



Item No./Hodges Catalog	1-30, 2688
Vessel Form	bottle
AAS/HSU Digital Photo No.	587
Type	Smithport Plain
Decoration	red slipped
Rim :: Body	plain :: plain
Paste	HARD, GRITTY, COMPACT
Temper	GROG & CLAYGRIT
Color, Core	
Color, Exterior	RED
Color, Interior	
Overall Height cm	
Weight g	
Volume liters	
Use/Wear/Condition	FIRE CLOUDS
Shape / Description	BOTTLE-GLOBULAR BODY AND LONG NECK; FLAT BASE
Lip Treatment	DIRECT
Orifice Diameter cm	4.0
Rim Height cm	16.2
Rim Thickness cm	.4
Rim Surface Treatment	SMOOTHED & SLIPPED
Rim Decorative Treatment	
Rim/Neck Shape	INSLOPING, LONG NECK
Body Maximum Diameter cm	14.9
Body Height cm	12.7
Body Thickness cm	
Body Surface Treatment	SMOOTHED & SLIPPED
Body Decorative Treatment	
Body Shape	GLOBULAR
Base Shape	CIRCULAR, FLAT
Base Diameter cm	11.2
Base Height cm	
Base Surface Treatment	
Base Decorative Treatment	
Appendages	
Notes	Huddleston Grave A, 11/14/1942 (with 1-4, 1-19, 1-31, 1-46?), East phase

JEC Hodges Collection, 77-1  
 East Place, 3CL21



Item No./Hodges Catalog	1-31, 2692
Vessel Form	bottle
AAS/HSU Digital Photo No.	K8168
Type	Hickory Fine Engraved
Decoration	engraved
Rim :: Body	plain :: Erie 13
Paste	HARD, SMOOTH, COMPACT
Temper	GROG & BONE
Color, Core	
Color, Exterior	7.5YR7/6, 7.5YR8/3
Color, Interior	
Overall Height cm	34.5
Weight g	904
Volume liters	
Use/Wear/Condition	FIRE CLOUDS ON NECK; MISSING SHERD ON NECK AND BODY, PATCHED
Shape / Description	BOTTLE, LONG NECKED
Lip Treatment	FLAT
Orifice Diameter cm	4
Rim Height cm	16
Rim Thickness cm	0.5
Rim Surface Treatment	SMOOTHED
Rim Decorative Treatment	
Rim/Neck Shape	INSLOPING, LONG NECKED
Body Maximum Diameter cm	17
Body Height cm	18.5
Body Thickness cm	
Body Surface Treatment	SMOOTHED
Body Decorative Treatment	5 ENGRAVED LINES UPPER BODY, THIN LINES 6MM APART
Body Shape	LOW WAISTED
Base Shape	CIRCULAR FLAT
Base Diameter cm	9.5
Base Height cm	
Base Surface Treatment	SMOOTHED
Base Decorative Treatment	
Appendages	
Notes	Huddleston Grave A, 11/14/1942 (with 1-4, 1-19, 1-30, 1-46?), East phase



JEC Hodges Collection, 77-1  
 East Place, 3CL21



Item No./Hodges Catalog	1-32, 1379 (Huddleston 204)
Vessel Form	bowl, carinated
AAS/HSU Digital Photo No.	K8264
Type	Means Engraved
Decoration	engraved
Rim :: Body	Enos 15? 16? :: plain
Paste	HARD, SMOOTH, COMPACT
Temper	GROG & SHELL (LEACHED)
Color, Core	10YR4/1
Color, Exterior	10YR3/1, 10YR4/2, 7.5YR4/3
Color, Interior	10YR4/2, 10YR2/1
Overall Height cm	7
Weight g	234
Volume liters	
Use/Wear/Condition	FIRECLOUDING;PARTIAL, MISSING LG PIECES OF LIP, RIM, BODY
Shape / Description	CARINATED BOWL
Lip Treatment	FLATTENED, SLIGHTLY EVERTED
Orifice Diameter cm	17.3
Rim Height cm	3
Rim Thickness cm	0.5
Rim Surface Treatment	BURNISHED
Rim Decorative Treatment	ENGRAVED, ALTERNATING PATTERN WITH TICKED LINES, NODES
Rim/Neck Shape	STRAIGHT, INSLANTED
Body Maximum Diameter cm	18
Body Height cm	4
Body Thickness cm	0.4
Body Surface Treatment	BURNISHED
Body Decorative Treatment	
Body Shape	CONICAL
Base Shape	CIRCULAR, SLIGHTLY CONCAVE
Base Diameter cm	5
Base Height cm	
Base Surface Treatment	BURNISHED
Base Decorative Treatment	
Appendages	2 SMALL NODES AT BASE OF RIM
Notes	Huddleston Grave 3, 4/29-5/5/1939 (with 1-13, 1-34, 1-41?, 1-50), late Social Hill to Deceiper phase; Phillips photo 3927

JEC Hodges Collection, 77-1  
 East Place, 3CL21



Item No./Hodges Catalog	1-33, 2098 (Huddleston 244)
Vessel Form	bowl, carinated
AAS/HSU Digital Photo No.	K8269
Type	Means Engraved
Decoration	engraved
Rim :: Body	Enos 14 :: plain
Paste	HARD, SMOOTH, COMPACT
Temper	SHELL (LEACHED) & GROG
Color, Core	7.5YR4/1
Color, Exterior	5YR7/6, 5YR4/1, 7.5YR6/4
Color, Interior	7.5YR7/3, 7.5YR4/1
Overall Height cm	7.2
Weight g	256
Volume liters	
Use/Wear/Condition	A LITTLE FIRECLOUDING; PART OF BASE & RIM MISSING
Shape / Description	CARINATED BOWL
Lip Treatment	ROUNDED, SLIGHTLY EVERTED
Orifice Diameter cm	17.4
Rim Height cm	2.4
Rim Thickness cm	0.5
Rim Surface Treatment	BURNISHED
Rim Decorative Treatment	ENGRAVED; 3 TICKED LINES, HORIZ, REPEATS 2X
Rim/Neck Shape	STRAIGHT, INSLANTED
Body Maximum Diameter cm	18.8
Body Height cm	4.8
Body Thickness cm	0.6
Body Surface Treatment	BURNISHED
Body Decorative Treatment	
Body Shape	CONICAL
Base Shape	CIRCULAR, FLAT
Base Diameter cm	4.5
Base Height cm	
Base Surface Treatment	BURNISHED
Base Decorative Treatment	
Appendages	2 NODES AT RIM/BODY JUNCTURE WITH 'SUNRISE' DEC ABOVE
Notes	Huddleston Grave 7, 8/5/1939 (with 1-16), late Social Hill to Deceiper phase

JEC Hodges Collection, 77-1  
East Place, 3CL21



Item No./Hodges Catalog	1-34, 1373 (Huddleston 202)
Vessel Form	bowl
AAS/HSU Digital Photo No.	1348
Type	Maddox Engraved
Decoration	engraved/notched lip/slipped?
Rim :: Body	Cornell :: Elmira? Erasmus?
Paste	HARD, COMPACT
Temper	NONE VISIBLE
Color, Core	
Color, Exterior	BLACK, BROWN, REDDISH BROWN
Color, Interior	YELLOWISH BROWN
Overall Height cm	9.0
Weight g	270
Volume liters	
Use/Wear/Condition	
Shape / Description	SQUAT, GLOBULAR BOWL WITH SUSPENSION HOLE TABS ON RIM, POORLY DEFINED FLAT BASE
Lip Treatment	INCURVED, PUNCTATED
Orifice Diameter cm	8.9
Rim Height cm	
Rim Thickness cm	
Rim Surface Treatment	
Rim Decorative Treatment	
Rim/Neck Shape	CONVEX, INSLANTED
Body Maximum Diameter cm	13.3
Body Height cm	8.6
Body Thickness cm	.4
Body Surface Treatment	SMOOTHED & SLIPPED & BURNISHED
Body Decorative Treatment	ENGRAVING
Body Shape	SUB-GLOBULAR
Base Shape	CIRCULAR, FLAT
Base Diameter cm	4.3
Base Height cm	
Base Surface Treatment	
Base Decorative Treatment	
Appendages	2 OPPOSING RIM TABS WITH SUSPENSION HOLES
Notes	Huddleston Grave 3, 4/29-5/5/1939 (with 1-13, 1-32, 1-41?, 1-50), late Social Hill to Deceiper phase; Phillips photo 3869

JEC Hodges Collection, 77-1  
 East Place, 3CL21



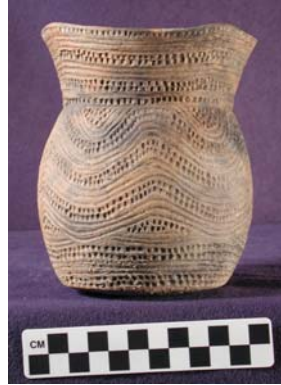
Item No./Hodges Catalog	1-35, 1388 (Huddleston 226?)
Vessel Form	bowl, simple
AAS/HSU Digital Photo No.	1113
Type	
Decoration	notched lip
Rim :: Body	Cornell :: plain
Paste	HARD, FINE, COMPACT
Temper	GROG
Color, Core	
Color, Exterior	10YR3/2, 10YR2/1, 10YR4/3
Color, Interior	
Overall Height cm	10.7
Weight g	474
Volume liters	
Use/Wear/Condition	SOME SCRATCHES ON INSIDE ON LOWER EDGES, RIM IS A LITTLE ERODED. HAS REMNANTS OF OLD RED TAG ON INSIDE VESSEL IN 3 PIECES AND HAD BEEN GLUED TOGETHER
Shape / Description	OPEN BOWL-SEMIROUNDED BASE- FLARED WALLS-SLIGHTLY OUTFLARED RIM
Lip Treatment	ROUNDED, SLIGHTLY EVERTED, NOTCHING ON LIP, 3-7MM APART
Orifice Diameter cm	16.7
Rim Height cm	
Rim Thickness cm	.5
Rim Surface Treatment	
Rim Decorative Treatment	
Rim/Neck Shape	STRAIGHT, OUTSLANTED
Body Maximum Diameter cm	16.7
Body Height cm	10.7
Body Thickness cm	.5
Body Surface Treatment	SMOOTHED & BURNISHED
Body Decorative Treatment	PLAIN
Body Shape	CONICAL
Base Shape	UNDISTINGUISHED, CONVEX
Base Diameter cm	
Base Height cm	
Base Surface Treatment	
Base Decorative Treatment	
Appendages	
Notes	sim. To Hardman Engraved in shape, lip notching; Huddleston Grave 4, 5/27/1939 (with 1-38, 1-39, 1-42), late Mid-Ouachita to Social Hill phase

JEC Hodges Collection, 77-1  
East Place, 3CL21



Item No./Hodges Catalog	1-36, 1376 (Huddleston 199)
Vessel Form	bowl, carinated, tall rim
AAS/HSU Digital Photo No.	K8437
Type	Means Engraved ?
Decoration	engraved
Rim :: Body	Elgin 12 :: Enos new
Paste	HARD, SMOOTH, COMPACT
Temper	GROG & SHELL (LEACHED)
Color, Core	
Color, Exterior	5YR5/2, 5YR3/1, 5YR6/4
Color, Interior	5YR6/4, 5YR3/1
Overall Height cm	7.8
Weight g	142
Volume liters	0.4
Use/Wear/Condition	SOME INT/EXT PITTING, PROB POST-DEP; 1/4 OF RIM MISSING, RECONST W RED PLASTER
Shape / Description	CARINATED BOWL W TALL RIM
Lip Treatment	ROUNDED, THINNED
Orifice Diameter cm	12
Rim Height cm	3.8
Rim Thickness cm	0.3
Rim Surface Treatment	BURNISHED
Rim Decorative Treatment	ENGRAVED, 4 HORIZ LINES, TICKED & PLAIN
Rim/Neck Shape	STRAIGHT, OUTSLANTED
Body Maximum Diameter cm	10.2
Body Height cm	4
Body Thickness cm	0.4
Body Surface Treatment	BURNISHED
Body Decorative Treatment	ENGRAVED, DIAGONAL TICKED LIINES ON UPPER BODY, RED PIGMENT IN LINES
Body Shape	COMPOUND, CONICAL/CYLINDRICAL
Base Shape	CIRCULAR, FLAT
Base Diameter cm	4.5
Base Height cm	
Base Surface Treatment	BURNISHED
Base Decorative Treatment	
Appendages	
Notes	Huddleston Grave 1 or 2, 4/29/1939 (with 1-12, 1-48, 1-49), late Social Hill to Deceiper phase, Phillips photo 3870

JEC Hodges Collection, 77-1  
 East Place, 3CL21



Item No./Hodges Catalog	1-37, 2756
Vessel Form	jar, short rim
AAS/HSU Digital Photo No.	1345
Type	Military Road Incised (early variant?)
Decoration	incised/punctated
Rim :: Body	Beloit 2 (type) :: Clinton 12 (type), Bard 2?
Paste	
Temper	GROG & CLAYGRIT
Color, Core	
Color, Exterior	REDDISH YELLOW, RED, LIGHT RED
Color, Interior	DARK GRAY, RED
Overall Height cm	14.4
Weight g	476
Volume liters	
Use/Wear/Condition	FIRE CLOUD
Shape / Description	JAR; GLOBULAR BODY; ROUNDED BASE; FLARED RIM; SLIGHTLY CASTELATED RIM
Lip Treatment	CASTELATED
Orifice Diameter cm	11.7
Rim Height cm	4.1
Rim Thickness cm	.6
Rim Surface Treatment	SMOOTHED
Rim Decorative Treatment	PUNCTATED, INCISED
Rim/Neck Shape	STRAIGHT, OUTSLANTED
Body Maximum Diameter cm	11.3
Body Height cm	9.7
Body Thickness cm	.5
Body Surface Treatment	SMOOTHED
Body Decorative Treatment	PUNCTATED, INCISED
Body Shape	SUB-GLOBULAR
Base Shape	CIRCULAR, FLAT
Base Diameter cm	8.7
Base Height cm	
Base Surface Treatment	
Base Decorative Treatment	
Appendages	
Notes	Huddleston Grave G, 1/16/1943 (with 1-6), East to Mid-Ouachita phase

JEC Hodges Collection, 77-1  
 East Place, 3CL21



Item No./Hodges Catalog	1-38, 1387 (Huddleston 229?)
Vessel Form	bowl, carinated
AAS/HSU Digital Photo No.	K5280
Type	Glassell Engraved ?
Decoration	engraved/punctated
Rim :: Body	Enos 10? 11? 12? :: plain
Paste	SOFT, SMOOTH, COMPACT
Temper	SHELL (LEACHED) & GROG
Color, Core	7.5YR5/1
Color, Exterior	7.5YR2.5/1, 7.5YR6/1, 7.5YR5/1
Color, Interior	7.5YR5/1
Overall Height cm	6.6
Weight g	266
Volume liters	1
Use/Wear/Condition	SOME WEAR ON BASE; SECTION OF RIM/NECK MISSING
Shape / Description	CONICAL-CARINATED BOWL
Lip Treatment	ROUNDED, EVERTED
Orifice Diameter cm	17.4
Rim Height cm	3
Rim Thickness cm	0.6
Rim Surface Treatment	BURNISHED
Rim Decorative Treatment	PUNCTATES AND ENGRAVED CONC LINES
Rim/Neck Shape	STRAIGHT, INSLANTED
Body Maximum Diameter cm	17.6
Body Height cm	3.6
Body Thickness cm	0.4
Body Surface Treatment	BURNISHED
Body Decorative Treatment	
Body Shape	CONVEX
Base Shape	CIRCULAR, FLAT
Base Diameter cm	6
Base Height cm	
Base Surface Treatment	BURNISHED
Base Decorative Treatment	
Appendages	
Notes	Huddleston Grave 4, 5/27/1939 (with 1-35, 1-39, 1-42), late Mid-Ouachita to Social Hill phase

JEC Hodges Collection, 77-1  
 East Place, 3CL21



Item No./Hodges Catalog	1-39, 1384 (Huddleston 227?)
Vessel Form	bowl, simple
AAS/HSU Digital Photo No.	K5329
Type	
Decoration	notched lip
Rim :: Body	Cornell 7 :: plain
Paste	HARD, SMOOTH, COMPACT
Temper	GROG & SHELL (LEACHED)
Color, Core	5YR2.5/1
Color, Exterior	5YR5/4, 5YR3/1
Color, Interior	5YR3/1
Overall Height cm	11
Weight g	334
Volume liters	
Use/Wear/Condition	NONE SEEN; ABOUT 2/3 OF VESSEL MISSING
Shape / Description	BOWL, SIMPLE
Lip Treatment	ROUNDED, PUNCTATED/NOTCHED ON TOP OF LIP
Orifice Diameter cm	20
Rim Height cm	11
Rim Thickness cm	0.52
Rim Surface Treatment	BURNISHED
Rim Decorative Treatment	
Rim/Neck Shape	STRAIGHT, OUTSLANTED
Body Maximum Diameter cm	20
Body Height cm	
Body Thickness cm	0.7
Body Surface Treatment	BURNISHED
Body Decorative Treatment	
Body Shape	CONICAL
Base Shape	UNDISTINGUISHED, FLAT
Base Diameter cm	6
Base Height cm	
Base Surface Treatment	BURNISHED
Base Decorative Treatment	
Appendages	
Notes	Huddleston Grave 4, 5/27/1939 (with 1-35, 1-38, 1-42), late Mid-Ouachita to Social Hill phase



JEC Hodges Collection, 77-1  
 East Place, 3CL21



Item No./Hodges Catalog	1-40
Vessel Form	jar, short rim
AAS/HSU Digital Photo No.	N2494
Type	sim to Smithport Plain
Decoration	
Rim :: Body	plain :: plain
Paste	HARD, SMOOTH, COMPACT
Temper	GROG & GRIT (MICA, ABUNDANT)
Color, Core	5YR3/1
Color, Exterior	2.5YR5/6, 5YR5/4, 2.5YR2.5/1
Color, Interior	2.5YR2.5/1
Overall Height cm	13
Weight g	678
Volume liters	1.5
Use/Wear/Condition	ABRASION ON BASE, BLACKENED INT BUT NO APPARENT SOOTING; FIRE CLOUDS ON EXT
Shape / Description	JAR, SHORT RIM
Lip Treatment	FLAT, SLIGHTLY EVERTED
Orifice Diameter cm	12.1
Rim Height cm	2.5
Rim Thickness cm	0.5
Rim Surface Treatment	BURNISHED RED COLORING LOOKS LIKE FIRING, NOT SLIP, BUT POSS RED OCHRE RUBBED
Rim Decorative Treatment	
Rim/Neck Shape	CONCAVE, INSLANTED
Body Maximum Diameter cm	18.2
Body Height cm	10.5
Body Thickness cm	0.6
Body Surface Treatment	BURNISHED
Body Decorative Treatment	RED COLOR LOOKS LIKE FIRING OR OCHRE RUBBED
Body Shape	SUBGLOBULAR
Base Shape	UNDISTINGUISHED, CONVEX
Base Diameter cm	
Base Height cm	
Base Surface Treatment	BURNISHED
Base Decorative Treatment	PLAIN, TRACE RED COLOR
Appendages	
Notes	ASSOCIATED VESSEL – human bone found inside jar, no info on context

JEC Hodges Collection, 77-1  
 East Place, 3CL21



Item No./Hodges Catalog	1-41, 1380 (Huddleston 201)
Vessel Form	jar, tall rim
AAS/HSU Digital Photo No.	N2856
Type	Cowhide/Foster Trailed-Incised
Decoration	incised/punctated
Rim :: Body	Chatham 9 :: Baker 16? 21?
Paste	SOFT, SMOOTH, CRUMBLY
Temper	SHELL (LEACHED)
Color, Core	5YR6/4
Color, Exterior	7.5YR6/4, 7.5YR4/1, 5YR5/6
Color, Interior	5YR6/6, 5YR4/2, 5YR4/1
Overall Height cm	14.5
Weight g	399
Volume liters	NONE; SOOTING INT RIM, EXT BODY; MISSING PC OF RIM, FILLED WITH PLASTER
Use/Wear/Condition	
Shape / Description	JAR, TALL RIM
Lip Treatment	ROUNDED
Orifice Diameter cm	19
Rim Height cm	8
Rim Thickness cm	0.4
Rim Surface Treatment	SMOOTHED
Rim Decorative Treatment	INCISED, PUNCTATED (LADDER PUNCT)
Rim/Neck Shape	STRAIGHT, OUTSLANTED
Body Maximum Diameter cm	14.5
Body Height cm	8
Body Thickness cm	0.4
Body Surface Treatment	SMOOTHED
Body Decorative Treatment	INCISED, NODES; CONCENTRIC CIRCLES WITH CENTRAL NODES, TRAILED LINES
Body Shape	SUBGLOBULAR
Base Shape	CIRCULAR, FLAT/SLIGHTLY CONCAVE
Base Diameter cm	5
Base Height cm	
Base Surface Treatment	SMOOTHED
Base Decorative Treatment	
Appendages	NODES AS PART OF BODY DESIGN
Notes	Huddleston Grave 3?, 5/1939 (201=1380?), late Social Hill to Deceiper phase

JEC Hodges Collection, 77-1  
 East Place, 3CL21



Item No./Hodges Catalog	1-42, 1412 (Huddleston 224?)
Vessel Form	jar, tall rim
AAS/HSU Digital Photo No.	N3280
Type	
Decoration	brushed/punctated
Rim :: Body	Dana 14 :: Danbury 2?
Paste	HARD, SMOOTH, COMPACT
Temper	SHELL (LEACHED)
Color, Core	7.5YR4/1
Color, Exterior	2.5YR5/6, 5YR3/1, 5YR6/6
Color, Interior	5YR3/1, 5YR7/6, 7.5YR5/3
Overall Height cm	22
Weight g	682
Volume liters	
Use/Wear/Condition	NONE NOTED; SOOTING RIM INT/EXT, FIRE CLOUDING; SHERD LOT RECONSTR., MISSING PC OF RIM & ABOUT 1/3 OF BODY
Shape / Description	JAR, TALL RIM
Lip Treatment	FLAT, SLIGHTLY EVERTED
Orifice Diameter cm	21.4
Rim Height cm	9.8
Rim Thickness cm	
Rim Surface Treatment	SMOOTHED
Rim Decorative Treatment	BRUSHED & PUNCTATED
Rim/Neck Shape	CONCAVE, OUTSLANTED
Body Maximum Diameter cm	18.4
Body Height cm	12.2
Body Thickness cm	0.5
Body Surface Treatment	SMOOTHED
Body Decorative Treatment	BRUSHED
Body Shape	SUB-GLOBULAR
Base Shape	UNDISTINGUISHED, FLAT
Base Diameter cm	8.5
Base Height cm	
Base Surface Treatment	SMOOTHED
Base Decorative Treatment	
Appendages	
Notes	Huddleston Grave 4, 5/27/1939 (with 1-35, 1-38, 1-39), late Mid-Ouachita to Social Hill phase

JEC Hodges Collection, 77-1  
 East Place, 3CL21



Item No./Hodges Catalog	1-43, 2747
Vessel Form	beaker
AAS/HSU Digital Photo No.	N3034
Type	East Incised
Decoration	incised
Rim :: Body	Bates 17? :: plain
Paste	HARD, SMOOTH, COMPACT
Temper	GROG
Color, Core	7.5YR2.5/1, 2.5YR5/8
Color, Exterior	2.5YR5/6, 7.5YR7/4, 10YR3/1
Color, Interior	2.5YR5/6
Overall Height cm	13
Weight g	403
Volume liters	
Use/Wear/Condition	FIRE CLOUDING; MISSING MORE THAN 1/2 RIM AND SHERDS FROM RIM & BODY
Shape / Description	BEAKER
Lip Treatment	ROUNDED
Orifice Diameter cm	11.5
Rim Height cm	3
Rim Thickness cm	0.5
Rim Surface Treatment	BURNISHED INCISED & RED SLIP; 5 INCISED LINES BELOW LIP, 5-8MM APART, SUSPENSION HOLE
Rim Decorative Treatment	PARTLY SMOOTHED OVER, SOMEWHAT MEANDERING
Rim/Neck Shape	CONVEX, INSLANTED
Body Maximum Diameter cm	11.5
Body Height cm	10
Body Thickness cm	0.5
Body Surface Treatment	BURNISHED
Body Decorative Treatment	RED SLIP
Body Shape	HIGH WAISTED
Base Shape	CIRCULAR, FLAT?
Base Diameter cm	7.1
Base Height cm	
Base Surface Treatment	BURNISHED
Base Decorative Treatment	RED SLIP
Appendages	
Notes	Huddleston Grave F, 1/1/1943 (with 1-8, 1-24, 1-29, 1-44?), East phase

JEC Hodges Collection, 77-1  
 East Place, 3CL21



Item No./Hodges Catalog	1-44, 2746
Vessel Form	bowl
AAS/HSU Digital Photo No.	N4840
Type	East Incised
Decoration	incised
Rim :: Body	Bates 3 or Barrington 1 :: plain
Paste	HARD, SMOOTH, COMPACT
Temper	GROG, MEDIUM, ABUNDANT
Color, Core	7.5YR4/1
Color, Exterior	7.5YR4/2, 7.5YR3/2
Color, Interior	7.5YR4/2, 7.5YR2.5/1, 7.5YR5/3
Overall Height cm	9.5
Weight g	156
Volume liters	SOME ROUGHENING BASE INT/EXT, SOME SOOTING OR BLACK RESIDUE ON BASE INT/EXT, SHERD LOT WAS PARTIALLY RECONSTR., ABOUT 25% PRESENT
Use/Wear/Condition	
Shape / Description	BOWL, OUTSLANTED RIM
Lip Treatment	SMOOTHED, FLAT LIP, THINNED
Orifice Diameter cm	14 (est., 25%)
Rim Height cm	3.4
Rim Thickness cm	0.3
Rim Surface Treatment	BURNISHED
Rim Decorative Treatment	5 HORIZONTAL LINES, INCISED, SMOOTHED OVER, 6-8mm APART
Rim/Neck Shape	STRAIGHT, OUTSLANTED
Body Maximum Diameter cm	
Body Height cm	6.1
Body Thickness cm	0.3
Body Surface Treatment	BURNISHED
Body Decorative Treatment	PLAIN
Body Shape	CONVEX
Base Shape	UNDISTINGUISHED
Base Diameter cm	
Base Height cm	
Base Surface Treatment	BURNISHED/ERODED
Base Decorative Treatment	
Appendages	
Notes	Huddleston Grave F, 1/1/1943 (with 1-8, 1-24, 1-29, 1-43), East phase

JEC Hodges Collection, 77-1  
 East Place, 3CL21



Item No./Hodges Catalog	1-46, 2691
Vessel Form	jar, tall rim
AAS/HSU Digital Photo No.	N4800
Type	
Decoration	punctated/brushed
Rim :: Body	Andes? :: Danbury 1
Paste	HARD, SMOOTH, COMPACT
Temper	GROG, MEDIUM, ABUNDANT
Color, Core	7.5YR5/2
Color, Exterior	7.5YR5/2, 7.5YR2.5/1, 7.5YR5/6
Color, Interior	7.5YR2.5/1, 7.5YR6/3
Overall Height cm	21.1
Weight g	1092
Volume liters	
Use/Wear/Condition	FIRECLOUDING, SOME SOOTING ON BODY EXT & INT, RECONSTR FROM SHERD LOT, PARTIAL VESSEL
Shape / Description	JAR, TALL RIM
Lip Treatment	SMOOTHED, FLAT/BEVELED EXT. LIP, SLIGHTLY EVERTED
Orifice Diameter cm	17.8
Rim Height cm	7.1
Rim Thickness cm	0.7
Rim Surface Treatment	SMOOTHED
Rim Decorative Treatment	ROWS OF FINGERNAIL PUNCTATES W/ DIAG. INCISING IN BETWEEN
Rim/Neck Shape	STRAIGHT, OUTSLANTED
Body Maximum Diameter cm	17.3
Body Height cm	14
Body Thickness cm	0.8
Body Surface Treatment	SMOOTHED
Body Decorative Treatment	VERTICAL BRUSHING OR COMBING, NOT OVERLAPPING, REGULAR CLOSESPACED VERT LINES
Body Shape	SUBGLOBULAR
Base Shape	CIRCULAR, FLAT
Base Diameter cm	10
Base Height cm	
Base Surface Treatment	SMOOTHED
Base Decorative Treatment	
Appendages	
Notes	Huddleston Grave A', 11/14/1942 (with 1-4, 1-19, 1-30, 1-31), East phase

JEC Hodges Collection, 77-1  
East Place, 3CL21



Item No./Hodges Catalog	1-47, 2513
Vessel Form	bottle
AAS/HSU Digital Photo No.	K7166
Type	
Decoration	engraved
Rim :: Body	plain :: Elmira 60? Elmhurst 9?
Paste	SOFT, GRITTY, CRUMBLY
Temper	GROG
Color, Core	5YR6/6
Color, Exterior	5YR6/6, 5YR4/1, 5YR5/6
Color, Interior	5YR6/6, 5YR5/6
Overall Height cm	
Weight g	
Volume liters	
Use/Wear/Condition	SHERD LOT, NOT RECONSTRUCTED
Shape / Description	BOTTLE, SHORT WIDE NECK - SHERD LOT, NOT RECONSTRUCTED
Lip Treatment	ROUNDED
Orifice Diameter cm	5.4
Rim Height cm	5.7
Rim Thickness cm	0.3
Rim Surface Treatment	ERODED
Rim Decorative Treatment	
Rim/Neck Shape	INSLOPING
Body Maximum Diameter cm	
Body Height cm	
Body Thickness cm	0.4
Body Surface Treatment	
Body Decorative Treatment	ENGRAVED, RED PIGMENT IN LINES
Body Shape	
Base Shape	
Base Diameter cm	
Base Height cm	
Base Surface Treatment	ERODED
Base Decorative Treatment	
Appendages	
Notes	Huddleston Grave X or Y, 12/6/1941 (with 1-23), Mid-Ouachita phase

JEC Hodges Collection, 77-1  
East Place, 3CL21



Item No./Hodges Catalog	1-48, 1374 (Huddleston 197)
Vessel Form	bowl, carinated
AAS/HSU Digital Photo No.	K7170
Type	Means Engraved
Decoration	engraved
Rim :: Body	Erie 1 :: Enos 9?
Paste	HARD, SMOOTH, COMPACT
Temper	SHELL (LEACHED) & GROG
Color, Core	
Color, Exterior	10YR3/1, 10YR6/2, 5YR7/6
Color, Interior	10YR8/3, 10YR3/1
Overall Height cm	5.5
Weight g	
Volume liters	
Use/Wear/Condition	SPALLING ON BODY; FIRECLOUDING; WAS SHERD LOT, MISSING ABOUT 1/2 RIM AND MORE THAN 1/2 BODY AND BASE
Shape / Description	CARINATED BOWL
Lip Treatment	ROUNDED
Orifice Diameter cm	12.6
Rim Height cm	2
Rim Thickness cm	0.3
Rim Surface Treatment	BURNISHED
Rim Decorative Treatment	ENGRAVED W/ RED PIGMENT, RECT. DESIGN OF SPURRED LINES
Rim/Neck Shape	STRAIGHT, VERTICAL
Body Maximum Diameter cm	
Body Height cm	3.5
Body Thickness cm	0.35
Body Surface Treatment	BURNISHED
Body Decorative Treatment	
Body Shape	CONVEX
Base Shape	CIRCULAR, FLAT
Base Diameter cm	
Base Height cm	
Base Surface Treatment	
Base Decorative Treatment	ENGRAVED CONCENTRIC CIRCLES
Appendages	
Notes	Huddleston Grave 1 or 2, 4/29/1939 (with 1-12, 1-36, 1-49), late Social Hill to Deceiper phase; Phillips photo 3886



JEC Hodges Collection, 77-1  
 East Place, 3CL21



Item No./Hodges Catalog	1-49, 1375 (Huddleston 198)
Vessel Form	bowl, carinated
AAS/HSU Digital Photo No.	K5219
Type	Means Engraved
Decoration	engraved
Rim :: Body	Enos 4? 5? :: plain
Paste	HARD, SMOOTH, COMPACT
Temper	GROG & SHELL (LEACHED)
Color, Core	
Color, Exterior	7.5YR4/2
Color, Interior	7.5YR4/2
Overall Height cm	6
Weight g	281
Volume liters	0.6
Use/Wear/Condition	LARGE CHIP ON LIP
Shape / Description	CARINATED BOWL
Lip Treatment	ROUNDED
Orifice Diameter cm	16.6
Rim Height cm	2.4
Rim Thickness cm	0.582
Rim Surface Treatment	BURNISHED
Rim Decorative Treatment	ENGRAVED WITH PUNCTATES
Rim/Neck Shape	STRAIGHT, VERTICAL
Body Maximum Diameter cm	6.5
Body Height cm	3.6
Body Thickness cm	0.5
Body Surface Treatment	BURNISHED
Body Decorative Treatment	
Body Shape	CONVEX
Base Shape	CIRCULAR, CONCAVE
Base Diameter cm	5
Base Height cm	
Base Surface Treatment	BURNISHED
Base Decorative Treatment	
Appendages	
Notes	Huddleston Grave 1 or 2, 4/29/1939 (with 1-12, 1-36, 1-48), late Social Hill to Deceiper phase; Phillips photo 3871

JEC Hodges Collection, 77-1  
East Place, 3CL21



Item No./Hodges Catalog	1-50, 1372 (Huddleston 208)
Vessel Form	effigy bottle, pedestalled
AAS/HSU Digital Photo No.	427
Type	Keno Trailed
Decoration	incised/trailed/modeled/effigy
Rim :: Body	plain :: Baker 27?
Paste	SOFT, COMPACT
Temper	SHELL (LEACHED)
Color, Core	LIGHT GRAY (10YR8/1)
Color, Exterior	GRAY-SOME FIRECLOUDING (10YR4/2)
Color, Interior	GRAY (10YR4/1)
Overall Height cm	14.7
Weight g	412.2
Volume liters	
Use/Wear/Condition	SOME LIP DAMAGE, PROBABLY POST-DEPOSITIONAL
Shape / Description	BOTTLE, HUMAN FACE EFFIGY, PEDESTAL
Lip Treatment	FLARED
Orifice Diameter cm	6.2
Rim Height cm	4.2
Rim Thickness cm	.5
Rim Surface Treatment	SMOOTHED
Rim Decorative Treatment	
Rim/Neck Shape	SPOOL
Body Maximum Diameter cm	13.7
Body Height cm	9.7
Body Thickness cm	
Body Surface Treatment	SMOOTHED WIDE LINE INCISING/TRAILING AND SURFACE MODELING (NODES) 2 HUMAN FACE EFFIGIES ON 2 PANELS WITH VERTICAL LINES IN BETWEEN
Body Decorative Treatment	
Body Shape	SUB-GLOBULAR-MAXIMUM WIDTH IS LOW
Base Shape	CIRCULAR, FLAT, PEDESTAL
Base Diameter cm	7.0
Base Height cm	.8
Base Surface Treatment	
Base Decorative Treatment	
Appendages	
Notes	Huddleston Grave 3, 4/29-5/5/1939 (with 1-13, 1-32, 1-34, 1-41?), late Social Hill to Deceiper phase; Huddleston sketch in notebook; Phillips photo 3857; previous illustration Suhm & Jelks 1962: Plate 44K