



Virginia Commonwealth University  
**VCU Scholars Compass**

---

Capstone Design Expo Posters

College of Engineering

---

2017

# Company Health Dashboard

Zachary Raney

*Virginia Commonwealth University*

Ahmad Shahir Abdul Satar

*Virginia Commonwealth University*

Follow this and additional works at: <https://scholarscompass.vcu.edu/capstone>

 Part of the [Computer Engineering Commons](#)

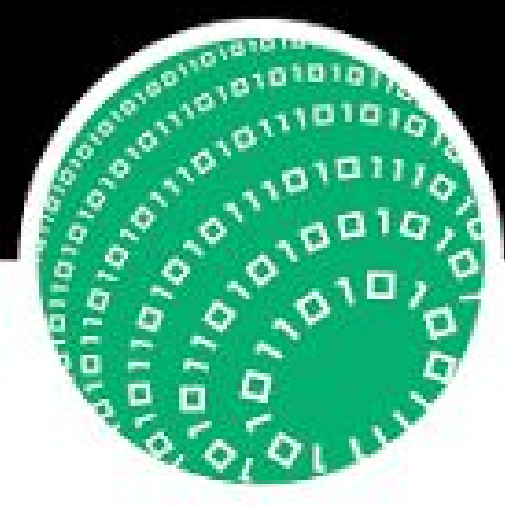
© The Author(s)

---

Downloaded from

<https://scholarscompass.vcu.edu/capstone/148>

This Poster is brought to you for free and open access by the College of Engineering at VCU Scholars Compass. It has been accepted for inclusion in Capstone Design Expo Posters by an authorized administrator of VCU Scholars Compass. For more information, please contact [libcompass@vcu.edu](mailto:libcompass@vcu.edu).



# Company Health Dashboard

CS303 | Team members: Zachary Raney, Ahmad Shahir Abdul Satar | Faculty adviser: Robert Dahlberg | Sponsor: WillowTree, Inc | Sponsor adviser Christy Phillips

## What is it?

- Web application as a dashboard
- Used to display quick information in modules
- Each module displays specific information about the company

## Why is this needed?

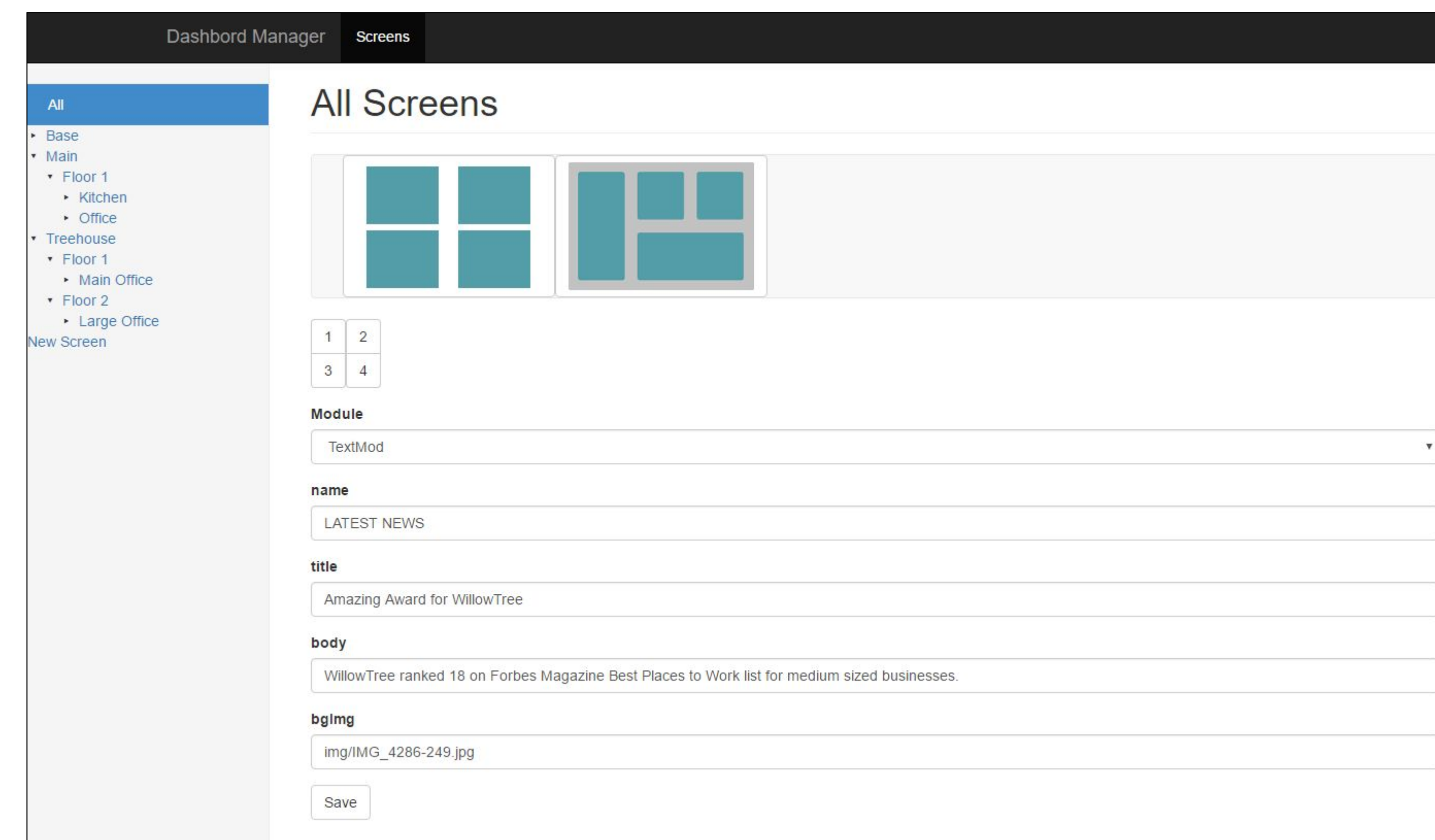
In order to display viewer-friendly information quickly on the televisions around the office

## Who uses it?

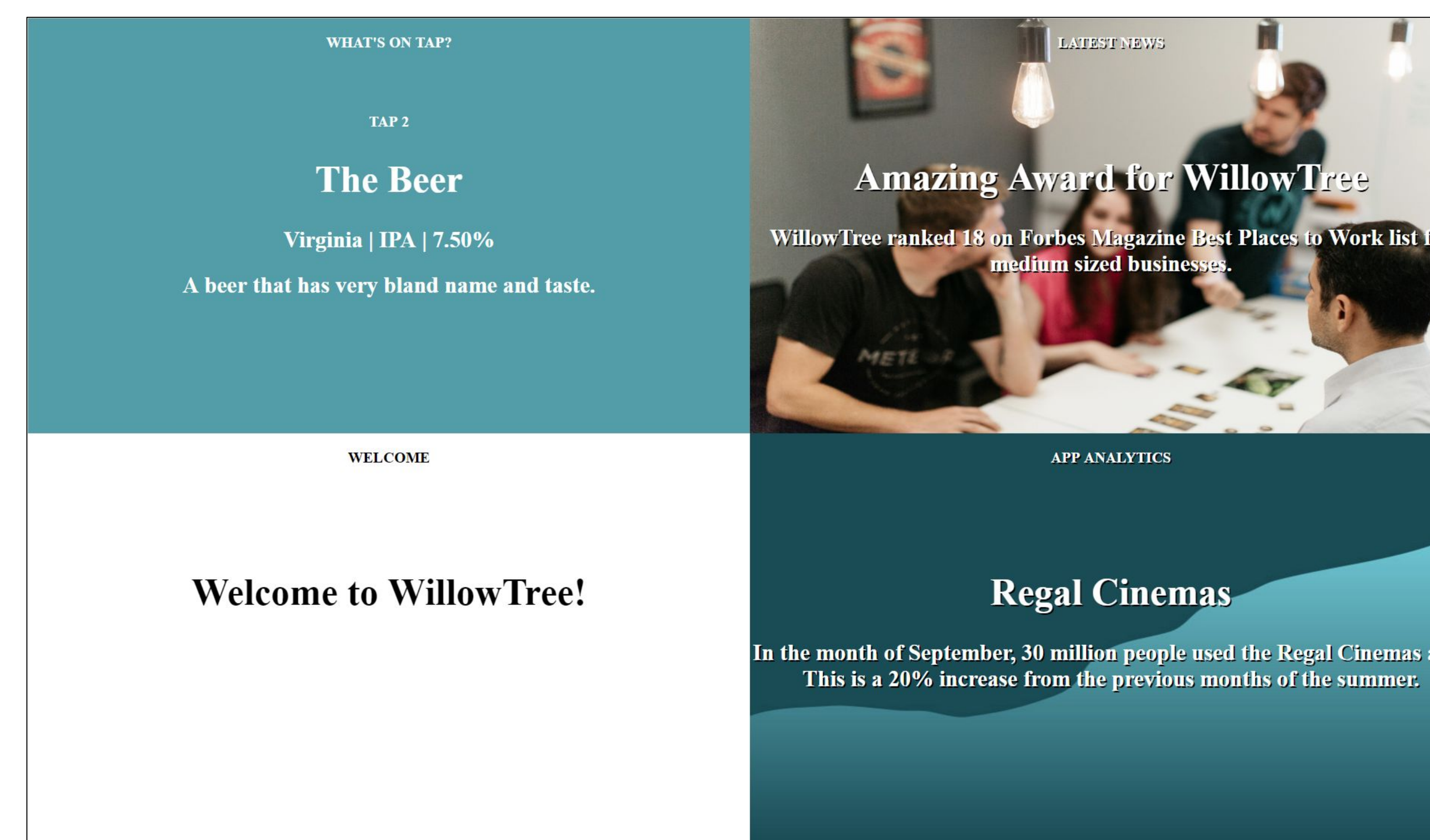
- Visitors
- Employees
- Interns
- Clients

## How does it compare?

- Similar products can not be self hosted allowing for full control
- Made custom to the company's liking
- Commercial options have heavy limitations or have high cost demands



Manager page



Full display

## Design

- Grid layout with multiple modules
- Manager used to customize each grid
- Some module options include
  - Calendar
  - Text
  - What's on tap
  - News

## Benefits

- Allows employees to understand the company overall status, and other useful information
- Easy to run and is displayed using Raspberry Pi
- Controlled from a centralized location
- A lot of room for customization and expansion



WILLOWTREE®

